

V&V Reference Report

L2 ASCDS Version : 8.4.5

Observation 10127 - L2 Version 2
Chandra X-Ray Center

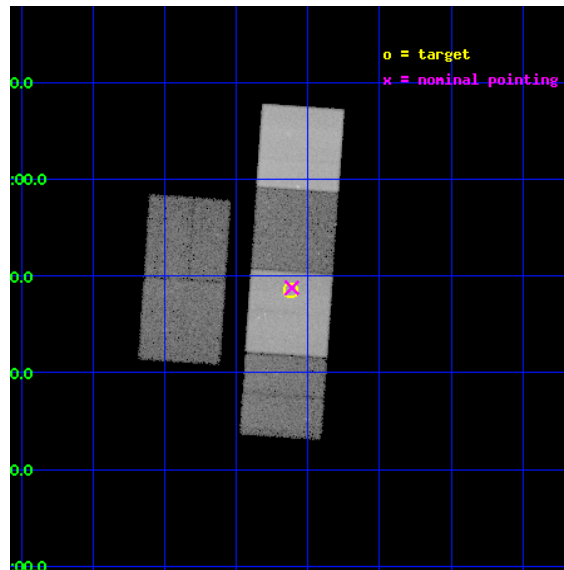
L2 Processing Date : Jun 13 2012

Contents

1	Front	2
2	OBI	3
2.1	OBI	3
2.1.1	Images	3
2.1.2	Bias	3
2.1.3	Parameters	4
2.1.4	Events	4
2.2	Compared Parameters	5
2.3	Aspect	6
2.4	Star Slots	9
2.4.1	Slot 3	9
2.4.2	Slot 4	10
2.4.3	Slot 5	11
2.4.4	Slot 6	12
2.4.5	Slot 7	13
2.5	FID Slots	14
2.5.1	Slot 0	14
2.5.2	Slot 1	15
2.5.3	Slot 2	16
A	Summary	17
A.1	Status	17
A.2	Comments	17

1 Front

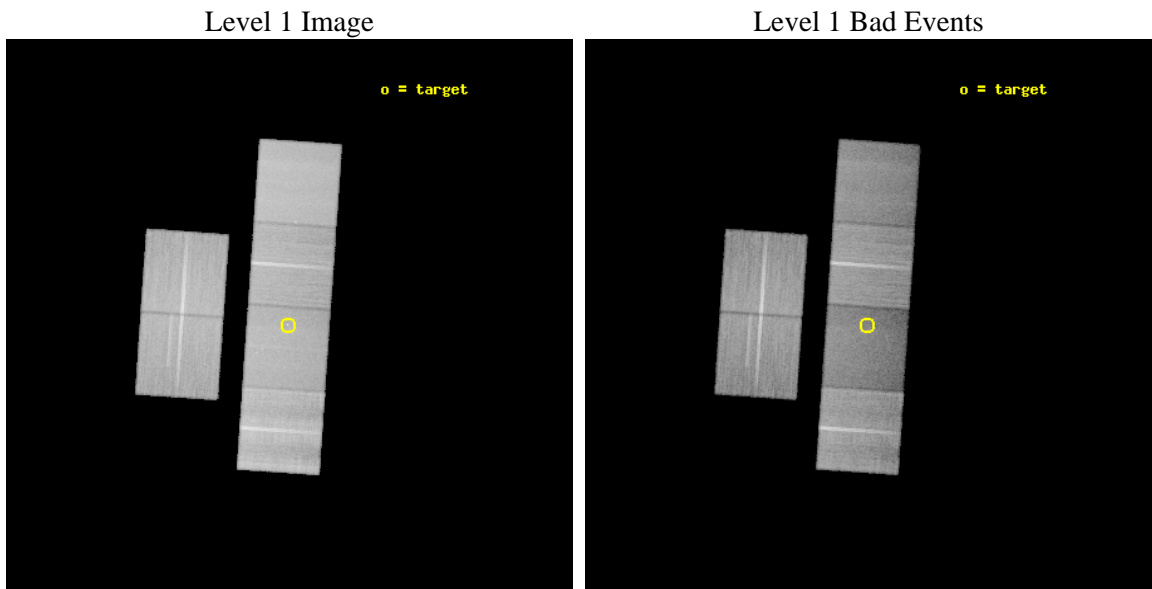
seq_num	501054	Sequence number
obs_id	10127	Observation id
title	Solving the Mystery of Type IIIn Supernovae	Proposal title
observer	Dr. Poonam Chandra	Principal investigator
object	SN 2006jd	Source name
dtcycle	0	
cycle	P	events from which exps? Prim/Second/Both
ra_targ	120.530958	Observer's specified target RA [deg]
dec_targ	0.80875	Observer's specified target Dec [deg]
ra_nom	120.52813023519	Nominal RA [deg]
dec_nom	0.81269698274799	Nominal Dec [deg]
roll_nom	93.956099543113	Nominal Roll [deg]
revision	2	Processing version of data
ontime	37244.676960349	Sum of GTIs [s]
livetime	36773.062434625	Livetime [s]
ontime2	37254.399861276	Sum of GTIs [s]
ontime3	37251.158880949	Sum of GTIs [s]
ontime5	37254.399861276	Sum of GTIs [s]
ontime6	37254.399861276	Sum of GTIs [s]
ontime7	37244.676960349	Sum of GTIs [s]
ontime8	37247.896609128	Sum of GTIs [s]
l2events	436821	Number of level 2 events



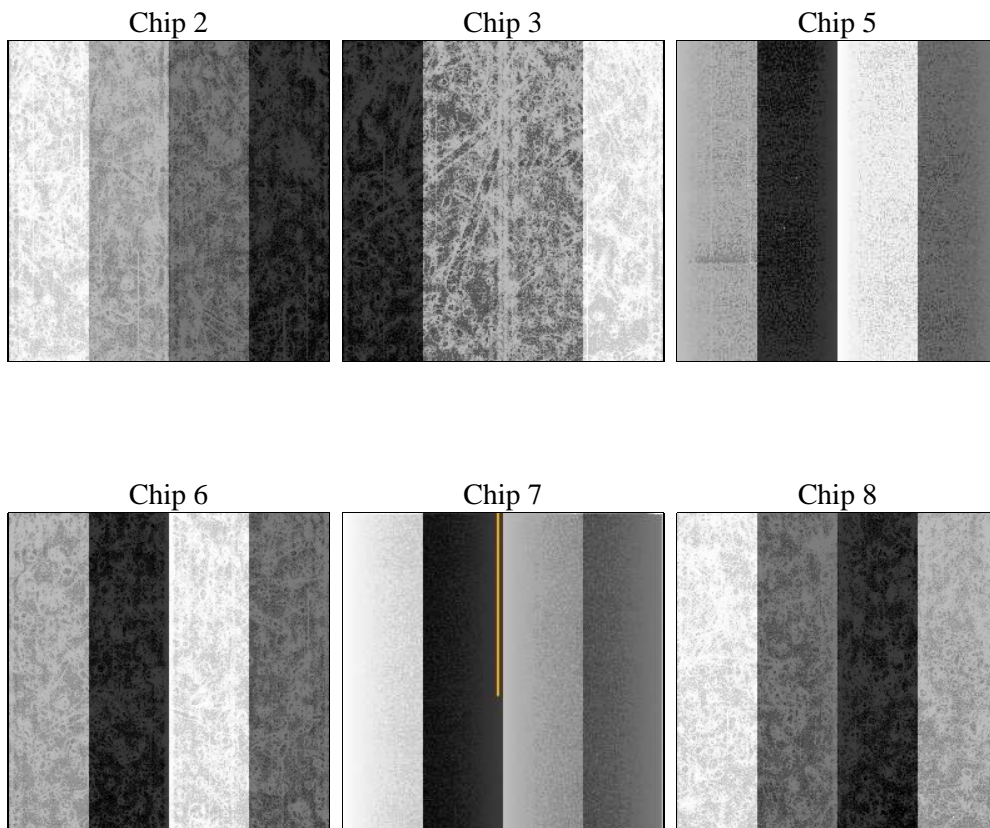
2 OBI

2.1 OBI

2.1.1 Images



2.1.2 Bias



2.1.3 Parameters

obi_num	0	Obi number	sched_exp_time	37500.000000	[s] Scheduled observation exposure time
ascdsver	8.4.5	Processing system revision	ontime	37244.676960349	Sum of GTIs [s]
caldsver	4.4.10	 	ontime2	37254.399861276	Sum of GTIs [s]
date	2012-06-13T06:05:55	Date and time of file creation	ontime3	37251.158880949	Sum of GTIs [s]
revision	2	Processing version of data	ontime5	37254.399861276	Sum of GTIs [s]
			ontime6	37254.399861276	Sum of GTIs [s]
			ontime7	37244.676960349	Sum of GTIs [s]
			ontime8	37247.896609128	Sum of GTIs [s]
			l1events	1979026	Number of level 1 events

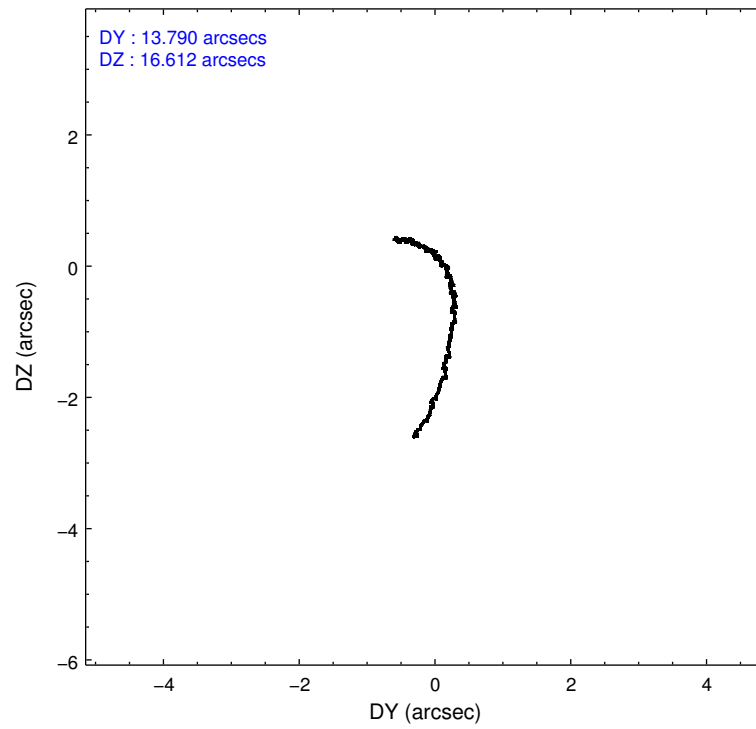
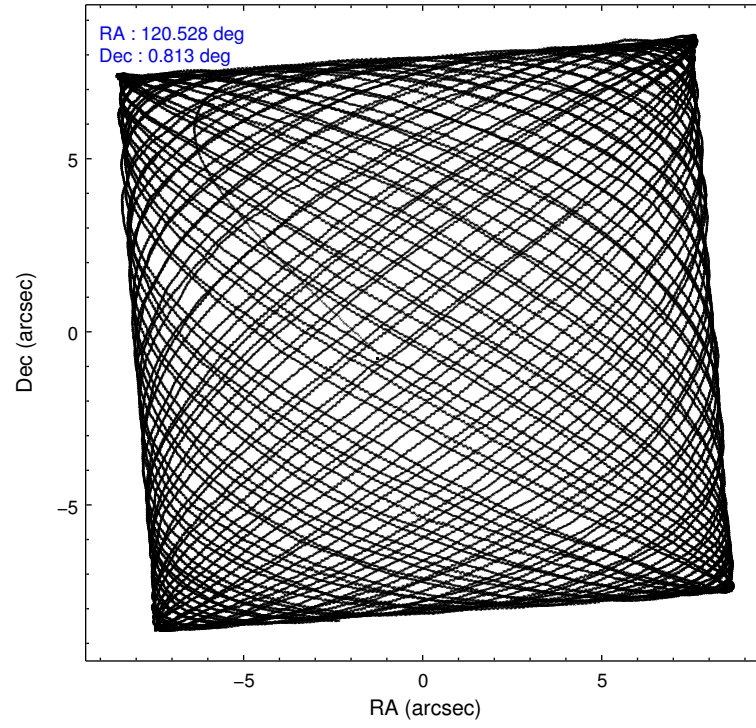
2.1.4 Events

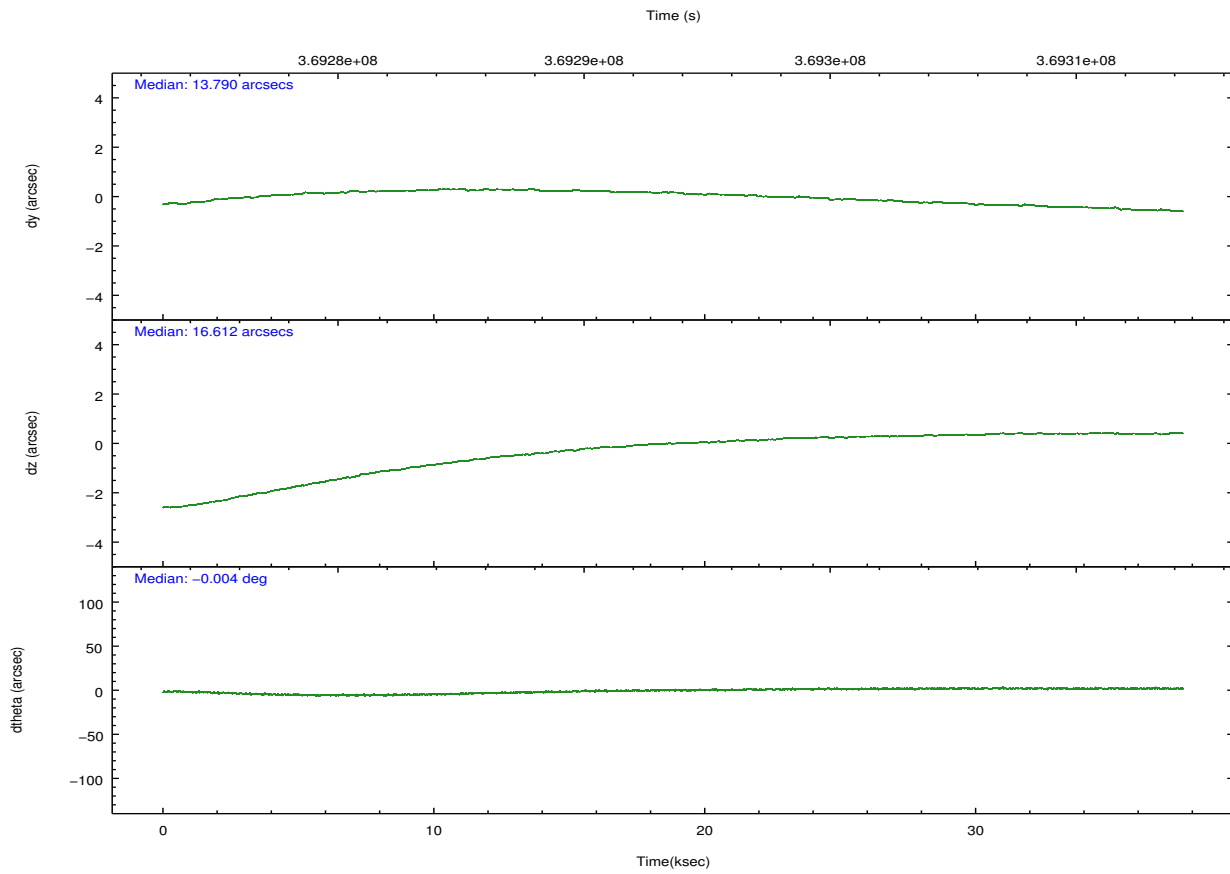
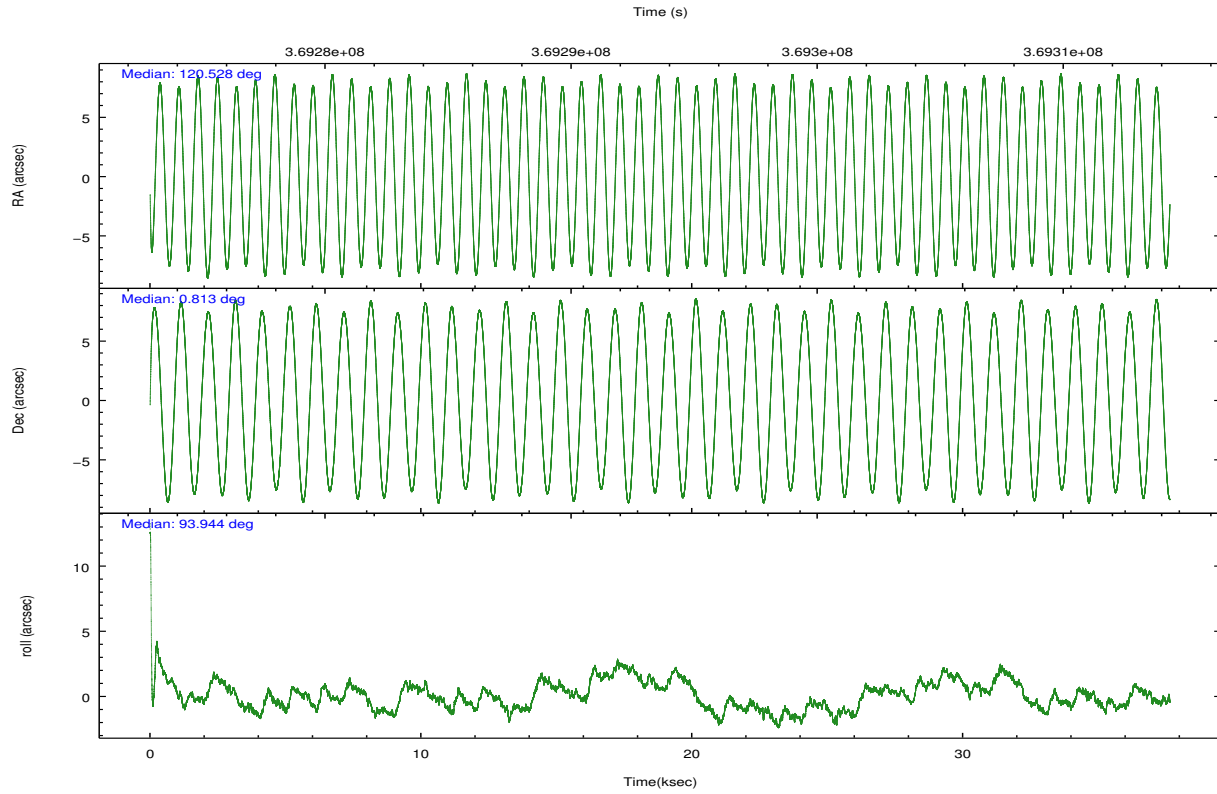
	ccd 2	ccd 3	ccd 5	ccd 6	ccd 7	ccd 8		ccd 2	ccd 3	ccd 5	ccd 6	ccd 7	ccd 8
level 1 events	329860	291026	380781	301287	294774	381298	grade 0 events	10755	10313	14367	11636	14885	26830
rejected events	300393	263107	183436	269630	149813	283181		3%	3%	3%	3%	5%	7%
rejected %	91%	90%	48%	89%	50%	74%	grade 1 events	177	167	806	154	464	298
								0%	0%	0%	0%	0%	0%
							grade 2 events	7417	6202	62036	7218	31059	23464
								2%	2%	16%	2%	10%	6%
							grade 3 events	3081	3053	8810	3216	13466	10735
								0%	1%	2%	1%	4%	2%
							grade 4 events	3022	3062	8523	3256	13246	9762
								0%	1%	2%	1%	4%	2%
							grade 5 events	8505	10426	31214	10266	31686	16238
								2%	3%	8%	3%	10%	4%
							grade 6 events	5195	5290	103625	6334	72321	27327
								1%	1%	27%	2%	24%	7%
							grade 7 events	291708	252513	151400	259207	117647	266644
								88%	86%	39%	86%	39%	69%

2.2 Compared Parameters

Parameter	Planned	Actual	Parameter	Planned	Actual
Instrument	ACIS	ACIS	Obspar format version number	7	7
Detector	ACIS-235678	ACIS-235678	Obspar file type	PREDICTED	ACTUAL
Grating	NONE	NONE	Obspar update status	NONE	UPDATED
Data mode	VFAINT	VFAINT	CCD I0 on	N	N
Observation mode	POINTING	POINTING	CCD I1 on	N	N
[deg] Pointing RA	120.543714	120.5281302351869	CCD I2 on	O1	Y
[deg] Pointing Dec	0.790222	0.8126969827479896	CCD I3 on	O2	Y
[deg] Pointing Roll	93.799246	93.95609954311337	CCD S0 on	N	N
[mm] SIM focus pos	-0.684267	-0.6828225247311905	CCD S1 on	Y	Y
[mm] SIM defocus	0	0.001444936568705701	CCD S2 on	Y	Y
[mm] SIM translation stage pos	-190.132523	-190.1400660498719	CCD S3 on	Y	Y
[mm] SIM translation stage offset	0	0.00754346686406393	CCD S4 on	Y	Y
[s] Observation start time (MET)	369274937.184000	369273866.69969	CCD S5 on	N	N
Observation start date	2009-09-14T00:21:11	2009-09-14T00:04:26	Number of optional ACIS chips dropped	0	0
[s] Observation end time (MET)	369312437.184000	369313545.47668	On-chip summing requested	N	N
Observation end date	2009-09-14T10:46:11	2009-09-14T11:05:45	Subarray requested	NONE	NONE
Read mode	TIMED	TIMED	Alternating exposures requested	N	N
			[s] Primary exposure time	0.000000	3.2

2.3 Aspect



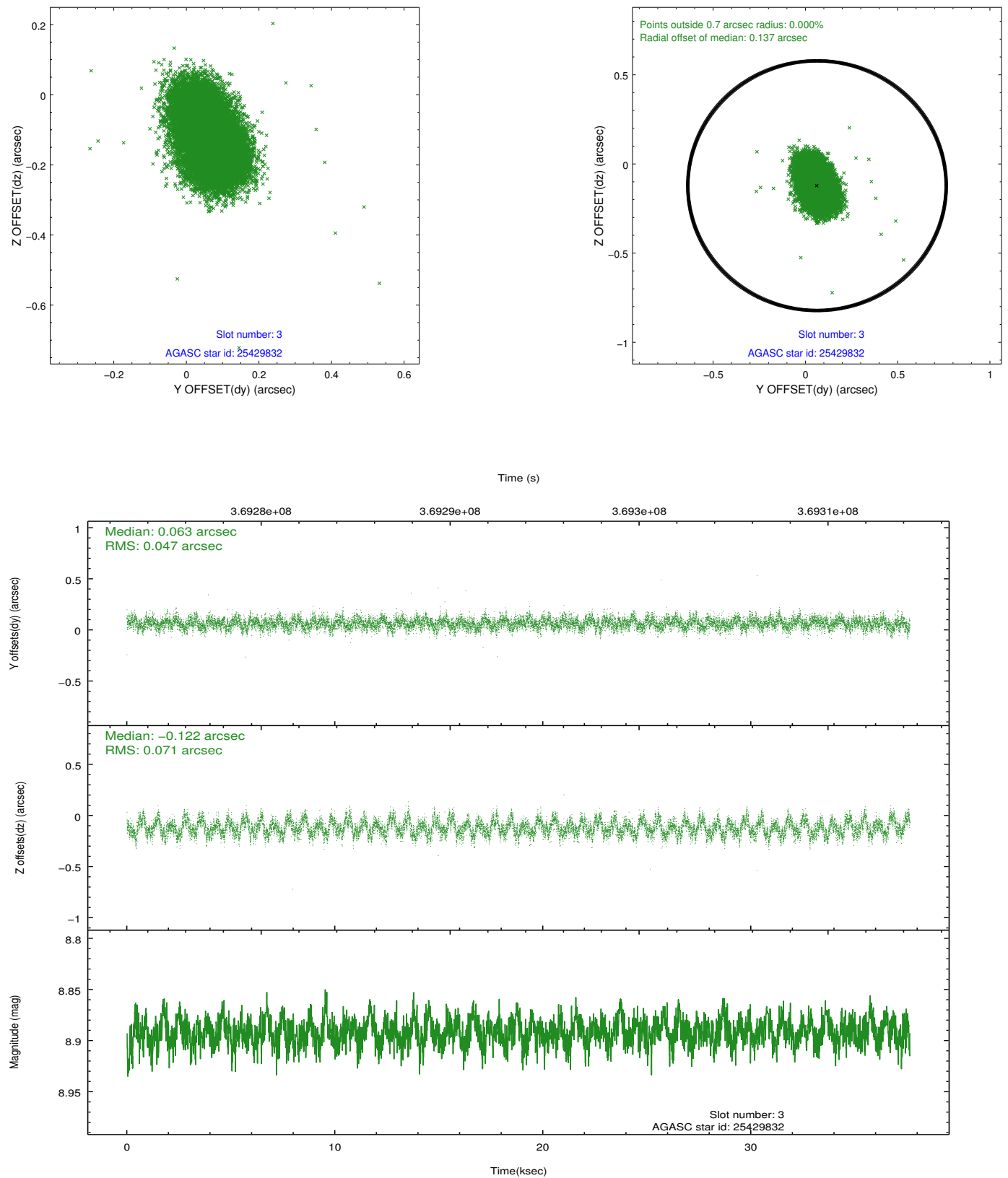


Slot Statistics

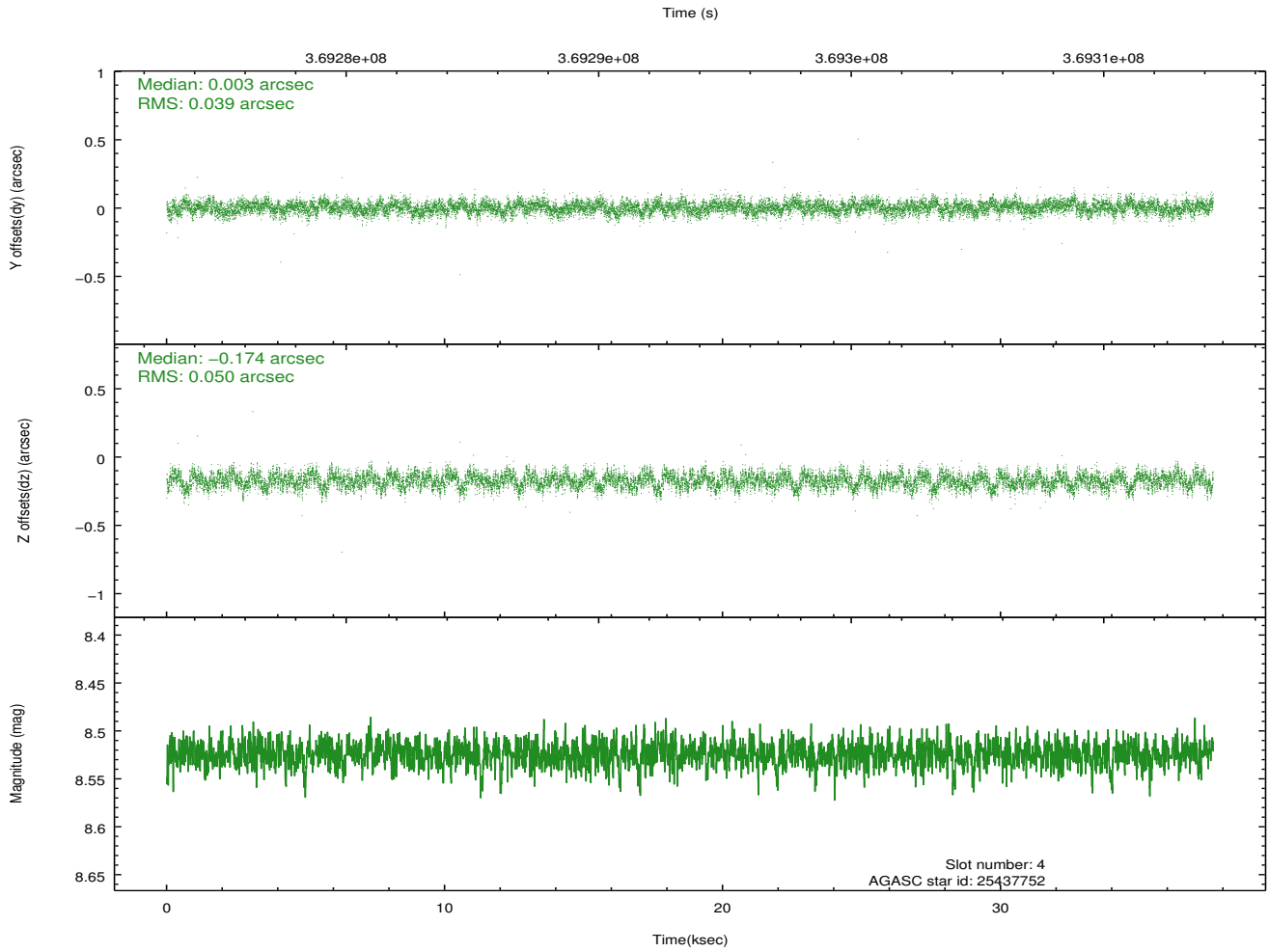
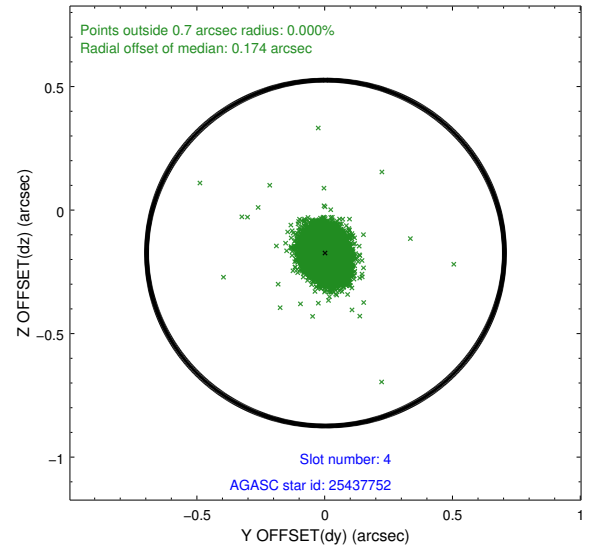
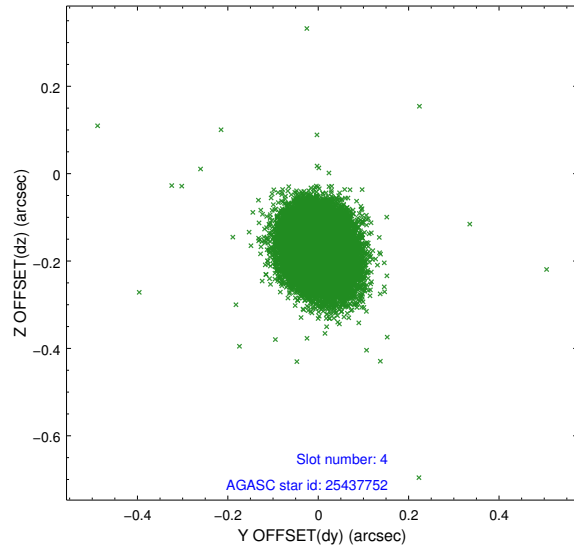
slot	status	id	mag	n_pts	med_dy	med_dz	dr1	dr2	ra	dec	mean_y	mean_z
0	FID	ACIS-S-4	6.97	9182	0.151	0.003	0.008	0.013	0.000000	0.000000	2146.82	171.04
1	FID	ACIS-S-5	7.01	9182	-0.195	-0.001	0.013	0.023	0.000000	0.000000	-1819.68	164.53
2	FID	ACIS-S-6	7.11	9181	0.014	0.012	0.015	0.022	0.000000	0.000000	394.91	808.28
3	GUIDE	25429832	8.89	18355	0.063	-0.122	0.090	0.148	120.163506	0.566259	-713.76	1418.99
4	GUIDE	25437752	8.52	18352	0.003	-0.174	0.066	0.107	120.217768	0.614926	-551.95	1212.52
5	GUIDE	25440416	8.62	18355	-0.005	-0.001	0.078	0.124	120.728561	1.186380	1379.34	-757.84
6	GUIDE	25445664	7.13	18365	-0.170	0.086	0.062	0.096	121.111275	0.961051	478.94	-2078.99
7	GUIDE	25446288	9.17	18330	0.107	0.209	0.102	0.166	120.698079	1.011181	757.40	-606.70

2.4 Star Slots

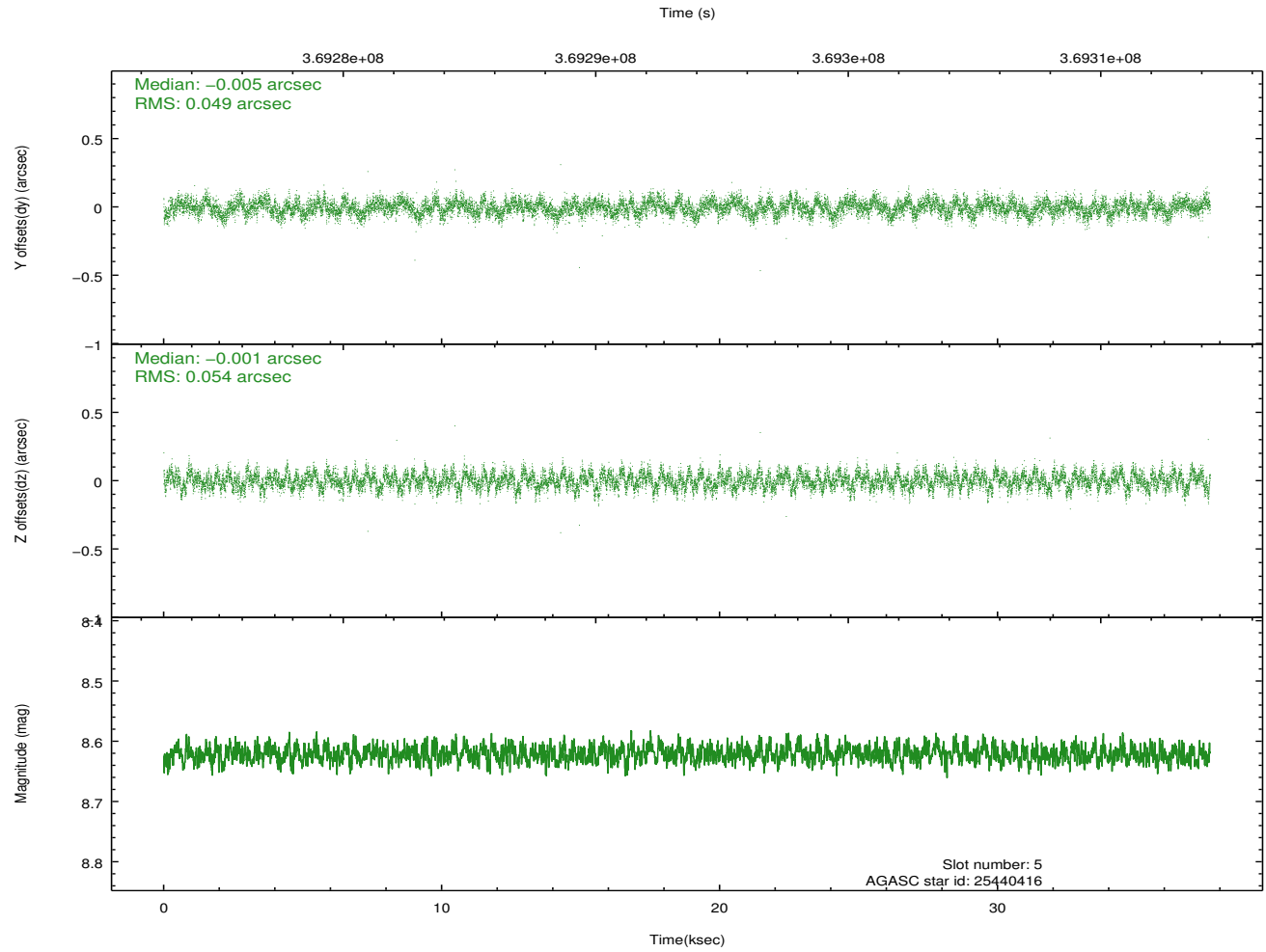
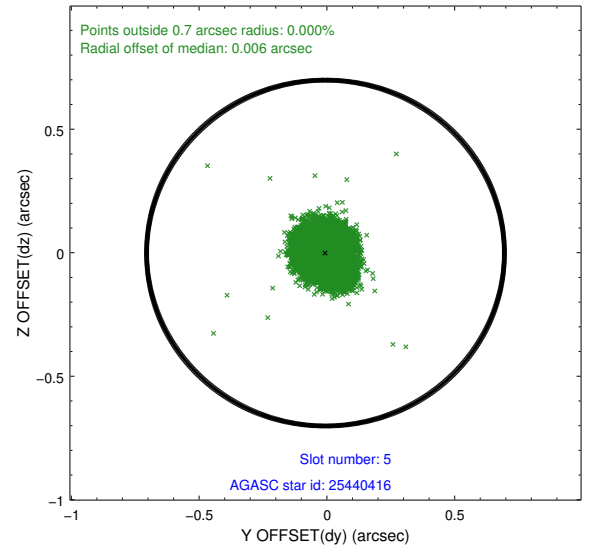
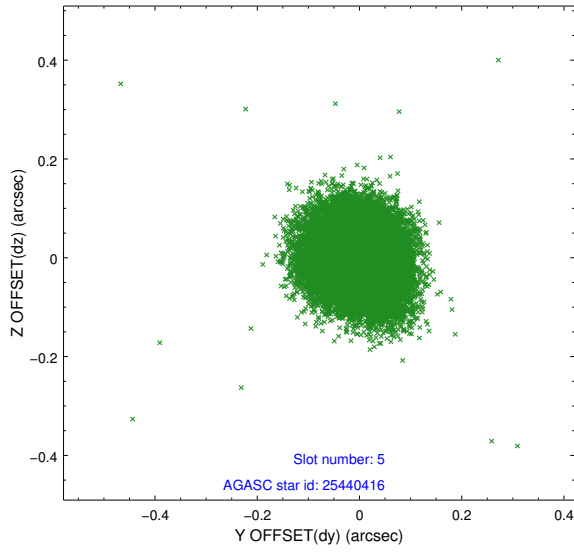
2.4.1 Slot 3



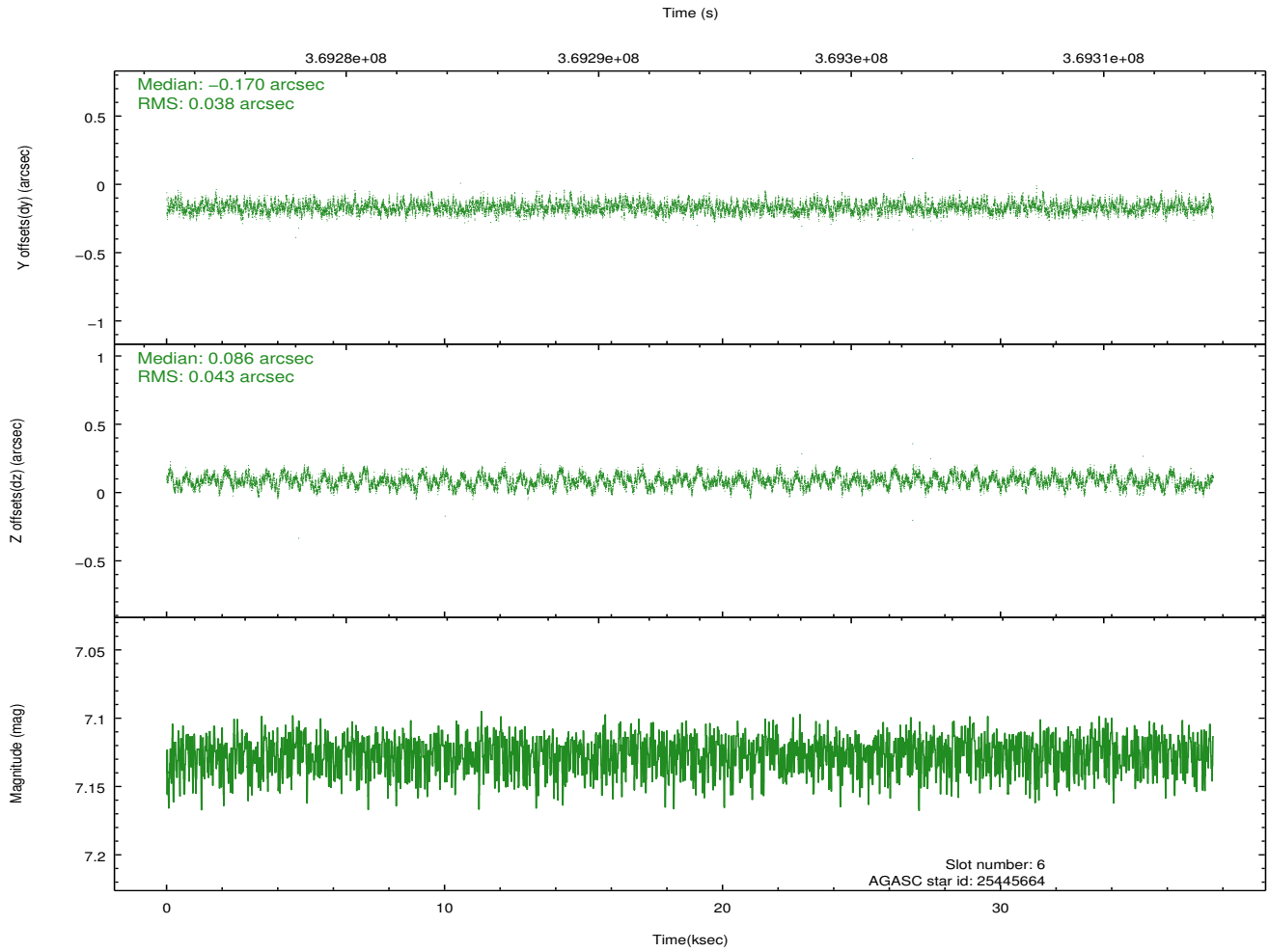
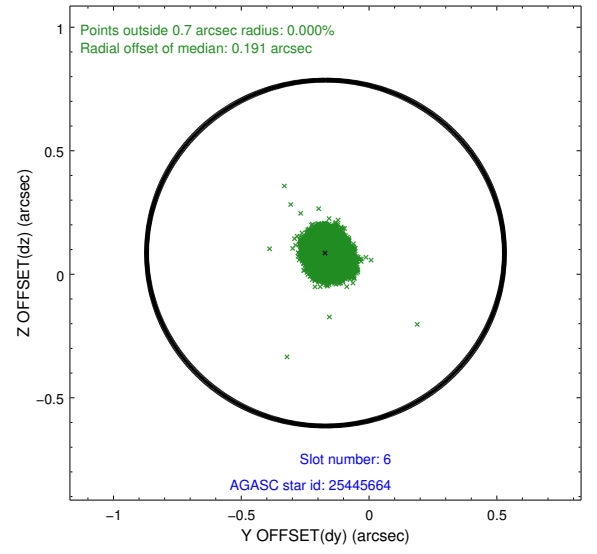
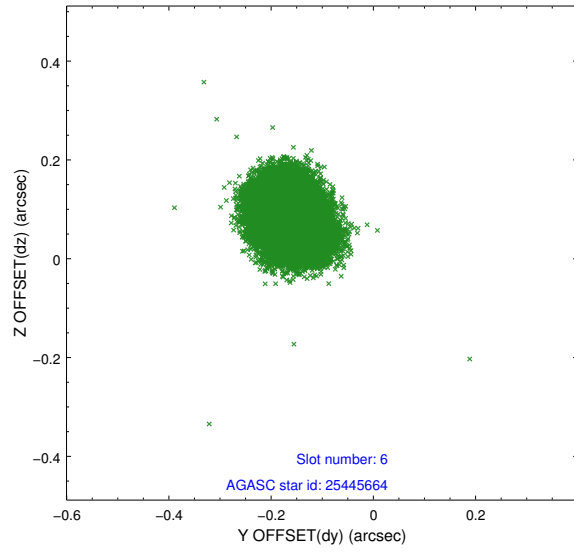
2.4.2 Slot 4



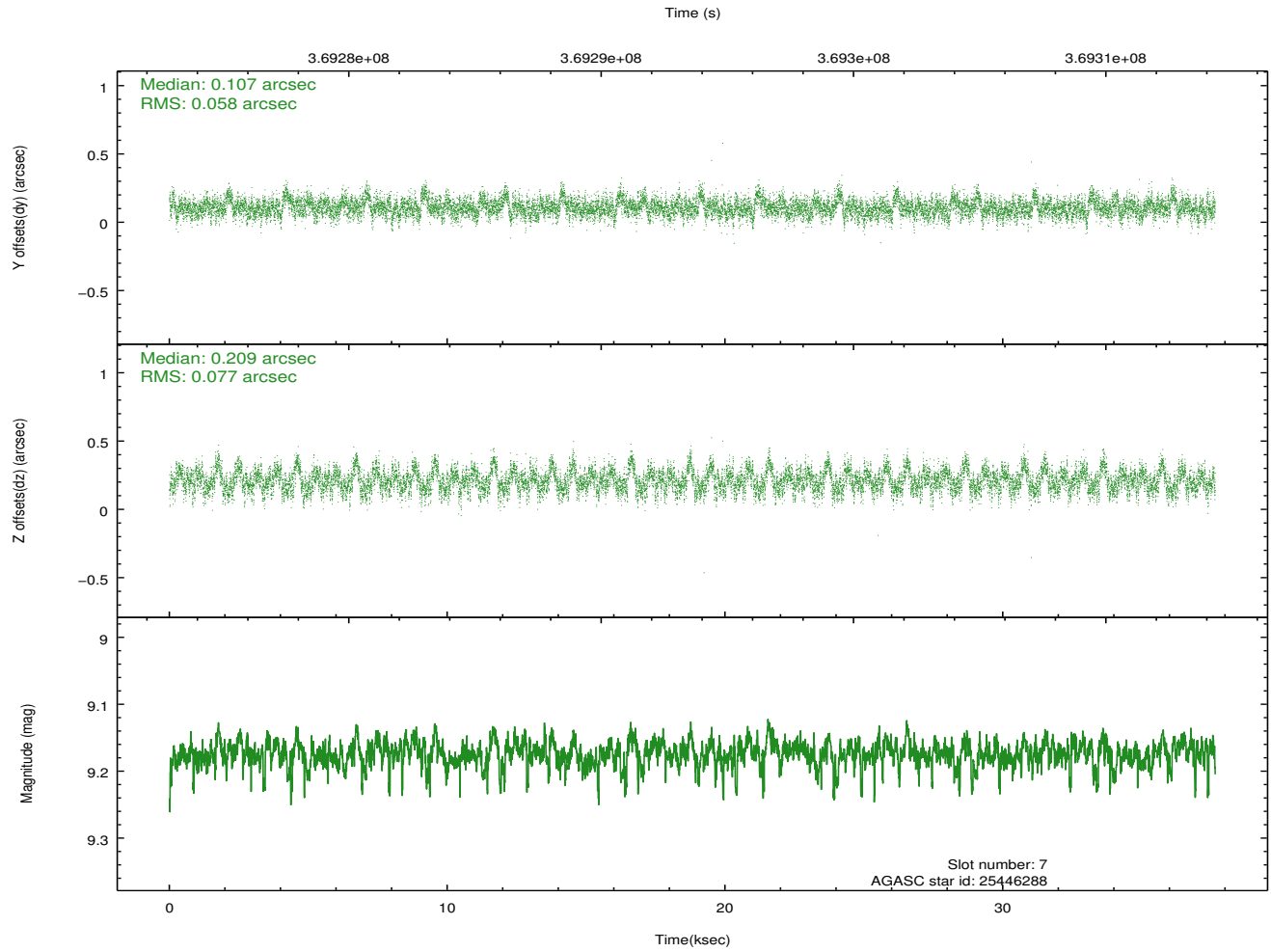
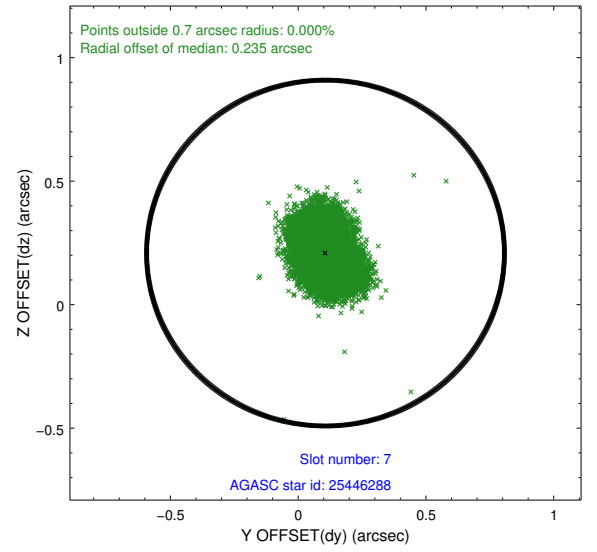
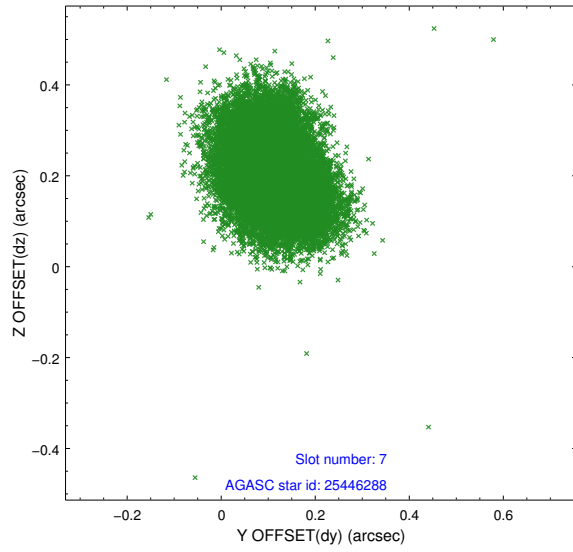
2.4.3 Slot 5



2.4.4 Slot 6

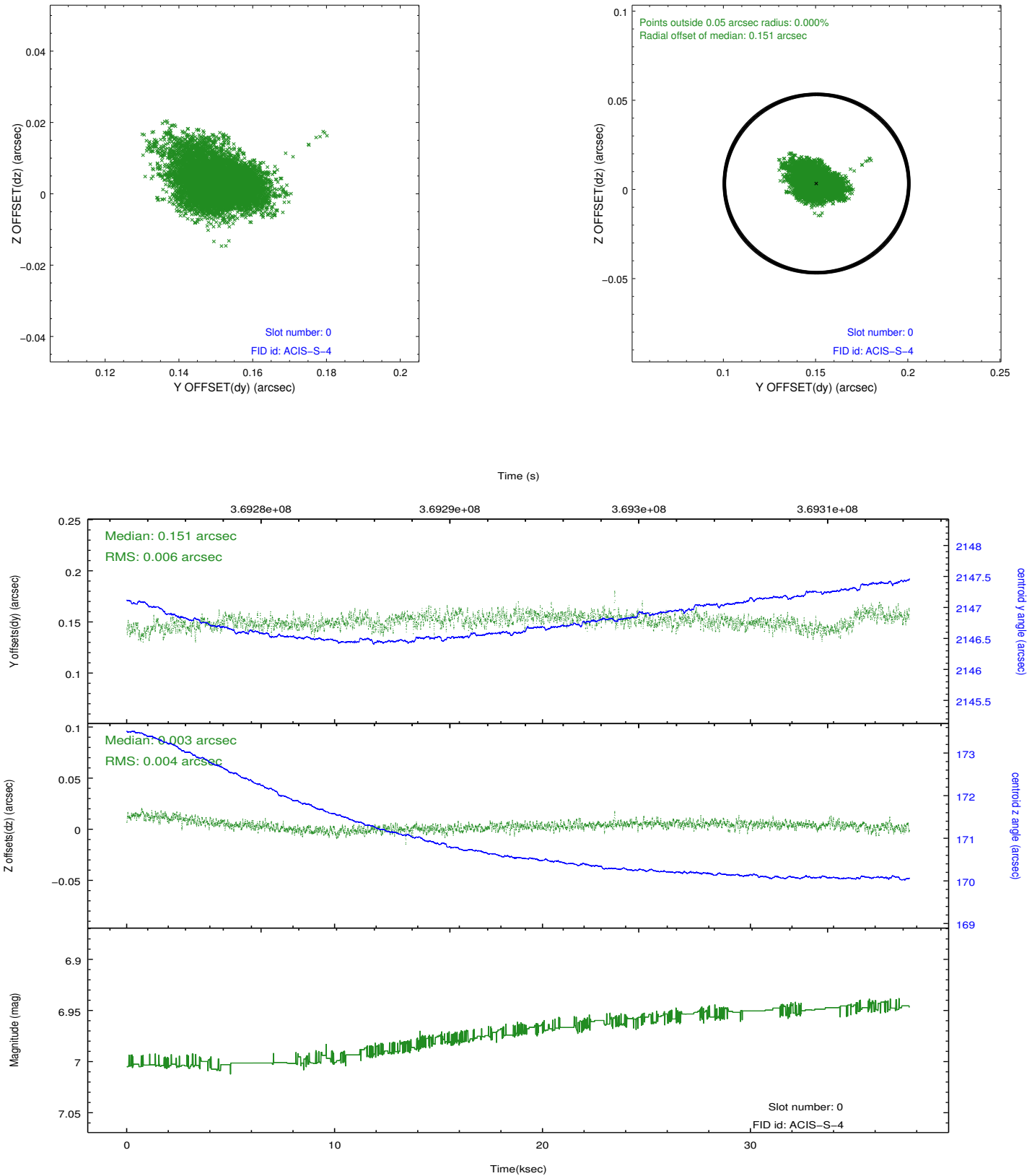


2.4.5 Slot 7

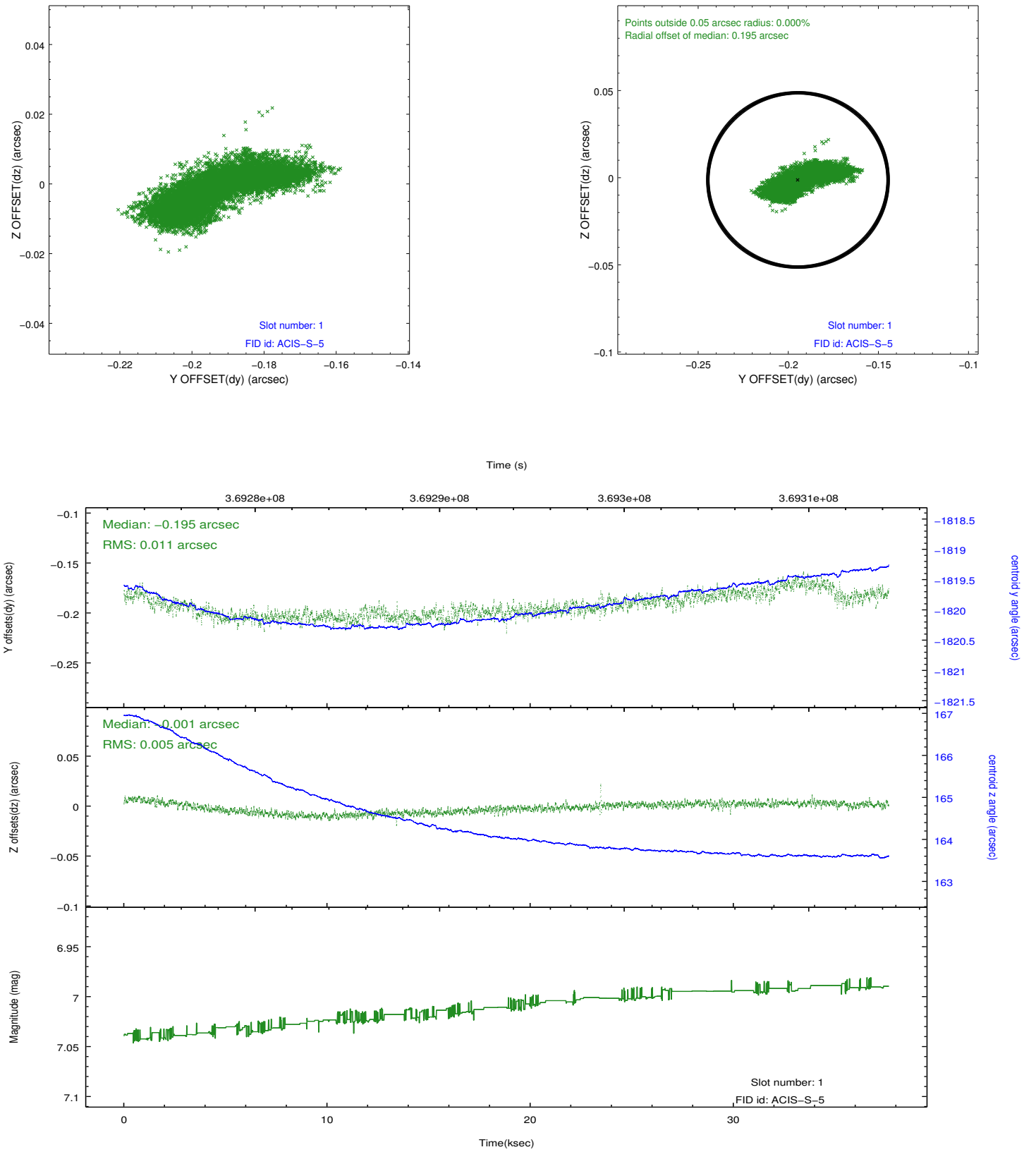


2.5 FID Slots

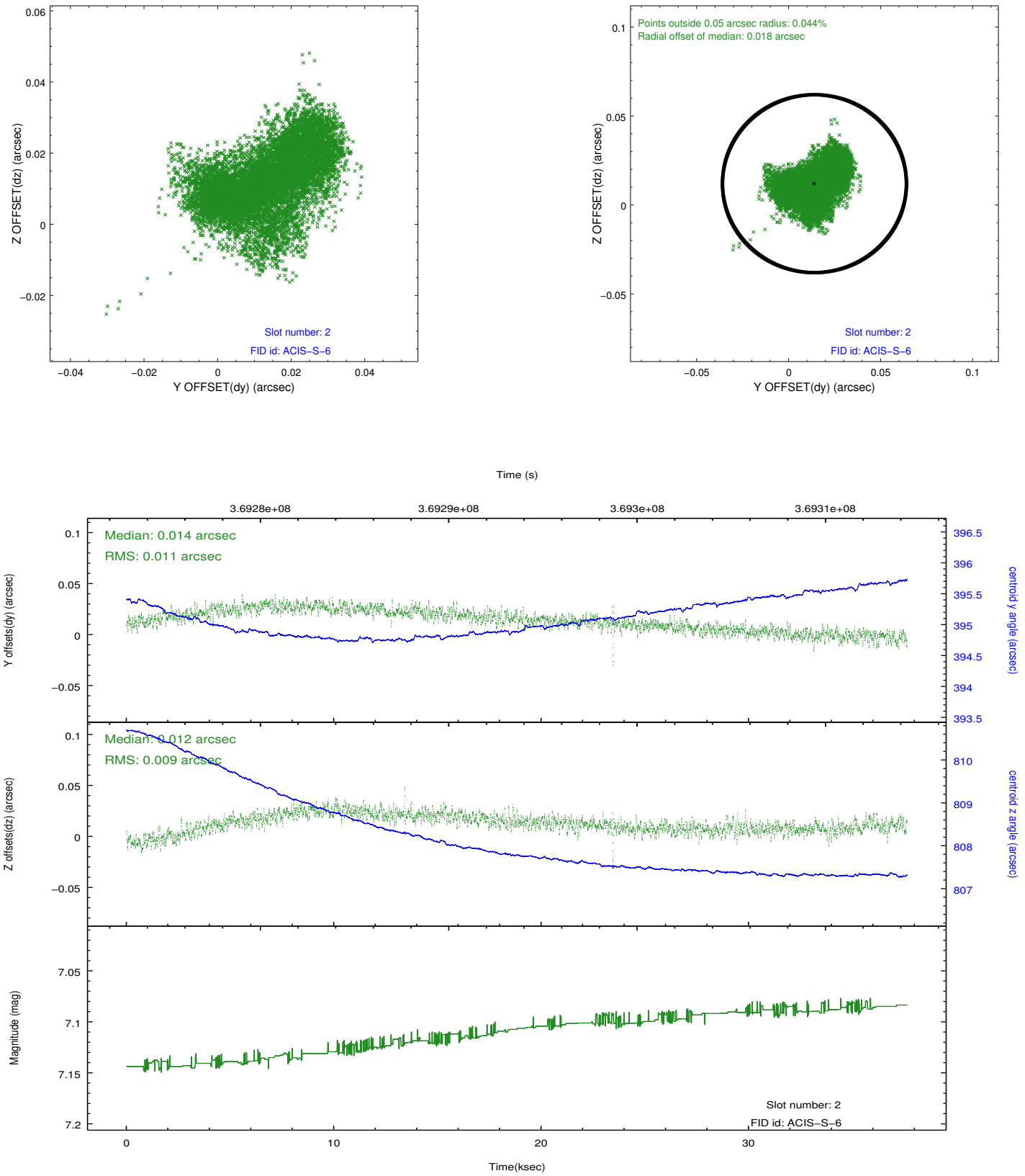
2.5.1 Slot 0



2.5.2 Slot 1



2.5.3 Slot 2



A Summary

A.1 Status

V&V Scientist	Jen Lauer
V&V Date (YYYY-MM-DD)	2012.06.17
V&V Edition	1
V&V Disposition and Status	OK
V&V Charge Time	37.244676960349

A.2 Comments