

V&V Reference Report

L2 ASCDS Version : 8.4.5

Observation 10907 - L2 Version 3
Chandra X-Ray Center

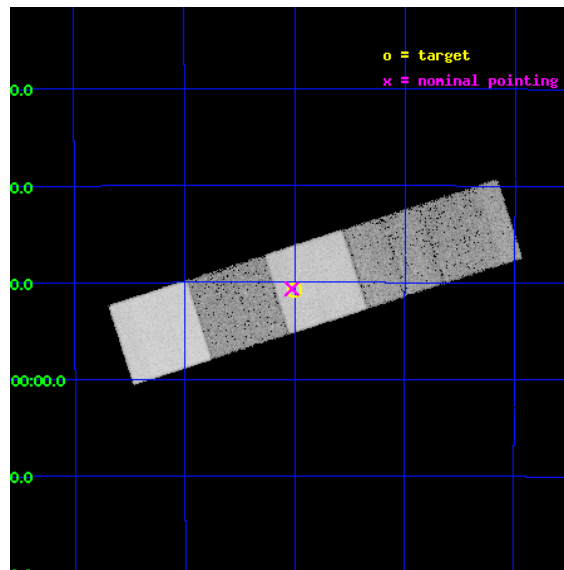
L2 Processing Date : Jun 8 2012

Contents

1	Front	2
2	OBI	3
2.1	OBI	3
2.1.1	Images	3
2.1.2	Bias	3
2.1.3	Parameters	4
2.1.4	Events	4
2.2	Compared Parameters	5
2.3	Aspect	6
2.4	Star Slots	9
2.4.1	Slot 3	9
2.4.2	Slot 5	10
2.4.3	Slot 6	11
2.4.4	Slot 7	12
2.5	FID Slots	13
2.5.1	Slot 0	13
2.5.2	Slot 1	14
2.5.3	Slot 2	15
A	Summary	16
A.1	Status	16
A.2	Comments	16

1 Front

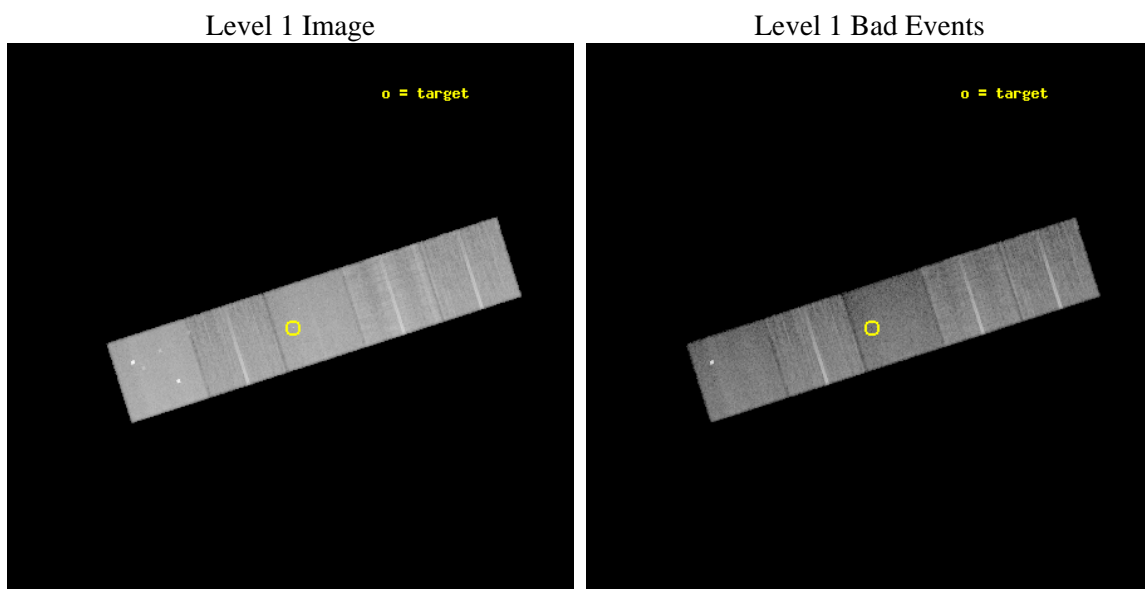
seq_num	401065	Sequence number
obs_id	10907	Observation id
title	Simultaneous Chandra/ATCA observation of GRO J1655-40 in quiescence	
observer	Elena Gallo	Principal investigator
object	GRO J1655-40	Source name
dtcycle	0	
cycle	P	events from which exps? Prim/Second/Both
ra_targ	253.500417	Observer's specified target RA [deg]
dec_targ	-39.845806	Observer's specified target Dec [deg]
ra_nom	253.50649734838	Nominal RA [deg]
dec_nom	-39.844634917041	Nominal Dec [deg]
roll_nom	342.16053739217	Nominal Roll [deg]
revision	3	Processing version of data
ontime	18448.100141883	Sum of GTIs [s]
livetime	18207.062132235	Livetime [s]
ontime5	18448.100141883	Sum of GTIs [s]
ontime6	18444.959141612	Sum of GTIs [s]
ontime7	18448.100141883	Sum of GTIs [s]
ontime8	18444.95916152	Sum of GTIs [s]
ontime9	18441.818151236	Sum of GTIs [s]
l2events	236843	Number of level 2 events



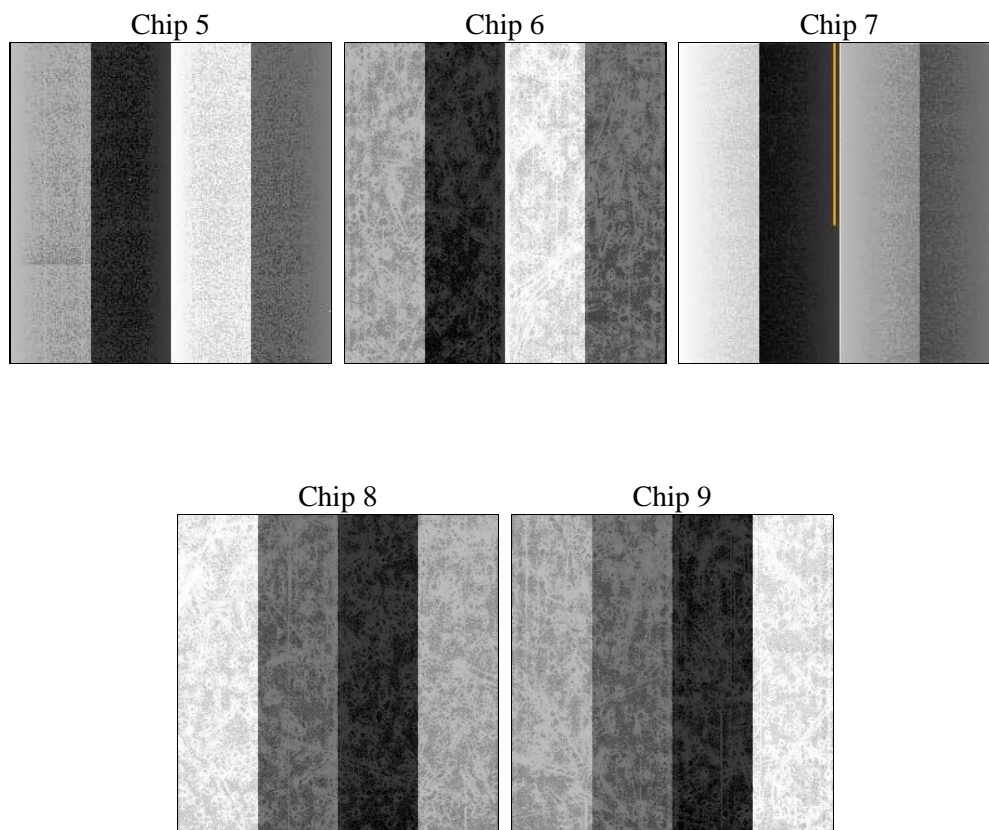
2 OBI

2.1 OBI

2.1.1 Images



2.1.2 Bias



2.1.3 Parameters

obi_num	0	Obi number	sched_exp_time	18300.000000	[s] Scheduled observation exposure time
ascdsver	8.4.5	Processing system revision	ontime	18448.100141883	Sum of GTIs [s]
caldsver	4.4.10	 	ontime5	18448.100141883	Sum of GTIs [s]
date	2012-06-08T22:00:21	Date and time of file creation	ontime6	18444.959141612	Sum of GTIs [s]
revision	3	Processing version of data	ontime7	18448.100141883	Sum of GTIs [s]
			ontime8	18444.95916152	Sum of GTIs [s]
			ontime9	18441.818151236	Sum of GTIs [s]
			l1events	966063	Number of level 1 events

2.1.4 Events

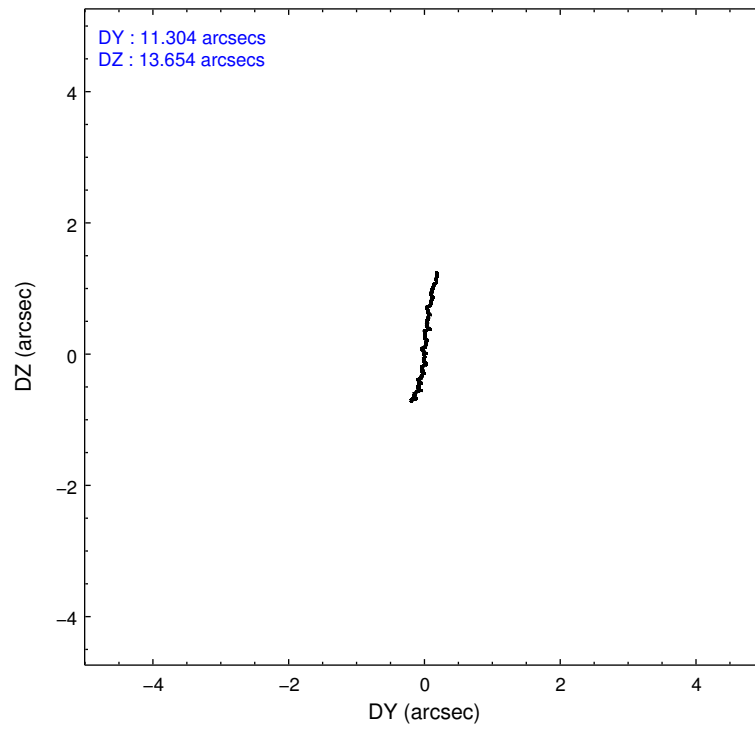
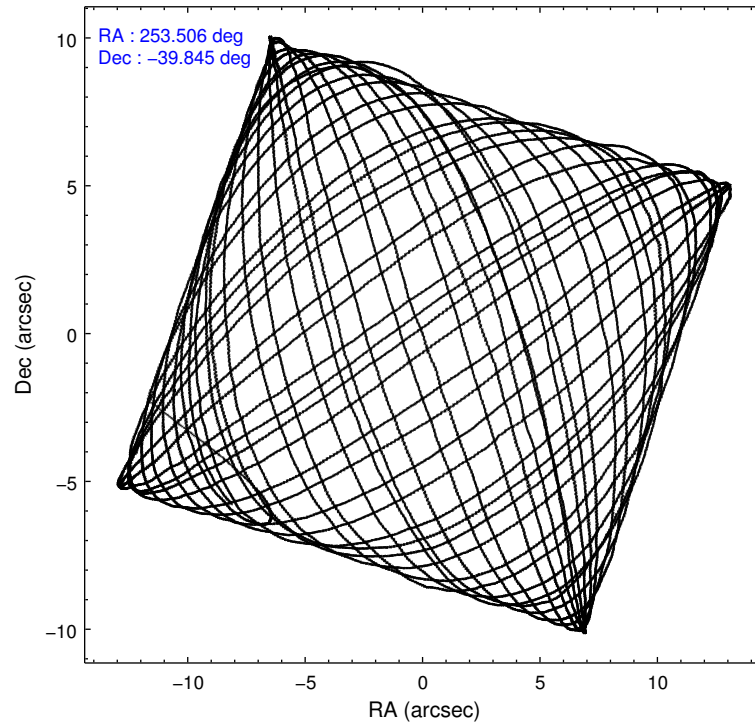
	ccd 5	ccd 6	ccd 7	ccd 8	ccd 9
level 1 events	239096	165514	187196	210802	163455
rejected events	122010	147915	102994	157752	145345
rejected %	51%	89%	55%	74%	88%

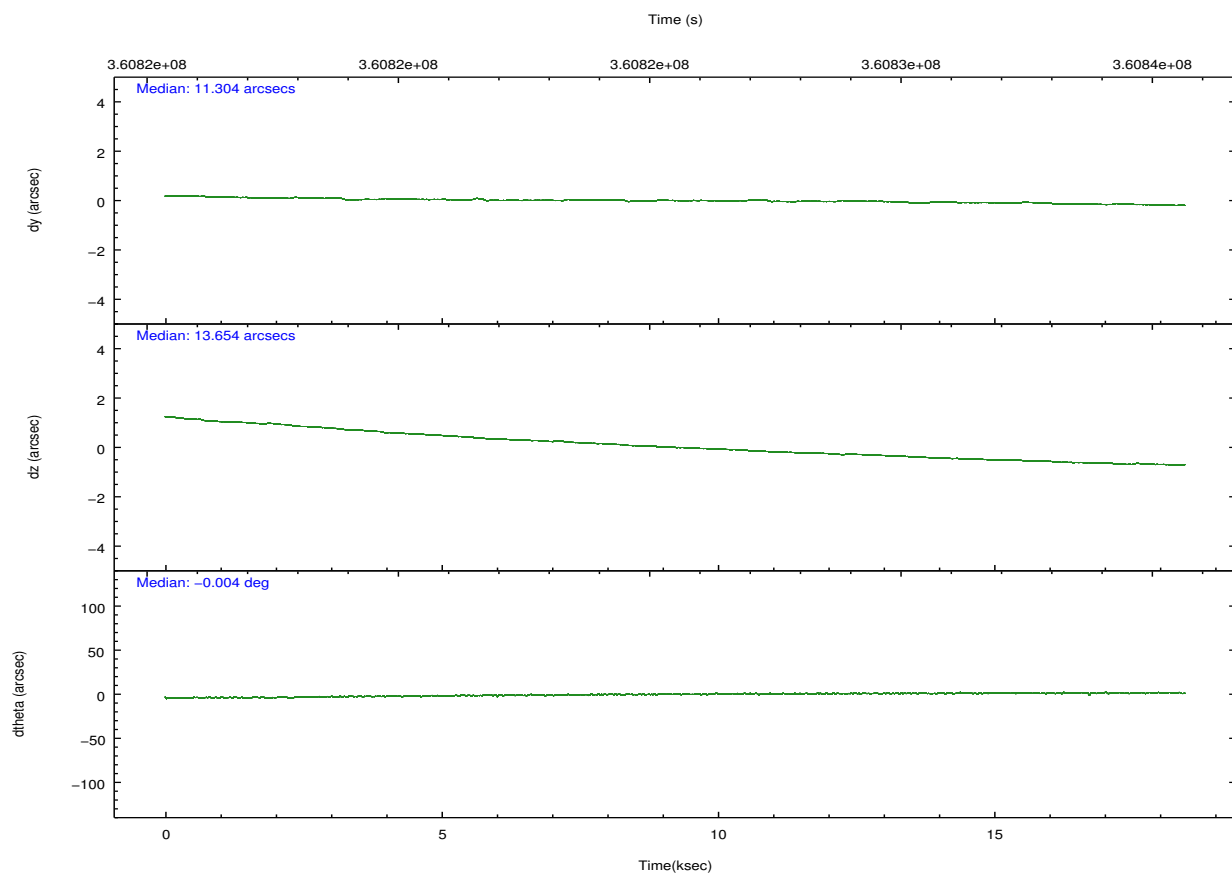
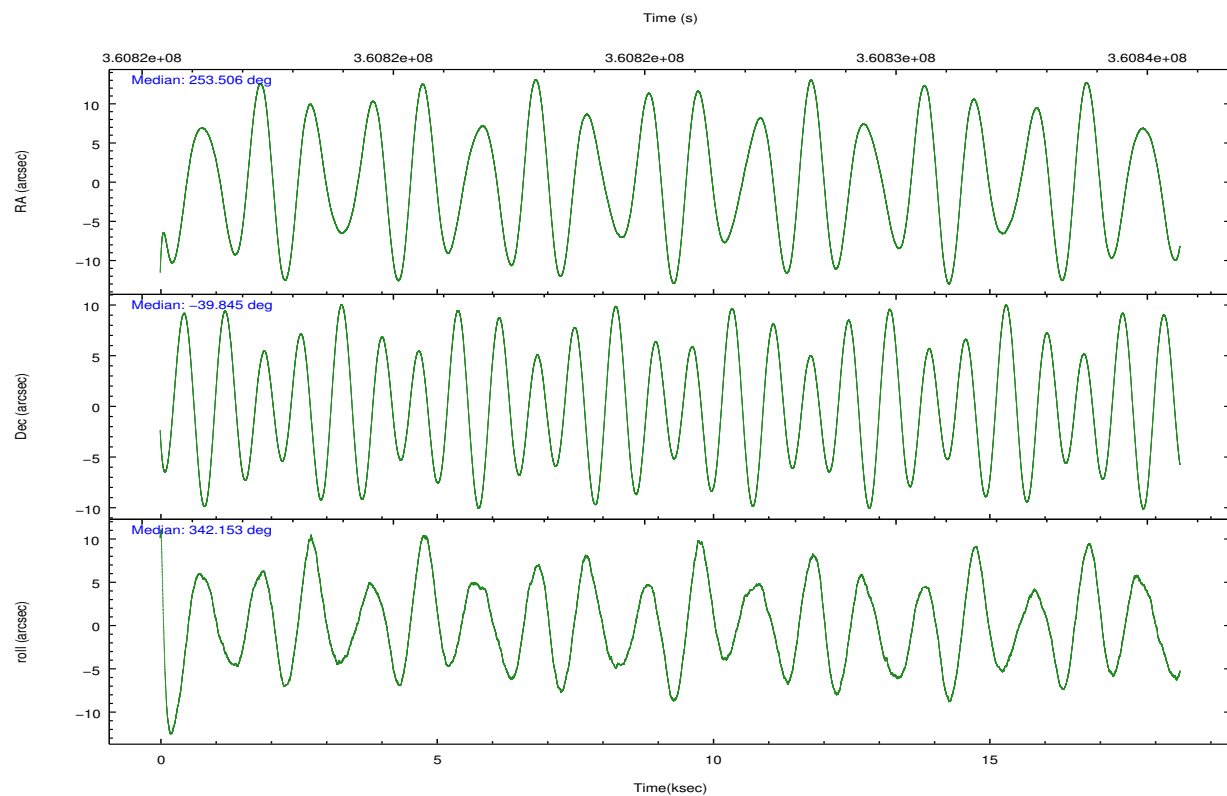
	ccd 5	ccd 6	ccd 7	ccd 8	ccd 9
grade 0 events	13930	6719	8205	16193	6954
	5%	4%	4%	7%	4%
grade 1 events	560	95	249	183	100
	0%	0%	0%	0%	0%
grade 2 events	36484	3861	17676	12586	3994
	15%	2%	9%	5%	2%
grade 3 events	4847	1919	7812	5815	1999
	2%	1%	4%	2%	1%
grade 4 events	4629	1817	7800	5282	1905
	1%	1%	4%	2%	1%
grade 5 events	18881	6767	19388	9777	7479
	7%	4%	10%	4%	4%
grade 6 events	60003	3675	44541	14396	3663
	25%	2%	23%	6%	2%
grade 7 events	99762	140661	81525	146570	137361
	41%	84%	43%	69%	84%

2.2 Compared Parameters

Parameter	Planned	Actual	Parameter	Planned	Actual
Instrument	ACIS	ACIS	Obspar format version number	7	7
Detector	ACIS-56789	ACIS-56789	Obspar file type	PREDICTED	ACTUAL
Grating	NONE	NONE	Obspar update status	NONE	UPDATED
Data mode	VFAINT	VFAINT	CCD I0 on	N	N
Observation mode	POINTING	POINTING	CCD I1 on	N	N
[deg] Pointing RA	253.471836	253.5064973483818	CCD I2 on	N	N
[deg] Pointing Dec	-39.850764	-39.84463491704082	CCD I3 on	N	N
[deg] Pointing Roll	341.981684	342.1605373921749	CCD S0 on	N	N
[s] Window start time (MET)	360316866.184000	360316866.184000	CCD S1 on	Y	Y
[s] Window stop time (MET)	361267266.184000	361267266.184000	CCD S2 on	Y	Y
[mm] SIM focus pos	-0.684267	-0.6828225247311905	CCD S3 on	Y	Y
[mm] SIM defocus	0	0.001444936568705701	CCD S4 on	Y	Y
[mm] SIM translation stage pos	-190.132523	-190.1425803651734	CCD S5 on	O1	Y
[mm] SIM translation stage offset	0	0.01005778216563158	Number of optional ACIS chips dropped	0	0
[s] Observation start time (MET)	360816429.184000	360815238.78882	On-chip summing requested	N	N
Observation start date	2009-06-08T02:46:03	2009-06-08T02:27:18	Subarray requested	NONE	NONE
[s] Observation end time (MET)	360834729.184000	360835902.27735	Alternating exposures requested	N	N
Observation end date	2009-06-08T07:51:03	2009-06-08T08:11:42	[s] Primary exposure time	0.000000	3.1
Read mode	TIMED	TIMED			

2.3 Aspect



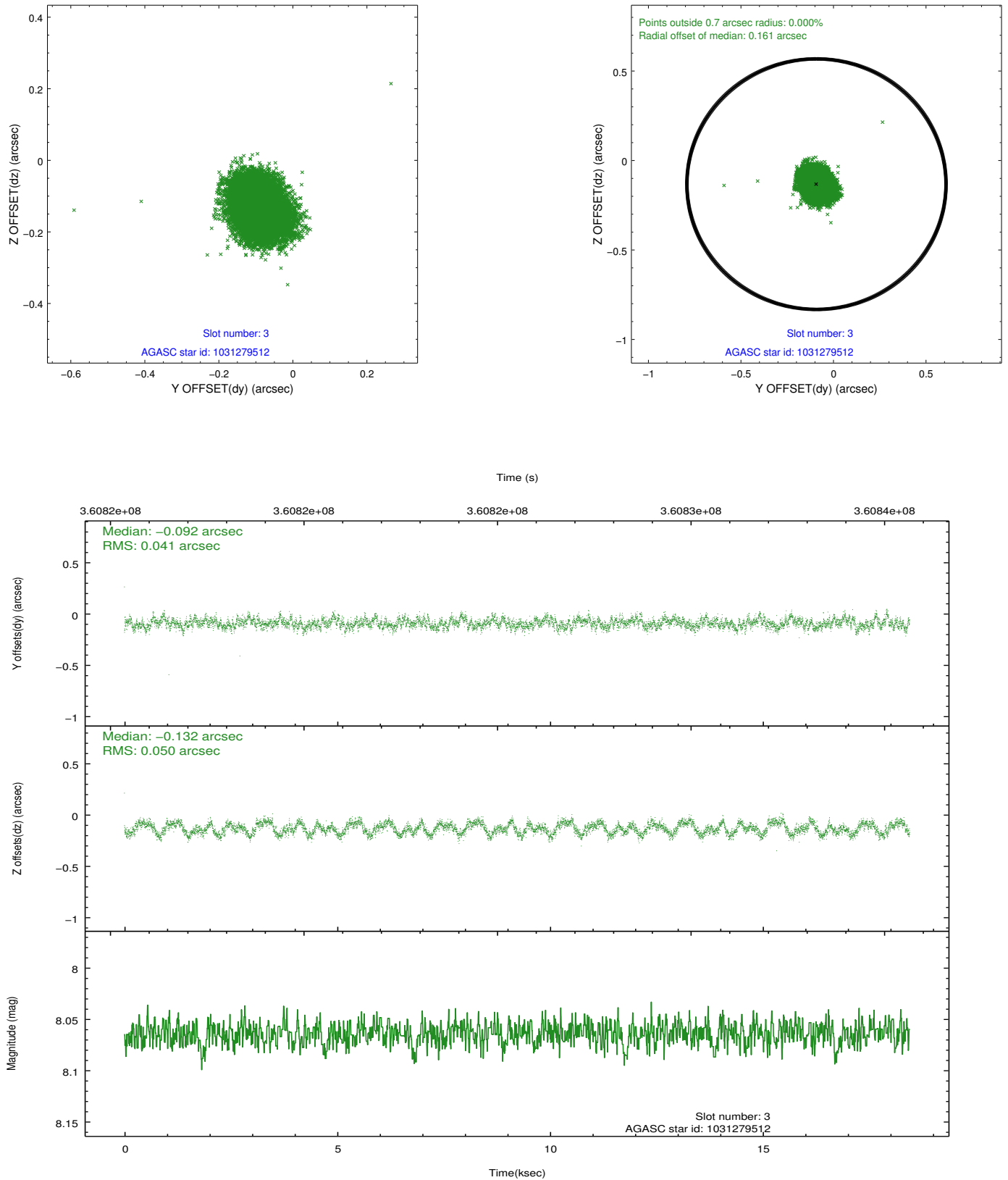


Slot Statistics

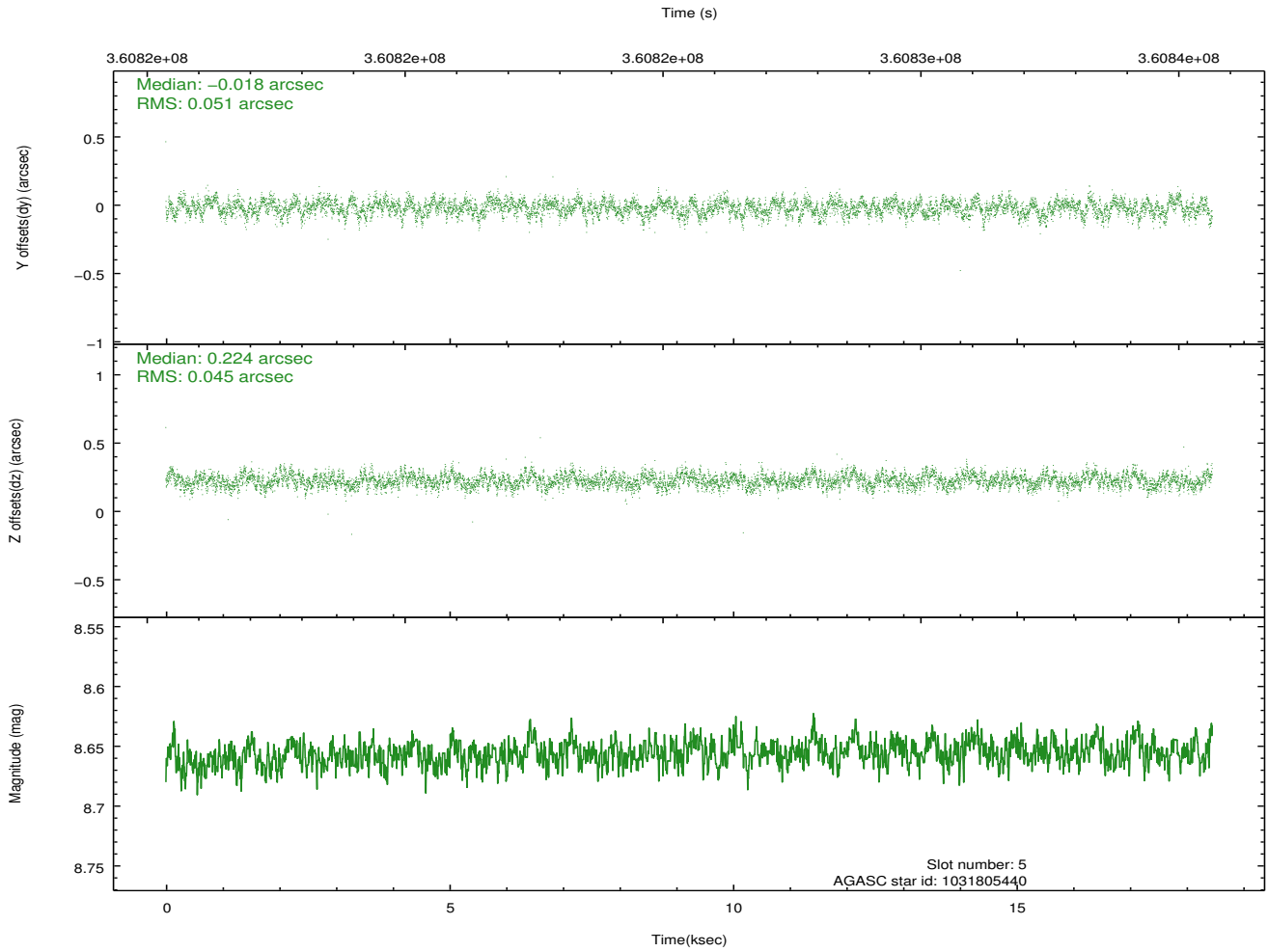
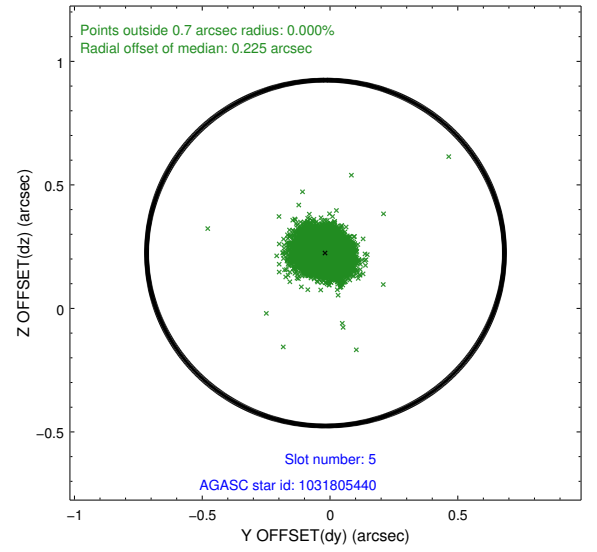
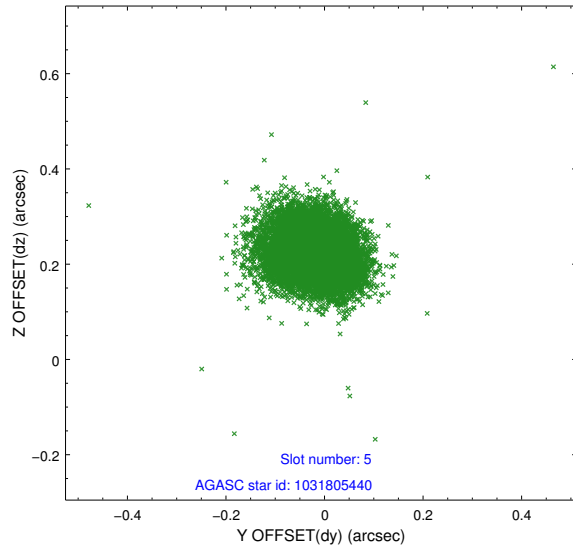
slot	status	id	mag	n_pts	med_dy	med_dz	dr1	dr2	ra	dec	mean_y	mean_z
0	FID	ACIS-S-2	6.87	4501	-0.029	-0.031	0.012	0.021	0.000000	0.000000	-764.20	-1735.06
1	FID	ACIS-S-4	6.96	4501	0.107	0.023	0.012	0.022	0.000000	0.000000	2149.12	173.24
2	FID	ACIS-S-5	6.98	4502	-0.108	0.018	0.009	0.018	0.000000	0.000000	-1816.84	167.17
3	GUIDE	1031279512	8.06	9003	-0.092	-0.132	0.071	0.106	253.011652	-39.245400	-1893.12	1672.39
4	OMITTED		0.00	0	0.000	0.000	0.000	0.000	0.000000	0.000000	0.00	0.00
5	GUIDE	1031805440	8.66	8997	-0.018	0.224	0.072	0.115	252.853392	-39.733242	-1757.02	-132.44
6	GUIDE	1031807240	7.56	9003	-0.027	-0.027	0.066	0.112	253.730711	-40.524826	1425.12	-2089.07
7	GUIDE	1031802536	8.44	8995	0.134	-0.066	0.101	0.159	254.071271	-40.495693	2281.44	-1705.29

2.4 Star Slots

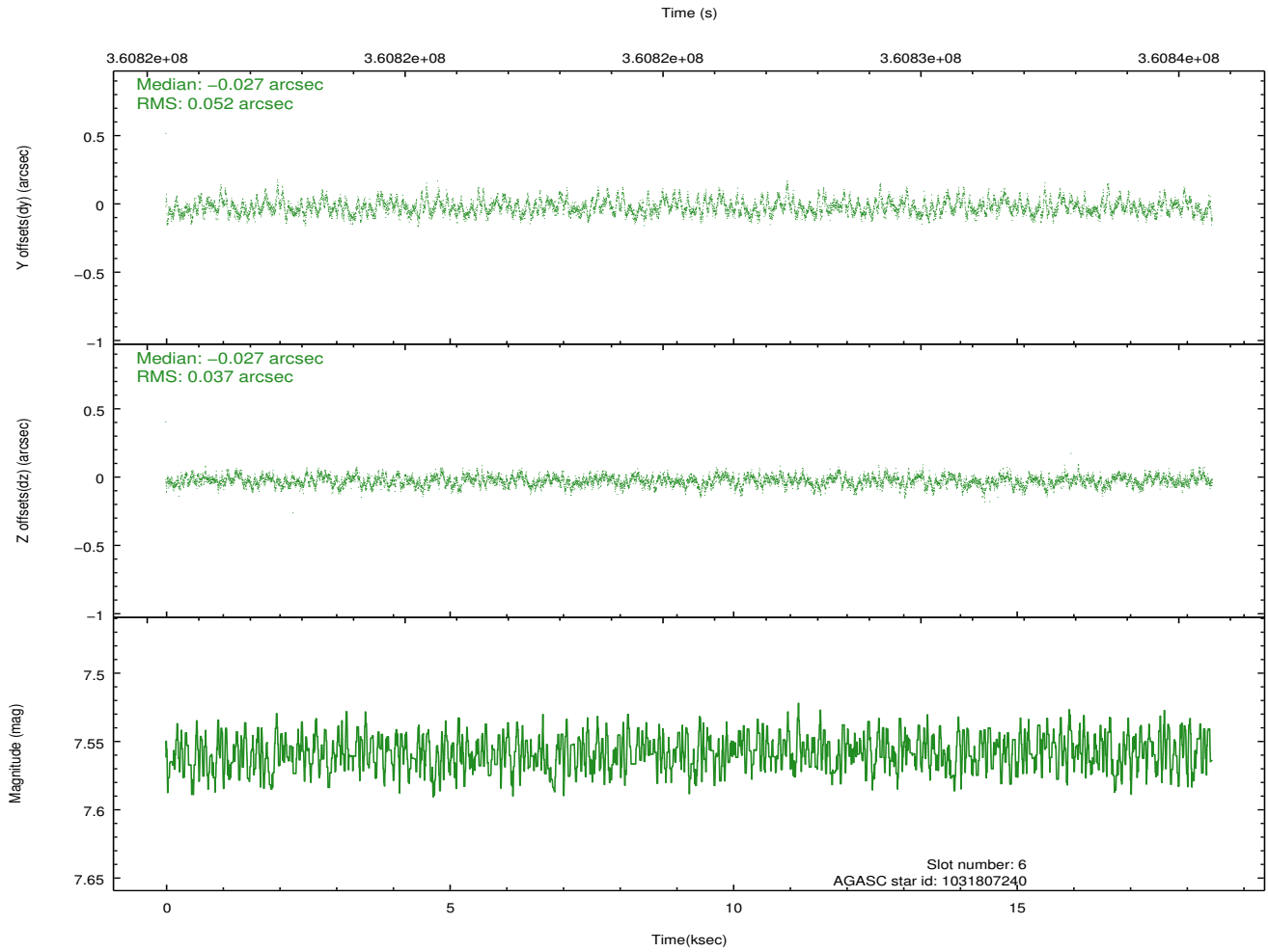
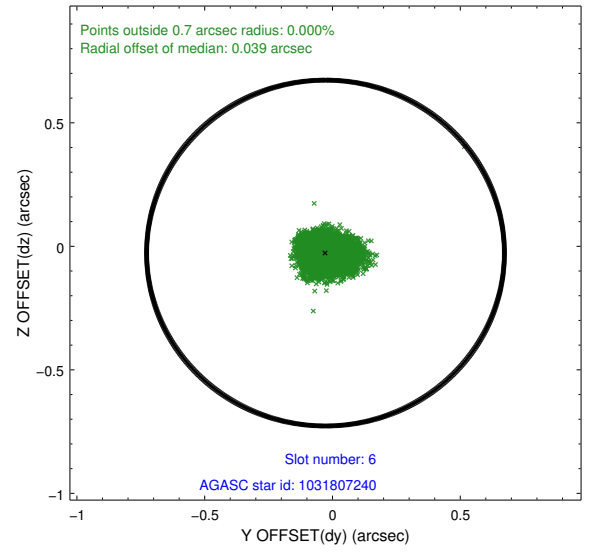
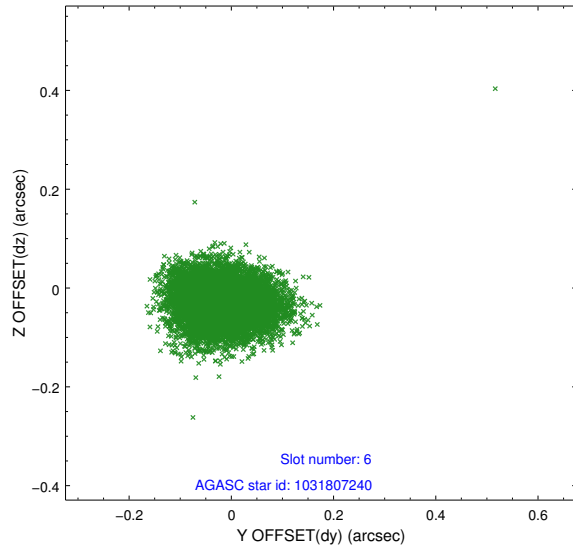
2.4.1 Slot 3



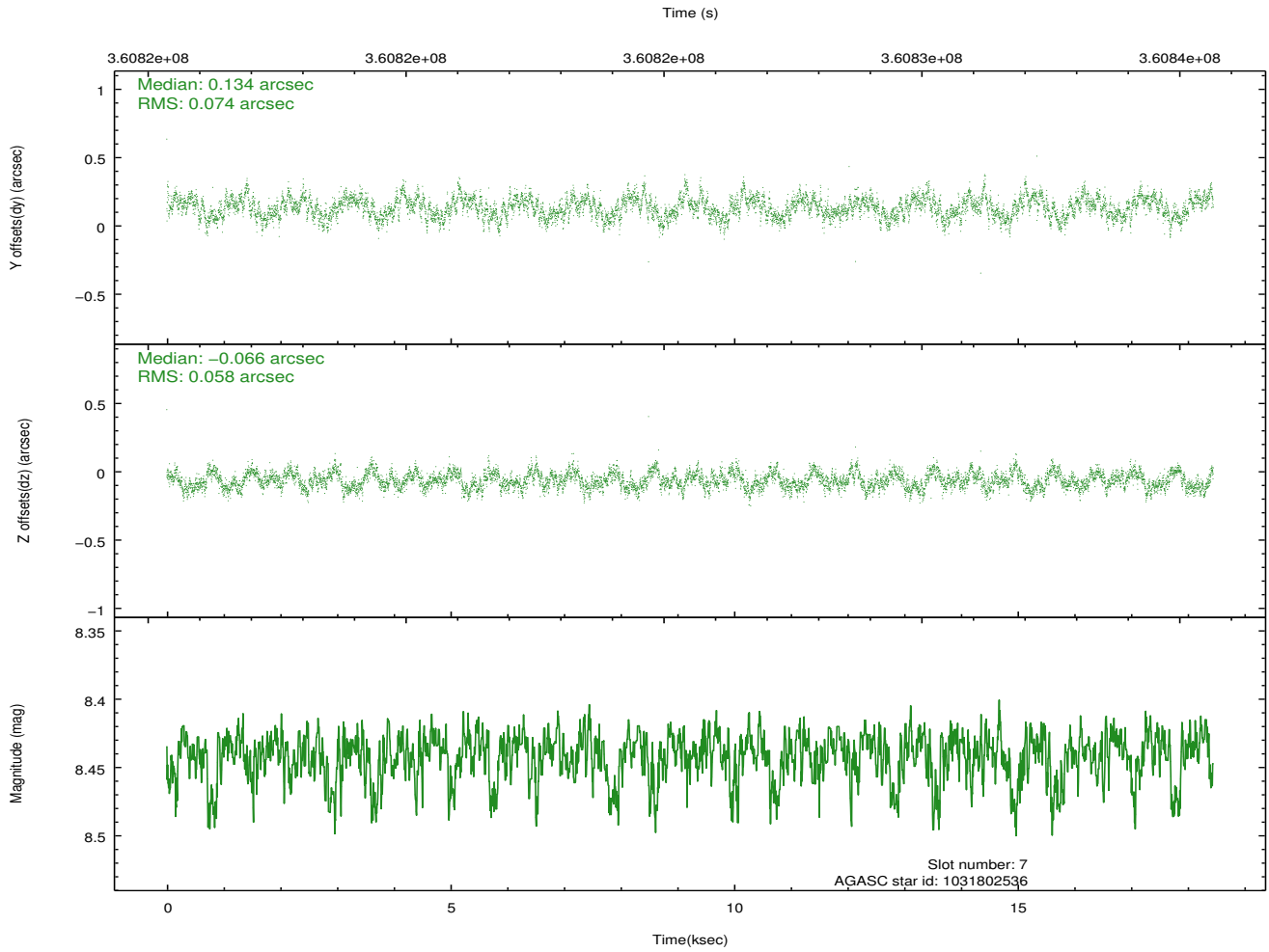
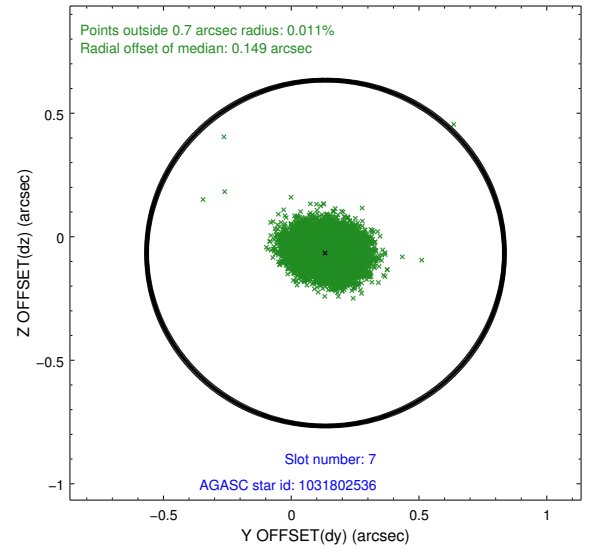
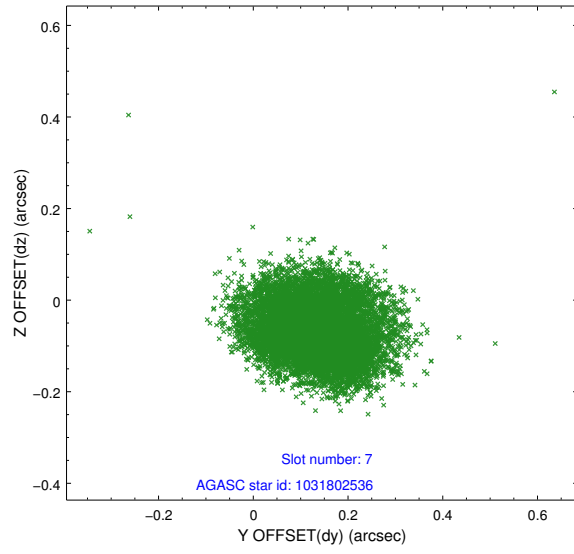
2.4.2 Slot 5



2.4.3 Slot 6

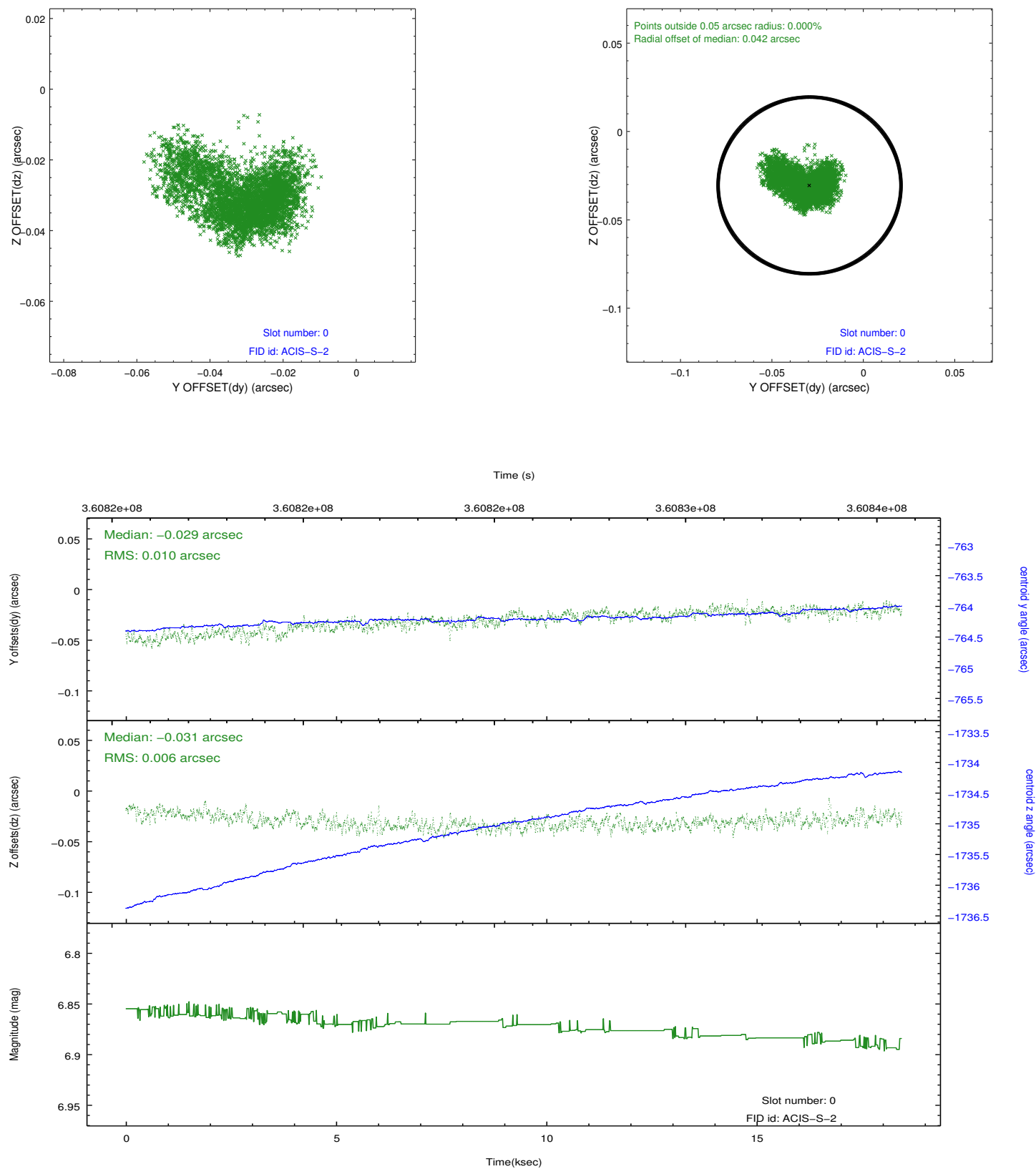


2.4.4 Slot 7

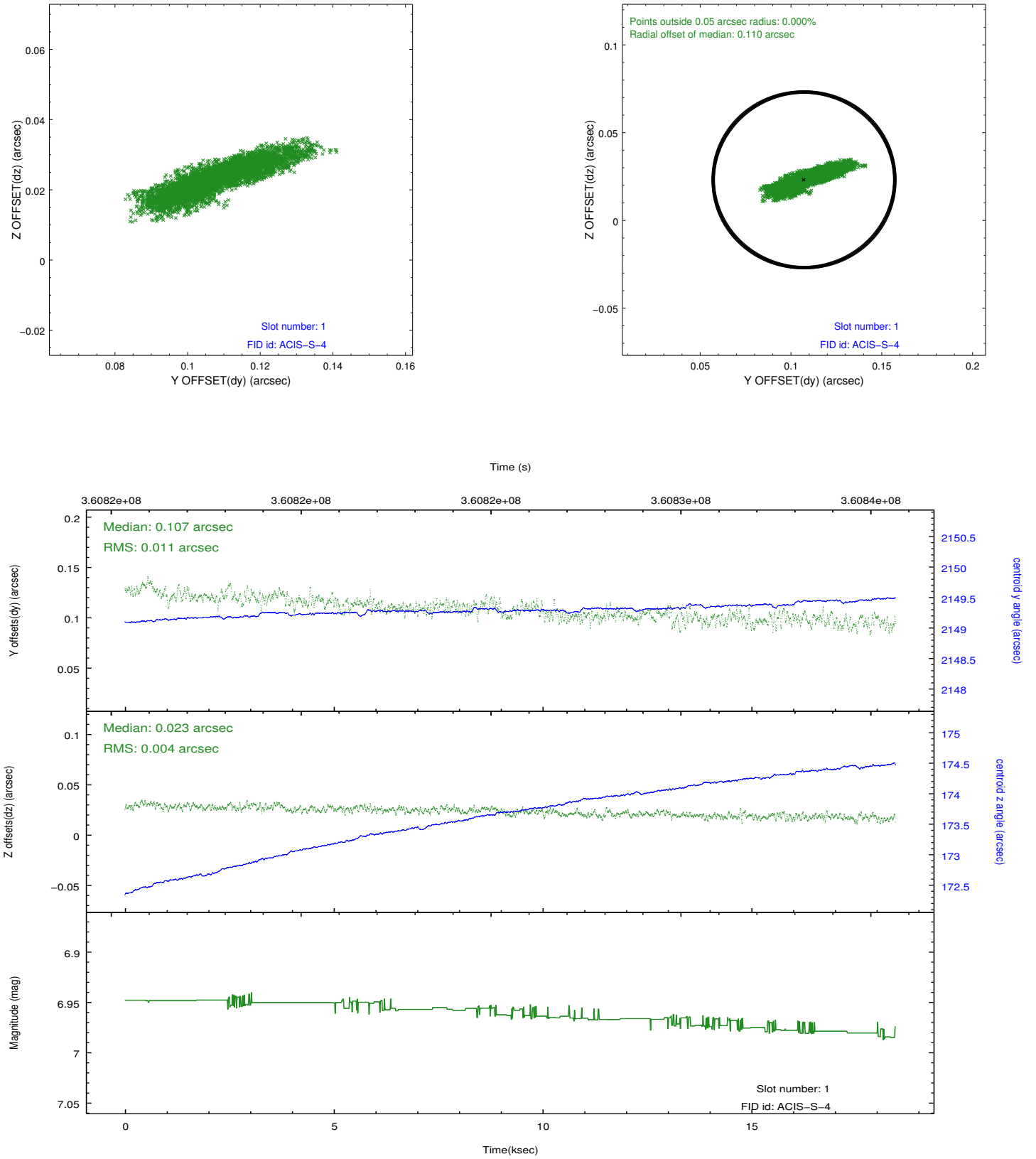


2.5 FID Slots

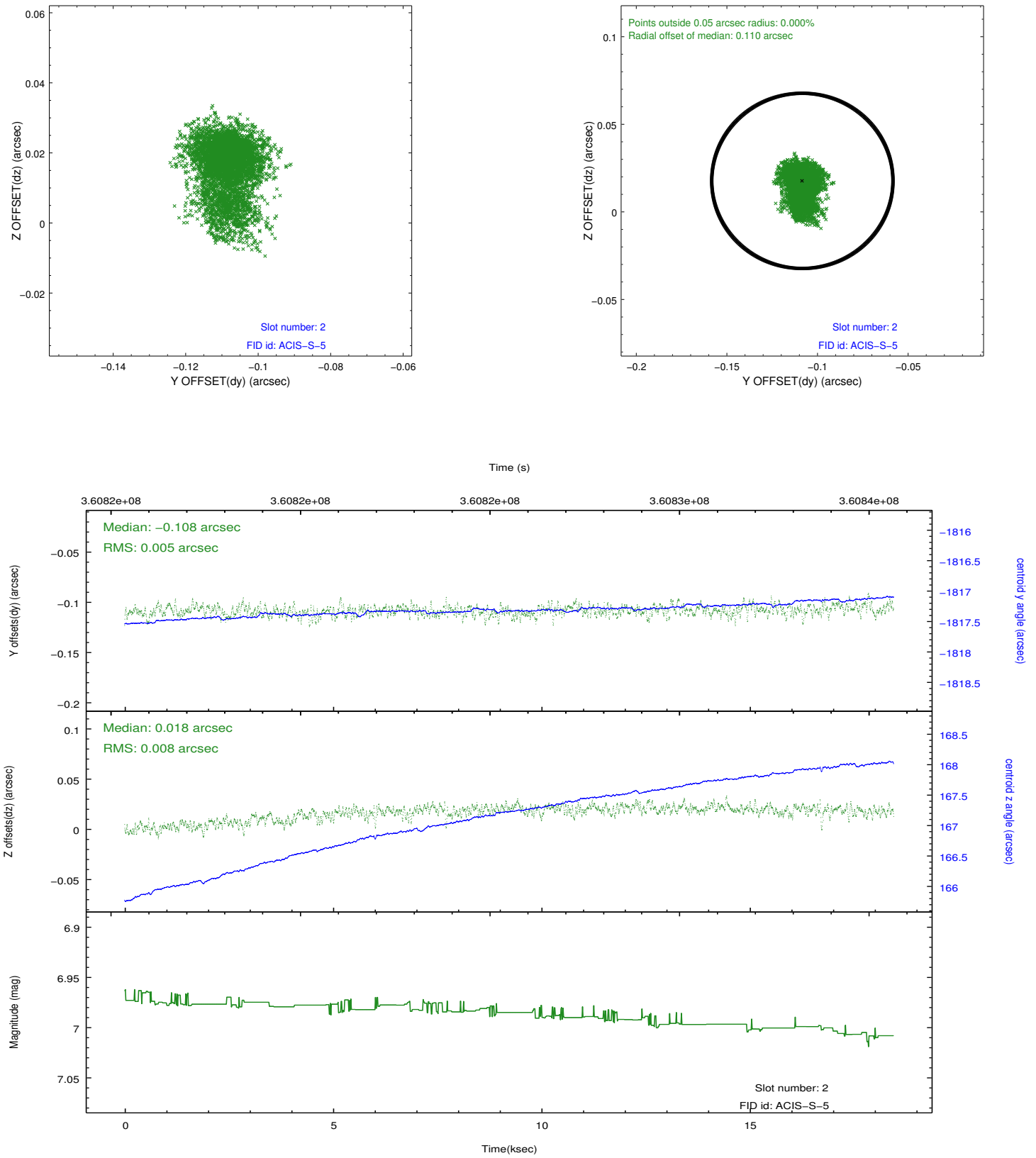
2.5.1 Slot 0



2.5.2 Slot 1



2.5.3 Slot 2



A Summary

A.1 Status

V&V Scientist	Beth Sundheim
V&V Date (YYYY-MM-DD)	2012.06.12
V&V Edition	1
V&V Disposition and Status	OK
V&V Charge Time	18.4481001

A.2 Comments

Window preference met.

The guide star in slot 4 was removed from the aspect solution due to poor data quality. The aspect solution is improved by the removal of this star from the solution.