

V&V Reference Report

L2 ASCDS Version : 8.4.4

Observation 9964 - L2 Version 2
Chandra X-Ray Center

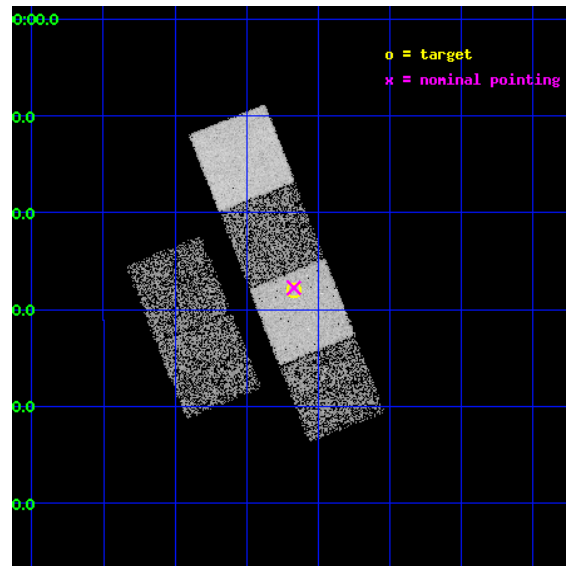
L2 Processing Date : May 30 2012

Contents

1	Front	2
2	OBI	3
2.1	OBI	3
2.1.1	Images	3
2.1.2	Bias	3
2.1.3	Parameters	4
2.1.4	Events	4
2.2	Compared Parameters	5
2.3	Aspect	6
2.4	Star Slots	9
2.4.1	Slot 3	9
2.4.2	Slot 4	10
2.4.3	Slot 5	11
2.4.4	Slot 6	12
2.4.5	Slot 7	13
2.5	FID Slots	14
2.5.1	Slot 0	14
2.5.2	Slot 1	15
2.5.3	Slot 2	16
A	Summary	17
A.1	Status	17
A.2	Comments	17

1 Front

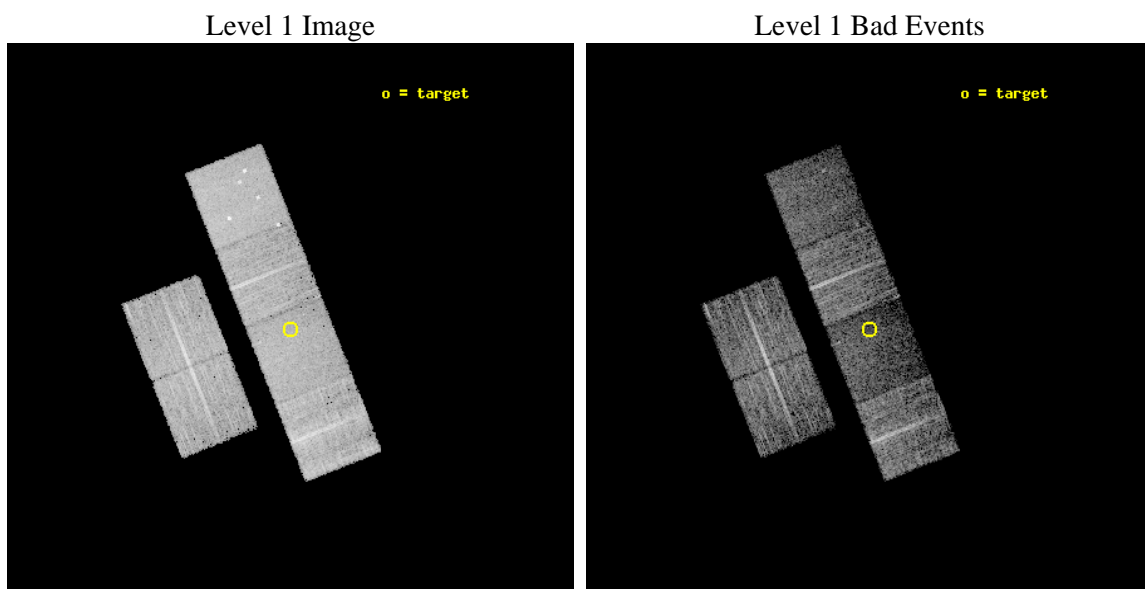
seq_num	300251	Sequence number
obs_id	9964	Observation id
title	Searching for Millisecond Pulsars in Extremely Low-Mass White Dwarf Binaries	Proposal title
observer	Prof. Craig Heinke	Principal investigator
object	SDSS J123410-022802	Source name
dtcycle	0	
cycle	P	events from which exps? Prim/Second/Both
ra_targ	188.543333	Observer's specified target RA [deg]
dec_targ	-2.467444	Observer's specified target Dec [deg]
ra_nom	188.54237970287	Nominal RA [deg]
dec_nom	-2.462748891344	Nominal Dec [deg]
roll_nom	68.365323587582	Nominal Roll [deg]
revision	2	Processing version of data
ontime	5331.1999801993	Sum of GTIs [s]
livetime	5263.6931159868	Livetime [s]
ontime2	5331.1999801993	Sum of GTIs [s]
ontime3	5331.1999801993	Sum of GTIs [s]
ontime5	5331.1999801993	Sum of GTIs [s]
ontime6	5331.1999801993	Sum of GTIs [s]
ontime7	5331.1999801993	Sum of GTIs [s]
ontime8	5331.1999801993	Sum of GTIs [s]
l2events	62146	Number of level 2 events



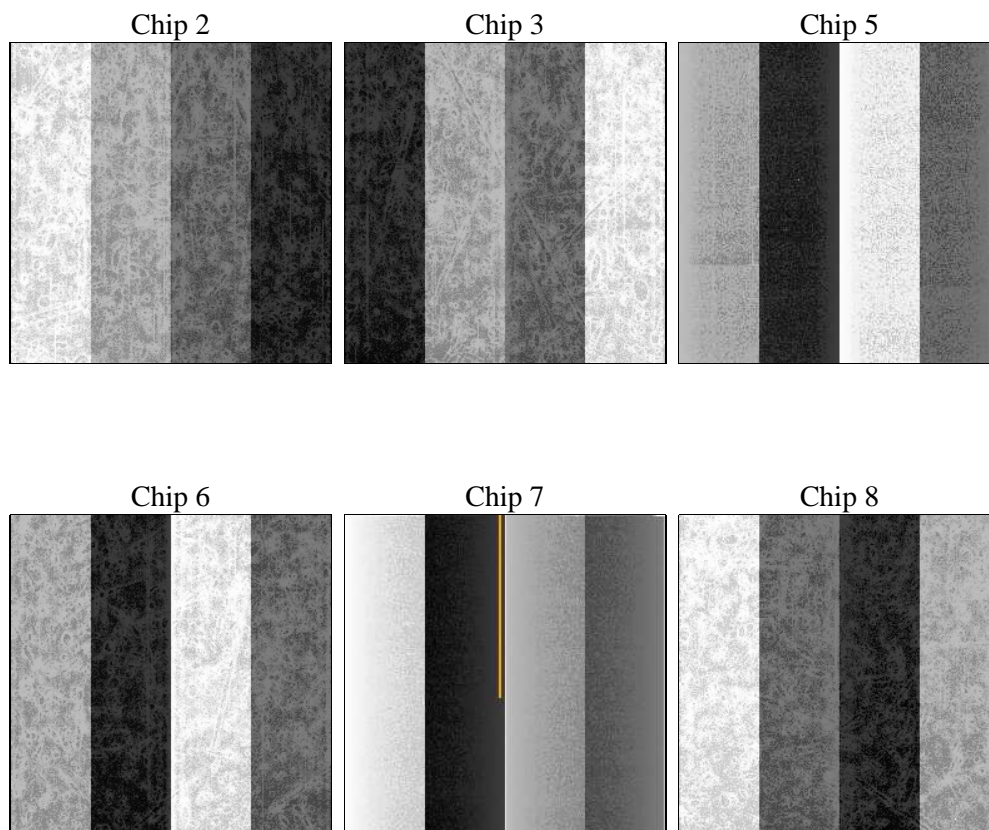
2 OBI

2.1 OBI

2.1.1 Images



2.1.2 Bias



2.1.3 Parameters

obi_num	0	Obi number	sched_exp_time	5200.000000	[s] Scheduled observation exposure time
ascdsver	8.4.4	Processing system revision	ontime	5331.1999801993	Sum of GTIs [s]
caldsver	4.4.9	 	ontime2	5331.1999801993	Sum of GTIs [s]
date	2012-05-31T02:03:34	Date and time of file creation	ontime3	5331.1999801993	Sum of GTIs [s]
revision	2	Processing version of data	ontime5	5331.1999801993	Sum of GTIs [s]
			ontime6	5331.1999801993	Sum of GTIs [s]
			ontime7	5331.1999801993	Sum of GTIs [s]
			ontime8	5331.1999801993	Sum of GTIs [s]
			l1events	293646	Number of level 1 events

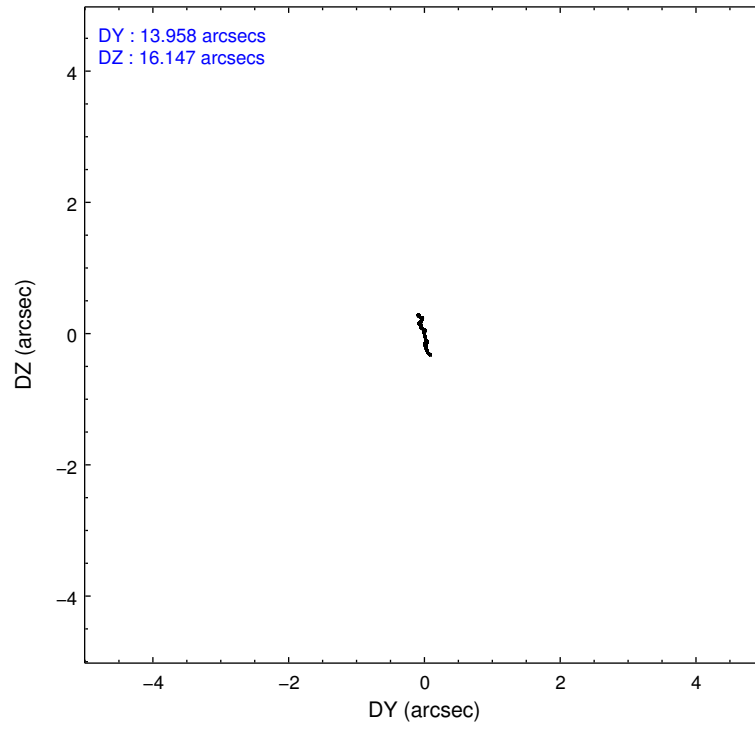
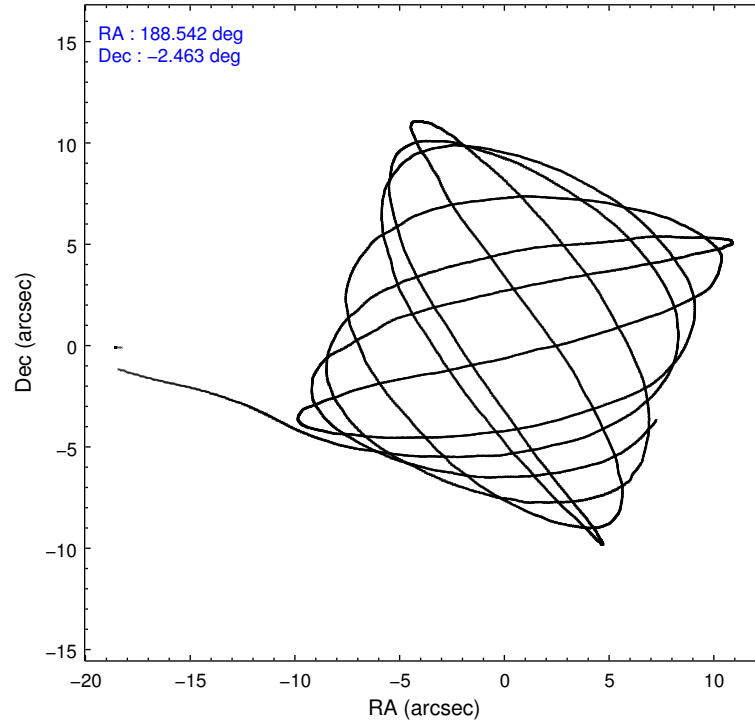
2.1.4 Events

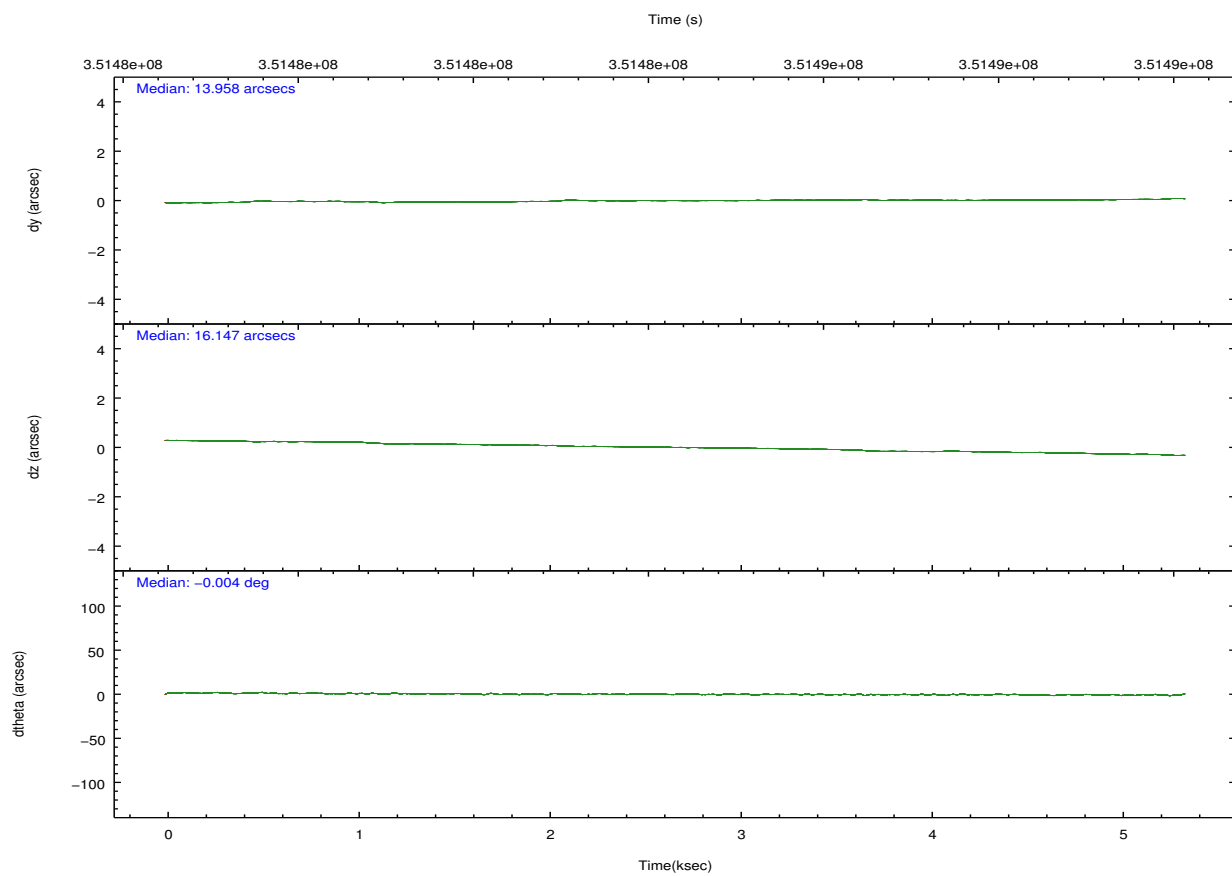
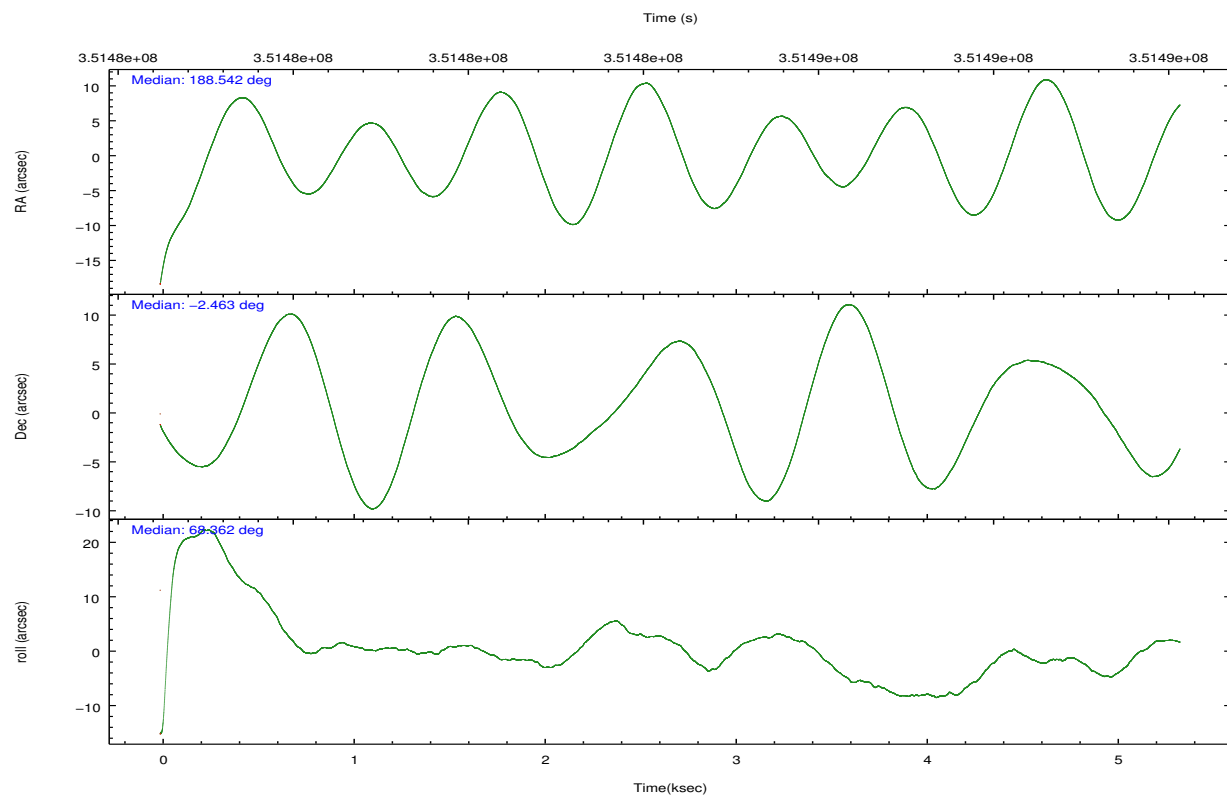
	ccd 2	ccd 3	ccd 5	ccd 6	ccd 7	ccd 8		ccd 2	ccd 3	ccd 5	ccd 6	ccd 7	ccd 8
level 1 events	46329	43397	58923	45153	44114	55730	grade 0 events	1643	1511	4430	1813	2293	3864
rejected events	42126	39368	28552	40544	23337	42643		3%	3%	7%	4%	5%	6%
rejected %	90%	90%	48%	89%	52%	76%	grade 1 events	34	24	201	27	91	46
								0%	0%	0%	0%	0%	0%
							grade 2 events	1073	956	9413	1012	4679	3252
								2%	2%	15%	2%	10%	5%
							grade 3 events	482	491	1364	537	2013	1569
								1%	1%	2%	1%	4%	2%
							grade 4 events	433	444	1366	493	2058	1353
								0%	1%	2%	1%	4%	2%
							grade 5 events	1303	1607	4645	1537	4770	2422
								2%	3%	7%	3%	10%	4%
							grade 6 events	783	806	15163	962	10639	3816
								1%	1%	25%	2%	24%	6%
							grade 7 events	40578	37558	22341	38772	17571	39408
								87%	86%	37%	85%	39%	70%

2.2 Compared Parameters

Parameter	Planned	Actual	Parameter	Planned	Actual
Instrument	ACIS	ACIS	Obspar format version number	7	7
Detector	ACIS-235678	ACIS-235678	Obspar file type	PREDICTED	ACTUAL
Grating	NONE	NONE	Obspar update status	NONE	UPDATED
Data mode	VFAINT	VFAINT	CCD I0 on	N	N
Observation mode	POINTING	POINTING	CCD I1 on	N	N
[deg] Pointing RA	188.546835	188.5423797028683	CCD I2 on	O2	Y
[deg] Pointing Dec	-2.489665	-2.462748891343985	CCD I3 on	O3	Y
[deg] Pointing Roll	68.208975	68.36532358758184	CCD S0 on	N	N
[mm] SIM focus pos	-0.684267	-0.6828225247311905	CCD S1 on	O1	Y
[mm] SIM defocus	0	0.001444936568705701	CCD S2 on	Y	Y
[mm] SIM translation stage pos	-190.132523	-190.1425803651734	CCD S3 on	Y	Y
[mm] SIM translation stage offset	0	0.01005778216563158	CCD S4 on	O4	Y
[s] Observation start time (MET)	351482619.184000	351481450.46196	CCD S5 on	N	N
Observation start date	2009-02-20T02:02:33	2009-02-20T01:44:10	Number of optional ACIS chips dropped	0	0
[s] Observation end time (MET)	351487819.184000	351489174.86234	On-chip summing requested	N	N
Observation end date	2009-02-20T03:29:13	2009-02-20T03:52:54	Subarray requested	NONE	NONE
Read mode	TIMED	TIMED	Alternating exposures requested	N	N
			[s] Primary exposure time	0.000000	3.2

2.3 Aspect



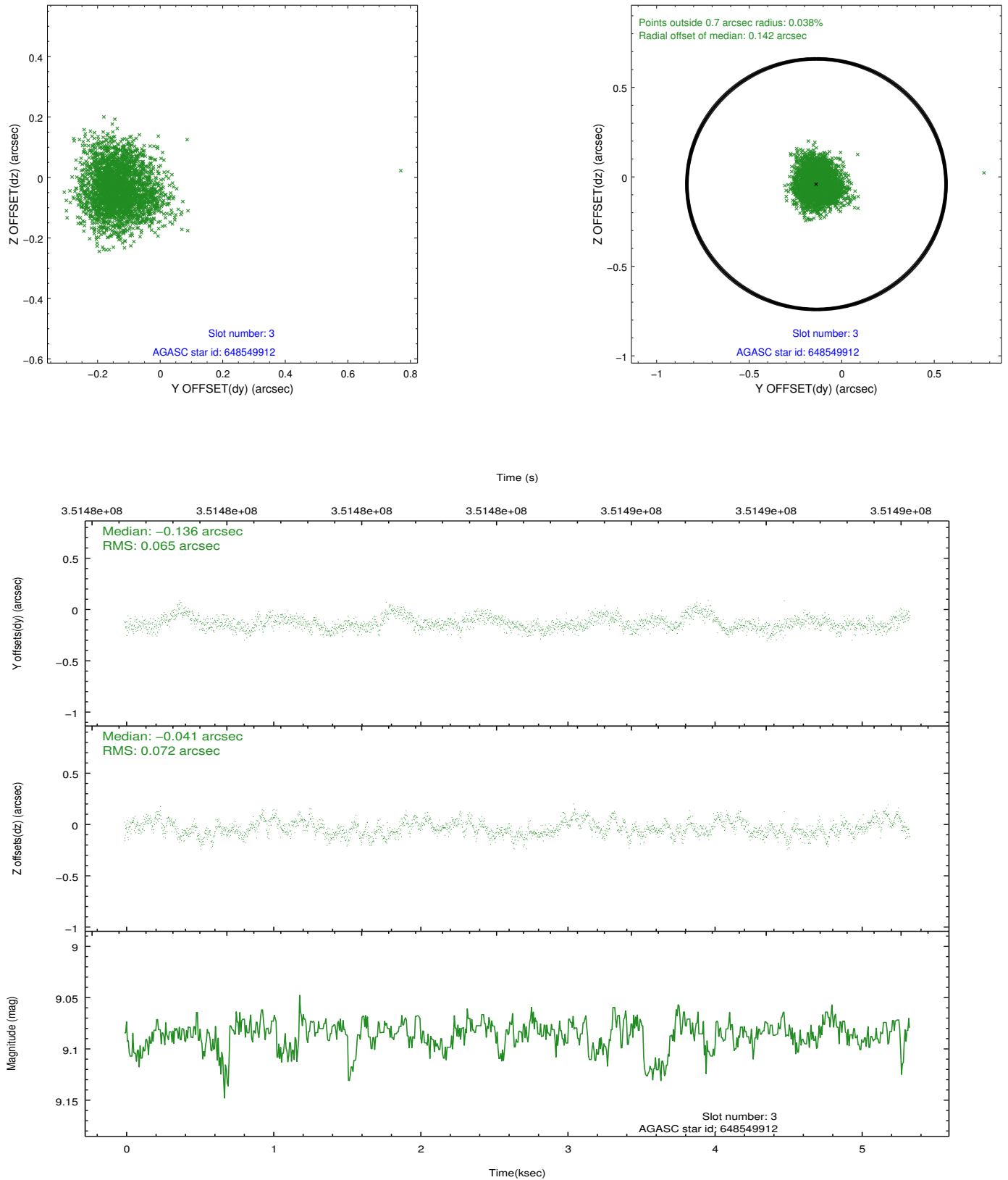


Slot Statistics

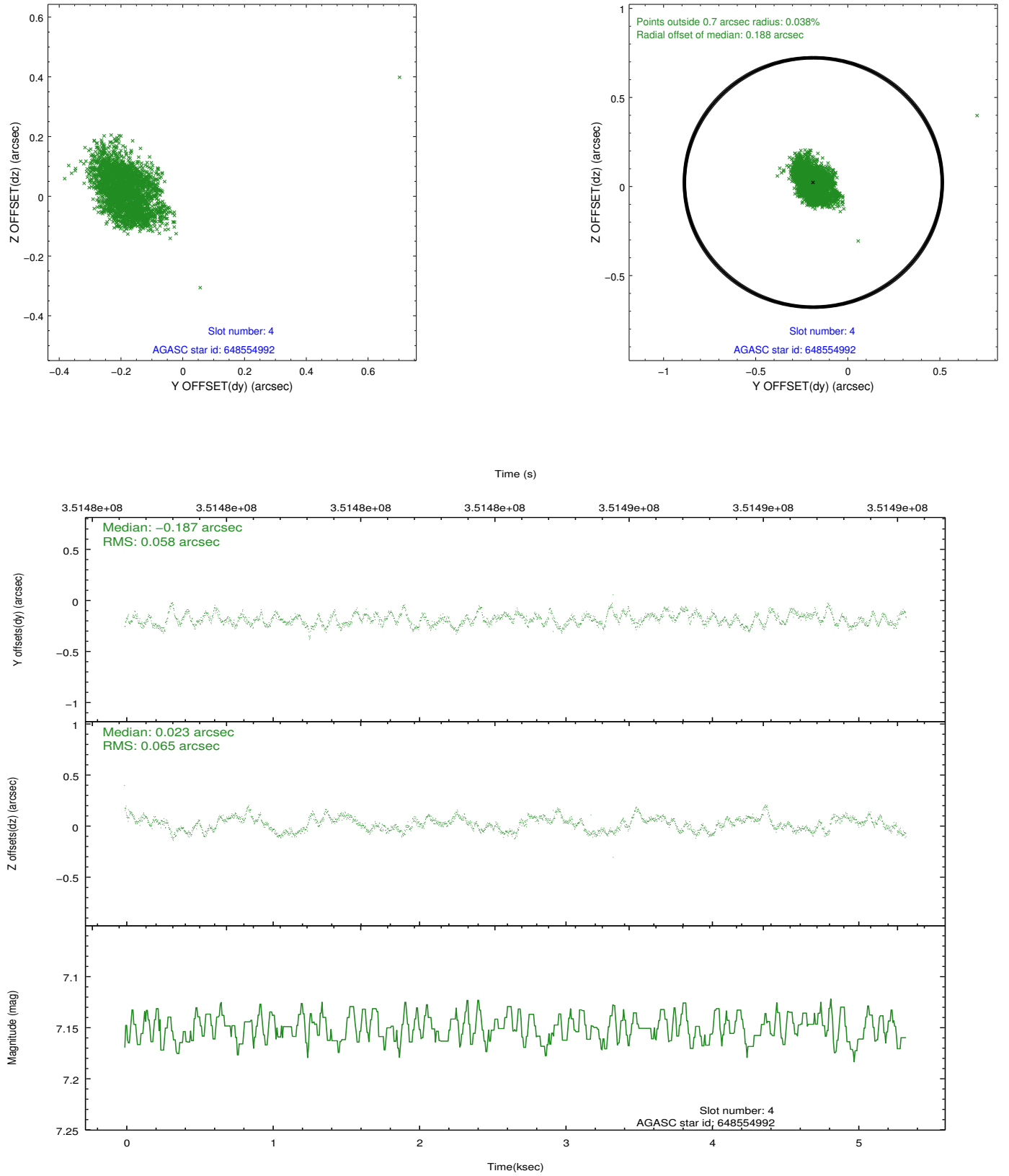
slot	status	id	mag	n_pts	med_dy	med_dz	dr1	dr2	ra	dec	mean_y	mean_z
0	FID	ACIS-S-2	6.88	1303	-0.050	-0.011	0.009	0.014	0.000000	0.000000	-766.93	-1737.52
1	FID	ACIS-S-4	6.97	1303	0.177	0.027	0.007	0.012	0.000000	0.000000	2146.05	169.84
2	FID	ACIS-S-5	6.99	1303	-0.158	-0.007	0.007	0.011	0.000000	0.000000	-1818.44	164.75
3	GUIDE	648549912	9.09	2603	-0.136	-0.041	0.105	0.165	188.950619	-2.341840	1034.13	-1150.77
4	GUIDE	648554992	7.15	2605	-0.187	0.023	0.090	0.143	189.278453	-2.322103	1537.06	-2222.07
5	GUIDE	648938032	9.92	2603	0.161	0.031	0.211	0.321	188.846564	-3.213888	-2019.20	-1969.72
6	GUIDE	648940328	8.65	2605	0.070	-0.080	0.108	0.163	188.929429	-3.016156	-1249.29	-1981.00
7	GUIDE	648941216	9.65	2600	0.092	0.062	0.127	0.194	188.912824	-3.013184	-1261.18	-1921.48

2.4 Star Slots

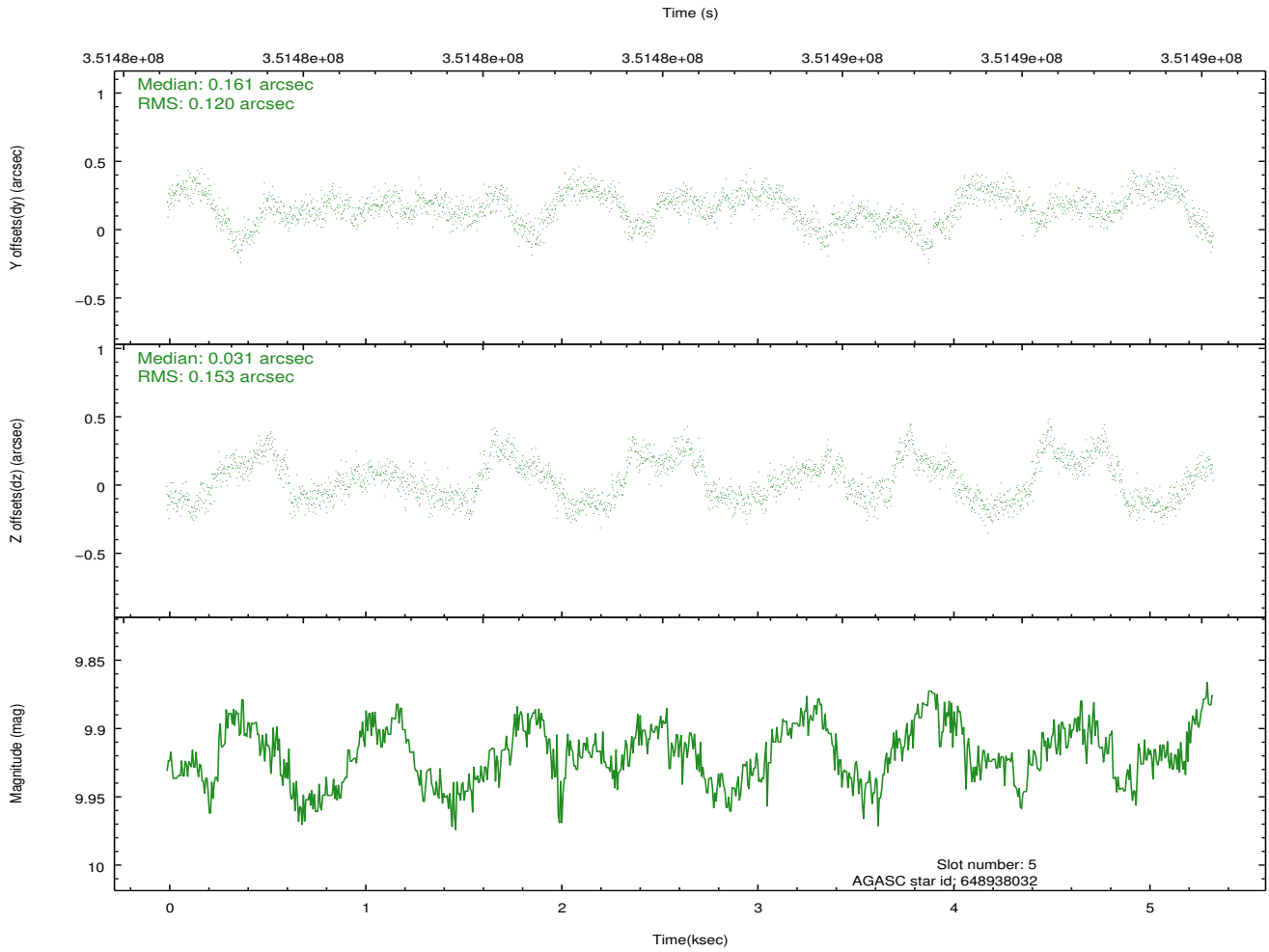
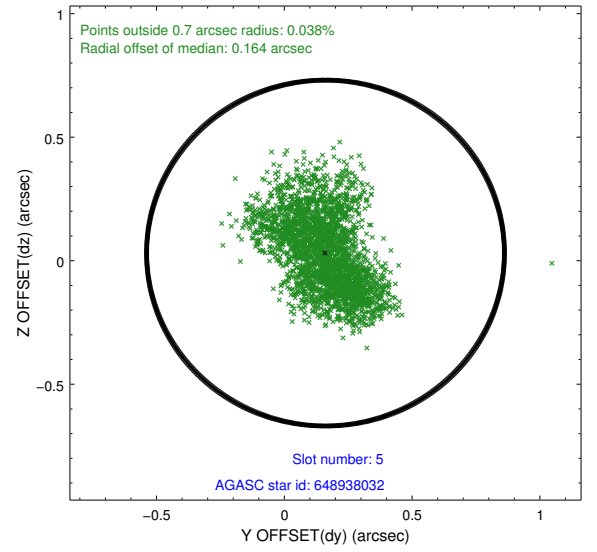
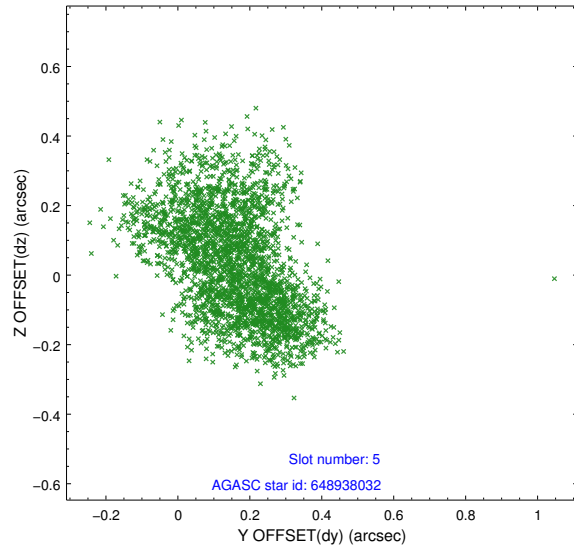
2.4.1 Slot 3



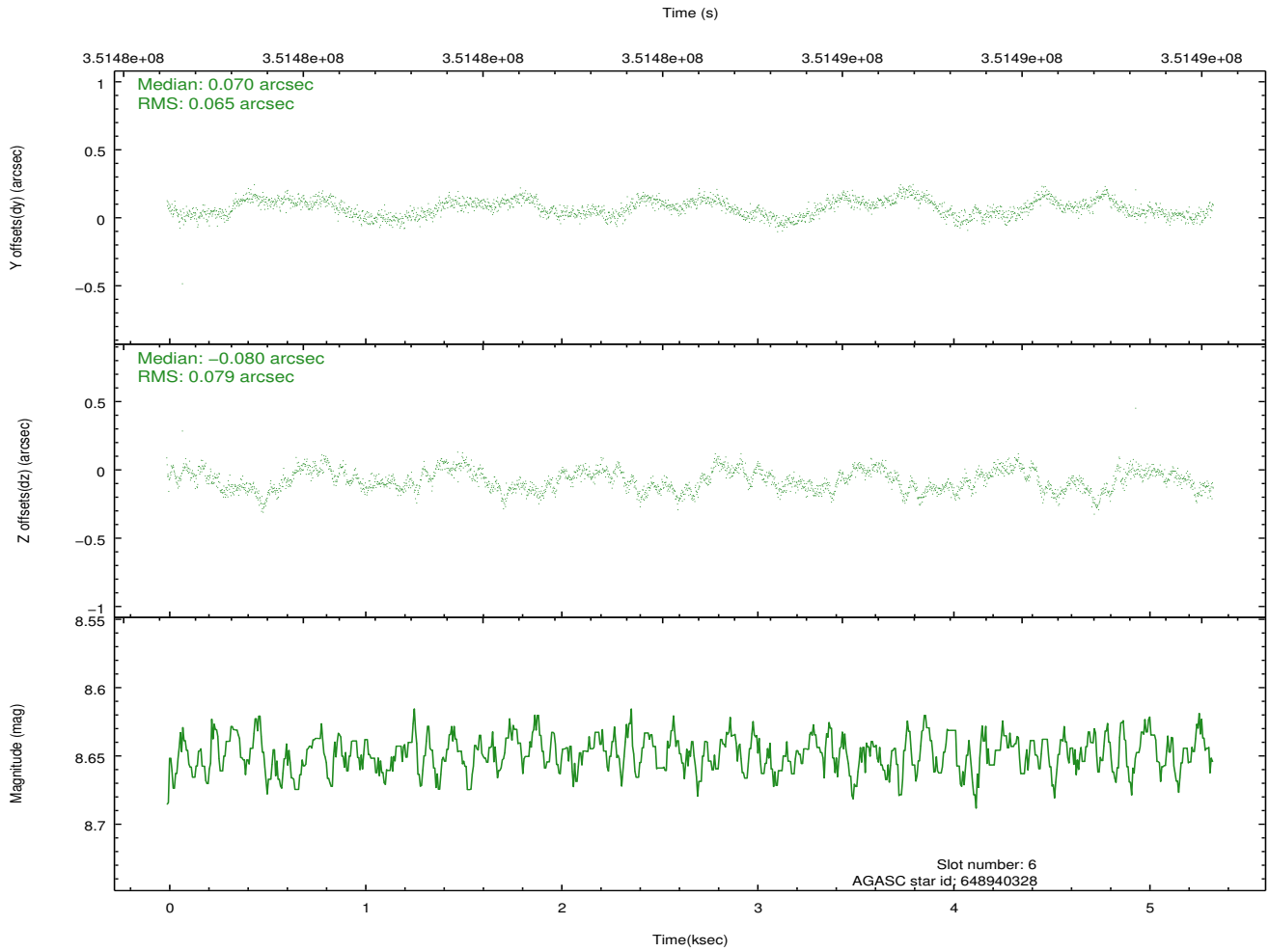
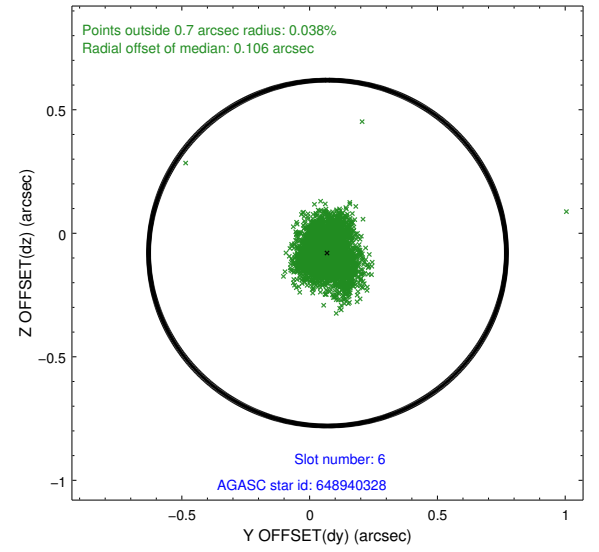
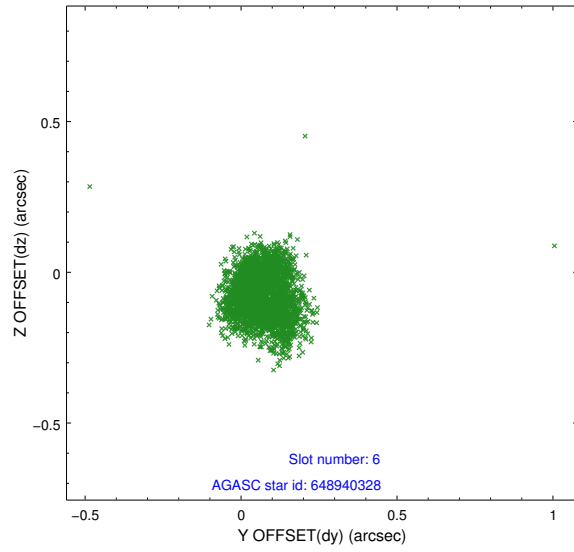
2.4.2 Slot 4



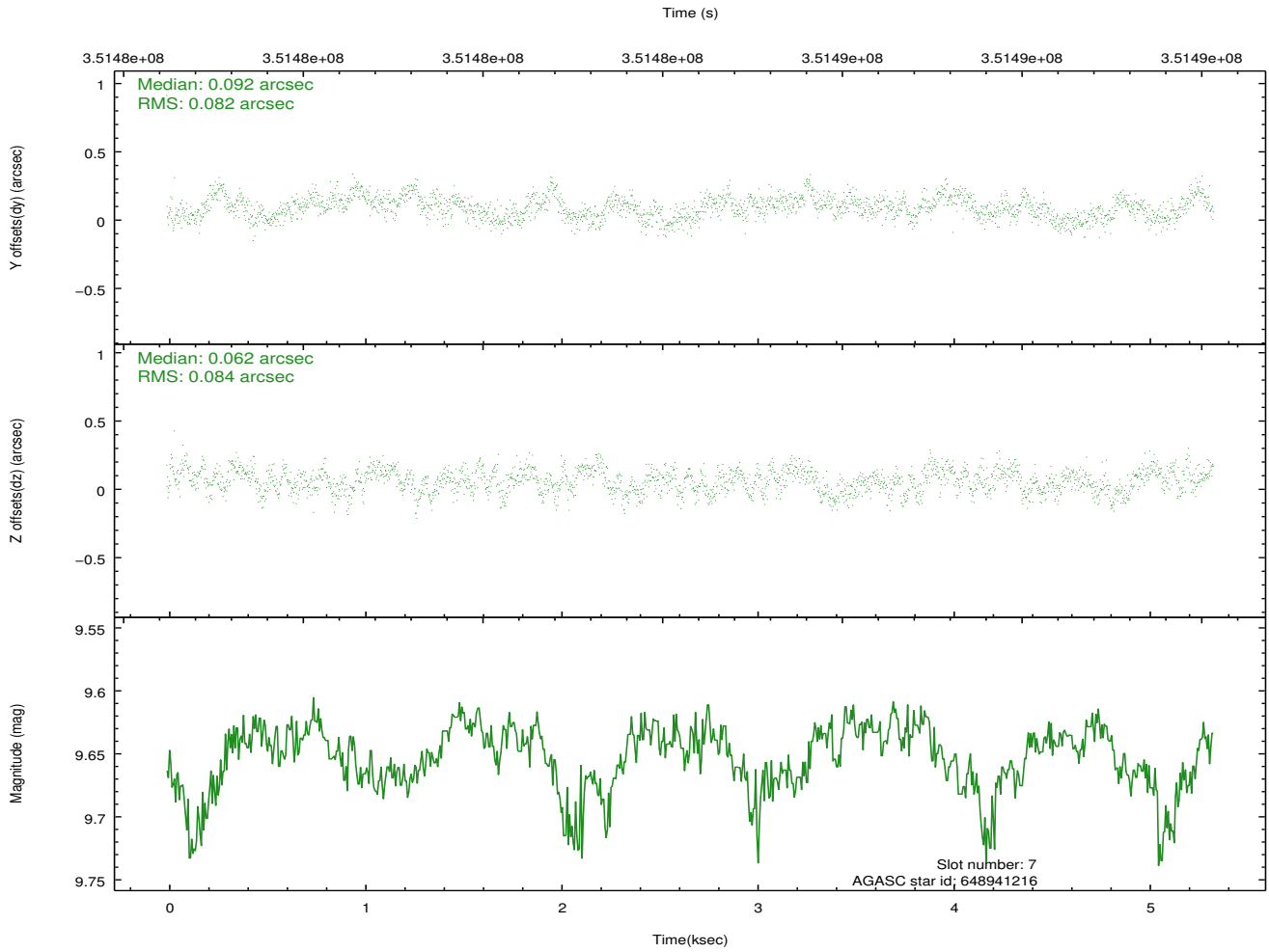
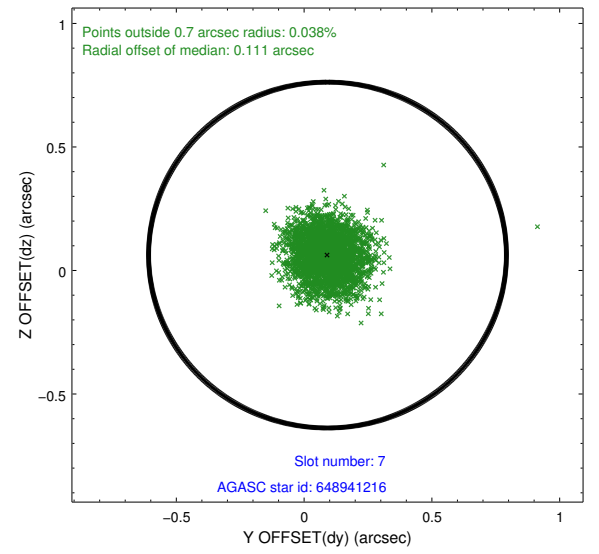
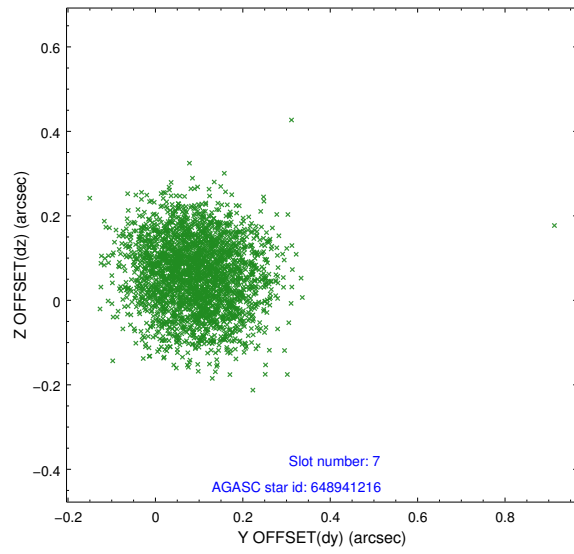
2.4.3 Slot 5



2.4.4 Slot 6

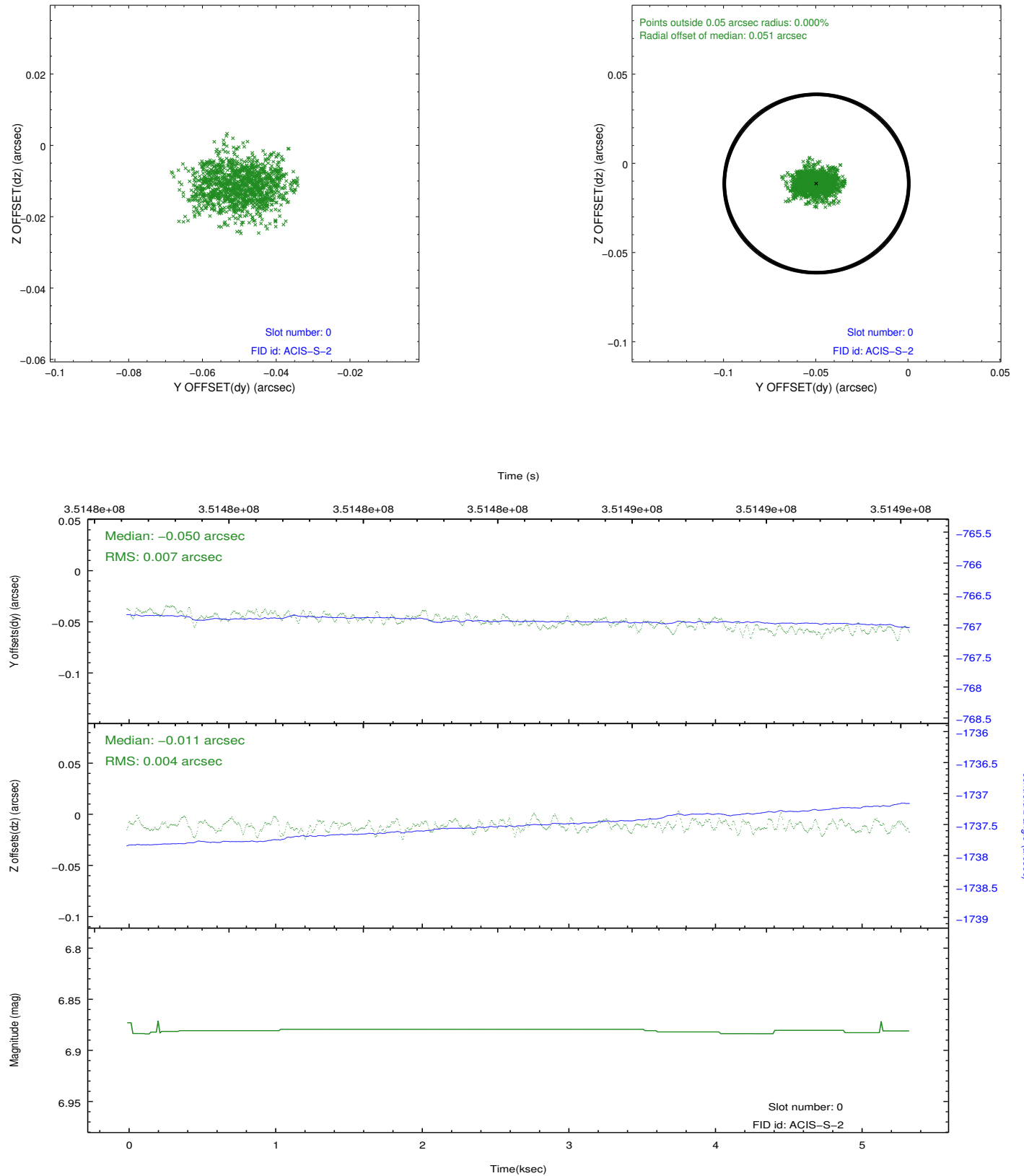


2.4.5 Slot 7

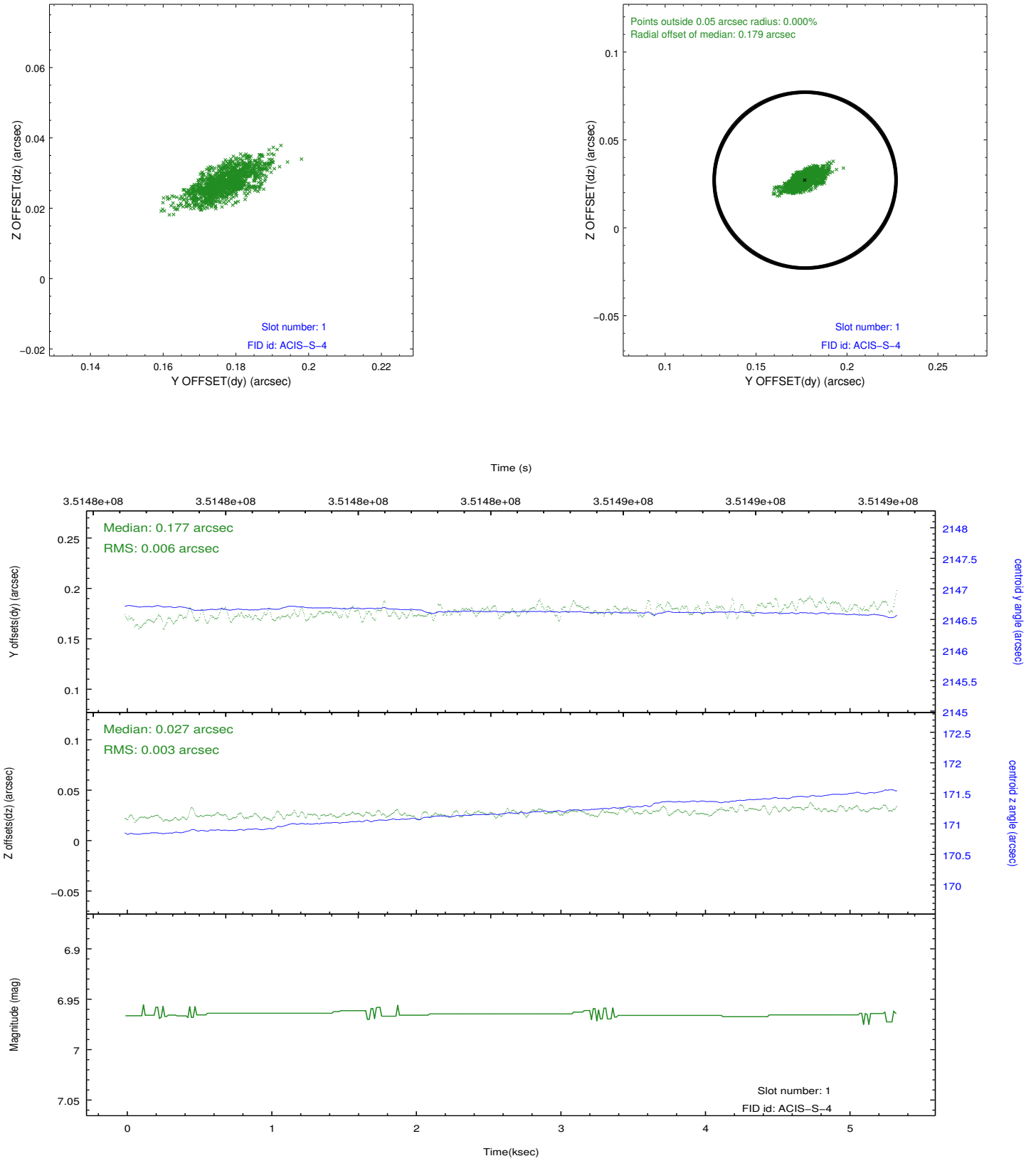


2.5 FID Slots

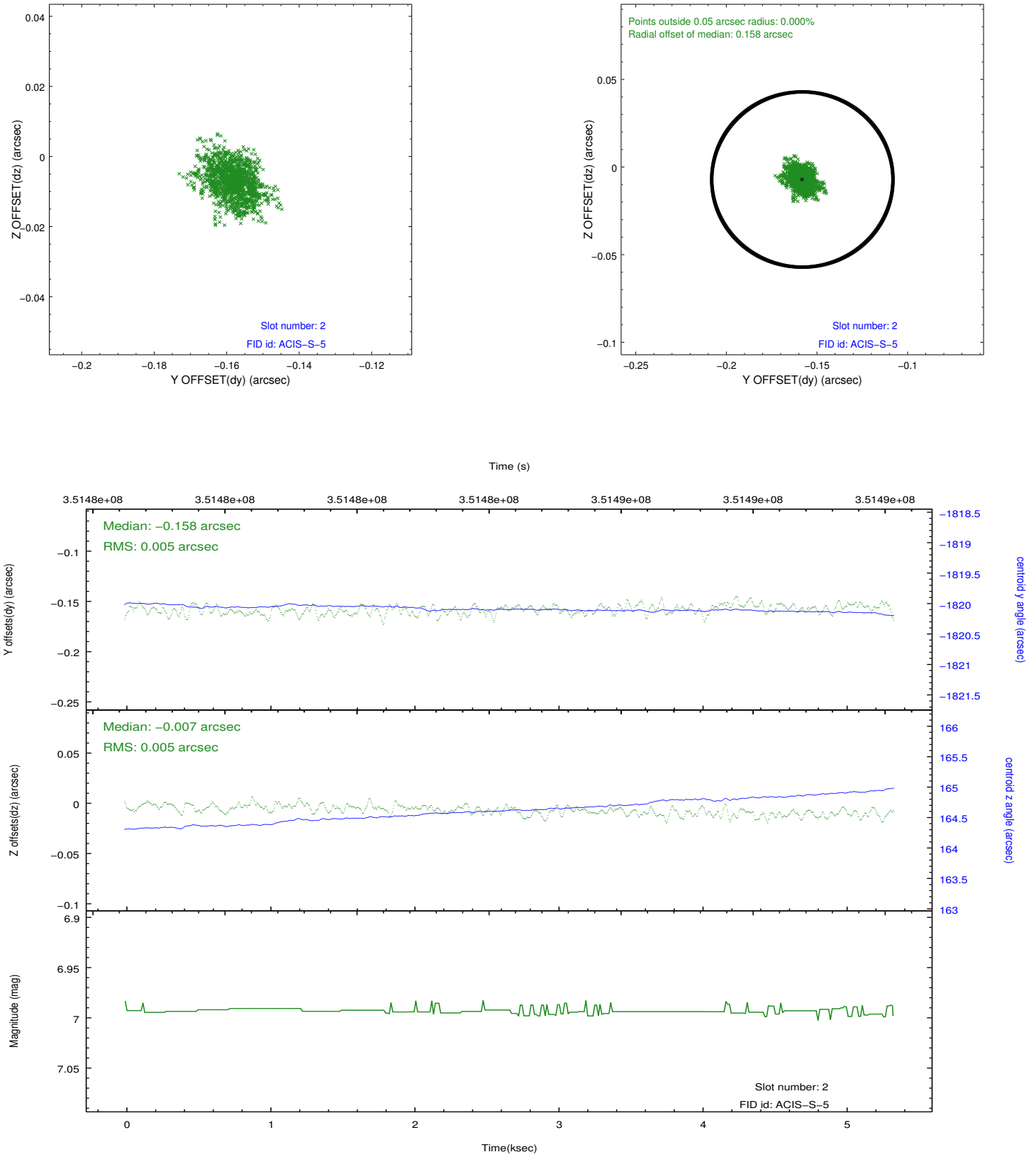
2.5.1 Slot 0



2.5.2 Slot 1



2.5.3 Slot 2



A Summary

A.1 Status

V&V Scientist	Joy Nichols
V&V Date (YYYY-MM-DD)	2012.06.05
V&V Edition	1
V&V Disposition and Status	OK
V&V Charge Time	5.33119998

A.2 Comments