

# V&V Reference Report

## L2 ASCDS Version : 8.4.4

Observation 9890 - L2 Version 2  
Chandra X-Ray Center

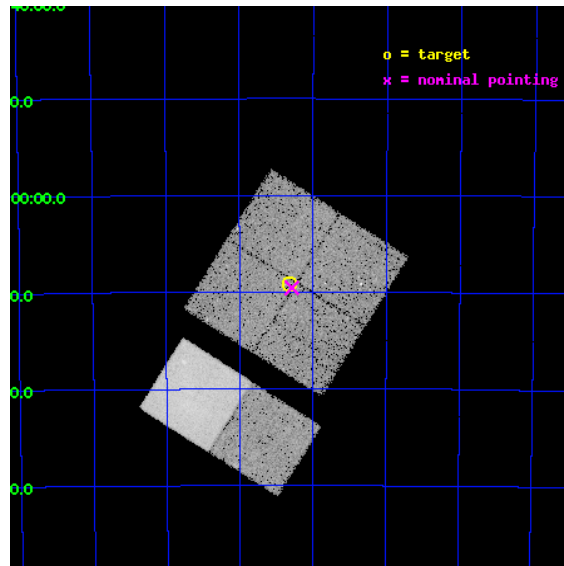
L2 Processing Date : May 18 2012

## Contents

<b>1</b>	<b>Front</b>	<b>2</b>
<b>2</b>	<b>OBI</b>	<b>3</b>
2.1	OBI . . . . .	3
2.1.1	Images . . . . .	3
2.1.2	Bias . . . . .	3
2.1.3	Parameters . . . . .	4
2.1.4	Events . . . . .	4
2.2	Compared Parameters . . . . .	5
2.3	Aspect . . . . .	6
2.4	Star Slots . . . . .	9
2.4.1	Slot 3 . . . . .	9
2.4.2	Slot 4 . . . . .	10
2.4.3	Slot 5 . . . . .	11
2.4.4	Slot 6 . . . . .	12
2.4.5	Slot 7 . . . . .	13
2.5	FID Slots . . . . .	14
2.5.1	Slot 0 . . . . .	14
2.5.2	Slot 1 . . . . .	15
2.5.3	Slot 2 . . . . .	16
<b>A</b>	<b>Summary</b>	<b>17</b>
A.1	Status . . . . .	17
A.2	Comments . . . . .	17

# 1 Front

seq_num	900824	Sequence number
obs_id	9890	Observation id
title	The Great Nebula in Carina: Protoplanetary Disks to Starburst Galaxies	Proposal title
observer	Dr. Leisa Townsley	Principal investigator
object	Carina Clusters Ptg 7	Source name
dtcycle	0	&#160
cycle	P	events from which exps? Prim/Second/Both
ra_targ	160.832083	Observer's specified target RA [deg]
dec_targ	-59.153139	Observer's specified target Dec [deg]
ra_nom	160.82184743633	Nominal RA [deg]
dec_nom	-59.159262100751	Nominal Dec [deg]
roll_nom	212.199891976	Nominal Roll [deg]
revision	2	Processing version of data
ontime	20169.599924922	Sum of GTIs [s]
livetime	19914.200305998	Livetime [s]
ontime0	20169.599924922	Sum of GTIs [s]
ontime1	20153.395013571	Sum of GTIs [s]
ontime2	20169.599924922	Sum of GTIs [s]
ontime3	20169.599924922	Sum of GTIs [s]
ontime6	20169.599924922	Sum of GTIs [s]
ontime7	20169.599924922	Sum of GTIs [s]
l2events	147325	Number of level 2 events

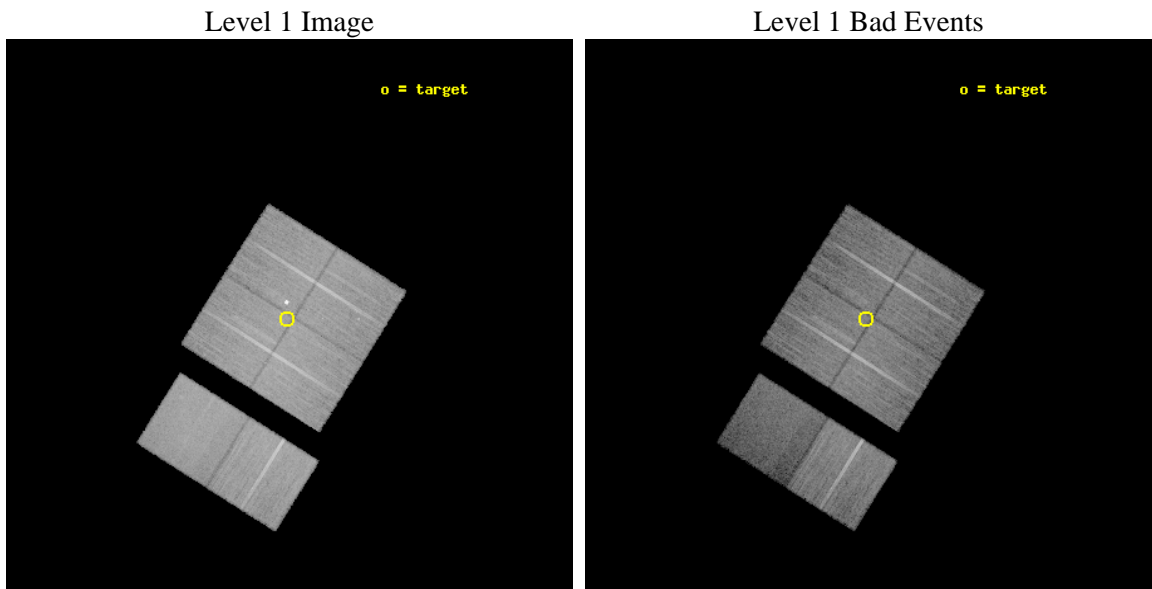




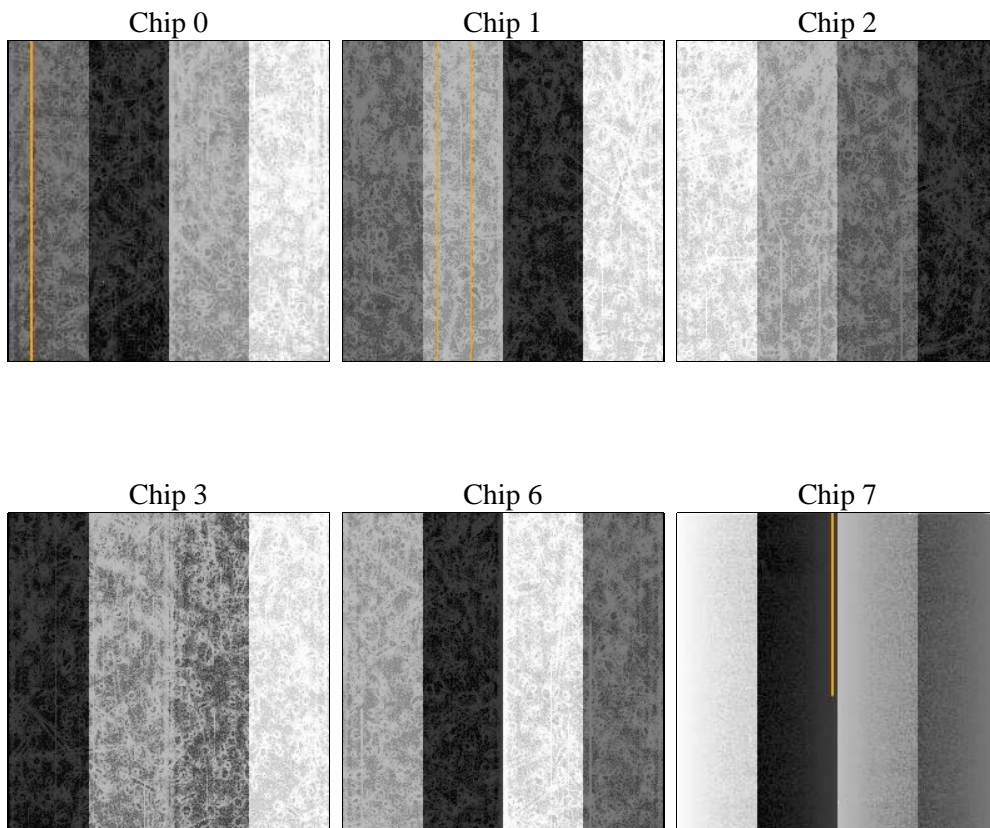
## 2 OBI

### 2.1 OBI

#### 2.1.1 Images



#### 2.1.2 Bias



### 2.1.3 Parameters

obi_num	0	Obi number	sched_exp_time	20000.305000	[s] Scheduled observation exposure time
ascdsver	8.4.4	Processing system revision	ontime	20169.599924922	Sum of GTIs [s]
caldsver	4.4.9	&#160	ontime0	20169.599924922	Sum of GTIs [s]
date	2012-05-18T15:23:34	Date and time of file creation	ontime1	20153.395013571	Sum of GTIs [s]
revision	2	Processing version of data	ontime2	20169.599924922	Sum of GTIs [s]
			ontime3	20169.599924922	Sum of GTIs [s]
			ontime6	20169.599924922	Sum of GTIs [s]
			ontime7	20169.599924922	Sum of GTIs [s]
			l1events	921781	Number of level 1 events

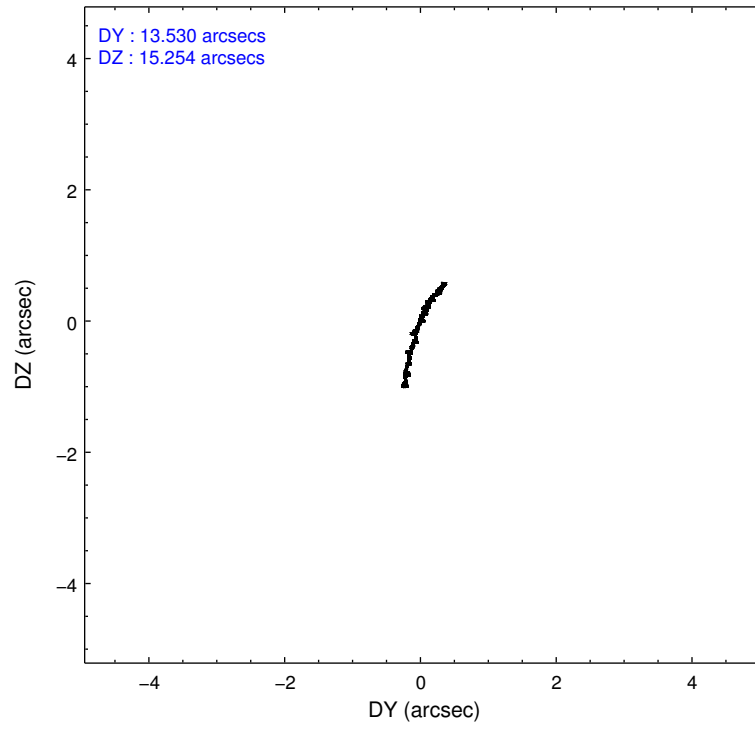
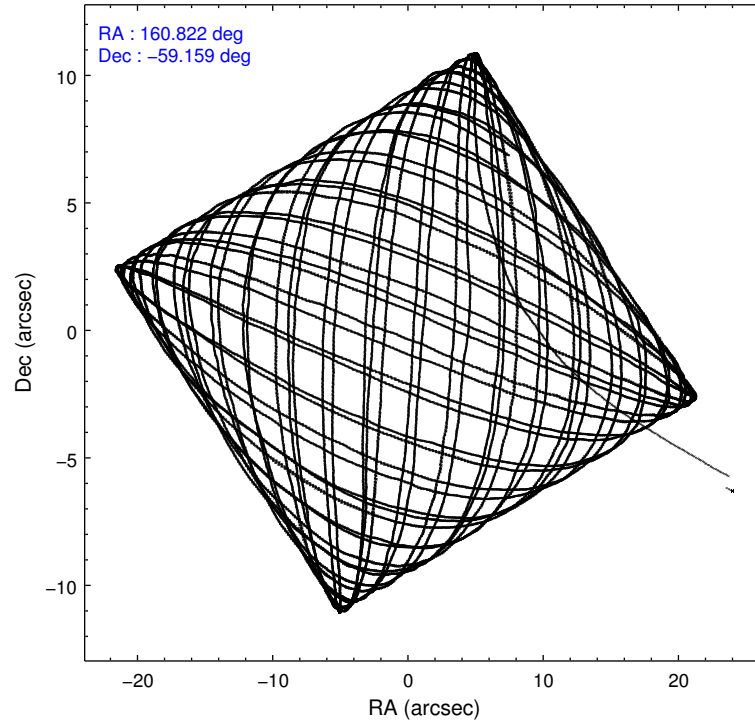
### 2.1.4 Events

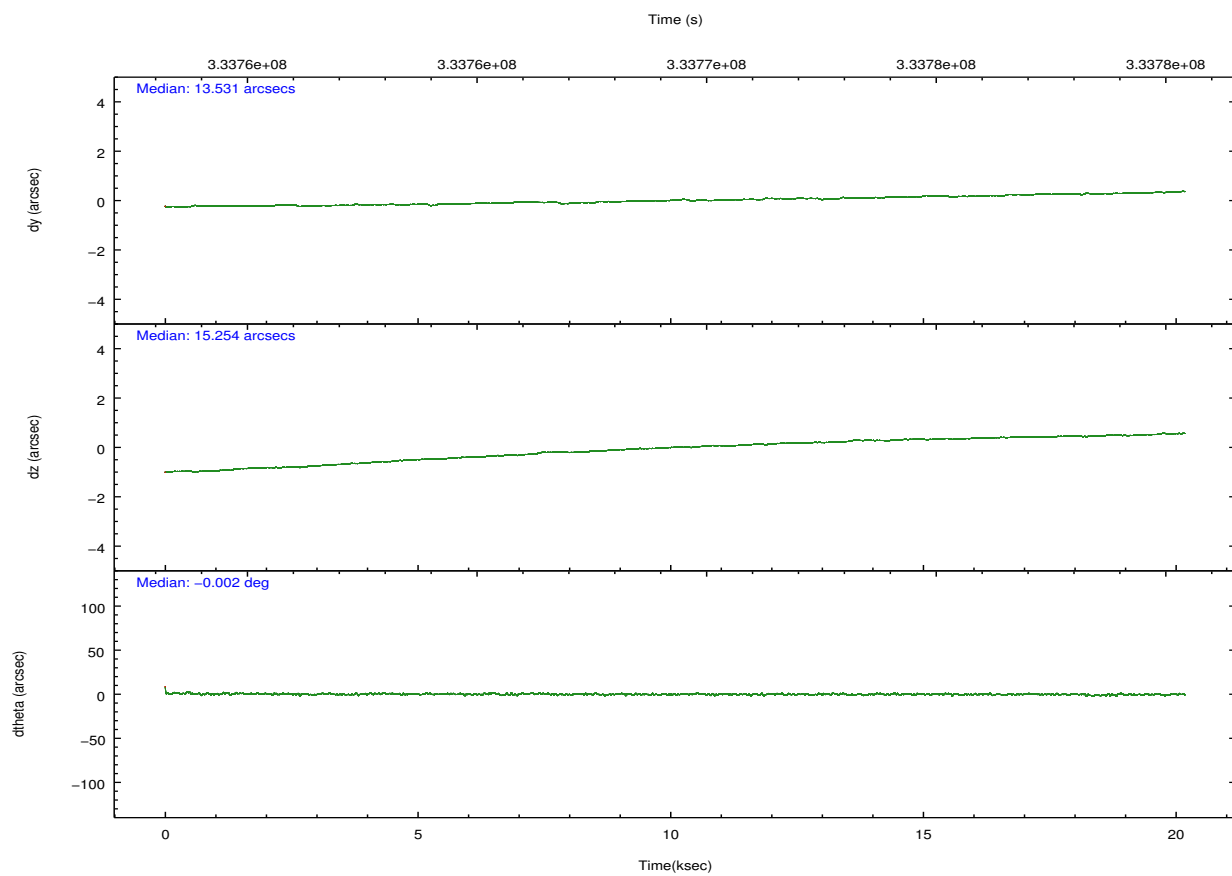
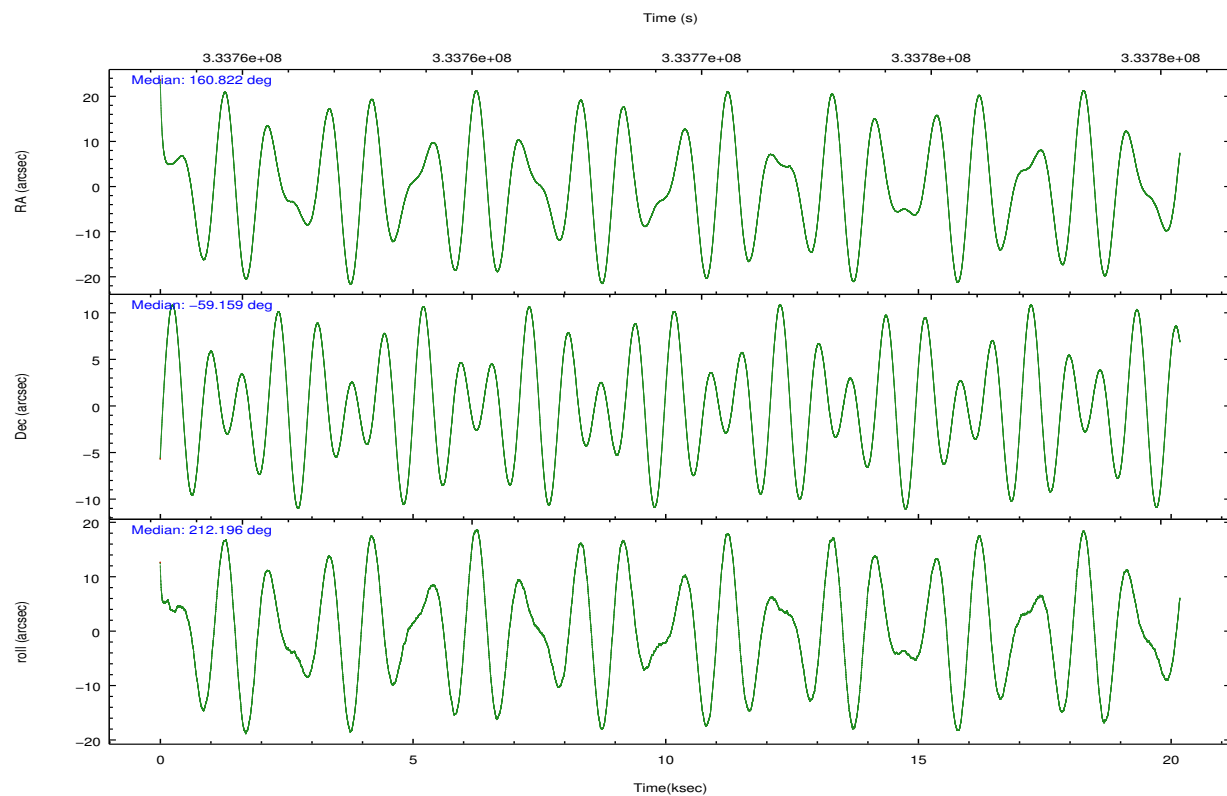
	ccd 0	ccd 1	ccd 2	ccd 3	ccd 6	ccd 7		ccd 0	ccd 1	ccd 2	ccd 3	ccd 6	ccd 7
level 1 events	143291	144833	165650	152184	161713	154110	grade 0 events	7285	12471	6734	6479	7866	9348
rejected events	126305	121998	149445	136543	143163	75057		5%	8%	4%	4%	4%	6%
rejected %	88%	84%	90%	89%	88%	48%	grade 1 events	72	111	91	99	100	229
								0%	0%	0%	0%	0%	0%
							grade 2 events	3803	3631	3716	3233	3856	16929
								2%	2%	2%	2%	2%	10%
							grade 3 events	1693	1874	1554	1602	1751	7581
								1%	1%	0%	1%	1%	4%
							grade 4 events	1565	1753	1602	1631	1782	7519
								1%	1%	0%	1%	1%	4%
							grade 5 events	4589	5087	4060	5367	5363	16152
								3%	3%	2%	3%	3%	10%
							grade 6 events	2712	3182	2645	2743	3343	37934
								1%	2%	1%	1%	2%	24%
							grade 7 events	121572	116724	145248	131030	137652	58418
								84%	80%	87%	86%	85%	37%

## 2.2 Compared Parameters

Parameter	Planned	Actual	Parameter	Planned	Actual
Instrument	ACIS	ACIS	Obspar format version number	7	7
Detector	ACIS-012367	ACIS-012367	Obspar file type	PREDICTED	ACTUAL
Grating	NONE	NONE	Obspar update status	NONE	UPDATED
Data mode	VFAINT	VFAINT	CCD I0 on	Y	Y
Observation mode	POINTING	POINTING	CCD I1 on	Y	Y
[deg] Pointing RA	160.846656	160.8218474363315	CCD I2 on	Y	Y
[deg] Pointing Dec	-59.134898	-59.15926210075109	CCD I3 on	Y	Y
[deg] Pointing Roll	212.012505	212.1998919759986	CCD S0 on	N	N
[mm] SIM focus pos	-0.782348	-0.7809083437167272	CCD S1 on	N	N
[mm] SIM defocus	0	0.001439871863259334	CCD S2 on	O1	Y
[mm] SIM translation stage pos	-233.592463	-233.5874344608287	CCD S3 on	O2	Y
[mm] SIM translation stage offset	0	-0.005018542100998502	CCD S4 on	N	N
[s] Observation start time (MET)	333759406.184000	333758308.57803	CCD S5 on	N	N
Observation start date	2008-07-29T22:55:41	2008-07-29T22:38:28	Number of optional ACIS chips dropped	0	0
[s] Observation end time (MET)	333779407.184000	333779637.29157	On-chip summing requested	N	N
Observation end date	2008-07-30T04:29:02	2008-07-30T04:33:57	Subarray requested	NONE	NONE
Read mode	TIMED	TIMED	Alternating exposures requested	N	N
			[s] Primary exposure time	0.000000	3.2

## 2.3 Aspect



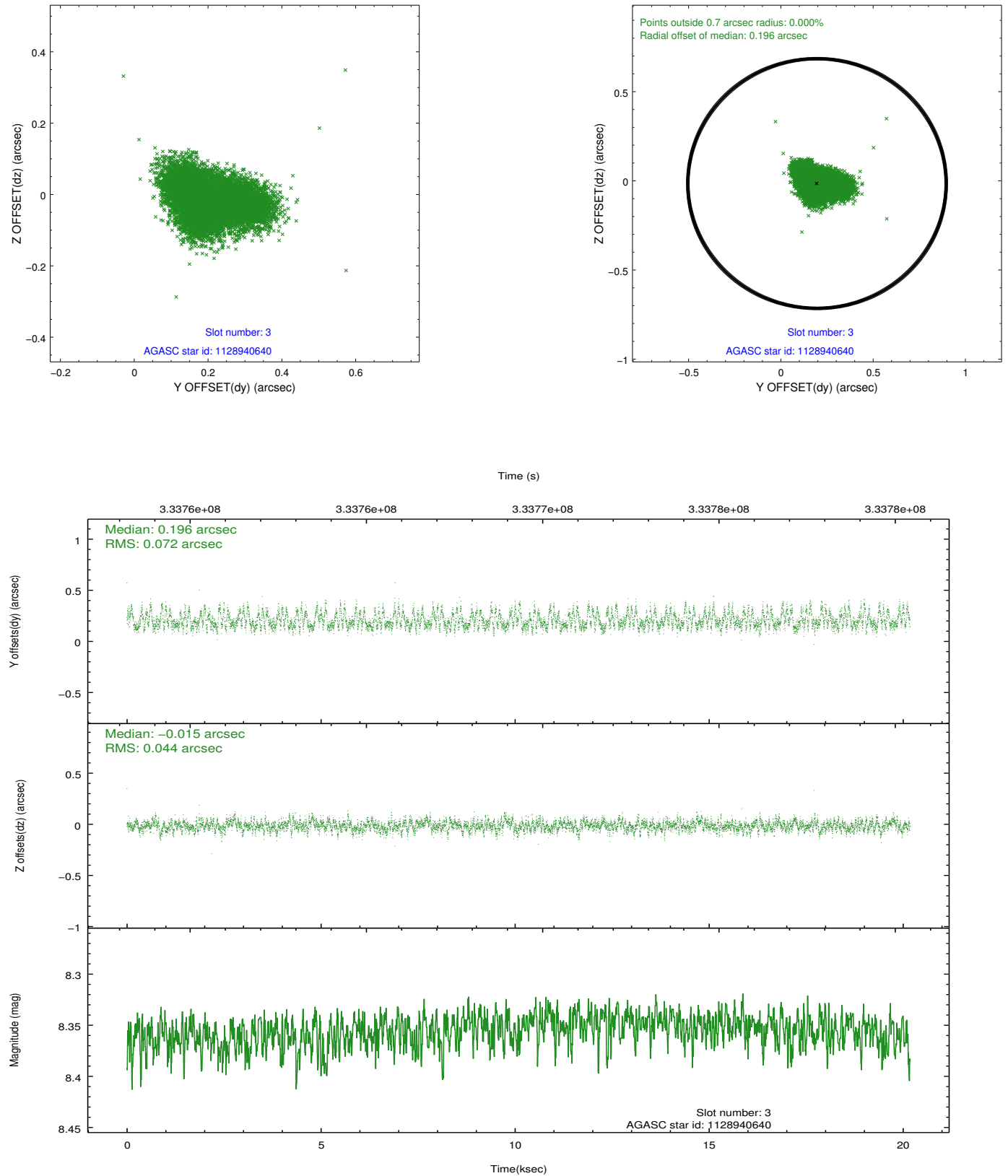


### Slot Statistics

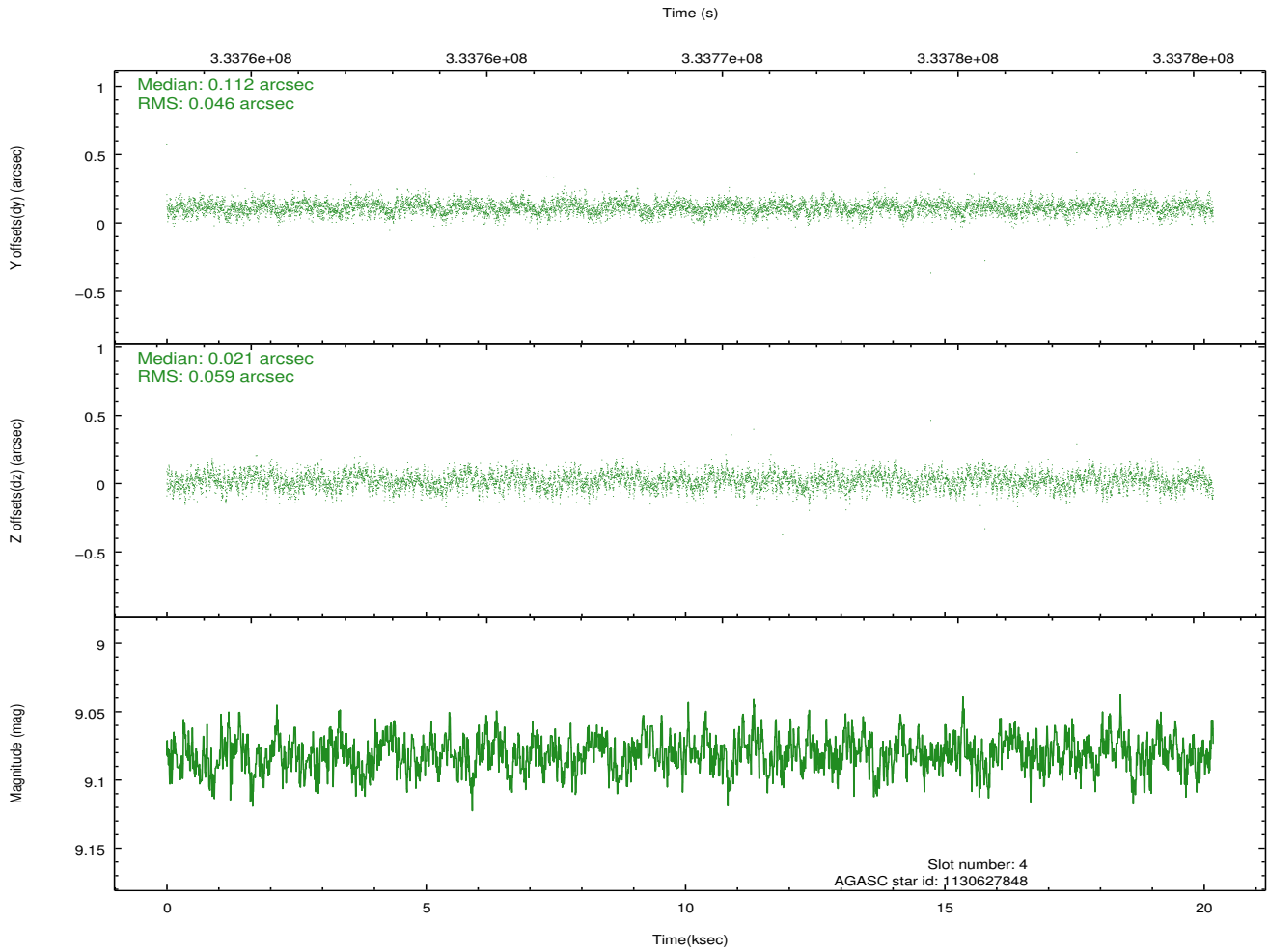
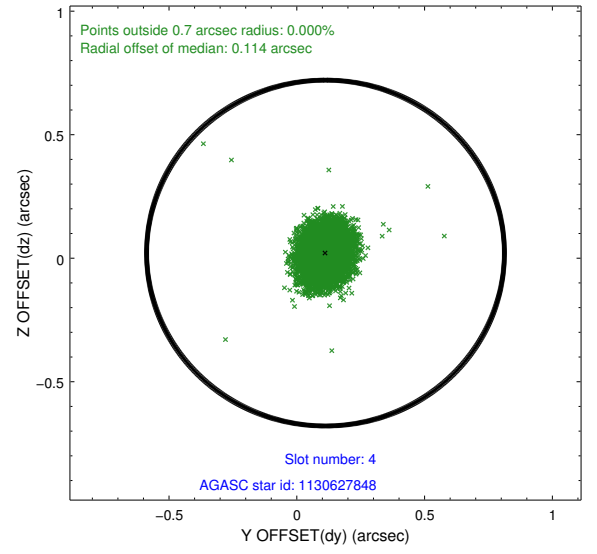
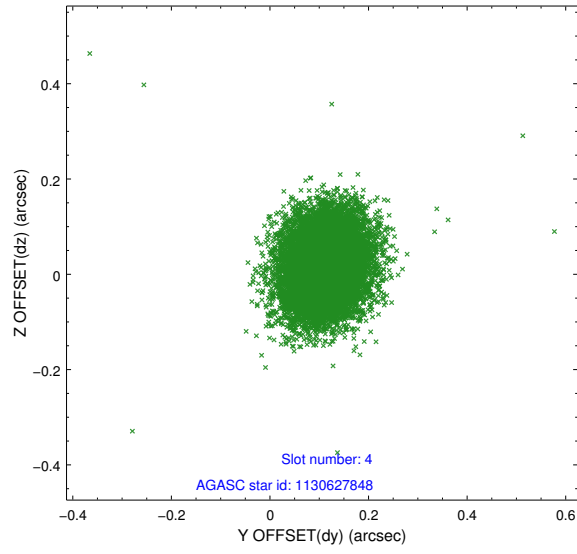
slot	status	id	mag	n_pts	med_dy	med_dz	dr1	dr2	ra	dec	mean_y	mean_z
0	FID	ACIS-I-2	6.98	4922	-0.074	-0.058	0.014	0.023	0.000000	0.000000	-768.29	-845.18
1	FID	ACIS-I-4	6.98	4921	0.171	0.062	0.010	0.022	0.000000	0.000000	2145.93	1061.03
2	FID	ACIS-I-5	7.04	4922	-0.198	0.064	0.013	0.020	0.000000	0.000000	-1822.01	1059.07
3	GUIDE	1128940640	8.35	9843	0.196	-0.015	0.089	0.148	159.517239	-59.074495	1983.79	-1467.12
4	GUIDE	1130627848	9.08	9832	0.112	0.021	0.079	0.128	160.935287	-58.470864	-1407.93	-1938.56
5	GUIDE	1130632200	7.55	9771	-0.083	-0.010	0.063	0.103	161.433843	-59.407820	-388.93	1407.36
6	GUIDE	1130643264	6.64	9844	-0.039	-0.059	0.076	0.120	160.322990	-59.676912	1843.55	1153.56
7	GUIDE	1130629840	8.20	9838	-0.195	0.067	0.065	0.110	161.087793	-58.400936	-1785.55	-1998.48

## 2.4 Star Slots

### 2.4.1 Slot 3

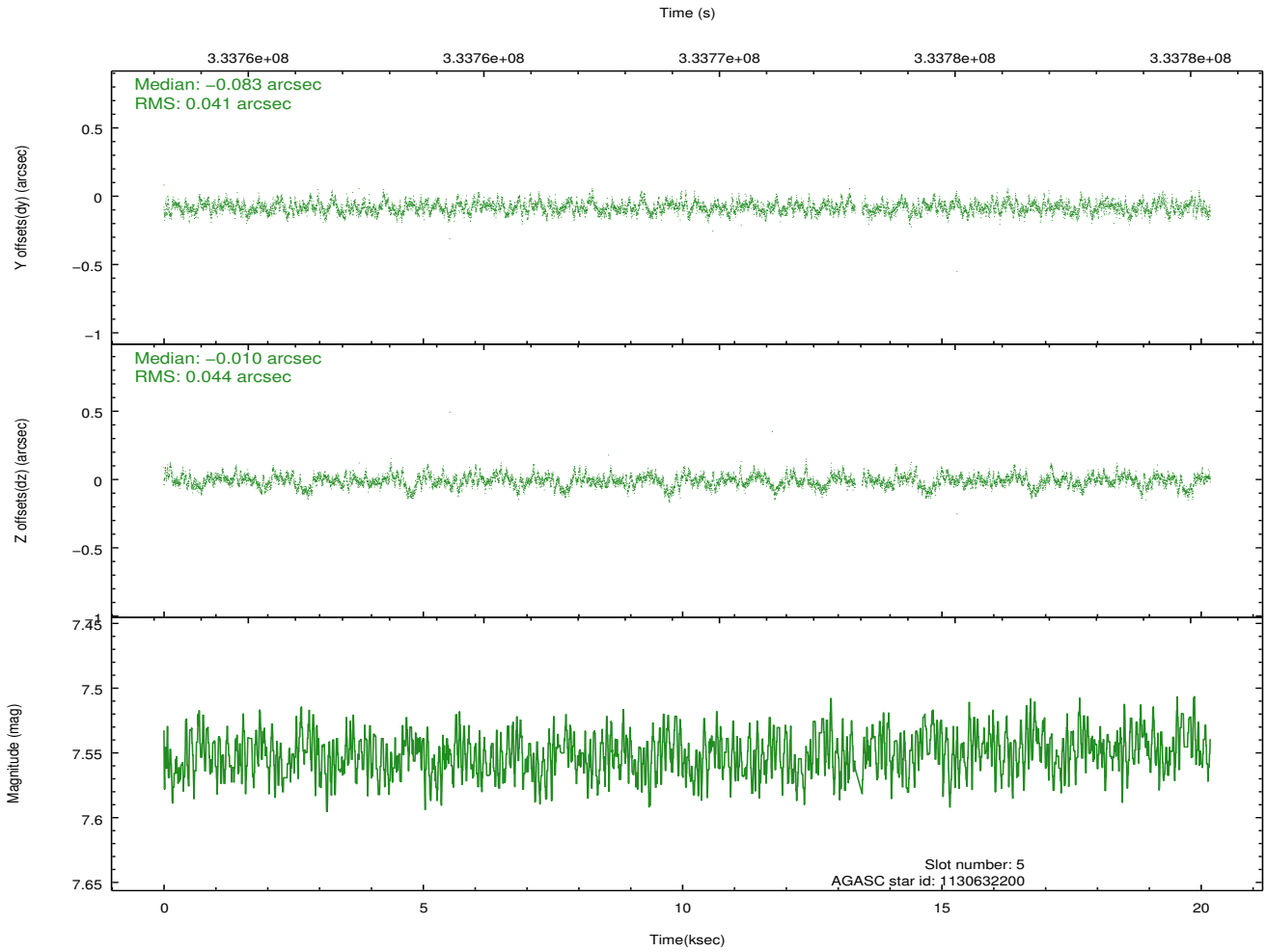
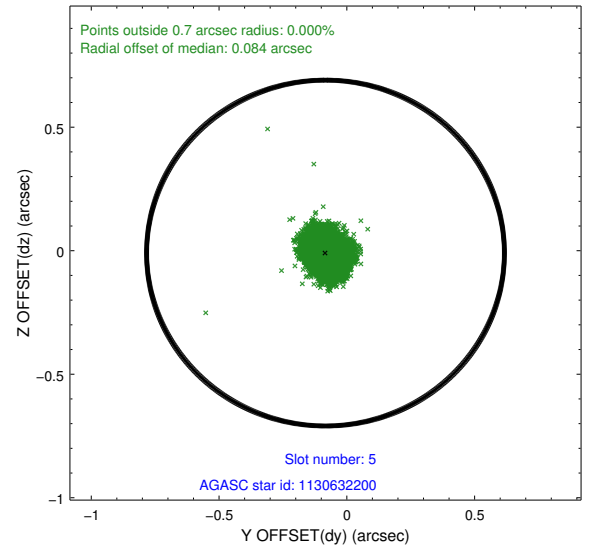
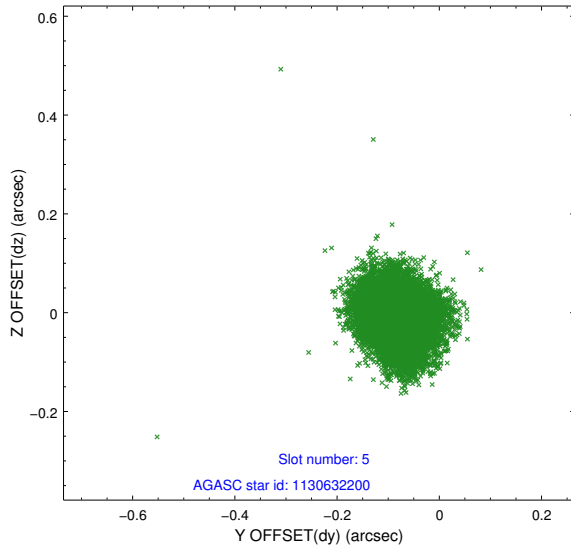


## 2.4.2 Slot 4

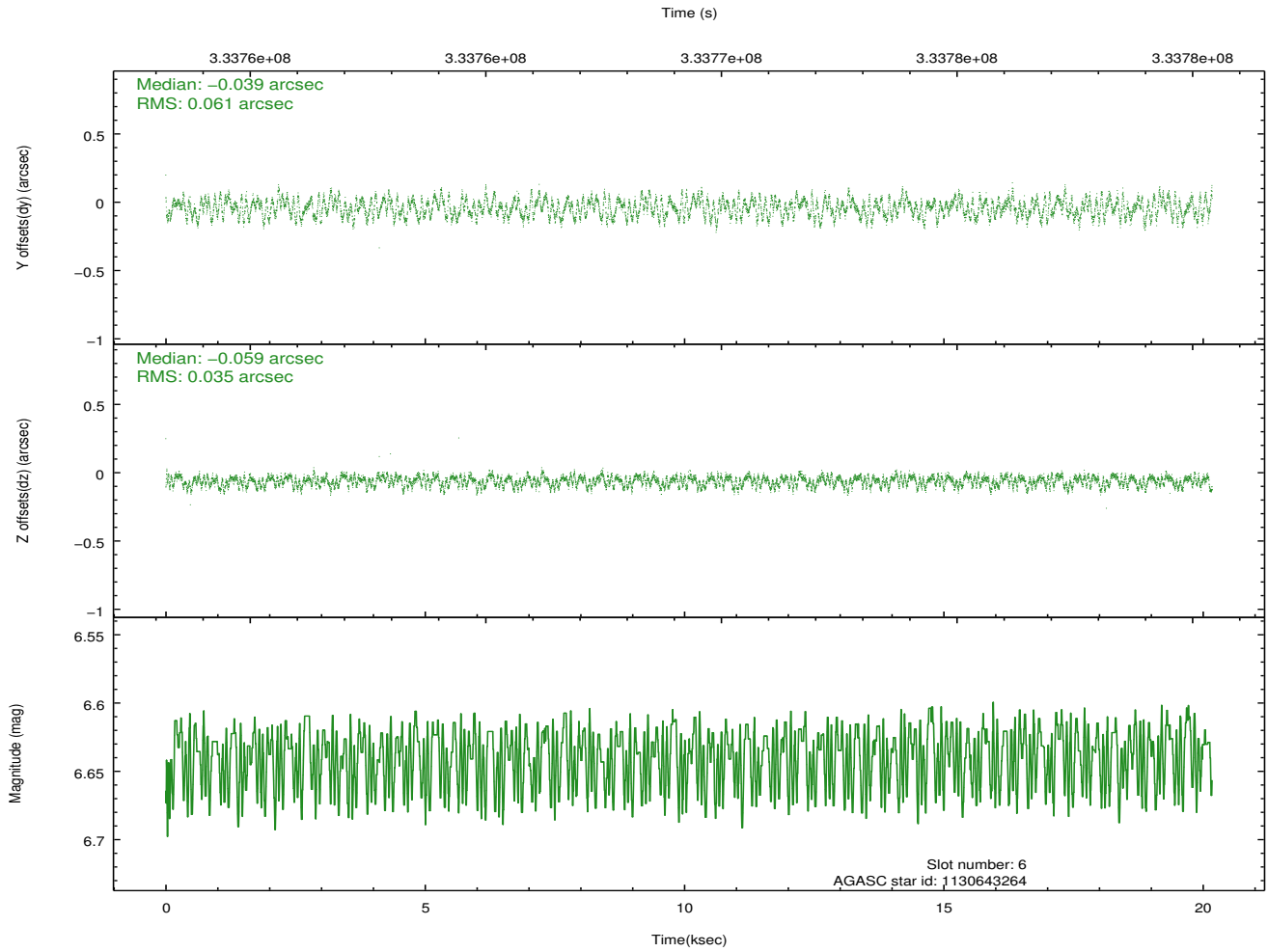
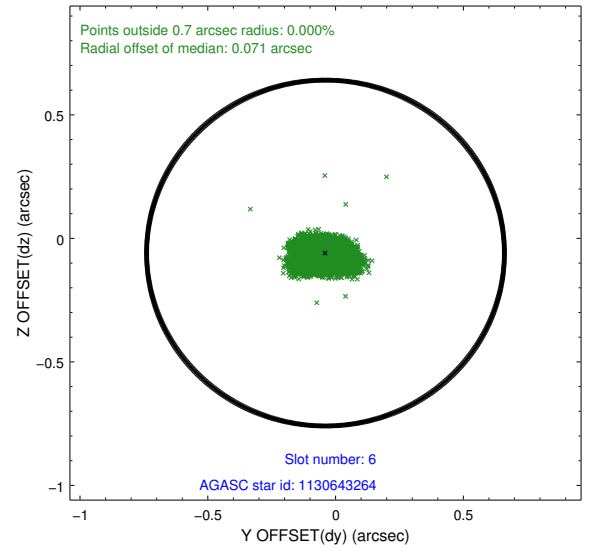
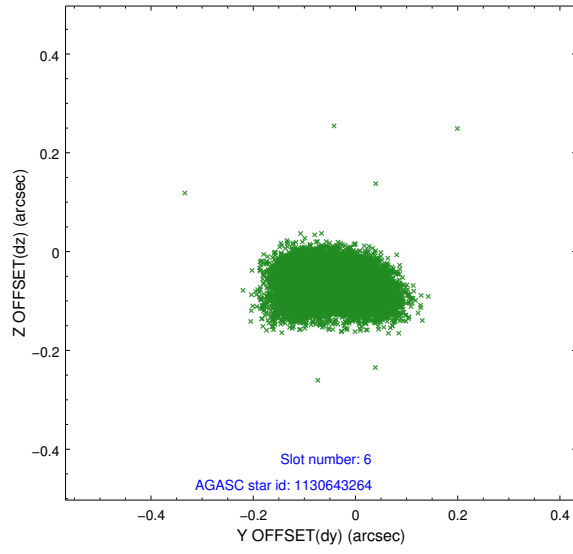




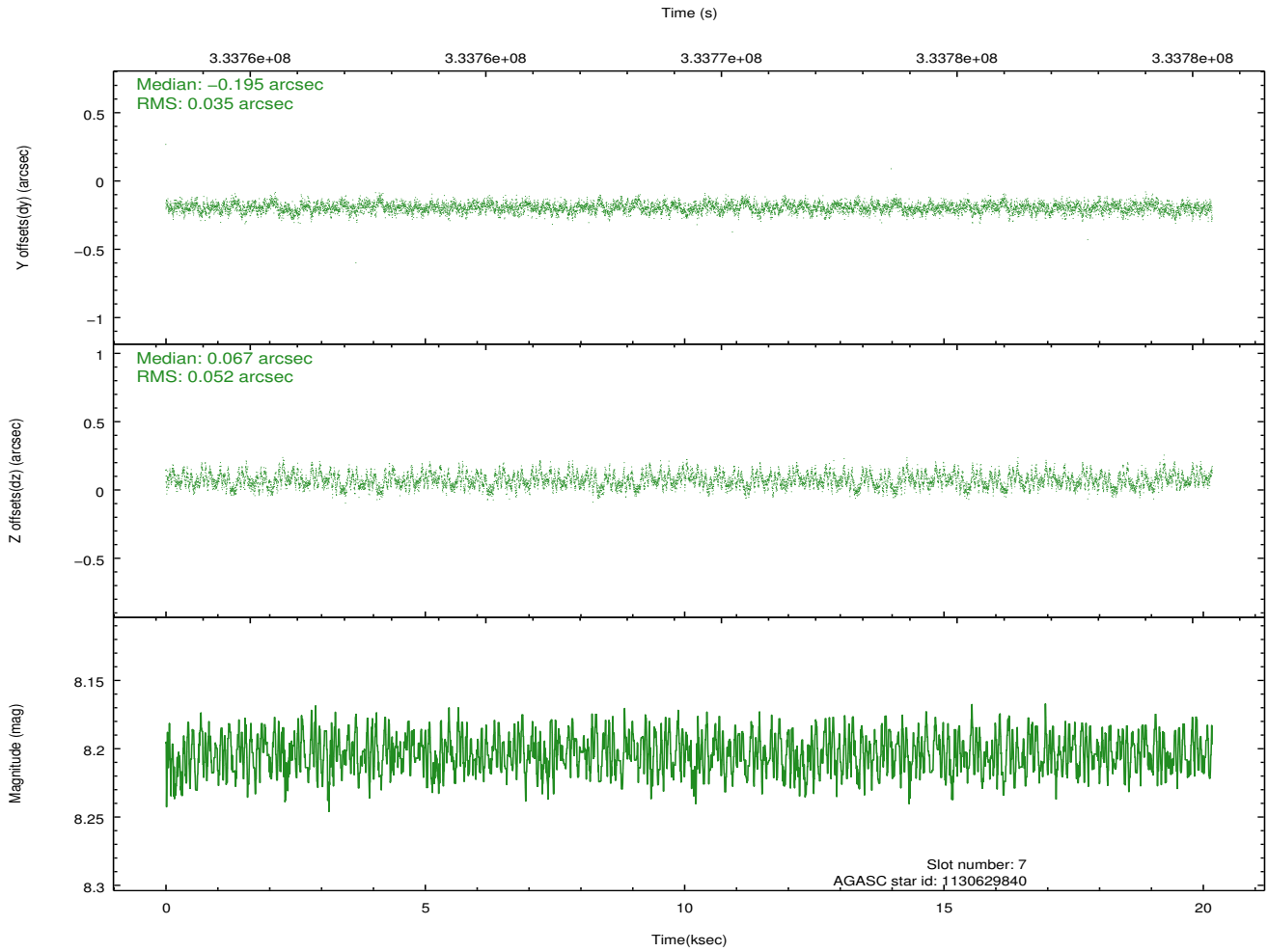
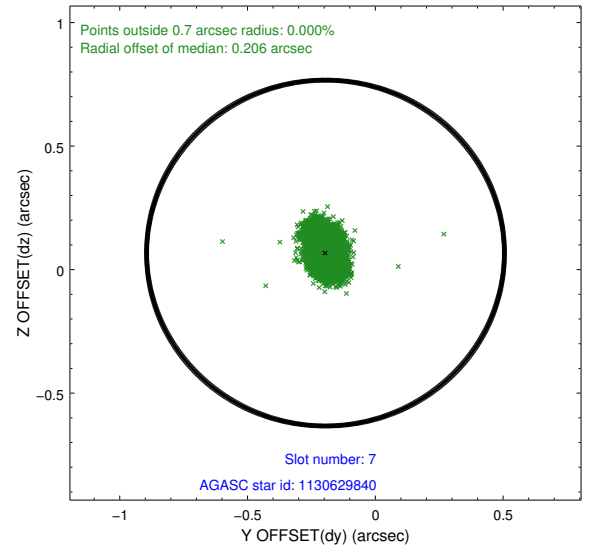
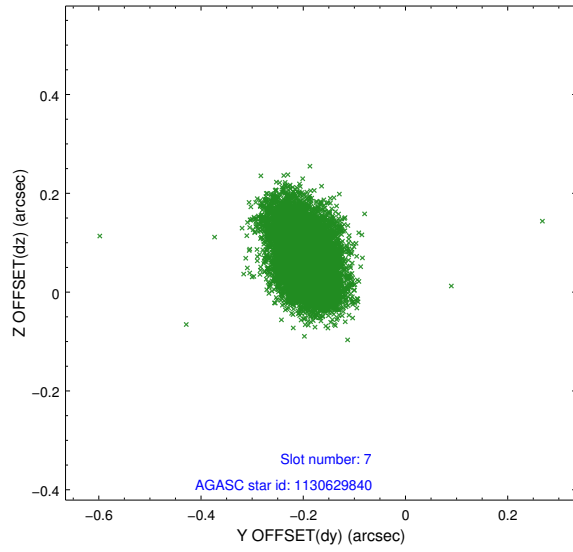
### 2.4.3 Slot 5



## 2.4.4 Slot 6

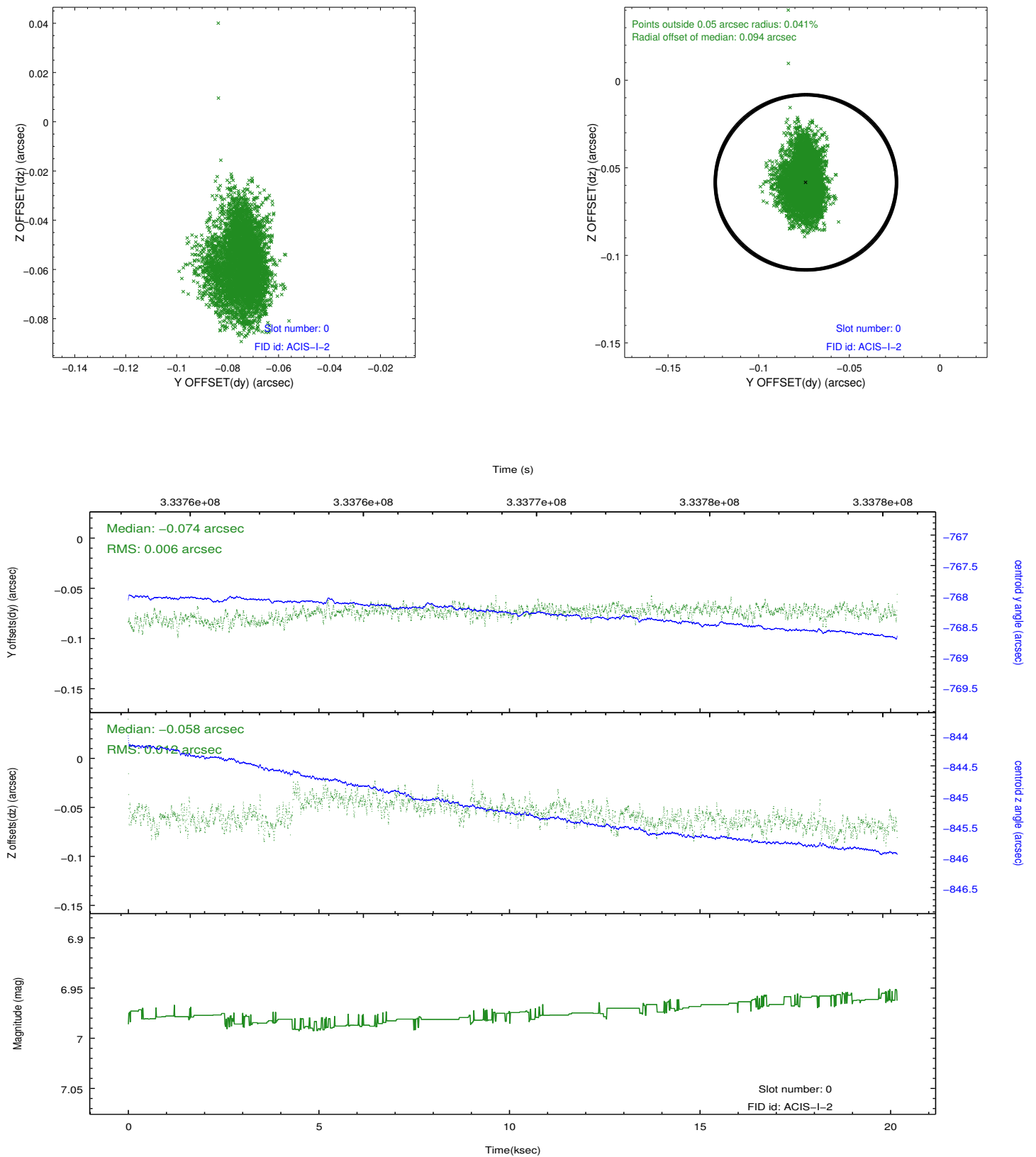


## 2.4.5 Slot 7

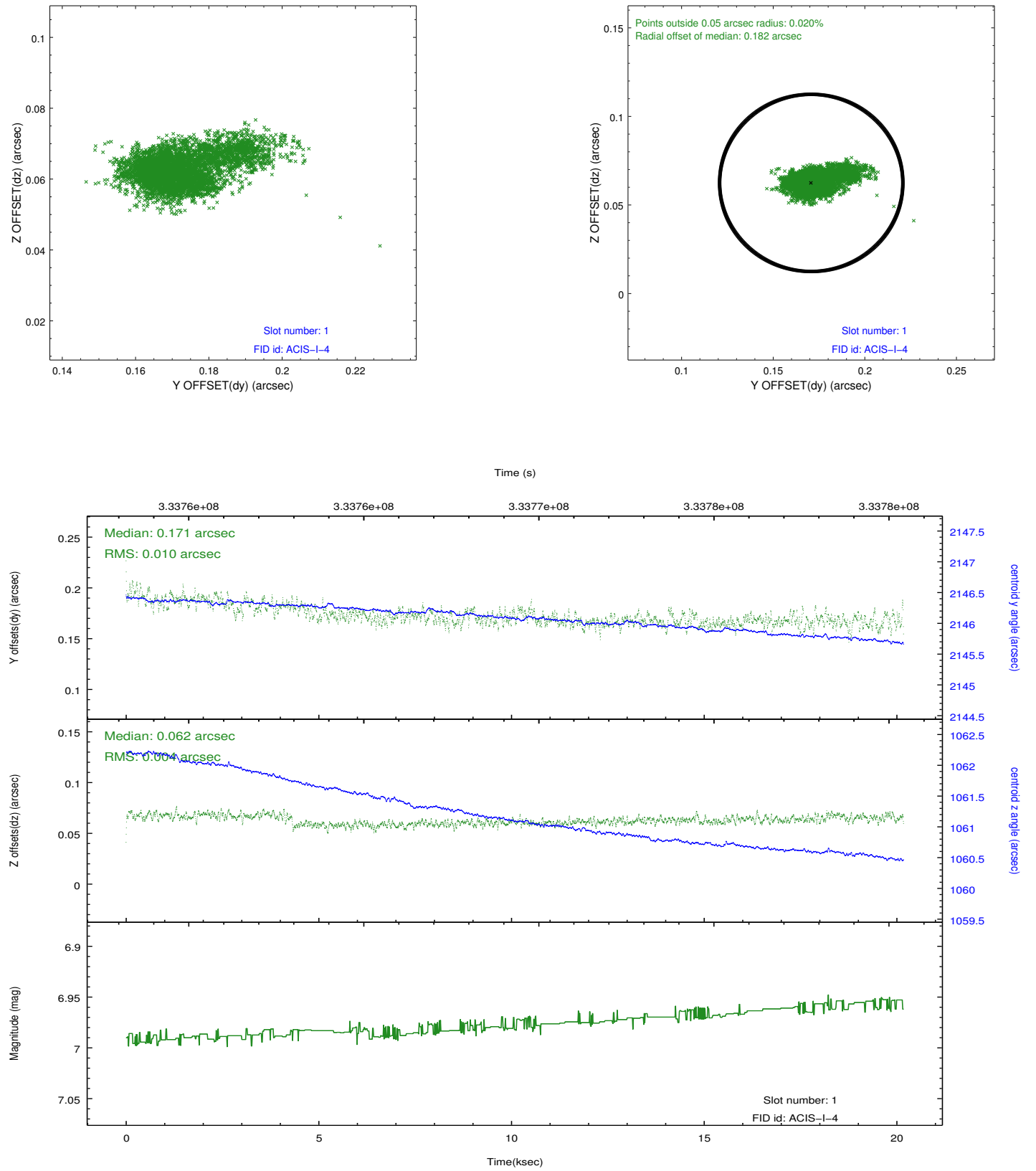


## 2.5 FID Slots

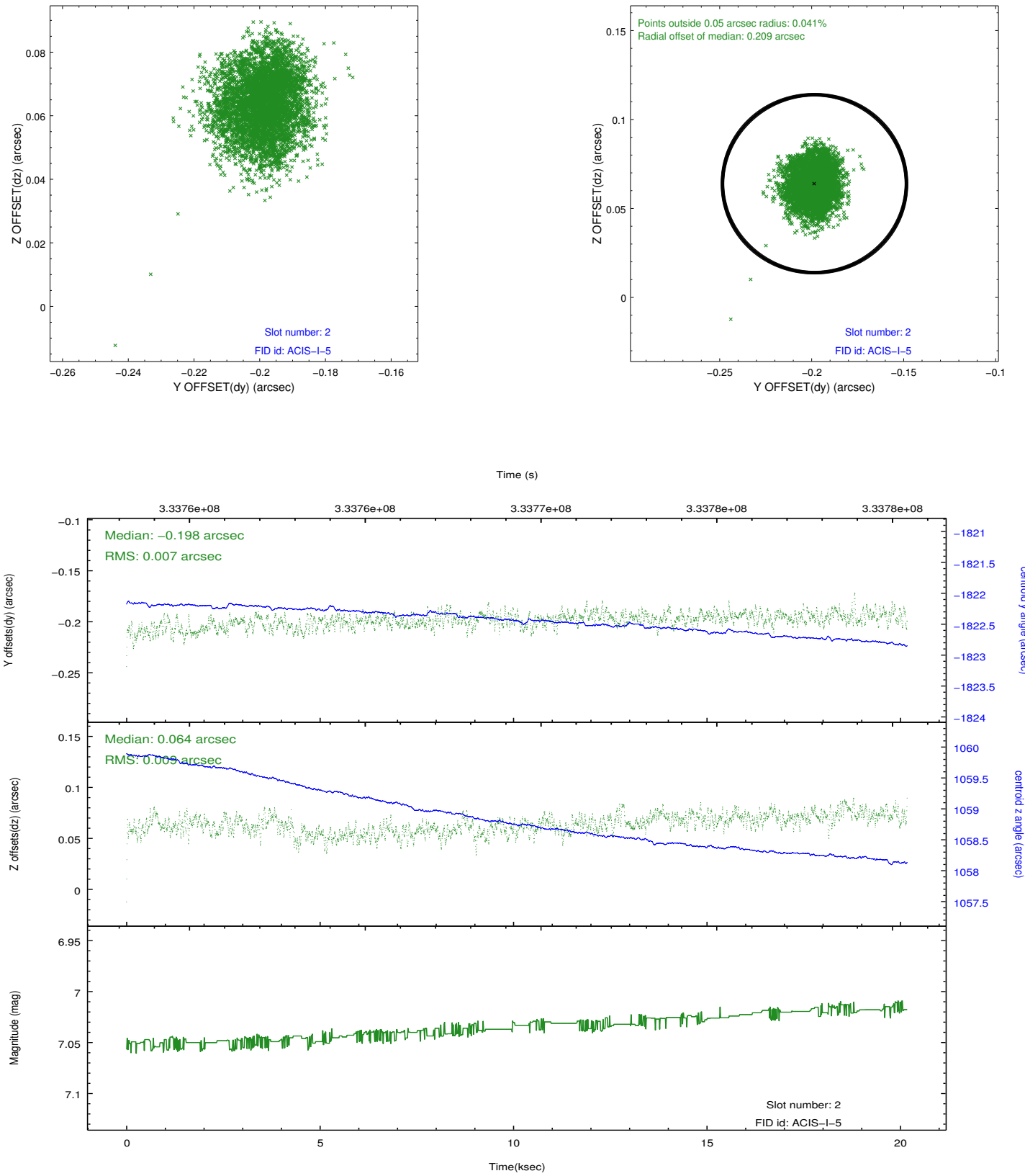
### 2.5.1 Slot 0



## 2.5.2 Slot 1



### 2.5.3 Slot 2



## A Summary

### A.1 Status

V&V Scientist	Beth Sundheim
V&V Date (YYYY-MM-DD)	2012.05.25
V&V Edition	1
V&V Disposition and Status	OK
V&V Charge Time	20.1695999

### A.2 Comments