

# V&V Reference Report

## L2 ASCDS Version : 8.4.4

Observation 9878 - L2 Version 2  
Chandra X-Ray Center

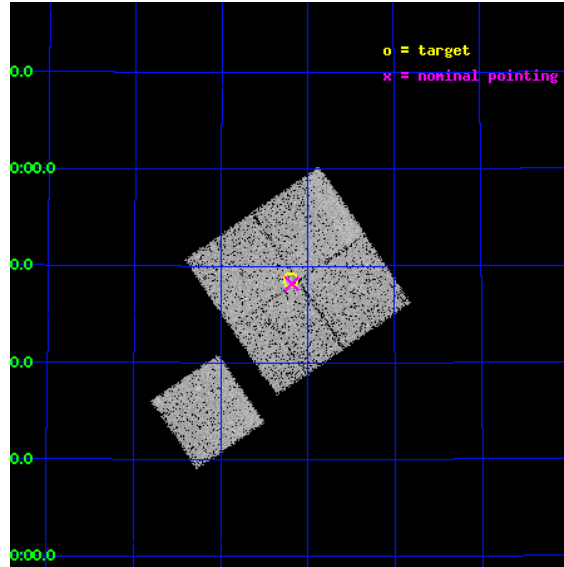
L2 Processing Date : May 17 2012

## Contents

<b>1</b>	<b>Front</b>	<b>2</b>
<b>2</b>	<b>OBI</b>	<b>3</b>
2.1	OBI . . . . .	3
2.1.1	Images . . . . .	3
2.1.2	Bias . . . . .	3
2.1.3	Parameters . . . . .	4
2.1.4	Events . . . . .	4
2.2	Compared Parameters . . . . .	5
2.3	Aspect . . . . .	6
2.4	Star Slots . . . . .	9
2.4.1	Slot 3 . . . . .	9
2.4.2	Slot 4 . . . . .	10
2.4.3	Slot 5 . . . . .	11
2.4.4	Slot 6 . . . . .	12
2.4.5	Slot 7 . . . . .	13
2.5	FID Slots . . . . .	14
2.5.1	Slot 0 . . . . .	14
2.5.2	Slot 1 . . . . .	15
2.5.3	Slot 2 . . . . .	16
<b>A</b>	<b>Summary</b>	<b>17</b>
A.1	Status . . . . .	17
A.2	Comments . . . . .	17

# 1 Front

seq_num	900797	Sequence number
obs_id	9878	Observation id
title	The Evolution of Faint AGN at High Redshift	Proposal title
observer	Prof Kirpal Nandra	Principal investigator
object	AEGIS-2	Source name
dtcycle	0	&#160
cycle	P	events from which exps? Prim/Second/Both
ra_targ	214.8	Observer's specified target RA [deg]
dec_targ	52.810611	Observer's specified target Dec [deg]
ra_nom	214.79612666855	Nominal RA [deg]
dec_nom	52.802895130119	Nominal Dec [deg]
roll_nom	235.71178347728	Nominal Roll [deg]
revision	2	Processing version of data
ontime	15940.159162223	Sum of GTIs [s]
livetime	15731.889247794	Livetime [s]
ontime0	15943.300122619	Sum of GTIs [s]
ontime1	15940.159132302	Sum of GTIs [s]
ontime2	15940.159132421	Sum of GTIs [s]
ontime3	15940.159162223	Sum of GTIs [s]
ontime6	15943.300122619	Sum of GTIs [s]
l2events	53967	Number of level 2 events

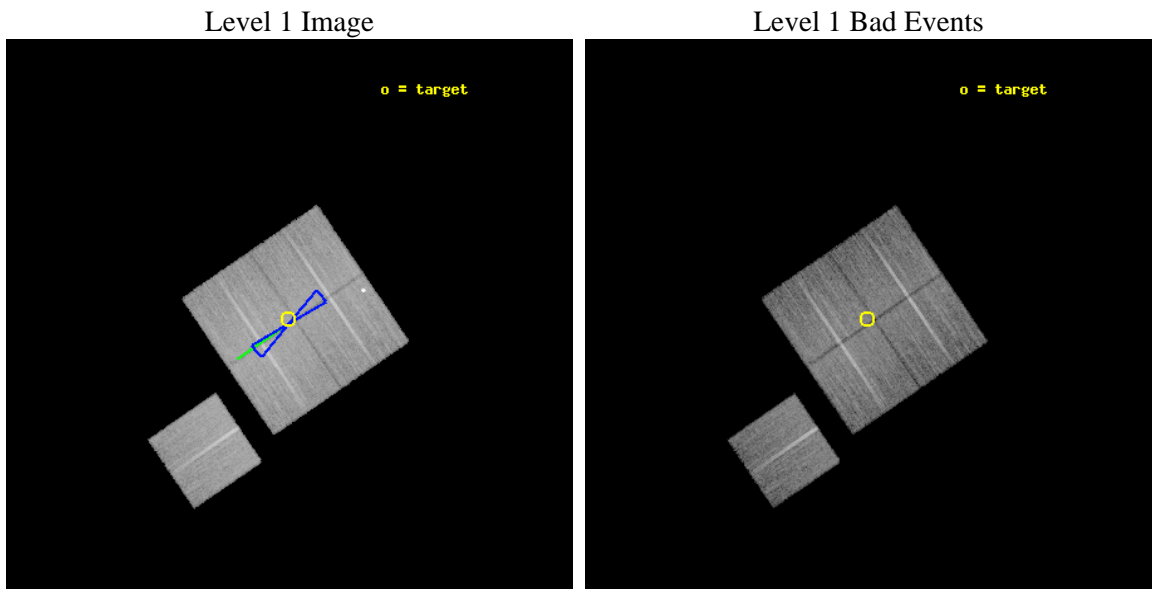




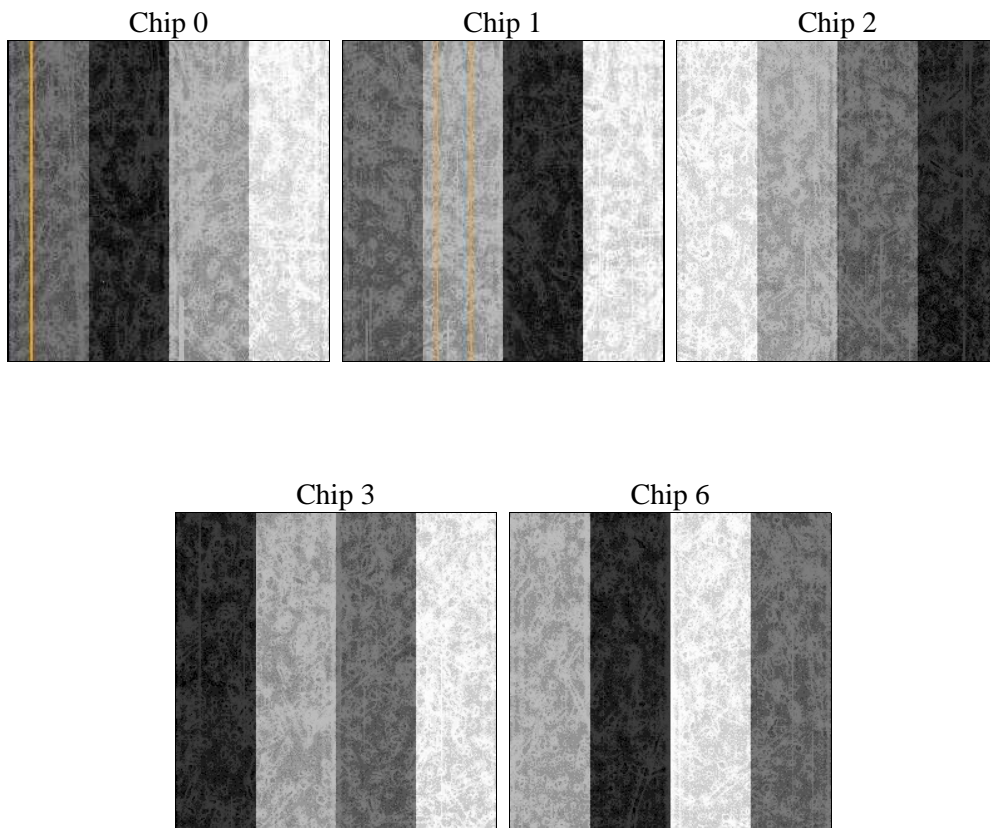
## 2 OBI

### 2.1 OBI

#### 2.1.1 Images



#### 2.1.2 Bias



### 2.1.3 Parameters

obi_num	0	Obi number	sched_exp_time	16167.255000	[s] Scheduled observation exposure time
ascdsver	8.4.4	Processing system revision	ontime	15940.159162223	Sum of GTIs [s]
caldbver	4.4.9	&#160	ontime0	15943.300122619	Sum of GTIs [s]
date	2012-05-17T04:14:50	Date and time of file creation	ontime1	15940.159132302	Sum of GTIs [s]
revision	2	Processing version of data	ontime2	15940.159132421	Sum of GTIs [s]
			ontime3	15940.159162223	Sum of GTIs [s]
			ontime6	15943.300122619	Sum of GTIs [s]
			l1events	620216	Number of level 1 events

### 2.1.4 Events

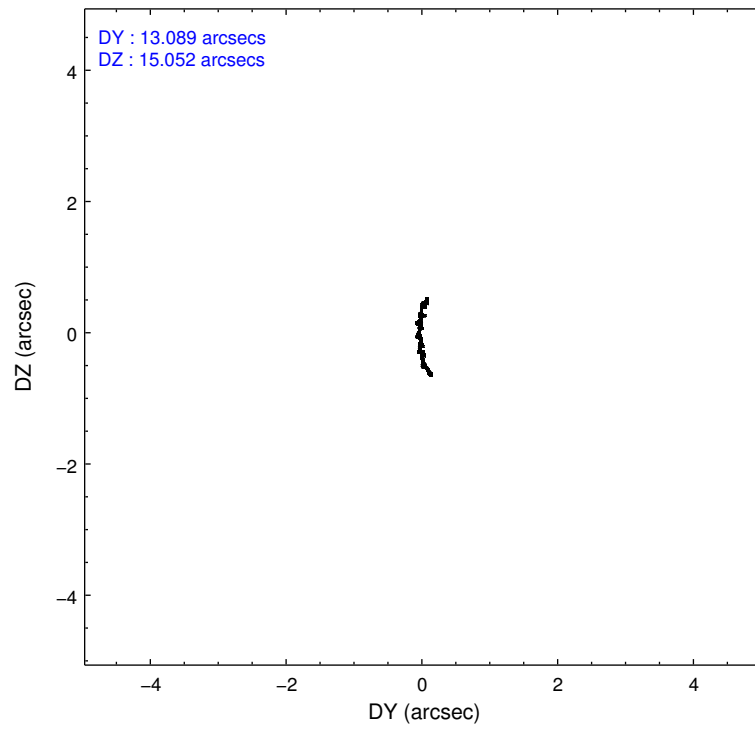
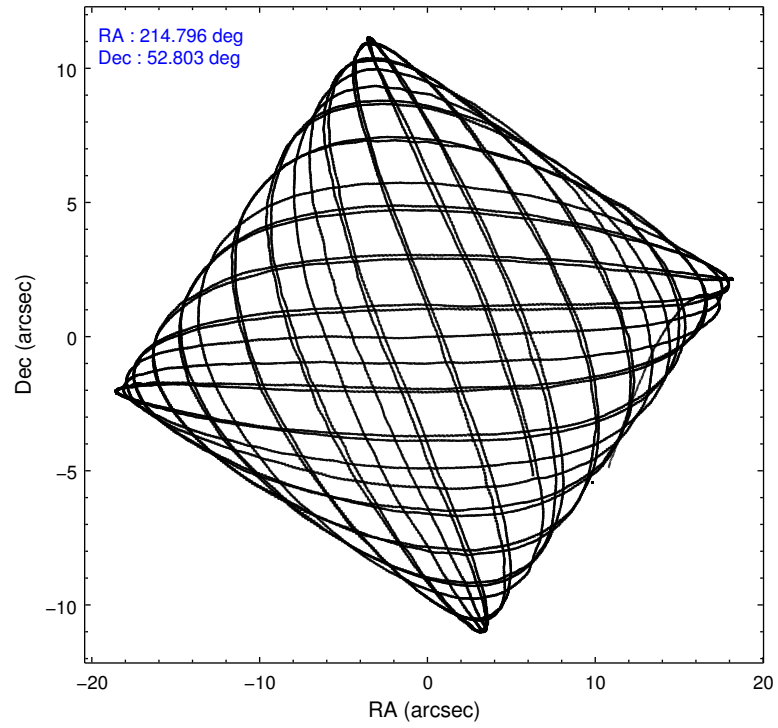
	ccd 0	ccd 1	ccd 2	ccd 3	ccd 6
level 1 events	121964	117084	131914	124919	124335
rejected events	104298	102616	119277	112897	111255
rejected %	85%	87%	90%	90%	89%

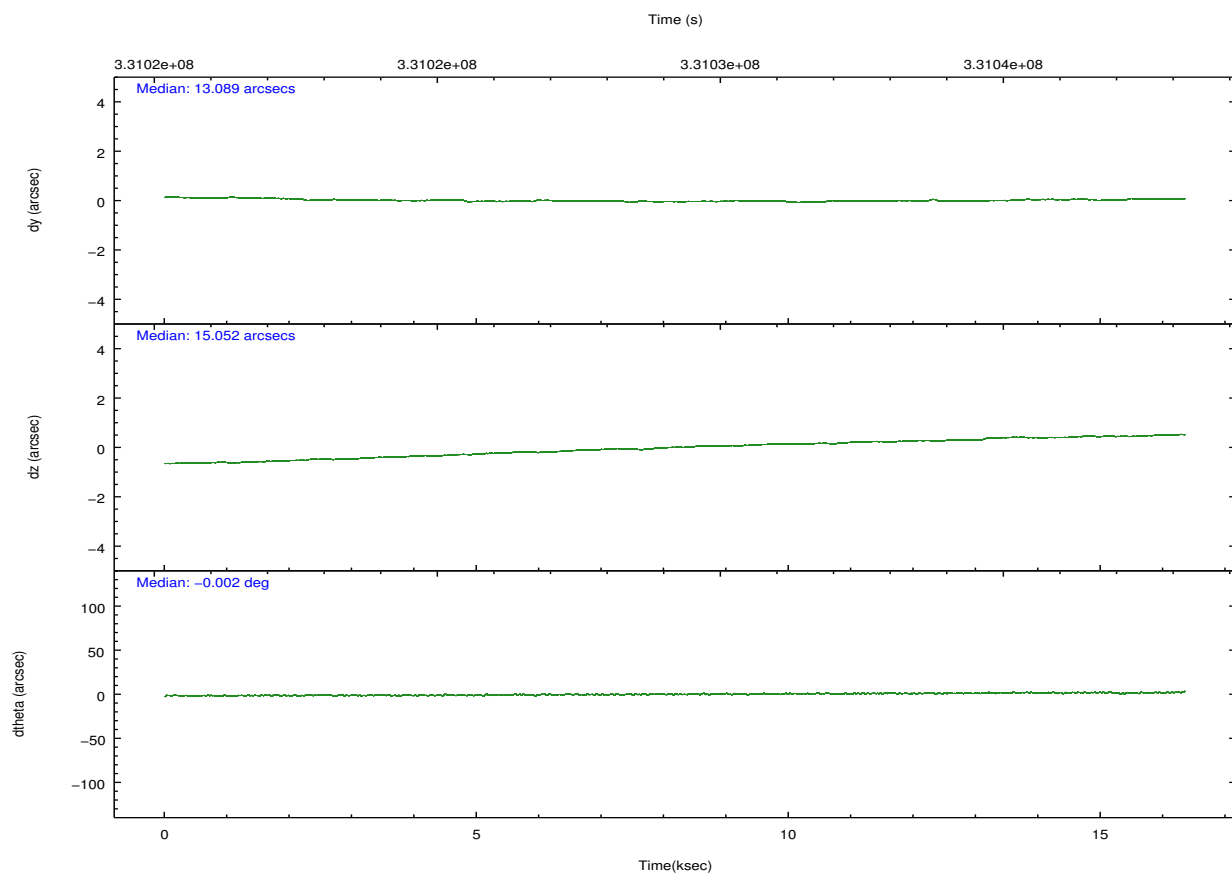
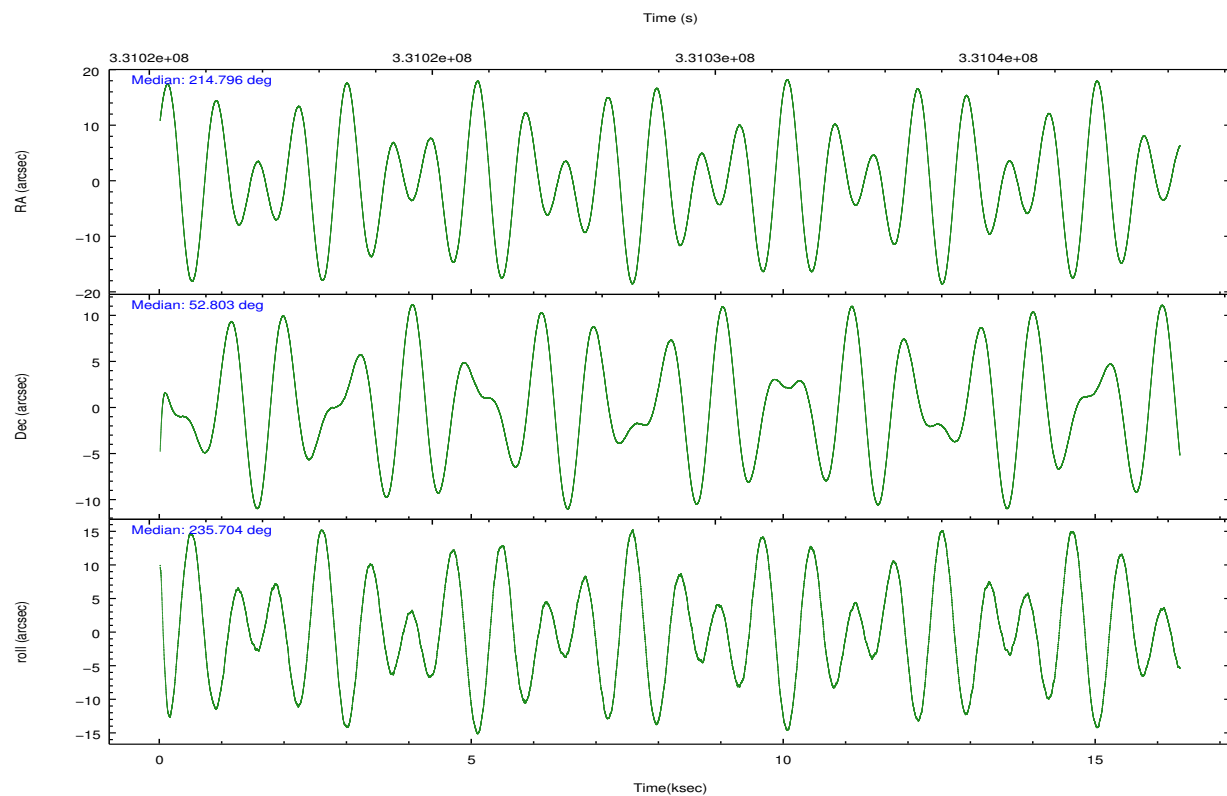
	ccd 0	ccd 1	ccd 2	ccd 3	ccd 6
grade 0 events	9222	5101	4482	4177	4431
	7%	4%	3%	3%	3%
grade 1 events	108	65	75	72	58
	0%	0%	0%	0%	0%
grade 2 events	3151	3325	2979	2729	2859
	2%	2%	2%	2%	2%
grade 3 events	1343	1505	1336	1358	1359
	1%	1%	1%	1%	1%
grade 4 events	1391	1586	1363	1345	1498
	1%	1%	1%	1%	1%
grade 5 events	4499	4984	4242	5236	5114
	3%	4%	3%	4%	4%
grade 6 events	2564	2956	2481	2414	2939
	2%	2%	1%	1%	2%
grade 7 events	99686	97562	114956	107588	106077
	81%	83%	87%	86%	85%

## 2.2 Compared Parameters

Parameter	Planned	Actual	Parameter	Planned	Actual
Instrument	ACIS	ACIS	Obspar format version number	7	7
Detector	ACIS-01236	ACIS-01236	Obspar file type	PREDICTED	ACTUAL
Grating	NONE	NONE	Obspar update status	NONE	UPDATED
Data mode	VFAINT	VFAINT	CCD I0 on	Y	Y
Observation mode	POINTING	POINTING	CCD I1 on	Y	Y
[deg] Pointing RA	214.799319	214.7961266685534	CCD I2 on	Y	Y
[deg] Pointing Dec	52.830302	52.80289513011916	CCD I3 on	Y	Y
[deg] Pointing Roll	235.500545	235.7117834772831	CCD S0 on	N	N
[deg] Roll angle	50.000000	50.000000	CCD S1 on	N	N
[deg] Roll tolerance	10.000000	10.000000	CCD S2 on	O1	Y
Roll constraint allows 180D rotation	Y	Y	CCD S3 on	N	N
[mm] SIM focus pos	-0.782348	-0.7809083437167272	CCD S4 on	N	N
[mm] SIM defocus	0	0.001439871863259334	CCD S5 on	N	N
[mm] SIM translation stage pos	-233.592463	-233.5874344608287	Number of optional ACIS chips dropped	0	0
[mm] SIM translation stage offset	0	-0.005018542100998502	On-chip summing requested	N	N
[s] Observation start time (MET)	331021214.184000	331020200.83147	Subarray requested	NONE	NONE
Observation start date	2008-06-28T06:19:09	2008-06-28T06:03:20	Alternating exposures requested	N	N
[s] Observation end time (MET)	331037381.184000	331037618.14482	[s] Primary exposure time	0.000000	3.1
Observation end date	2008-06-28T10:48:36	2008-06-28T10:53:38			
Read mode	TIMED	TIMED			

## 2.3 Aspect



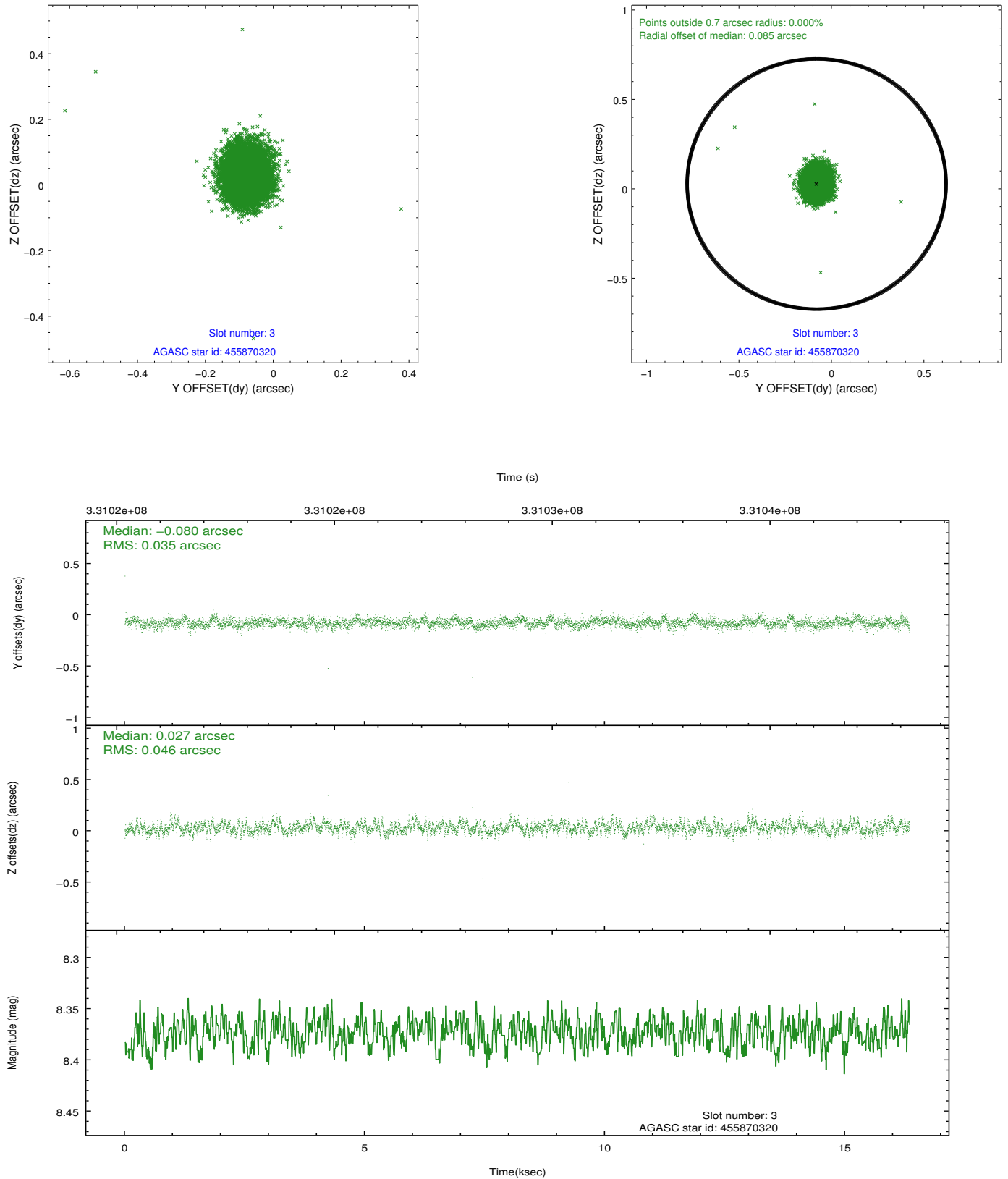


### Slot Statistics

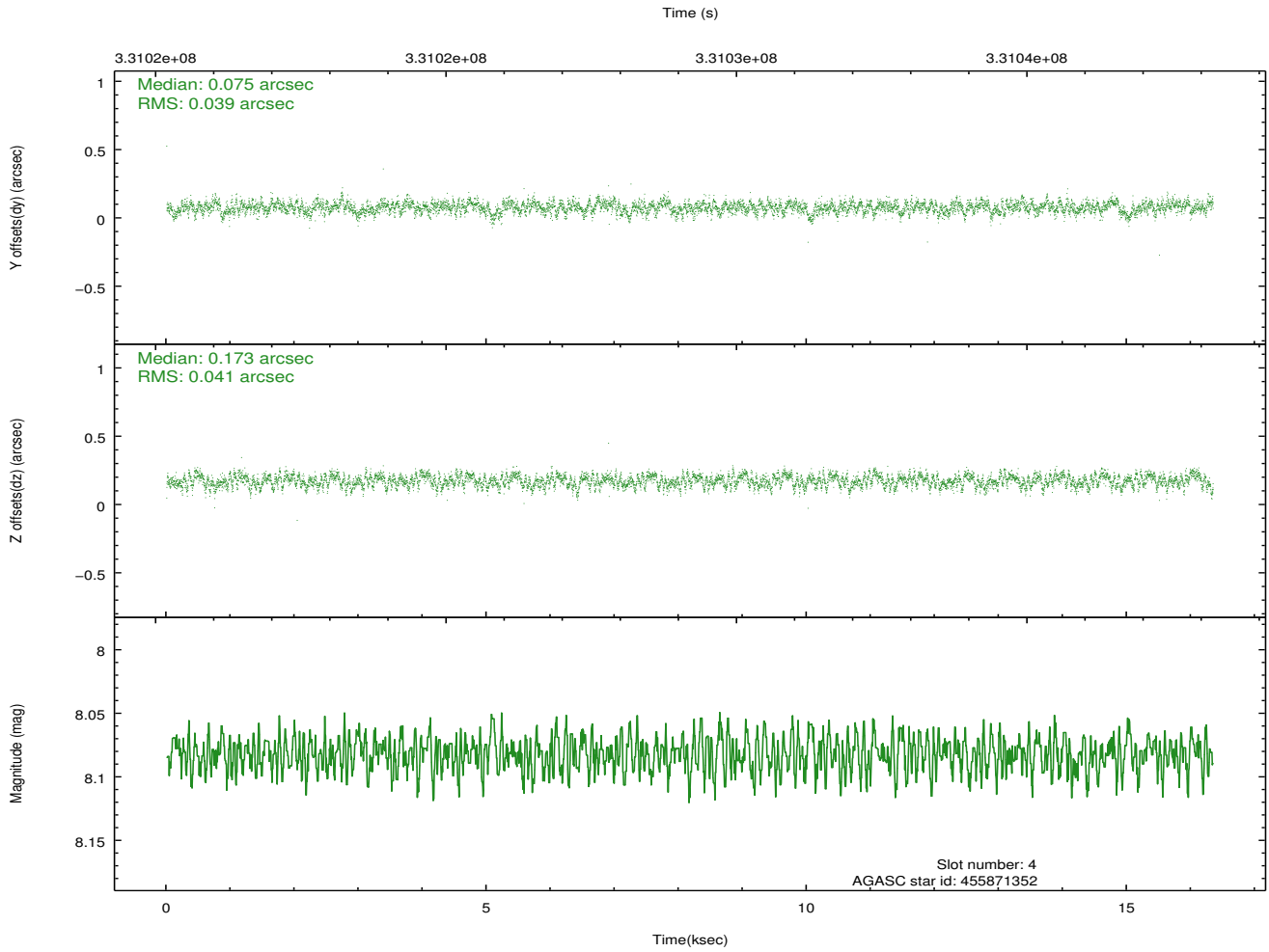
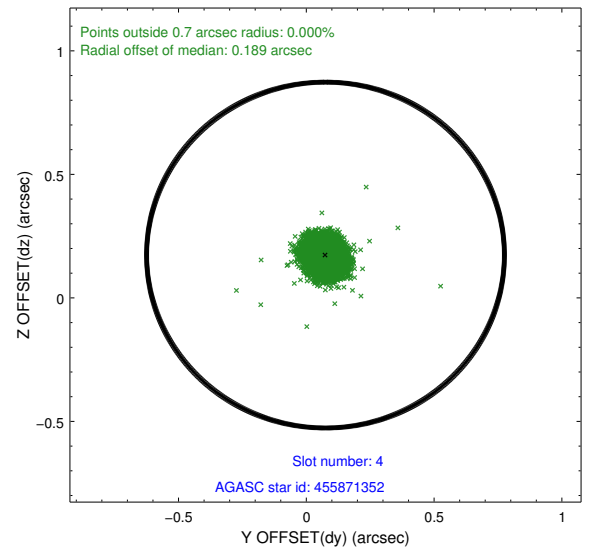
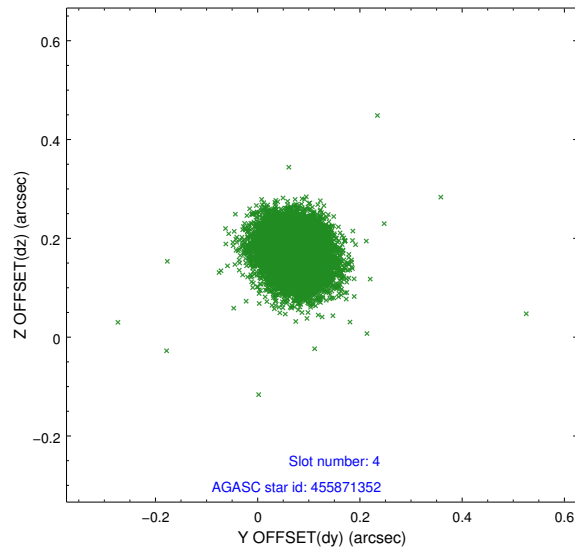
slot	status	id	mag	n_pts	med_dy	med_dz	dr1	dr2	ra	dec	mean_y	mean_z
0	FID	ACIS-I-1	7.04	3987	0.010	0.014	0.019	0.029	0.000000	0.000000	926.43	-838.60
1	FID	ACIS-I-5	7.03	3987	-0.185	0.024	0.008	0.016	0.000000	0.000000	-1821.74	1058.75
2	FID	ACIS-I-6	7.04	3987	0.082	0.033	0.014	0.023	0.000000	0.000000	391.73	1703.58
3	GUIDE	455870320	8.37	7970	-0.080	0.027	0.060	0.097	214.874440	52.401638	1178.58	1010.26
4	GUIDE	455871352	8.08	7974	0.075	0.173	0.059	0.093	215.099961	52.172669	1574.49	1887.68
5	GUIDE	505806936	7.03	7974	0.134	-0.028	0.063	0.105	213.820815	52.535927	2075.95	-1173.41
6	GUIDE	505812088	8.15	7970	-0.041	0.022	0.067	0.113	214.186617	53.263562	-541.85	-1974.20
7	GUIDE	505812376	7.67	7973	-0.088	-0.194	0.044	0.071	214.039537	52.937930	607.73	-1583.34

## 2.4 Star Slots

### 2.4.1 Slot 3

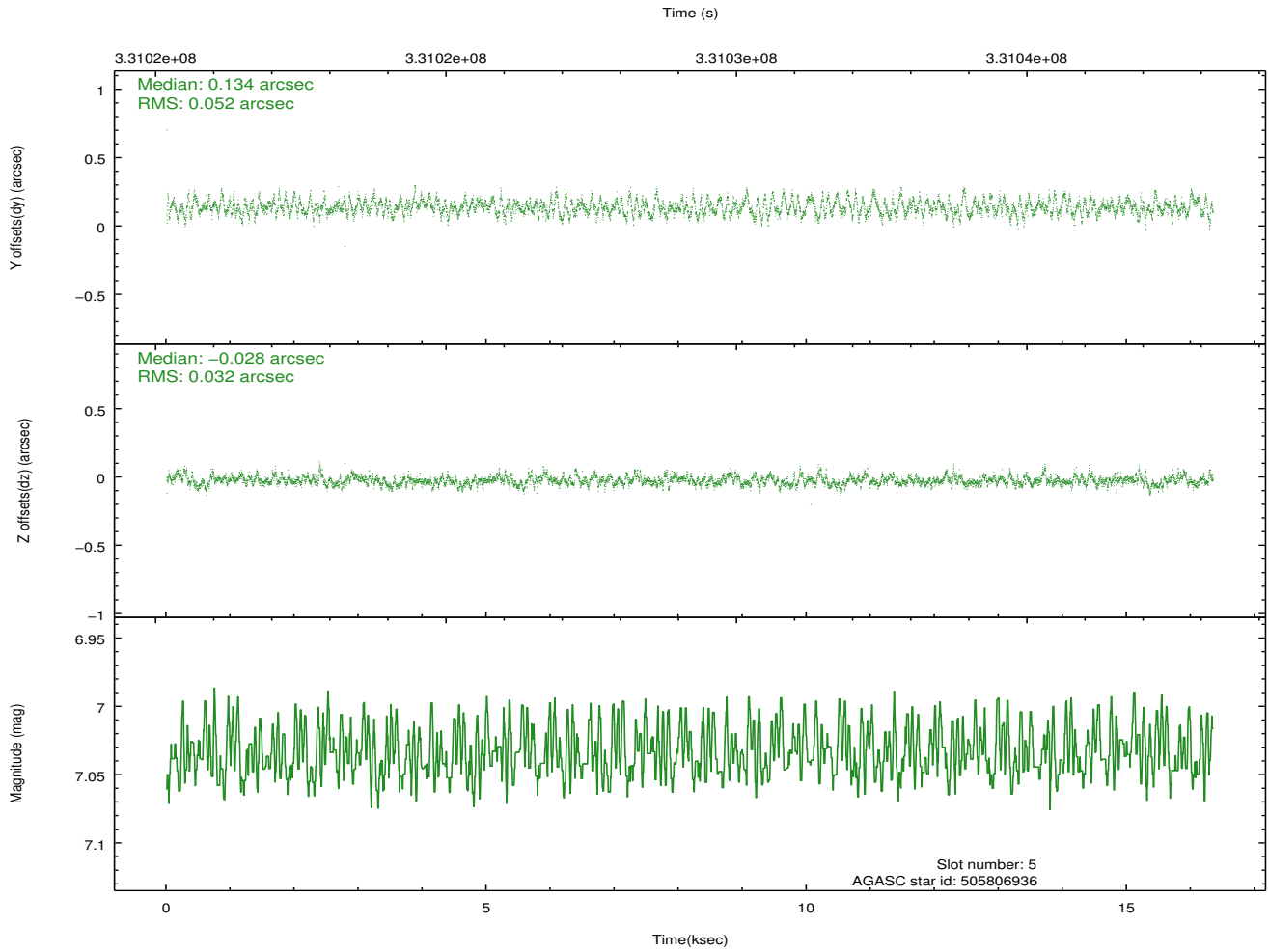
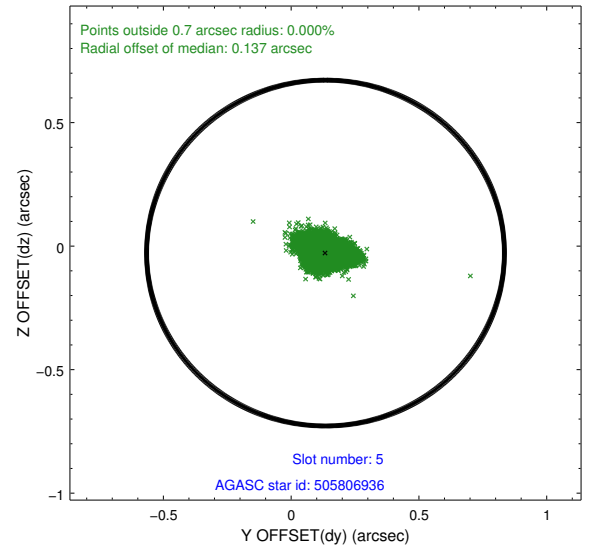
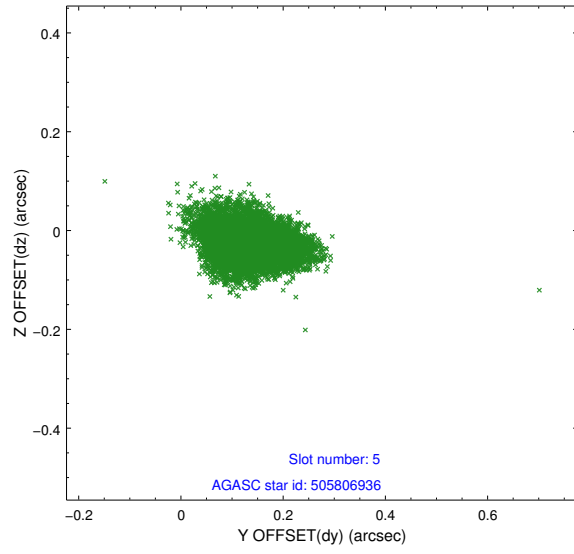


## 2.4.2 Slot 4

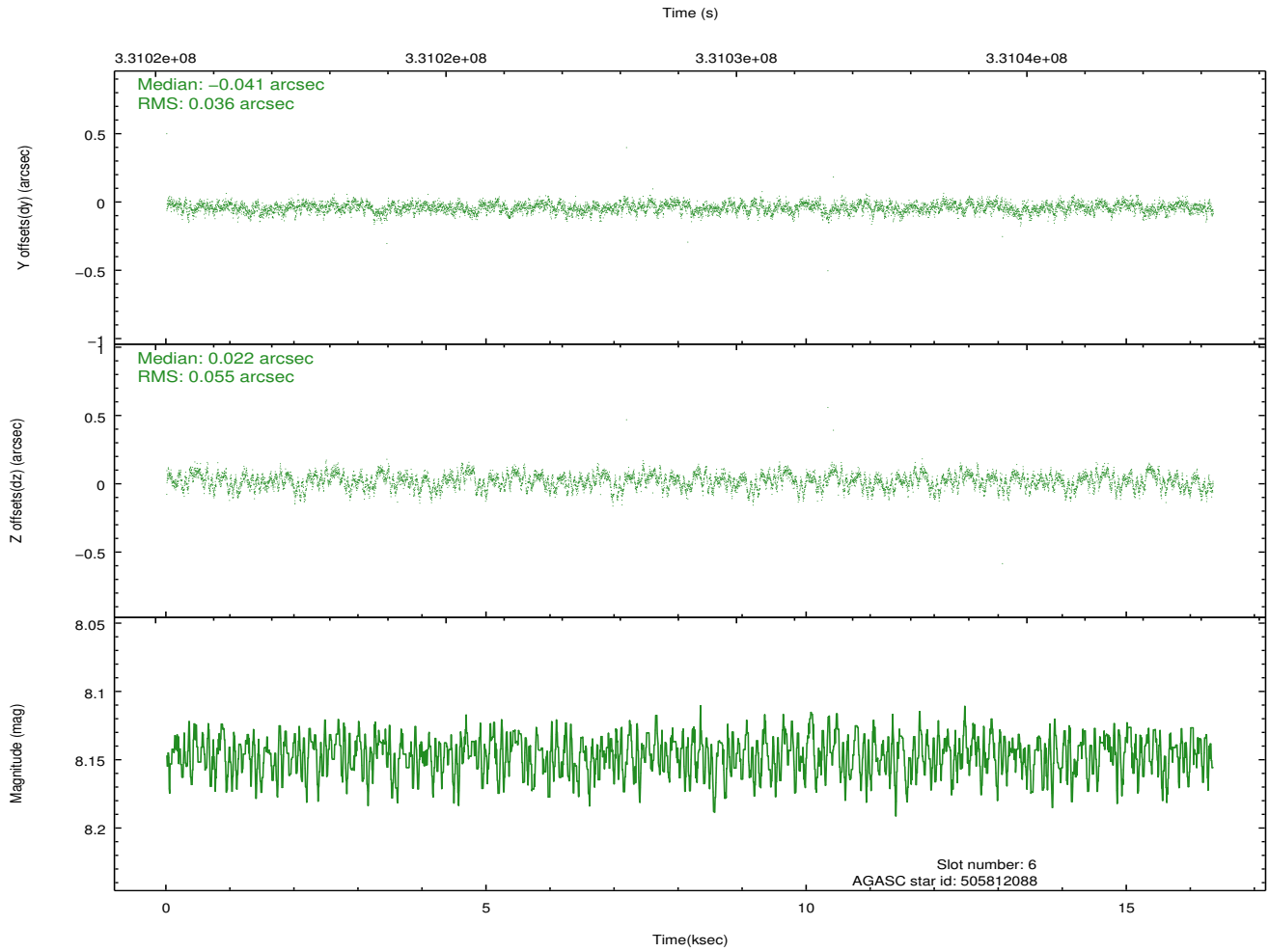
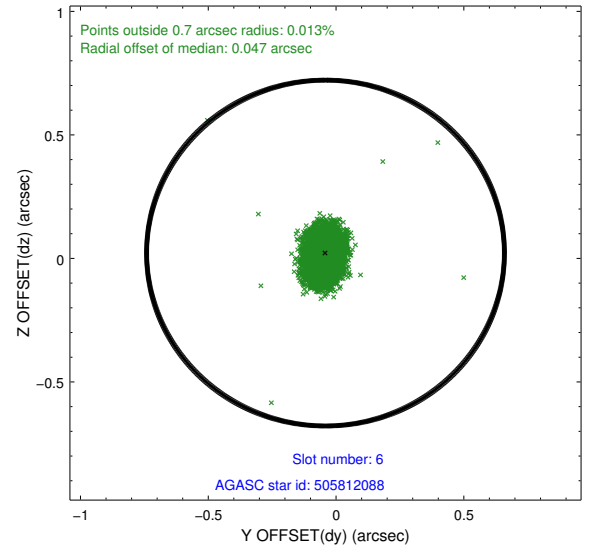
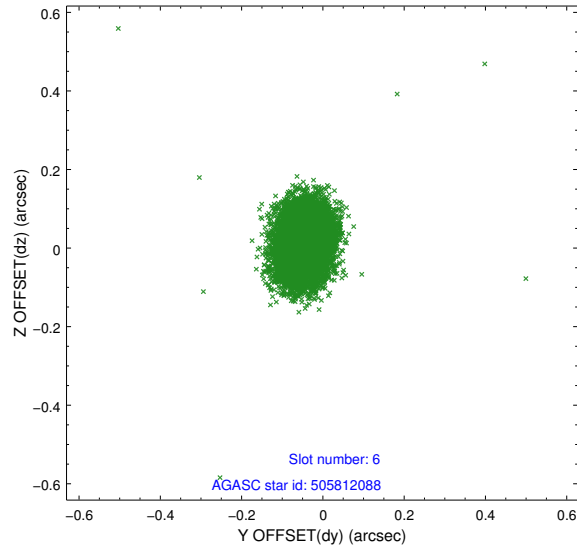




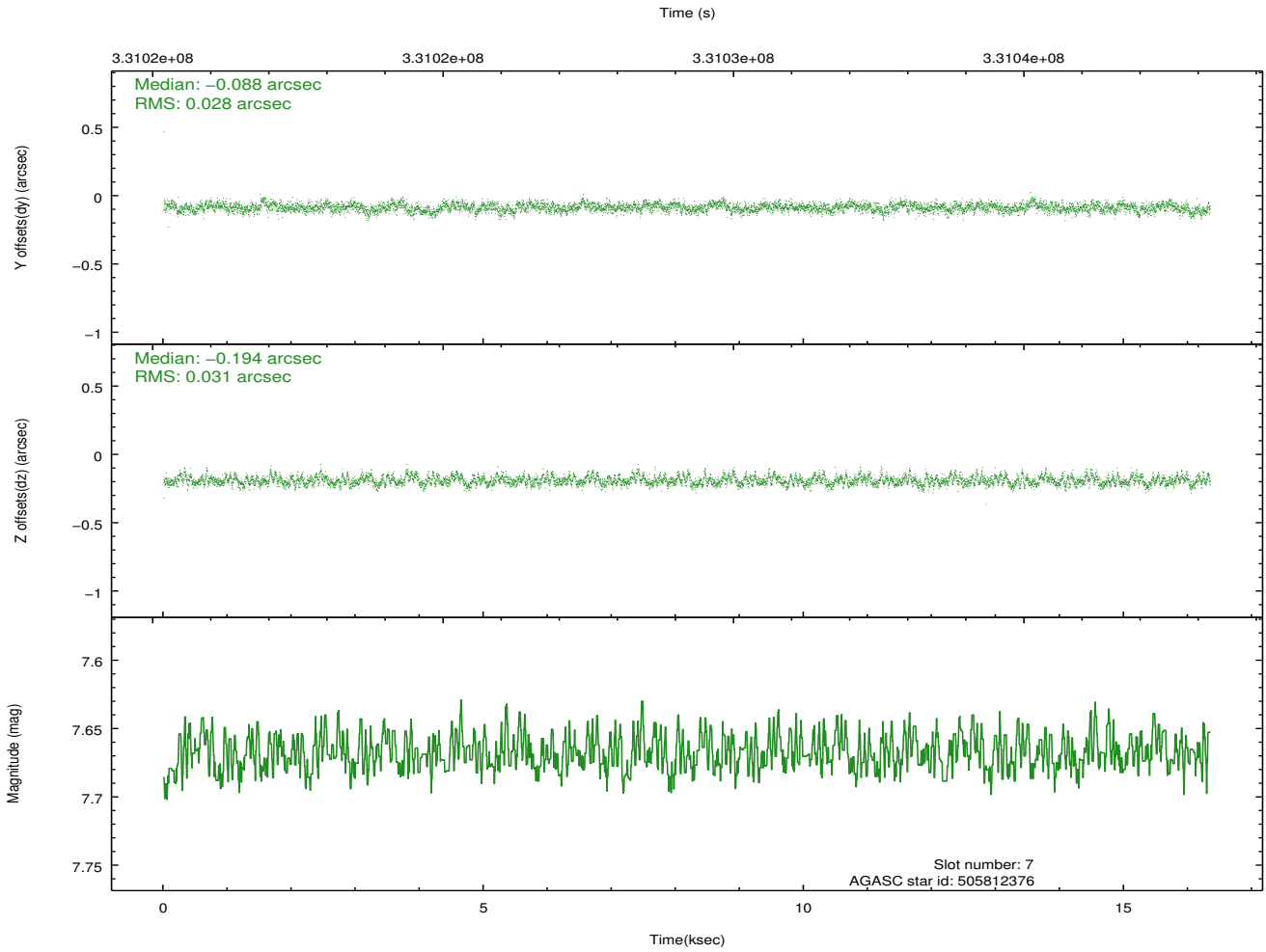
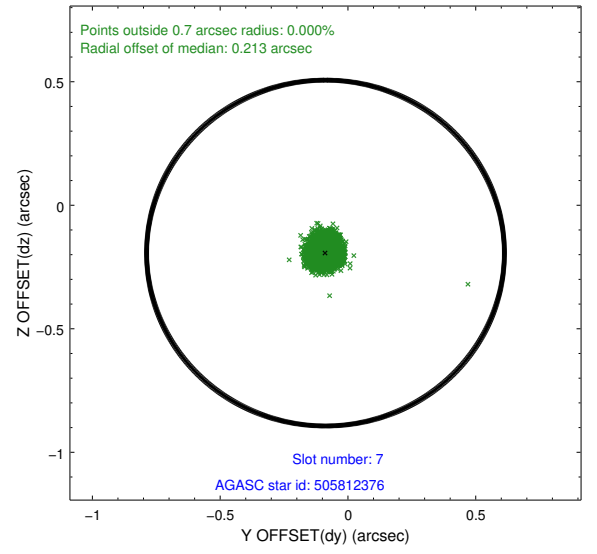
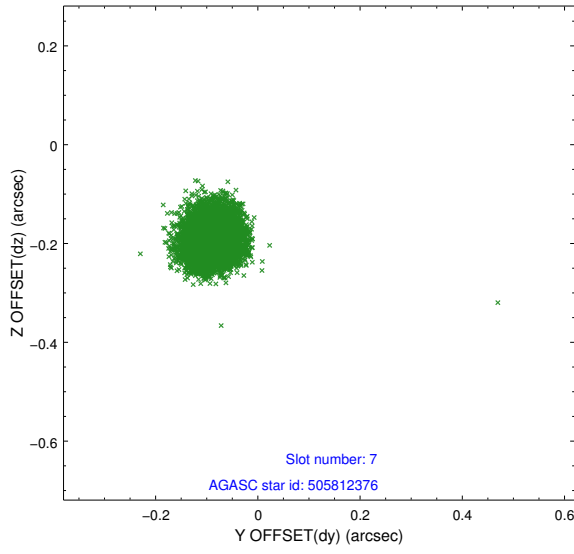
### 2.4.3 Slot 5



## 2.4.4 Slot 6

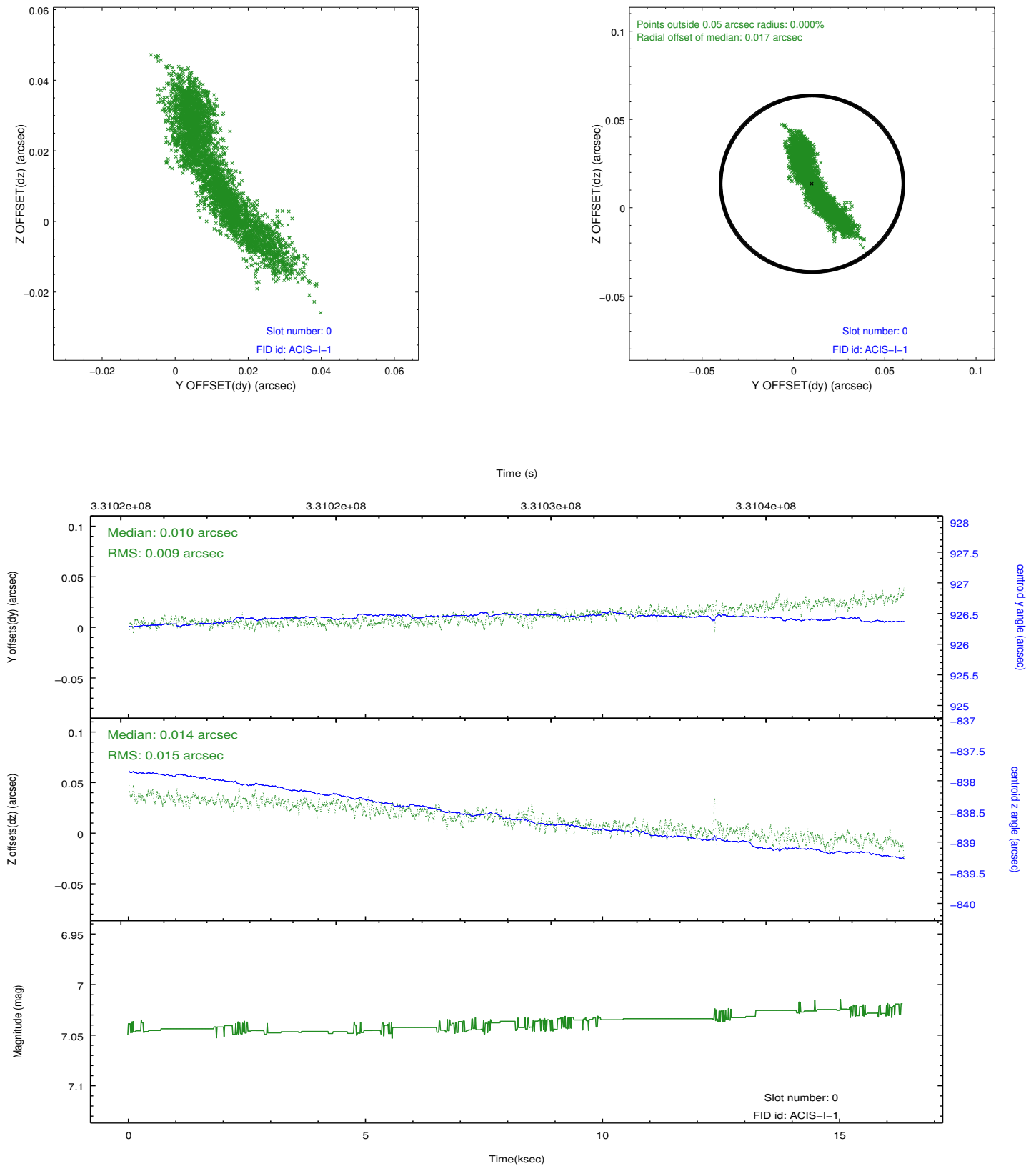


## 2.4.5 Slot 7

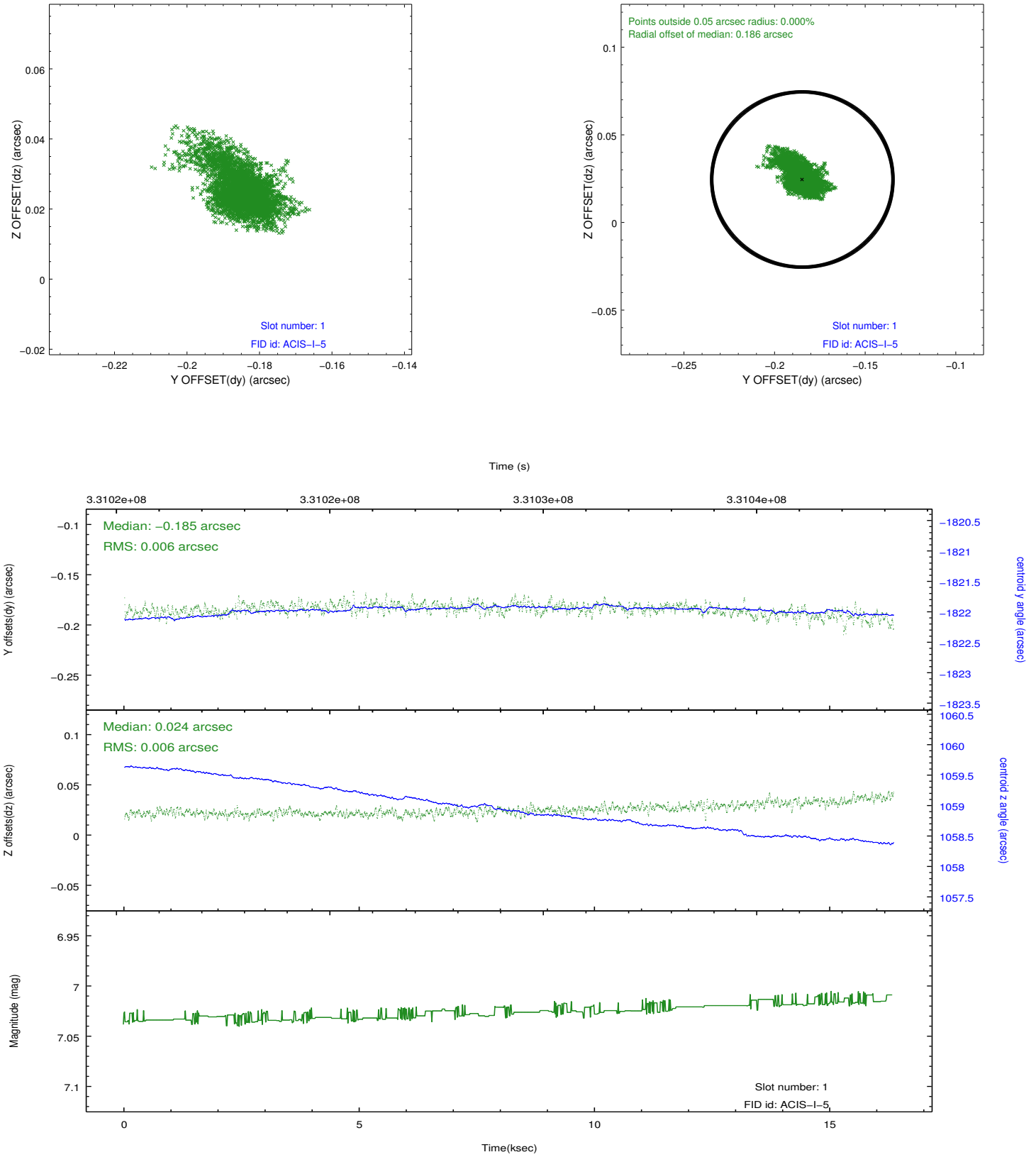


## 2.5 FID Slots

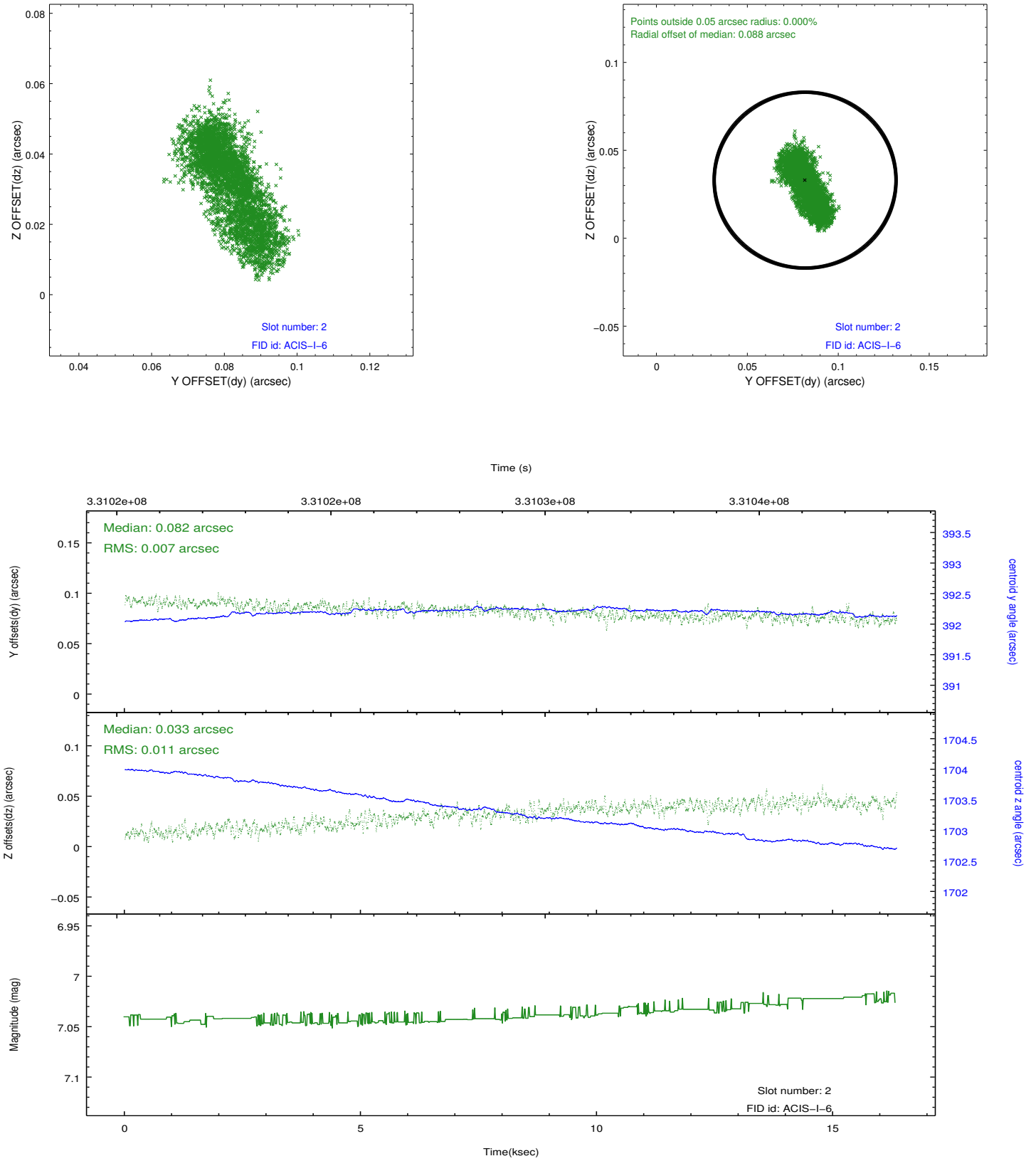
### 2.5.1 Slot 0



## 2.5.2 Slot 1



### 2.5.3 Slot 2



## A Summary

### A.1 Status

V&V Scientist	Jen Lauer
V&V Date (YYYY-MM-DD)	2012.05.22
V&V Edition	1
V&V Disposition and Status	OK
V&V Charge Time	15.9401591

### A.2 Comments

Joint Proposal: Spitzer. Roll constraint met.