

V&V Reference Report

L2 ASCDS Version : 8.4.4

Observation 9817 - L2 Version 2
Chandra X-Ray Center

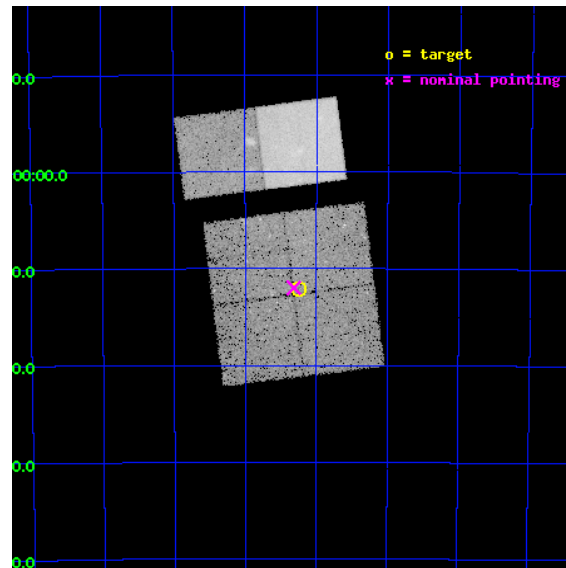
L2 Processing Date : May 10 2012

Contents

1	Front	2
2	OBI	3
2.1	OBI	3
2.1.1	Images	3
2.1.2	Bias	3
2.1.3	Parameters	4
2.1.4	Events	4
2.2	Compared Parameters	5
2.3	Aspect	6
2.4	Star Slots	9
2.4.1	Slot 3	9
2.4.2	Slot 4	10
2.4.3	Slot 5	11
2.4.4	Slot 6	12
2.4.5	Slot 7	13
2.5	FID Slots	14
2.5.1	Slot 0	14
2.5.2	Slot 1	15
2.5.3	Slot 2	16
A	Summary	17
A.1	Status	17
A.2	Comments	17

1 Front

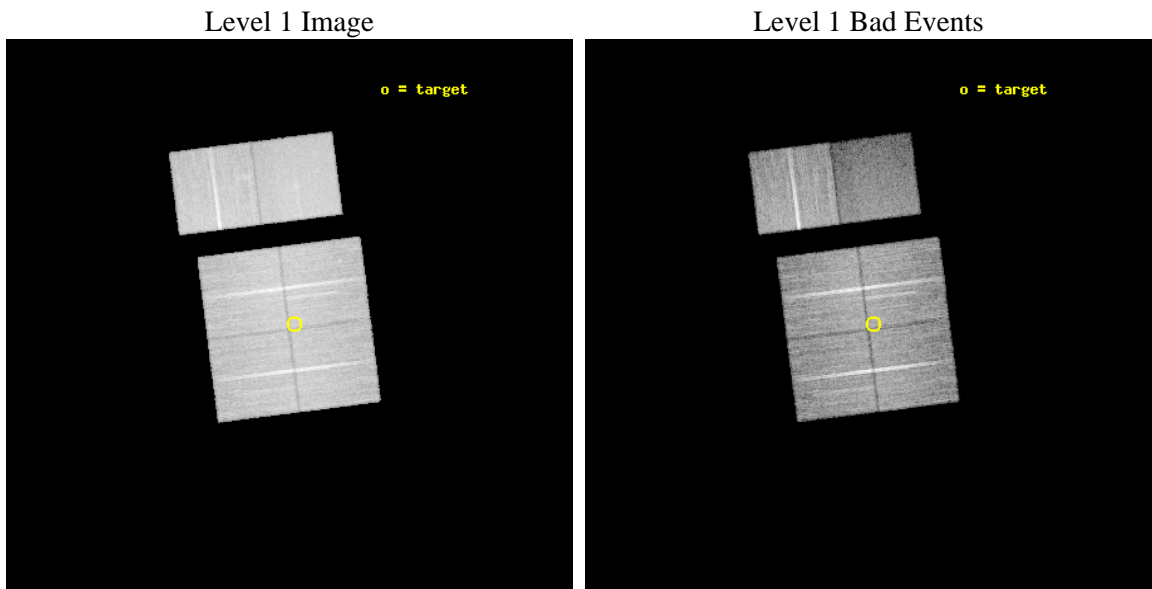
seq_num	900829	Sequence number
obs_id	9817	Observation id
title	The Great Nebula in Carina: Protoplanetary Disks to Starburst Galaxies	Proposal title
observer	Dr. Leisa Townsley	Principal investigator
object	Carina South Pillars Ptg 1	Source name
dtcycle	0	
cycle	P	events from which exps? Prim/Second/Both
ra_targ	161.312917	Observer's specified target RA [deg]
dec_targ	-60.20125	Observer's specified target Dec [deg]
ra_nom	161.32897863024	Nominal RA [deg]
dec_nom	-60.199829992639	Nominal Dec [deg]
roll_nom	352.74370486898	Nominal Roll [deg]
revision	2	Processing version of data
ontime	20181.426872849	Sum of GTIs [s]
livetime	19925.877493989	Livetime [s]
ontime0	20194.267744005	Sum of GTIs [s]
ontime1	20194.308784008	Sum of GTIs [s]
ontime2	20191.10883373	Sum of GTIs [s]
ontime3	20181.426872849	Sum of GTIs [s]
ontime6	20194.472944021	Sum of GTIs [s]
ontime7	20194.431904018	Sum of GTIs [s]
l2events	168792	Number of level 2 events



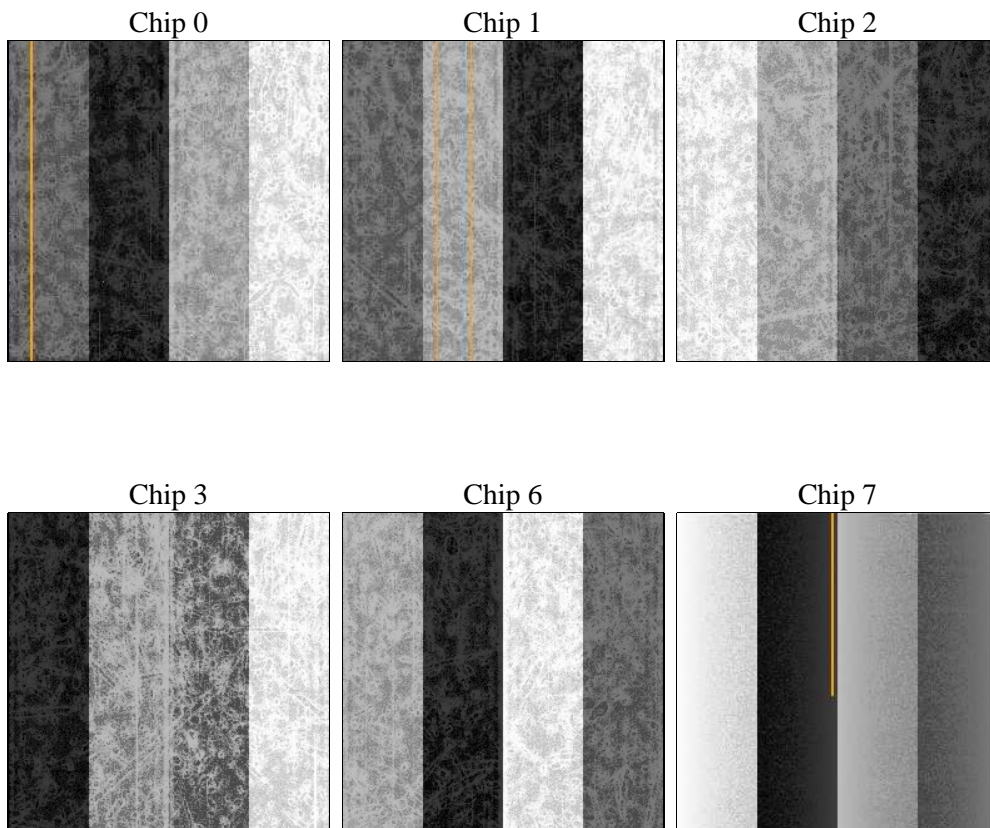
2 OBI

2.1 OBI

2.1.1 Images



2.1.2 Bias



2.1.3 Parameters

obi_num	2	Obi number	sched_exp_time	20150.000000	[s] Scheduled observation exposure time
ascdsver	8.4.4	Processing system revision	ontime	20181.426872849	Sum of GTIs [s]
caldsver	4.4.9	 	ontime0	20194.267744005	Sum of GTIs [s]
date	2012-05-10T23:03:05	Date and time of file creation	ontime1	20194.308784008	Sum of GTIs [s]
revision	2	Processing version of data	ontime2	20191.10883373	Sum of GTIs [s]
			ontime3	20181.426872849	Sum of GTIs [s]
			ontime6	20194.472944021	Sum of GTIs [s]
			ontime7	20194.431904018	Sum of GTIs [s]
			l1events	931869	Number of level 1 events

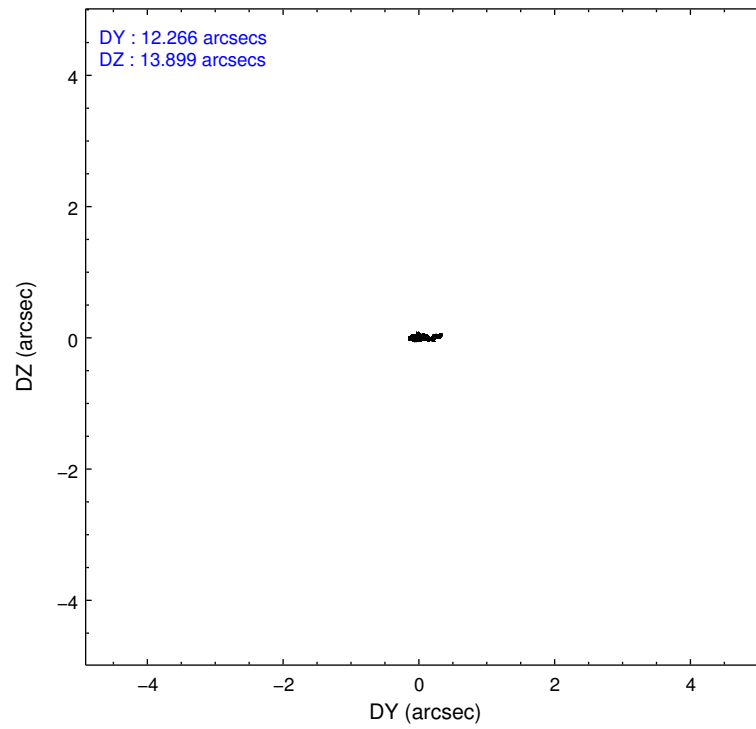
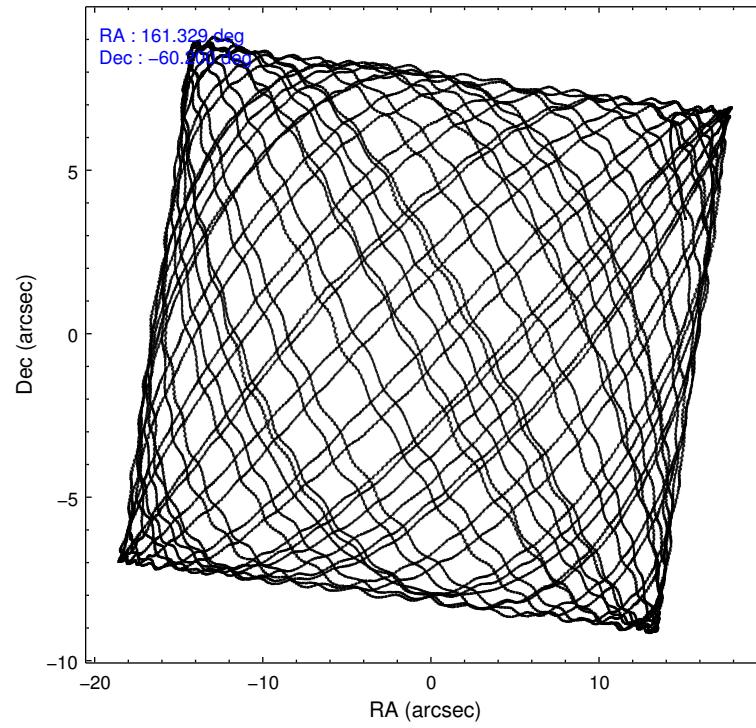
2.1.4 Events

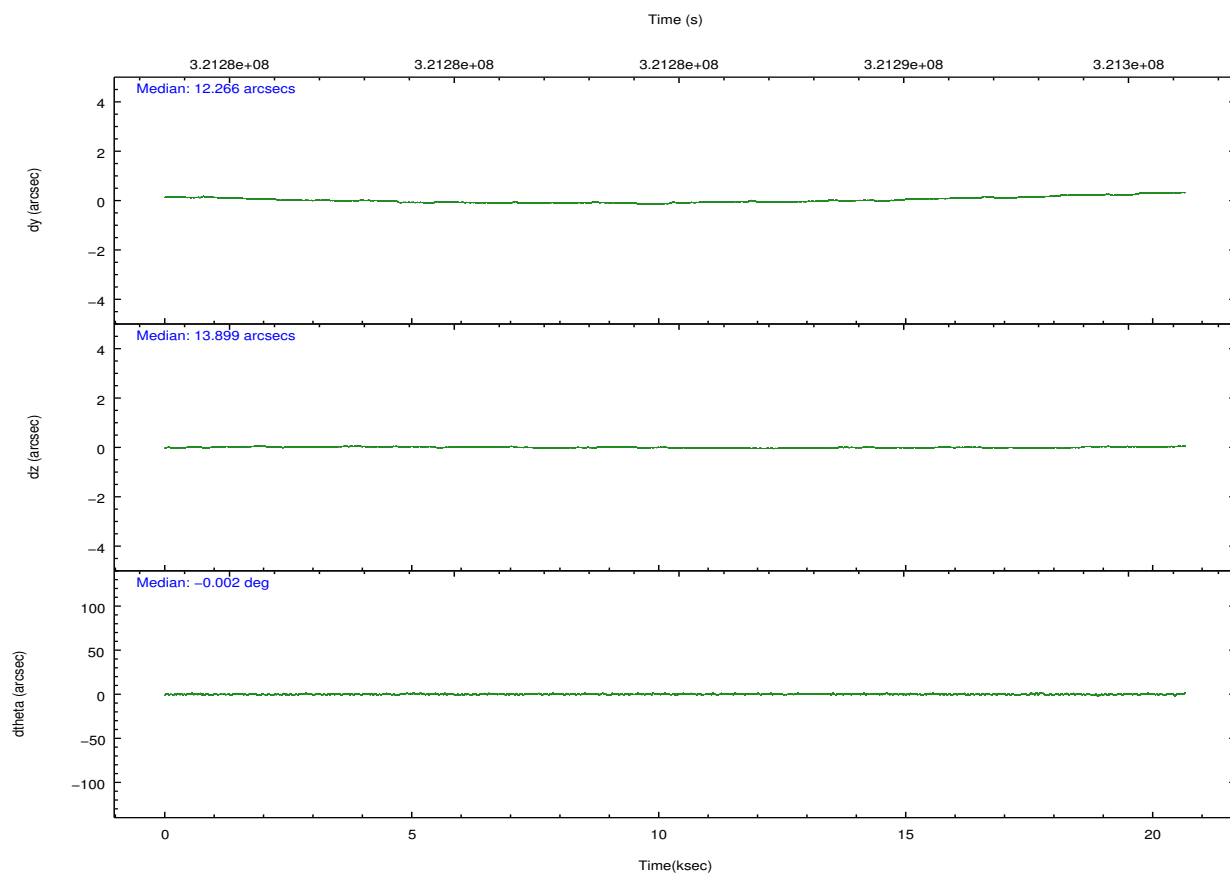
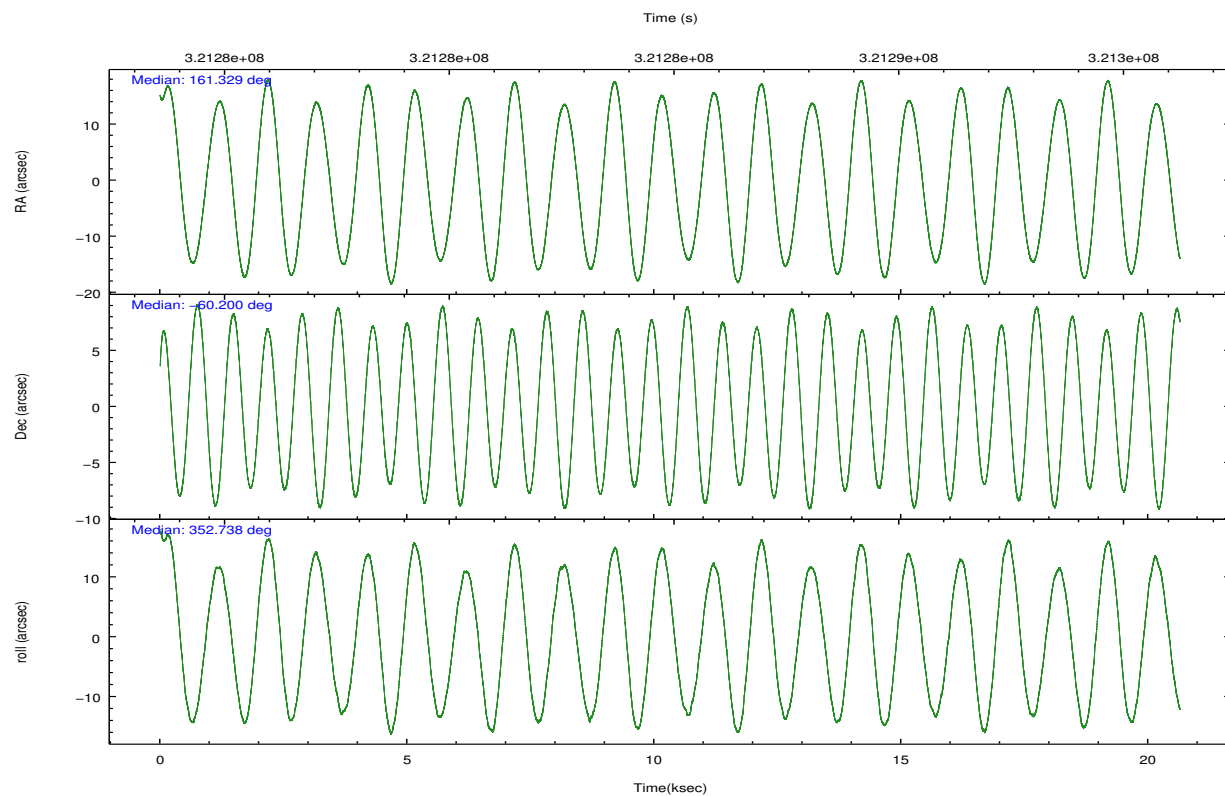
	ccd 0	ccd 1	ccd 2	ccd 3	ccd 6	ccd 7		ccd 0	ccd 1	ccd 2	ccd 3	ccd 6	ccd 7
level 1 events	142647	141430	160108	156123	166833	164728	grade 0 events	6931	7007	9151	9116	12494	13627
rejected events	125994	123949	141091	137729	143178	74137		4%	4%	5%	5%	7%	8%
rejected %	88%	87%	88%	88%	85%	45%	grade 1 events	91	87	97	107	115	255
								0%	0%	0%	0%	0%	0%
							grade 2 events	3625	3637	4007	3242	4178	20401
								2%	2%	2%	2%	2%	12%
							grade 3 events	1698	1844	1672	1631	1864	9194
								1%	1%	1%	1%	1%	5%
							grade 4 events	1619	1766	1604	1642	1846	8808
								1%	1%	1%	1%	1%	5%
							grade 5 events	4504	4978	4321	5376	5481	15737
								3%	3%	2%	3%	3%	9%
							grade 6 events	2781	3229	2584	2766	3274	38575
								1%	2%	1%	1%	1%	23%
							grade 7 events	121398	118882	136672	132243	137581	58131
								85%	84%	85%	84%	82%	35%

2.2 Compared Parameters

Parameter	Planned	Actual	Parameter	Planned	Actual
Instrument	ACIS	ACIS	Obspar format version number	7	7
Detector	ACIS-012367	ACIS-012367	Obspar file type	PREDICTED	ACTUAL
Grating	NONE	NONE	Obspar update status	NONE	UPDATED
Data mode	VFAINT	VFAINT	CCD I0 on	Y	Y
Observation mode	POINTING	POINTING	CCD I1 on	Y	Y
[deg] Pointing RA	161.277971	161.3289786302355	CCD I2 on	Y	Y
[deg] Pointing Dec	-60.210564	-60.19982999263892	CCD I3 on	Y	Y
[deg] Pointing Roll	352.490758	352.7437048689794	CCD S0 on	N	N
[mm] SIM focus pos	-0.782348	-0.7809083437167272	CCD S1 on	N	N
[mm] SIM defocus	0	0.001439871863259334	CCD S2 on	O1	Y
[mm] SIM translation stage pos	-233.592463	-233.5874344608287	CCD S3 on	O2	Y
[mm] SIM translation stage offset	0	-0.005018542100998502	CCD S4 on	N	N
[s] Observation start time (MET)	321275095.184000	321273931.99388	CCD S5 on	N	N
Observation start date	2008-03-07T11:03:50	2008-03-07T10:45:31	Number of optional ACIS chips dropped	0	0
[s] Observation end time (MET)	321295245.184000	321296015.10746	On-chip summing requested	N	N
Observation end date	2008-03-07T16:39:40	2008-03-07T16:53:35	Subarray requested	NONE	NONE
Read mode	TIMED	TIMED	Alternating exposures requested	N	N
			[s] Primary exposure time	0.000000	3.2

2.3 Aspect



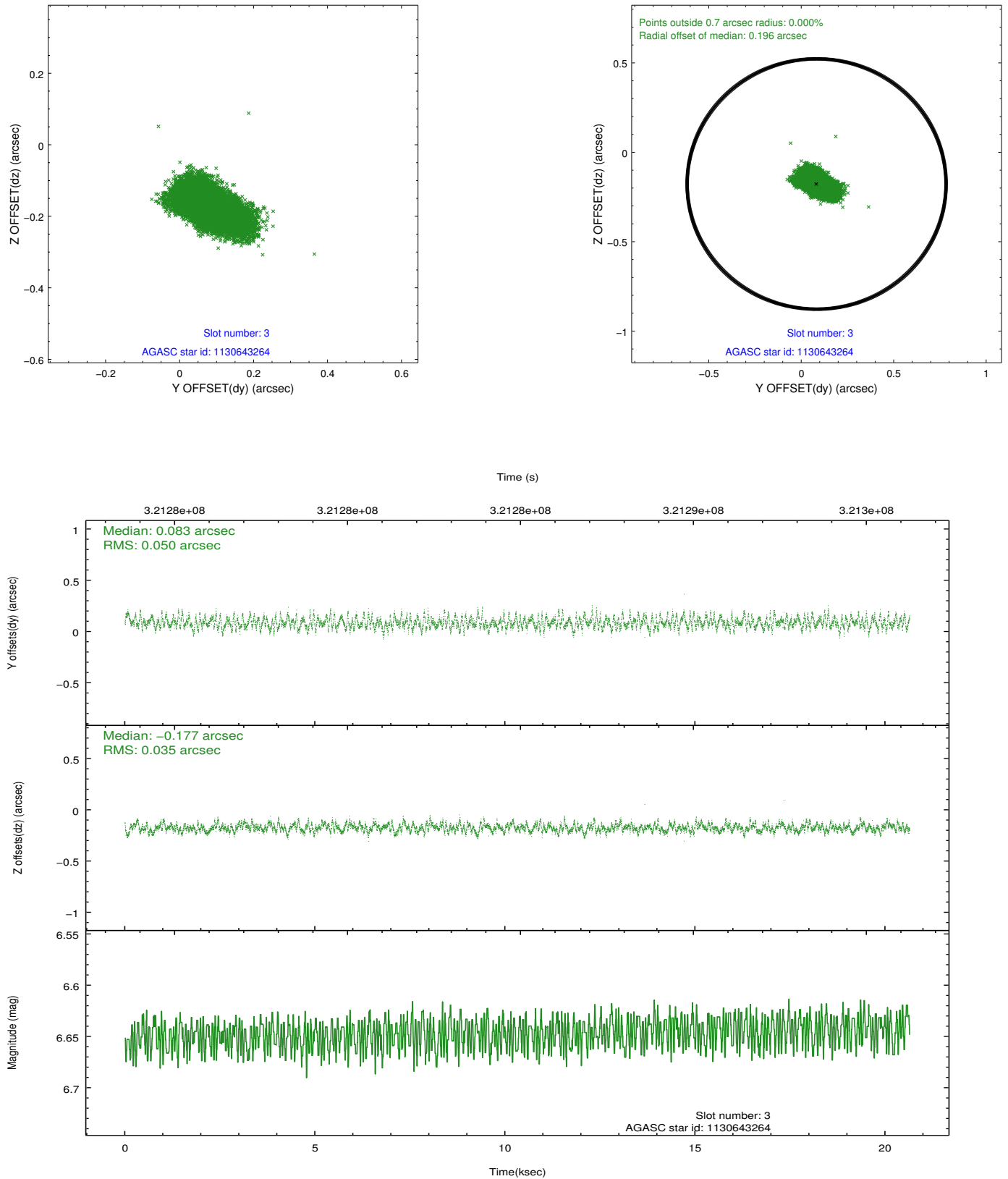


Slot Statistics

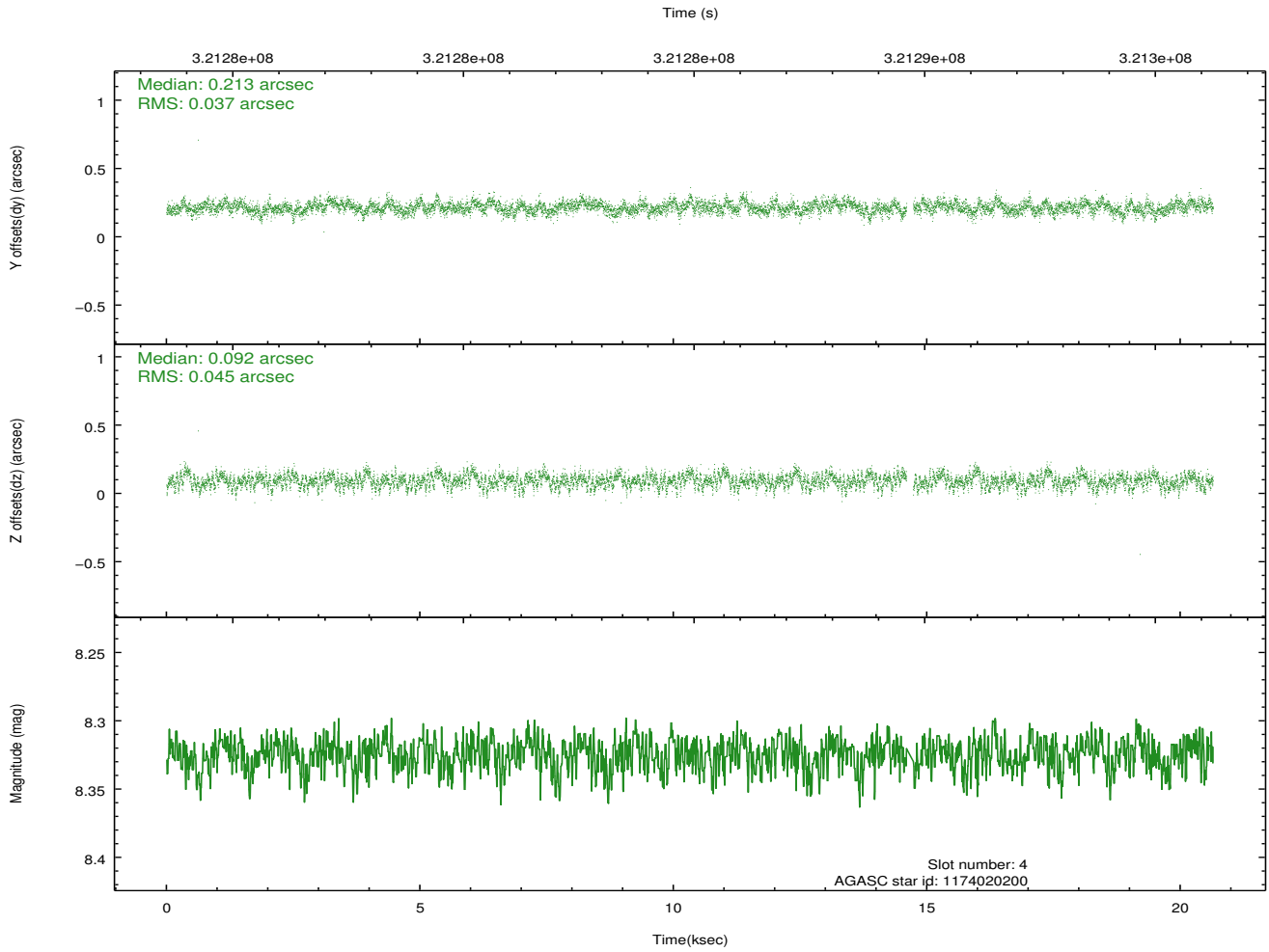
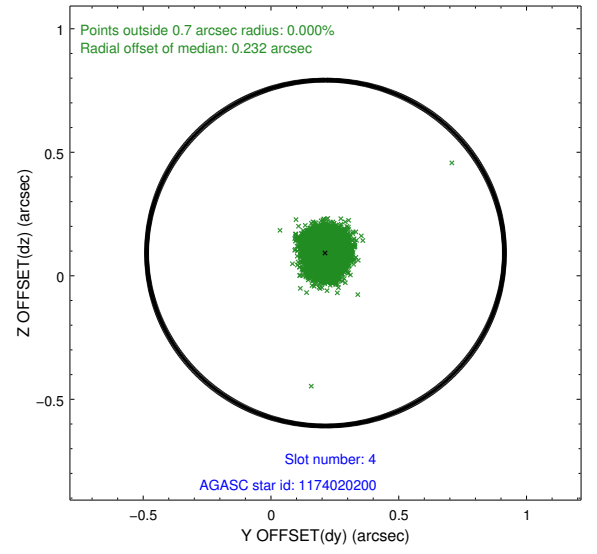
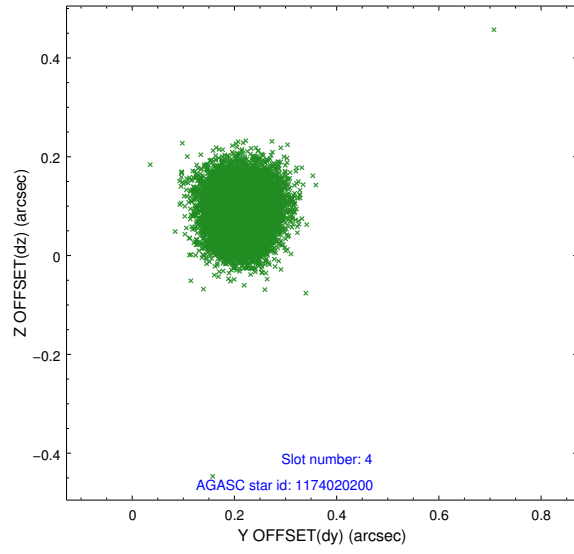
slot	status	id	mag	n_pts	med_dy	med_dz	dr1	dr2	ra	dec	mean_y	mean_z
0	FID	ACIS-I-1	7.23	5035	0.024	0.017	0.007	0.013	0.000000	0.000000	927.26	-837.46
1	FID	ACIS-I-5	7.22	5036	-0.171	0.045	0.008	0.012	0.000000	0.000000	-1820.94	1059.98
2	FID	ACIS-I-6	7.23	5036	0.056	0.009	0.008	0.014	0.000000	0.000000	392.65	1704.64
3	GUIDE	1130643264	6.65	10072	0.083	-0.177	0.064	0.109	160.322990	-59.676912	-1970.18	1665.28
4	GUIDE	1174020200	8.32	10001	0.213	0.092	0.061	0.099	160.489138	-60.487295	-1255.37	-1178.53
5	GUIDE	1174033752	8.45	10067	-0.019	-0.108	0.055	0.088	162.418977	-60.164599	2006.64	413.77
6	GUIDE	1174042520	8.69	10069	-0.090	0.100	0.069	0.114	161.882835	-60.770414	1318.73	-1863.63
7	GUIDE	1174031160	8.82	10067	-0.184	0.096	0.094	0.156	162.483783	-60.757597	2362.53	-1694.30

2.4 Star Slots

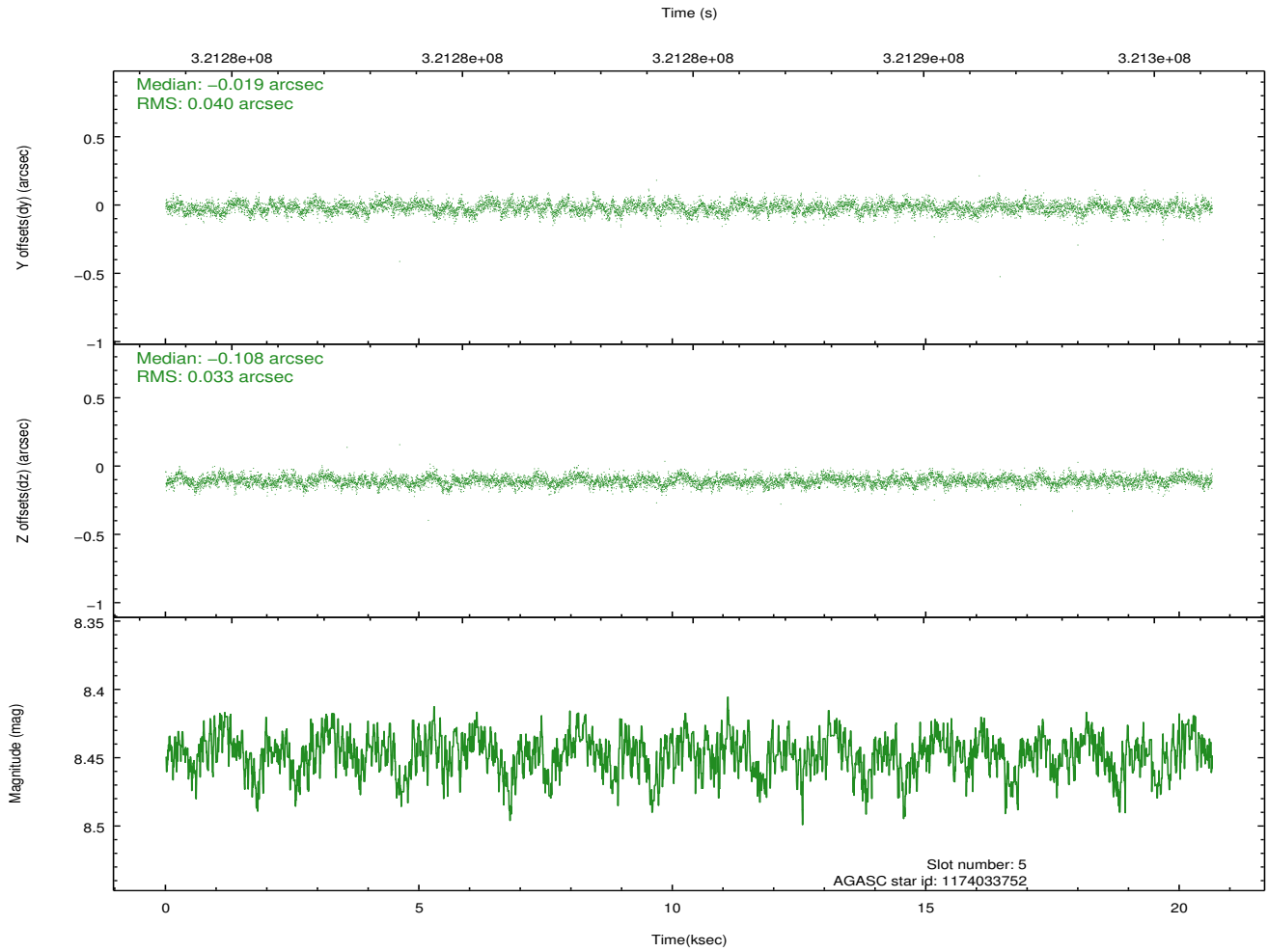
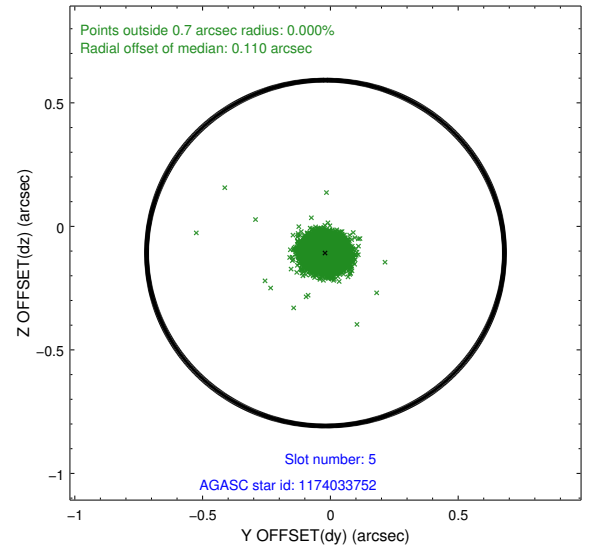
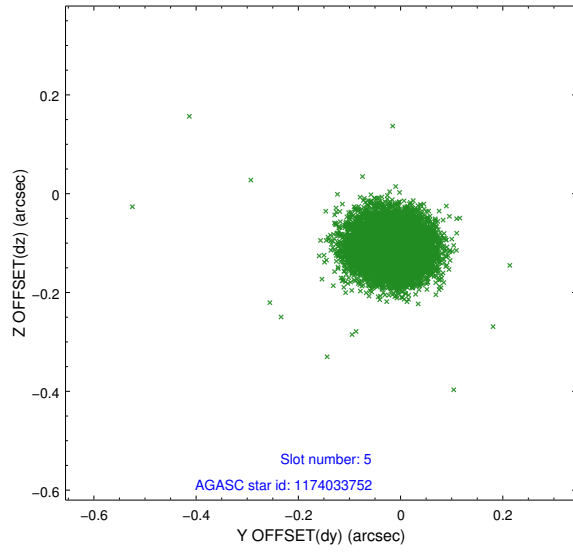
2.4.1 Slot 3



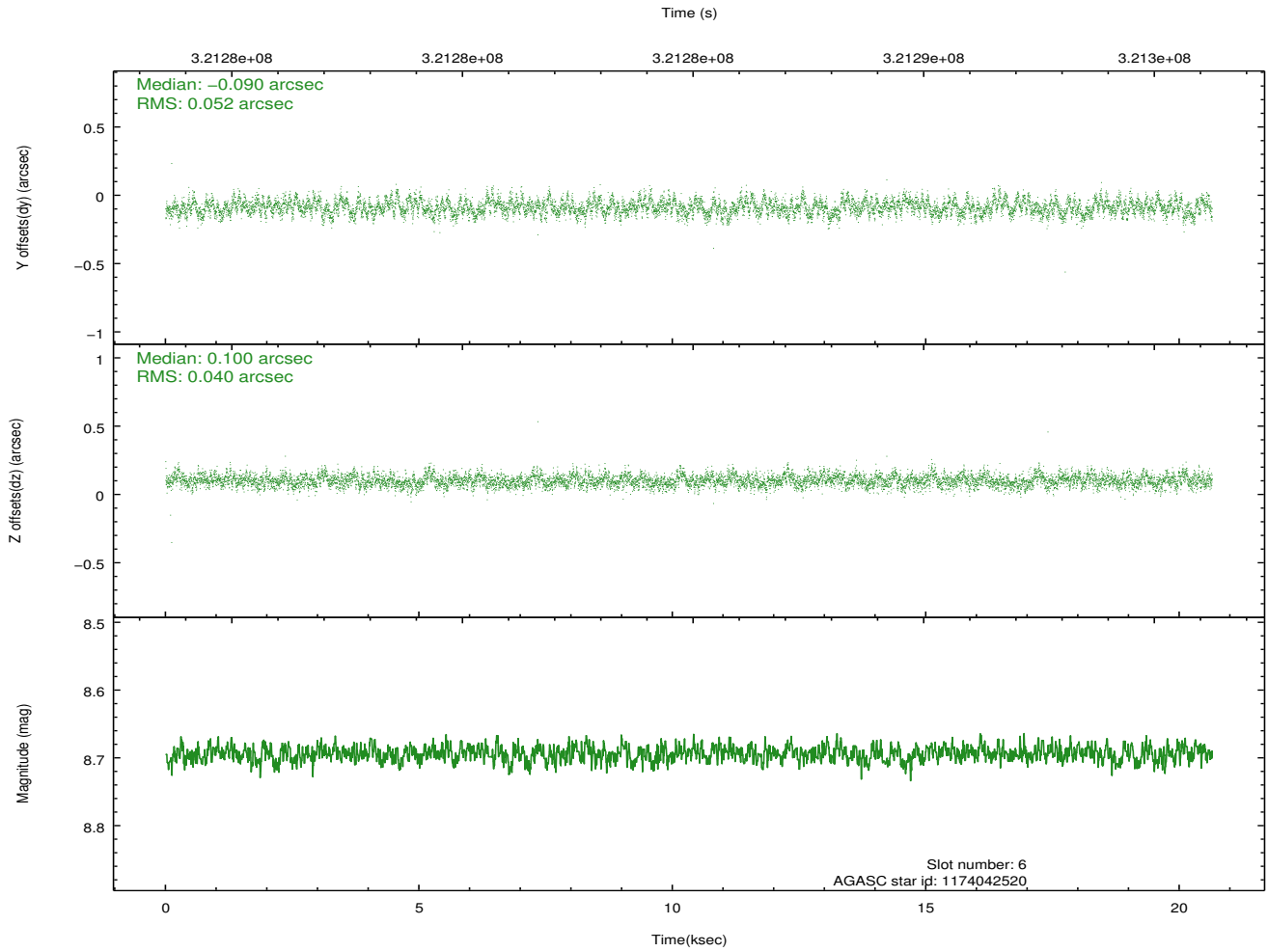
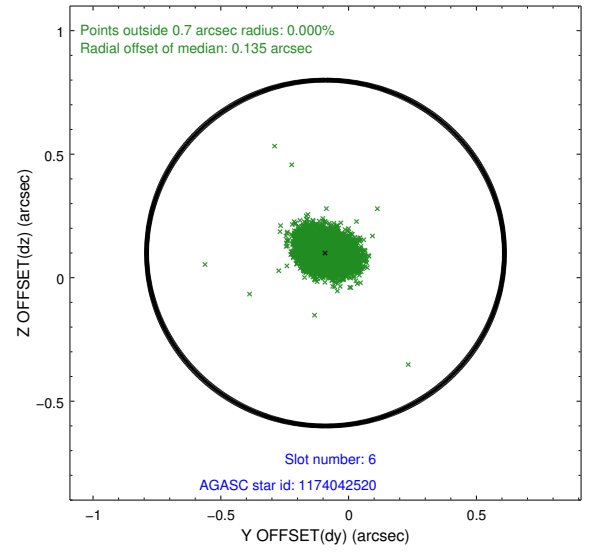
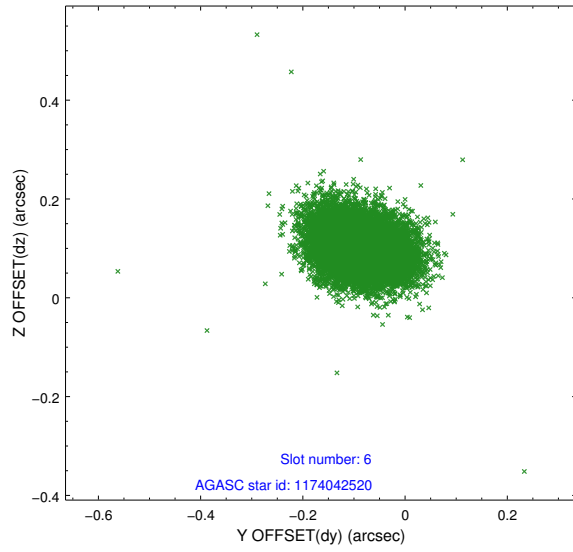
2.4.2 Slot 4



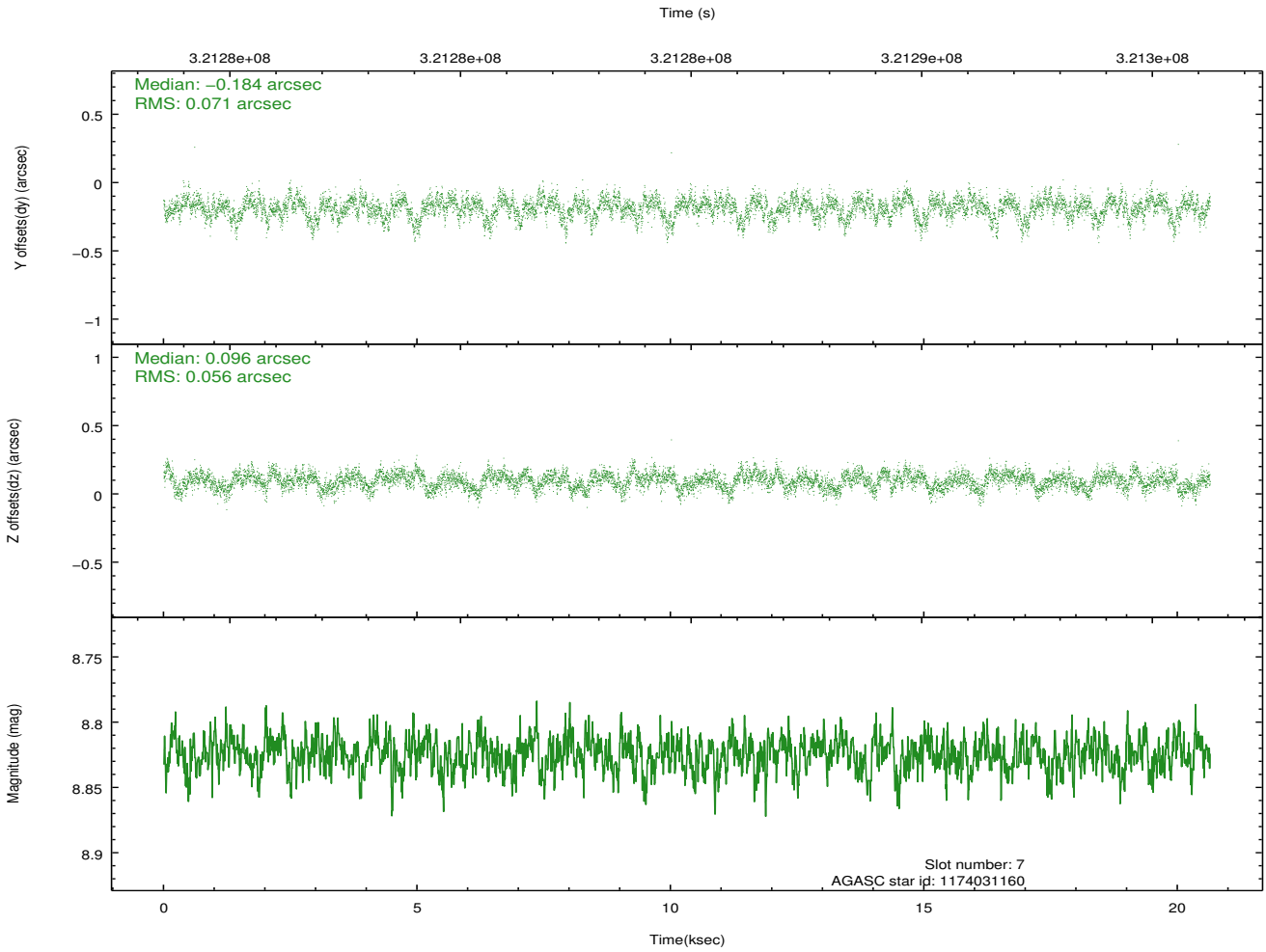
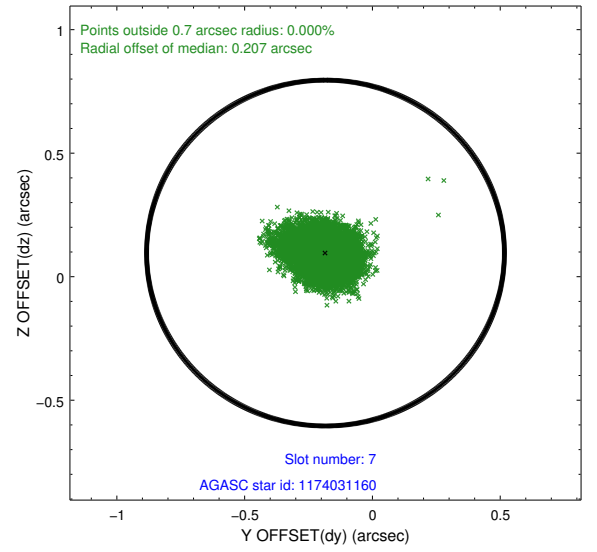
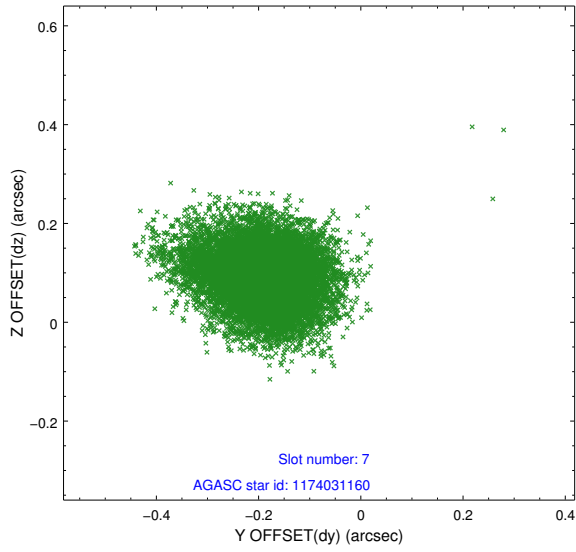
2.4.3 Slot 5



2.4.4 Slot 6

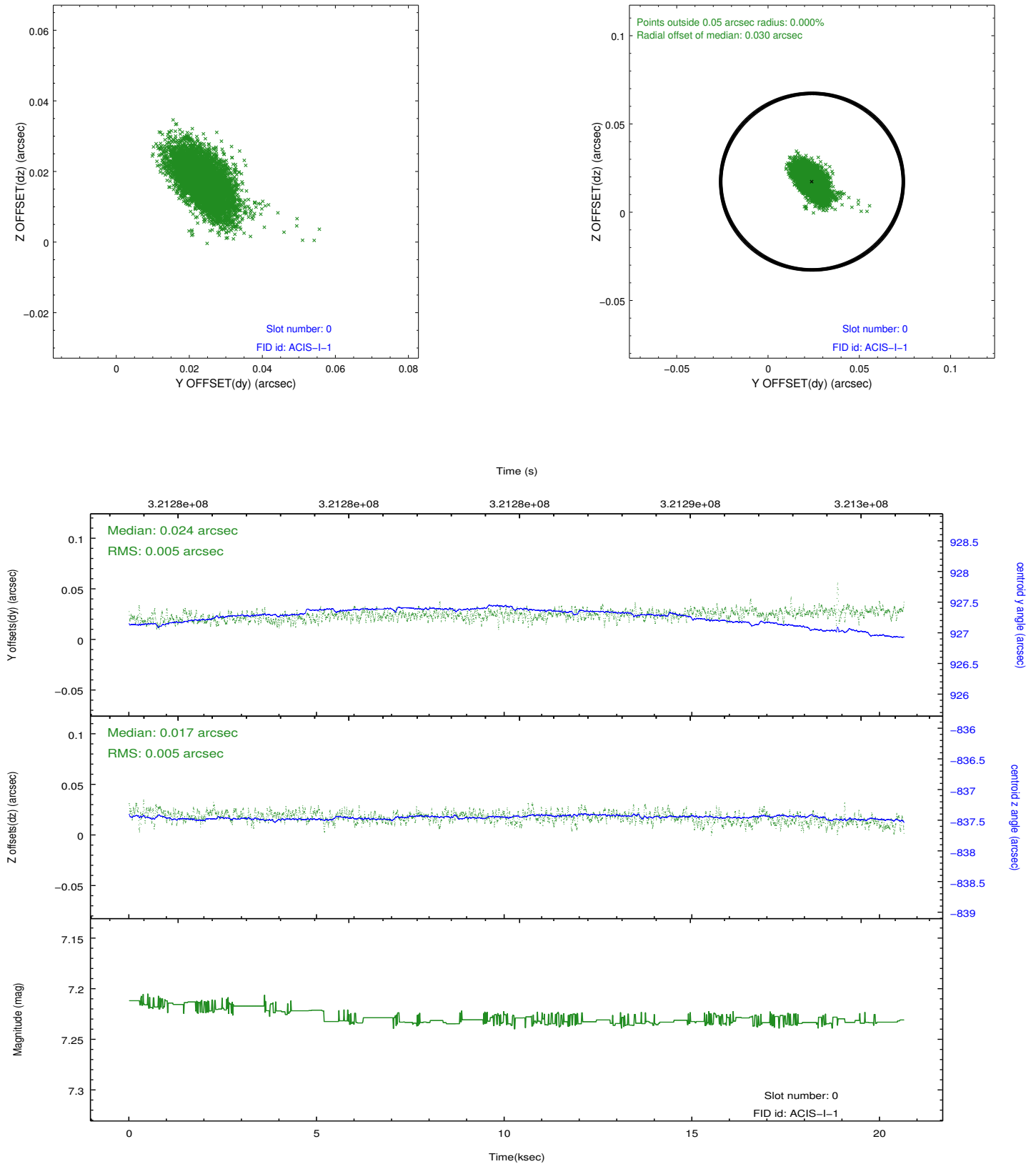


2.4.5 Slot 7

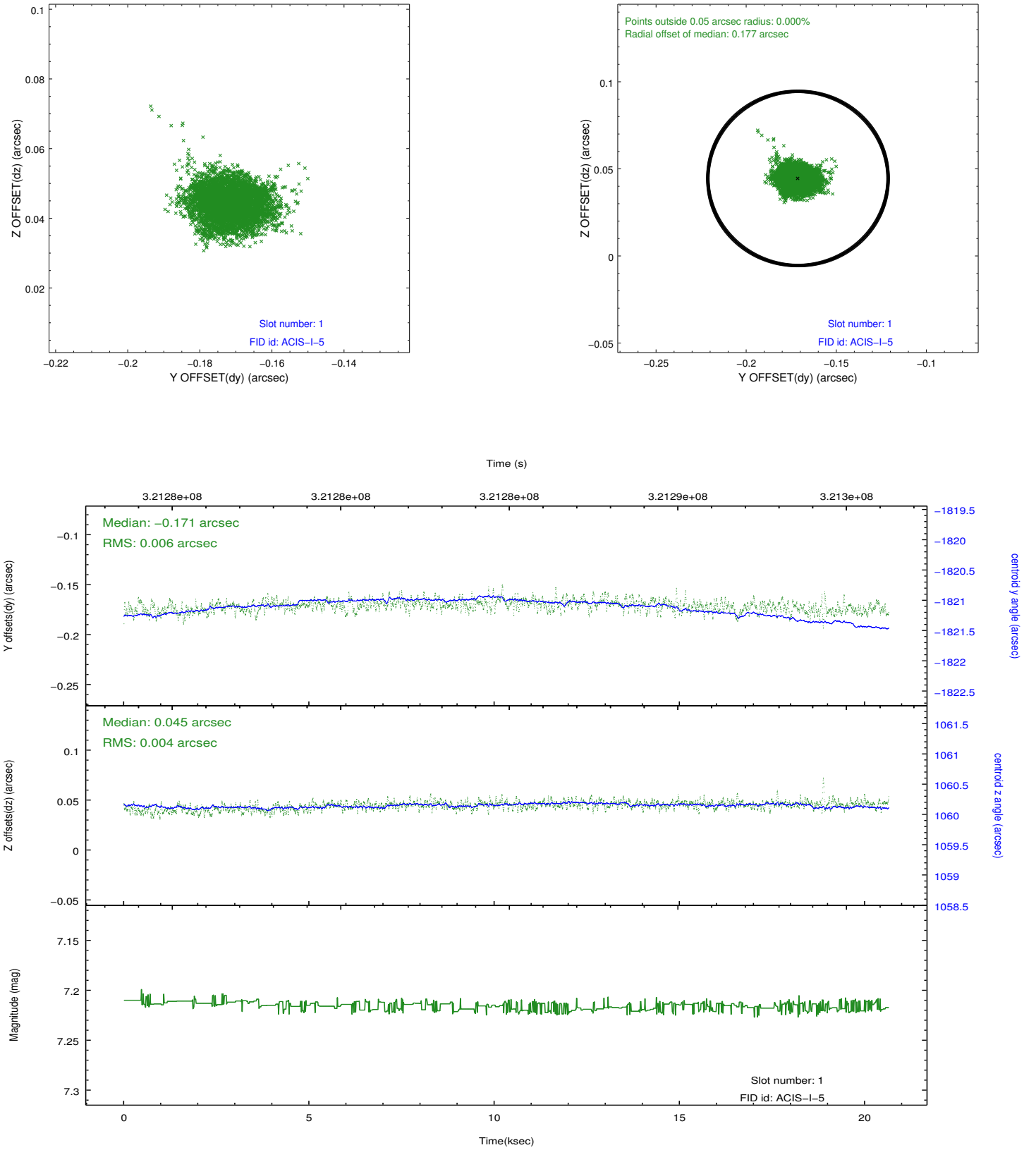


2.5 FID Slots

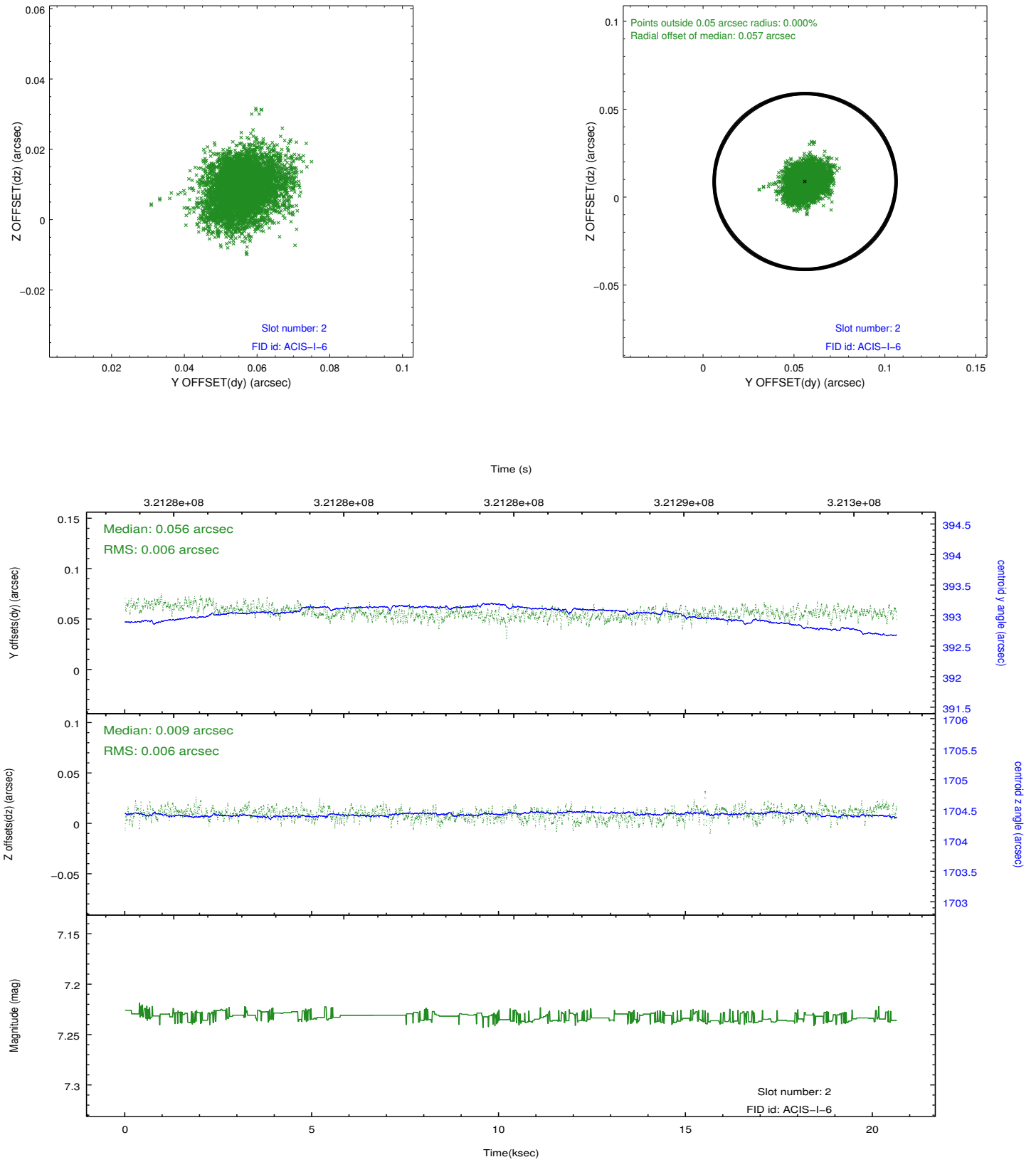
2.5.1 Slot 0



2.5.2 Slot 1



2.5.3 Slot 2



A Summary

A.1 Status

V&V Scientist	Beth Sundheim
V&V Date (YYYY-MM-DD)	2012.05.14
V&V Edition	1
V&V Disposition and Status	OK
V&V Charge Time	20.1822359

A.2 Comments