

# V&V Reference Report

## L2 ASCDS Version : 8.4.4

Observation 9492 - L2 Version 2  
Chandra X-Ray Center

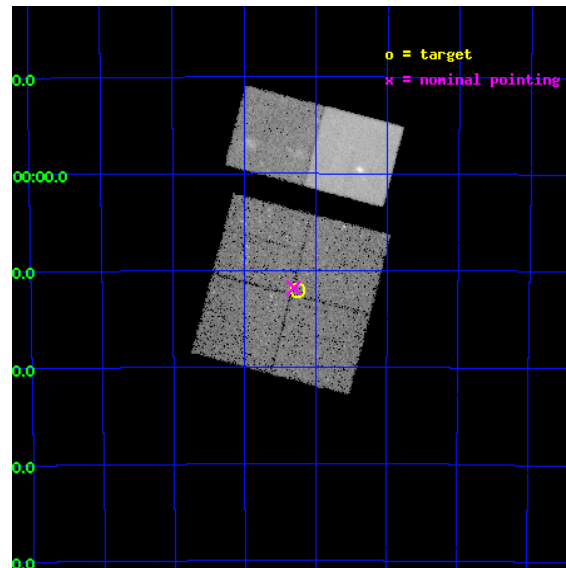
L2 Processing Date : May 9 2012

## Contents

<b>1</b>	<b>Front</b>	<b>2</b>
<b>2</b>	<b>OBI</b>	<b>3</b>
2.1	OBI . . . . .	3
2.1.1	Images . . . . .	3
2.1.2	Bias . . . . .	3
2.1.3	Parameters . . . . .	4
2.1.4	Events . . . . .	4
2.2	Compared Parameters . . . . .	5
2.3	Aspect . . . . .	6
2.4	Star Slots . . . . .	9
2.4.1	Slot 3 . . . . .	9
2.4.2	Slot 4 . . . . .	10
2.4.3	Slot 5 . . . . .	11
2.4.4	Slot 6 . . . . .	12
2.4.5	Slot 7 . . . . .	13
2.5	FID Slots . . . . .	14
2.5.1	Slot 0 . . . . .	14
2.5.2	Slot 1 . . . . .	15
2.5.3	Slot 2 . . . . .	16
<b>A</b>	<b>Summary</b>	<b>17</b>
A.1	Status . . . . .	17
A.2	Comments . . . . .	17

# 1 Front

seq_num	900829	Sequence number
obs_id	9492	Observation id
title	The Great Nebula in Carina: Protoplanetary Disks to Starburst Galaxies	Proposal title
observer	Dr. Leisa Townsley	Principal investigator
object	Carina South Pillars Ptg 1	Source name
dtcycle	0	&#160
cycle	P	events from which exps? Prim/Second/Both
ra_targ	161.312917	Observer's specified target RA [deg]
dec_targ	-60.20125	Observer's specified target Dec [deg]
ra_nom	161.32670912637	Nominal RA [deg]
dec_nom	-60.196952089681	Nominal Dec [deg]
roll_nom	14.720650559401	Nominal Roll [deg]
revision	2	Processing version of data
ontime	19742.592332363	Sum of GTIs [s]
livetime	19492.599740689	Livetime [s]
ontime0	19742.469212353	Sum of GTIs [s]
ontime1	19742.510252357	Sum of GTIs [s]
ontime2	19742.55129236	Sum of GTIs [s]
ontime3	19742.592332363	Sum of GTIs [s]
ontime6	19742.67441237	Sum of GTIs [s]
ontime7	19742.633372366	Sum of GTIs [s]
l2events	171846	Number of level 2 events

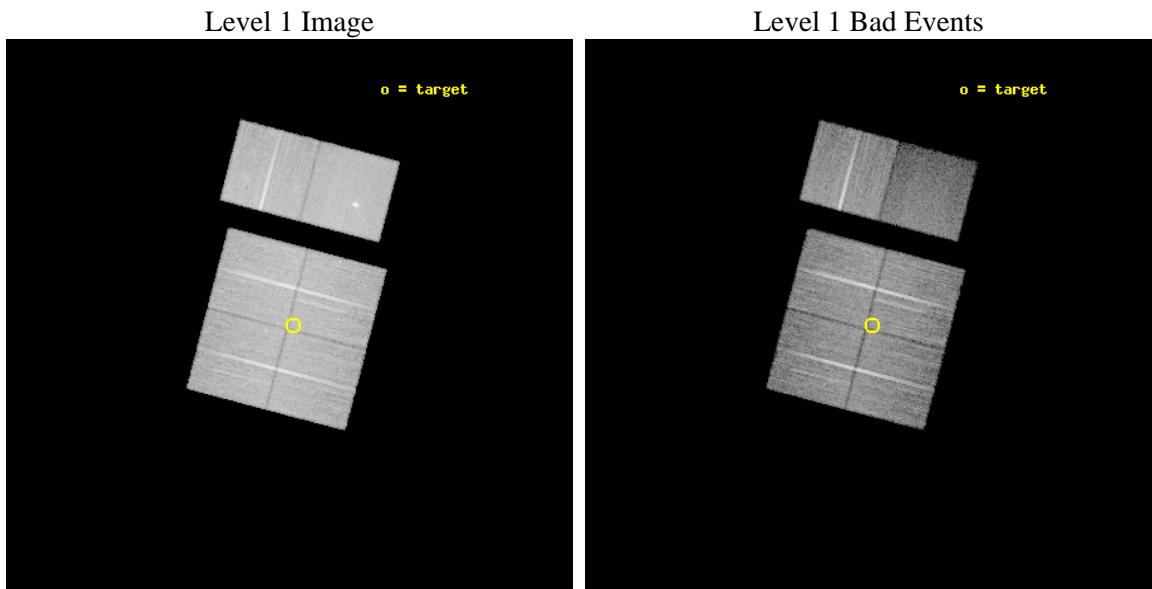




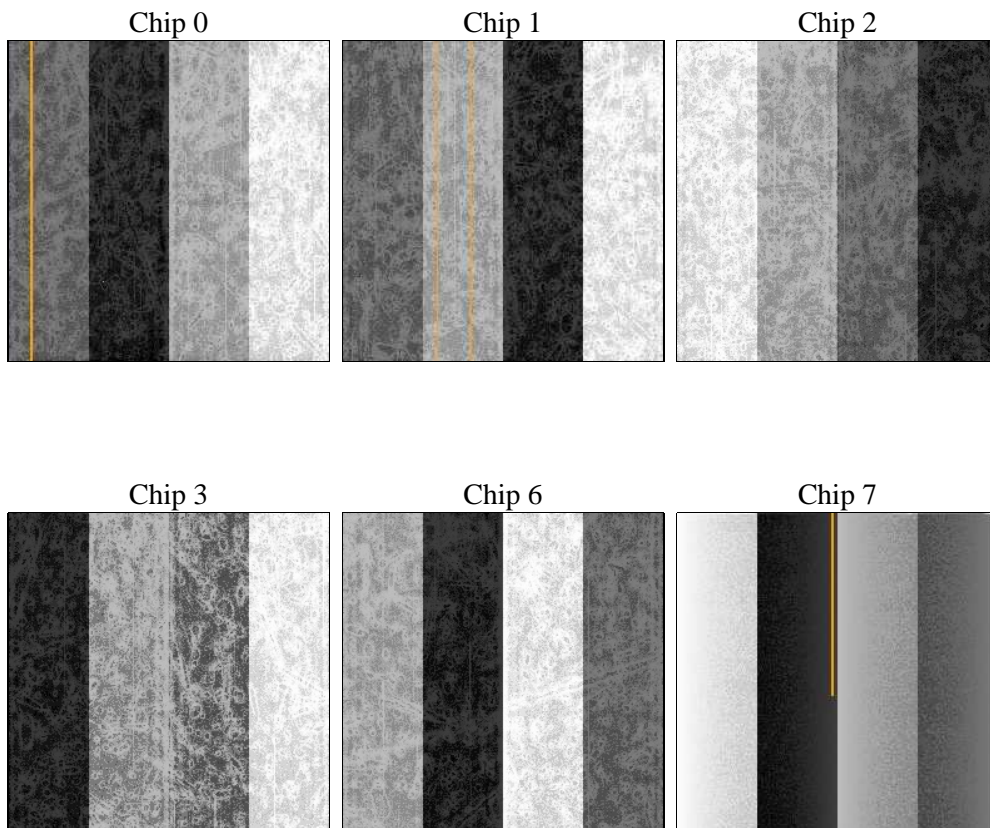
## 2 OBI

### 2.1 OBI

#### 2.1.1 Images



#### 2.1.2 Bias



### 2.1.3 Parameters

obi_num	0	Obi number	sched_exp_time	19700.000000	[s] Scheduled observation exposure time
ascdsver	8.4.4	Processing system revision	ontime	19742.592332363	Sum of GTIs [s]
caldsver	4.4.9	&#160	ontime0	19742.469212353	Sum of GTIs [s]
date	2012-05-09T18:43:24	Date and time of file creation	ontime1	19742.510252357	Sum of GTIs [s]
revision	2	Processing version of data	ontime2	19742.55129236	Sum of GTIs [s]
			ontime3	19742.592332363	Sum of GTIs [s]
			ontime6	19742.67441237	Sum of GTIs [s]
			ontime7	19742.633372366	Sum of GTIs [s]
			l1events	897598	Number of level 1 events

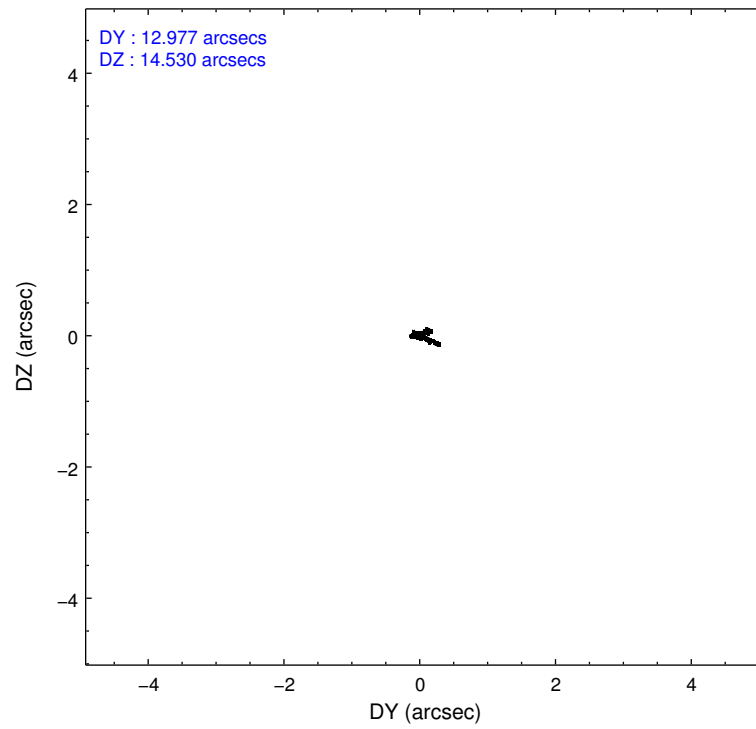
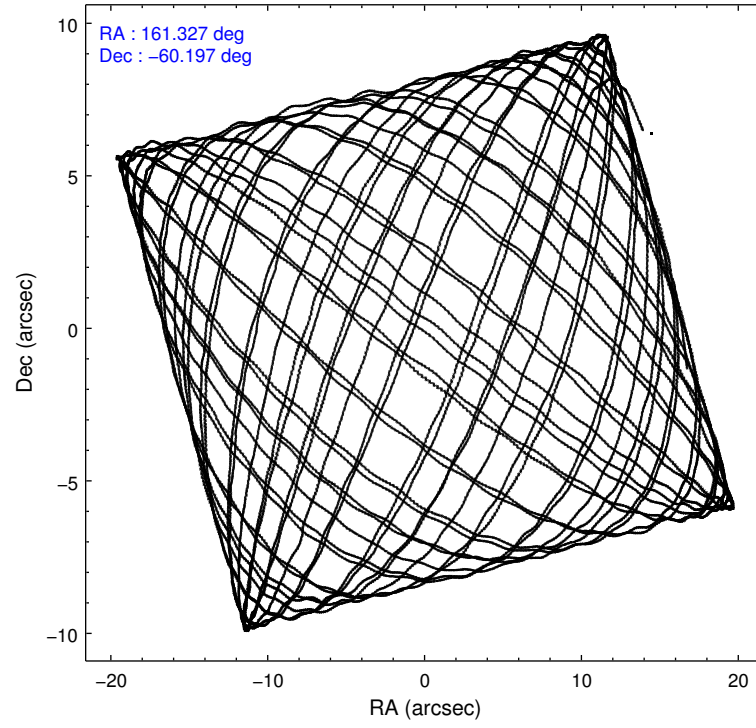
### 2.1.4 Events

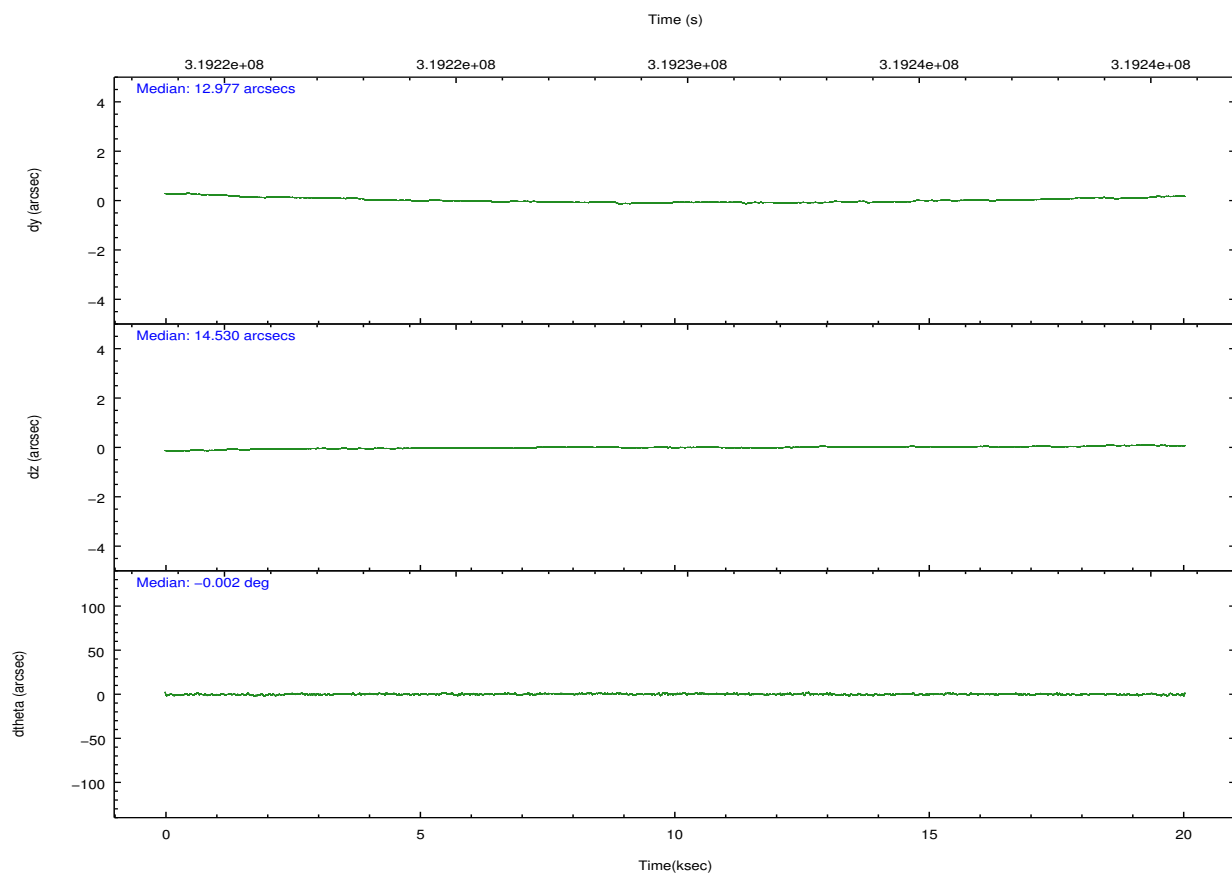
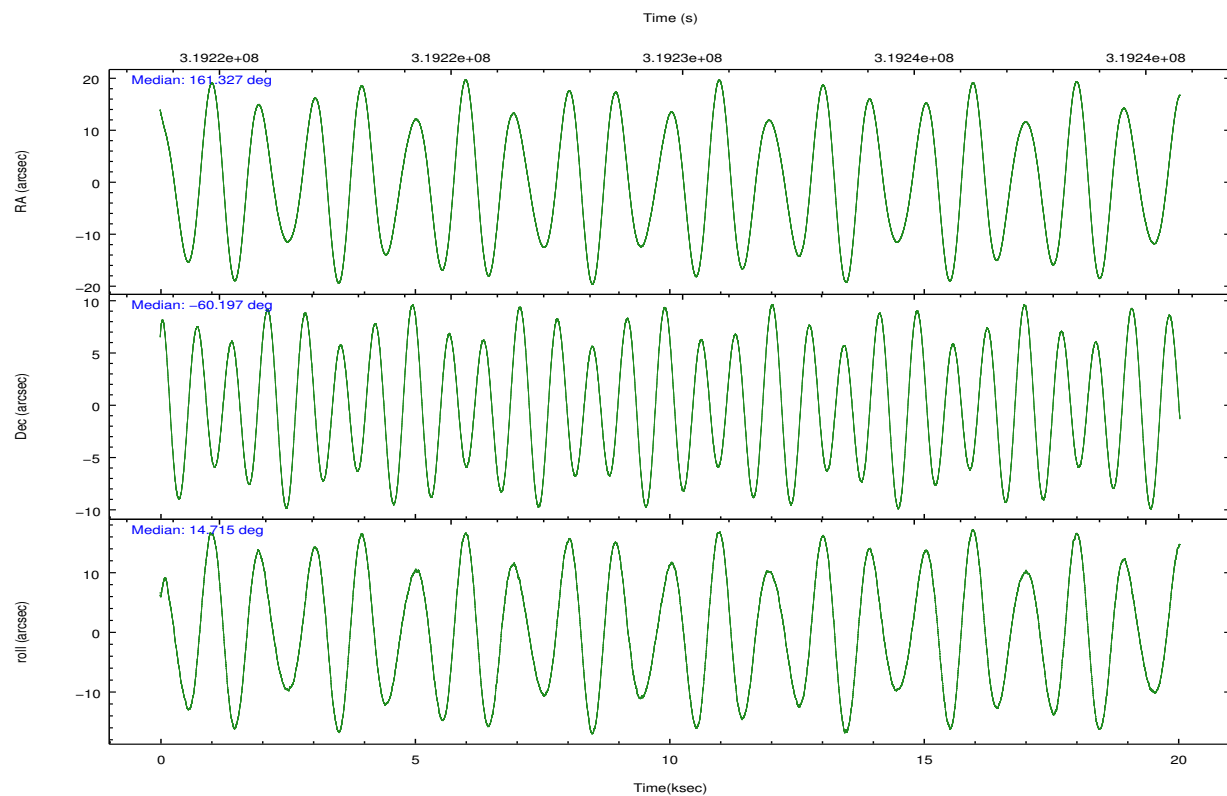
	ccd 0	ccd 1	ccd 2	ccd 3	ccd 6	ccd 7		ccd 0	ccd 1	ccd 2	ccd 3	ccd 6	ccd 7
level 1 events	135090	133339	158808	147683	158749	163929	grade 0 events	7151	6811	10078	8313	14047	15122
rejected events	118503	116469	139258	130341	133750	71100		5%	5%	6%	5%	8%	9%
rejected %	87%	87%	87%	88%	84%	43%	grade 1 events	83	82	126	91	124	201
								0%	0%	0%	0%	0%	0%
							grade 2 events	3709	3553	3812	3335	4136	20647
								2%	2%	2%	2%	2%	12%
							grade 3 events	1624	1765	1600	1609	1873	9431
								1%	1%	1%	1%	1%	5%
							grade 4 events	1570	1651	1626	1540	1752	9219
								1%	1%	1%	1%	1%	5%
							grade 5 events	4258	4714	3977	4975	5234	15158
								3%	3%	2%	3%	3%	9%
							grade 6 events	2536	3093	2435	2558	3195	38424
								1%	2%	1%	1%	2%	23%
							grade 7 events	114159	111670	135154	125262	128388	55727
								84%	83%	85%	84%	80%	33%

## 2.2 Compared Parameters

Parameter	Planned	Actual	Parameter	Planned	Actual
Instrument	ACIS	ACIS	Obspar format version number	7	7
Detector	ACIS-012367	ACIS-012367	Obspar file type	PREDICTED	ACTUAL
Grating	NONE	NONE	Obspar update status	NONE	UPDATED
Data mode	VFAINT	VFAINT	CCD I0 on	Y	Y
Observation mode	POINTING	POINTING	CCD I1 on	Y	Y
[deg] Pointing RA	161.287522	161.326709126371	CCD I2 on	Y	Y
[deg] Pointing Dec	-60.216383	-60.19695208968084	CCD I3 on	Y	Y
[deg] Pointing Roll	14.477957	14.72065055940142	CCD S0 on	N	N
[mm] SIM focus pos	-0.782348	-0.7809083437167272	CCD S1 on	N	N
[mm] SIM defocus	0	0.001439871863259334	CCD S2 on	O1	Y
[mm] SIM translation stage pos	-233.592463	-233.5874344608287	CCD S3 on	O2	Y
[mm] SIM translation stage offset	0	-0.005018542100998502	CCD S4 on	N	N
[s] Observation start time (MET)	319220037.184000	319218951.41909	CCD S5 on	N	N
Observation start date	2008-02-12T16:12:52	2008-02-12T15:55:51	Number of optional ACIS chips dropped	0	0
[s] Observation end time (MET)	319239737.184000	319240627.60764	On-chip summing requested	N	N
Observation end date	2008-02-12T21:41:12	2008-02-12T21:57:07	Subarray requested	NONE	NONE
Read mode	TIMED	TIMED	Alternating exposures requested	N	N
			[s] Primary exposure time	0.000000	3.2

## 2.3 Aspect



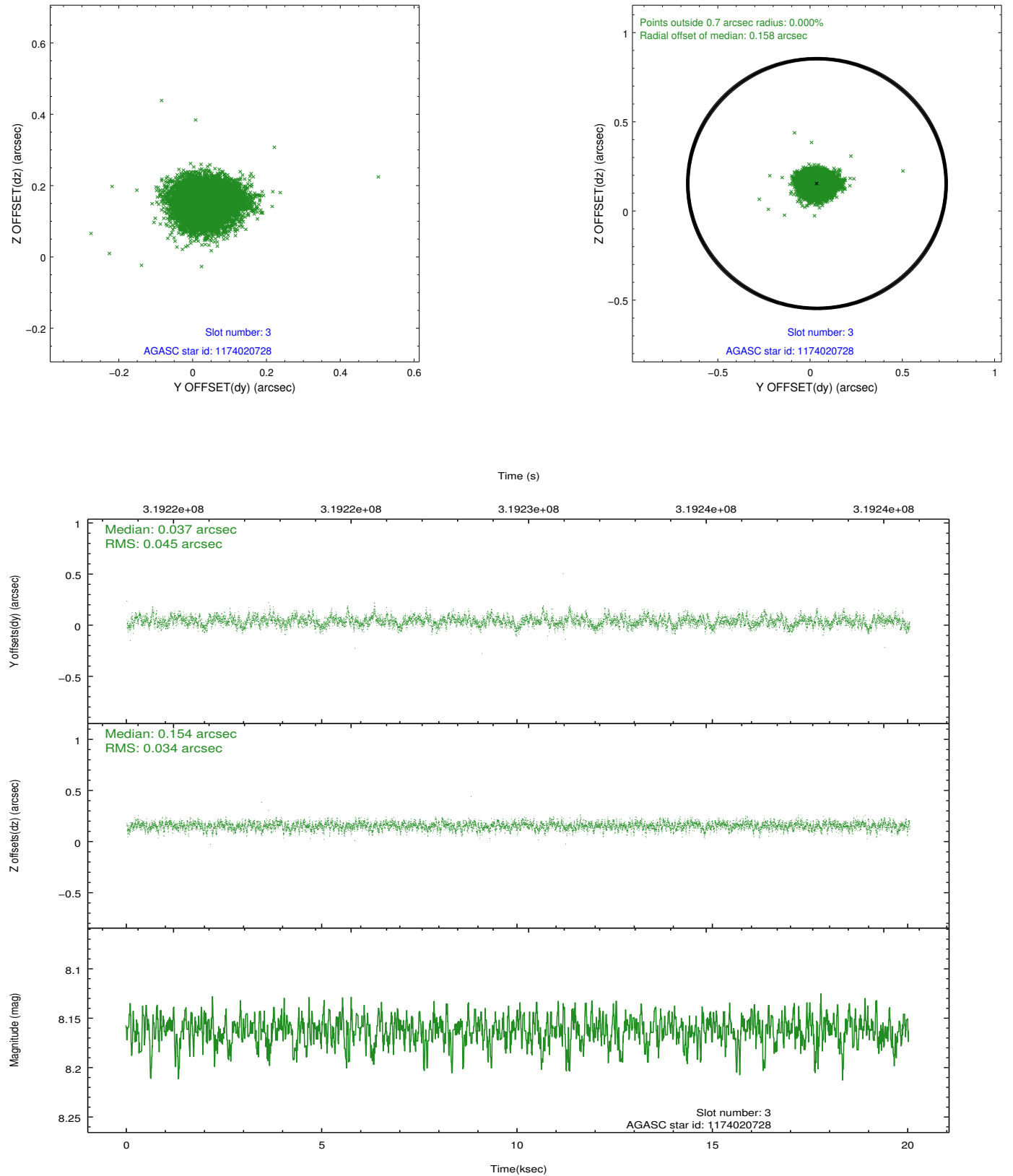


### Slot Statistics

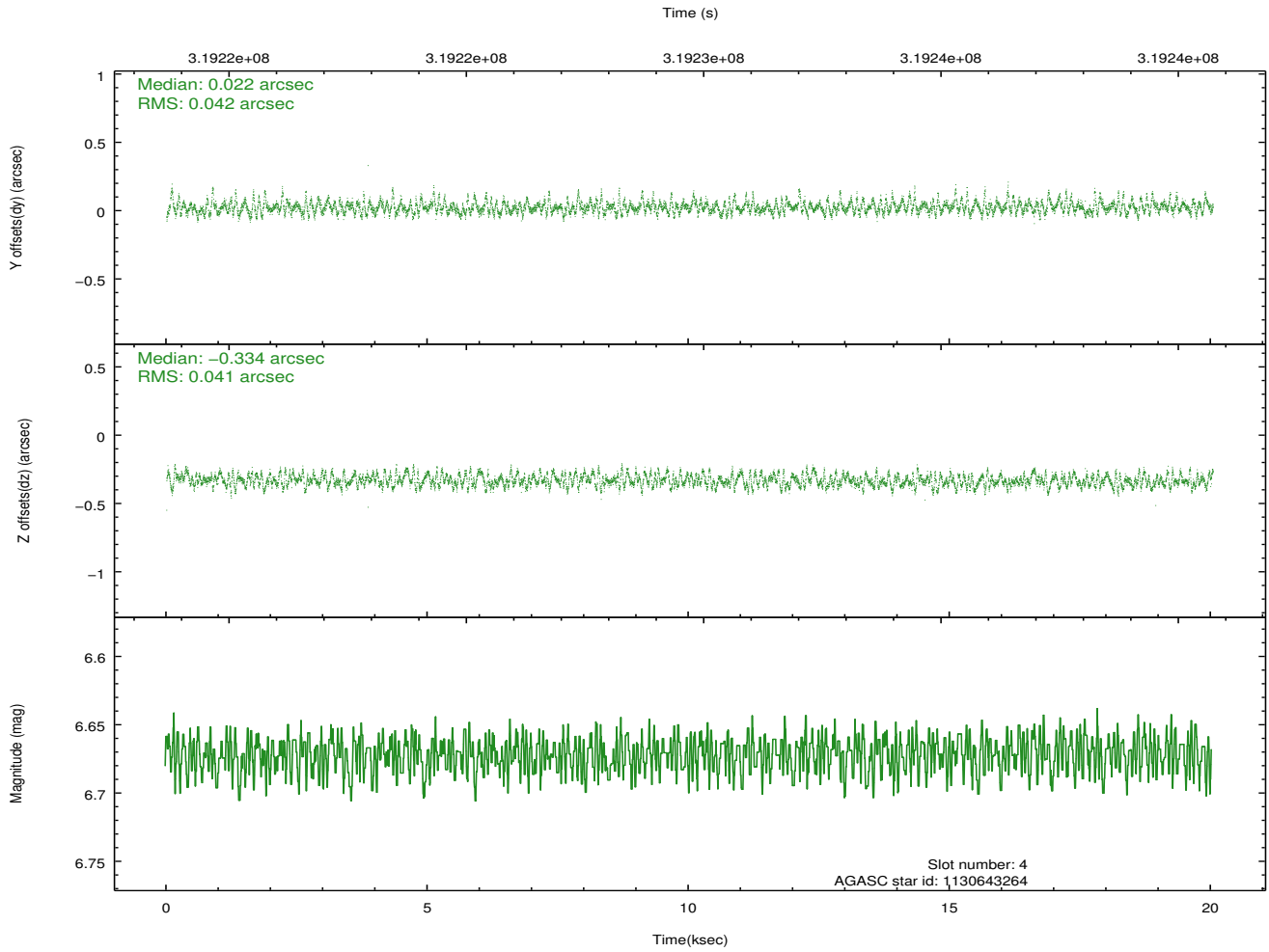
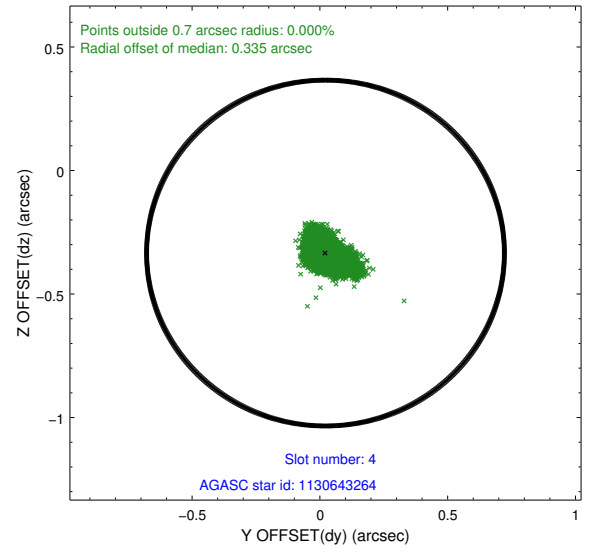
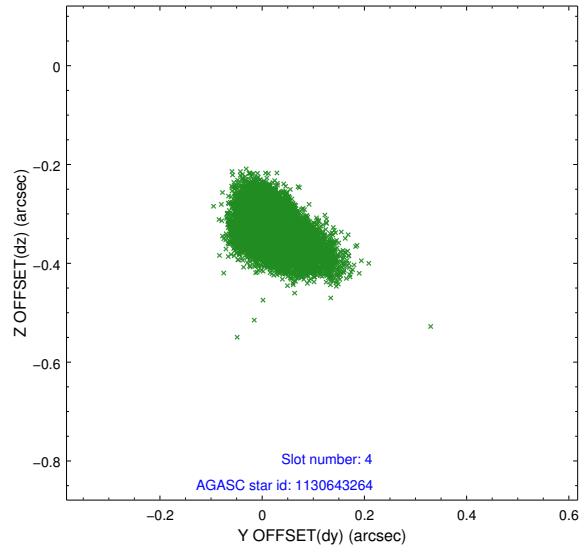
slot	status	id	mag	n_pts	med_dy	med_dz	dr1	dr2	ra	dec	mean_y	mean_z
0	FID	ACIS-I-1	7.23	4888	-0.022	0.020	0.010	0.017	0.000000	0.000000	926.49	-838.09
1	FID	ACIS-I-4	7.16	4888	0.170	0.020	0.009	0.016	0.000000	0.000000	2146.84	1061.61
2	FID	ACIS-I-5	7.21	4889	-0.247	0.030	0.008	0.015	0.000000	0.000000	-1821.48	1059.71
3	GUIDE	1174020728	8.16	9773	0.037	0.154	0.059	0.097	162.364714	-60.294672	1786.43	-767.99
4	GUIDE	1130643264	6.67	9776	0.022	-0.334	0.061	0.104	160.322990	-59.676912	-1214.95	2306.01
5	GUIDE	1130640672	8.29	9776	-0.036	-0.128	0.053	0.086	162.096044	-59.540805	2034.29	1977.78
6	GUIDE	1174030544	7.58	9777	-0.040	0.138	0.065	0.105	160.765344	-60.986885	-1576.71	-2460.94
7	GUIDE	1174012960	7.15	9771	0.013	0.168	0.058	0.087	160.855674	-60.332270	-849.97	-213.98

## 2.4 Star Slots

### 2.4.1 Slot 3

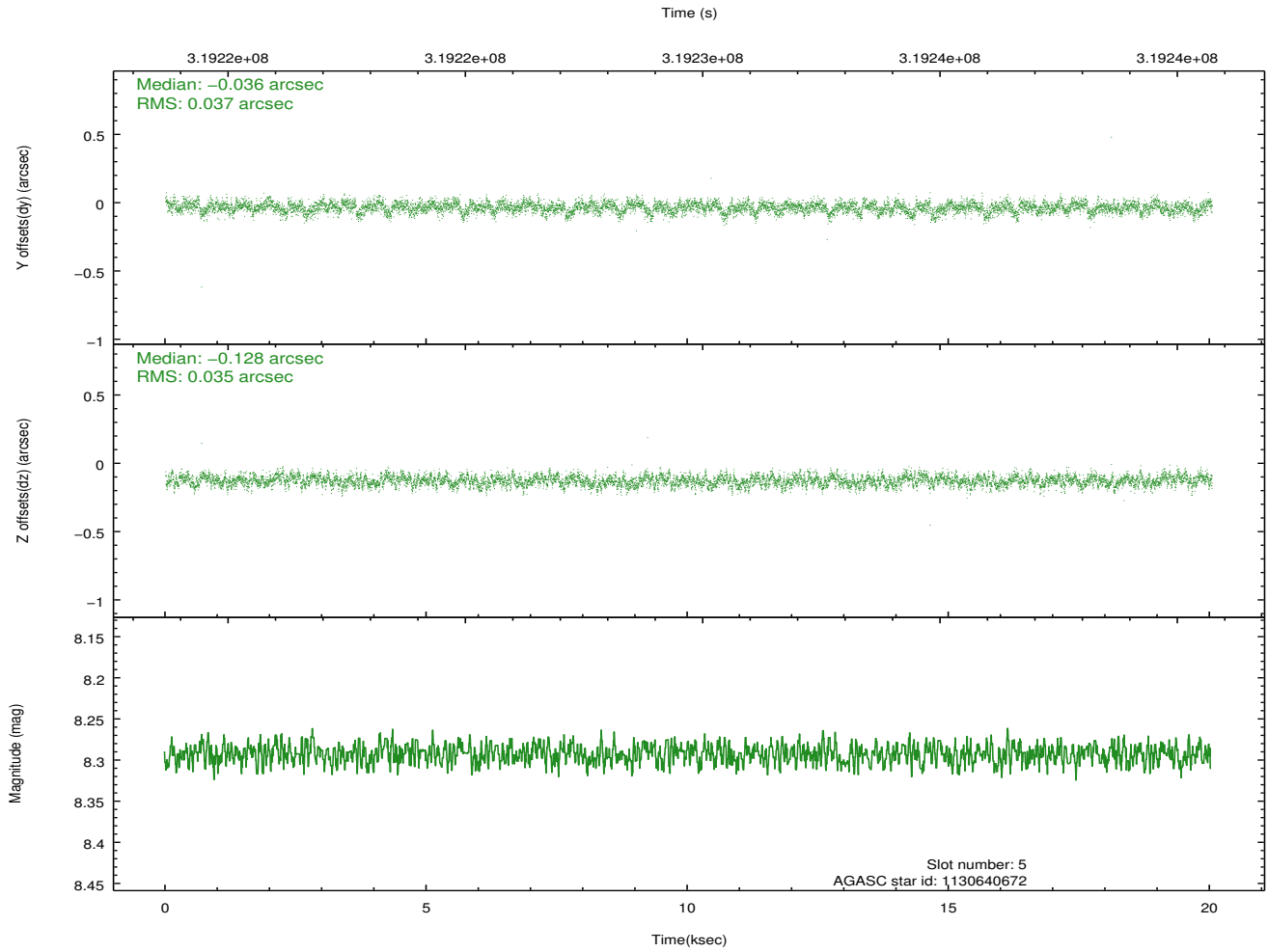
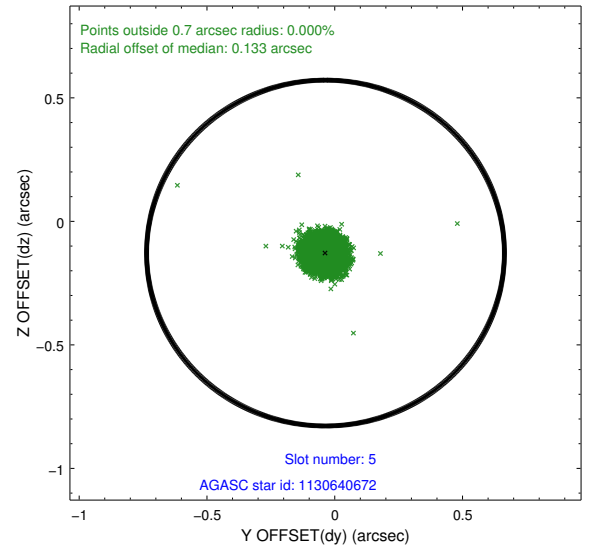
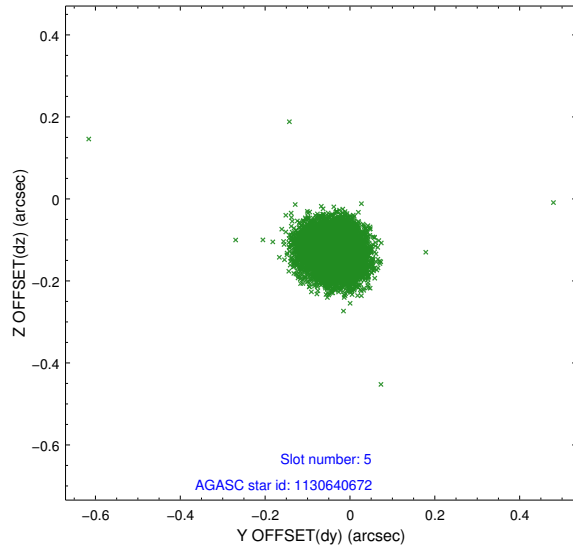


## 2.4.2 Slot 4

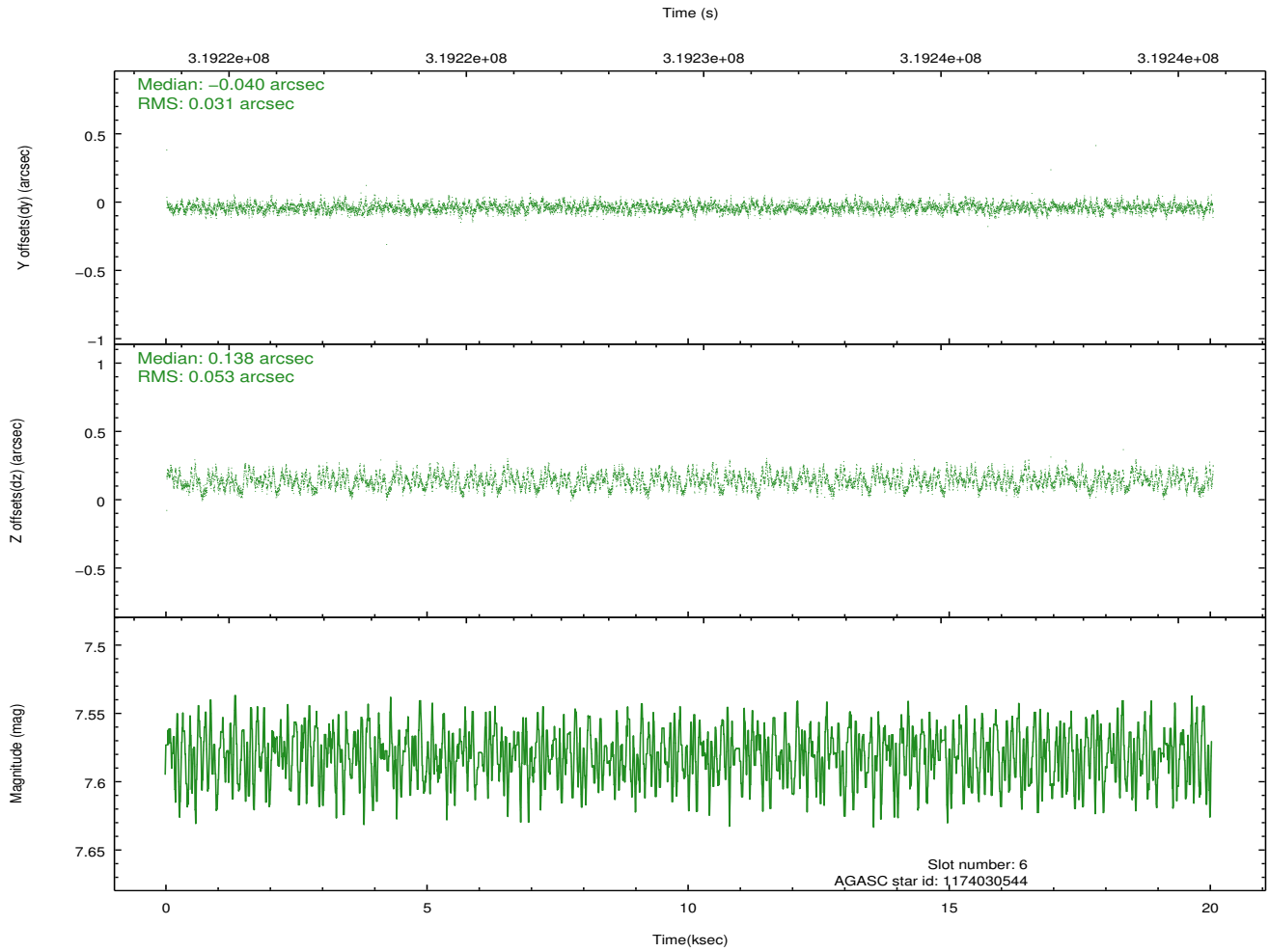
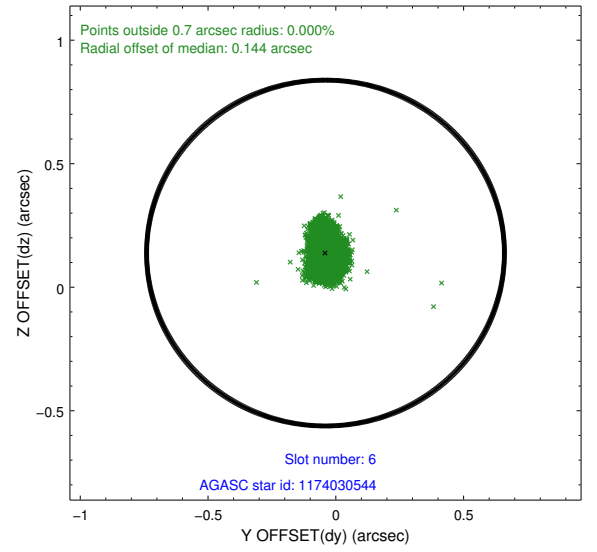
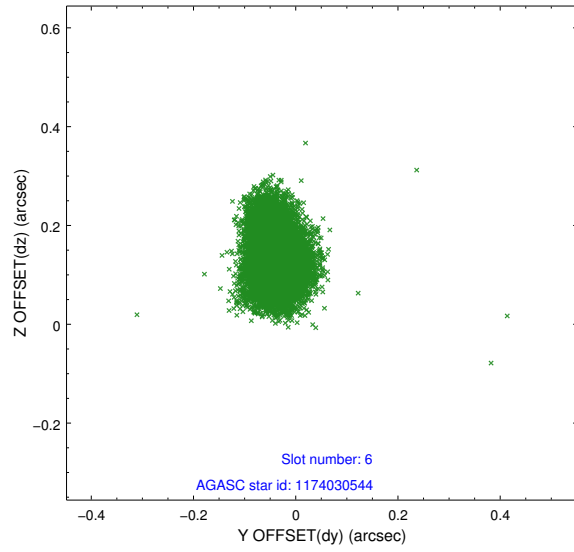




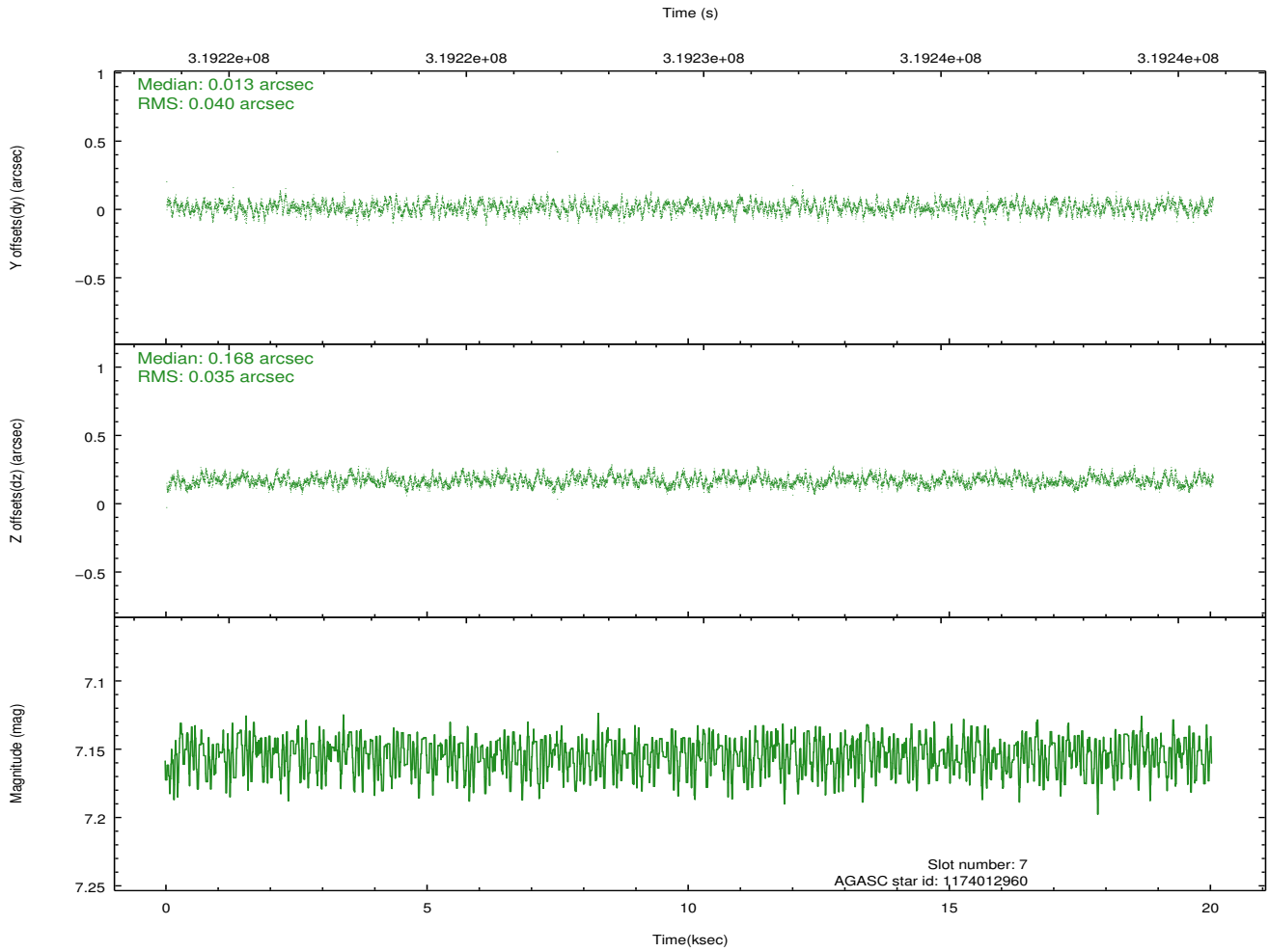
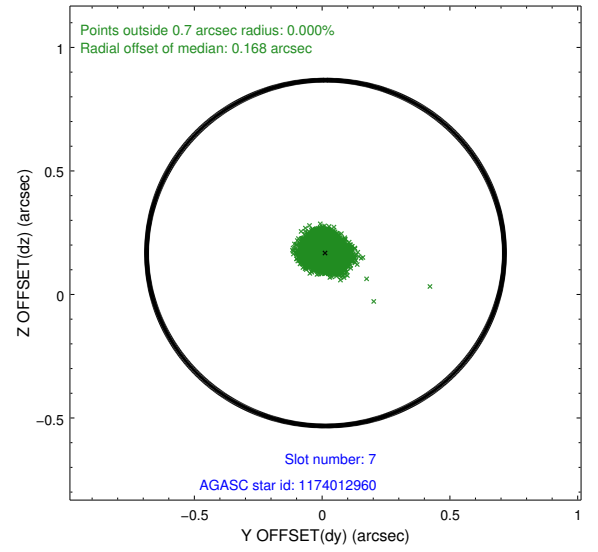
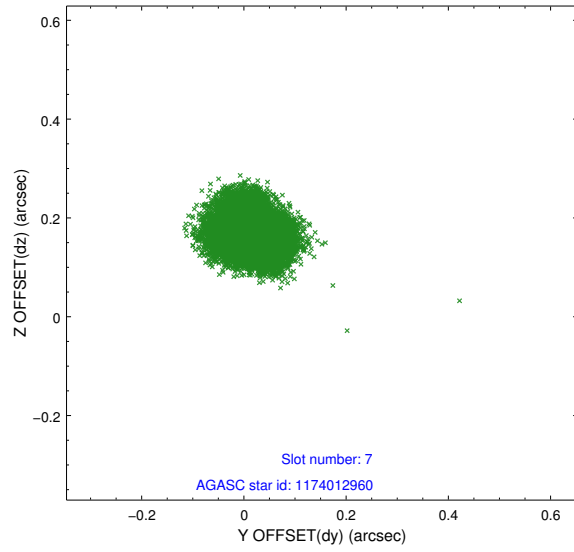
### 2.4.3 Slot 5



## 2.4.4 Slot 6

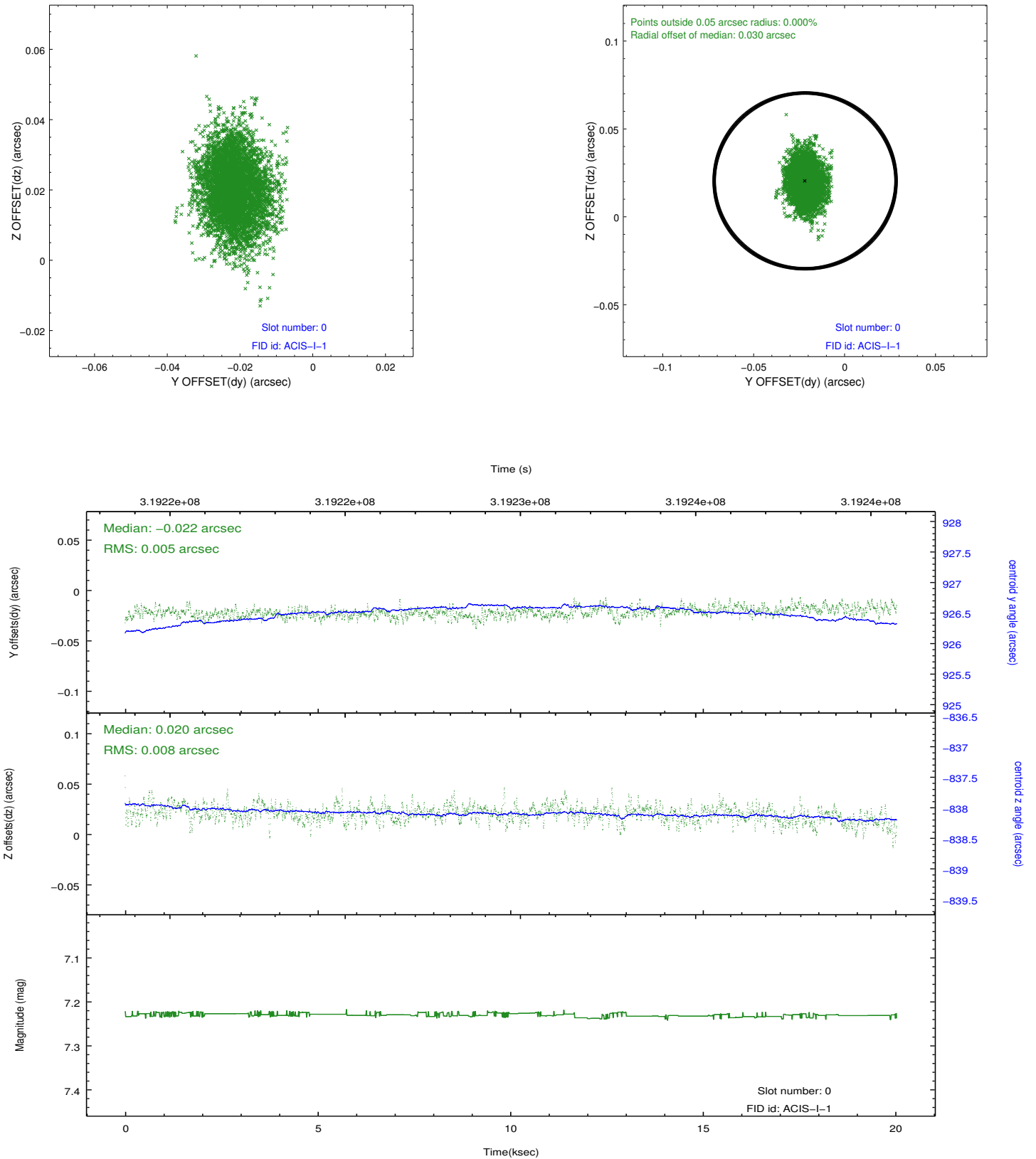


## 2.4.5 Slot 7

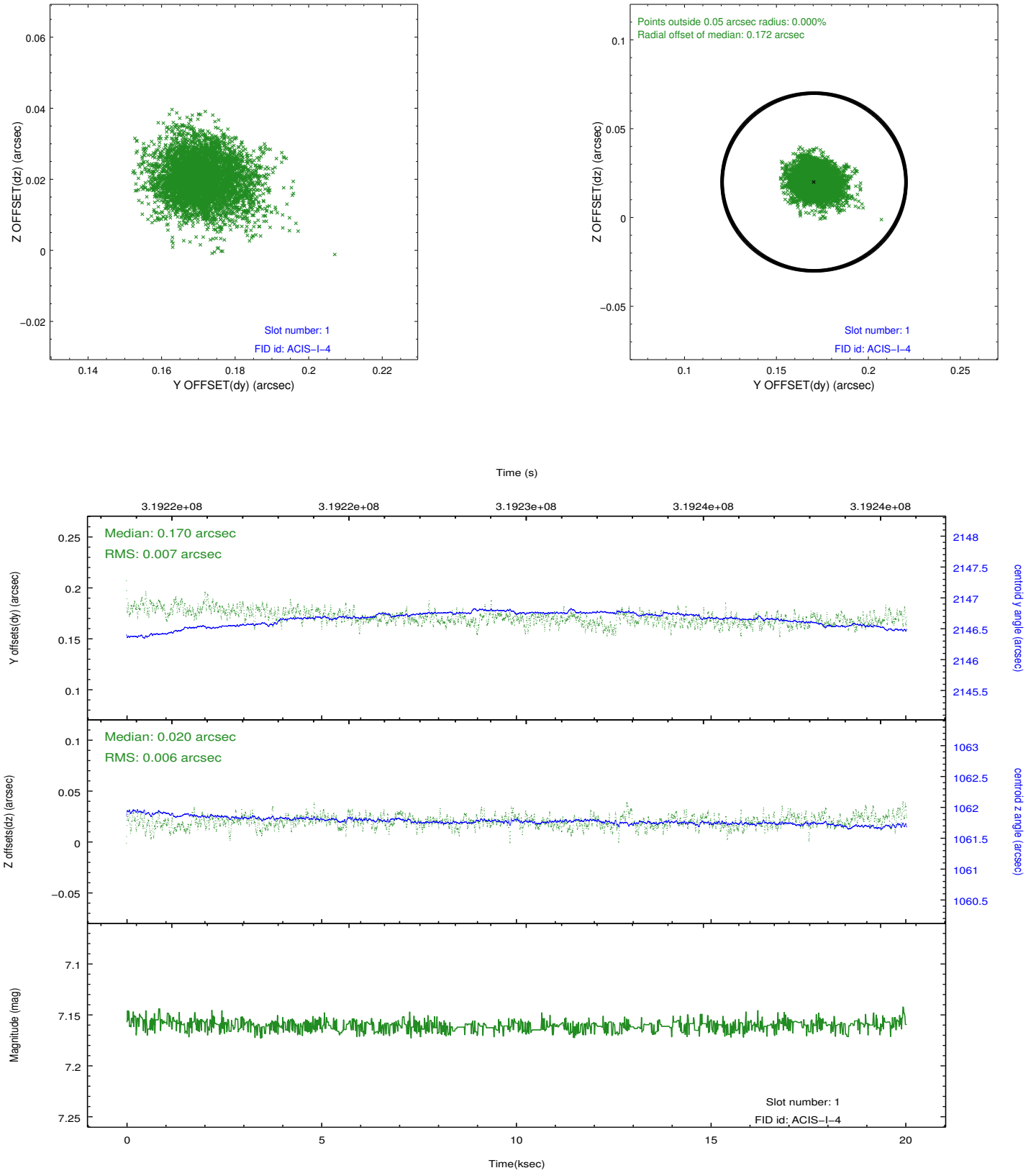


## 2.5 FID Slots

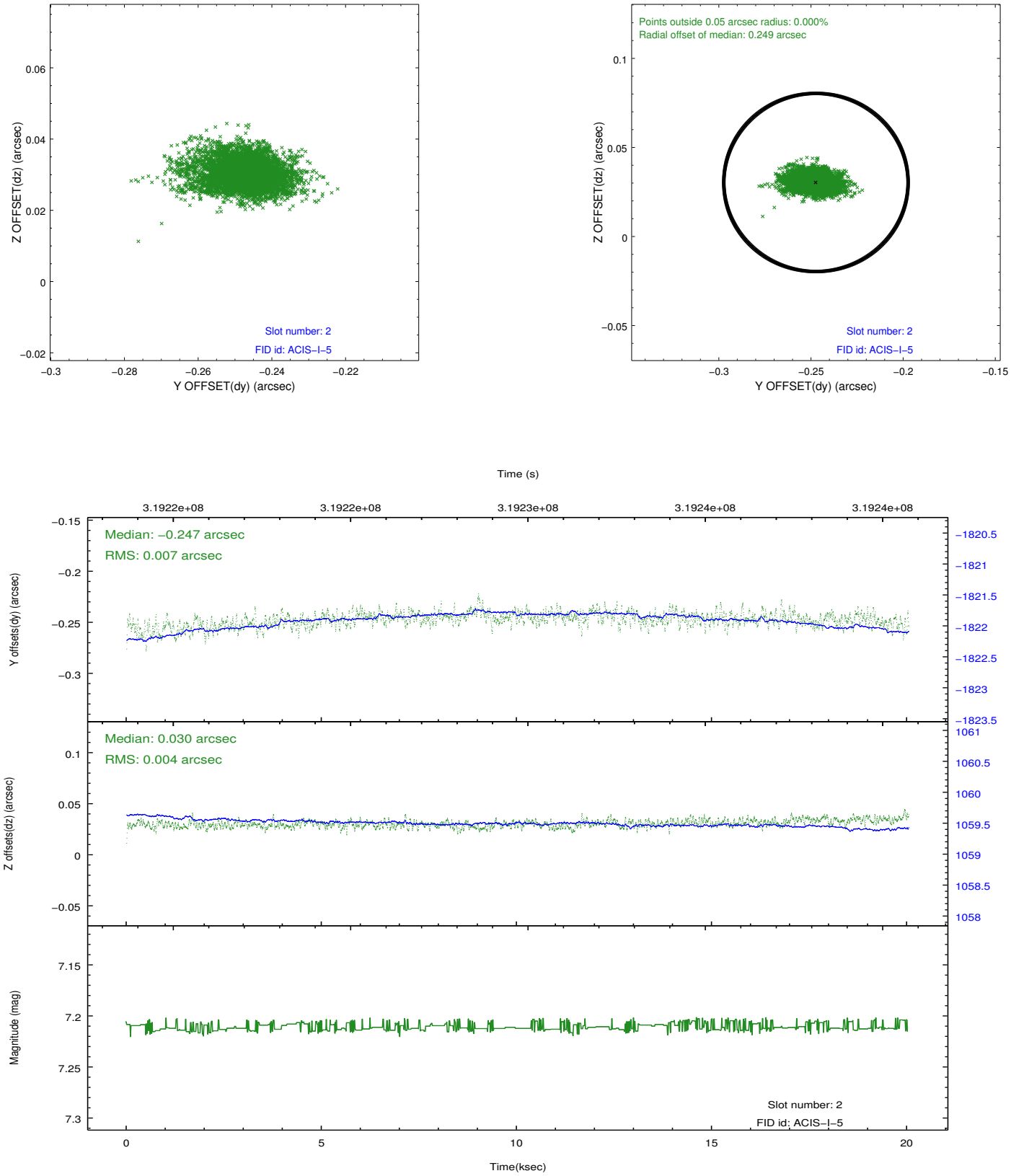
### 2.5.1 Slot 0



## 2.5.2 Slot 1



### 2.5.3 Slot 2



## A Summary

### A.1 Status

V&V Scientist	Beth Sundheim
V&V Date (YYYY-MM-DD)	2012.05.11
V&V Edition	1
V&V Disposition and Status	OK
V&V Charge Time	19.7439999

### A.2 Comments