

V&V Reference Report

L2 ASCDS Version : 8.4.4

Observation 8614 - L2 Version 2
Chandra X-Ray Center

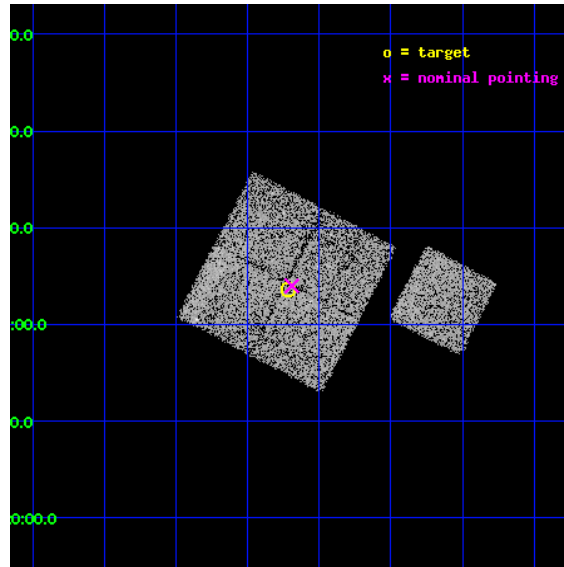
L2 Processing Date : May 19 2012

Contents

1	Front	2
2	OBI	3
2.1	OBI	3
2.1.1	Images	3
2.1.2	Bias	3
2.1.3	Parameters	4
2.1.4	Events	4
2.2	Compared Parameters	5
2.3	Aspect	6
2.4	Star Slots	9
2.4.1	Slot 3	9
2.4.2	Slot 4	10
2.4.3	Slot 5	11
2.4.4	Slot 6	12
2.4.5	Slot 7	13
2.5	FID Slots	14
2.5.1	Slot 0	14
2.5.2	Slot 1	15
2.5.3	Slot 2	16
A	Summary	17
A.1	Status	17
A.2	Comments	17

1 Front

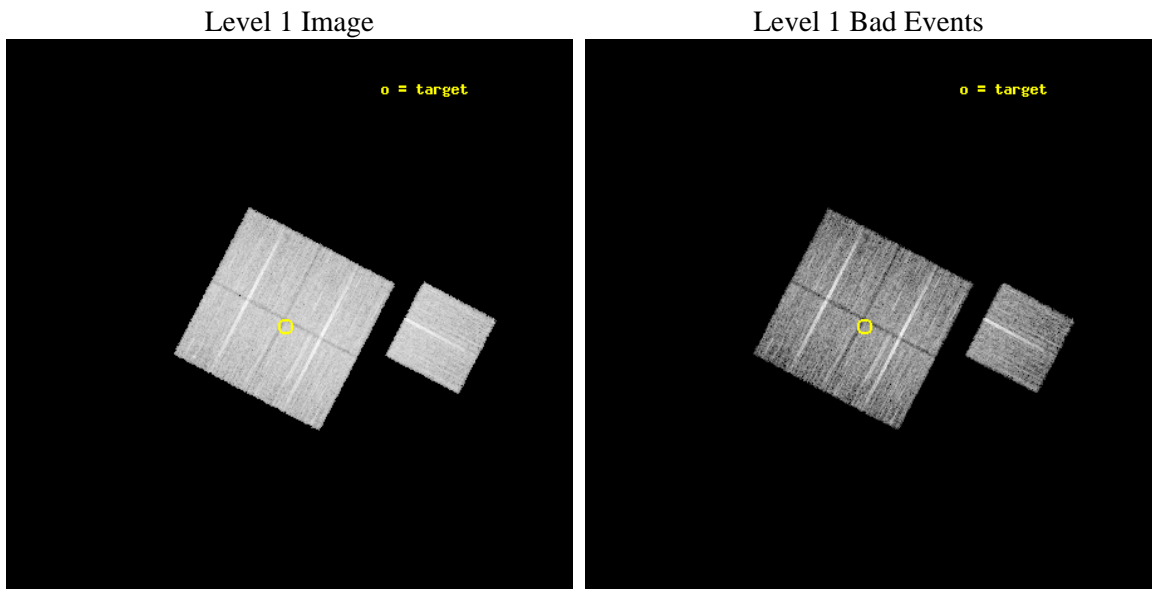
seq_num	900751	Sequence number
obs_id	8614	Observation id
title	Chandra Observations of the DEEP2 Fields	Proposal title
observer	Dr. Stephen Murray	Principal investigator
object	DEEP2 Field 3	Source name
dtcycle	0	
cycle	P	events from which exps? Prim/Second/Both
ra_targ	352.80328	Observer's specified target RA [deg]
dec_targ	0.060849	Observer's specified target Dec [deg]
ra_nom	352.79755658438	Nominal RA [deg]
dec_nom	0.066570125617833	Nominal Dec [deg]
roll_nom	117.50869629901	Nominal Roll [deg]
revision	2	Processing version of data
ontime	8955.9000688791	Sum of GTIs [s]
livetime	8838.8846412415	Livetime [s]
ontime0	8955.9000688791	Sum of GTIs [s]
ontime1	8955.9000688791	Sum of GTIs [s]
ontime2	8955.9000688791	Sum of GTIs [s]
ontime3	8955.9000688791	Sum of GTIs [s]
ontime6	8955.9000688791	Sum of GTIs [s]
l2events	31117	Number of level 2 events



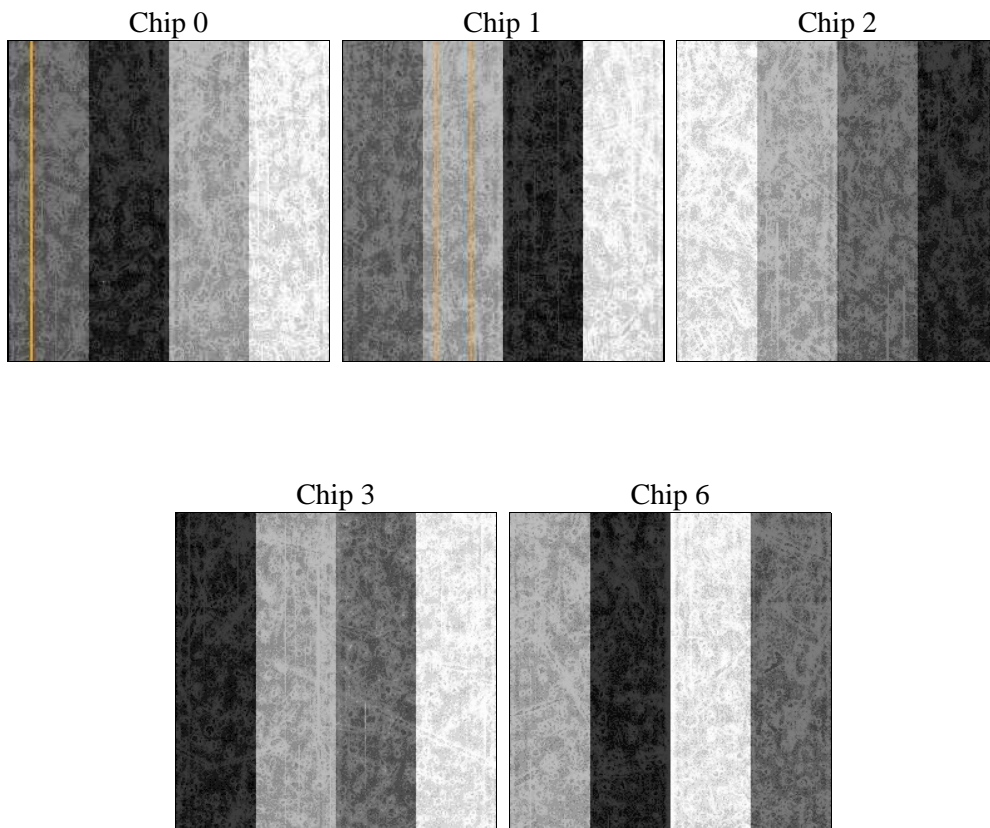
2 OBI

2.1 OBI

2.1.1 Images



2.1.2 Bias



2.1.3 Parameters

obi_num	0	Obi number	sched_exp_time	8771.000000	[s] Scheduled observation exposure time
ascdsver	8.4.4	Processing system revision	ontime	8955.9000688791	Sum of GTIs [s]
caldsver	4.4.9	 	ontime0	8955.9000688791	Sum of GTIs [s]
date	2012-05-19T01:57:43	Date and time of file creation	ontime1	8955.9000688791	Sum of GTIs [s]
revision	2	Processing version of data	ontime2	8955.9000688791	Sum of GTIs [s]
			ontime3	8955.9000688791	Sum of GTIs [s]
			ontime6	8955.9000688791	Sum of GTIs [s]
			l1events	373038	Number of level 1 events

2.1.4 Events

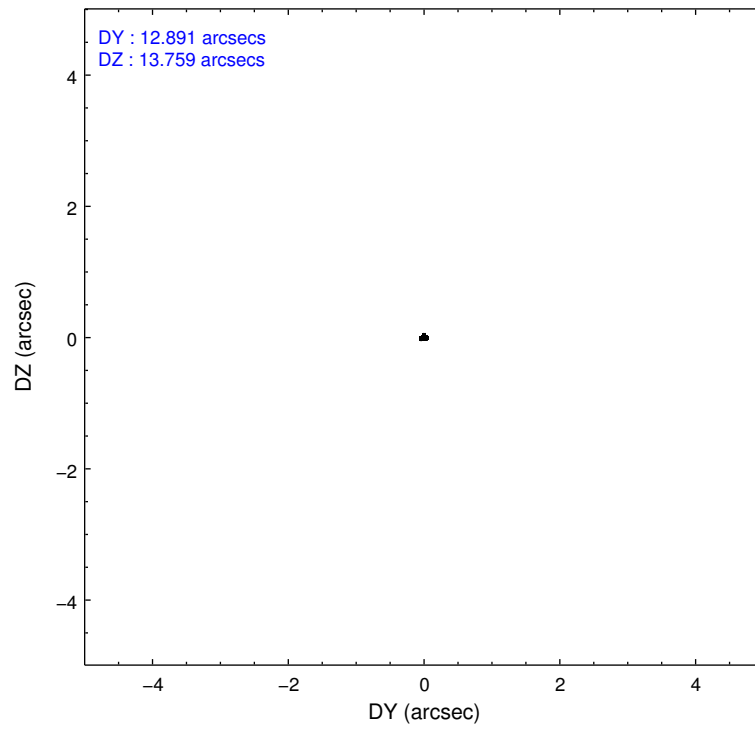
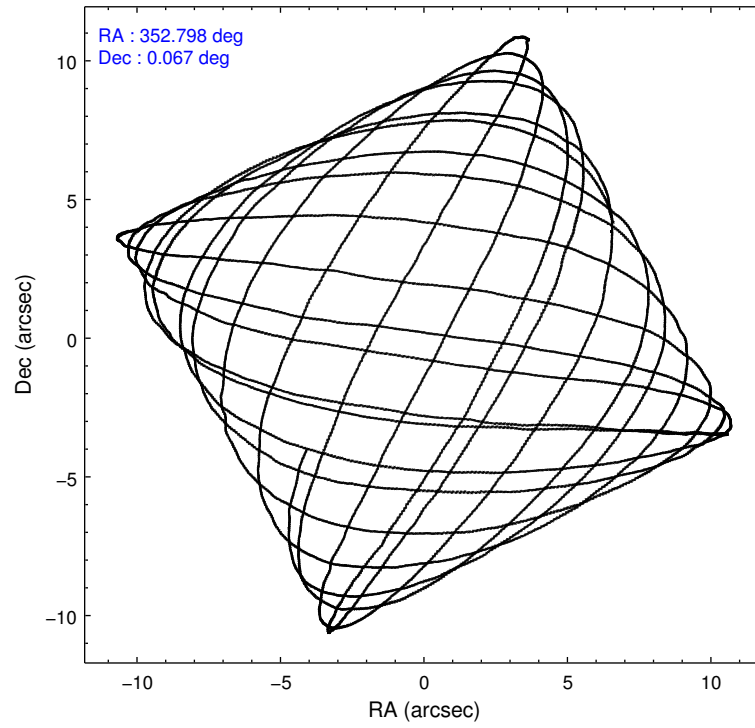
	ccd 0	ccd 1	ccd 2	ccd 3	ccd 6
level 1 events	71142	71694	78323	77004	74875
rejected events	63764	63271	71146	69978	67394
rejected %	89%	88%	90%	90%	90%

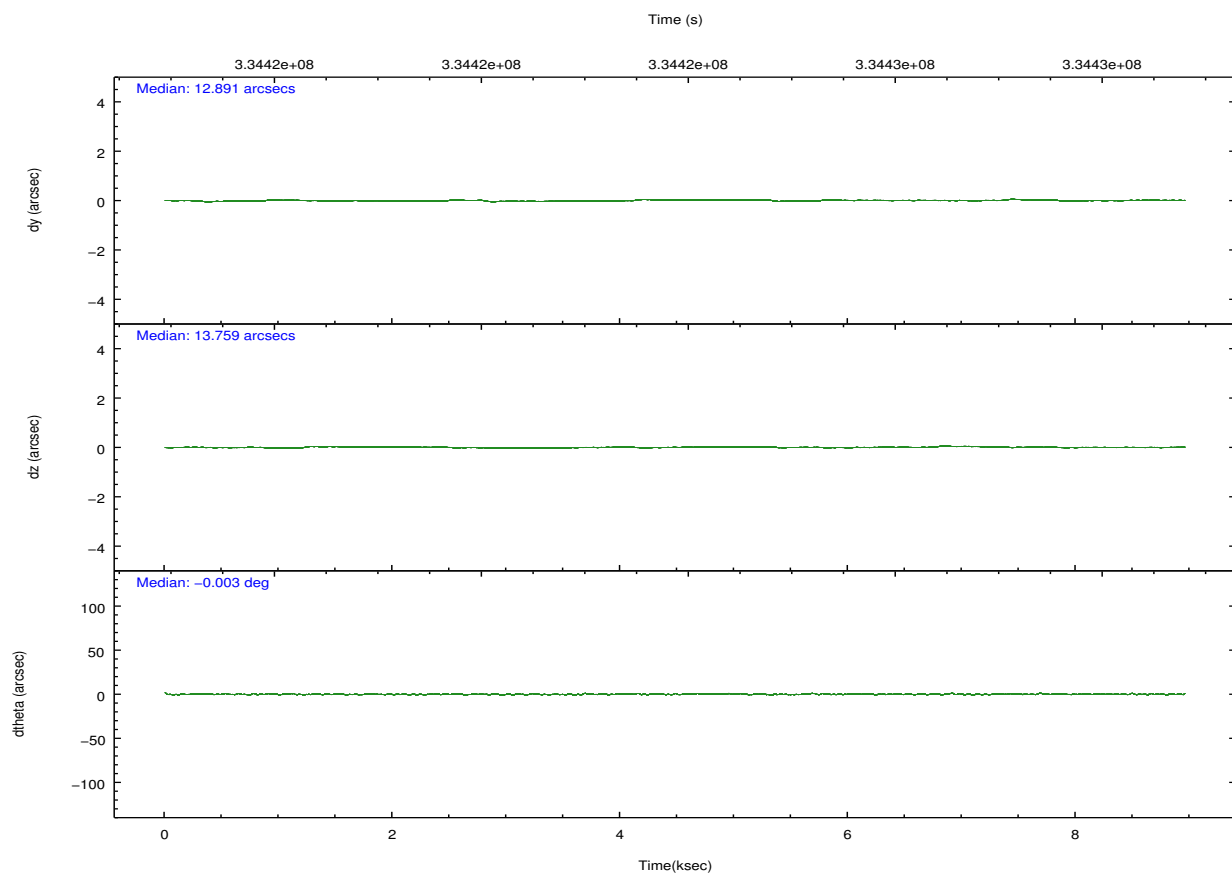
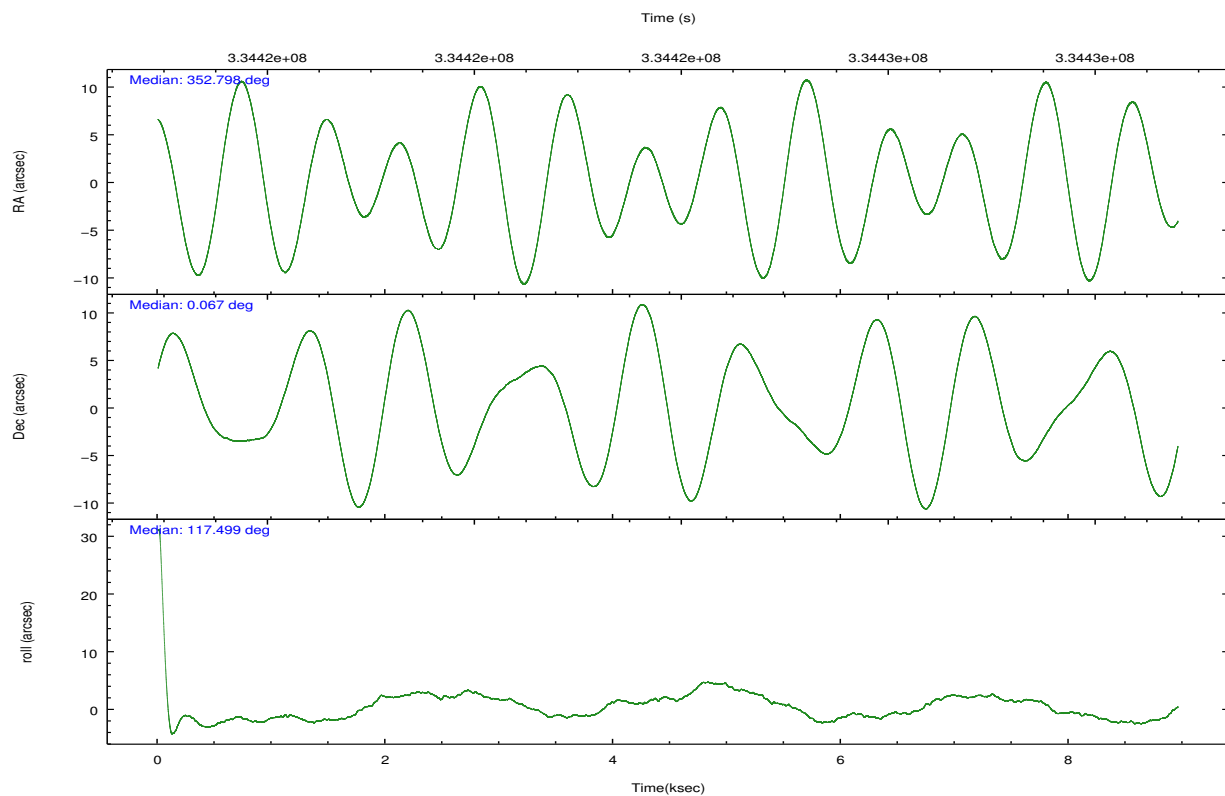
	ccd 0	ccd 1	ccd 2	ccd 3	ccd 6
grade 0 events	2673	3081	2690	2613	2690
	3%	4%	3%	3%	3%
grade 1 events	43	62	42	61	24
	0%	0%	0%	0%	0%
grade 2 events	1833	1993	1790	1545	1728
	2%	2%	2%	2%	2%
grade 3 events	863	944	806	847	809
	1%	1%	1%	1%	1%
grade 4 events	780	961	836	804	846
	1%	1%	1%	1%	1%
grade 5 events	2730	2949	2518	3246	3114
	3%	4%	3%	4%	4%
grade 6 events	1534	1751	1325	1470	1688
	2%	2%	1%	1%	2%
grade 7 events	60686	59953	68316	66418	63976
	85%	83%	87%	86%	85%

2.2 Compared Parameters

Parameter	Planned	Actual	Parameter	Planned	Actual
Instrument	ACIS	ACIS	Obspar format version number	7	7
Detector	ACIS-01236	ACIS-01236	Obspar file type	PREDICTED	ACTUAL
Grating	NONE	NONE	Obspar update status	NONE	UPDATED
Data mode	VFAINT	VFAINT	CCD I0 on	Y	Y
Observation mode	POINTING	POINTING	CCD I1 on	Y	Y
[deg] Pointing RA	352.820840	352.7975565843752	CCD I2 on	Y	Y
[deg] Pointing Dec	0.051904	0.06657012561783264	CCD I3 on	Y	Y
[deg] Pointing Roll	117.299982	117.508696299008	CCD S0 on	N	N
[mm] SIM focus pos	-0.782348	-0.7809083437167272	CCD S1 on	N	N
[mm] SIM defocus	0	0.001439871863259334	CCD S2 on	O1	Y
[mm] SIM translation stage pos	-233.592463	-233.5874344608287	CCD S3 on	N	N
[mm] SIM translation stage offset	0	-0.005018542100998502	CCD S4 on	N	N
[s] Observation start time (MET)	334419586.184000	334419210.67292	CCD S5 on	N	N
Observation start date	2008-08-06T14:18:41	2008-08-06T14:13:30	Number of optional ACIS chips dropped	0	0
[s] Observation end time (MET)	334428357.184000	334428508.96088	On-chip summing requested	N	N
Observation end date	2008-08-06T16:44:52	2008-08-06T16:48:28	Subarray requested	NONE	NONE
Read mode	TIMED	TIMED	Alternating exposures requested	N	N
			[s] Primary exposure time	0.000000	3.1

2.3 Aspect



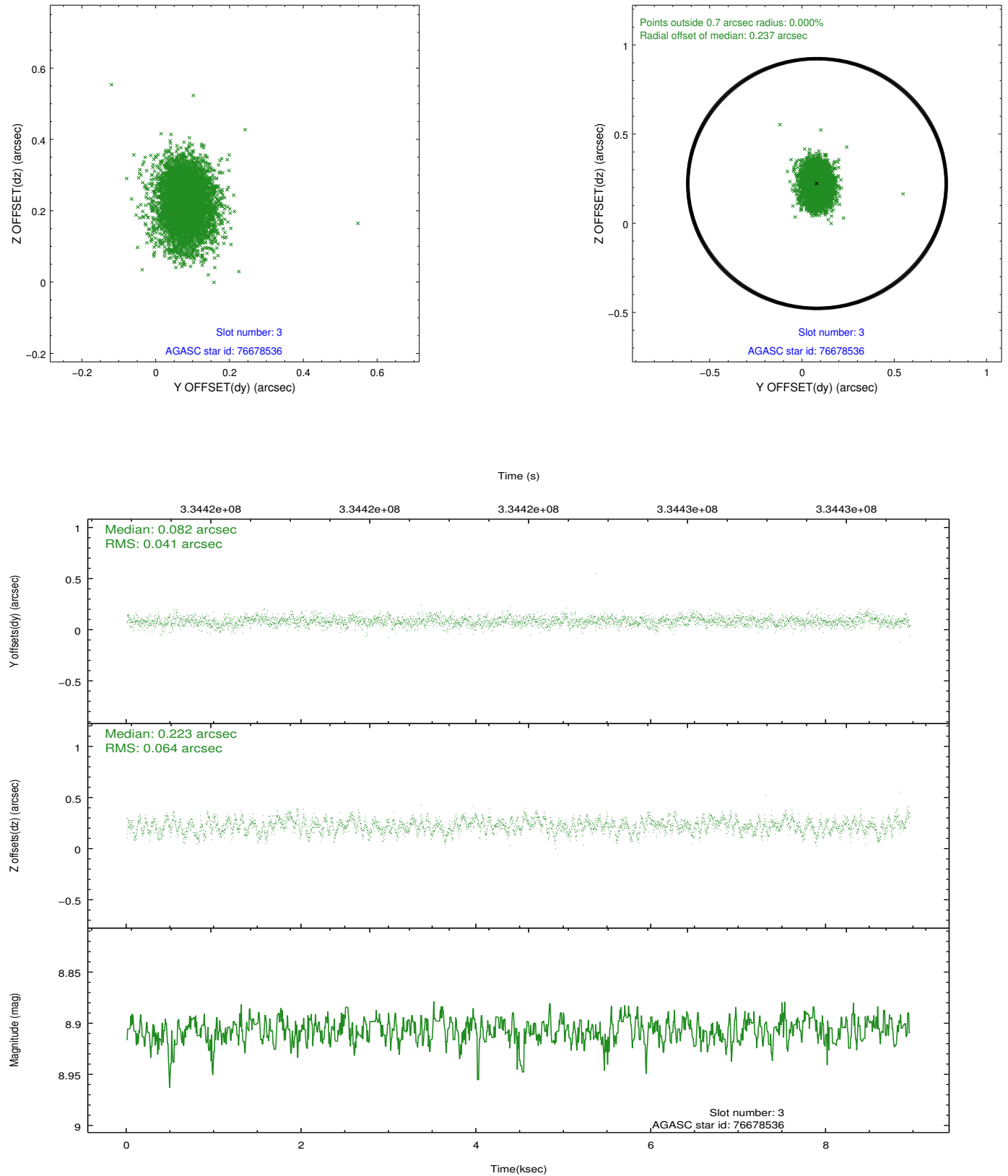


Slot Statistics

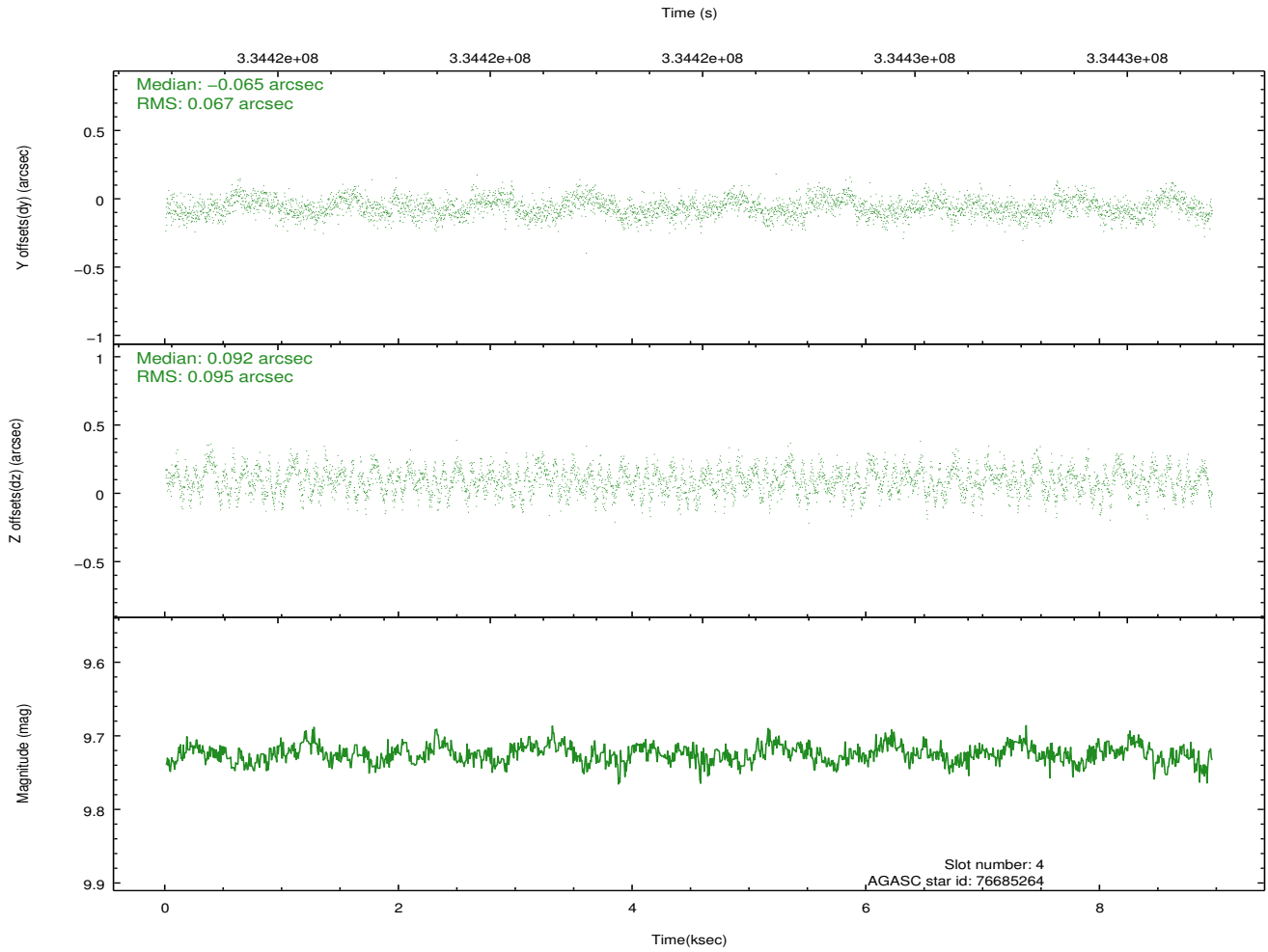
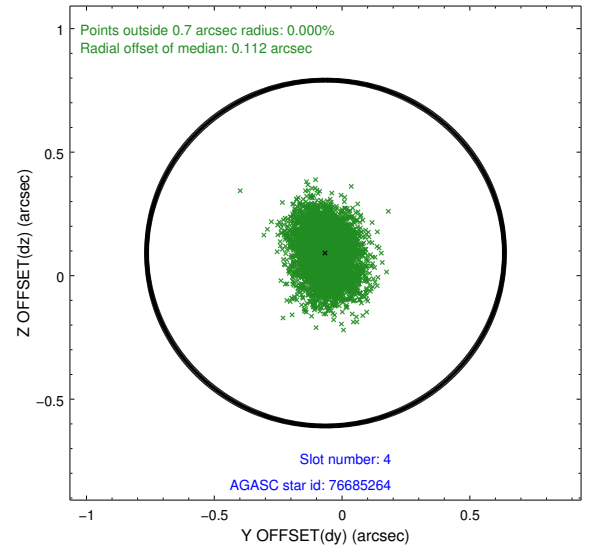
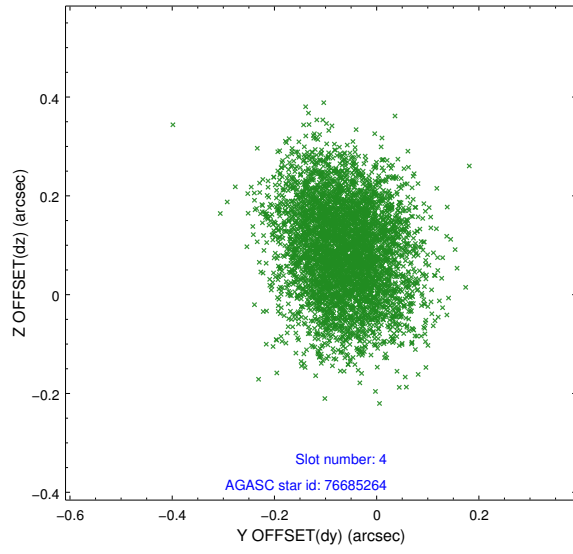
slot	status	id	mag	n_pts	med_dy	med_dz	dr1	dr2	ra	dec	mean_y	mean_z
0	FID	ACIS-I-1	7.07	2185	0.005	0.049	0.006	0.011	0.000000	0.000000	926.64	-837.27
1	FID	ACIS-I-5	7.05	2185	-0.167	0.031	0.006	0.010	0.000000	0.000000	-1821.32	1059.87
2	FID	ACIS-I-6	7.06	2185	0.071	-0.010	0.006	0.010	0.000000	0.000000	391.56	1705.04
3	GUIDE	76678536	8.91	4365	0.082	0.223	0.080	0.134	353.237558	0.180446	-276.45	-1545.21
4	GUIDE	76685264	9.72	4362	-0.065	0.092	0.125	0.201	353.301878	0.237362	-200.54	-1845.25
5	GUIDE	687347656	9.58	4359	-0.225	-0.274	0.111	0.177	352.228641	-0.041094	680.00	2047.76
6	GUIDE	688264664	7.87	4370	0.150	-0.021	0.053	0.085	352.757580	-0.596012	-1968.02	1272.37
7	GUIDE	688265896	9.18	4365	0.055	-0.016	0.083	0.135	352.587516	-0.177872	-350.32	1126.06

2.4 Star Slots

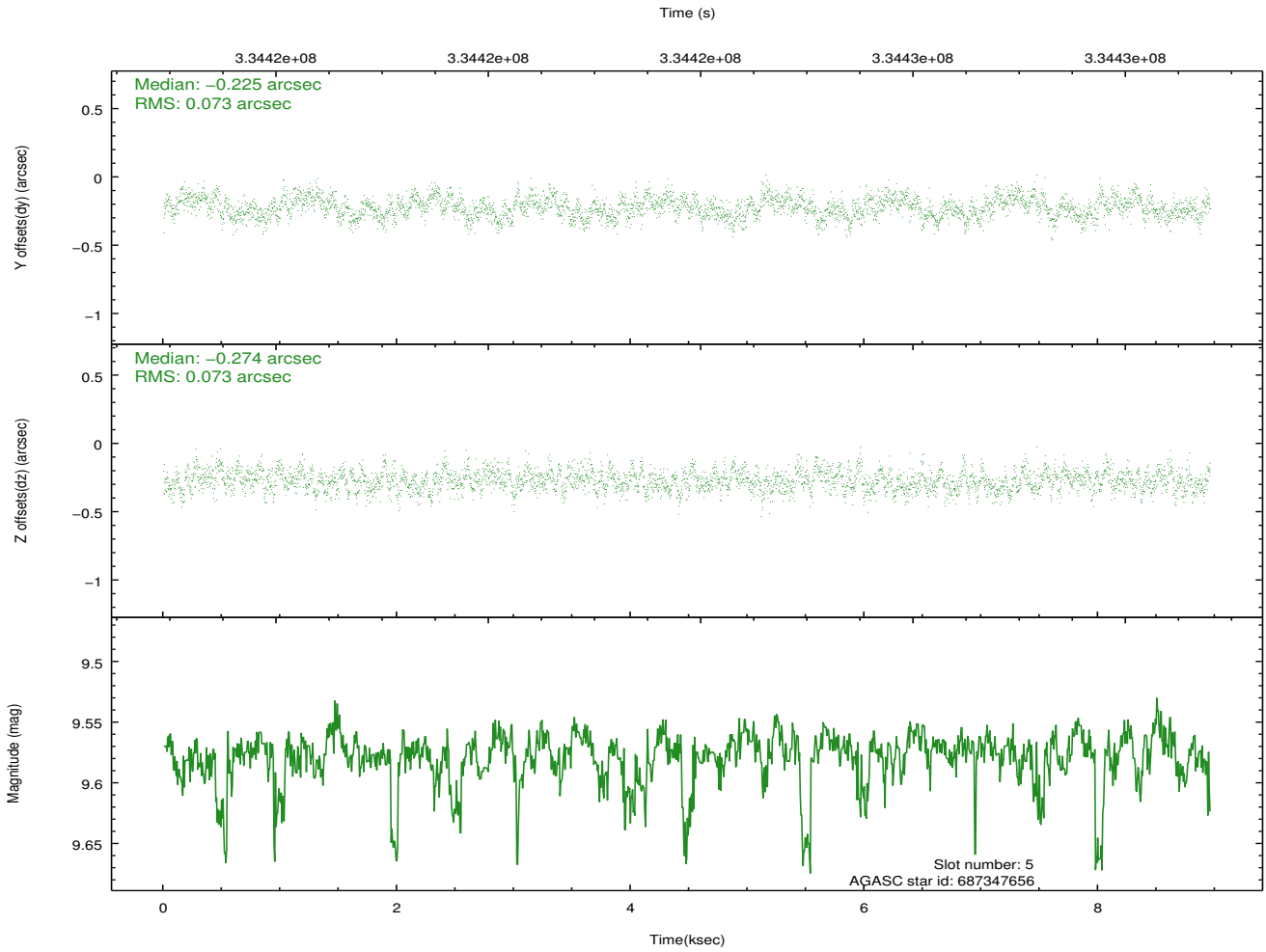
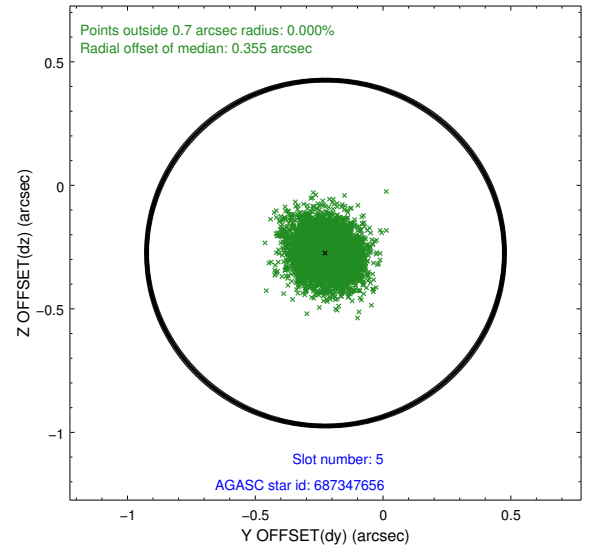
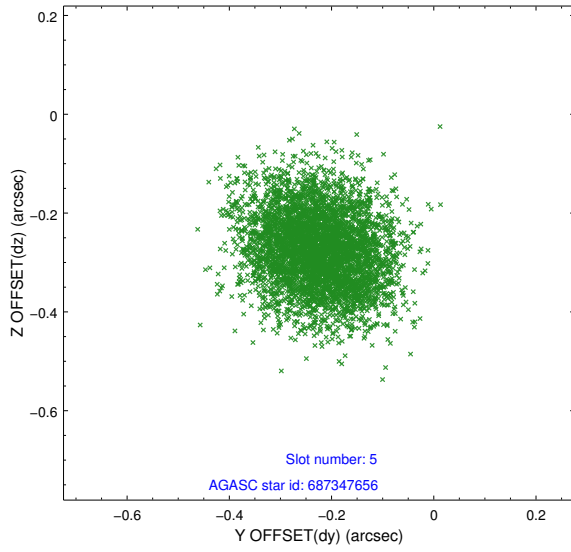
2.4.1 Slot 3



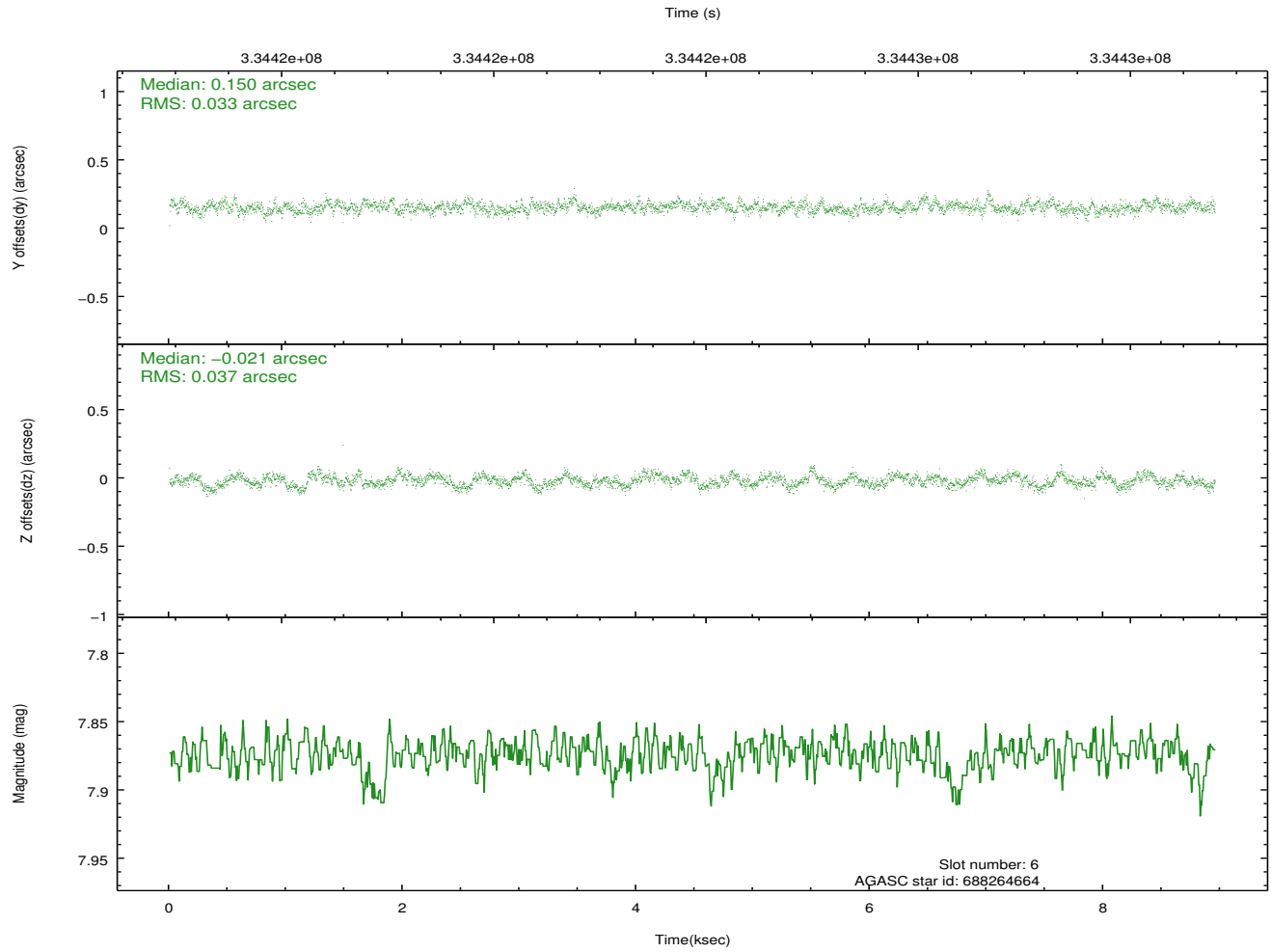
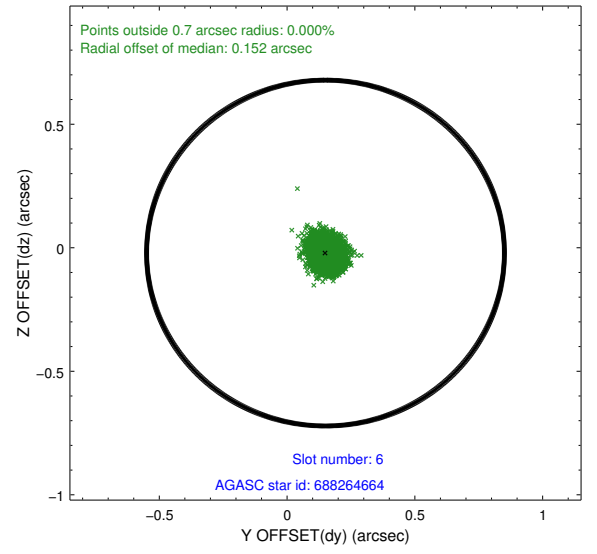
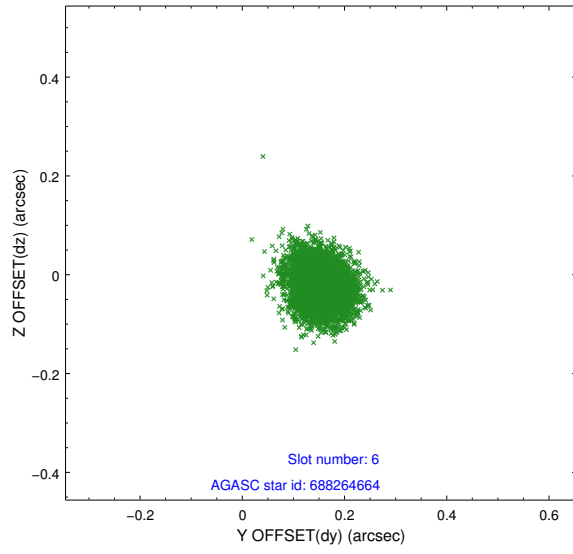
2.4.2 Slot 4



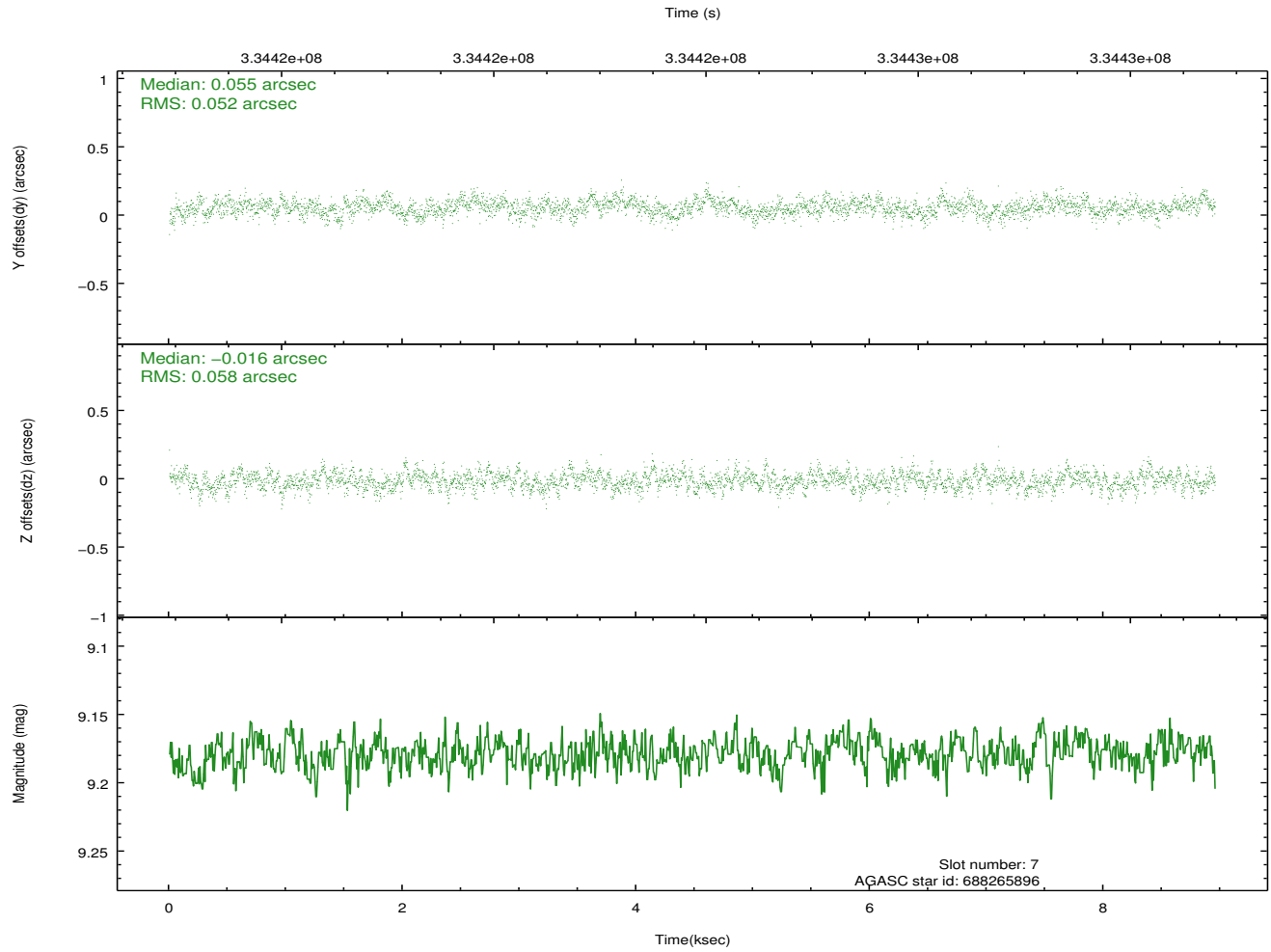
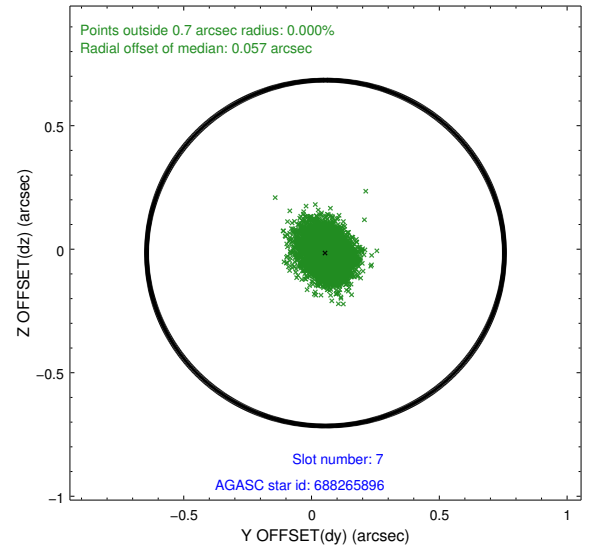
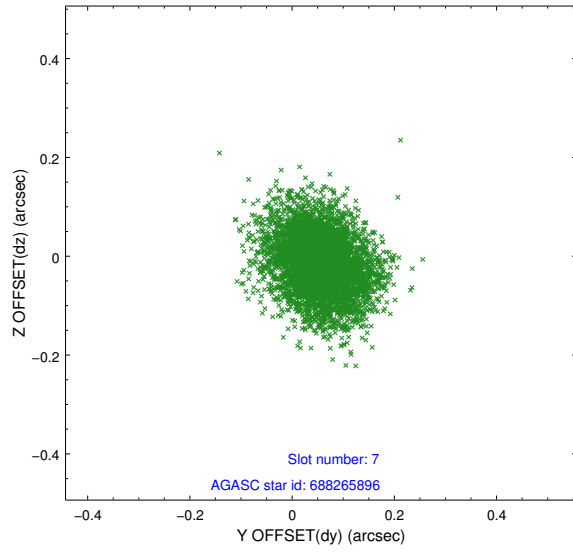
2.4.3 Slot 5



2.4.4 Slot 6

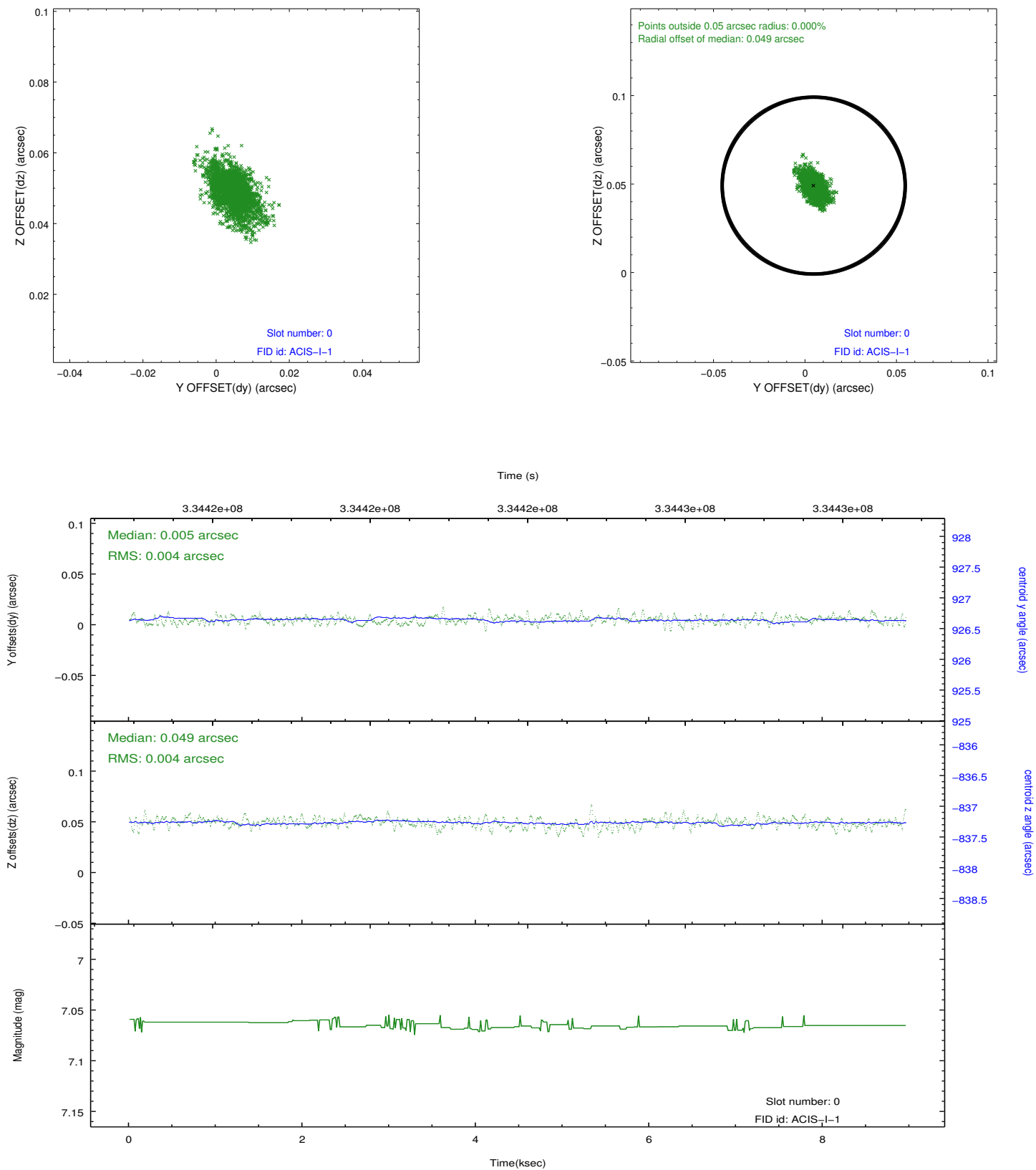


2.4.5 Slot 7

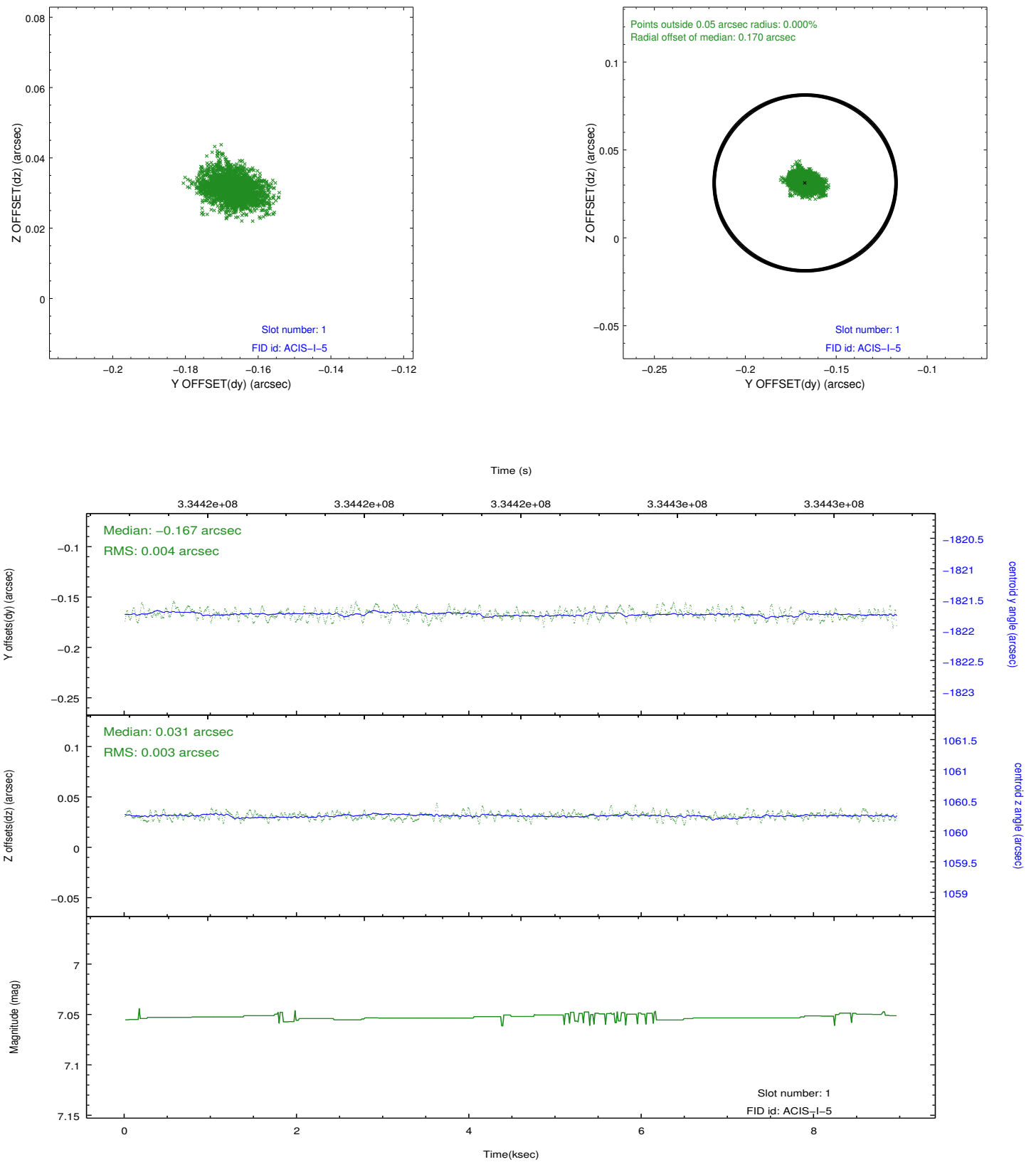


2.5 FID Slots

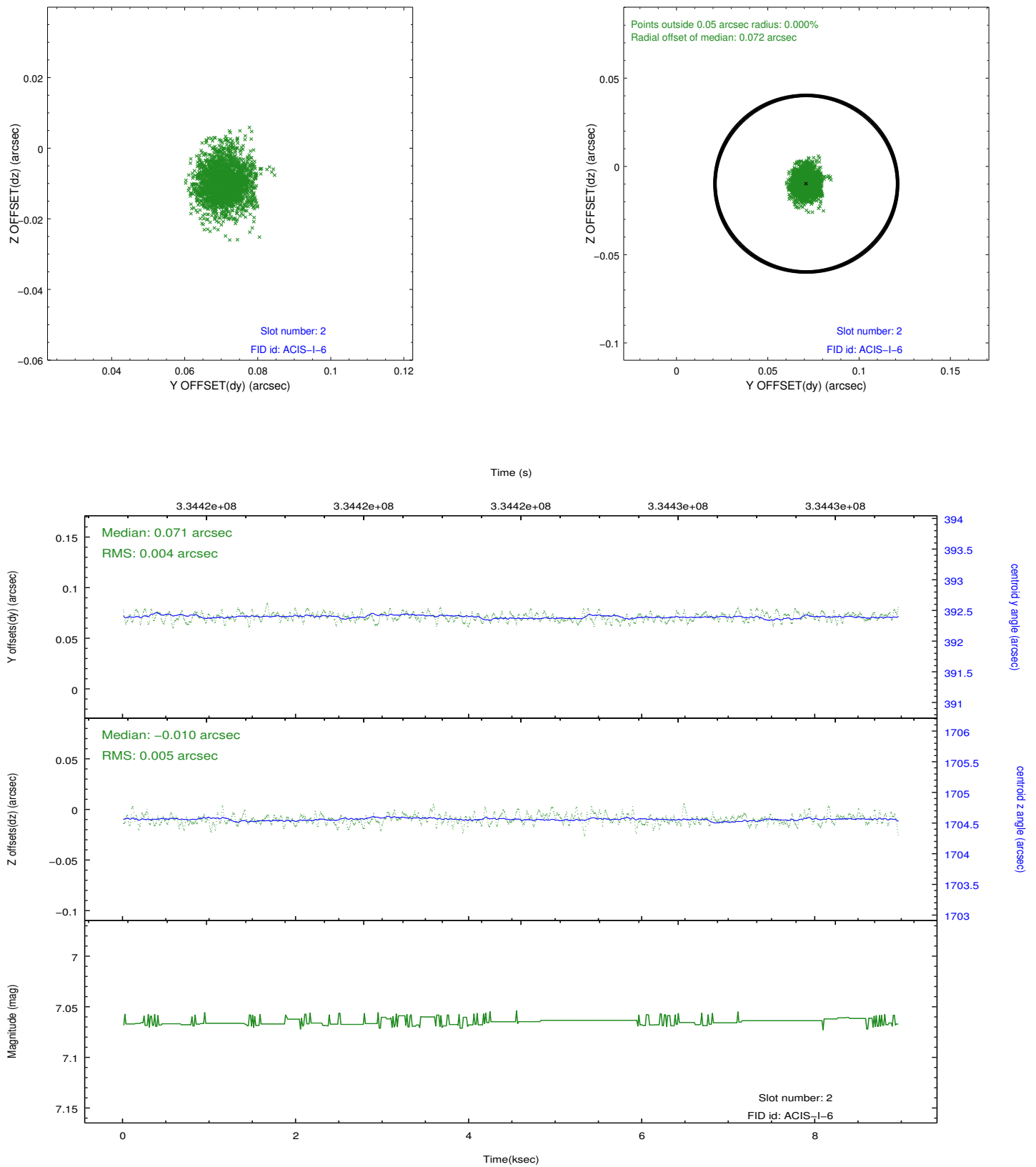
2.5.1 Slot 0



2.5.2 Slot 1



2.5.3 Slot 2



A Summary

A.1 Status

V&V Scientist	Beth Sundheim
V&V Date (YYYY-MM-DD)	2012.05.27
V&V Edition	1
V&V Disposition and Status	OK
V&V Charge Time	8.95590006

A.2 Comments