

V&V Reference Report

L2 ASCDS Version : 8.4.4

Observation 8613 - L2 Version 2
Chandra X-Ray Center

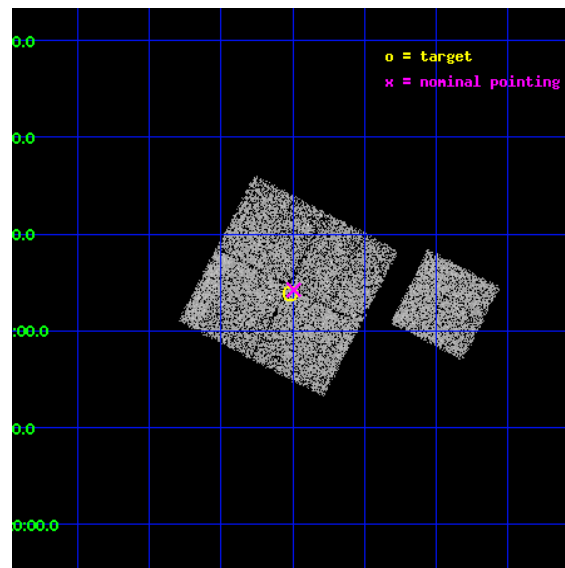
L2 Processing Date : May 19 2012

Contents

1	Front	2
2	OBI	3
2.1	OBI	3
2.1.1	Images	3
2.1.2	Bias	3
2.1.3	Parameters	4
2.1.4	Events	4
2.2	Compared Parameters	5
2.3	Aspect	6
2.4	Star Slots	9
2.4.1	Slot 3	9
2.4.2	Slot 4	10
2.4.3	Slot 5	11
2.4.4	Slot 6	12
2.4.5	Slot 7	13
2.5	FID Slots	14
2.5.1	Slot 0	14
2.5.2	Slot 1	15
2.5.3	Slot 2	16
A	Summary	17
A.1	Status	17
A.2	Comments	17

1 Front

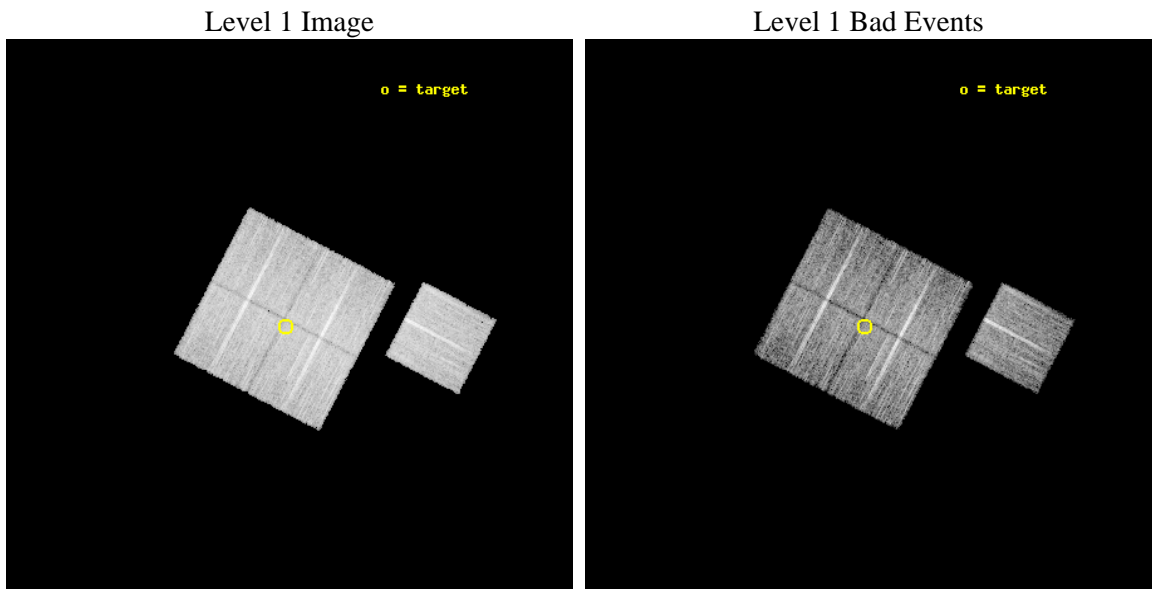
seq_num	900750	Sequence number
obs_id	8613	Observation id
title	Chandra Observations of the DEEP2 Fields	Proposal title
observer	Dr. Stephen Murray	Principal investigator
object	DEEP2 Field 3	Source name
dtcycle	0	
cycle	P	events from which exps? Prim/Second/Both
ra_targ	352.25372	Observer's specified target RA [deg]
dec_targ	0.064848	Observer's specified target Dec [deg]
ra_nom	352.2480257504	Nominal RA [deg]
dec_nom	0.070592383487169	Nominal Dec [deg]
roll_nom	117.50864744754	Nominal Roll [deg]
revision	2	Processing version of data
ontime	8959.000068903	Sum of GTIs [s]
livetime	8841.9441374829	Livetime [s]
ontime0	8955.8590685725	Sum of GTIs [s]
ontime1	8959.000068903	Sum of GTIs [s]
ontime2	8959.000068903	Sum of GTIs [s]
ontime3	8959.000068903	Sum of GTIs [s]
ontime6	8959.000068903	Sum of GTIs [s]
l2events	30972	Number of level 2 events



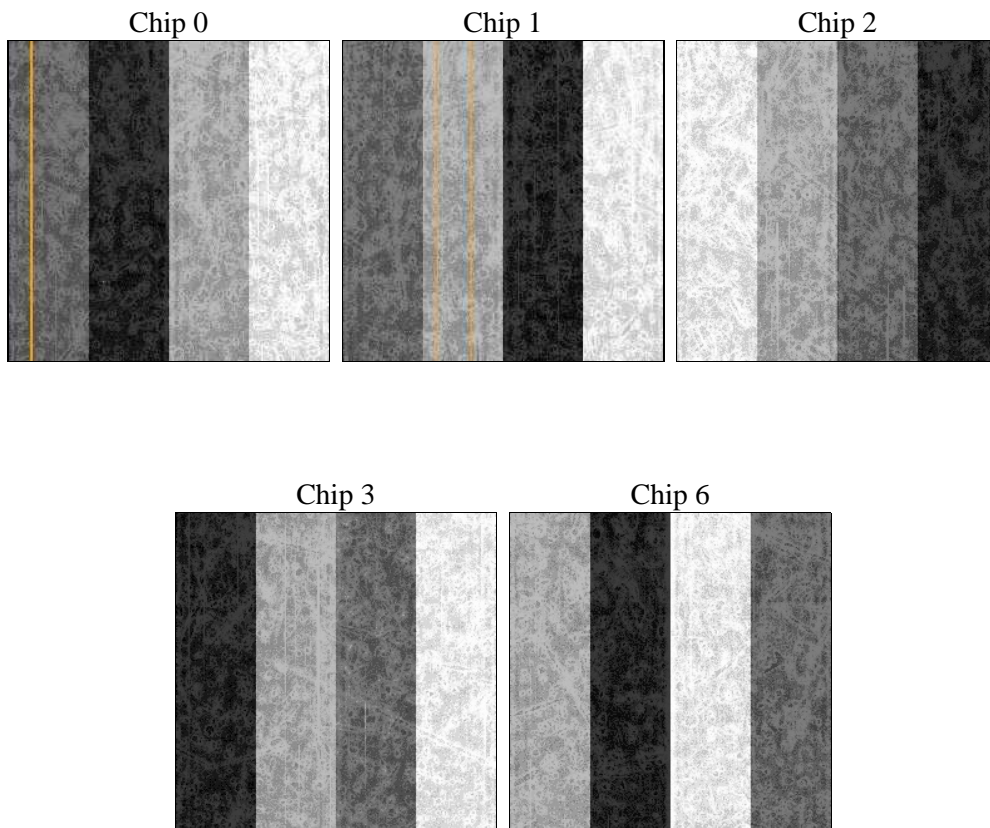
2 OBI

2.1 OBI

2.1.1 Images



2.1.2 Bias



2.1.3 Parameters

obi_num	0	Obi number	sched_exp_time	8771.000000	[s] Scheduled observation exposure time
ascdsver	8.4.4	Processing system revision	ontime	8959.000068903	Sum of GTIs [s]
caldsver	4.4.9	 	ontime0	8955.8590685725	Sum of GTIs [s]
date	2012-05-19T01:58:06	Date and time of file creation	ontime1	8959.000068903	Sum of GTIs [s]
revision	2	Processing version of data	ontime2	8959.000068903	Sum of GTIs [s]
			ontime3	8959.000068903	Sum of GTIs [s]
			ontime6	8959.000068903	Sum of GTIs [s]
			l1events	374498	Number of level 1 events

2.1.4 Events

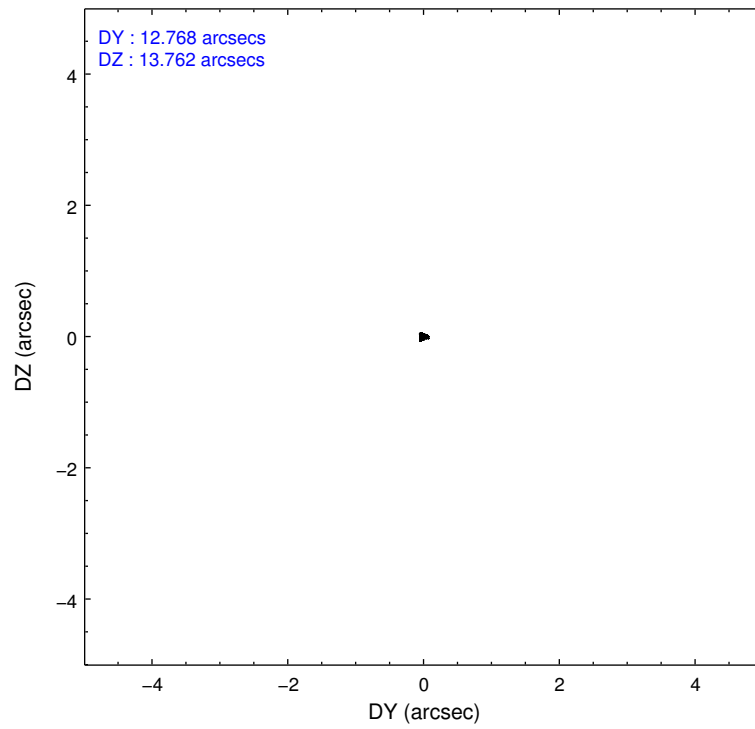
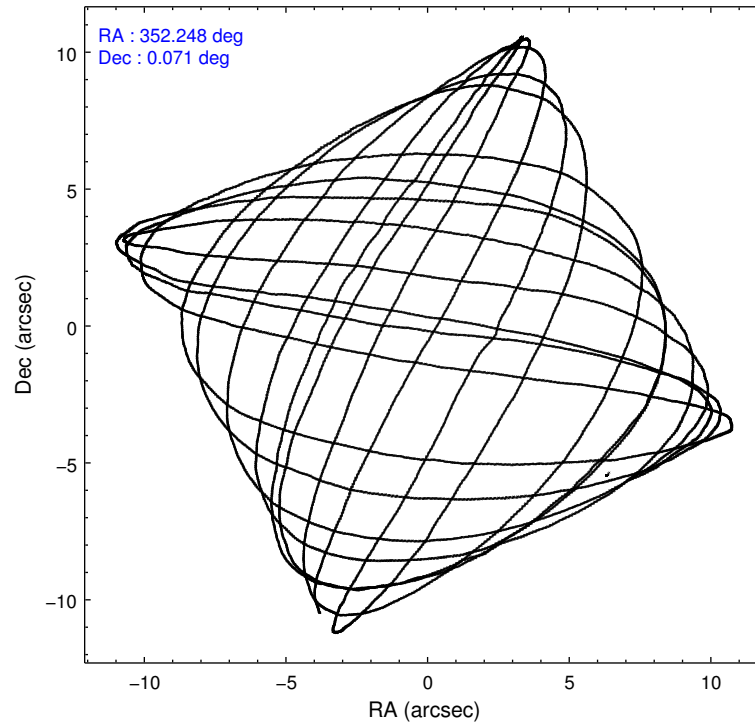
	ccd 0	ccd 1	ccd 2	ccd 3	ccd 6
level 1 events	69267	72648	79398	77599	75586
rejected events	61955	64322	72258	70819	67984
rejected %	89%	88%	91%	91%	89%

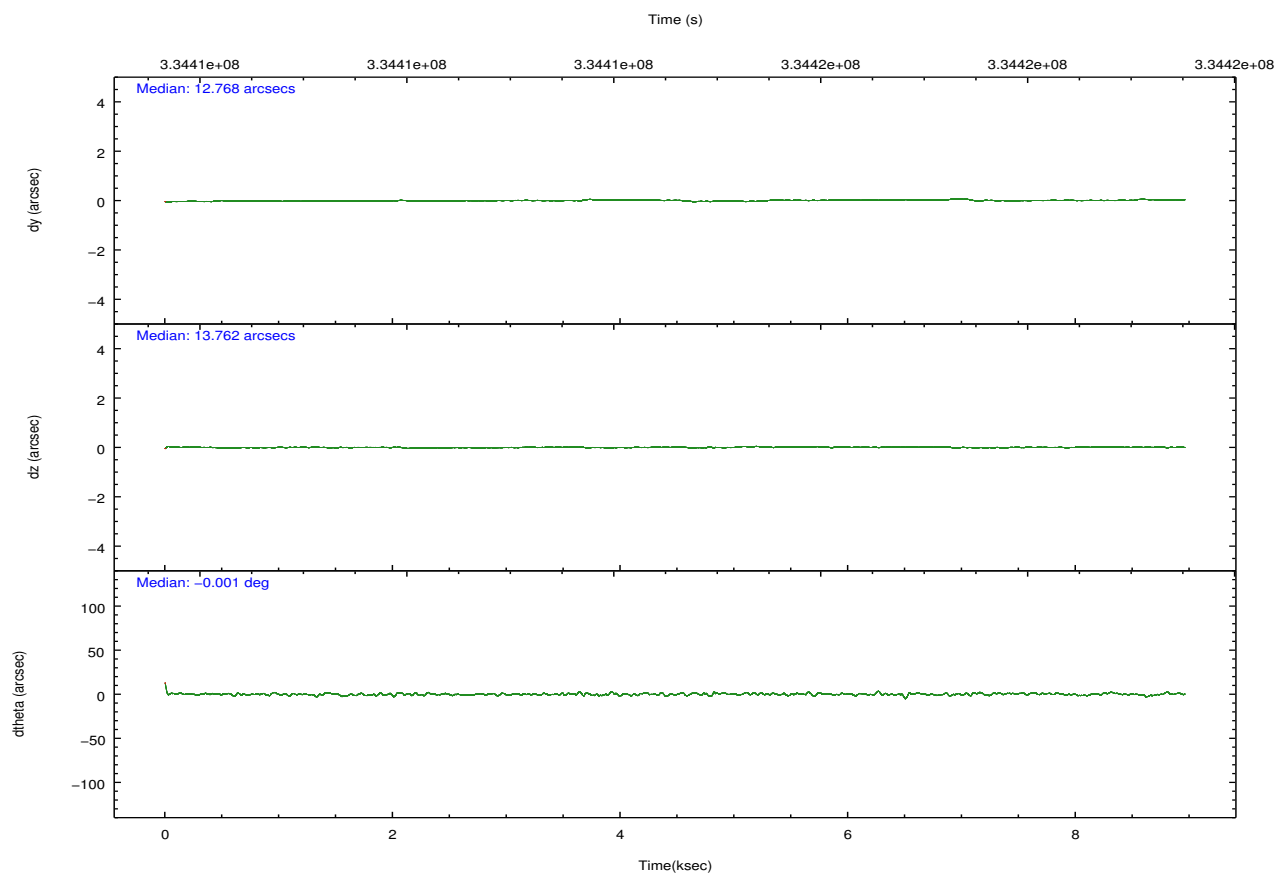
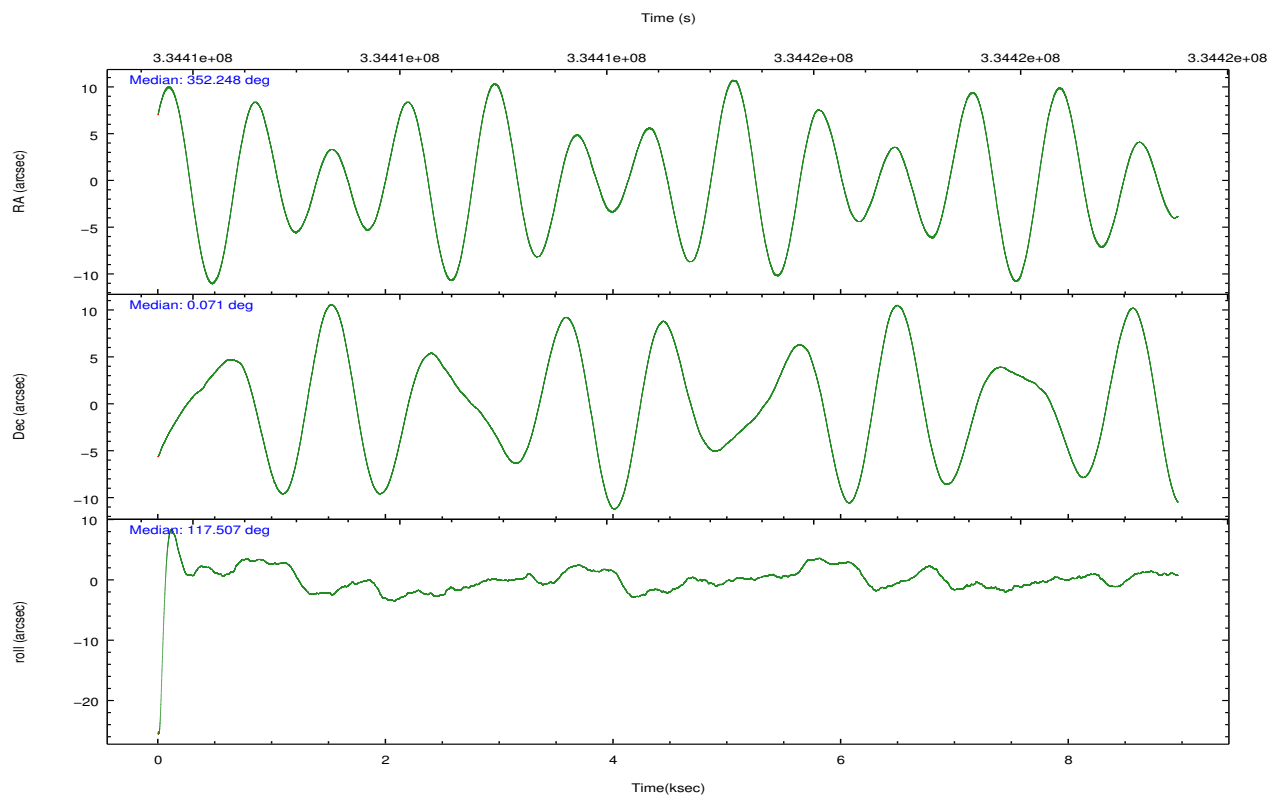
	ccd 0	ccd 1	ccd 2	ccd 3	ccd 6
grade 0 events	2599	3169	2690	2438	2773
	3%	4%	3%	3%	3%
grade 1 events	47	39	57	27	37
	0%	0%	0%	0%	0%
grade 2 events	1820	1917	1785	1520	1665
	2%	2%	2%	1%	2%
grade 3 events	867	921	797	788	915
	1%	1%	1%	1%	1%
grade 4 events	789	949	786	791	784
	1%	1%	0%	1%	1%
grade 5 events	2660	3076	2524	3156	3127
	3%	4%	3%	4%	4%
grade 6 events	1497	1697	1361	1490	1736
	2%	2%	1%	1%	2%
grade 7 events	58988	60880	69398	67389	64549
	85%	83%	87%	86%	85%

2.2 Compared Parameters

Parameter	Planned	Actual	Parameter	Planned	Actual
Instrument	ACIS	ACIS	Obspar format version number	7	7
Detector	ACIS-01236	ACIS-01236	Obspar file type	PREDICTED	ACTUAL
Grating	NONE	NONE	Obspar update status	NONE	UPDATED
Data mode	VFAINT	VFAINT	CCD I0 on	Y	Y
Observation mode	POINTING	POINTING	CCD I1 on	Y	Y
[deg] Pointing RA	352.271272	352.2480257503967	CCD I2 on	Y	Y
[deg] Pointing Dec	0.055907	0.07059238348716873	CCD I3 on	Y	Y
[deg] Pointing Roll	117.299988	117.5086474475388	CCD S0 on	N	N
[mm] SIM focus pos	-0.782348	-0.7809083437167272	CCD S1 on	N	N
[mm] SIM defocus	0	0.001439871863259334	CCD S2 on	O1	Y
[mm] SIM translation stage pos	-233.592463	-233.5874344608287	CCD S3 on	N	N
[mm] SIM translation stage offset	0	-0.005018542100998502	CCD S4 on	N	N
[s] Observation start time (MET)	334410305.184000	334409929.29747	CCD S5 on	N	N
Observation start date	2008-08-06T11:44:00	2008-08-06T11:38:49	Number of optional ACIS chips dropped	0	0
[s] Observation end time (MET)	334419076.184000	334419210.67292	On-chip summing requested	N	N
Observation end date	2008-08-06T14:10:11	2008-08-06T14:13:30	Subarray requested	NONE	NONE
Read mode	TIMED	TIMED	Alternating exposures requested	N	N
			[s] Primary exposure time	0.000000	3.1

2.3 Aspect



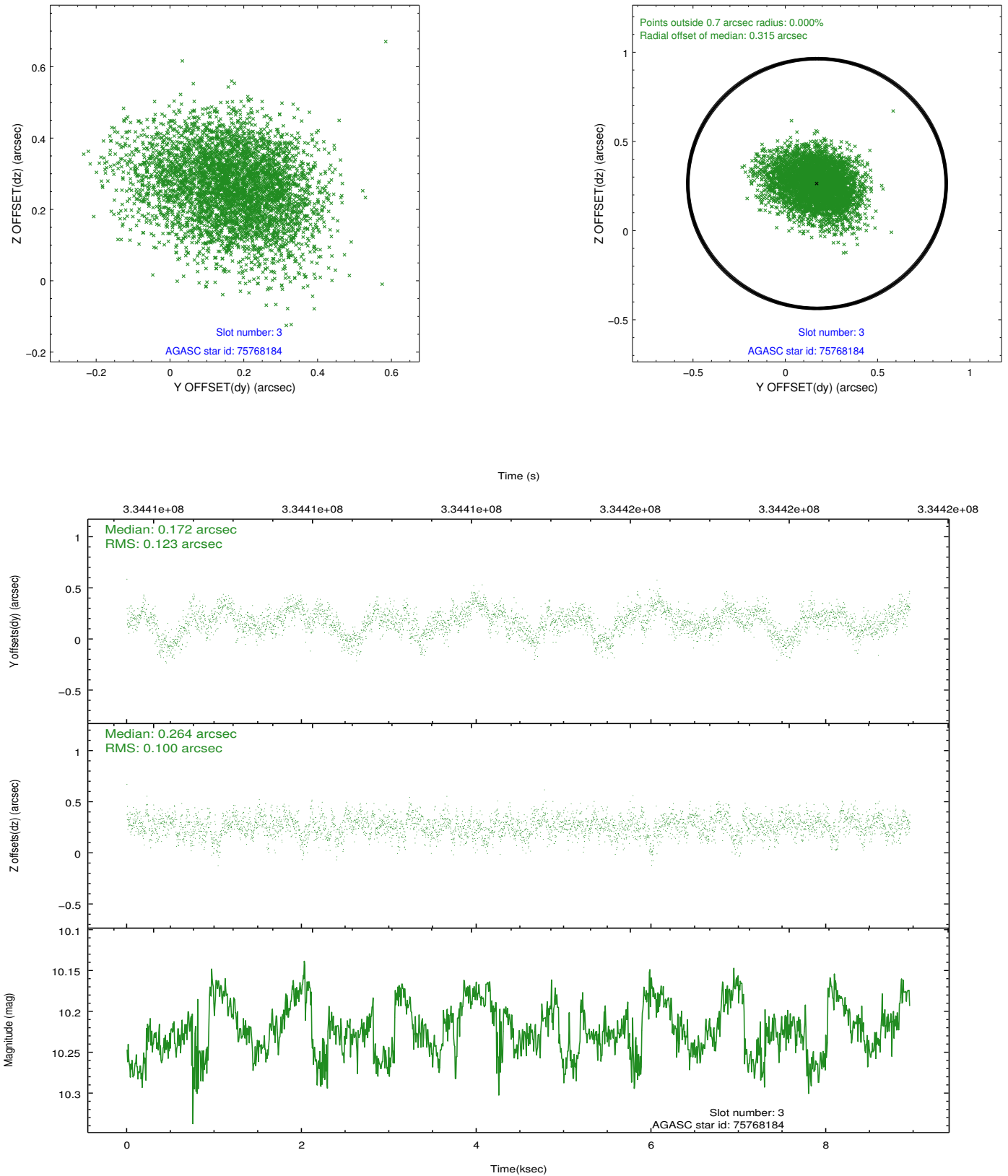


Slot Statistics

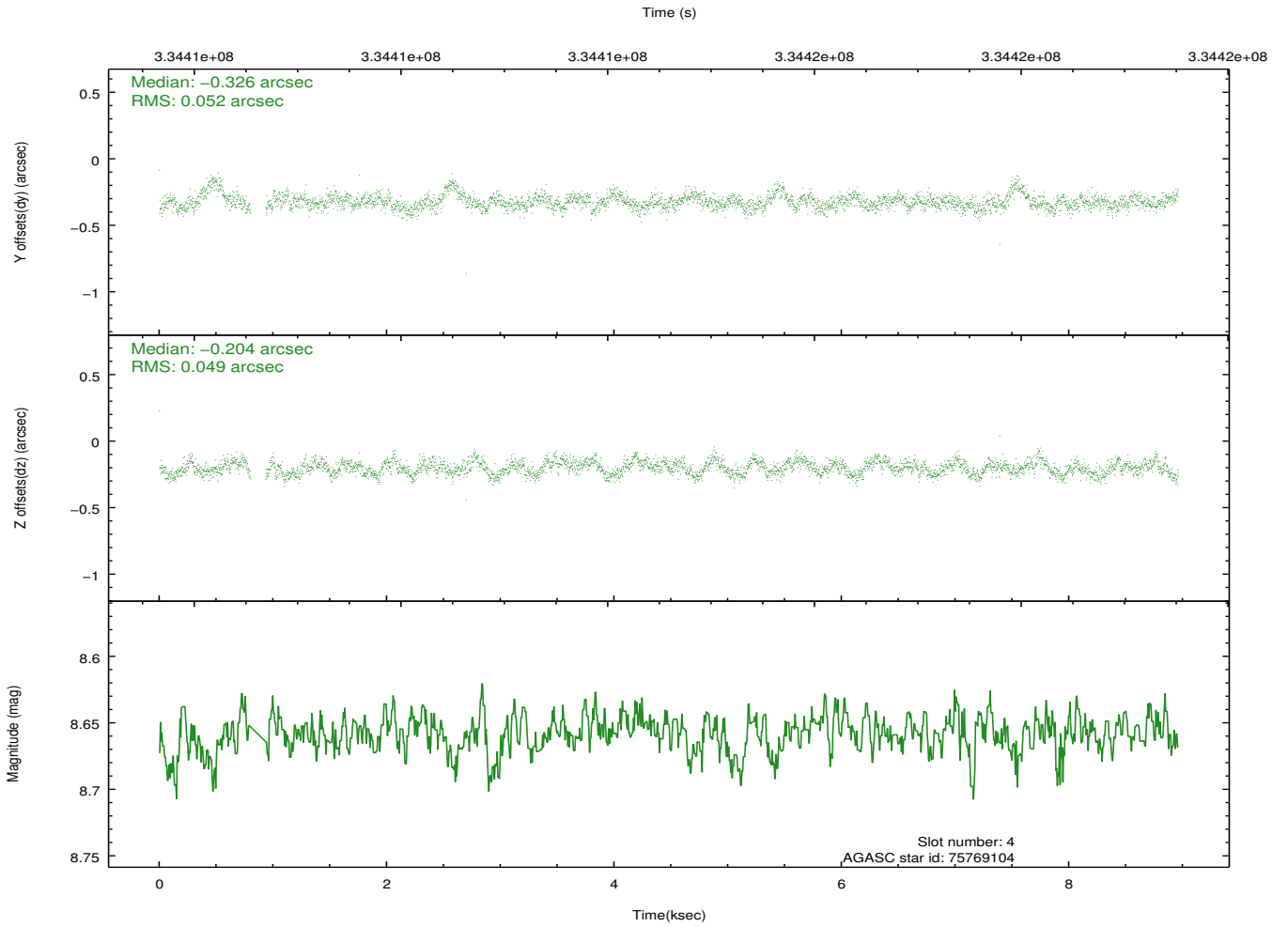
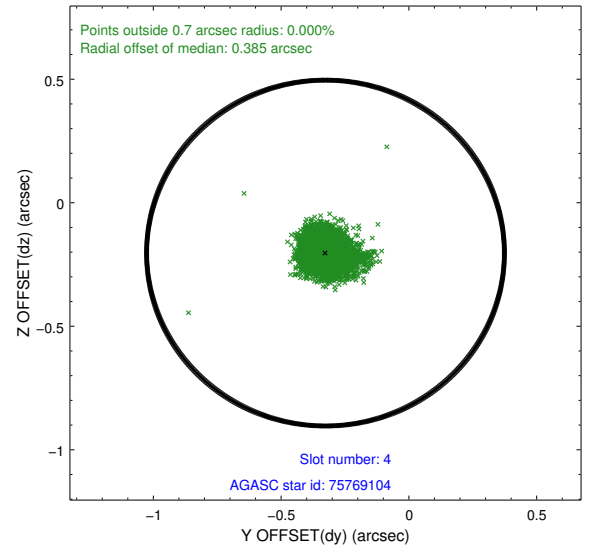
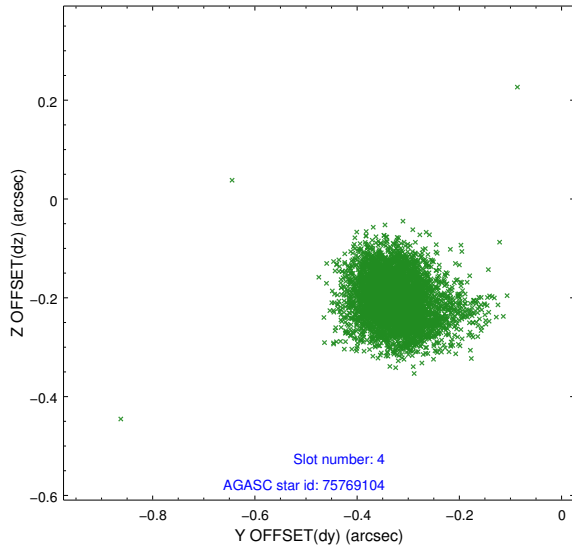
slot	status	id	mag	n_pts	med_dy	med_dz	dr1	dr2	ra	dec	mean_y	mean_z
0	FID	ACIS-I-1	7.07	2186	-0.062	0.086	0.009	0.016	0.000000	0.000000	926.68	-837.25
1	FID	ACIS-I-2	6.98	2186	-0.126	-0.087	0.007	0.012	0.000000	0.000000	-767.14	-844.15
2	FID	ACIS-I-4	6.99	2185	0.090	0.068	0.007	0.013	0.000000	0.000000	2146.47	1062.21
3	GUIDE	75768184	10.22	4366	0.172	0.264	0.168	0.276	352.363704	0.298036	622.09	-695.00
4	GUIDE	75769104	8.66	4307	-0.326	-0.204	0.073	0.122	351.845083	0.370778	1710.80	843.61
5	GUIDE	687347464	10.17	4366	0.161	-0.108	0.180	0.285	352.245777	-0.524573	-1814.24	1040.37
6	GUIDE	687347656	9.57	4364	-0.013	-0.171	0.133	0.202	352.228641	-0.041094	-240.08	297.15
7	GUIDE	688265896	9.17	4366	0.000	0.210	0.101	0.167	352.587516	-0.177872	-1269.99	-625.18

2.4 Star Slots

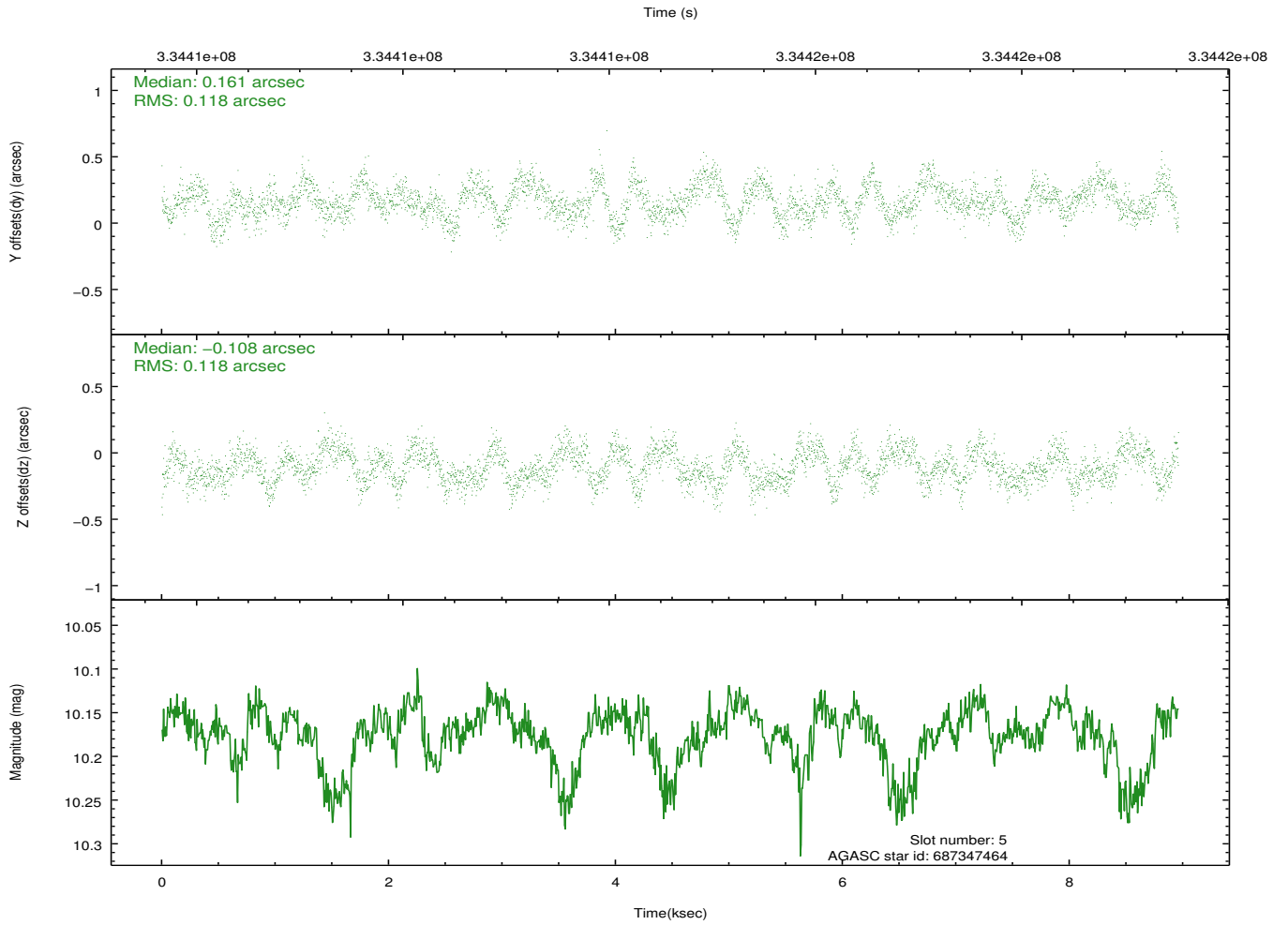
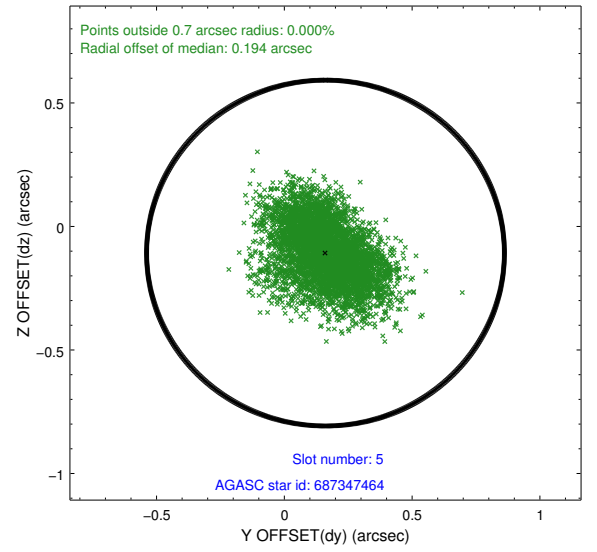
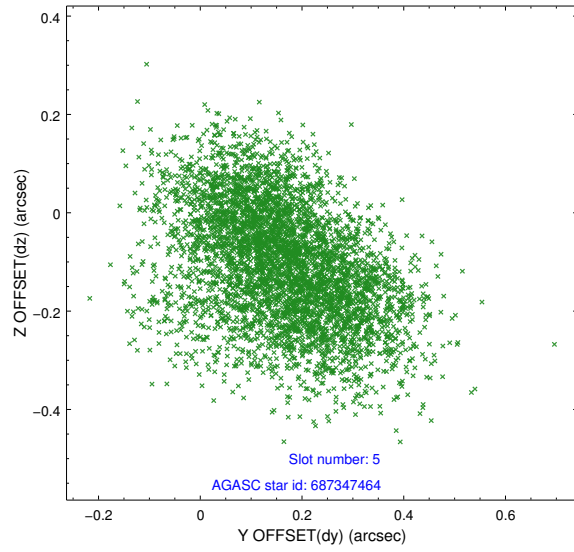
2.4.1 Slot 3



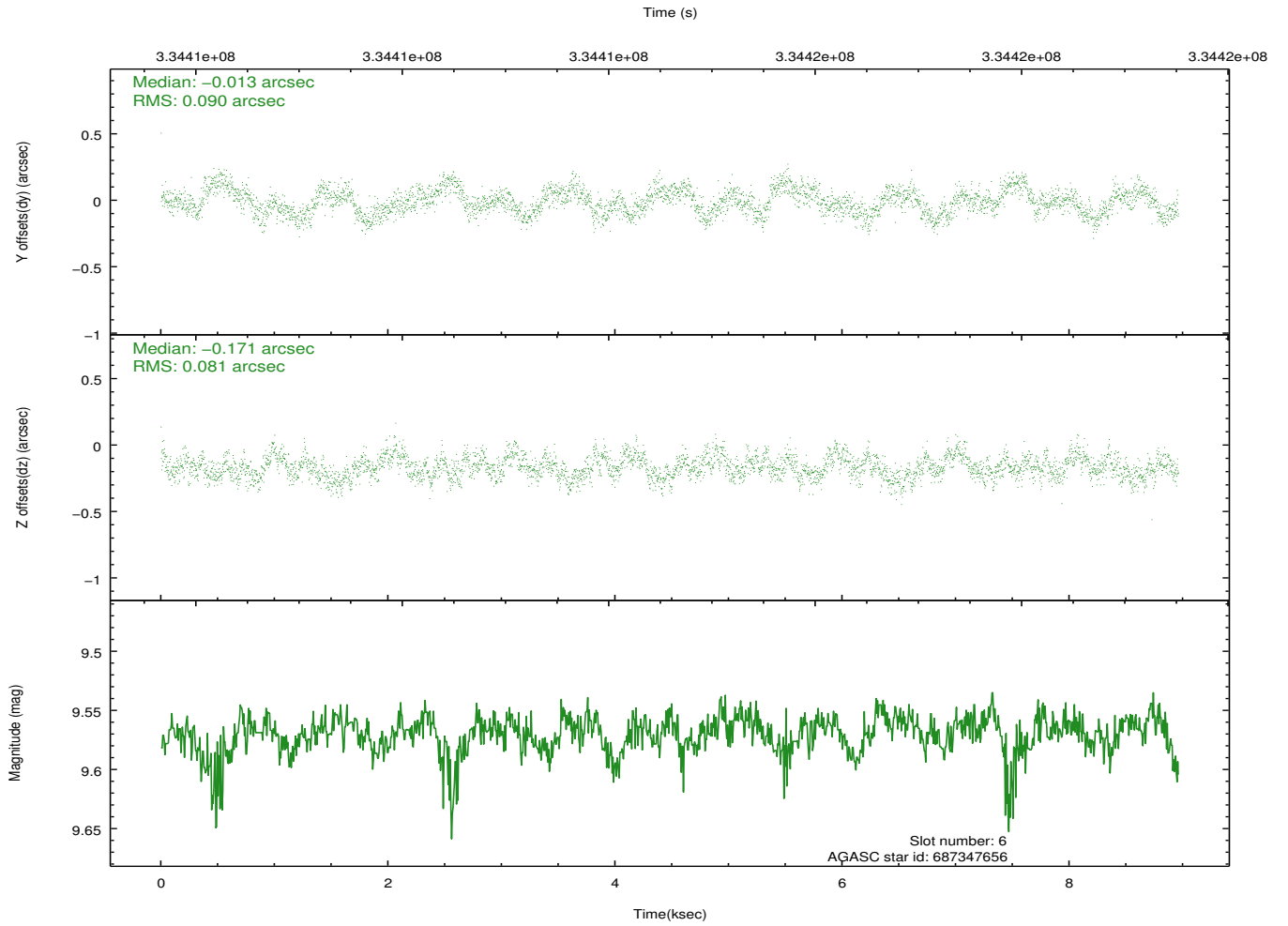
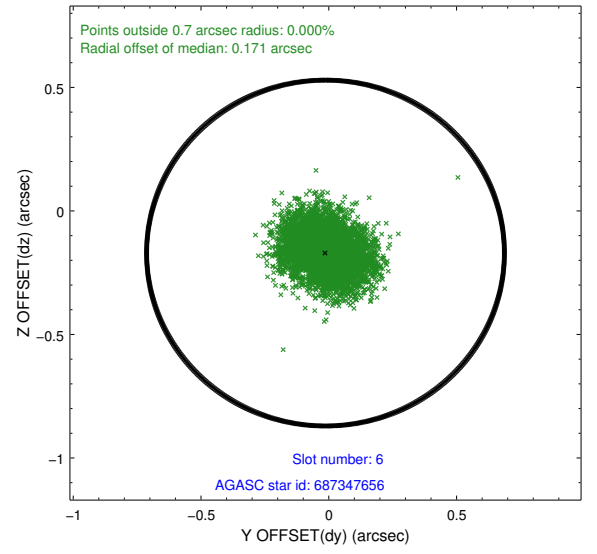
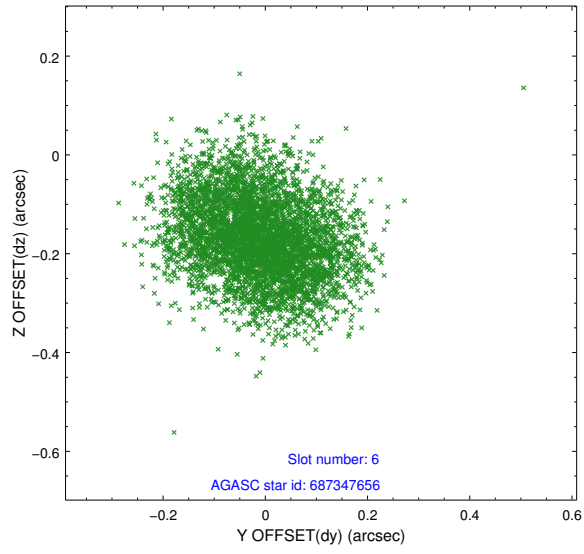
2.4.2 Slot 4



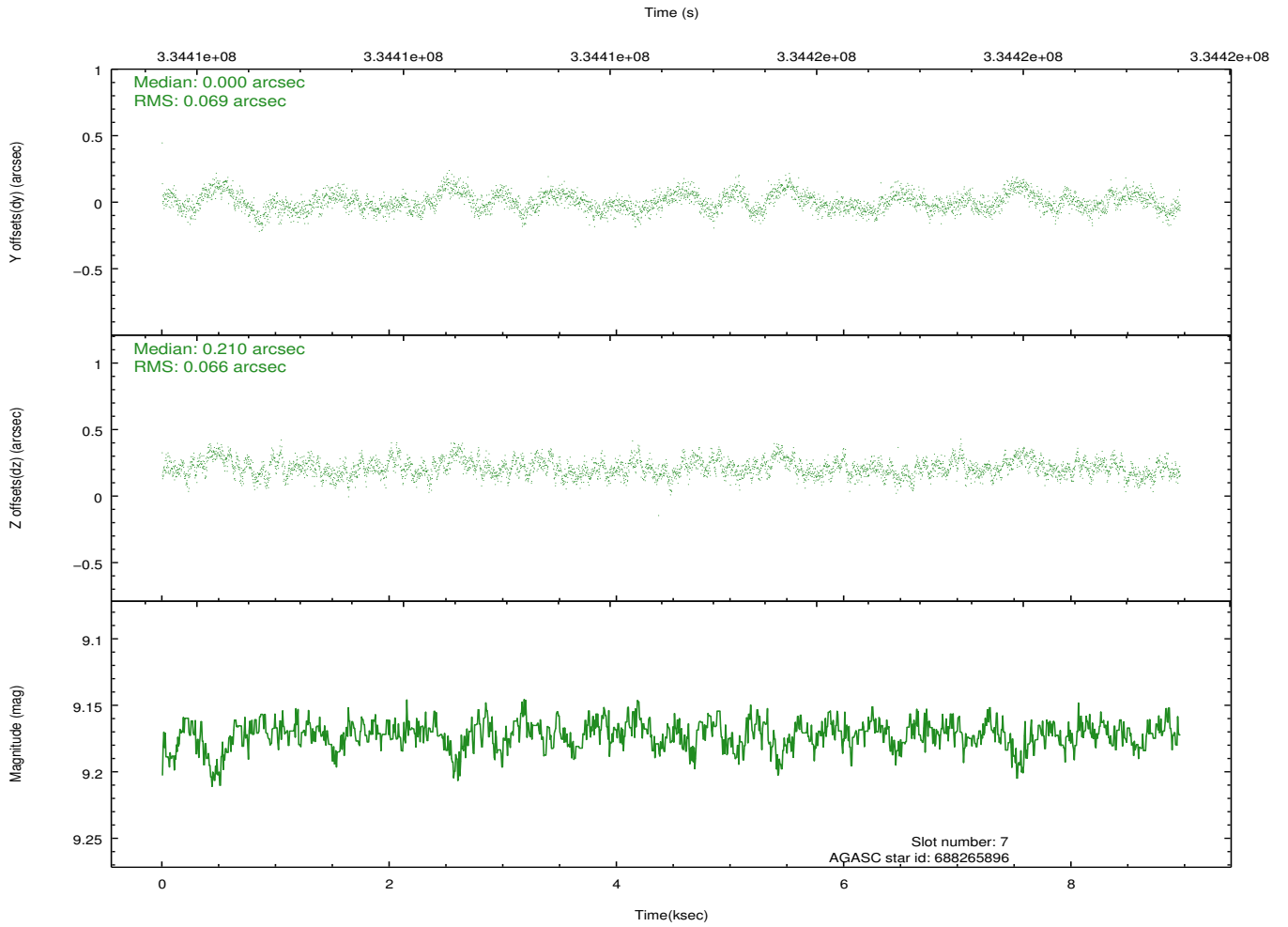
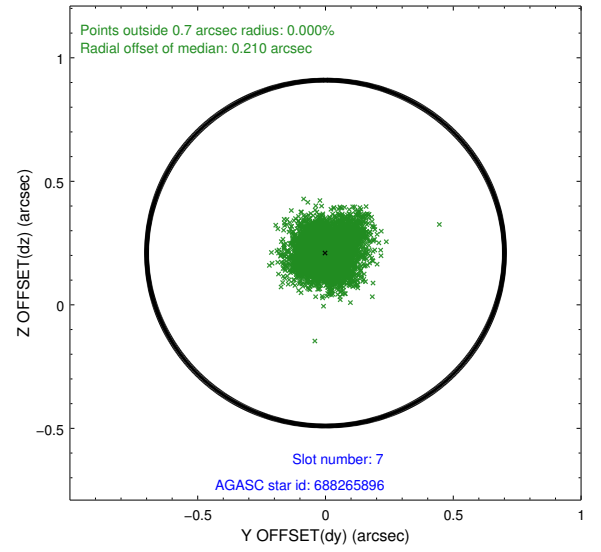
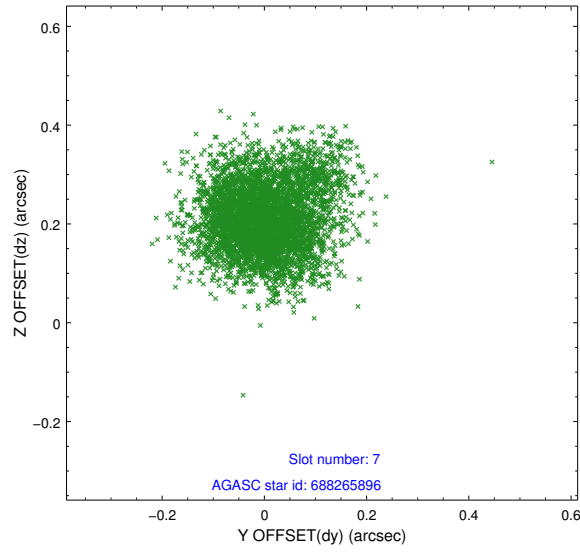
2.4.3 Slot 5



2.4.4 Slot 6

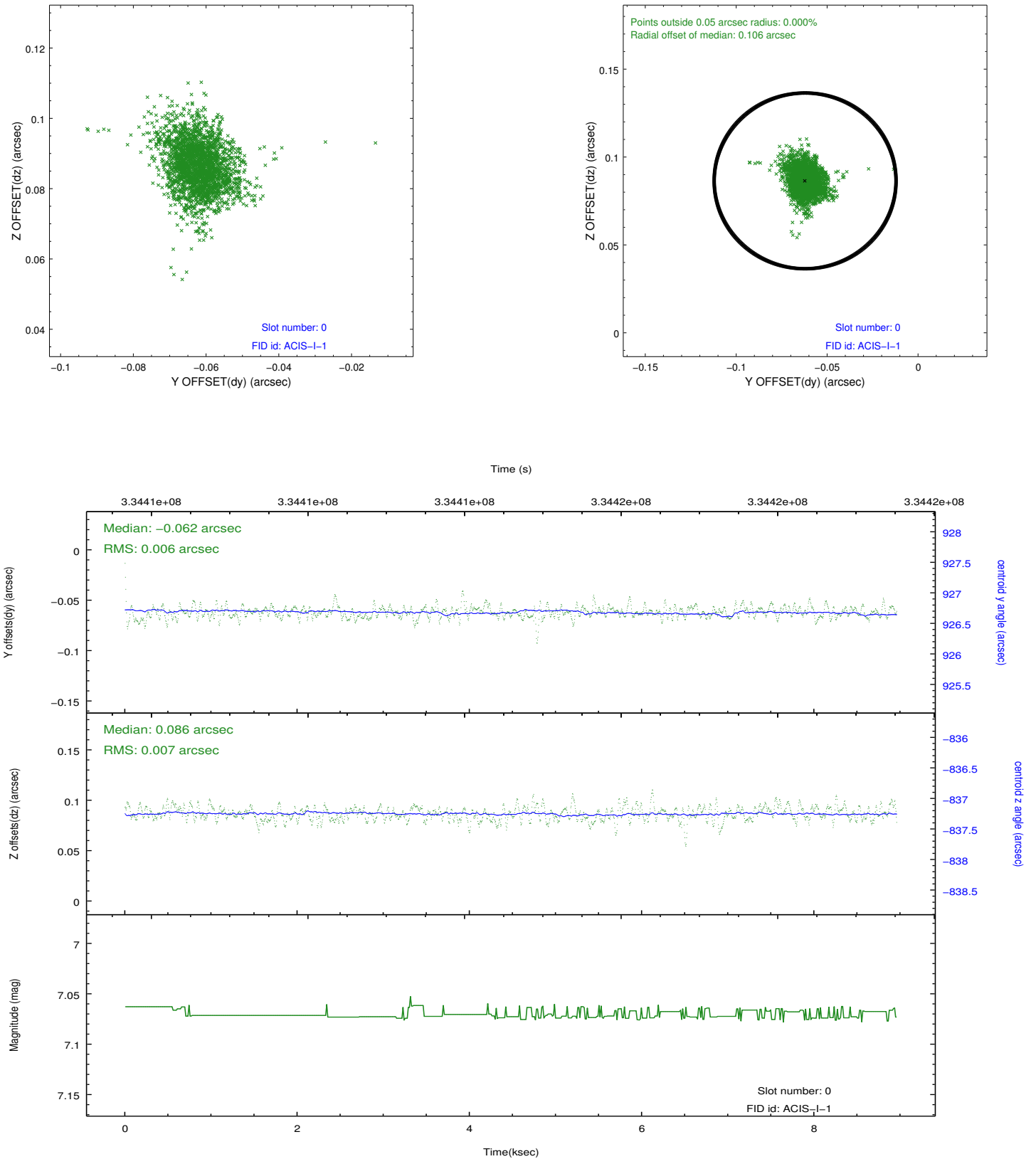


2.4.5 Slot 7

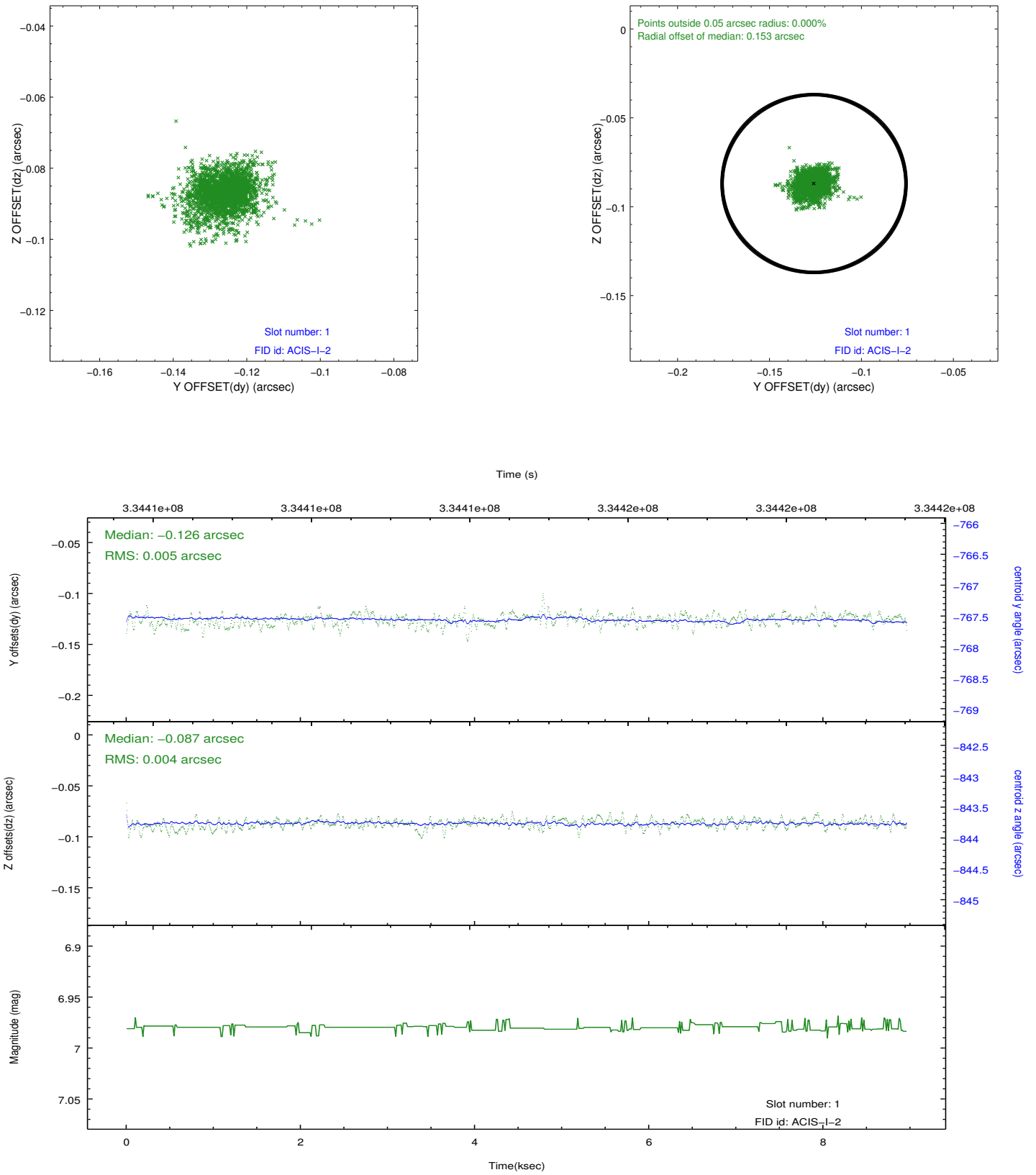


2.5 FID Slots

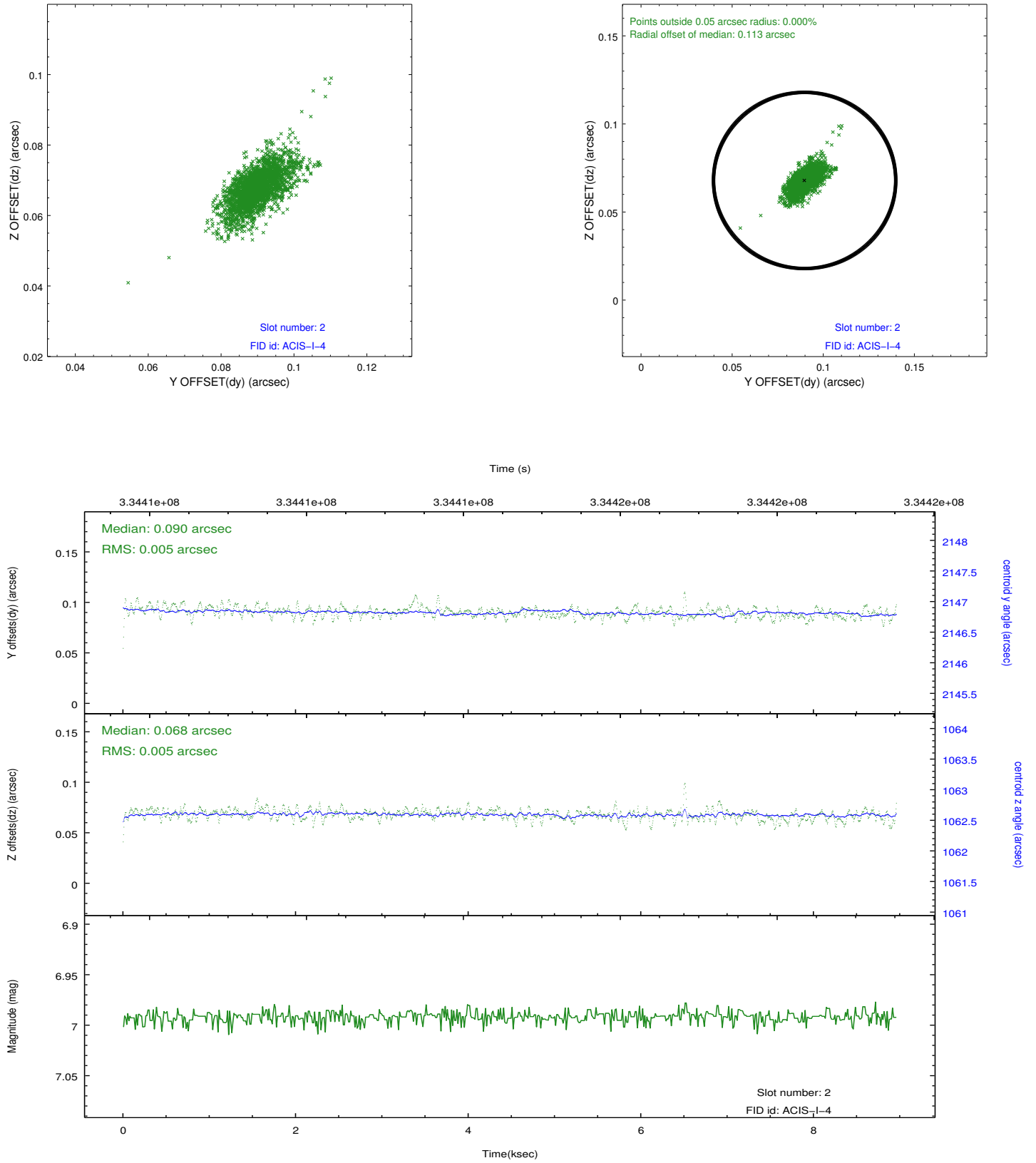
2.5.1 Slot 0



2.5.2 Slot 1



2.5.3 Slot 2



A Summary

A.1 Status

V&V Scientist	Beth Sundheim
V&V Date (YYYY-MM-DD)	2012.05.27
V&V Edition	1
V&V Disposition and Status	OK
V&V Charge Time	8.95900006

A.2 Comments