

# V&V Reference Report

## L2 ASCDS Version : 8.4.4

Observation 8609 - L2 Version 2  
Chandra X-Ray Center

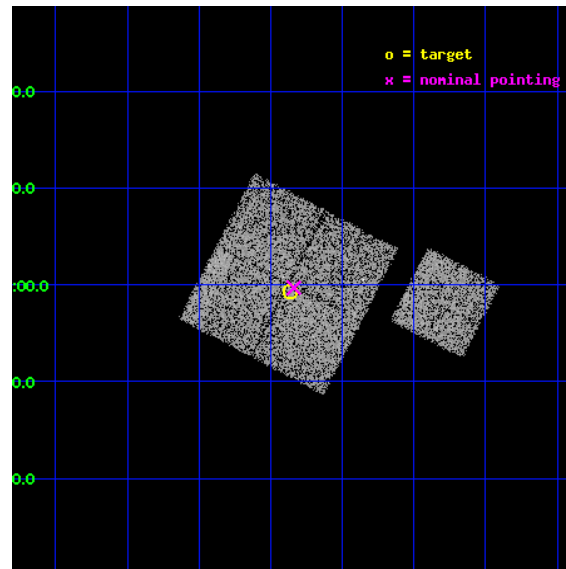
L2 Processing Date : May 18 2012

## Contents

<b>1</b>	<b>Front</b>	<b>2</b>
<b>2</b>	<b>OBI</b>	<b>3</b>
2.1	OBI . . . . .	3
2.1.1	Images . . . . .	3
2.1.2	Bias . . . . .	3
2.1.3	Parameters . . . . .	4
2.1.4	Events . . . . .	4
2.2	Compared Parameters . . . . .	5
2.3	Aspect . . . . .	6
2.4	Star Slots . . . . .	9
2.4.1	Slot 3 . . . . .	9
2.4.2	Slot 4 . . . . .	10
2.4.3	Slot 5 . . . . .	11
2.4.4	Slot 6 . . . . .	12
2.4.5	Slot 7 . . . . .	13
2.5	FID Slots . . . . .	14
2.5.1	Slot 0 . . . . .	14
2.5.2	Slot 1 . . . . .	15
2.5.3	Slot 2 . . . . .	16
<b>A</b>	<b>Summary</b>	<b>17</b>
A.1	Status . . . . .	17
A.2	Comments . . . . .	17

# 1 Front

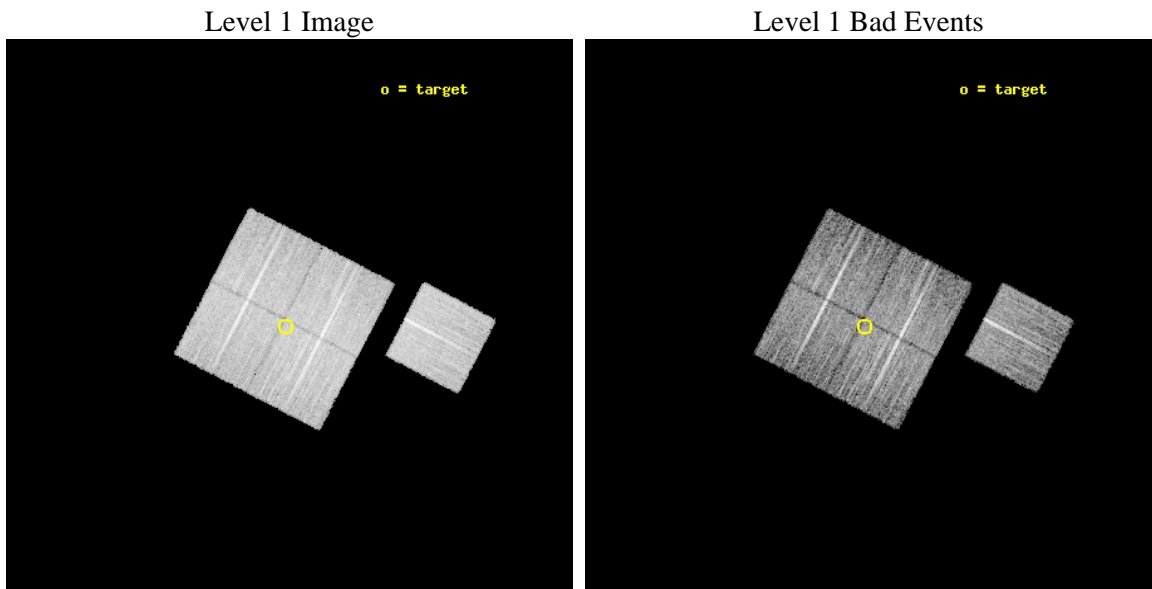
seq_num	900746	Sequence number
obs_id	8609	Observation id
title	Chandra Observations of the DEEP2 Fields	Proposal title
observer	Dr. Stephen Murray	Principal investigator
object	DEEP2 Field 3	Source name
dtcycle	0	&#160
cycle	P	events from which exps? Prim/Second/Both
ra_targ	353.09031	Observer's specified target RA [deg]
dec_targ	-0.01102	Observer's specified target Dec [deg]
ra_nom	353.08458589388	Nominal RA [deg]
dec_nom	-0.0052942560260154	Nominal Dec [deg]
roll_nom	117.50869145049	Nominal Roll [deg]
revision	2	Processing version of data
ontime	8959.000068903	Sum of GTIs [s]
livetime	8841.9441374829	Livetime [s]
ontime0	8955.8590586782	Sum of GTIs [s]
ontime1	8952.718108058	Sum of GTIs [s]
ontime2	8959.000068903	Sum of GTIs [s]
ontime3	8959.000068903	Sum of GTIs [s]
ontime6	8959.000068903	Sum of GTIs [s]
l2events	31159	Number of level 2 events



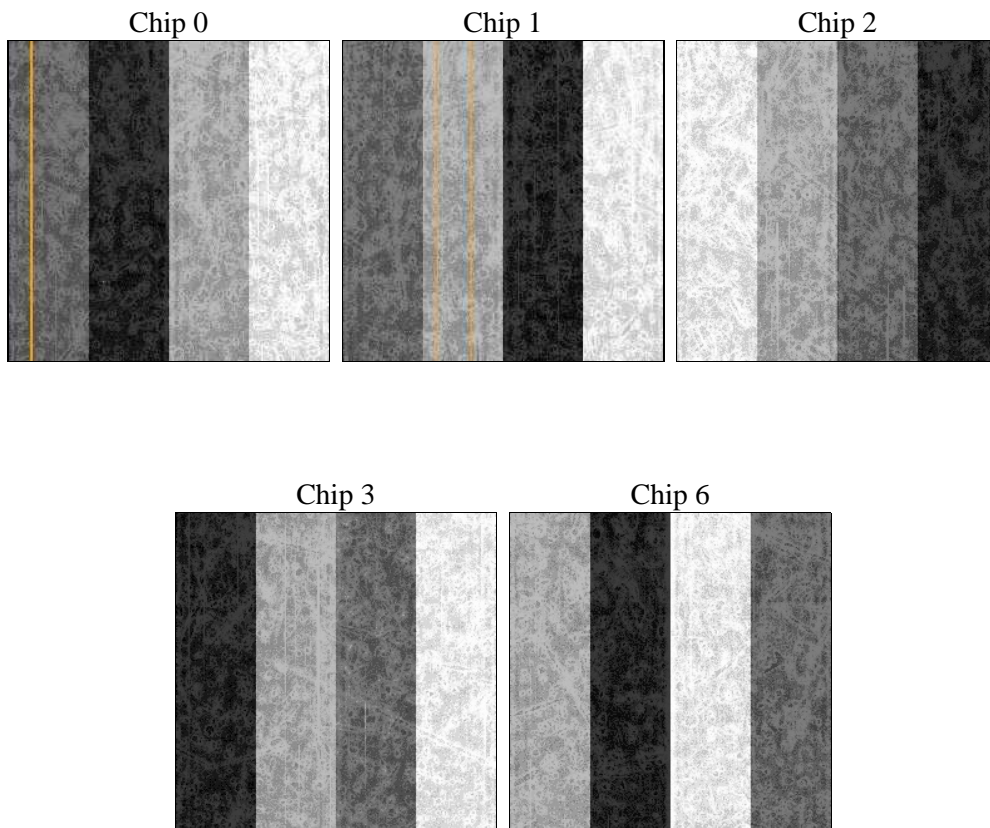
## 2 OBI

### 2.1 OBI

#### 2.1.1 Images



#### 2.1.2 Bias



### 2.1.3 Parameters

obi_num	0	Obi number	sched_exp_time	8771.000000	[s] Scheduled observation exposure time
ascdsver	8.4.4	Processing system revision	ontime	8959.000068903	Sum of GTIs [s]
caldsver	4.4.9	&#160	ontime0	8955.8590586782	Sum of GTIs [s]
date	2012-05-19T01:53:16	Date and time of file creation	ontime1	8952.718108058	Sum of GTIs [s]
revision	2	Processing version of data	ontime2	8959.000068903	Sum of GTIs [s]
			ontime3	8959.000068903	Sum of GTIs [s]
			ontime6	8959.000068903	Sum of GTIs [s]
			l1events	381164	Number of level 1 events

### 2.1.4 Events

	ccd 0	ccd 1	ccd 2	ccd 3	ccd 6
level 1 events	70872	73333	78335	78815	79809
rejected events	63433	64946	71106	71685	72269
rejected %	89%	88%	90%	90%	90%

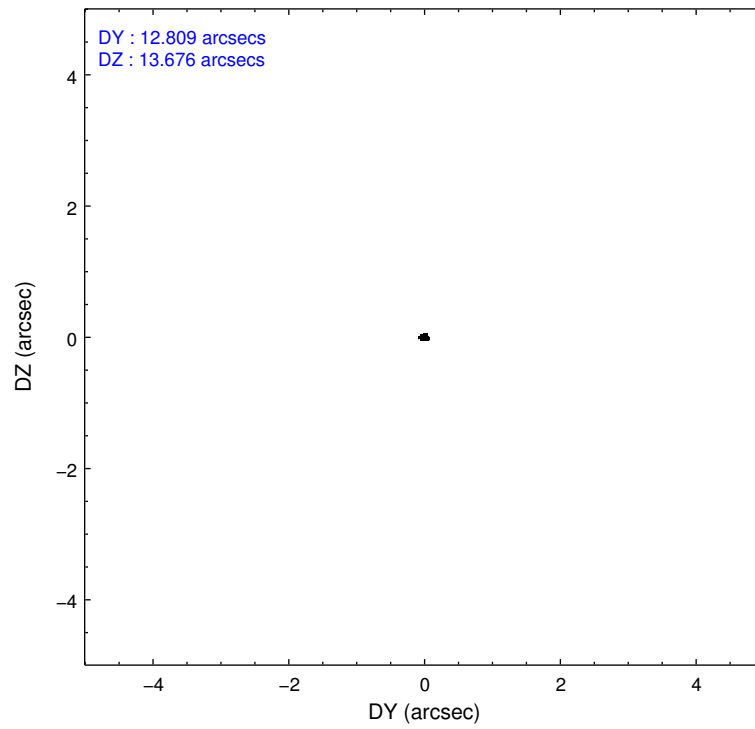
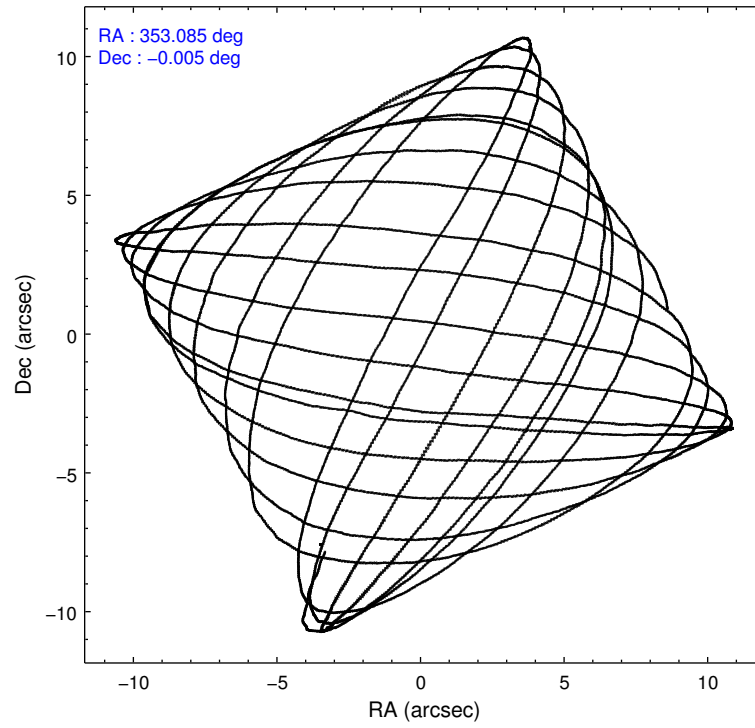
	ccd 0	ccd 1	ccd 2	ccd 3	ccd 6
grade 0 events	2686	3068	2673	2485	2681
	3%	4%	3%	3%	3%
grade 1 events	44	45	47	44	45
	0%	0%	0%	0%	0%
grade 2 events	1904	1968	1854	1755	1769
	2%	2%	2%	2%	2%
grade 3 events	857	979	758	831	872
	1%	1%	0%	1%	1%
grade 4 events	807	955	789	841	850
	1%	1%	1%	1%	1%
grade 5 events	2614	3054	2447	3140	3105
	3%	4%	3%	3%	3%
grade 6 events	1472	1773	1436	1499	1659
	2%	2%	1%	1%	2%
grade 7 events	60488	61491	68331	68220	68828
	85%	83%	87%	86%	86%

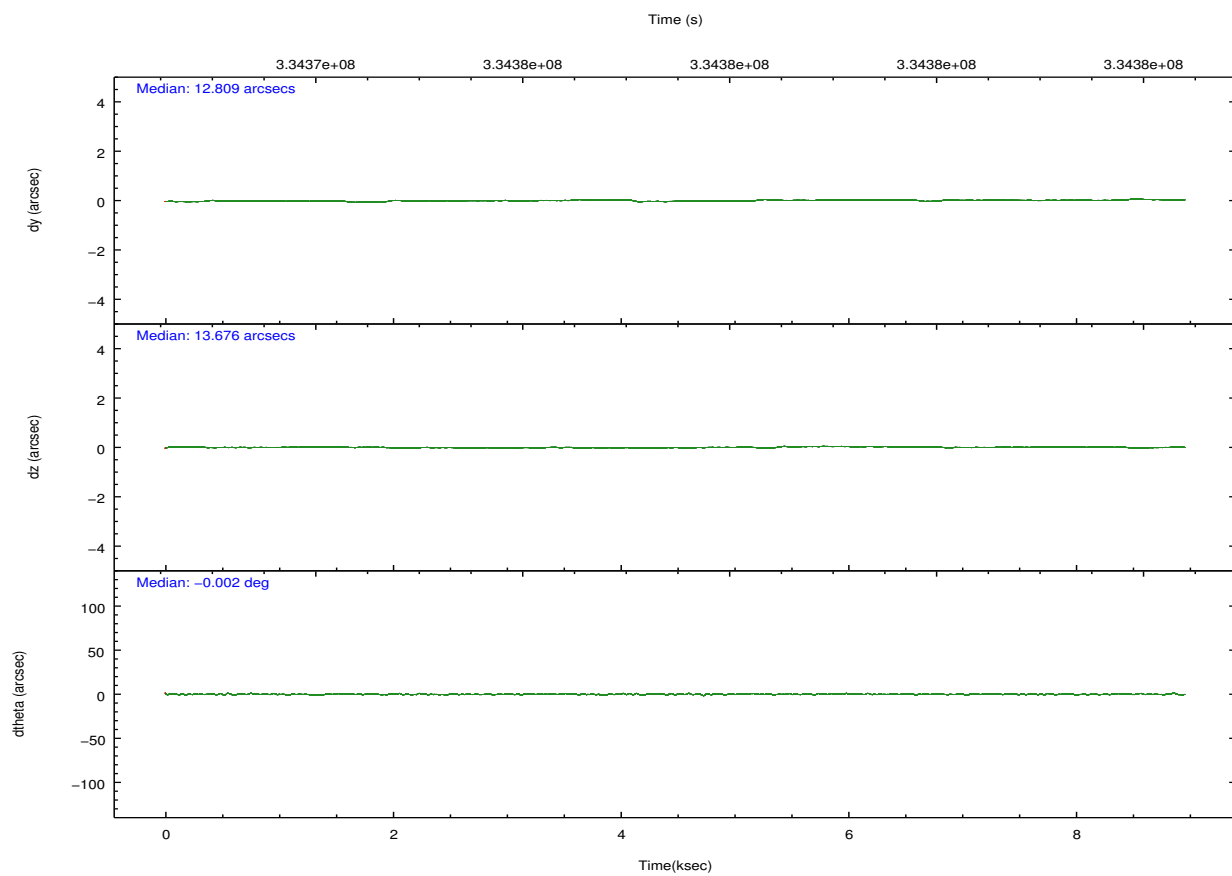
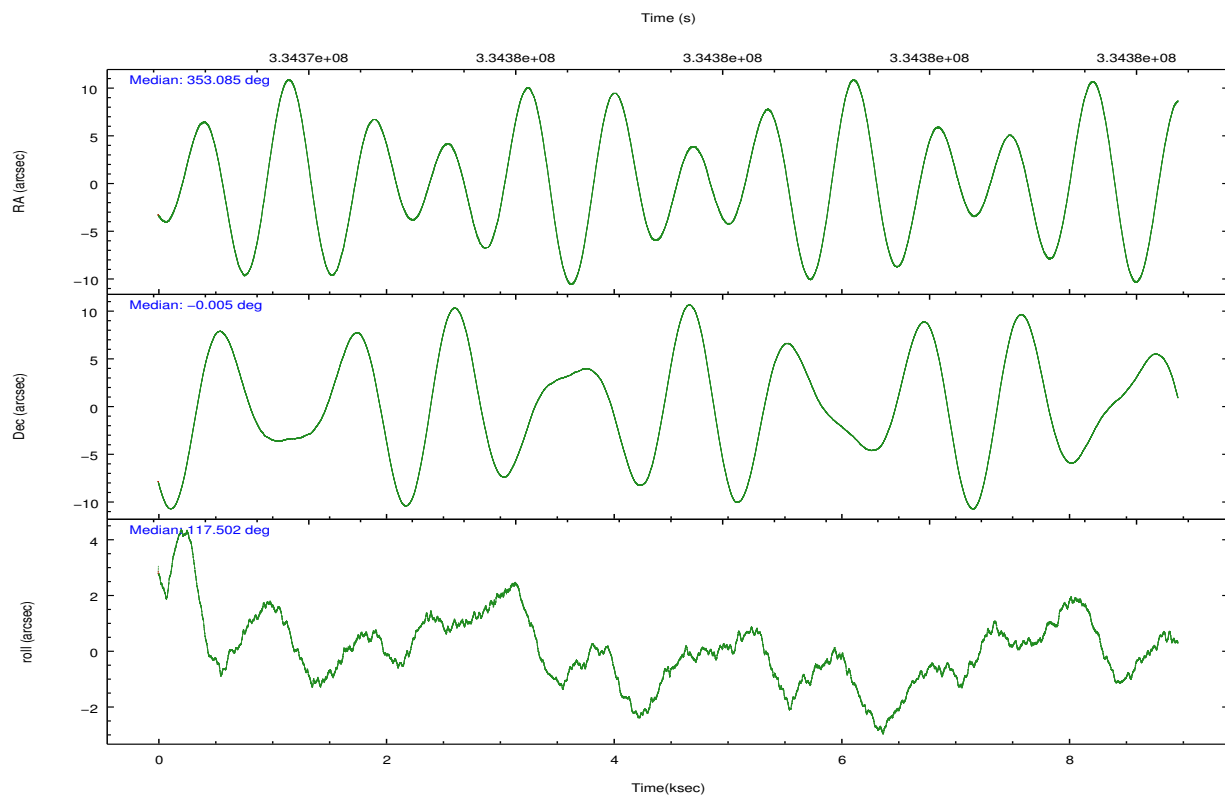


## 2.2 Compared Parameters

Parameter	Planned	Actual	Parameter	Planned	Actual
Instrument	ACIS	ACIS	Obspar format version number	7	7
Detector	ACIS-01236	ACIS-01236	Obspar file type	PREDICTED	ACTUAL
Grating	NONE	NONE	Obspar update status	NONE	UPDATED
Data mode	VFAINT	VFAINT	CCD I0 on	Y	Y
Observation mode	POINTING	POINTING	CCD I1 on	Y	Y
[deg] Pointing RA	353.107863	353.0845858938766	CCD I2 on	Y	Y
[deg] Pointing Dec	-0.019966	-0.005294256026015381	CCD I3 on	Y	Y
[deg] Pointing Roll	117.300010	117.5086914504852	CCD S0 on	N	N
[mm] SIM focus pos	-0.782348	-0.7809083437167272	CCD S1 on	N	N
[mm] SIM defocus	0	0.001439871863259334	CCD S2 on	O1	Y
[mm] SIM translation stage pos	-233.592463	-233.5874344608287	CCD S3 on	N	N
[mm] SIM translation stage offset	0	-0.005018542100998502	CCD S4 on	N	N
[s] Observation start time (MET)	334373174.184000	334372779.70815	CCD S5 on	N	N
Observation start date	2008-08-06T01:25:09	2008-08-06T01:19:39	Number of optional ACIS chips dropped	0	0
[s] Observation end time (MET)	334381945.184000	334382082.6086	On-chip summing requested	N	N
Observation end date	2008-08-06T03:51:20	2008-08-06T03:54:42	Subarray requested	NONE	NONE
Read mode	TIMED	TIMED	Alternating exposures requested	N	N
			[s] Primary exposure time	0.000000	3.1

## 2.3 Aspect



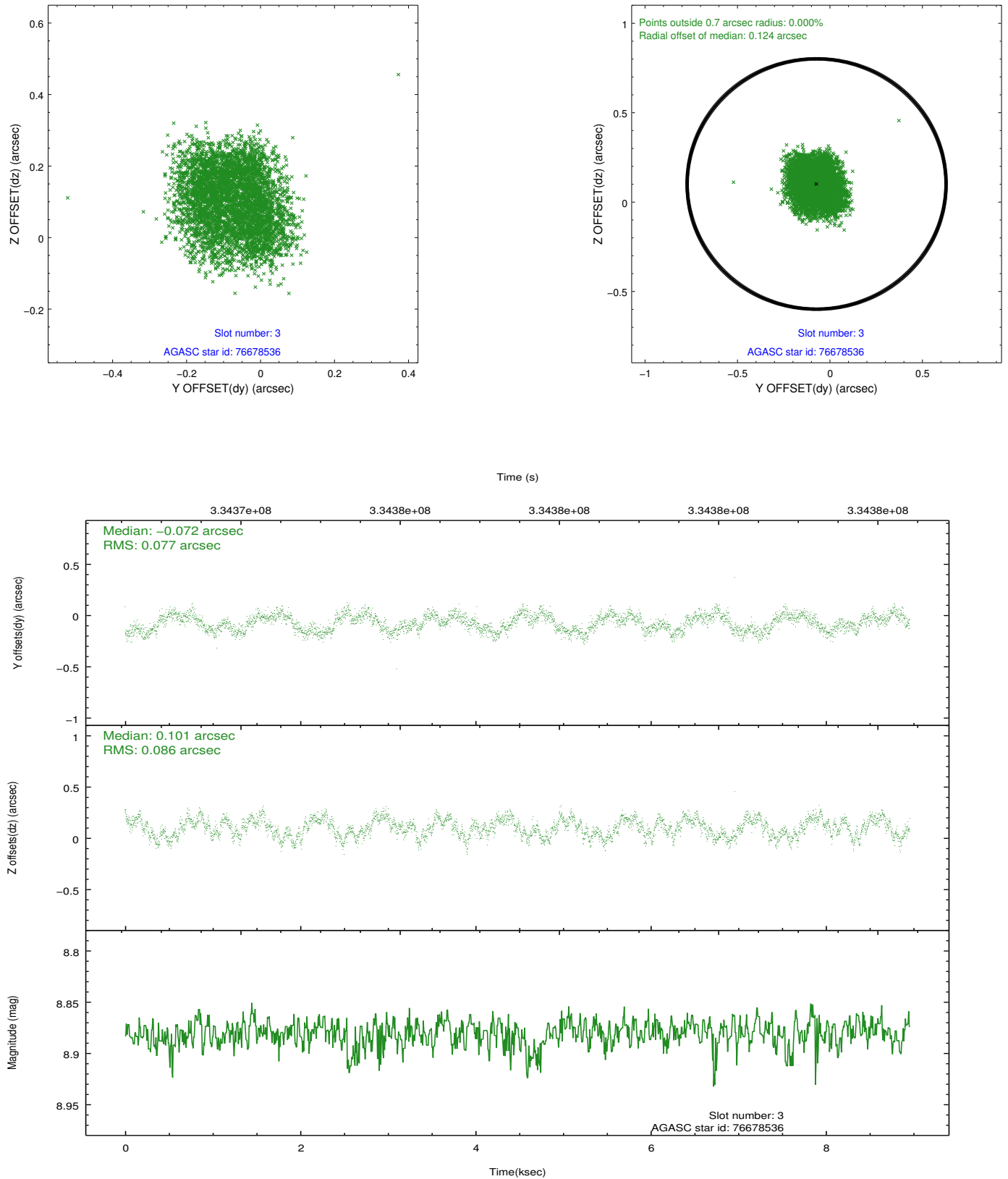


### Slot Statistics

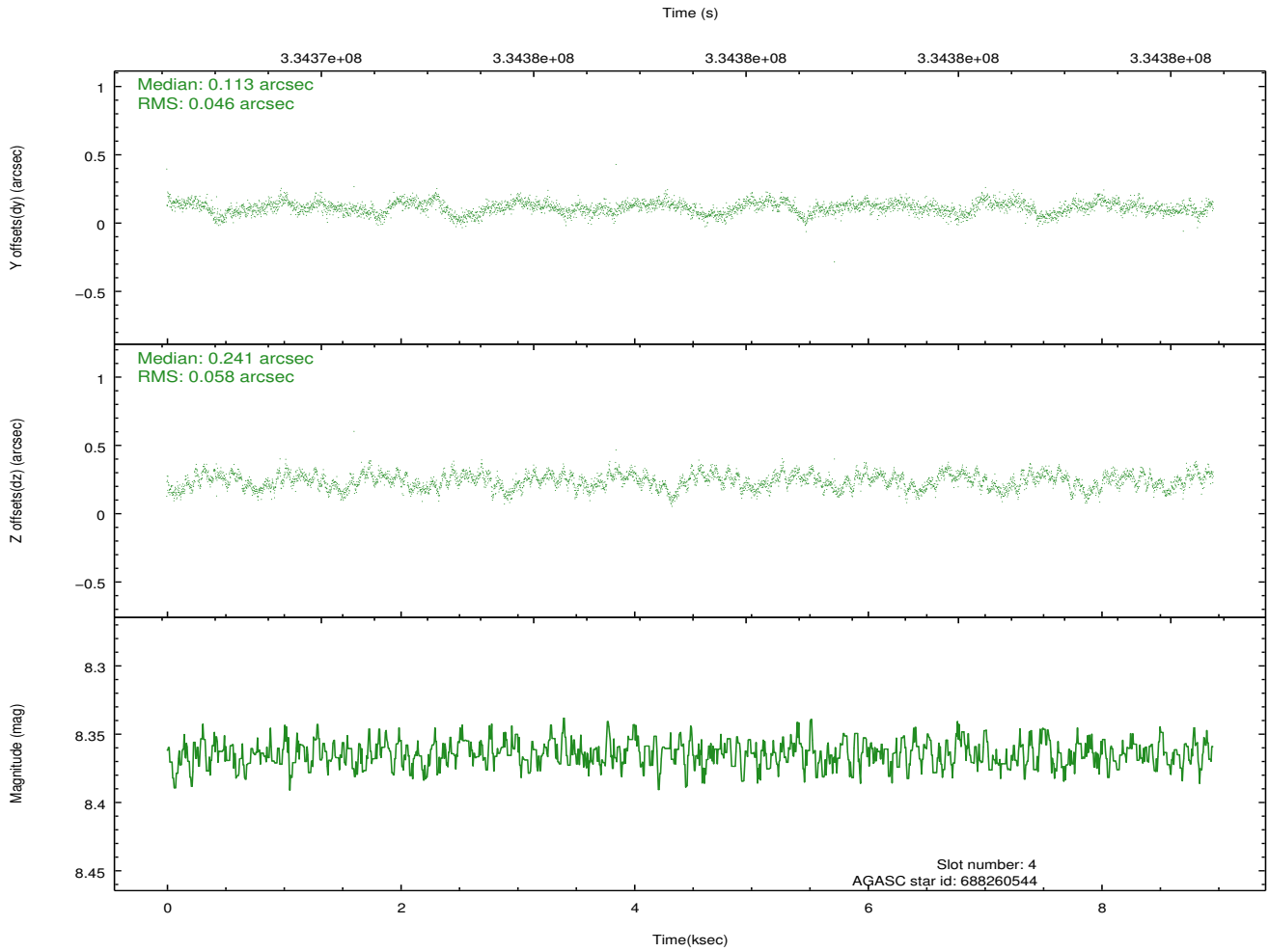
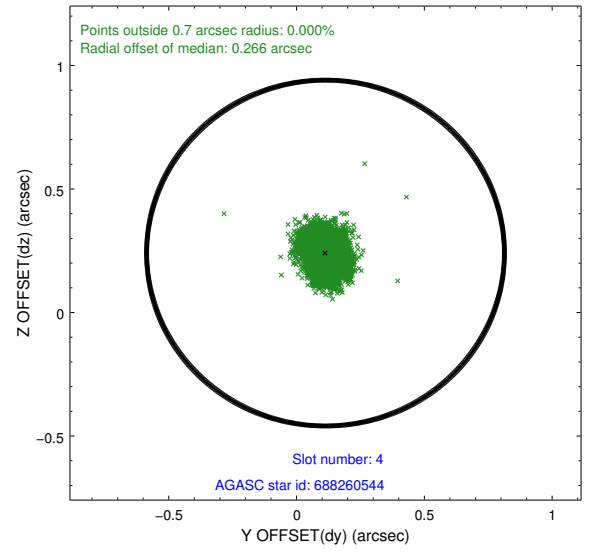
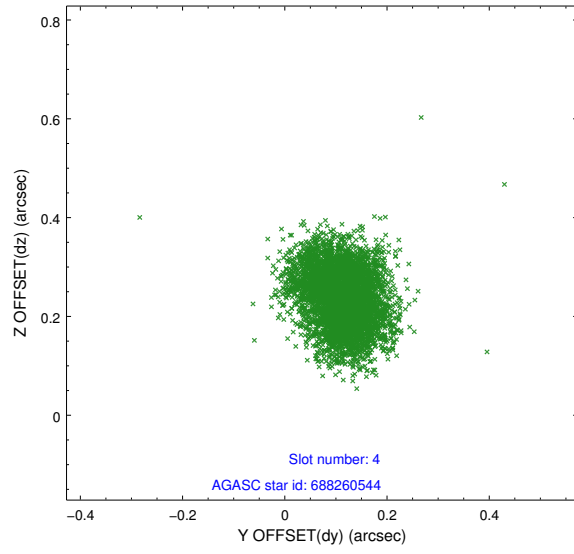
slot	status	id	mag	n_pts	med_dy	med_dz	dr1	dr2	ra	dec	mean_y	mean_z
0	FID	ACIS-I-1	7.06	2186	0.013	0.034	0.006	0.011	0.000000	0.000000	926.74	-837.20
1	FID	ACIS-I-5	7.05	2186	-0.177	0.034	0.006	0.011	0.000000	0.000000	-1821.24	1059.96
2	FID	ACIS-I-6	7.06	2186	0.074	0.003	0.006	0.010	0.000000	0.000000	391.65	1705.14
3	GUIDE	76678536	8.88	4370	-0.072	0.101	0.127	0.184	353.237558	0.180446	426.96	-745.65
4	GUIDE	688260544	8.36	4370	0.113	0.241	0.079	0.125	353.530418	-0.423696	-1988.92	-685.25
5	GUIDE	688264664	7.87	4370	0.041	-0.255	0.058	0.097	352.757580	-0.596012	-1265.10	2071.23
6	GUIDE	688265896	9.14	4369	-0.194	-0.221	0.091	0.146	352.587516	-0.177872	353.28	1925.73
7	GUIDE	688265920	8.11	4367	0.114	0.139	0.083	0.124	353.620473	-0.325855	-1824.75	-1134.24

## 2.4 Star Slots

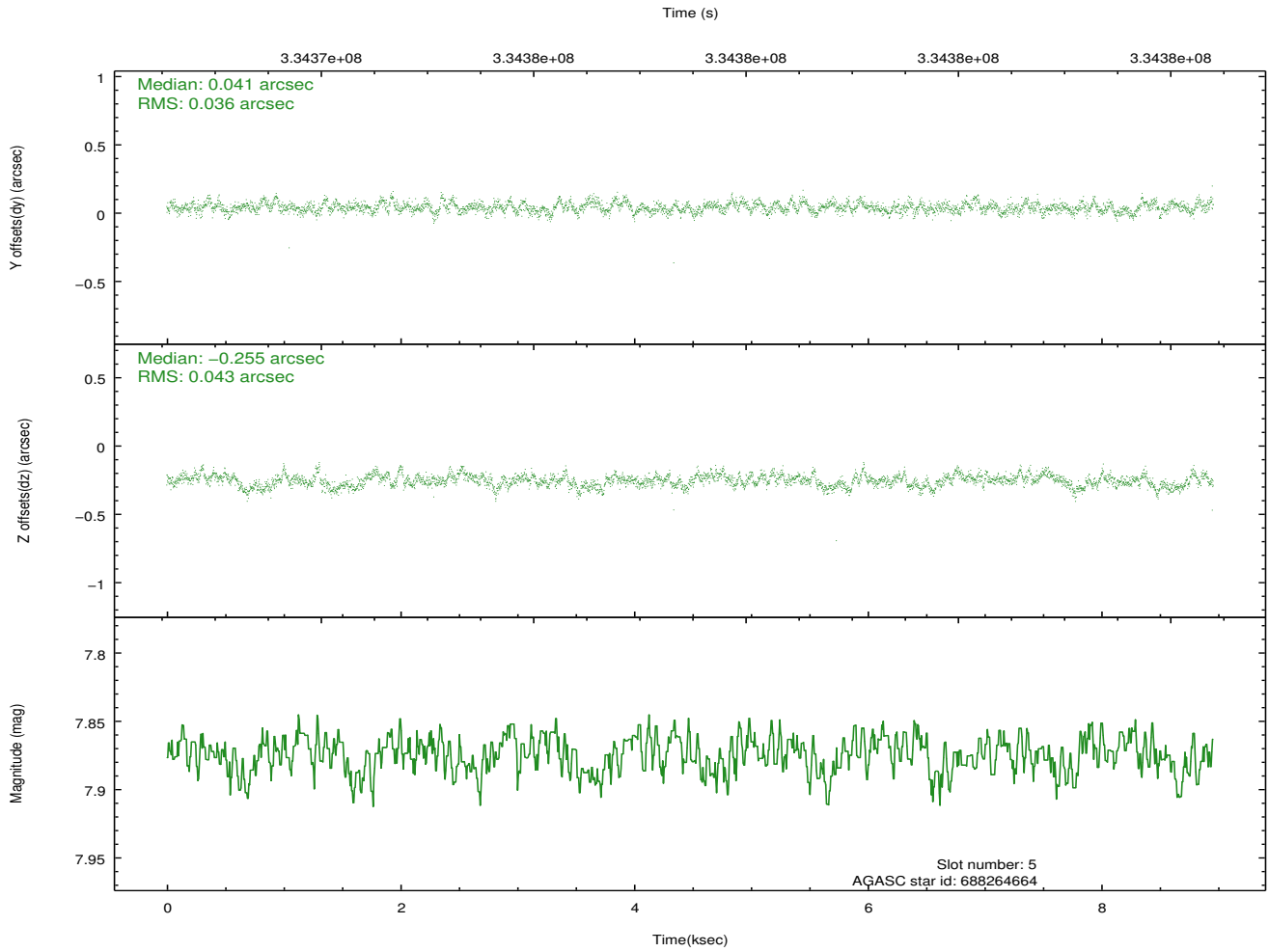
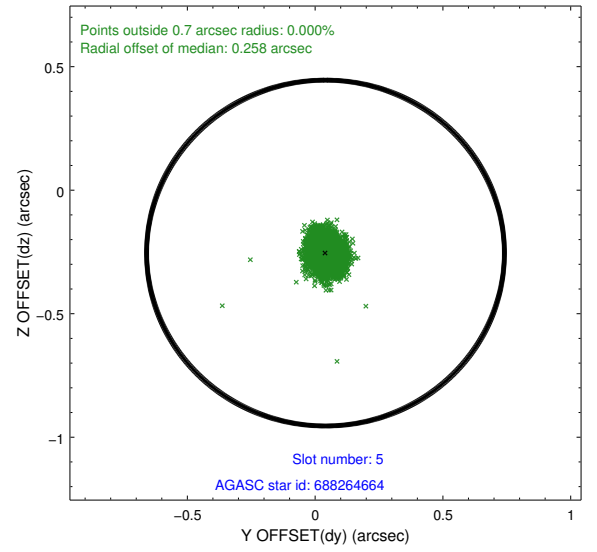
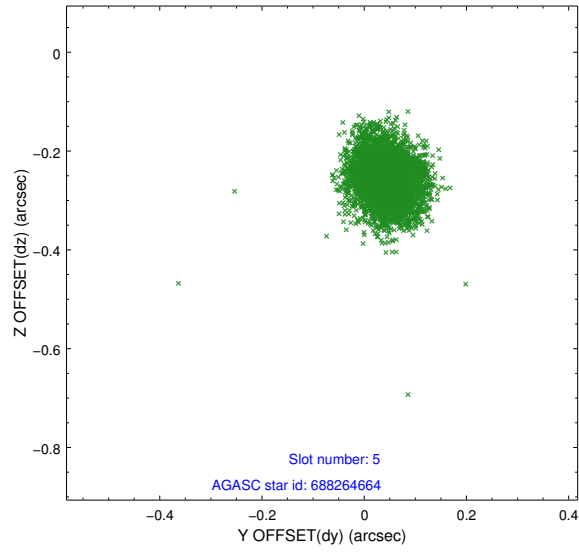
### 2.4.1 Slot 3



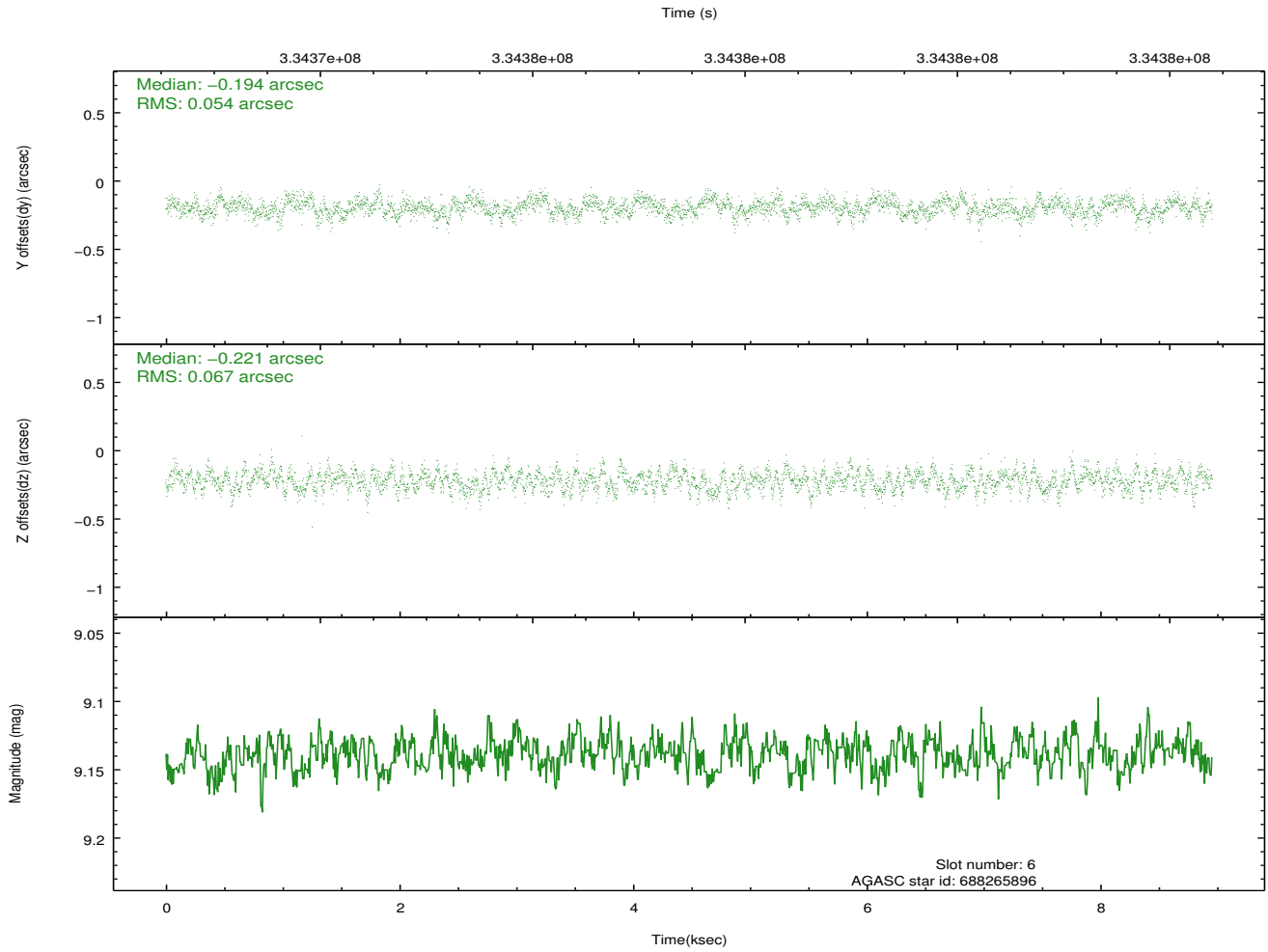
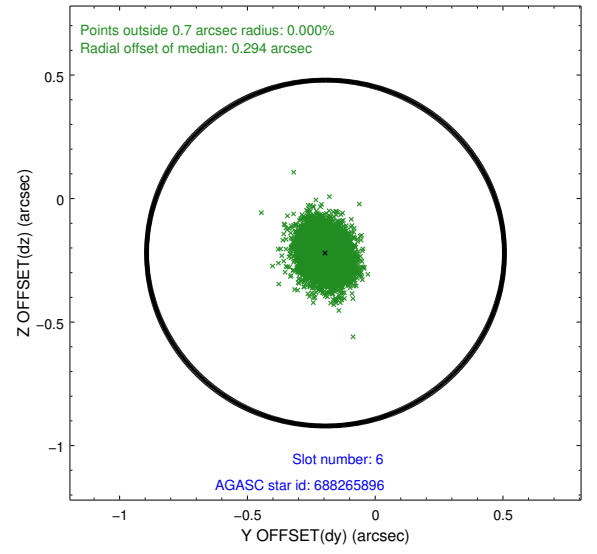
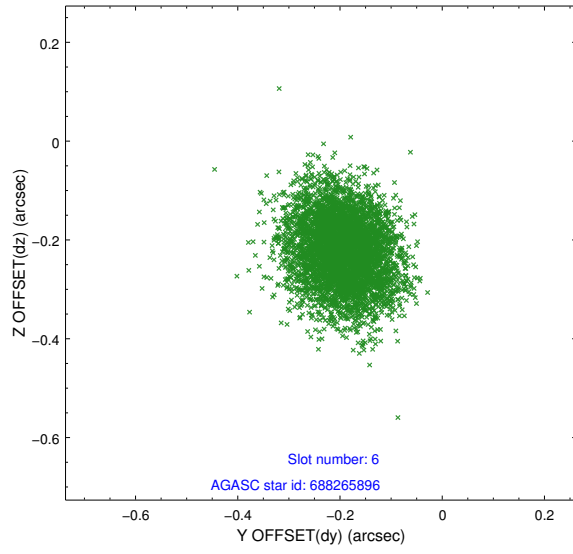
## 2.4.2 Slot 4



### 2.4.3 Slot 5

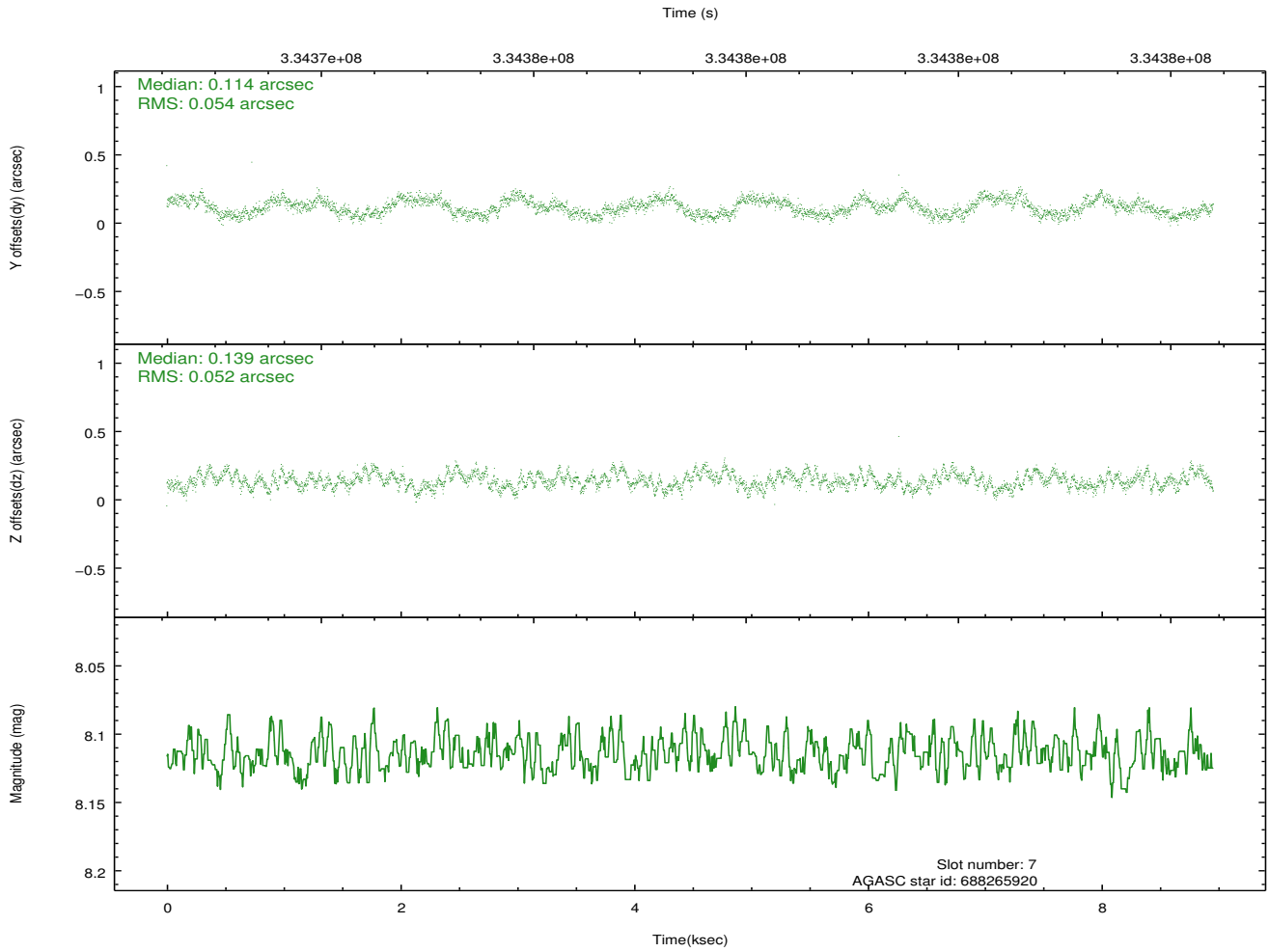
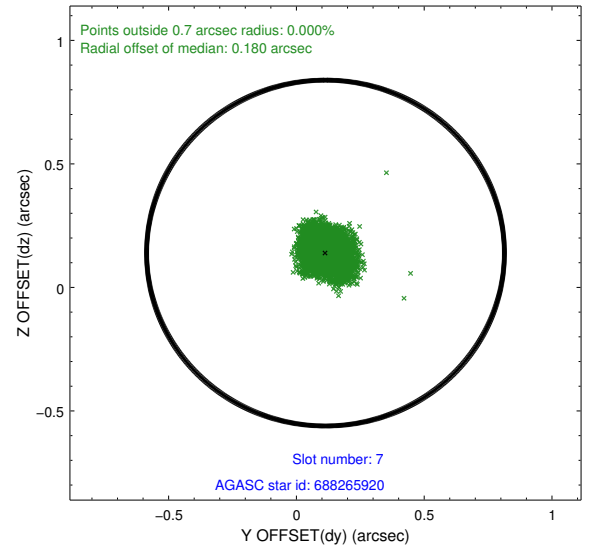
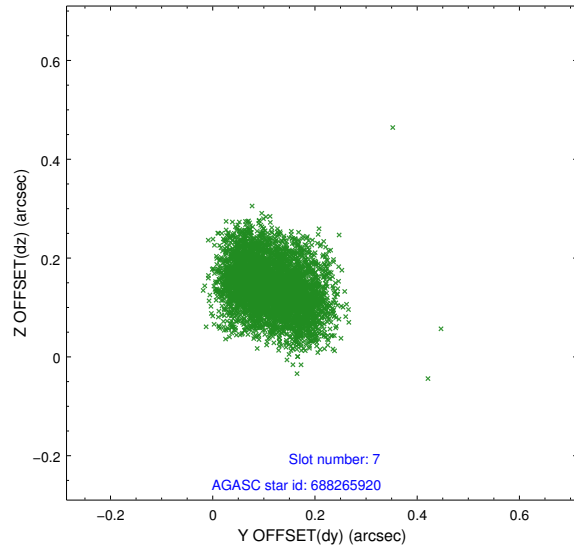


## 2.4.4 Slot 6



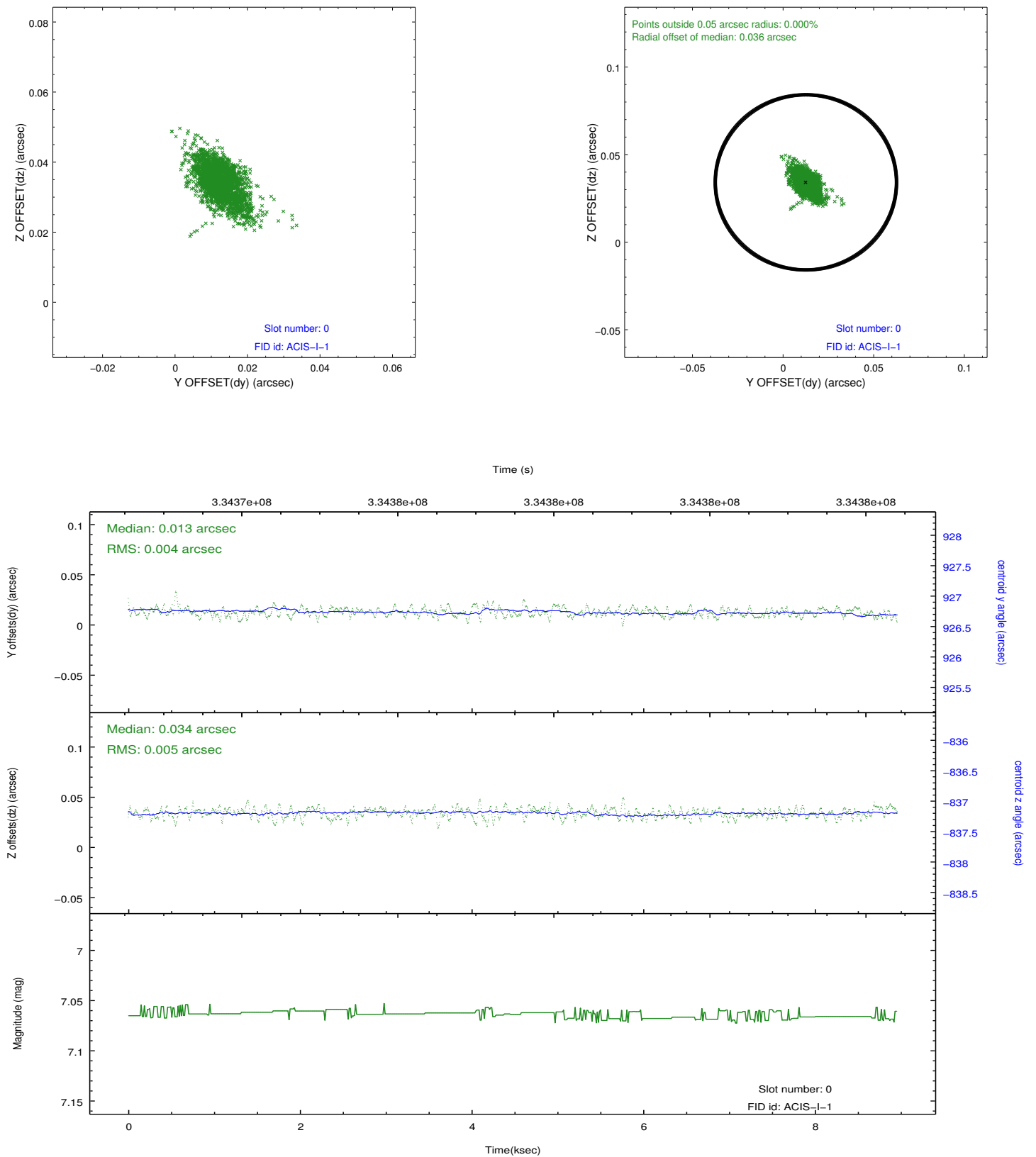


## 2.4.5 Slot 7

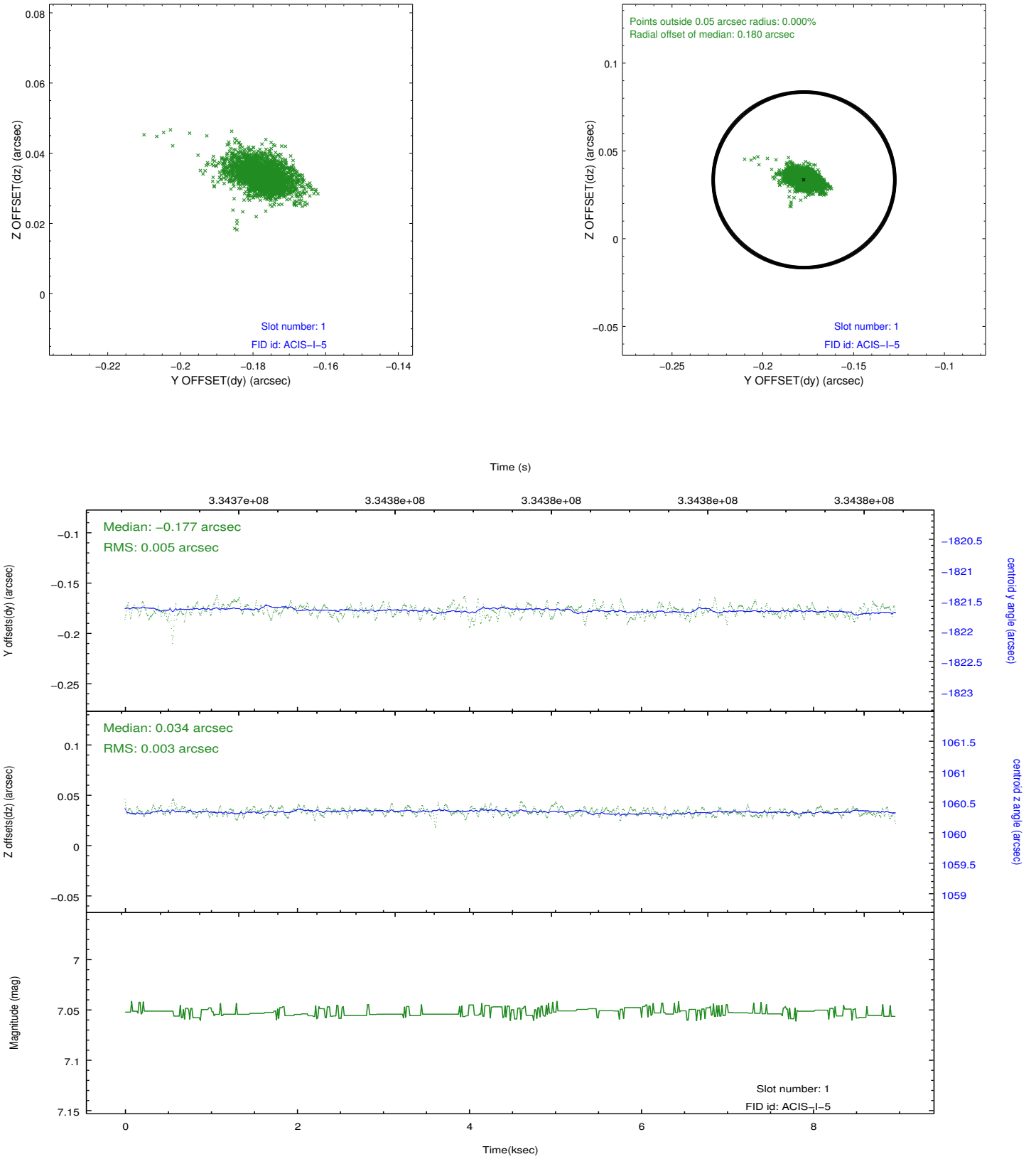


## 2.5 FID Slots

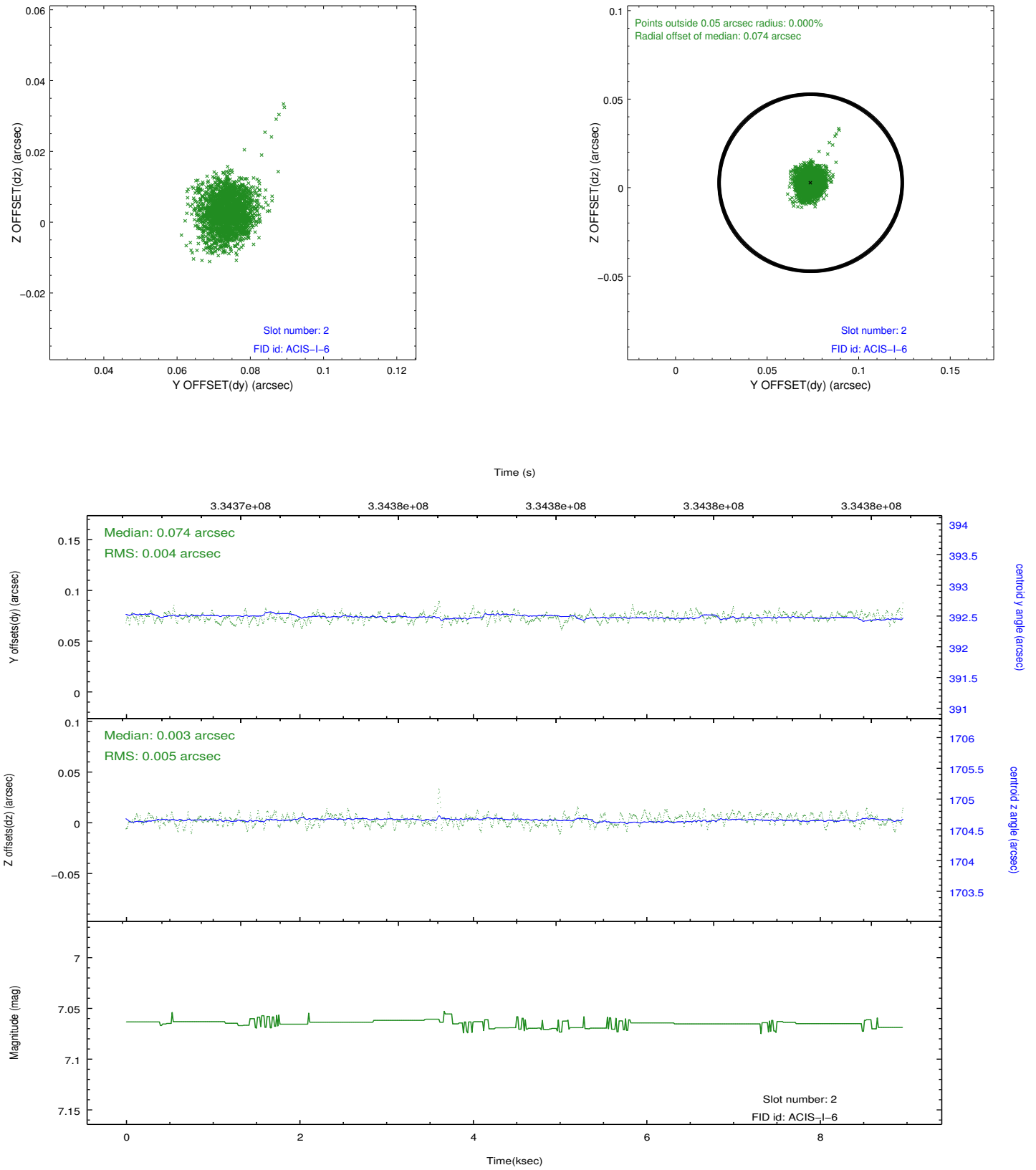
### 2.5.1 Slot 0



## 2.5.2 Slot 1



### 2.5.3 Slot 2



## A Summary

### A.1 Status

V&V Scientist	Beth Sundheim
V&V Date (YYYY-MM-DD)	2012.05.27
V&V Edition	1
V&V Disposition and Status	OK
V&V Charge Time	8.95900006

### A.2 Comments