

V&V Reference Report

L2 ASCDS Version : 8.4.4

Observation 8607 - L2 Version 3
Chandra X-Ray Center

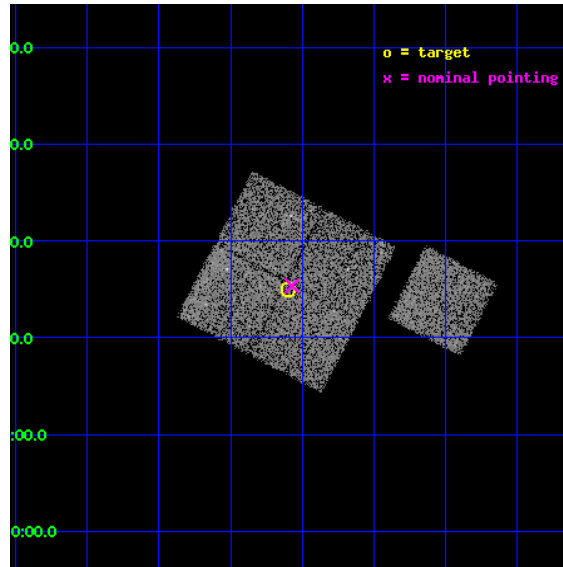
L2 Processing Date : May 20 2012

Contents

1	Front	2
2	OBI	3
2.1	OBI	3
2.1.1	Images	3
2.1.2	Bias	3
2.1.3	Parameters	4
2.1.4	Events	4
2.2	Compared Parameters	5
2.3	Aspect	6
2.4	Star Slots	9
2.4.1	Slot 3	9
2.4.2	Slot 5	10
2.4.3	Slot 6	11
2.4.4	Slot 7	12
2.5	FID Slots	13
2.5.1	Slot 0	13
2.5.2	Slot 1	14
2.5.3	Slot 2	15
A	Summary	16
A.1	Status	16
A.2	Comments	16

1 Front

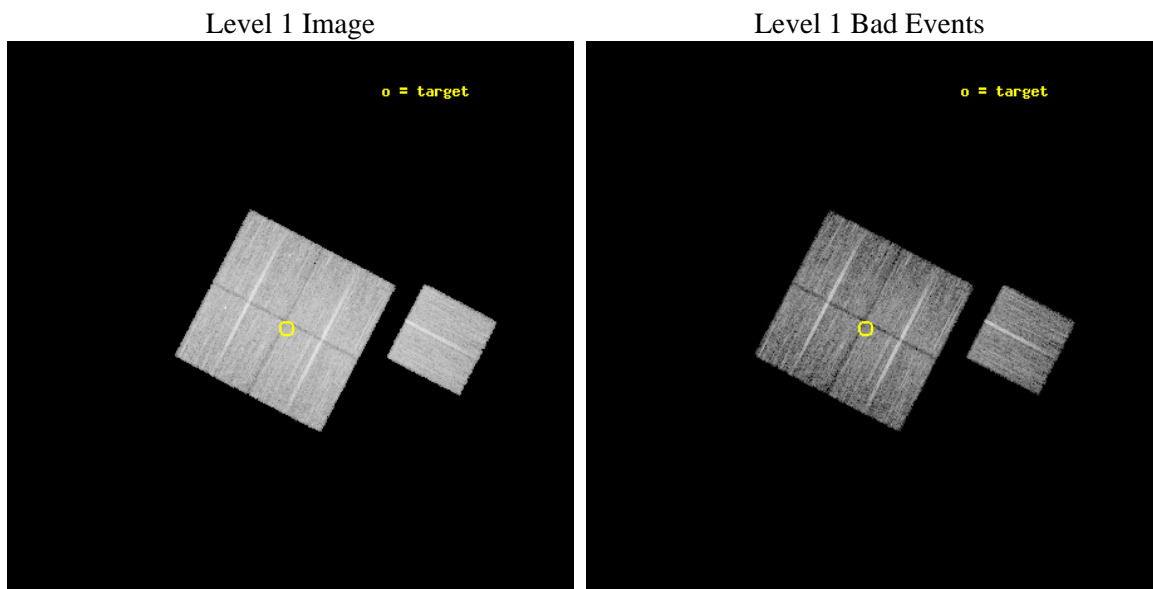
seq_num	900744	Sequence number
obs_id	8607	Observation id
title	Chandra Observations of the DEEP2 Fields	Proposal title
observer	Dr. Stephen Murray	Principal investigator
object	DEEP2 Field 3	Source name
dtcycle	0	
cycle	P	events from which exps? Prim/Second/Both
ra_targ	351.89874	Observer's specified target RA [deg]
dec_targ	0.250068	Observer's specified target Dec [deg]
ra_nom	351.89299226026	Nominal RA [deg]
dec_nom	0.25577714428114	Nominal Dec [deg]
roll_nom	117.50872083035	Nominal Roll [deg]
revision	3	Processing version of data
ontime	8949.5770779848	Sum of GTIs [s]
livetime	8832.6442648781	Livetime [s]
ontime0	8955.8590884209	Sum of GTIs [s]
ontime1	8952.7180683613	Sum of GTIs [s]
ontime2	8959.000068903	Sum of GTIs [s]
ontime3	8949.5770779848	Sum of GTIs [s]
ontime6	8959.000068903	Sum of GTIs [s]
l2events	31677	Number of level 2 events



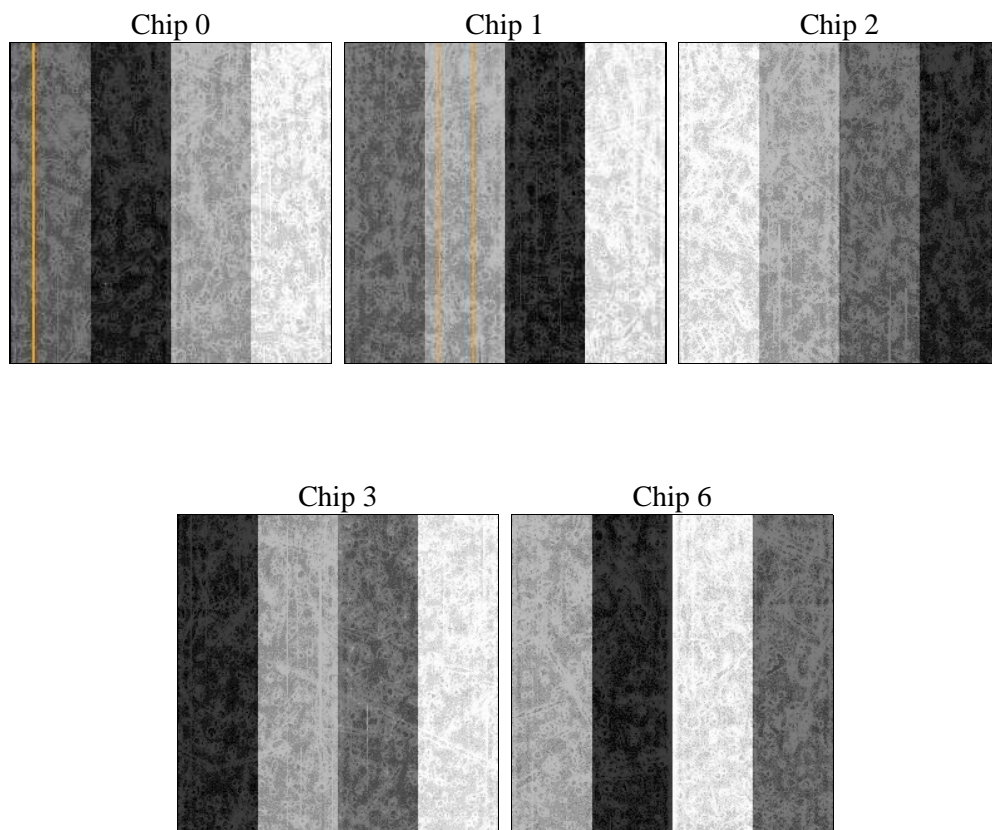
2 OBI

2.1 OBI

2.1.1 Images



2.1.2 Bias



2.1.3 Parameters

obi_num	0	Obi number	sched_exp_time	8771.000000	[s] Scheduled observation exposure time
ascdsver	8.4.4	Processing system revision	ontime	8949.5770779848	Sum of GTIs [s]
caldbver	4.4.9	 	ontime0	8955.8590884209	Sum of GTIs [s]
date	2012-05-20T17:26:13	Date and time of file creation	ontime1	8952.7180683613	Sum of GTIs [s]
revision	3	Processing version of data	ontime2	8959.000068903	Sum of GTIs [s]
			ontime3	8949.5770779848	Sum of GTIs [s]
			ontime6	8959.000068903	Sum of GTIs [s]
			l1events	375393	Number of level 1 events

2.1.4 Events

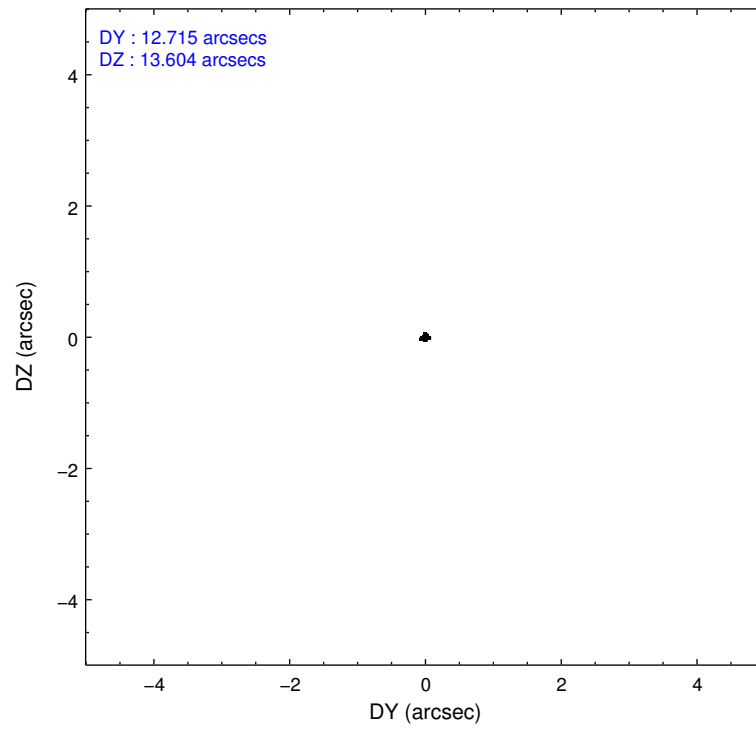
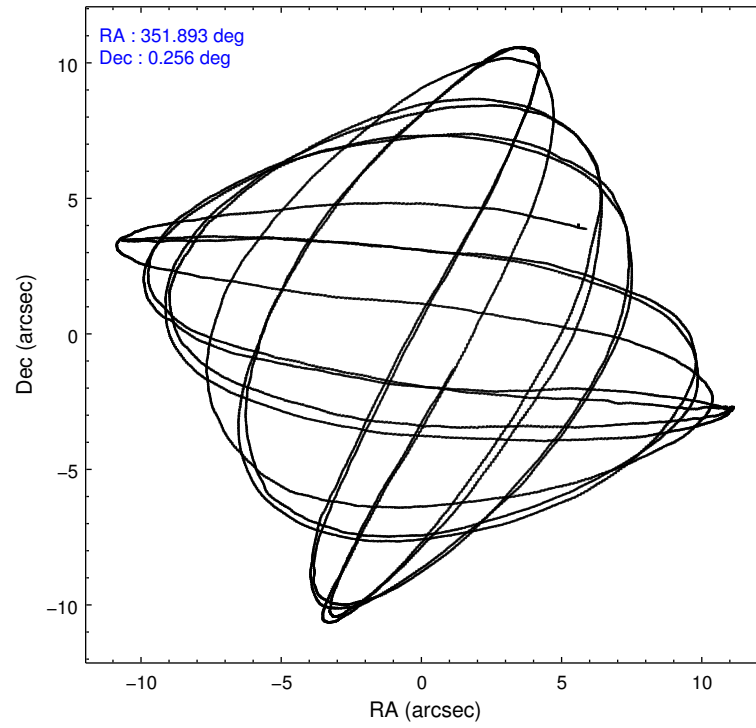
	ccd 0	ccd 1	ccd 2	ccd 3	ccd 6
level 1 events	72152	72894	79865	74464	76018
rejected events	64619	64211	72643	67547	68391
rejected %	89%	88%	90%	90%	89%

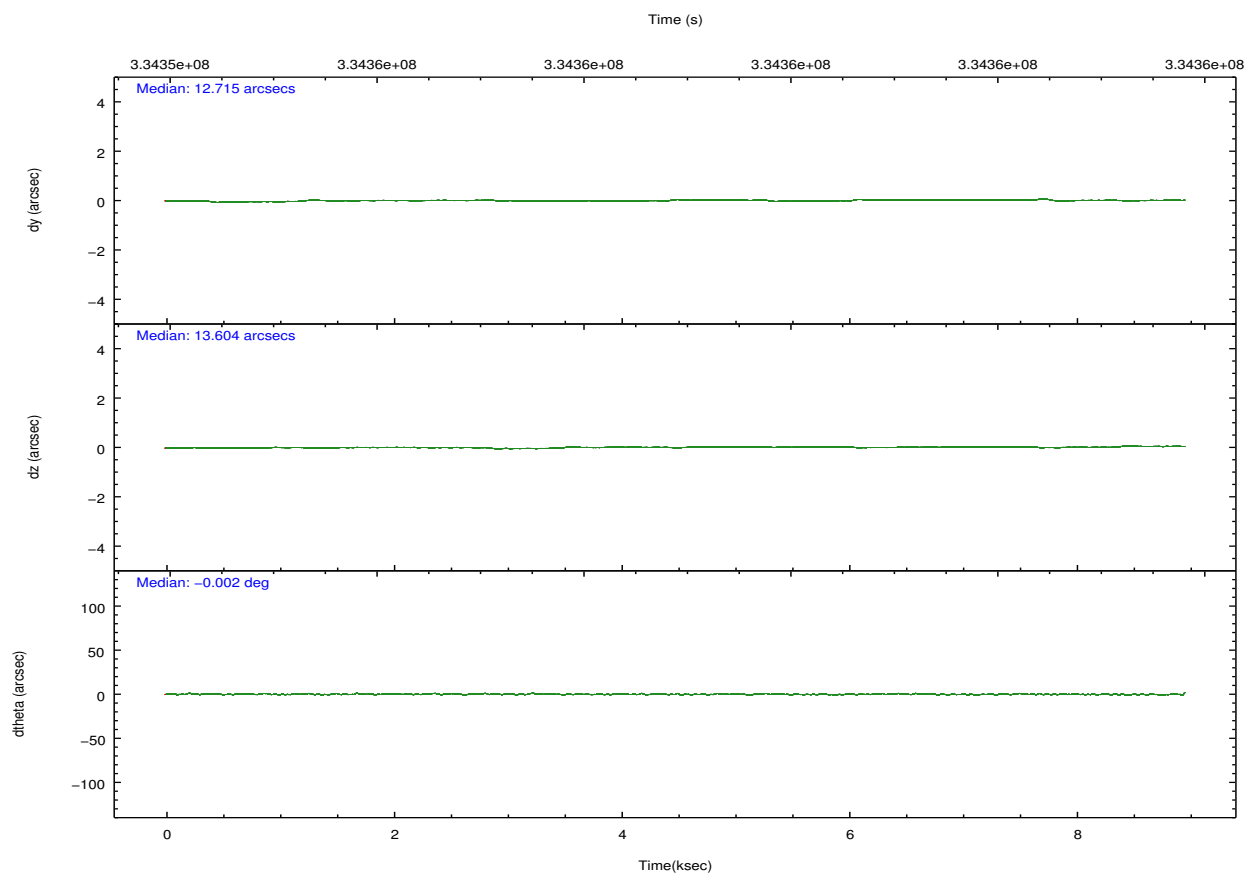
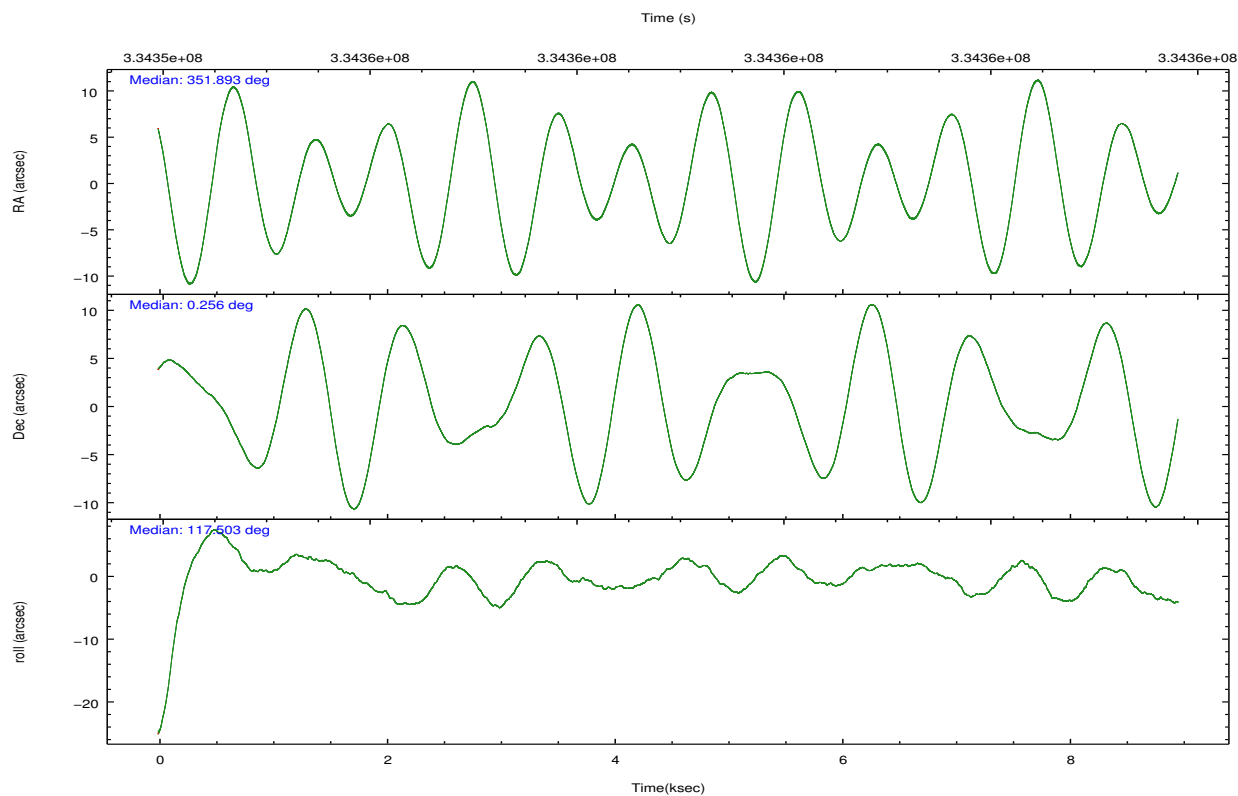
	ccd 0	ccd 1	ccd 2	ccd 3	ccd 6
grade 0 events	2793	3369	2786	2497	2760
	3%	4%	3%	3%	3%
grade 1 events	38	34	52	34	25
	0%	0%	0%	0%	0%
grade 2 events	1869	2042	1746	1590	1729
	2%	2%	2%	2%	2%
grade 3 events	897	958	775	843	859
	1%	1%	0%	1%	1%
grade 4 events	789	851	798	840	828
	1%	1%	0%	1%	1%
grade 5 events	2727	2968	2587	3162	3057
	3%	4%	3%	4%	4%
grade 6 events	1450	1776	1374	1410	1718
	2%	2%	1%	1%	2%
grade 7 events	61589	60896	69747	64088	65042
	85%	83%	87%	86%	85%

2.2 Compared Parameters

Parameter	Planned	Actual	Parameter	Planned	Actual
Instrument	ACIS	ACIS	Obspar format version number	7	7
Detector	ACIS-01236	ACIS-01236	Obspar file type	PREDICTED	ACTUAL
Grating	NONE	NONE	Obspar update status	NONE	UPDATED
Data mode	VFAINT	VFAINT	CCD I0 on	Y	Y
Observation mode	POINTING	POINTING	CCD I1 on	Y	Y
[deg] Pointing RA	351.916301	351.8929922602604	CCD I2 on	Y	Y
[deg] Pointing Dec	0.241126	0.2557771442811442	CCD I3 on	Y	Y
[deg] Pointing Roll	117.299931	117.5087208303545	CCD S0 on	N	N
[mm] SIM focus pos	-0.782348	-0.7809083437167272	CCD S1 on	N	N
[mm] SIM defocus	0	0.001439871863259334	CCD S2 on	O1	Y
[mm] SIM translation stage pos	-233.592463	-233.5874344608287	CCD S3 on	N	N
[mm] SIM translation stage offset	0	-0.005018542100998502	CCD S4 on	N	N
[s] Observation start time (MET)	334354574.184000	334354191.33224	CCD S5 on	N	N
Observation start date	2008-08-05T20:15:09	2008-08-05T20:09:51	Number of optional ACIS chips dropped	0	0
[s] Observation end time (MET)	334363345.184000	334363479.37019	On-chip summing requested	N	N
Observation end date	2008-08-05T22:41:20	2008-08-05T22:44:39	Subarray requested	NONE	NONE
Read mode	TIMED	TIMED	Alternating exposures requested	N	N
			[s] Primary exposure time	0.000000	3.1

2.3 Aspect



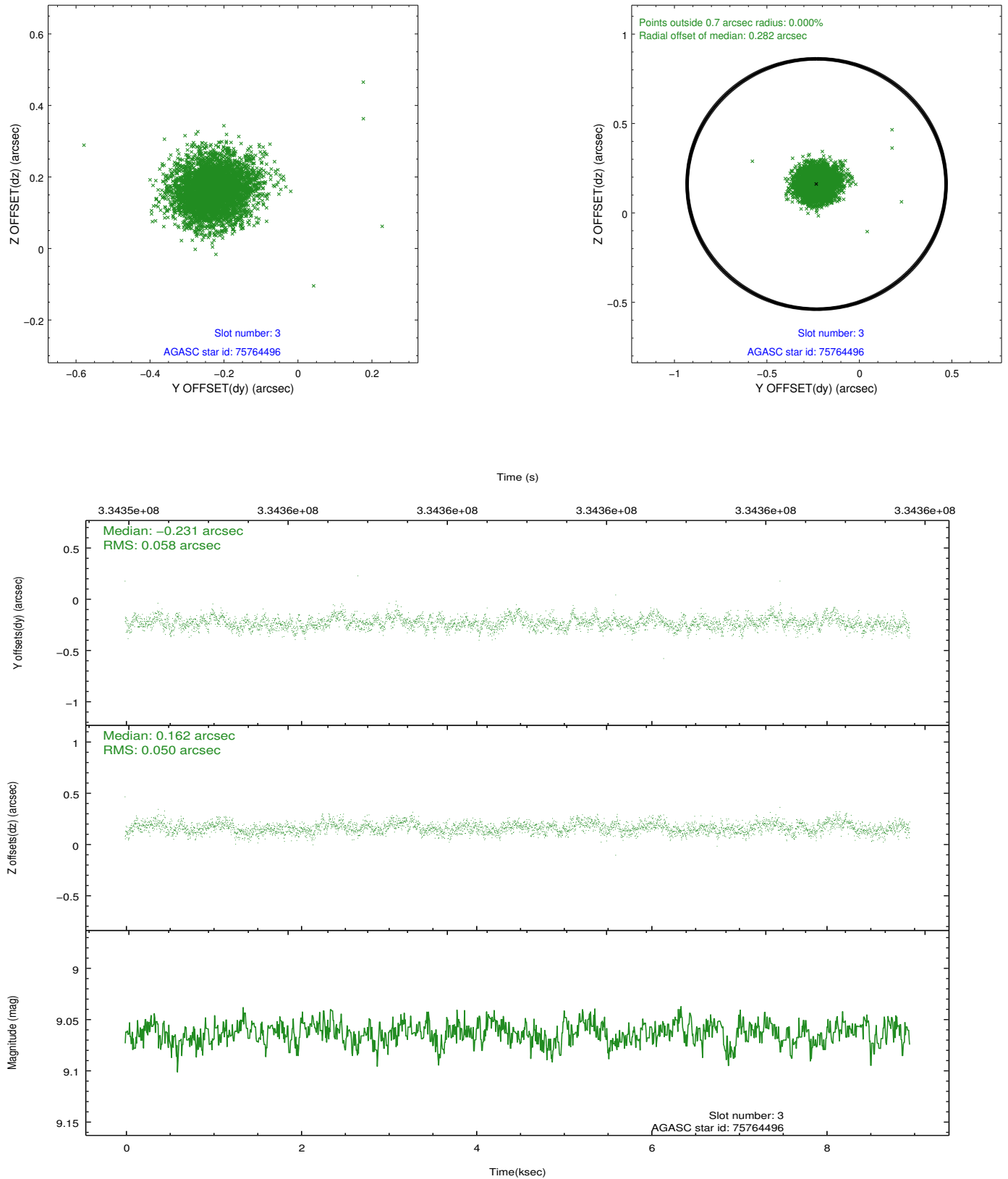


Slot Statistics

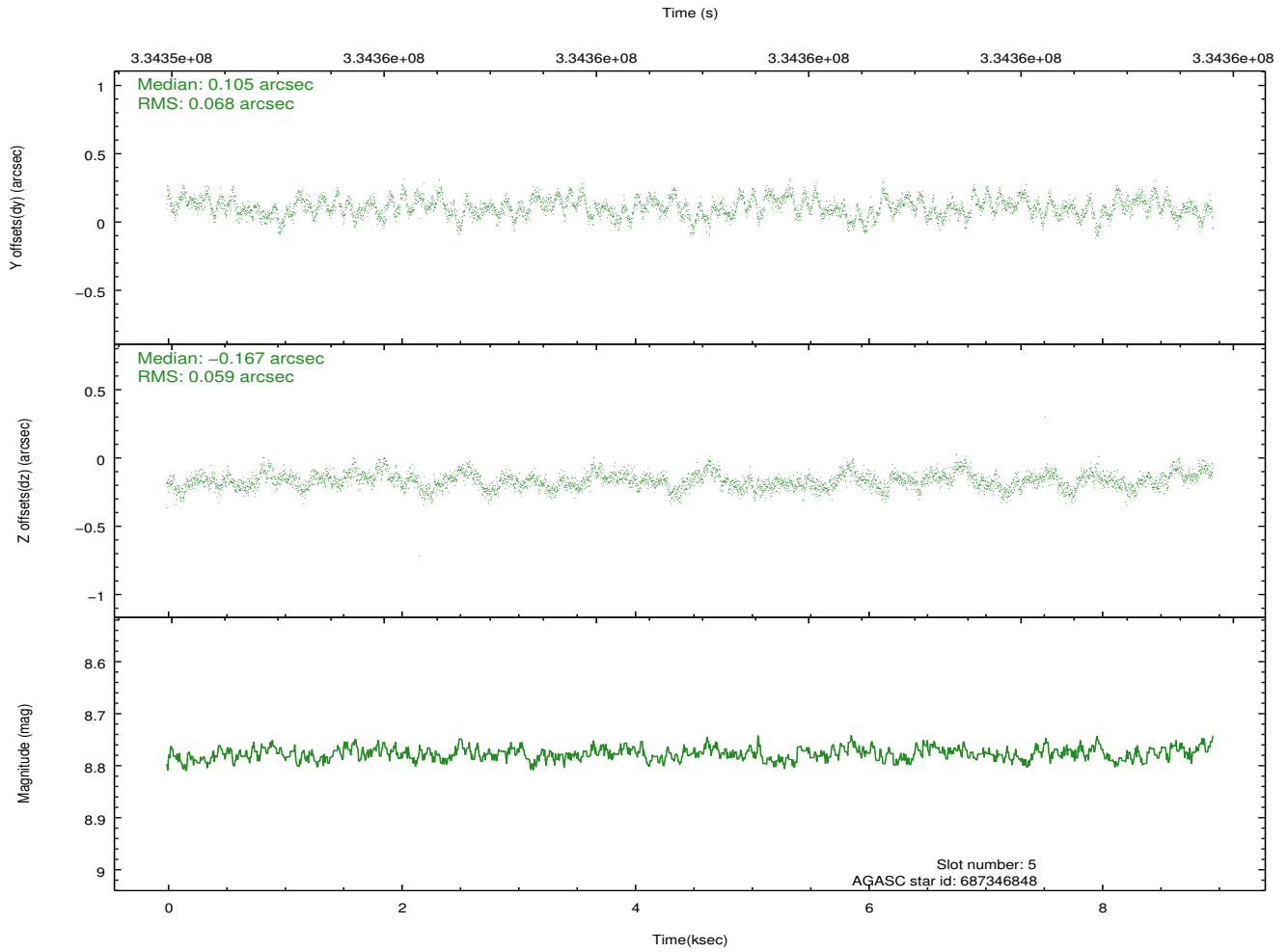
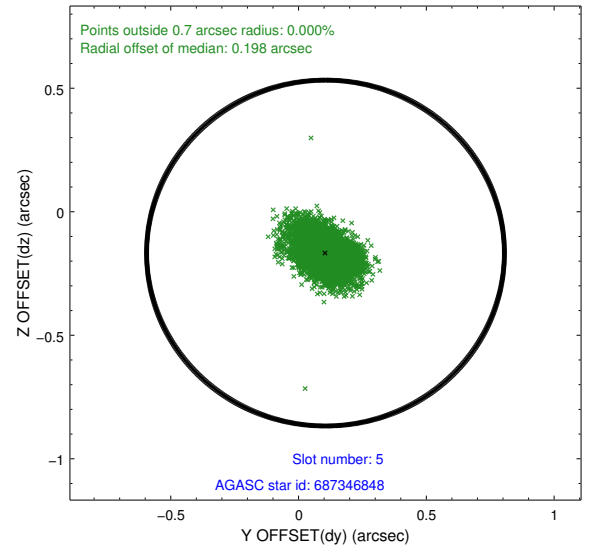
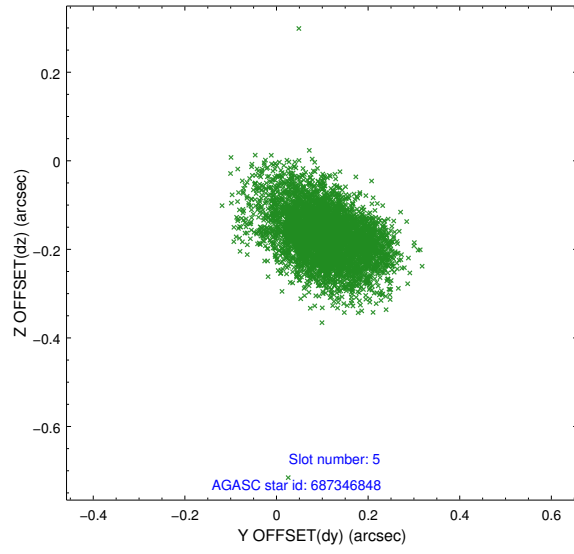
slot	status	id	mag	n_pts	med_dy	med_dz	dr1	dr2	ra	dec	mean_y	mean_z
0	FID	ACIS-I-1	7.06	2186	0.014	0.035	0.006	0.011	0.000000	0.000000	926.83	-837.12
1	FID	ACIS-I-5	7.05	2184	-0.171	0.037	0.006	0.011	0.000000	0.000000	-1821.14	1060.04
2	FID	ACIS-I-6	7.06	2186	0.066	-0.001	0.007	0.011	0.000000	0.000000	391.74	1705.21
3	GUIDE	75764496	9.06	4370	-0.231	0.162	0.081	0.128	351.852841	0.722290	1643.92	-590.93
4	OMITTED		0.00	0	0.000	0.000	0.000	0.000	0.000000	0.000000	0.00	0.00
5	GUIDE	687346848	8.78	4371	0.105	-0.167	0.095	0.160	351.544424	-0.463235	-1638.96	2352.31
6	GUIDE	687347656	9.60	4367	0.021	0.250	0.105	0.172	352.228641	-0.041094	-1418.68	-532.24
7	GUIDE	687348152	9.45	4370	0.108	-0.241	0.109	0.175	351.554637	-0.505254	-1790.80	2389.16

2.4 Star Slots

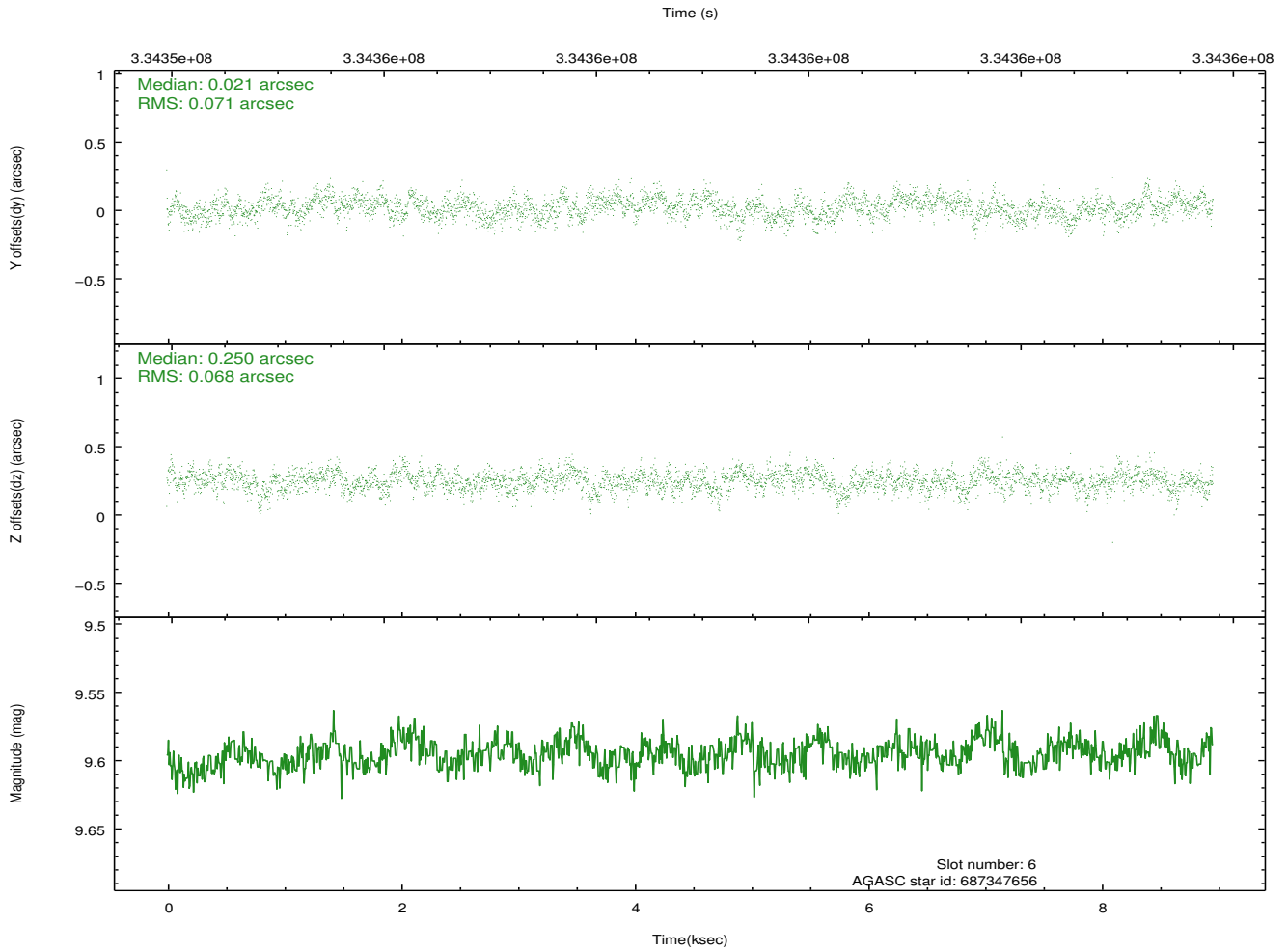
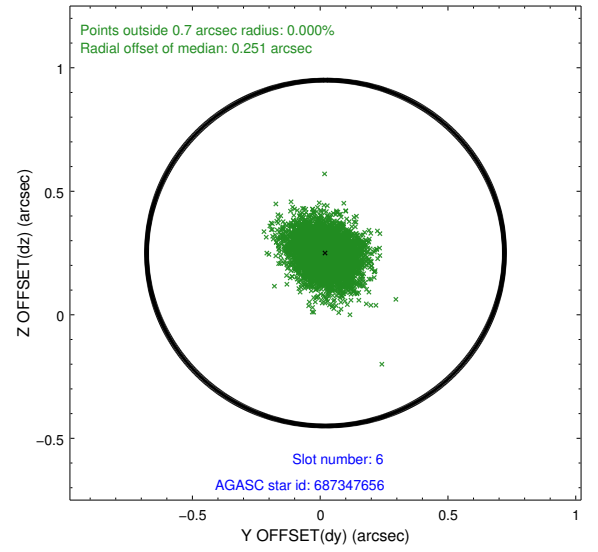
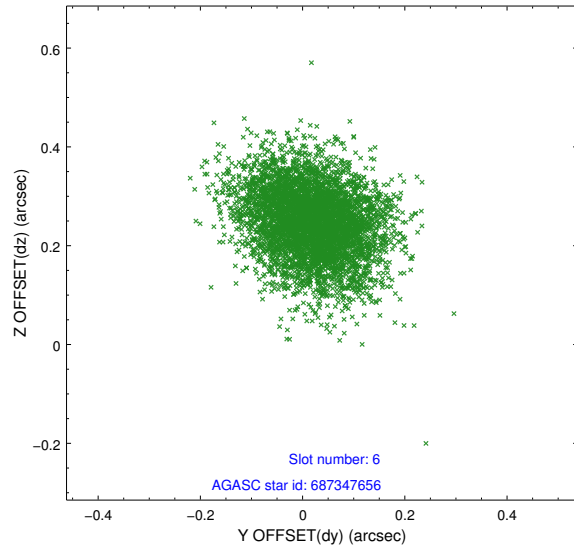
2.4.1 Slot 3



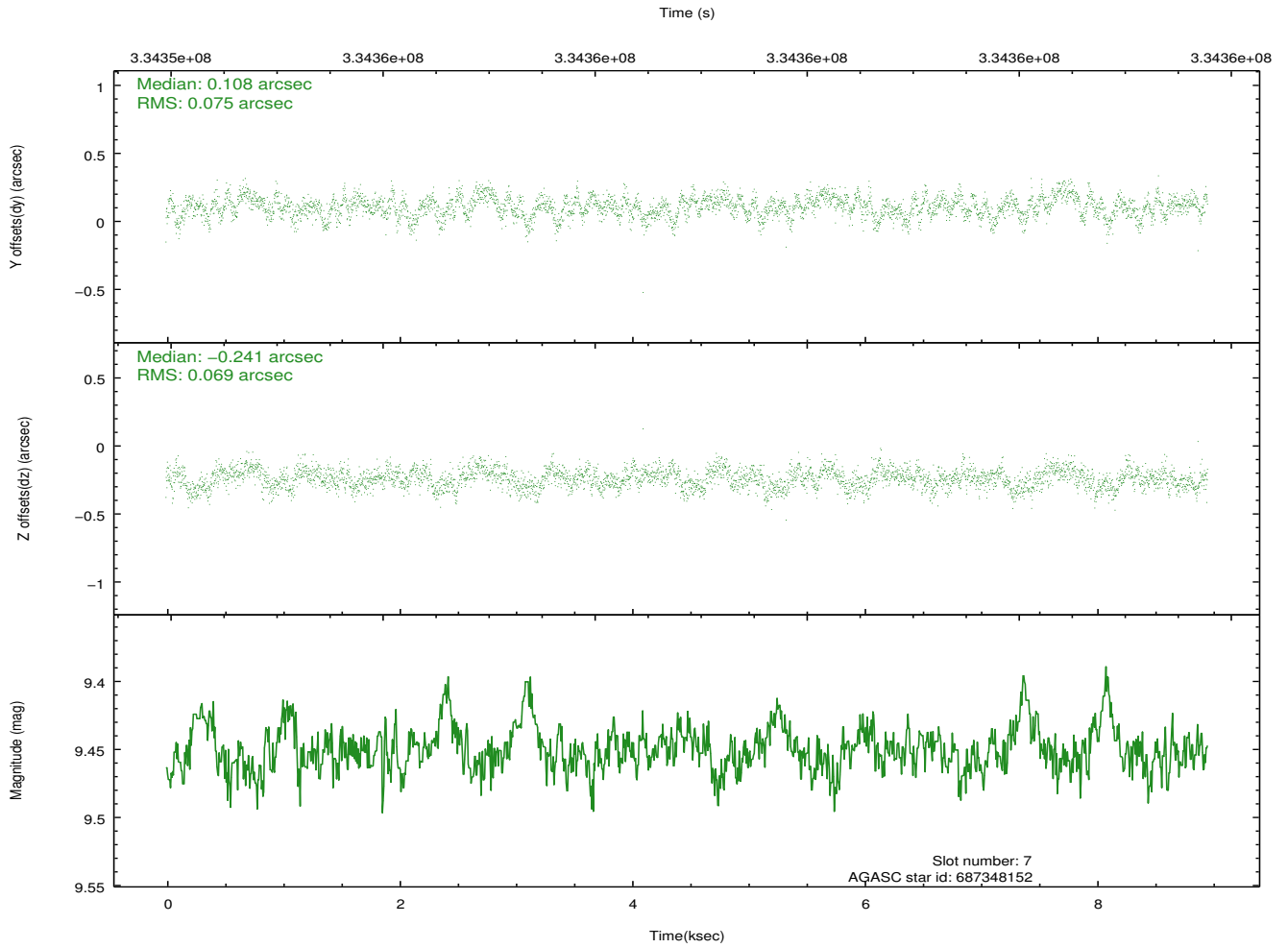
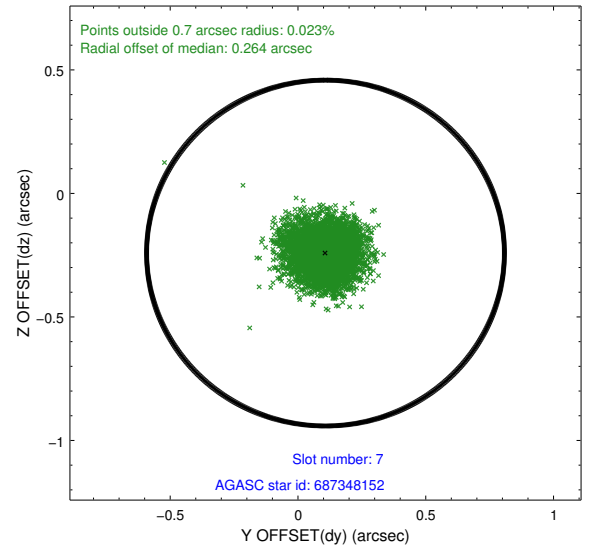
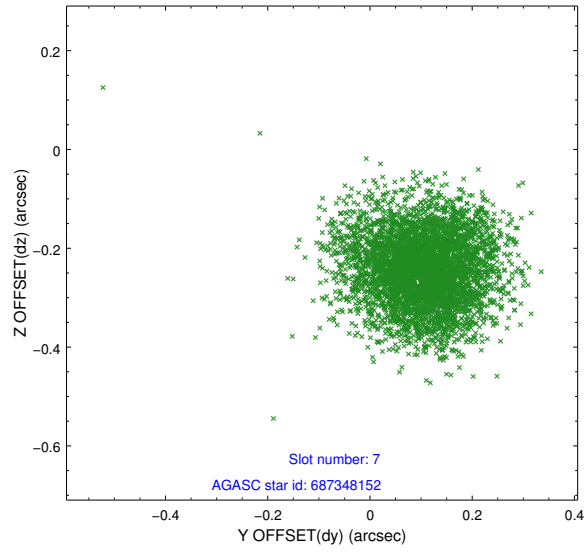
2.4.2 Slot 5



2.4.3 Slot 6

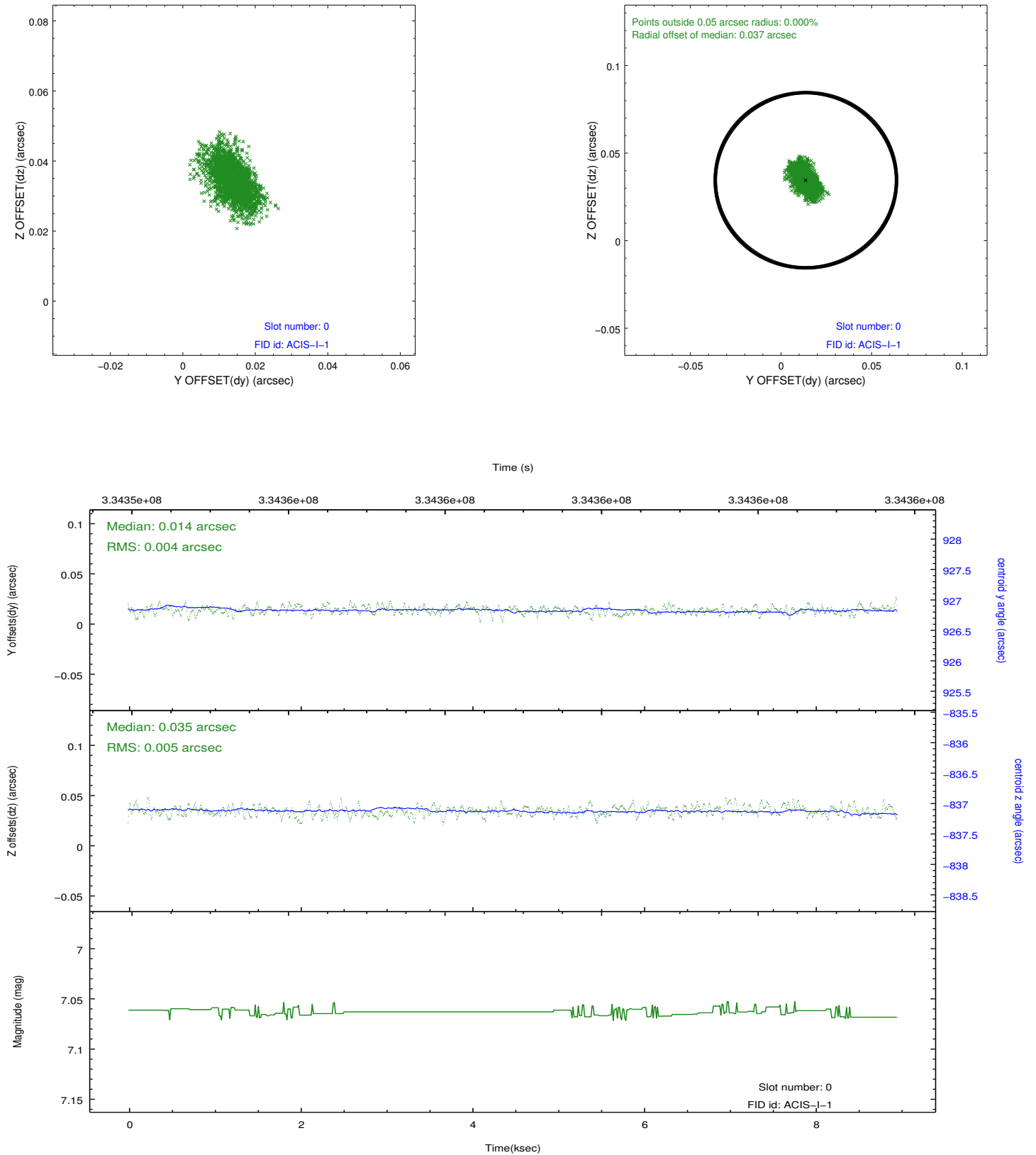


2.4.4 Slot 7

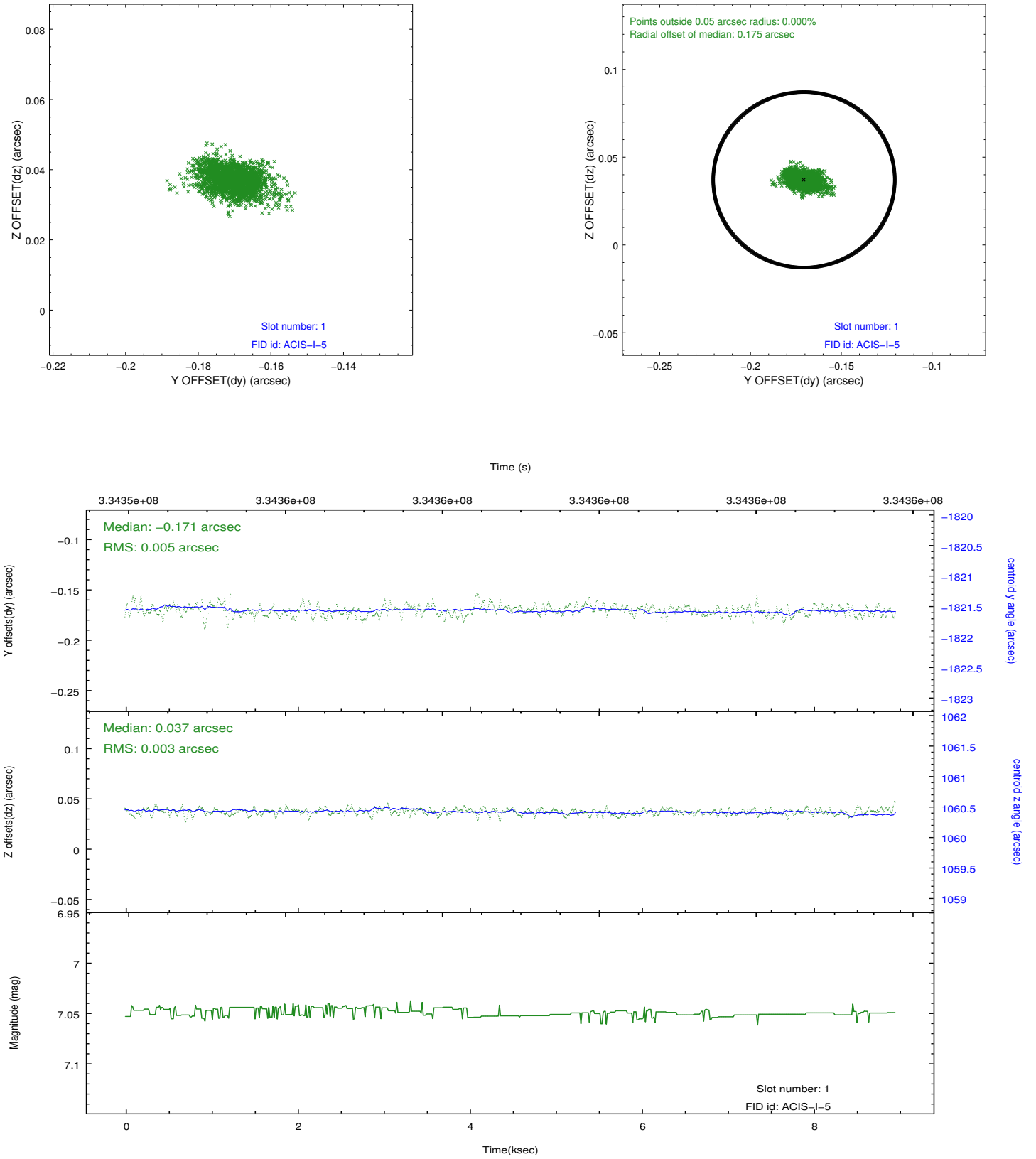


2.5 FID Slots

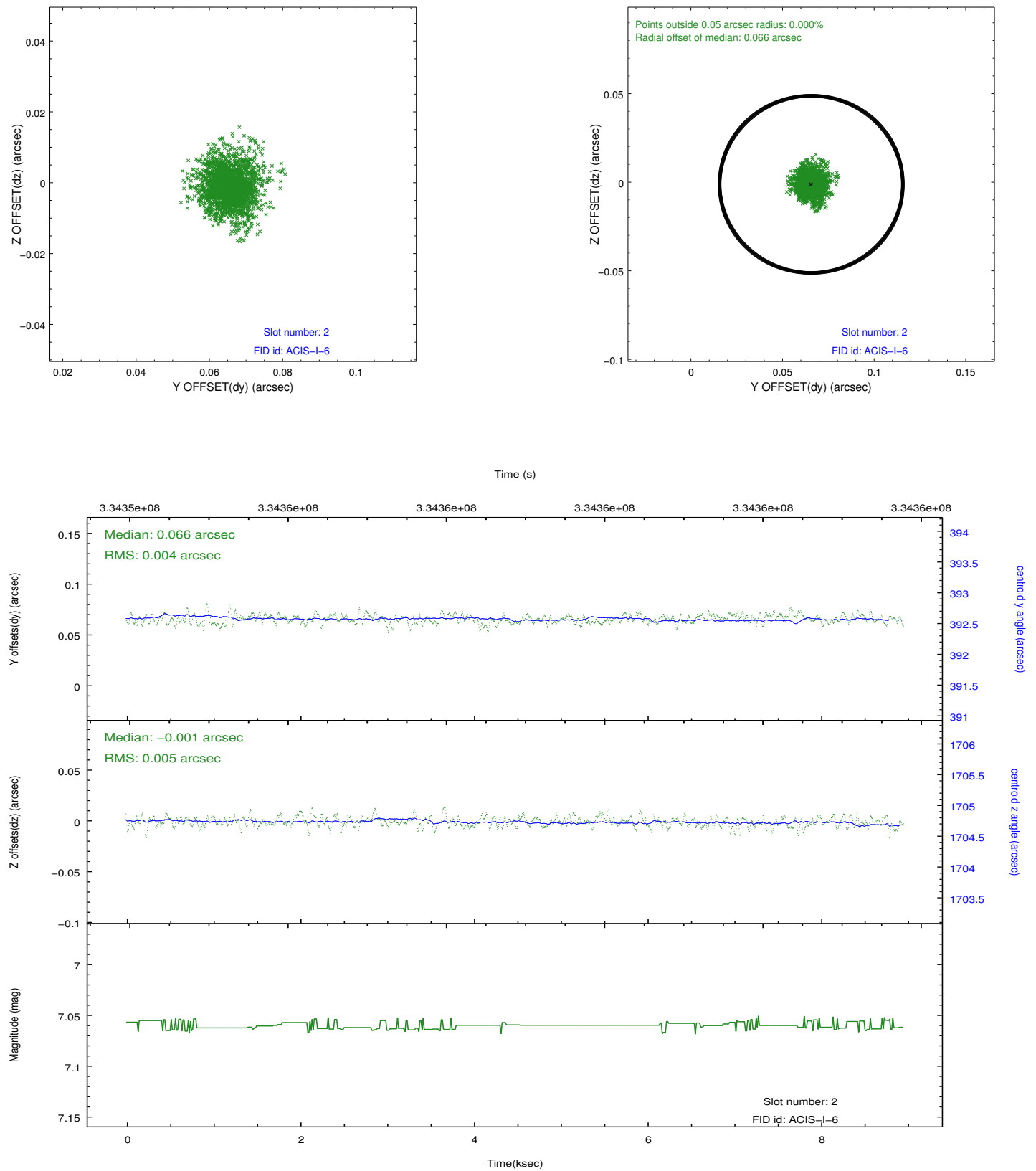
2.5.1 Slot 0



2.5.2 Slot 1



2.5.3 Slot 2



A Summary

A.1 Status

V&V Scientist	Jen Lauer
V&V Date (YYYY-MM-DD)	2012.05.29
V&V Edition	1
V&V Disposition and Status	OK
V&V Charge Time	8.94957707

A.2 Comments

The guide star in slot 4 was removed from the aspect solution due to poor data quality. The aspect solution is improved by the removal of this guide star from the solution.