

# V&V Reference Report

## L2 ASCDS Version : 8.4.5

Observation 12128 - L2 Version 2  
Chandra X-Ray Center

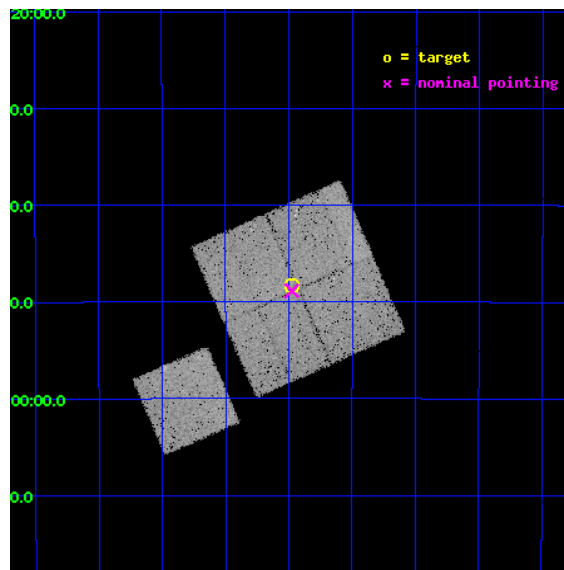
L2 Processing Date : Jun 23 2012

## Contents

<b>1</b>	<b>Front</b>	<b>2</b>
<b>2</b>	<b>OBI</b>	<b>3</b>
2.1	OBI . . . . .	3
2.1.1	Images . . . . .	3
2.1.2	Bias . . . . .	3
2.1.3	Parameters . . . . .	4
2.1.4	Events . . . . .	4
2.2	Compared Parameters . . . . .	5
2.3	Aspect . . . . .	6
2.4	Star Slots . . . . .	9
2.4.1	Slot 3 . . . . .	9
2.4.2	Slot 4 . . . . .	10
2.4.3	Slot 5 . . . . .	11
2.4.4	Slot 6 . . . . .	12
2.4.5	Slot 7 . . . . .	13
2.5	FID Slots . . . . .	14
2.5.1	Slot 0 . . . . .	14
2.5.2	Slot 1 . . . . .	15
2.5.3	Slot 2 . . . . .	16
<b>A</b>	<b>Summary</b>	<b>17</b>
A.1	Status . . . . .	17
A.2	Comments . . . . .	17

# 1 Front

seq_num	900936	Sequence number
obs_id	12128	Observation id
title	The Chandra Deep Field-South Survey: An Ultradeep Chandra Legacy	P
observer	Dr. Harvey Tananbaum	Principal investigator
object	Chandra Deep Field-South	Source name
dtcycle	0	&#160
cycle	P	events from which exps? Prim/Second/Both
ra_targ	53.12	Observer's specified target RA [deg]
dec_targ	-27.806389	Observer's specified target Dec [deg]
ra_nom	53.118951607314	Nominal RA [deg]
dec_nom	-27.814417684708	Nominal Dec [deg]
roll_nom	246.20819770696	Nominal Roll [deg]
revision	2	Processing version of data
ontime	23104.259207368	Sum of GTIs [s]
livetime	22802.385051715	Livetime [s]
ontime0	23104.259197354	Sum of GTIs [s]
ontime1	23107.400177717	Sum of GTIs [s]
ontime2	23107.400177717	Sum of GTIs [s]
ontime3	23104.259207368	Sum of GTIs [s]
ontime6	23107.400177717	Sum of GTIs [s]
l2events	82635	Number of level 2 events

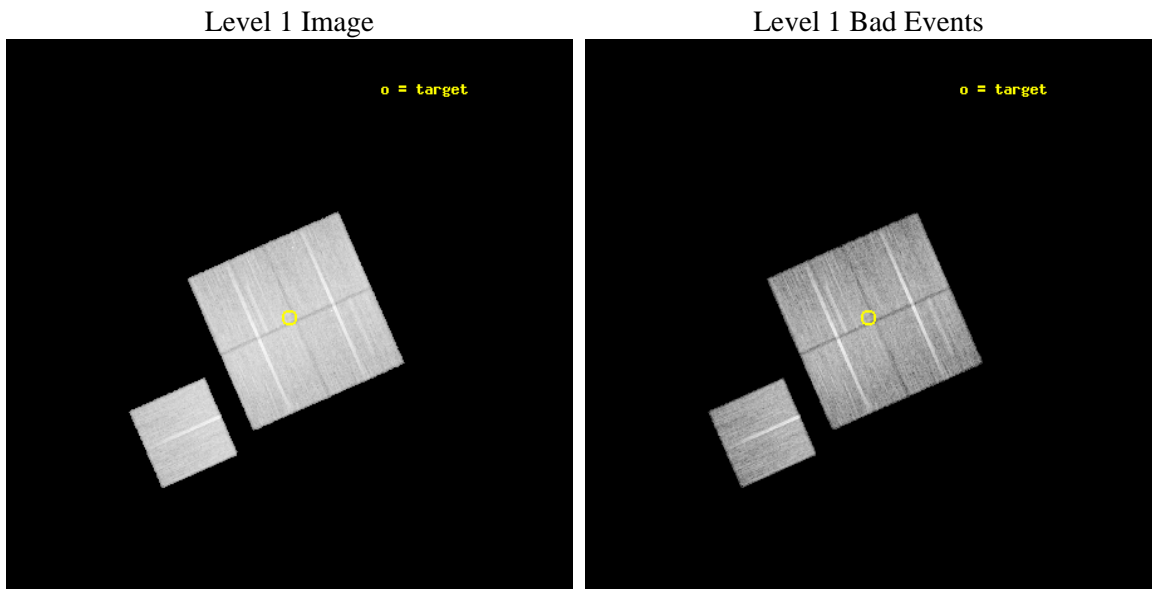




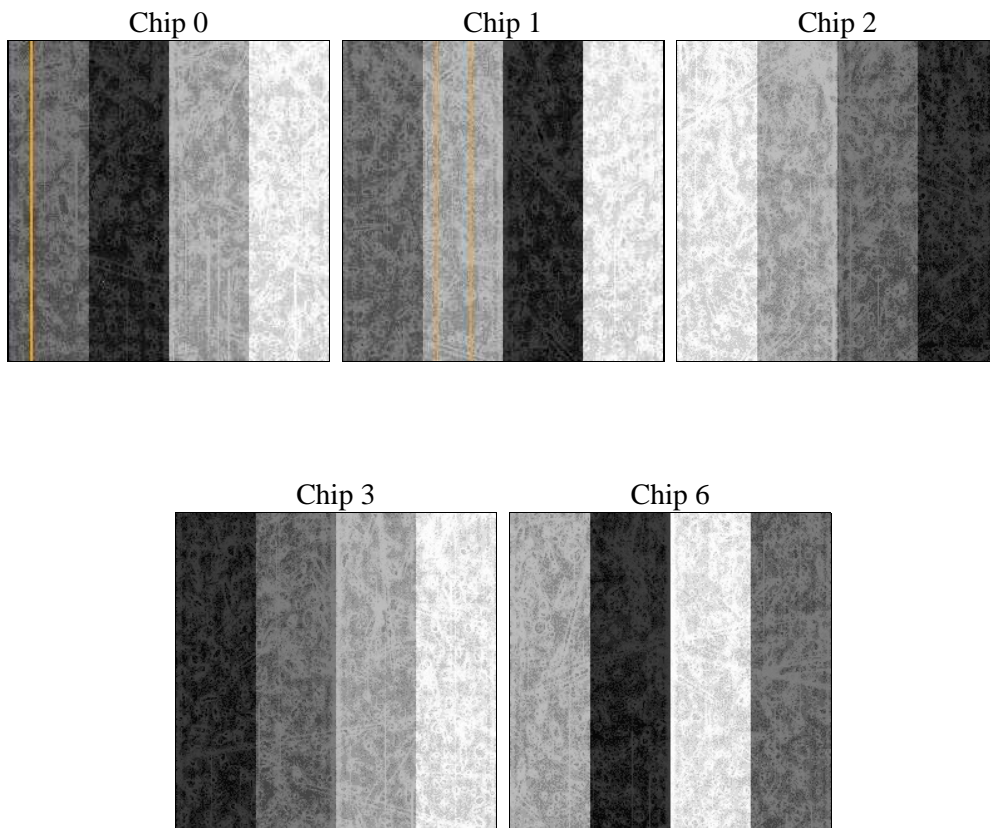
## 2 OBI

### 2.1 OBI

#### 2.1.1 Images



#### 2.1.2 Bias



### 2.1.3 Parameters

obi_num	1	Obi number	sched_exp_time	22936.193000	[s] Scheduled observation exposure time
ascdsver	8.4.5	Processing system revision	ontime	23104.259207368	Sum of GTIs [s]
caldsver	4.4.10	&#160	ontime0	23104.259197354	Sum of GTIs [s]
date	2012-06-23T06:48:10	Date and time of file creation	ontime1	23107.400177717	Sum of GTIs [s]
revision	2	Processing version of data	ontime2	23107.400177717	Sum of GTIs [s]
			ontime3	23104.259207368	Sum of GTIs [s]
			ontime6	23107.400177717	Sum of GTIs [s]
			l1events	914805	Number of level 1 events

### 2.1.4 Events

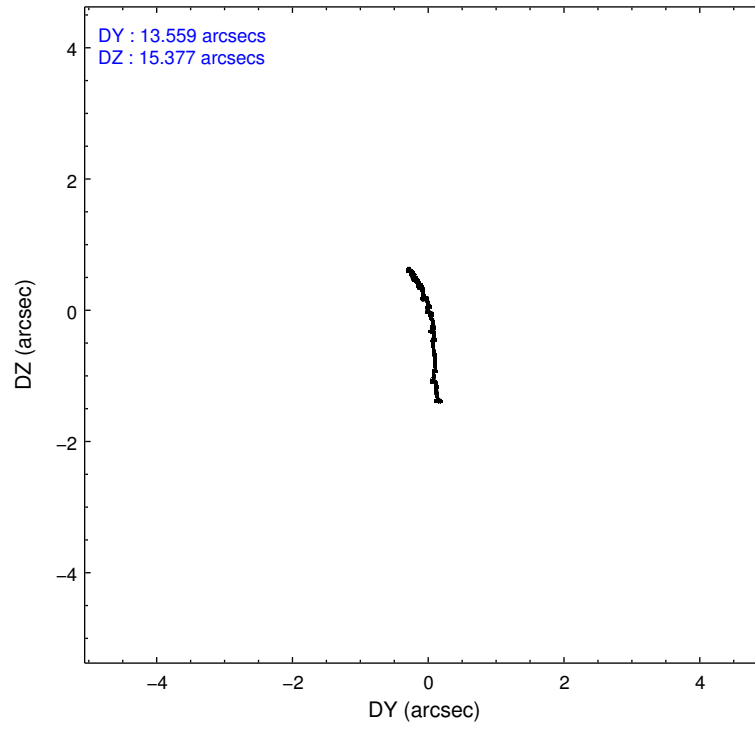
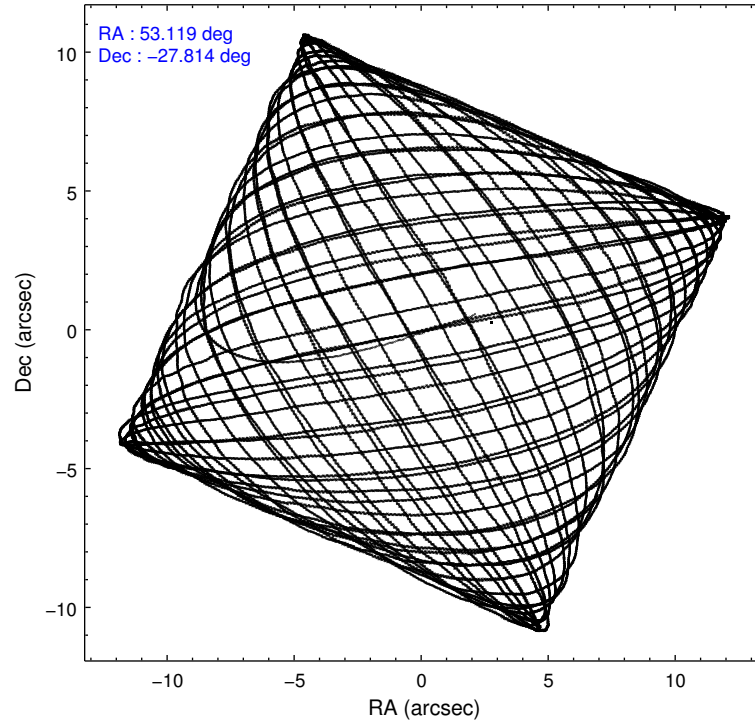
	ccd 0	ccd 1	ccd 2	ccd 3	ccd 6
level 1 events	169071	174981	191127	187541	192085
rejected events	149708	152915	172186	169189	172150
rejected %	88%	87%	90%	90%	89%

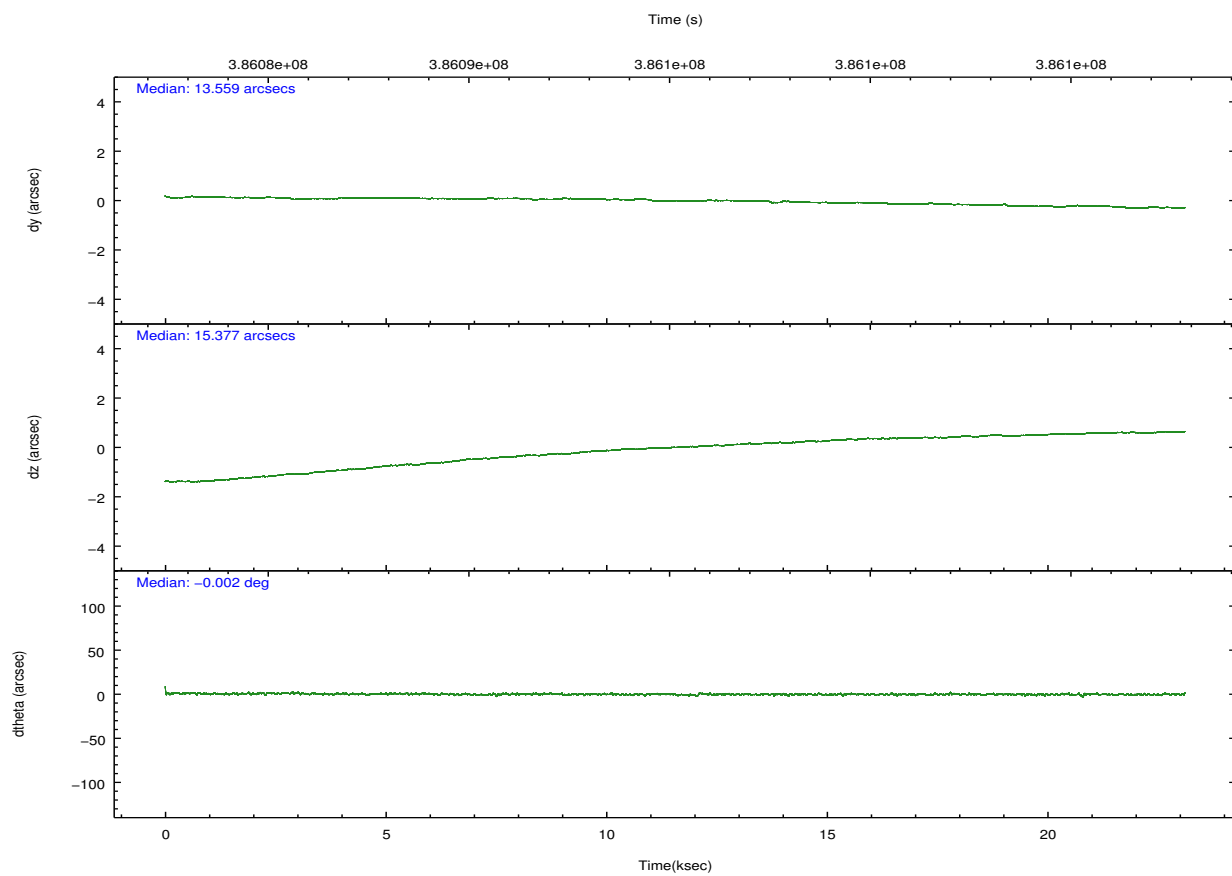
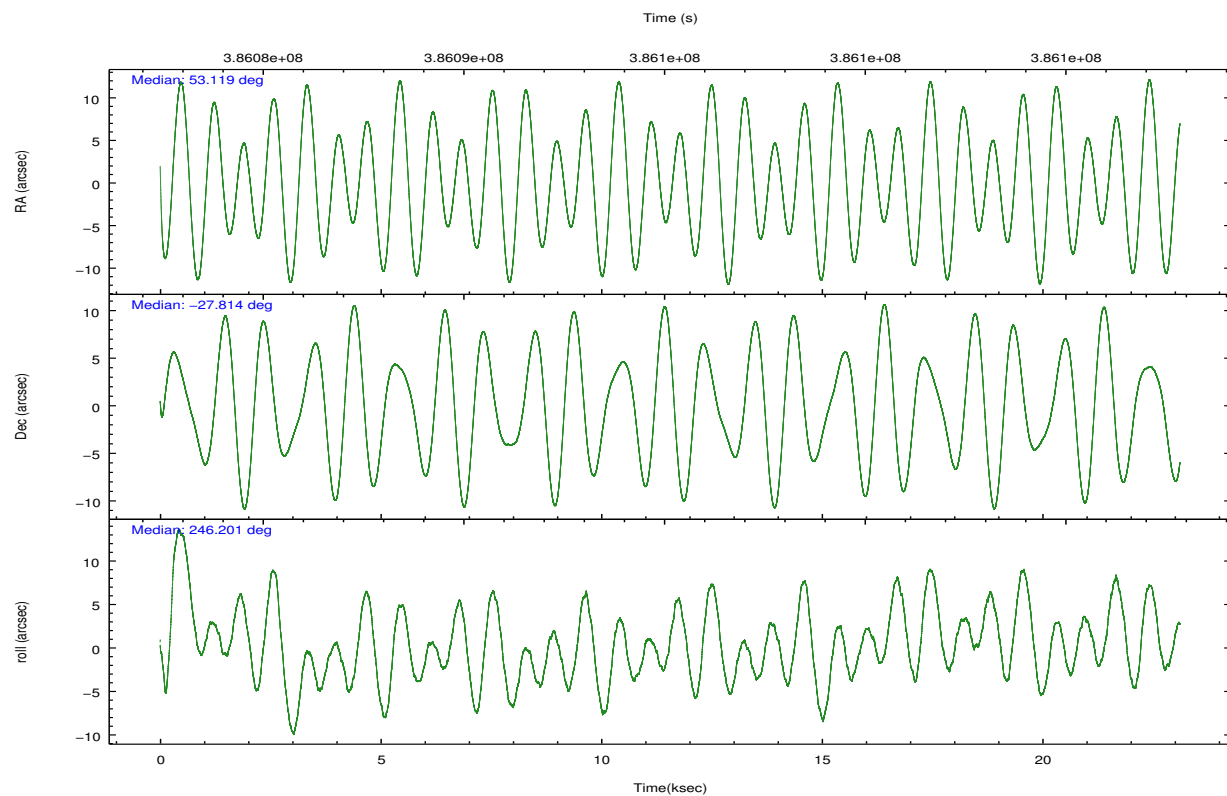
	ccd 0	ccd 1	ccd 2	ccd 3	ccd 6
grade 0 events	6989	8240	6851	6523	6987
	4%	4%	3%	3%	3%
grade 1 events	118	93	94	106	90
	0%	0%	0%	0%	0%
grade 2 events	4822	5281	4794	4282	4570
	2%	3%	2%	2%	2%
grade 3 events	2138	2200	2004	2162	2254
	1%	1%	1%	1%	1%
grade 4 events	2058	2268	2040	2069	2112
	1%	1%	1%	1%	1%
grade 5 events	7232	7846	7040	8383	8086
	4%	4%	3%	4%	4%
grade 6 events	3888	4644	3718	3794	4477
	2%	2%	1%	2%	2%
grade 7 events	141826	144409	164586	160222	163509
	83%	82%	86%	85%	85%

## 2.2 Compared Parameters

Parameter	Planned	Actual	Parameter	Planned	Actual
Instrument	ACIS	ACIS	Obspar format version number	7	7
Detector	ACIS-01236	ACIS-01236	Obspar file type	PREDICTED	ACTUAL
Grating	NONE	NONE	Obspar update status	NONE	UPDATED
Data mode	VFAINT	VFAINT	CCD I0 on	Y	Y
Observation mode	POINTING	POINTING	CCD I1 on	Y	Y
[deg] Pointing RA	53.115484	53.11895160731434	CCD I2 on	Y	Y
[deg] Pointing Dec	-27.787093	-27.81441768470801	CCD I3 on	Y	Y
[deg] Pointing Roll	245.997897	246.2081977069578	CCD S0 on	N	N
[mm] SIM focus pos	-0.782348	-0.7809083437167272	CCD S1 on	N	N
[mm] SIM defocus	0	0.001439871863259334	CCD S2 on	O1	Y
[mm] SIM translation stage pos	-233.592463	-233.5874344608287	CCD S3 on	N	N
[mm] SIM translation stage offset	0	-0.005018542100998502	CCD S4 on	N	N
[s] Observation start time (MET)	386083752.184000	386082482.77376	CCD S5 on	N	N
Observation start date	2010-03-27T13:28:06	2010-03-27T13:08:02	Number of optional ACIS chips dropped	0	0
[s] Observation end time (MET)	386106688.184000	386106930.05	On-chip summing requested	N	N
Observation end date	2010-03-27T19:50:22	2010-03-27T19:55:30	Subarray requested	NONE	NONE
Read mode	TIMED	TIMED	Alternating exposures requested	N	N
			[s] Primary exposure time	0.000000	3.1

## 2.3 Aspect



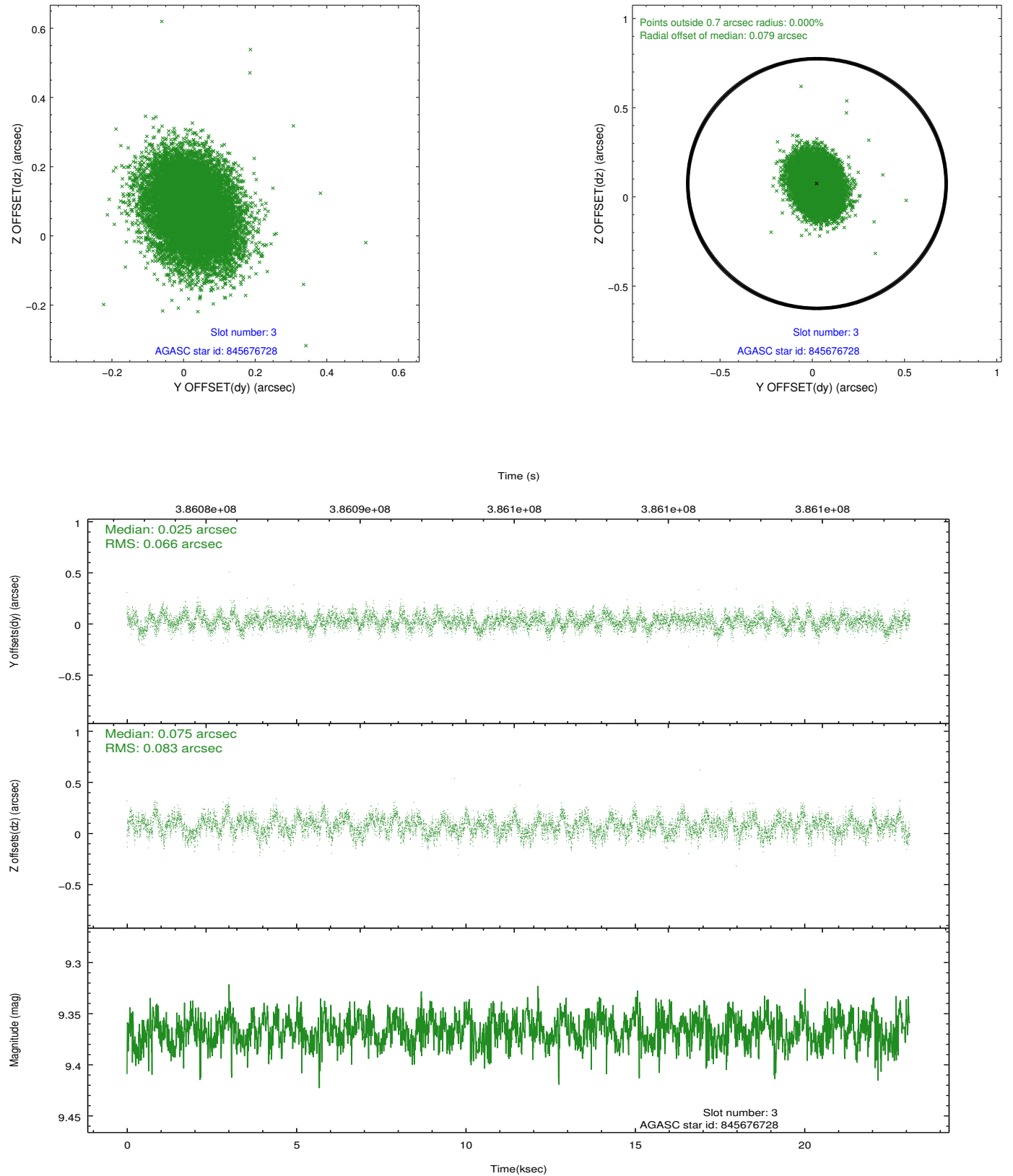


### Slot Statistics

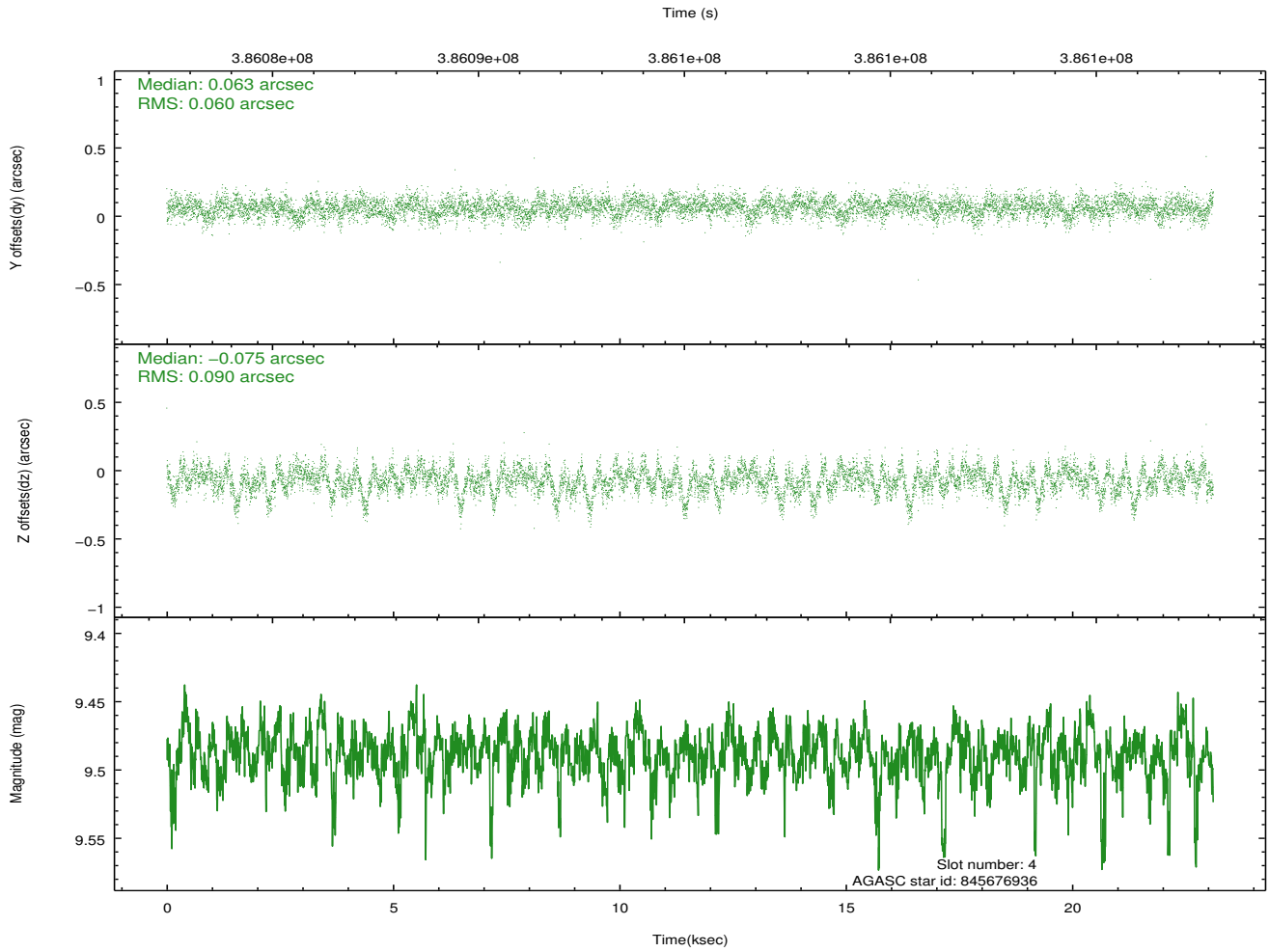
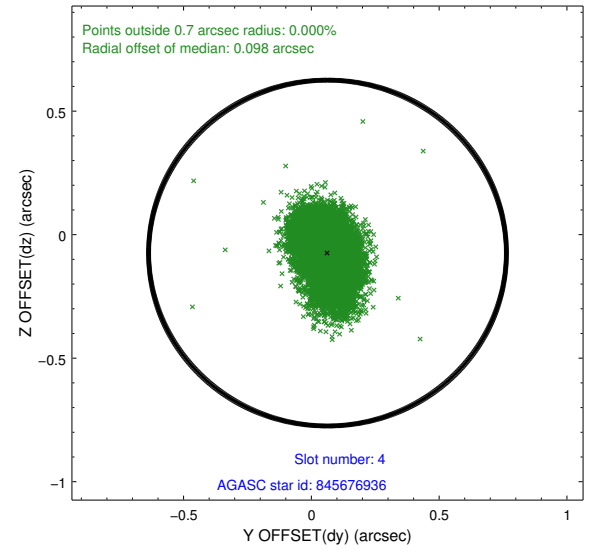
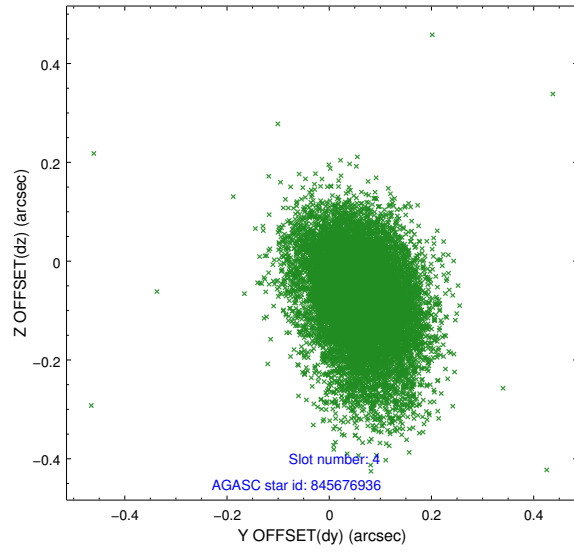
slot	status	id	mag	n_pts	med_dy	med_dz	dr1	dr2	ra	dec	mean_y	mean_z
0	FID	ACIS-I-2	7.01	5637	-0.097	-0.090	0.021	0.037	0.000000	0.000000	-768.29	-845.28
1	FID	ACIS-I-4	7.01	5636	0.217	0.082	0.010	0.016	0.000000	0.000000	2146.00	1061.00
2	FID	ACIS-I-5	7.09	5638	-0.221	0.076	0.017	0.027	0.000000	0.000000	-1822.07	1058.98
3	GUIDE	845676728	9.37	11264	0.025	0.075	0.113	0.180	52.877179	-27.664318	-93.53	-873.15
4	GUIDE	845676936	9.49	11258	0.063	-0.075	0.112	0.194	52.843773	-27.880153	658.86	-652.56
5	GUIDE	845807880	8.79	11270	-0.125	-0.045	0.091	0.144	53.382027	-27.886093	-18.39	920.45
6	GUIDE	845808496	10.17	11259	-0.028	0.093	0.160	0.259	53.777917	-27.725281	-1056.68	1840.68
7	GUIDE	845808968	9.94	11255	0.067	-0.052	0.172	0.276	54.016598	-27.589085	-1811.12	2341.19

## 2.4 Star Slots

### 2.4.1 Slot 3

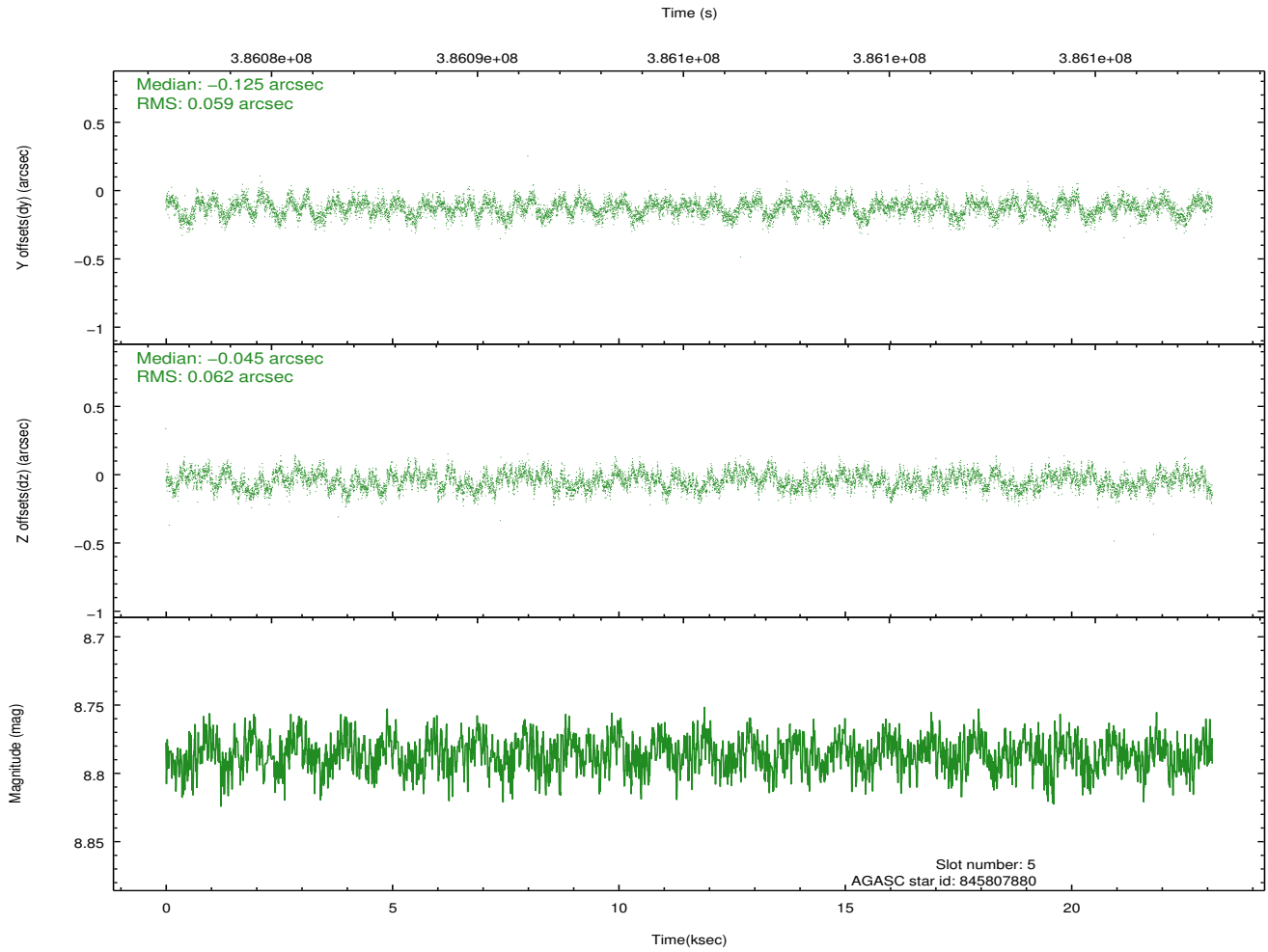
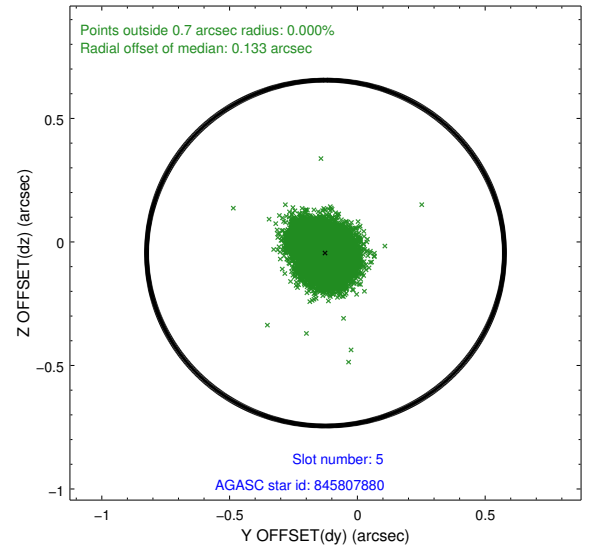
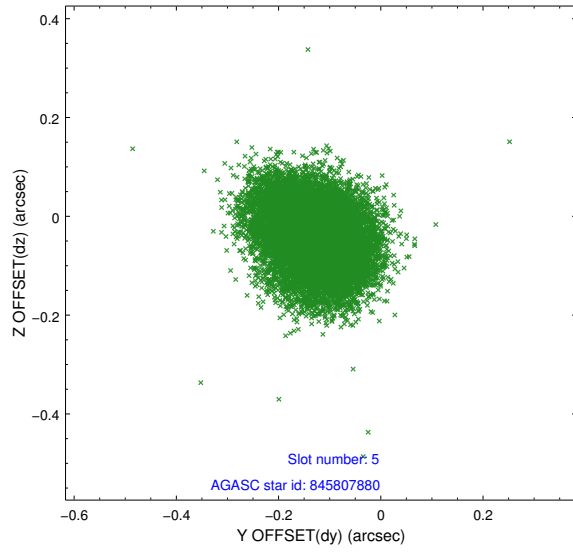


## 2.4.2 Slot 4

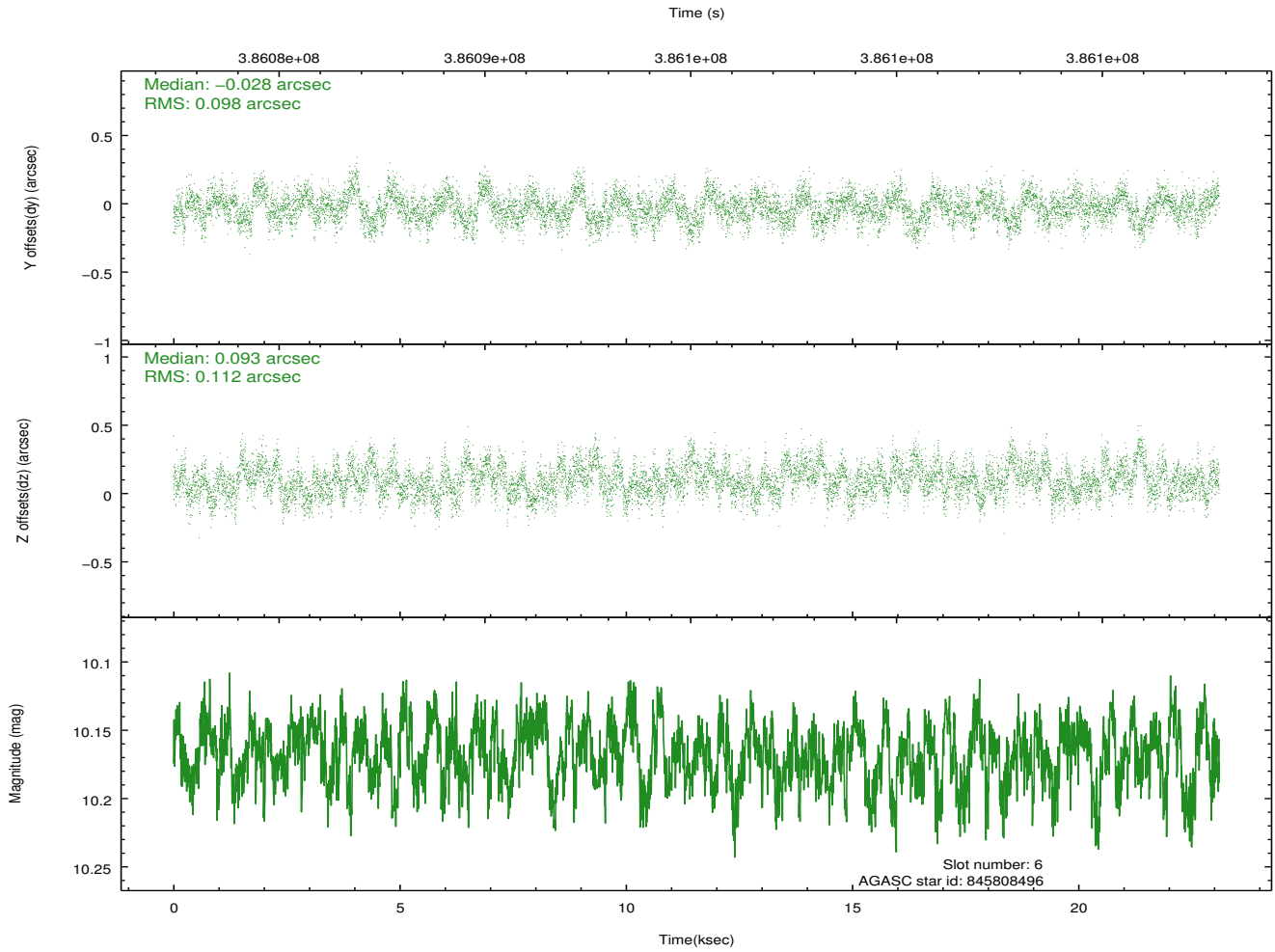
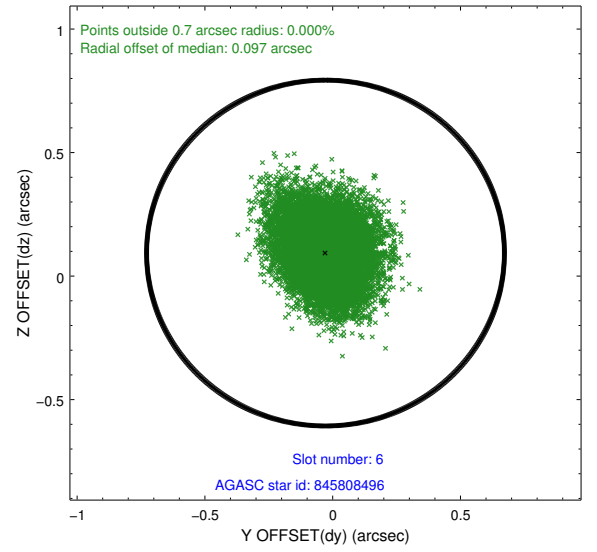
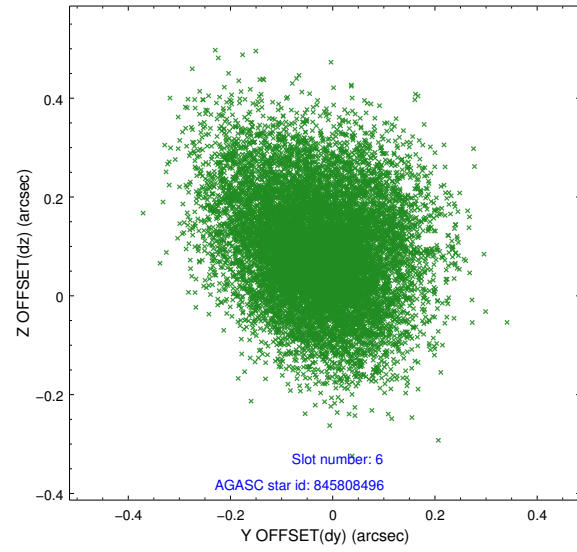




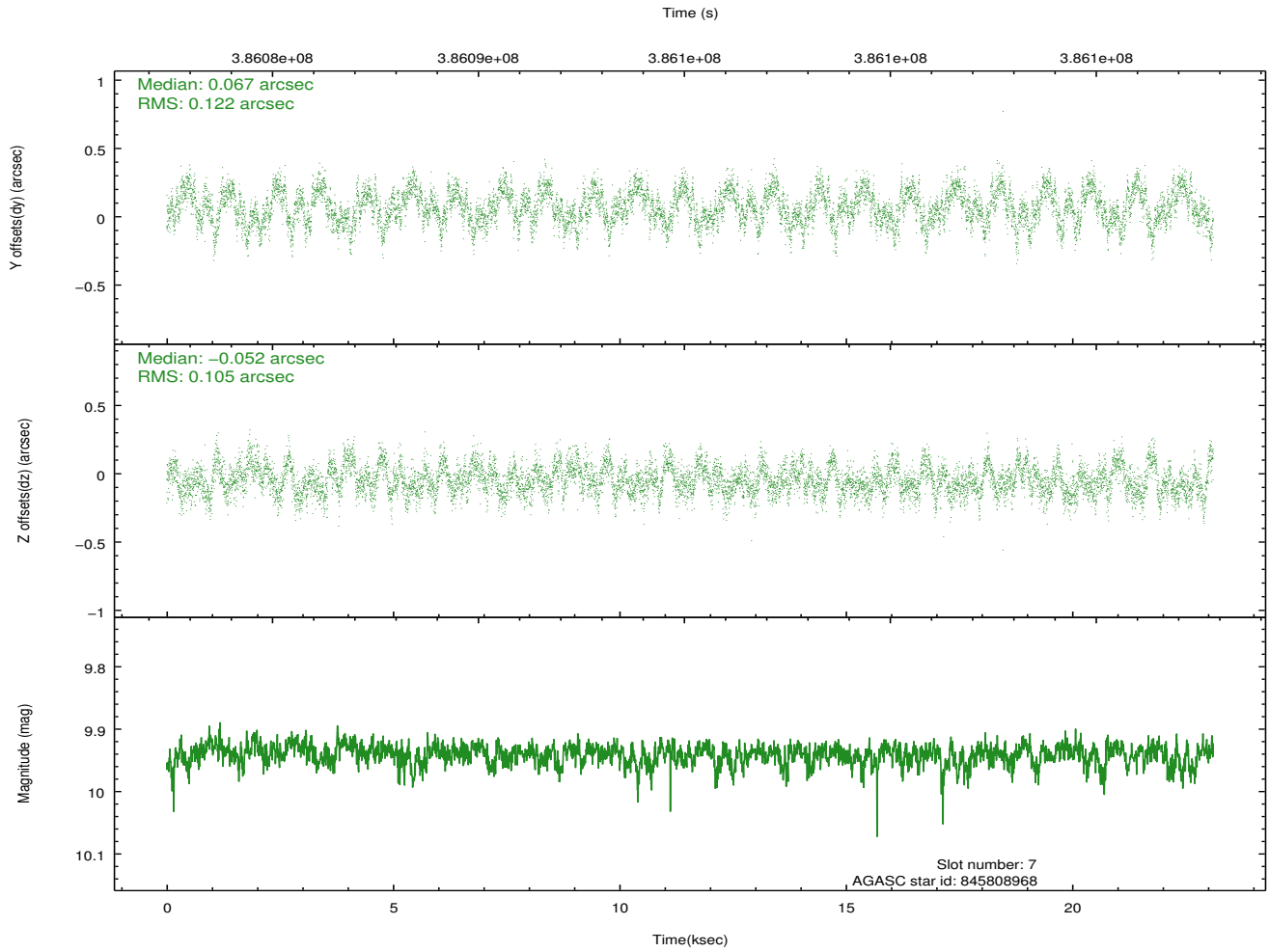
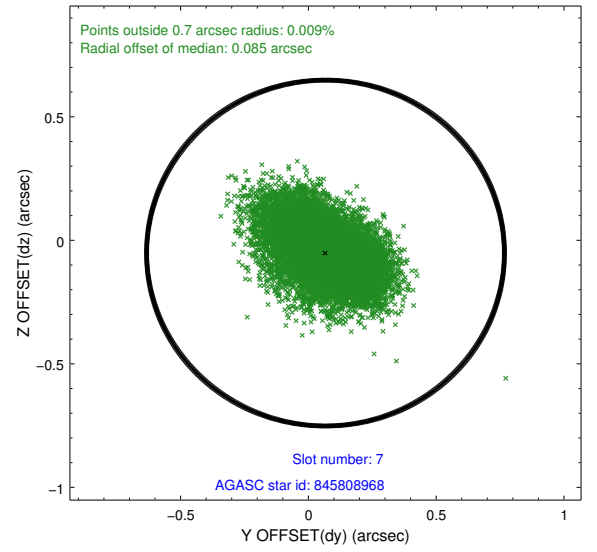
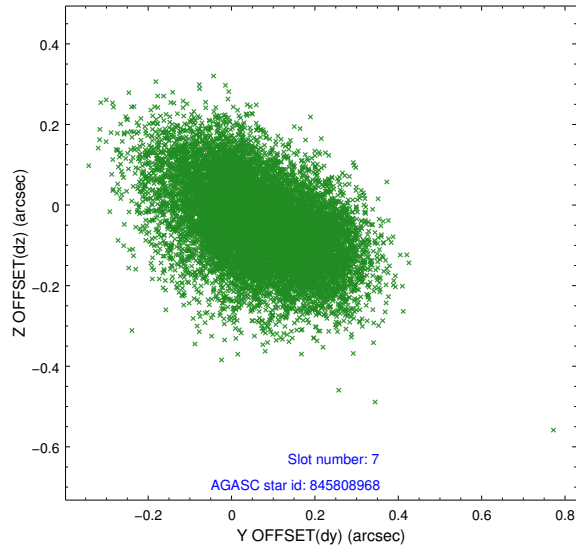
### 2.4.3 Slot 5



## 2.4.4 Slot 6

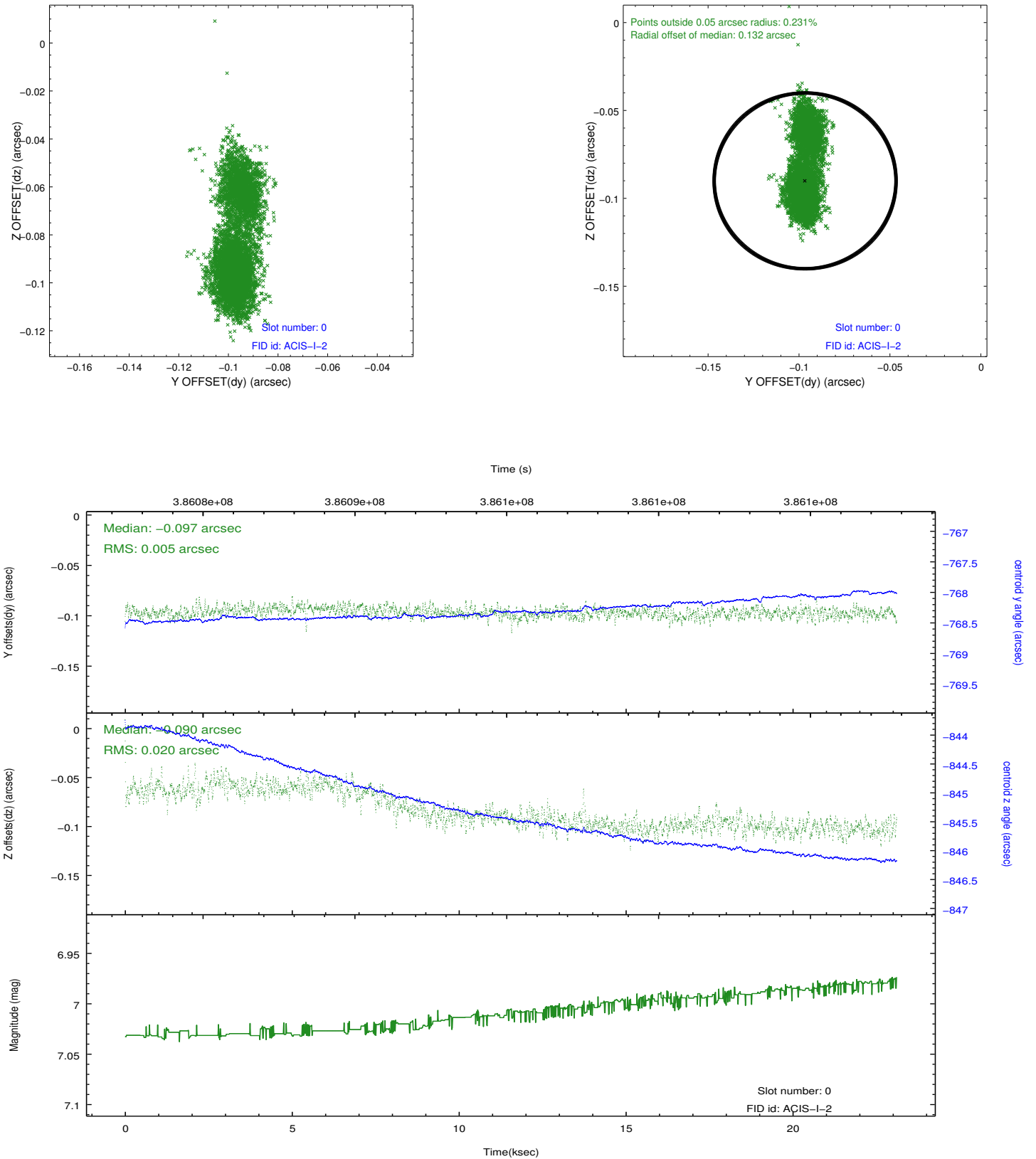


## 2.4.5 Slot 7

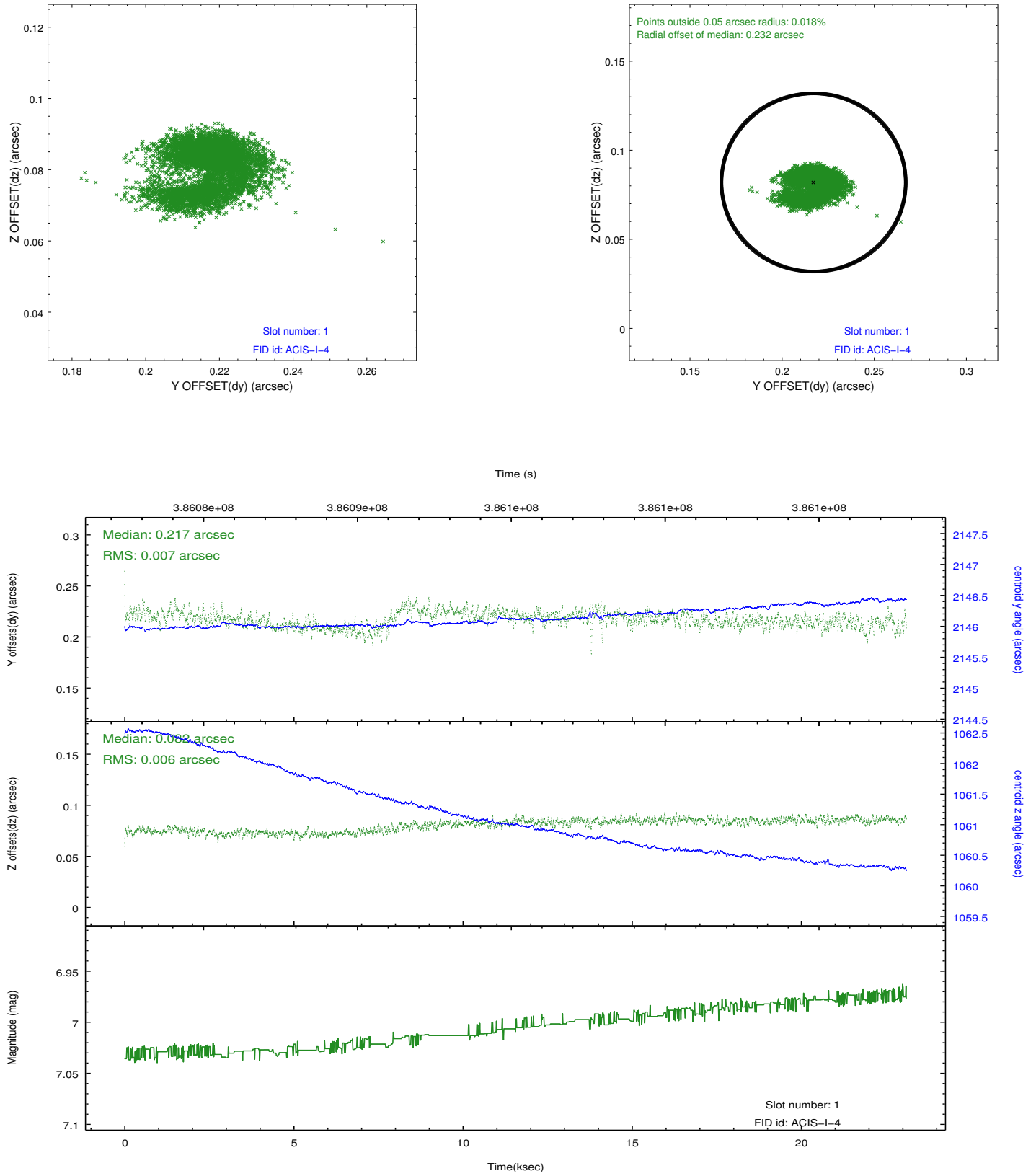


## 2.5 FID Slots

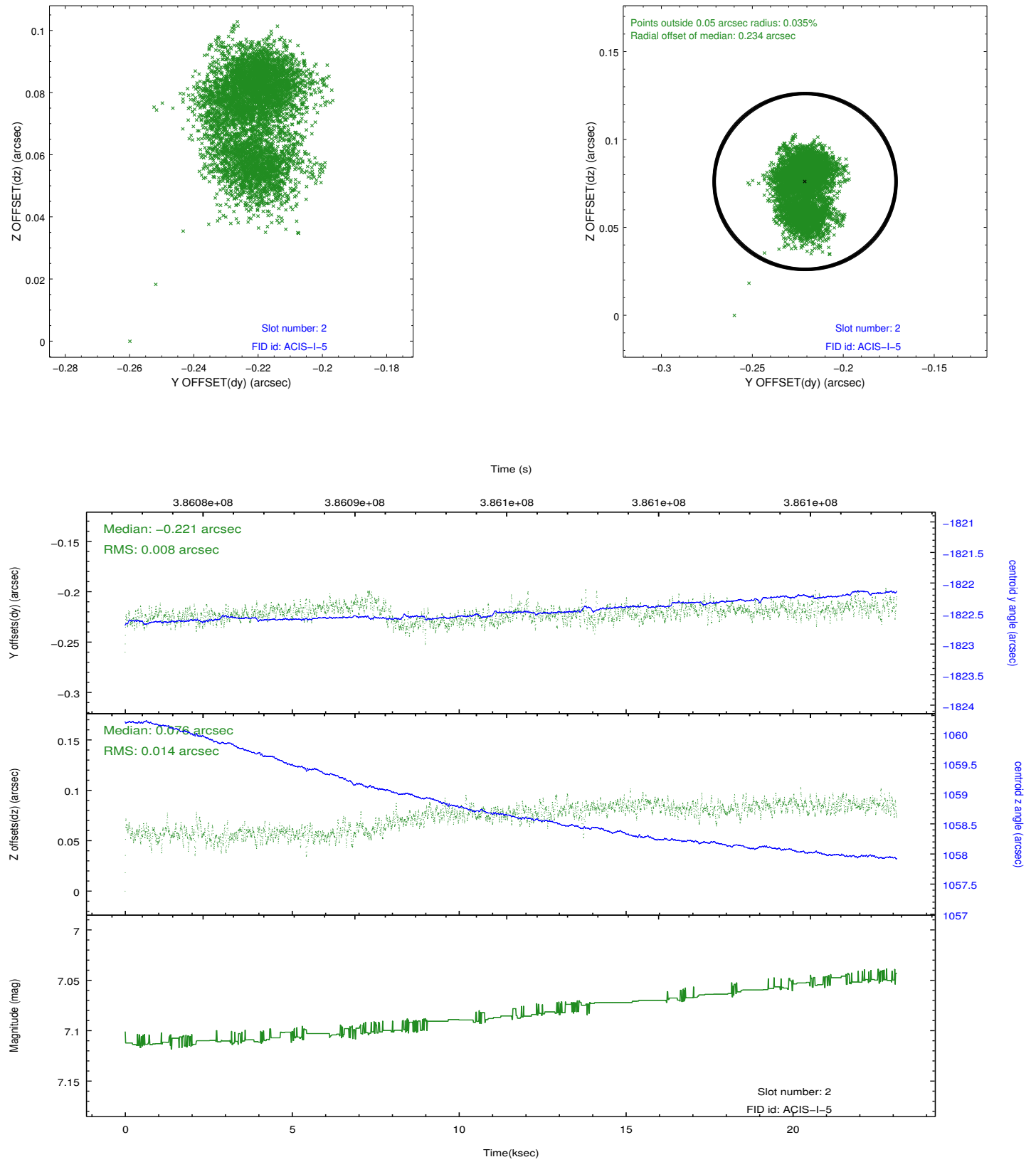
### 2.5.1 Slot 0



## 2.5.2 Slot 1



### 2.5.3 Slot 2



## **A Summary**

### **A.1 Status**

V&V Scientist	Jen Lauer
V&V Date (YYYY-MM-DD)	2012.06.29
V&V Edition	1
V&V Disposition and Status	OK
V&V Charge Time	23.104259207368

### **A.2 Comments**