

# V&V Reference Report

## L2 ASCDS Version : 8.4.4

Observation 9429 - L2 Version 2  
Chandra X-Ray Center

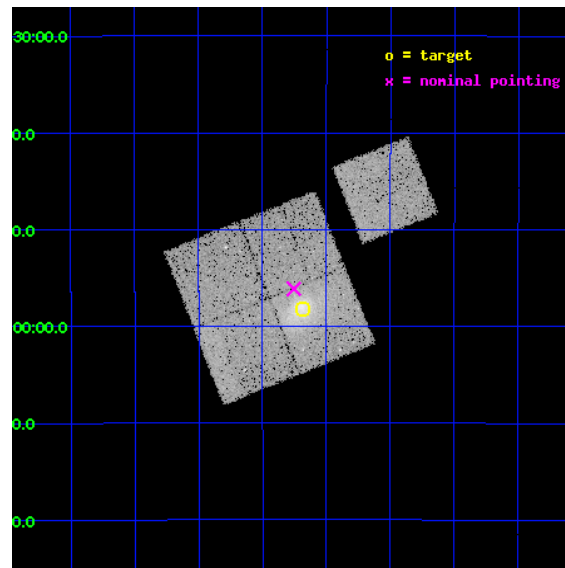
L2 Processing Date : May 19 2012

## Contents

<b>1</b>	<b>Front</b>	<b>2</b>
<b>2</b>	<b>OBI</b>	<b>3</b>
2.1	OBI . . . . .	3
2.1.1	Images . . . . .	3
2.1.2	Bias . . . . .	3
2.1.3	Parameters . . . . .	4
2.1.4	Events . . . . .	4
2.2	Compared Parameters . . . . .	5
2.3	Aspect . . . . .	6
2.4	Star Slots . . . . .	9
2.4.1	Slot 3 . . . . .	9
2.4.2	Slot 4 . . . . .	10
2.4.3	Slot 5 . . . . .	11
2.4.4	Slot 6 . . . . .	12
2.4.5	Slot 7 . . . . .	13
2.5	FID Slots . . . . .	14
2.5.1	Slot 0 . . . . .	14
2.5.2	Slot 1 . . . . .	15
2.5.3	Slot 2 . . . . .	16
<b>A</b>	<b>Summary</b>	<b>17</b>
A.1	Status . . . . .	17
A.2	Comments . . . . .	17

# 1 Front

seq_num	800765	Sequence number
obs_id	9429	Observation id
title	LoCuSS: Cluster Mass Comparison with Chandra and HST -- Observational Discrepancy or Agreement in the New Millennium?	Proposal title
observer	Dr Graham Smith	Principal investigator
object	RXCJ0118.1-2658	Source name
dtcycle	0	&#160
cycle	P	events from which exps? Prim/Second/Both
ra_targ	19.546	Observer's specified target RA [deg]
dec_targ	-26.969917	Observer's specified target Dec [deg]
ra_nom	19.563637681158	Nominal RA [deg]
dec_nom	-26.93560155511	Nominal Dec [deg]
roll_nom	68.216693441598	Nominal Roll [deg]
revision	2	Processing version of data
ontime	19942.300153375	Sum of GTIs [s]
livetime	19681.739320563	Livetime [s]
ontime0	19939.159153104	Sum of GTIs [s]
ontime1	19939.159173012	Sum of GTIs [s]
ontime2	19936.018162787	Sum of GTIs [s]
ontime3	19942.300153375	Sum of GTIs [s]
ontime6	19939.159153163	Sum of GTIs [s]
l2events	81253	Number of level 2 events

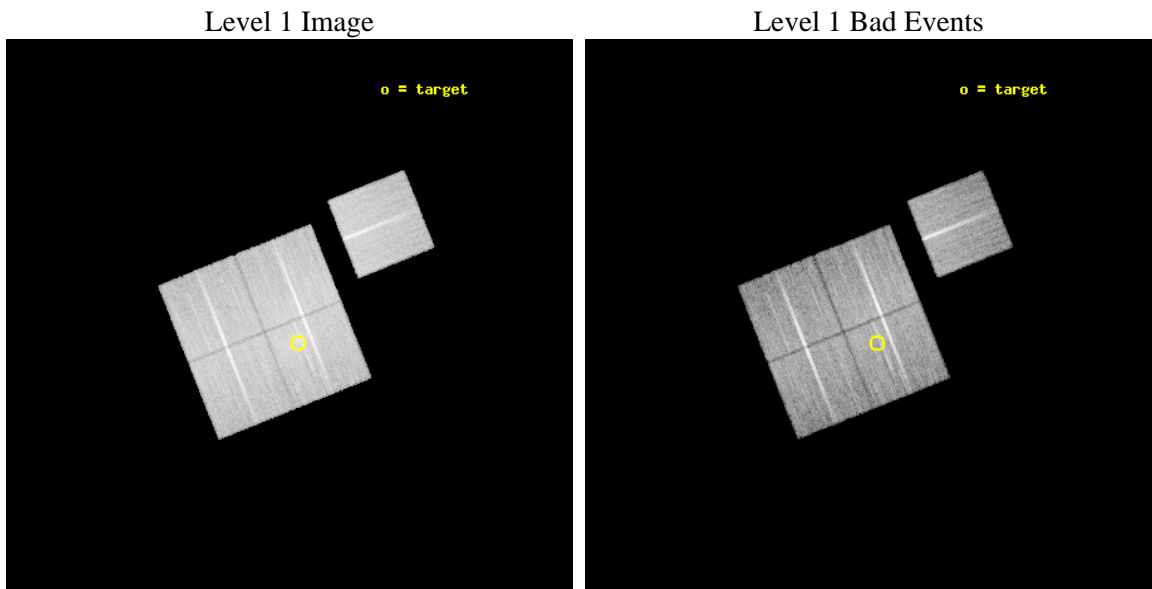




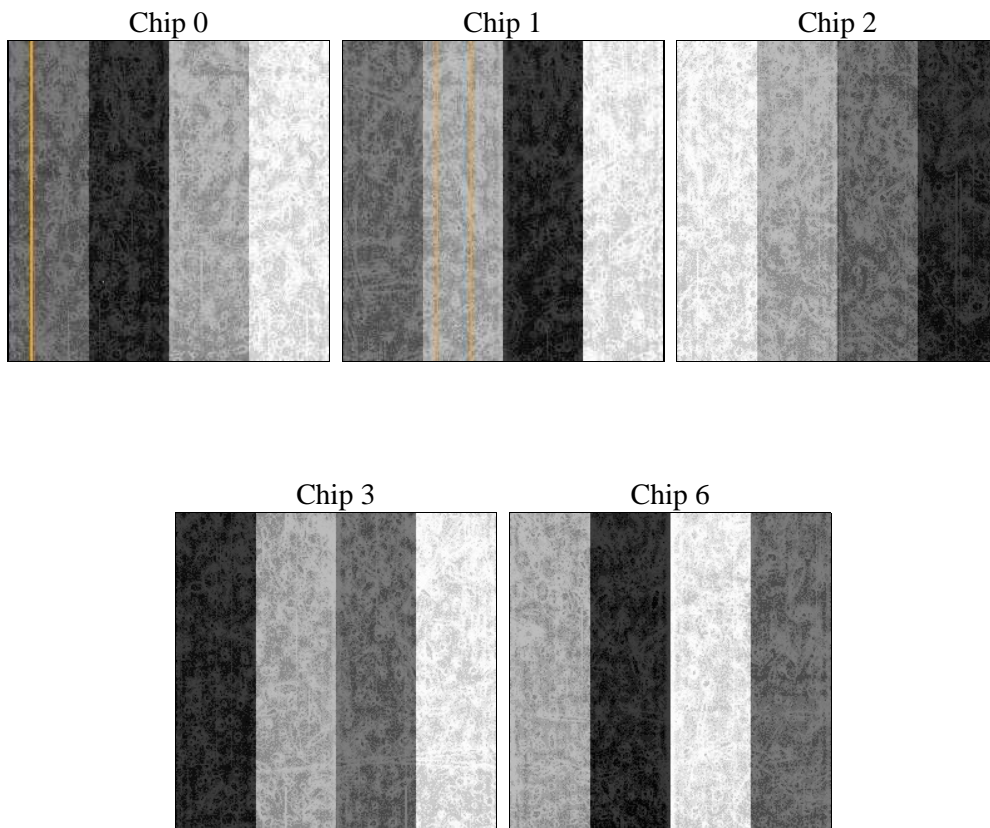
## 2 OBI

### 2.1 OBI

#### 2.1.1 Images



#### 2.1.2 Bias



### 2.1.3 Parameters

obi_num	1	Obi number	sched_exp_time	20166.999000	[s] Scheduled observation exposure time
ascdsver	8.4.4	Processing system revision	ontime	19942.300153375	Sum of GTIs [s]
caldsver	4.4.9	&#160	ontime0	19939.159153104	Sum of GTIs [s]
date	2012-05-19T22:56:14	Date and time of file creation	ontime1	19939.159173012	Sum of GTIs [s]
revision	2	Processing version of data	ontime2	19936.018162787	Sum of GTIs [s]
			ontime3	19942.300153375	Sum of GTIs [s]
			ontime6	19939.159153163	Sum of GTIs [s]
			l1events	823987	Number of level 1 events

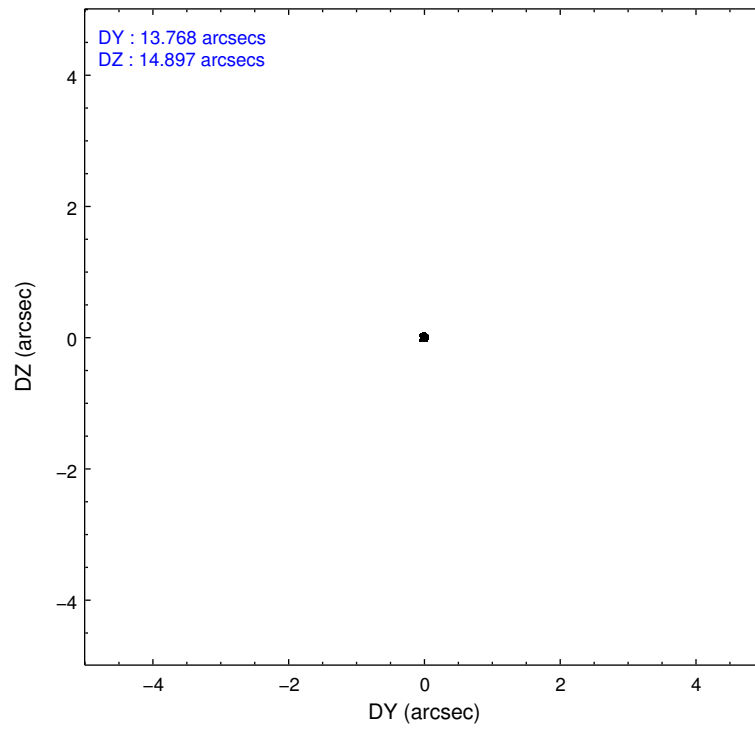
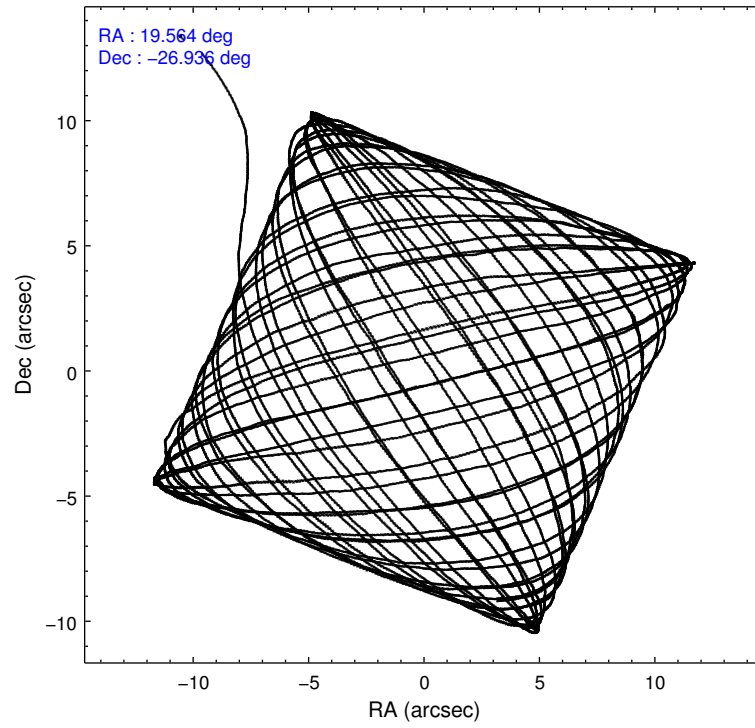
### 2.1.4 Events

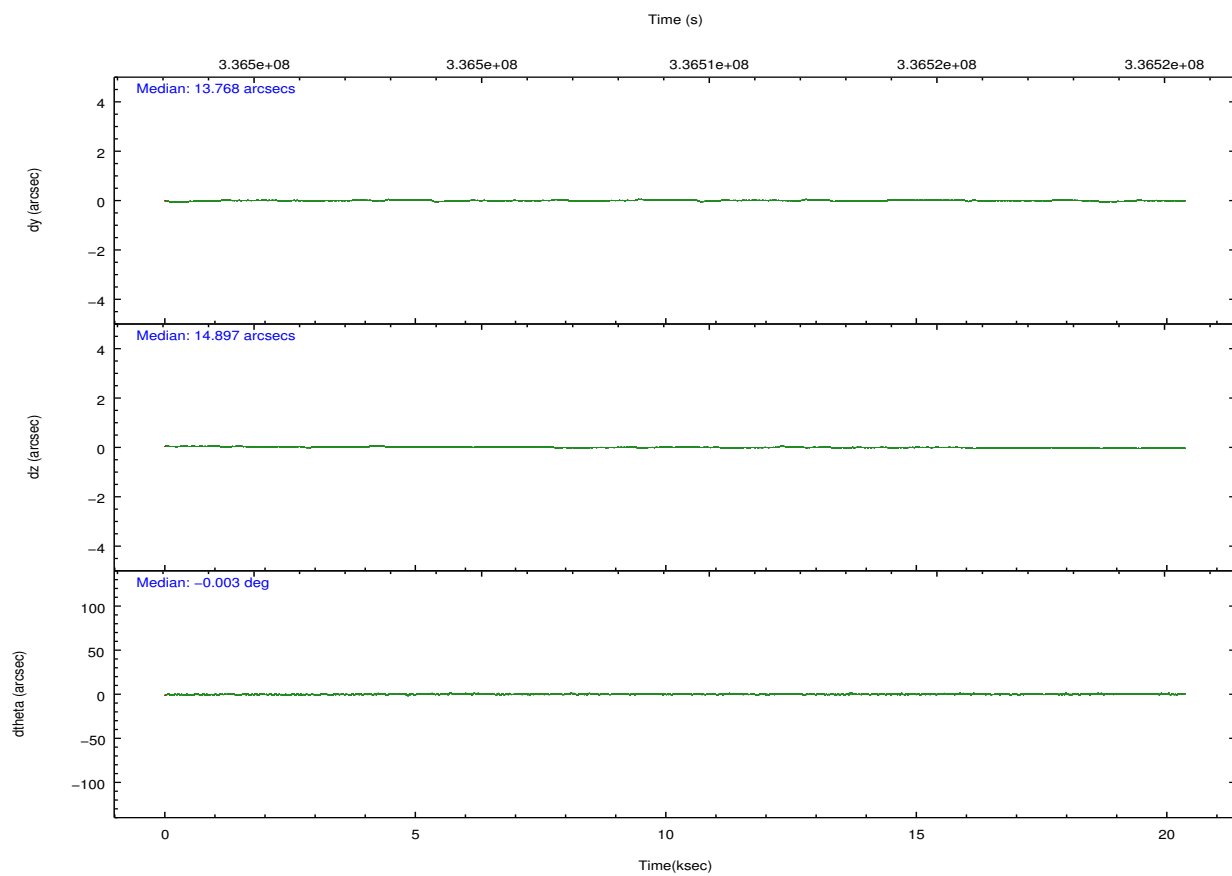
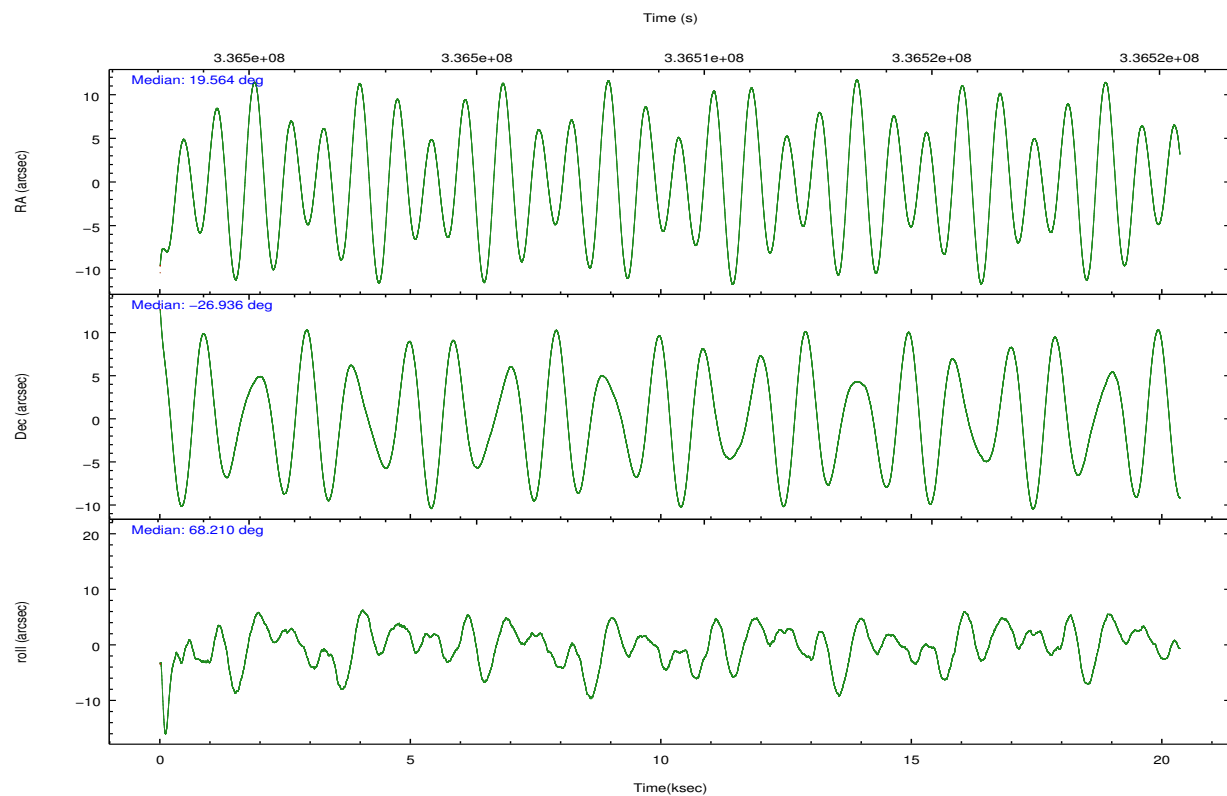
	ccd 0	ccd 1	ccd 2	ccd 3	ccd 6		ccd 0	ccd 1	ccd 2	ccd 3	ccd 6
level 1 events	154009	152954	176483	176463	164078	grade 0 events	5590	6997	6301	14526	5875
rejected events	137396	134022	159768	149721	147165		3%	4%	3%	8%	3%
rejected %	89%	87%	90%	84%	89%	grade 1 events	99	90	95	152	81
							0%	0%	0%	0%	0%
						grade 2 events	4106	4230	3941	4521	3711
							2%	2%	2%	2%	2%
						grade 3 events	1881	1954	1766	2054	1848
							1%	1%	1%	1%	1%
						grade 4 events	1760	1958	1749	2181	1829
							1%	1%	0%	1%	1%
						grade 5 events	5856	6483	5458	6948	6712
							3%	4%	3%	3%	4%
						grade 6 events	3283	3801	2964	3469	3656
							2%	2%	1%	1%	2%
						grade 7 events	131434	127441	154209	142612	140366
							85%	83%	87%	80%	85%

## 2.2 Compared Parameters

Parameter	Planned	Actual	Parameter	Planned	Actual
Instrument	ACIS	ACIS	Obspar format version number	7	7
Detector	ACIS-01236	ACIS-01236	Obspar file type	PREDICTED	ACTUAL
Grating	NONE	NONE	Obspar update status	NONE	UPDATED
Data mode	VFAINT	VFAINT	Number of optional ACIS chips dropped	0	0
Observation mode	POINTING	POINTING	On-chip summing requested	N	N
[deg] Pointing RA	19.568179	19.56363768115821	Subarray requested	NONE	NONE
[deg] Pointing Dec	-26.962798	-26.93560155510956	Alternating exposures requested	N	N
[deg] Pointing Roll	68.010056	68.21669344159751	[s] Primary exposure time	0.000000	3.1
[mm] SIM focus pos	-0.782348	-0.7809083437167272			
[mm] SIM defocus	0	0.001439871863259334			
[mm] SIM translation stage pos	-227.592463	-227.5983354125128			
[mm] SIM translation stage offset	-6	-5.99411759041692			
[s] Observation start time (MET)	336499267.184000	336498479.42223			
Observation start date	2008-08-30T16:00:02	2008-08-30T15:47:59			
[s] Observation end time (MET)	336519434.184000	336519660.53577			
Observation end date	2008-08-30T21:36:09	2008-08-30T21:41:00			
Read mode	TIMED	TIMED			

## 2.3 Aspect



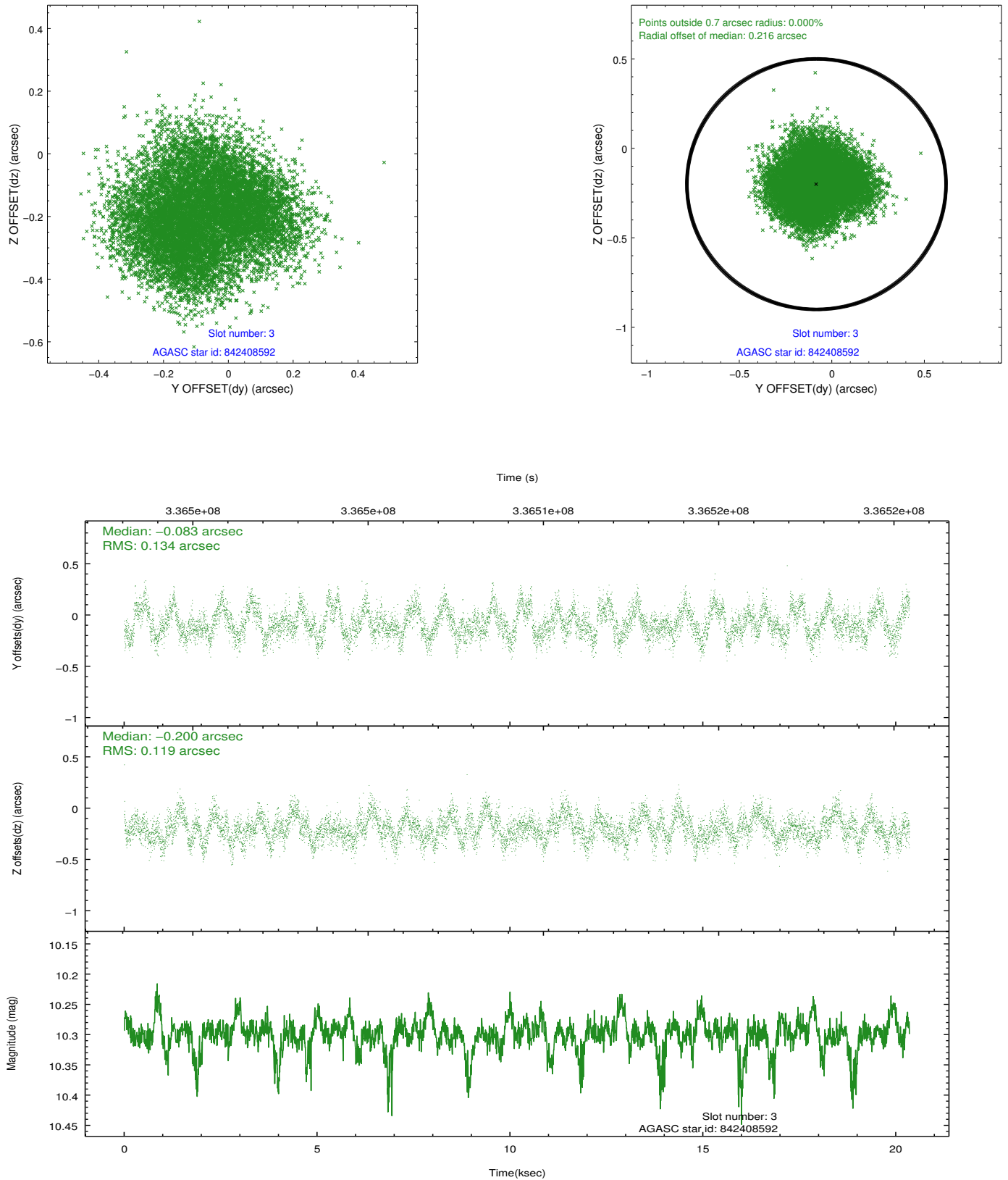


### Slot Statistics

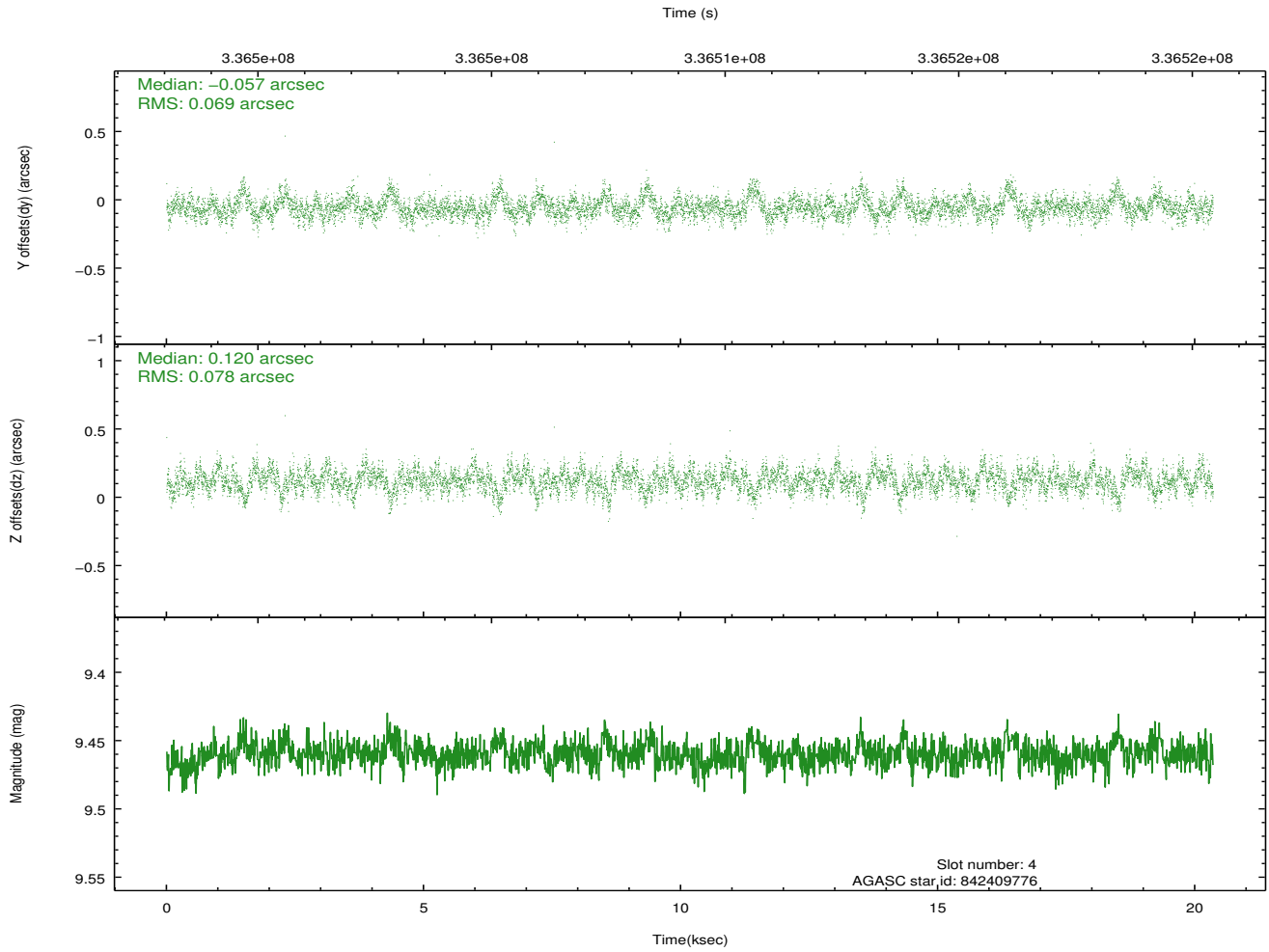
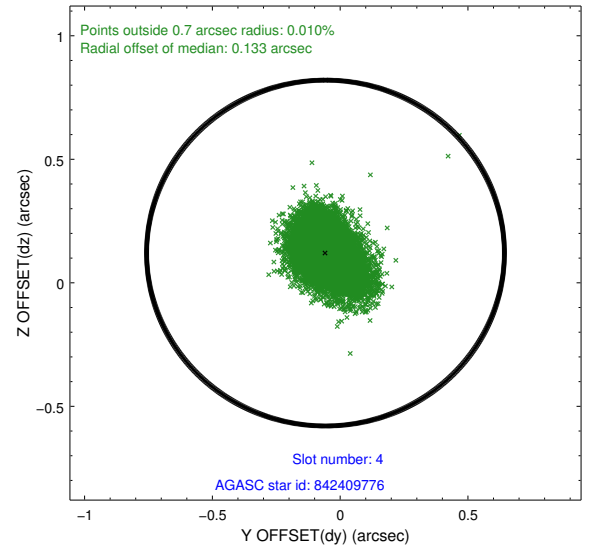
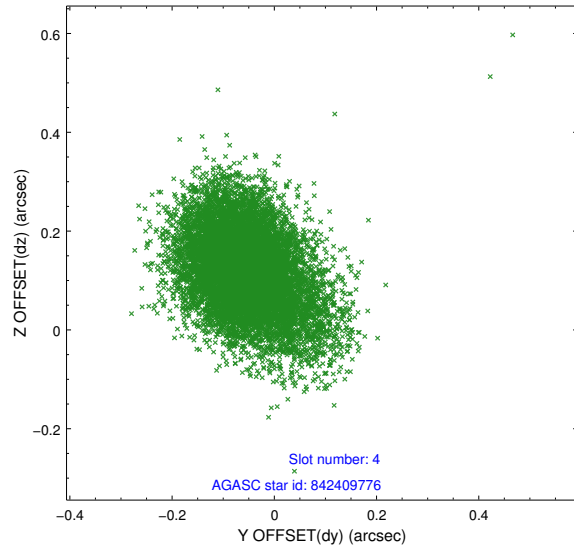
slot	status	id	mag	n_pts	med_dy	med_dz	dr1	dr2	ra	dec	mean_y	mean_z
0	FID	ACIS-I-1	7.05	4964	0.080	-0.021	0.007	0.013	0.000000	0.000000	925.71	-961.53
1	FID	ACIS-I-5	7.04	4965	-0.261	0.073	0.007	0.012	0.000000	0.000000	-1822.67	935.90
2	FID	ACIS-I-6	7.06	4964	0.090	0.019	0.006	0.010	0.000000	0.000000	391.03	1580.59
3	GUIDE	842408592	10.30	9911	-0.083	-0.200	0.196	0.293	19.006697	-27.301980	-1808.37	1206.84
4	GUIDE	842409776	9.46	9914	-0.057	0.120	0.108	0.186	19.652010	-27.516341	-1747.38	-993.93
5	GUIDE	842410272	9.85	9900	0.020	0.000	0.150	0.248	20.475219	-26.708211	1932.72	-2365.10
6	GUIDE	842410664	10.57	9885	0.088	0.140	0.220	0.356	19.546965	-27.604757	-2168.19	-802.65
7	GUIDE	842414040	9.31	9921	0.020	-0.065	0.118	0.185	19.404346	-27.012386	-362.15	420.13

## 2.4 Star Slots

### 2.4.1 Slot 3

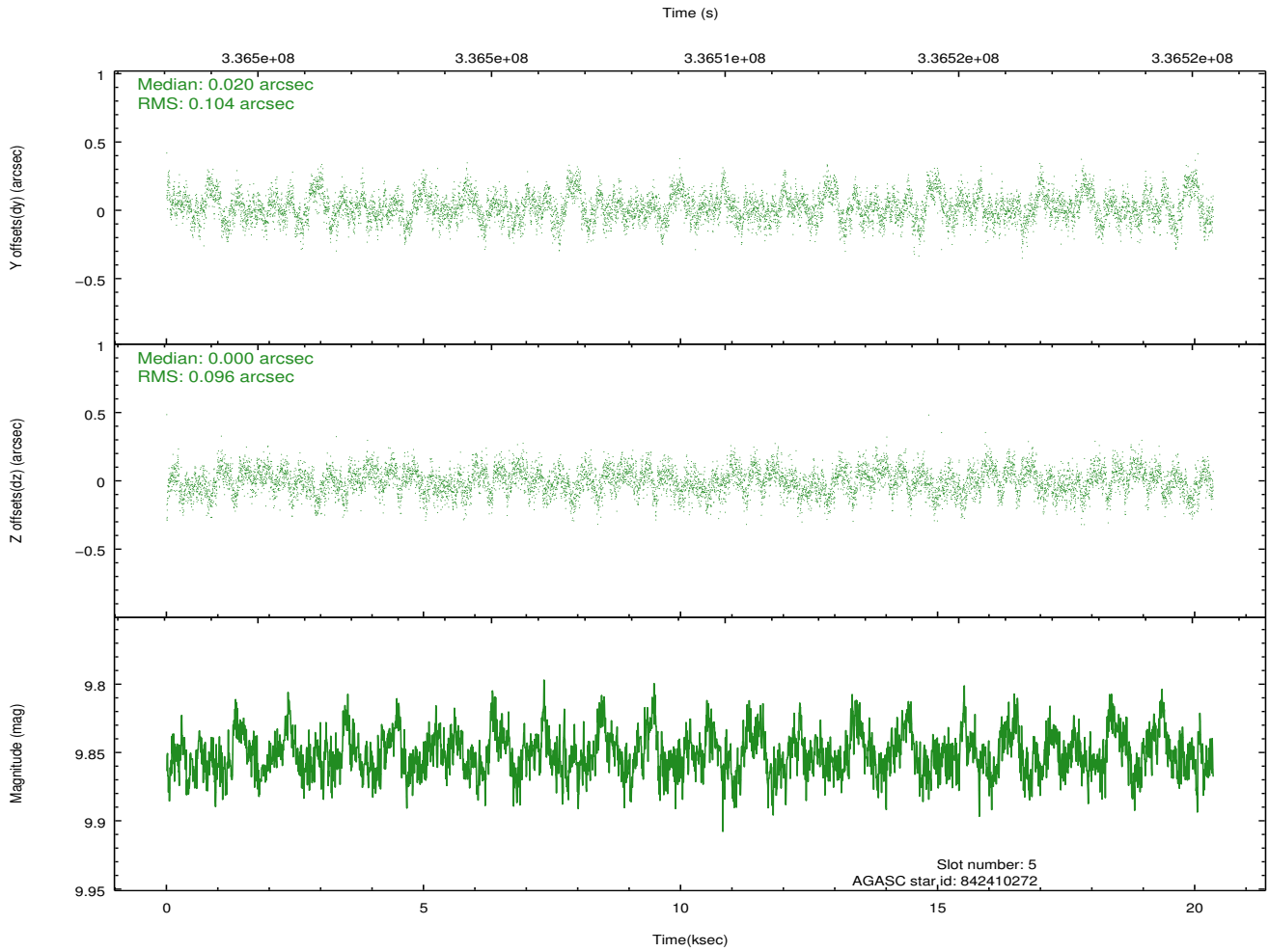
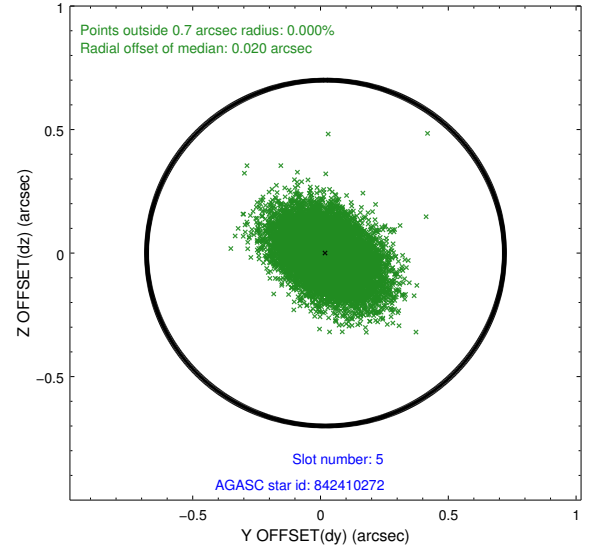
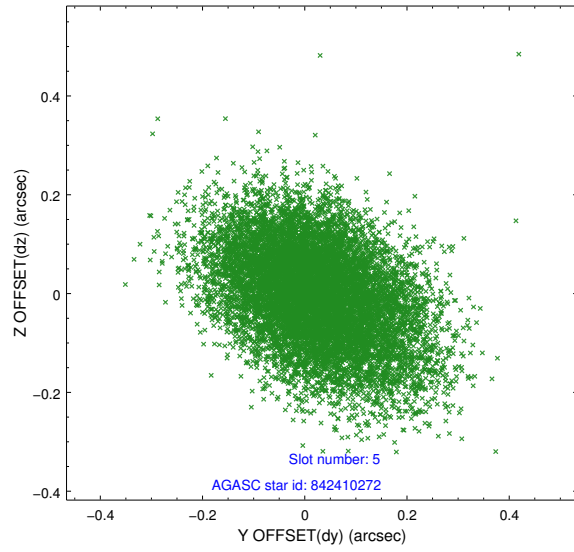


## 2.4.2 Slot 4

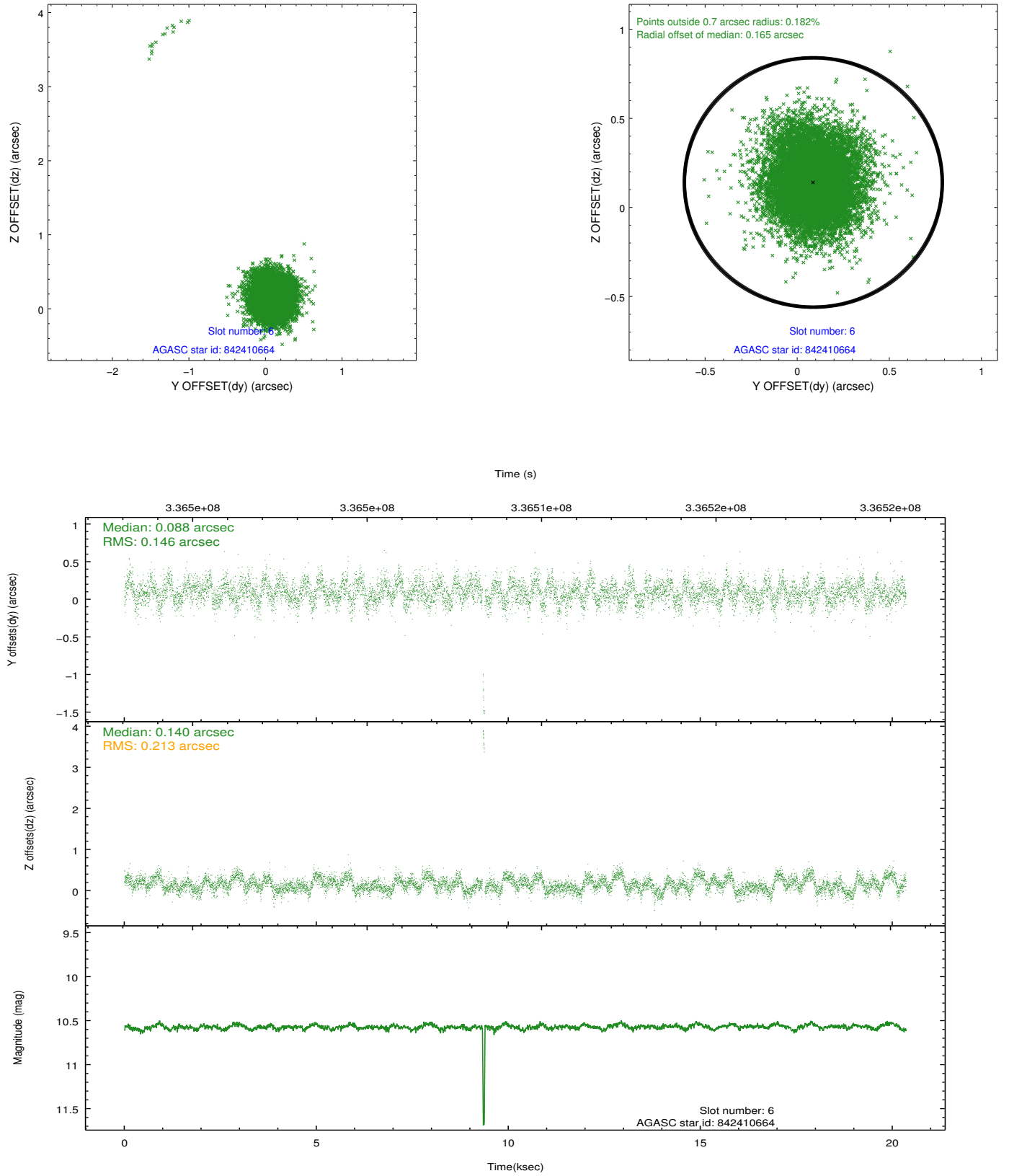




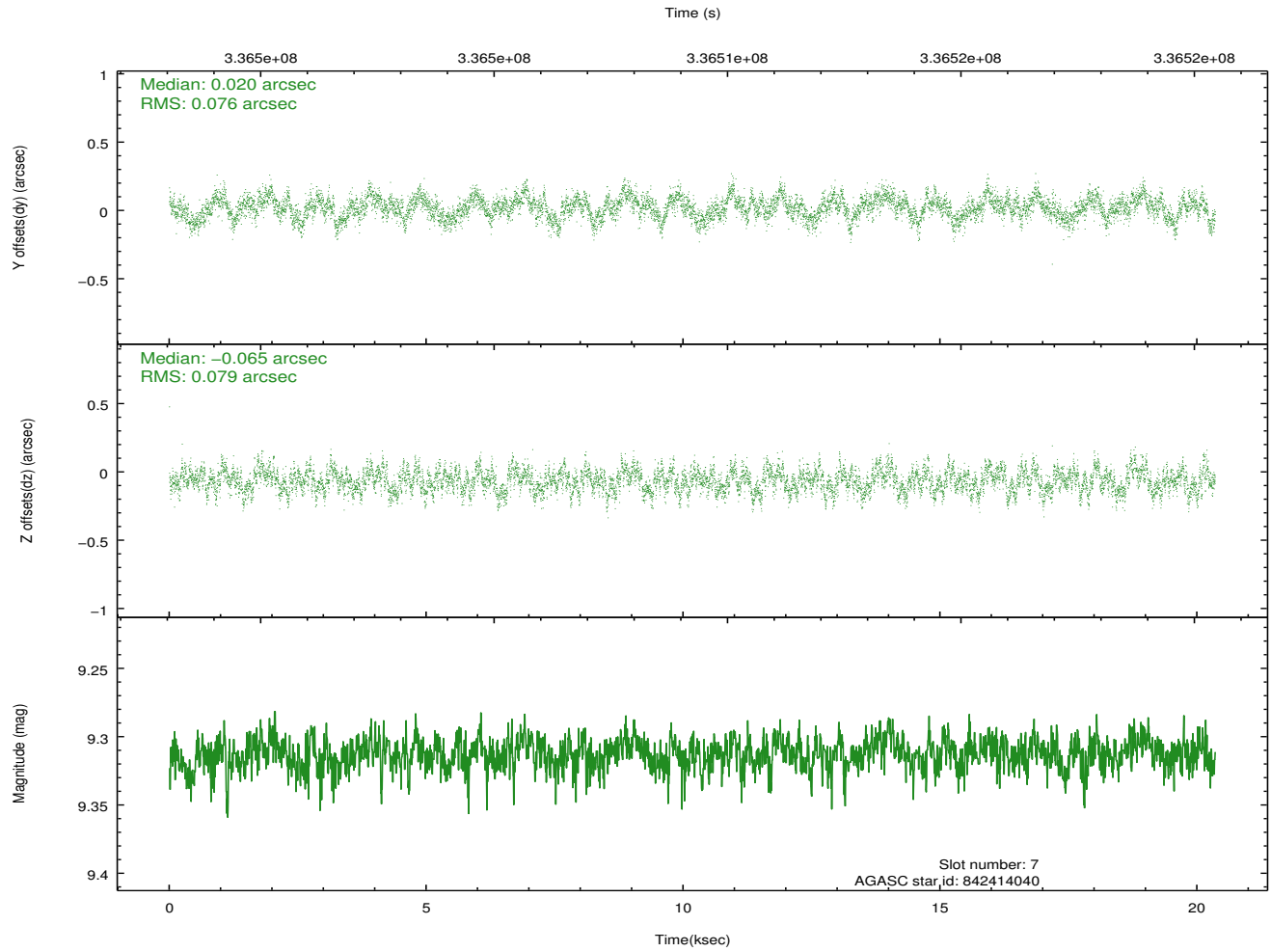
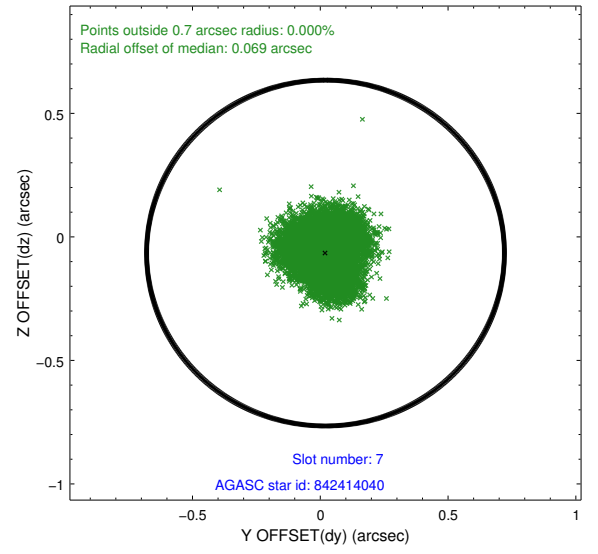
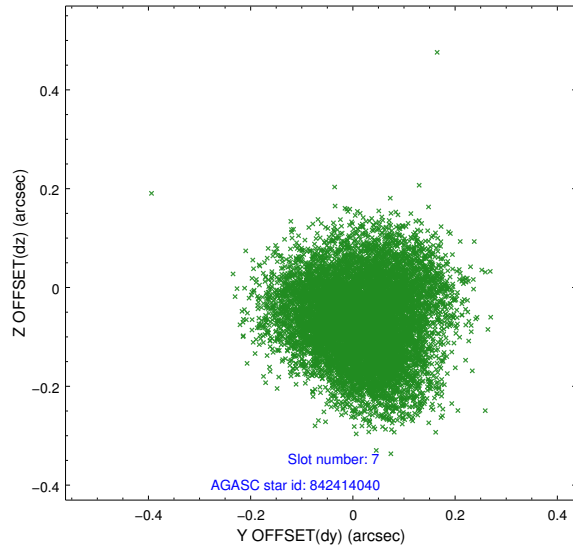
### 2.4.3 Slot 5



## 2.4.4 Slot 6

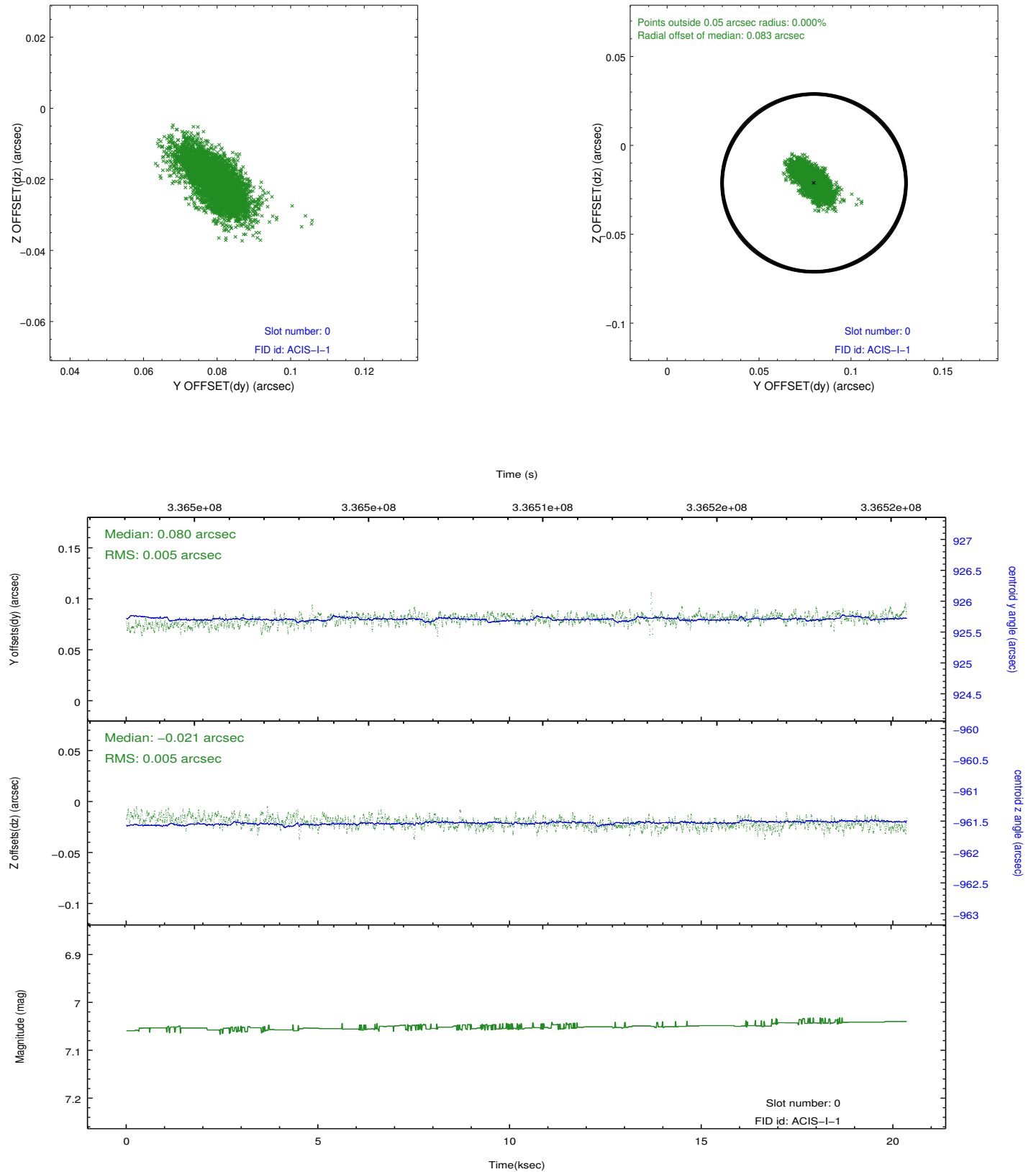


## 2.4.5 Slot 7

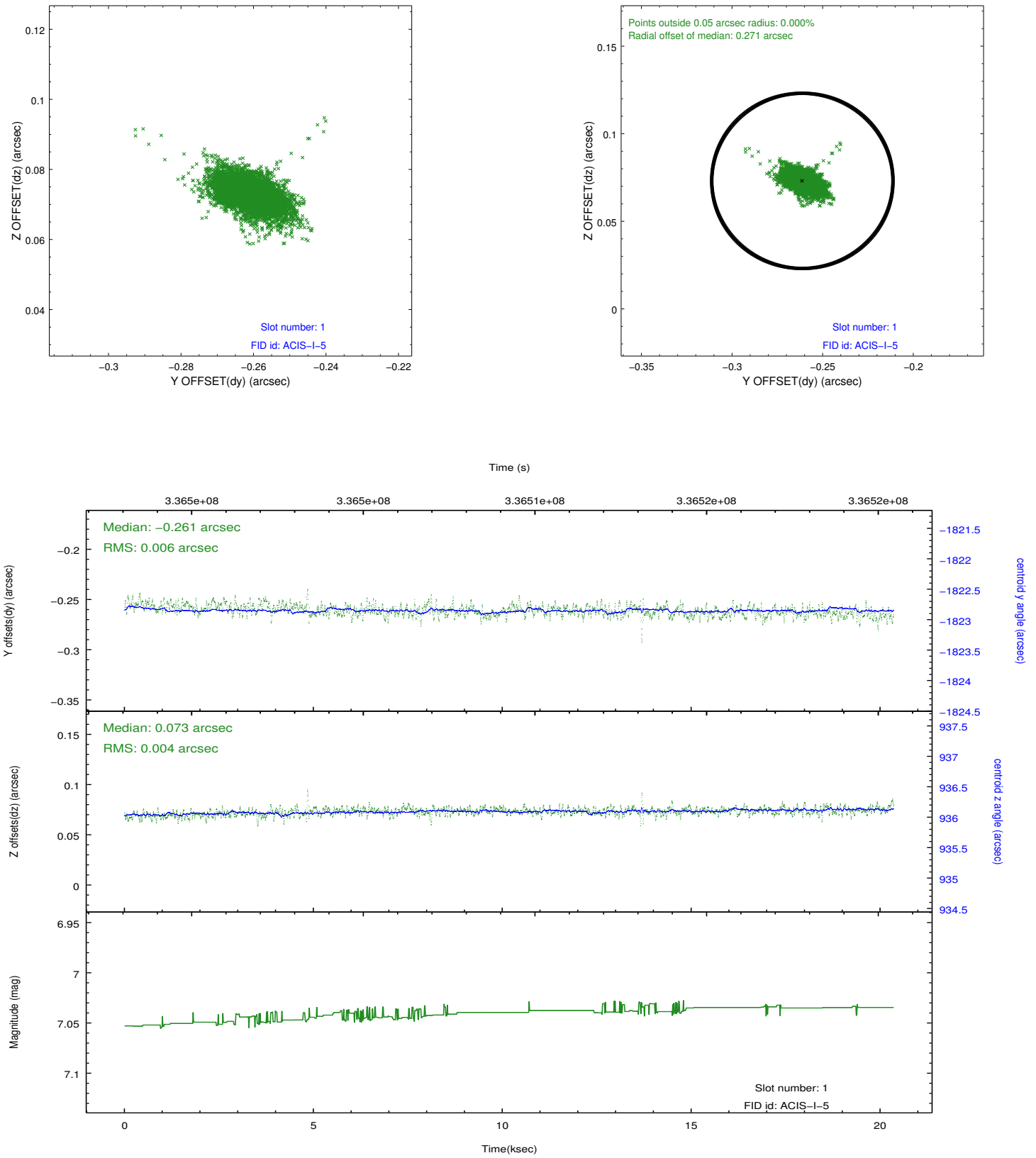


## 2.5 FID Slots

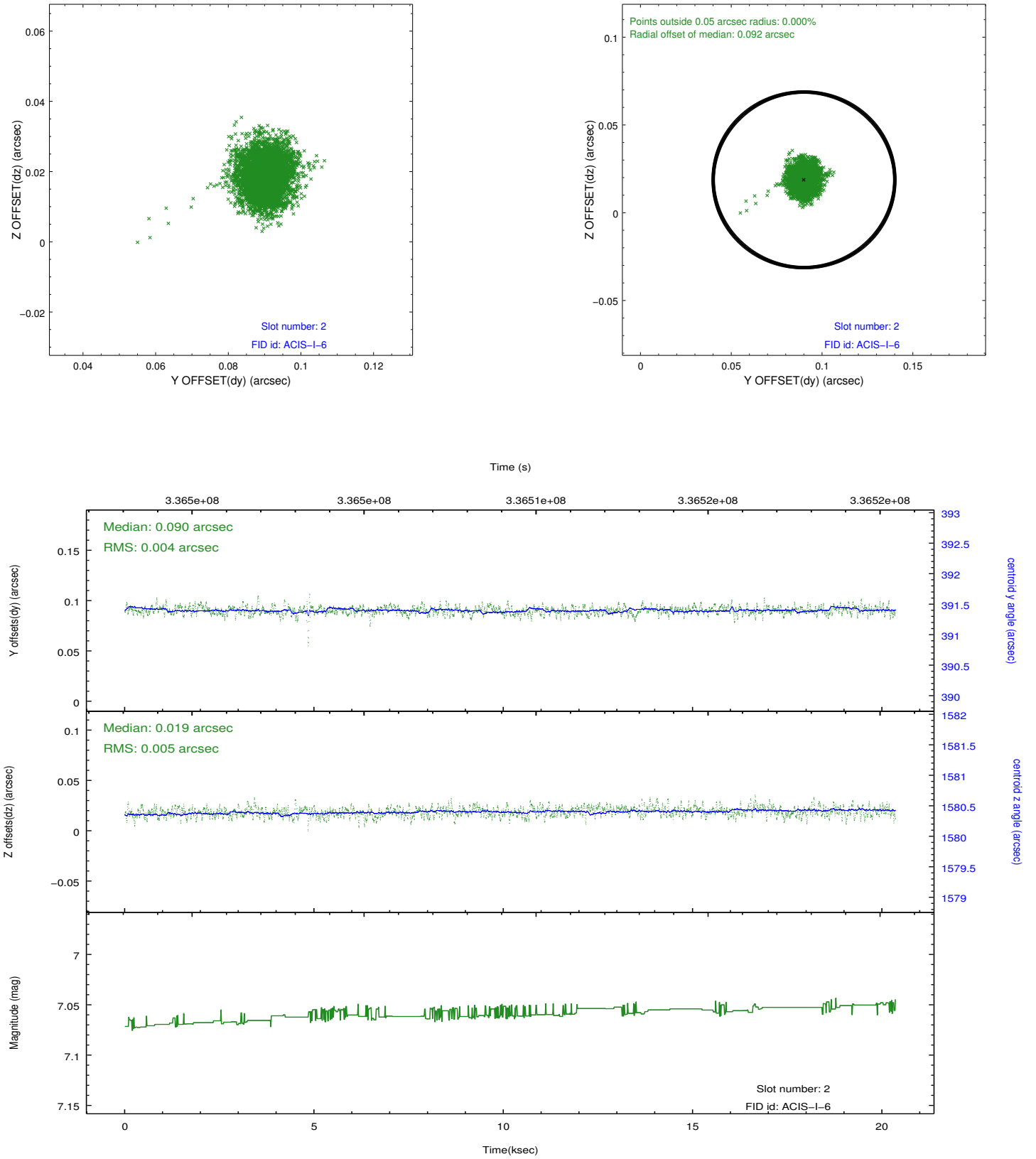
### 2.5.1 Slot 0



## 2.5.2 Slot 1



### 2.5.3 Slot 2



# A Summary

## A.1 Status

V&V Scientist	Beth Sundheim
V&V Date (YYYY-MM-DD)	2012.05.29
V&V Edition	1
V&V Disposition and Status	OK
V&V Charge Time	19.9423001

## A.2 Comments

Comments for Obi 1

Star in slot 6 has an RMS deviation > 0.200000 arcsec