

V&V Reference Report

L2 ASCDS Version : 8.4.4

Observation 9420 - L2 Version 2
Chandra X-Ray Center

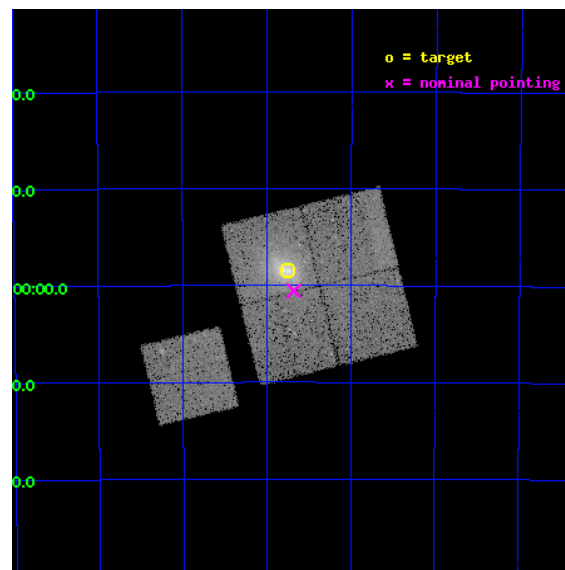
L2 Processing Date : May 12 2012

Contents

1	Front	2
2	OBI	3
2.1	OBI	3
2.1.1	Images	3
2.1.2	Bias	3
2.1.3	Parameters	4
2.1.4	Events	4
2.2	Compared Parameters	5
2.3	Aspect	6
2.4	Star Slots	9
2.4.1	Slot 3	9
2.4.2	Slot 4	10
2.4.3	Slot 5	11
2.4.4	Slot 6	12
2.4.5	Slot 7	13
2.5	FID Slots	14
2.5.1	Slot 0	14
2.5.2	Slot 1	15
2.5.3	Slot 2	16
A	Summary	17
A.1	Status	17
A.2	Comments	17

1 Front

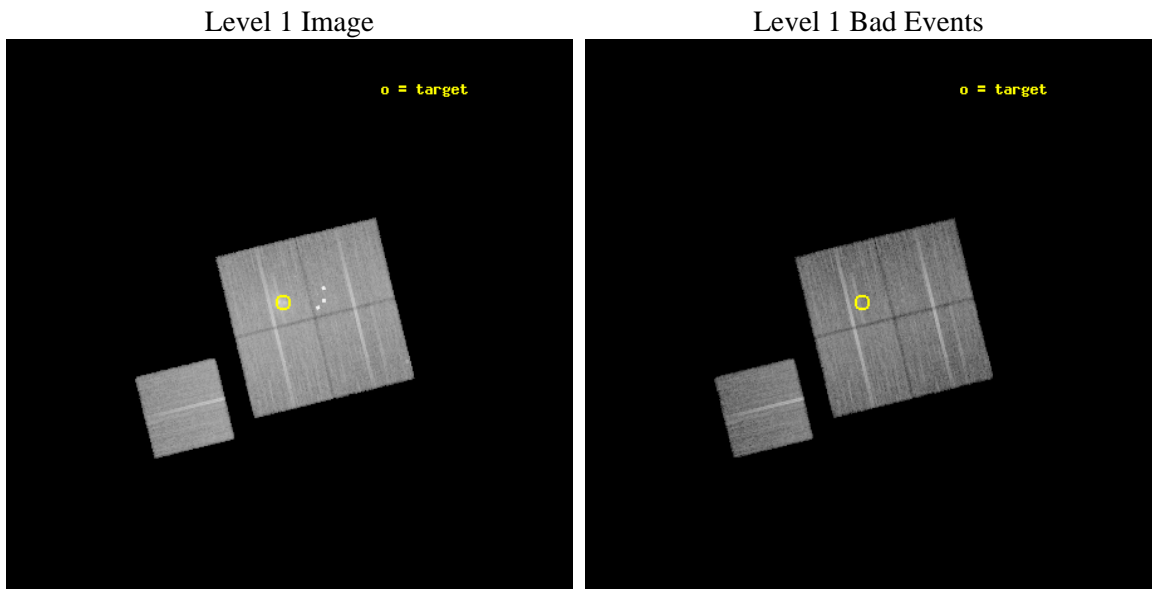
seq_num	800756	Sequence number
obs_id	9420	Observation id
title	LoCuSS: Cluster Mass Comparison with Chandra and HST -- Observational Discrepancy or Agreement in the New Millennium?	Proposal title
observer	Dr Graham Smith	Principal investigator
object	RXCJ0638.7-5358	Source name
dtcycle	0	
cycle	P	events from which exps? Prim/Second/Both
ra_targ	99.688458	Observer's specified target RA [deg]
dec_targ	-53.973139	Observer's specified target Dec [deg]
ra_nom	99.670129960132	Nominal RA [deg]
dec_nom	-54.009311897303	Nominal Dec [deg]
roll_nom	256.27934379329	Nominal Roll [deg]
revision	2	Processing version of data
ontime	20159.195232391	Sum of GTIs [s]
livetime	19895.800505697	Livetime [s]
ontime0	20155.931082189	Sum of GTIs [s]
ontime1	20159.113152385	Sum of GTIs [s]
ontime2	20159.154192388	Sum of GTIs [s]
ontime3	20159.195232391	Sum of GTIs [s]
ontime6	20155.890082002	Sum of GTIs [s]
l2events	91328	Number of level 2 events



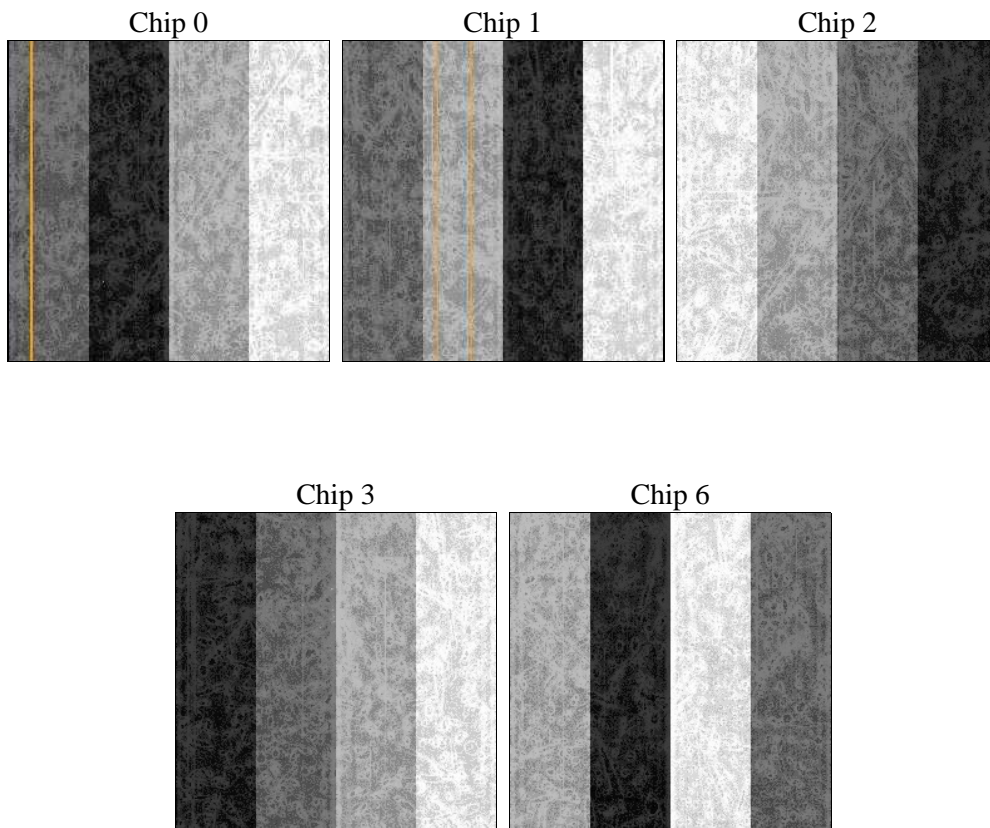
2 OBI

2.1 OBI

2.1.1 Images



2.1.2 Bias



2.1.3 Parameters

obi_num	0	Obi number	sched_exp_time	20000.000000	[s] Scheduled observation exposure time
ascdsver	8.4.4	Processing system revision	ontime	20159.195232391	Sum of GTIs [s]
caldsver	4.4.9	 	ontime0	20155.931082189	Sum of GTIs [s]
date	2012-05-13T00:19:09	Date and time of file creation	ontime1	20159.113152385	Sum of GTIs [s]
revision	2	Processing version of data	ontime2	20159.154192388	Sum of GTIs [s]
			ontime3	20159.195232391	Sum of GTIs [s]
			ontime6	20155.890082002	Sum of GTIs [s]
			l1events	833535	Number of level 1 events

2.1.4 Events

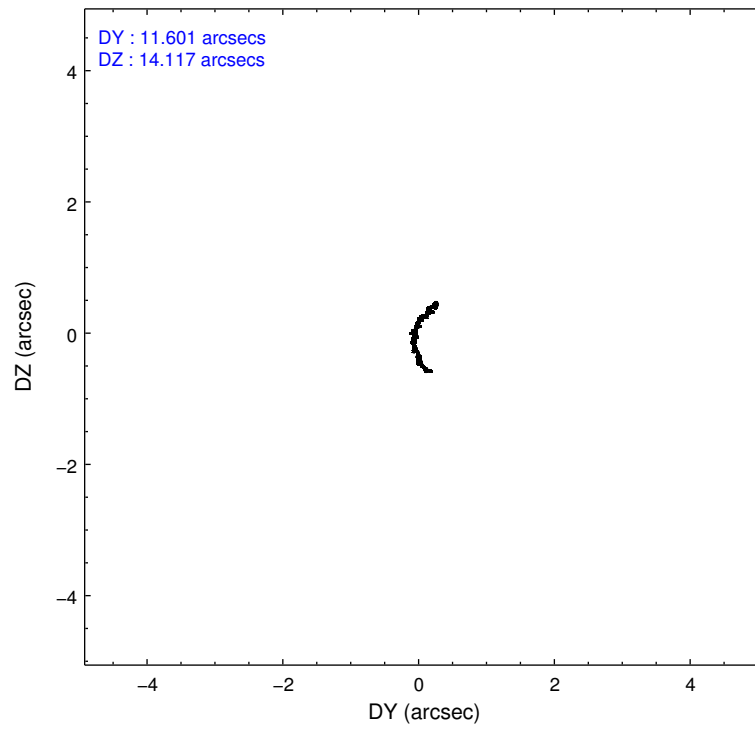
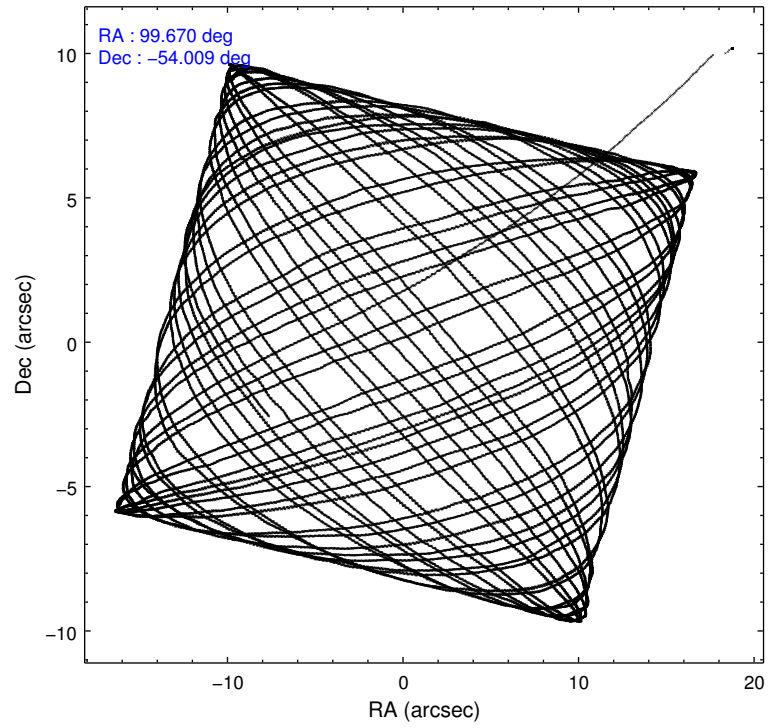
	ccd 0	ccd 1	ccd 2	ccd 3	ccd 6
level 1 events	146692	170615	172043	184736	159449
rejected events	130066	134111	155122	146817	142742
rejected %	88%	78%	90%	79%	89%

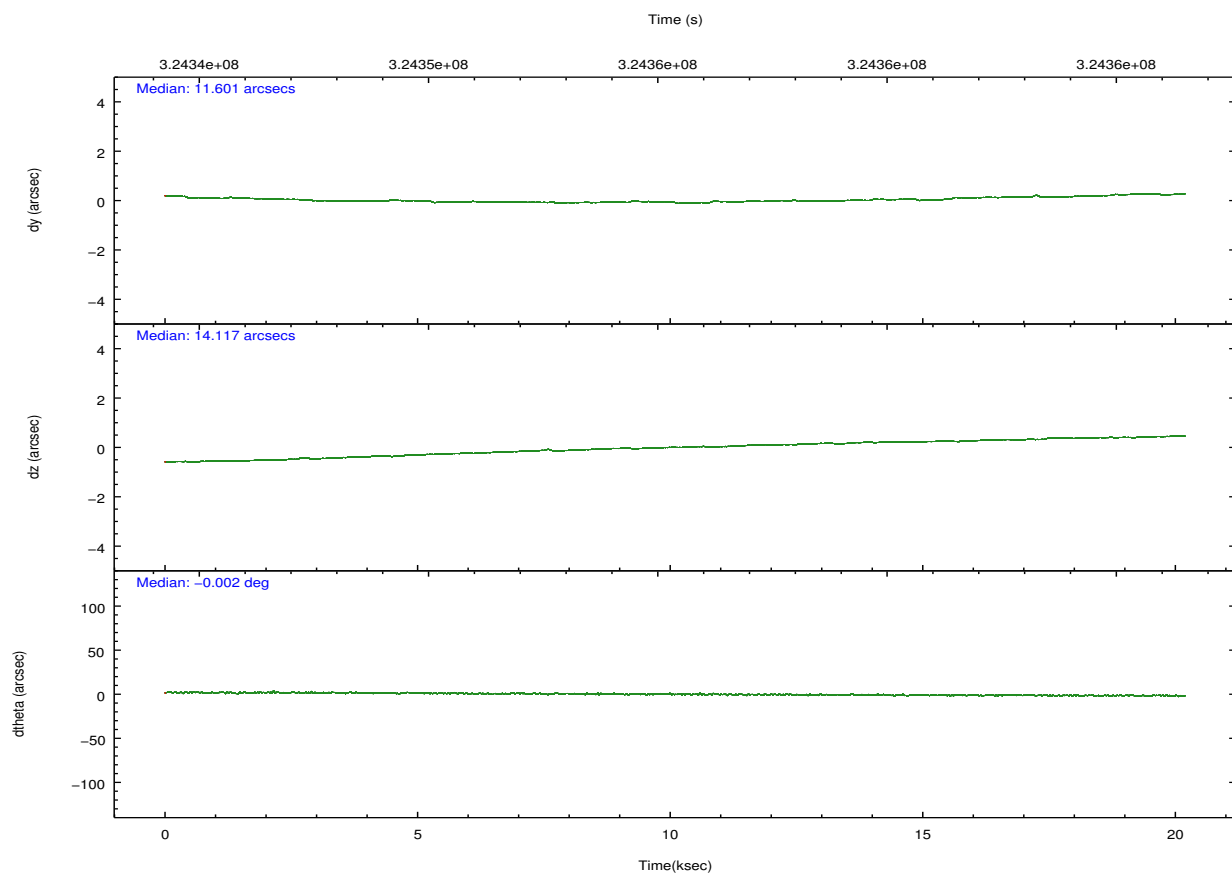
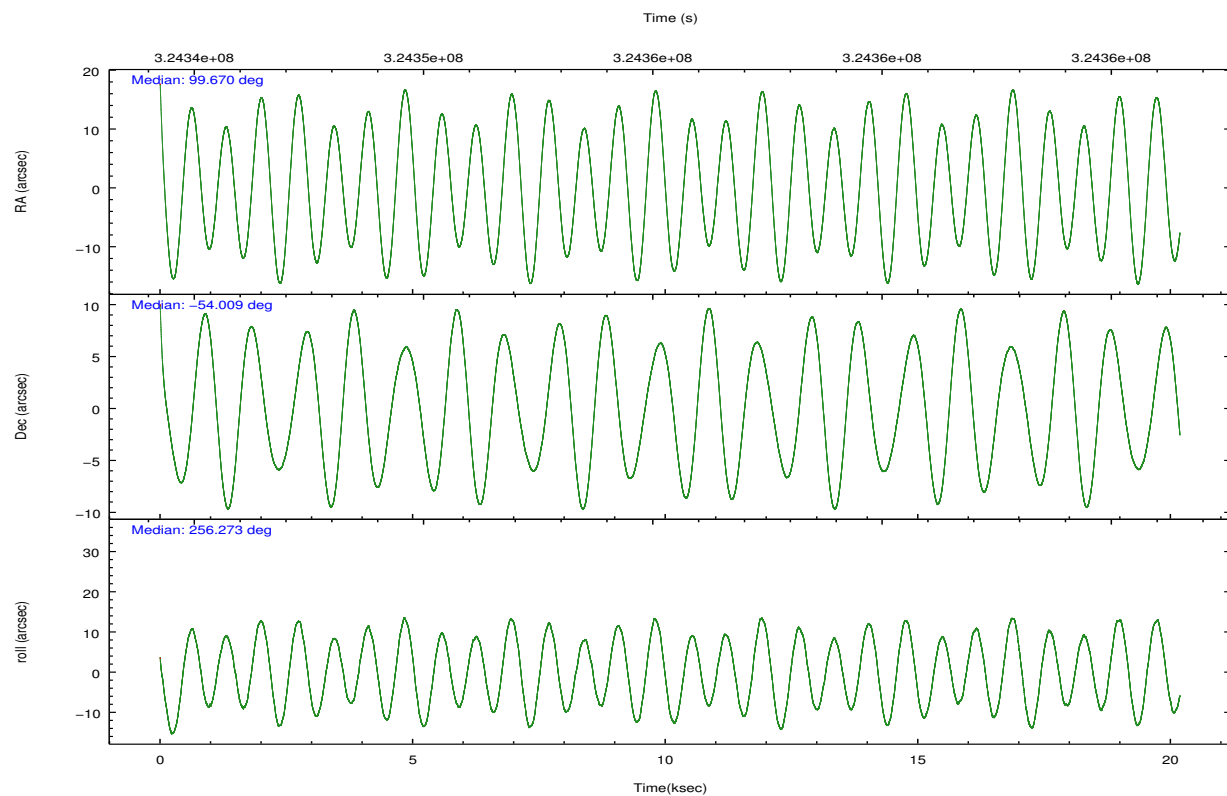
	ccd 0	ccd 1	ccd 2	ccd 3	ccd 6
grade 0 events	5940	24834	6499	23916	5896
	4%	14%	3%	12%	3%
grade 1 events	110	199	115	218	79
	0%	0%	0%	0%	0%
grade 2 events	4039	4180	3979	5653	3665
	2%	2%	2%	3%	2%
grade 3 events	1767	2014	1691	2418	1838
	1%	1%	0%	1%	1%
grade 4 events	1710	1931	1755	2349	1790
	1%	1%	1%	1%	1%
grade 5 events	5829	6279	5436	6668	6423
	3%	3%	3%	3%	4%
grade 6 events	3184	3557	3001	3600	3524
	2%	2%	1%	1%	2%
grade 7 events	124113	127621	149567	139914	136234
	84%	74%	86%	75%	85%

2.2 Compared Parameters

Parameter	Planned	Actual	Parameter	Planned	Actual
Instrument	ACIS	ACIS	Obspar format version number	7	7
Detector	ACIS-01236	ACIS-01236	Obspar file type	PREDICTED	ACTUAL
Grating	NONE	NONE	Obspar update status	NONE	UPDATED
Data mode	VFAINT	VFAINT	Number of optional ACIS chips dropped	0	0
Observation mode	POINTING	POINTING	On-chip summing requested	N	N
[deg] Pointing RA	99.656875	99.67012996013206	Subarray requested	NONE	NONE
[deg] Pointing Dec	-53.982951	-54.00931189730342	Alternating exposures requested	N	N
[deg] Pointing Roll	256.059937	256.2793437932869	[s] Primary exposure time	0.000000	3.1
[mm] SIM focus pos	-0.782348	-0.7809083437167272			
[mm] SIM defocus	0	0.001439871863259334			
[mm] SIM translation stage pos	-227.592463	-227.5933067819097			
[mm] SIM translation stage offset	-6	-5.999146221020027			
[s] Observation start time (MET)	324345470.184000	324344482.61826			
Observation start date	2008-04-11T23:56:45	2008-04-11T23:41:22			
[s] Observation end time (MET)	324365470.184000	324366297.69432			
Observation end date	2008-04-12T05:30:05	2008-04-12T05:44:57			
Read mode	TIMED	TIMED			

2.3 Aspect



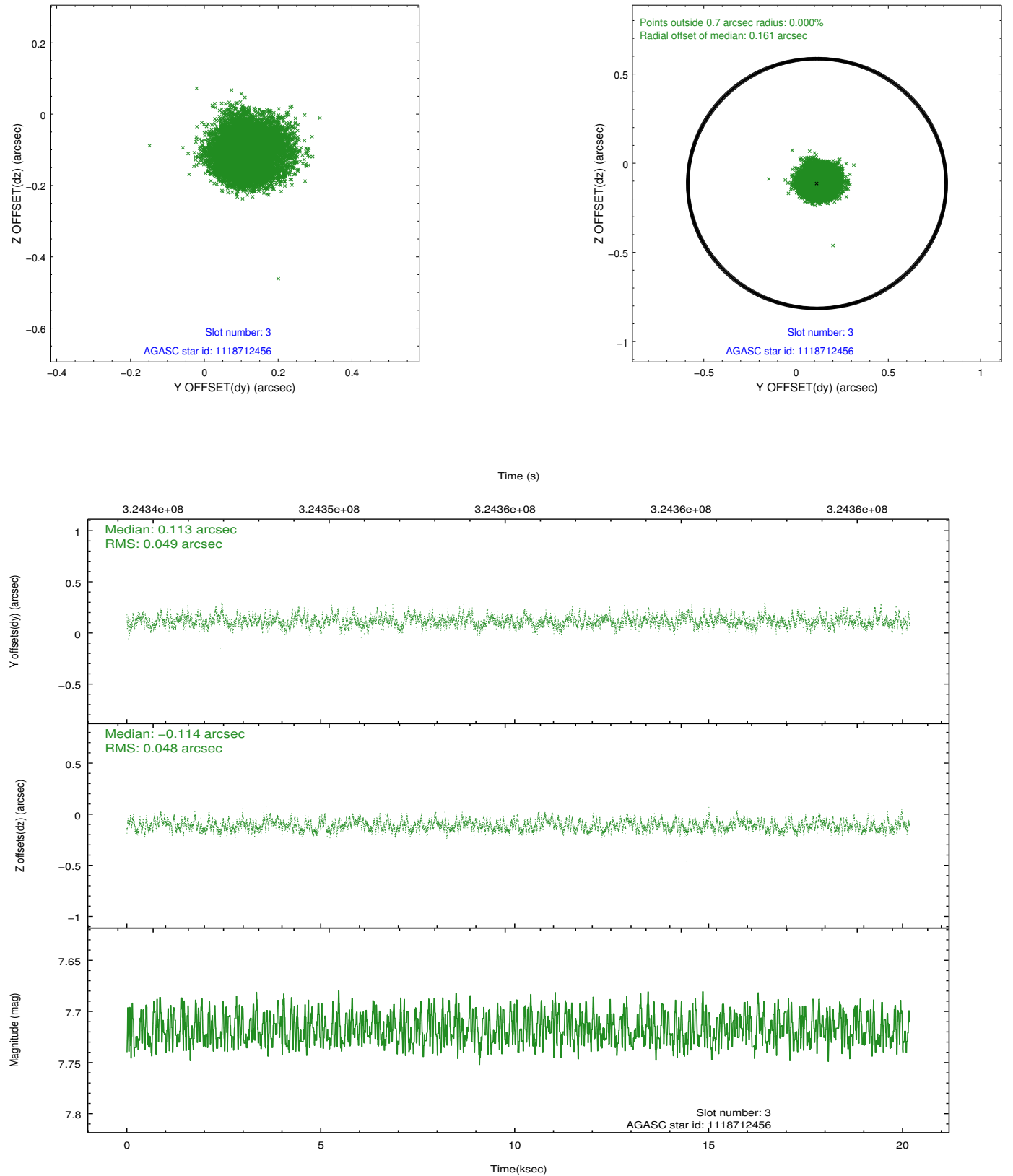


Slot Statistics

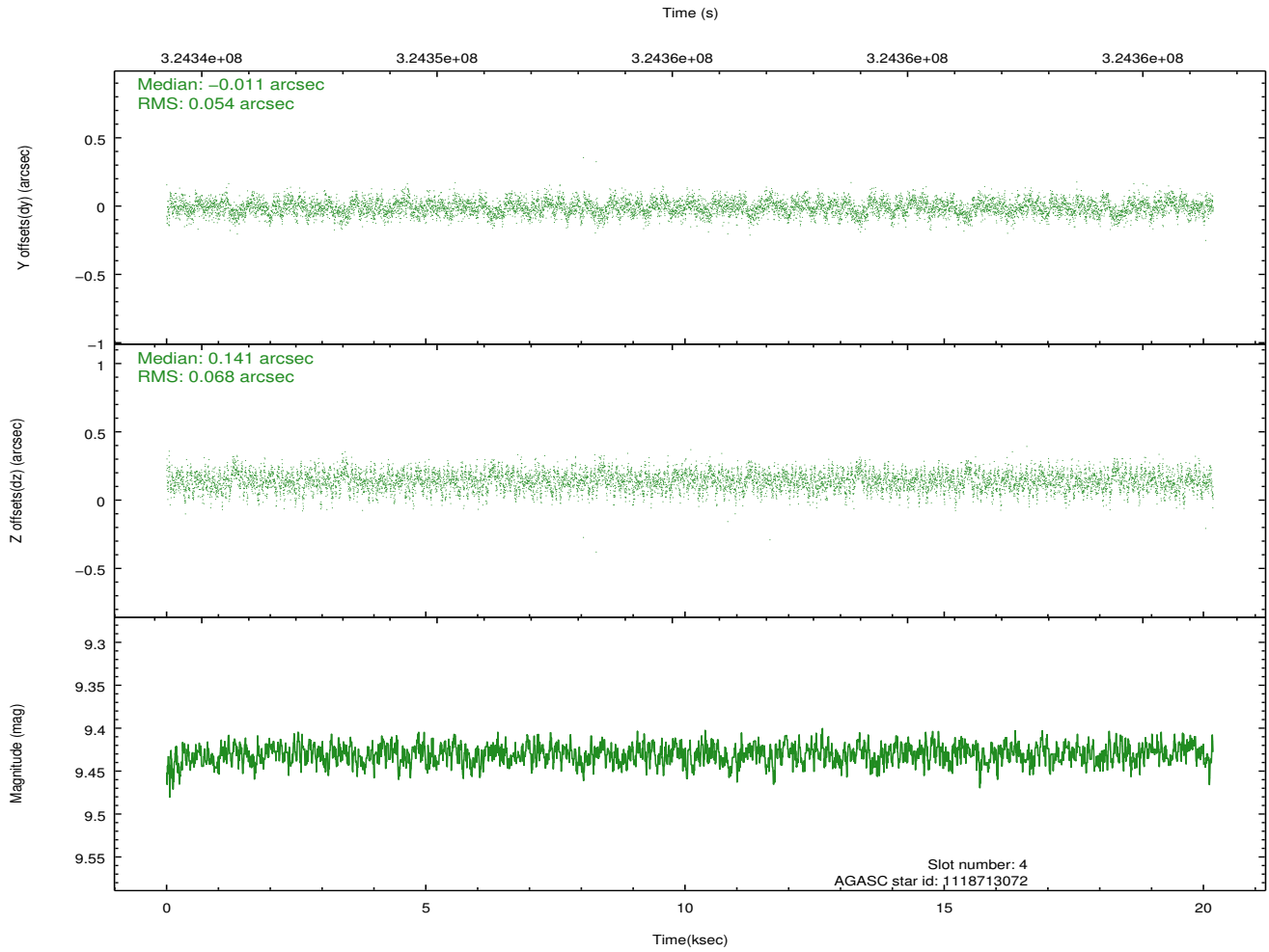
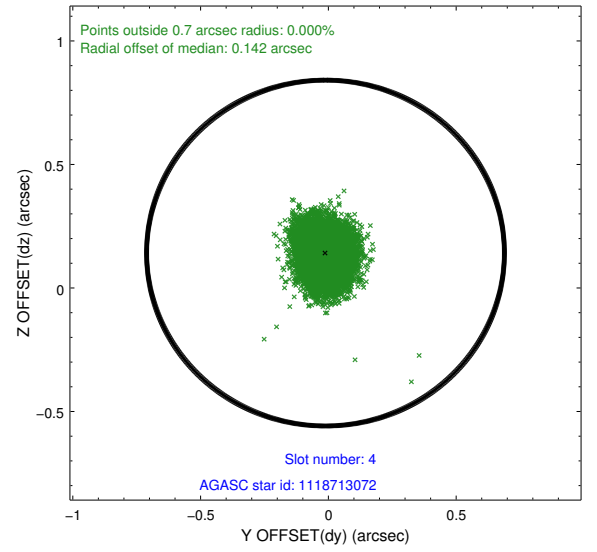
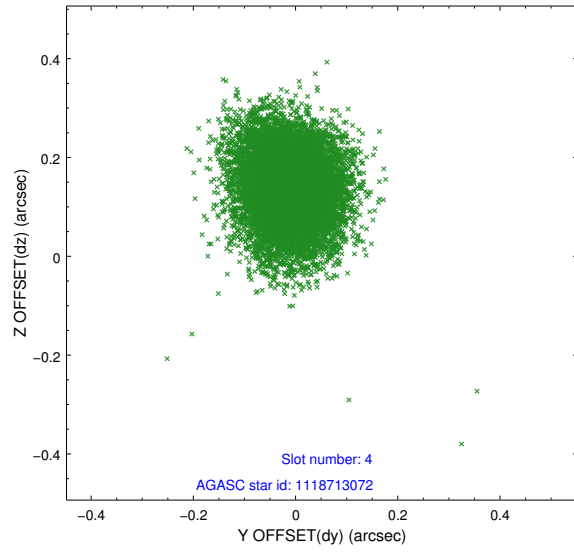
slot	status	id	mag	n_pts	med_dy	med_dz	dr1	dr2	ra	dec	mean_y	mean_z
0	FID	ACIS-I-1	7.07	4924	0.097	-0.045	0.014	0.023	0.000000	0.000000	927.90	-960.84
1	FID	ACIS-I-5	7.06	4924	-0.229	0.096	0.011	0.016	0.000000	0.000000	-1820.43	936.67
2	FID	ACIS-I-6	7.08	4924	0.042	0.019	0.010	0.018	0.000000	0.000000	393.18	1581.32
3	GUIDE	1118712456	7.72	9846	0.113	-0.114	0.073	0.116	99.930550	-53.451369	-1997.27	108.99
4	GUIDE	1118713072	9.43	9836	-0.011	0.141	0.092	0.150	98.807514	-53.389424	-1623.73	-2281.55
5	GUIDE	1118715984	8.89	9838	-0.088	-0.023	0.084	0.134	98.870437	-53.710801	-538.08	-1859.94
6	GUIDE	1119356480	8.29	9844	-0.075	-0.118	0.059	0.097	100.106738	-54.468226	1471.66	1335.37
7	GUIDE	1118713136	8.53	9839	0.055	0.116	0.081	0.129	98.414415	-54.117213	1123.69	-2421.56

2.4 Star Slots

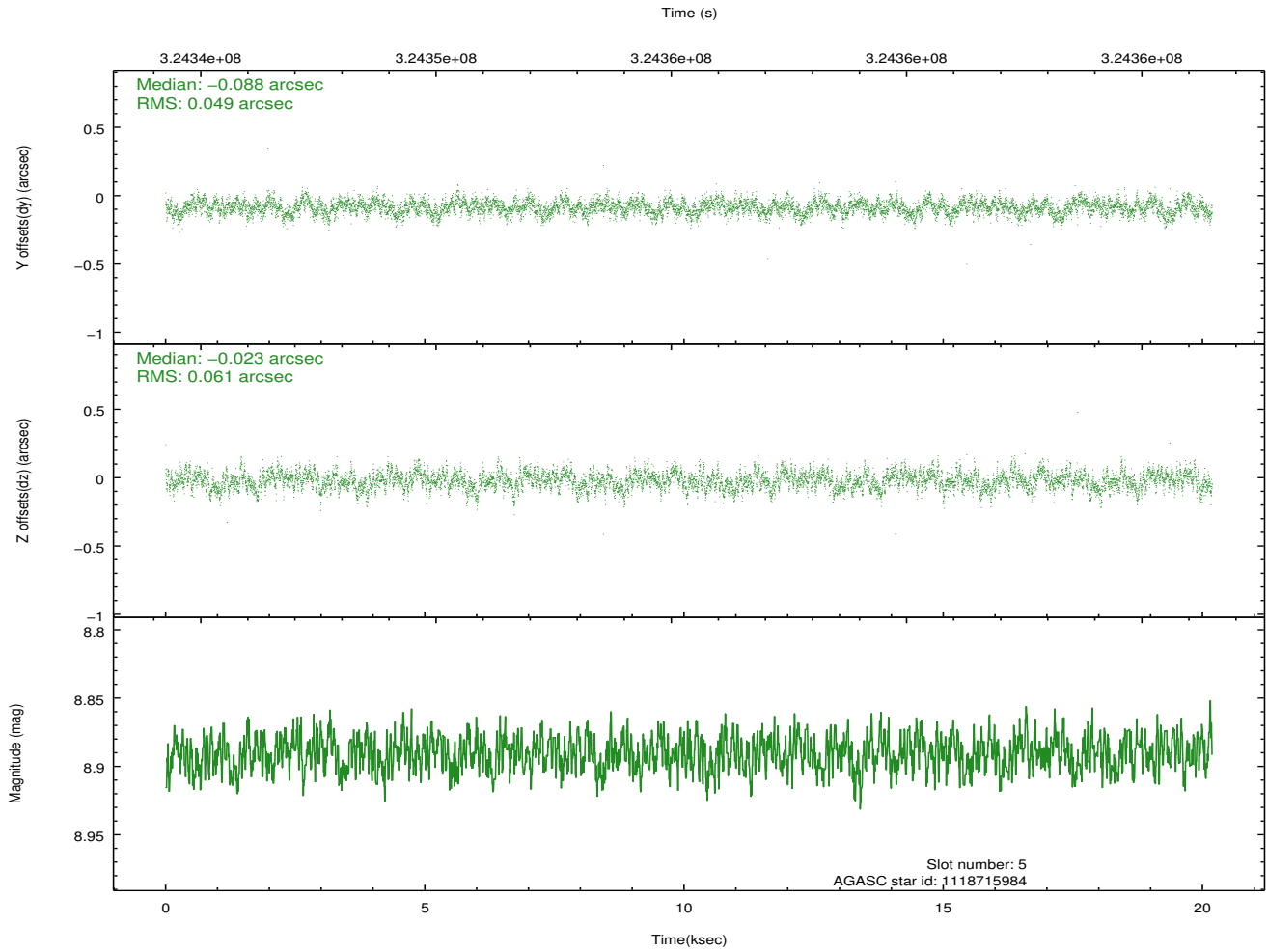
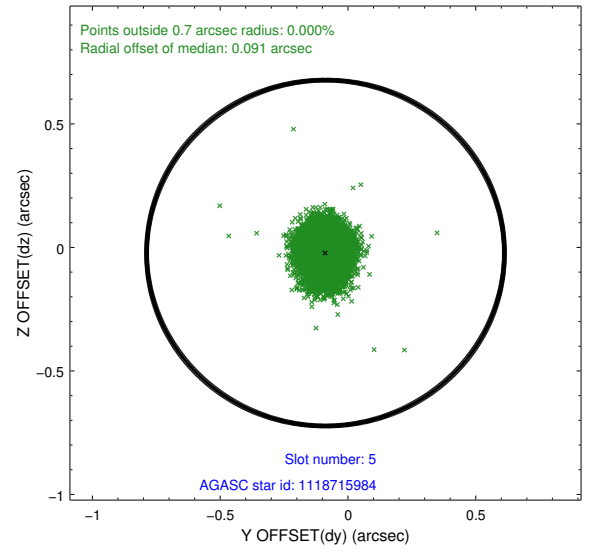
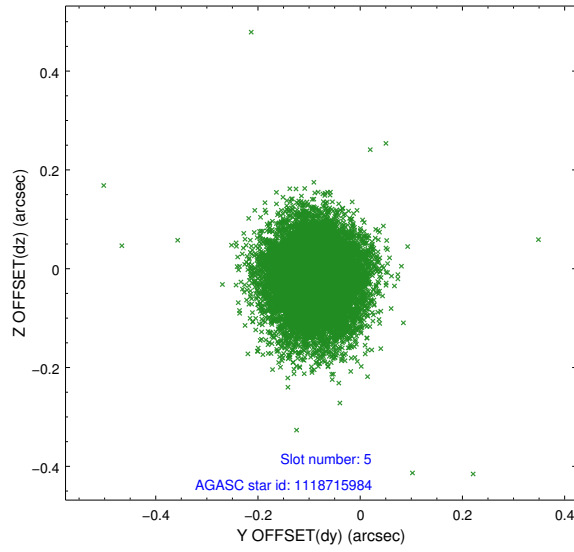
2.4.1 Slot 3



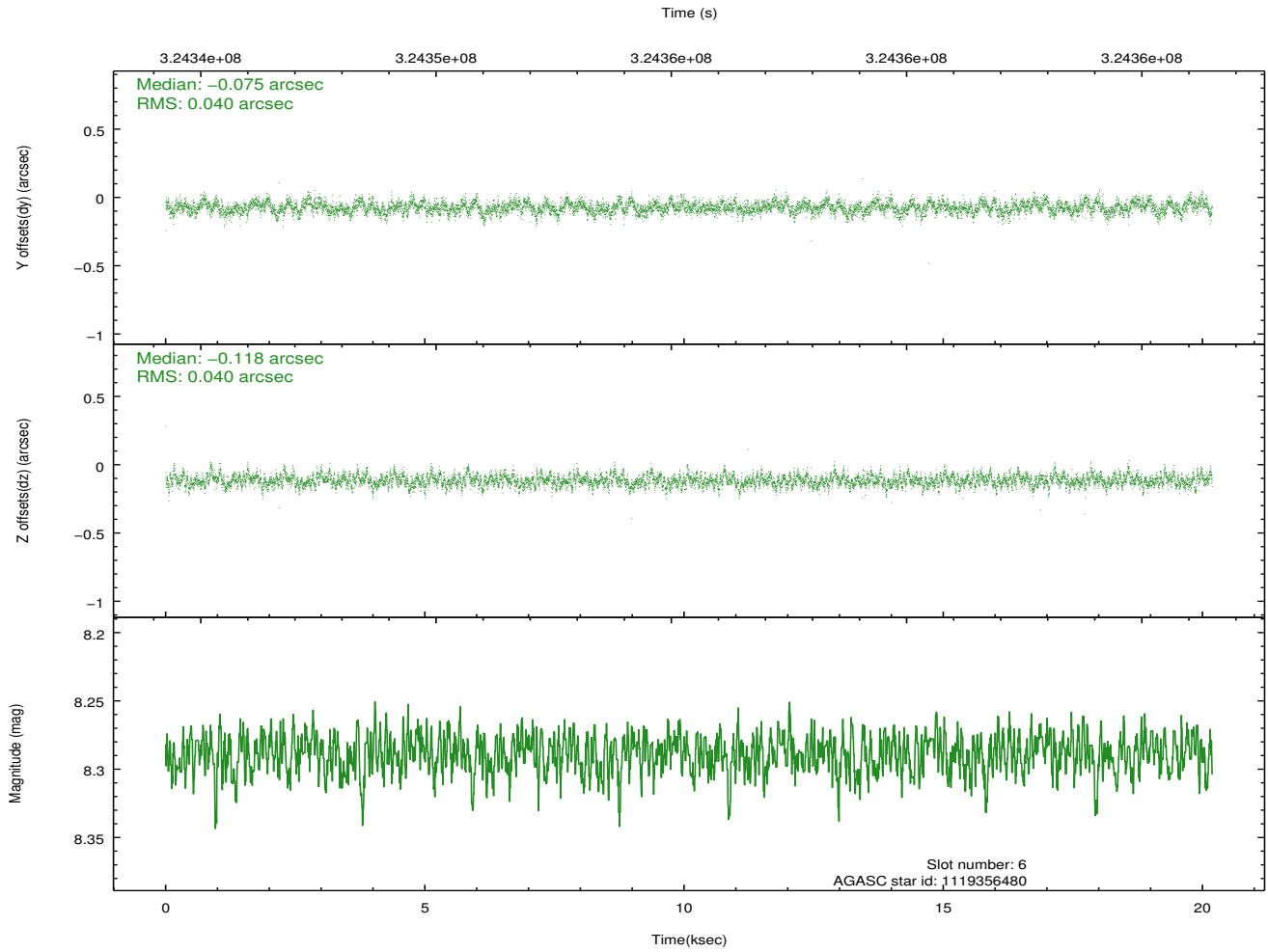
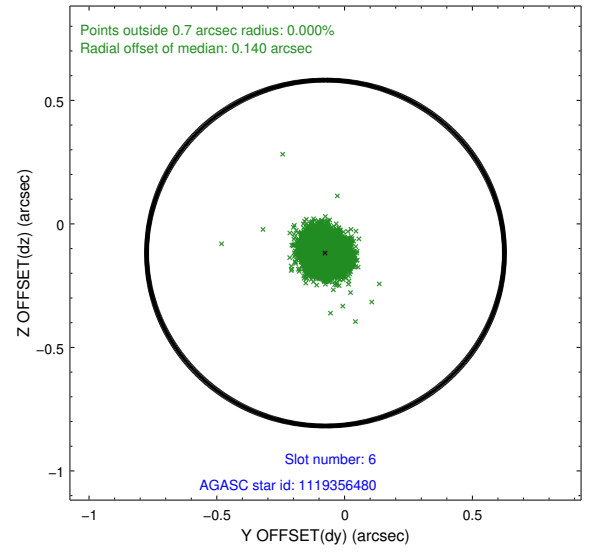
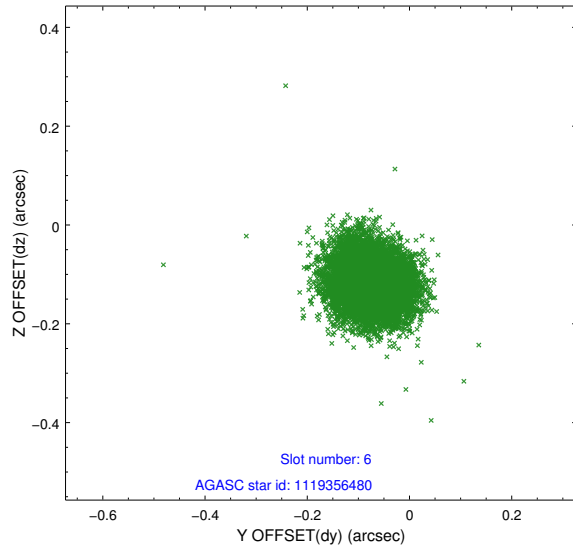
2.4.2 Slot 4



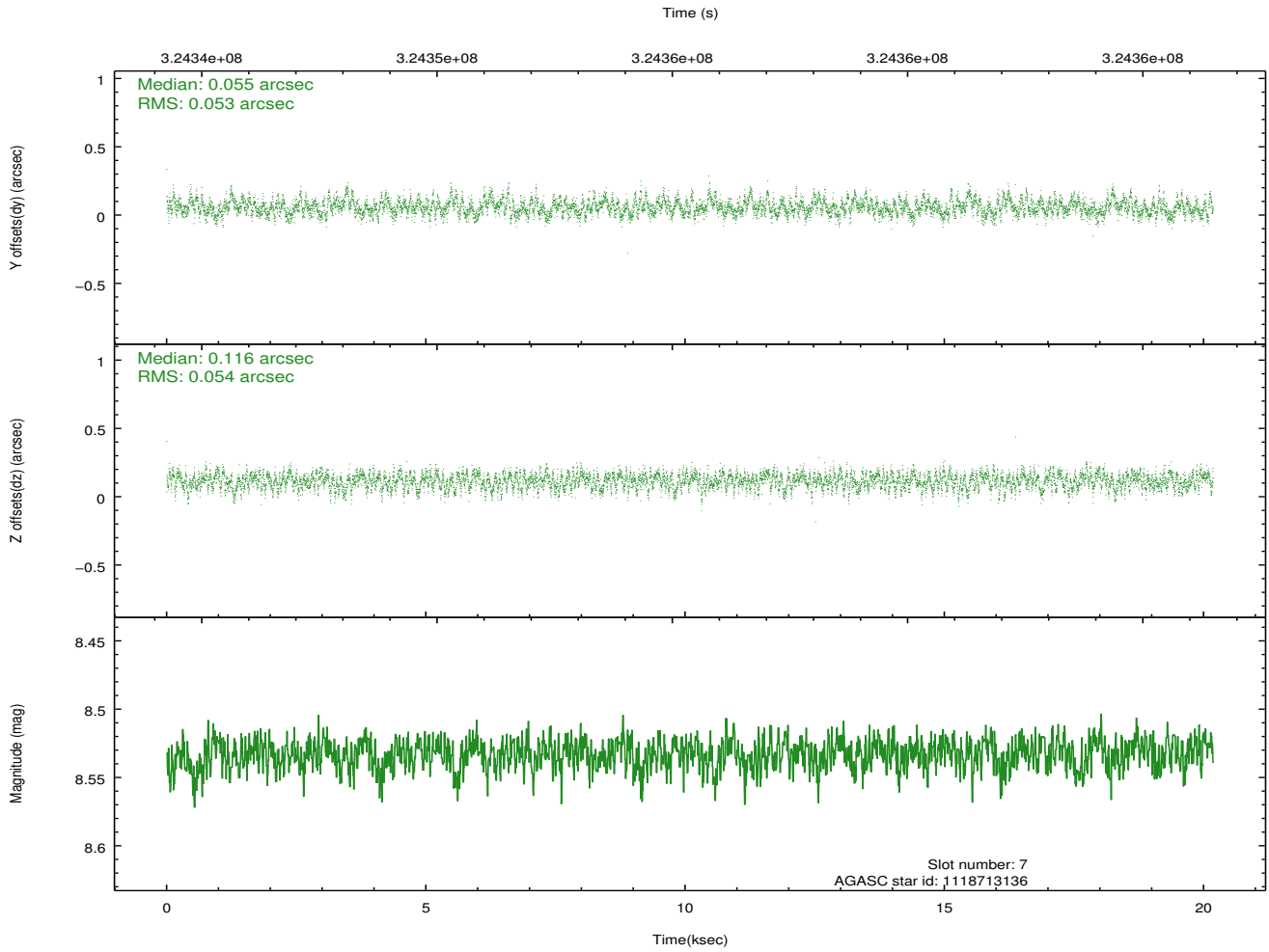
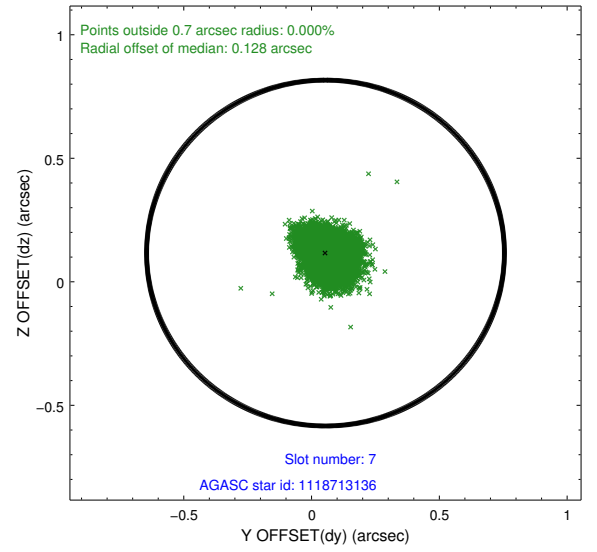
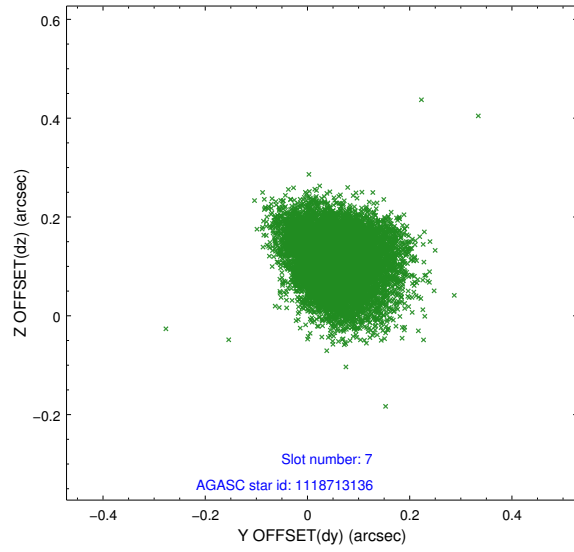
2.4.3 Slot 5



2.4.4 Slot 6

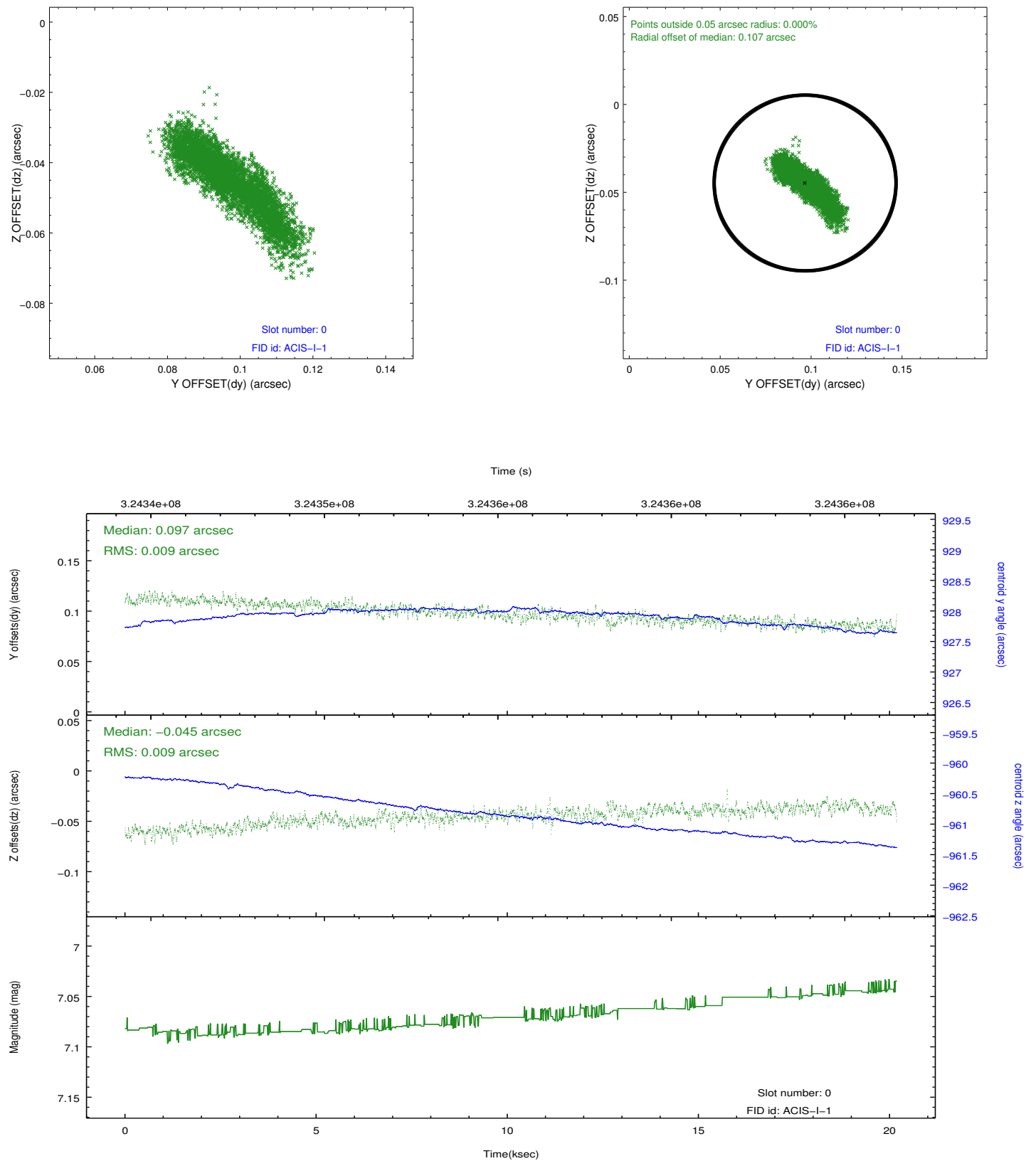


2.4.5 Slot 7

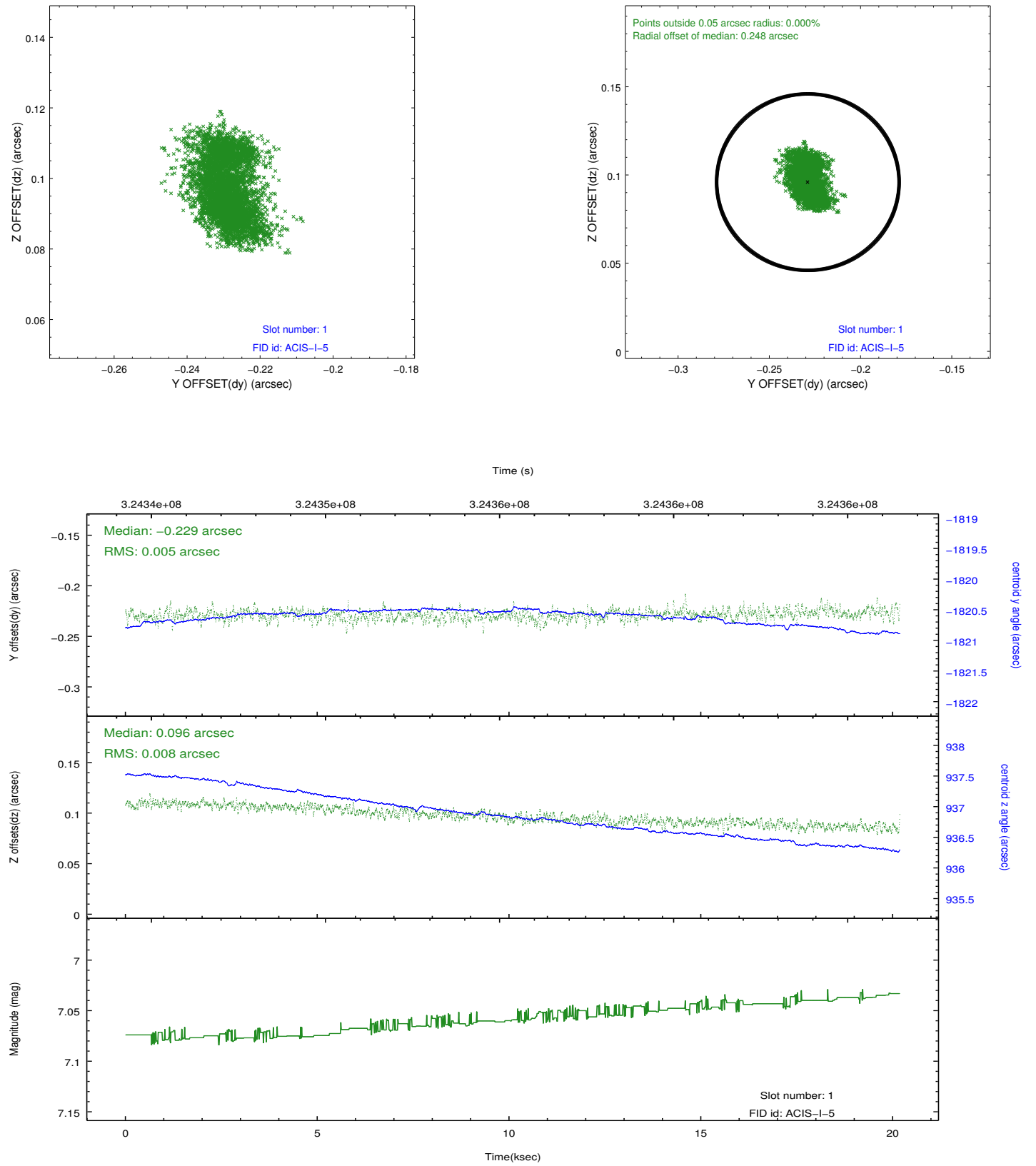


2.5 FID Slots

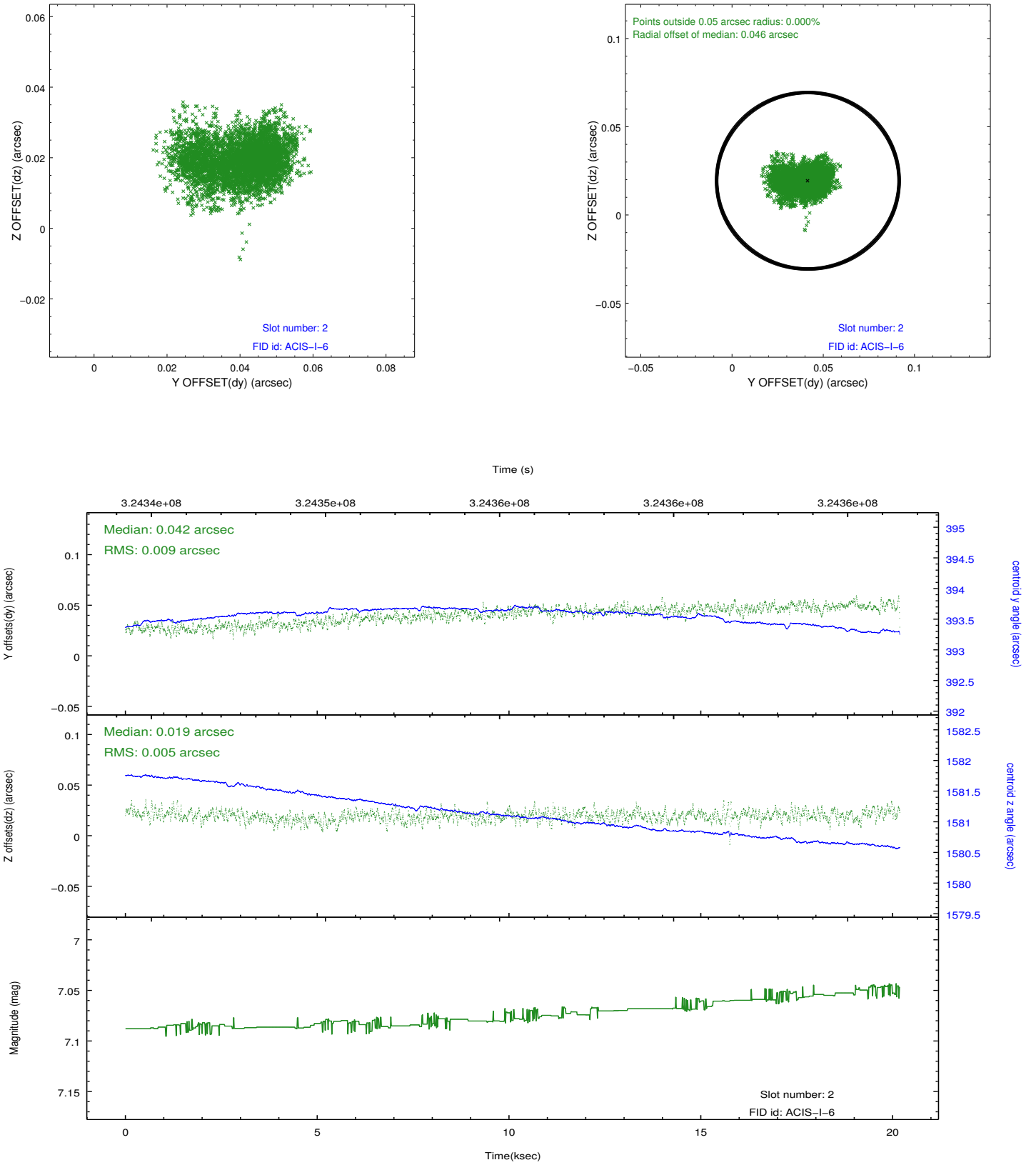
2.5.1 Slot 0



2.5.2 Slot 1



2.5.3 Slot 2



A Summary

A.1 Status

V&V Scientist	Jen Lauer
V&V Date (YYYY-MM-DD)	2012.05.15
V&V Edition	1
V&V Disposition and Status	OK
V&V Charge Time	20.1593001

A.2 Comments