

V&V Reference Report

L2 ASCDS Version : 8.4.4

Observation 9412 - L2 Version 2
Chandra X-Ray Center

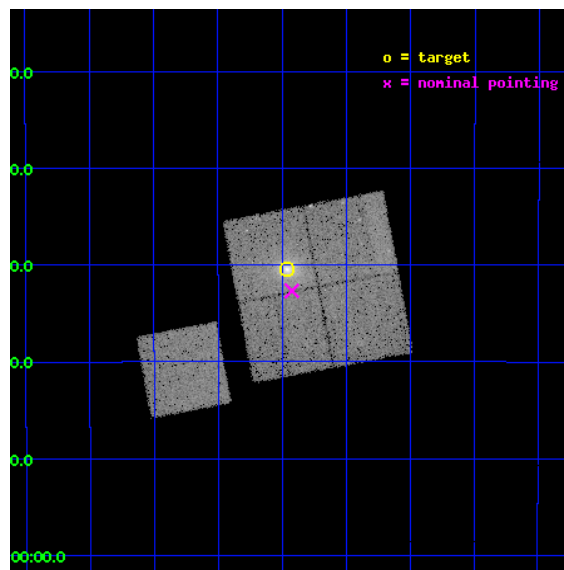
L2 Processing Date : May 10 2012

Contents

1	Front	2
2	OBI	3
2.1	OBI	3
2.1.1	Images	3
2.1.2	Bias	3
2.1.3	Parameters	4
2.1.4	Events	4
2.2	Compared Parameters	5
2.3	Aspect	6
2.4	Star Slots	9
2.4.1	Slot 3	9
2.4.2	Slot 4	10
2.4.3	Slot 5	11
2.4.4	Slot 6	12
2.4.5	Slot 7	13
2.5	FID Slots	14
2.5.1	Slot 0	14
2.5.2	Slot 1	15
2.5.3	Slot 2	16
A	Summary	17
A.1	Status	17
A.2	Comments	17

1 Front

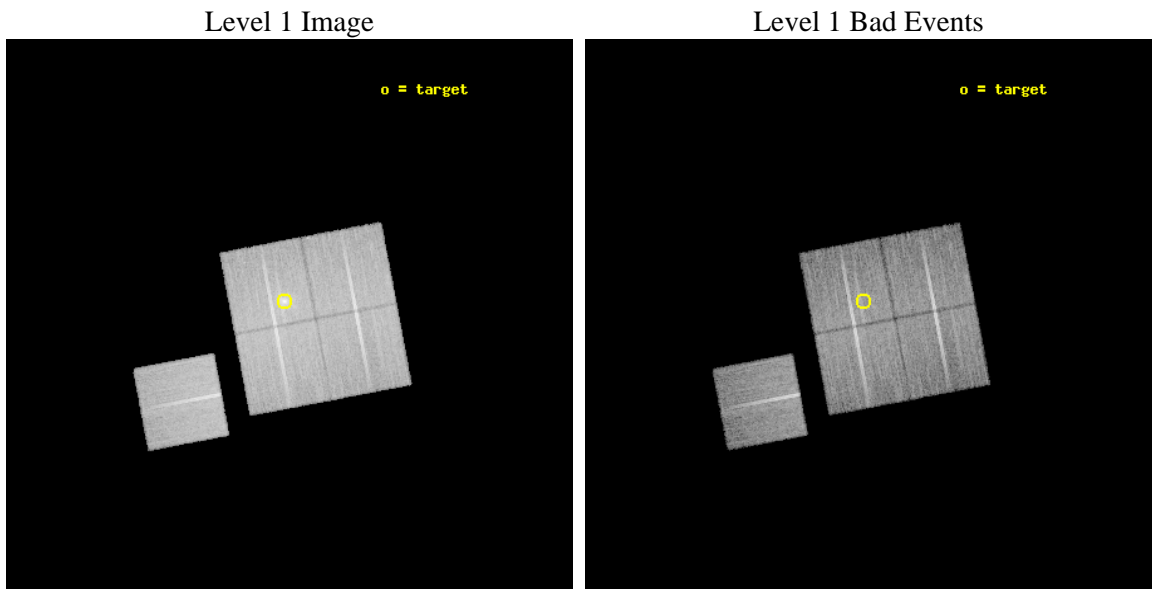
seq_num	800748	Sequence number
obs_id	9412	Observation id
title	LoCuSS: Cluster Mass Comparison with Chandra and HST -- Observational Discrepancy or Agreement in the New Millennium?	Proposal title
observer	Dr Graham Smith	Principal investigator
object	RXCJ0237.4-2630	Source name
dtcycle	0	
cycle	P	events from which exps? Prim/Second/Both
ra_targ	39.365833	Observer's specified target RA [deg]
dec_targ	-26.508083	Observer's specified target Dec [deg]
ra_nom	39.355927409009	Nominal RA [deg]
dec_nom	-26.544749338344	Nominal Dec [deg]
roll_nom	259.26929302689	Nominal Roll [deg]
revision	2	Processing version of data
ontime	18627.900143266	Sum of GTIs [s]
livetime	18384.512914233	Livetime [s]
ontime0	18627.900143266	Sum of GTIs [s]
ontime1	18624.759153068	Sum of GTIs [s]
ontime2	18624.75918293	Sum of GTIs [s]
ontime3	18627.900143266	Sum of GTIs [s]
ontime6	18627.900143266	Sum of GTIs [s]
l2events	91207	Number of level 2 events



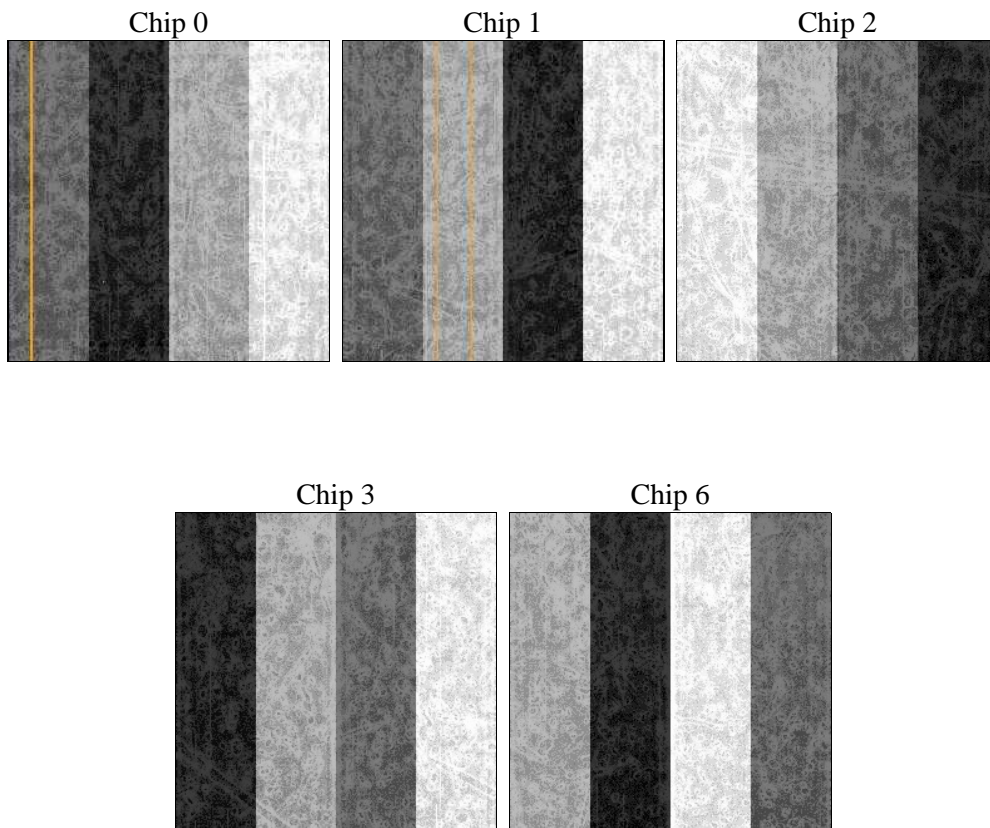
2 OBI

2.1 OBI

2.1.1 Images



2.1.2 Bias



2.1.3 Parameters

obi_num	0	Obi number	sched_exp_time	18468.270000	[s] Scheduled observation exposure time
ascdsver	8.4.4	Processing system revision	ontime	18627.900143266	Sum of GTIs [s]
caldsver	4.4.9	 	ontime0	18627.900143266	Sum of GTIs [s]
date	2012-05-10T22:56:14	Date and time of file creation	ontime1	18624.759153068	Sum of GTIs [s]
revision	2	Processing version of data	ontime2	18624.75918293	Sum of GTIs [s]
			ontime3	18627.900143266	Sum of GTIs [s]
			ontime6	18627.900143266	Sum of GTIs [s]
			l1events	785810	Number of level 1 events

2.1.4 Events

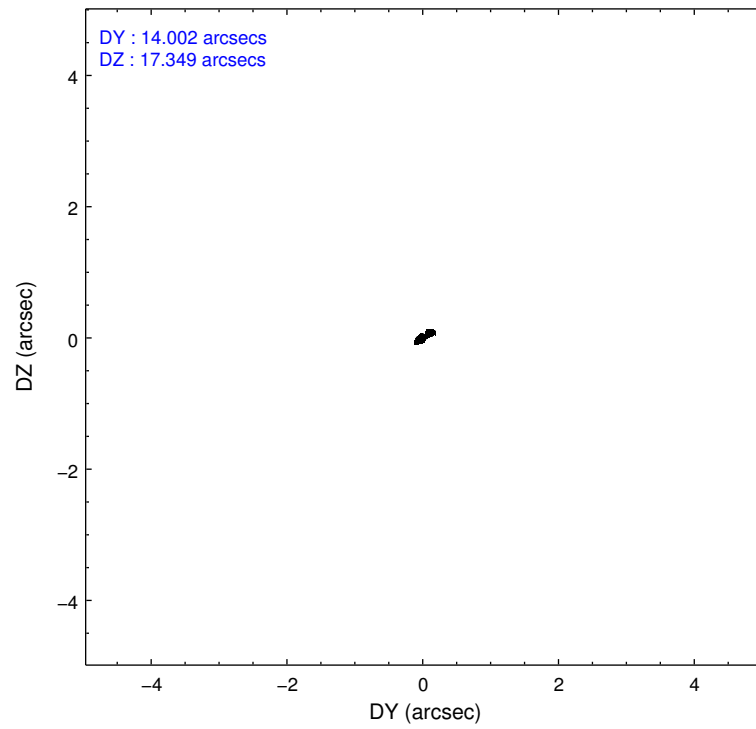
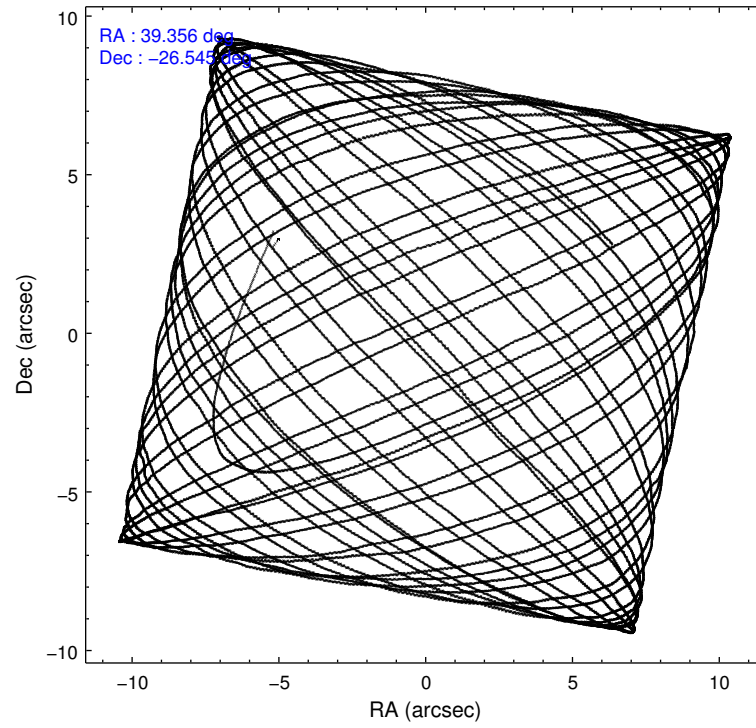
	ccd 0	ccd 1	ccd 2	ccd 3	ccd 6
level 1 events	147716	149011	164484	168787	155812
rejected events	129323	127802	146171	140324	136553
rejected %	87%	85%	88%	83%	87%

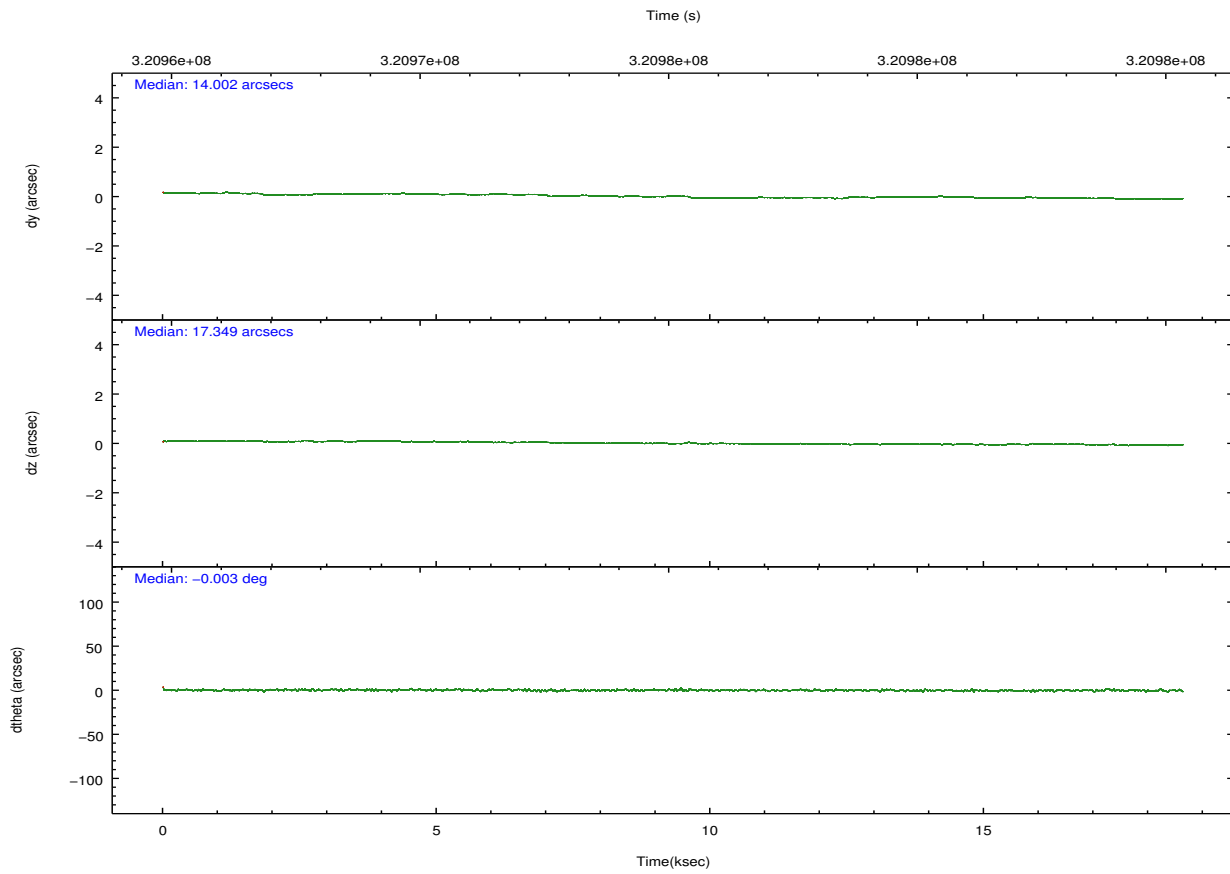
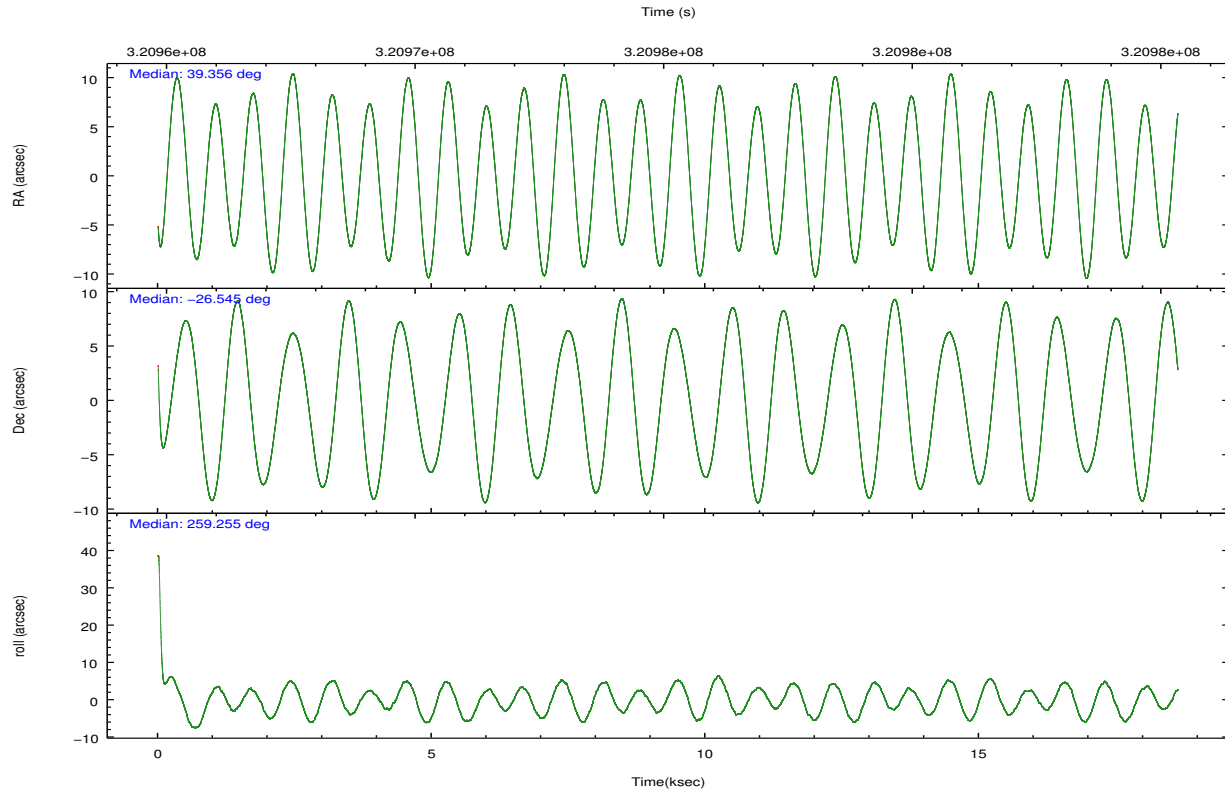
	ccd 0	ccd 1	ccd 2	ccd 3	ccd 6
grade 0 events	7764	9355	8212	16649	8382
	5%	6%	4%	9%	5%
grade 1 events	118	89	117	176	91
	0%	0%	0%	0%	0%
grade 2 events	4135	4480	3967	4717	3899
	2%	3%	2%	2%	2%
grade 3 events	1854	2009	1753	2074	1871
	1%	1%	1%	1%	1%
grade 4 events	1802	1973	1815	2150	1917
	1%	1%	1%	1%	1%
grade 5 events	5397	6059	5251	6522	6304
	3%	4%	3%	3%	4%
grade 6 events	3299	3950	3088	3386	3684
	2%	2%	1%	2%	2%
grade 7 events	123347	121096	140281	133113	129664
	83%	81%	85%	78%	83%

2.2 Compared Parameters

Parameter	Planned	Actual	Parameter	Planned	Actual
Instrument	ACIS	ACIS	Obspar format version number	7	7
Detector	ACIS-01236	ACIS-01236	Obspar file type	PREDICTED	ACTUAL
Grating	NONE	NONE	Obspar update status	NONE	UPDATED
Data mode	VFAINT	VFAINT	Number of optional ACIS chips dropped	0	0
Observation mode	POINTING	POINTING	On-chip summing requested	N	N
[deg] Pointing RA	39.345669	39.35592740900873	Subarray requested	NONE	NONE
[deg] Pointing Dec	-26.518851	-26.5447493383437	Alternating exposures requested	N	N
[deg] Pointing Roll	259.056008	259.2692930268904	[s] Primary exposure time	0.000000	3.1
[mm] SIM focus pos	-0.782348	-0.7809083437167272			
[mm] SIM defocus	0	0.001439871863259334			
[mm] SIM translation stage pos	-227.592463	-227.5933067819097			
[mm] SIM translation stage offset	-6	-5.999146221020027			
[s] Observation start time (MET)	320965939.184000	320964657.70385			
Observation start date	2008-03-03T21:11:14	2008-03-03T20:50:57			
[s] Observation end time (MET)	320984408.184000	320984642.12982			
Observation end date	2008-03-04T02:19:03	2008-03-04T02:24:02			
Read mode	TIMED	TIMED			

2.3 Aspect



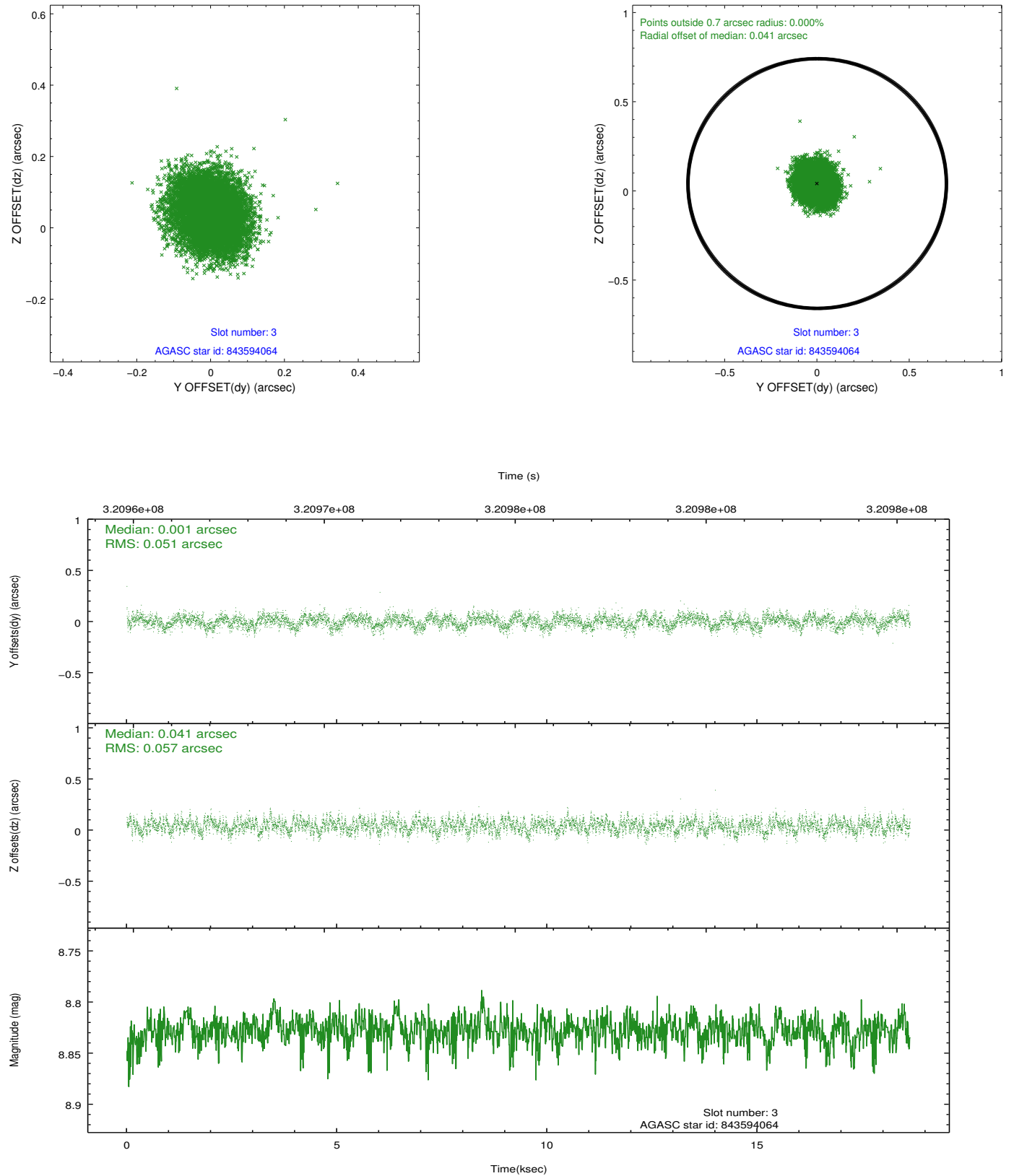


Slot Statistics

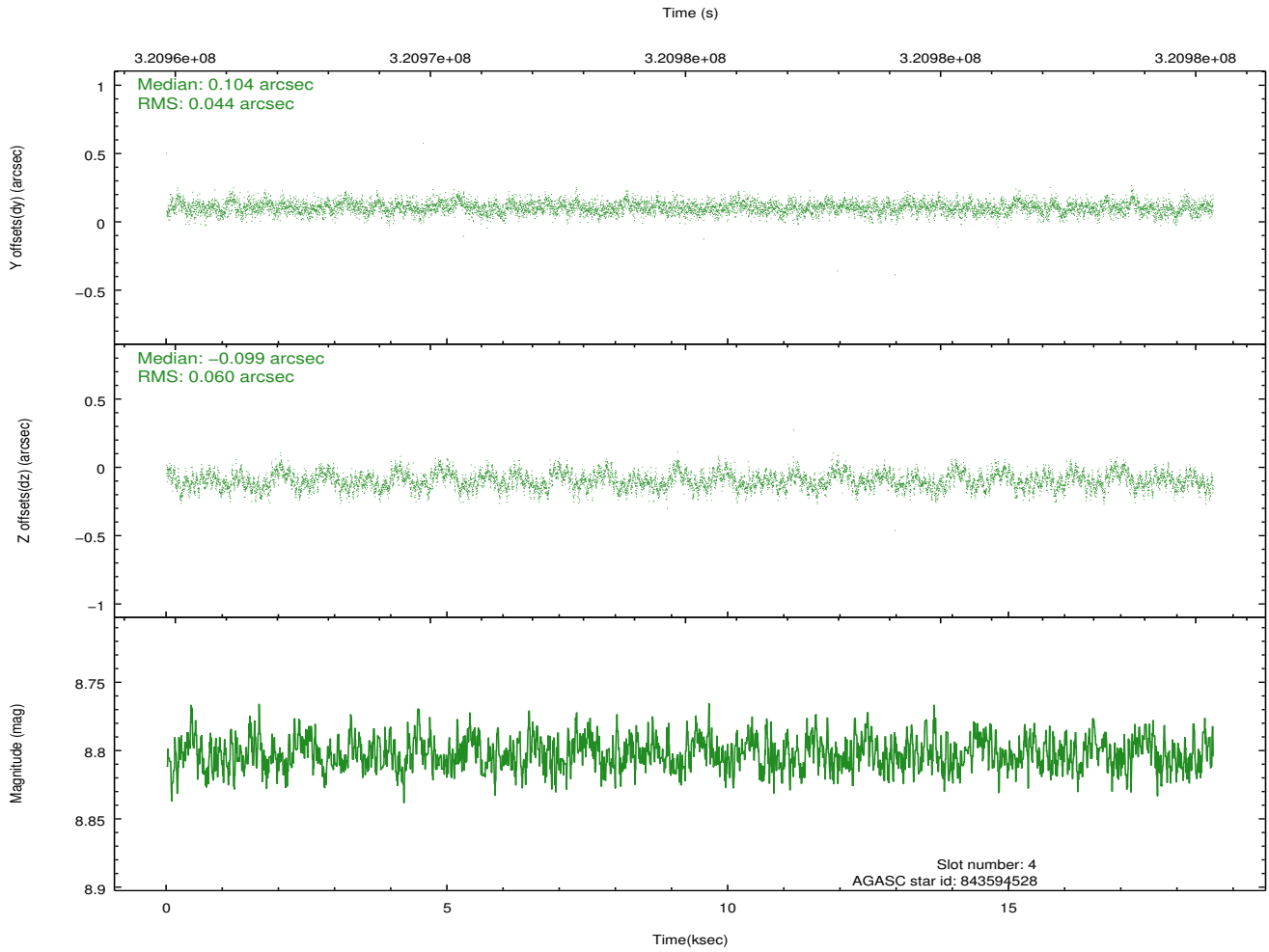
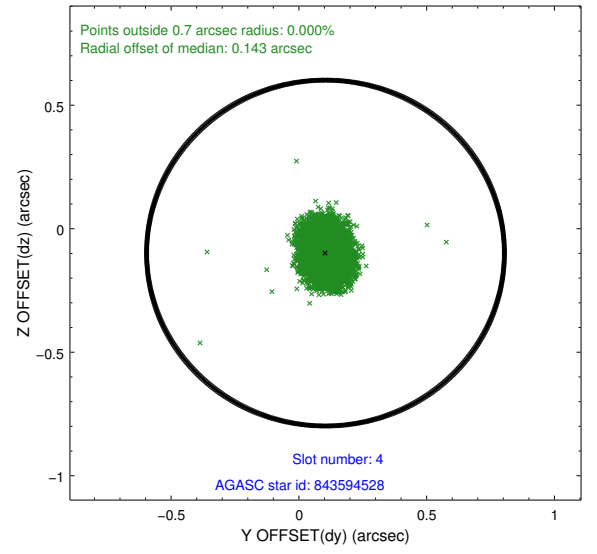
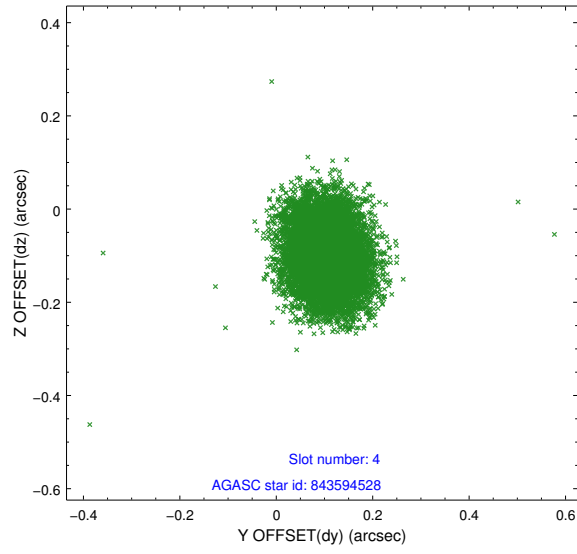
slot	status	id	mag	n_pts	med_dy	med_dz	dr1	dr2	ra	dec	mean_y	mean_z
0	FID	ACIS-I-2	7.15	4545	-0.097	-0.075	0.009	0.015	0.000000	0.000000	-769.22	-969.80
1	FID	ACIS-I-4	7.14	4544	0.149	0.078	0.006	0.011	0.000000	0.000000	2144.95	936.36
2	FID	ACIS-I-5	7.21	4546	-0.153	0.066	0.009	0.015	0.000000	0.000000	-1822.53	933.66
3	GUIDE	843594064	8.83	9086	0.001	0.041	0.082	0.130	39.790299	-26.318724	-975.57	1274.11
4	GUIDE	843594528	8.80	9087	0.104	-0.099	0.079	0.128	38.934365	-26.696850	883.19	-1176.08
5	GUIDE	843594664	8.63	9088	-0.043	0.183	0.067	0.110	38.755794	-26.761962	1224.44	-1694.06
6	GUIDE	843595552	8.89	9078	0.036	-0.060	0.082	0.132	39.973733	-26.320813	-1079.70	1855.15
7	GUIDE	843595984	9.50	9082	-0.093	-0.062	0.121	0.196	38.977187	-26.579669	442.44	-1122.31

2.4 Star Slots

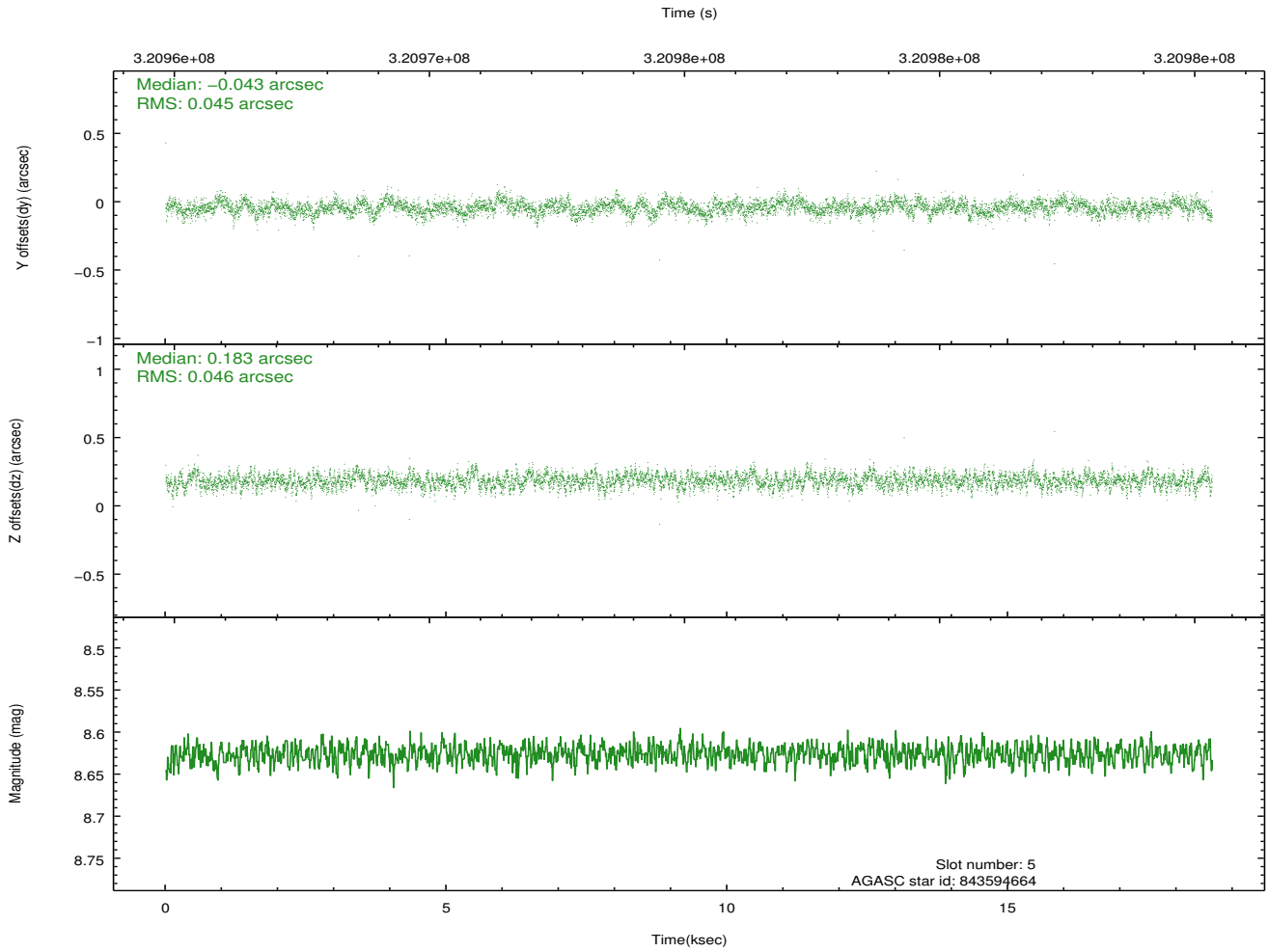
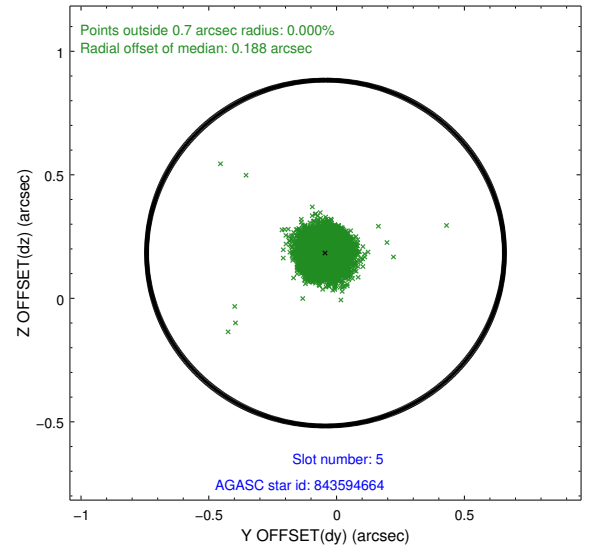
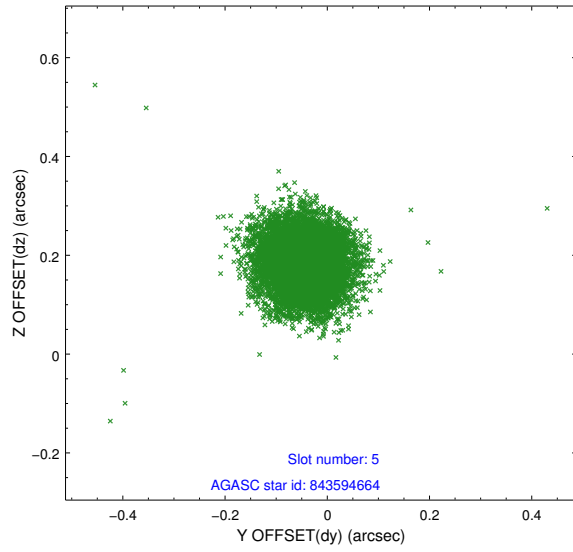
2.4.1 Slot 3



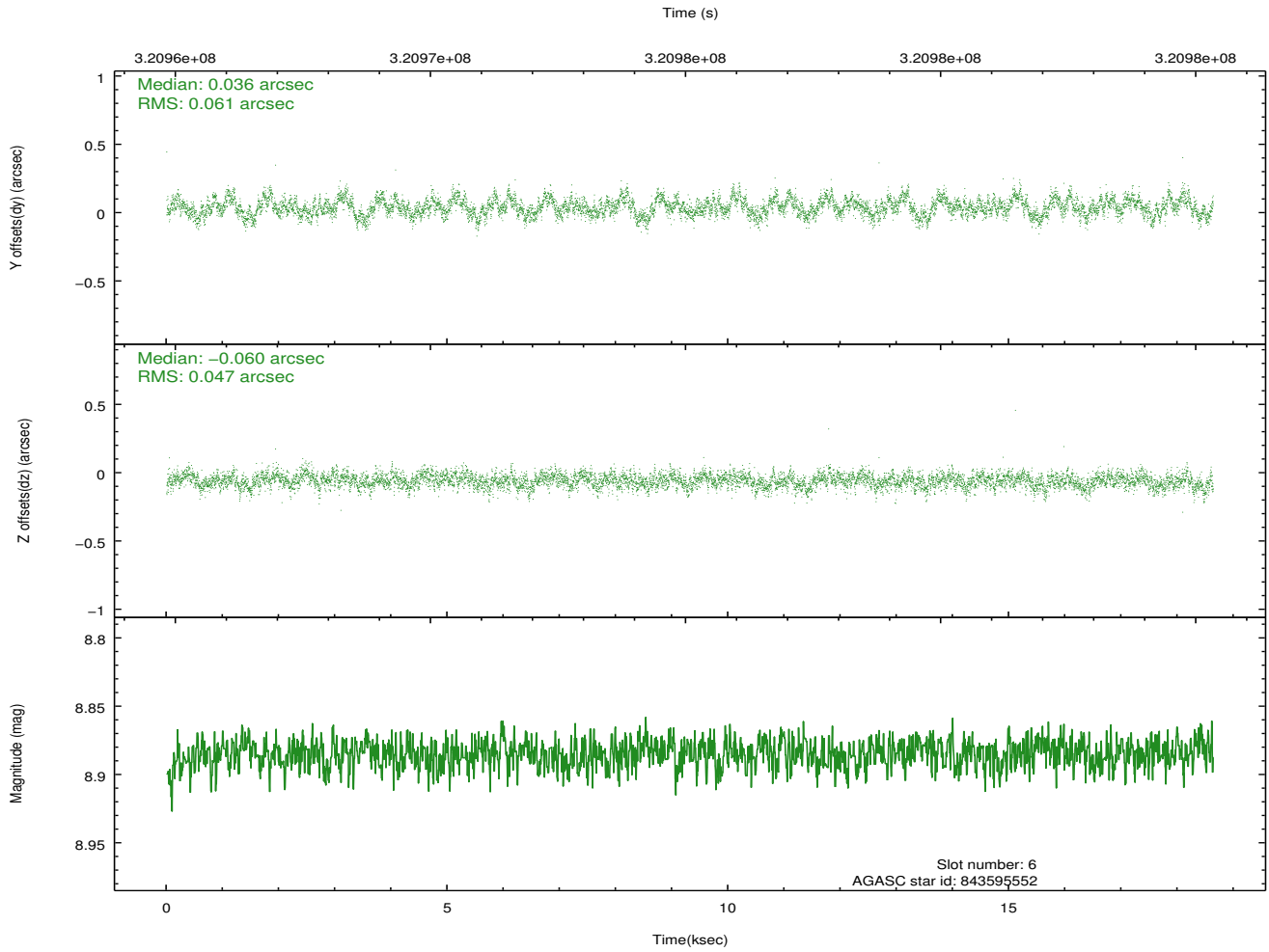
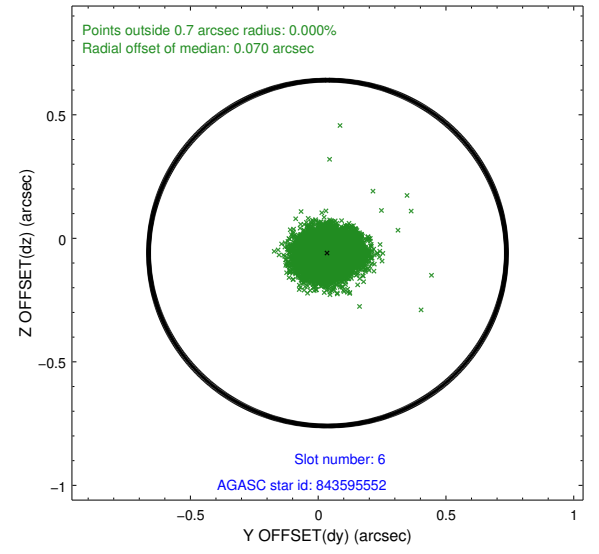
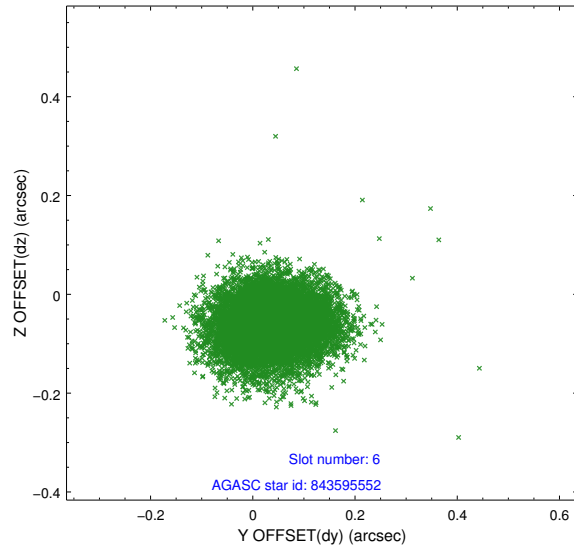
2.4.2 Slot 4



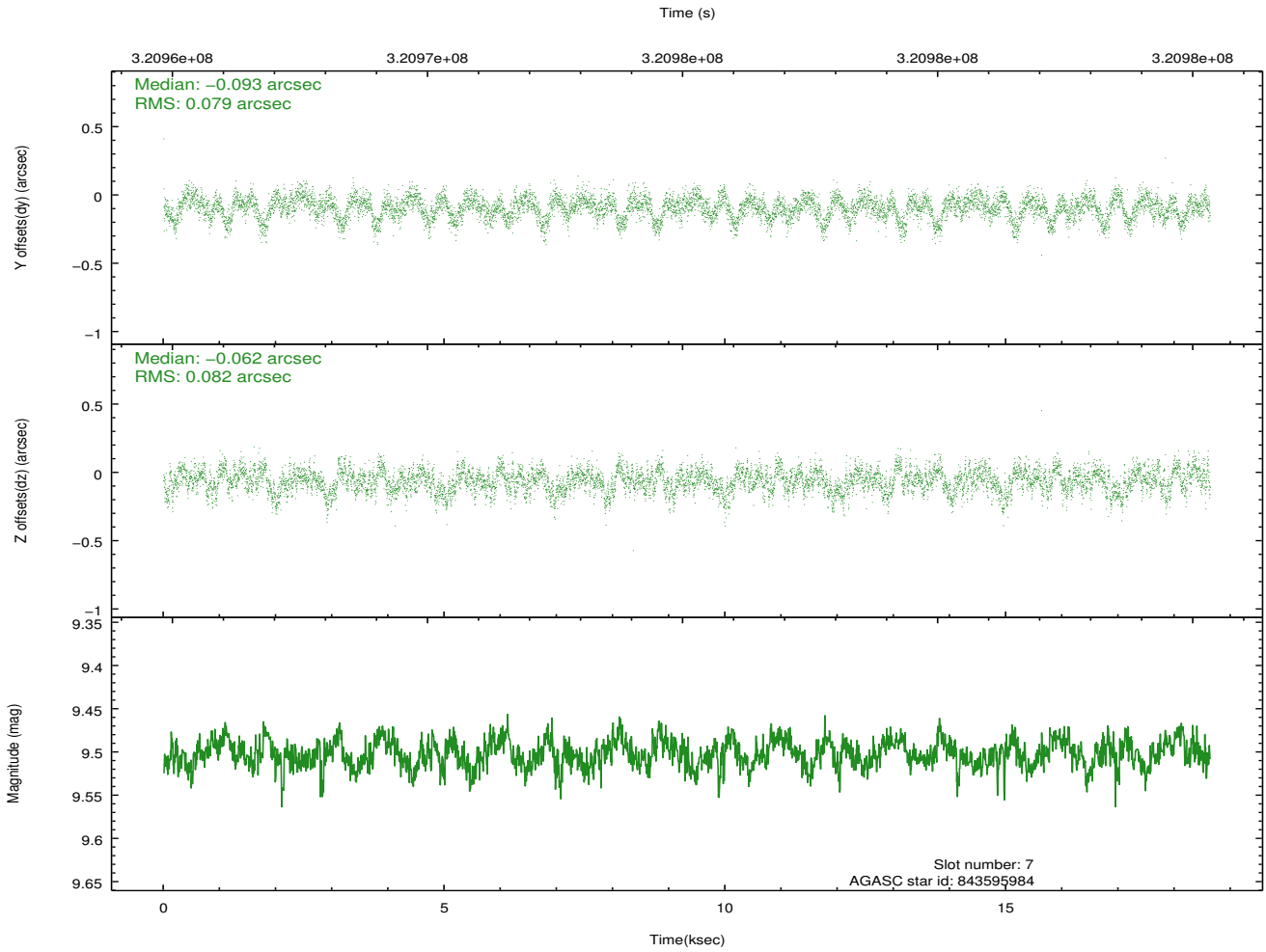
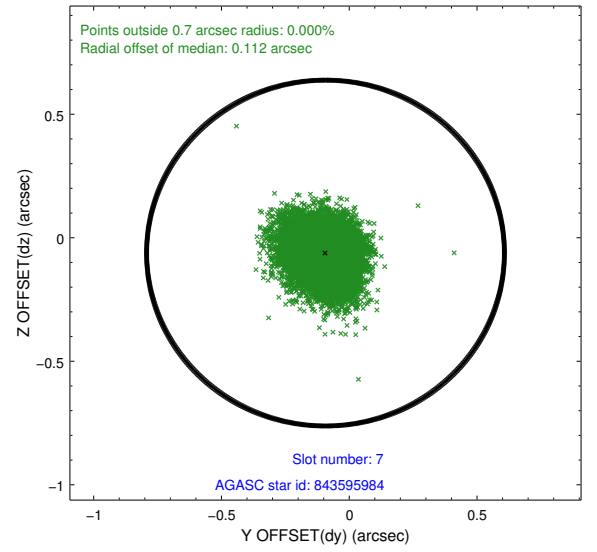
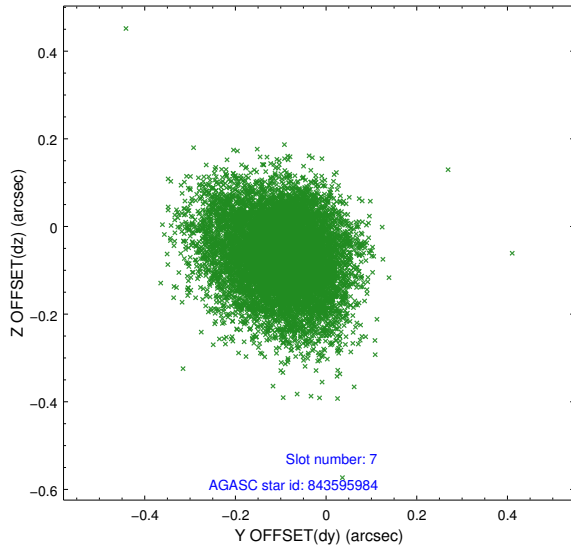
2.4.3 Slot 5



2.4.4 Slot 6

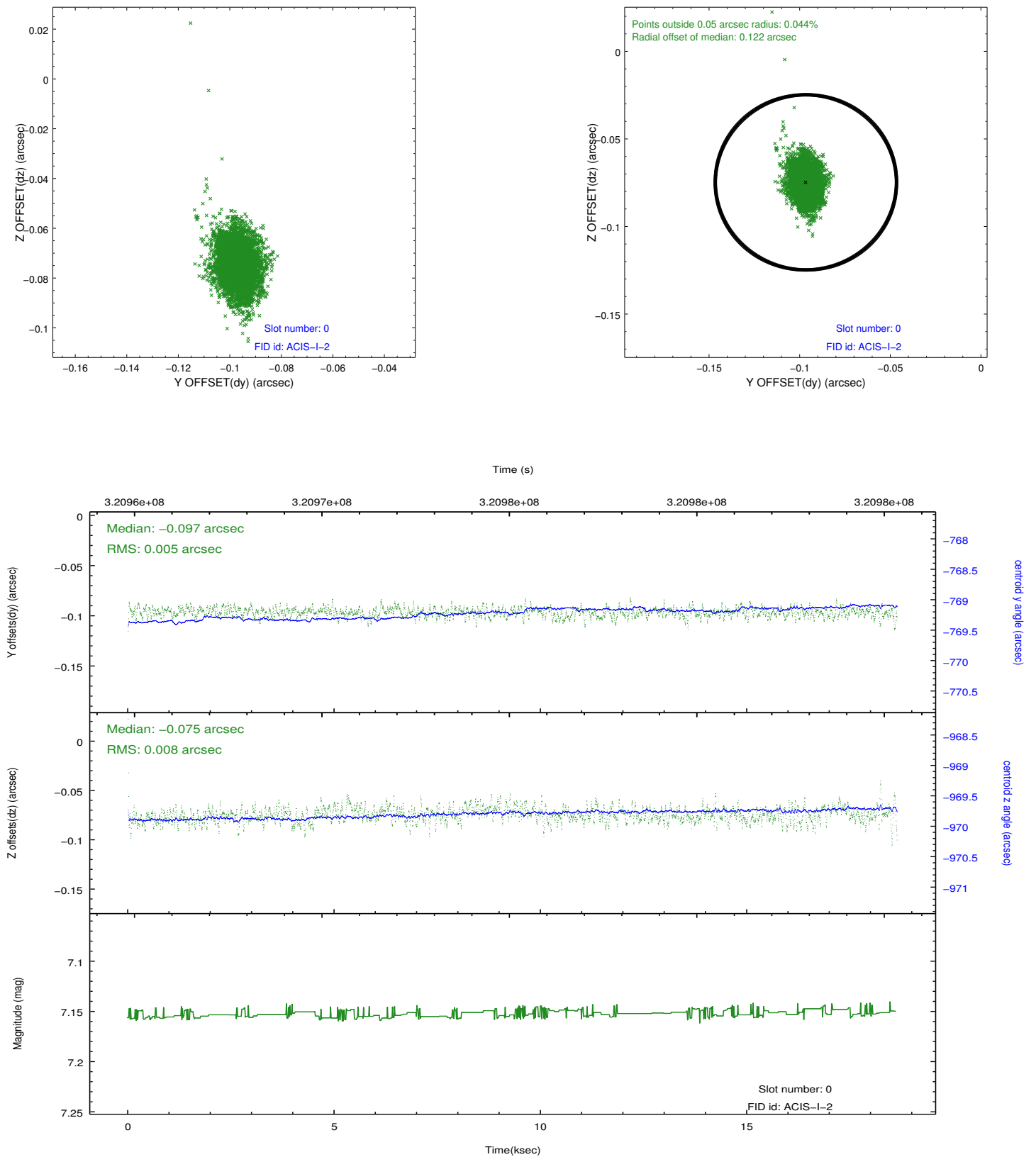


2.4.5 Slot 7

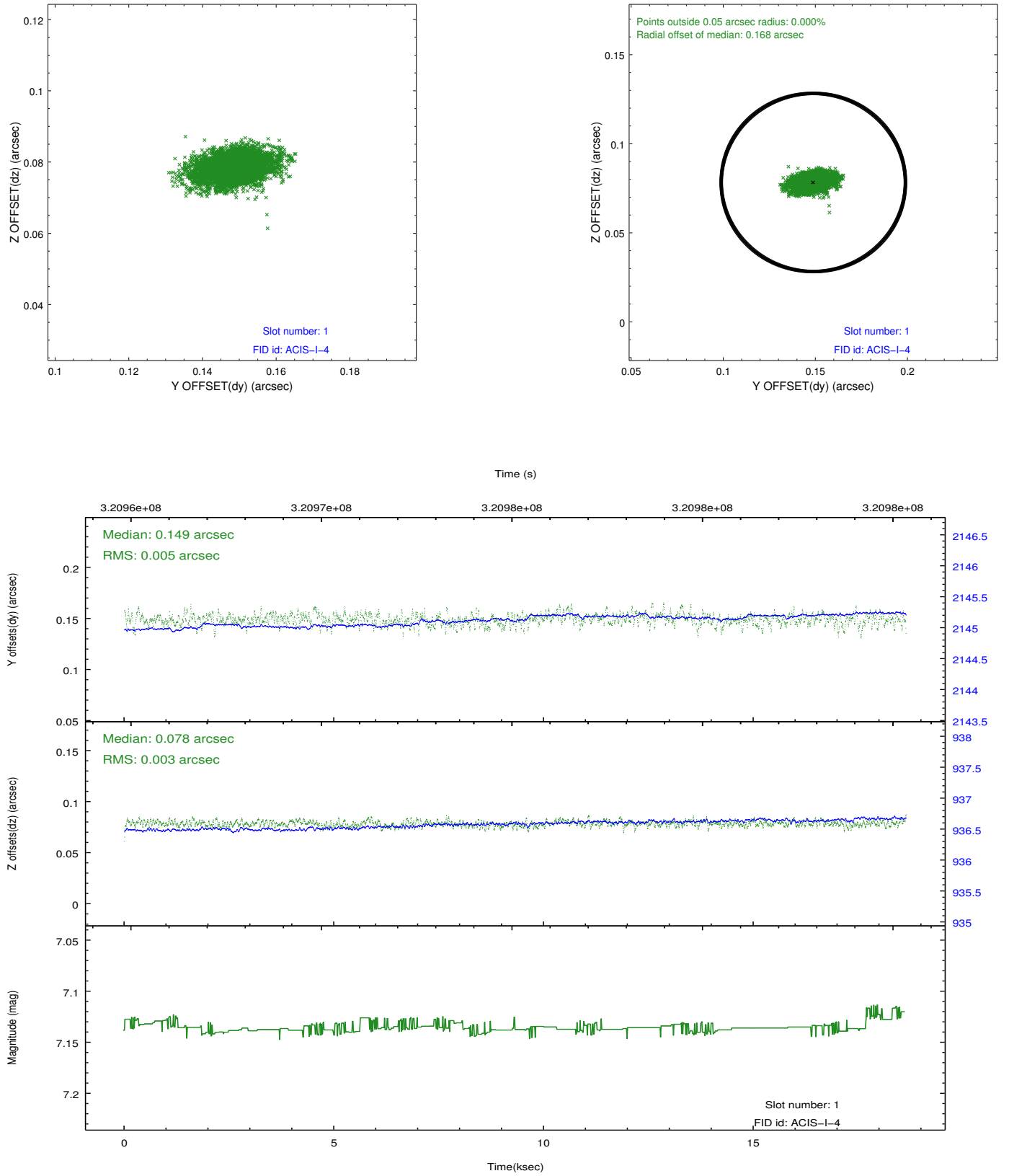


2.5 FID Slots

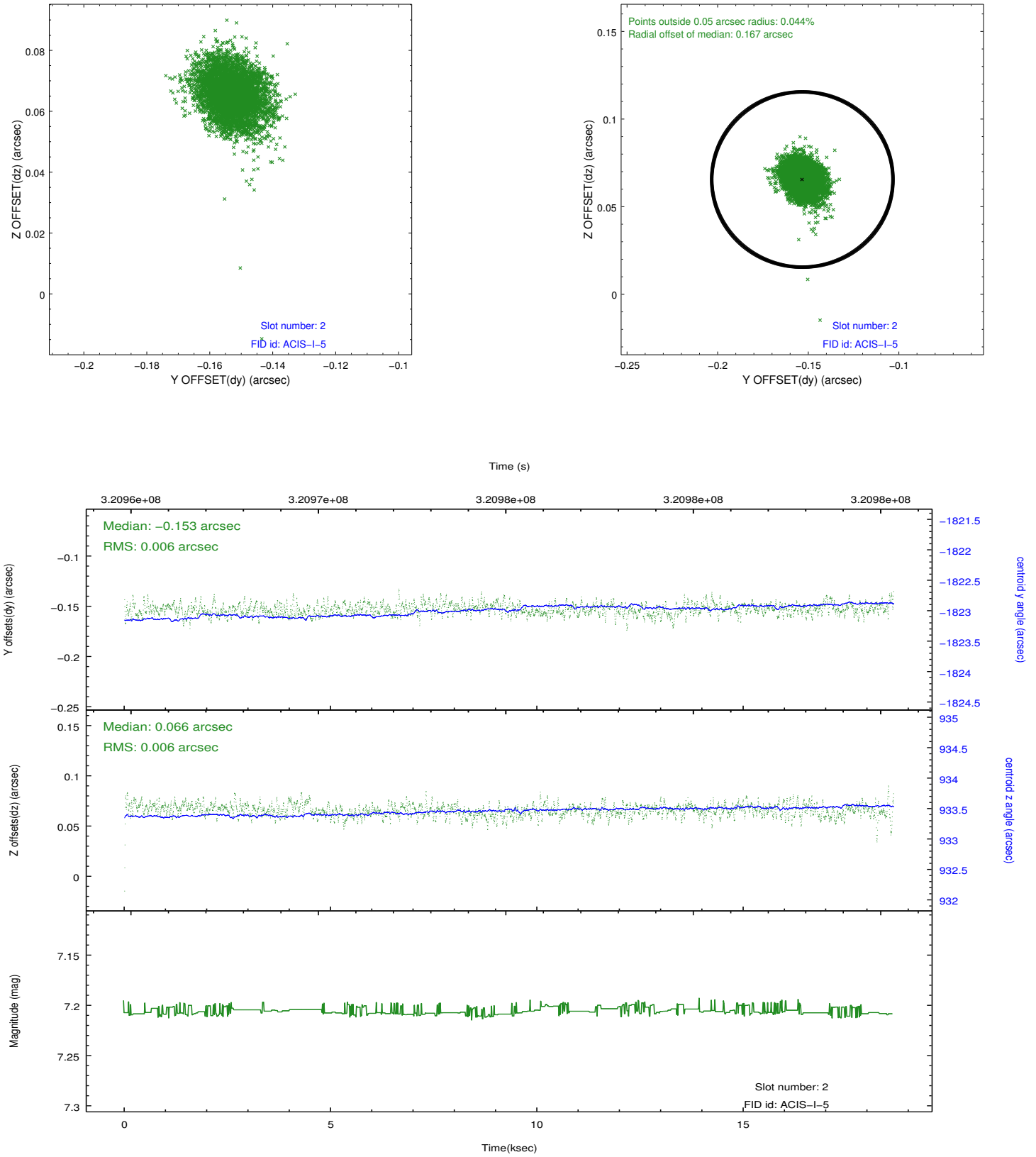
2.5.1 Slot 0



2.5.2 Slot 1



2.5.3 Slot 2



A Summary

A.1 Status

V&V Scientist	Beth Sundheim
V&V Date (YYYY-MM-DD)	2012.05.14
V&V Edition	1
V&V Disposition and Status	OK
V&V Charge Time	18.6279001

A.2 Comments