

V&V Reference Report

L2 ASCDS Version : 8.4.4

Observation 9410 - L2 Version 2
Chandra X-Ray Center

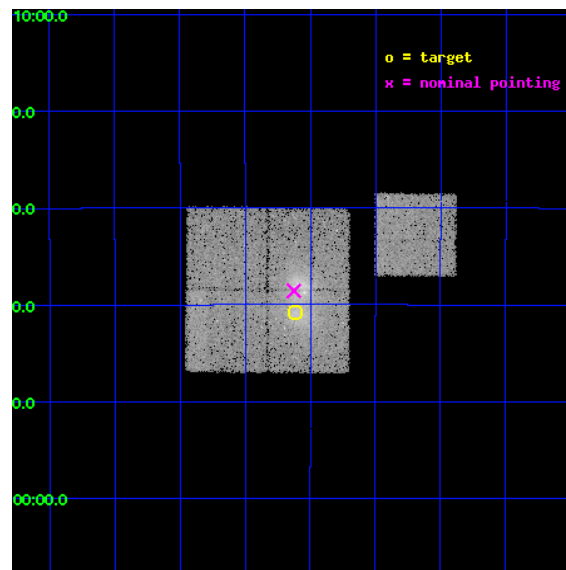
L2 Processing Date : May 20 2012

Contents

1	Front	2
2	OBI	3
2.1	OBI	3
2.1.1	Images	3
2.1.2	Bias	3
2.1.3	Parameters	4
2.1.4	Events	4
2.2	Compared Parameters	5
2.3	Aspect	6
2.4	Star Slots	9
2.4.1	Slot 3	9
2.4.2	Slot 4	10
2.4.3	Slot 5	11
2.4.4	Slot 6	12
2.4.5	Slot 7	13
2.5	FID Slots	14
2.5.1	Slot 0	14
2.5.2	Slot 1	15
2.5.3	Slot 2	16
A	Summary	17
A.1	Status	17
A.2	Comments	17

1 Front

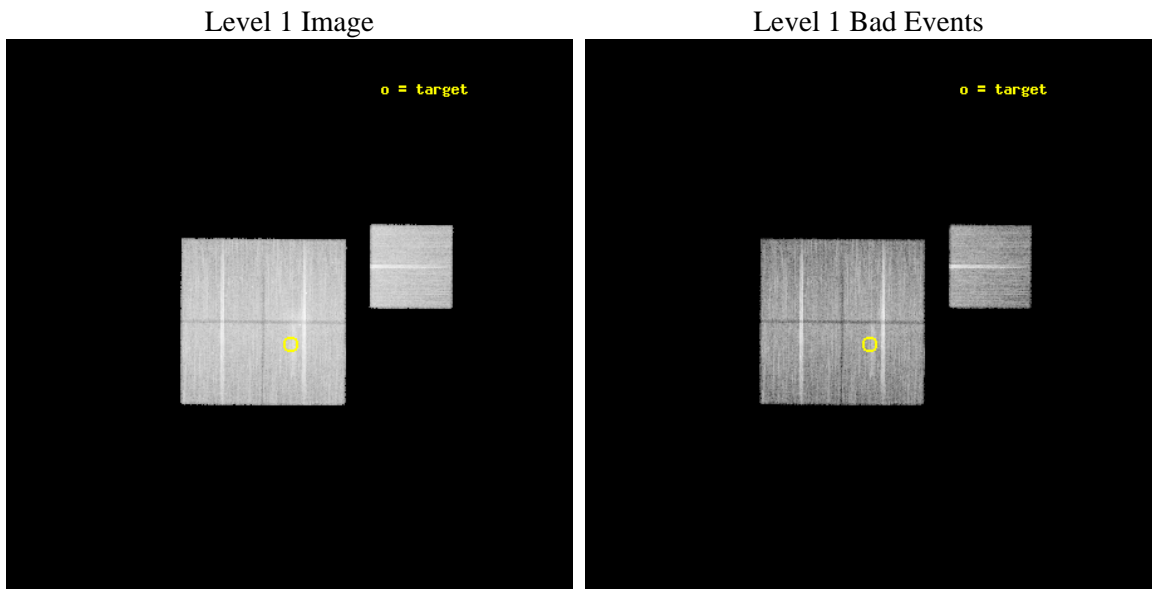
seq_num	800746	Sequence number
obs_id	9410	Observation id
title	LoCuSS: Cluster Mass Comparison with Chandra and HST -- Observational Discrepancy or Agreement in the New Millennium?	Proposal title
observer	Dr Graham Smith	Principal investigator
object	RXCJ0105.5-2439	Source name
dtcycle	0	
cycle	P	events from which exps? Prim/Second/Both
ra_targ	16.404708	Observer's specified target RA [deg]
dec_targ	-24.680472	Observer's specified target Dec [deg]
ra_nom	16.406429040116	Nominal RA [deg]
dec_nom	-24.642768495914	Nominal Dec [deg]
roll_nom	90.444272056091	Nominal Roll [deg]
revision	2	Processing version of data
ontime	20171.659164846	Sum of GTIs [s]
livetime	19908.101587698	Livetime [s]
ontime0	20171.659164786	Sum of GTIs [s]
ontime1	20171.659144938	Sum of GTIs [s]
ontime2	20168.518134713	Sum of GTIs [s]
ontime3	20171.659164846	Sum of GTIs [s]
ontime6	20174.800155163	Sum of GTIs [s]
l2events	80420	Number of level 2 events



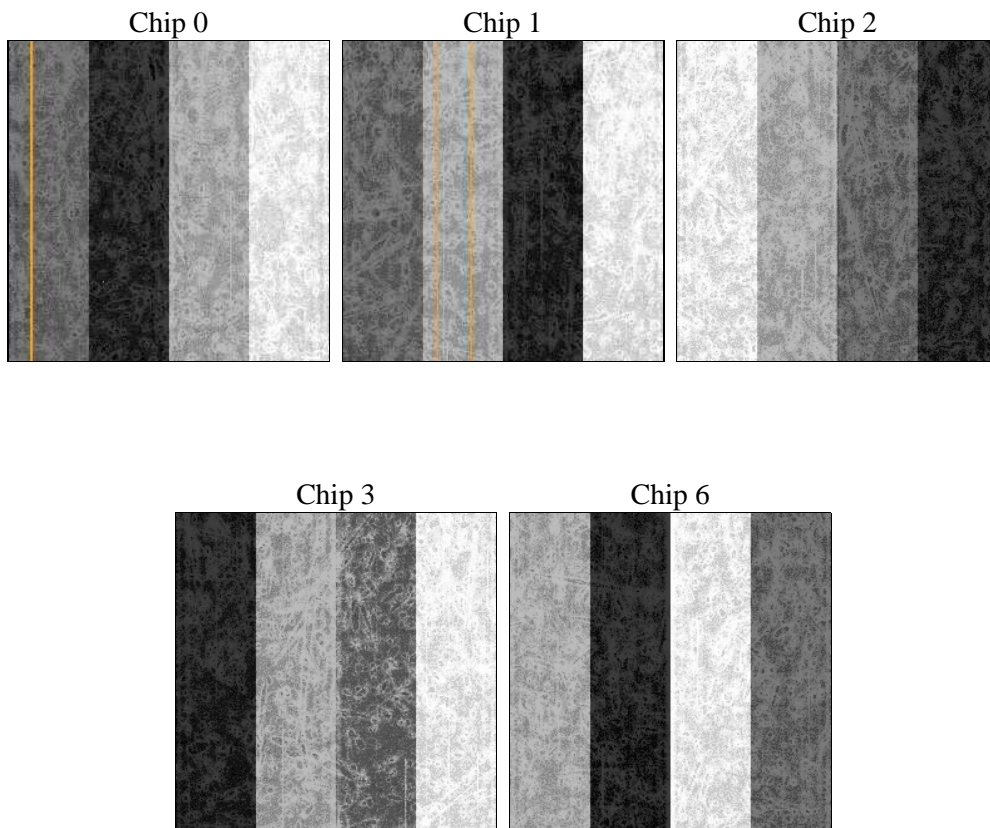
2 OBI

2.1 OBI

2.1.1 Images



2.1.2 Bias



2.1.3 Parameters

obi_num	0	Obi number	sched_exp_time	20000.000000	[s] Scheduled observation exposure time
ascdsver	8.4.4	Processing system revision	ontime	20171.659164846	Sum of GTIs [s]
caldsver	4.4.9	 	ontime0	20171.659164786	Sum of GTIs [s]
date	2012-05-20T07:39:09	Date and time of file creation	ontime1	20171.659144938	Sum of GTIs [s]
revision	2	Processing version of data	ontime2	20168.518134713	Sum of GTIs [s]
			ontime3	20171.659164846	Sum of GTIs [s]
			ontime6	20174.800155163	Sum of GTIs [s]
			l1events	843407	Number of level 1 events

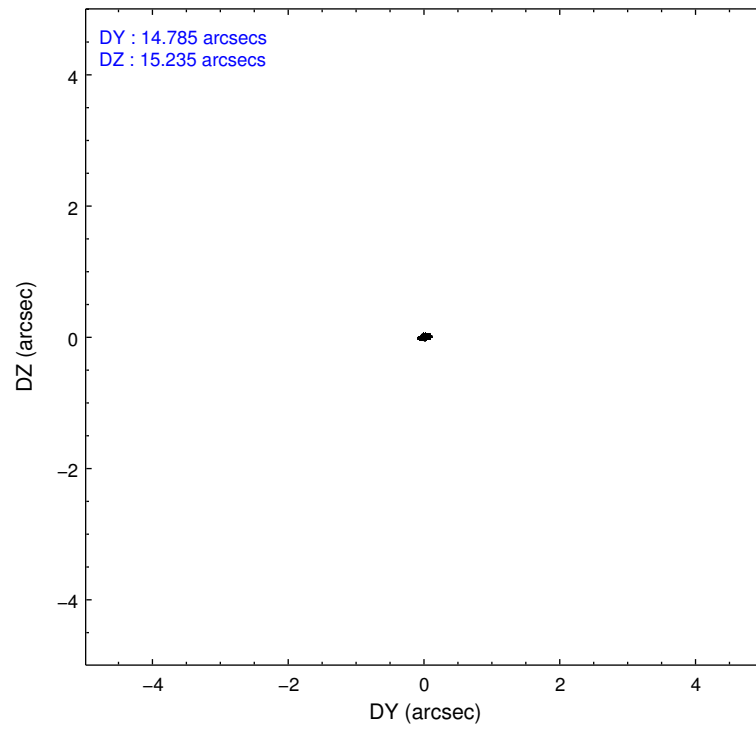
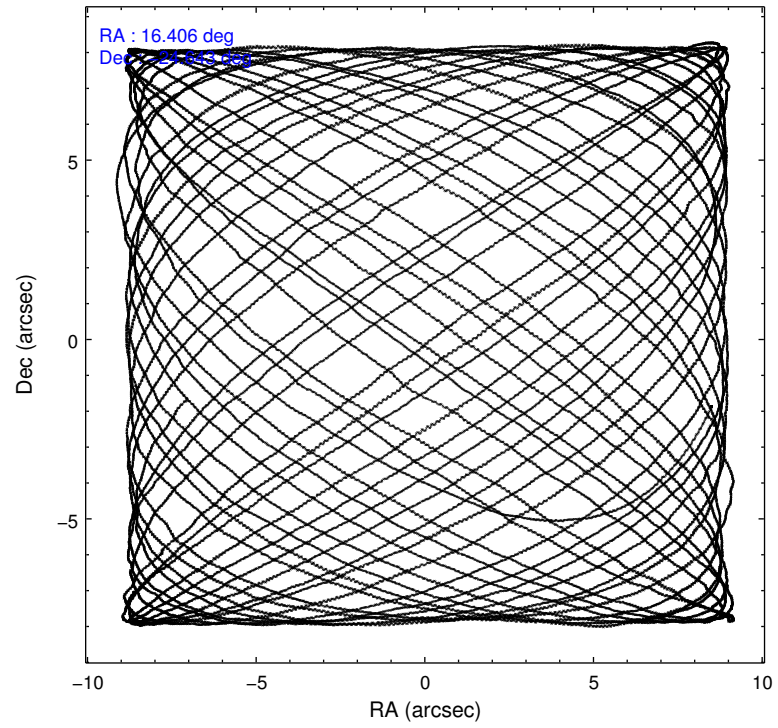
2.1.4 Events

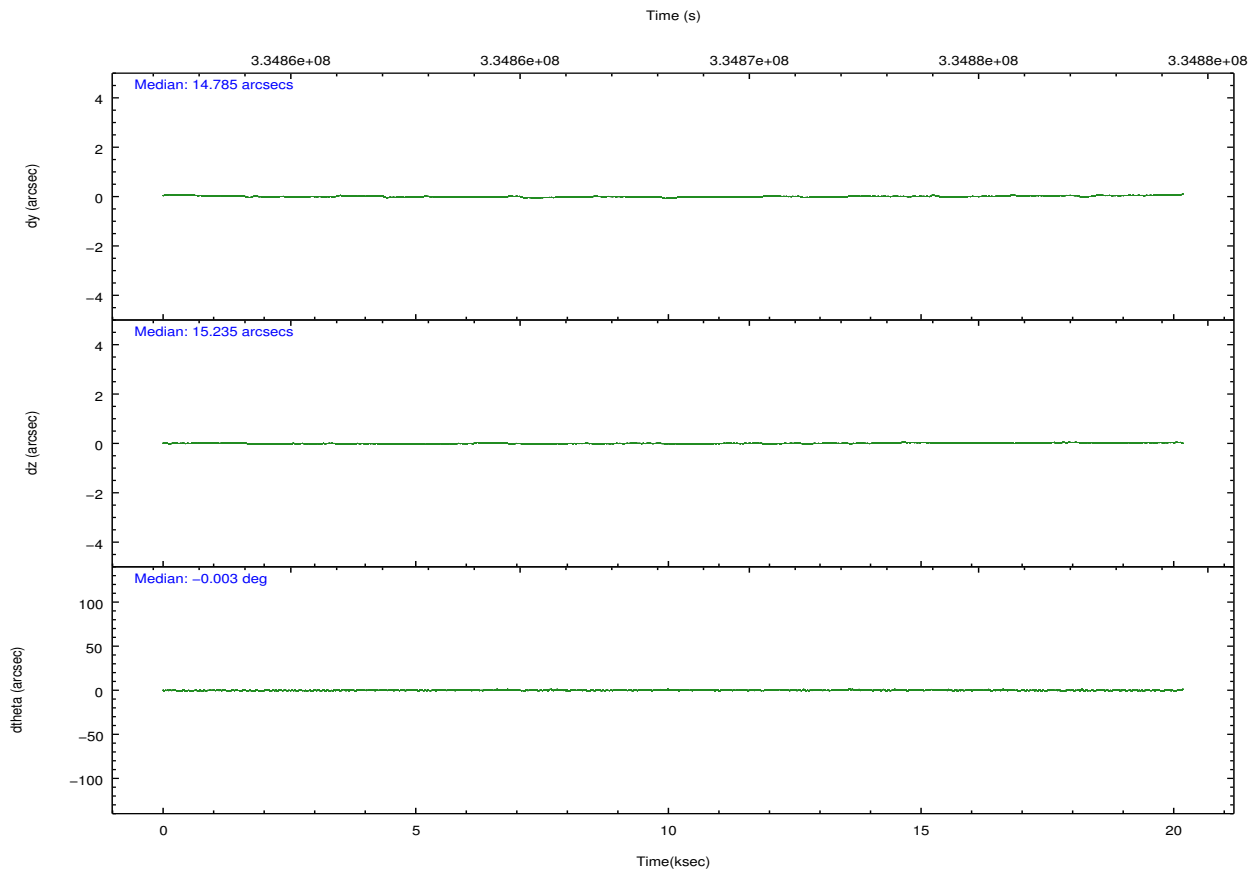
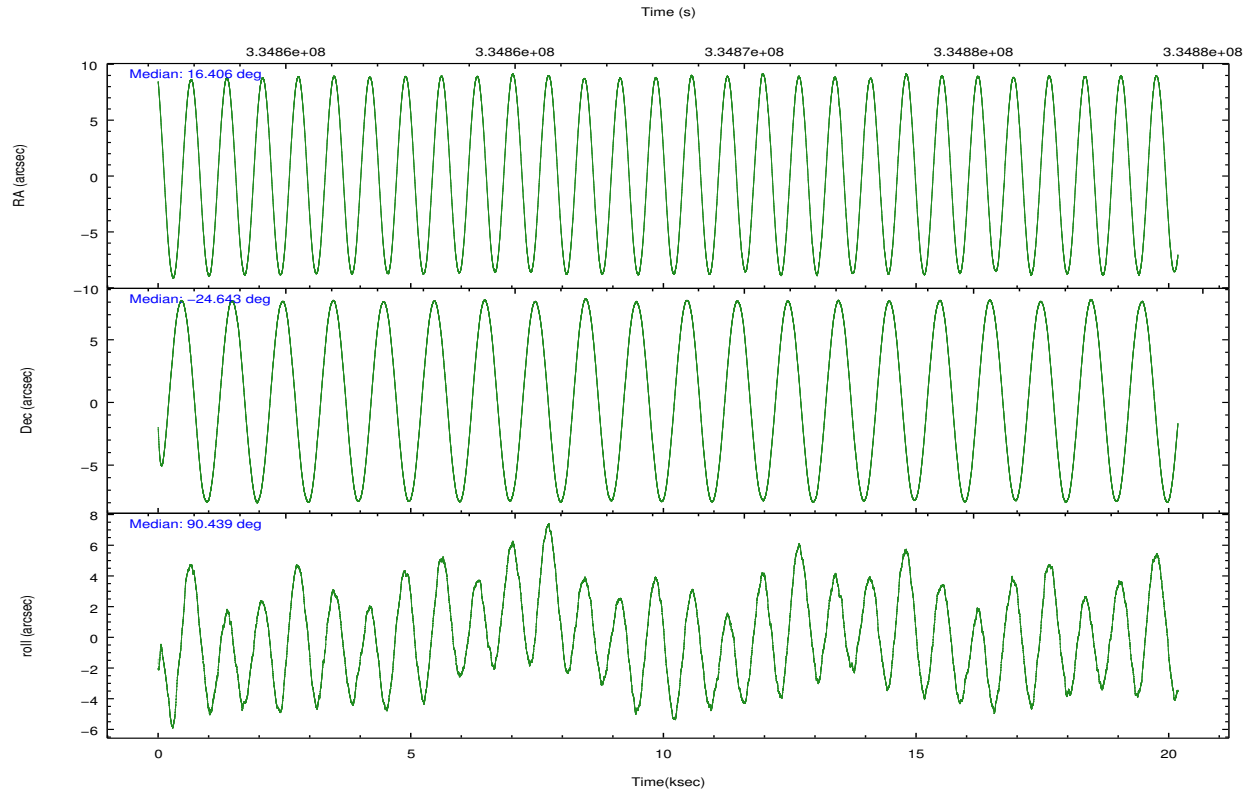
	ccd 0	ccd 1	ccd 2	ccd 3	ccd 6		ccd 0	ccd 1	ccd 2	ccd 3	ccd 6
level 1 events	157844	161707	182168	172556	169132	grade 0 events	6235	7103	10058	11690	6055
rejected events	141158	143164	161315	149939	152383		3%	4%	5%	6%	3%
rejected %	89%	88%	88%	86%	90%	grade 1 events	101	93	132	154	68
							0%	0%	0%	0%	0%
						grade 2 events	4322	4345	4561	4185	3856
							2%	2%	2%	2%	2%
						grade 3 events	1913	2137	1934	2029	1970
							1%	1%	1%	1%	1%
						grade 4 events	1798	2044	1952	2010	1888
							1%	1%	1%	1%	1%
						grade 5 events	6025	6899	5648	7070	6978
							3%	4%	3%	4%	4%
						grade 6 events	3270	3898	3238	3501	3876
							2%	2%	1%	2%	2%
						grade 7 events	134180	135188	154645	141917	144441
							85%	83%	84%	82%	85%

2.2 Compared Parameters

Parameter	Planned	Actual	Parameter	Planned	Actual
Instrument	ACIS	ACIS	Obspar format version number	7	7
Detector	ACIS-01236	ACIS-01236	Obspar file type	PREDICTED	ACTUAL
Grating	NONE	NONE	Obspar update status	NONE	UPDATED
Data mode	VFAINT	VFAINT	Number of optional ACIS chips dropped	0	0
Observation mode	POINTING	POINTING	On-chip summing requested	N	N
[deg] Pointing RA	16.421878	16.40642904011577	Subarray requested	NONE	NONE
[deg] Pointing Dec	-24.666405	-24.64276849591351	Alternating exposures requested	N	N
[deg] Pointing Roll	90.242034	90.44427205609087	[s] Primary exposure time	0.000000	3.1
[mm] SIM focus pos	-0.782348	-0.7809083437167272			
[mm] SIM defocus	0	0.001439871863259334			
[mm] SIM translation stage pos	-227.592463	-227.5933067819097			
[mm] SIM translation stage offset	-6	-5.999146221020027			
[s] Observation start time (MET)	334858422.184000	334856903.63188			
Observation start date	2008-08-11T16:12:37	2008-08-11T15:48:23			
[s] Observation end time (MET)	334878422.184000	334879100.52047			
Observation end date	2008-08-11T21:45:57	2008-08-11T21:58:20			
Read mode	TIMED	TIMED			

2.3 Aspect



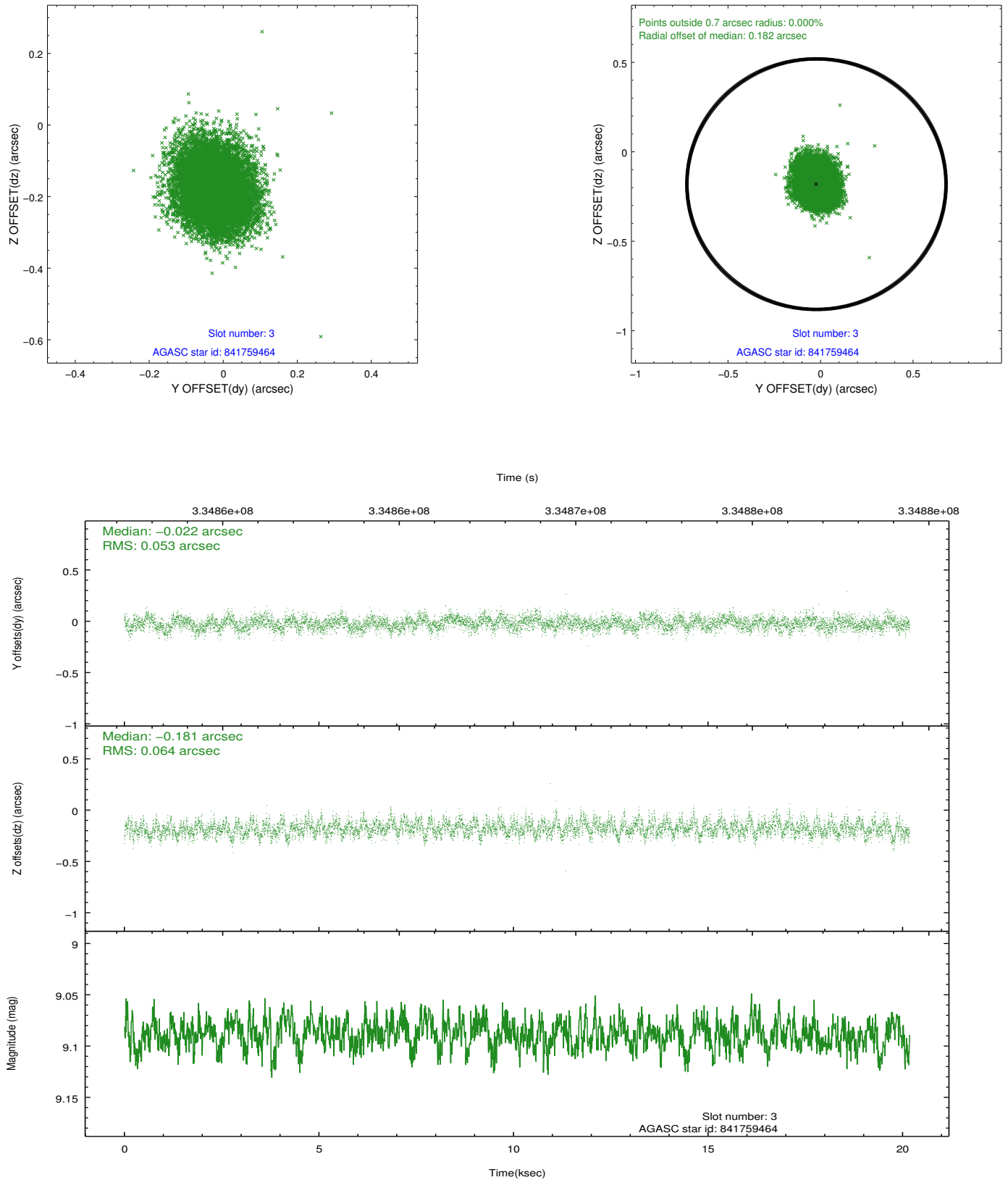


Slot Statistics

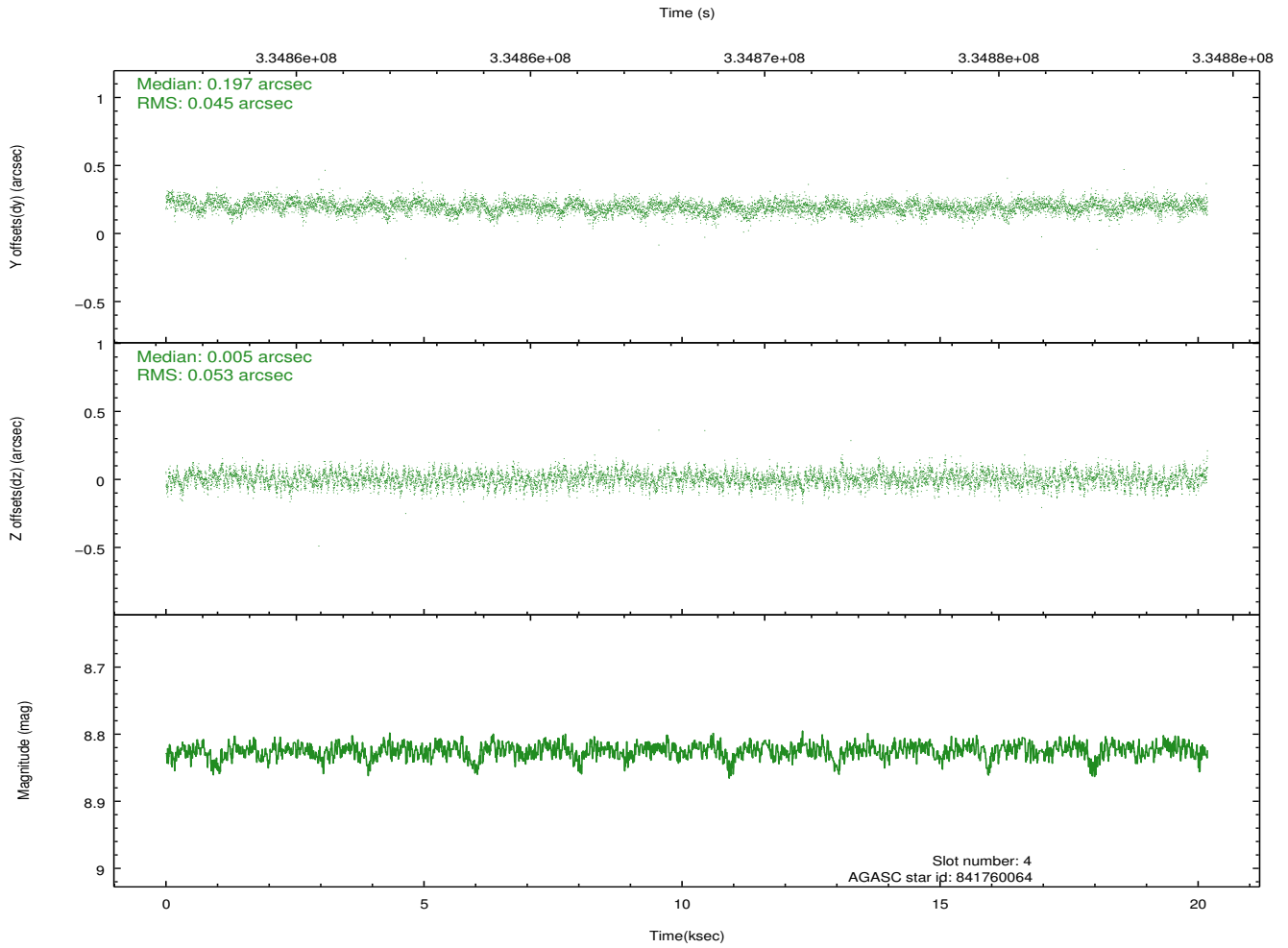
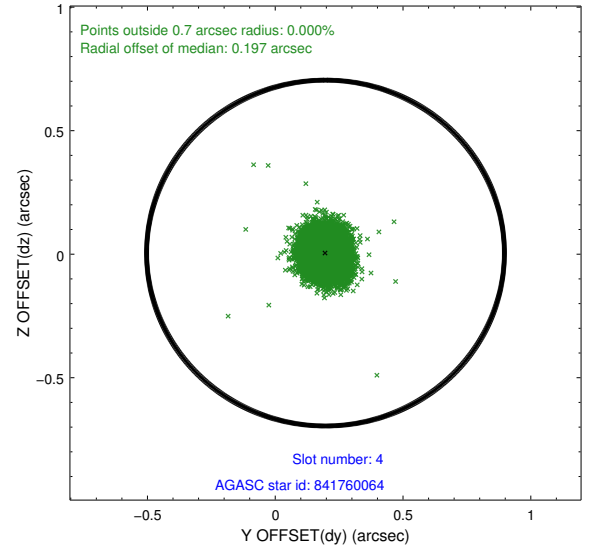
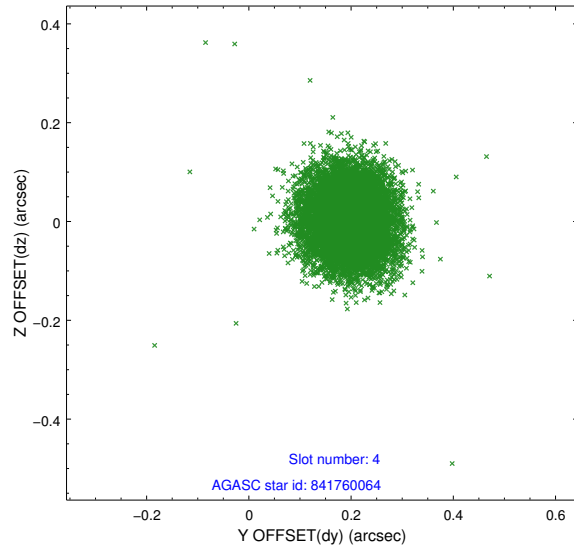
slot	status	id	mag	n_pts	med_dy	med_dz	dr1	dr2	ra	dec	mean_y	mean_z
0	FID	ACIS-I-1	7.06	4923	0.065	-0.006	0.010	0.020	0.000000	0.000000	924.65	-961.96
1	FID	ACIS-I-5	7.05	4923	-0.262	0.060	0.008	0.016	0.000000	0.000000	-1823.72	935.42
2	FID	ACIS-I-6	7.07	4921	0.105	0.016	0.008	0.014	0.000000	0.000000	389.98	1580.14
3	GUIDE	841759464	9.09	9834	-0.022	-0.181	0.088	0.143	16.079202	-24.274041	1415.87	1118.47
4	GUIDE	841760064	8.82	9839	0.197	0.005	0.073	0.117	16.663495	-25.135528	-1692.06	-780.22
5	GUIDE	842141936	8.35	9838	-0.024	0.114	0.075	0.123	17.118817	-24.236925	1532.02	-2295.22
6	GUIDE	842146560	7.27	9845	-0.031	0.001	0.063	0.098	16.796730	-24.855110	-685.56	-1221.73
7	GUIDE	842157400	6.76	9844	-0.124	0.060	0.058	0.095	16.803843	-23.996335	2405.25	-1266.78

2.4 Star Slots

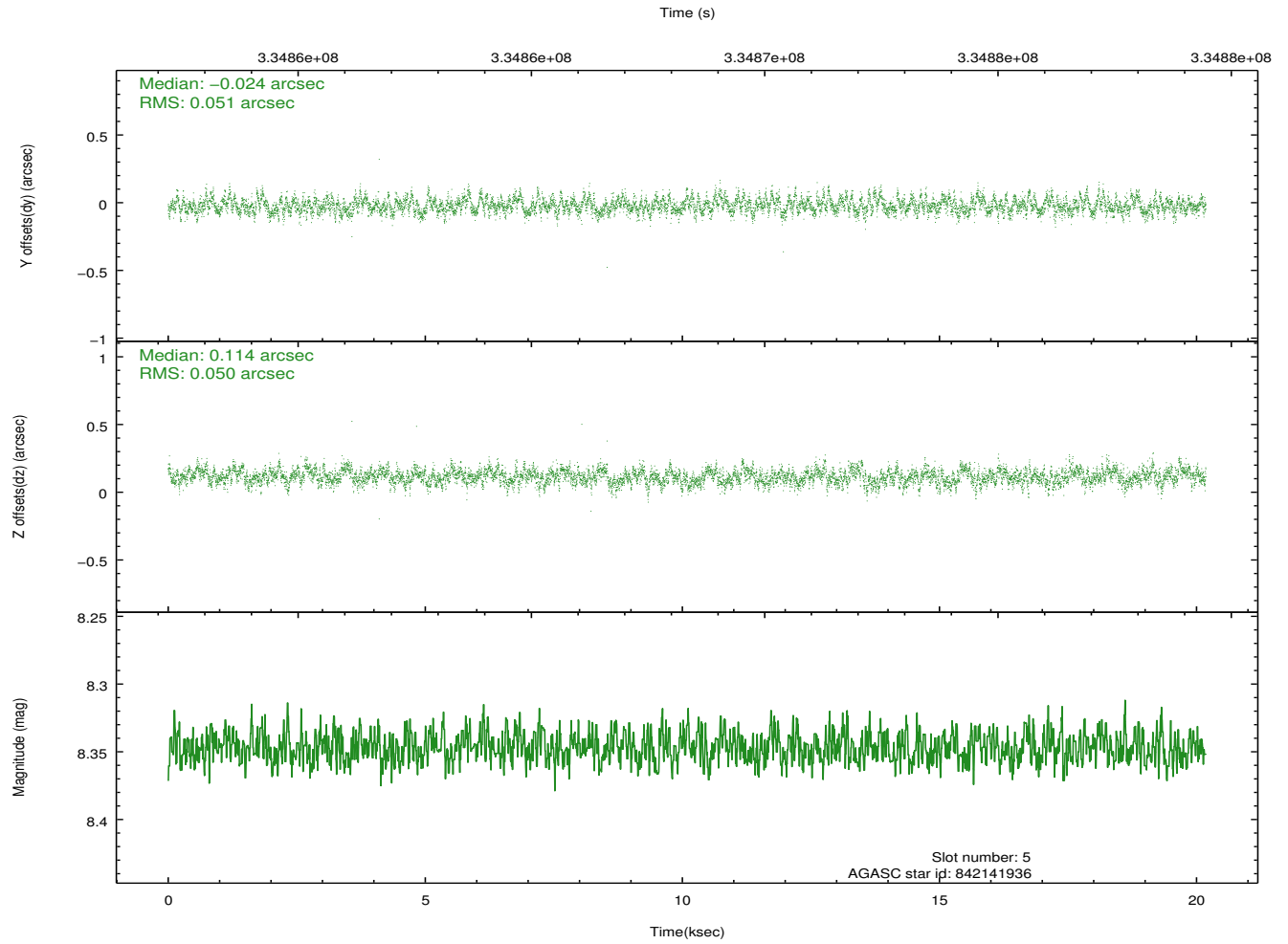
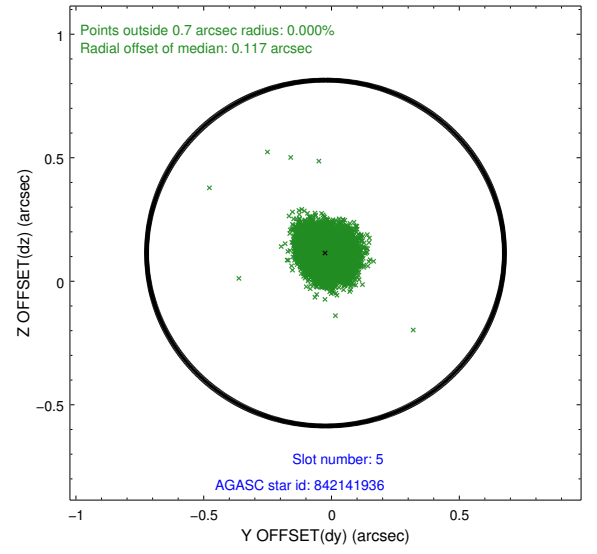
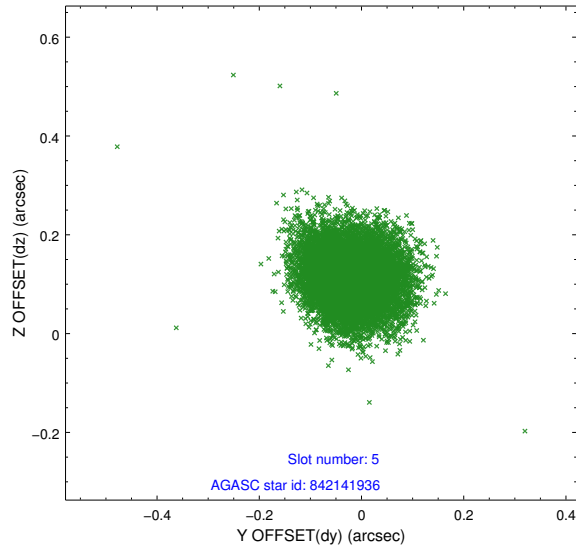
2.4.1 Slot 3



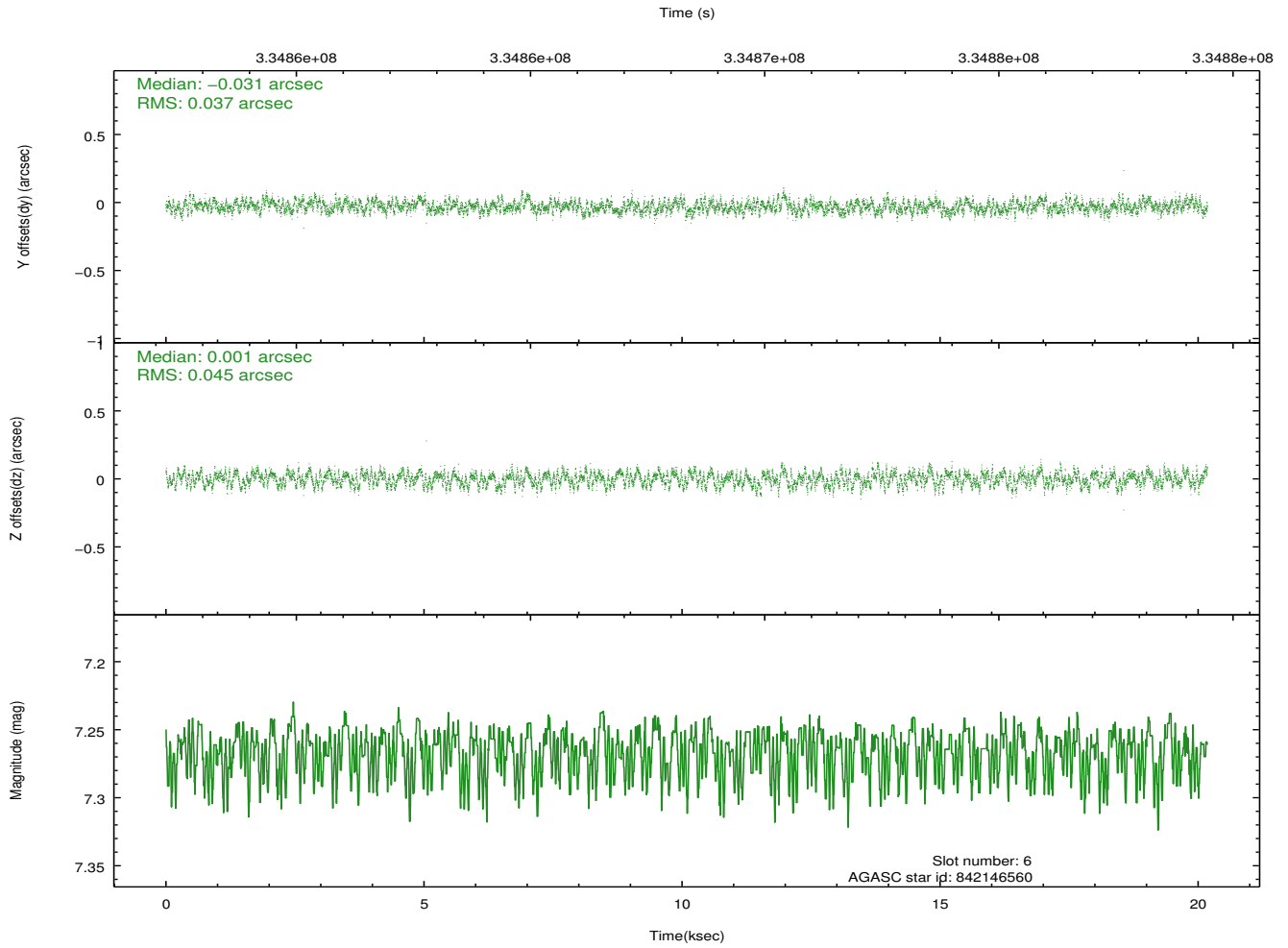
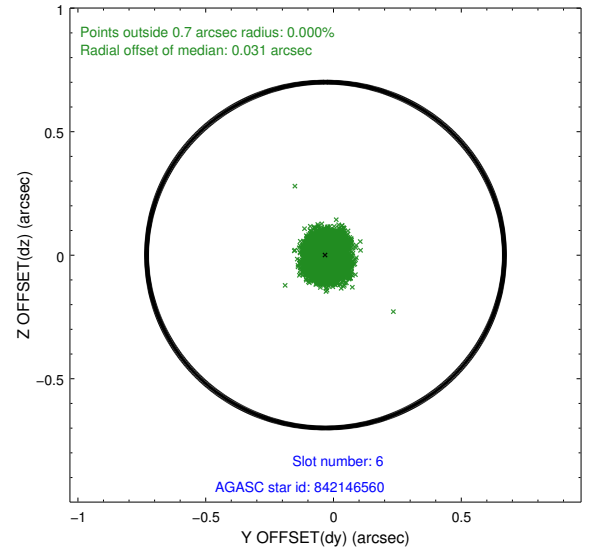
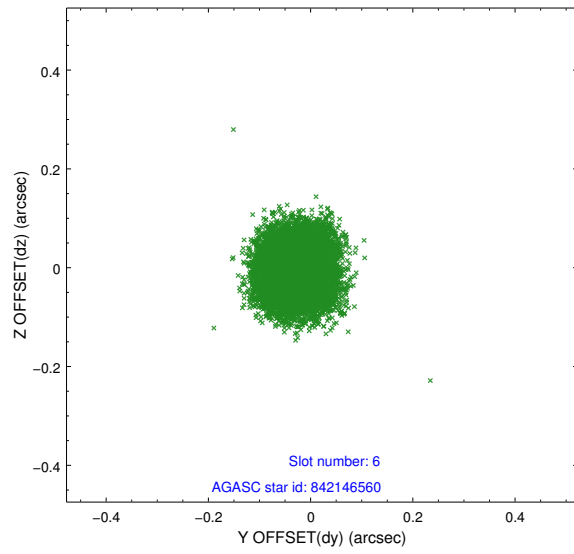
2.4.2 Slot 4



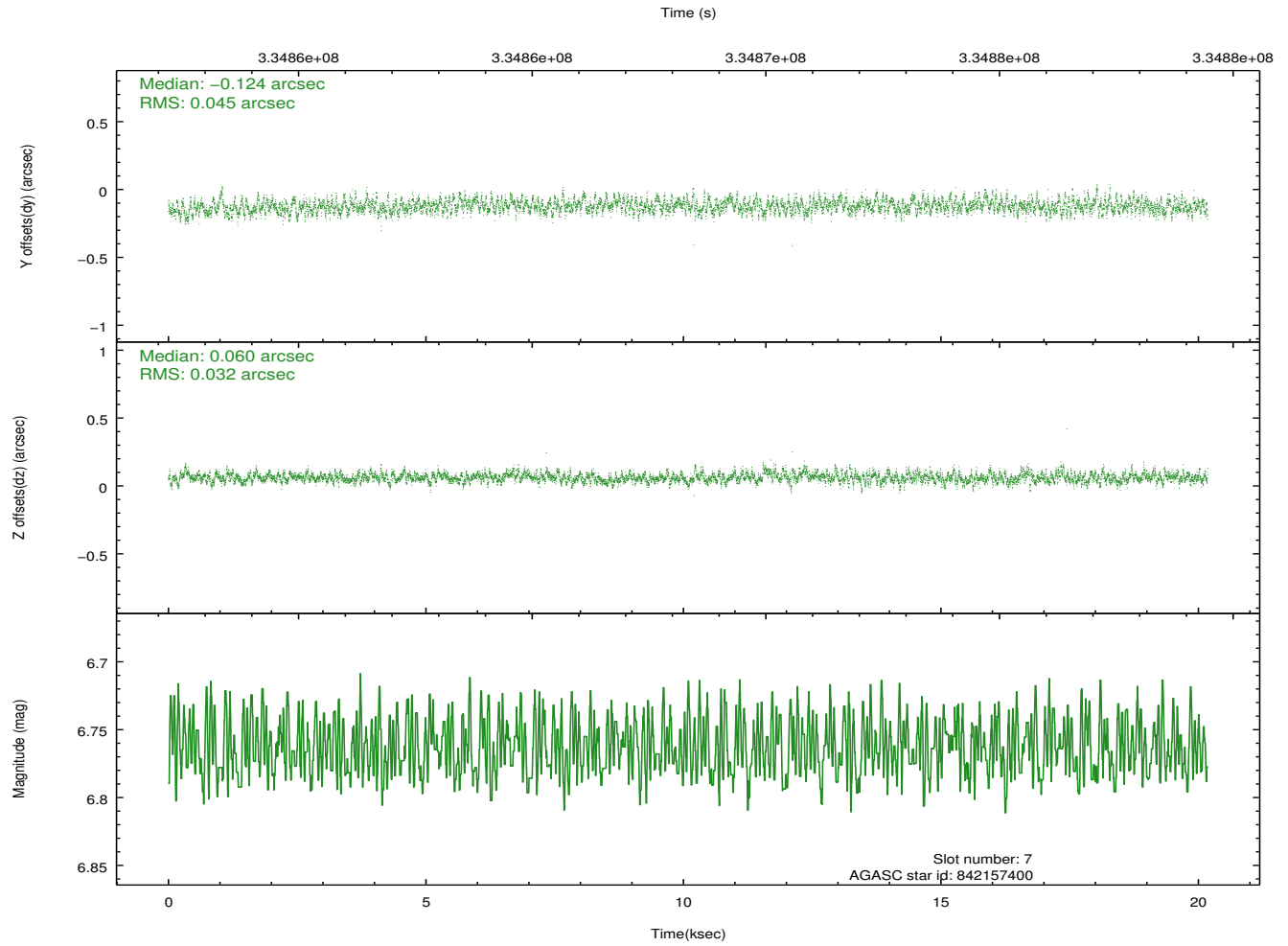
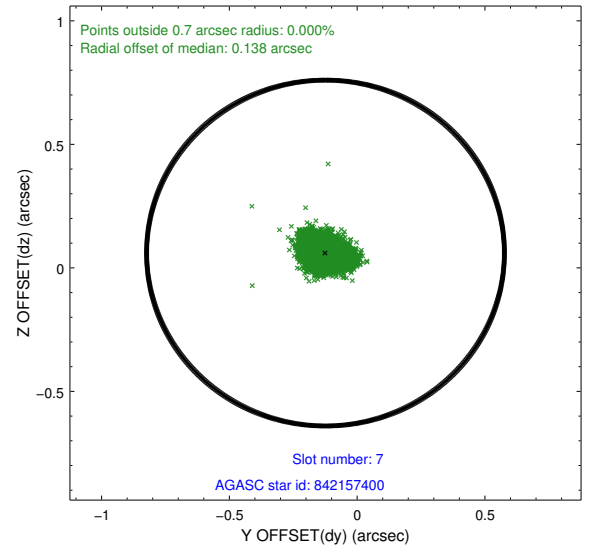
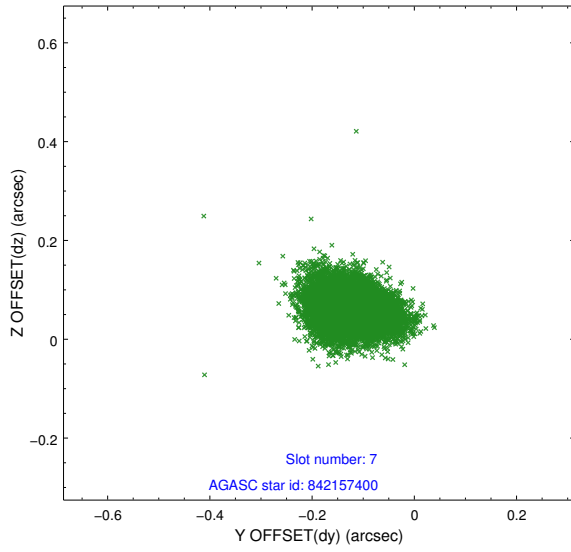
2.4.3 Slot 5



2.4.4 Slot 6

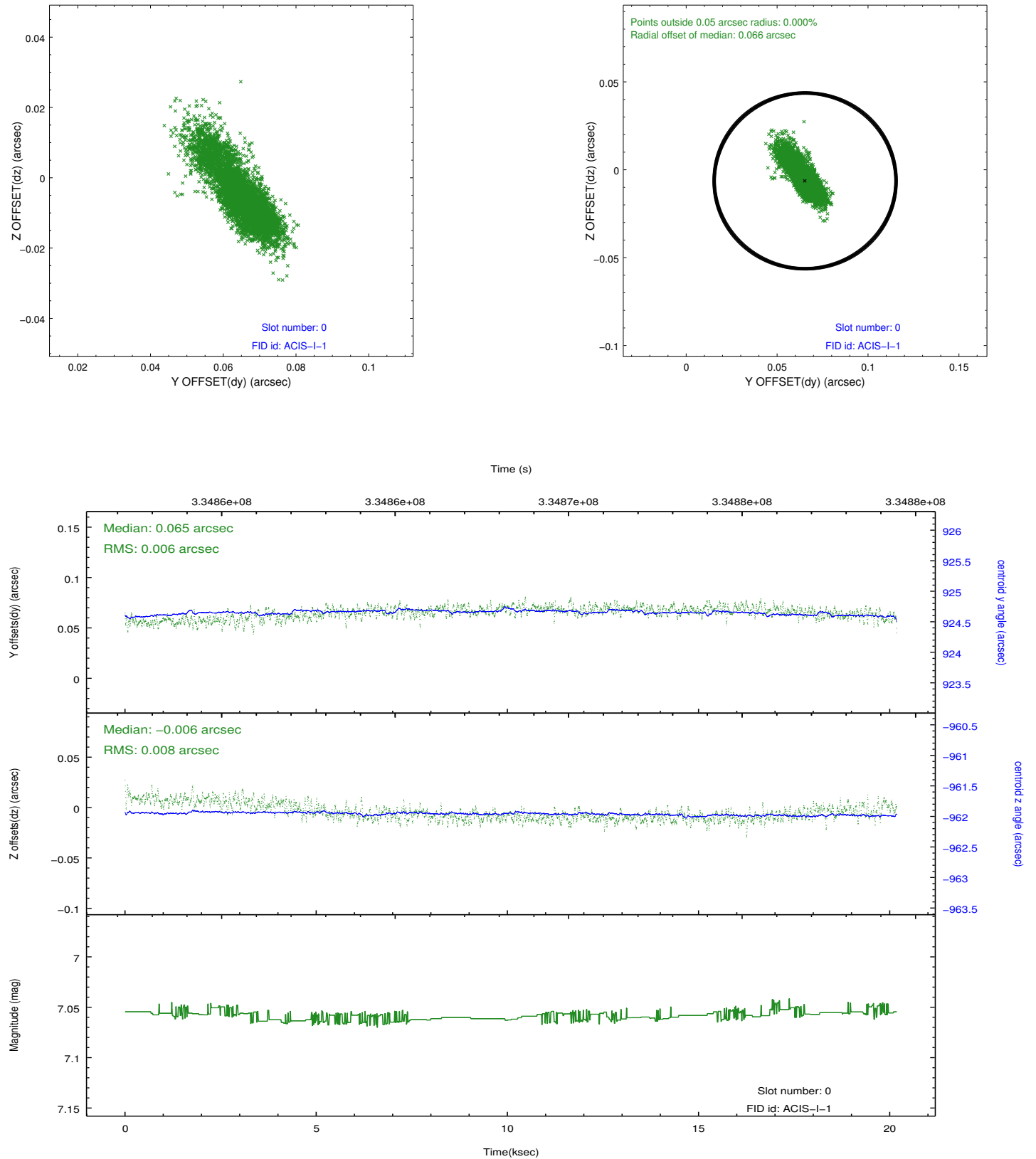


2.4.5 Slot 7

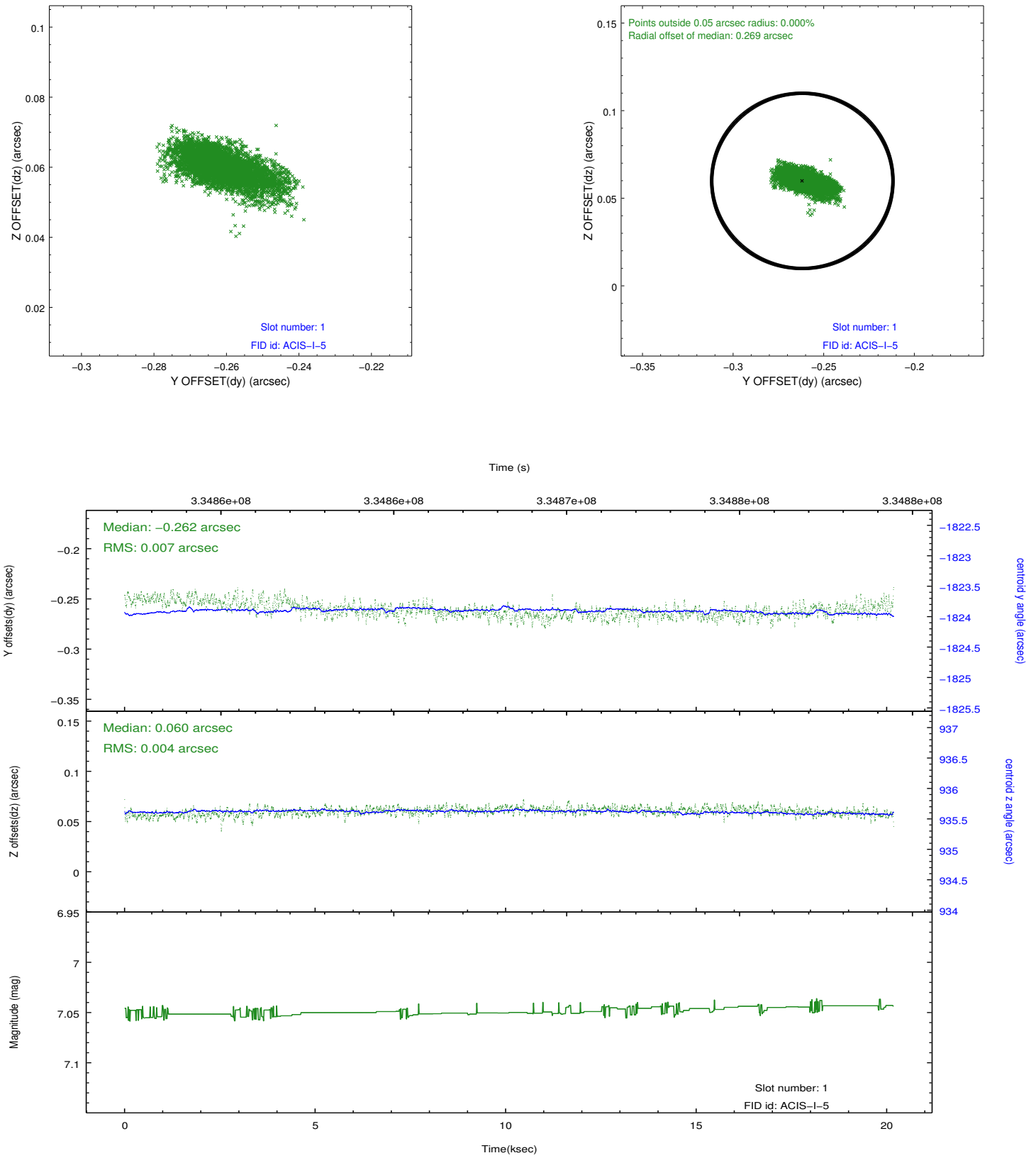


2.5 FID Slots

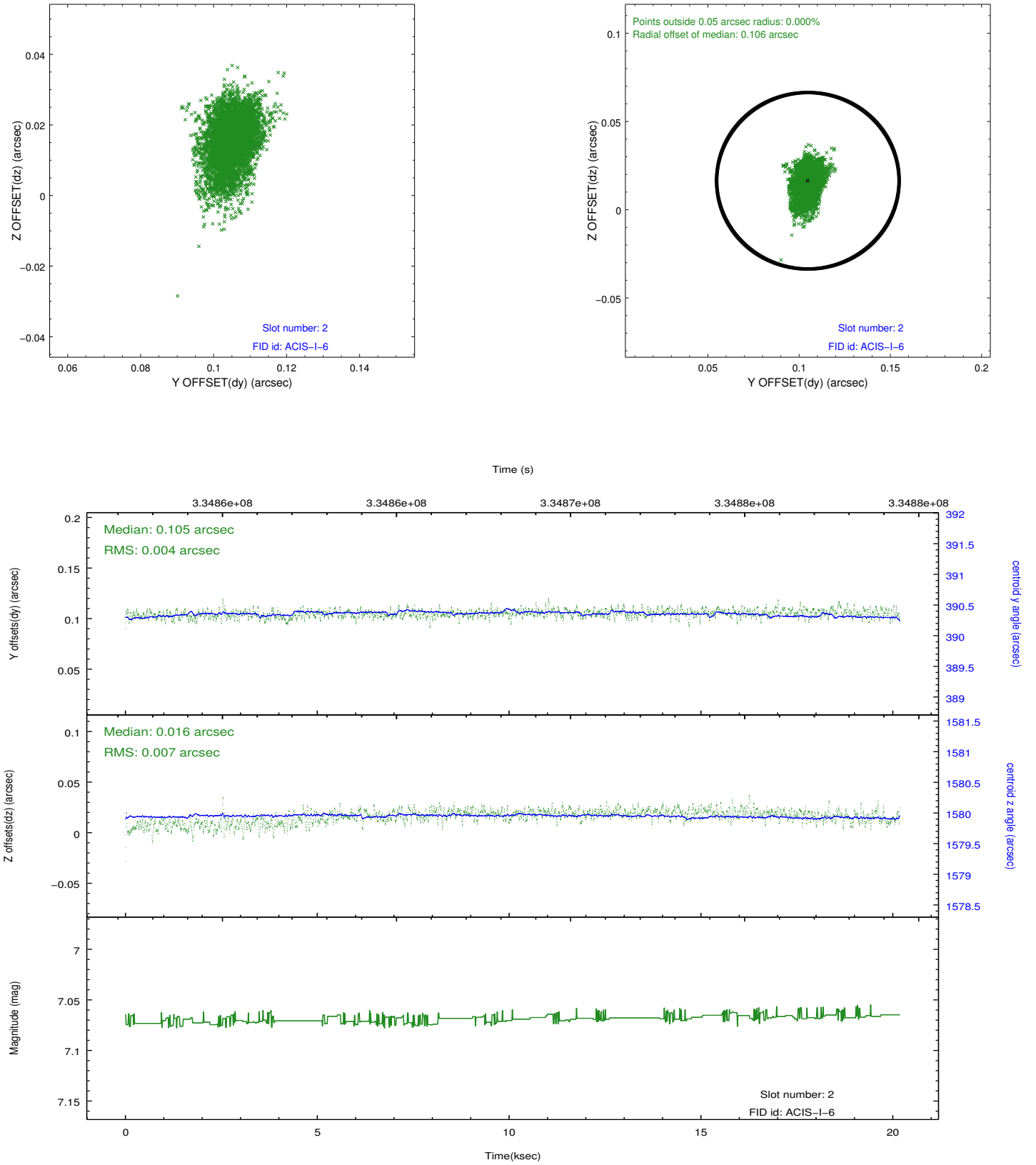
2.5.1 Slot 0



2.5.2 Slot 1



2.5.3 Slot 2



A Summary

A.1 Status

V&V Scientist	Jen Lauer
V&V Date (YYYY-MM-DD)	2012.05.29
V&V Edition	1
V&V Disposition and Status	OK
V&V Charge Time	20.1716591

A.2 Comments