

V&V Reference Report

L2 ASCDS Version : 8.4.4

Observation 9397 - L2 Version 2
Chandra X-Ray Center

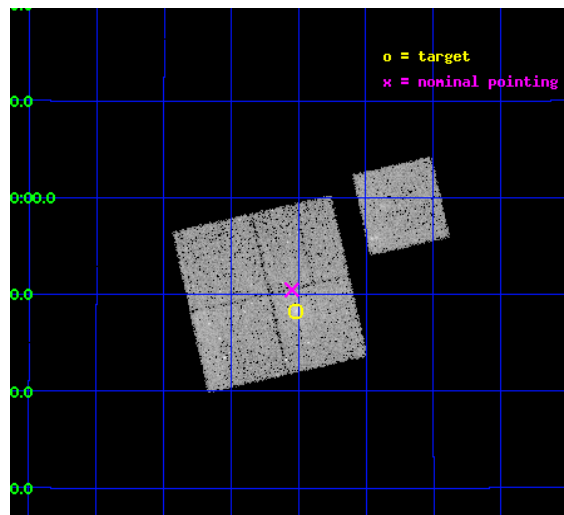
L2 Processing Date : May 6 2012

Contents

1	Front	2
2	OBI	3
2.1	OBI	3
2.1.1	Images	3
2.1.2	Bias	3
2.1.3	Parameters	4
2.1.4	Events	4
2.2	Compared Parameters	5
2.3	Aspect	6
2.4	Star Slots	9
2.4.1	Slot 3	9
2.4.2	Slot 4	10
2.4.3	Slot 5	11
2.4.4	Slot 6	12
2.4.5	Slot 7	13
2.5	FID Slots	14
2.5.1	Slot 0	14
2.5.2	Slot 1	15
2.5.3	Slot 2	16
A	Summary	17
A.1	Status	17
A.2	Comments	17

1 Front

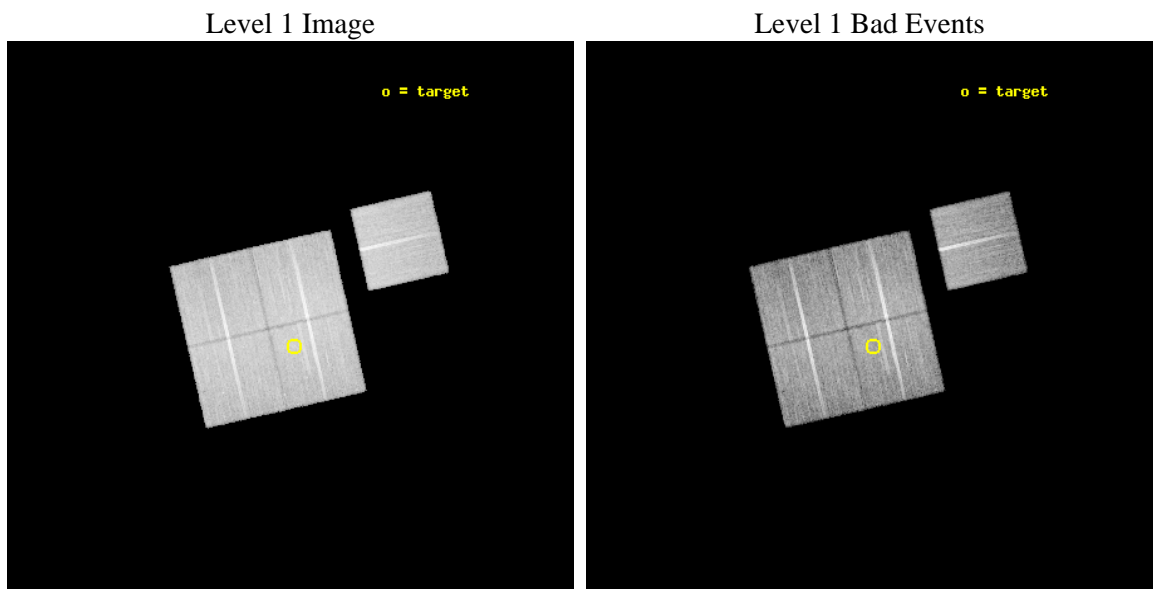
seq_num	800734	Sequence number
obs_id	9397	Observation id
title	SCALING RELATIONS FOR LOW-MASS GALAXY CLUSTERS AND GROUPS	Proposal
observer	Dr. Alexey Vikhlinin	Principal investigator
object	cl0838+1948	Source name
dtcycle	0	
cycle	P	events from which exps? Prim/Second/Both
ra_targ	129.630833	Observer's specified target RA [deg]
dec_targ	19.804167	Observer's specified target Dec [deg]
ra_nom	129.63734922708	Nominal RA [deg]
dec_nom	19.841467904607	Nominal Dec [deg]
roll_nom	77.189190460788	Nominal Roll [deg]
revision	2	Processing version of data
ontime	20165.377134264	Sum of GTIs [s]
livetime	19901.90163647	Livetime [s]
ontime0	20171.659154832	Sum of GTIs [s]
ontime1	20171.659144878	Sum of GTIs [s]
ontime2	20168.518154502	Sum of GTIs [s]
ontime3	20165.377134264	Sum of GTIs [s]
ontime6	20171.659154832	Sum of GTIs [s]
l2events	71506	Number of level 2 events



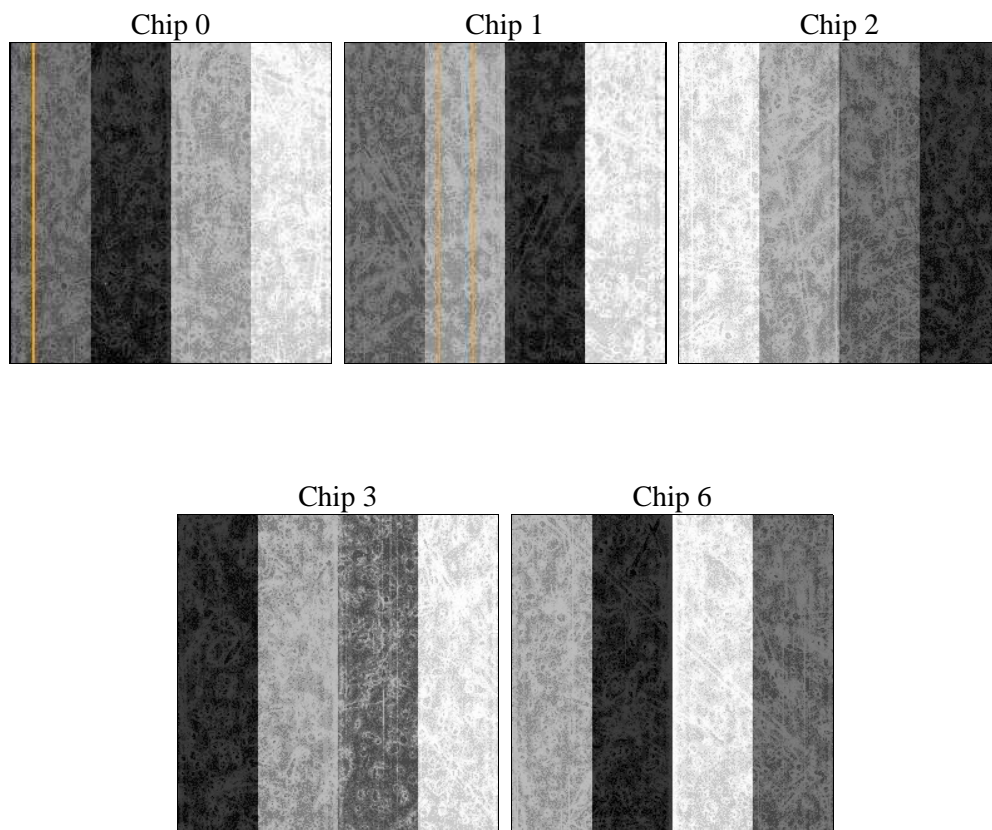
2 OBI

2.1 OBI

2.1.1 Images



2.1.2 Bias



2.1.3 Parameters

obi_num	1	Obi number	sched_exp_time	20000.000000	[s] Scheduled observation exposure time
ascdsver	8.4.4	Processing system revision	ontime	20165.377134264	Sum of GTIs [s]
caldbver	4.4.9	 	ontime0	20171.659154832	Sum of GTIs [s]
date	2012-05-06T14:33:08	Date and time of file creation	ontime1	20171.659144878	Sum of GTIs [s]
revision	2	Processing version of data	ontime2	20168.518154502	Sum of GTIs [s]
			ontime3	20165.377134264	Sum of GTIs [s]
			ontime6	20171.659154832	Sum of GTIs [s]
			l1events	802426	Number of level 1 events

2.1.4 Events

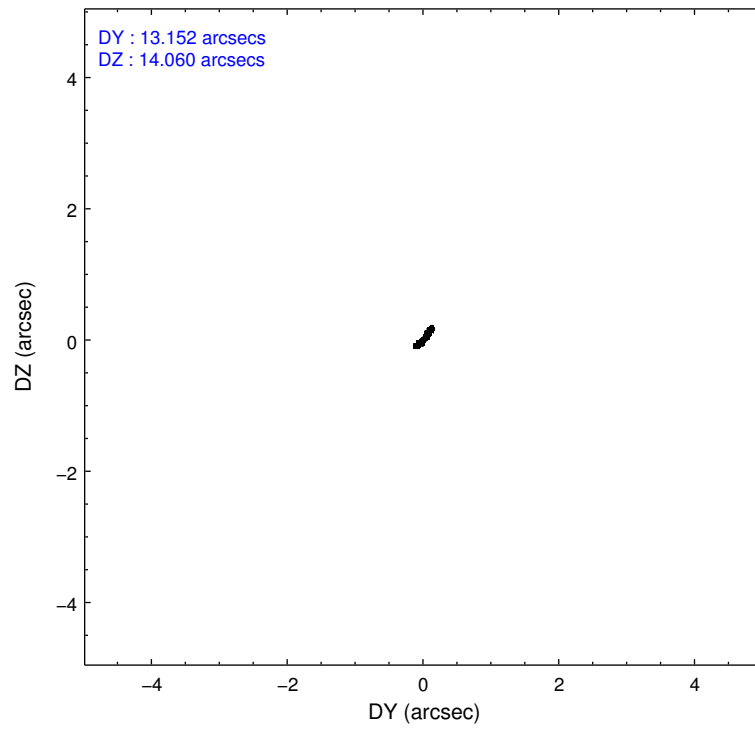
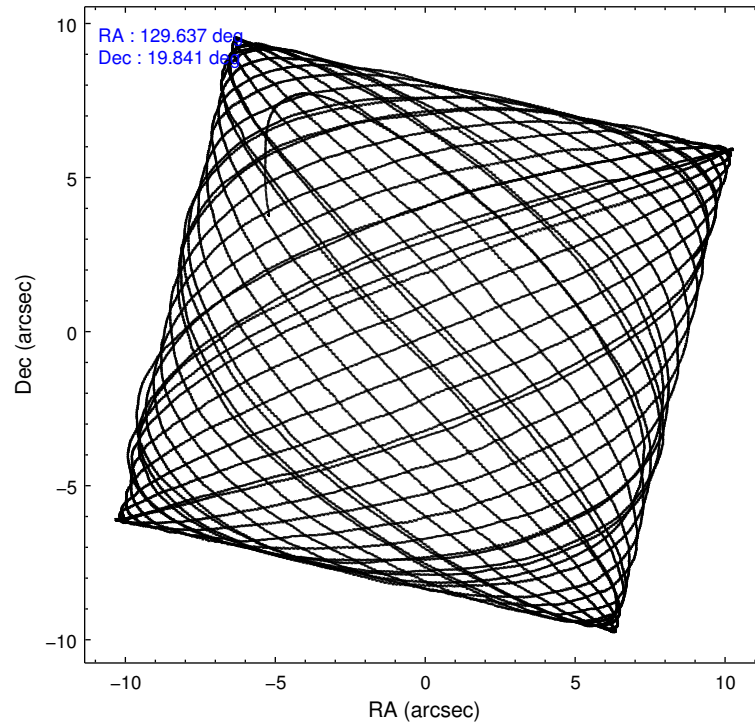
	ccd 0	ccd 1	ccd 2	ccd 3	ccd 6
level 1 events	149933	154714	172606	163236	161937
rejected events	133702	136197	156537	145482	145094
rejected %	89%	88%	90%	89%	89%

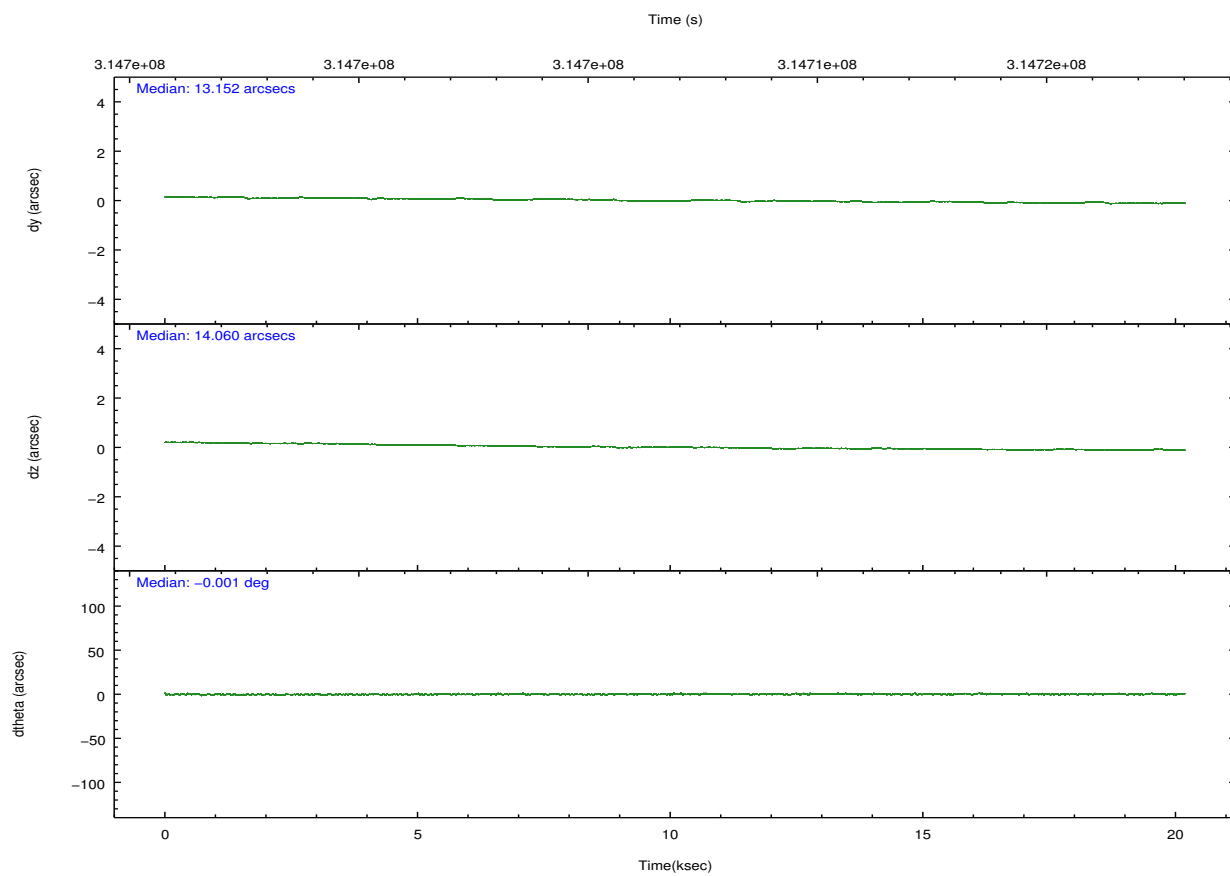
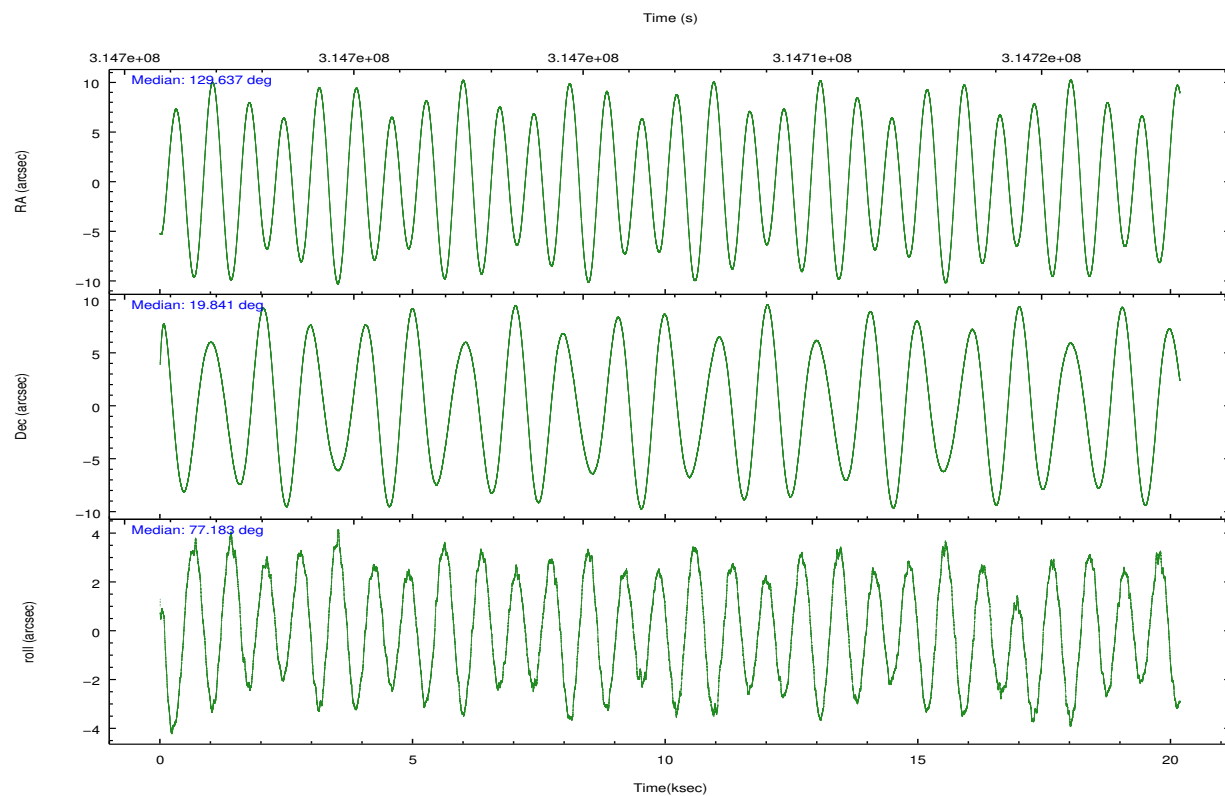
	ccd 0	ccd 1	ccd 2	ccd 3	ccd 6
grade 0 events	5814	7043	5890	7435	6020
	3%	4%	3%	4%	3%
grade 1 events	95	82	86	78	71
	0%	0%	0%	0%	0%
grade 2 events	3853	4137	3855	3669	3618
	2%	2%	2%	2%	2%
grade 3 events	1861	1968	1774	1840	1813
	1%	1%	1%	1%	1%
grade 4 events	1739	1923	1798	1760	1874
	1%	1%	1%	1%	1%
grade 5 events	5691	6262	5260	6587	6524
	3%	4%	3%	4%	4%
grade 6 events	3077	3578	2852	3197	3635
	2%	2%	1%	1%	2%
grade 7 events	127803	129721	151091	138670	138382
	85%	83%	87%	84%	85%

2.2 Compared Parameters

Parameter	Planned	Actual	Parameter	Planned	Actual
Instrument	ACIS	ACIS	Obspar format version number	7	7
Detector	ACIS-01236	ACIS-01236	Obspar file type	PREDICTED	ACTUAL
Grating	NONE	NONE	Obspar update status	NONE	UPDATED
Data mode	VFAINT	VFAINT	CCD I0 on	Y	Y
Observation mode	POINTING	POINTING	CCD I1 on	Y	Y
[deg] Pointing RA	129.646097	129.6373492270762	CCD I2 on	Y	Y
[deg] Pointing Dec	19.815216	19.84146790460693	CCD I3 on	Y	Y
[deg] Pointing Roll	76.977530	77.18919046078848	CCD S0 on	N	N
[mm] SIM focus pos	-0.782348	-0.7809083437167272	CCD S1 on	N	N
[mm] SIM defocus	0	0.001439871863259334	CCD S2 on	O1	Y
[mm] SIM translation stage pos	-228.592463	-228.5990329025337	CCD S3 on	N	N
[mm] SIM translation stage offset	-5	-4.993420100396037	CCD S4 on	N	N
[s] Observation start time (MET)	314696988.184000	314695918.83739	CCD S5 on	N	N
Observation start date	2007-12-22T07:48:43	2007-12-22T07:31:58	Number of optional ACIS chips dropped	0	0
[s] Observation end time (MET)	314716988.184000	314717846.66345	On-chip summing requested	N	N
Observation end date	2007-12-22T13:22:03	2007-12-22T13:37:26	Subarray requested	NONE	NONE
Read mode	TIMED	TIMED	Alternating exposures requested	N	N
			[s] Primary exposure time	0.000000	3.1

2.3 Aspect



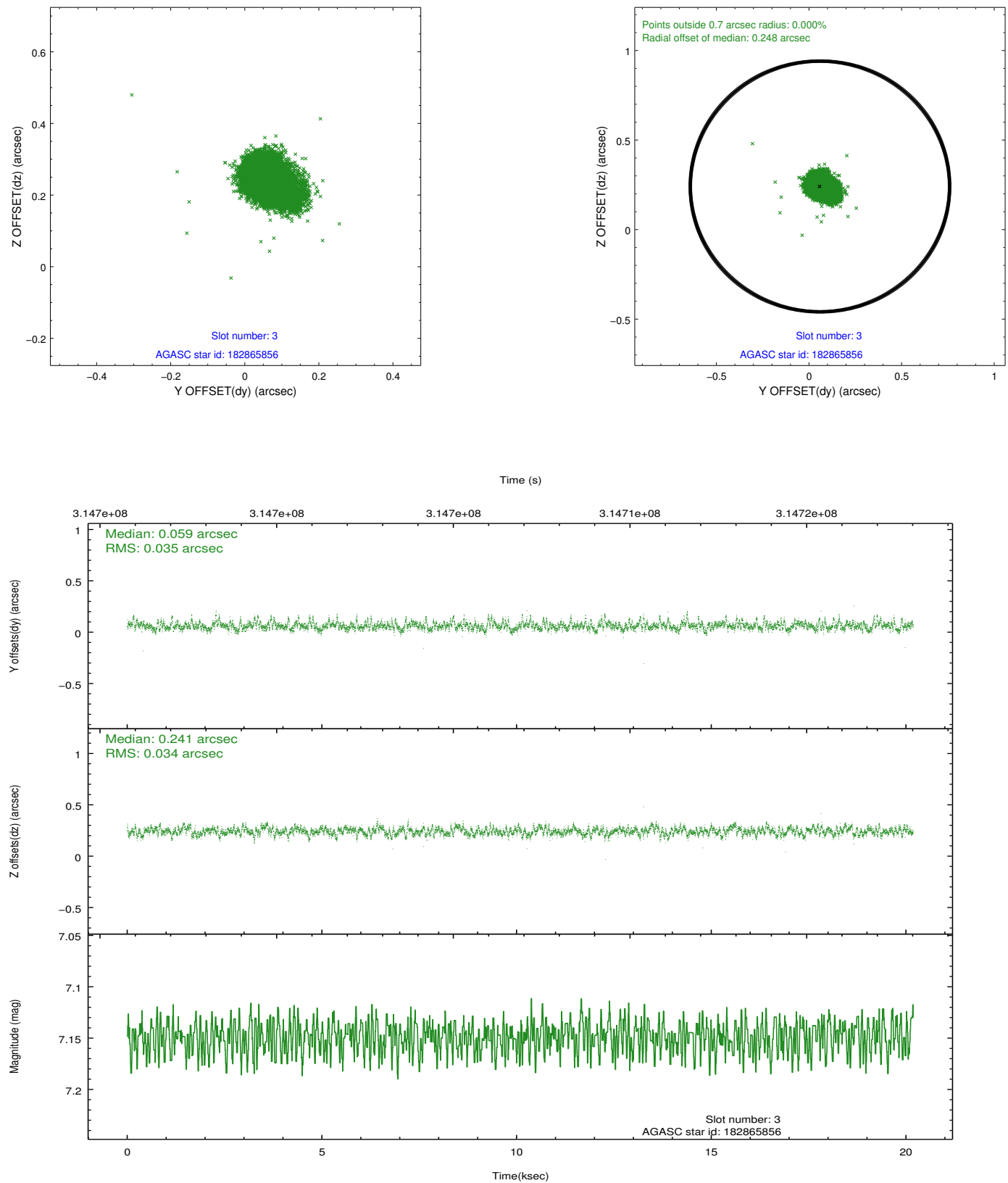


Slot Statistics

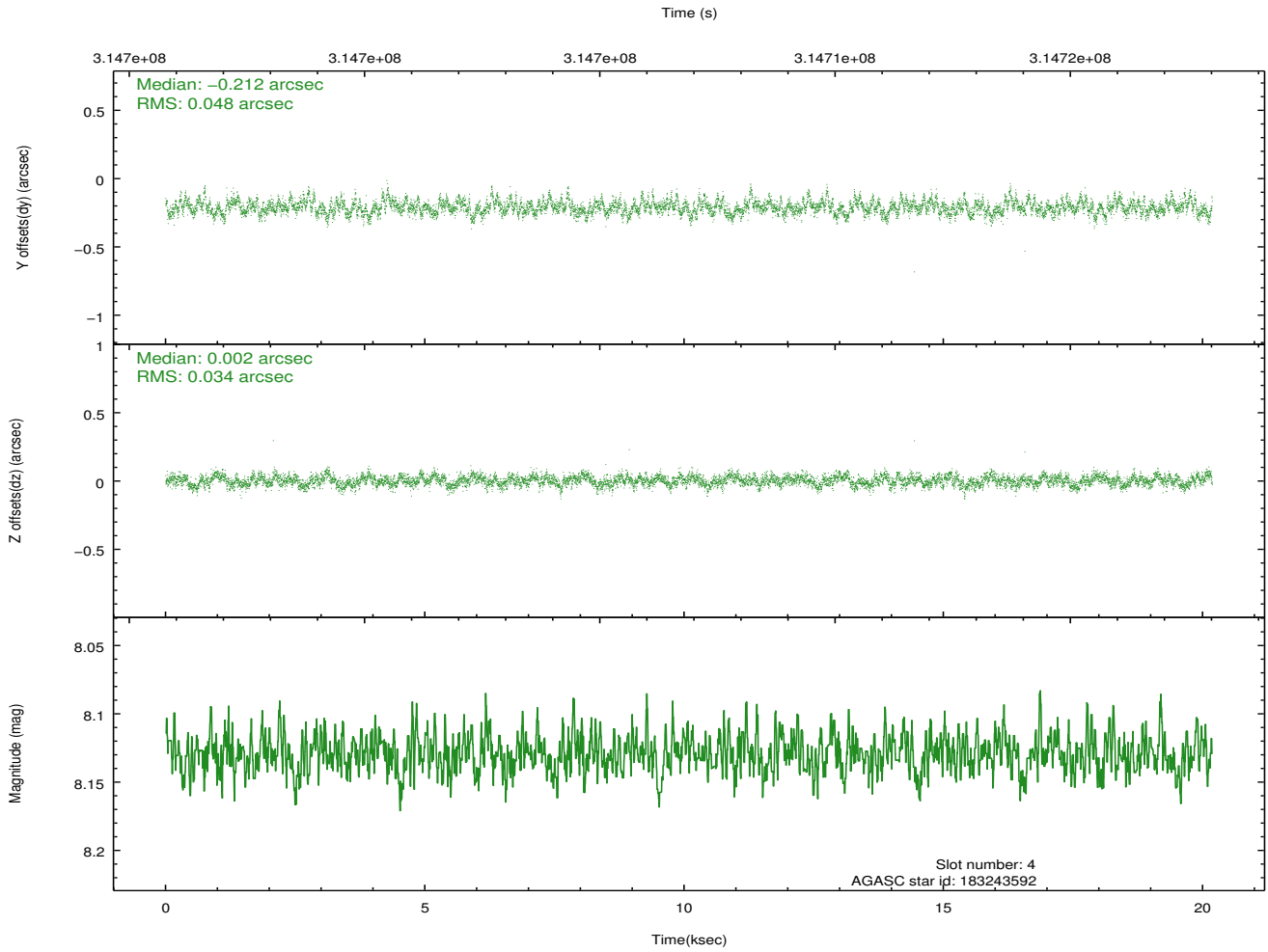
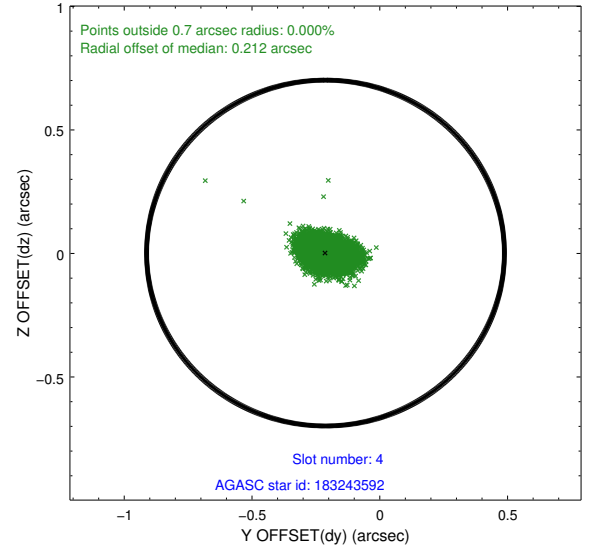
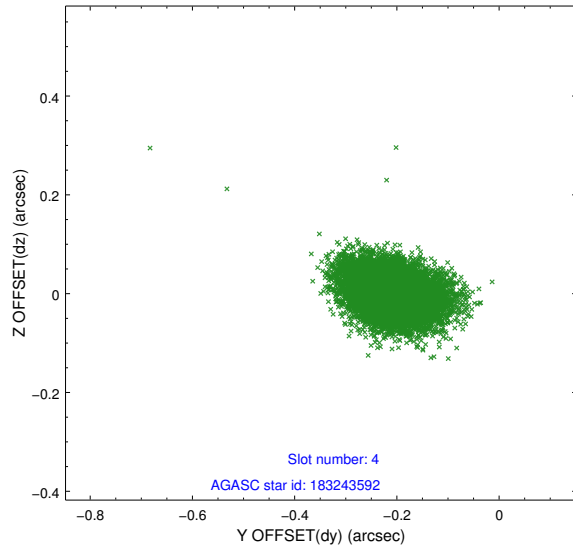
slot	status	id	mag	n_pts	med_dy	med_dz	dr1	dr2	ra	dec	mean_y	mean_z
0	FID	ACIS-I-1	7.24	4923	0.114	-0.067	0.007	0.013	0.000000	0.000000	926.36	-940.21
1	FID	ACIS-I-5	7.22	4923	-0.257	0.102	0.006	0.010	0.000000	0.000000	-1821.99	957.38
2	FID	ACIS-I-6	7.23	4923	0.052	0.036	0.007	0.012	0.000000	0.000000	391.68	1602.00
3	GUIDE	182865856	7.15	9844	0.059	0.241	0.049	0.087	130.234570	19.580336	-370.48	-2133.98
4	GUIDE	183243592	8.13	9839	-0.212	0.002	0.060	0.104	129.360103	20.487100	2139.78	1484.88
5	GUIDE	182864408	7.87	9840	0.069	-0.248	0.070	0.108	128.937799	19.771161	-690.42	2303.31
6	GUIDE	182861632	7.08	9846	0.097	0.213	0.063	0.100	130.083935	19.348995	-1298.14	-1826.22
7	GUIDE	183241560	7.86	9841	-0.018	-0.221	0.061	0.099	129.072669	20.341499	1412.49	2313.53

2.4 Star Slots

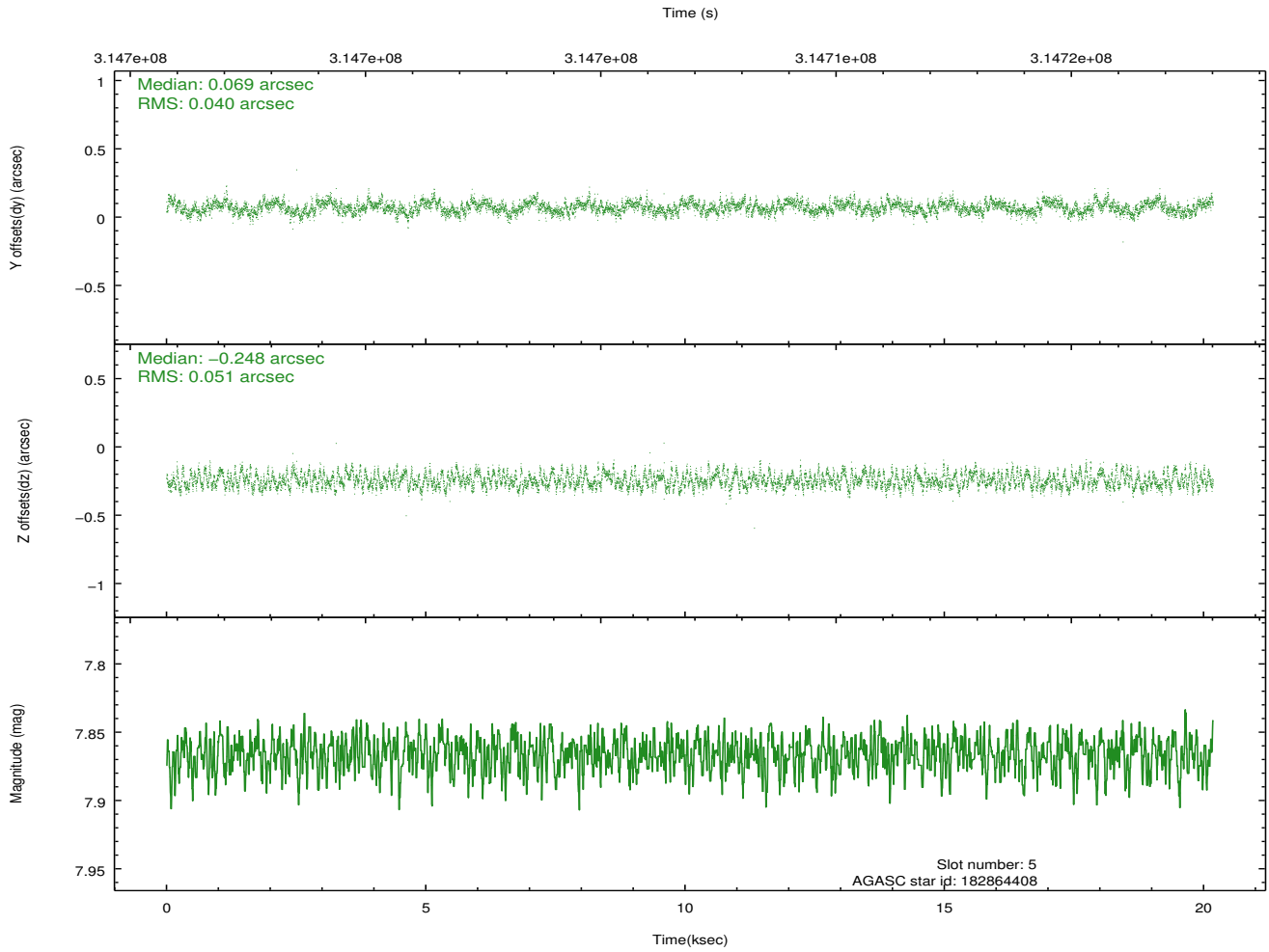
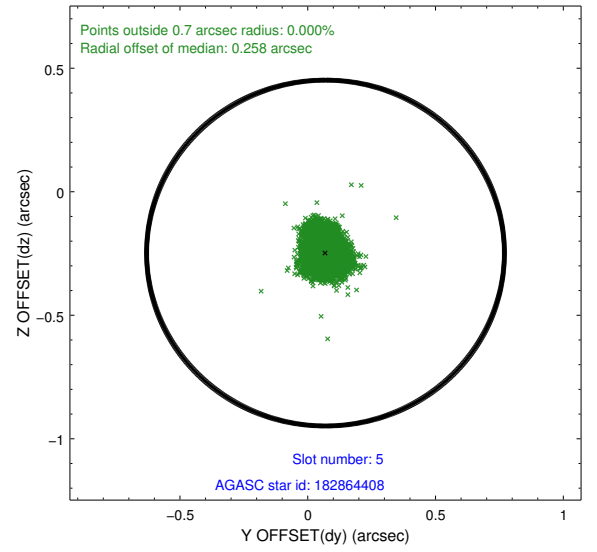
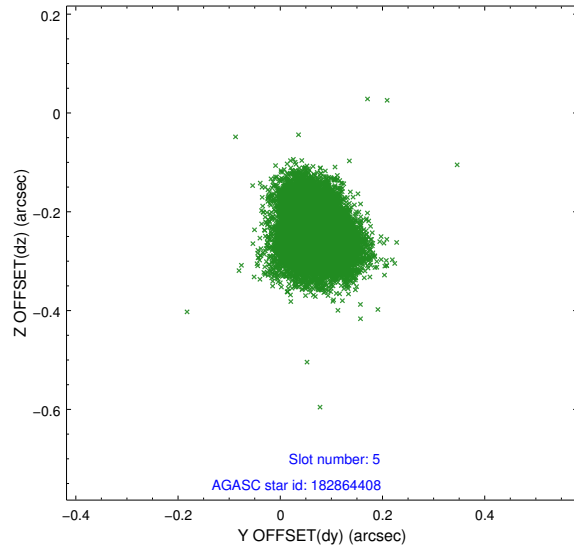
2.4.1 Slot 3



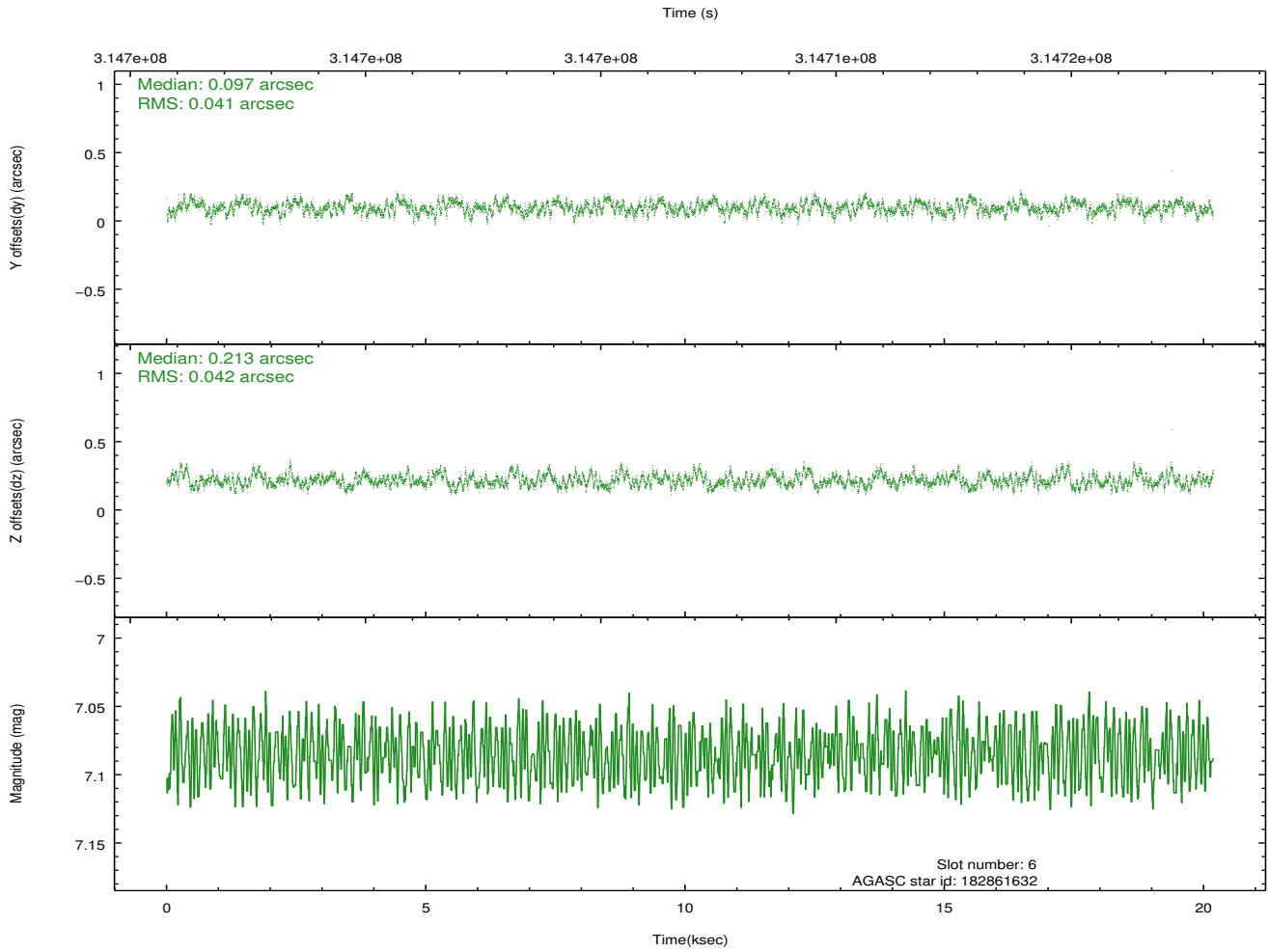
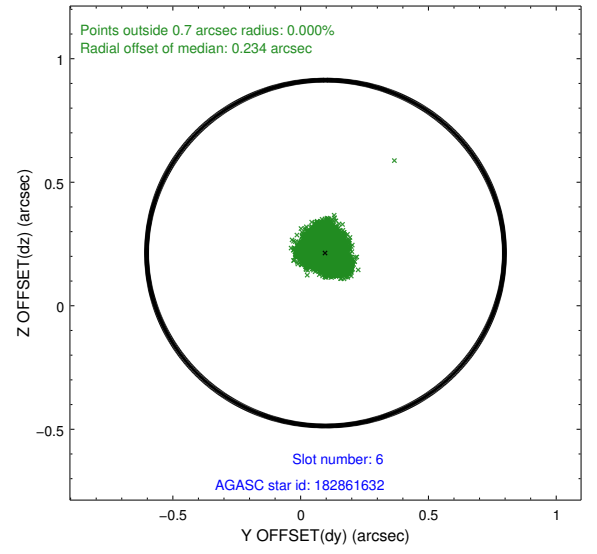
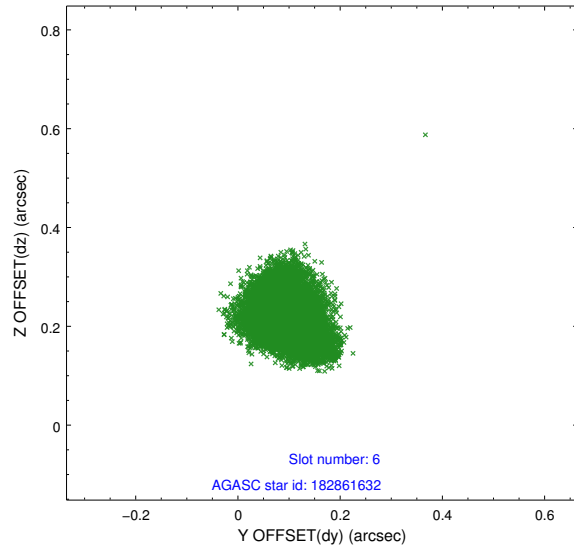
2.4.2 Slot 4



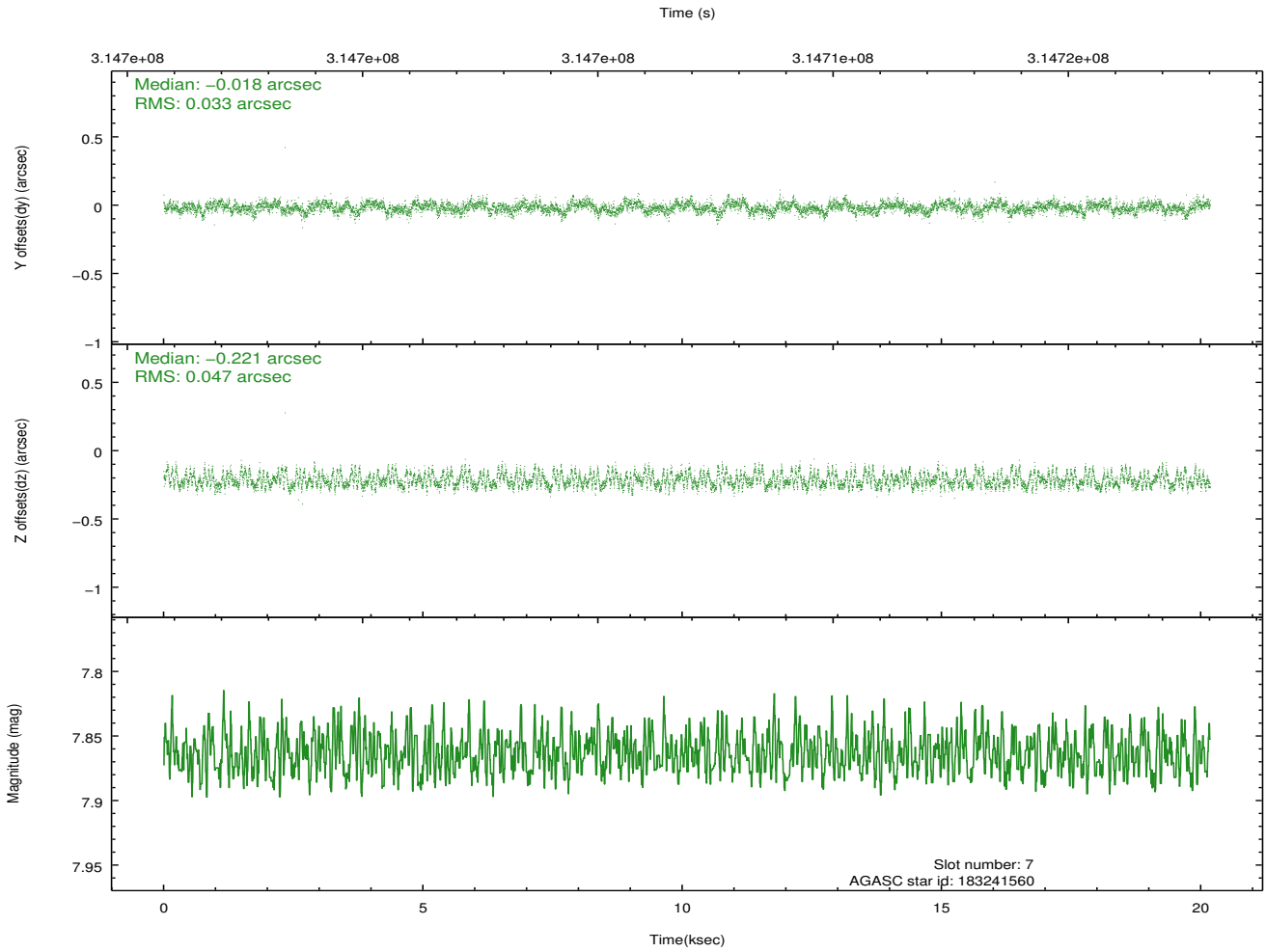
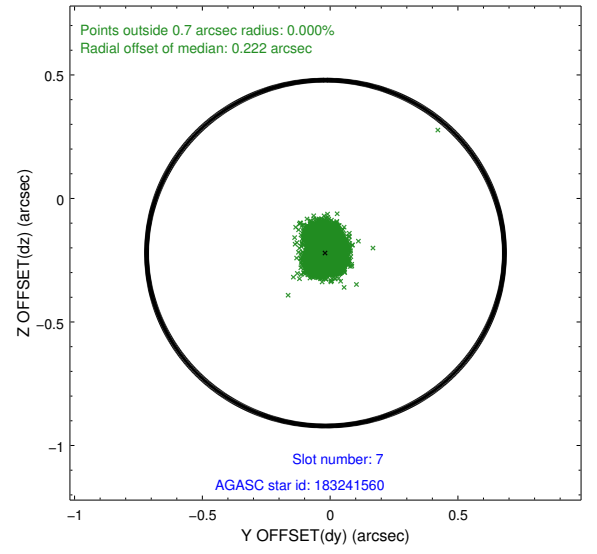
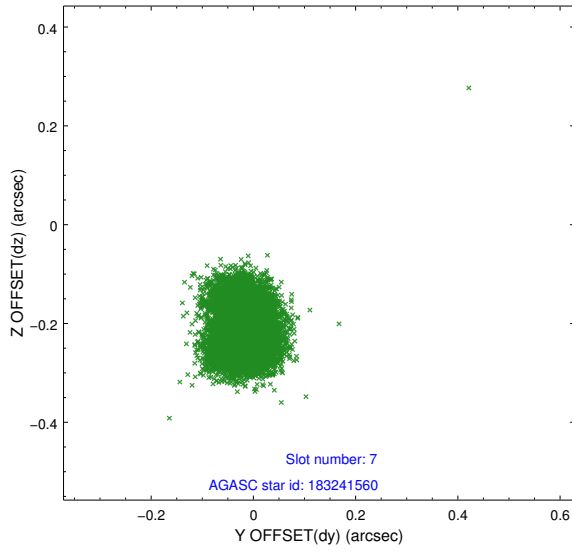
2.4.3 Slot 5



2.4.4 Slot 6

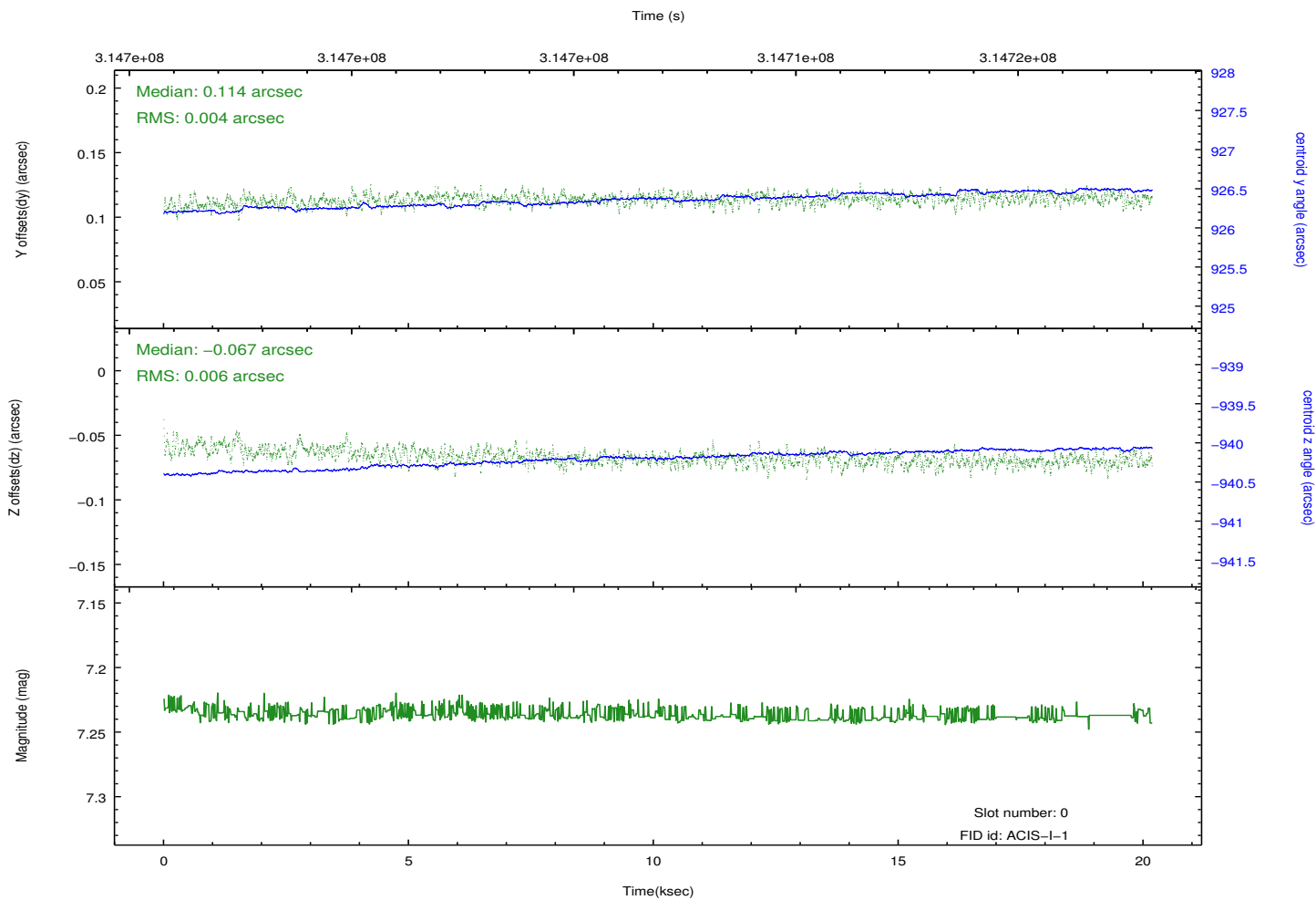
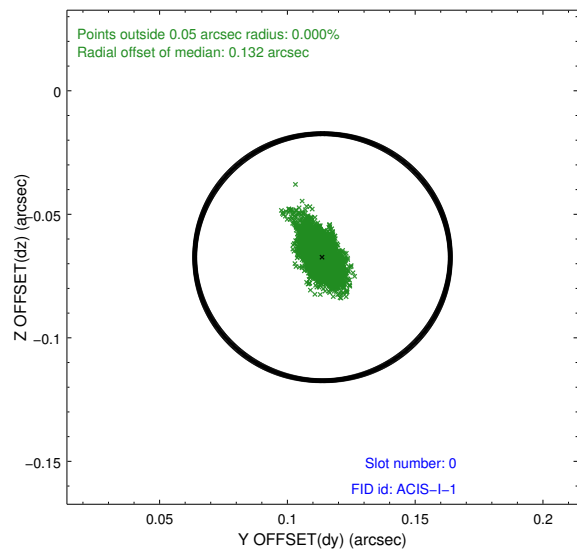
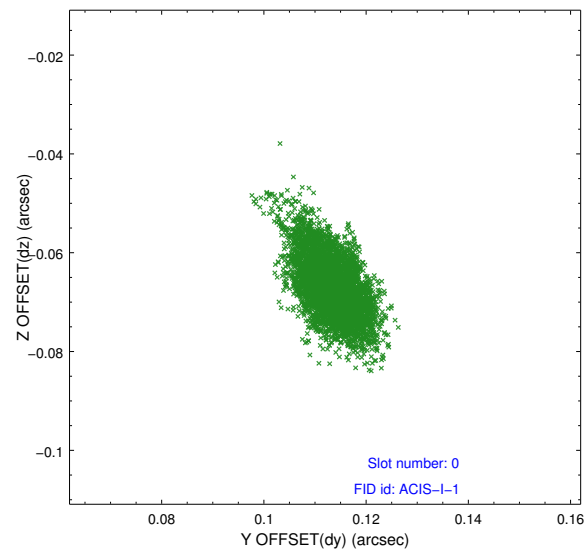


2.4.5 Slot 7

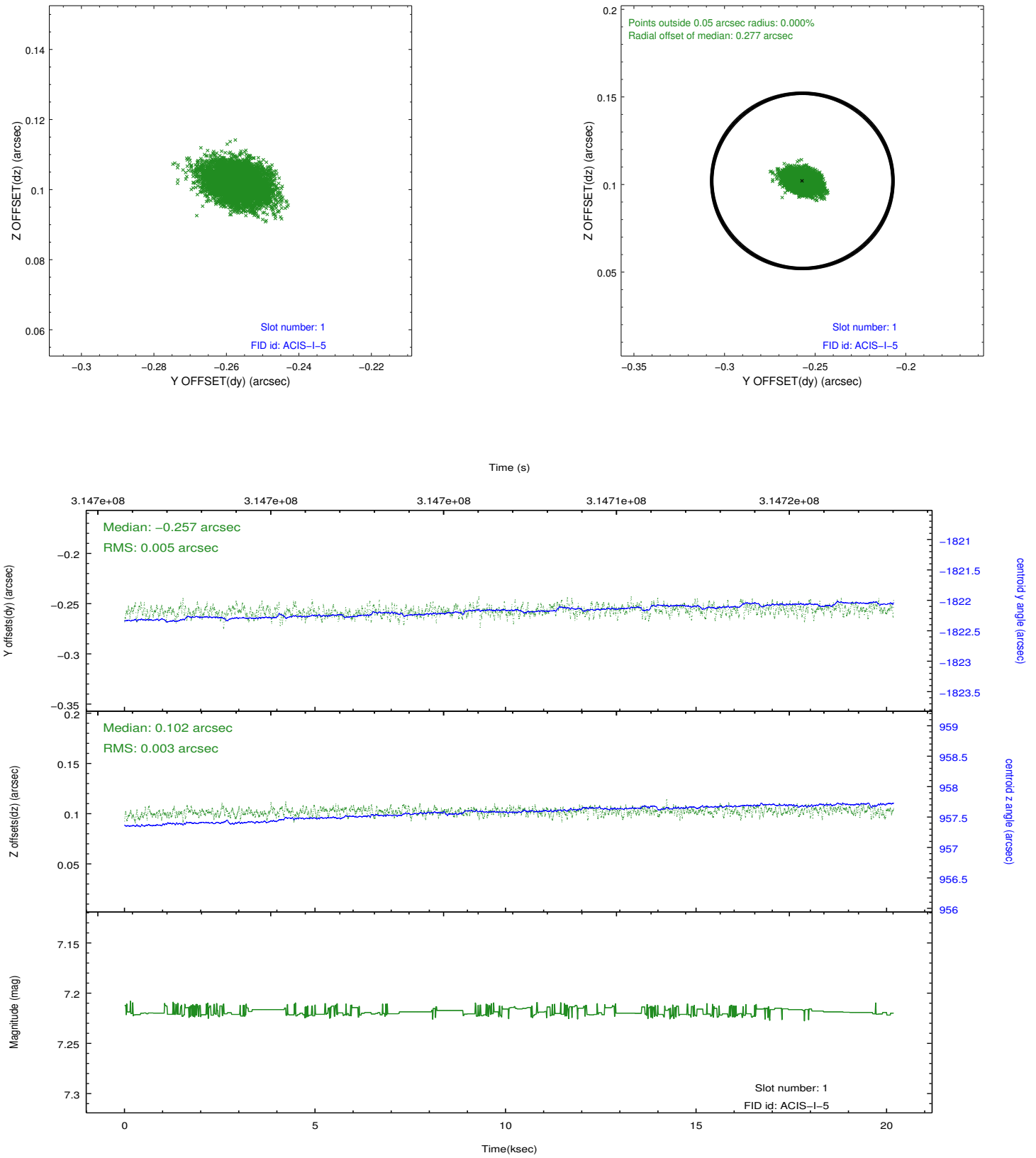


2.5 FID Slots

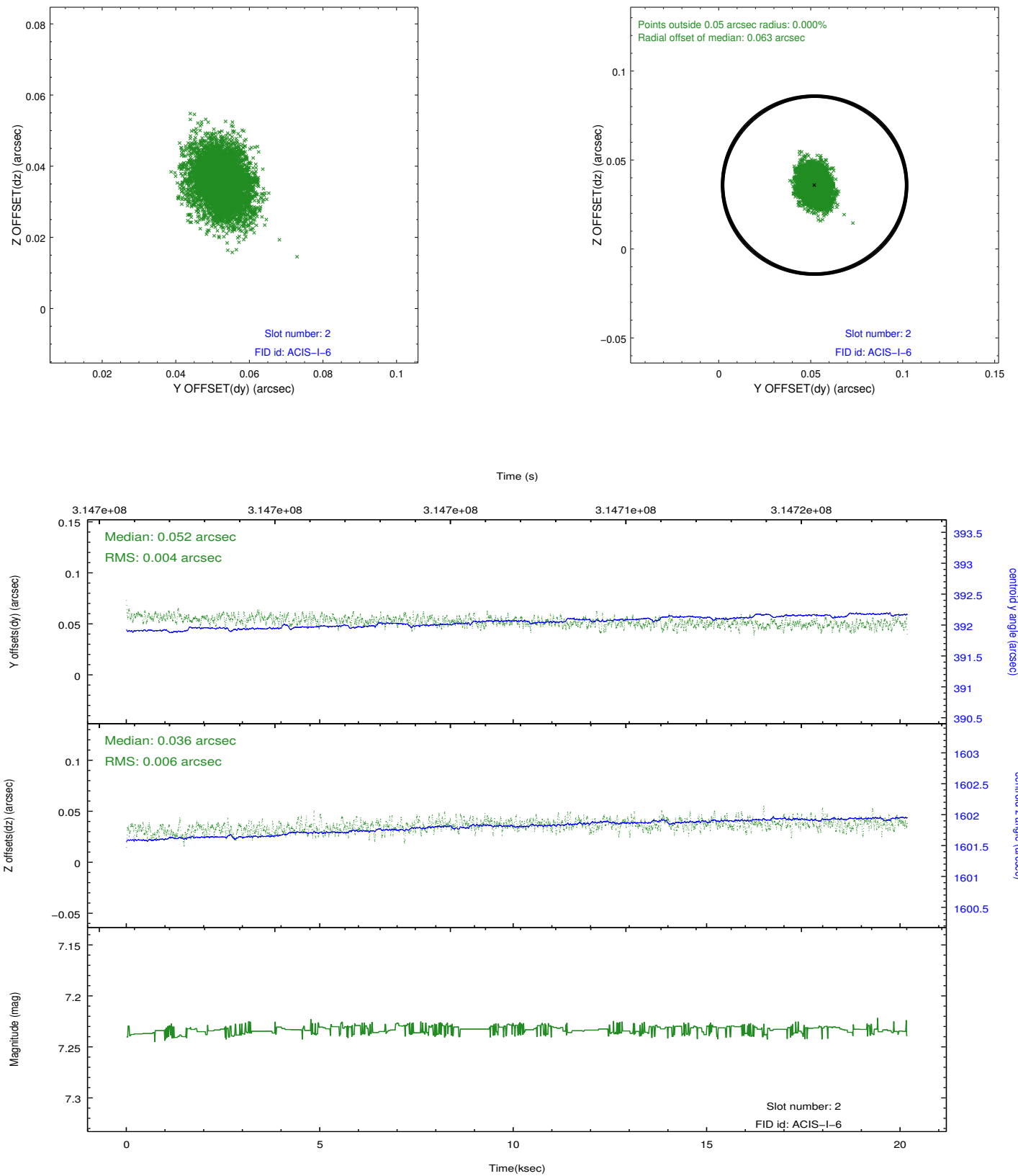
2.5.1 Slot 0



2.5.2 Slot 1



2.5.3 Slot 2



A Summary

A.1 Status

V&V Scientist	Jen Lauer
V&V Date (YYYY-MM-DD)	2012.05.08
V&V Edition	1
V&V Disposition and Status	OK
V&V Charge Time	20.1653771

A.2 Comments