

V&V Reference Report

L2 ASCDS Version : 8.4.4

Observation 9391 - L2 Version 2
Chandra X-Ray Center

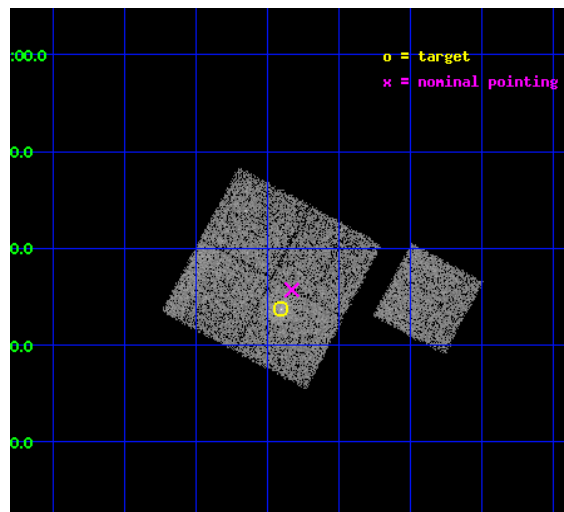
L2 Processing Date : May 17 2012

Contents

1	Front	2
2	OBI	3
2.1	OBI	3
2.1.1	Images	3
2.1.2	Bias	3
2.1.3	Parameters	4
2.1.4	Events	4
2.2	Compared Parameters	5
2.3	Aspect	6
2.4	Star Slots	9
2.4.1	Slot 3	9
2.4.2	Slot 4	10
2.4.3	Slot 5	11
2.4.4	Slot 6	12
2.4.5	Slot 7	13
2.5	FID Slots	14
2.5.1	Slot 0	14
2.5.2	Slot 1	15
2.5.3	Slot 2	16
A	Summary	17
A.1	Status	17
A.2	Comments	17

1 Front

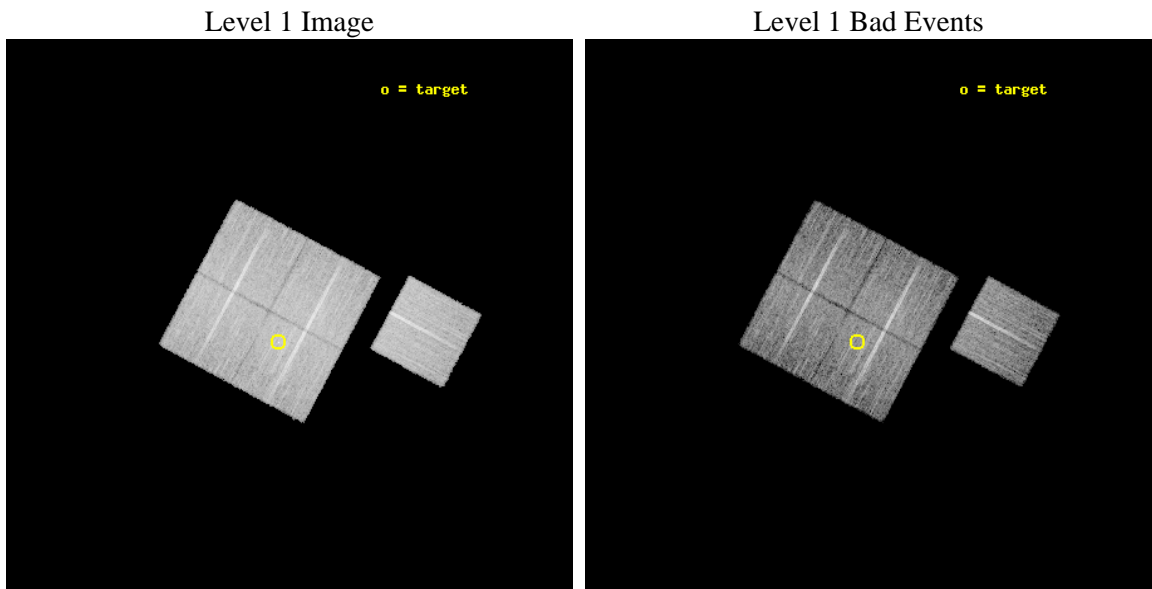
seq_num	800728	Sequence number
obs_id	9391	Observation id
title	SCALING RELATIONS FOR LOW-MASS GALAXY CLUSTERS AND GROUPS	Proposal
observer	Dr. Alexey Vikhlinin	Principal investigator
object	cl0327+0233	Source name
dtcycle	0	
cycle	P	events from which exps? Prim/Second/Both
ra_targ	51.977083	Observer's specified target RA [deg]
dec_targ	2.563056	Observer's specified target Dec [deg]
ra_nom	51.957248103913	Nominal RA [deg]
dec_nom	2.5952049723195	Nominal Dec [deg]
roll_nom	118.1726006256	Nominal Roll [deg]
revision	2	Processing version of data
ontime	11268.500086665	Sum of GTIs [s]
livetime	11121.268837284	Livetime [s]
ontime0	11268.500086665	Sum of GTIs [s]
ontime1	11268.500086665	Sum of GTIs [s]
ontime2	11268.500086665	Sum of GTIs [s]
ontime3	11268.500086665	Sum of GTIs [s]
ontime6	11268.500086665	Sum of GTIs [s]
l2events	39480	Number of level 2 events



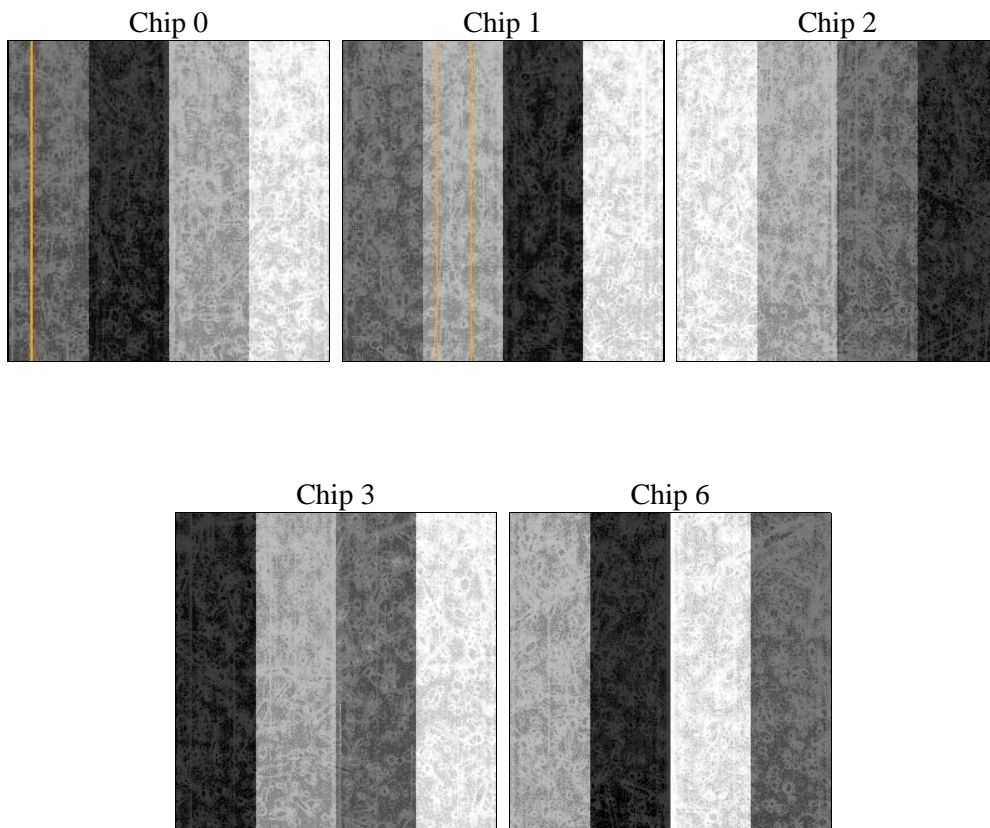
2 OBI

2.1 OBI

2.1.1 Images



2.1.2 Bias



2.1.3 Parameters

obi_num	0	Obi number	sched_exp_time	11102.777000	[s] Scheduled observation exposure time
ascdsver	8.4.4	Processing system revision	ontime	11268.500086665	Sum of GTIs [s]
caldbver	4.4.9	 	ontime0	11268.500086665	Sum of GTIs [s]
date	2012-05-17T15:26:34	Date and time of file creation	ontime1	11268.500086665	Sum of GTIs [s]
revision	2	Processing version of data	ontime2	11268.500086665	Sum of GTIs [s]
			ontime3	11268.500086665	Sum of GTIs [s]
			ontime6	11268.500086665	Sum of GTIs [s]
			l1events	479111	Number of level 1 events

2.1.4 Events

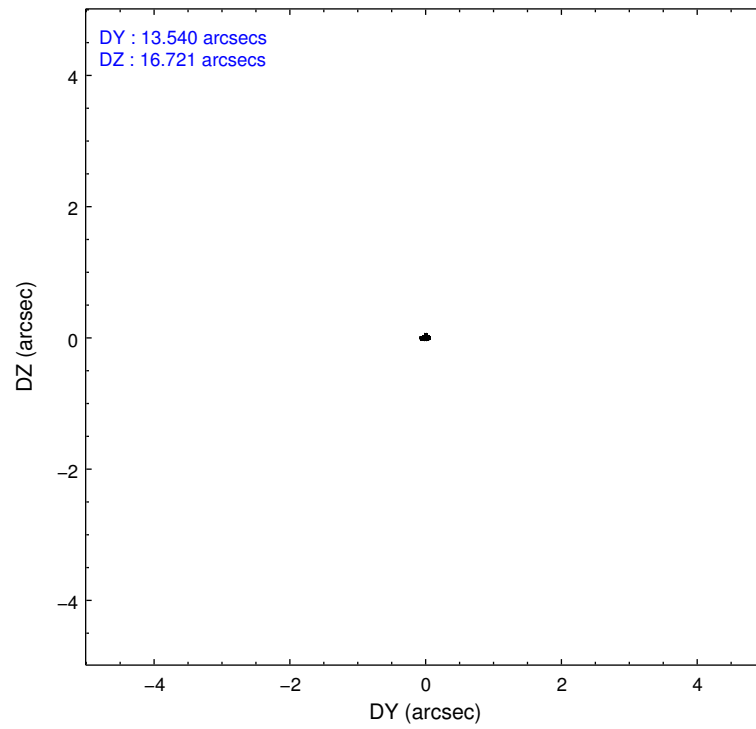
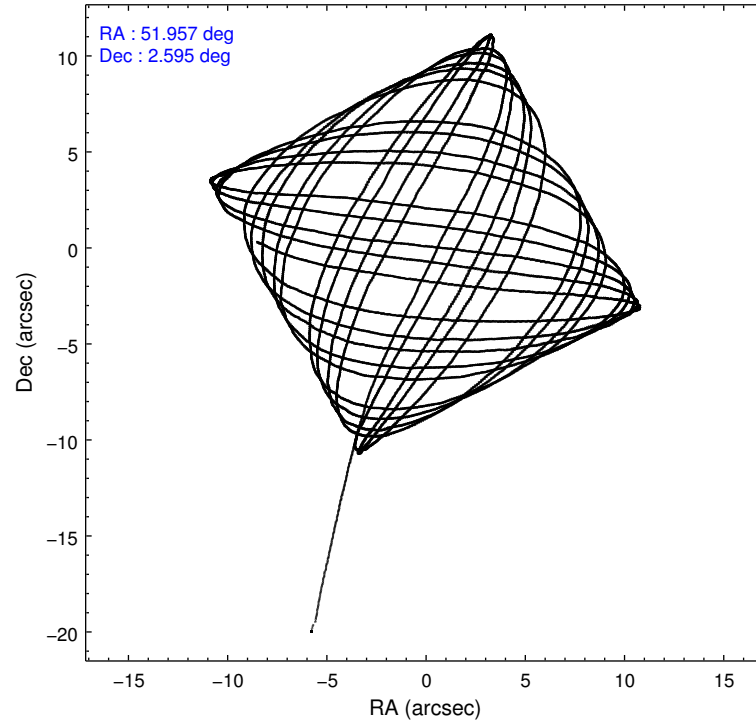
	ccd 0	ccd 1	ccd 2	ccd 3	ccd 6
level 1 events	91722	92162	100644	96106	98477
rejected events	82506	81829	91558	86393	89340
rejected %	89%	88%	90%	89%	90%

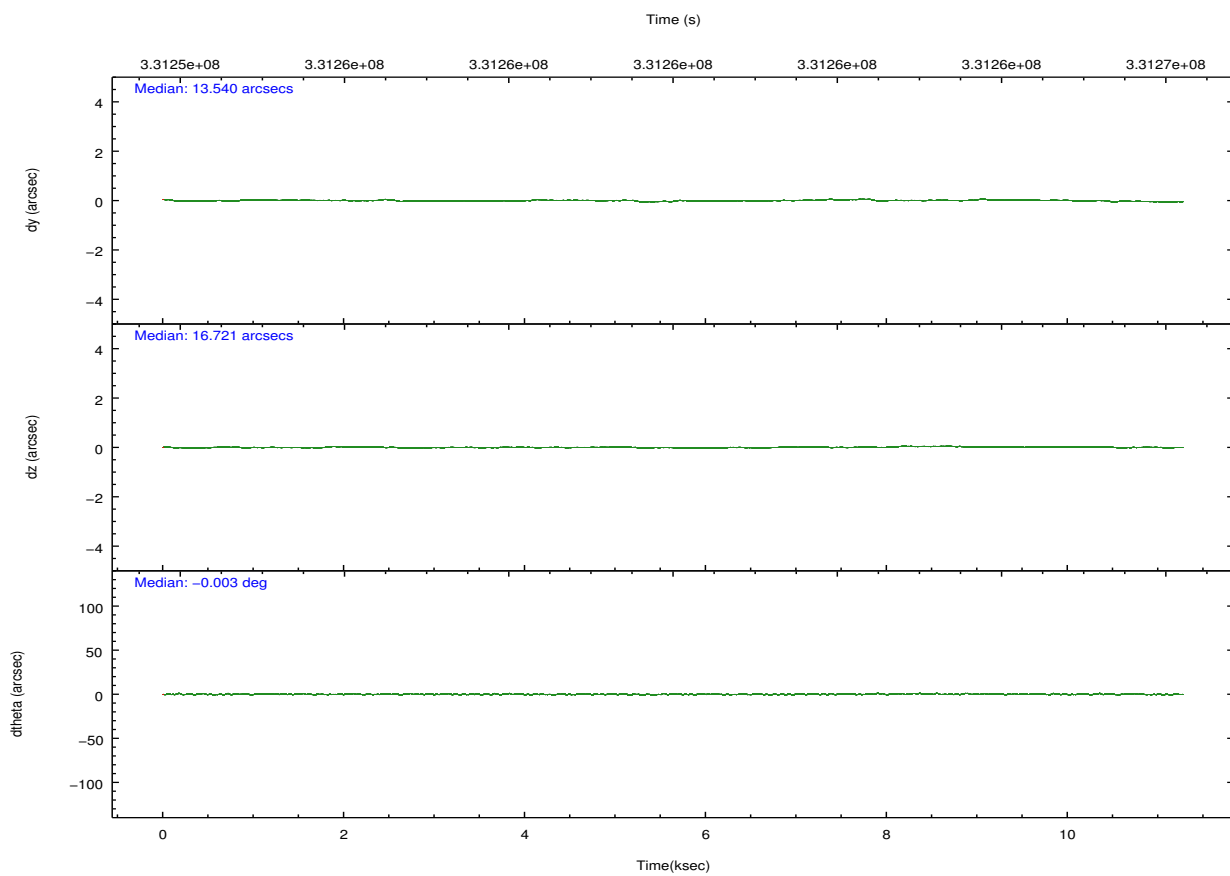
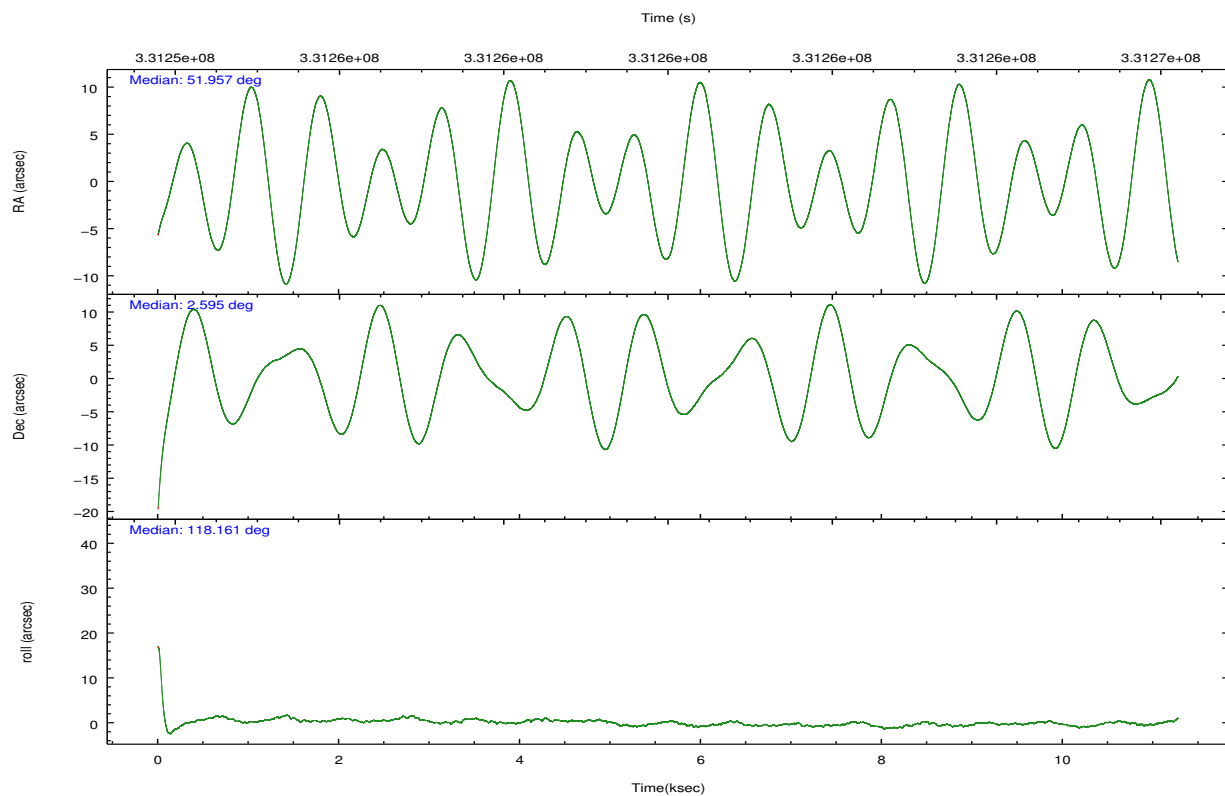
	ccd 0	ccd 1	ccd 2	ccd 3	ccd 6
grade 0 events	3487	4087	3474	4215	3393
	3%	4%	3%	4%	3%
grade 1 events	48	51	42	54	44
	0%	0%	0%	0%	0%
grade 2 events	2498	2503	2445	2060	2248
	2%	2%	2%	2%	2%
grade 3 events	1097	1181	1009	1137	1060
	1%	1%	1%	1%	1%
grade 4 events	1049	1218	1065	1118	1065
	1%	1%	1%	1%	1%
grade 5 events	3574	3768	3323	4099	3922
	3%	4%	3%	4%	3%
grade 6 events	1821	2183	1810	1920	2097
	1%	2%	1%	1%	2%
grade 7 events	78148	77171	87476	81503	84648
	85%	83%	86%	84%	85%

2.2 Compared Parameters

Parameter	Planned	Actual	Parameter	Planned	Actual
Instrument	ACIS	ACIS	Obspar format version number	7	7
Detector	ACIS-01236	ACIS-01236	Obspar file type	PREDICTED	ACTUAL
Grating	NONE	NONE	Obspar update status	NONE	UPDATED
Data mode	VFAINT	VFAINT	CCD I0 on	Y	Y
Observation mode	POINTING	POINTING	CCD I1 on	Y	Y
[deg] Pointing RA	51.980679	51.95724810391322	CCD I2 on	Y	Y
[deg] Pointing Dec	2.580815	2.595204972319536	CCD I3 on	Y	Y
[deg] Pointing Roll	117.962843	118.1726006255998	CCD S0 on	N	N
[mm] SIM focus pos	-0.782348	-0.7809083437167272	CCD S1 on	N	N
[mm] SIM defocus	0	0.001439871863259334	CCD S2 on	O1	Y
[mm] SIM translation stage pos	-228.592463	-228.6015472178352	CCD S3 on	N	N
[mm] SIM translation stage offset	-5	-4.990905785094469	CCD S4 on	N	N
[s] Observation start time (MET)	331254545.184000	331253104.41786	CCD S5 on	N	N
Observation start date	2008-06-30T23:08:00	2008-06-30T22:45:04	Number of optional ACIS chips dropped	0	0
[s] Observation end time (MET)	331265648.184000	331265873.35599	On-chip summing requested	N	N
Observation end date	2008-07-01T02:13:03	2008-07-01T02:17:53	Subarray requested	NONE	NONE
Read mode	TIMED	TIMED	Alternating exposures requested	N	N
			[s] Primary exposure time	0.000000	3.1

2.3 Aspect



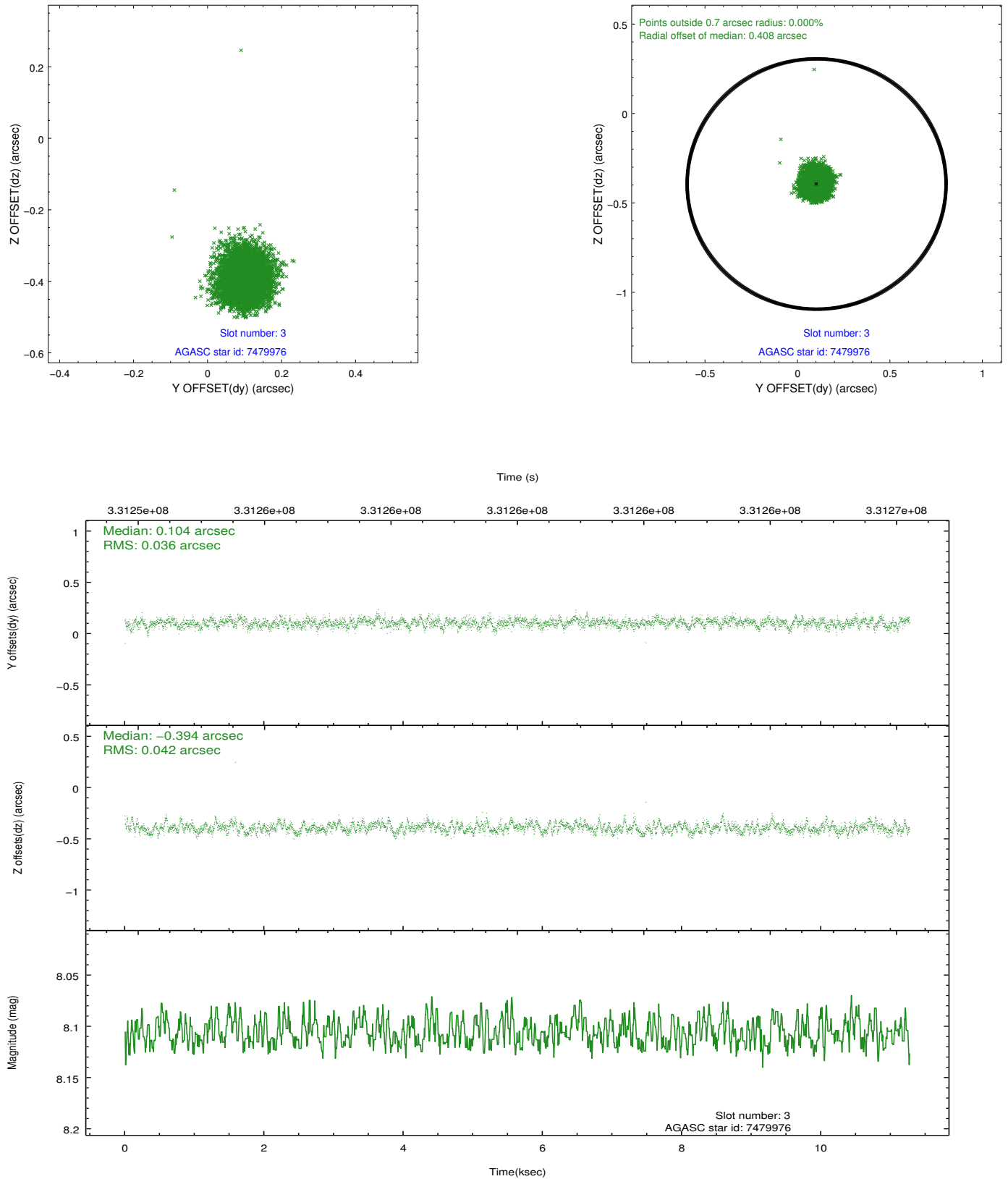


Slot Statistics

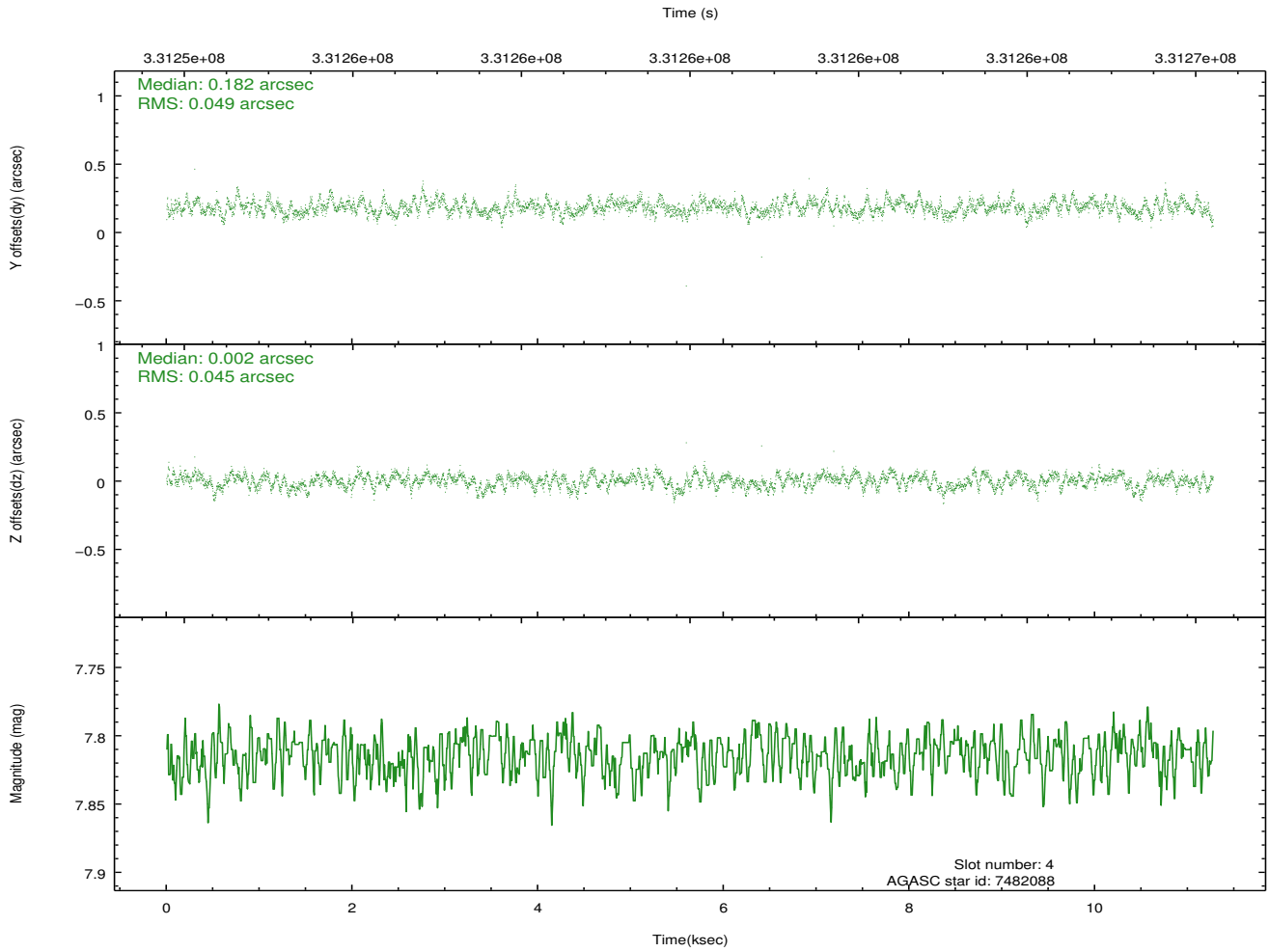
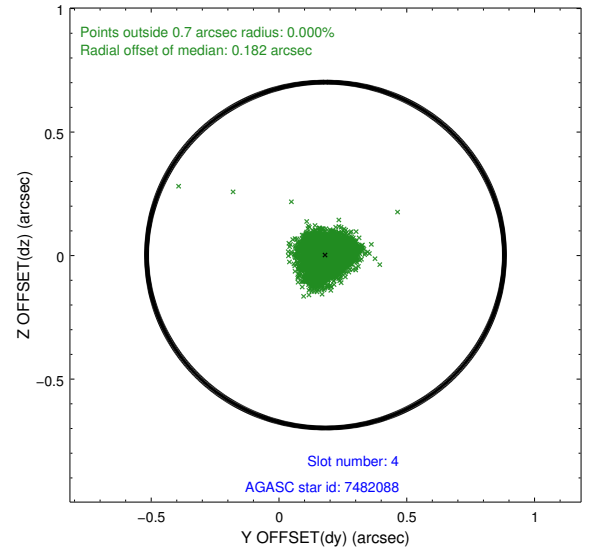
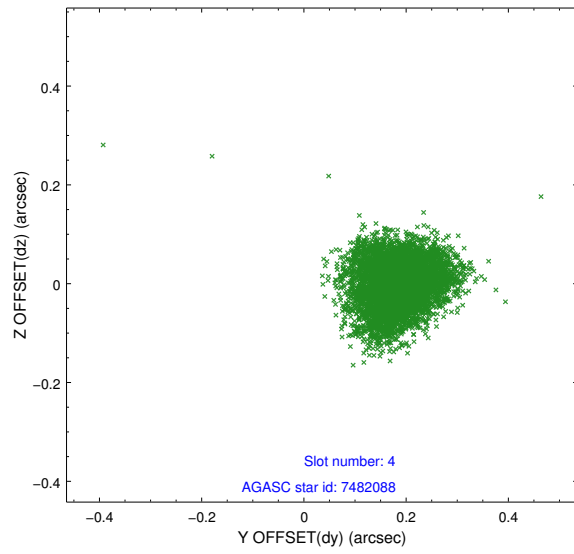
slot	status	id	mag	n_pts	med_dy	med_dz	dr1	dr2	ra	dec	mean_y	mean_z
0	FID	ACIS-I-1	6.99	2750	0.053	-0.003	0.006	0.010	0.000000	0.000000	925.93	-942.78
1	FID	ACIS-I-5	6.98	2750	-0.215	0.061	0.006	0.010	0.000000	0.000000	-1822.21	954.48
2	FID	ACIS-I-6	7.00	2750	0.070	0.013	0.006	0.010	0.000000	0.000000	390.97	1599.47
3	GUIDE	7479976	8.11	5499	0.104	-0.394	0.058	0.094	51.609520	2.169750	-680.82	1872.61
4	GUIDE	7482088	7.81	5499	0.182	0.002	0.071	0.112	51.807690	2.280173	-664.28	1057.16
5	GUIDE	7864464	9.08	5498	-0.026	0.051	0.098	0.156	51.892106	3.187870	2079.56	-742.91
6	GUIDE	7867360	9.14	5492	-0.037	0.177	0.091	0.146	51.860417	2.901354	1222.67	-158.91
7	GUIDE	7877328	6.41	5499	-0.228	0.168	0.071	0.120	52.265852	3.248706	1643.96	-2032.40

2.4 Star Slots

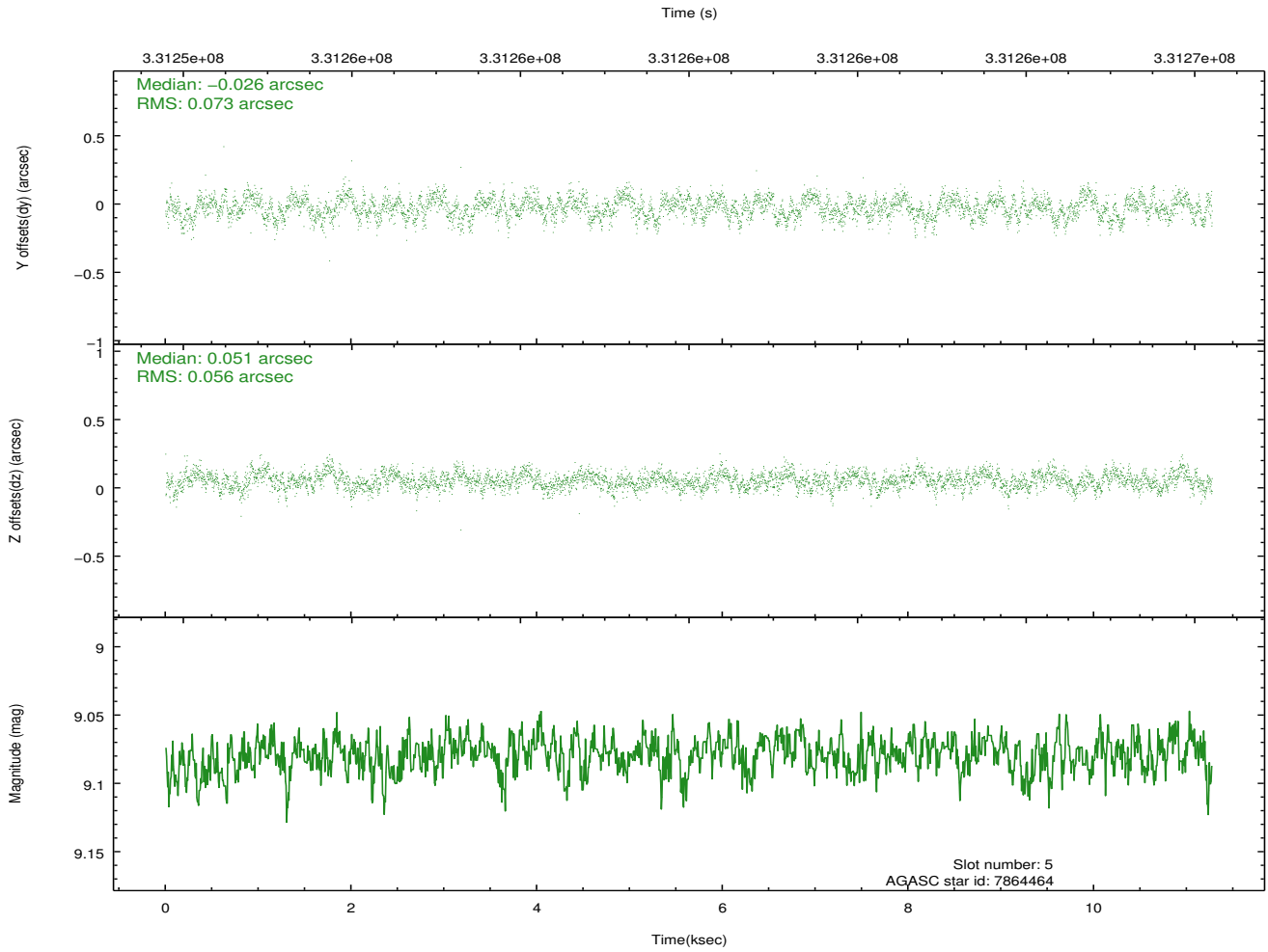
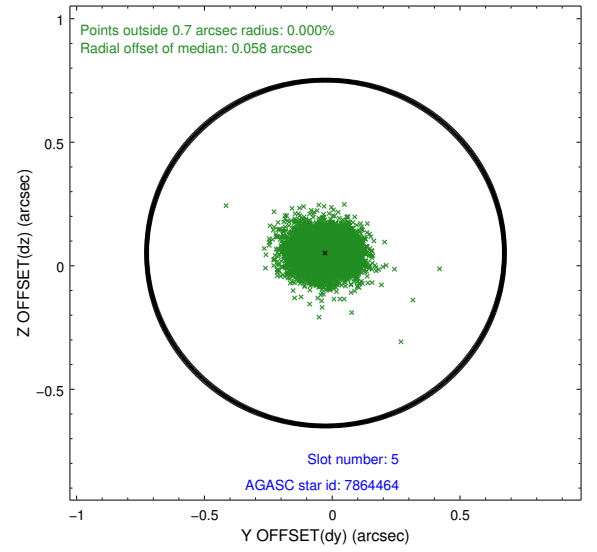
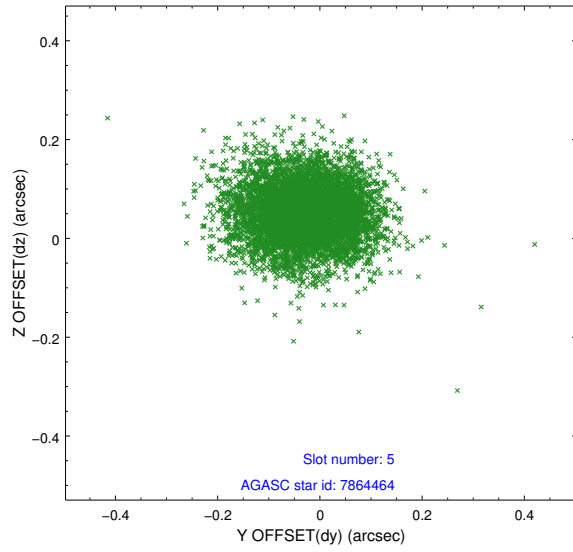
2.4.1 Slot 3



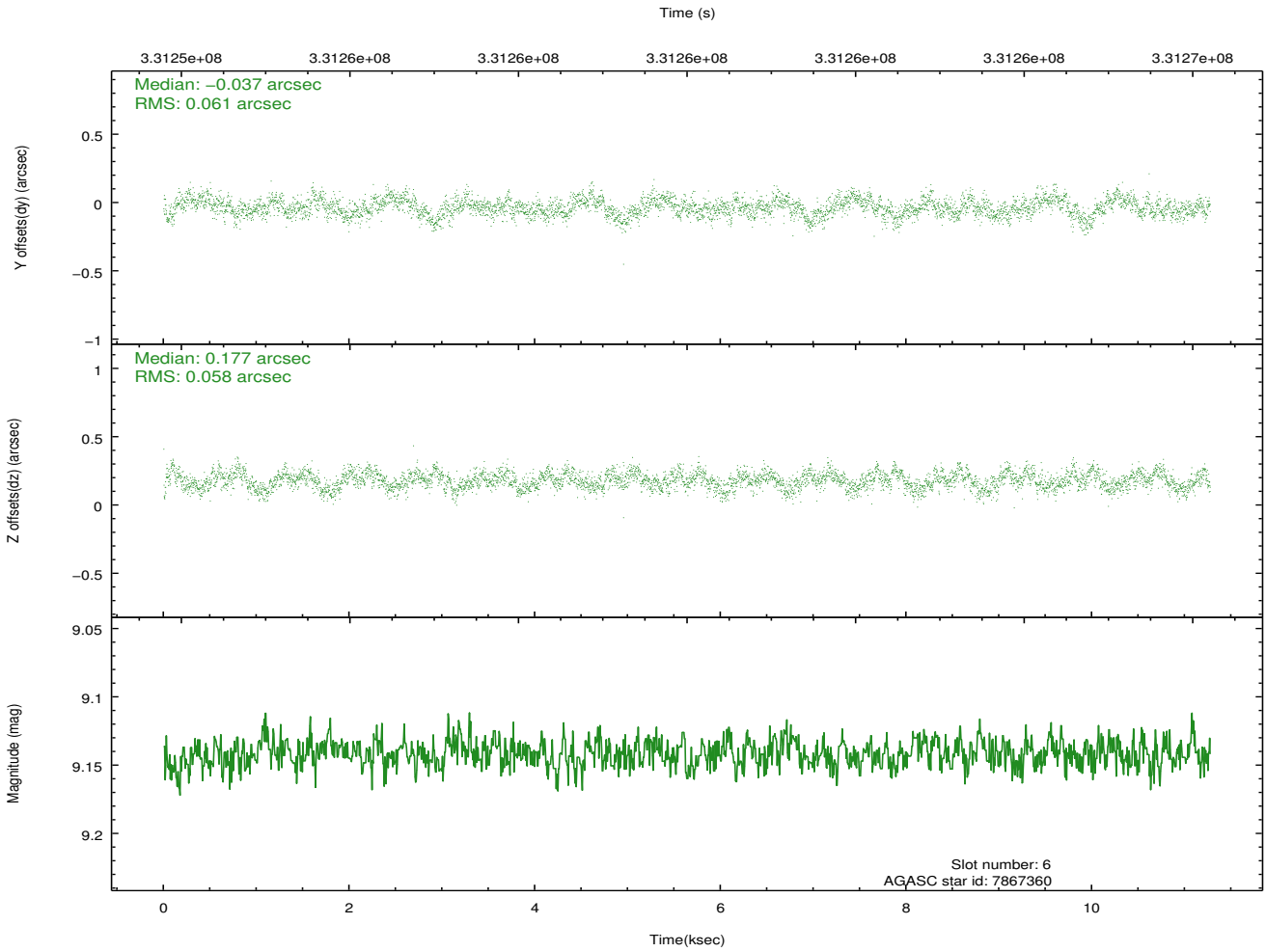
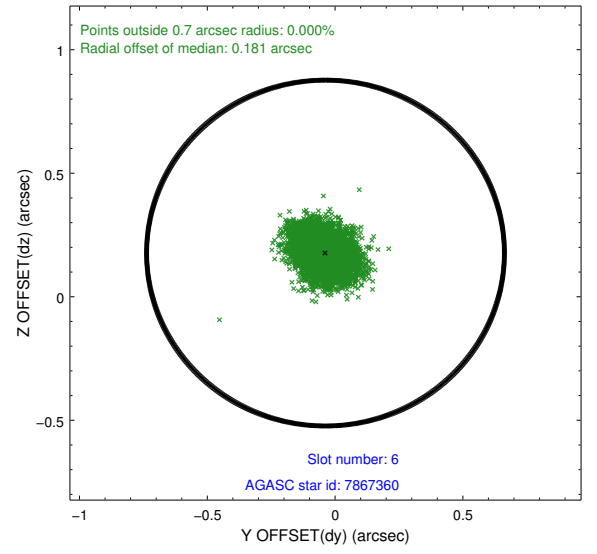
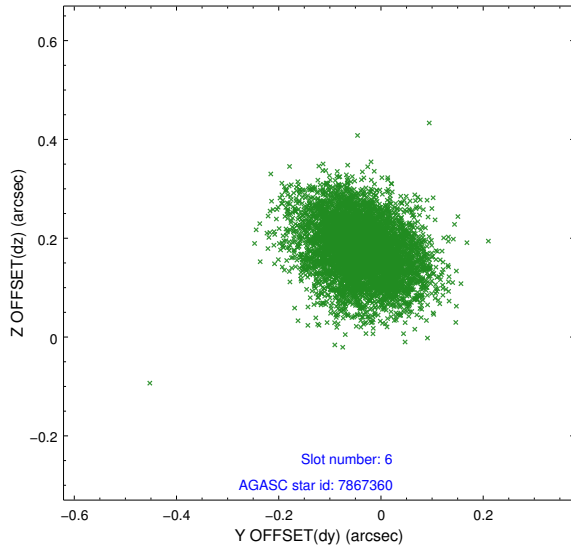
2.4.2 Slot 4



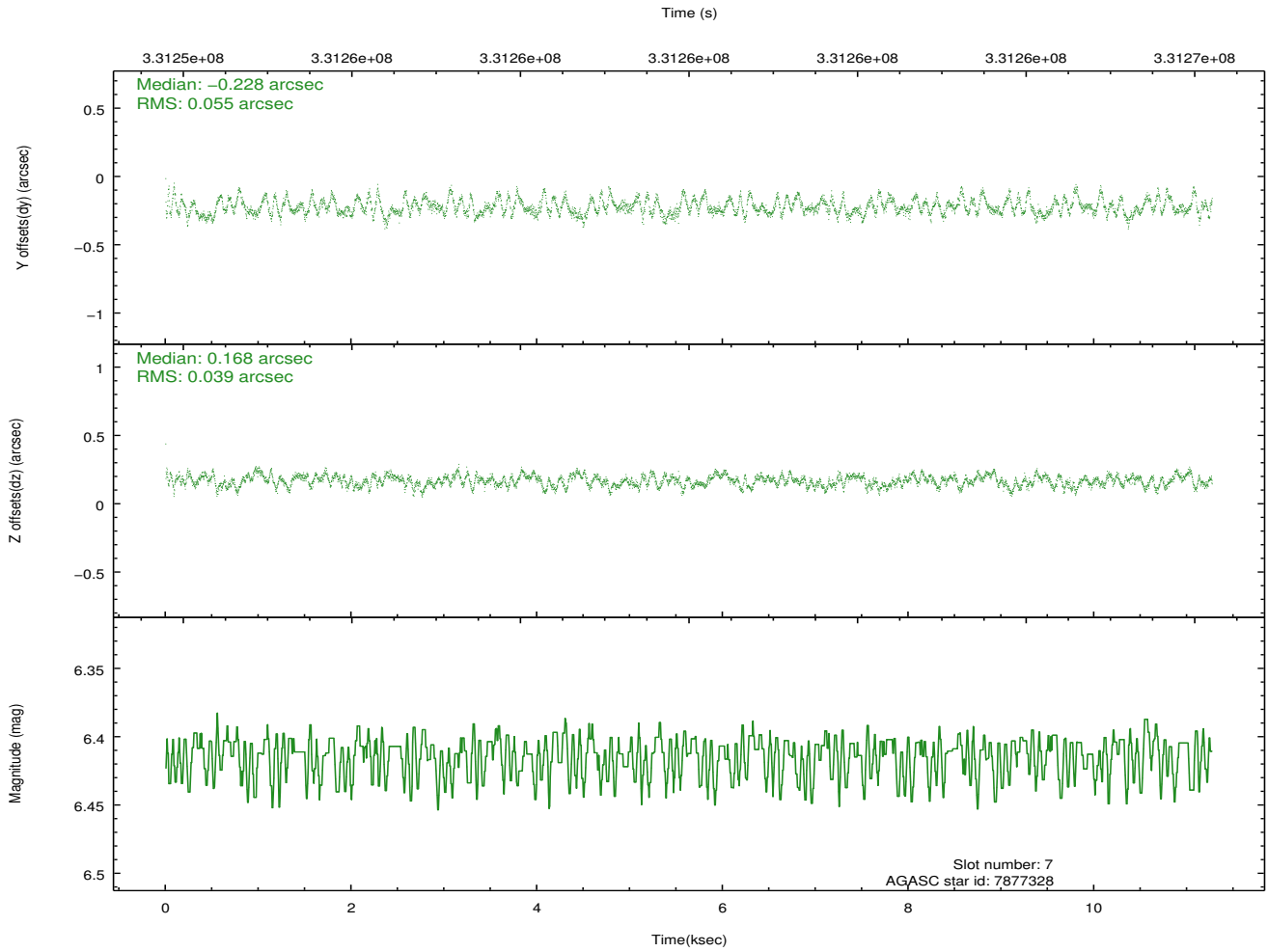
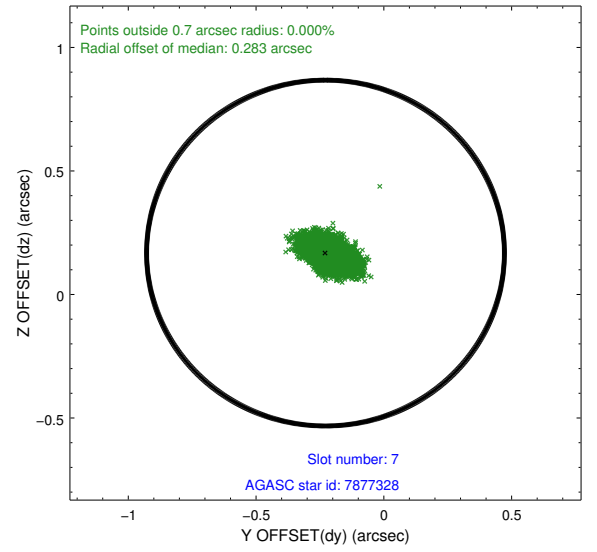
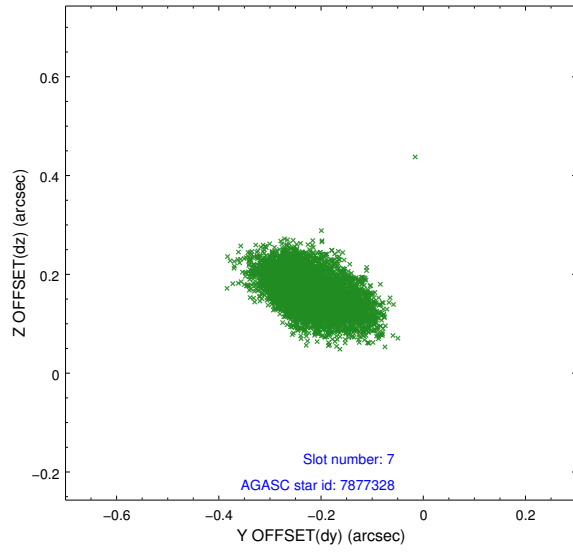
2.4.3 Slot 5



2.4.4 Slot 6

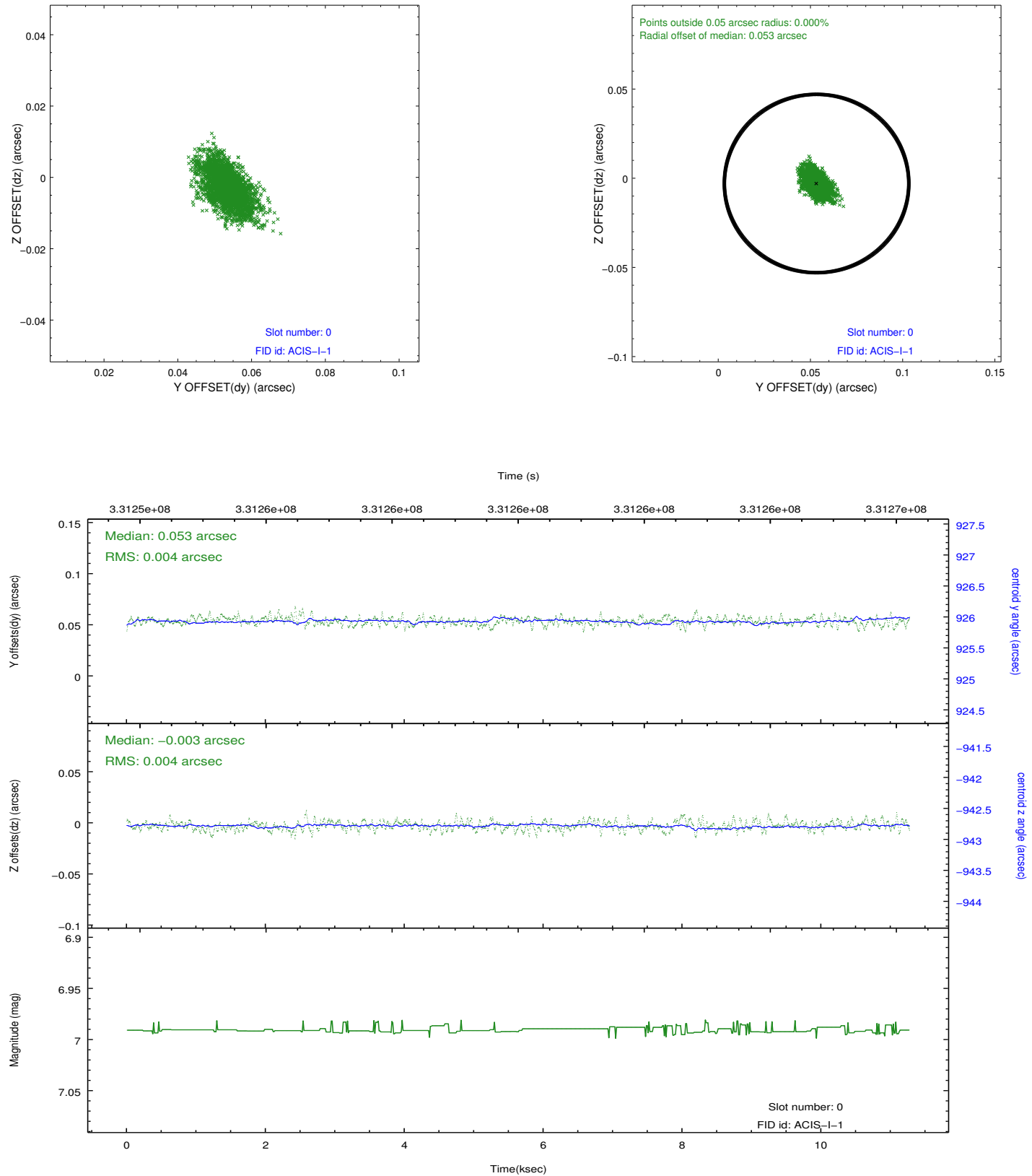


2.4.5 Slot 7

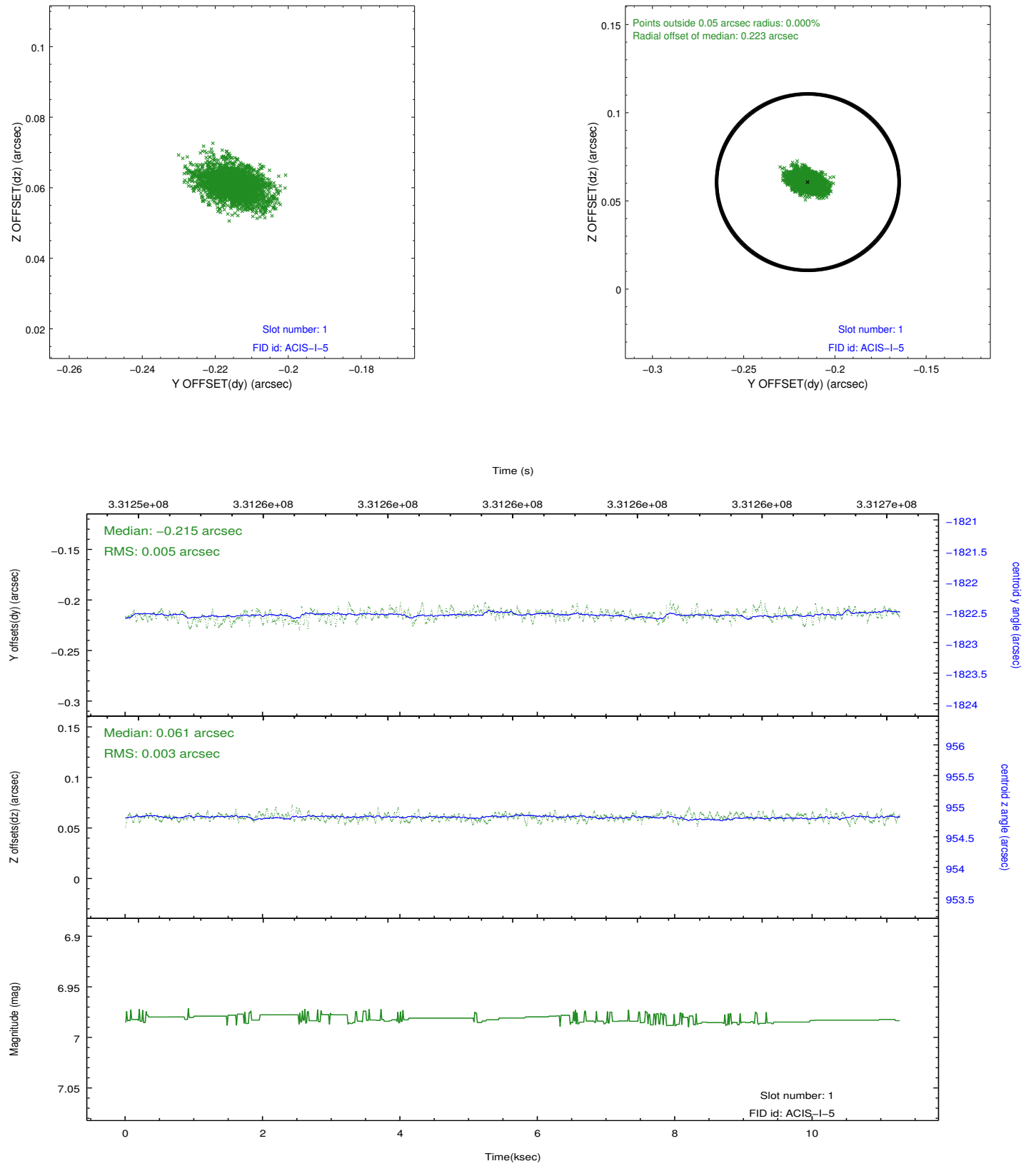


2.5 FID Slots

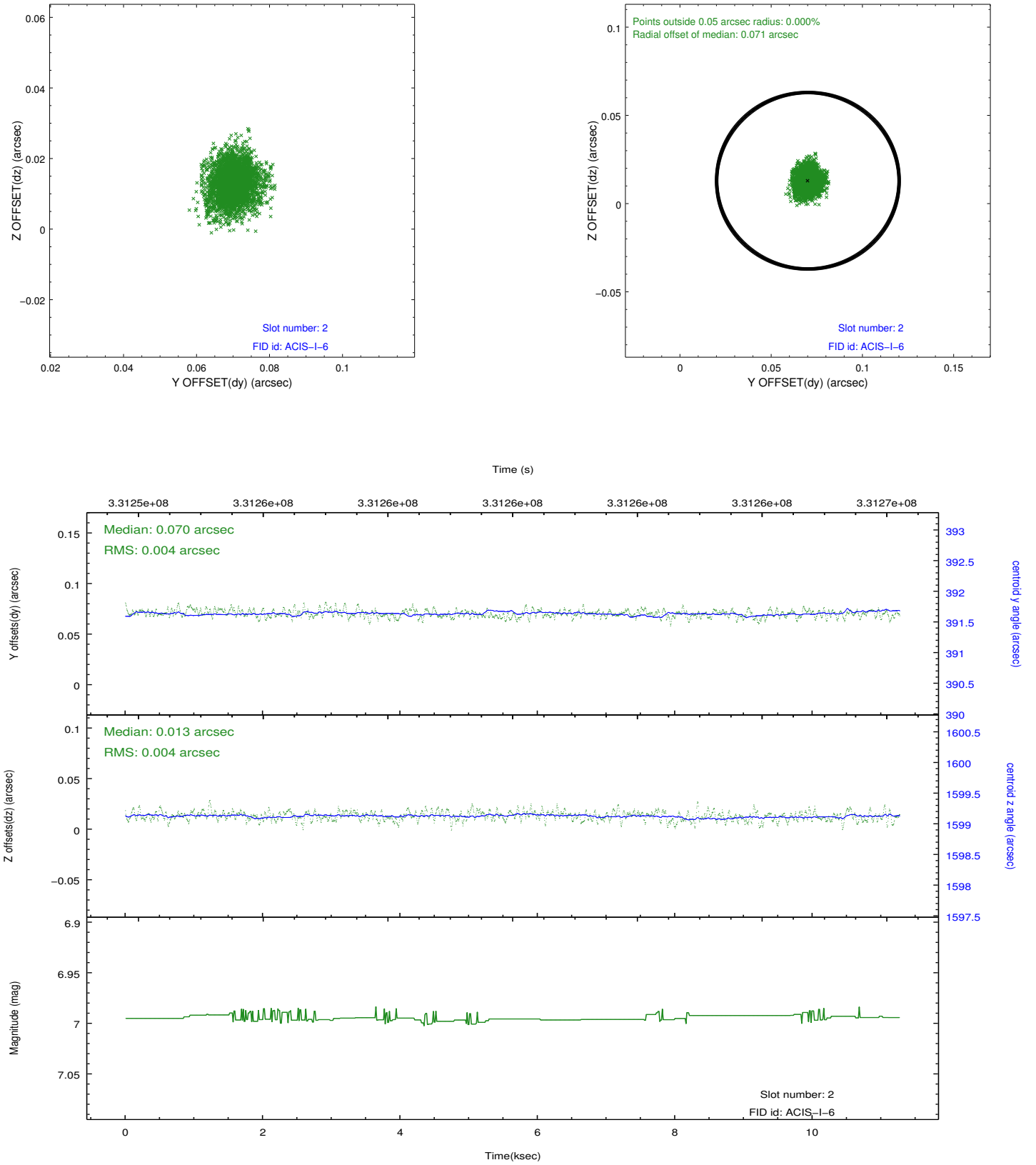
2.5.1 Slot 0



2.5.2 Slot 1



2.5.3 Slot 2



A Summary

A.1 Status

V&V Scientist	Beth Sundheim
V&V Date (YYYY-MM-DD)	2012.05.23
V&V Edition	1
V&V Disposition and Status	OK
V&V Charge Time	11.2685

A.2 Comments