

V&V Reference Report

L2 ASCDS Version : 8.4.4

Observation 9390 - L2 Version 2
Chandra X-Ray Center

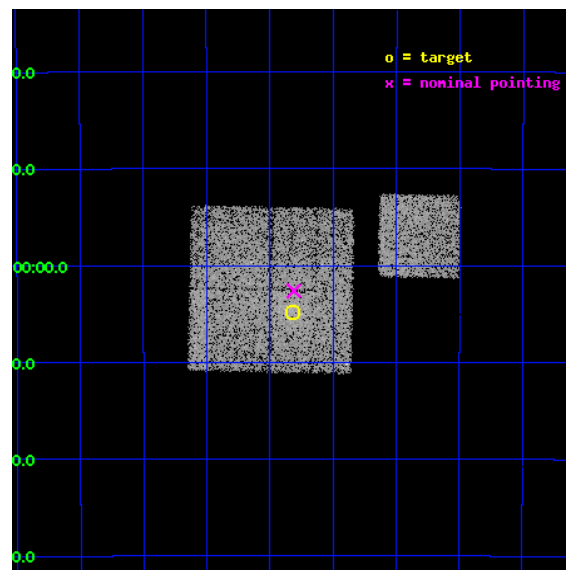
L2 Processing Date : May 19 2012

Contents

1	Front	2
2	OBI	3
2.1	OBI	3
2.1.1	Images	3
2.1.2	Bias	3
2.1.3	Parameters	4
2.1.4	Events	4
2.2	Compared Parameters	5
2.3	Aspect	6
2.4	Star Slots	9
2.4.1	Slot 3	9
2.4.2	Slot 4	10
2.4.3	Slot 5	11
2.4.4	Slot 6	12
2.4.5	Slot 7	13
2.5	FID Slots	14
2.5.1	Slot 0	14
2.5.2	Slot 1	15
2.5.3	Slot 2	16
A	Summary	17
A.1	Status	17
A.2	Comments	17

1 Front

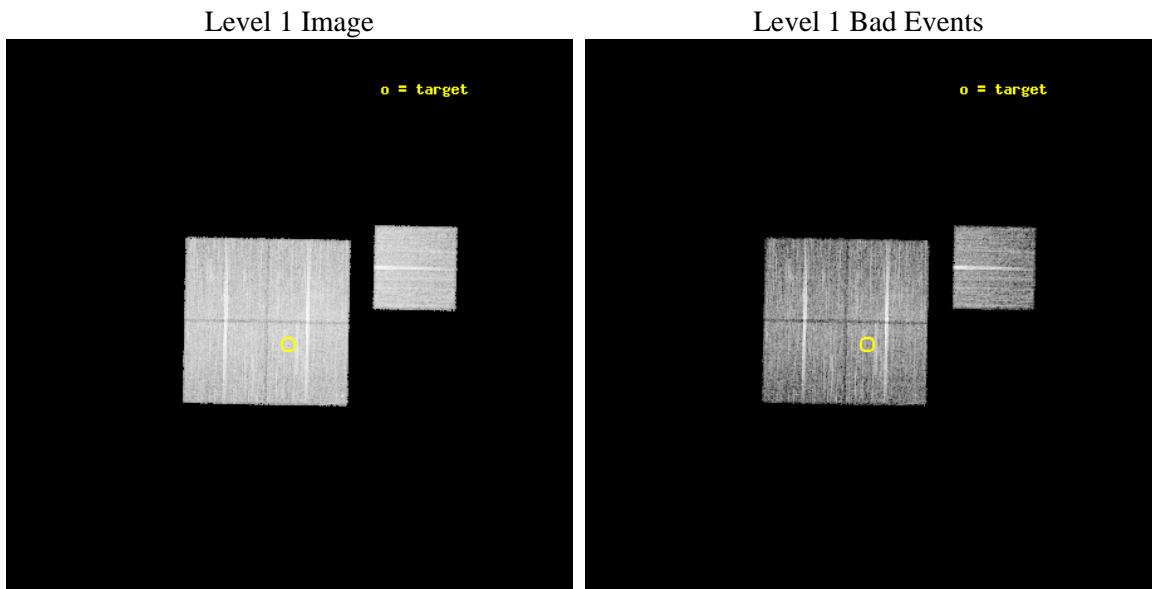
seq_num	800727	Sequence number
obs_id	9390	Observation id
title	SCALING RELATIONS FOR LOW-MASS GALAXY CLUSTERS AND GROUPS	Proposal
observer	Dr. Alexey Vikhlinin	Principal investigator
object	cl0336-2804	Source name
dtcycle	0	
cycle	P	events from which exps? Prim/Second/Both
ra_targ	54.205833	Observer's specified target RA [deg]
dec_targ	-28.081389	Observer's specified target Dec [deg]
ra_nom	54.202367928474	Nominal RA [deg]
dec_nom	-28.043709225852	Nominal Dec [deg]
roll_nom	91.134187128873	Nominal Roll [deg]
revision	2	Processing version of data
ontime	10771.636189818	Sum of GTIs [s]
livetime	10630.896833035	Livetime [s]
ontime0	10771.513049901	Sum of GTIs [s]
ontime1	10771.554109812	Sum of GTIs [s]
ontime2	10771.595149815	Sum of GTIs [s]
ontime3	10771.636189818	Sum of GTIs [s]
ontime6	10768.331029594	Sum of GTIs [s]
l2events	39267	Number of level 2 events



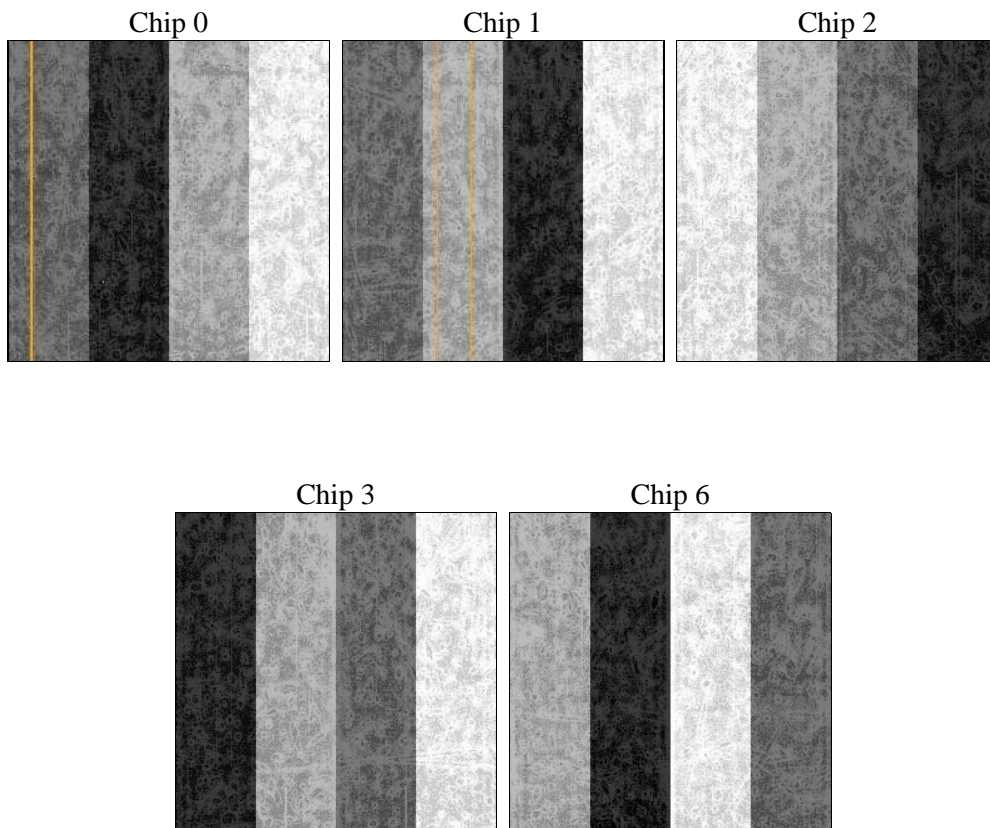
2 OBI

2.1 OBI

2.1.1 Images



2.1.2 Bias



2.1.3 Parameters

obi_num	1	Obi number	sched_exp_time	11000.000000	[s] Scheduled observation exposure time
ascdsver	8.4.4	Processing system revision	ontime	10771.636189818	Sum of GTIs [s]
caldsver	4.4.9	 	ontime0	10771.513049901	Sum of GTIs [s]
date	2012-05-19T22:53:56	Date and time of file creation	ontime1	10771.554109812	Sum of GTIs [s]
revision	2	Processing version of data	ontime2	10771.595149815	Sum of GTIs [s]
			ontime3	10771.636189818	Sum of GTIs [s]
			ontime6	10768.331029594	Sum of GTIs [s]
			l1events	439791	Number of level 1 events

2.1.4 Events

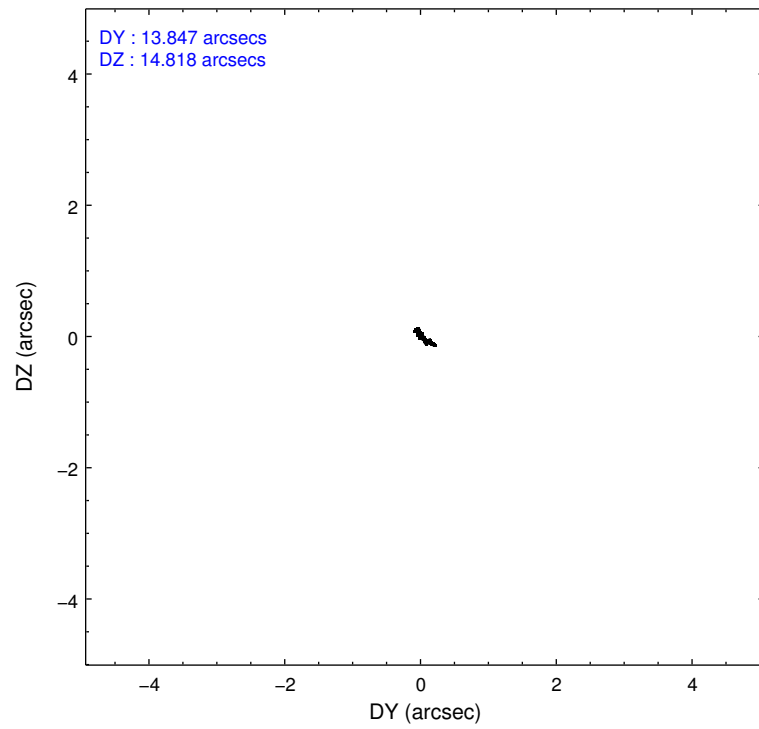
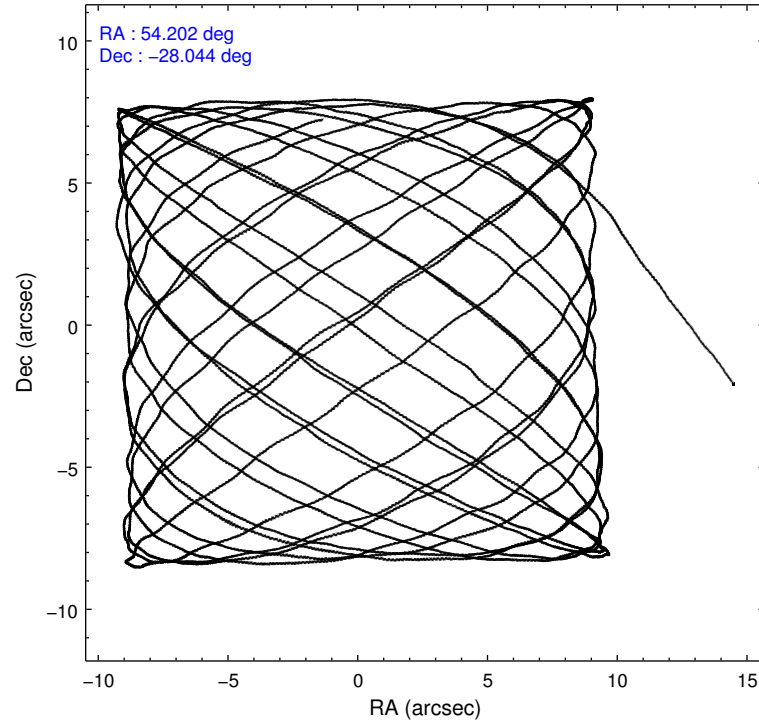
	ccd 0	ccd 1	ccd 2	ccd 3	ccd 6
level 1 events	84593	82807	94870	88598	88923
rejected events	75414	72809	85896	78937	79818
rejected %	89%	87%	90%	89%	89%

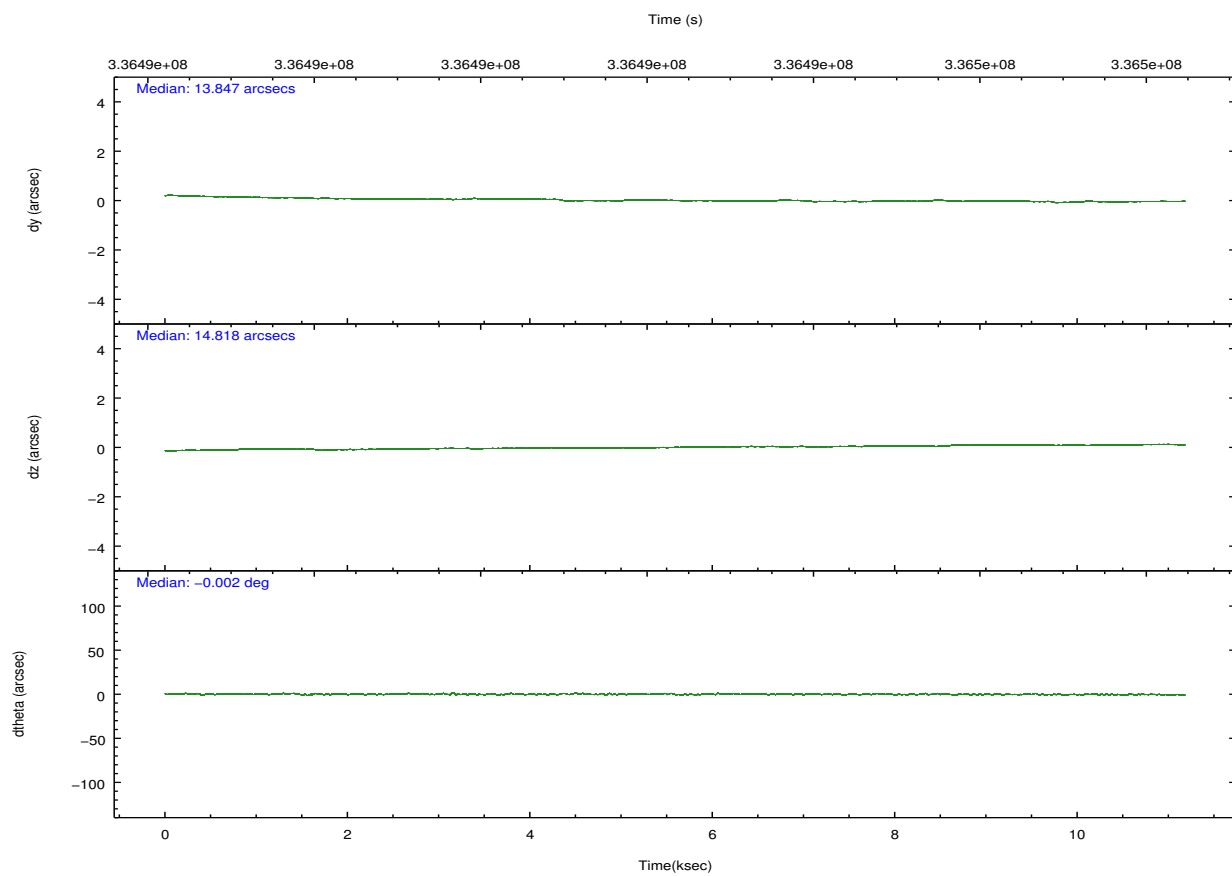
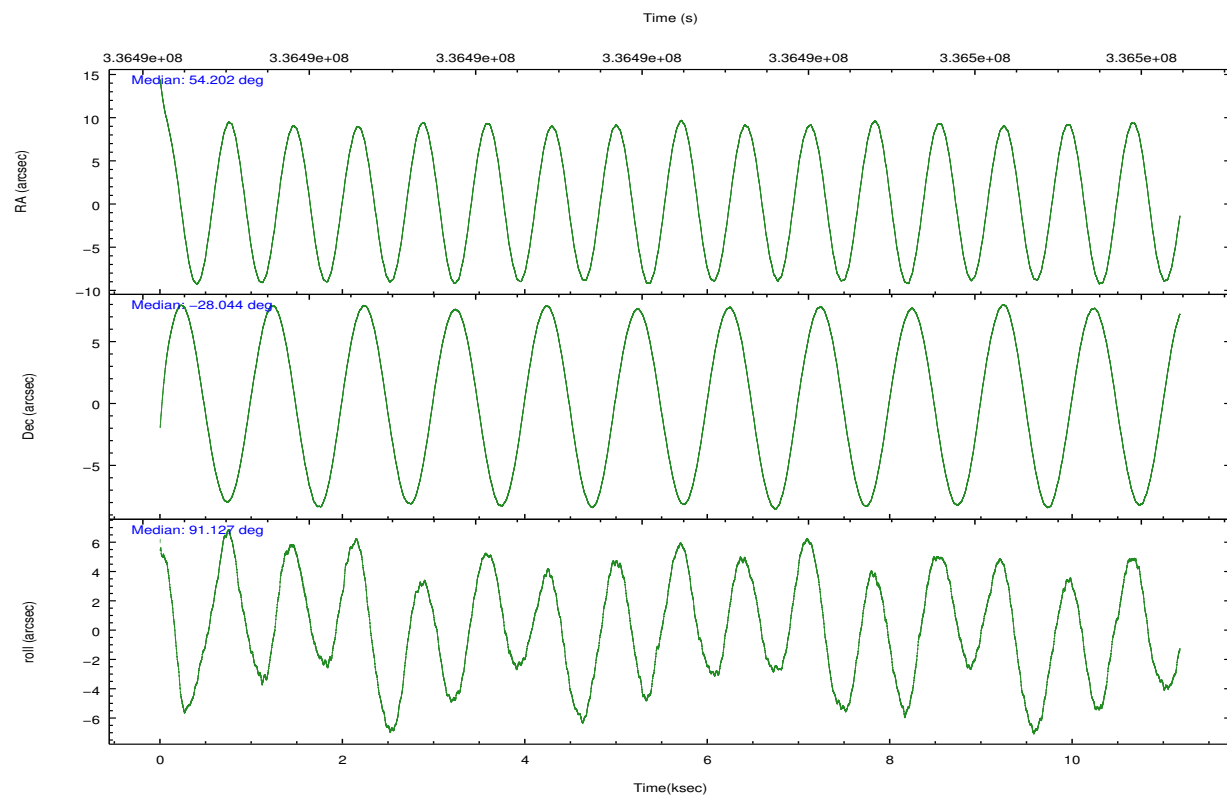
	ccd 0	ccd 1	ccd 2	ccd 3	ccd 6
grade 0 events	3371	3560	3285	3987	3175
	3%	4%	3%	4%	3%
grade 1 events	44	46	56	56	41
	0%	0%	0%	0%	0%
grade 2 events	2179	2307	2205	2038	2041
	2%	2%	2%	2%	2%
grade 3 events	974	1031	890	957	1002
	1%	1%	0%	1%	1%
grade 4 events	970	1116	971	892	1017
	1%	1%	1%	1%	1%
grade 5 events	3191	3550	3057	3722	3578
	3%	4%	3%	4%	4%
grade 6 events	1694	1989	1631	1794	1875
	2%	2%	1%	2%	2%
grade 7 events	72170	69208	82775	75152	76194
	85%	83%	87%	84%	85%

2.2 Compared Parameters

Parameter	Planned	Actual	Parameter	Planned	Actual
Instrument	ACIS	ACIS	Obspar format version number	7	7
Detector	ACIS-01236	ACIS-01236	Obspar file type	PREDICTED	ACTUAL
Grating	NONE	NONE	Obspar update status	NONE	UPDATED
Data mode	VFAINT	VFAINT	CCD I0 on	Y	Y
Observation mode	POINTING	POINTING	CCD I1 on	Y	Y
[deg] Pointing RA	54.218605	54.20236792847397	CCD I2 on	Y	Y
[deg] Pointing Dec	-28.067199	-28.0437092258525	CCD I3 on	Y	Y
[deg] Pointing Roll	90.933131	91.13418712887304	CCD S0 on	N	N
[mm] SIM focus pos	-0.782348	-0.7809083437167272	CCD S1 on	N	N
[mm] SIM defocus	0	0.001439871863259334	CCD S2 on	O1	Y
[mm] SIM translation stage pos	-228.592463	-228.6015472178352	CCD S3 on	N	N
[mm] SIM translation stage offset	-5	-4.990905785094469	CCD S4 on	N	N
[s] Observation start time (MET)	336486934.184000	336486115.35912	CCD S5 on	N	N
Observation start date	2008-08-30T12:34:29	2008-08-30T12:21:55	Number of optional ACIS chips dropped	0	0
[s] Observation end time (MET)	336497934.184000	336498479.42223	On-chip summing requested	N	N
Observation end date	2008-08-30T15:37:49	2008-08-30T15:47:59	Subarray requested	NONE	NONE
Read mode	TIMED	TIMED	Alternating exposures requested	N	N
			[s] Primary exposure time	0.000000	3.1

2.3 Aspect



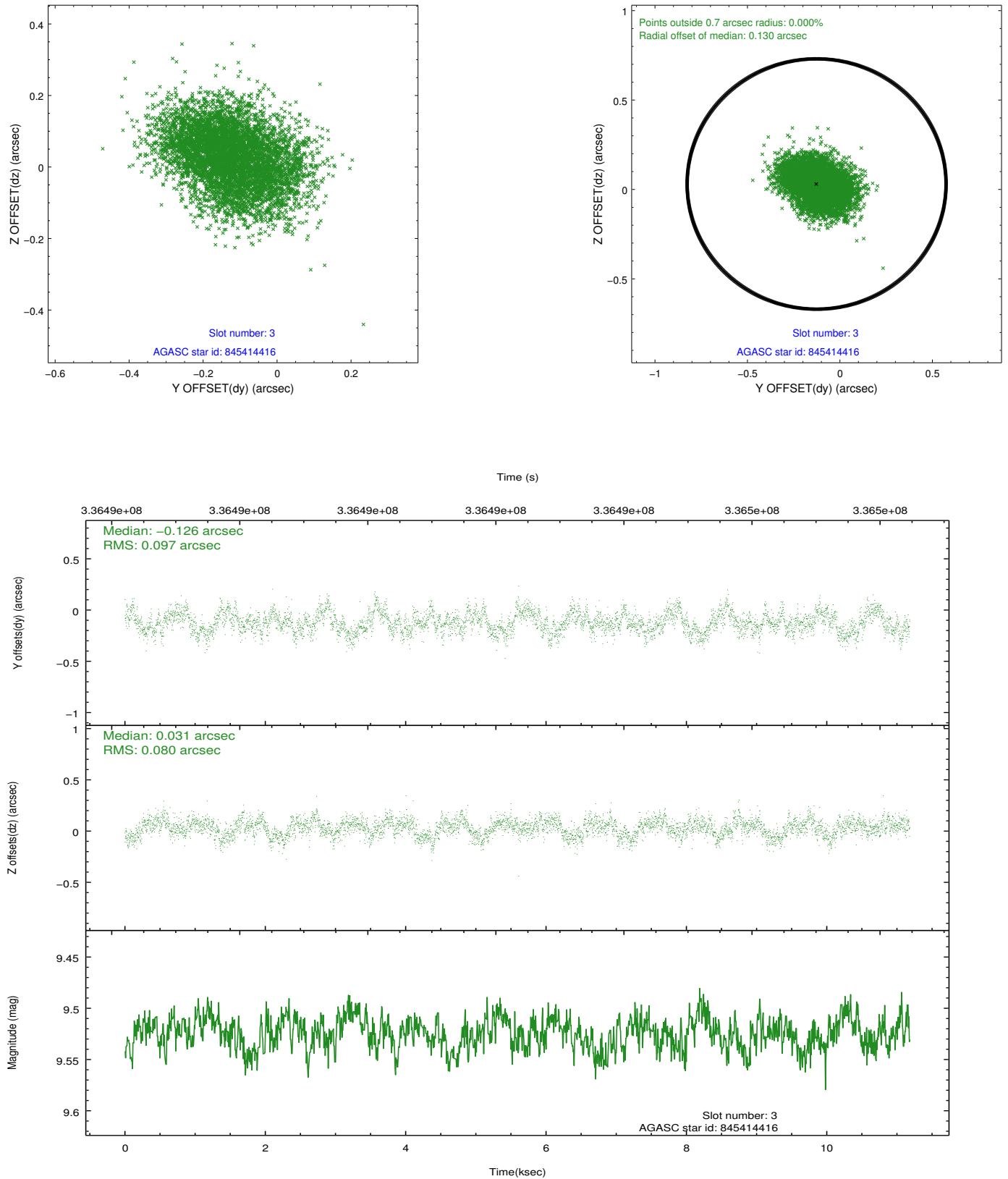


Slot Statistics

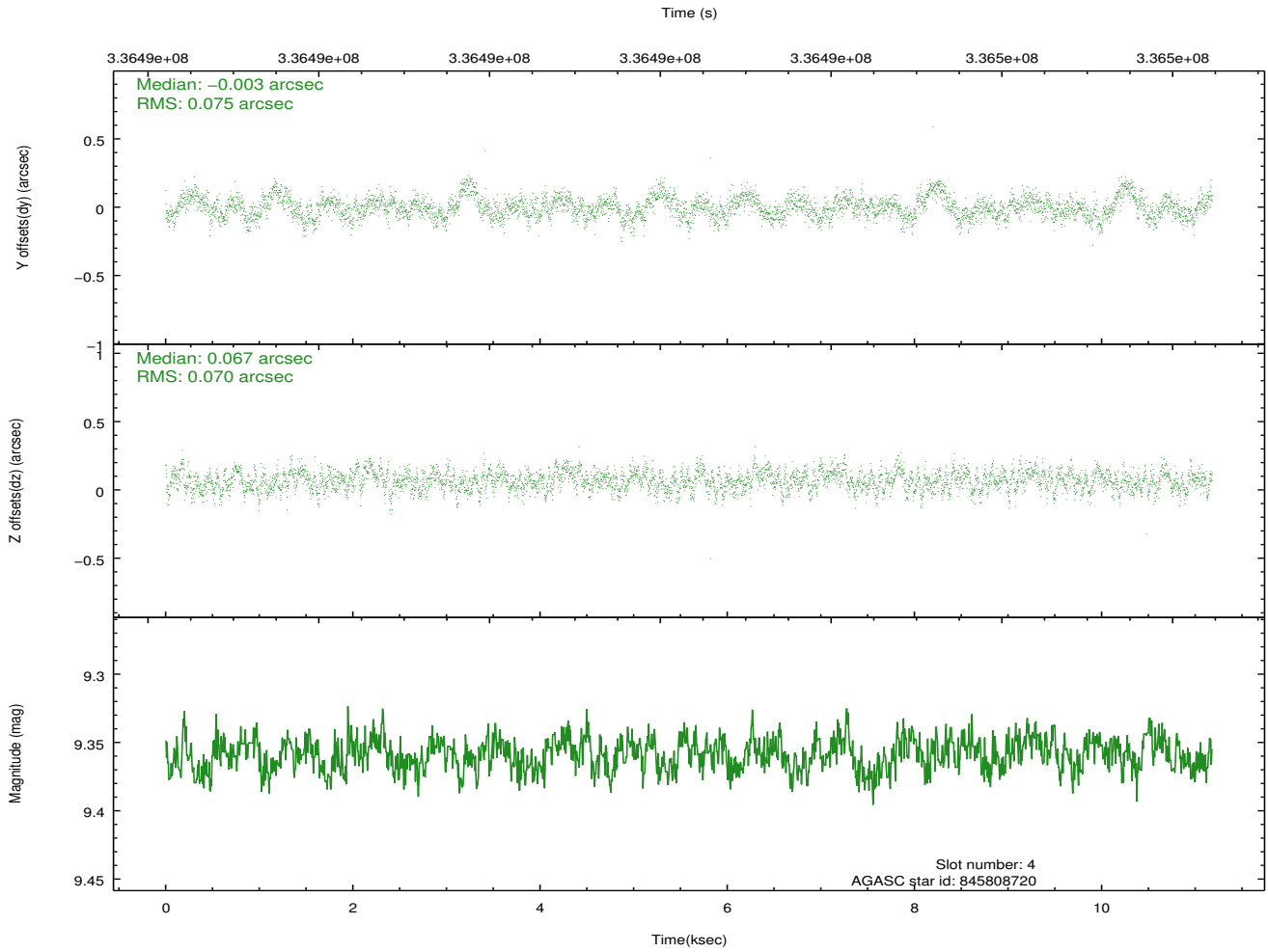
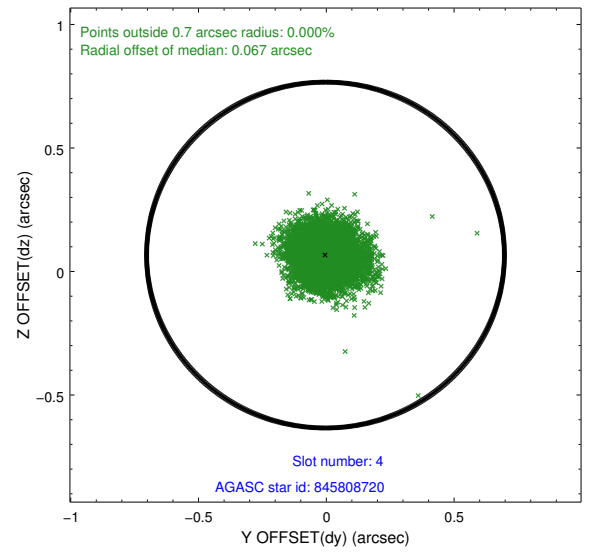
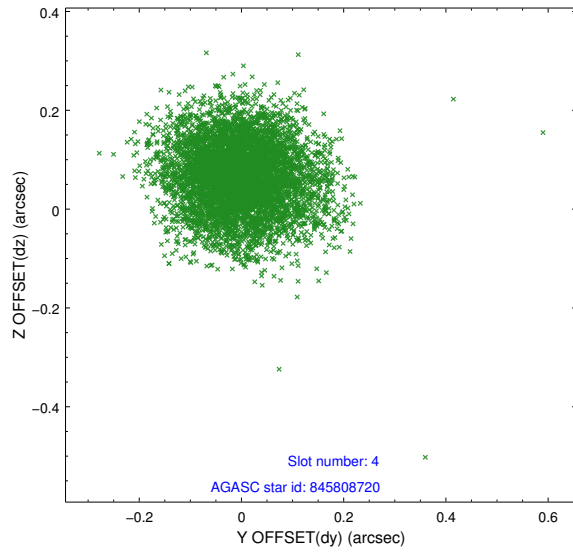
slot	status	id	mag	n_pts	med_dy	med_dz	dr1	dr2	ra	dec	mean_y	mean_z
0	FID	ACIS-I-1	7.09	2726	0.114	-0.058	0.007	0.013	0.000000	0.000000	925.64	-940.89
1	FID	ACIS-I-5	7.06	2726	-0.273	0.100	0.007	0.012	0.000000	0.000000	-1822.60	956.49
2	FID	ACIS-I-6	7.08	2726	0.068	0.028	0.006	0.011	0.000000	0.000000	390.64	1601.44
3	GUIDE	845414416	9.52	5441	-0.126	0.031	0.134	0.213	54.588168	-27.488950	2060.69	-1213.46
4	GUIDE	845808720	9.36	5443	-0.003	0.067	0.109	0.174	54.813684	-27.679042	1361.73	-1919.81
5	GUIDE	845809712	8.19	5454	0.009	-0.029	0.078	0.124	54.765639	-28.019852	138.99	-1741.34
6	GUIDE	845812240	7.11	5455	0.026	0.039	0.066	0.105	54.972671	-28.511492	-1645.95	-2359.05
7	GUIDE	845814592	9.02	5451	0.091	-0.108	0.088	0.138	53.853010	-28.336603	-953.94	1172.56

2.4 Star Slots

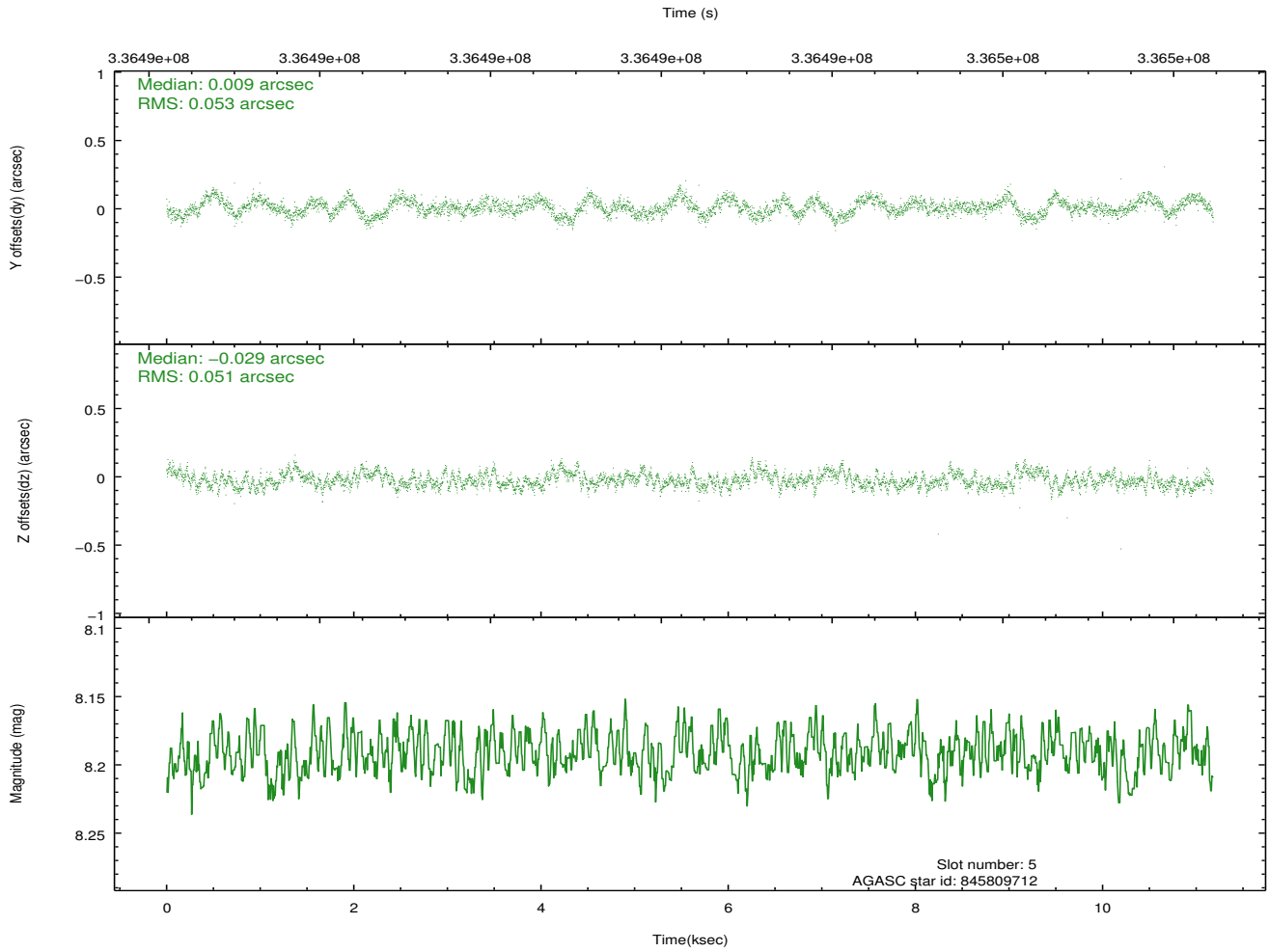
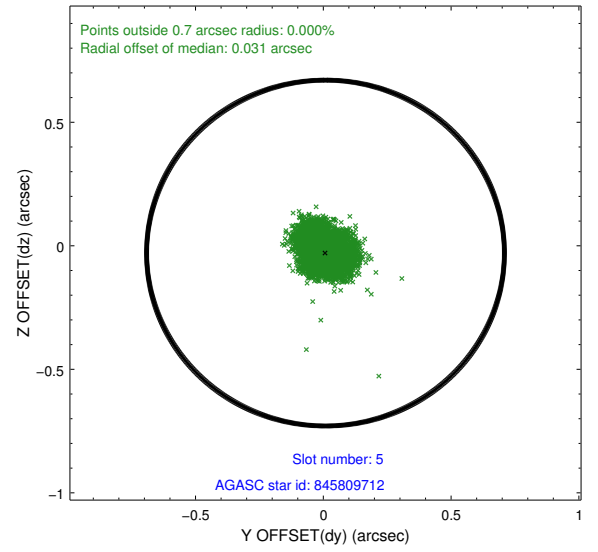
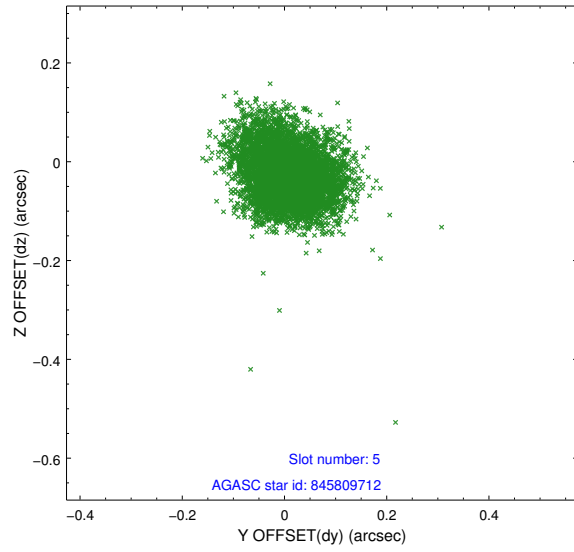
2.4.1 Slot 3



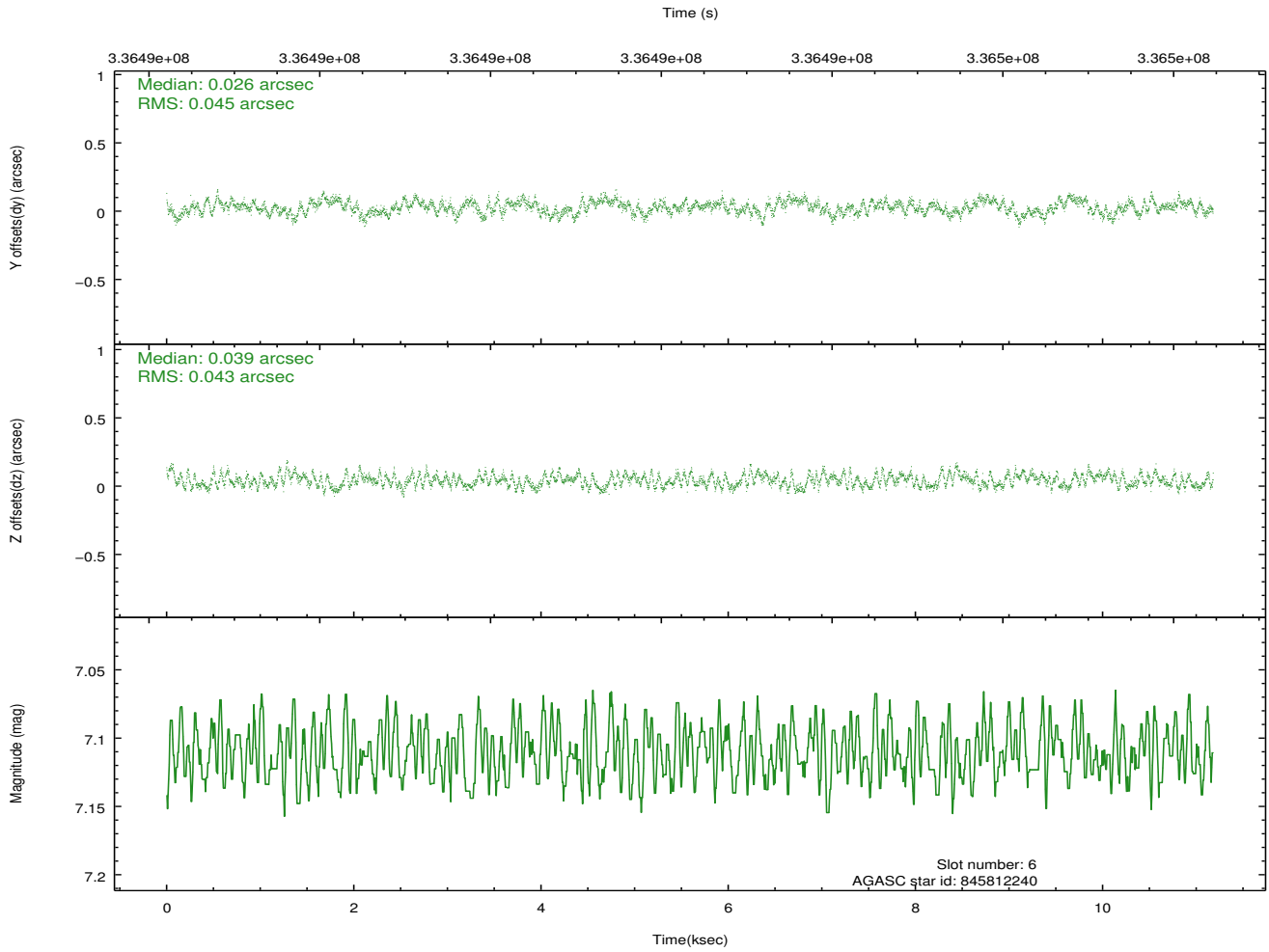
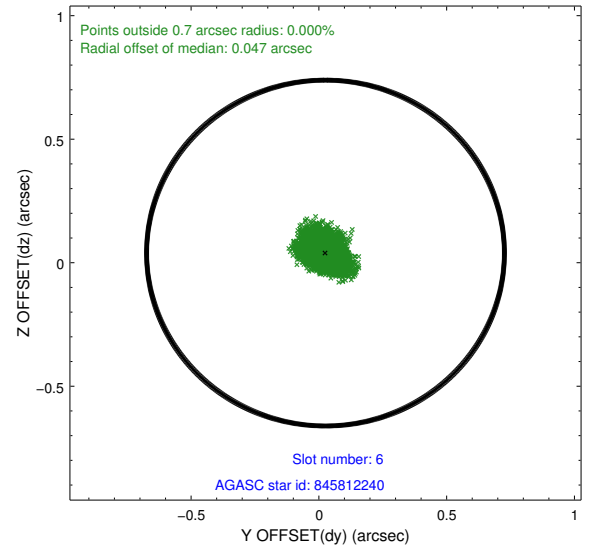
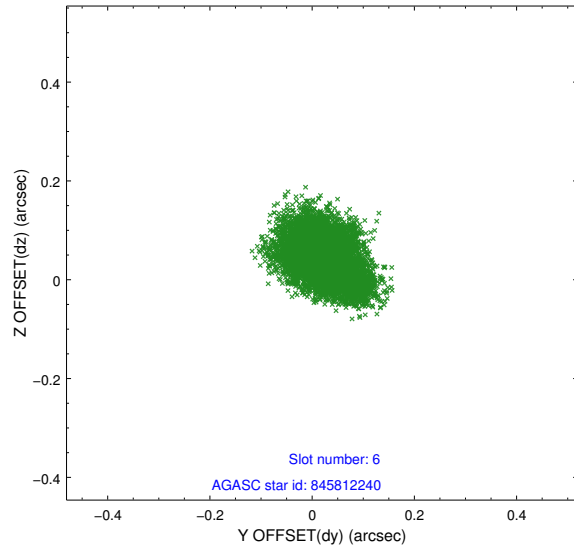
2.4.2 Slot 4



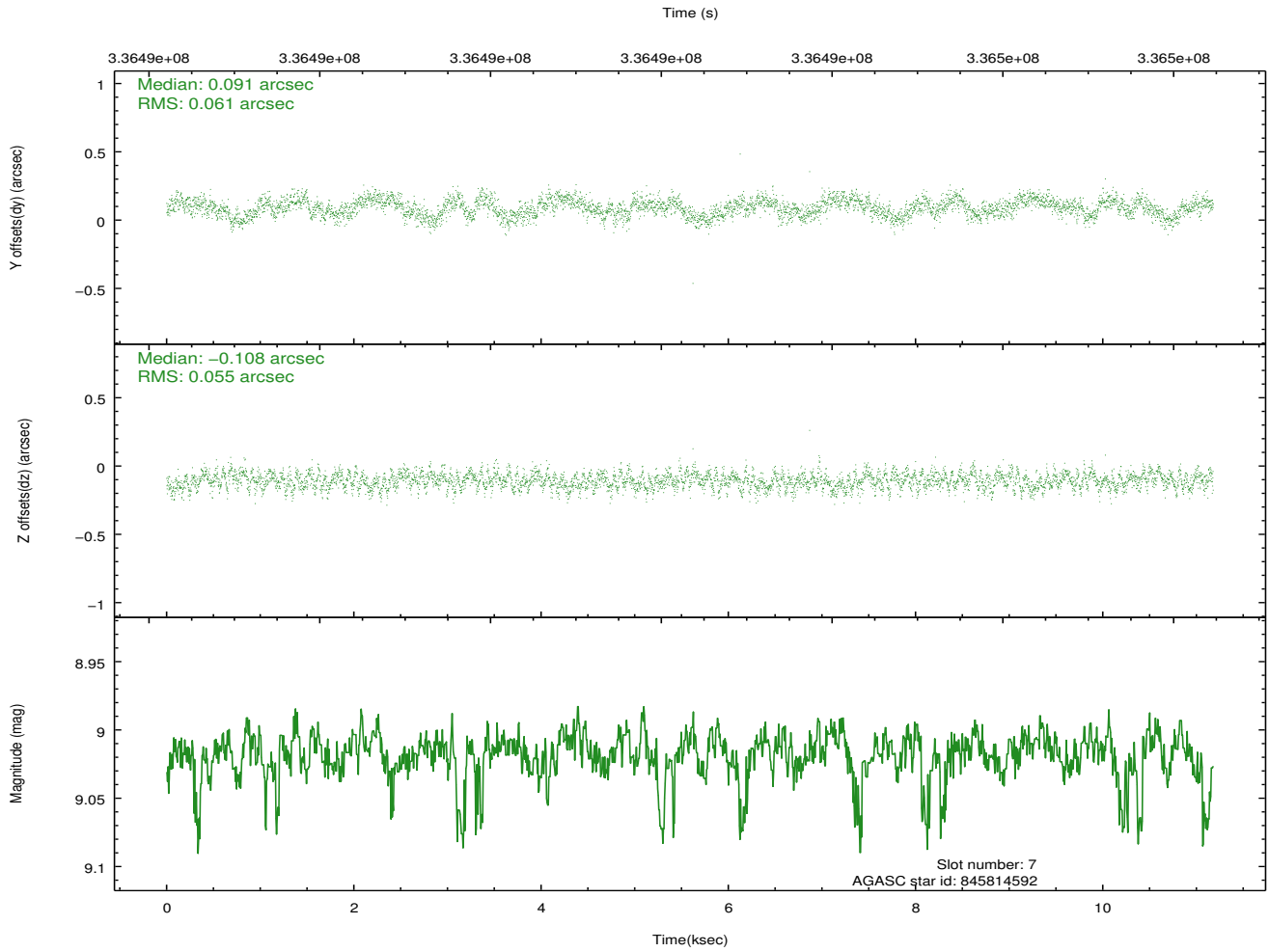
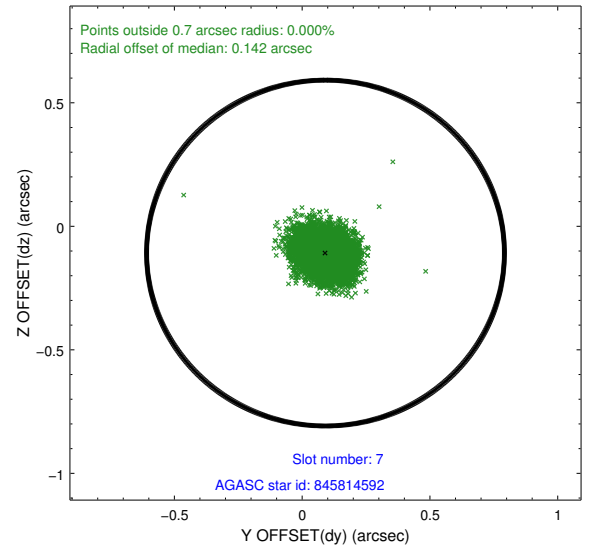
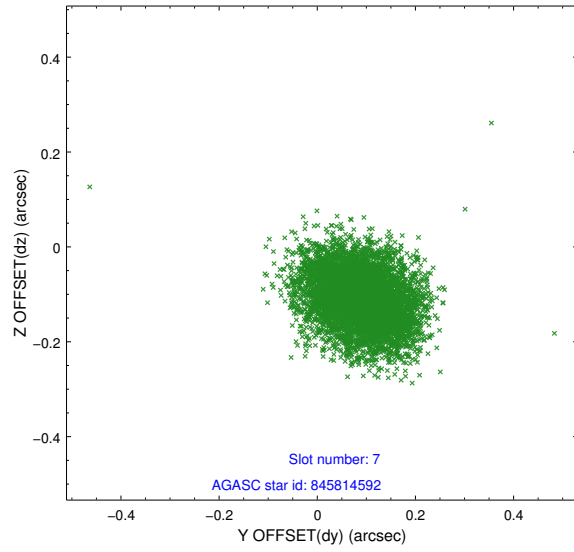
2.4.3 Slot 5



2.4.4 Slot 6

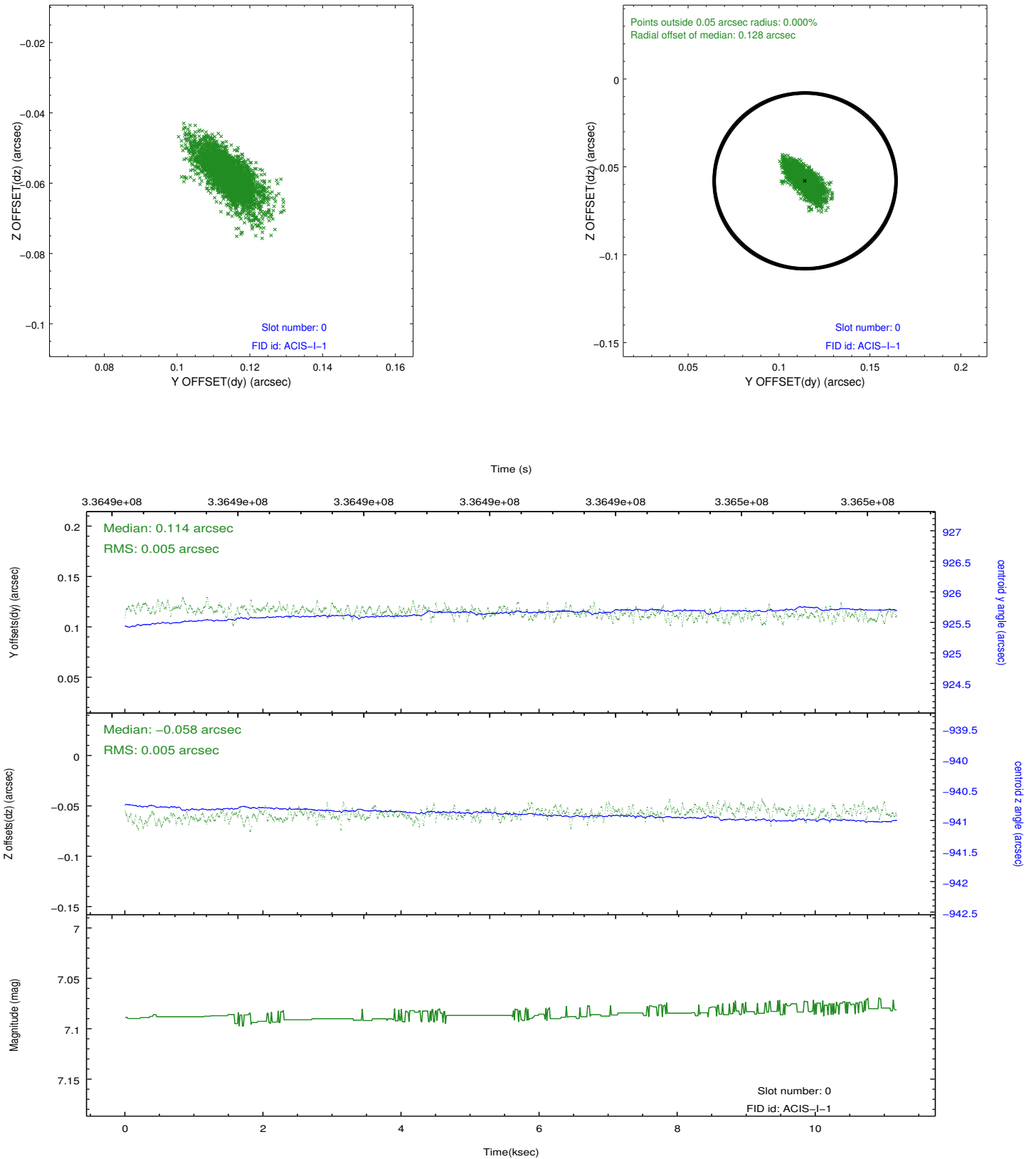


2.4.5 Slot 7

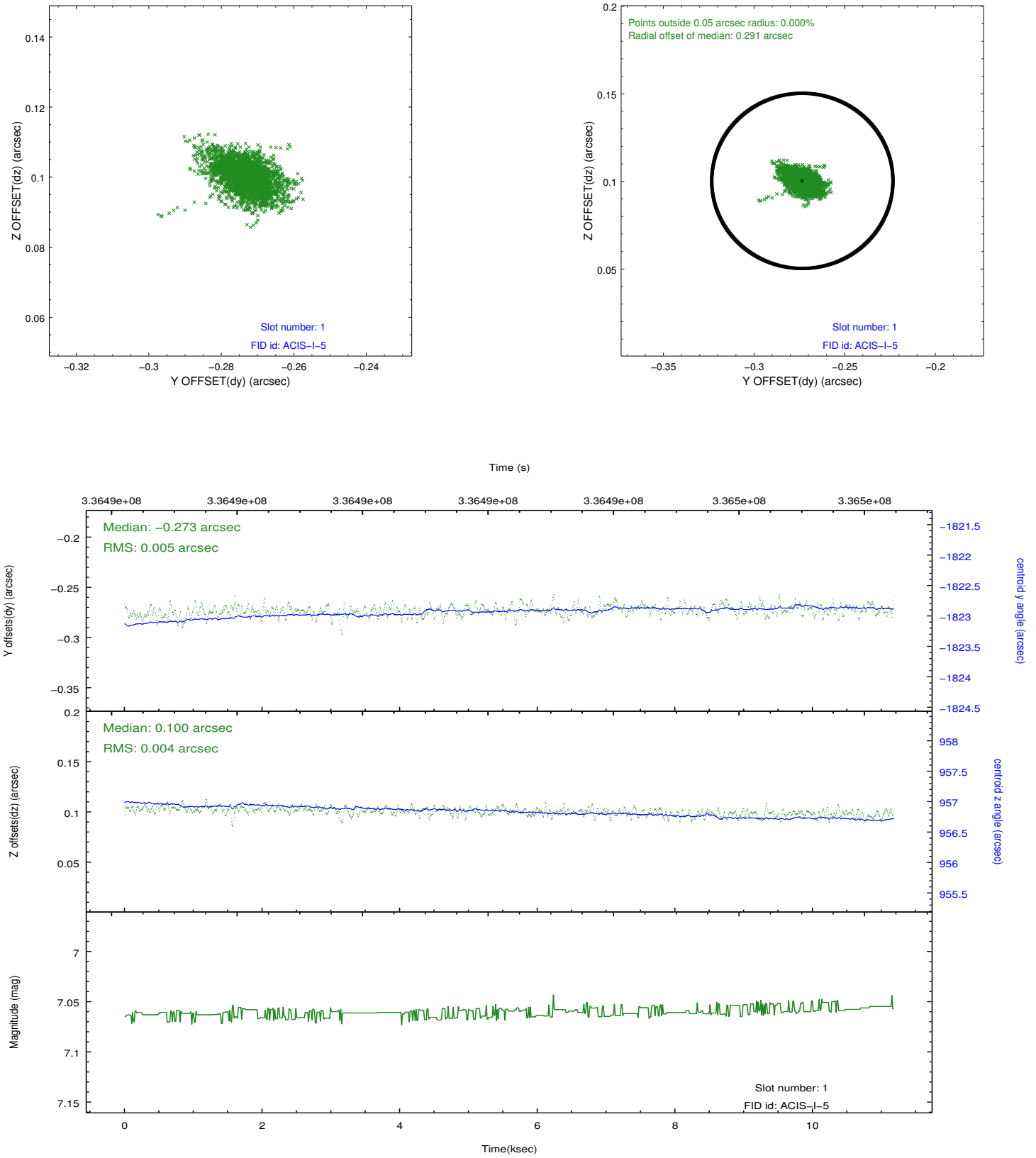


2.5 FID Slots

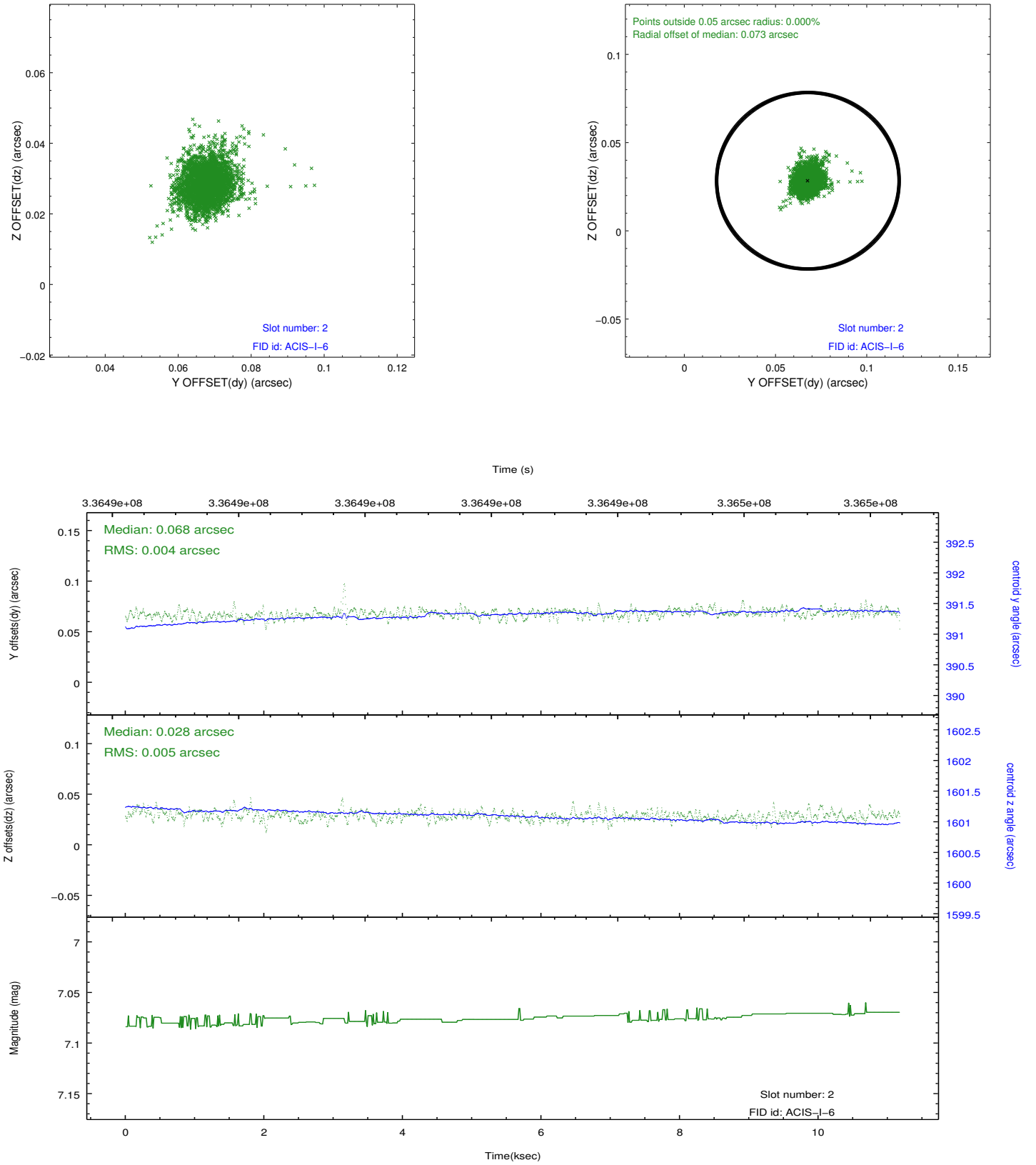
2.5.1 Slot 0



2.5.2 Slot 1



2.5.3 Slot 2



A Summary

A.1 Status

V&V Scientist	Beth Sundheim
V&V Date (YYYY-MM-DD)	2012.05.29
V&V Edition	1
V&V Disposition and Status	OK
V&V Charge Time	10.7725

A.2 Comments