

V&V Reference Report

L2 ASCDS Version : 8.4.4

Observation 9389 - L2 Version 2
Chandra X-Ray Center

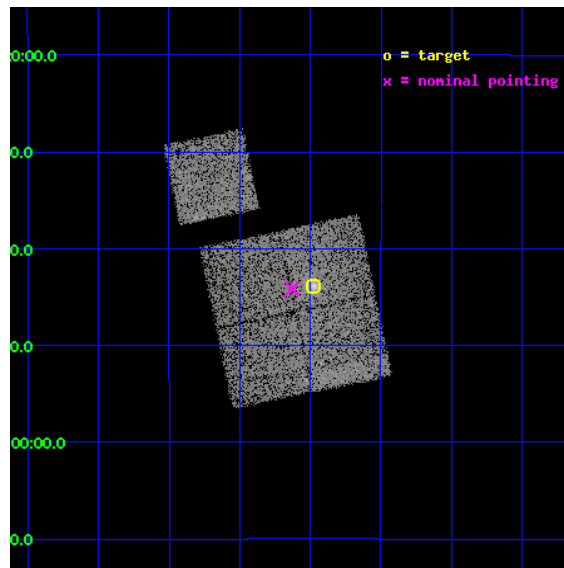
L2 Processing Date : May 4 2012

Contents

1	Front	2
2	OBI	3
2.1	OBI	3
2.1.1	Images	3
2.1.2	Bias	3
2.1.3	Parameters	4
2.1.4	Events	4
2.2	Compared Parameters	5
2.3	Aspect	6
2.4	Star Slots	9
2.4.1	Slot 3	9
2.4.2	Slot 4	10
2.4.3	Slot 5	11
2.4.4	Slot 6	12
2.4.5	Slot 7	13
2.5	FID Slots	14
2.5.1	Slot 0	14
2.5.2	Slot 1	15
2.5.3	Slot 2	16
A	Summary	17
A.1	Status	17
A.2	Comments	17

1 Front

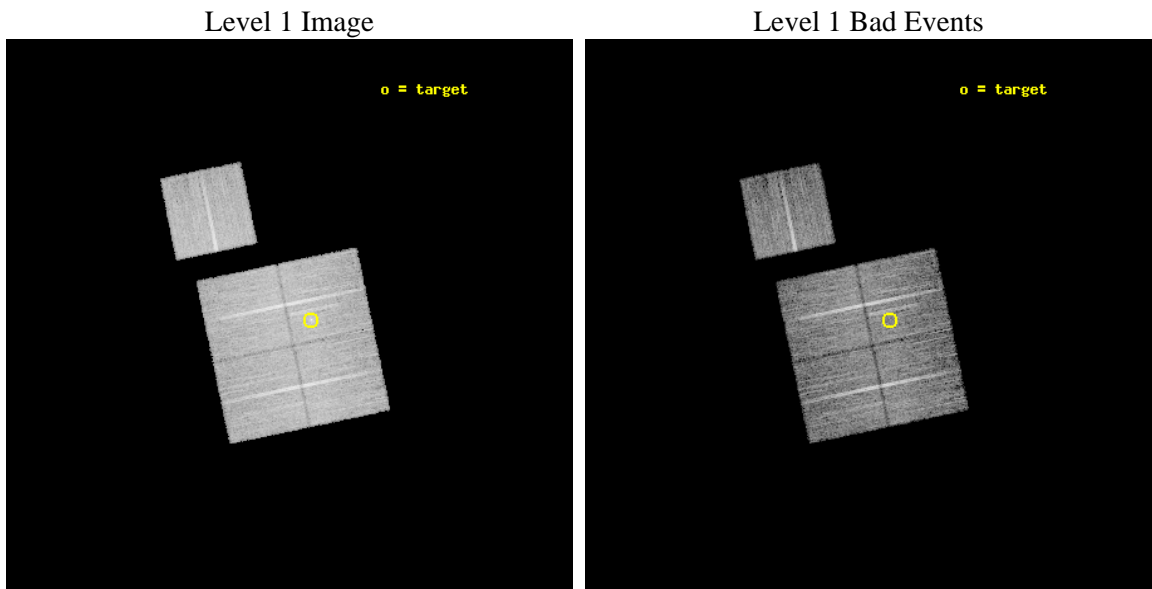
seq_num	800726	Sequence number
obs_id	9389	Observation id
title	SCALING RELATIONS FOR LOW-MASS GALAXY CLUSTERS AND GROUPS	Proposal
observer	Dr. Alexey Vikhlinin	Principal investigator
object	cl0306-0943	Source name
dtcycle	0	
cycle	P	events from which exps? Prim/Second/Both
ra_targ	46.619583	Observer's specified target RA [deg]
dec_targ	-9.730556	Observer's specified target Dec [deg]
ra_nom	46.657531013154	Nominal RA [deg]
dec_nom	-9.7359953826397	Nominal Dec [deg]
roll_nom	348.25788358478	Nominal Roll [deg]
revision	2	Processing version of data
ontime	10180.400078297	Sum of GTIs [s]
livetime	10047.385656572	Livetime [s]
ontime0	10180.400078297	Sum of GTIs [s]
ontime1	10177.259078026	Sum of GTIs [s]
ontime2	10177.259097993	Sum of GTIs [s]
ontime3	10180.400078297	Sum of GTIs [s]
ontime6	10180.400078297	Sum of GTIs [s]
l2events	36331	Number of level 2 events



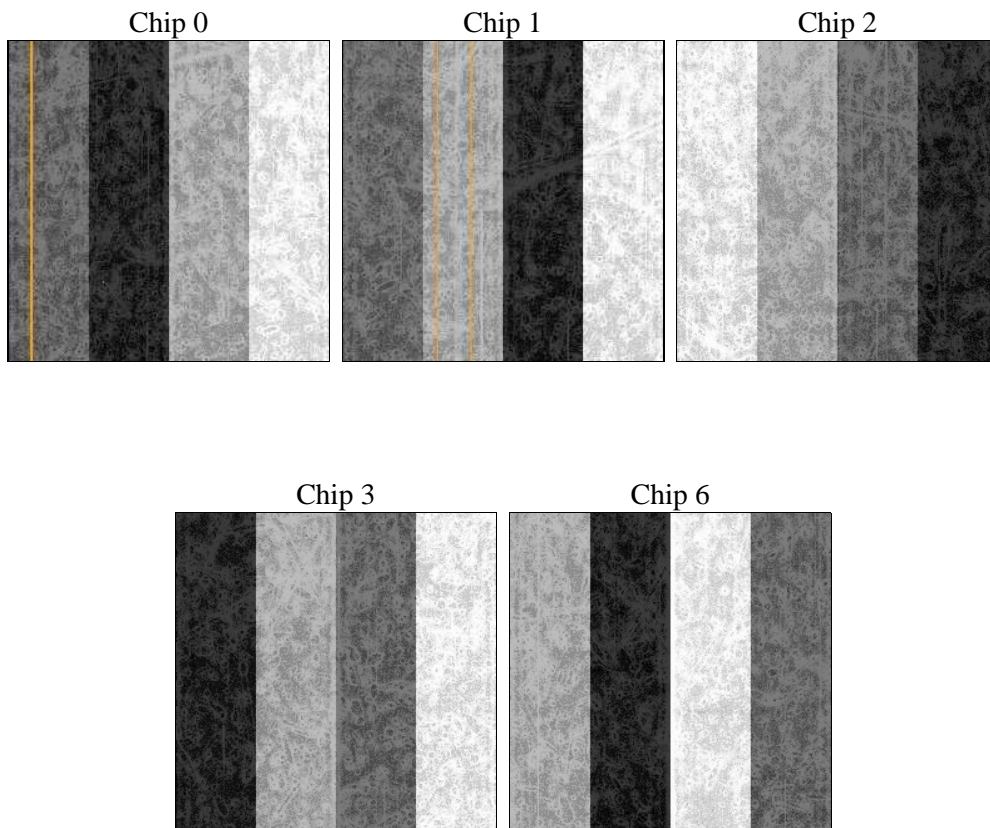
2 OBI

2.1 OBI

2.1.1 Images



2.1.2 Bias



2.1.3 Parameters

obi_num	0	Obi number	sched_exp_time	10000.000000	[s] Scheduled observation exposure time
ascdsver	8.4.4	Processing system revision	ontime	10180.400078297	Sum of GTIs [s]
caldsver	4.4.9	 	ontime0	10180.400078297	Sum of GTIs [s]
date	2012-05-04T14:56:03	Date and time of file creation	ontime1	10177.259078026	Sum of GTIs [s]
revision	2	Processing version of data	ontime2	10177.259097993	Sum of GTIs [s]
			ontime3	10180.400078297	Sum of GTIs [s]
			ontime6	10180.400078297	Sum of GTIs [s]
			l1events	435772	Number of level 1 events

2.1.4 Events

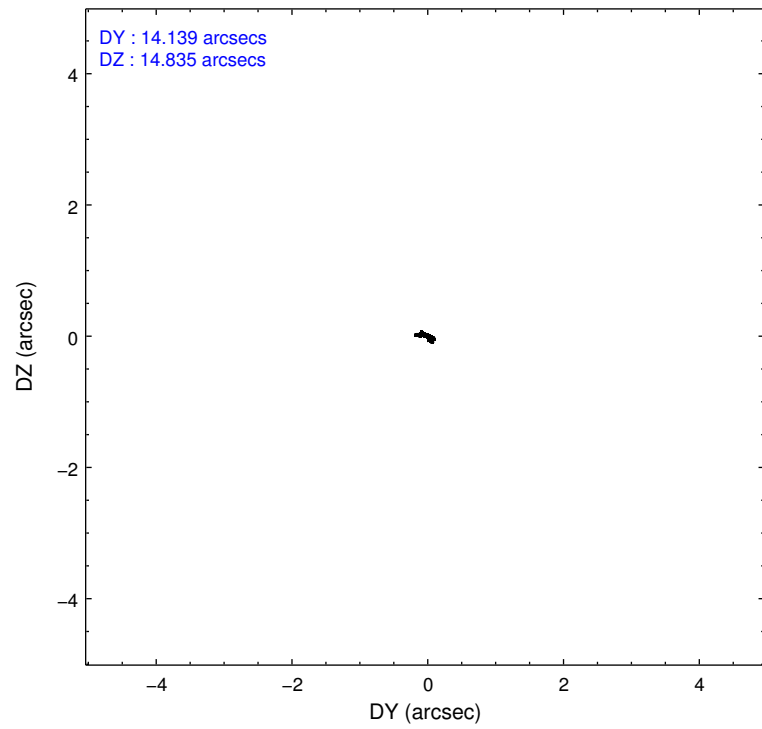
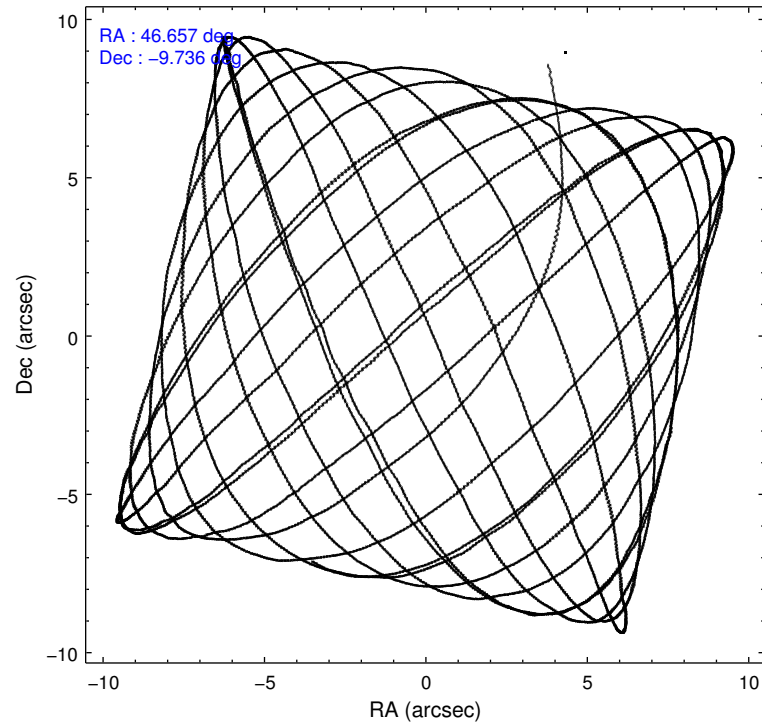
	ccd 0	ccd 1	ccd 2	ccd 3	ccd 6
level 1 events	83402	85254	91810	88886	86420
rejected events	75131	75777	83896	79693	77850
rejected %	90%	88%	91%	89%	90%

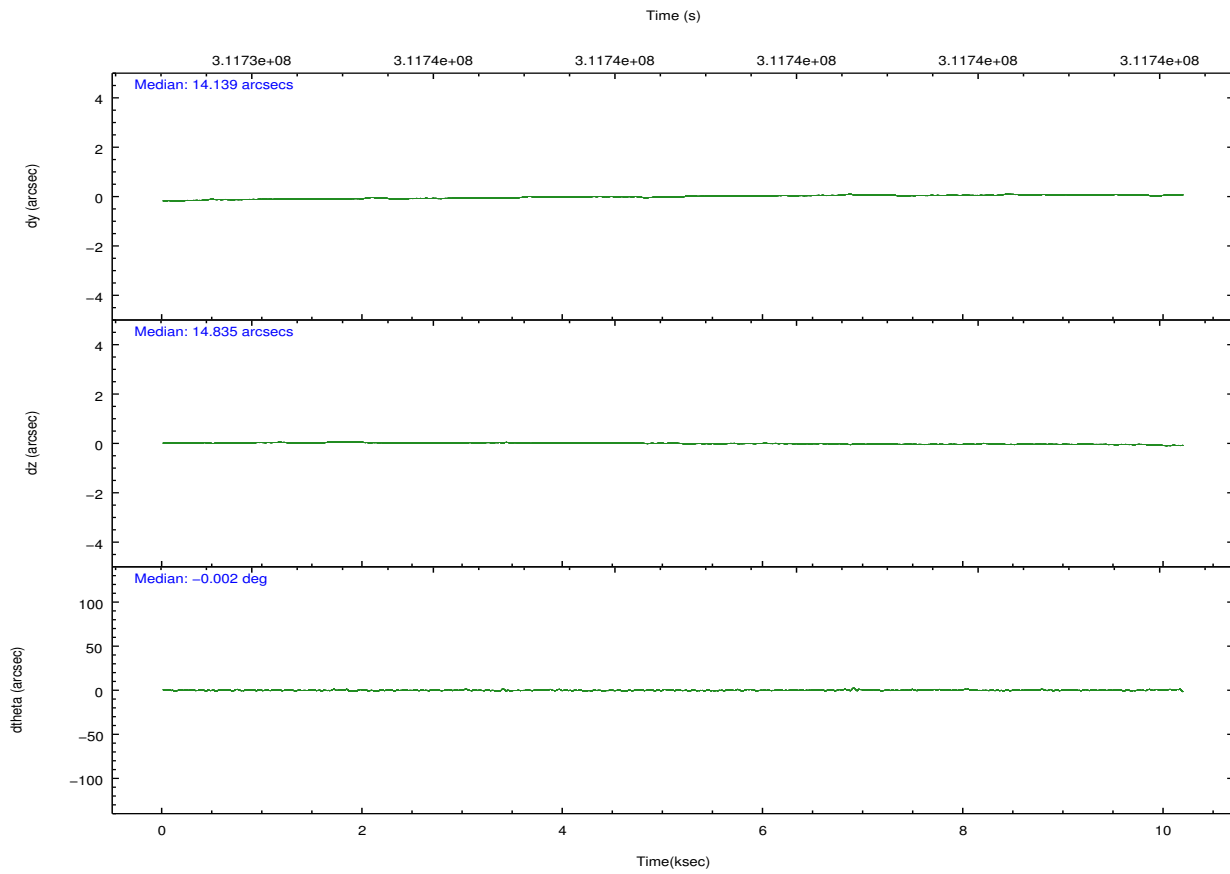
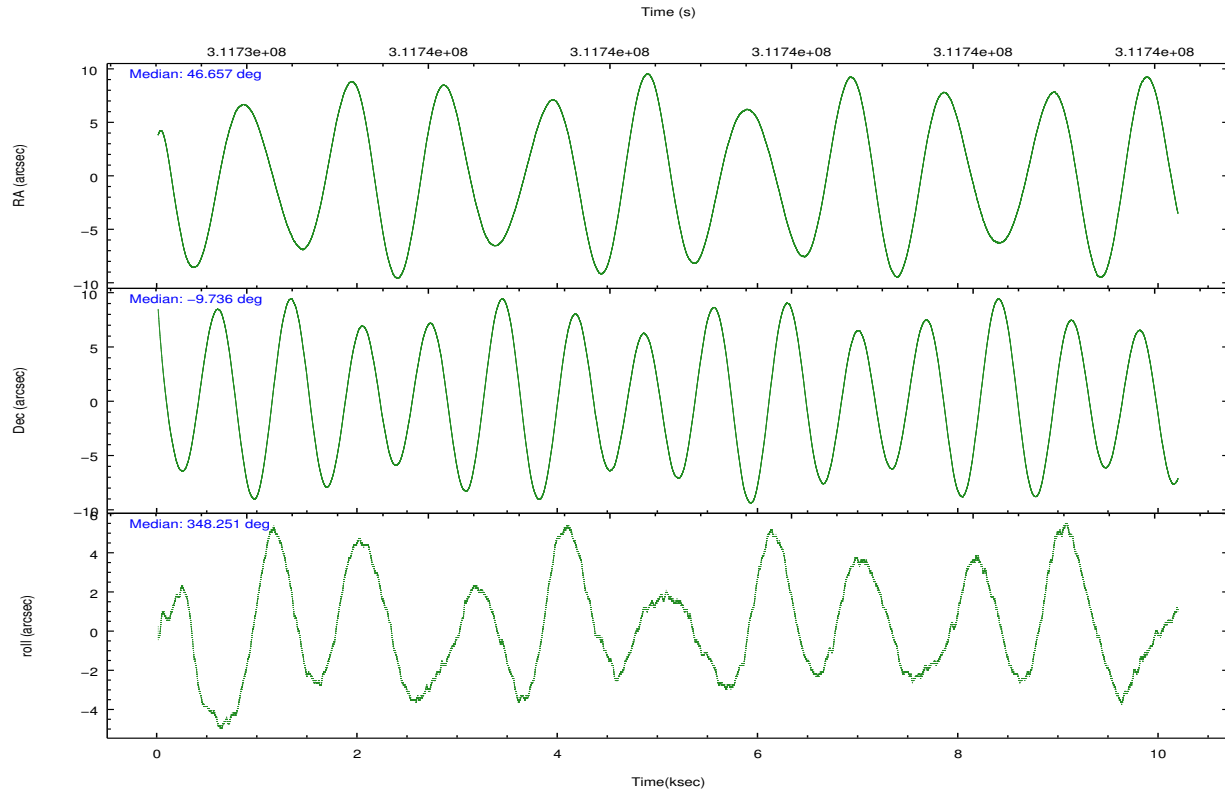
	ccd 0	ccd 1	ccd 2	ccd 3	ccd 6
grade 0 events	3095	3774	3054	4255	3238
	3%	4%	3%	4%	3%
grade 1 events	53	42	52	56	47
	0%	0%	0%	0%	0%
grade 2 events	2220	2278	2059	1923	2071
	2%	2%	2%	2%	2%
grade 3 events	1010	1083	918	999	1005
	1%	1%	0%	1%	1%
grade 4 events	868	1053	890	944	949
	1%	1%	0%	1%	1%
grade 5 events	2999	3475	2928	3585	3405
	3%	4%	3%	4%	3%
grade 6 events	1717	2044	1550	1711	1947
	2%	2%	1%	1%	2%
grade 7 events	71440	71505	80359	75413	73758
	85%	83%	87%	84%	85%

2.2 Compared Parameters

Parameter	Planned	Actual	Parameter	Planned	Actual
Instrument	ACIS	ACIS	Obspar format version number	7	7
Detector	ACIS-01236	ACIS-01236	Obspar file type	PREDICTED	ACTUAL
Grating	NONE	NONE	Obspar update status	NONE	UPDATED
Data mode	VFAINT	VFAINT	CCD I0 on	Y	Y
Observation mode	POINTING	POINTING	CCD I1 on	Y	Y
[deg] Pointing RA	46.631065	46.65753101315396	CCD I2 on	Y	Y
[deg] Pointing Dec	-9.744711	-9.735995382639679	CCD I3 on	Y	Y
[deg] Pointing Roll	348.044725	348.2578835847817	CCD S0 on	N	N
[mm] SIM focus pos	-0.782348	-0.7809083437167272	CCD S1 on	N	N
[mm] SIM defocus	0	0.001439871863259334	CCD S2 on	O1	Y
[mm] SIM translation stage pos	-228.592463	-228.5990329025337	CCD S3 on	N	N
[mm] SIM translation stage offset	-5	-4.993420100396037	CCD S4 on	N	N
[s] Observation start time (MET)	311733736.184000	311732354.13164	CCD S5 on	N	N
Observation start date	2007-11-18T00:41:11	2007-11-18T00:19:14	Number of optional ACIS chips dropped	0	0
[s] Observation end time (MET)	311743736.184000	311744875.53225	On-chip summing requested	N	N
Observation end date	2007-11-18T03:27:51	2007-11-18T03:47:55	Subarray requested	NONE	NONE
Read mode	TIMED	TIMED	Alternating exposures requested	N	N
			[s] Primary exposure time	0.000000	3.1

2.3 Aspect



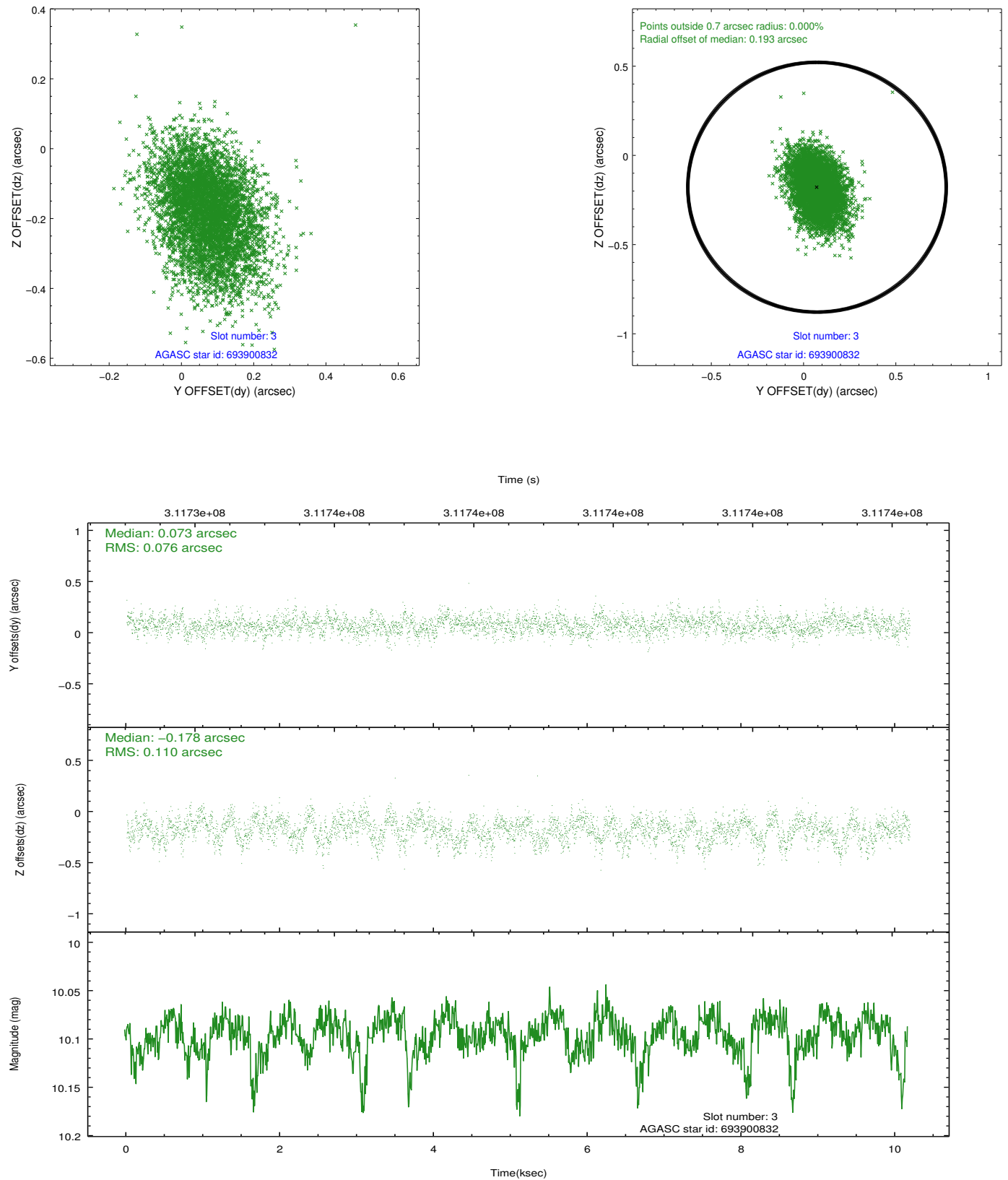


Slot Statistics

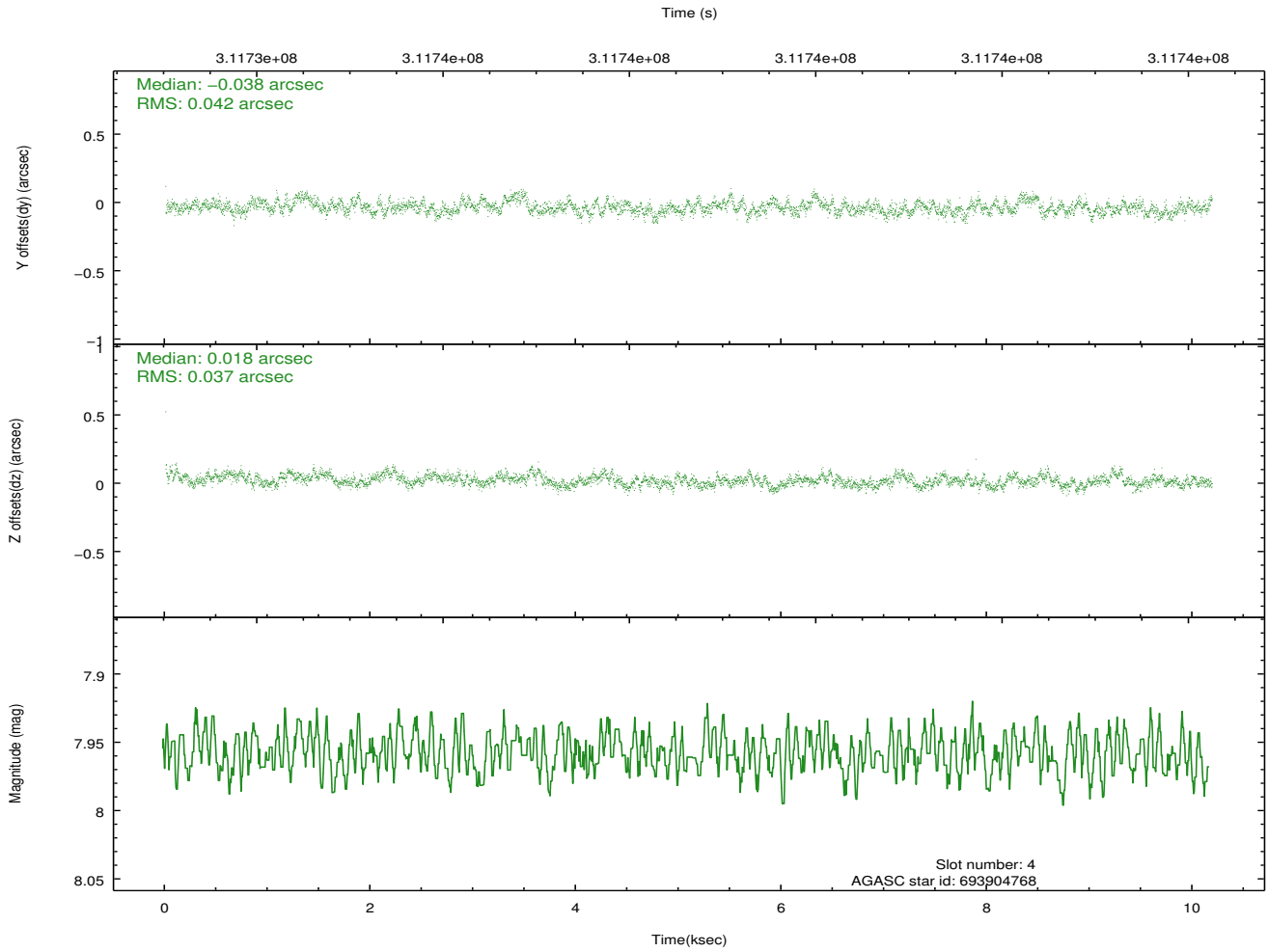
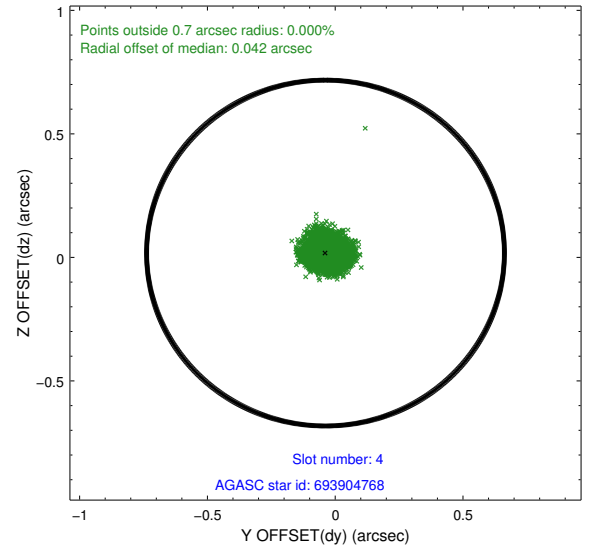
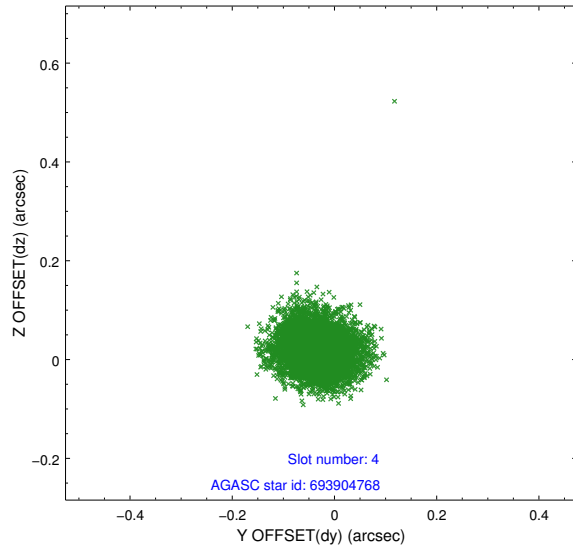
slot	status	id	mag	n_pts	med_dy	med_dz	dr1	dr2	ra	dec	mean_y	mean_z
0	FID	ACIS-I-1	7.23	2484	0.096	-0.028	0.010	0.017	0.000000	0.000000	925.35	-940.93
1	FID	ACIS-I-5	7.22	2484	-0.264	0.089	0.008	0.015	0.000000	0.000000	-1822.82	956.39
2	FID	ACIS-I-6	7.24	2483	0.076	0.010	0.009	0.015	0.000000	0.000000	390.33	1601.39
3	GUIDE	693900832	10.10	4958	0.073	-0.178	0.140	0.236	46.593218	-9.096437	-614.44	2255.12
4	GUIDE	693904768	7.96	4968	-0.038	0.018	0.060	0.094	47.115380	-9.544145	1533.01	1062.52
5	GUIDE	694288600	9.68	4963	0.120	0.052	0.113	0.184	47.119456	-10.342949	2139.43	-1749.46
6	GUIDE	694289656	8.54	4969	-0.055	0.064	0.084	0.131	46.194900	-10.179139	-1187.11	-1851.77
7	GUIDE	694291640	6.60	4967	-0.103	0.047	0.070	0.118	46.639054	-10.251975	406.30	-1780.85

2.4 Star Slots

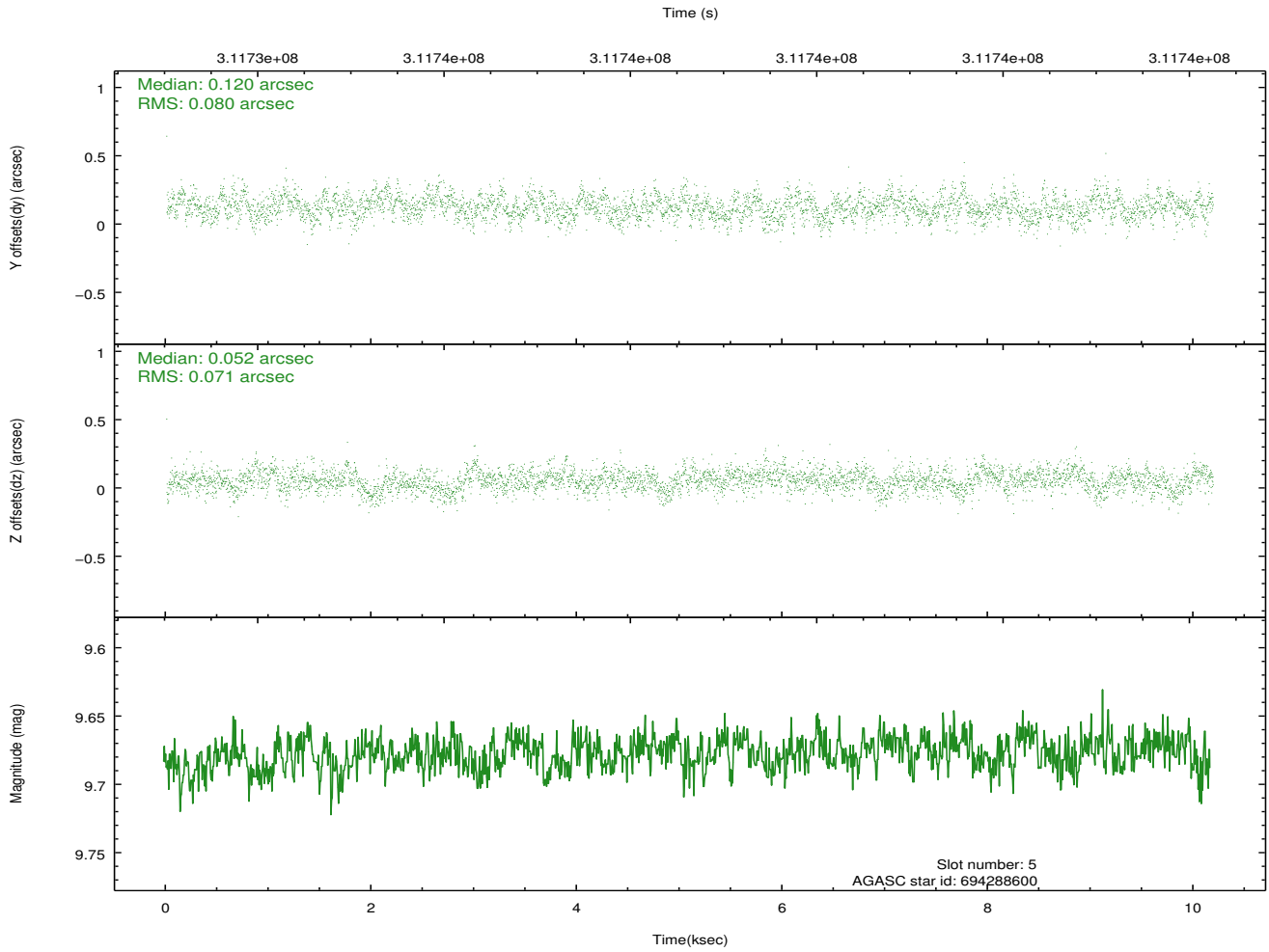
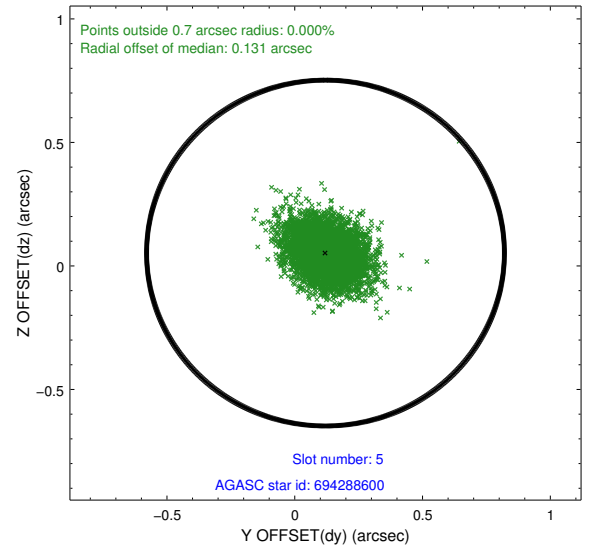
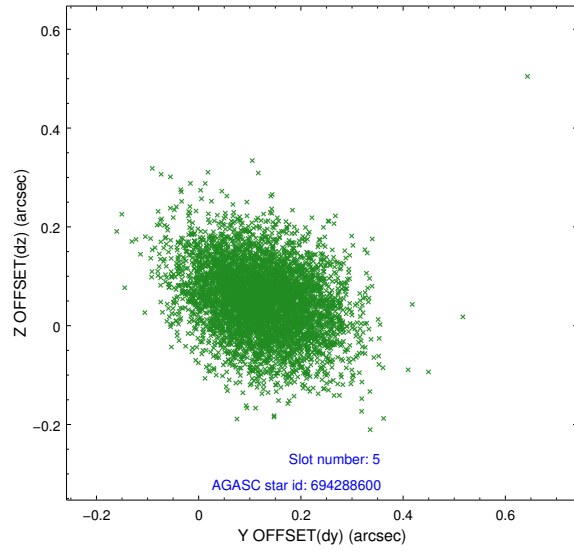
2.4.1 Slot 3



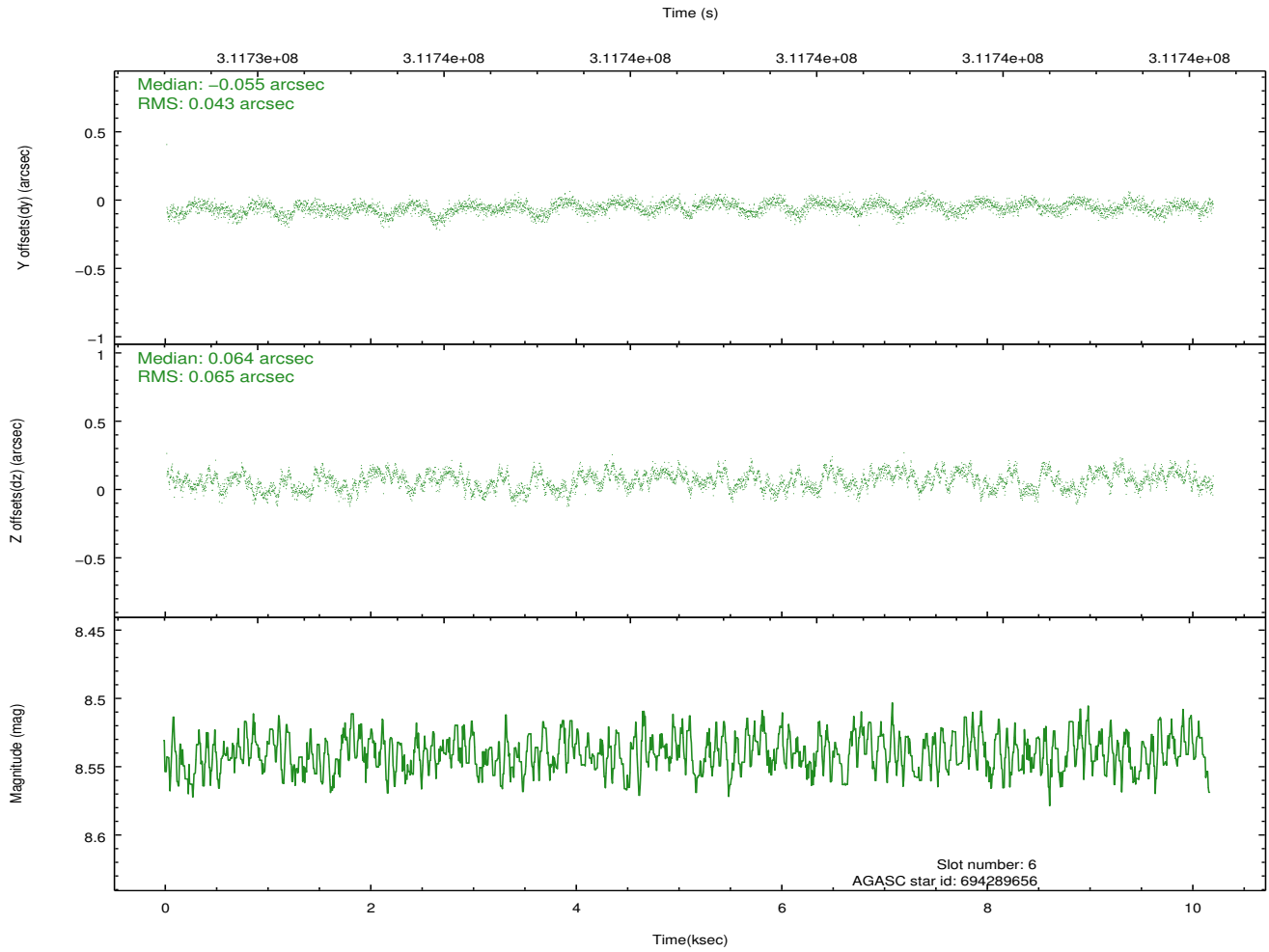
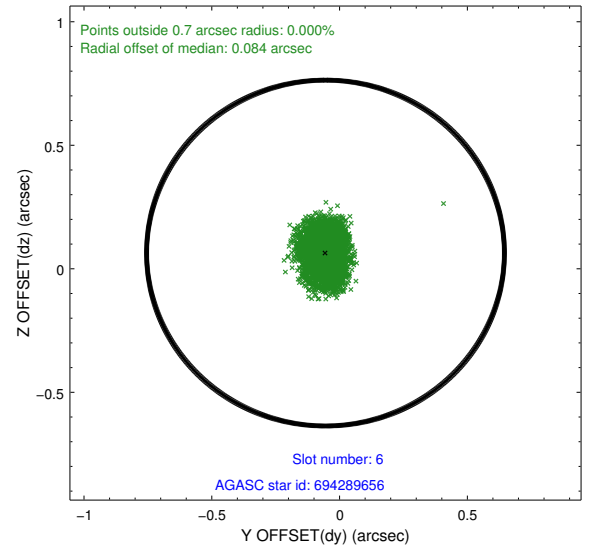
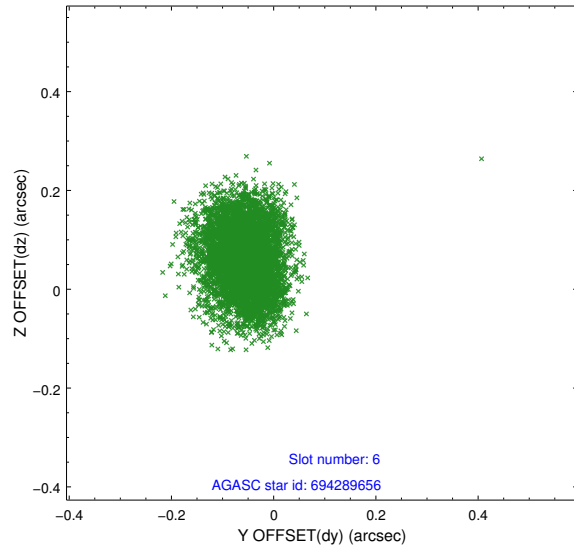
2.4.2 Slot 4



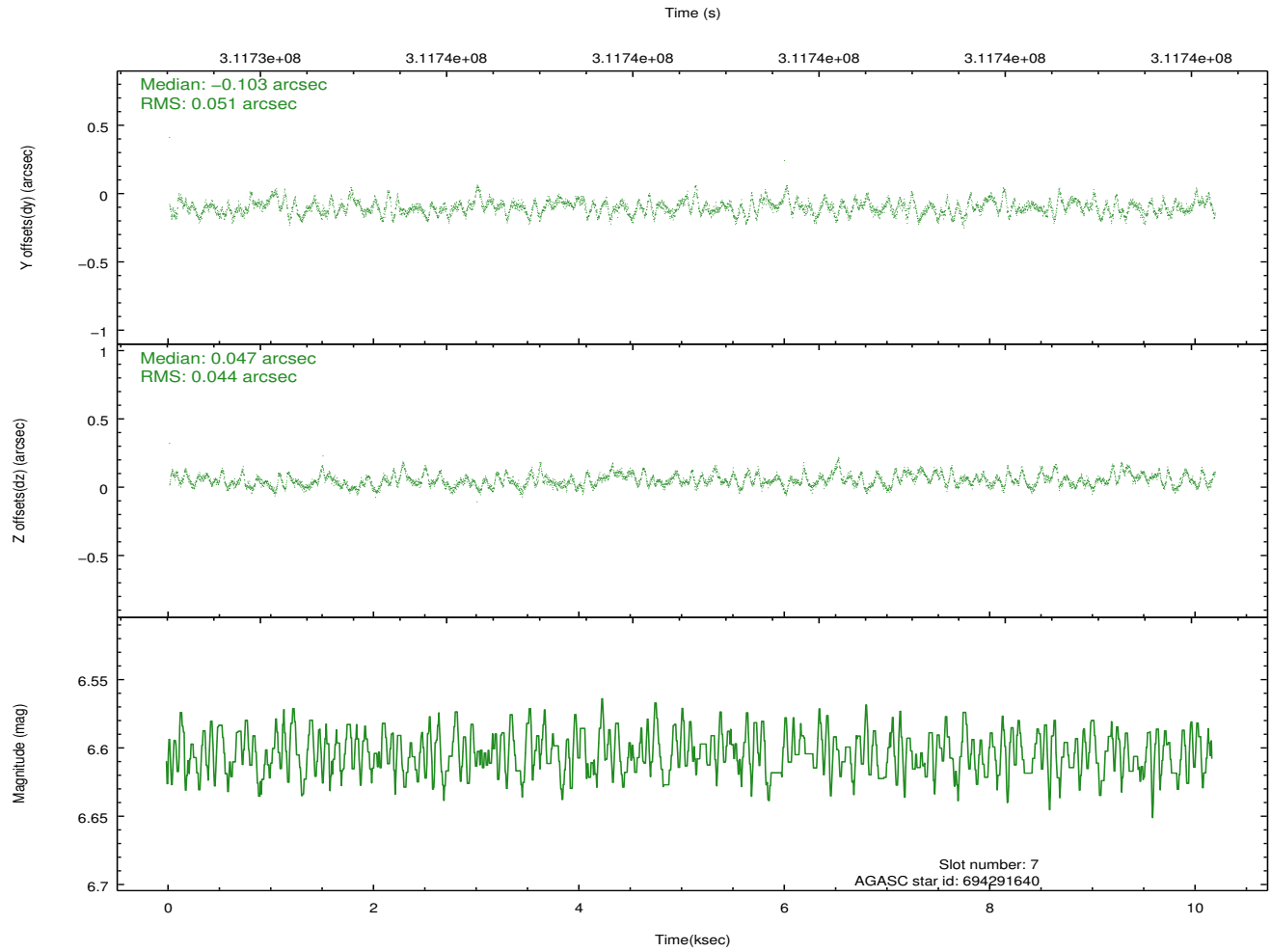
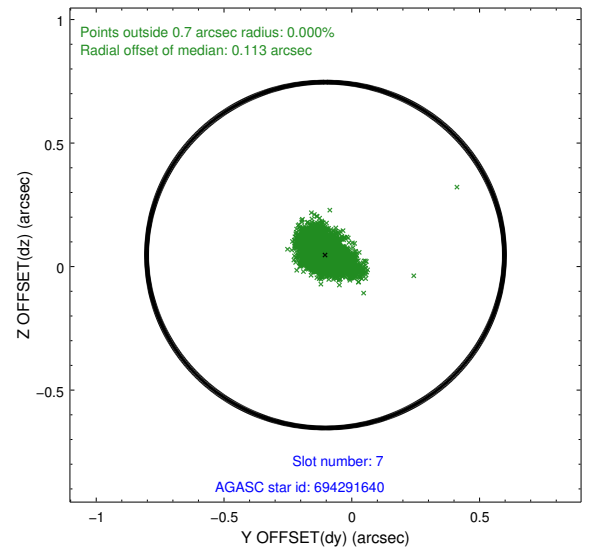
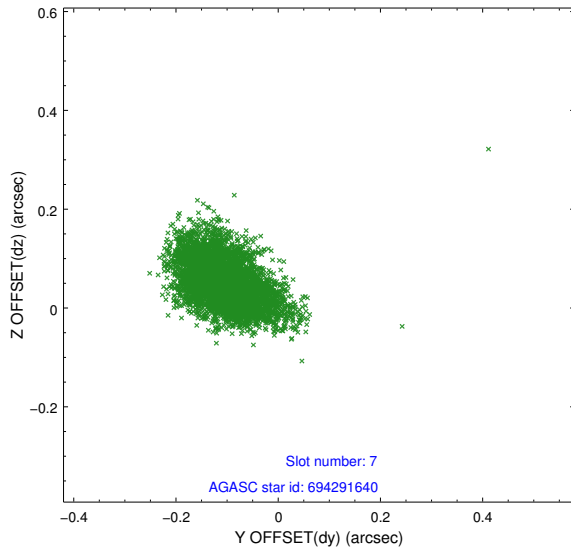
2.4.3 Slot 5



2.4.4 Slot 6

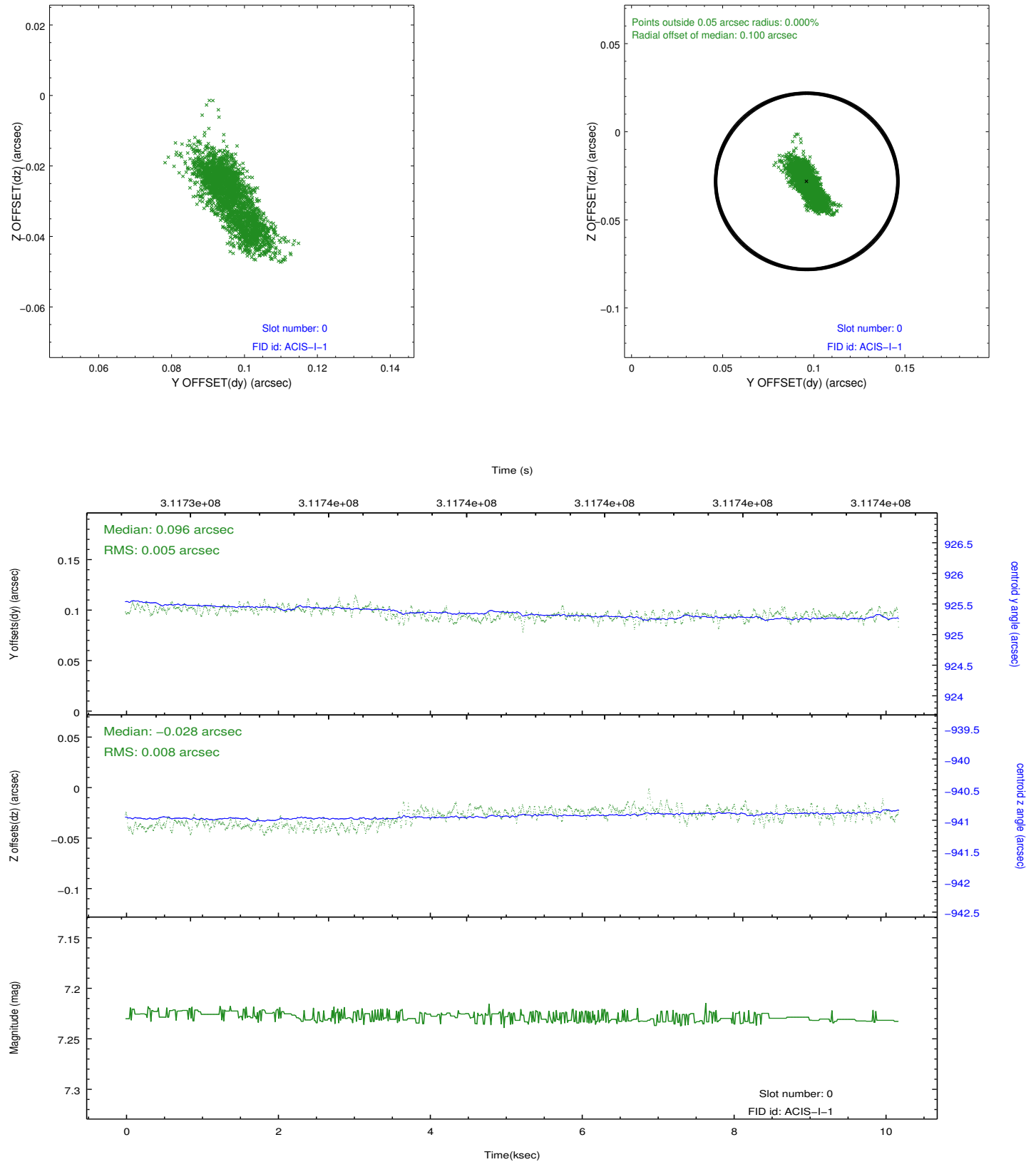


2.4.5 Slot 7

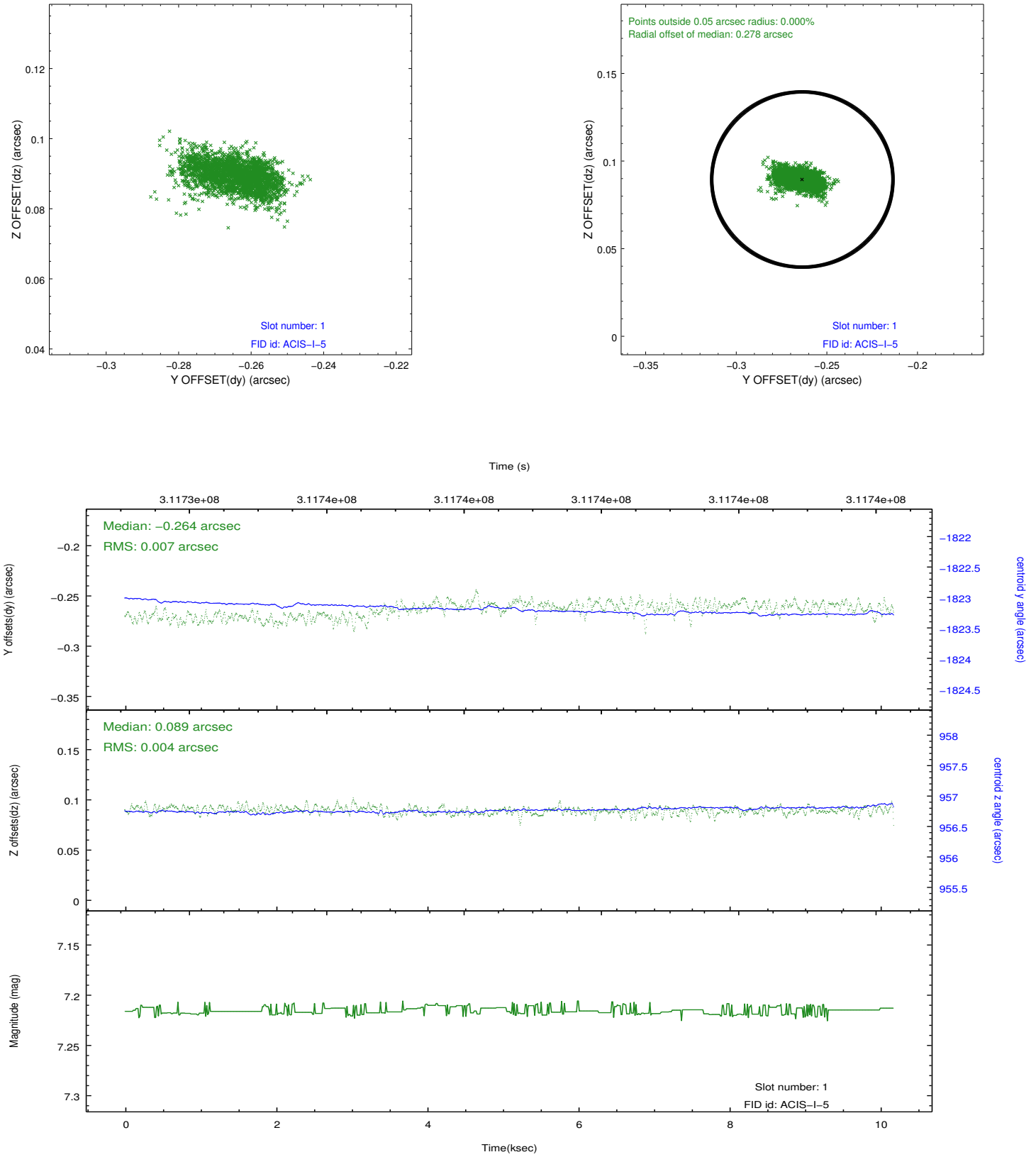


2.5 FID Slots

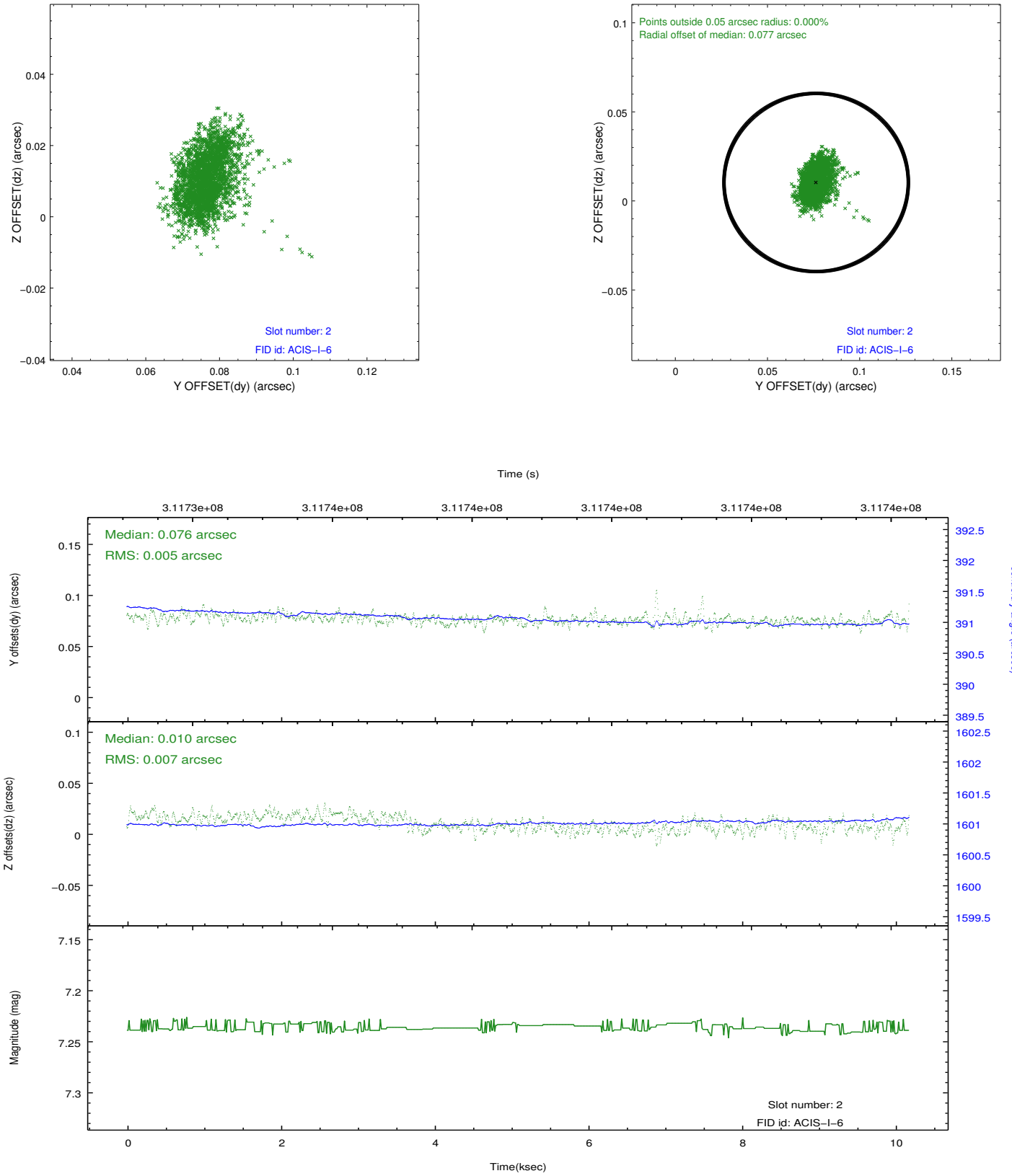
2.5.1 Slot 0



2.5.2 Slot 1



2.5.3 Slot 2



A Summary

A.1 Status

V&V Scientist	Jen Lauer
V&V Date (YYYY-MM-DD)	2012.05.07
V&V Edition	1
V&V Disposition and Status	OK
V&V Charge Time	10.1804

A.2 Comments