

V&V Reference Report

L2 ASCDS Version : 8.4.4

Observation 9386 - L2 Version 2
Chandra X-Ray Center

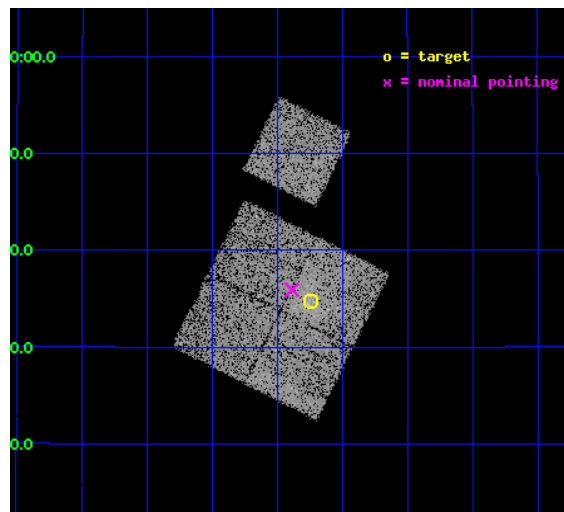
L2 Processing Date : May 6 2012

Contents

1	Front	2
2	OBI	3
2.1	OBI	3
2.1.1	Images	3
2.1.2	Bias	3
2.1.3	Parameters	4
2.1.4	Events	4
2.2	Compared Parameters	5
2.3	Aspect	6
2.4	Star Slots	9
2.4.1	Slot 3	9
2.4.2	Slot 4	10
2.4.3	Slot 5	11
2.4.4	Slot 6	12
2.4.5	Slot 7	13
2.5	FID Slots	14
2.5.1	Slot 0	14
2.5.2	Slot 1	15
2.5.3	Slot 2	16
A	Summary	17
A.1	Status	17
A.2	Comments	17

1 Front

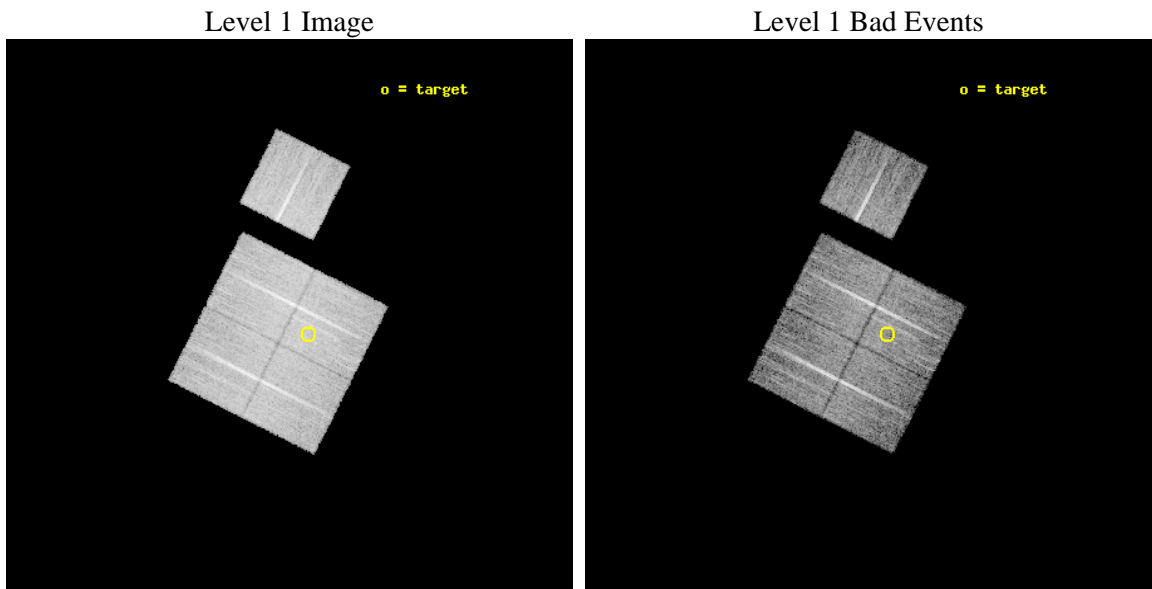
seq_num	800723	Sequence number
obs_id	9386	Observation id
title	SCALING RELATIONS FOR LOW-MASS GALAXY CLUSTERS AND GROUPS	Proposal
observer	Dr. Alexey Vikhlinin	Principal investigator
object	cl1630+2434	Source name
dtcycle	0	
cycle	P	events from which exps? Prim/Second/Both
ra_targ	247.56125	Observer's specified target RA [deg]
dec_targ	24.579722	Observer's specified target Dec [deg]
ra_nom	247.59719455381	Nominal RA [deg]
dec_nom	24.598761808406	Nominal Dec [deg]
roll_nom	26.741105938075	Nominal Roll [deg]
revision	2	Processing version of data
ontime	9774.2591149211	Sum of GTIs [s]
livetime	9646.5512238798	Livetime [s]
ontime0	9777.4000751972	Sum of GTIs [s]
ontime1	9777.4000751972	Sum of GTIs [s]
ontime2	9774.25908494	Sum of GTIs [s]
ontime3	9774.2591149211	Sum of GTIs [s]
ontime6	9777.4000751972	Sum of GTIs [s]
l2events	35971	Number of level 2 events



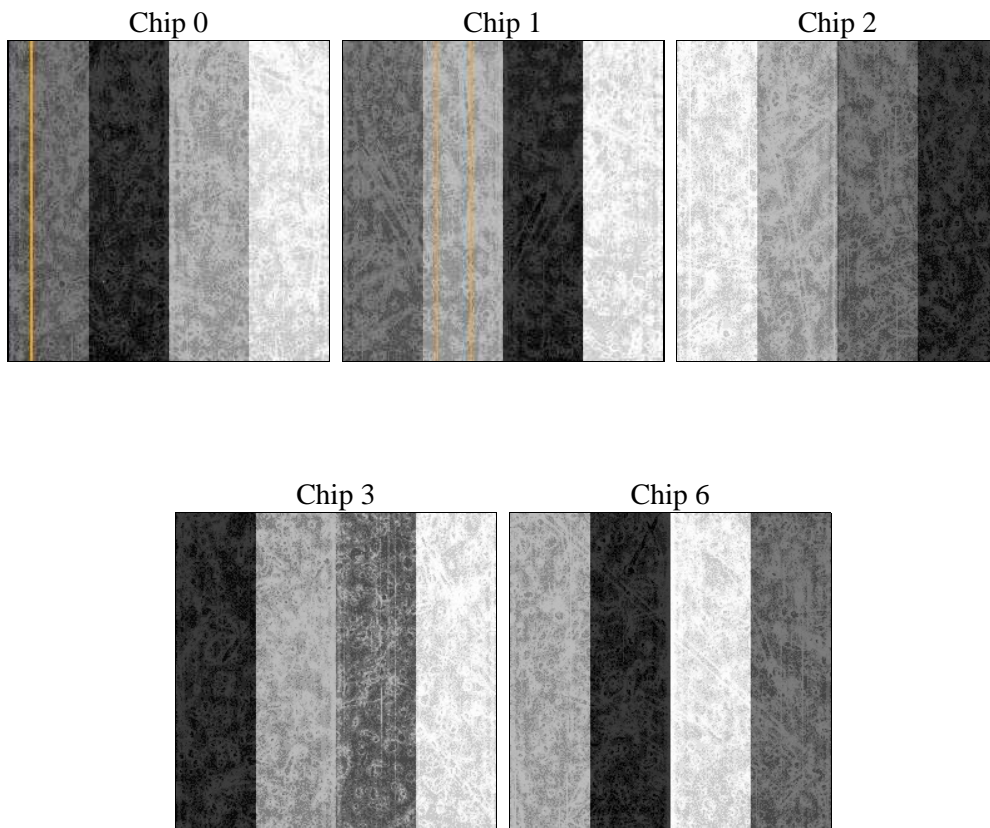
2 OBI

2.1 OBI

2.1.1 Images



2.1.2 Bias



2.1.3 Parameters

obi_num	1	Obi number	sched_exp_time	10000.000000	[s] Scheduled observation exposure time
ascdsver	8.4.4	Processing system revision	ontime	9774.2591149211	Sum of GTIs [s]
caldsver	4.4.9	 	ontime0	9777.4000751972	Sum of GTIs [s]
date	2012-05-06T14:22:35	Date and time of file creation	ontime1	9777.4000751972	Sum of GTIs [s]
revision	2	Processing version of data	ontime2	9774.25908494	Sum of GTIs [s]
			ontime3	9774.2591149211	Sum of GTIs [s]
			ontime6	9777.4000751972	Sum of GTIs [s]
			l1events	388218	Number of level 1 events

2.1.4 Events

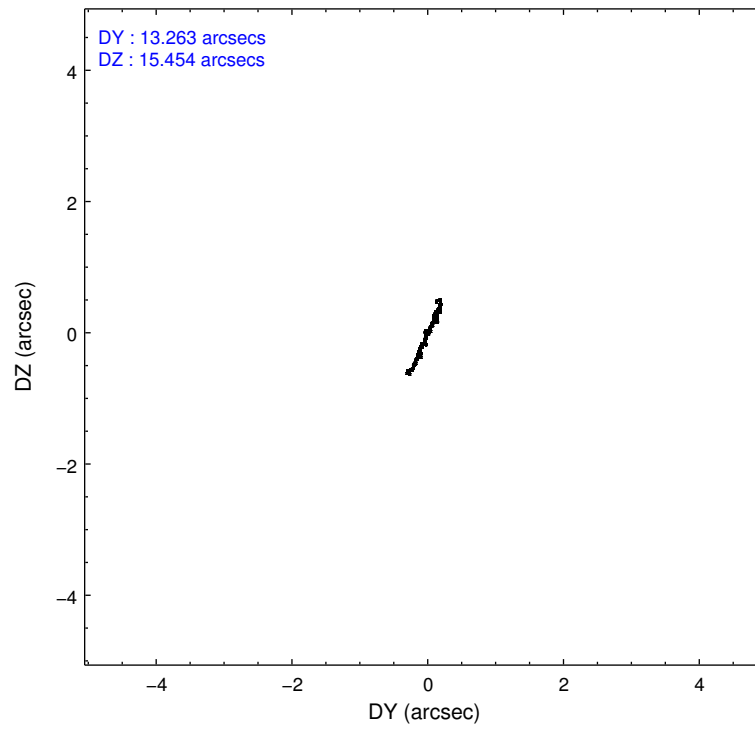
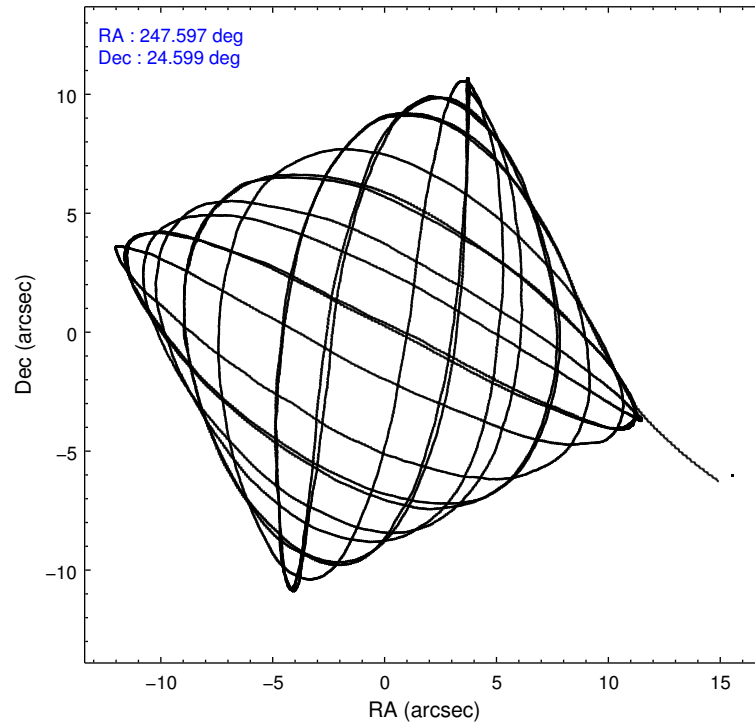
	ccd 0	ccd 1	ccd 2	ccd 3	ccd 6
level 1 events	73356	72174	84598	80069	78021
rejected events	65464	62899	76343	70721	69782
rejected %	89%	87%	90%	88%	89%

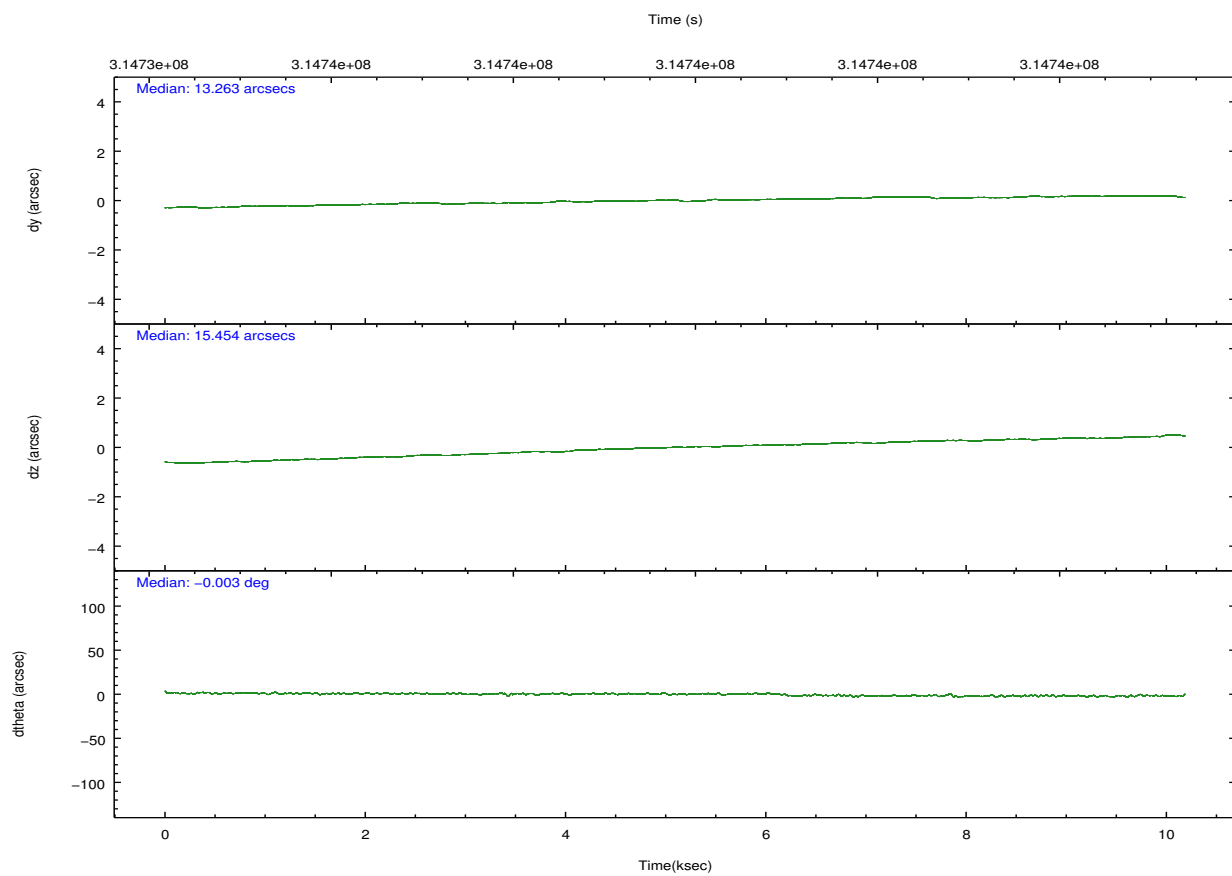
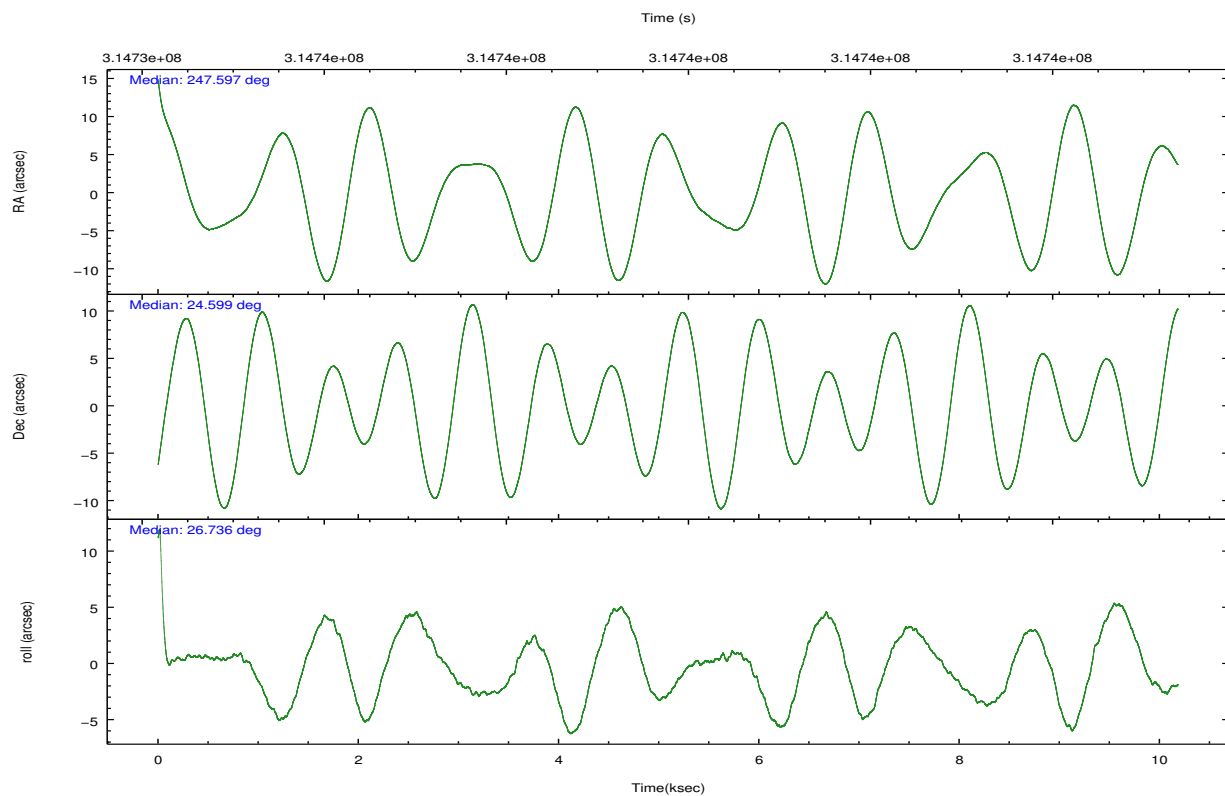
	ccd 0	ccd 1	ccd 2	ccd 3	ccd 6
grade 0 events	2849	3562	3164	4191	2891
	3%	4%	3%	5%	3%
grade 1 events	41	36	60	55	39
	0%	0%	0%	0%	0%
grade 2 events	1844	2074	1839	1849	1812
	2%	2%	2%	2%	2%
grade 3 events	874	914	834	910	875
	1%	1%	0%	1%	1%
grade 4 events	877	931	926	940	873
	1%	1%	1%	1%	1%
grade 5 events	2764	3137	2497	3191	3144
	3%	4%	2%	3%	4%
grade 6 events	1454	1796	1494	1460	1790
	1%	2%	1%	1%	2%
grade 7 events	62653	59724	73784	67473	66597
	85%	82%	87%	84%	85%

2.2 Compared Parameters

Parameter	Planned	Actual	Parameter	Planned	Actual
Instrument	ACIS	ACIS	Obspar format version number	7	7
Detector	ACIS-01236	ACIS-01236	Obspar file type	PREDICTED	ACTUAL
Grating	NONE	NONE	Obspar update status	NONE	UPDATED
Data mode	VFAINT	VFAINT	CCD I0 on	Y	Y
Observation mode	POINTING	POINTING	CCD I1 on	Y	Y
[deg] Pointing RA	247.580670	247.5971945538058	CCD I2 on	Y	Y
[deg] Pointing Dec	24.575691	24.59876180840576	CCD I3 on	Y	Y
[deg] Pointing Roll	26.539281	26.74110593807523	CCD S0 on	N	N
[mm] SIM focus pos	-0.782348	-0.7809083437167272	CCD S1 on	N	N
[mm] SIM defocus	0	0.001439871863259334	CCD S2 on	O1	Y
[mm] SIM translation stage pos	-228.592463	-228.6015472178352	CCD S3 on	N	N
[mm] SIM translation stage offset	-5	-4.990905785094469	CCD S4 on	N	N
[s] Observation start time (MET)	314734874.184000	314734040.12673	CCD S5 on	N	N
Observation start date	2007-12-22T18:20:09	2007-12-22T18:07:20	Number of optional ACIS chips dropped	0	0
[s] Observation end time (MET)	314744874.184000	314745970.61481	On-chip summing requested	N	N
Observation end date	2007-12-22T21:06:49	2007-12-22T21:26:10	Subarray requested	NONE	NONE
Read mode	TIMED	TIMED	Alternating exposures requested	N	N
			[s] Primary exposure time	0.000000	3.1

2.3 Aspect



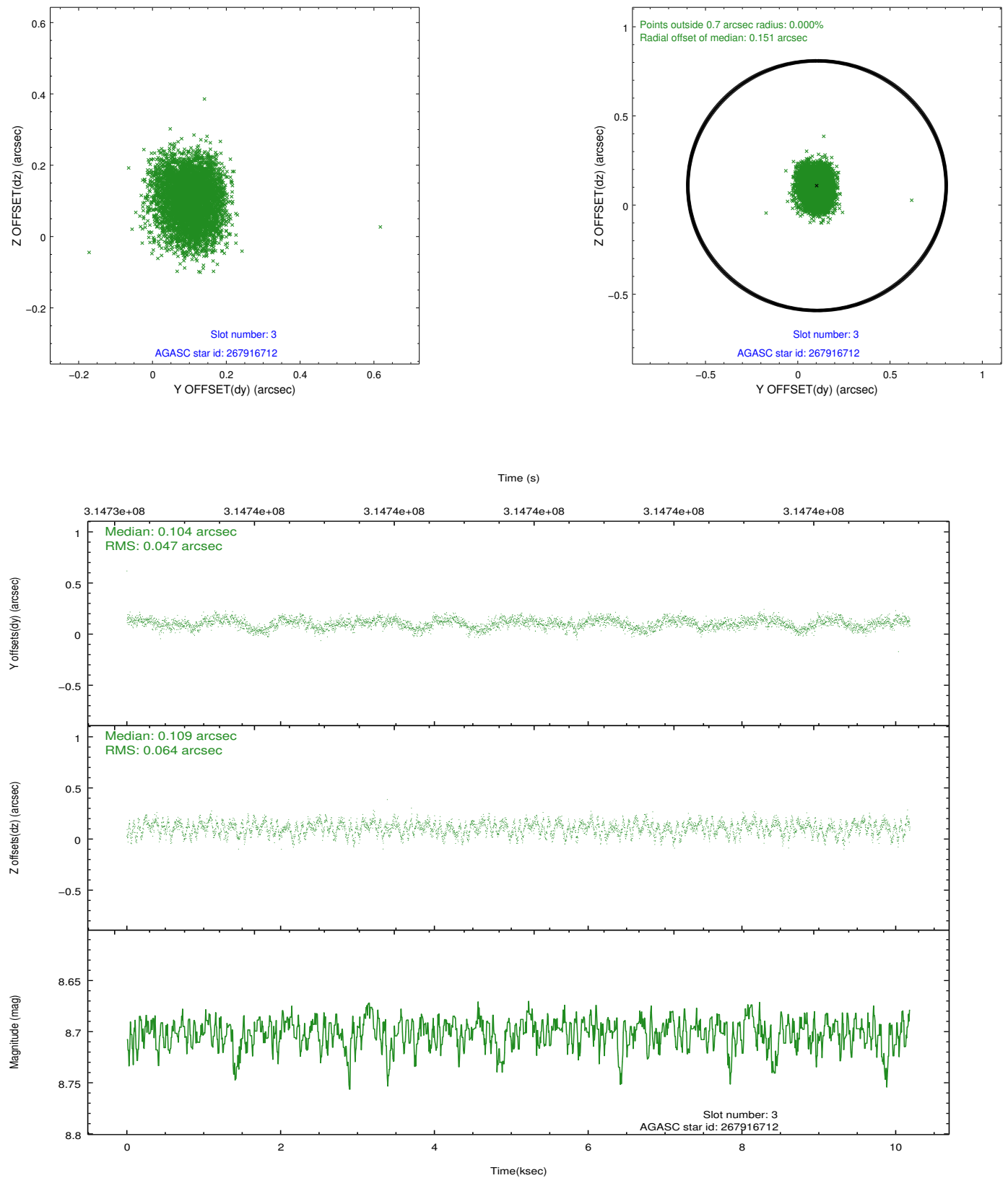


Slot Statistics

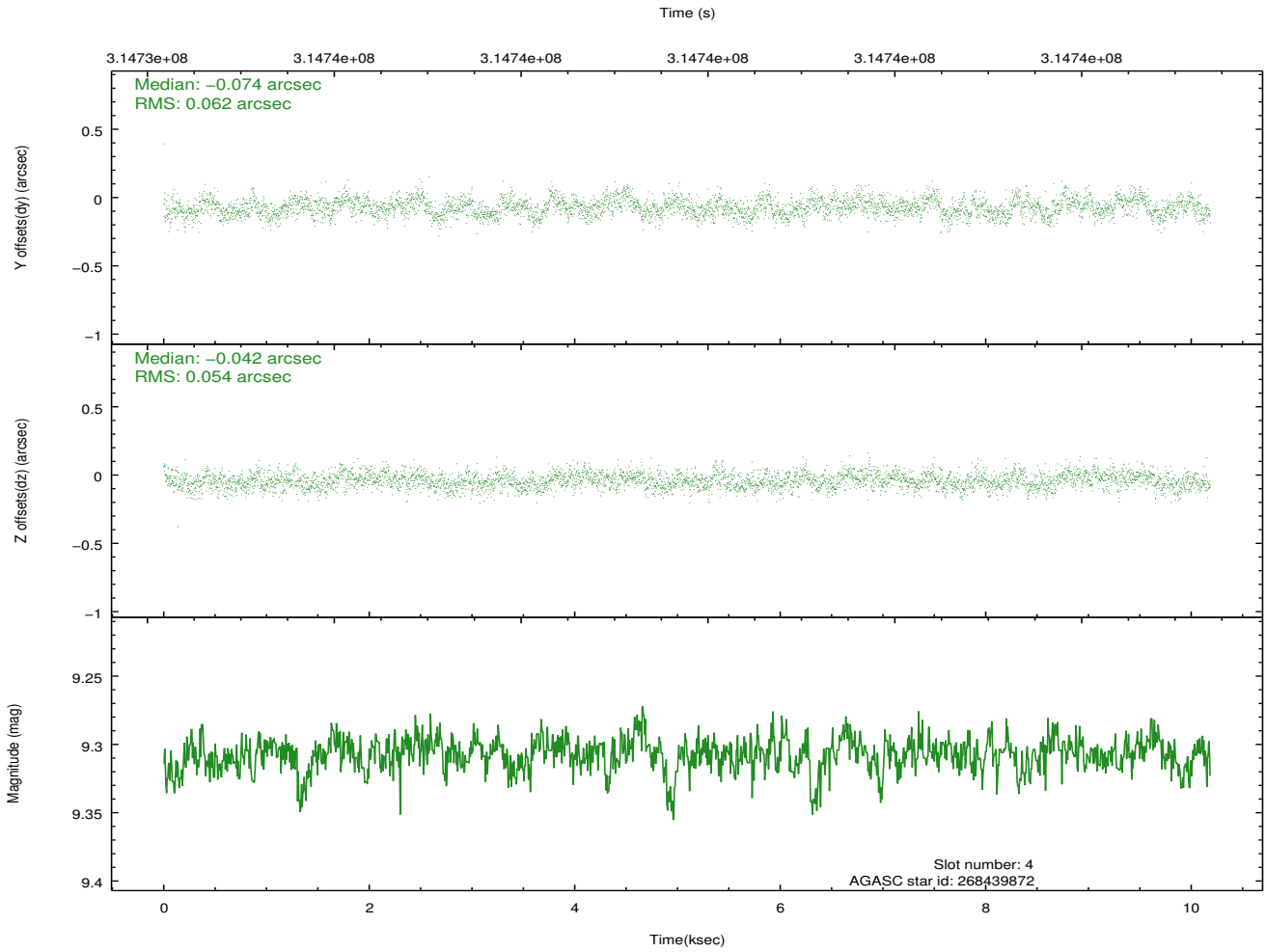
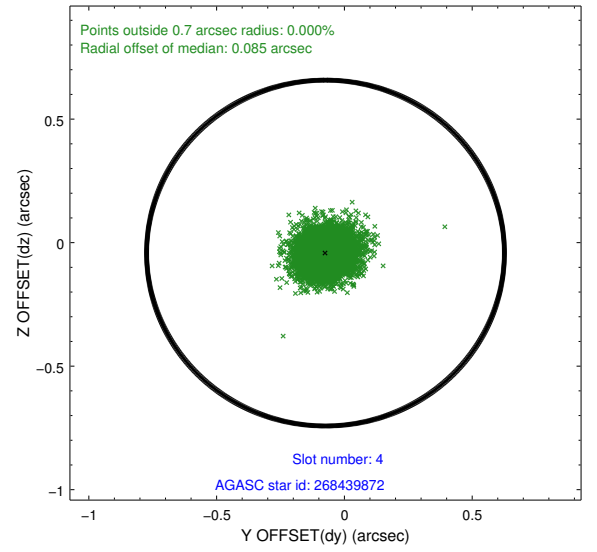
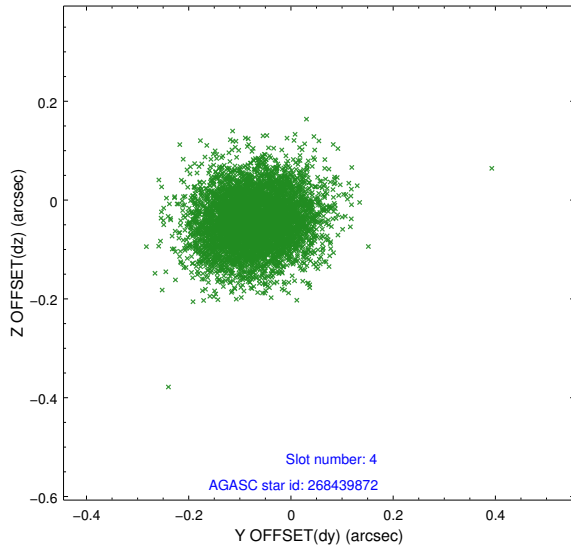
slot	status	id	mag	n_pts	med_dy	med_dz	dr1	dr2	ra	dec	mean_y	mean_z
0	FID	ACIS-I-1	7.23	2484	0.025	-0.075	0.013	0.023	0.000000	0.000000	926.22	-941.49
1	FID	ACIS-I-4	7.13	2484	0.125	0.064	0.013	0.019	0.000000	0.000000	2146.31	958.81
2	FID	ACIS-I-5	7.21	2485	-0.249	0.082	0.010	0.017	0.000000	0.000000	-1821.44	956.55
3	GUIDE	267916712	8.70	4961	0.104	0.109	0.085	0.134	247.745965	23.985695	-462.17	-2142.27
4	GUIDE	268439872	9.31	4965	-0.074	-0.042	0.088	0.142	247.869488	25.403310	2171.95	2246.76
5	GUIDE	268444776	8.77	4966	-0.050	-0.160	0.071	0.112	247.214335	24.864988	-604.18	1468.07
6	GUIDE	267912544	8.81	4964	0.058	0.237	0.089	0.146	247.549678	23.859768	-1242.87	-2259.74
7	GUIDE	268437600	8.13	4967	-0.037	-0.136	0.057	0.092	248.083033	24.849079	1908.90	149.63

2.4 Star Slots

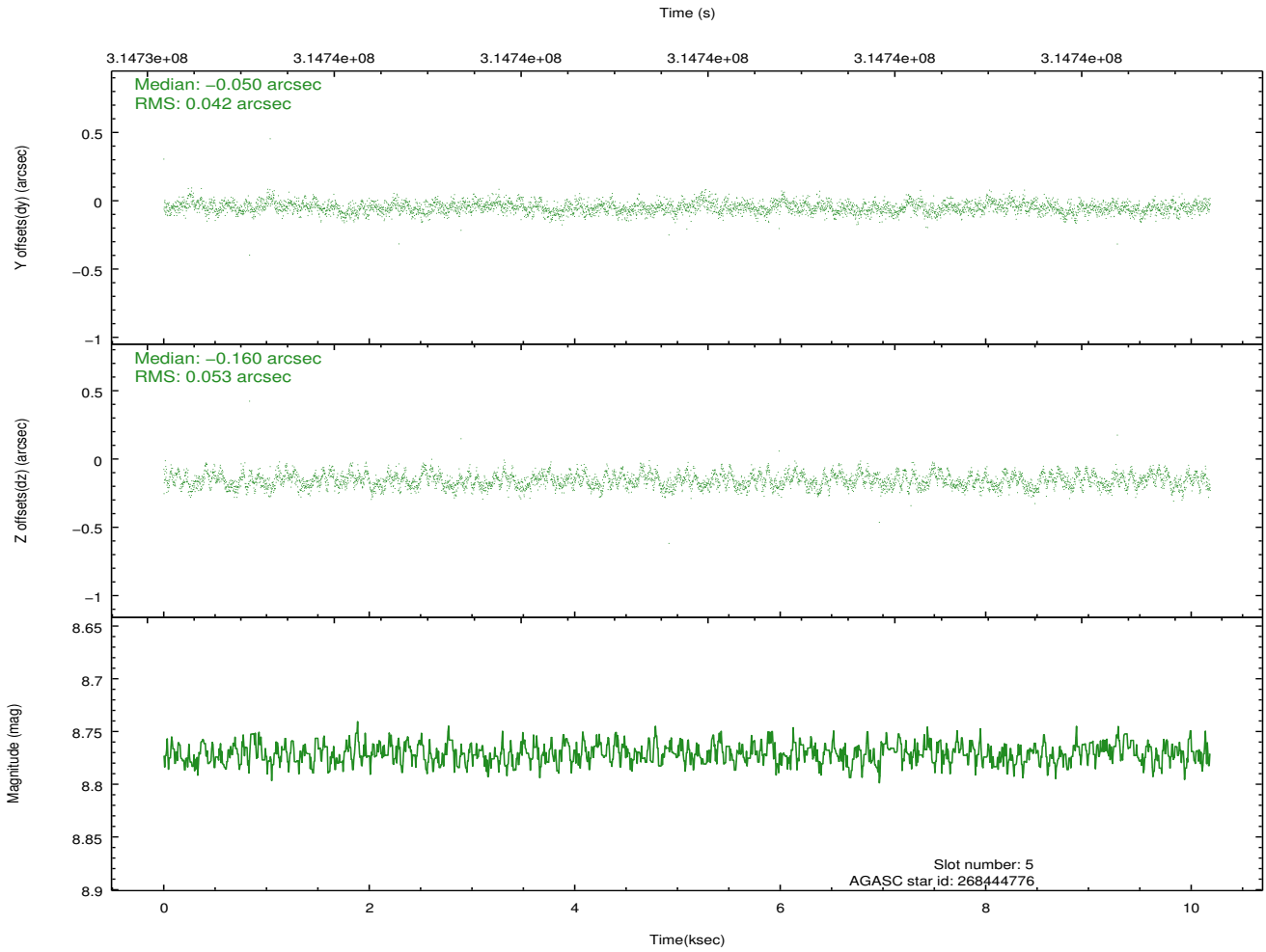
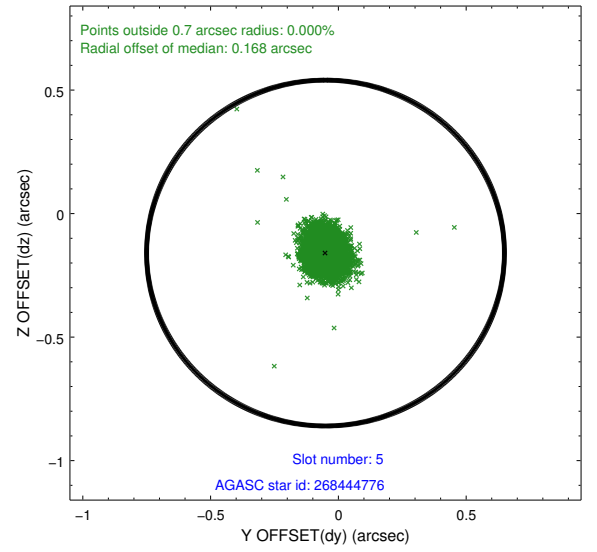
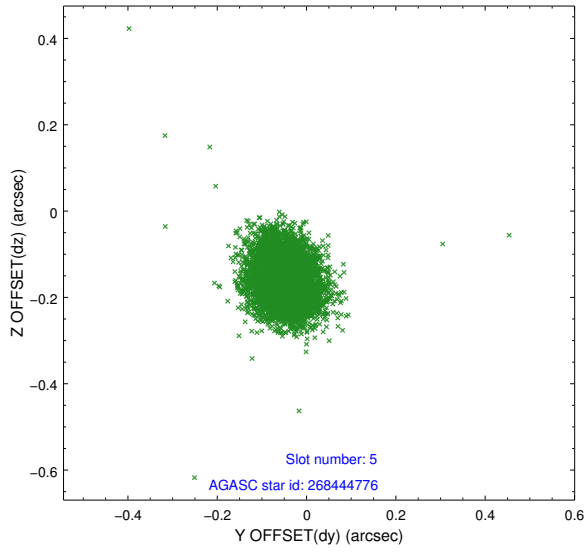
2.4.1 Slot 3



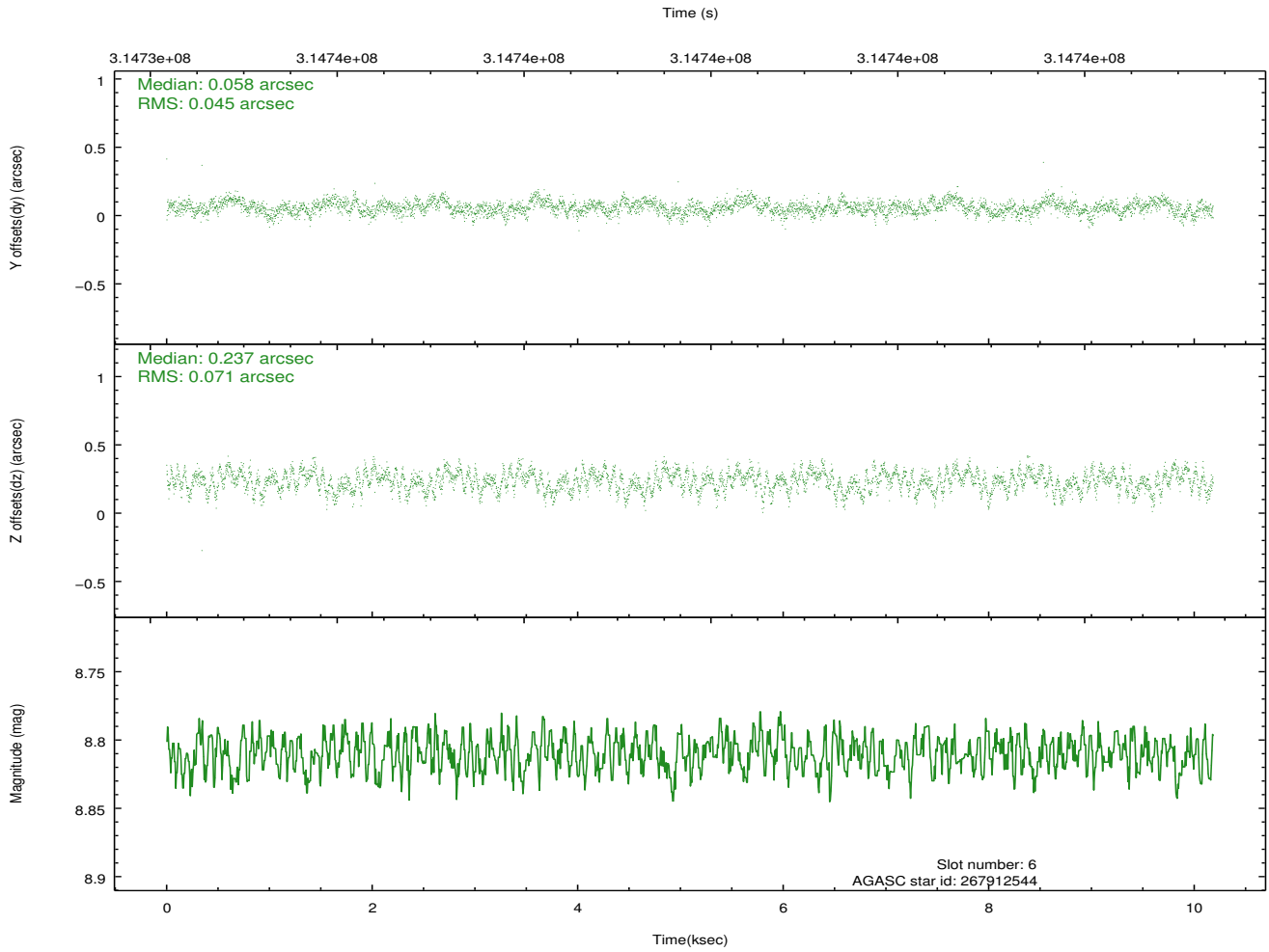
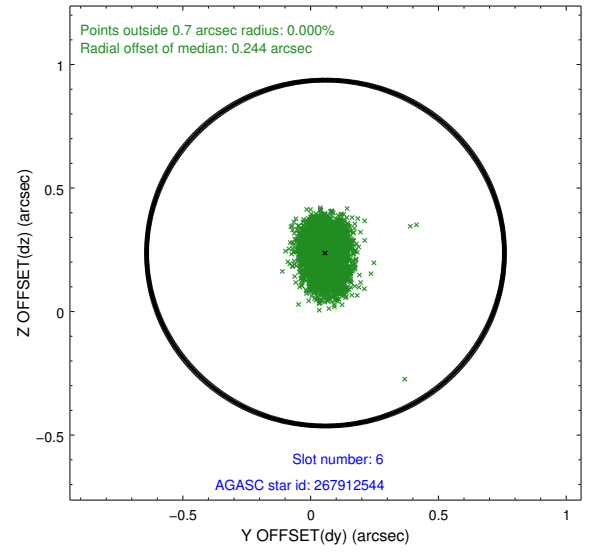
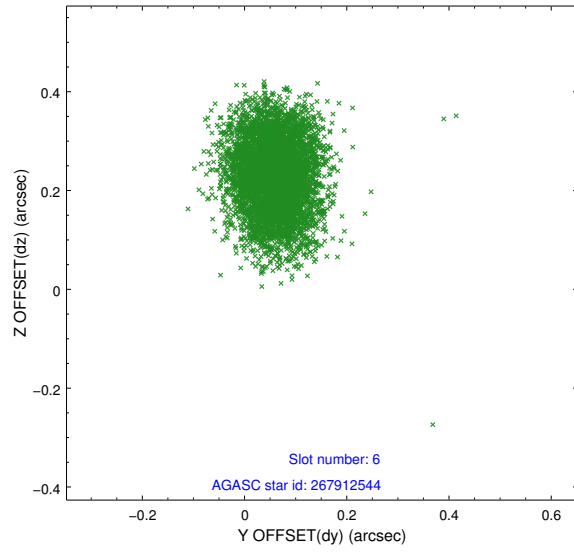
2.4.2 Slot 4



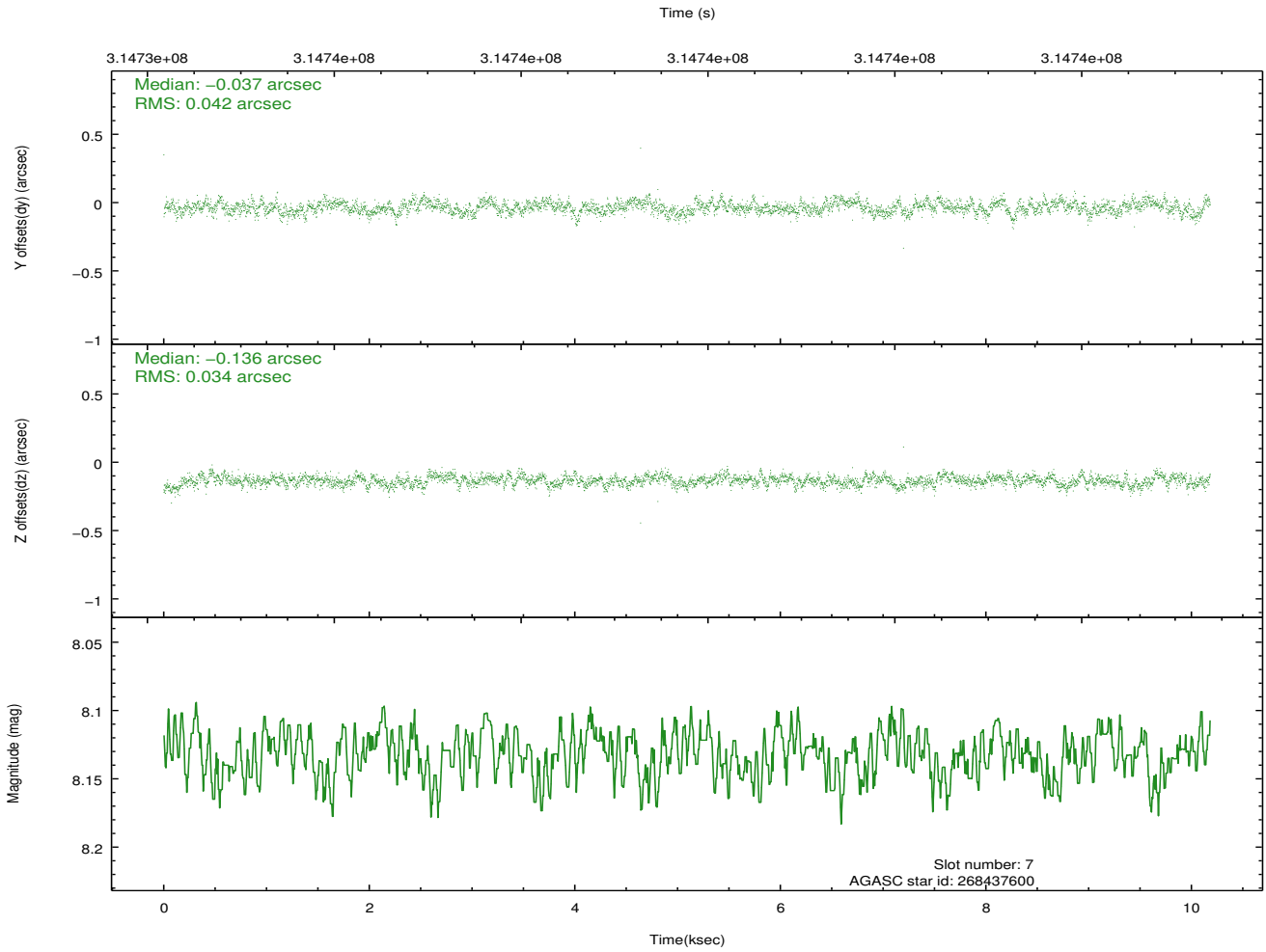
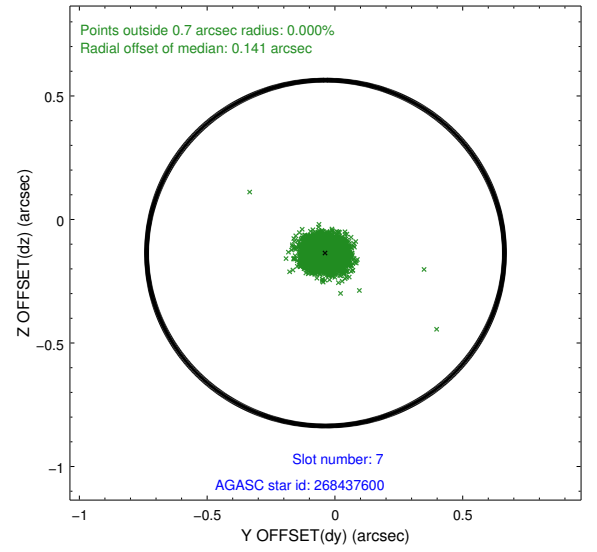
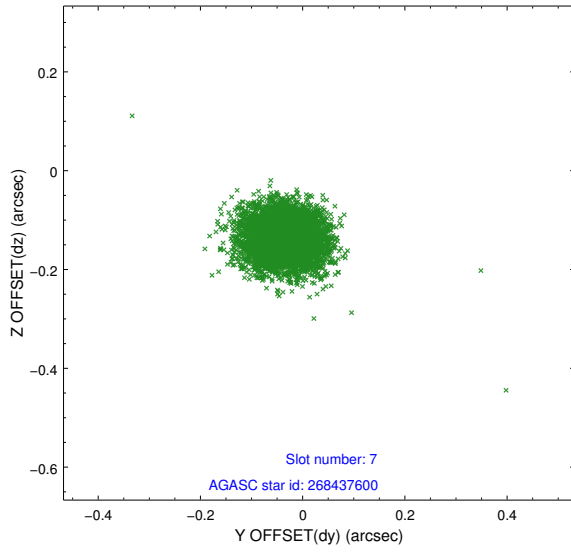
2.4.3 Slot 5



2.4.4 Slot 6

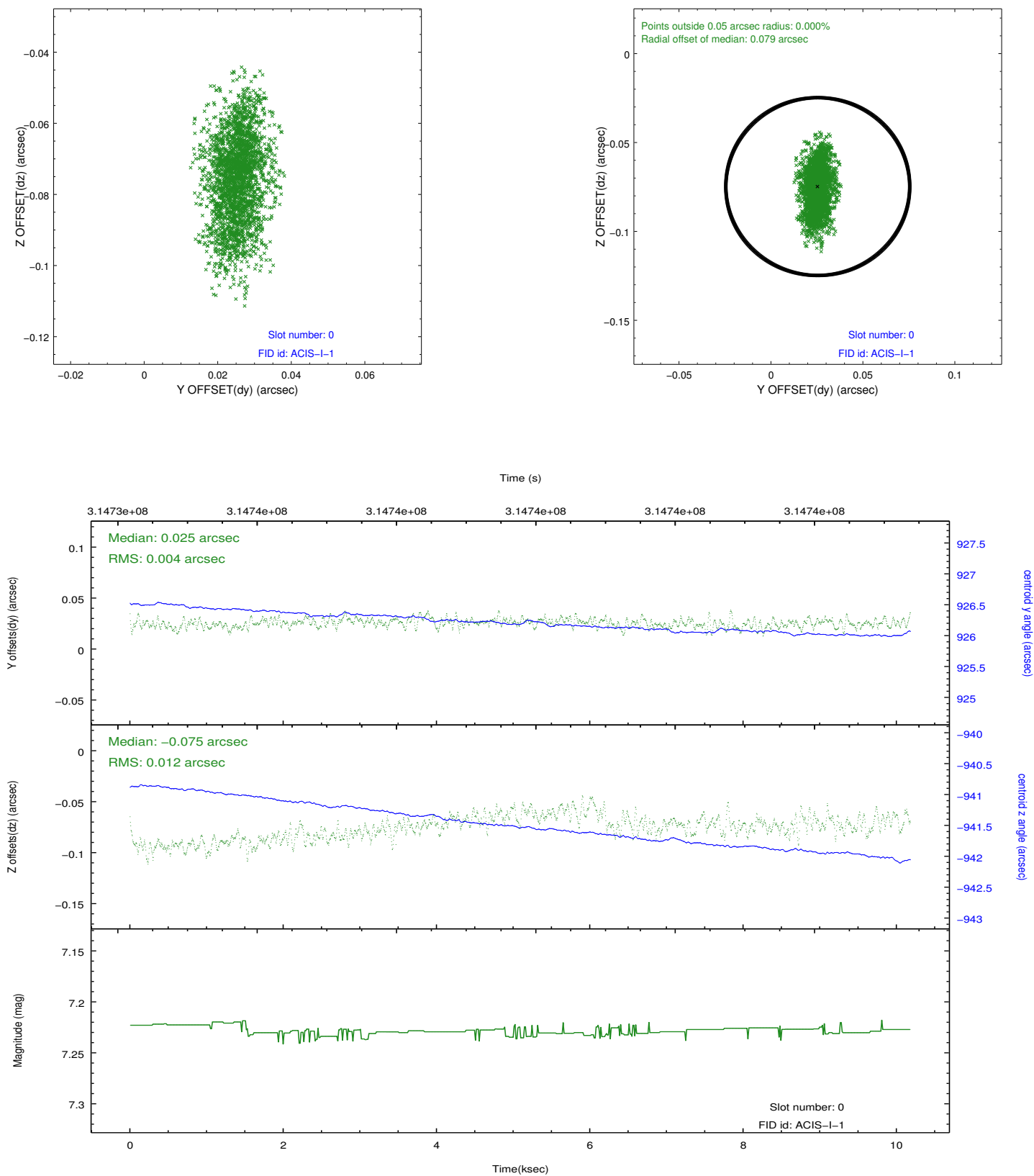


2.4.5 Slot 7

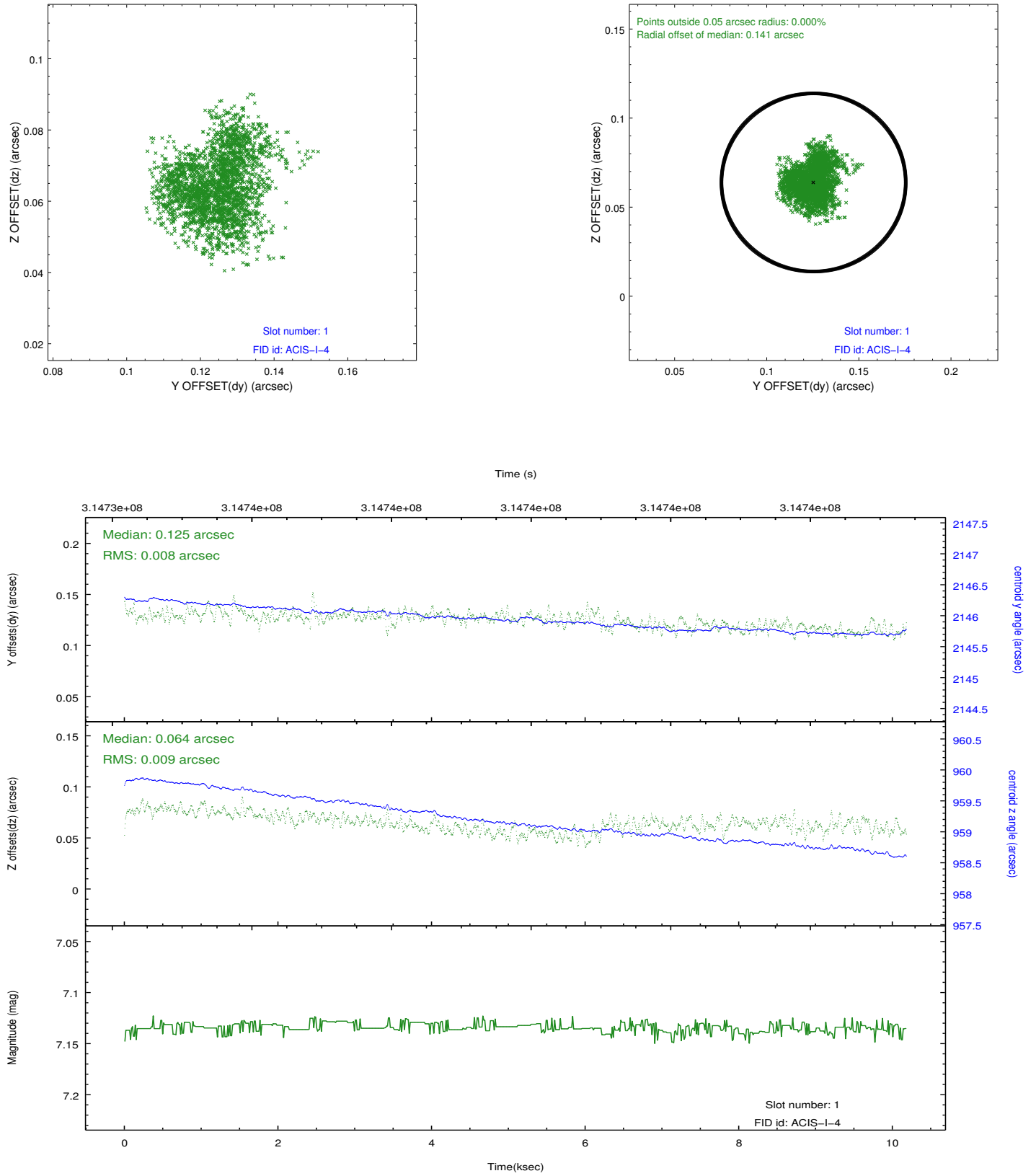


2.5 FID Slots

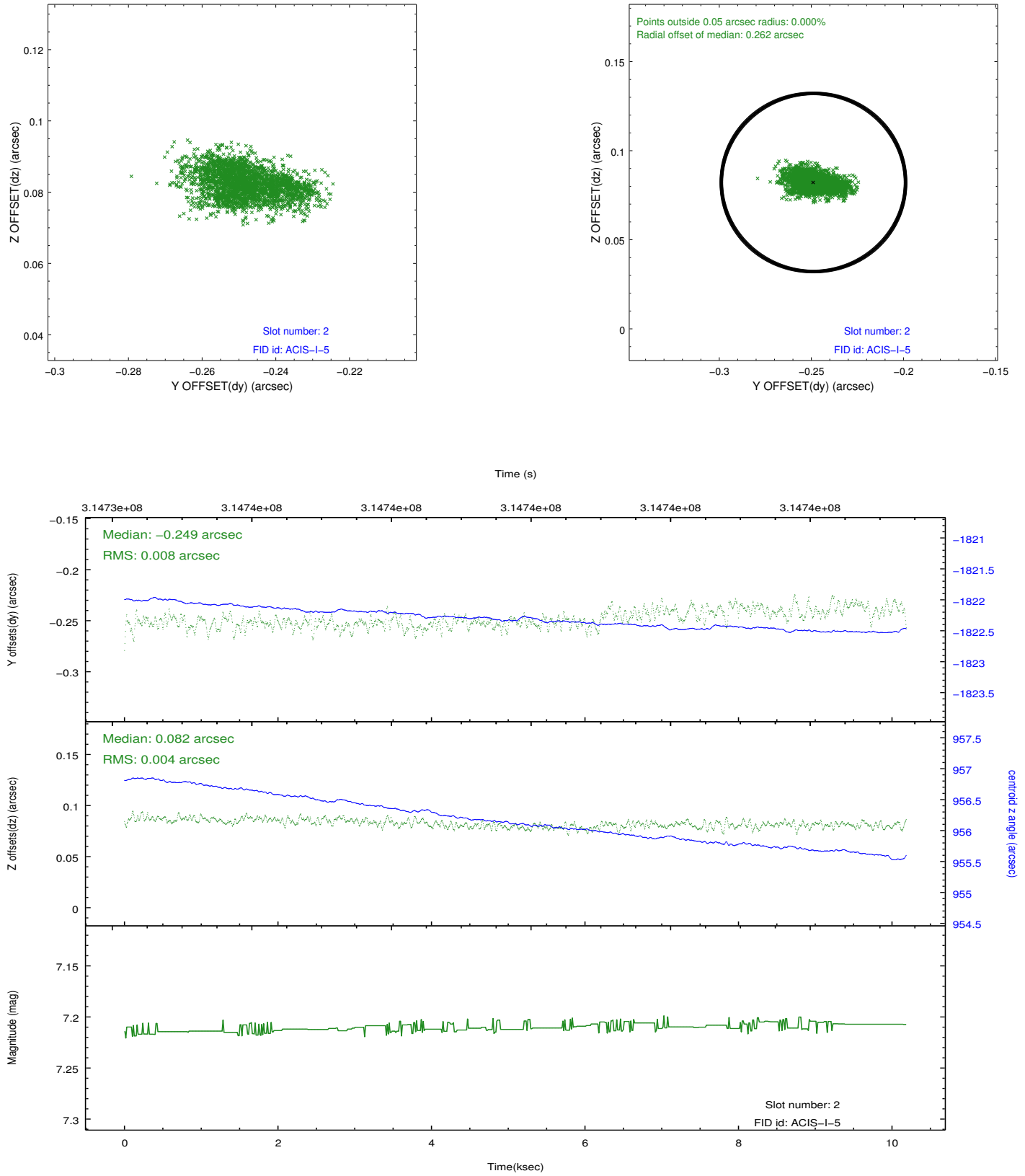
2.5.1 Slot 0



2.5.2 Slot 1



2.5.3 Slot 2



A Summary

A.1 Status

V&V Scientist	Beth Sundheim
V&V Date (YYYY-MM-DD)	2012.05.08
V&V Edition	1
V&V Disposition and Status	OK
V&V Charge Time	9.77425911

A.2 Comments