

V&V Reference Report

L2 ASCDS Version : 8.4.4

Observation 9383 - L2 Version 2
Chandra X-Ray Center

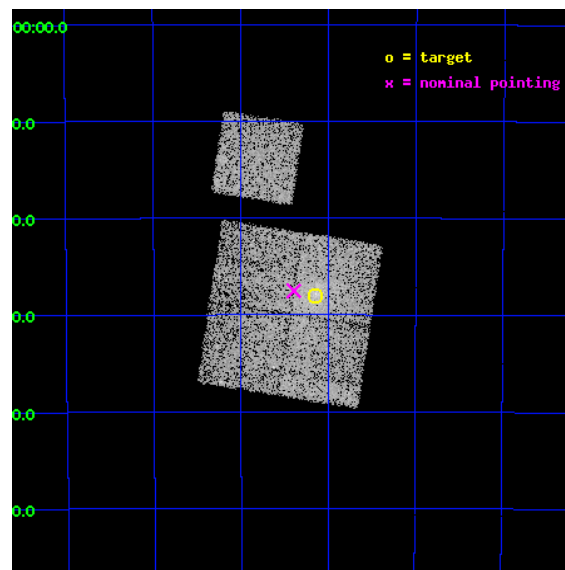
L2 Processing Date : May 20 2012

Contents

1	Front	2
2	OBI	3
2.1	OBI	3
2.1.1	Images	3
2.1.2	Bias	3
2.1.3	Parameters	4
2.1.4	Events	4
2.2	Compared Parameters	5
2.3	Aspect	6
2.4	Star Slots	9
2.4.1	Slot 3	9
2.4.2	Slot 4	10
2.4.3	Slot 5	11
2.4.4	Slot 6	12
2.4.5	Slot 7	13
2.5	FID Slots	14
2.5.1	Slot 0	14
2.5.2	Slot 1	15
2.5.3	Slot 2	16
A	Summary	17
A.1	Status	17
A.2	Comments	17

1 Front

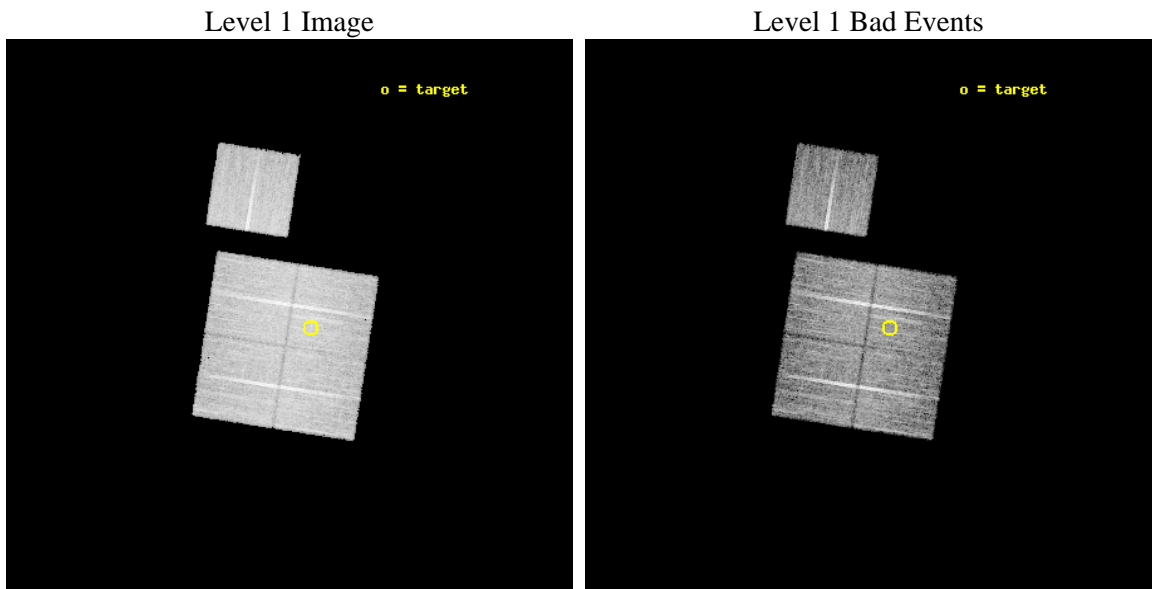
seq_num	800720	Sequence number
obs_id	9383	Observation id
title	SCALING RELATIONS FOR LOW-MASS GALAXY CLUSTERS AND GROUPS	Proposal
observer	Dr. Alexey Vikhlinin	Principal investigator
object	cl2220-5228	Source name
dtcycle	0	
cycle	P	events from which exps? Prim/Second/Both
ra_targ	335.037917	Observer's specified target RA [deg]
dec_targ	-52.466944	Observer's specified target Dec [deg]
ra_nom	335.09846065246	Nominal RA [deg]
dec_nom	-52.458897105472	Nominal Dec [deg]
roll_nom	8.8793544117793	Nominal Roll [deg]
revision	2	Processing version of data
ontime	10171.059097886	Sum of GTIs [s]
livetime	10038.166722947	Livetime [s]
ontime0	10174.200078249	Sum of GTIs [s]
ontime1	10174.200078249	Sum of GTIs [s]
ontime2	10171.0591079	Sum of GTIs [s]
ontime3	10171.059097886	Sum of GTIs [s]
ontime6	10174.200078249	Sum of GTIs [s]
l2events	39299	Number of level 2 events



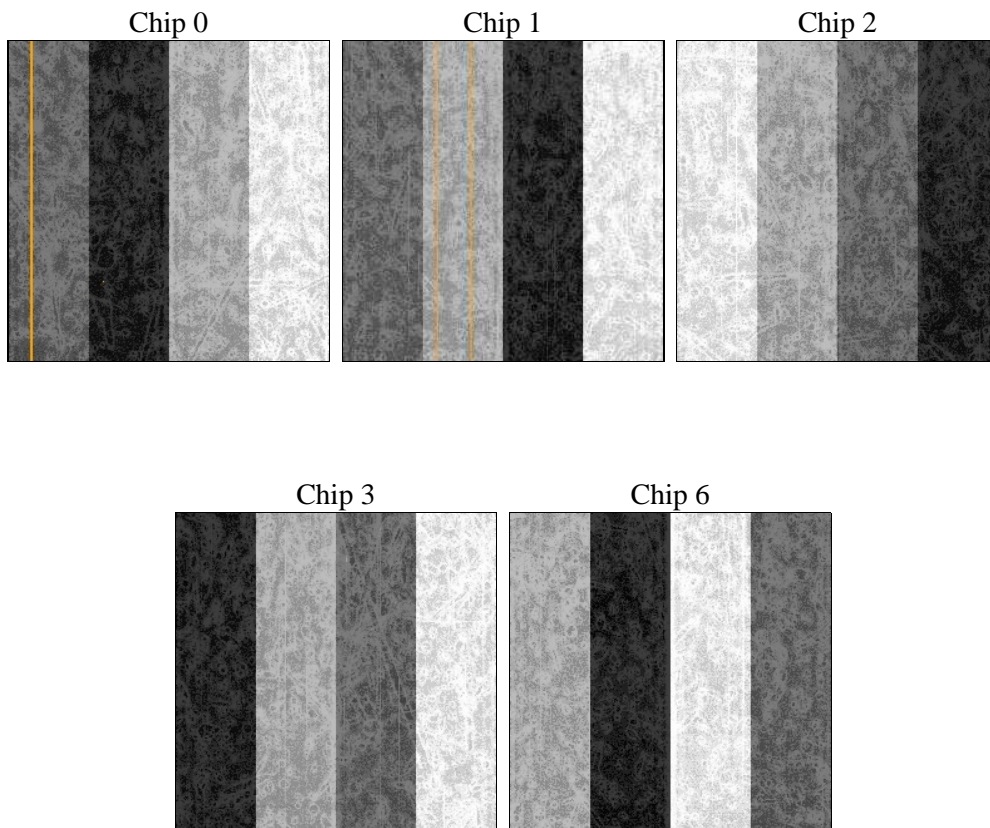
2 OBI

2.1 OBI

2.1.1 Images



2.1.2 Bias



2.1.3 Parameters

obi_num	0	Obi number	sched_exp_time	10000.000000	[s] Scheduled observation exposure time
ascdsver	8.4.4	Processing system revision	ontime	10171.059097886	Sum of GTIs [s]
caldsver	4.4.9	 	ontime0	10174.200078249	Sum of GTIs [s]
date	2012-05-20T08:45:58	Date and time of file creation	ontime1	10174.200078249	Sum of GTIs [s]
revision	2	Processing version of data	ontime2	10171.0591079	Sum of GTIs [s]
			ontime3	10171.059097886	Sum of GTIs [s]
			ontime6	10174.200078249	Sum of GTIs [s]
			l1events	408765	Number of level 1 events

2.1.4 Events

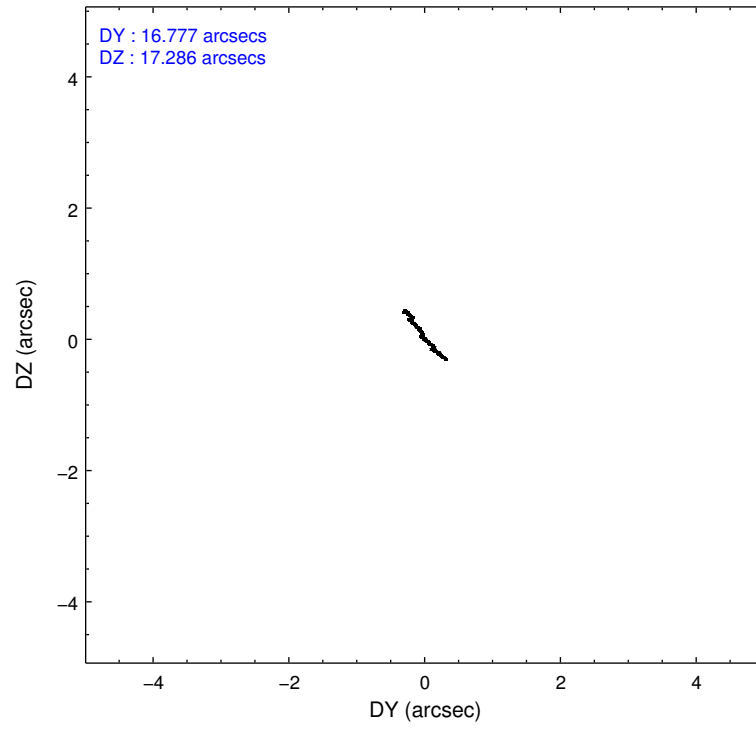
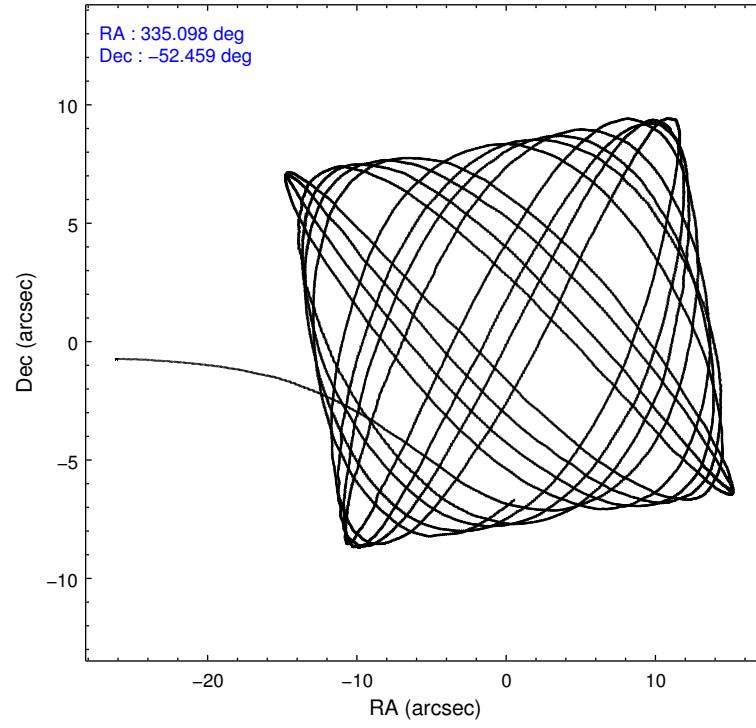
	ccd 0	ccd 1	ccd 2	ccd 3	ccd 6
level 1 events	77488	80957	87658	83513	79149
rejected events	68784	71066	79011	72942	70407
rejected %	88%	87%	90%	87%	88%

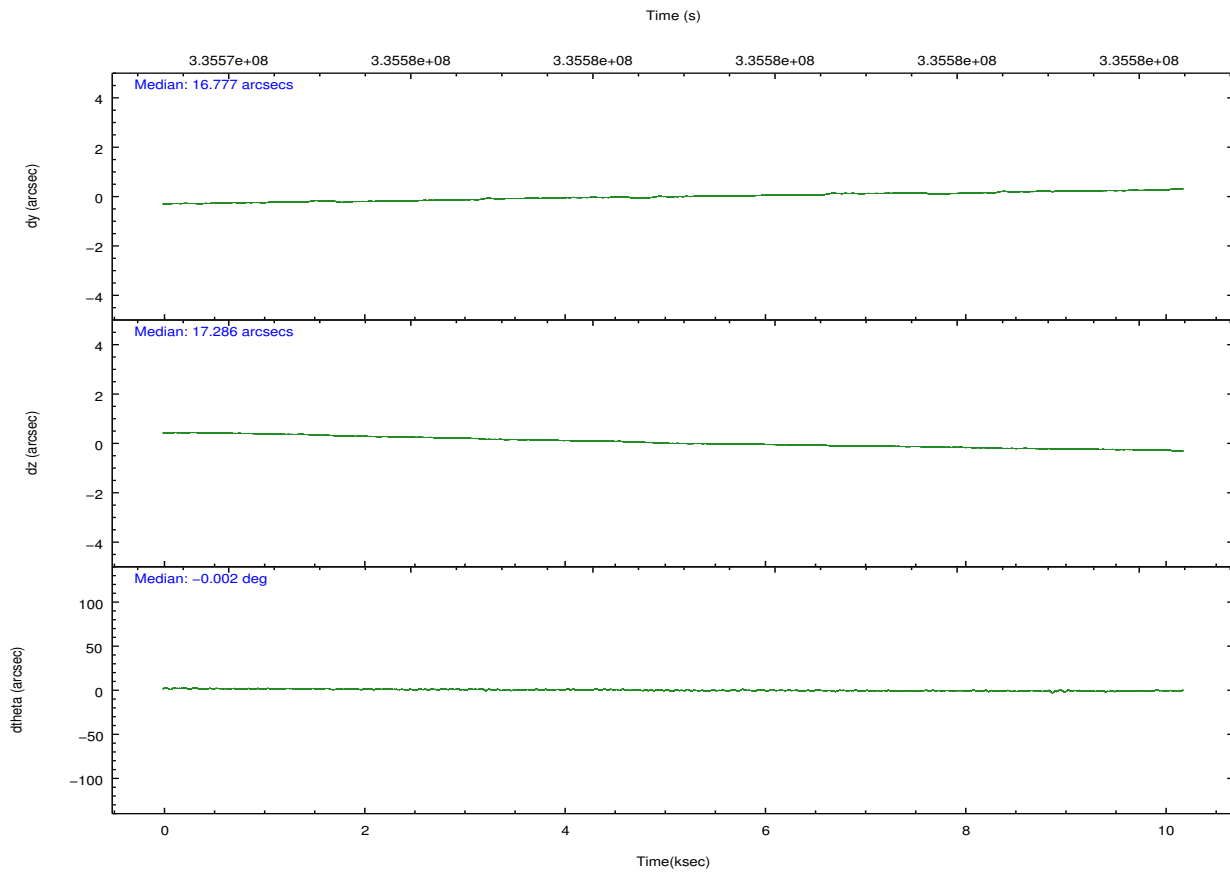
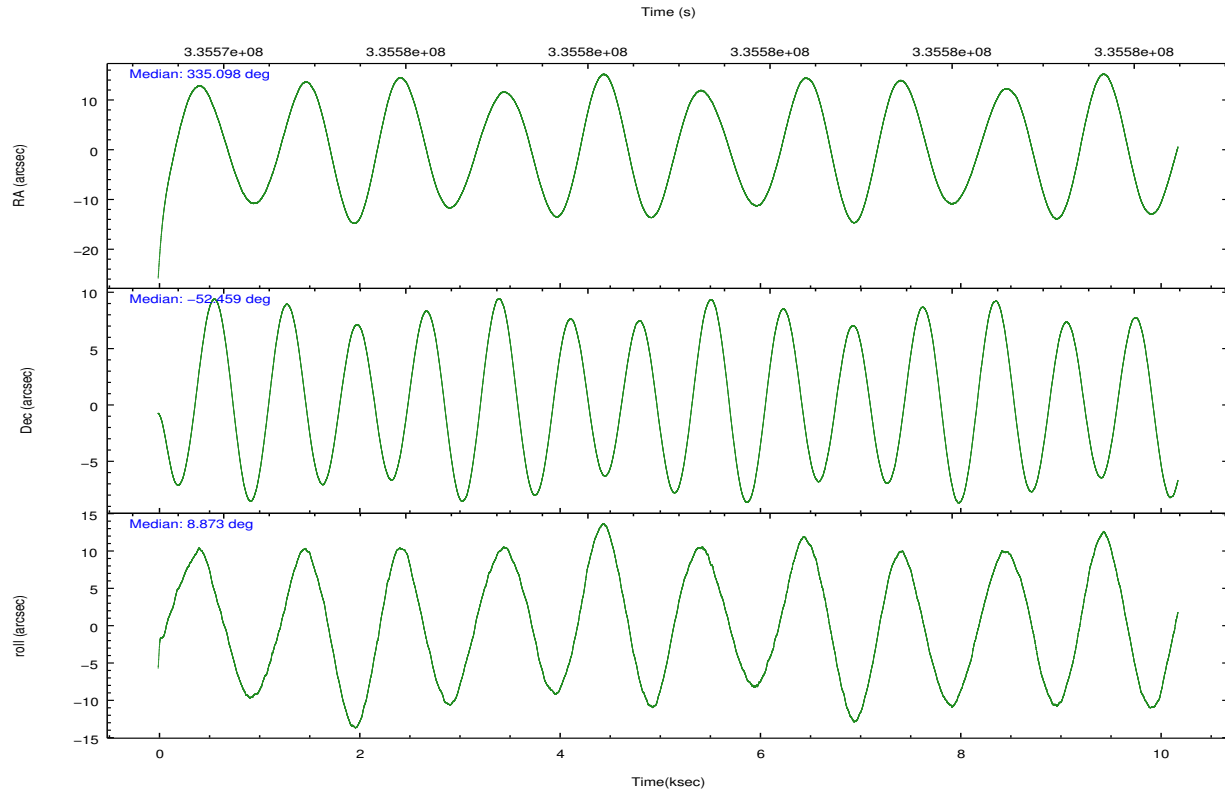
	ccd 0	ccd 1	ccd 2	ccd 3	ccd 6
grade 0 events	3246	3817	3445	5054	3138
	4%	4%	3%	6%	3%
grade 1 events	56	51	45	65	47
	0%	0%	0%	0%	0%
grade 2 events	2061	2178	2013	1996	1883
	2%	2%	2%	2%	2%
grade 3 events	982	1018	886	971	953
	1%	1%	1%	1%	1%
grade 4 events	886	1038	904	946	968
	1%	1%	1%	1%	1%
grade 5 events	2989	3278	2707	3361	3386
	3%	4%	3%	4%	4%
grade 6 events	1631	1940	1485	1704	1888
	2%	2%	1%	2%	2%
grade 7 events	65637	67637	76173	69416	66886
	84%	83%	86%	83%	84%

2.2 Compared Parameters

Parameter	Planned	Actual	Parameter	Planned	Actual
Instrument	ACIS	ACIS	Obspar format version number	7	7
Detector	ACIS-01236	ACIS-01236	Obspar file type	PREDICTED	ACTUAL
Grating	NONE	NONE	Obspar update status	NONE	UPDATED
Data mode	VFAINT	VFAINT	CCD I0 on	Y	Y
Observation mode	POINTING	POINTING	CCD I1 on	Y	Y
[deg] Pointing RA	335.063472	335.0984606524639	CCD I2 on	Y	Y
[deg] Pointing Dec	-52.476213	-52.45889710547155	CCD I3 on	Y	Y
[deg] Pointing Roll	8.642908	8.879354411779349	CCD S0 on	N	N
[mm] SIM focus pos	-0.782348	-0.7809083437167272	CCD S1 on	N	N
[mm] SIM defocus	0	0.001439871863259334	CCD S2 on	O1	Y
[mm] SIM translation stage pos	-228.592463	-228.6015472178352	CCD S3 on	N	N
[mm] SIM translation stage offset	-5	-4.990905785094469	CCD S4 on	N	N
[s] Observation start time (MET)	335573960.184000	335572920.26428	CCD S5 on	N	N
Observation start date	2008-08-19T22:58:15	2008-08-19T22:42:00	Number of optional ACIS chips dropped	0	0
[s] Observation end time (MET)	335583960.184000	335584789.25236	On-chip summing requested	N	N
Observation end date	2008-08-20T01:44:55	2008-08-20T01:59:49	Subarray requested	NONE	NONE
Read mode	TIMED	TIMED	Alternating exposures requested	N	N
			[s] Primary exposure time	0.000000	3.1

2.3 Aspect



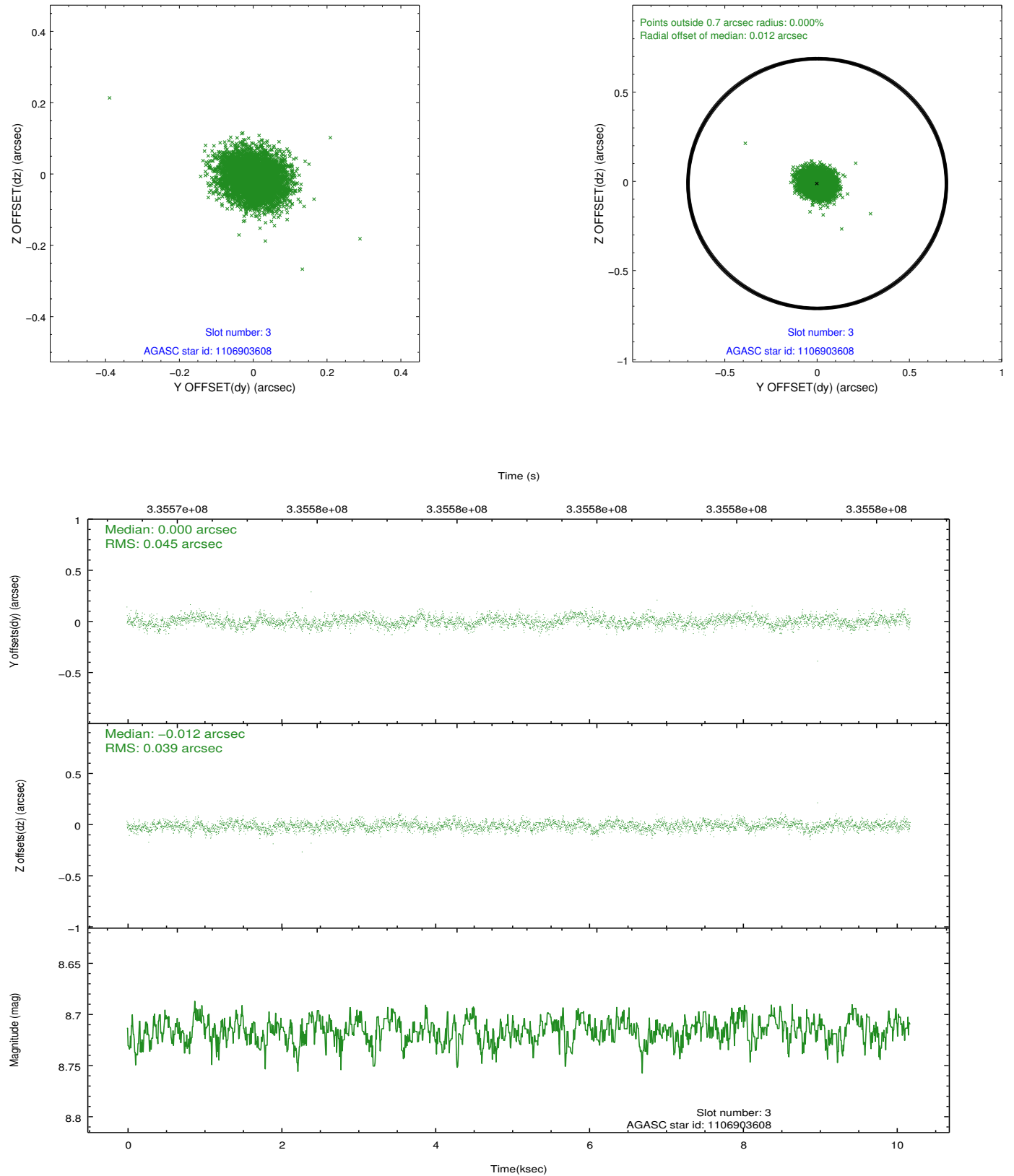


Slot Statistics

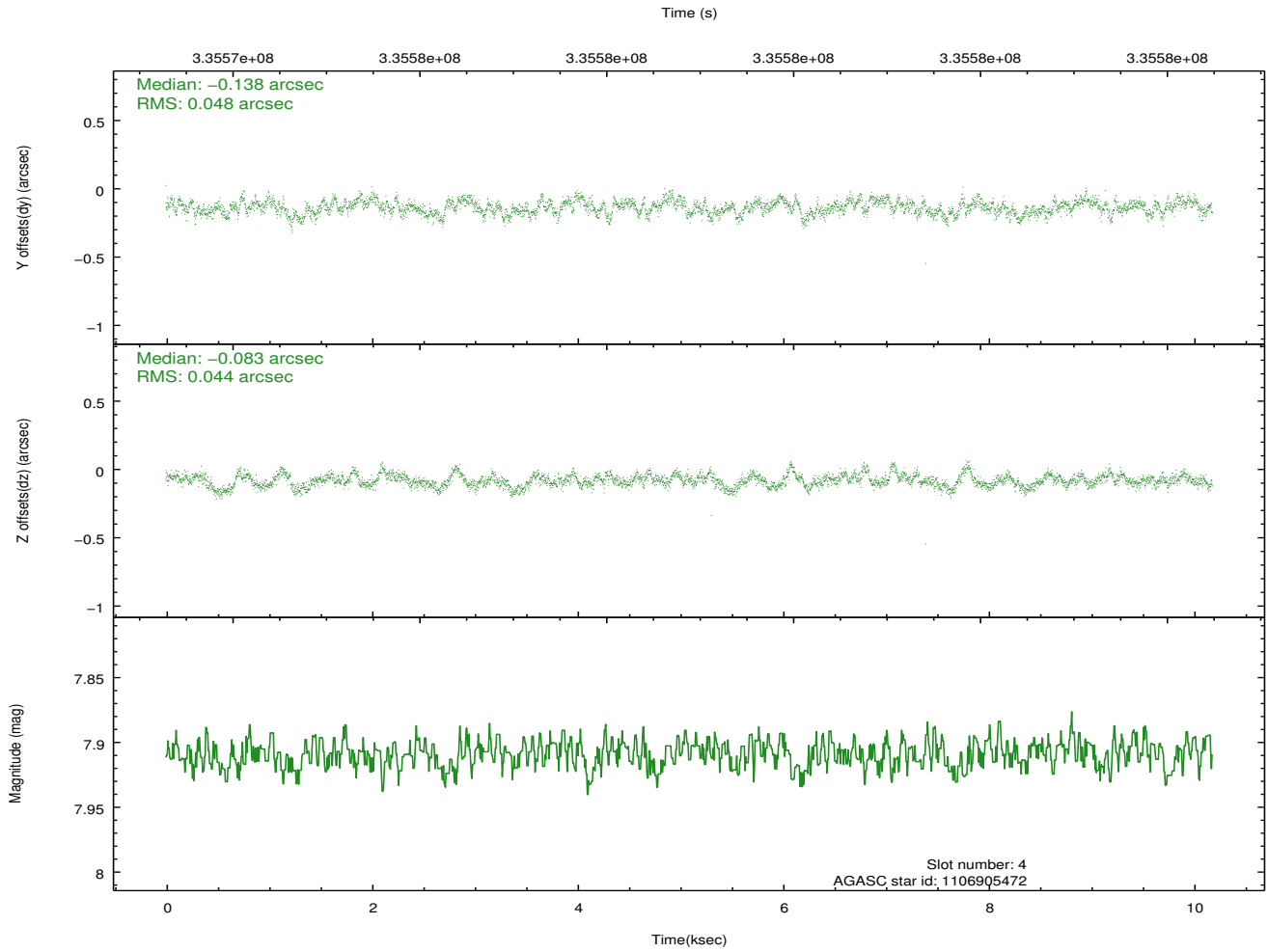
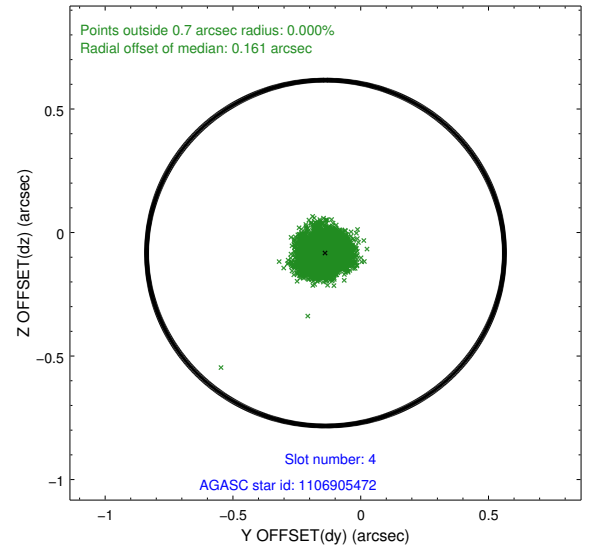
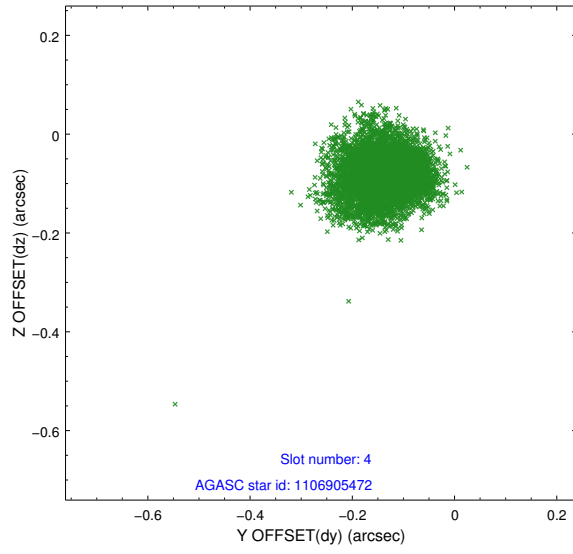
slot	status	id	mag	n_pts	med_dy	med_dz	dr1	dr2	ra	dec	mean_y	mean_z
0	FID	ACIS-I-1	7.03	2484	0.077	-0.047	0.009	0.016	0.000000	0.000000	922.63	-943.46
1	FID	ACIS-I-5	7.01	2484	-0.226	0.074	0.010	0.015	0.000000	0.000000	-1825.51	953.84
2	FID	ACIS-I-6	7.03	2484	0.057	0.043	0.012	0.019	0.000000	0.000000	387.57	1598.91
3	GUIDE	1106903608	8.72	4966	0.000	-0.012	0.062	0.101	335.804942	-52.065395	1843.53	1207.74
4	GUIDE	1106905472	7.91	4965	-0.138	-0.083	0.070	0.111	333.959376	-52.158506	-2241.18	1478.96
5	GUIDE	1156322080	9.30	4962	0.110	-0.042	0.091	0.146	336.028355	-52.914597	1831.74	-1888.19
6	GUIDE	1156323104	9.45	4962	0.026	-0.075	0.102	0.162	335.661390	-52.780663	1122.55	-1284.64
7	GUIDE	1156324896	9.27	4958	0.001	0.215	0.088	0.140	334.141564	-52.628198	-2074.94	-251.12

2.4 Star Slots

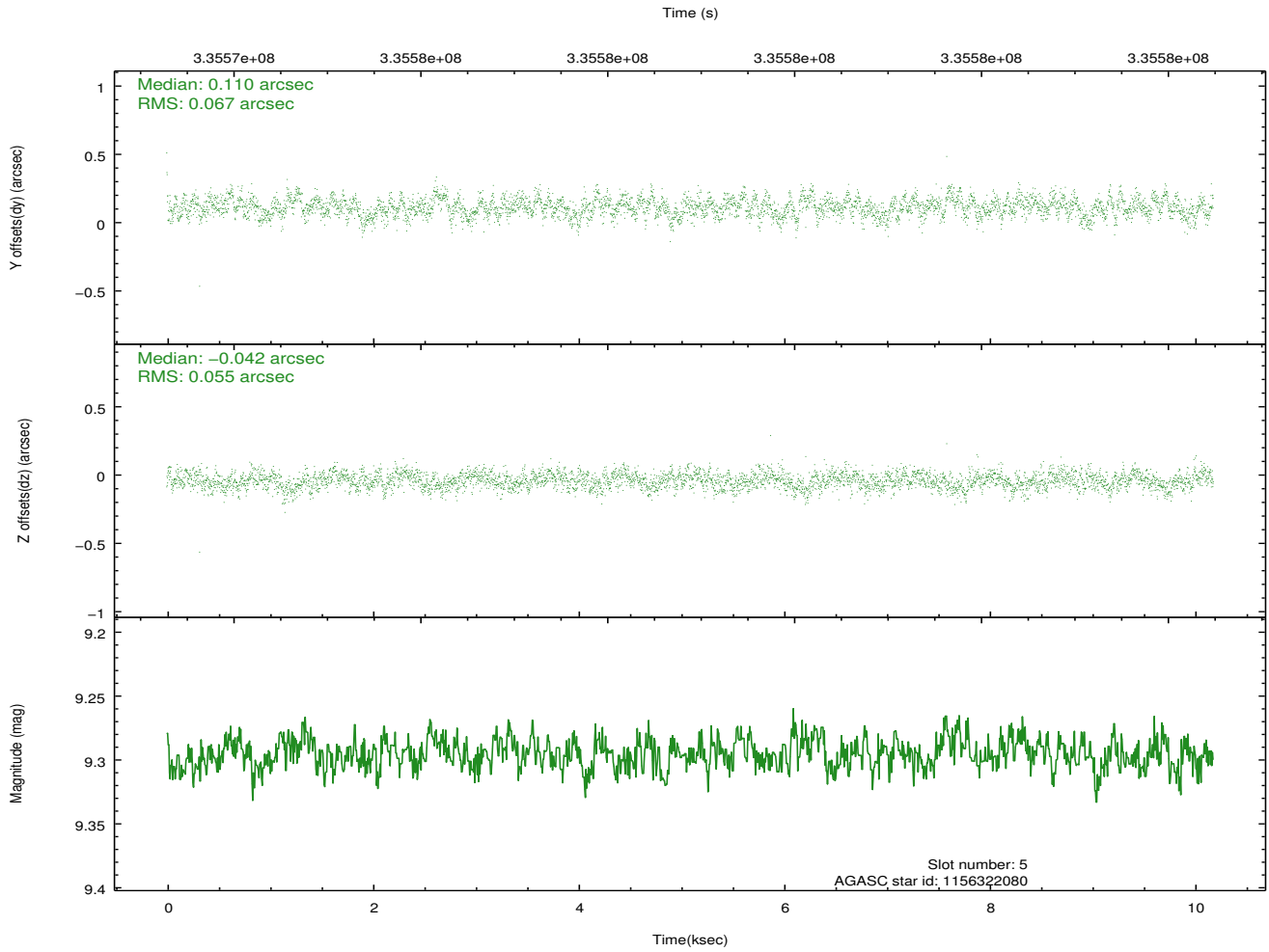
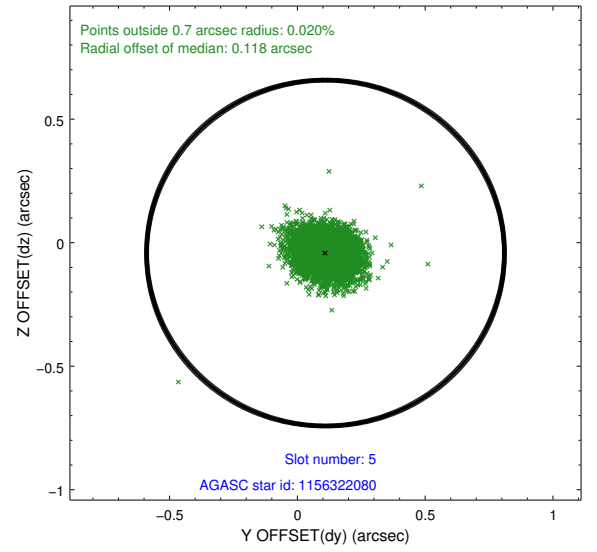
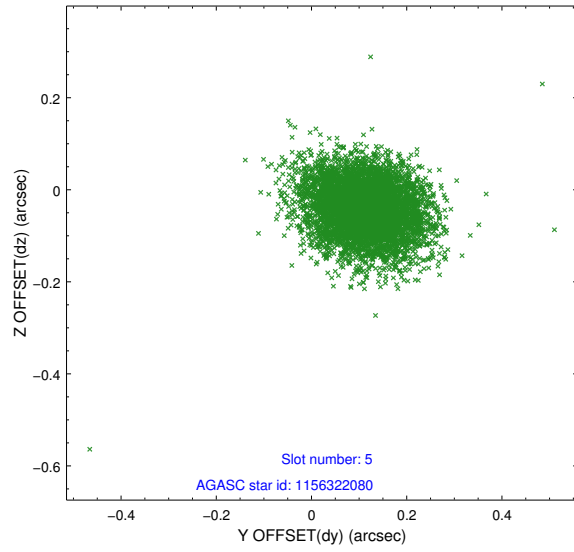
2.4.1 Slot 3



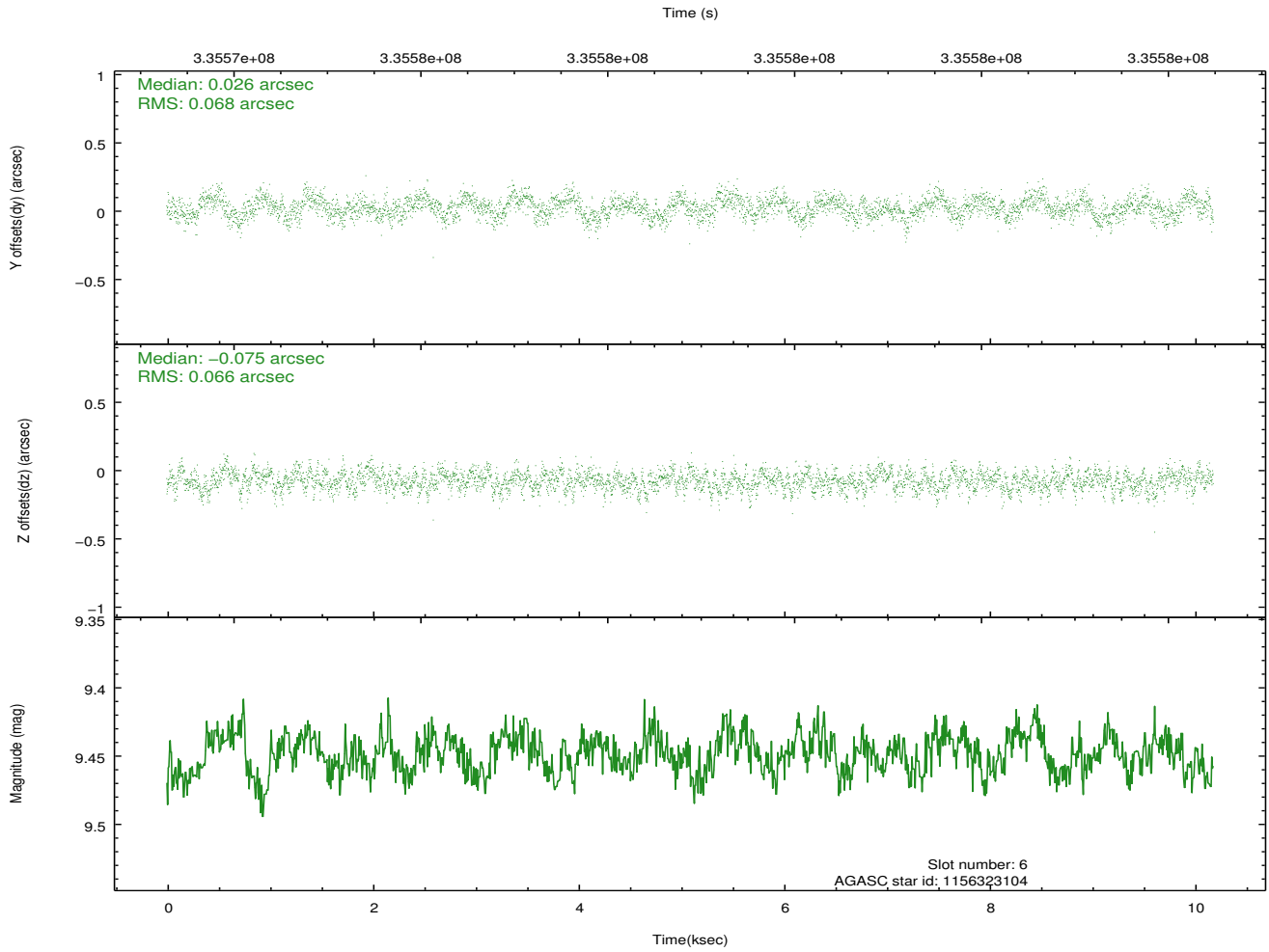
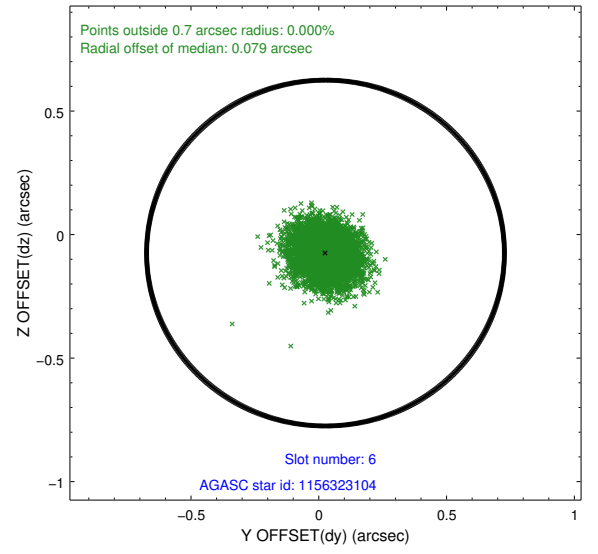
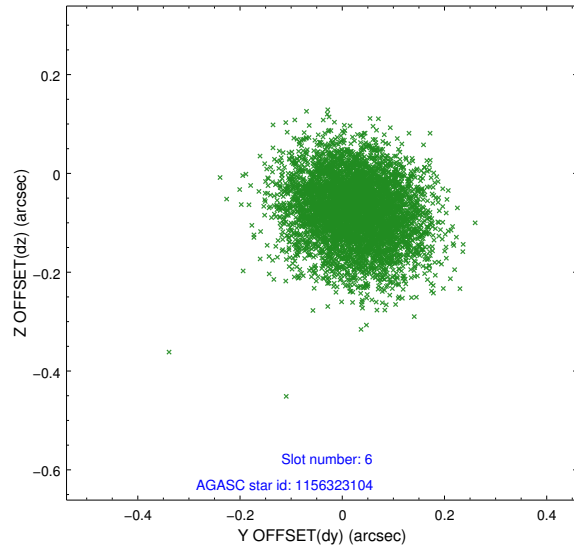
2.4.2 Slot 4



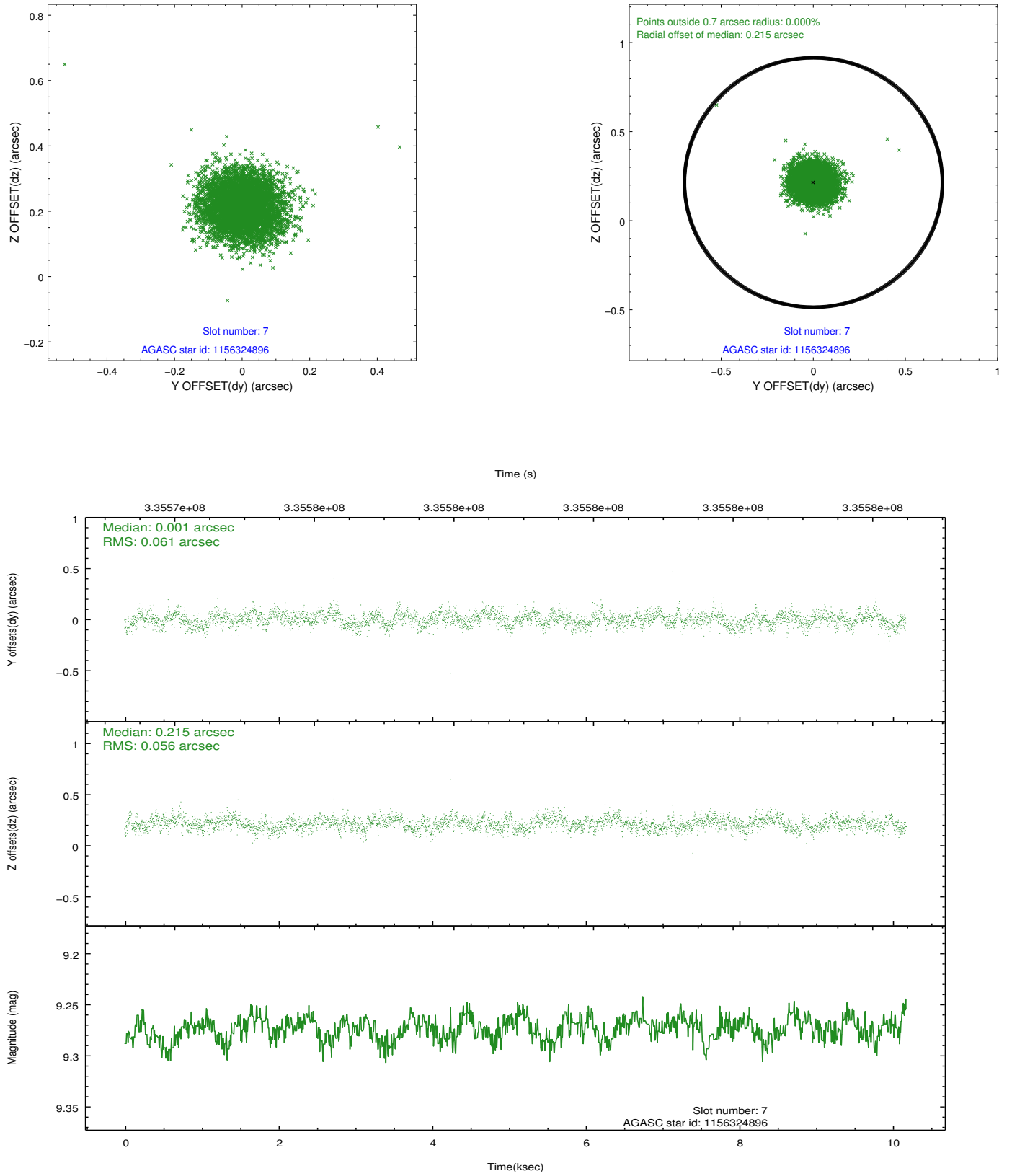
2.4.3 Slot 5



2.4.4 Slot 6

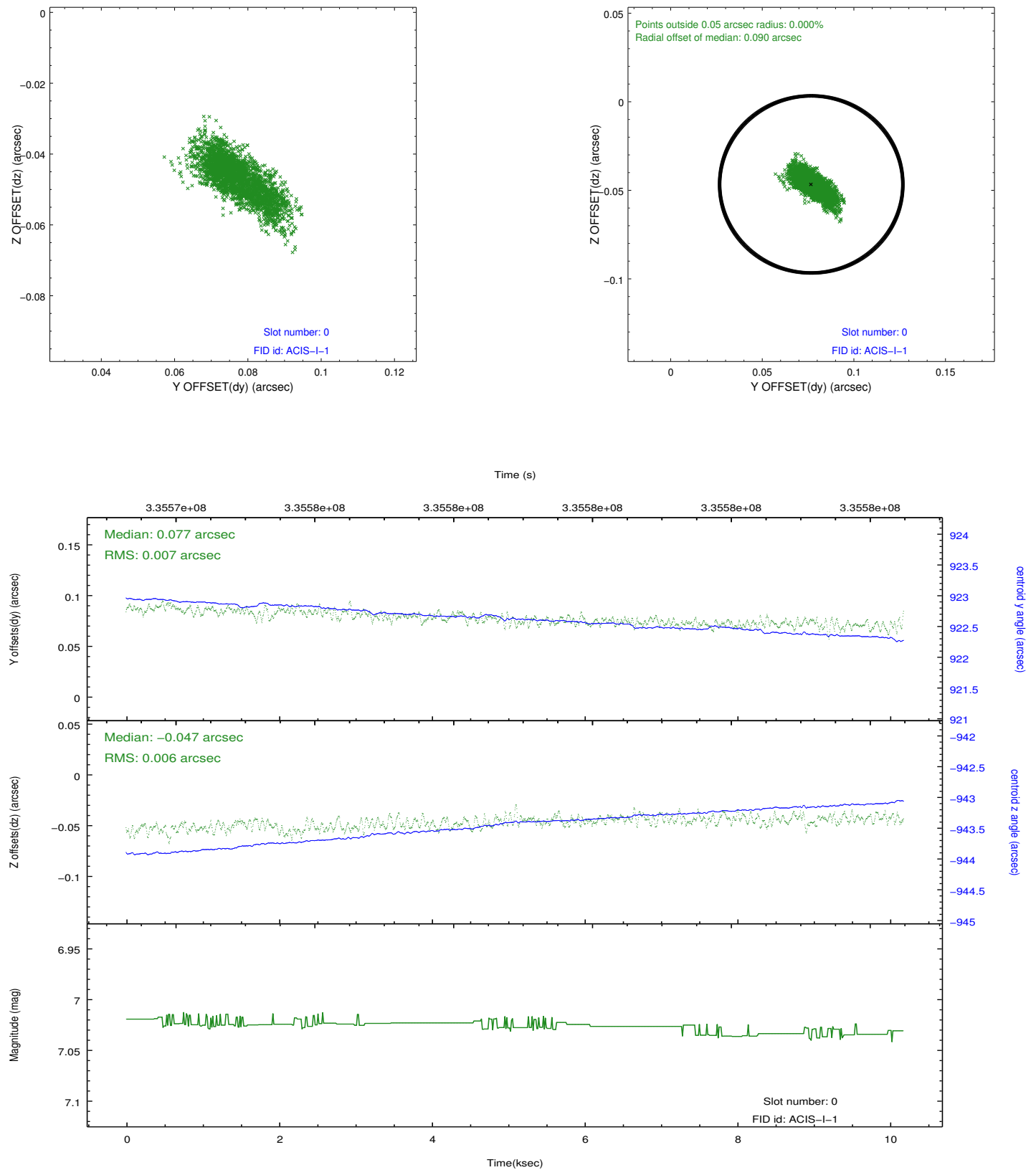


2.4.5 Slot 7

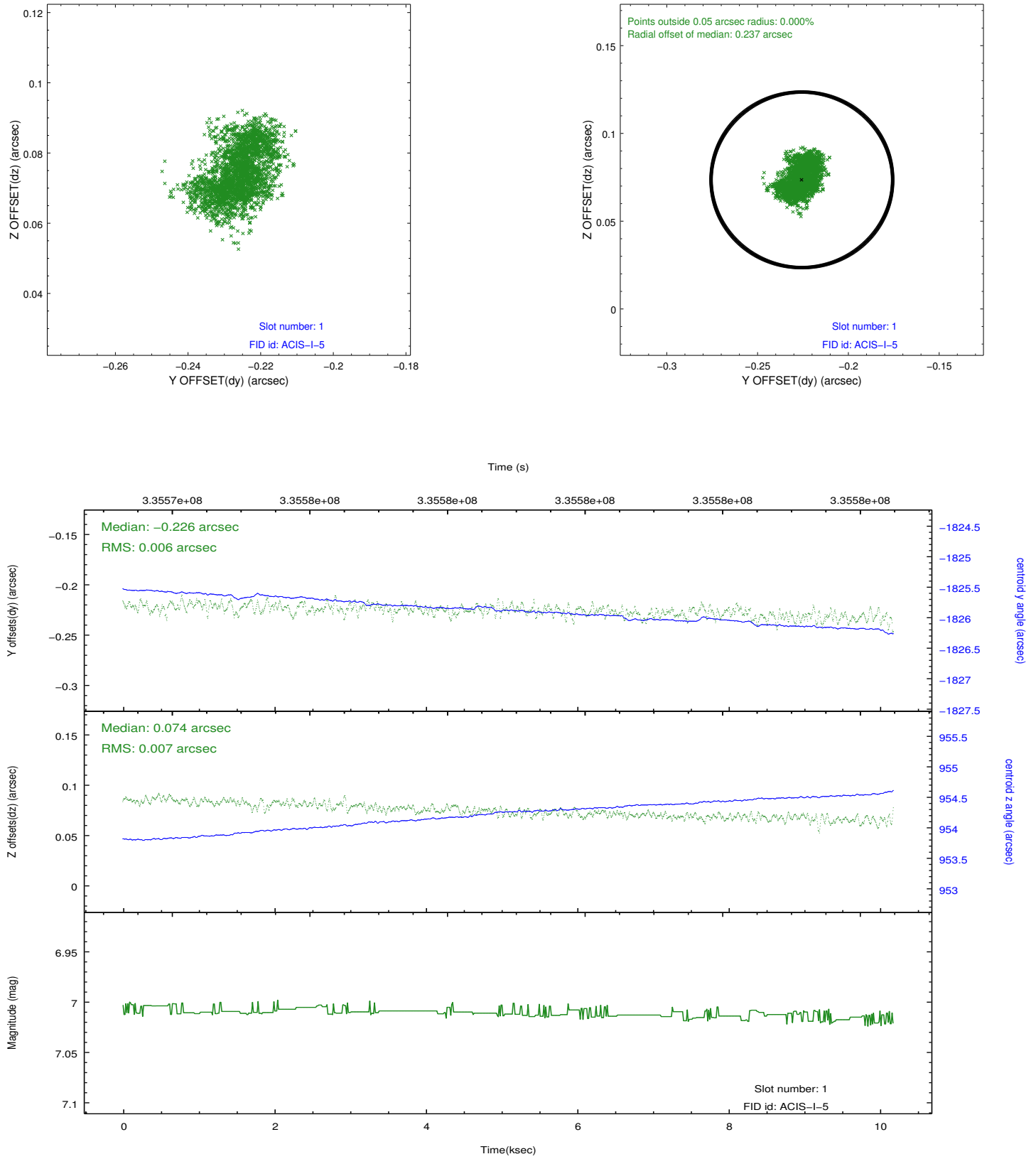


2.5 FID Slots

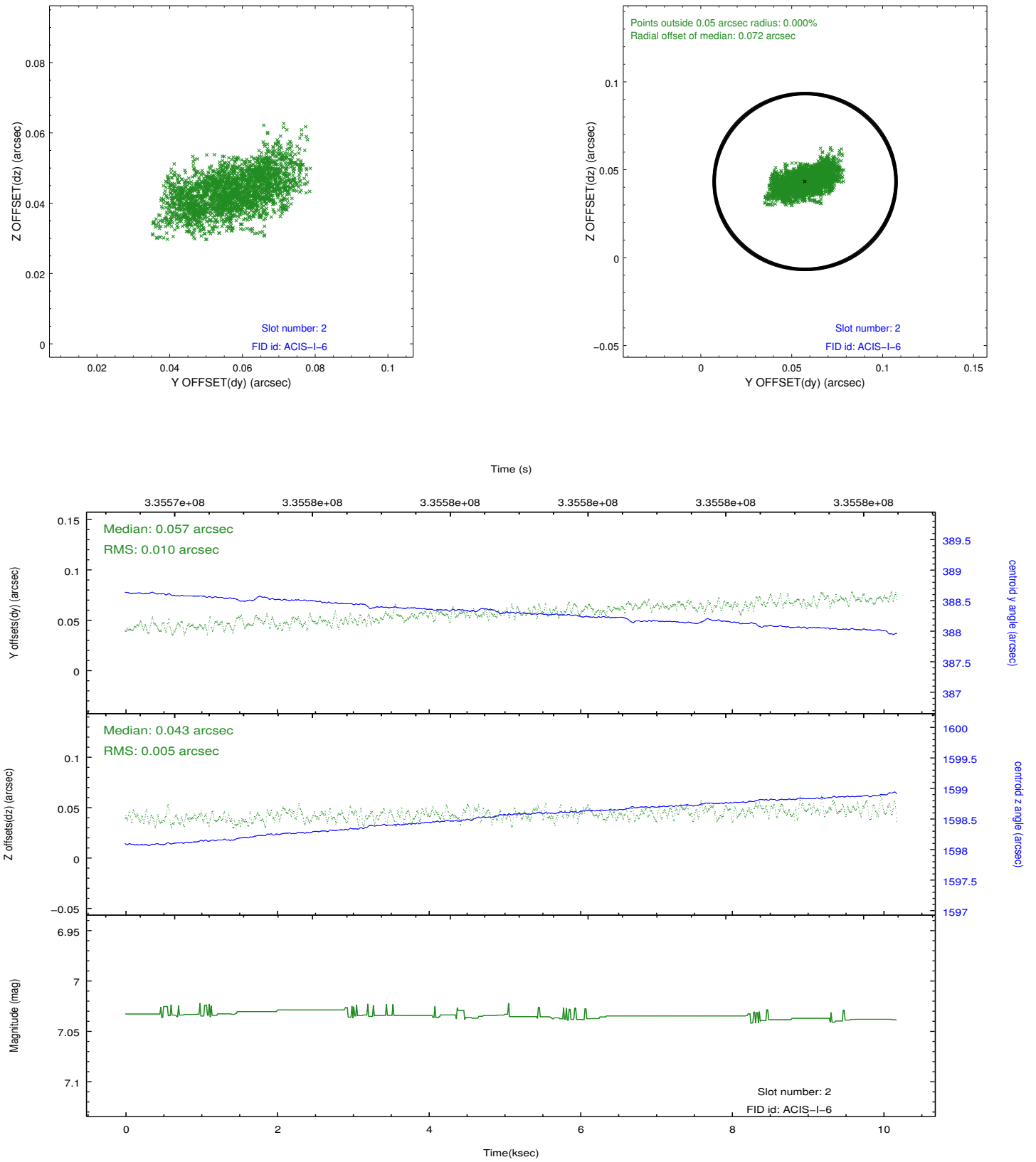
2.5.1 Slot 0



2.5.2 Slot 1



2.5.3 Slot 2



A Summary

A.1 Status

V&V Scientist	Jen Lauer
V&V Date (YYYY-MM-DD)	2012.05.29
V&V Edition	1
V&V Disposition and Status	OK
V&V Charge Time	10.171059

A.2 Comments