

V&V Reference Report

L2 ASCDS Version : 8.4.4

Observation 9375 - L2 Version 2
Chandra X-Ray Center

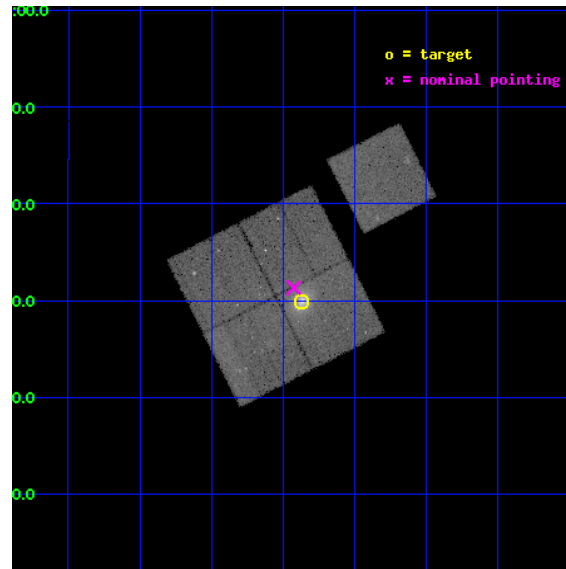
L2 Processing Date : May 9 2012

Contents

1	Front	2
2	OBI	3
2.1	OBI	3
2.1.1	Images	3
2.1.2	Bias	3
2.1.3	Parameters	4
2.1.4	Events	4
2.2	Compared Parameters	5
2.3	Aspect	6
2.4	Star Slots	9
2.4.1	Slot 3	9
2.4.2	Slot 4	10
2.4.3	Slot 5	11
2.4.4	Slot 6	12
2.4.5	Slot 7	13
2.5	FID Slots	14
2.5.1	Slot 0	14
2.5.2	Slot 1	15
2.5.3	Slot 2	16
A	Summary	17
A.1	Status	17
A.2	Comments	17

1 Front

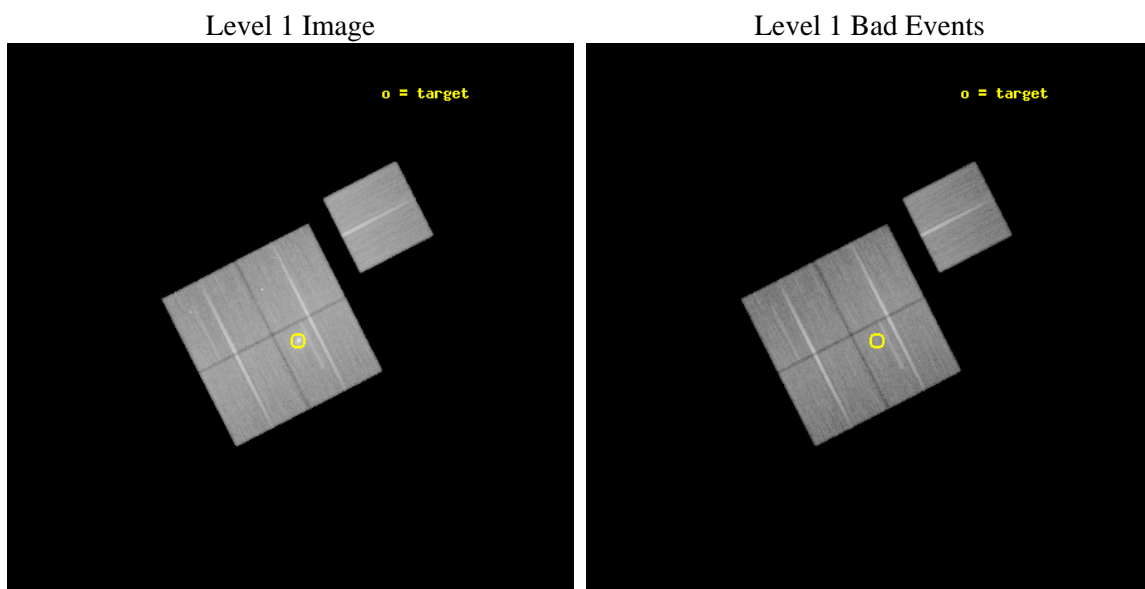
seq_num	800712	Sequence number
obs_id	9375	Observation id
title	Probing Dark Energy with Relaxed Galaxy Clusters	Proposal title
observer	Prof. Steven Allen	Principal investigator
object	MACS1115	Source name
dtcycle	0	
cycle	P	events from which exps? Prim/Second/Both
ra_targ	168.967083	Observer's specified target RA [deg]
dec_targ	1.498028	Observer's specified target Dec [deg]
ra_nom	168.98129955599	Nominal RA [deg]
dec_nom	1.5218697425854	Nominal Dec [deg]
roll_nom	62.974732284476	Nominal Roll [deg]
revision	2	Processing version of data
ontime	40154.136237979	Sum of GTIs [s]
livetime	39629.492886985	Livetime [s]
ontime0	40157.277268231	Sum of GTIs [s]
ontime1	40157.277278066	Sum of GTIs [s]
ontime2	40163.559308589	Sum of GTIs [s]
ontime3	40154.136237979	Sum of GTIs [s]
ontime6	40163.559298515	Sum of GTIs [s]
l2events	163935	Number of level 2 events



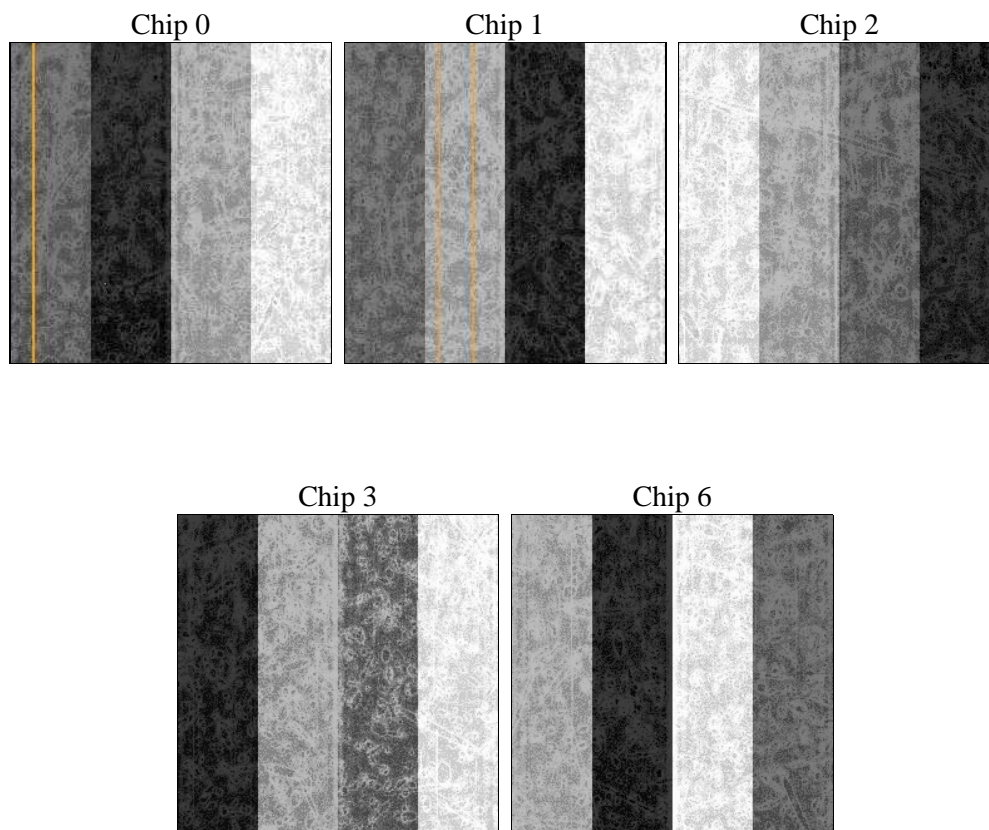
2 OBI

2.1 OBI

2.1.1 Images



2.1.2 Bias



2.1.3 Parameters

obi_num	0	Obi number	sched_exp_time	40000.000000	[s] Scheduled observation exposure time
ascdsver	8.4.4	Processing system revision	ontime	40154.136237979	Sum of GTIs [s]
caldbver	4.4.9	 	ontime0	40157.277268231	Sum of GTIs [s]
date	2012-05-09T03:48:25	Date and time of file creation	ontime1	40157.277278066	Sum of GTIs [s]
revision	2	Processing version of data	ontime2	40163.559308589	Sum of GTIs [s]
			ontime3	40154.136237979	Sum of GTIs [s]
			ontime6	40163.559298515	Sum of GTIs [s]
			l1events	1657941	Number of level 1 events

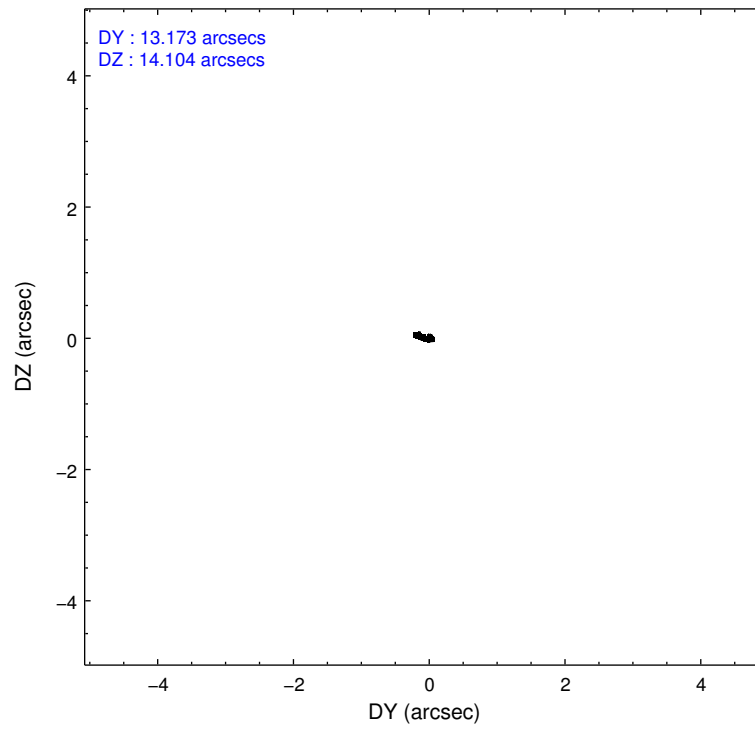
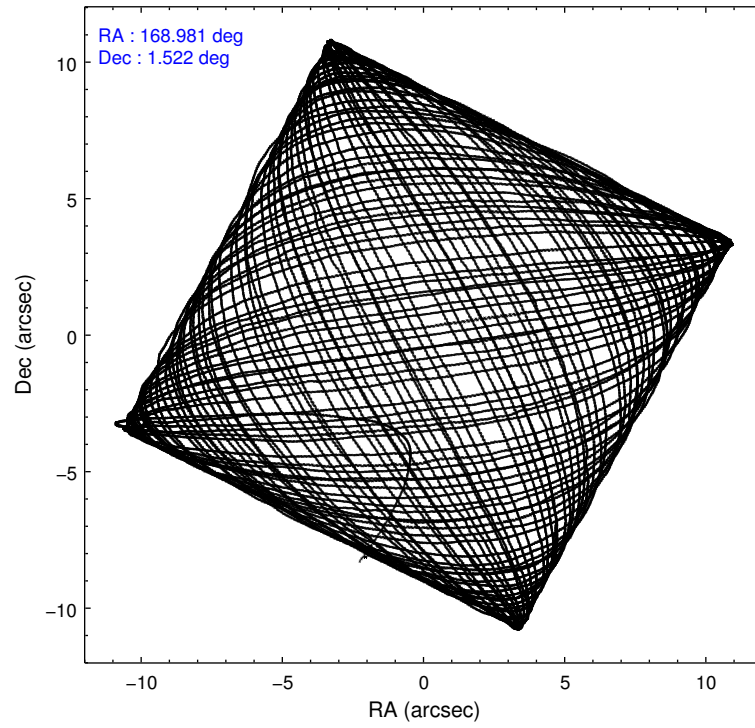
2.1.4 Events

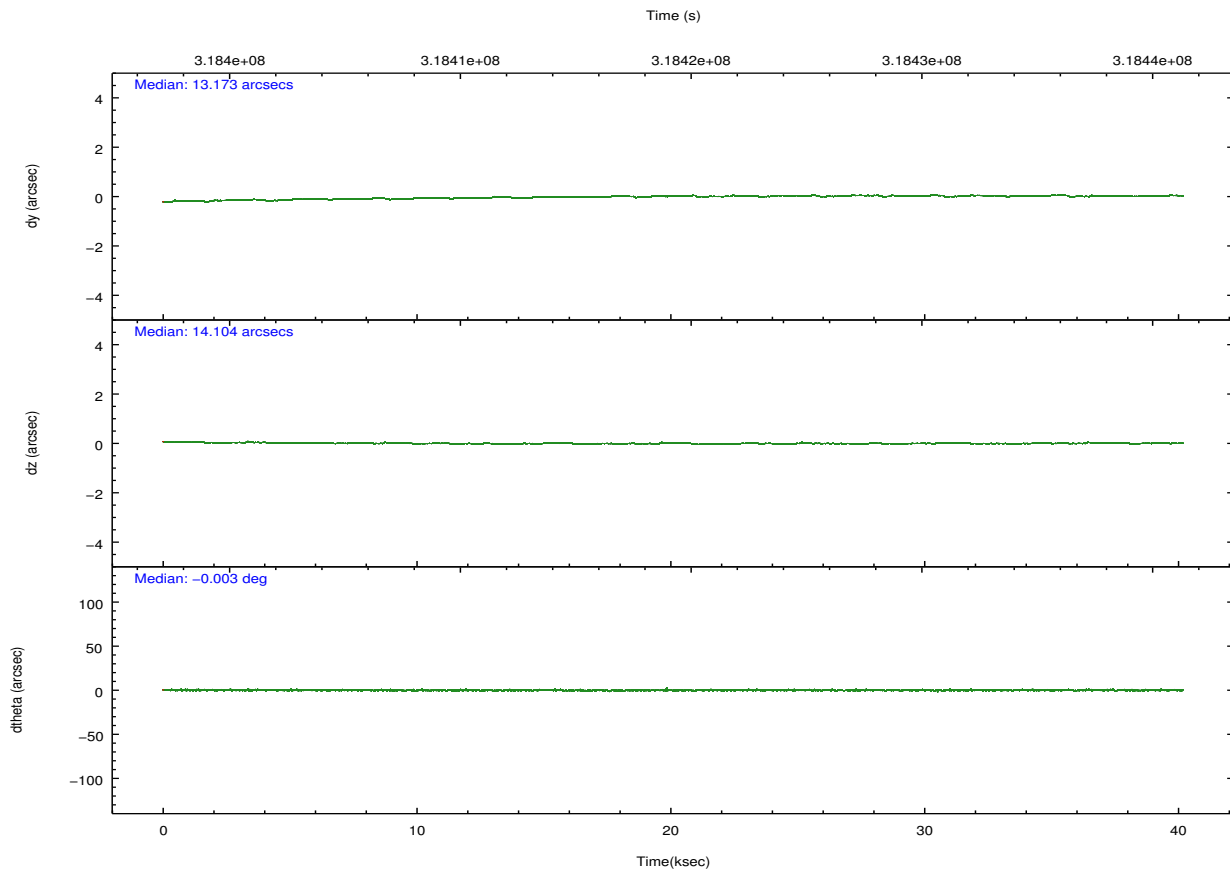
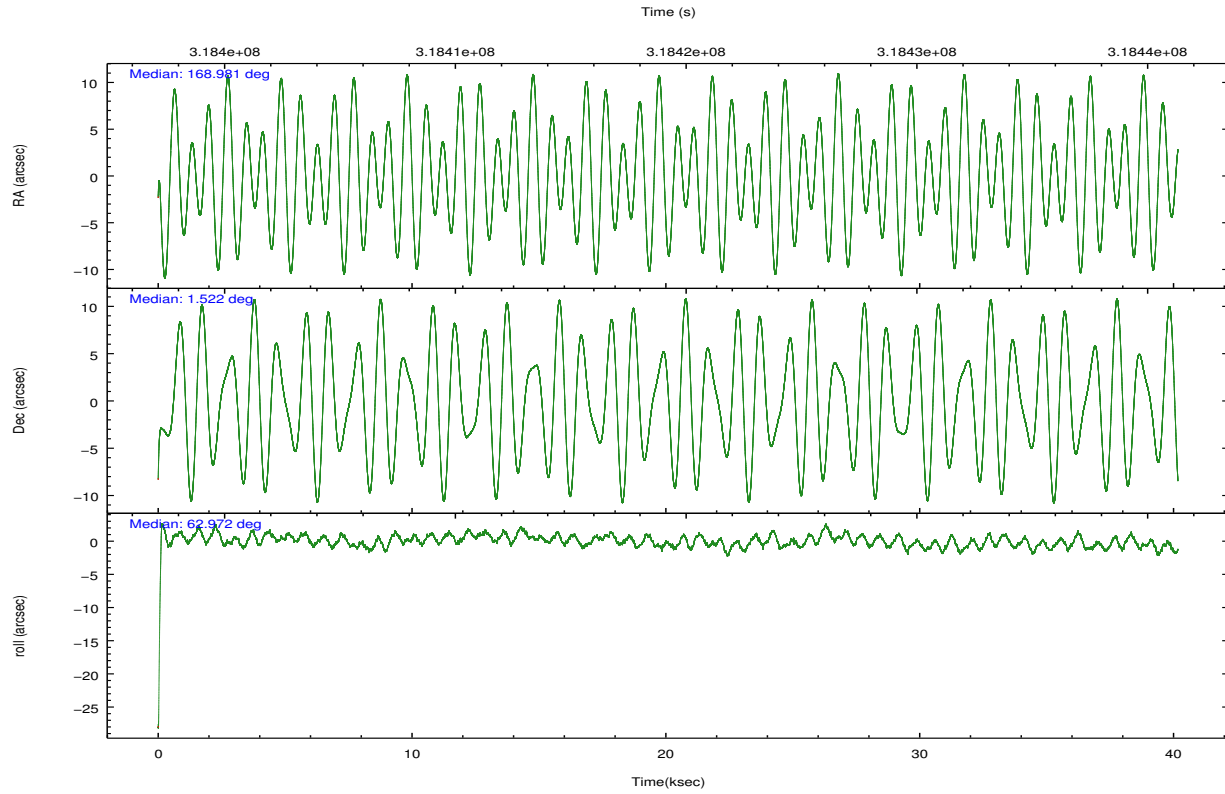
	ccd 0	ccd 1	ccd 2	ccd 3	ccd 6		ccd 0	ccd 1	ccd 2	ccd 3	ccd 6
level 1 events	309205	313622	349042	349465	336607	grade 0 events	12444	13801	14068	29615	12023
rejected events	275589	276460	314223	295854	303008		4%	4%	4%	8%	3%
rejected %	89%	88%	90%	84%	90%	grade 1 events	189	184	239	322	168
							0%	0%	0%	0%	0%
						grade 2 events	7887	8364	7864	9168	7493
							2%	2%	2%	2%	2%
						grade 3 events	3667	3965	3413	4128	3550
							1%	1%	0%	1%	1%
						grade 4 events	3397	3854	3583	4200	3582
							1%	1%	1%	1%	1%
						grade 5 events	11467	12479	10937	13146	12852
							3%	3%	3%	3%	3%
						grade 6 events	6419	7400	6121	6783	7180
							2%	2%	1%	1%	2%
						grade 7 events	263735	263575	302817	282103	289759
							85%	84%	86%	80%	86%

2.2 Compared Parameters

Parameter	Planned	Actual	Parameter	Planned	Actual
Instrument	ACIS	ACIS	Obspar format version number	7	7
Detector	ACIS-01236	ACIS-01236	Obspar file type	PREDICTED	ACTUAL
Grating	NONE	NONE	Obspar update status	NONE	UPDATED
Data mode	VFAINT	VFAINT	CCD I0 on	Y	Y
Observation mode	POINTING	POINTING	CCD I1 on	Y	Y
[deg] Pointing RA	168.982846	168.9812995559865	CCD I2 on	Y	Y
[deg] Pointing Dec	1.494418	1.521869742585449	CCD I3 on	Y	Y
[deg] Pointing Roll	62.766011	62.97473228447562	CCD S0 on	N	N
[mm] SIM focus pos	-0.782348	-0.7809083437167272	CCD S1 on	N	N
[mm] SIM defocus	0	0.001439871863259334	CCD S2 on	O1	Y
[mm] SIM translation stage pos	-229.442463	-229.4438428438578	CCD S3 on	N	N
[mm] SIM translation stage offset	-4.15	-4.148610159071865	CCD S4 on	N	N
[s] Observation start time (MET)	318399309.184000	318398194.41675	CCD S5 on	N	N
Observation start date	2008-02-03T04:14:04	2008-02-03T03:56:34	Number of optional ACIS chips dropped	0	0
[s] Observation end time (MET)	318439309.184000	318440431.5938	On-chip summing requested	N	N
Observation end date	2008-02-03T15:20:44	2008-02-03T15:40:31	Subarray requested	NONE	NONE
Read mode	TIMED	TIMED	Alternating exposures requested	N	N
			[s] Primary exposure time	0.000000	3.1

2.3 Aspect



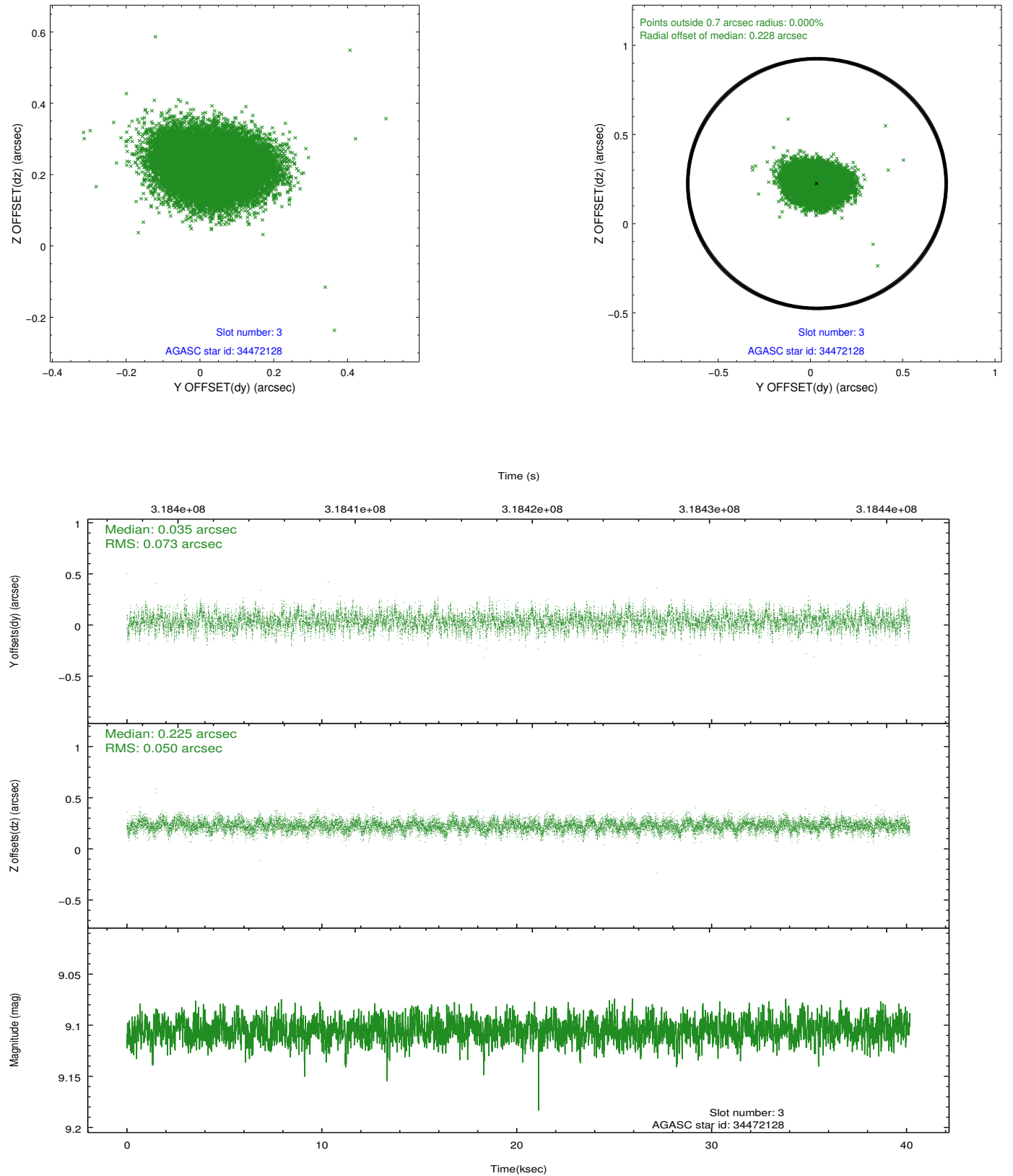


Slot Statistics

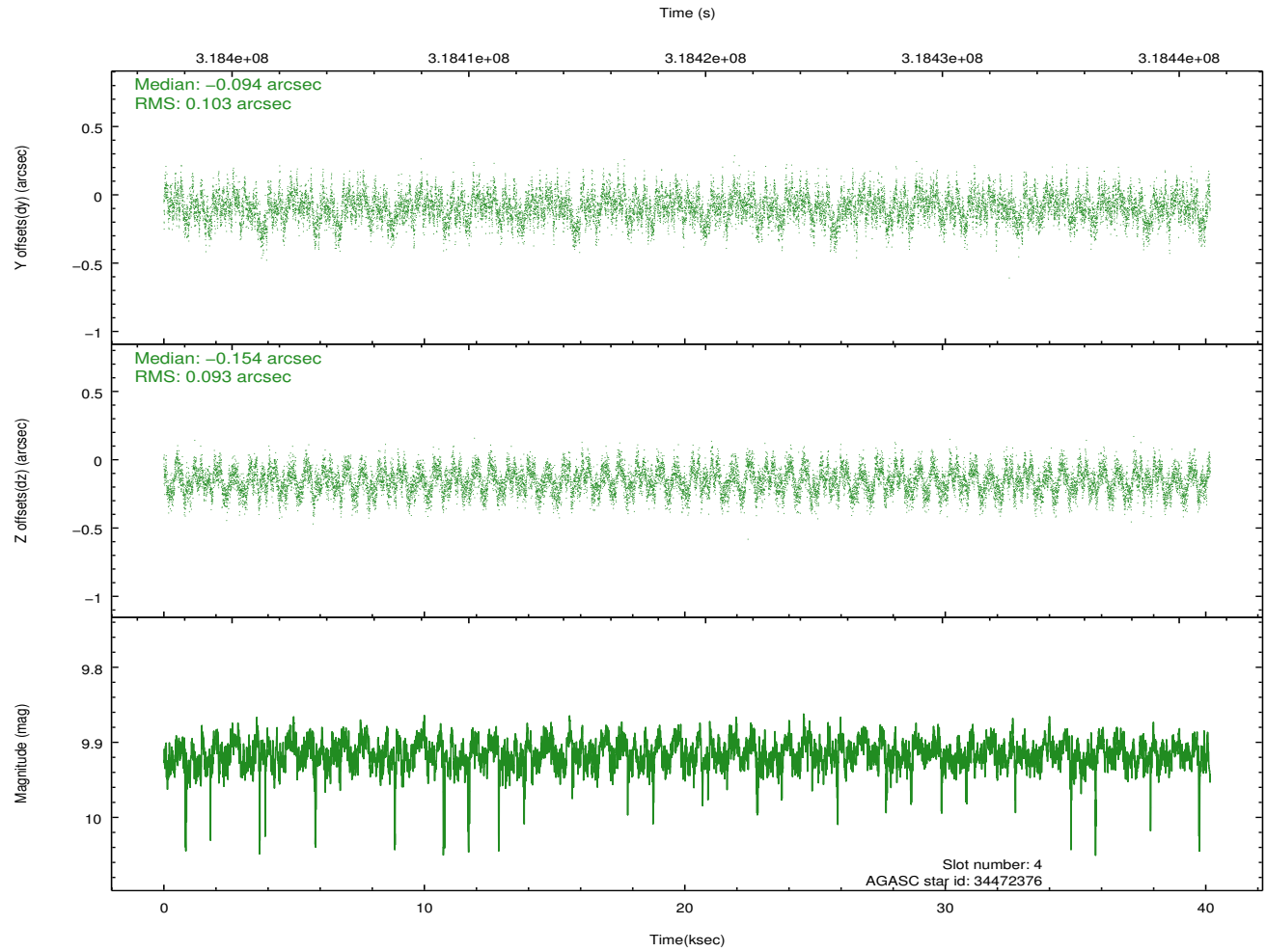
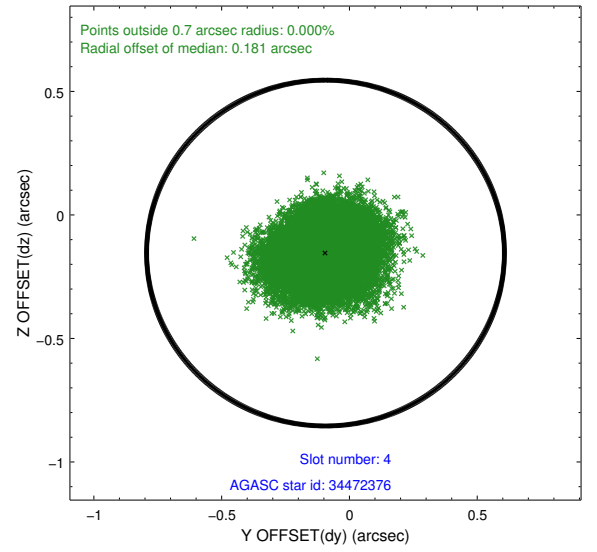
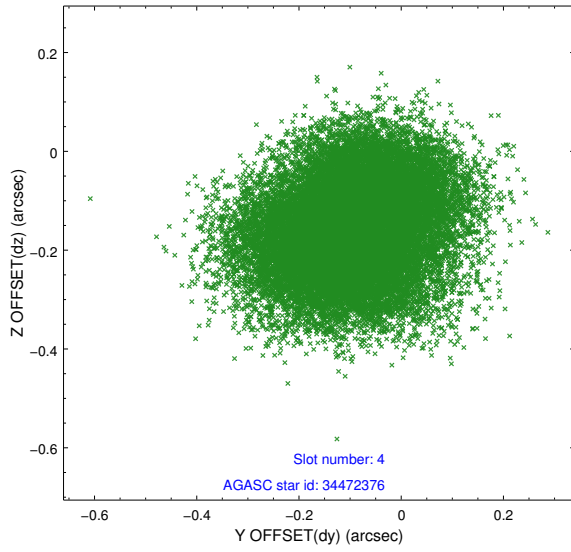
slot	status	id	mag	n_pts	med_dy	med_dz	dr1	dr2	ra	dec	mean_y	mean_z
0	FID	ACIS-I-1	7.23	9799	0.075	-0.023	0.007	0.013	0.000000	0.000000	926.37	-922.81
1	FID	ACIS-I-5	7.23	9798	-0.245	0.072	0.007	0.014	0.000000	0.000000	-1822.06	974.73
2	FID	ACIS-I-6	7.23	9797	0.079	0.022	0.007	0.012	0.000000	0.000000	391.88	1619.22
3	GUIDE	34472128	9.11	19580	0.035	0.225	0.093	0.156	169.776116	1.701808	1970.93	-2195.72
4	GUIDE	34472376	9.92	19551	-0.094	-0.154	0.151	0.234	168.818822	2.185261	1941.53	1662.79
5	GUIDE	34475736	9.33	19583	0.045	-0.037	0.101	0.155	168.975954	2.086690	1885.51	996.54
6	GUIDE	34476096	9.13	19586	0.142	0.082	0.080	0.128	168.557538	1.072970	-2049.04	667.10
7	GUIDE	34476208	8.12	19592	-0.129	-0.111	0.059	0.096	168.824612	2.063437	1560.07	1443.16

2.4 Star Slots

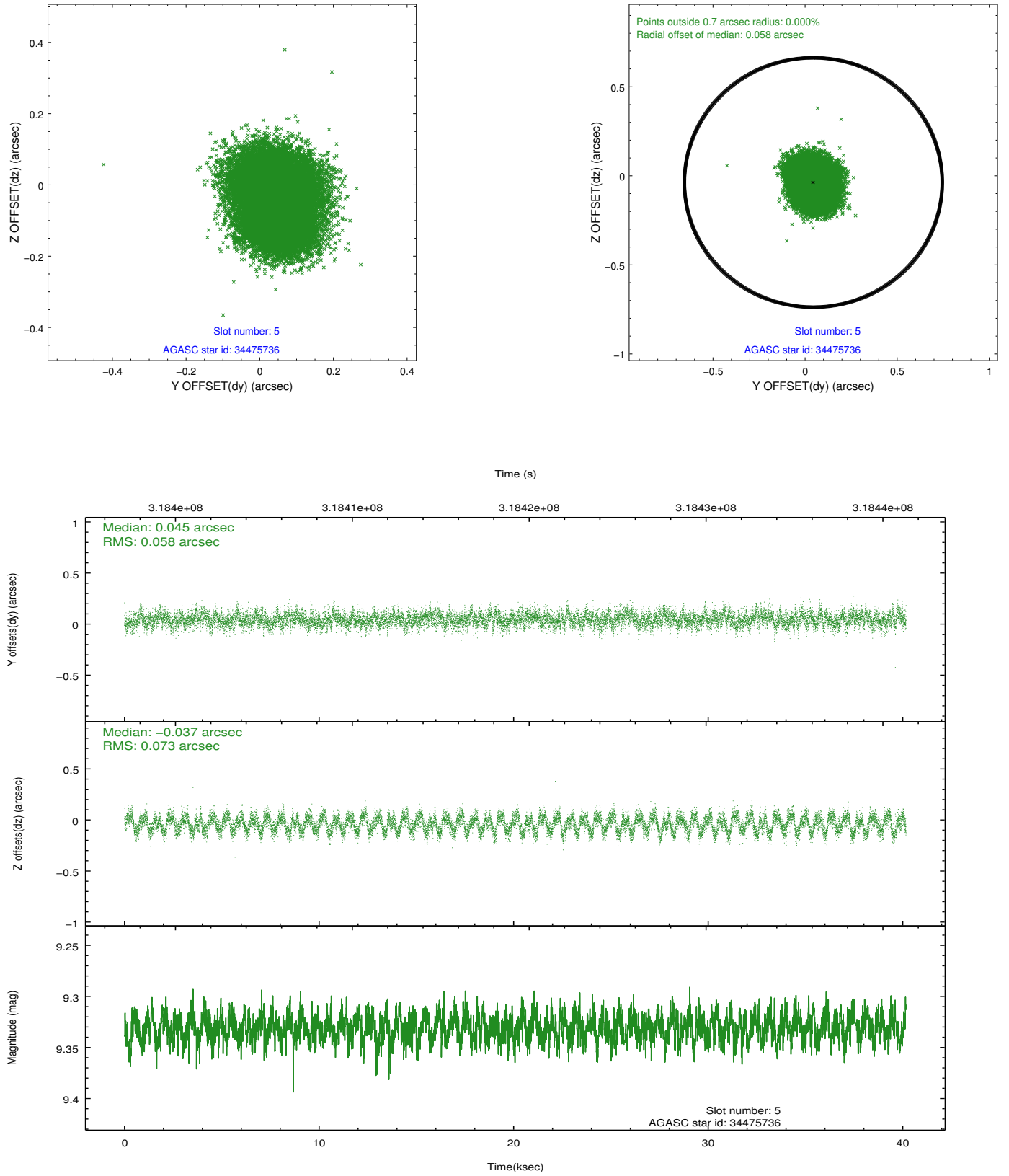
2.4.1 Slot 3



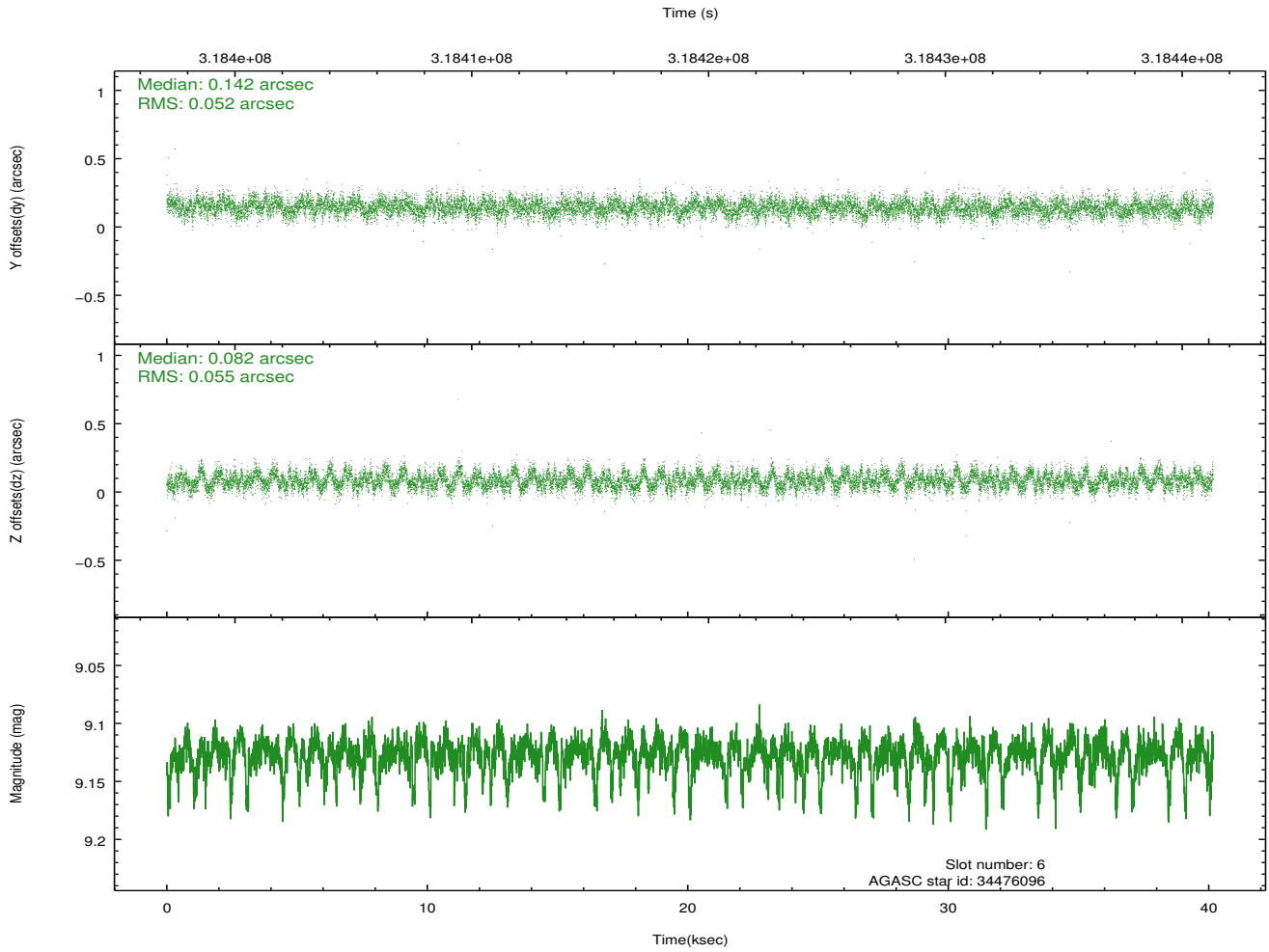
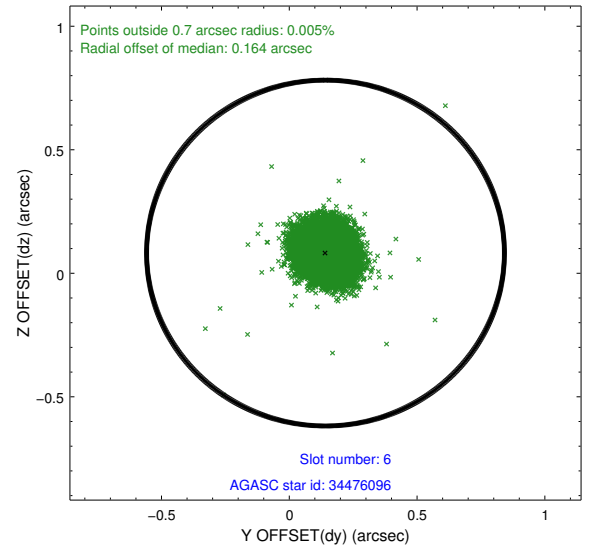
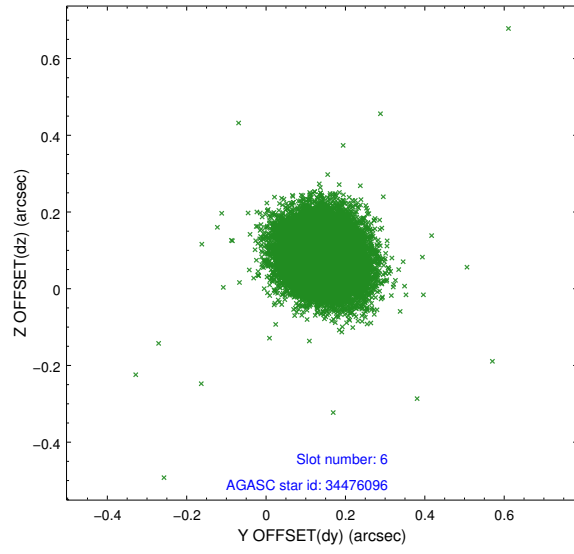
2.4.2 Slot 4



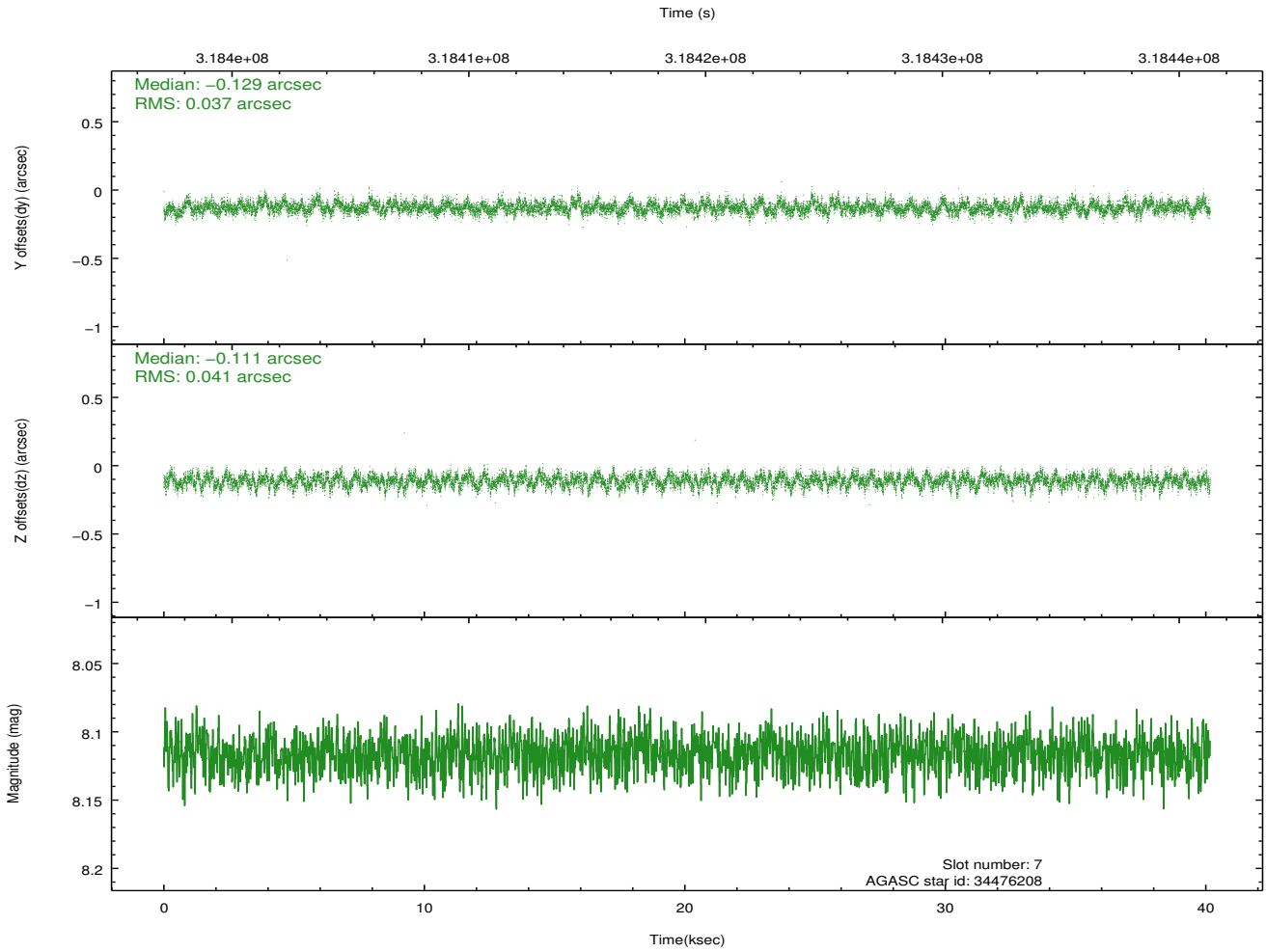
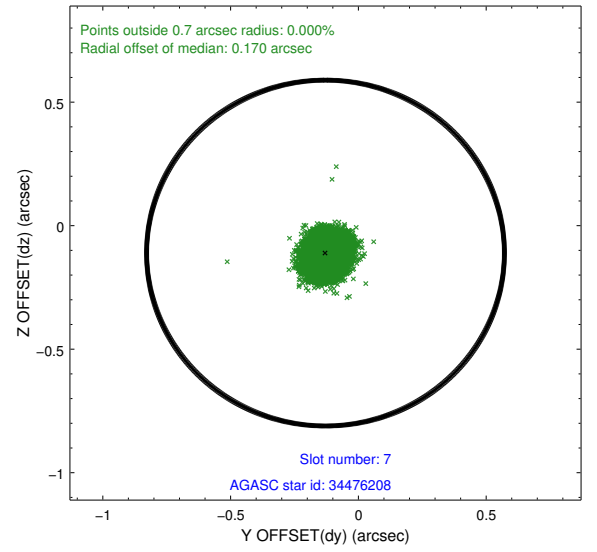
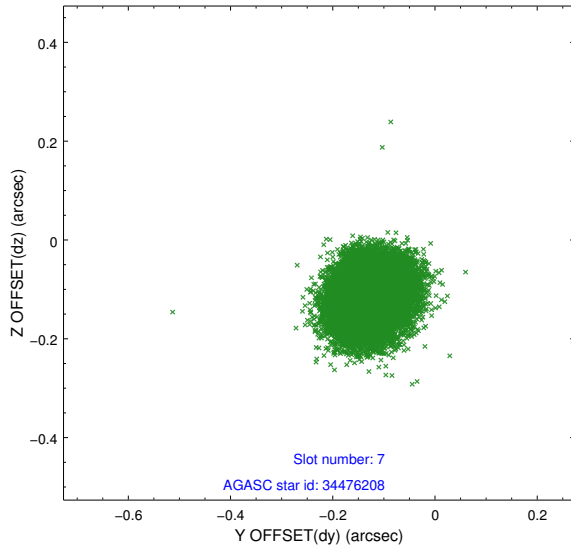
2.4.3 Slot 5



2.4.4 Slot 6

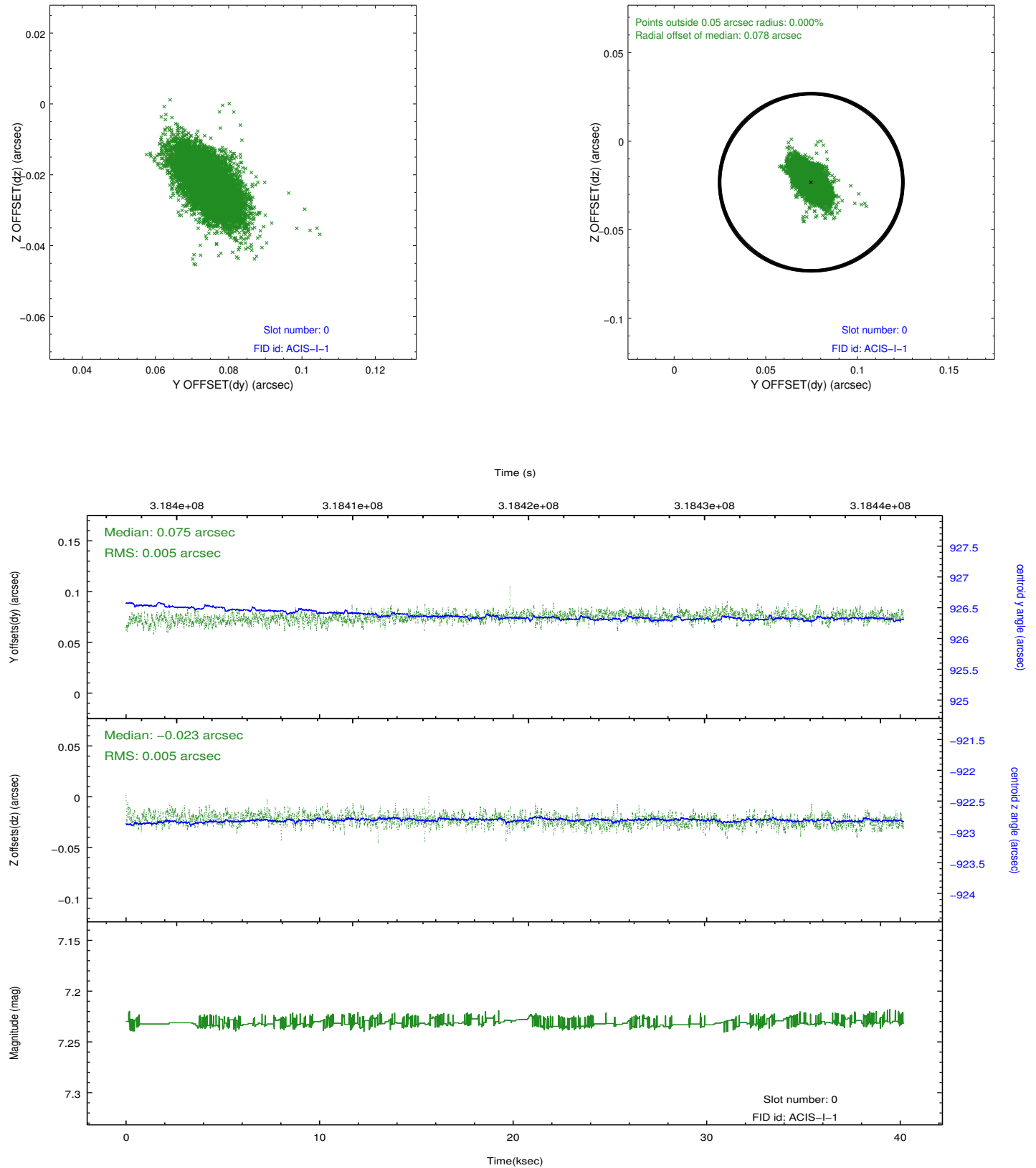


2.4.5 Slot 7

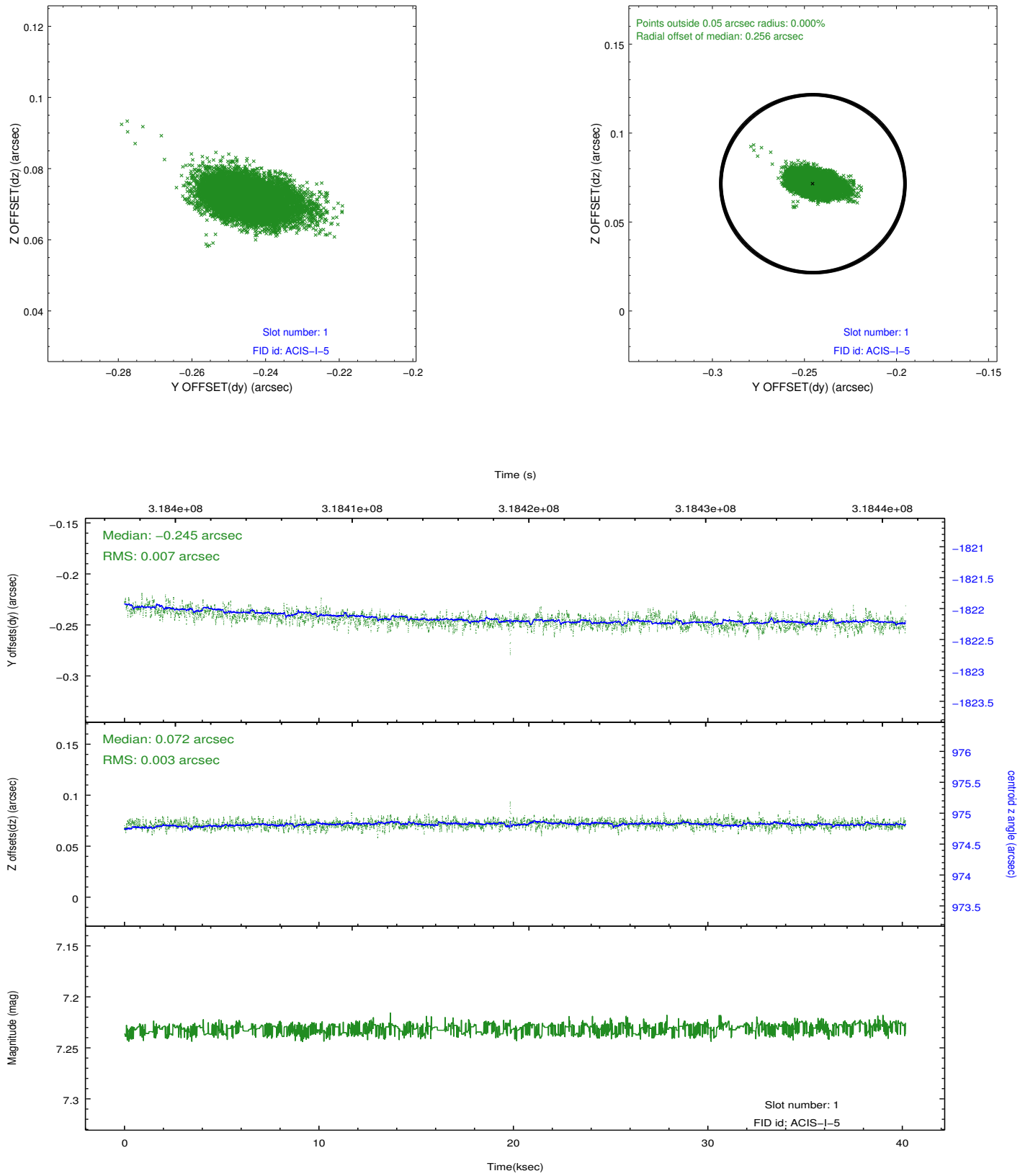


2.5 FID Slots

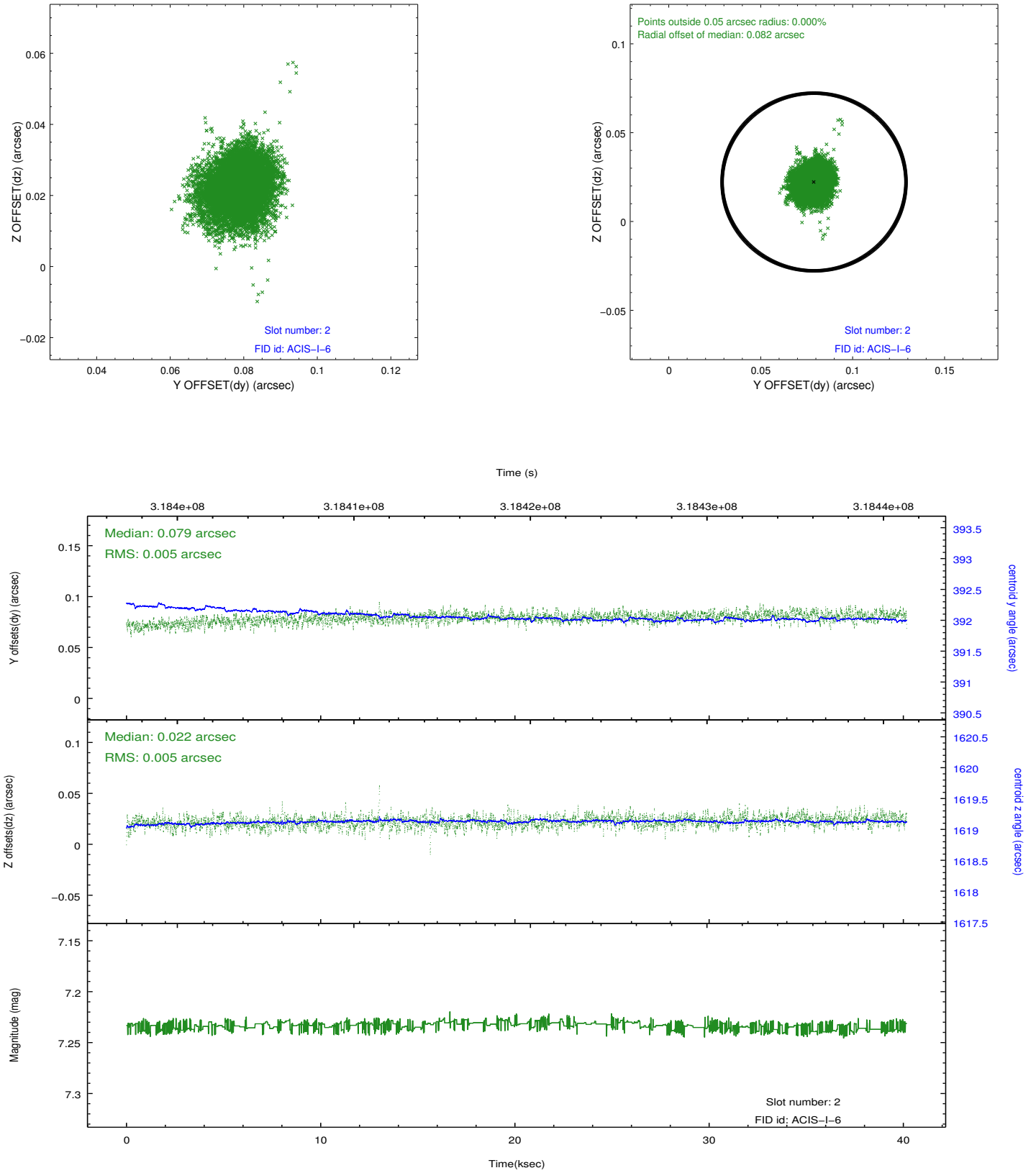
2.5.1 Slot 0



2.5.2 Slot 1



2.5.3 Slot 2



A Summary

A.1 Status

V&V Scientist	Jen Lauer
V&V Date (YYYY-MM-DD)	2012.05.10
V&V Edition	1
V&V Disposition and Status	OK
V&V Charge Time	40.1541362

A.2 Comments