

V&V Reference Report

L2 ASCDS Version : 8.4.4

Observation 9323 - L2 Version 2
Chandra X-Ray Center

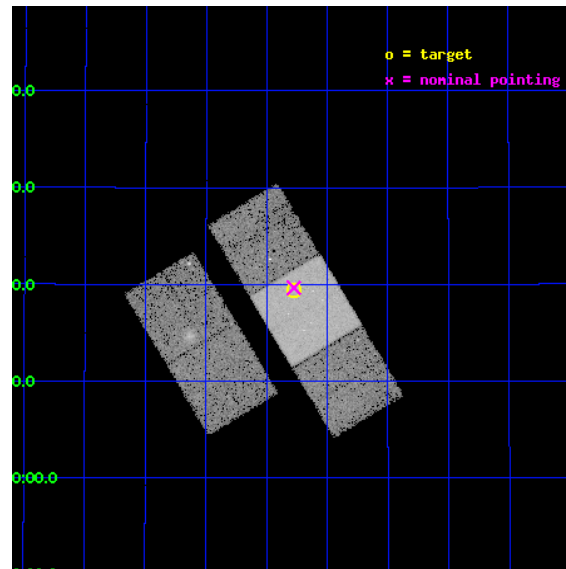
L2 Processing Date : May 21 2012

Contents

1	Front	2
2	OBI	3
2.1	OBI	3
2.1.1	Images	3
2.1.2	Bias	3
2.1.3	Parameters	4
2.1.4	Events	4
2.2	Compared Parameters	5
2.3	Aspect	6
2.4	Star Slots	9
2.4.1	Slot 3	9
2.4.2	Slot 4	10
2.4.3	Slot 5	11
2.4.4	Slot 6	12
2.4.5	Slot 7	13
2.5	FID Slots	14
2.5.1	Slot 0	14
2.5.2	Slot 1	15
2.5.3	Slot 2	16
A	Summary	17
A.1	Status	17
A.2	Comments	17

1 Front

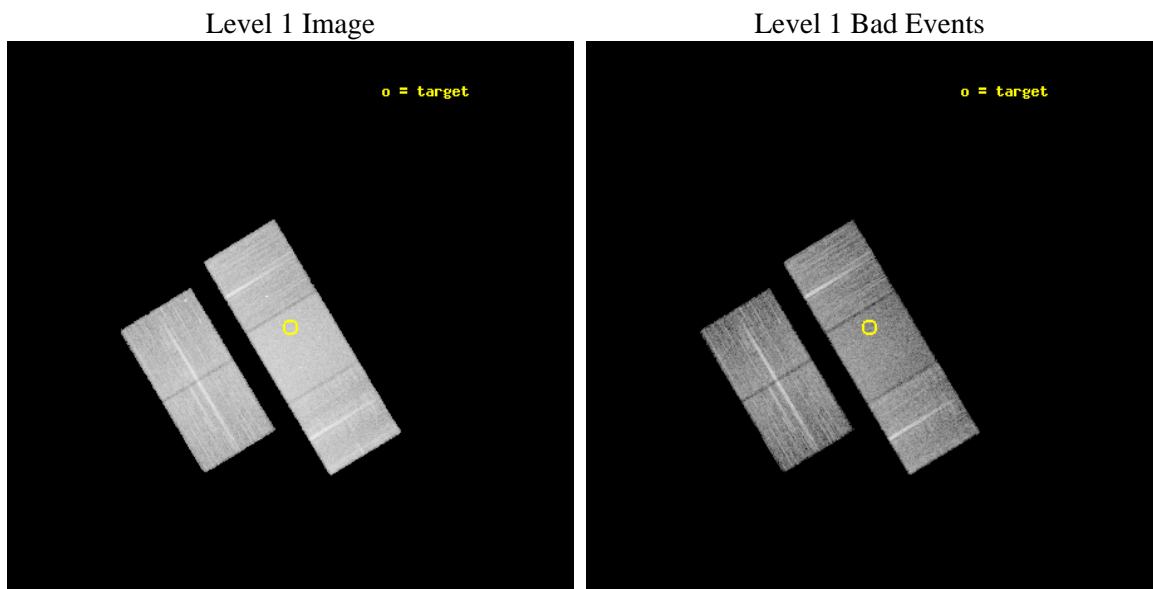
seq_num	701763	Sequence number
obs_id	9323	Observation id
title	Deconstructing the Accretion Disk Wind in Quasars	Proposal title
observer	Dr. Gordon Richards	Principal investigator
object	SDSS J0900+3219	Source name
dtcycle	0	
cycle	P	events from which exps? Prim/Second/Both
ra_targ	135.06875	Observer's specified target RA [deg]
dec_targ	32.32275	Observer's specified target Dec [deg]
ra_nom	135.06871055027	Nominal RA [deg]
dec_nom	32.327624850715	Nominal Dec [deg]
roll_nom	58.905445982101	Nominal Roll [deg]
revision	2	Processing version of data
ontime	11175.50008595	Sum of GTIs [s]
livetime	11029.483950043	Livetime [s]
ontime2	11175.50008595	Sum of GTIs [s]
ontime3	11175.50008595	Sum of GTIs [s]
ontime6	11175.50008595	Sum of GTIs [s]
ontime7	11175.50008595	Sum of GTIs [s]
ontime8	11175.50008595	Sum of GTIs [s]
l2events	113766	Number of level 2 events



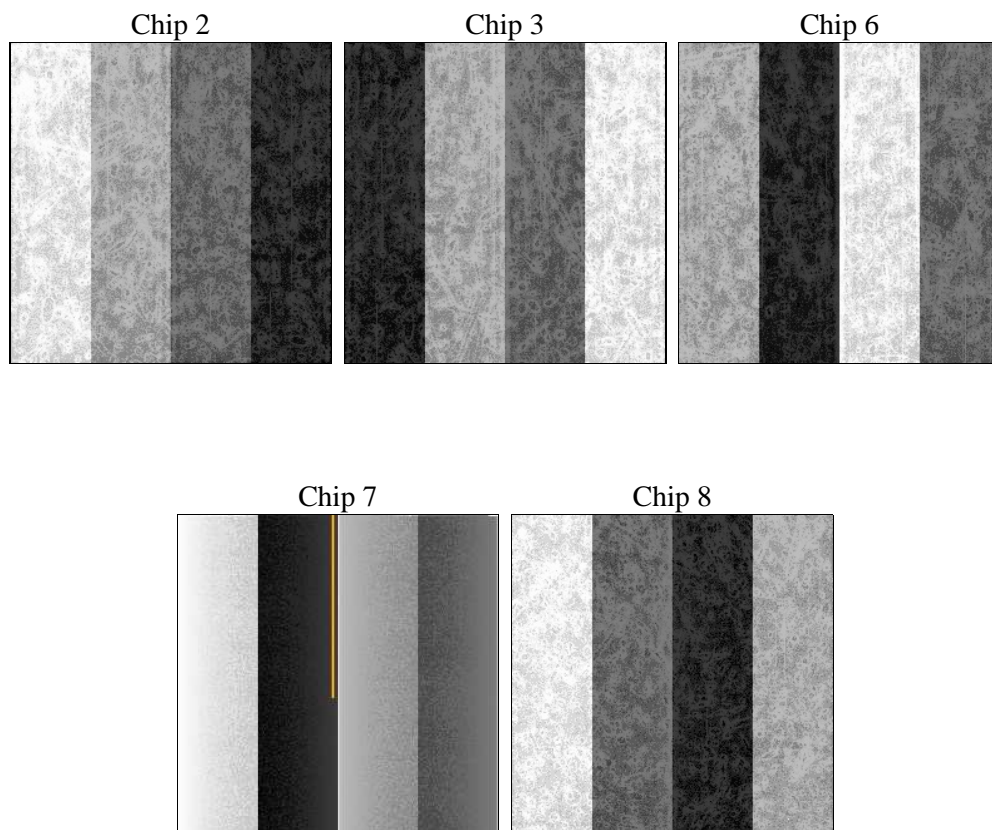
2 OBI

2.1 OBI

2.1.1 Images



2.1.2 Bias



2.1.3 Parameters

obi_num	0	Obi number	sched_exp_time	11000.772000	[s] Scheduled observation exposure time
ascdsver	8.4.4	Processing system revision	ontime	11175.50008595	Sum of GTIs [s]
caldbver	4.4.9	 	ontime2	11175.50008595	Sum of GTIs [s]
date	2012-05-21T09:07:33	Date and time of file creation	ontime3	11175.50008595	Sum of GTIs [s]
revision	2	Processing version of data	ontime6	11175.50008595	Sum of GTIs [s]
			ontime7	11175.50008595	Sum of GTIs [s]
			ontime8	11175.50008595	Sum of GTIs [s]
			l1events	653247	Number of level 1 events

2.1.4 Events

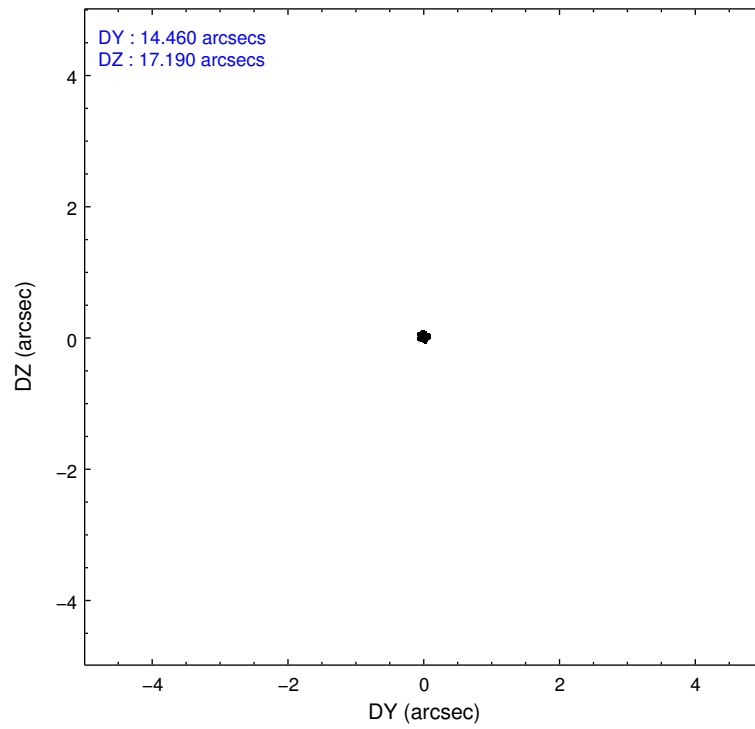
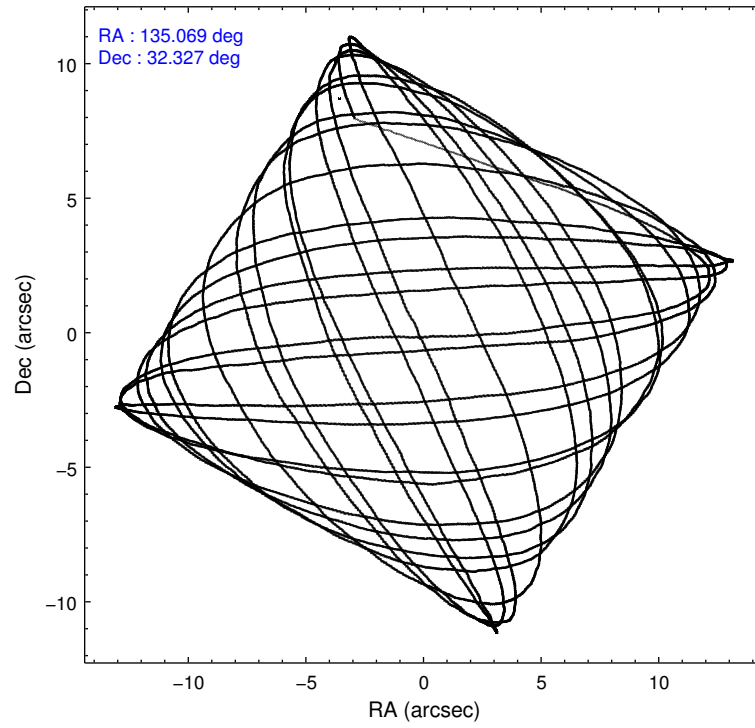
	ccd 2	ccd 3	ccd 6	ccd 7	ccd 8
level 1 events	111049	115383	117188	161444	148183
rejected events	96529	102083	103177	96600	115026
rejected %	86%	88%	88%	59%	77%

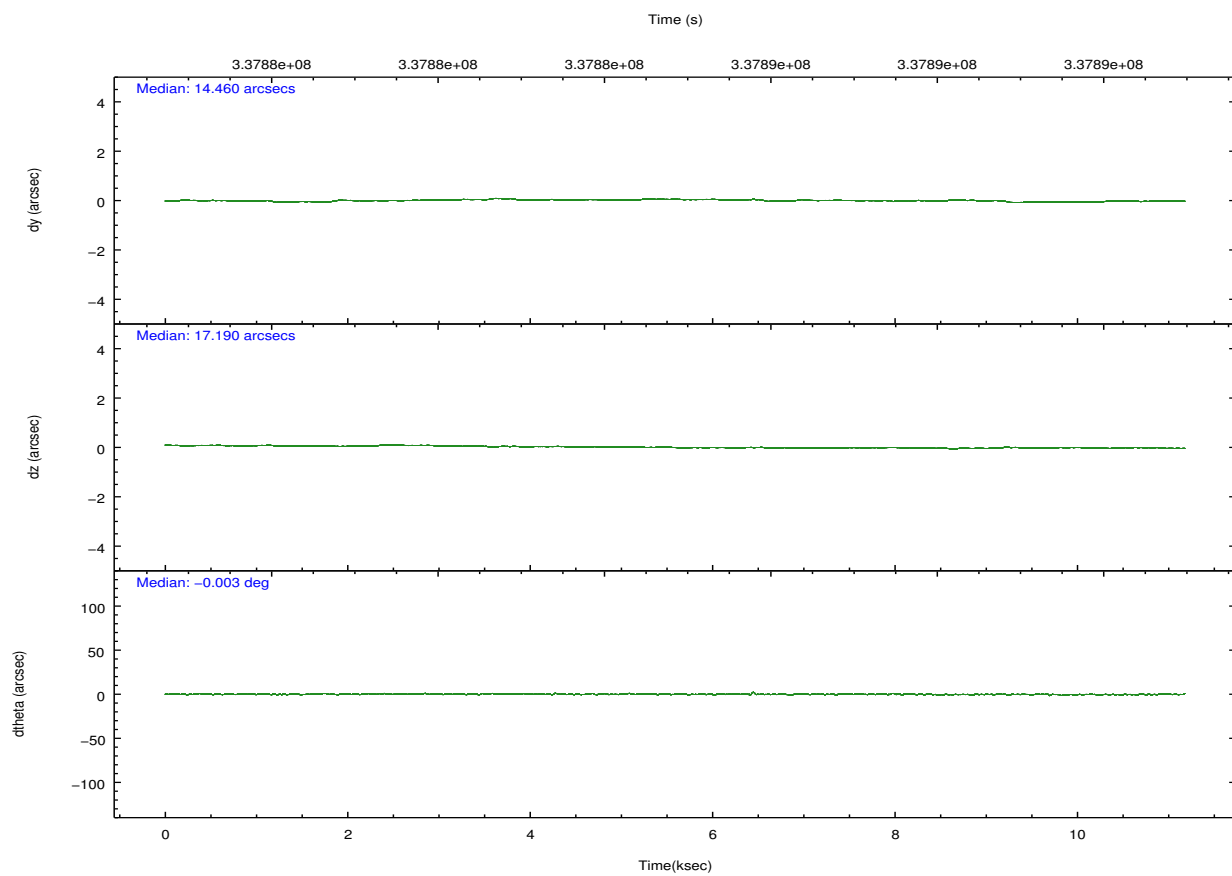
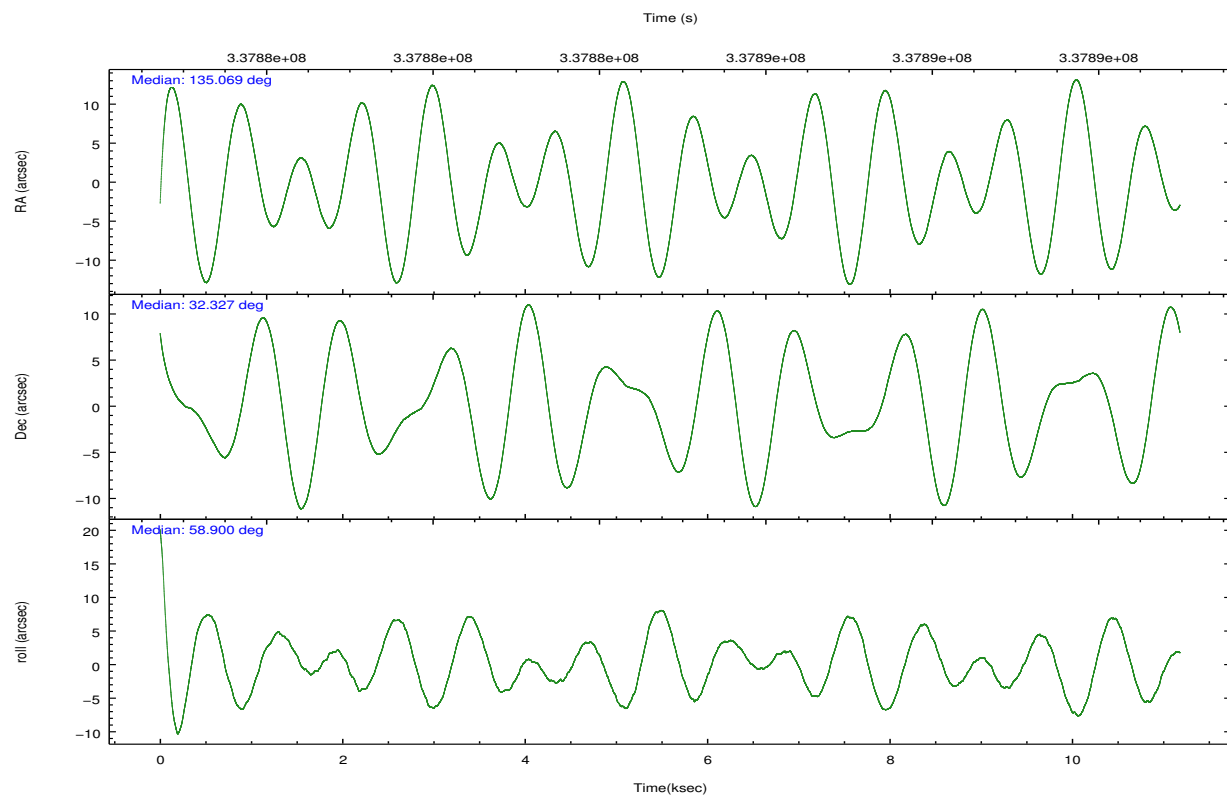
	ccd 2	ccd 3	ccd 6	ccd 7	ccd 8
grade 0 events	7252	6069	5881	5897	10857
	6%	5%	5%	3%	7%
grade 1 events	92	80	59	167	129
	0%	0%	0%	0%	0%
grade 2 events	2963	2812	3182	13777	7666
	2%	2%	2%	8%	5%
grade 3 events	1289	1246	1295	5702	3617
	1%	1%	1%	3%	2%
grade 4 events	1327	1253	1313	5659	3317
	1%	1%	1%	3%	2%
grade 5 events	4401	5294	5589	15129	7392
	3%	4%	4%	9%	4%
grade 6 events	2224	2428	2846	36274	8921
	2%	2%	2%	22%	6%
grade 7 events	91501	96201	97023	78839	106284
	82%	83%	82%	48%	71%

2.2 Compared Parameters

Parameter	Planned	Actual	Parameter	Planned	Actual
Instrument	ACIS	ACIS	Obspar format version number	7	7
Detector	ACIS-23678	ACIS-23678	Obspar file type	PREDICTED	ACTUAL
Grating	NONE	NONE	Obspar update status	NONE	UPDATED
Data mode	FAINT	FAINT	CCD I0 on	N	N
Observation mode	POINTING	POINTING	CCD I1 on	N	N
[deg] Pointing RA	135.068519	135.0687105502729	CCD I2 on	O1	Y
[deg] Pointing Dec	32.300257	32.32762485071538	CCD I3 on	Y	Y
[deg] Pointing Roll	58.748911	58.9054459821012	CCD S0 on	N	N
[mm] SIM focus pos	-0.684267	-0.6828225247311905	CCD S1 on	N	N
[mm] SIM defocus	0	0.001444936568705701	CCD S2 on	Y	Y
[mm] SIM translation stage pos	-190.132523	-190.1425803651734	CCD S3 on	Y	Y
[mm] SIM translation stage offset	0	0.01005778216563158	CCD S4 on	Y	Y
[s] Observation start time (MET)	337879441.184000	337878230.45253	CCD S5 on	N	N
Observation start date	2008-09-15T15:22:56	2008-09-15T15:03:50	Number of optional ACIS chips dropped	0	0
[s] Observation end time (MET)	337890442.184000	337890667.29064	On-chip summing requested	N	N
Observation end date	2008-09-15T18:26:17	2008-09-15T18:31:07	Subarray requested	NONE	NONE
Read mode	TIMED	TIMED	Alternating exposures requested	N	N
			[s] Primary exposure time	0.000000	3.1

2.3 Aspect



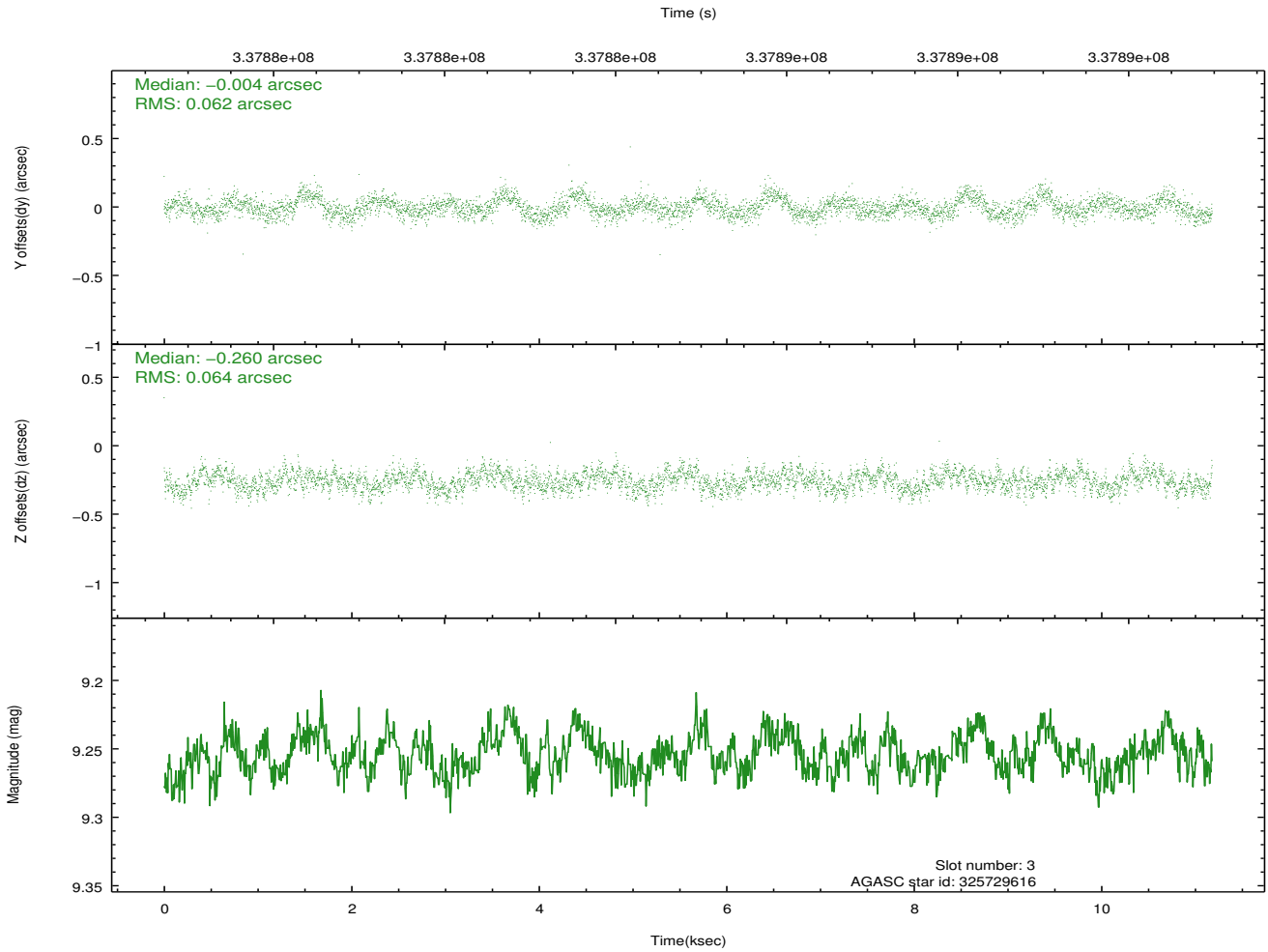
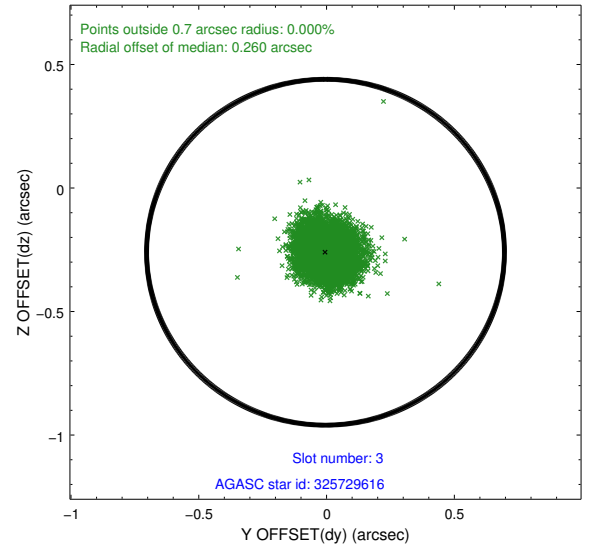
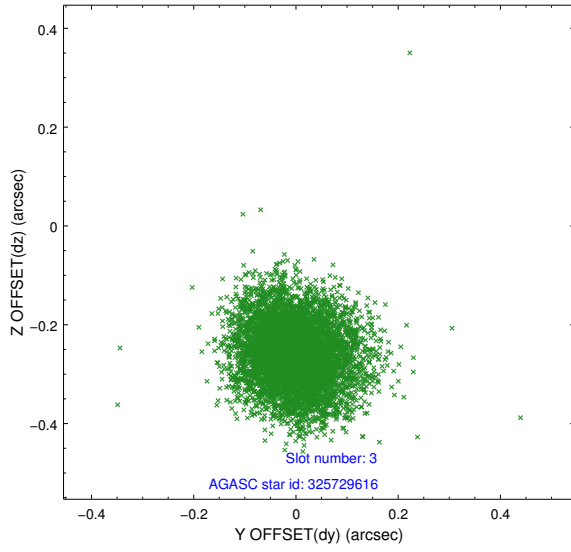


Slot Statistics

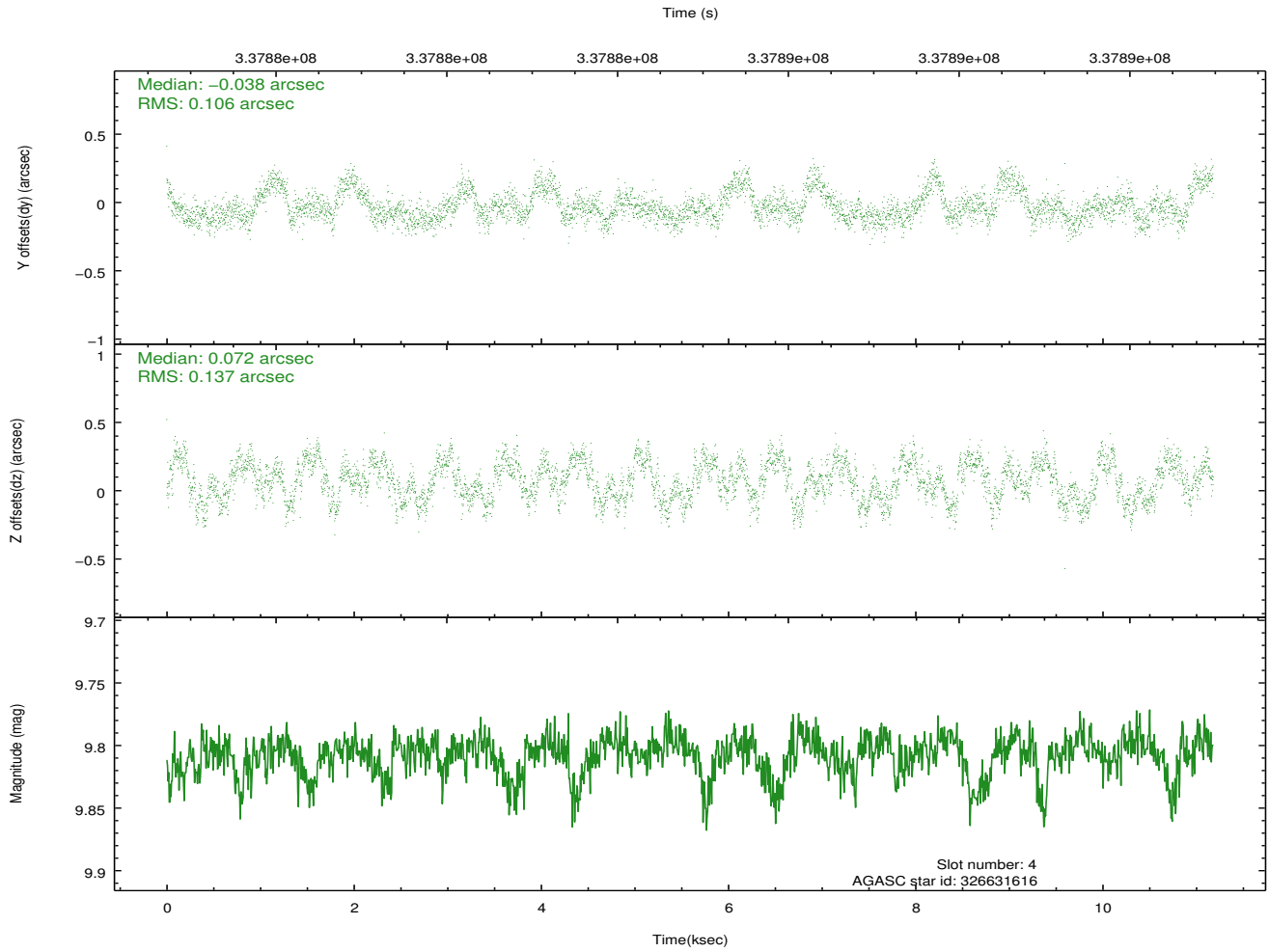
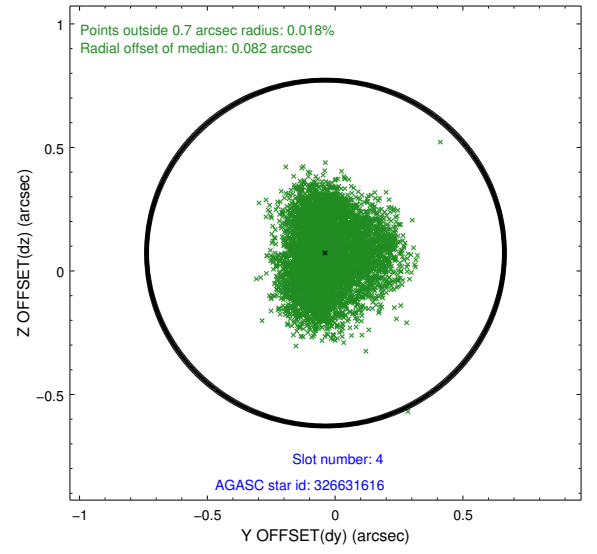
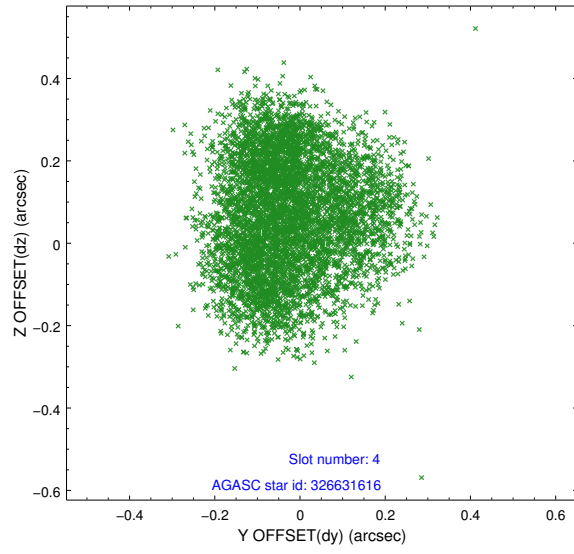
slot	status	id	mag	n_pts	med_dy	med_dz	dr1	dr2	ra	dec	mean_y	mean_z
0	FID	ACIS-S-2	6.87	2727	-0.047	-0.029	0.007	0.011	0.000000	0.000000	-767.51	-1738.60
1	FID	ACIS-S-4	6.96	2726	0.170	0.030	0.006	0.012	0.000000	0.000000	2145.83	169.39
2	FID	ACIS-S-5	6.99	2727	-0.154	0.007	0.007	0.012	0.000000	0.000000	-1819.82	163.66
3	GUIDE	325729616	9.25	5448	-0.004	-0.260	0.095	0.150	134.854392	32.193326	-667.18	357.75
4	GUIDE	326631616	9.81	5451	-0.038	0.072	0.192	0.279	135.471443	32.245645	470.50	-1151.14
5	GUIDE	326631728	9.11	5452	0.014	0.036	0.115	0.179	135.495663	32.149498	212.61	-1393.06
6	GUIDE	326631880	7.83	5455	-0.017	-0.050	0.074	0.112	135.057613	32.092507	-656.95	-359.14
7	GUIDE	326632248	8.97	5449	0.022	0.200	0.102	0.158	135.419792	31.652351	-1433.74	-2129.26

2.4 Star Slots

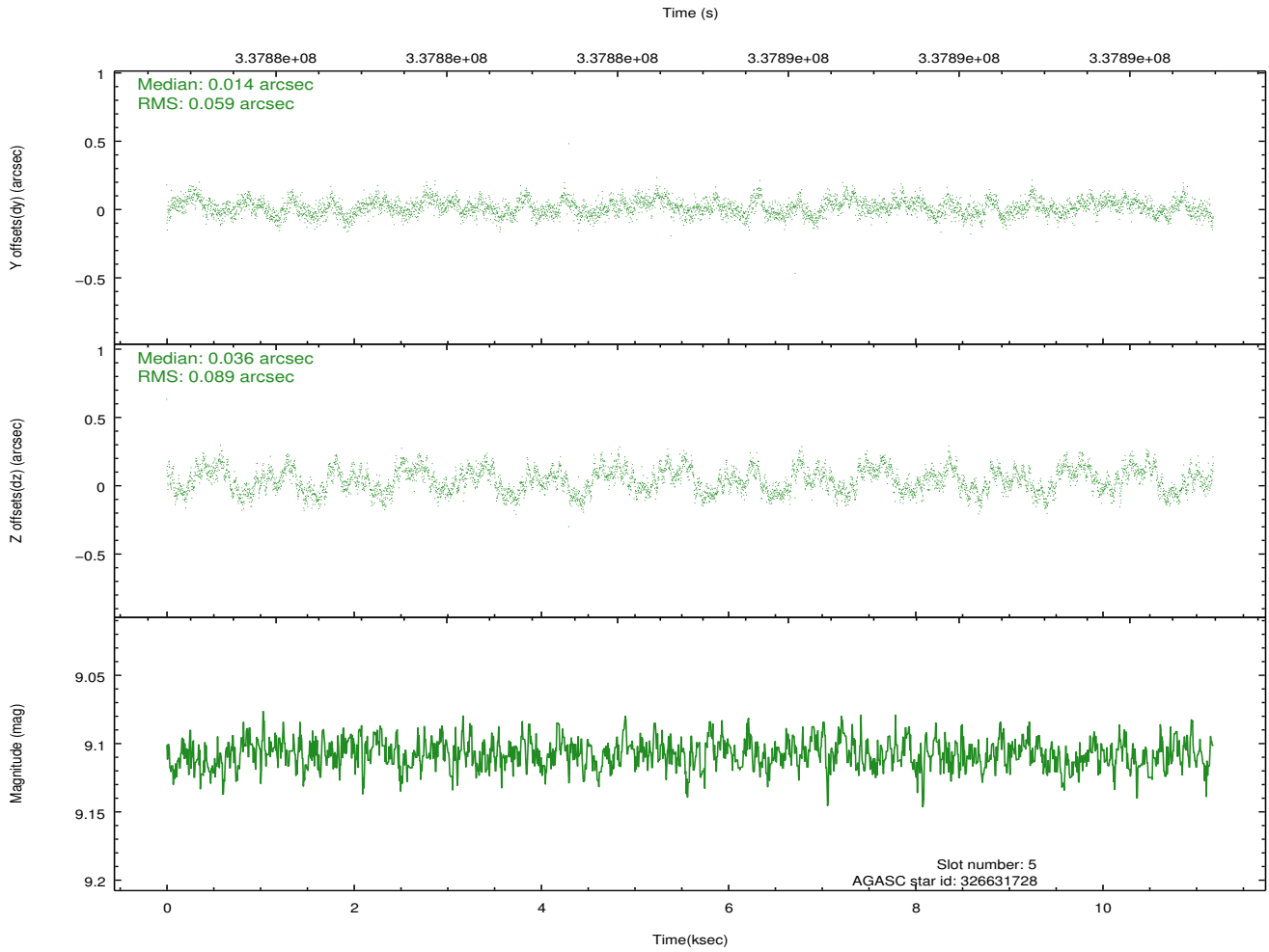
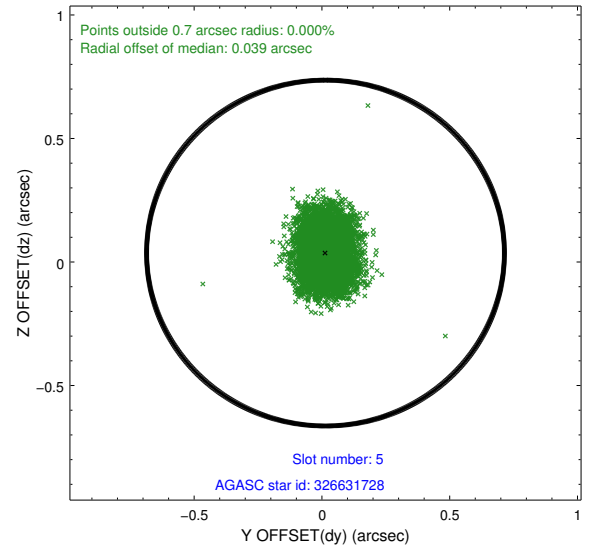
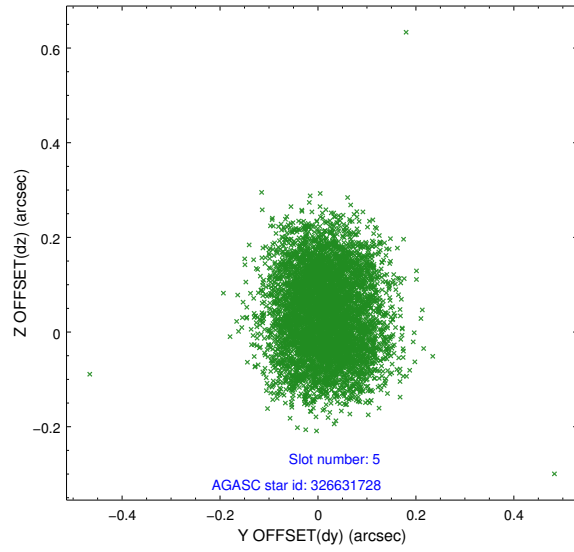
2.4.1 Slot 3



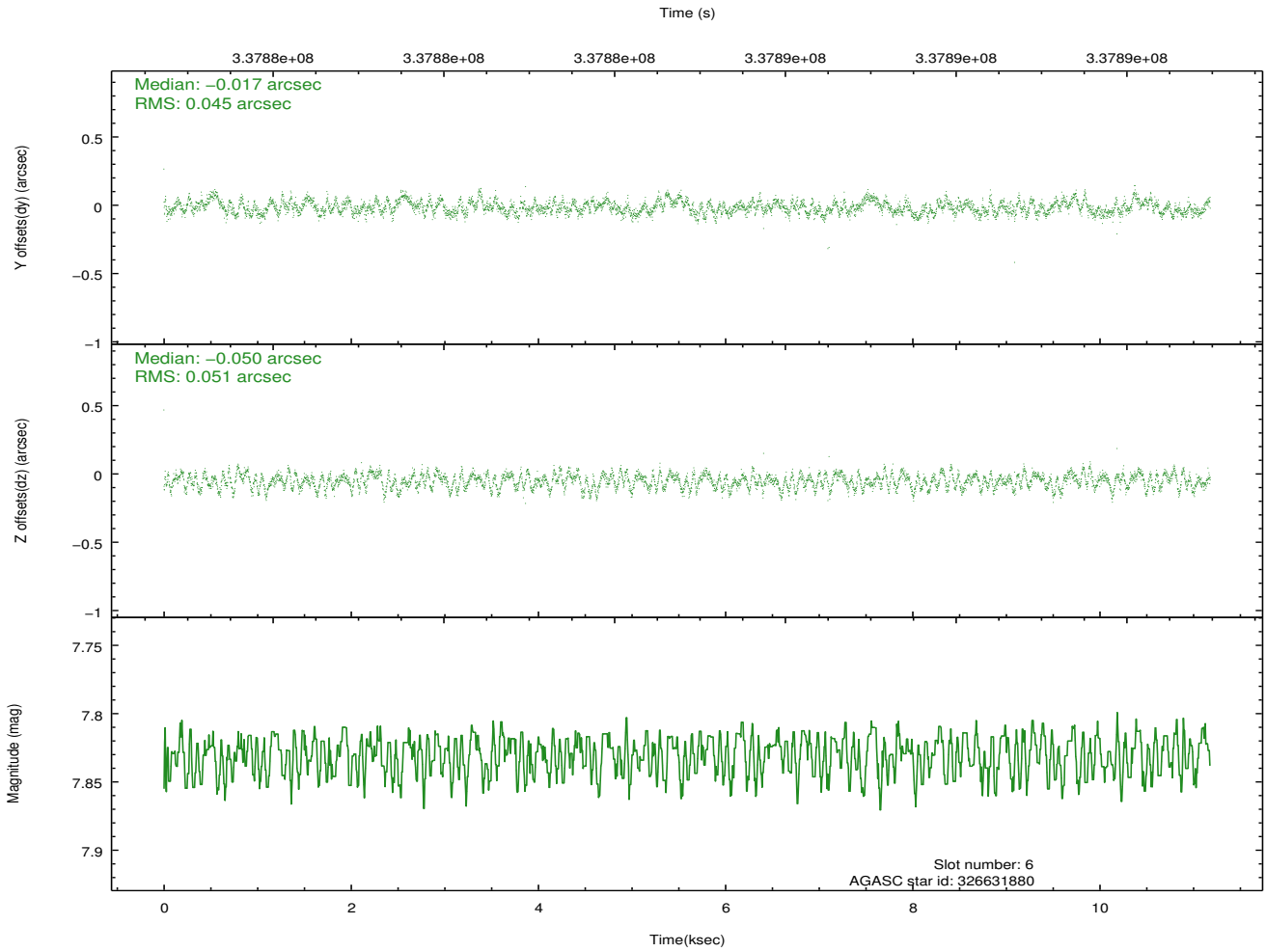
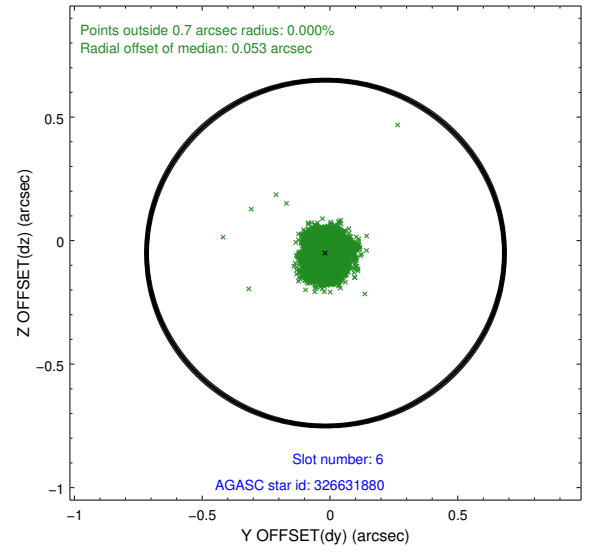
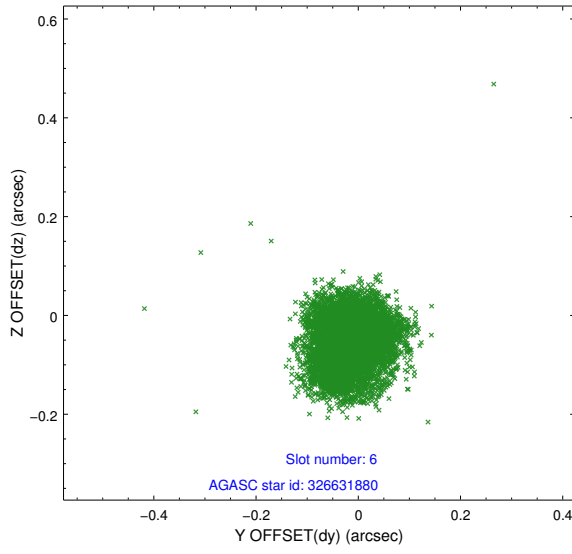
2.4.2 Slot 4



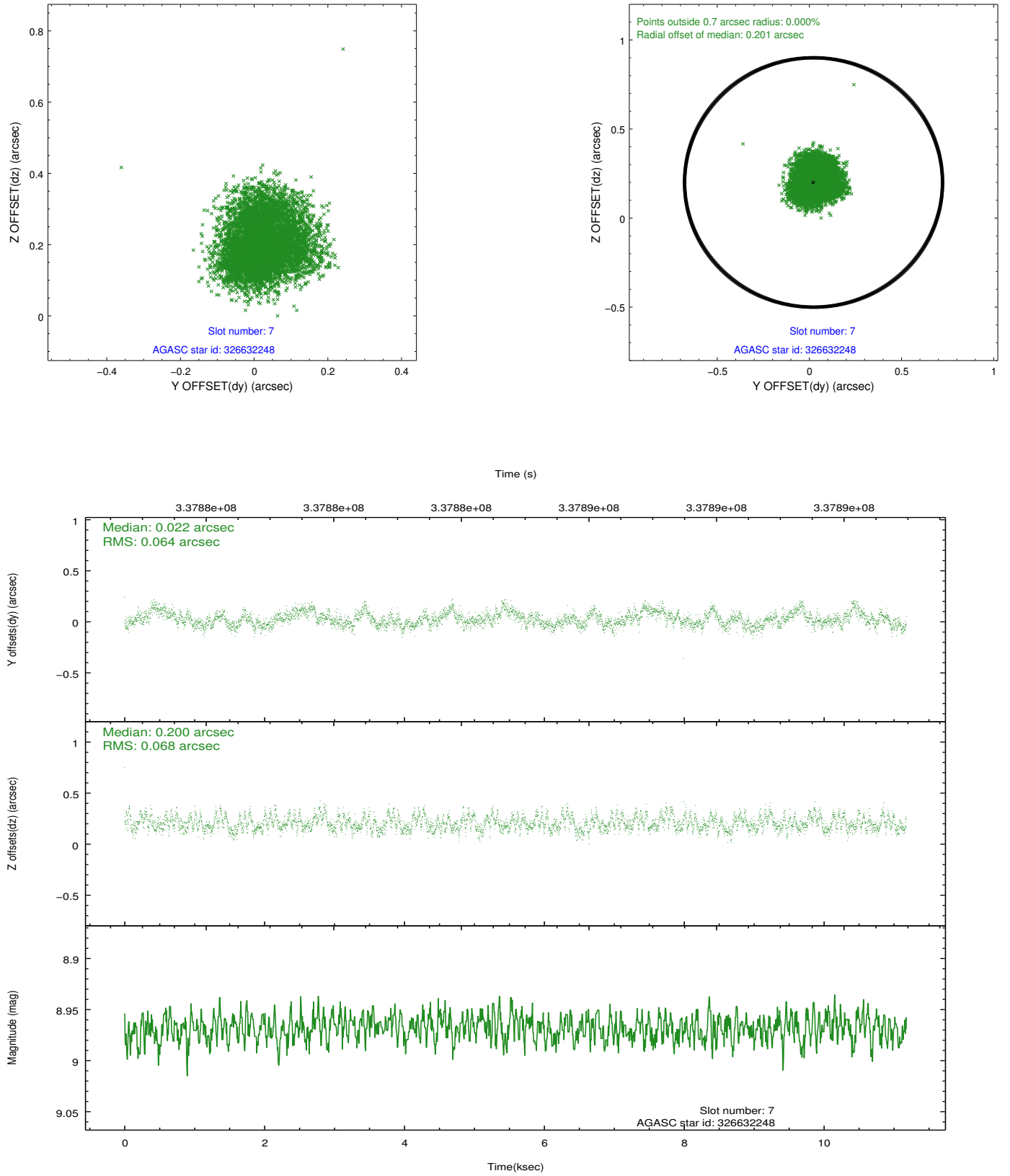
2.4.3 Slot 5



2.4.4 Slot 6

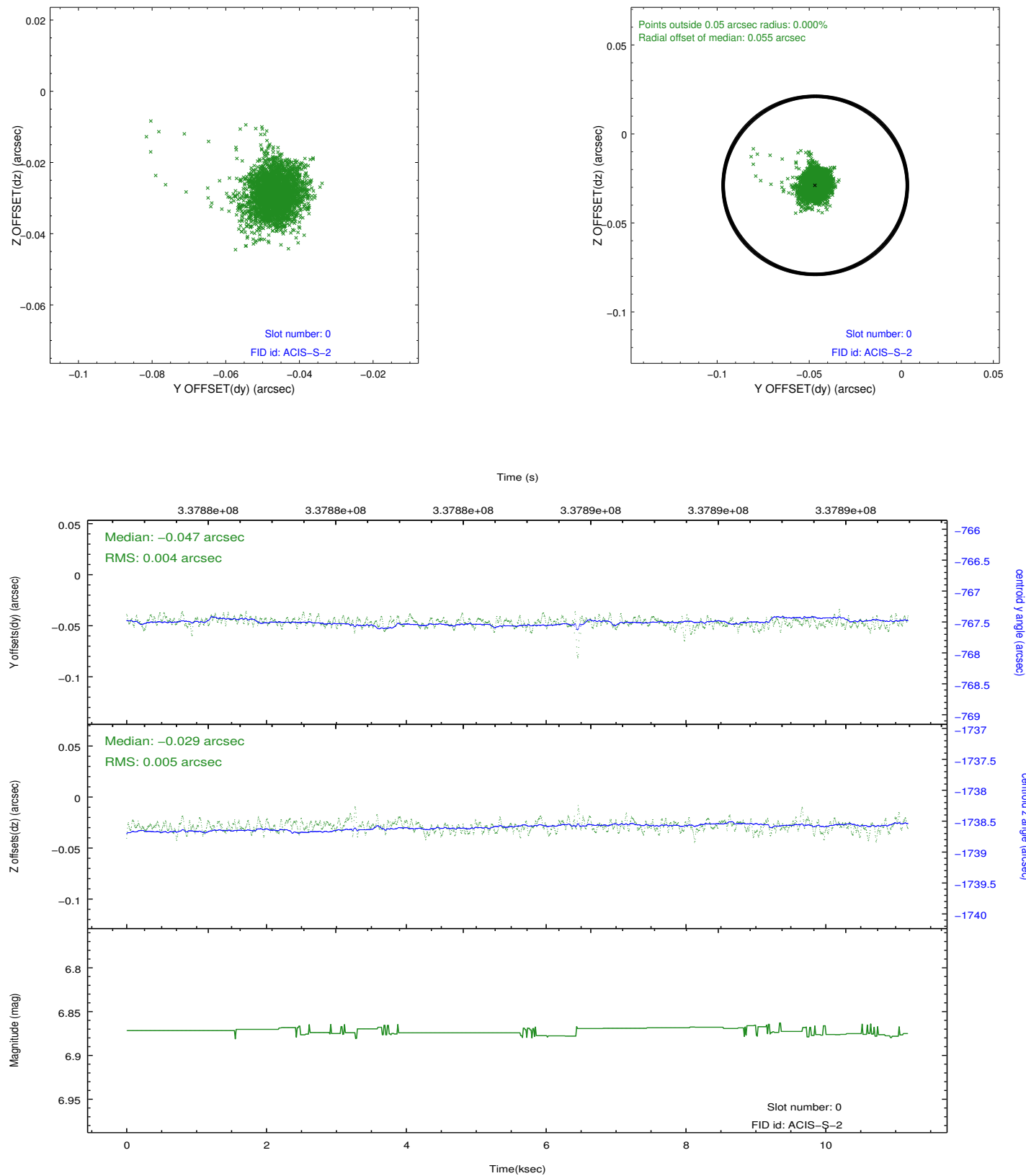


2.4.5 Slot 7

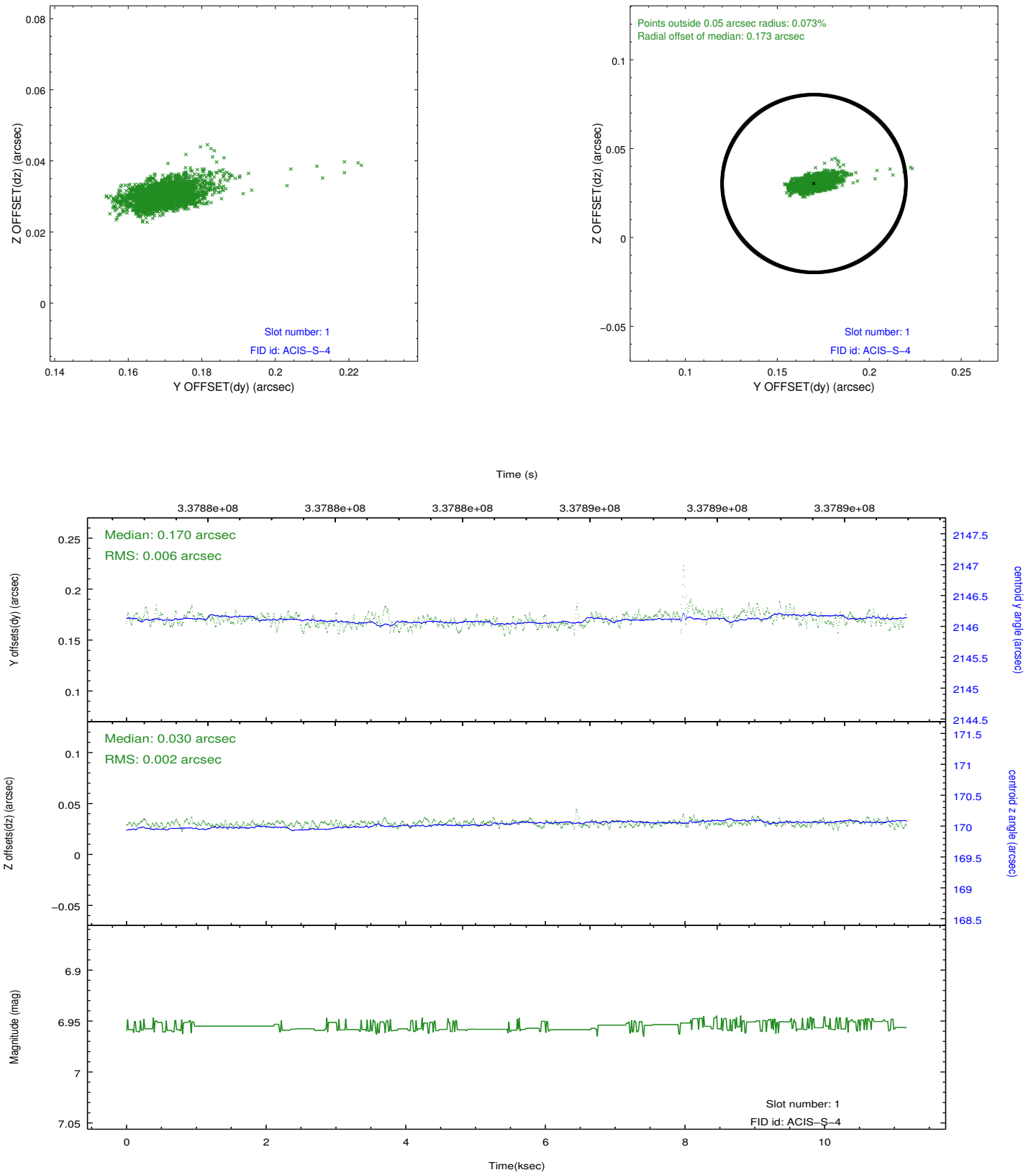


2.5 FID Slots

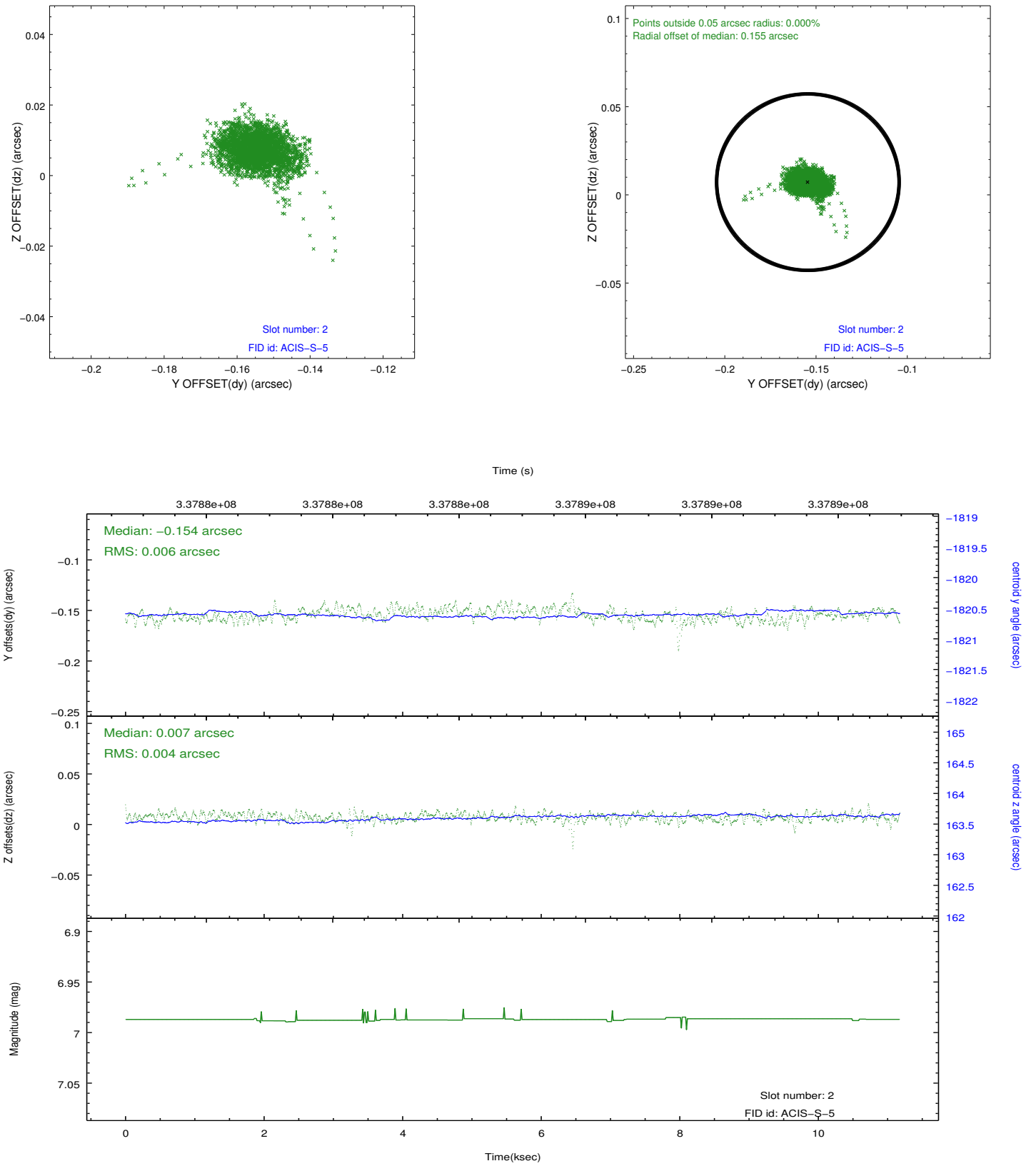
2.5.1 Slot 0



2.5.2 Slot 1



2.5.3 Slot 2



A Summary

A.1 Status

V&V Scientist	Jen Lauer
V&V Date (YYYY-MM-DD)	2012.05.30
V&V Edition	1
V&V Disposition and Status	OK
V&V Charge Time	11.1755

A.2 Comments