

# V&V Reference Report

## L2 ASCDS Version : 8.4.4

Observation 9313 - L2 Version 2  
Chandra X-Ray Center

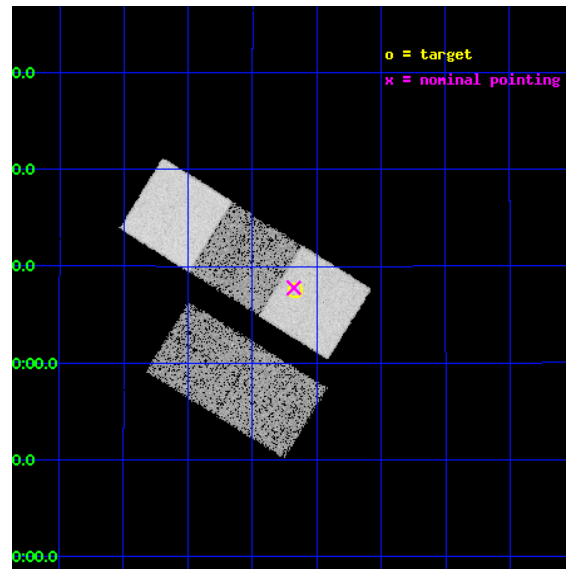
L2 Processing Date : May 5 2012

## Contents

<b>1</b>	<b>Front</b>	<b>2</b>
<b>2</b>	<b>OBI</b>	<b>3</b>
2.1	OBI . . . . .	3
2.1.1	Images . . . . .	3
2.1.2	Bias . . . . .	3
2.1.3	Parameters . . . . .	4
2.1.4	Events . . . . .	4
2.2	Compared Parameters . . . . .	5
2.3	Aspect . . . . .	6
2.4	Star Slots . . . . .	9
2.4.1	Slot 3 . . . . .	9
2.4.2	Slot 4 . . . . .	10
2.4.3	Slot 5 . . . . .	11
2.4.4	Slot 6 . . . . .	12
2.4.5	Slot 7 . . . . .	13
2.5	FID Slots . . . . .	14
2.5.1	Slot 0 . . . . .	14
2.5.2	Slot 1 . . . . .	15
2.5.3	Slot 2 . . . . .	16
<b>A</b>	<b>Summary</b>	<b>17</b>
A.1	Status . . . . .	17
A.2	Comments . . . . .	17

# 1 Front

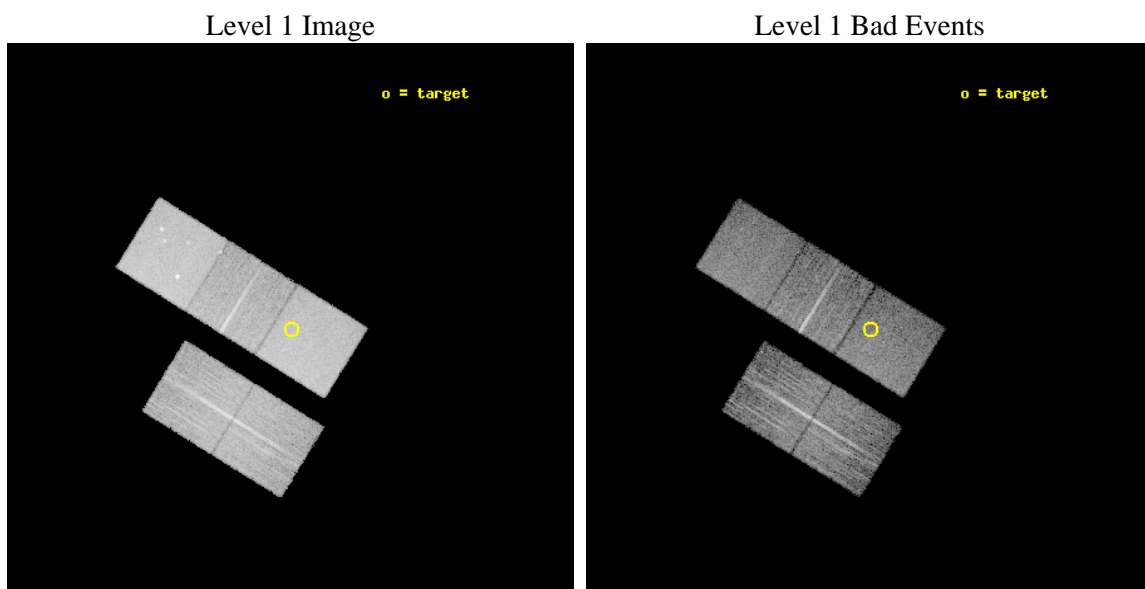
seq_num	701753	Sequence number
obs_id	9313	Observation id
title	Towards a Complete Sample: 3CR Extragalactic Radio Sources with $z < 0.3$	Proposal title
observer	Dr. Daniel Harris	Principal investigator
object	3C315	Source name
dtcycle	0	&#160
cycle	P	events from which exps? Prim/Second/Both
ra_targ	228.417083	Observer's specified target RA [deg]
dec_targ	26.125333	Observer's specified target Dec [deg]
ra_nom	228.41942478242	Nominal RA [deg]
dec_nom	26.129679307863	Nominal Dec [deg]
roll_nom	31.818422184559	Nominal Roll [deg]
revision	2	Processing version of data
ontime	7771.7000597715	Sum of GTIs [s]
livetime	7670.1570770483	Livetime [s]
ontime2	7768.5590994358	Sum of GTIs [s]
ontime3	7771.7000597715	Sum of GTIs [s]
ontime5	7771.7000597715	Sum of GTIs [s]
ontime6	7771.7000597715	Sum of GTIs [s]
ontime7	7771.7000597715	Sum of GTIs [s]
l2events	119245	Number of level 2 events



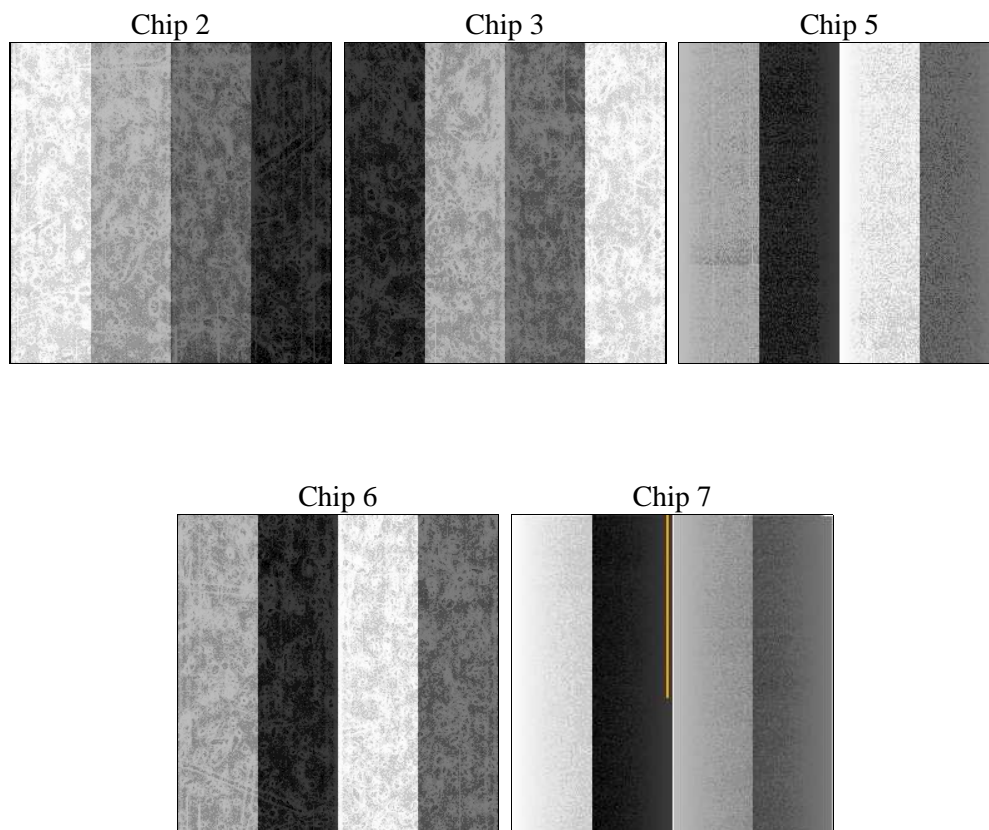
## 2 OBI

### 2.1 OBI

#### 2.1.1 Images



#### 2.1.2 Bias



### 2.1.3 Parameters

obi_num	0	Obi number	sched_exp_time	8000.000000	[s] Scheduled observation exposure time
ascdsver	8.4.4	Processing system revision	ontime	7771.7000597715	Sum of GTIs [s]
caldsver	4.4.9	&#160	ontime2	7768.5590994358	Sum of GTIs [s]
date	2012-05-05T22:06:30	Date and time of file creation	ontime3	7771.7000597715	Sum of GTIs [s]
revision	2	Processing version of data	ontime5	7771.7000597715	Sum of GTIs [s]
			ontime6	7771.7000597715	Sum of GTIs [s]
			ontime7	7771.7000597715	Sum of GTIs [s]
			l1events	456137	Number of level 1 events

### 2.1.4 Events

	ccd 2	ccd 3	ccd 5	ccd 6	ccd 7
level 1 events	77422	74744	120150	76081	107740
rejected events	68240	65810	64838	66841	63042
rejected %	88%	88%	53%	87%	58%

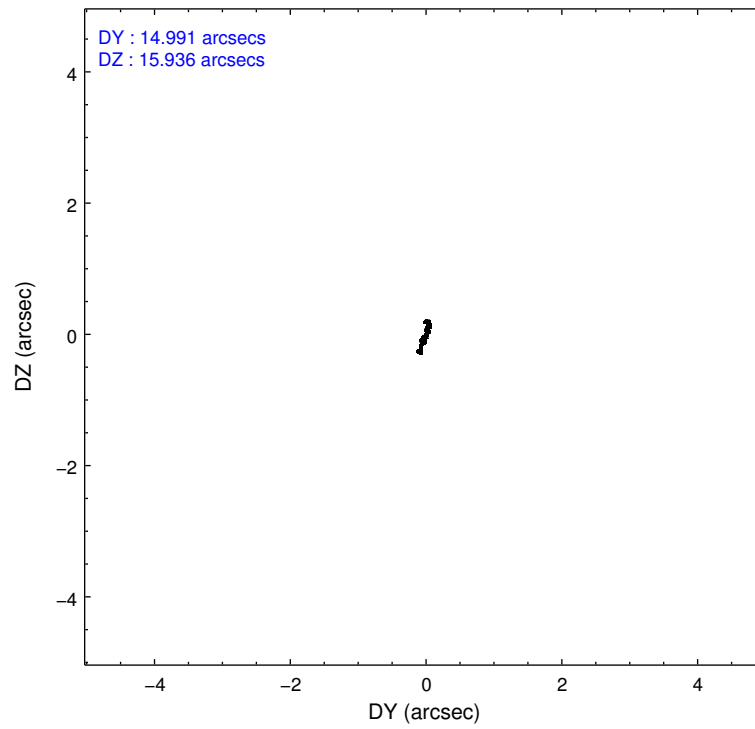
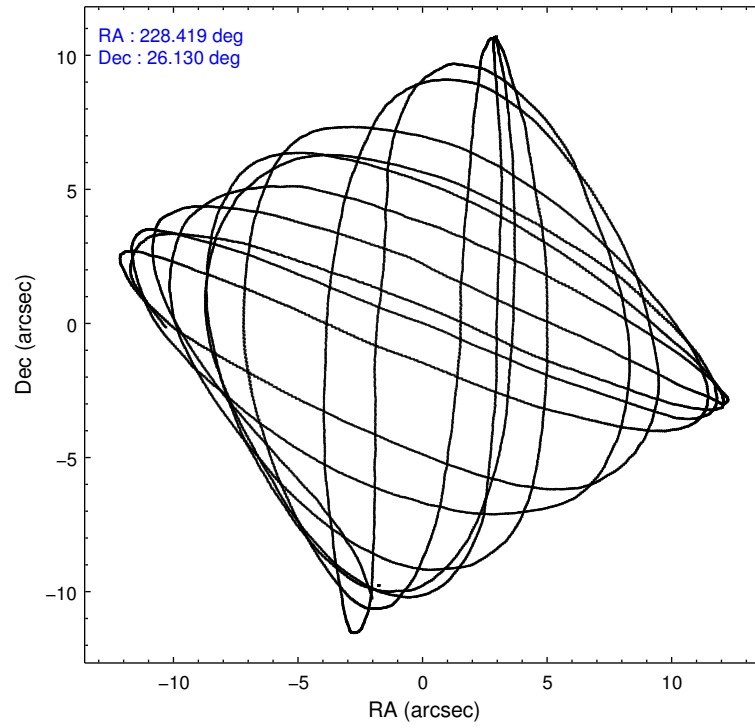
	ccd 2	ccd 3	ccd 5	ccd 6	ccd 7
grade 0 events	4023	3801	5393	3522	3875
	5%	5%	4%	4%	3%
grade 1 events	55	57	248	44	119
	0%	0%	0%	0%	0%
grade 2 events	1924	1749	16514	1999	9080
	2%	2%	13%	2%	8%
grade 3 events	852	885	2027	882	3881
	1%	1%	1%	1%	3%
grade 4 events	921	866	1968	908	3872
	1%	1%	1%	1%	3%
grade 5 events	2950	3509	8650	3642	10097
	3%	4%	7%	4%	9%
grade 6 events	1464	1637	29428	1930	24007
	1%	2%	24%	2%	22%
grade 7 events	65233	62240	55922	63154	52809
	84%	83%	46%	83%	49%

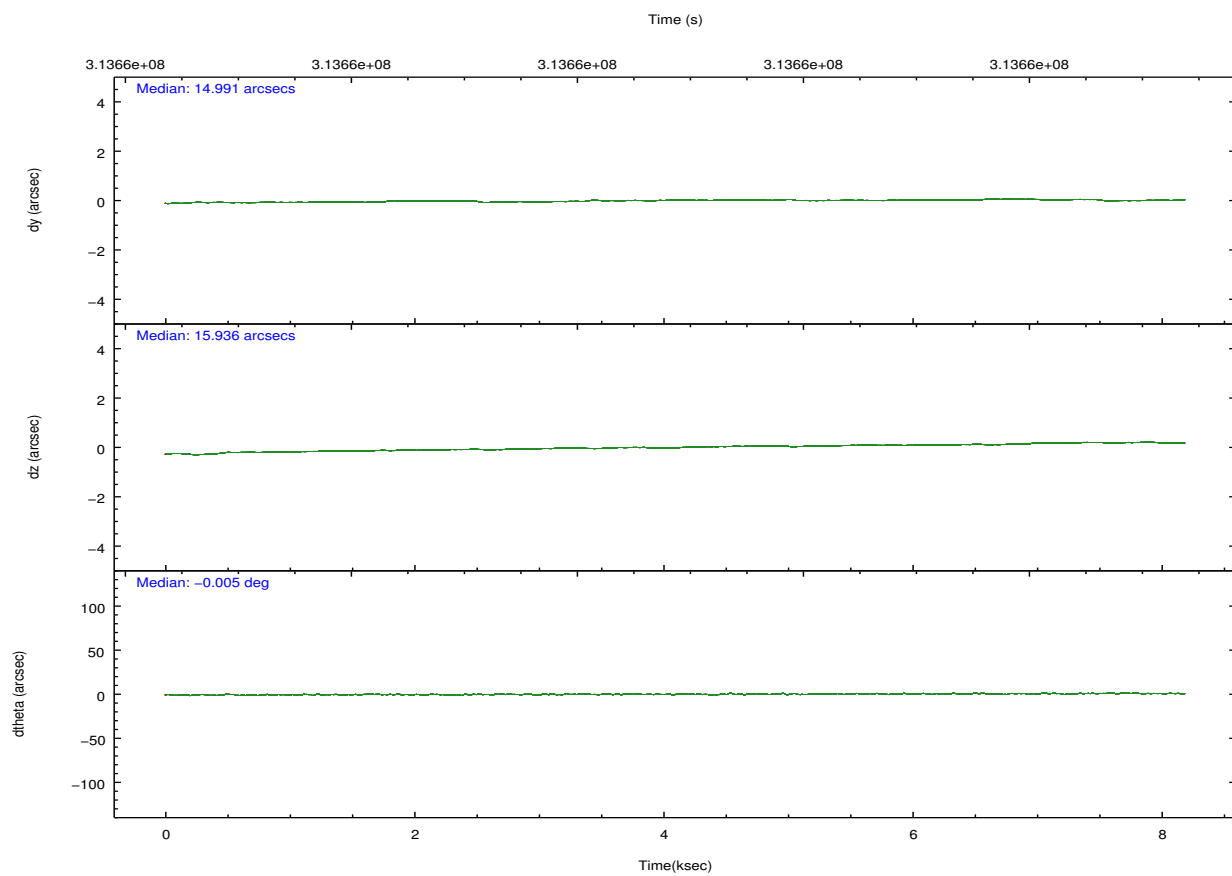
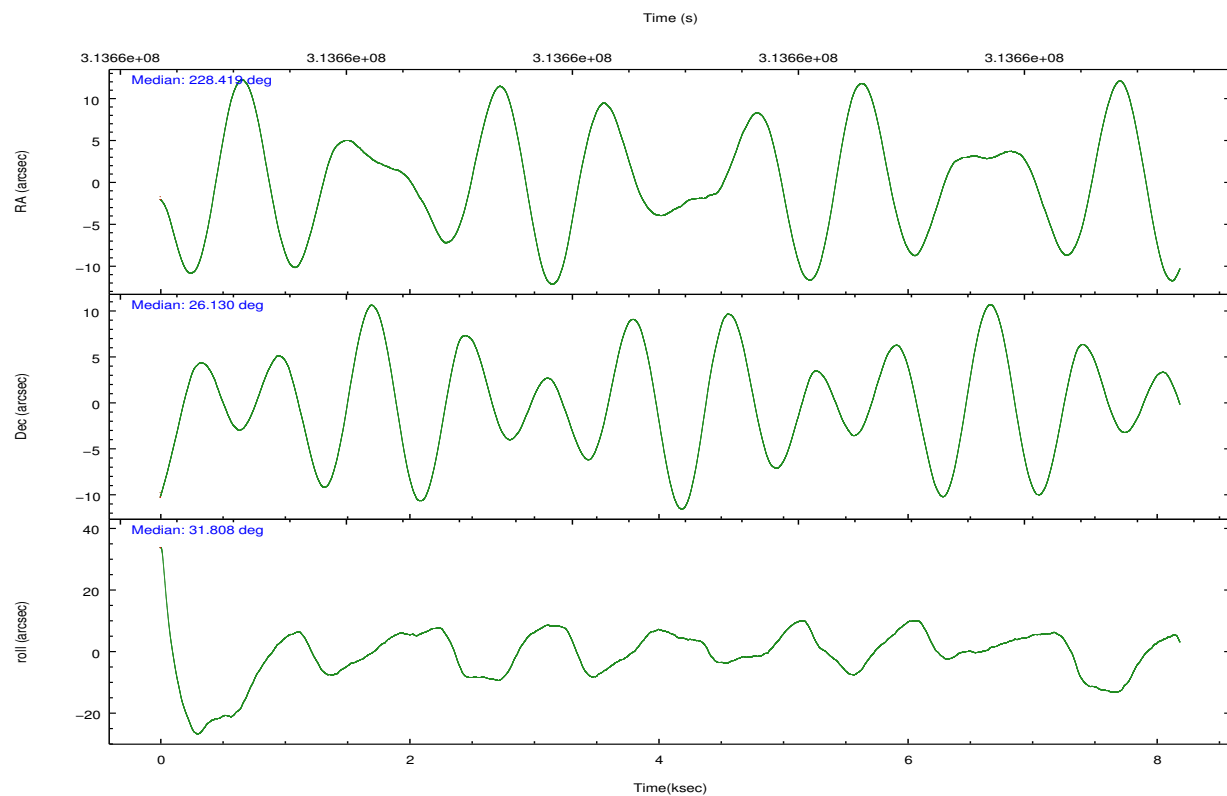


## 2.2 Compared Parameters

Parameter	Planned	Actual	Parameter	Planned	Actual
Instrument	ACIS	ACIS	Obspar format version number	7	7
Detector	ACIS-23567	ACIS-23567	Obspar file type	PREDICTED	ACTUAL
Grating	NONE	NONE	Obspar update status	NONE	UPDATED
Data mode	VFAINT	VFAINT	CCD I0 on	N	N
Observation mode	POINTING	POINTING	CCD I1 on	N	N
[deg] Pointing RA	228.405476	228.4194247824219	CCD I2 on	Y	Y
[deg] Pointing Dec	26.105397	26.12967930786324	CCD I3 on	Y	Y
[deg] Pointing Roll	31.667856	31.81842218455873	CCD S0 on	N	N
[mm] SIM focus pos	-0.684267	-0.6828225247311905	CCD S1 on	O1	Y
[mm] SIM defocus	0	0.001444936568705701	CCD S2 on	Y	Y
[mm] SIM translation stage pos	-190.132523	-190.1425803651734	CCD S3 on	Y	Y
[mm] SIM translation stage offset	0	0.01005778216563158	CCD S4 on	N	N
[s] Observation start time (MET)	313656950.184000	313656279.22461	CCD S5 on	N	N
Observation start date	2007-12-10T06:54:45	2007-12-10T06:44:39	Number of optional ACIS chips dropped	0	0
[s] Observation end time (MET)	313664950.184000	313665599.03756	On-chip summing requested	N	N
Observation end date	2007-12-10T09:08:05	2007-12-10T09:19:59	Subarray requested	NONE	NONE
Read mode	TIMED	TIMED	Alternating exposures requested	N	N
			[s] Primary exposure time	0.000000	3.1

## 2.3 Aspect



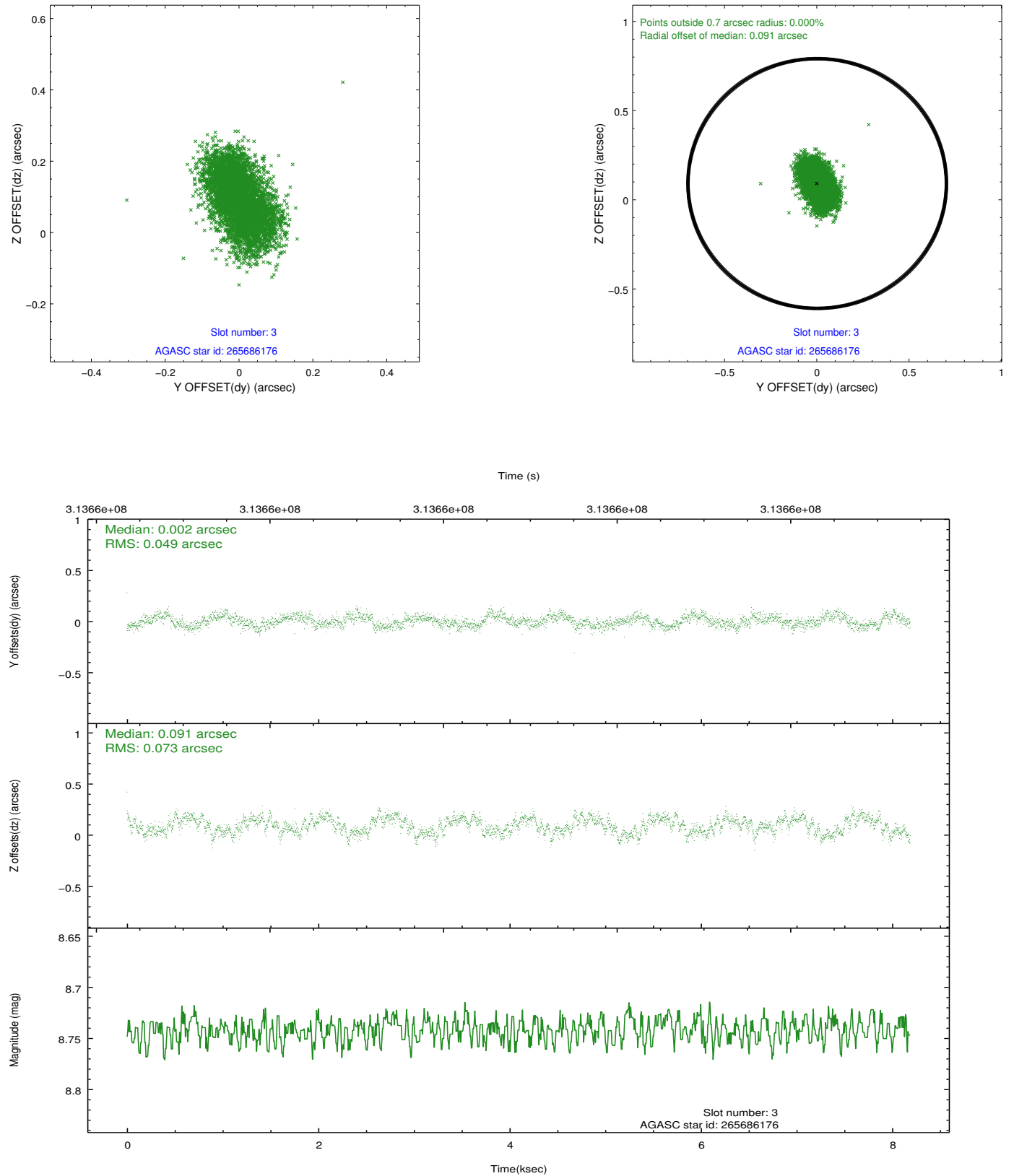


### Slot Statistics

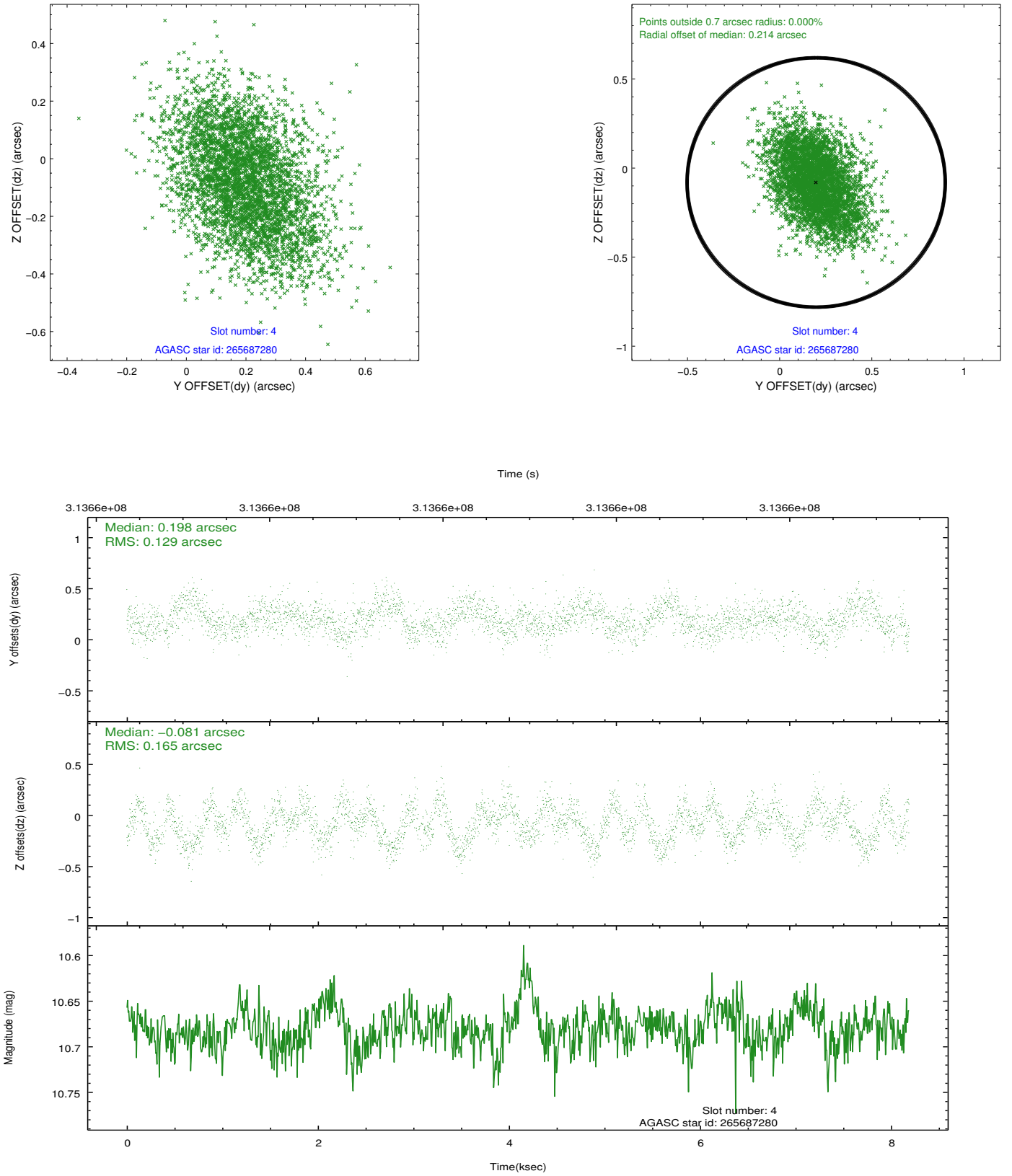
slot	status	id	mag	n_pts	med_dy	med_dz	dr1	dr2	ra	dec	mean_y	mean_z
0	FID	ACIS-S-1	7.18	1998	0.031	-0.076	0.009	0.016	0.000000	0.000000	928.10	-1732.99
1	FID	ACIS-S-4	7.19	1998	0.136	0.042	0.007	0.012	0.000000	0.000000	2146.00	170.57
2	FID	ACIS-S-5	7.22	1998	-0.194	0.046	0.007	0.013	0.000000	0.000000	-1820.11	164.95
3	GUIDE	265686176	8.74	3994	0.002	0.091	0.095	0.149	228.479468	25.620309	-711.79	-1612.47
4	GUIDE	265687280	10.68	3894	0.198	-0.081	0.223	0.366	227.721645	25.994754	-2089.37	826.88
5	GUIDE	265688024	9.39	3993	-0.225	-0.047	0.094	0.155	228.603520	26.597843	1472.84	1175.08
6	GUIDE	265693208	10.53	3981	0.029	-0.100	0.189	0.299	228.667804	26.686595	1817.27	1339.17
7	GUIDE	265817216	7.44	3993	-0.005	0.132	0.084	0.127	228.922695	25.642536	556.78	-2296.02

## 2.4 Star Slots

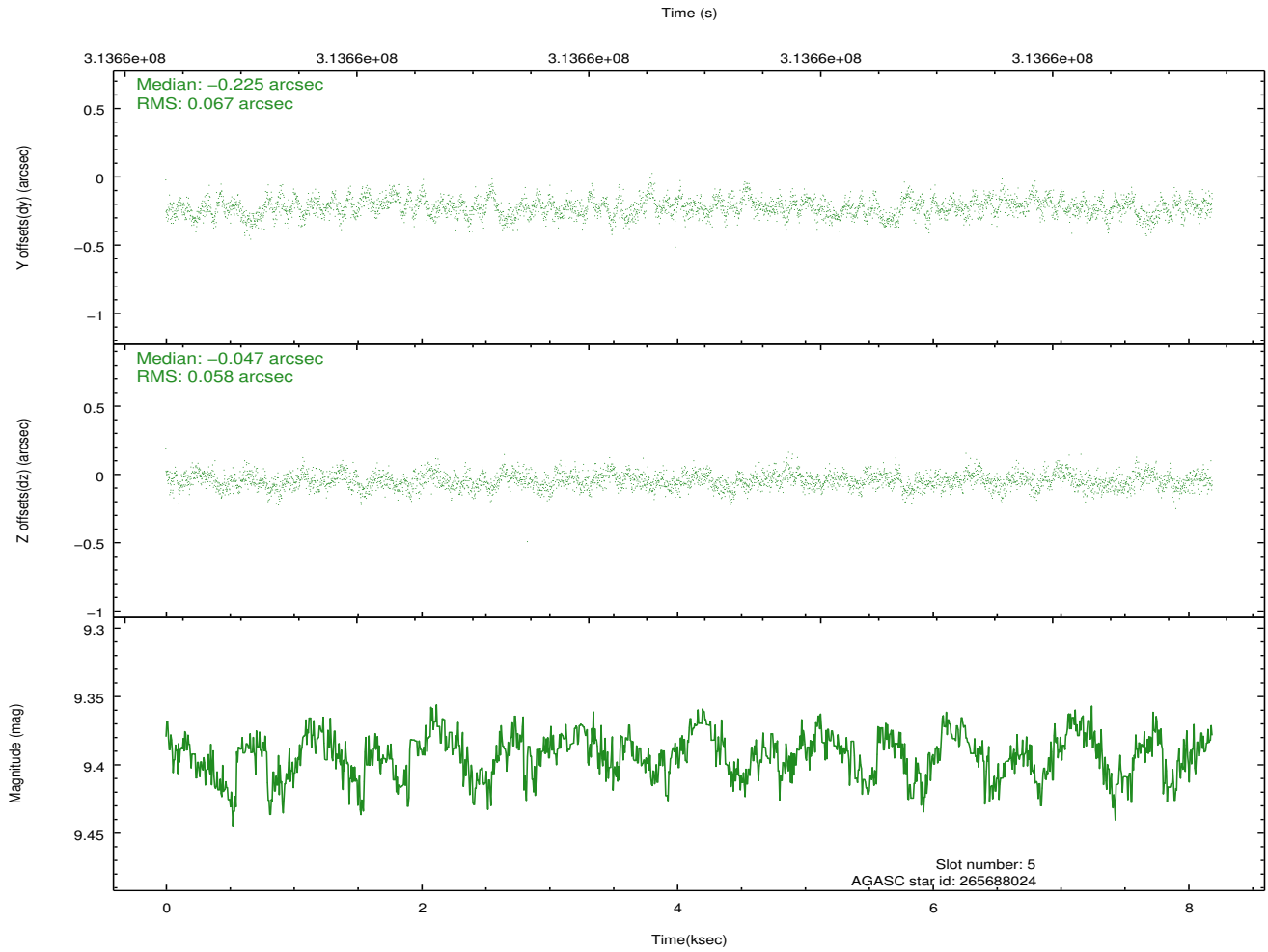
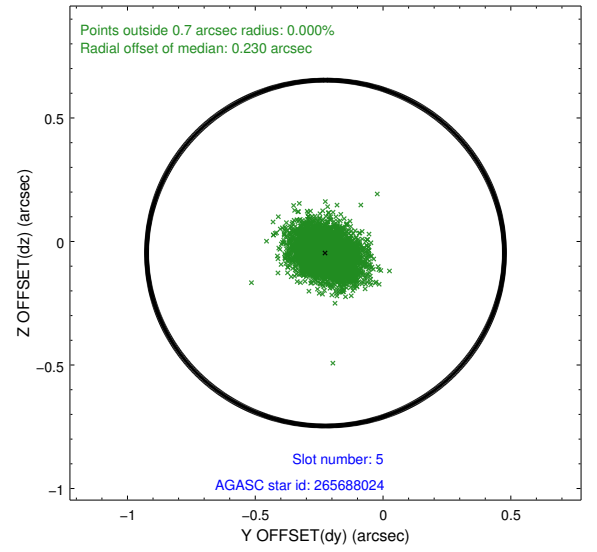
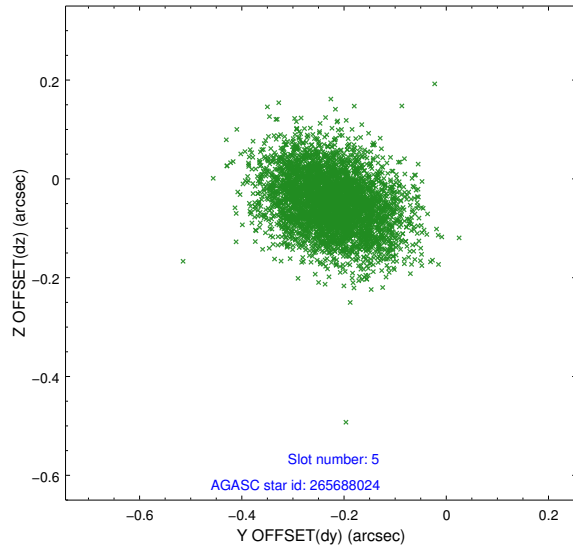
### 2.4.1 Slot 3



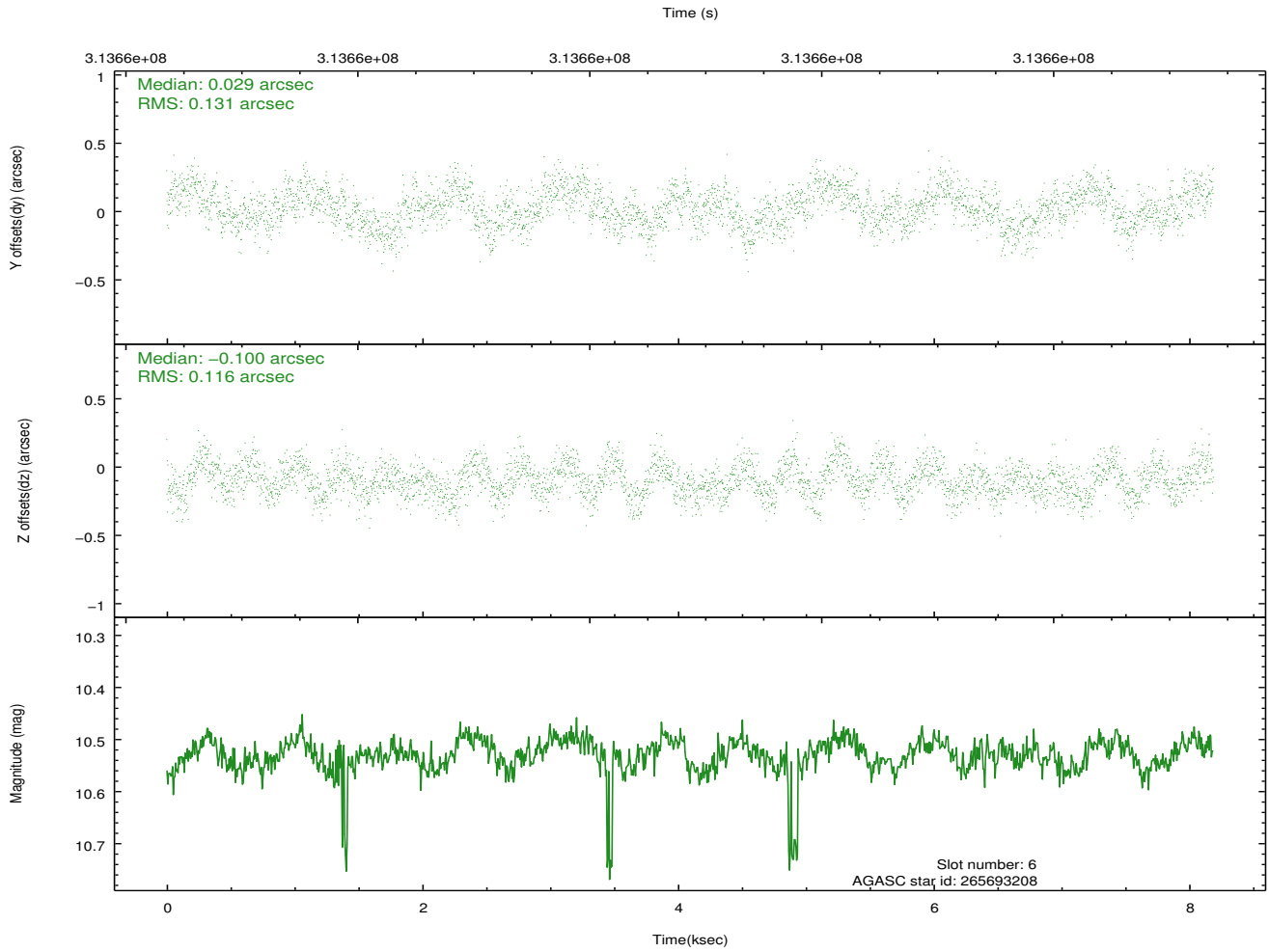
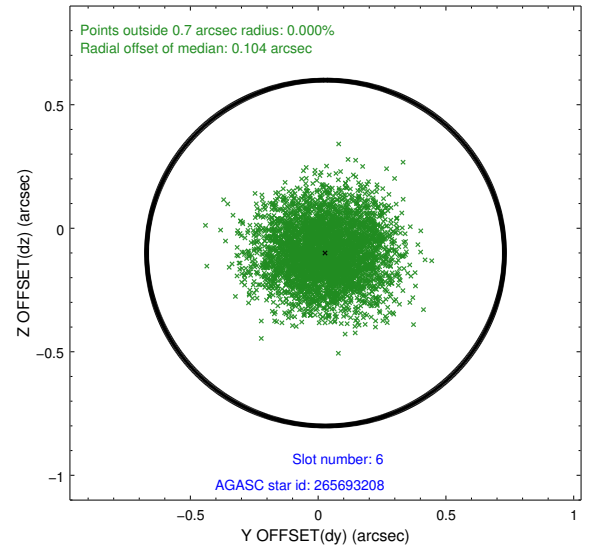
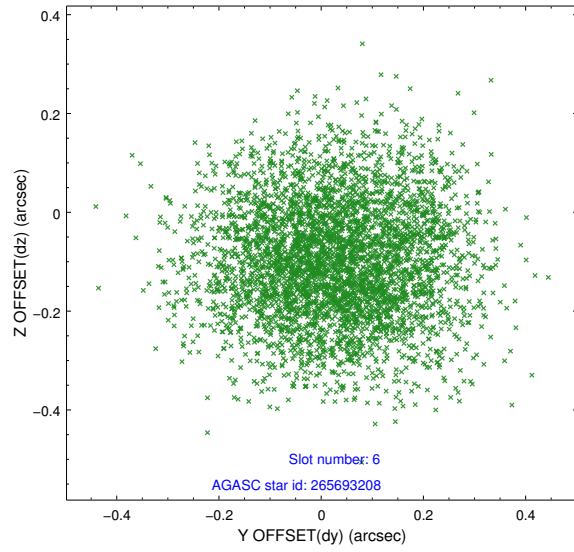
## 2.4.2 Slot 4



### 2.4.3 Slot 5

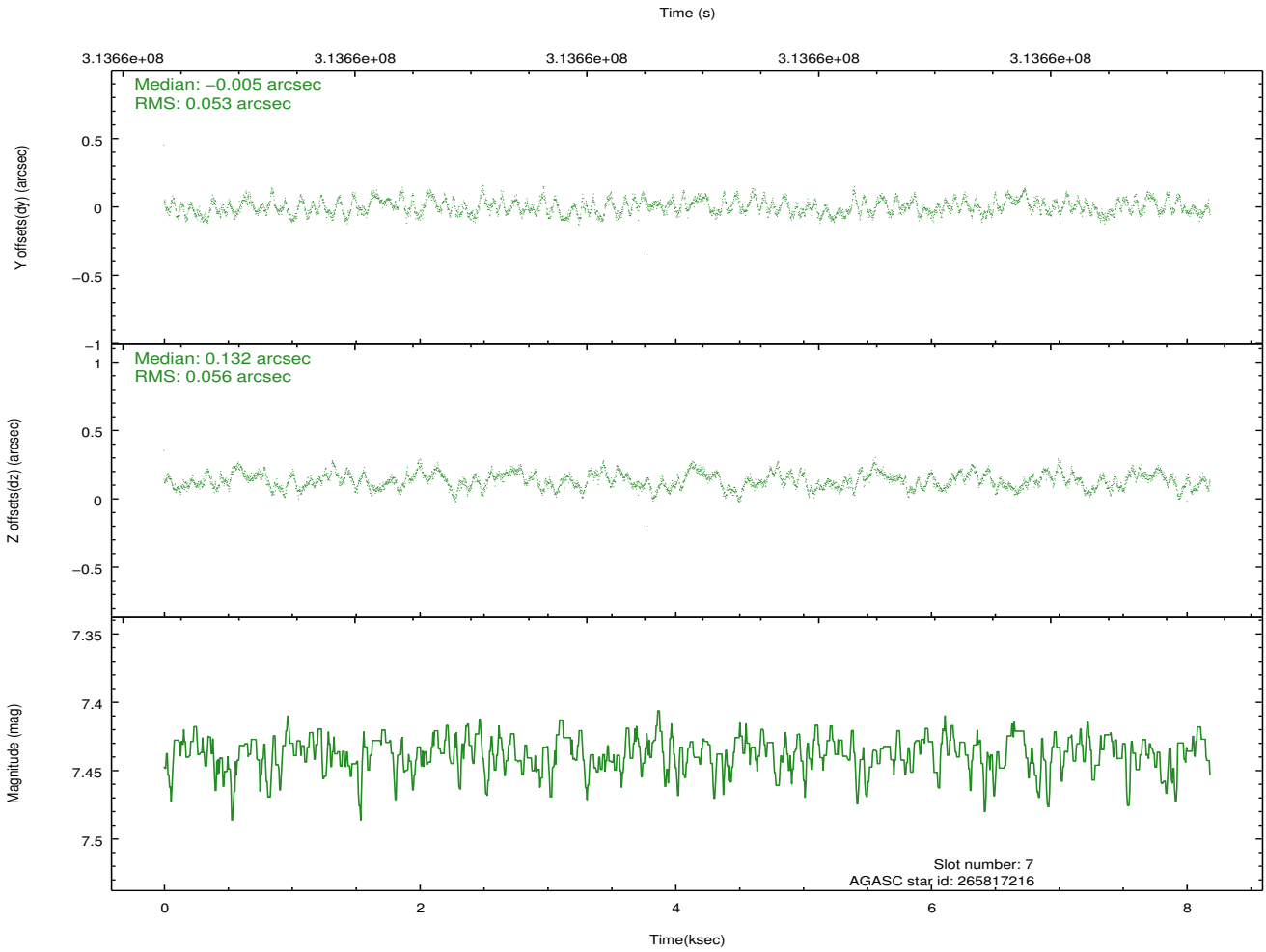
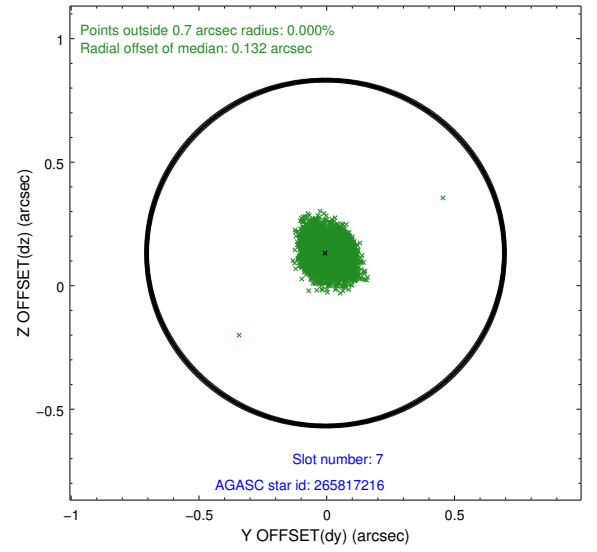
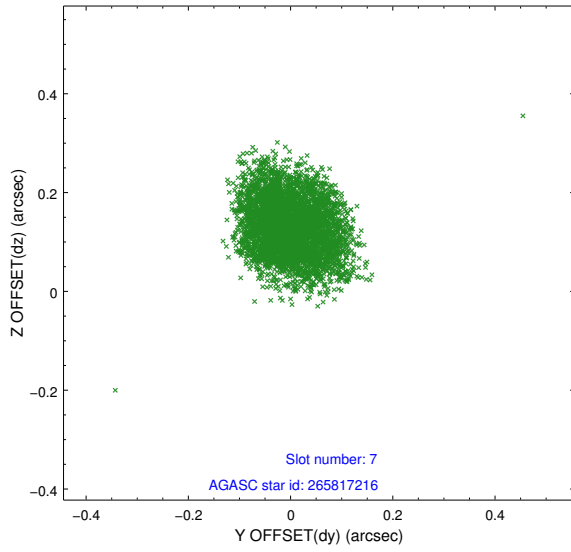


## 2.4.4 Slot 6



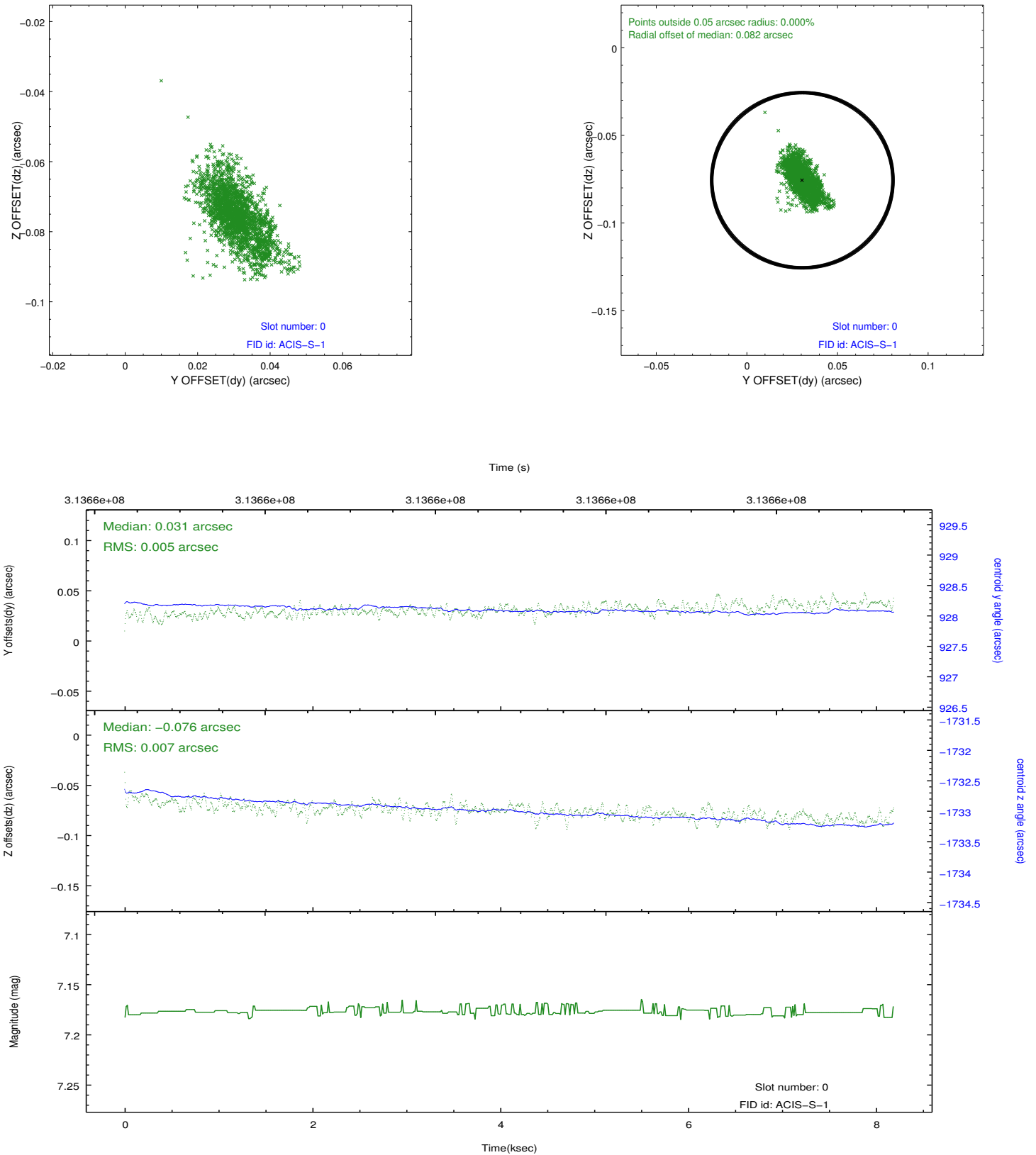


## 2.4.5 Slot 7

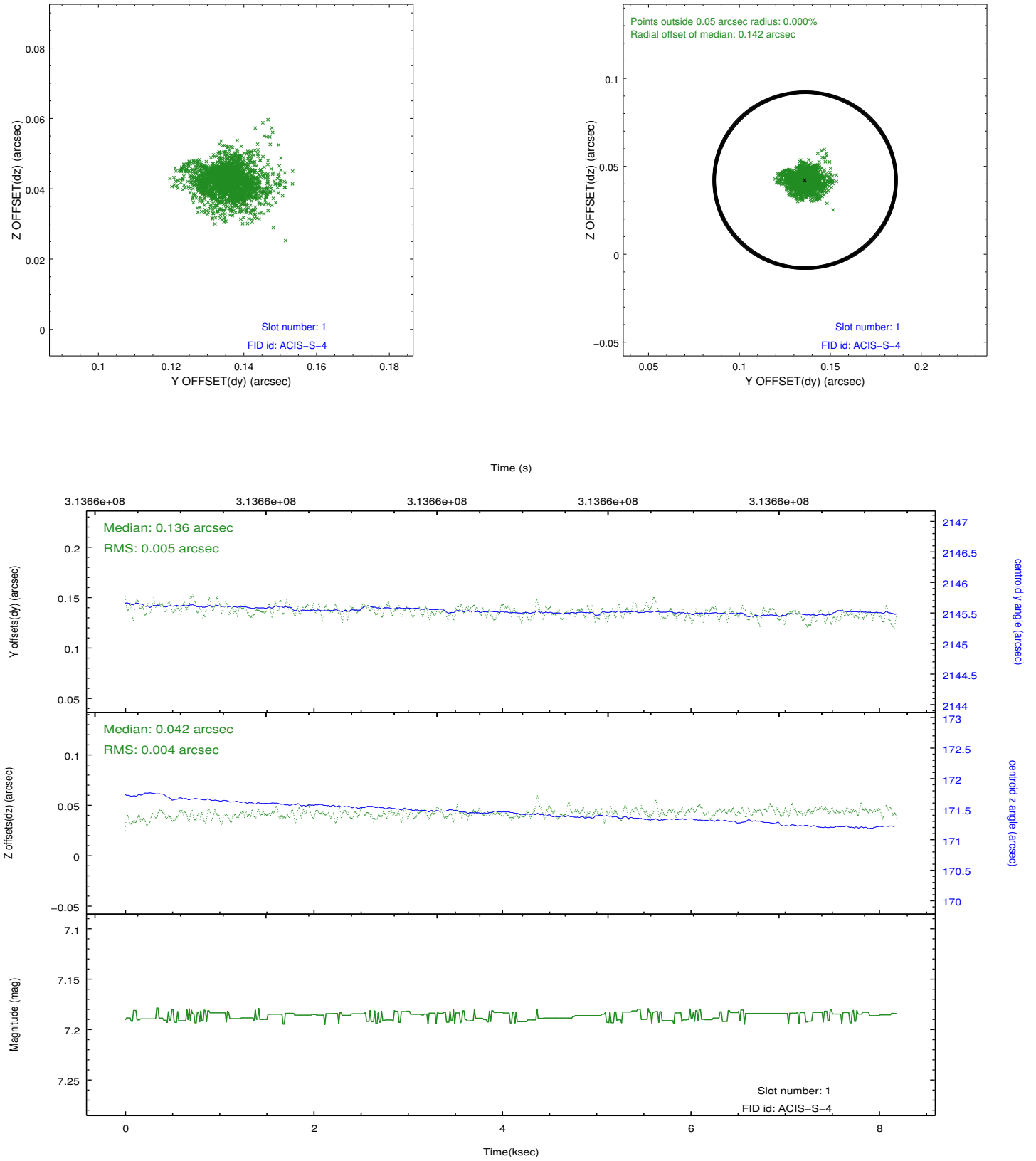


## 2.5 FID Slots

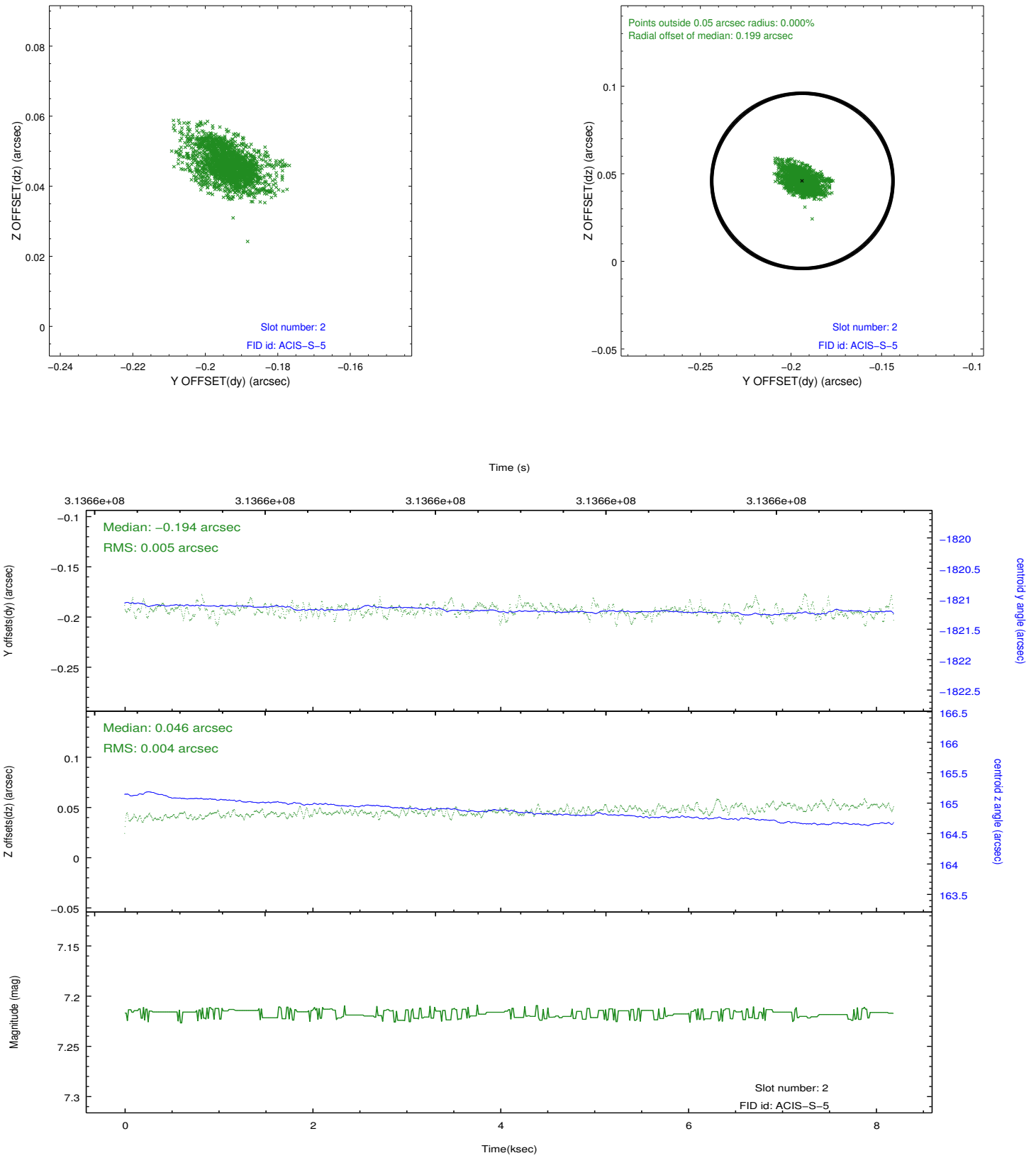
### 2.5.1 Slot 0



## 2.5.2 Slot 1



### 2.5.3 Slot 2



## A Summary

### A.1 Status

V&V Scientist	Jen Lauer
V&V Date (YYYY-MM-DD)	2012.05.08
V&V Edition	1
V&V Disposition and Status	OK
V&V Charge Time	7.77170005

### A.2 Comments