

# V&V Reference Report

## L2 ASCDS Version : 8.4.4

Observation 9301 - L2 Version 2  
Chandra X-Ray Center

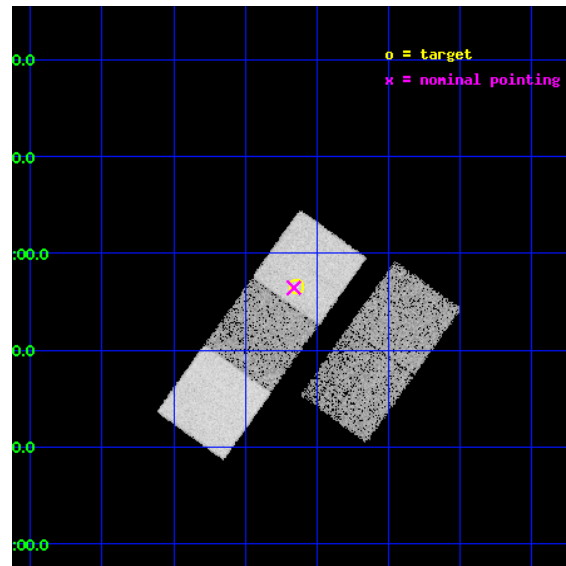
L2 Processing Date : May 7 2012

## Contents

<b>1</b>	<b>Front</b>	<b>2</b>
<b>2</b>	<b>OBI</b>	<b>3</b>
2.1	OBI . . . . .	3
2.1.1	Images . . . . .	3
2.1.2	Bias . . . . .	3
2.1.3	Parameters . . . . .	4
2.1.4	Events . . . . .	4
2.2	Compared Parameters . . . . .	5
2.3	Aspect . . . . .	6
2.4	Star Slots . . . . .	9
2.4.1	Slot 3 . . . . .	9
2.4.2	Slot 4 . . . . .	10
2.4.3	Slot 5 . . . . .	11
2.4.4	Slot 6 . . . . .	12
2.4.5	Slot 7 . . . . .	13
2.5	FID Slots . . . . .	14
2.5.1	Slot 0 . . . . .	14
2.5.2	Slot 1 . . . . .	15
2.5.3	Slot 2 . . . . .	16
<b>A</b>	<b>Summary</b>	<b>17</b>
A.1	Status . . . . .	17
A.2	Comments . . . . .	17

# 1 Front

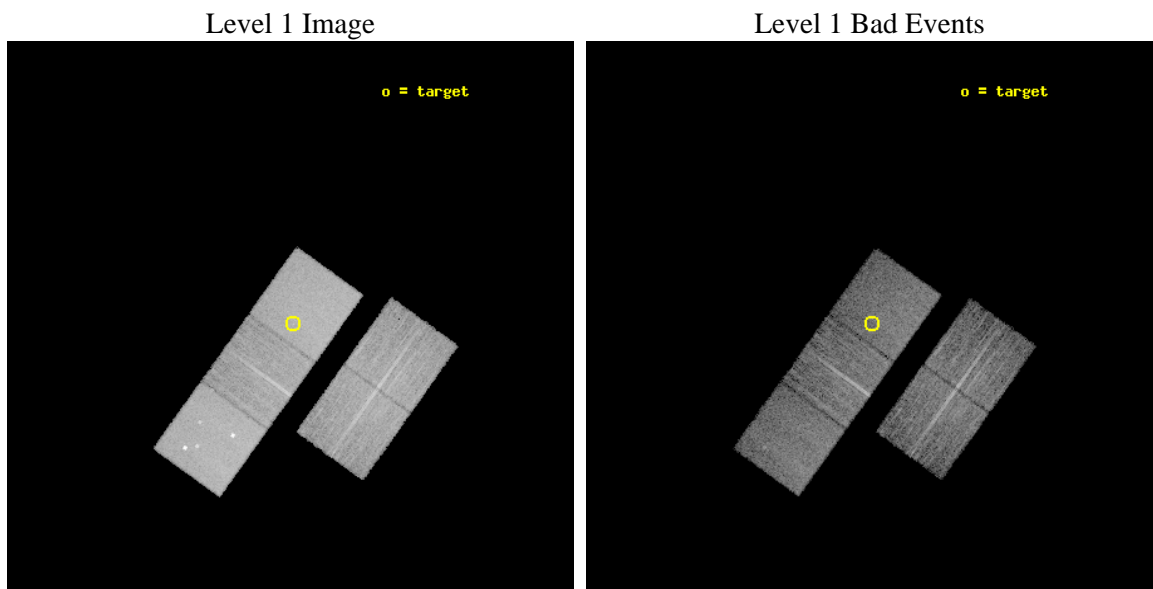
seq_num	701741	Sequence number
obs_id	9301	Observation id
title	Towards a Complete Sample: 3CR Extragalactic Radio Sources with $z < 0.3$	Proposal title
observer	Dr. Daniel Harris	Principal investigator
object	3C135	Source name
dtcycle	0	&#160
cycle	P	events from which exps? Prim/Second/Both
ra_targ	78.535833	Observer's specified target RA [deg]
dec_targ	0.942417	Observer's specified target Dec [deg]
ra_nom	78.540335562531	Nominal RA [deg]
dec_nom	0.94060527634462	Nominal Dec [deg]
roll_nom	305.64611658077	Nominal Roll [deg]
revision	2	Processing version of data
ontime	8035.2000617981	Sum of GTIs [s]
livetime	7930.2142575625	Livetime [s]
ontime2	8035.2000617981	Sum of GTIs [s]
ontime3	8022.6360800862	Sum of GTIs [s]
ontime5	8035.2000617981	Sum of GTIs [s]
ontime6	8035.2000617981	Sum of GTIs [s]
ontime7	8035.2000617981	Sum of GTIs [s]
l2events	124101	Number of level 2 events



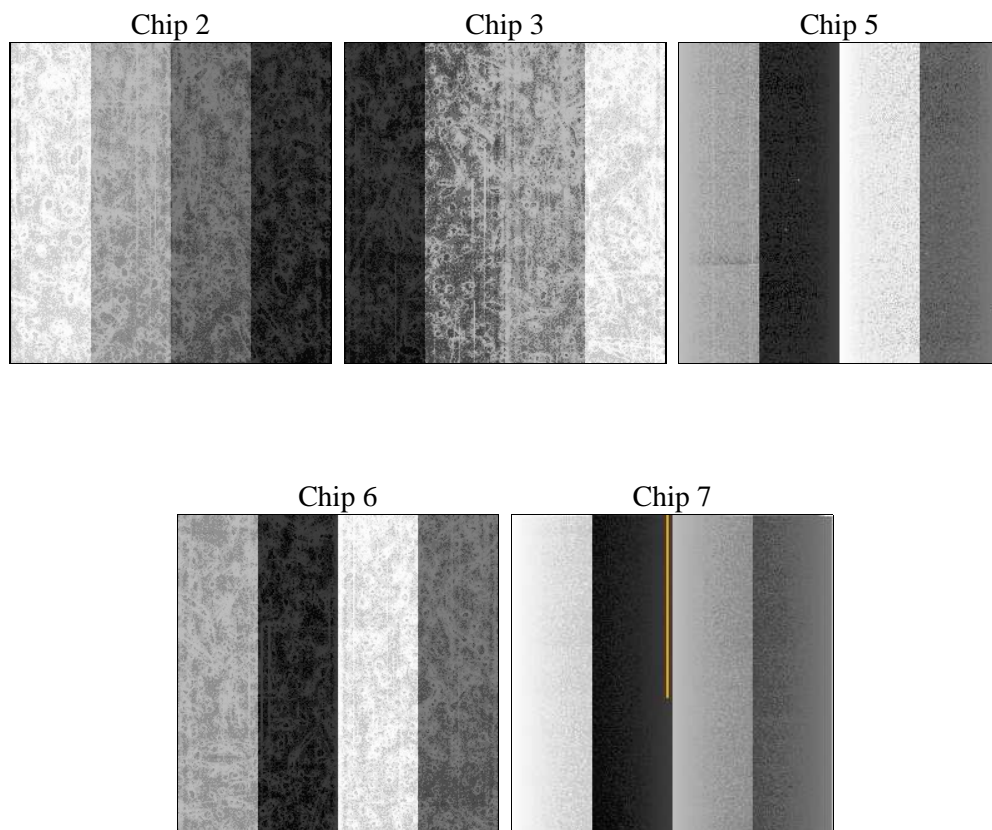
## 2 OBI

### 2.1 OBI

#### 2.1.1 Images



#### 2.1.2 Bias



### 2.1.3 Parameters

obi_num	0	Obi number	sched_exp_time	8000.000000	[s] Scheduled observation exposure time
ascdsver	8.4.4	Processing system revision	ontime	8035.2000617981	Sum of GTIs [s]
caldsver	4.4.9	&#160	ontime2	8035.2000617981	Sum of GTIs [s]
date	2012-05-08T01:42:12	Date and time of file creation	ontime3	8022.6360800862	Sum of GTIs [s]
revision	2	Processing version of data	ontime5	8035.2000617981	Sum of GTIs [s]
			ontime6	8035.2000617981	Sum of GTIs [s]
			ontime7	8035.2000617981	Sum of GTIs [s]
			l1events	463264	Number of level 1 events

### 2.1.4 Events

	ccd 2	ccd 3	ccd 5	ccd 6	ccd 7
level 1 events	77203	75879	123018	79431	107733
rejected events	67207	65236	64475	68665	62478
rejected %	87%	85%	52%	86%	57%

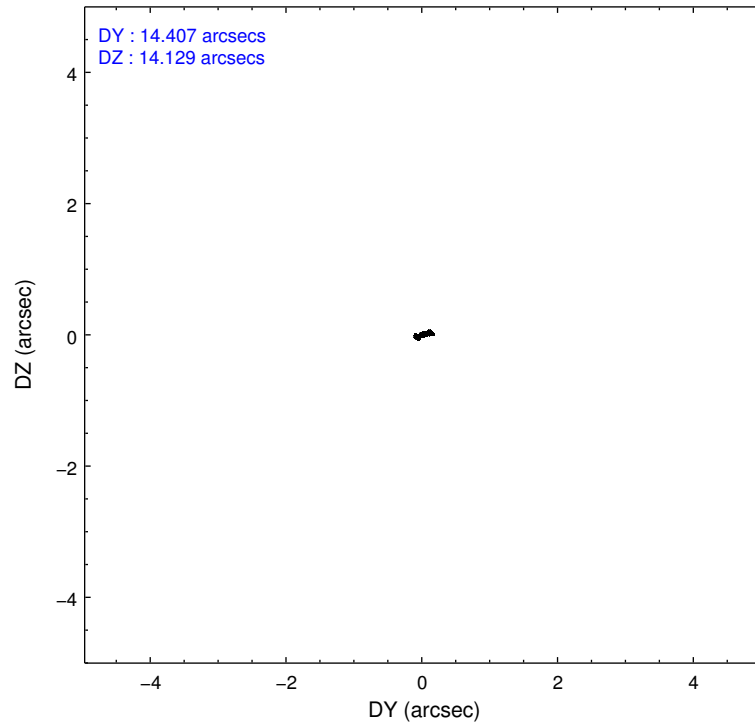
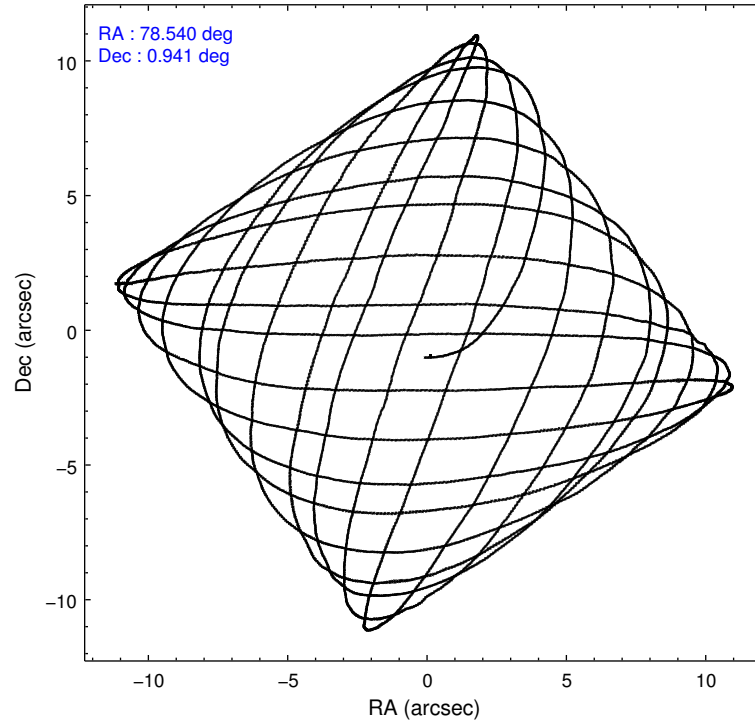
	ccd 2	ccd 3	ccd 5	ccd 6	ccd 7
grade 0 events	4812	5151	6964	4765	3825
	6%	6%	5%	5%	3%
grade 1 events	51	54	264	49	102
	0%	0%	0%	0%	0%
grade 2 events	1950	2008	18400	2242	9109
	2%	2%	14%	2%	8%
grade 3 events	829	911	1843	922	3812
	1%	1%	1%	1%	3%
grade 4 events	876	933	1828	881	3618
	1%	1%	1%	1%	3%
grade 5 events	3029	3479	8026	3724	9722
	3%	4%	6%	4%	9%
grade 6 events	1537	1648	29545	1959	24923
	1%	2%	24%	2%	23%
grade 7 events	64119	61695	56148	64889	52622
	83%	81%	45%	81%	48%

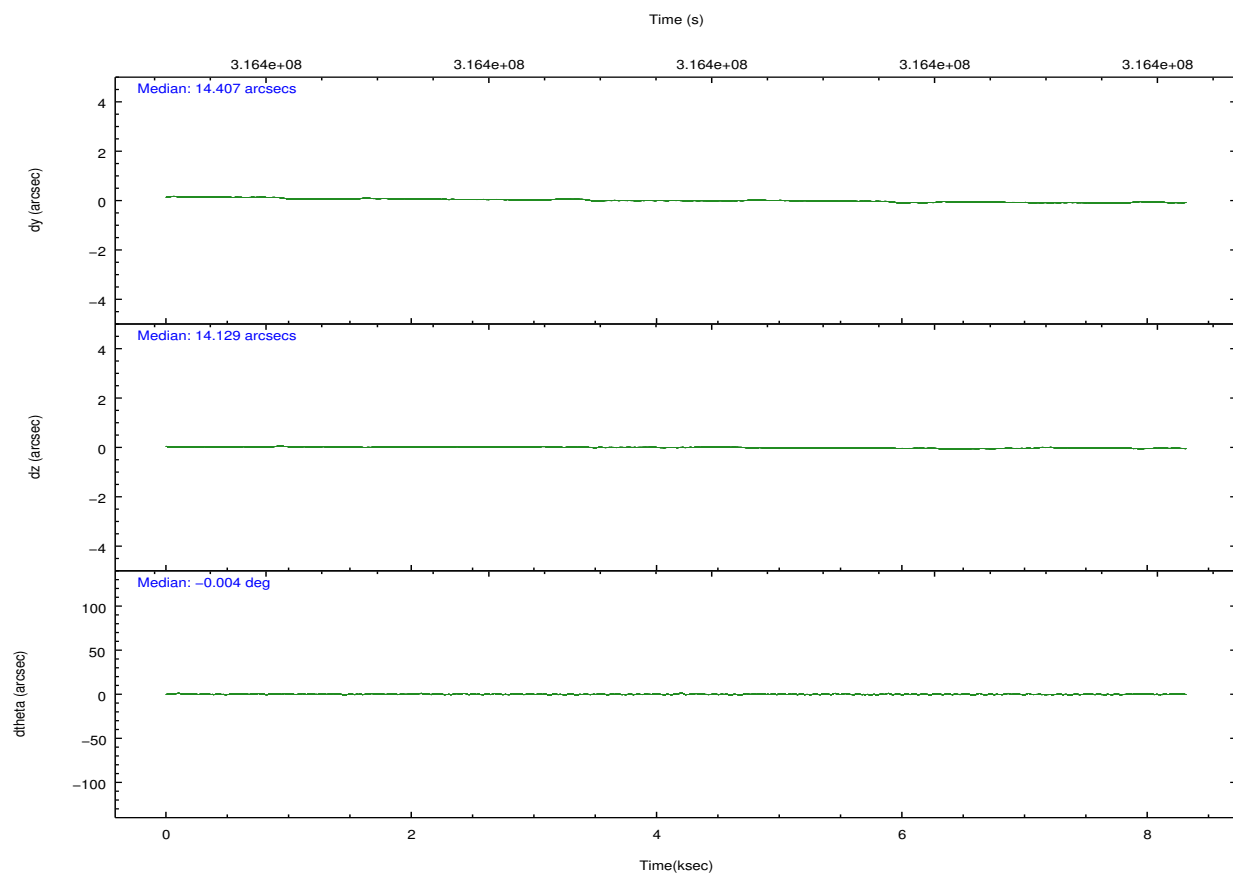
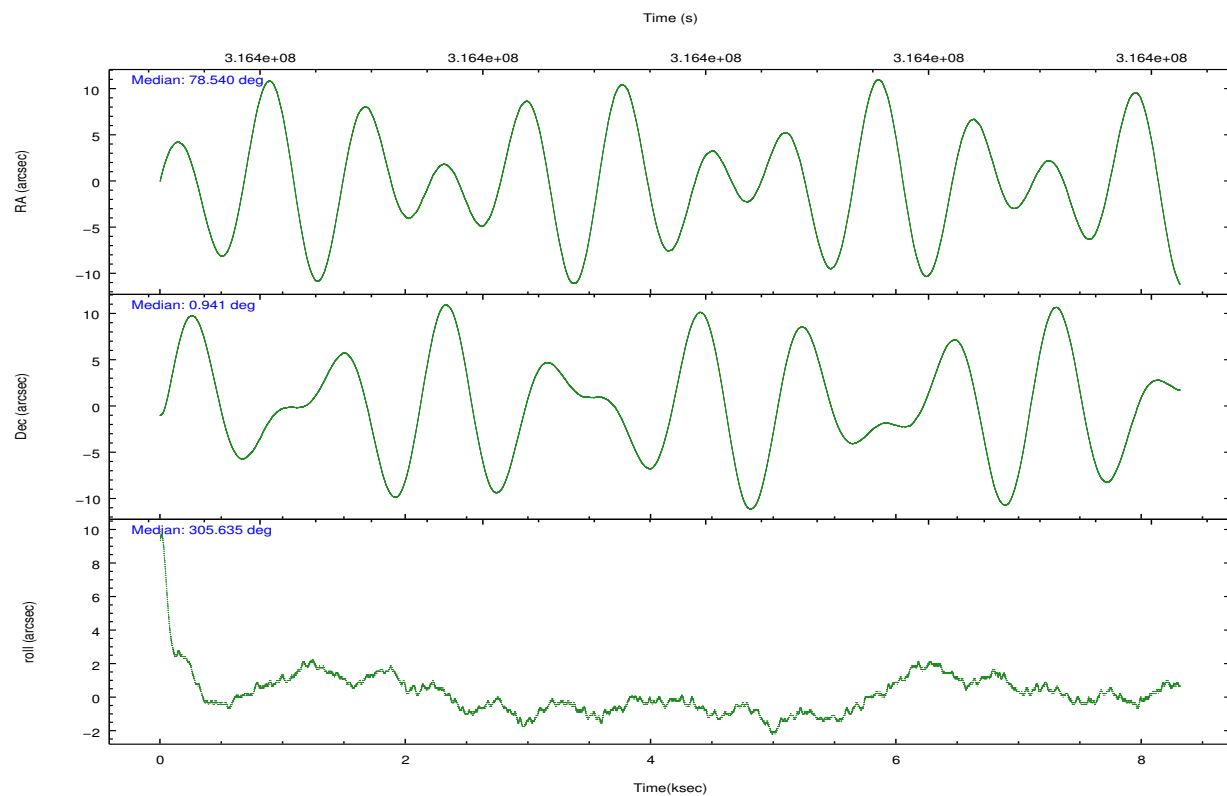


## 2.2 Compared Parameters

Parameter	Planned	Actual	Parameter	Planned	Actual
Instrument	ACIS	ACIS	Obspar format version number	7	7
Detector	ACIS-23567	ACIS-23567	Obspar file type	PREDICTED	ACTUAL
Grating	NONE	NONE	Obspar update status	NONE	UPDATED
Data mode	VFAINT	VFAINT	CCD I0 on	N	N
Observation mode	POINTING	POINTING	CCD I1 on	N	N
[deg] Pointing RA	78.515243	78.5403355625312	CCD I2 on	Y	Y
[deg] Pointing Dec	0.951485	0.9406052763446227	CCD I3 on	Y	Y
[deg] Pointing Roll	305.489888	305.6461165807735	CCD S0 on	N	N
[mm] SIM focus pos	-0.684267	-0.6828225247311905	CCD S1 on	O1	Y
[mm] SIM defocus	0	0.001444936568705701	CCD S2 on	Y	Y
[mm] SIM translation stage pos	-190.132523	-190.1425803651734	CCD S3 on	Y	Y
[mm] SIM translation stage offset	0	0.01005778216563158	CCD S4 on	N	N
[s] Observation start time (MET)	316395836.184000	316394842.58214	CCD S5 on	N	N
Observation start date	2008-01-10T23:42:51	2008-01-10T23:27:22	Number of optional ACIS chips dropped	0	0
[s] Observation end time (MET)	316403836.184000	316404676.43261	On-chip summing requested	N	N
Observation end date	2008-01-11T01:56:11	2008-01-11T02:11:16	Subarray requested	NONE	NONE
Read mode	TIMED	TIMED	Alternating exposures requested	N	N
			[s] Primary exposure time	0.000000	3.1

## 2.3 Aspect



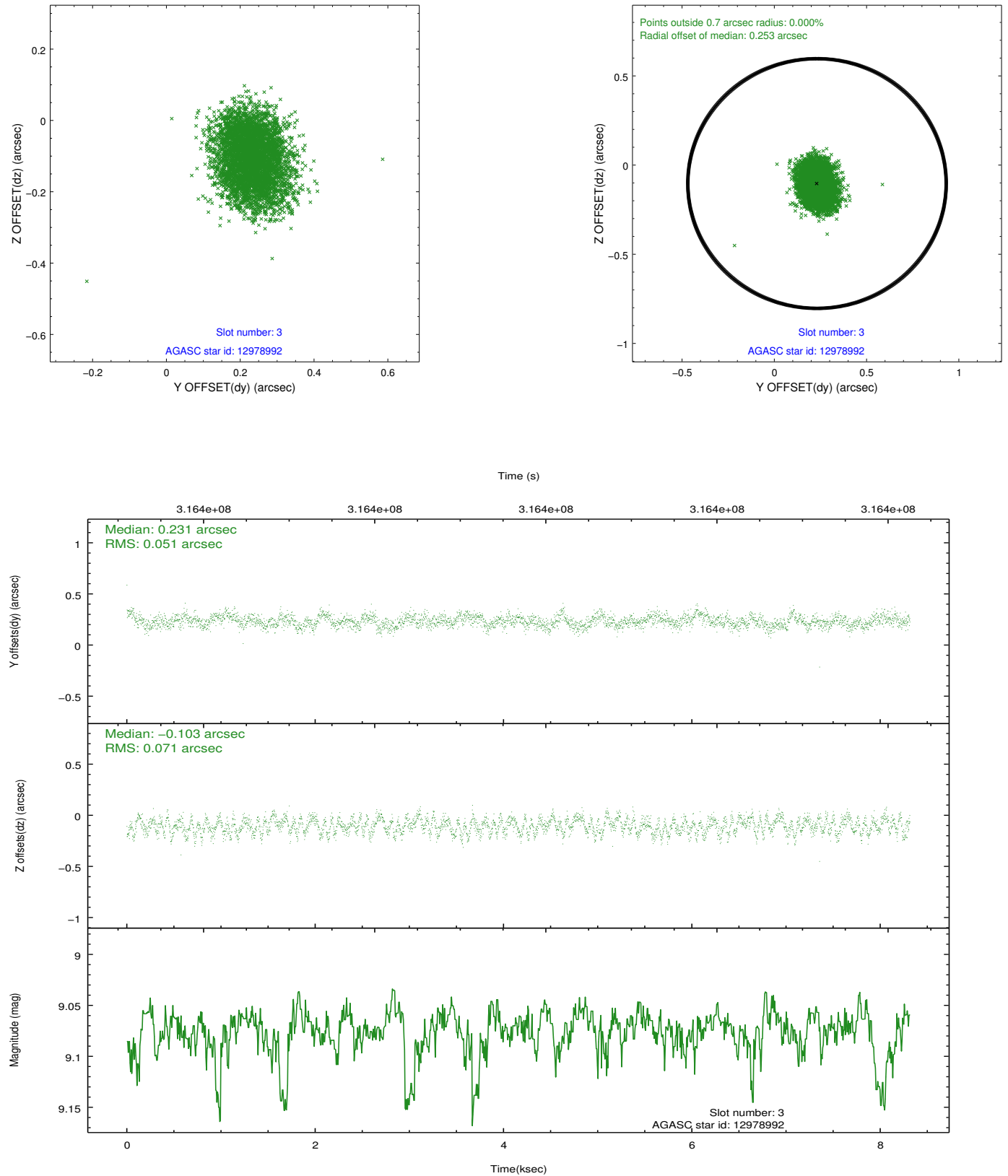


### Slot Statistics

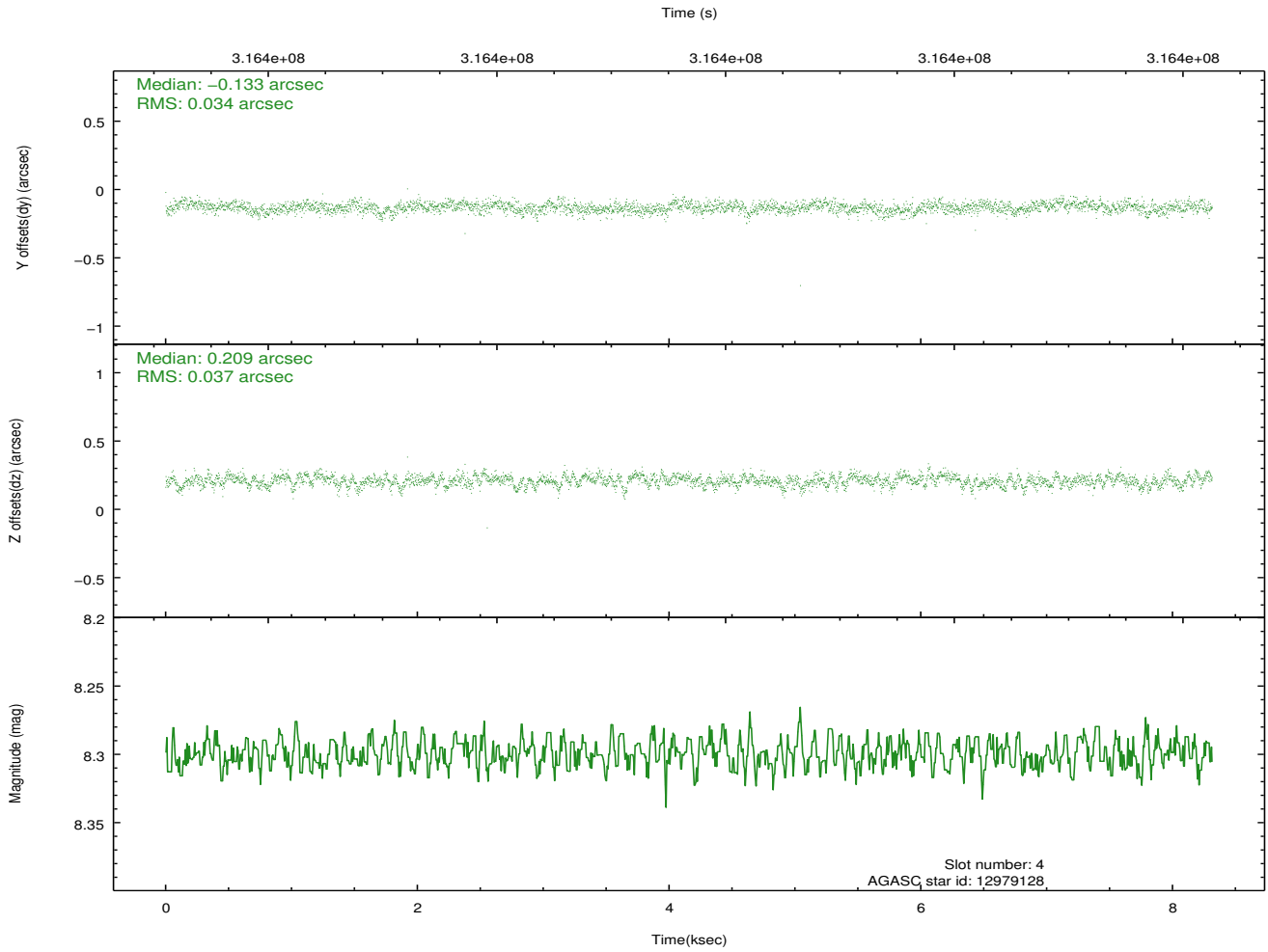
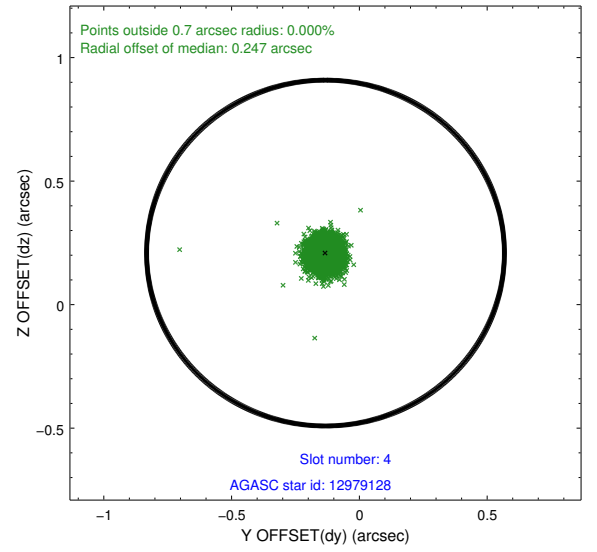
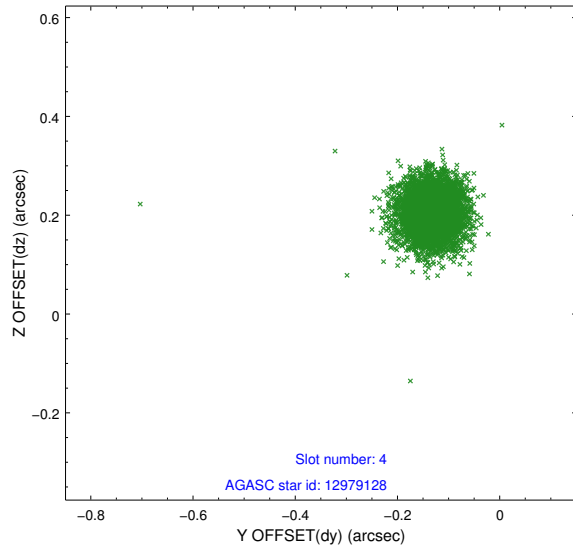
slot	status	id	mag	n_pts	med_dy	med_dz	dr1	dr2	ra	dec	mean_y	mean_z
0	FID	ACIS-S-2	7.10	2028	-0.080	-0.063	0.006	0.011	0.000000	0.000000	-767.45	-1735.49
1	FID	ACIS-S-4	7.19	2028	0.213	0.055	0.005	0.010	0.000000	0.000000	2145.82	172.41
2	FID	ACIS-S-5	7.22	2028	-0.164	0.017	0.007	0.011	0.000000	0.000000	-1819.52	166.81
3	GUIDE	12978992	9.07	4054	0.231	-0.103	0.093	0.148	78.057927	0.878077	-739.67	-1493.77
4	GUIDE	12979128	8.30	4055	-0.133	0.209	0.052	0.086	78.075898	1.326359	-2016.58	-504.71
5	GUIDE	12980304	8.93	4050	-0.050	-0.022	0.074	0.119	78.274744	0.497440	828.44	-1653.64
6	GUIDE	13115200	8.94	4055	0.105	-0.027	0.097	0.160	78.990143	1.327563	-109.86	2177.46
7	GUIDE	13120424	6.85	4056	-0.152	-0.059	0.060	0.101	78.799488	1.556152	-1178.76	2097.12

## 2.4 Star Slots

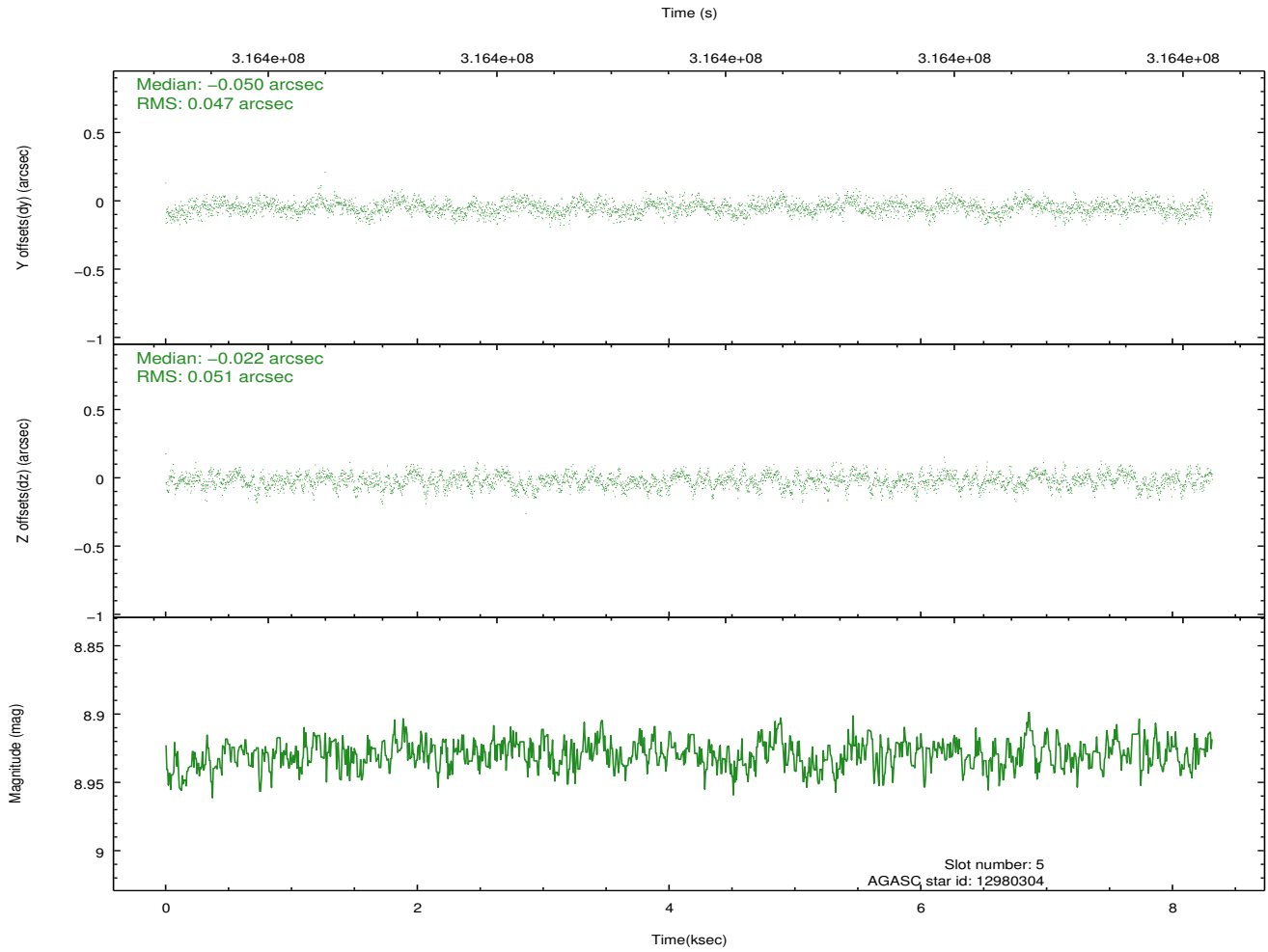
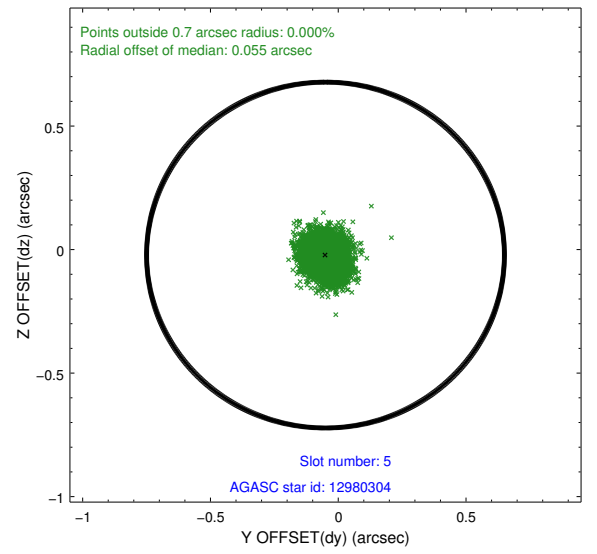
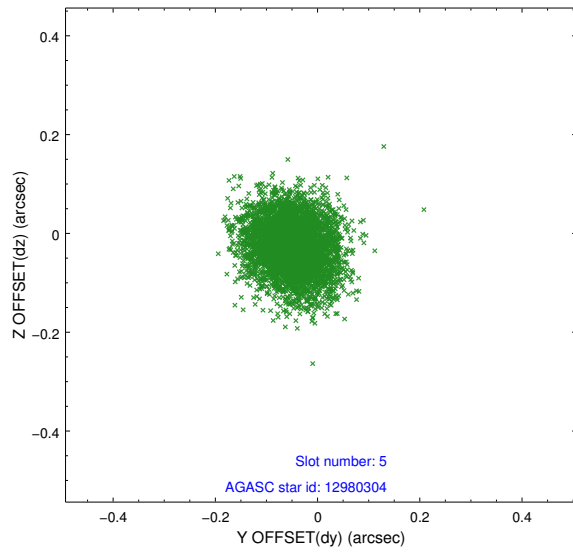
### 2.4.1 Slot 3



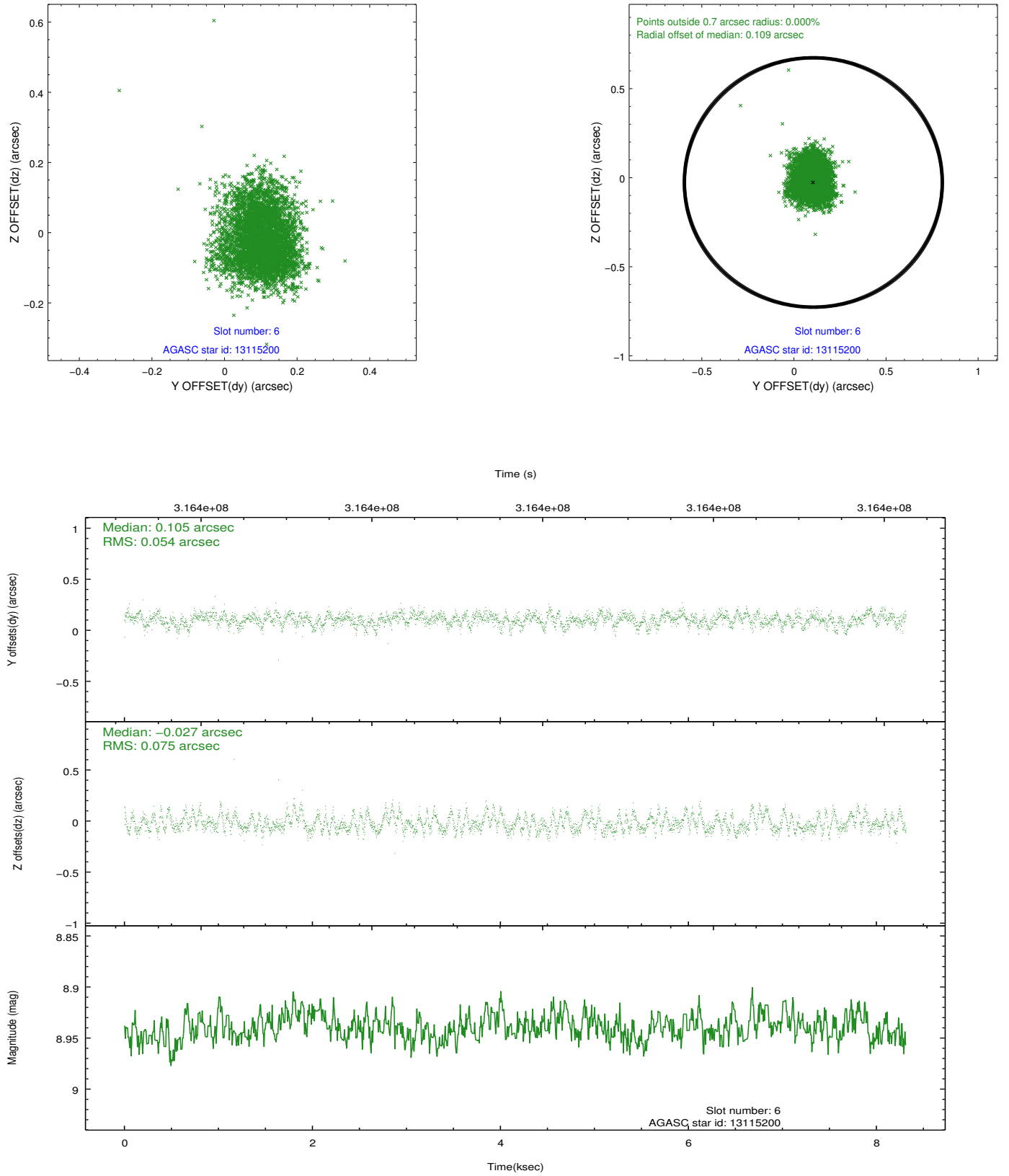
## 2.4.2 Slot 4



### 2.4.3 Slot 5

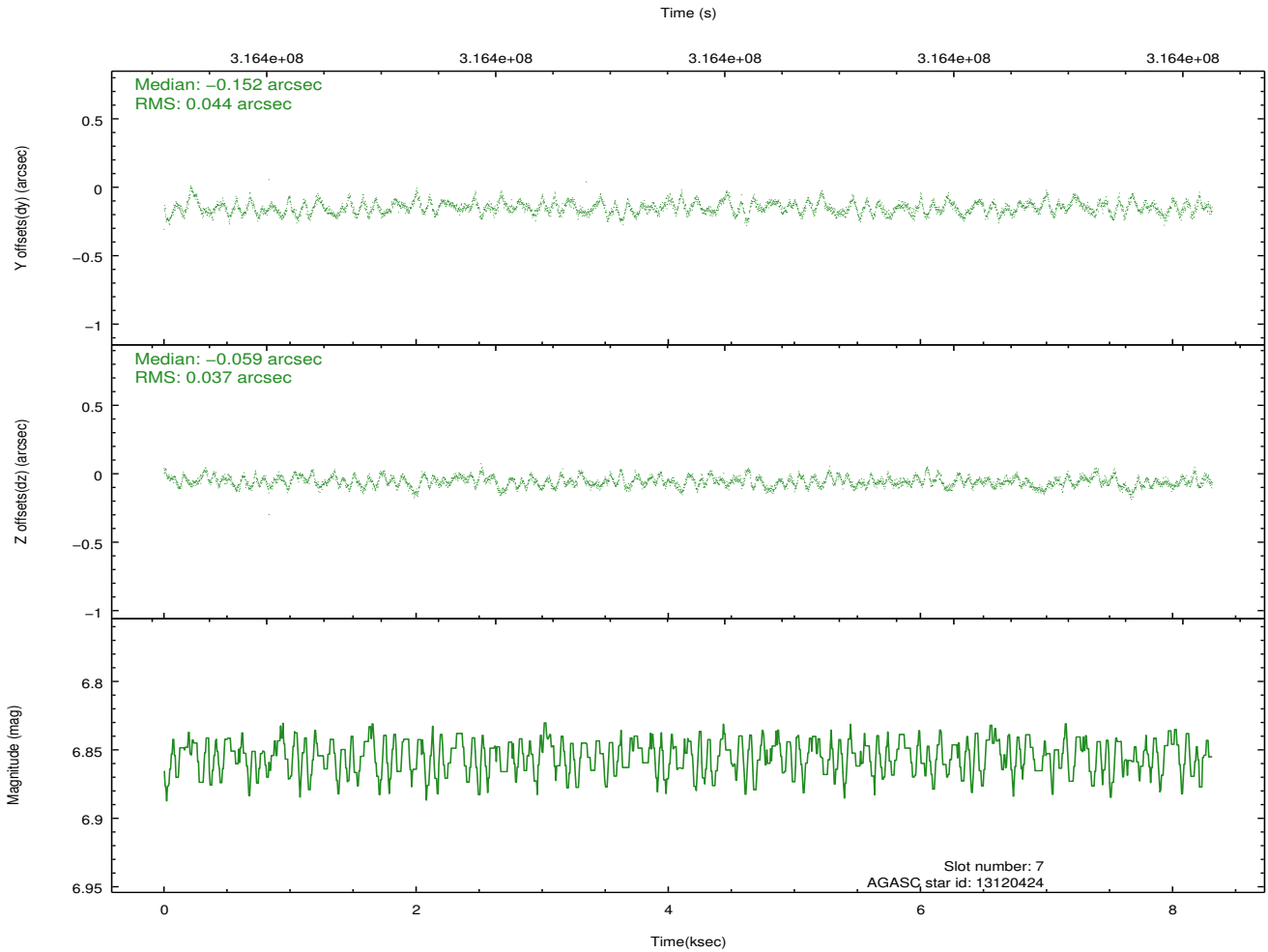
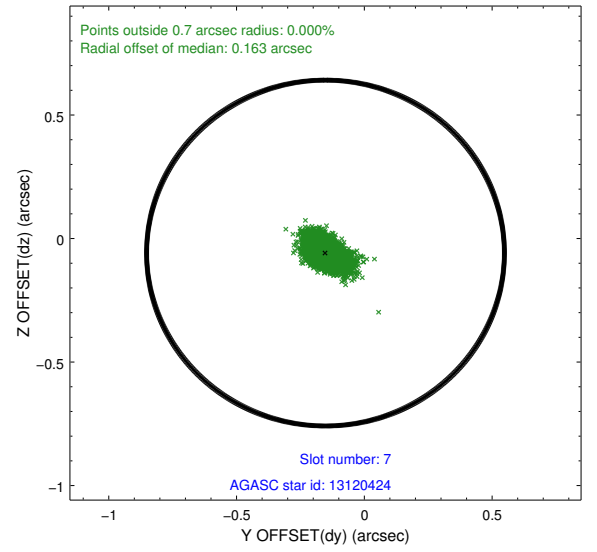
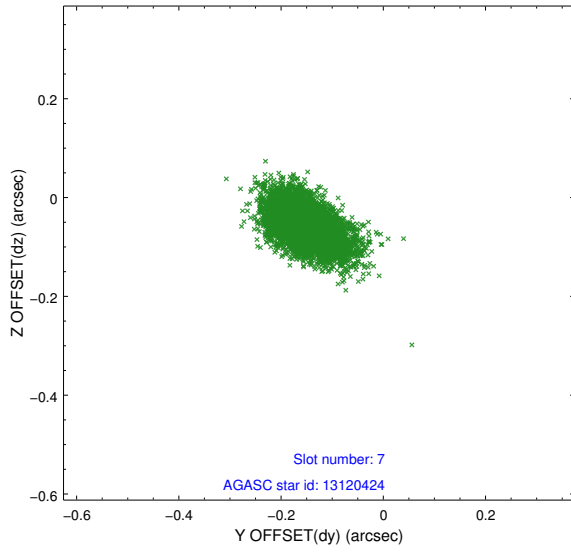


## 2.4.4 Slot 6



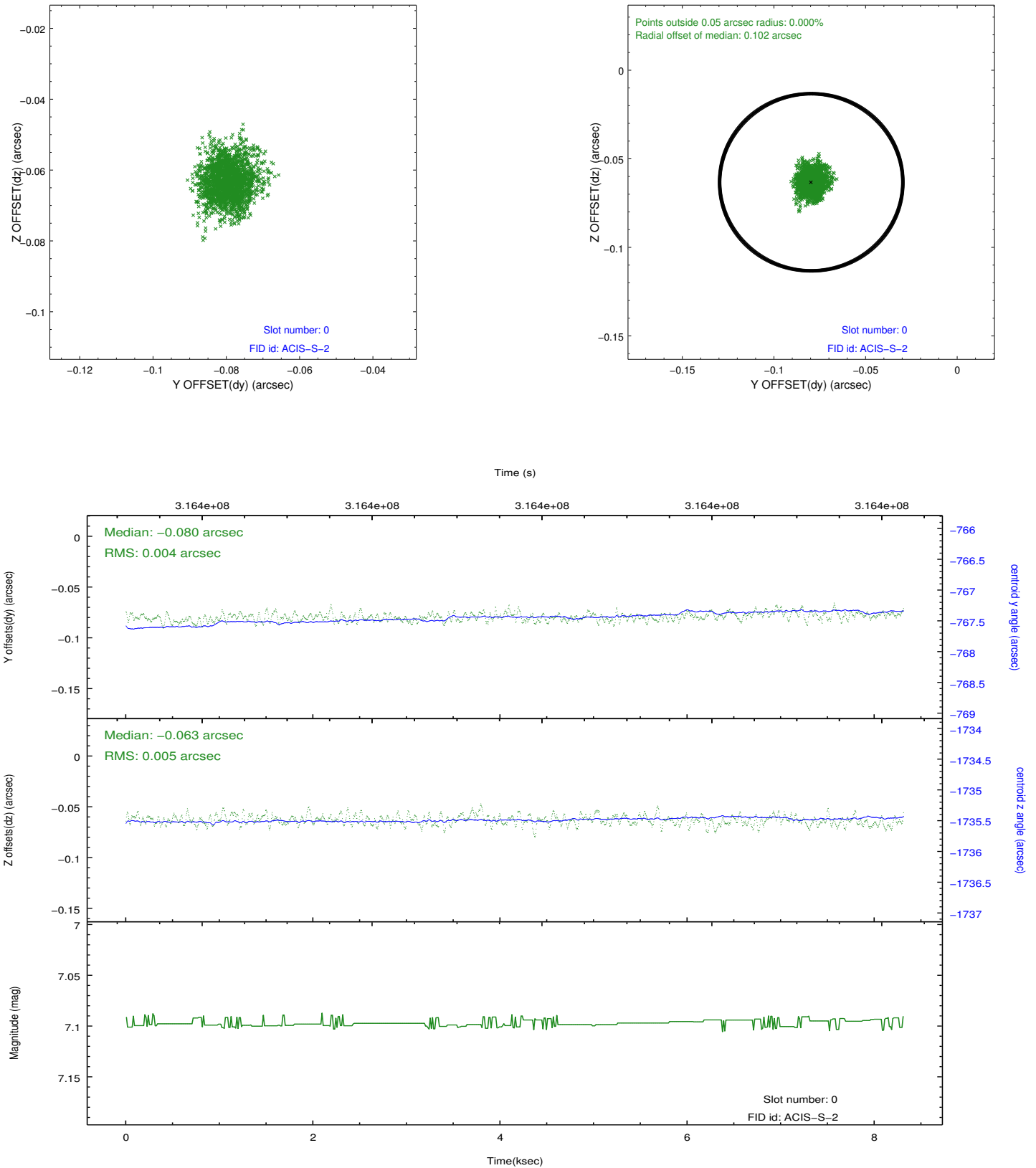


## 2.4.5 Slot 7

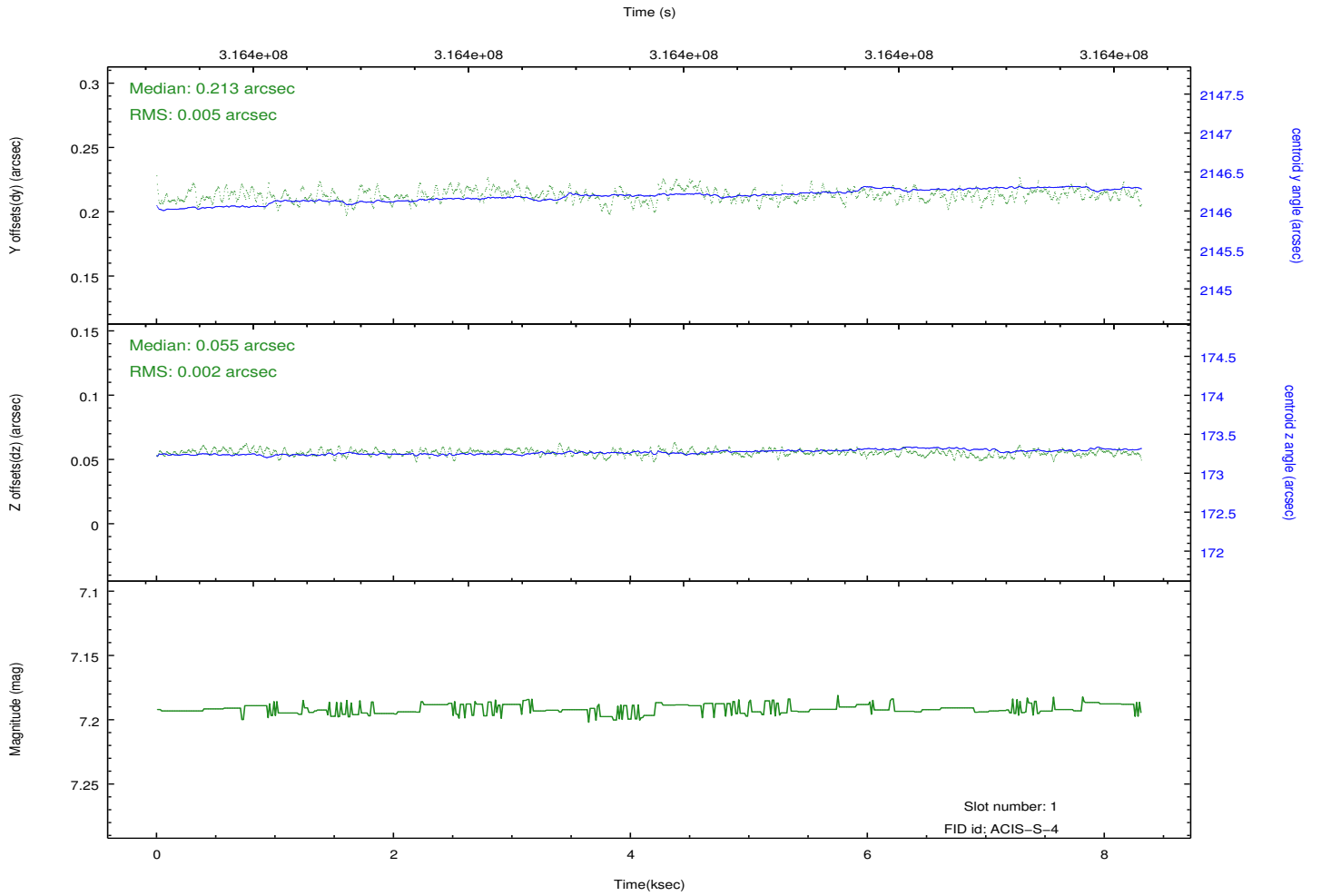
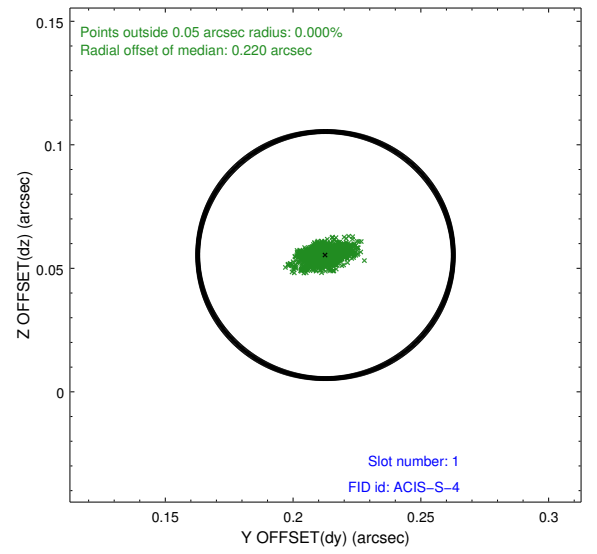
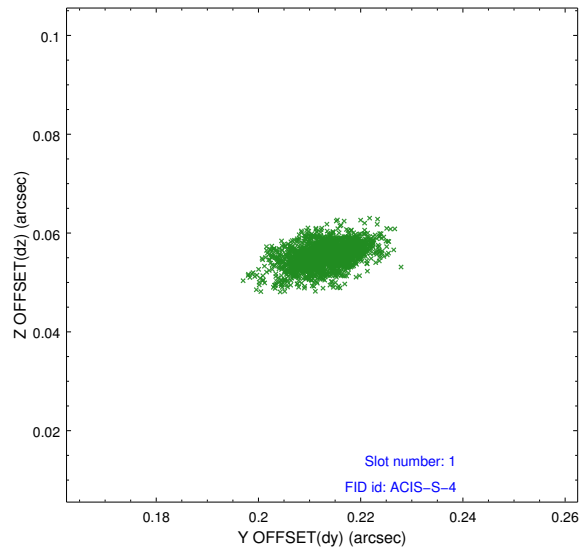


## 2.5 FID Slots

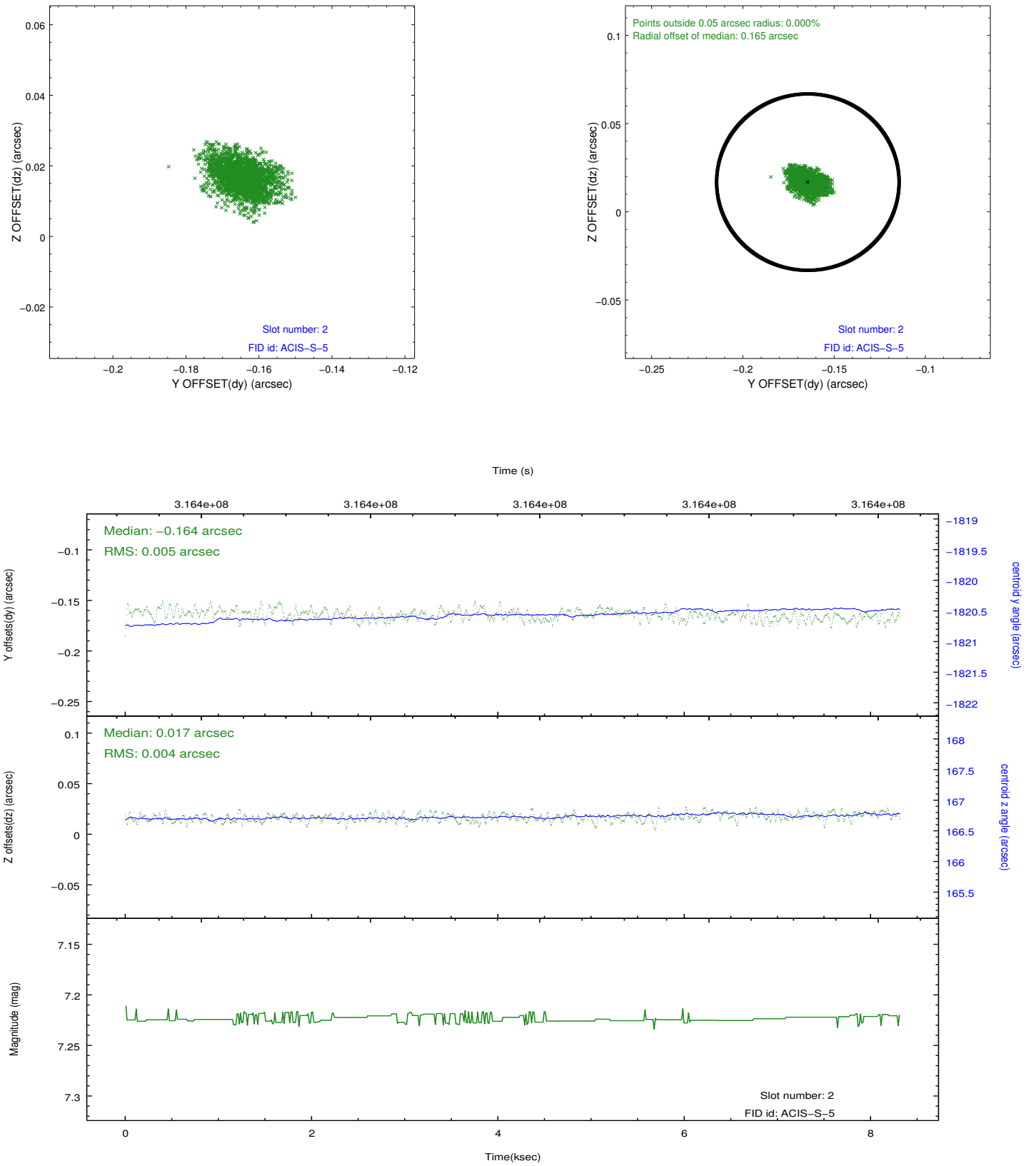
### 2.5.1 Slot 0



## 2.5.2 Slot 1



### 2.5.3 Slot 2



## A Summary

### A.1 Status

V&V Scientist	Joy Nichols
V&V Date (YYYY-MM-DD)	2012.05.09
V&V Edition	1
V&V Disposition and Status	OK
V&V Charge Time	8.03520006

### A.2 Comments