

V&V Reference Report

L2 ASCDS Version : 8.4.4

Observation 9294 - L2 Version 2
Chandra X-Ray Center

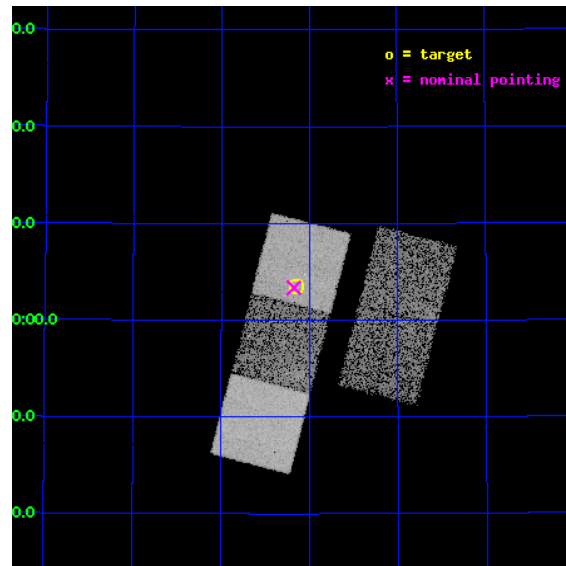
L2 Processing Date : May 7 2012

Contents

1	Front	2
2	OBI	3
2.1	OBI	3
2.1.1	Images	3
2.1.2	Bias	3
2.1.3	Parameters	4
2.1.4	Events	4
2.2	Compared Parameters	5
2.3	Aspect	6
2.4	Star Slots	9
2.4.1	Slot 3	9
2.4.2	Slot 4	10
2.4.3	Slot 5	11
2.4.4	Slot 6	12
2.4.5	Slot 7	13
2.5	FID Slots	14
2.5.1	Slot 0	14
2.5.2	Slot 1	15
2.5.3	Slot 2	16
A	Summary	17
A.1	Status	17
A.2	Comments	17

1 Front

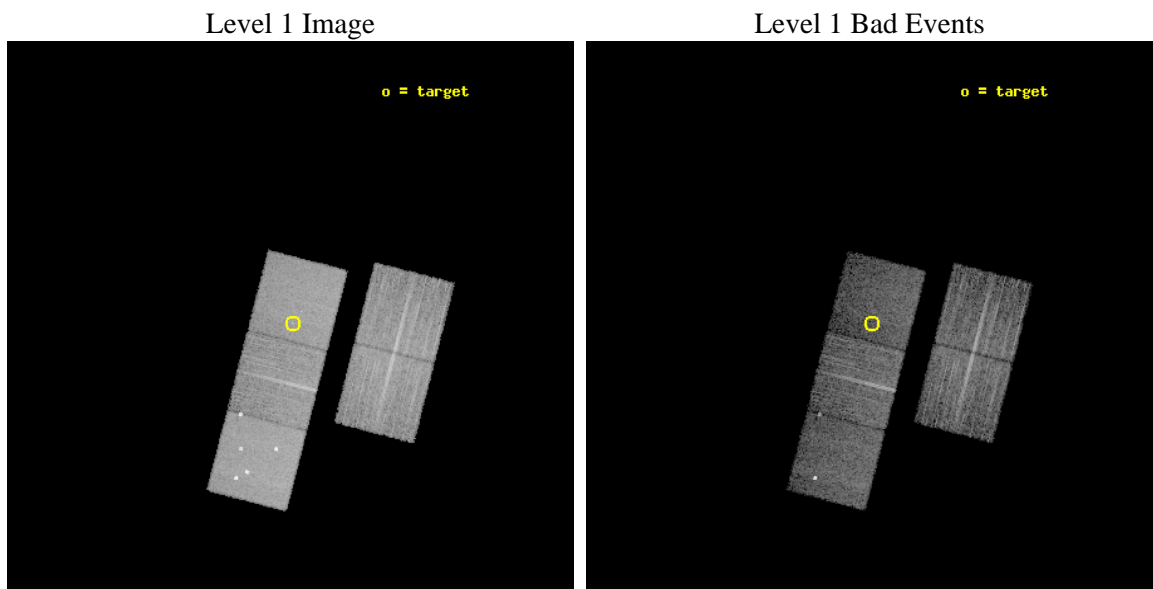
seq_num	701734	Sequence number
obs_id	9294	Observation id
title	Towards a Complete Sample: 3CR Extragalactic Radio Sources with $z < 0.3$	Proposal title
observer	Dr. Daniel Harris	Principal investigator
object	3C20	Source name
dtcycle	0	
cycle	P	events from which exps? Prim/Second/Both
ra_targ	10.788333	Observer's specified target RA [deg]
dec_targ	52.059306	Observer's specified target Dec [deg]
ra_nom	10.794144764266	Nominal RA [deg]
dec_nom	52.055936984187	Nominal Dec [deg]
roll_nom	284.43665447668	Nominal Roll [deg]
revision	2	Processing version of data
ontime	8035.2000617981	Sum of GTIs [s]
livetime	7930.2142575625	Livetime [s]
ontime2	8035.2000617981	Sum of GTIs [s]
ontime3	8035.2000617981	Sum of GTIs [s]
ontime5	8035.2000617981	Sum of GTIs [s]
ontime6	8032.0590615869	Sum of GTIs [s]
ontime7	8035.2000617981	Sum of GTIs [s]
l2events	92418	Number of level 2 events



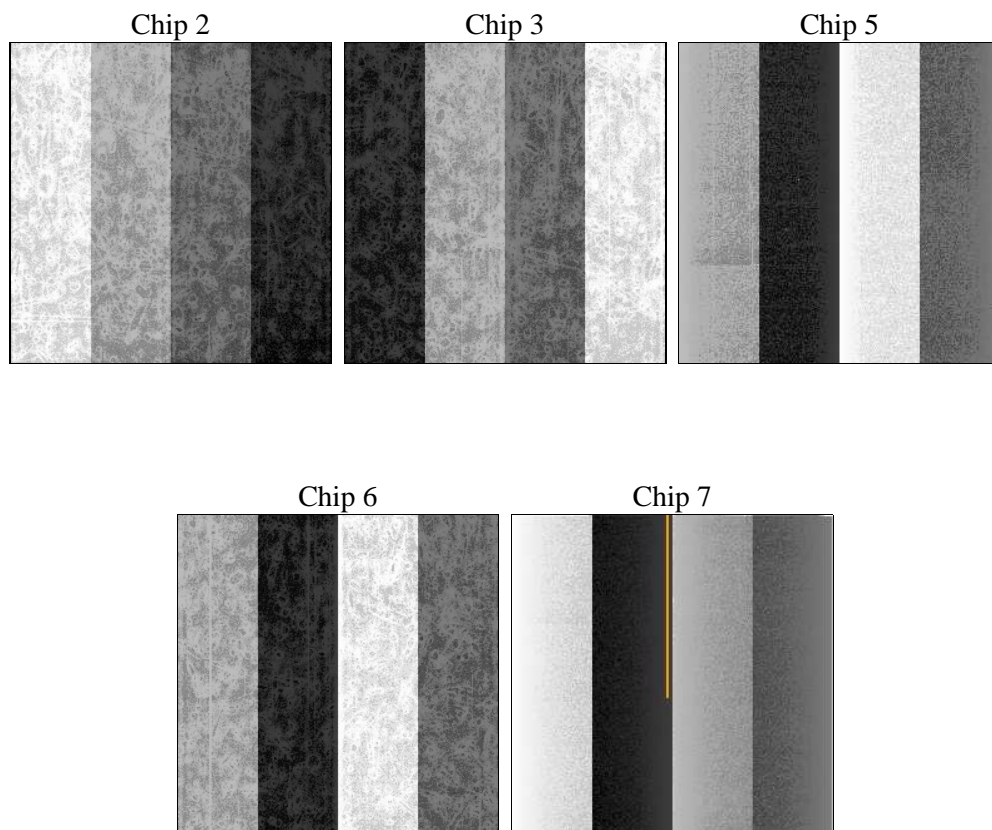
2 OBI

2.1 OBI

2.1.1 Images



2.1.2 Bias



2.1.3 Parameters

obi_num	0	Obi number	sched_exp_time	8000.801000	[s] Scheduled observation exposure time
ascdsver	8.4.4	Processing system revision	ontime	8035.2000617981	Sum of GTIs [s]
caldsver	4.4.9	 	ontime2	8035.2000617981	Sum of GTIs [s]
date	2012-05-07T14:14:31	Date and time of file creation	ontime3	8035.2000617981	Sum of GTIs [s]
revision	2	Processing version of data	ontime5	8035.2000617981	Sum of GTIs [s]
			ontime6	8032.0590615869	Sum of GTIs [s]
			ontime7	8035.2000617981	Sum of GTIs [s]
			l1events	373817	Number of level 1 events

2.1.4 Events

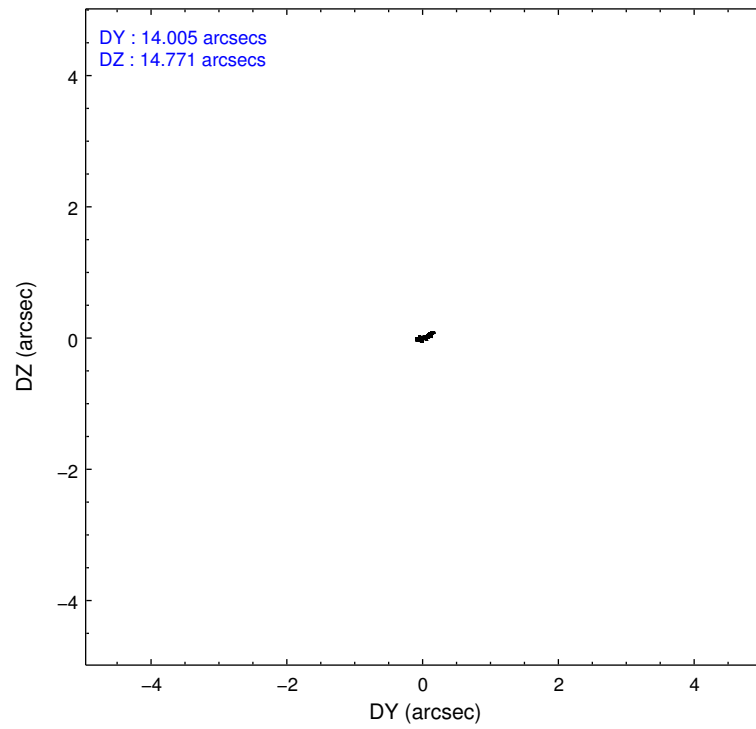
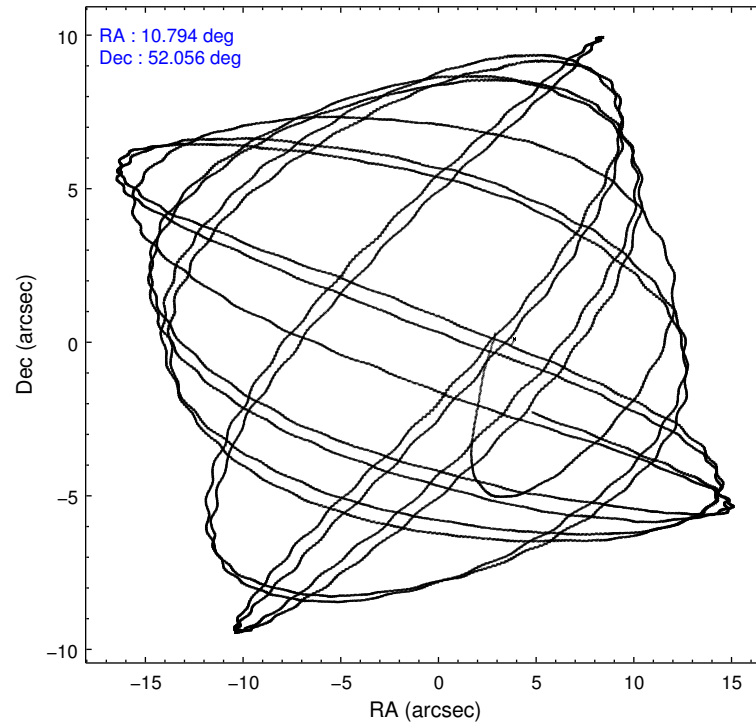
	ccd 2	ccd 3	ccd 5	ccd 6	ccd 7
level 1 events	68918	65068	100253	65536	74042
rejected events	62703	58872	48775	58098	40123
rejected %	90%	90%	48%	88%	54%

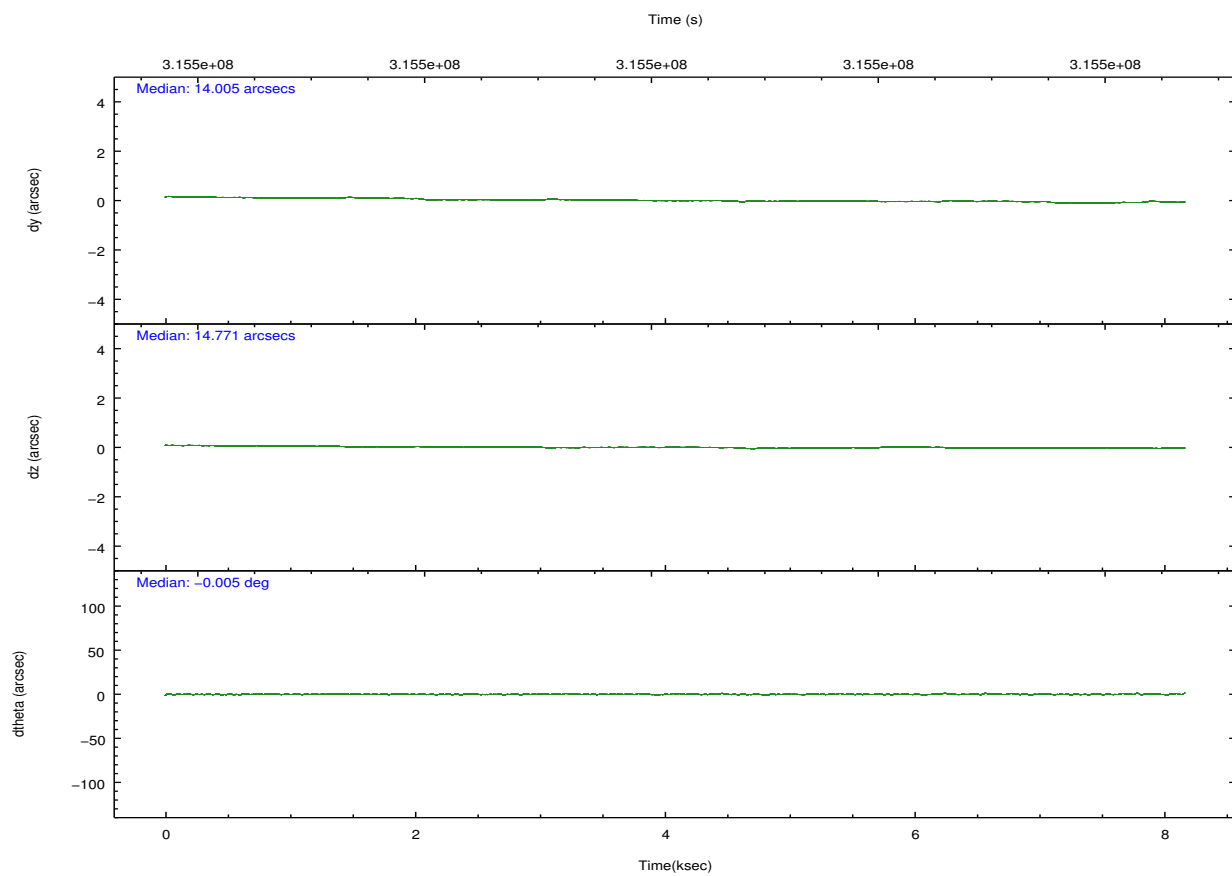
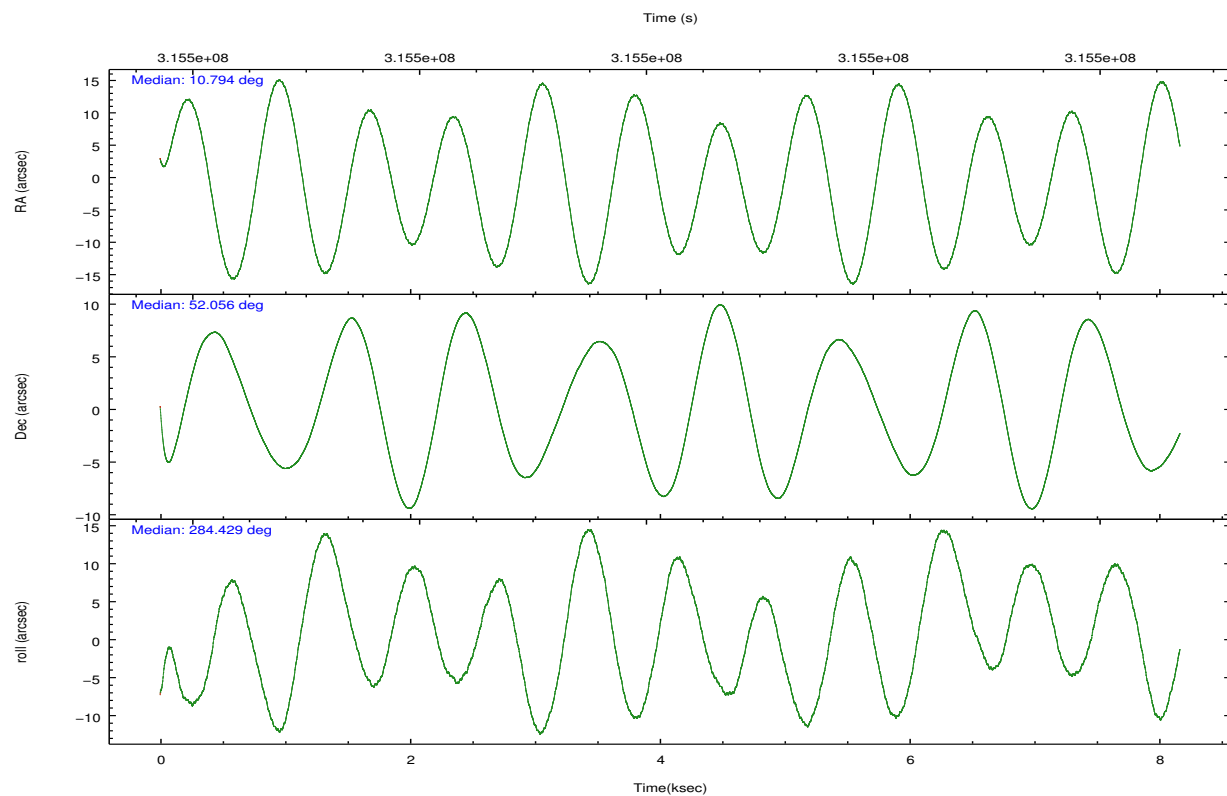
	ccd 2	ccd 3	ccd 5	ccd 6	ccd 7
grade 0 events	2210	2183	9468	2866	3267
	3%	3%	9%	4%	4%
grade 1 events	33	42	355	44	94
	0%	0%	0%	0%	0%
grade 2 events	1477	1344	14330	1521	6812
	2%	2%	14%	2%	9%
grade 3 events	671	733	1988	755	2989
	0%	1%	1%	1%	4%
grade 4 events	667	709	1861	831	2949
	0%	1%	1%	1%	3%
grade 5 events	2128	2683	7822	2662	7814
	3%	4%	7%	4%	10%
grade 6 events	1193	1230	23857	1469	17915
	1%	1%	23%	2%	24%
grade 7 events	60539	56144	40572	55388	32202
	87%	86%	40%	84%	43%

2.2 Compared Parameters

Parameter	Planned	Actual	Parameter	Planned	Actual
Instrument	ACIS	ACIS	Obspar format version number	7	7
Detector	ACIS-23567	ACIS-23567	Obspar file type	PREDICTED	ACTUAL
Grating	NONE	NONE	Obspar update status	NONE	UPDATED
Data mode	VFAINT	VFAINT	CCD I0 on	N	N
Observation mode	POINTING	POINTING	CCD I1 on	N	N
[deg] Pointing RA	10.762436	10.7941447642657	CCD I2 on	Y	Y
[deg] Pointing Dec	52.075203	52.05593698418735	CCD I3 on	Y	Y
[deg] Pointing Roll	284.305050	284.4366544766835	CCD S0 on	N	N
[mm] SIM focus pos	-0.684267	-0.6828225247311905	CCD S1 on	O1	Y
[mm] SIM defocus	0	0.001444936568705701	CCD S2 on	Y	Y
[mm] SIM translation stage pos	-190.132523	-190.1425803651734	CCD S3 on	Y	Y
[mm] SIM translation stage offset	0	0.01005778216563158	CCD S4 on	N	N
[s] Observation start time (MET)	315496288.184000	315495357.88857	CCD S5 on	N	N
Observation start date	2007-12-31T13:50:23	2007-12-31T13:35:57	Number of optional ACIS chips dropped	0	0
[s] Observation end time (MET)	315504289.184000	315504514.72651	On-chip summing requested	N	N
Observation end date	2007-12-31T16:03:44	2007-12-31T16:08:34	Subarray requested	NONE	NONE
Read mode	TIMED	TIMED	Alternating exposures requested	N	N
			[s] Primary exposure time	0.000000	3.1

2.3 Aspect



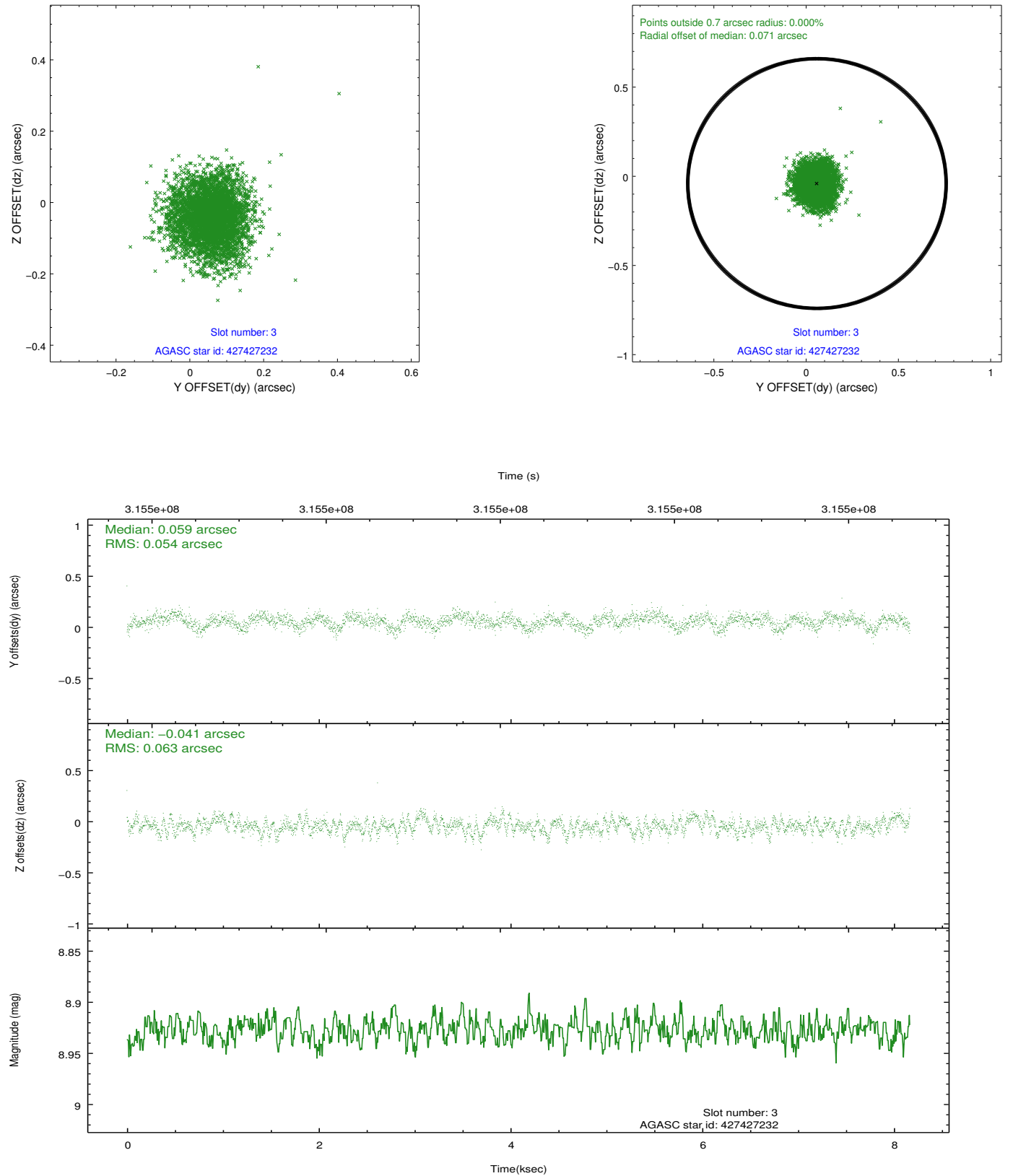


Slot Statistics

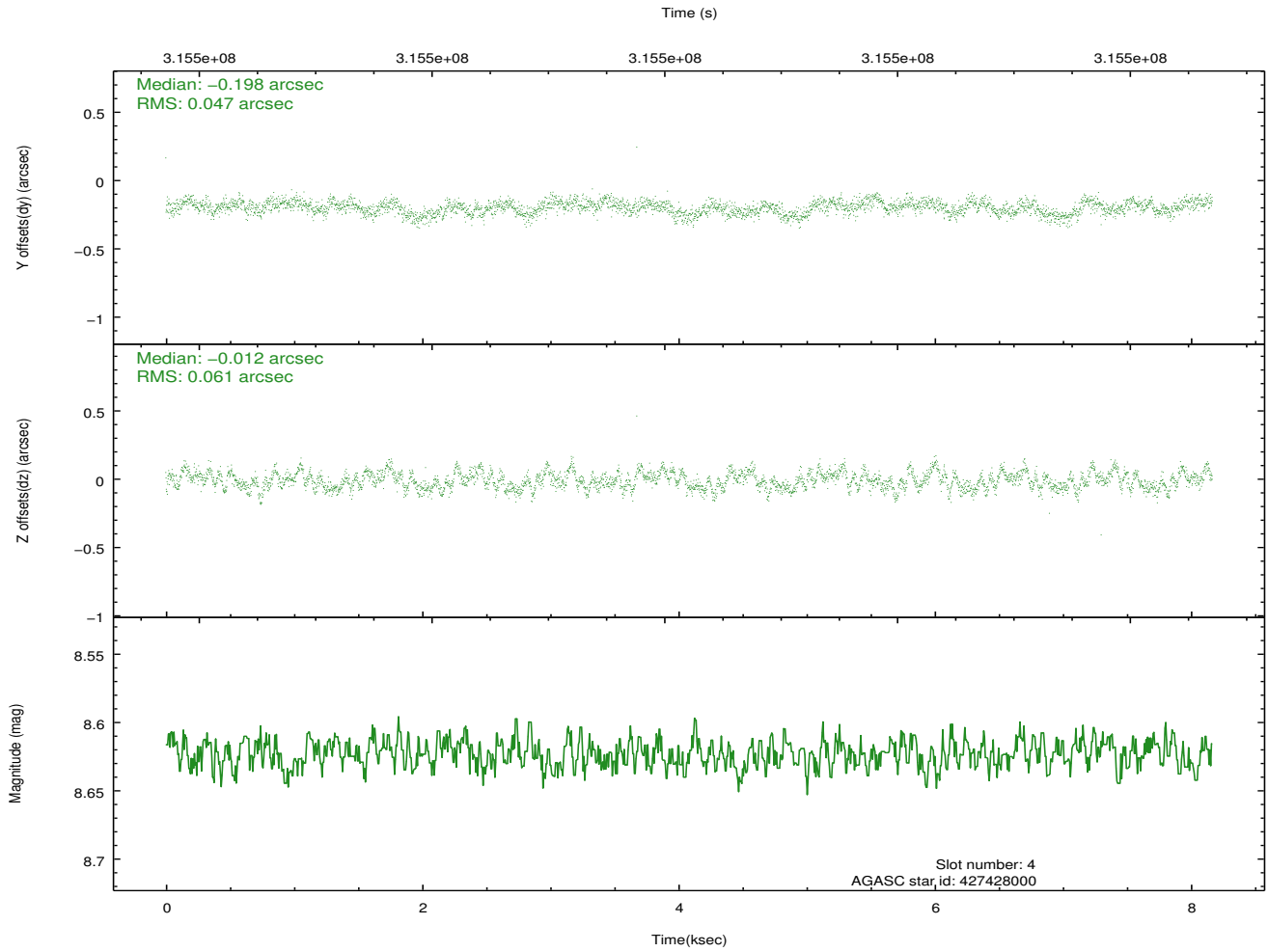
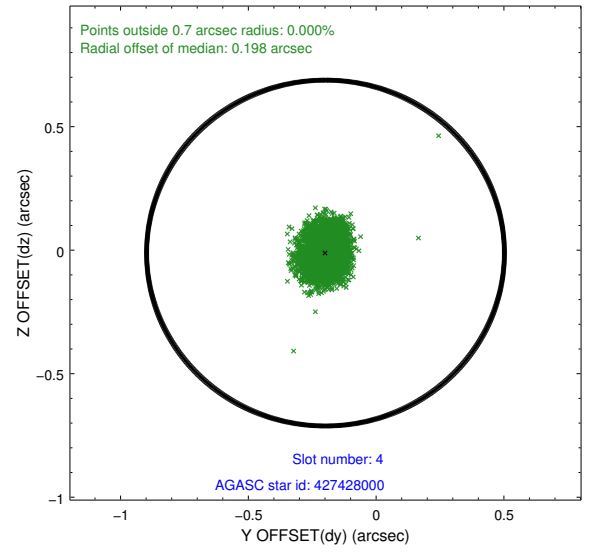
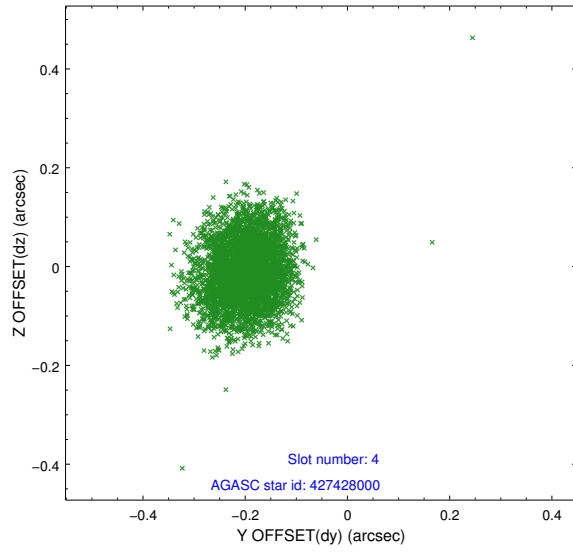
slot	status	id	mag	n_pts	med_dy	med_dz	dr1	dr2	ra	dec	mean_y	mean_z
0	FID	ACIS-S-2	7.10	1993	-0.076	-0.040	0.007	0.012	0.000000	0.000000	-767.02	-1736.14
1	FID	ACIS-S-4	7.20	1993	0.201	0.048	0.005	0.011	0.000000	0.000000	2146.20	171.74
2	FID	ACIS-S-5	7.22	1993	-0.156	0.001	0.007	0.012	0.000000	0.000000	-1819.08	166.11
3	GUIDE	427427232	8.93	3983	0.059	-0.041	0.089	0.141	10.432492	52.145520	-426.63	-643.46
4	GUIDE	427428000	8.62	3983	-0.198	-0.012	0.081	0.129	10.554624	52.381196	-1180.93	-170.50
5	GUIDE	427429560	9.76	3982	0.175	0.096	0.159	0.252	10.454585	52.097198	-246.16	-639.80
6	GUIDE	427439112	9.74	3981	-0.004	-0.065	0.134	0.223	10.721048	51.500002	1983.89	-601.75
7	GUIDE	479069600	9.81	3964	-0.026	0.025	0.106	0.179	11.364215	52.505439	-1179.85	1662.34

2.4 Star Slots

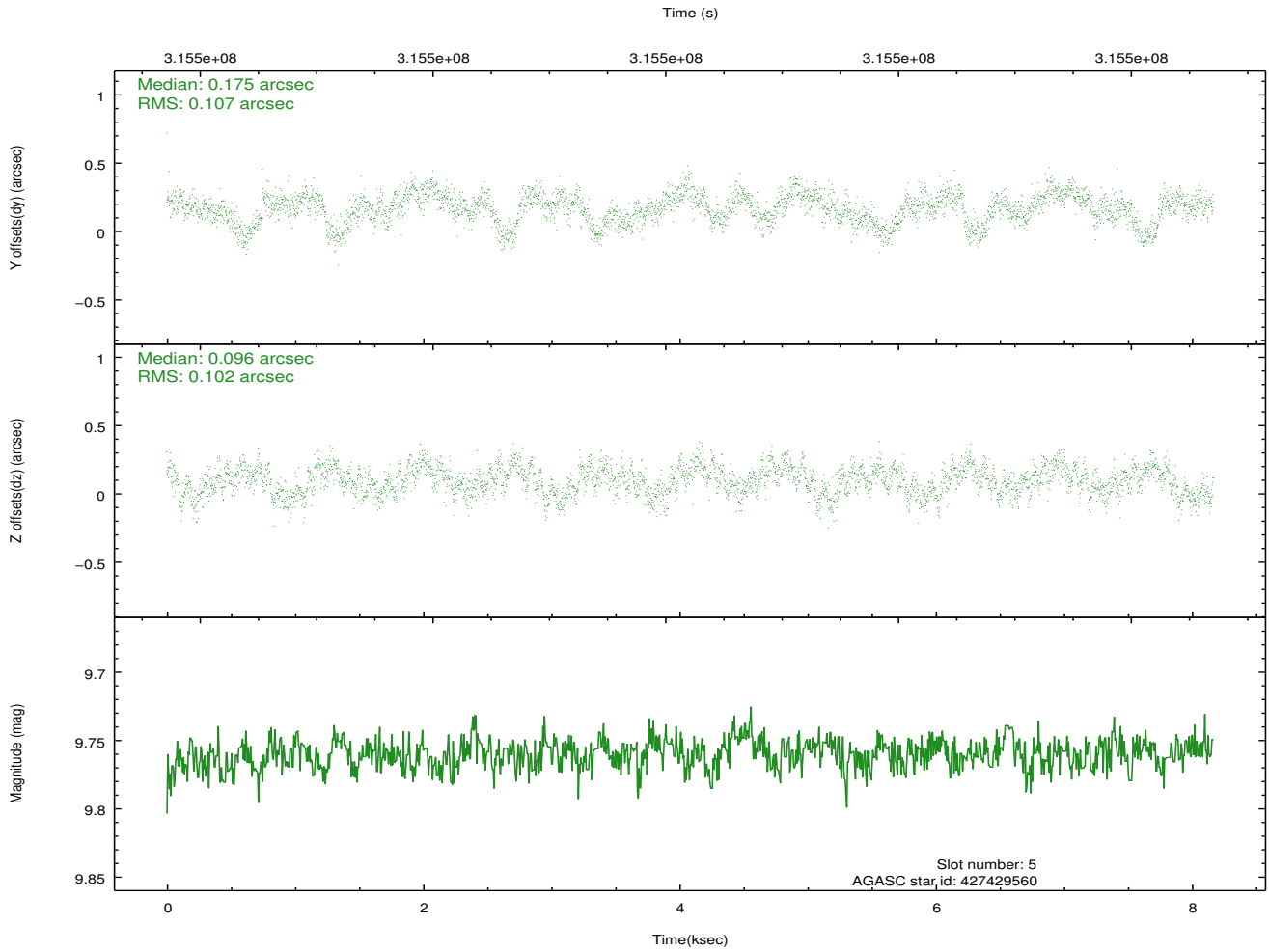
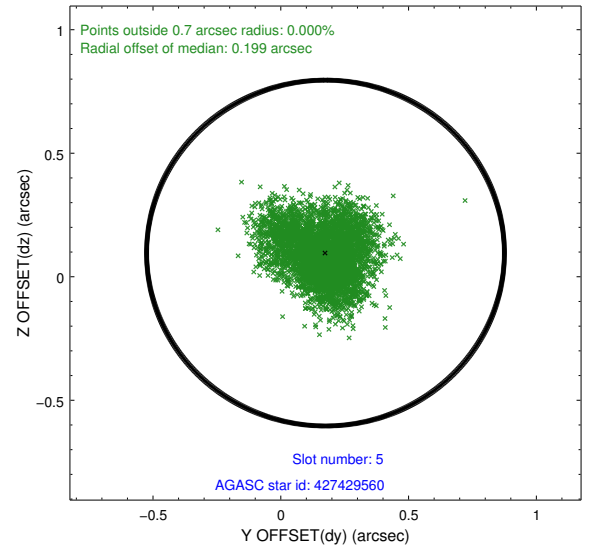
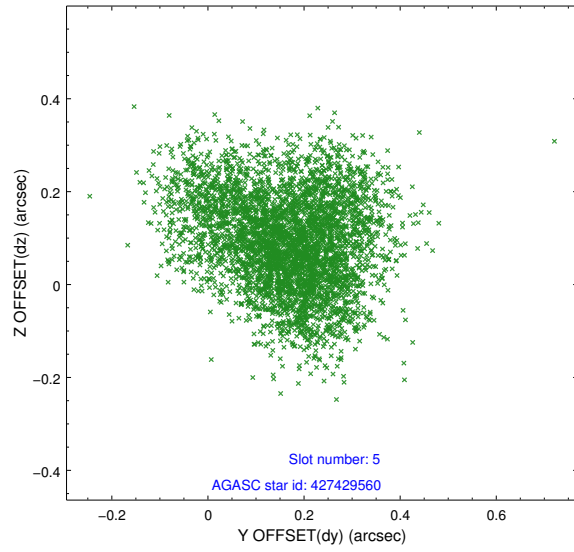
2.4.1 Slot 3



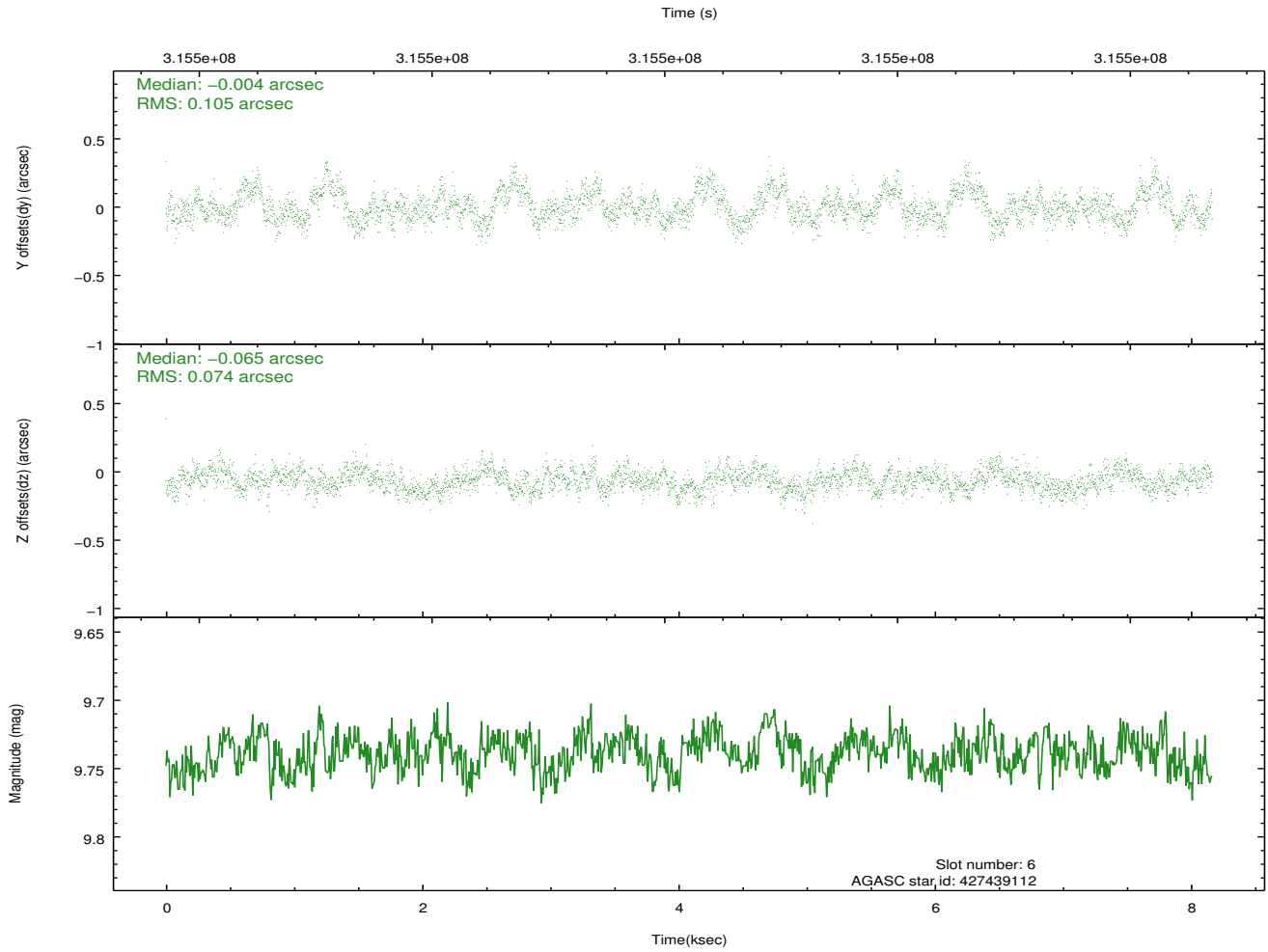
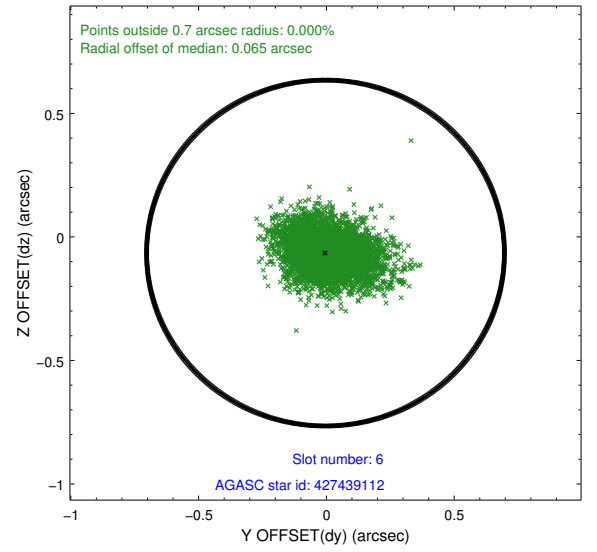
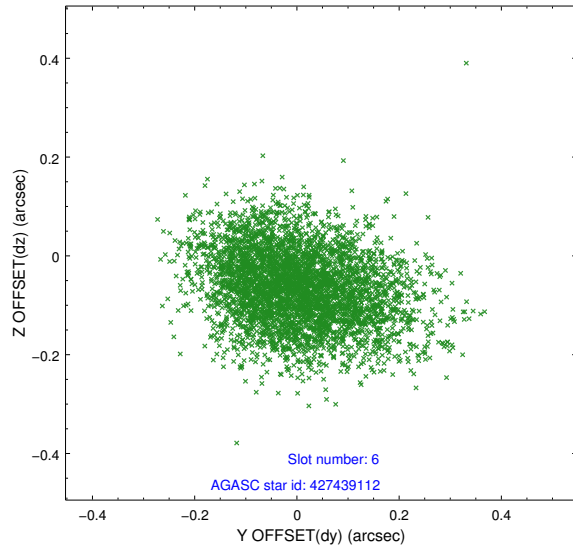
2.4.2 Slot 4



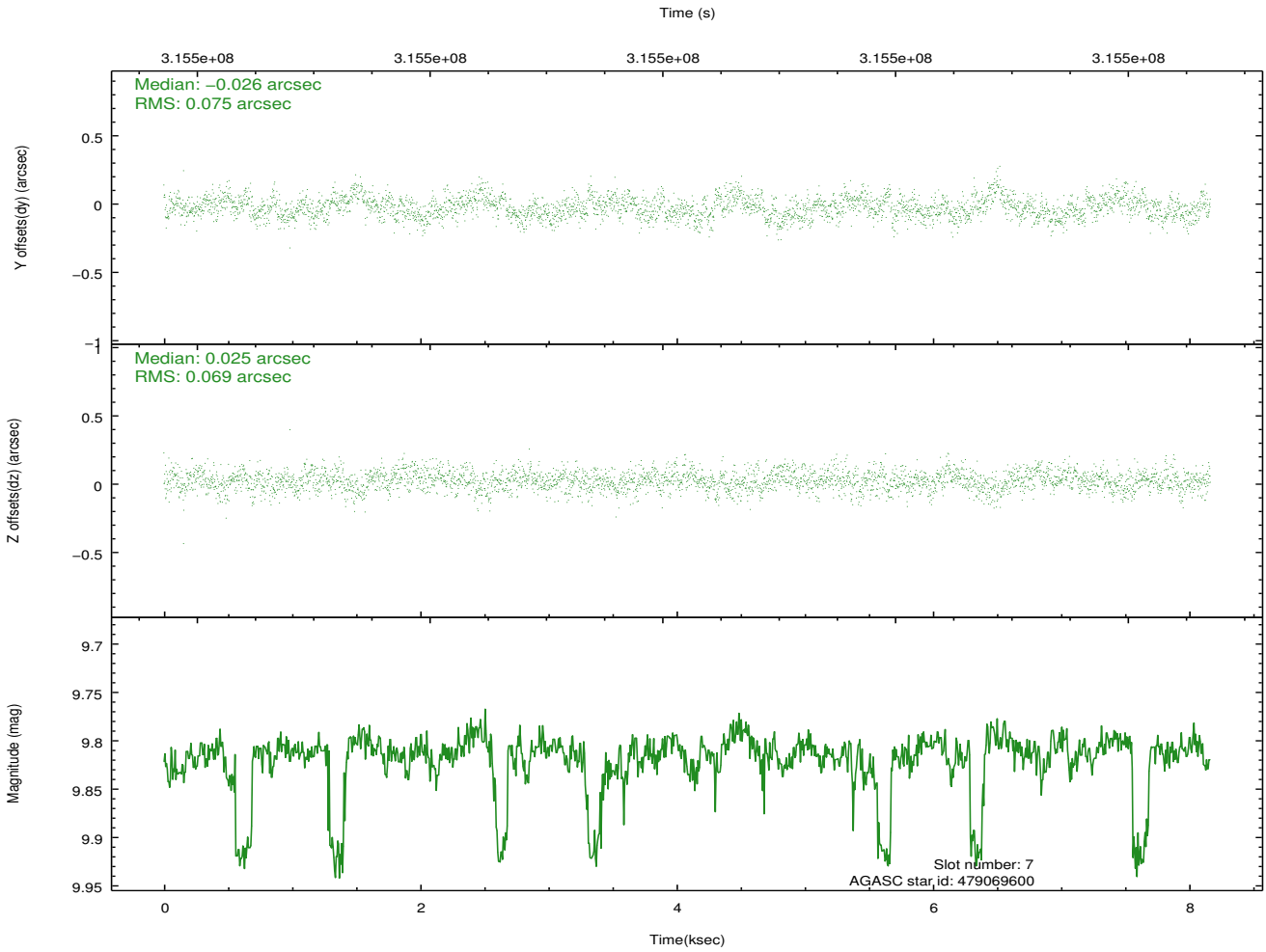
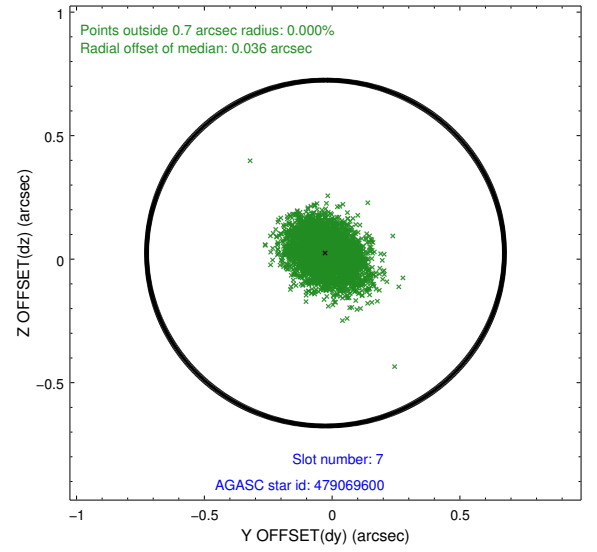
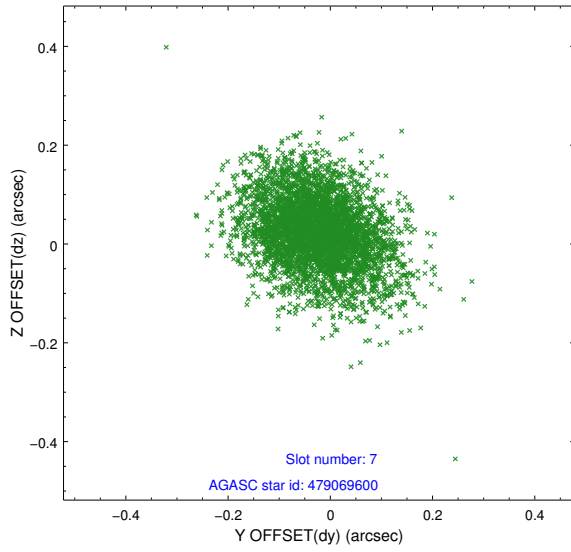
2.4.3 Slot 5



2.4.4 Slot 6

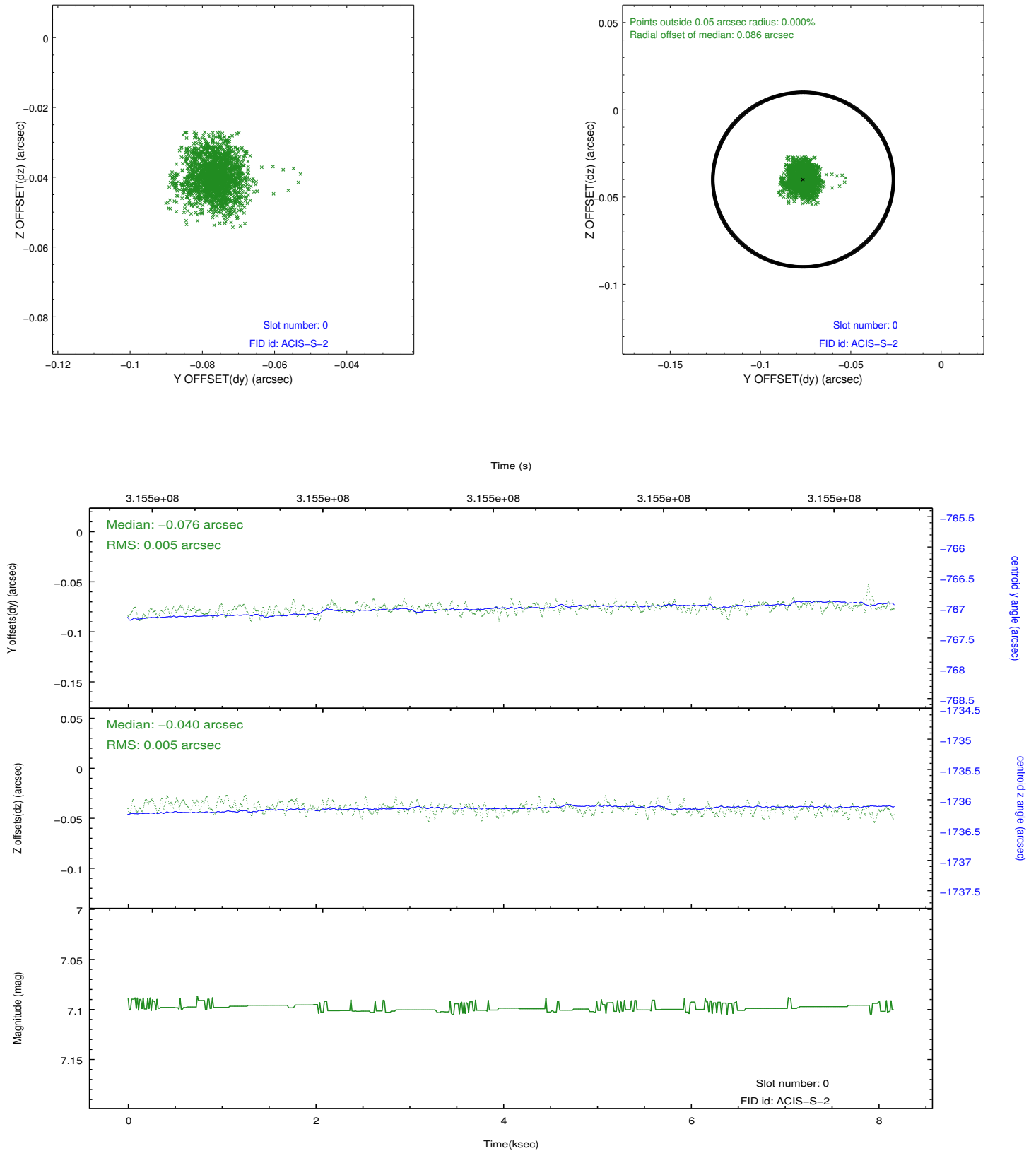


2.4.5 Slot 7

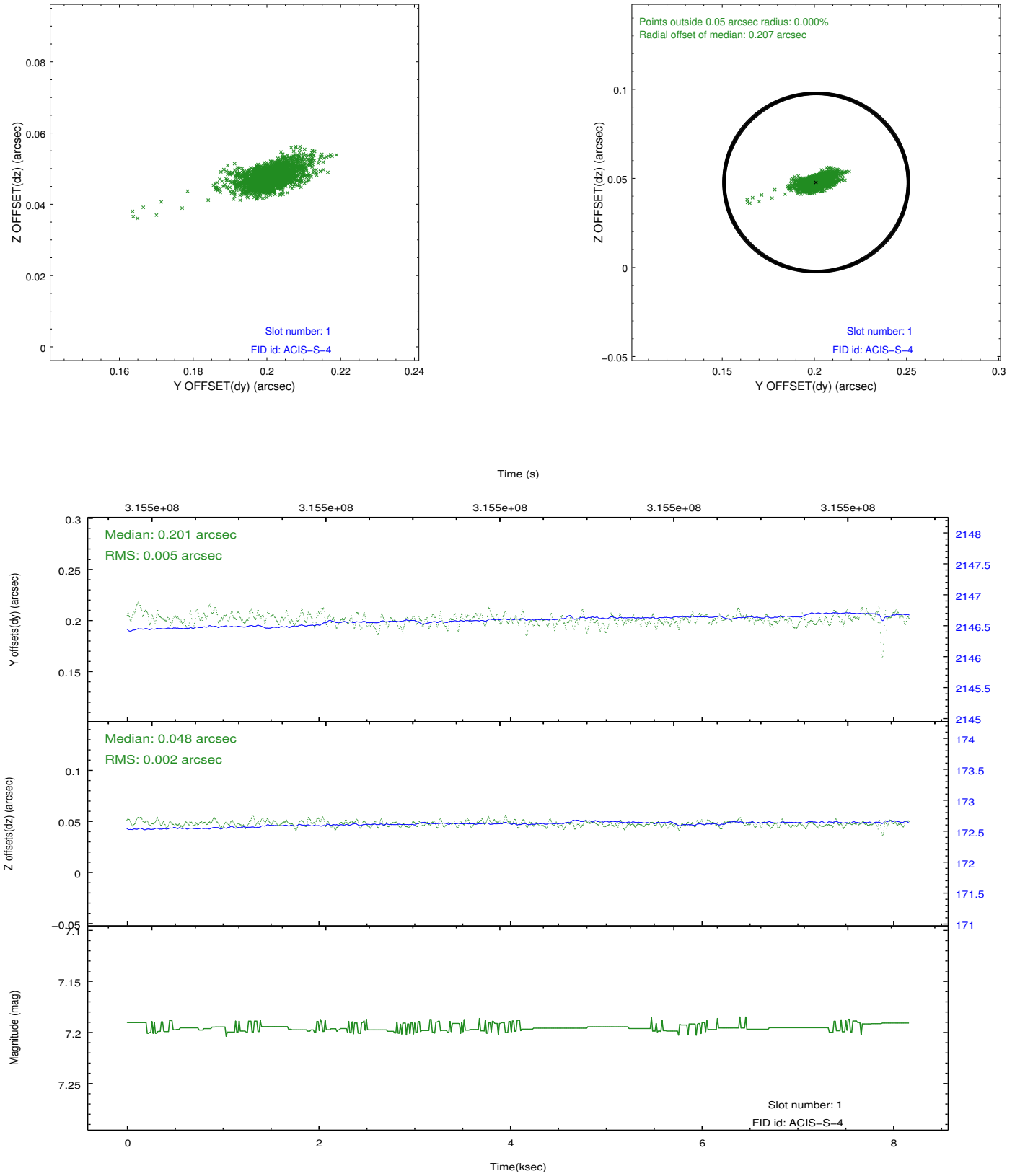


2.5 FID Slots

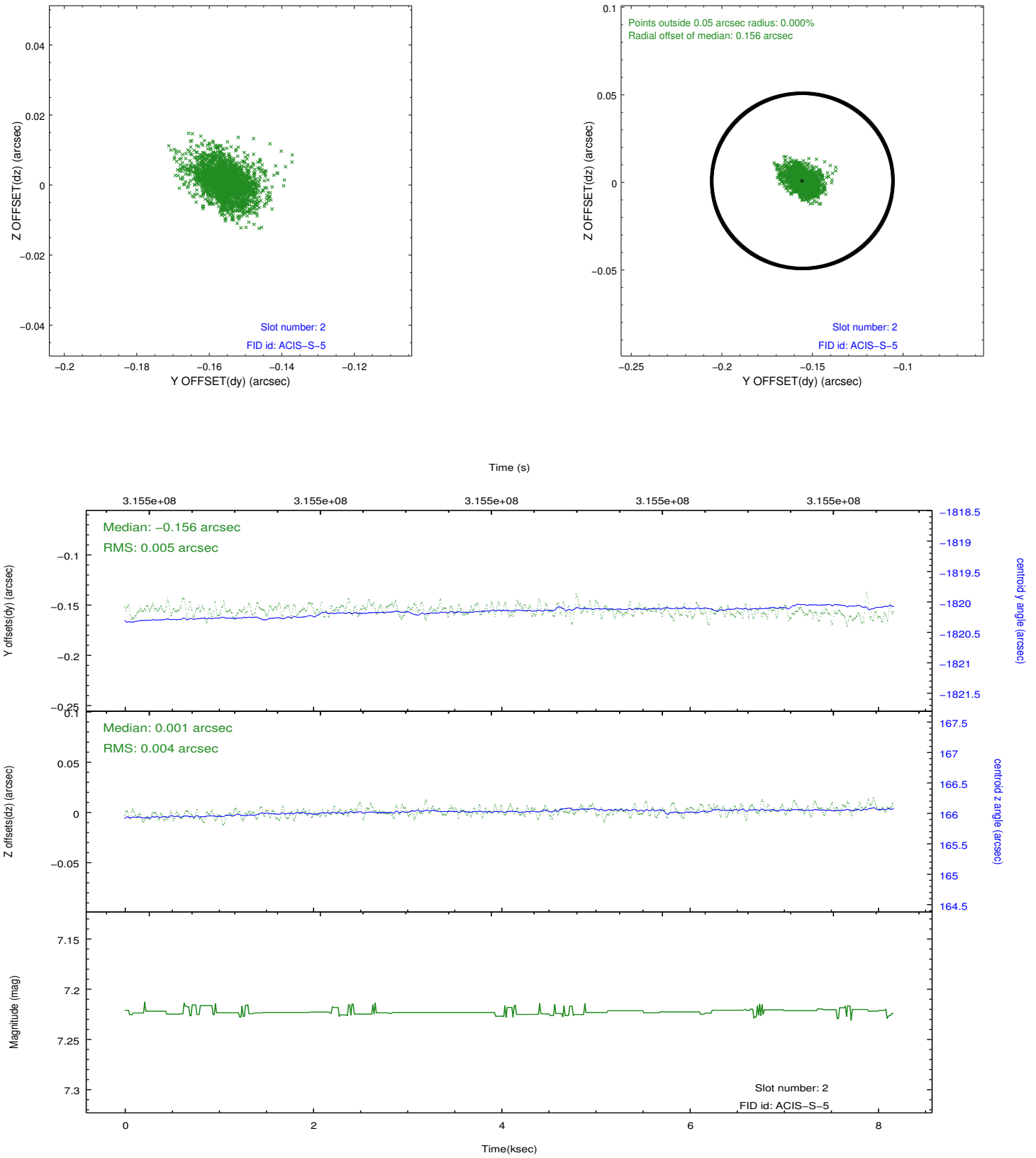
2.5.1 Slot 0



2.5.2 Slot 1



2.5.3 Slot 2



A Summary

A.1 Status

V&V Scientist	Beth Sundheim
V&V Date (YYYY-MM-DD)	2012.05.08
V&V Edition	1
V&V Disposition and Status	OK
V&V Charge Time	8.03520006

A.2 Comments