

# V&V Reference Report

## L2 ASCDS Version : 8.4.4

Observation 9285 - L2 Version 2  
Chandra X-Ray Center

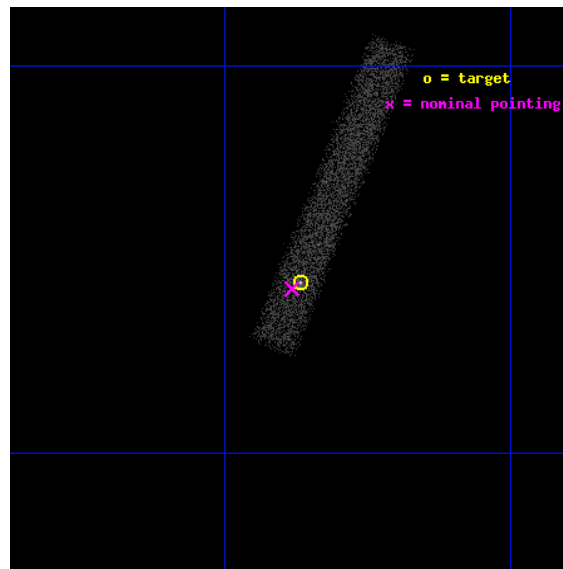
L2 Processing Date : May 5 2012

## Contents

<b>1</b>	<b>Front</b>	<b>2</b>
<b>2</b>	<b>OBI</b>	<b>3</b>
2.1	OBI . . . . .	3
2.1.1	Images . . . . .	3
2.1.2	Bias . . . . .	3
2.1.3	Parameters . . . . .	4
2.1.4	Events . . . . .	4
2.2	Compared Parameters . . . . .	5
2.3	Aspect . . . . .	6
2.4	Star Slots . . . . .	9
2.4.1	Slot 3 . . . . .	9
2.4.2	Slot 4 . . . . .	10
2.4.3	Slot 5 . . . . .	11
2.4.4	Slot 6 . . . . .	12
2.4.5	Slot 7 . . . . .	13
2.5	FID Slots . . . . .	14
2.5.1	Slot 0 . . . . .	14
2.5.2	Slot 1 . . . . .	15
2.5.3	Slot 2 . . . . .	16
<b>A</b>	<b>Summary</b>	<b>17</b>
A.1	Status . . . . .	17
A.2	Comments . . . . .	17

# 1 Front

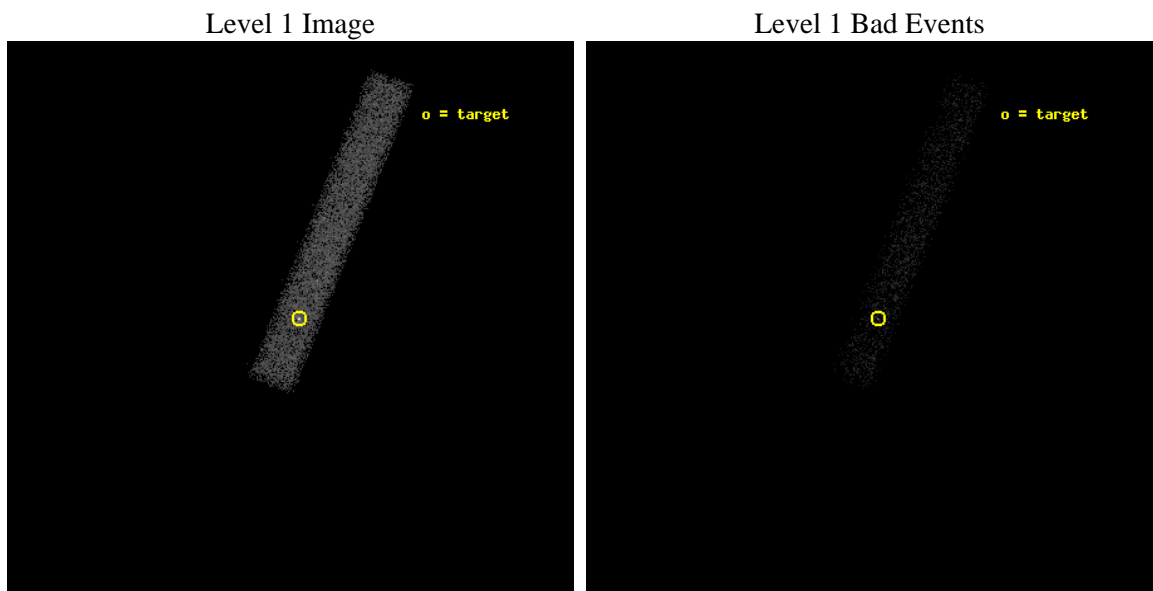
seq_num	701725	Sequence number
obs_id	9285	Observation id
title	Surveying X-ray Jets in Superluminal Blazars	Proposal title
observer	Dr. Matthew Lister	Principal investigator
object	2216-038	Source name
dtcycle	0	&#160
cycle	P	events from which exps? Prim/Second/Both
ra_targ	334.716667	Observer's specified target RA [deg]
dec_targ	-3.593333	Observer's specified target Dec [deg]
ra_nom	334.72061902947	Nominal RA [deg]
dec_nom	-3.5962133345389	Nominal Dec [deg]
roll_nom	291.88118005255	Nominal Roll [deg]
revision	2	Processing version of data
ontime	10156.399394631	Sum of GTIs [s]
livetime	9211.3181522142	Livetime [s]
ontime7	10156.399394631	Sum of GTIs [s]
l2events	9773	Number of level 2 events



## 2 OBI

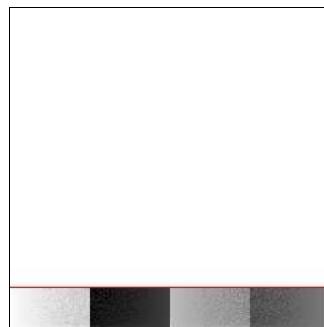
### 2.1 OBI

#### 2.1.1 Images



#### 2.1.2 Bias

Chip 7



### 2.1.3 Parameters

obi_num	0	Obi number	sched_exp_time	10000.000000	[s] Scheduled observation exposure time
ascdsver	8.4.4	Processing system revision	ontime	10156.399394631	Sum of GTIs [s]
caldsver	4.4.9	&#160	ontime7	10156.399394631	Sum of GTIs [s]
date	2012-05-05T20:51:29	Date and time of file creation	l1events	20783	Number of level 1 events
revision	2	Processing version of data			

### 2.1.4 Events

	<b>ccd 7</b>
level 1 events	20783
rejected events	10742
rejected %	<b>51%</b>

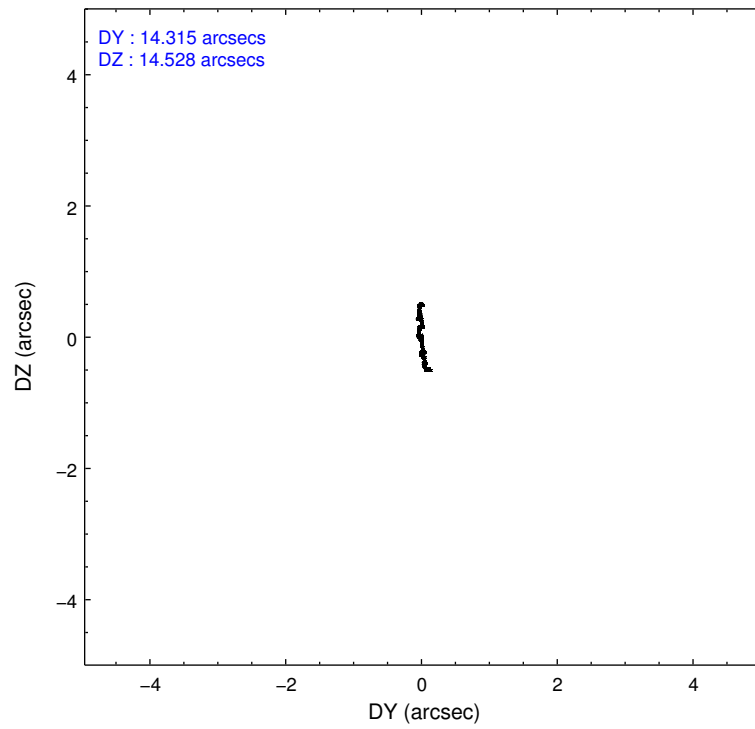
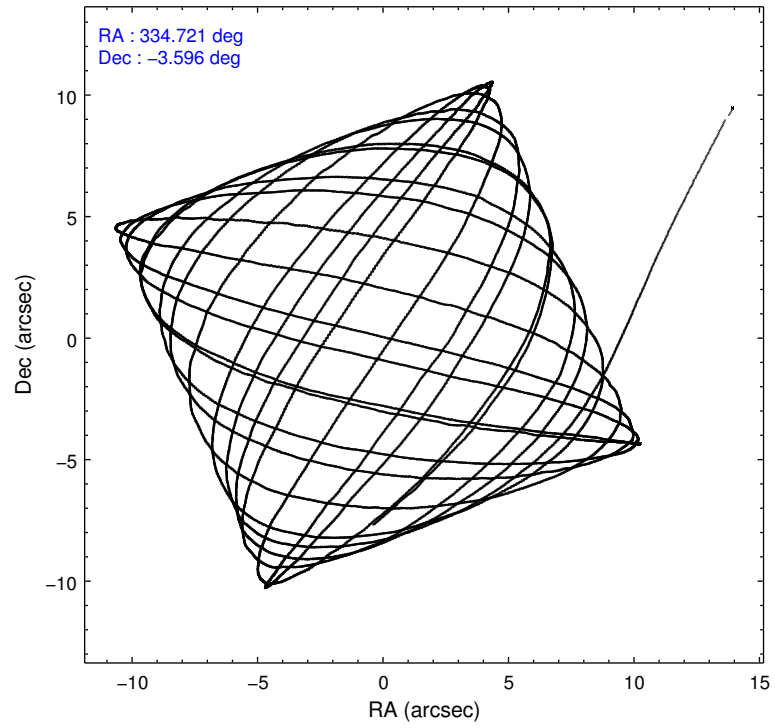
	<b>ccd 7</b>
grade 0 events	1281
	6%
grade 1 events	24
	0%
grade 2 events	2127
	10%
grade 3 events	1335
	6%
grade 4 events	1243
	5%
grade 5 events	1648
	7%
grade 6 events	4671
	22%
grade 7 events	8454
	40%

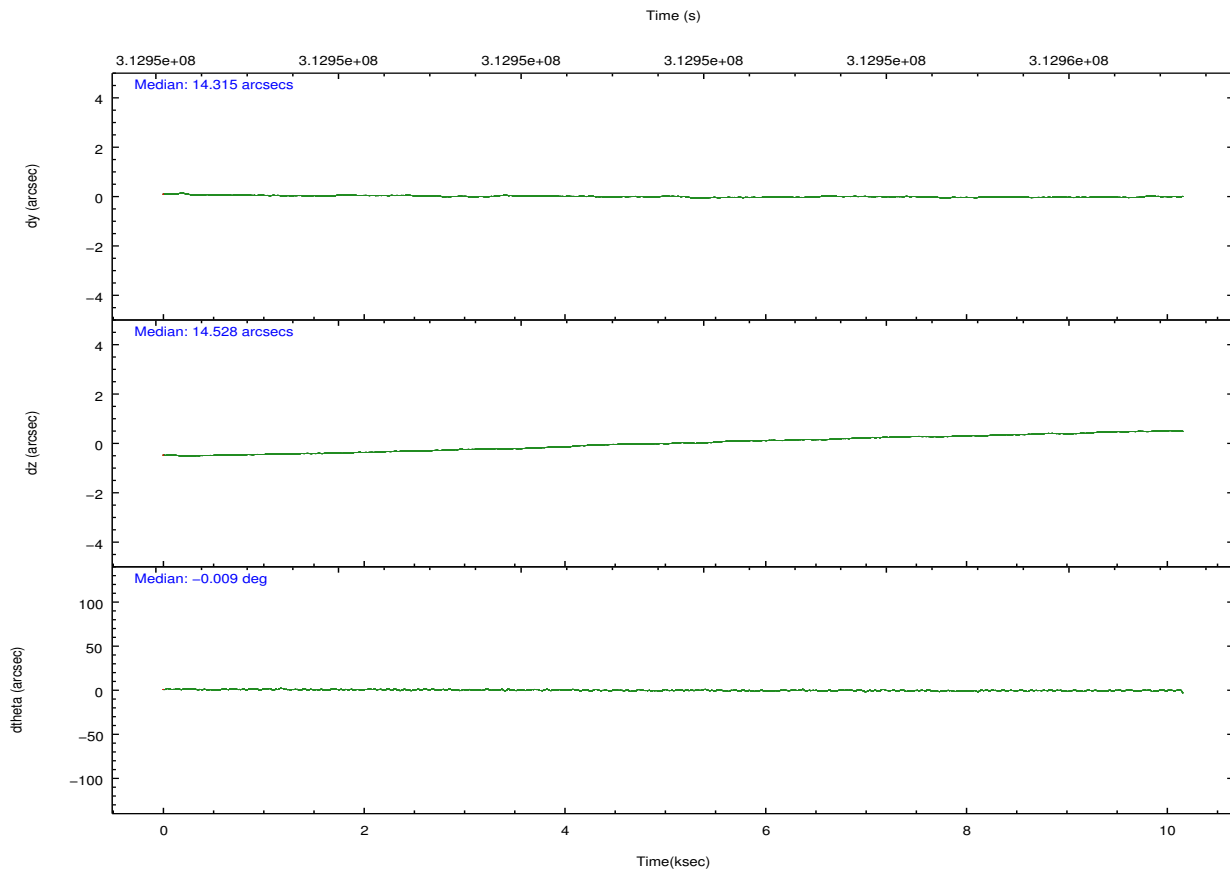
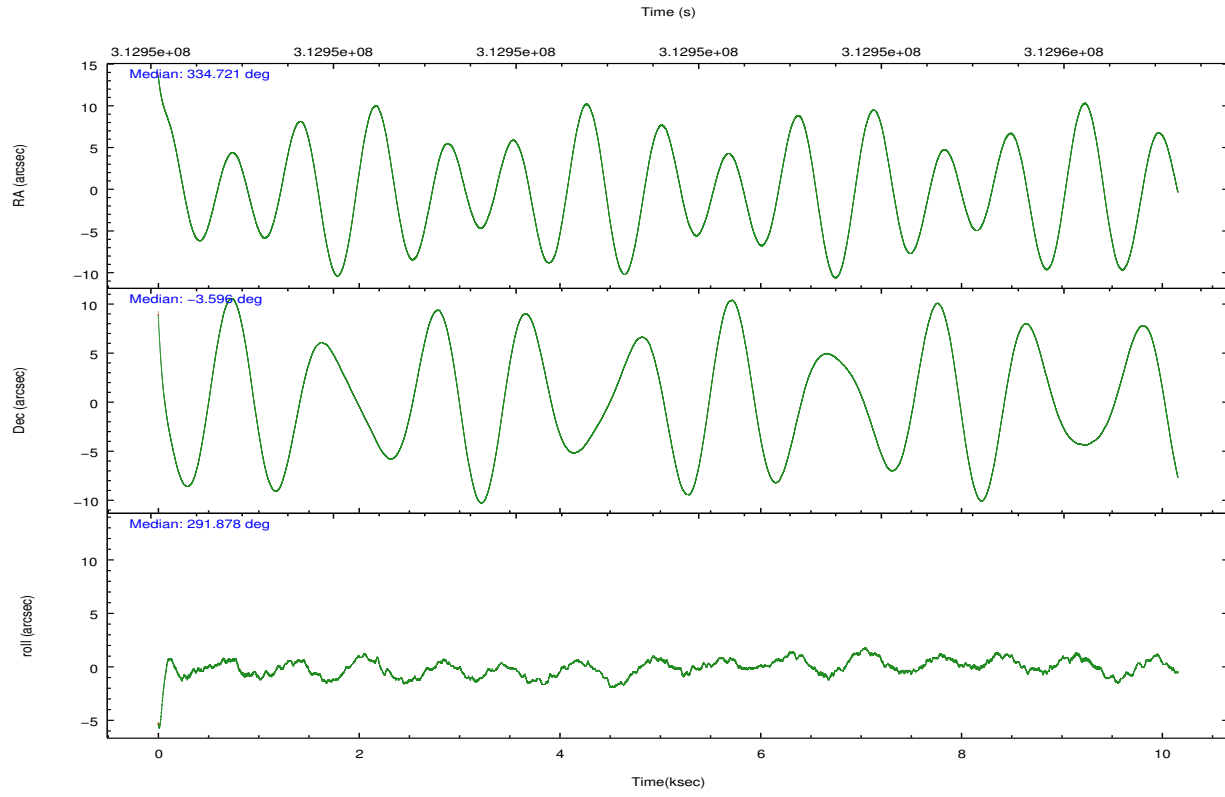


## 2.2 Compared Parameters

Parameter	Planned	Actual	Parameter	Planned	Actual
Instrument	ACIS	ACIS	Obspar format version number	7	7
Detector	ACIS-7	ACIS-7	Obspar file type	PREDICTED	ACTUAL
Grating	NONE	NONE	Obspar update status	NONE	UPDATED
Data mode	VFAINT	VFAINT	Number of optional ACIS chips dropped	0	0
Observation mode	POINTING	POINTING	On-chip summing requested	N	N
[deg] Pointing RA	334.698799	334.7206190294742	Subarray requested	CUSTOM	1/8
[deg] Pointing Dec	-3.579632	-3.596213334538928	Subarray start row	1	1
[deg] Pointing Roll	291.723197	291.8811800525503	Subarray row count	128	128
[mm] SIM focus pos	-0.684267	-0.6828225247311905	Alternating exposures requested	N	N
[mm] SIM defocus	0	0.001444936568705701	[s] Primary exposure time	0.000000	0.4
[mm] SIM translation stage pos	-179.382523	-179.3813108744966			
[mm] SIM translation stage offset	-10.75	-10.75121170851116			
[s] Observation start time (MET)	312946747.184000	312945728.69027			
Observation start date	2007-12-02T01:38:02	2007-12-02T01:22:08			
[s] Observation end time (MET)	312956747.184000	312957548.99084			
Observation end date	2007-12-02T04:24:42	2007-12-02T04:39:08			
Read mode	TIMED	TIMED			

## 2.3 Aspect



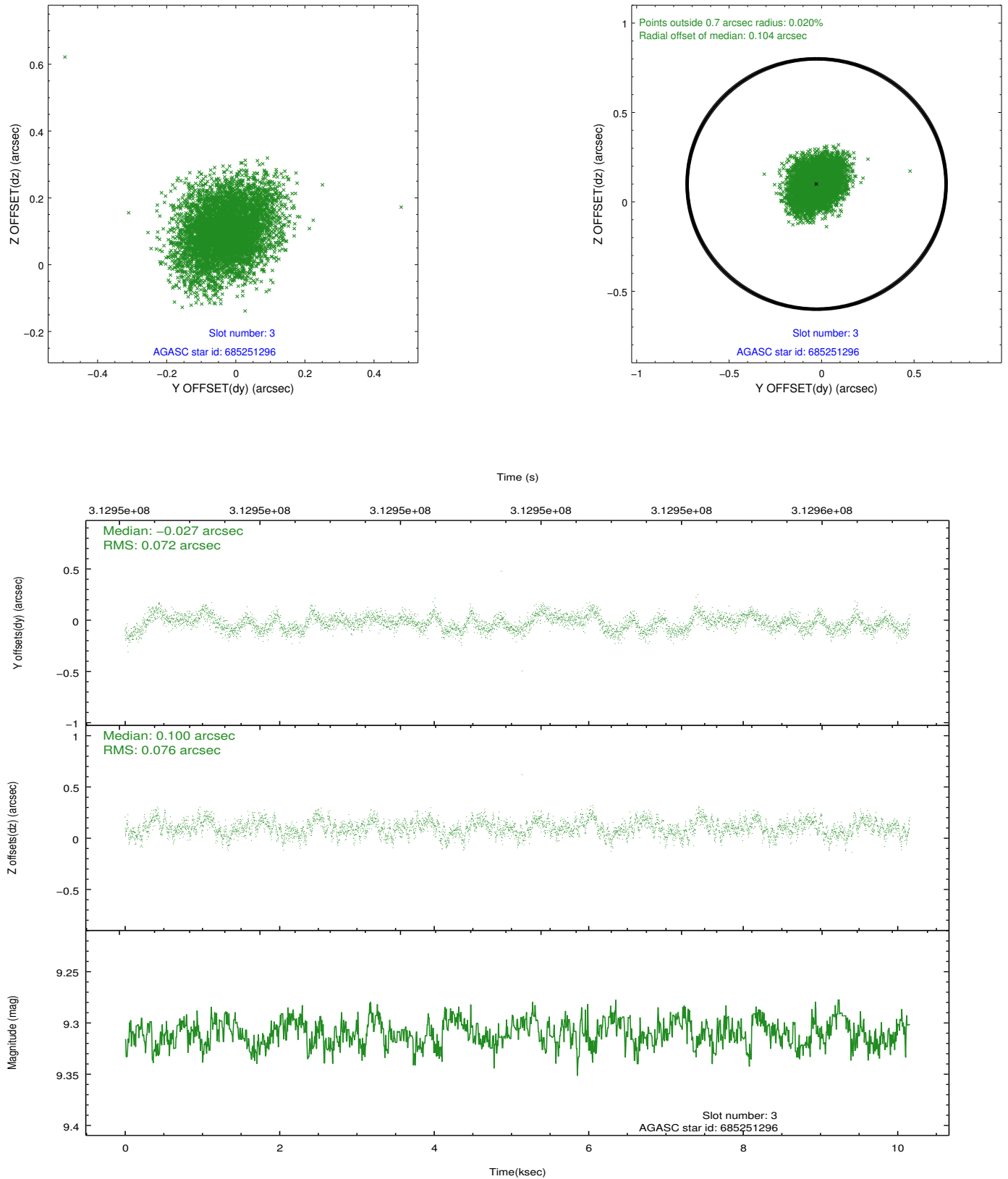


### Slot Statistics

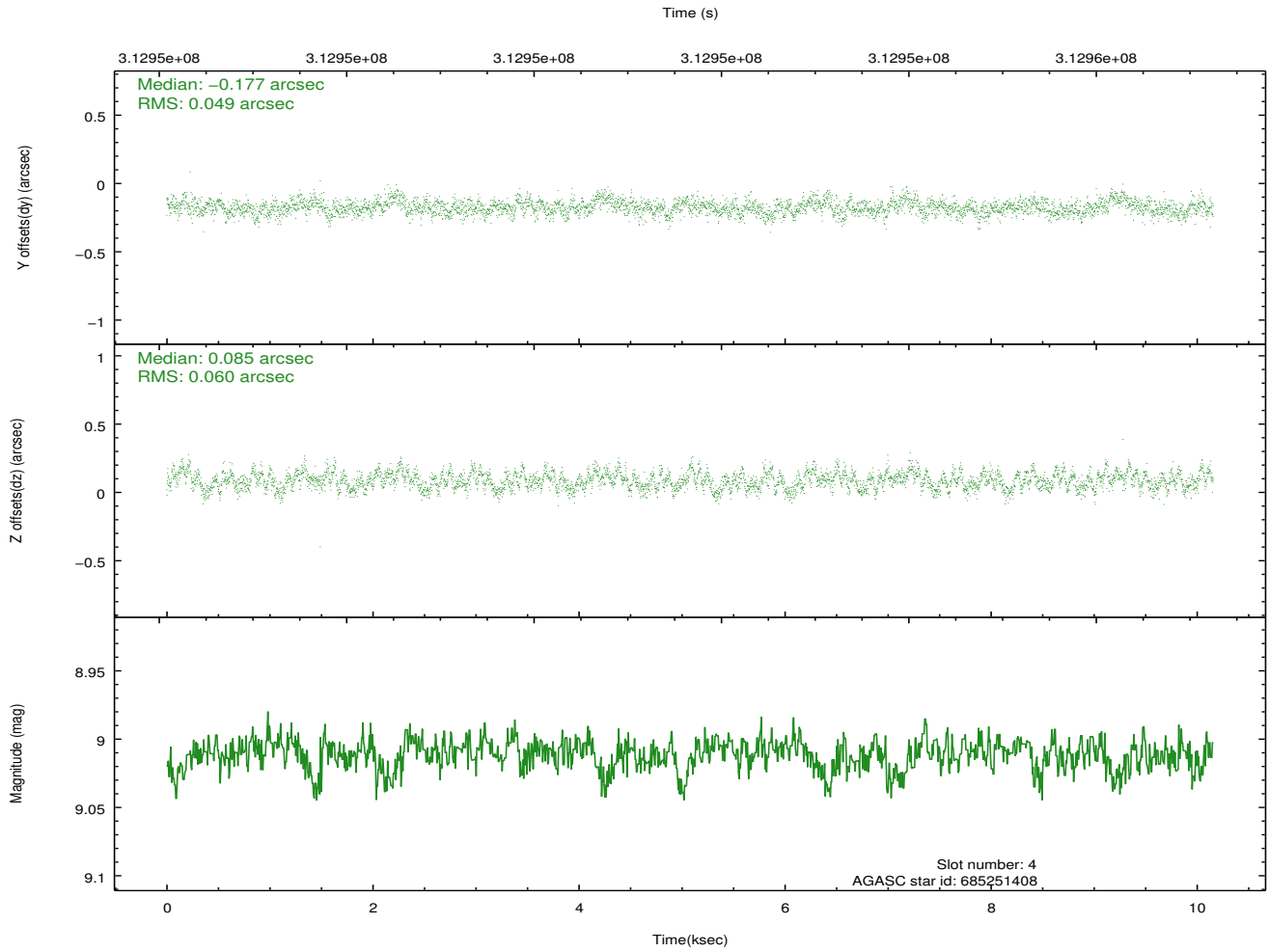
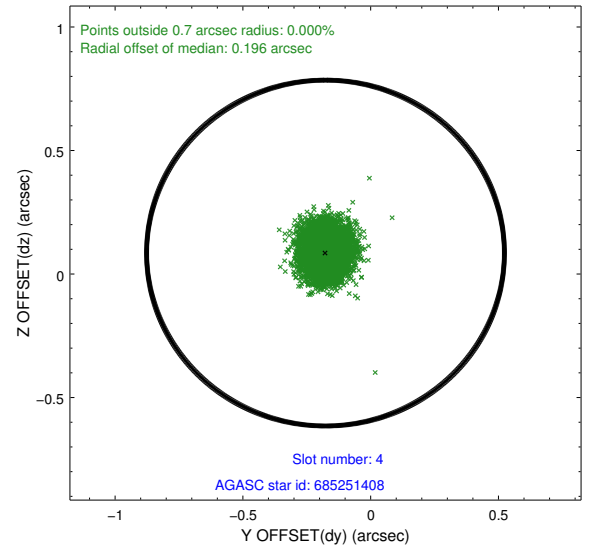
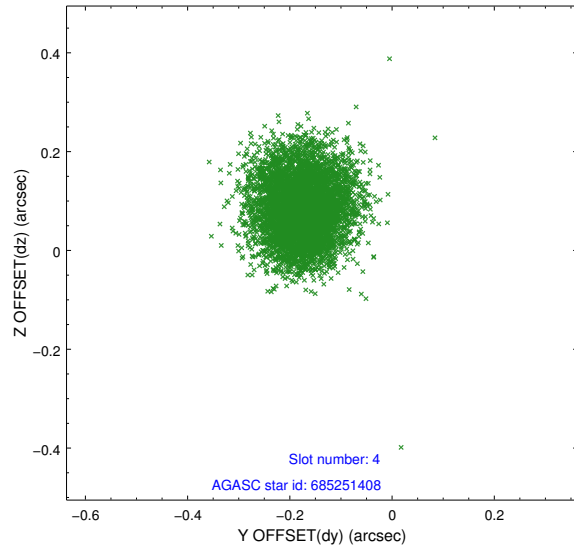
slot	status	id	mag	n_pts	med_dy	med_dz	dr1	dr2	ra	dec	mean_y	mean_z
0	FID	ACIS-S-1	7.18	2478	0.073	0.218	0.010	0.018	0.000000	0.000000	929.75	-1952.60
1	FID	ACIS-S-2	7.07	2478	-0.224	-0.204	0.009	0.016	0.000000	0.000000	-766.16	-1958.30
2	FID	ACIS-S-6	7.40	2477	0.131	-0.011	0.008	0.012	0.000000	0.000000	395.08	587.83
3	GUIDE	685251296	9.31	4951	-0.027	0.100	0.112	0.179	334.433018	-3.343248	-1143.74	-572.22
4	GUIDE	685251408	9.01	4950	-0.177	0.085	0.083	0.131	334.512424	-3.172976	-1607.95	-80.70
5	GUIDE	685254528	8.09	4955	0.171	-0.145	0.054	0.089	334.954282	-4.066255	1967.25	203.72
6	GUIDE	685257144	9.15	4954	0.318	-0.118	0.091	0.150	334.457122	-4.250644	1924.14	-1699.99
7	GUIDE	685246520	8.54	4952	-0.286	0.078	0.062	0.098	334.885196	-2.818932	-2295.73	1636.06

## 2.4 Star Slots

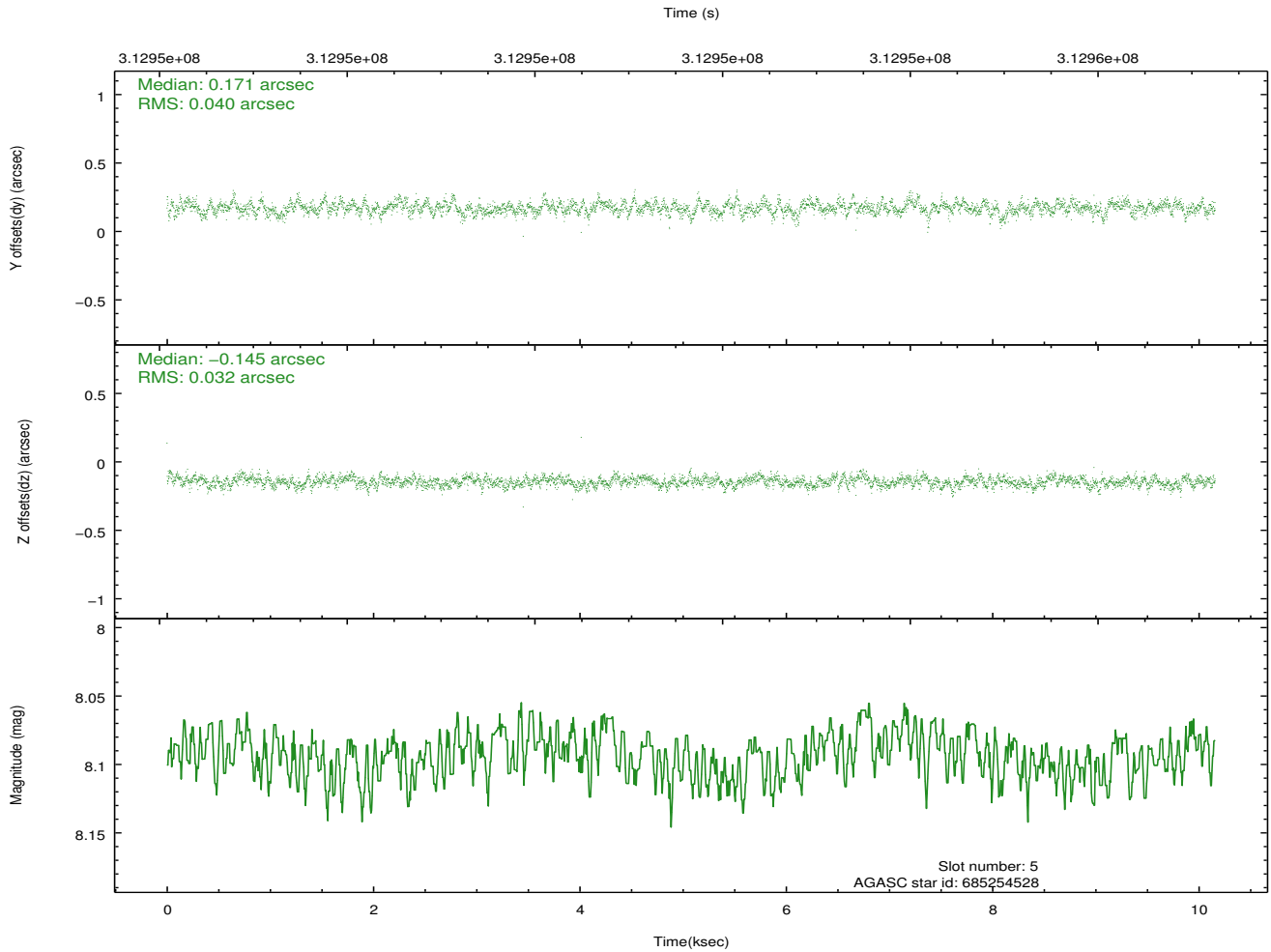
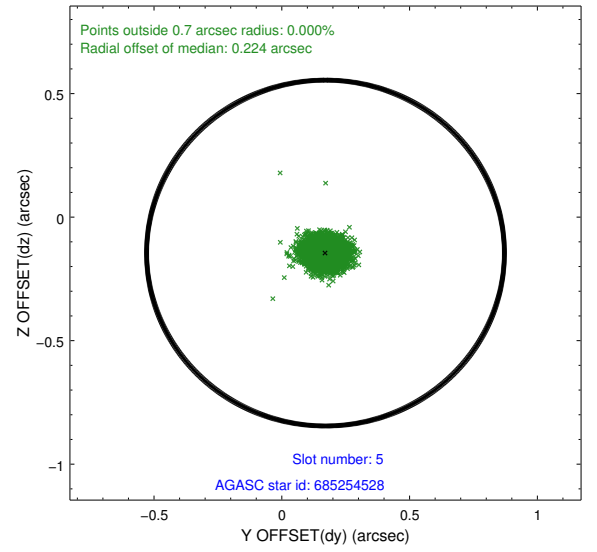
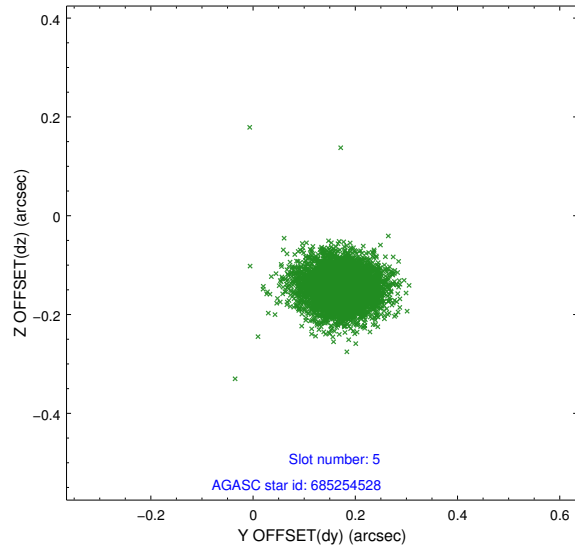
### 2.4.1 Slot 3



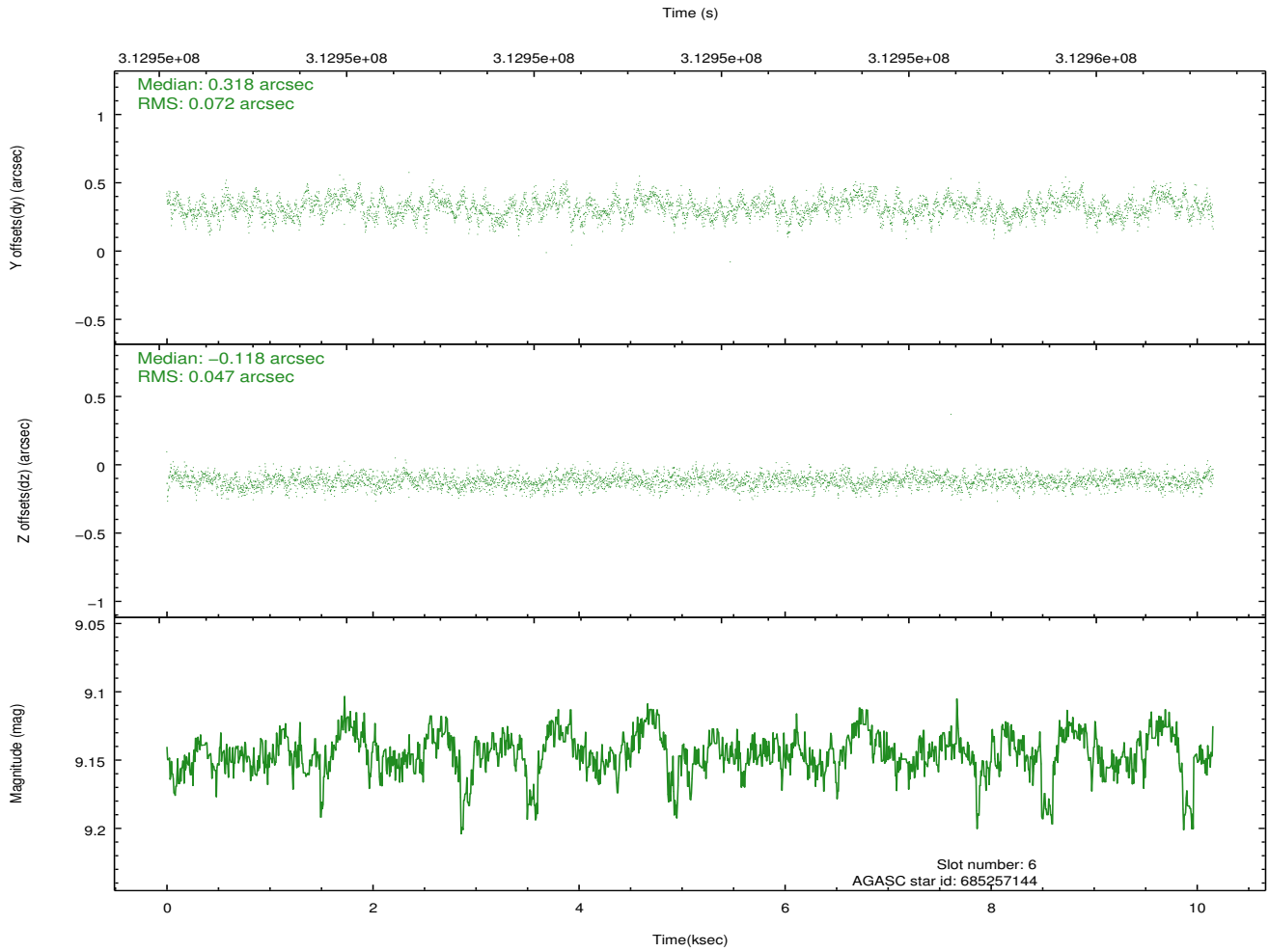
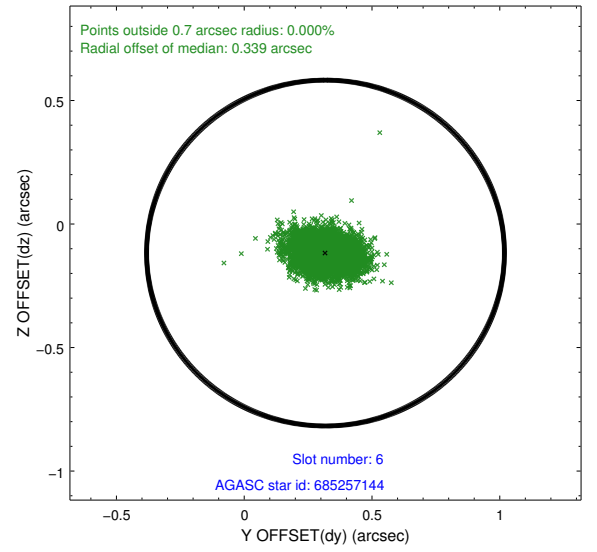
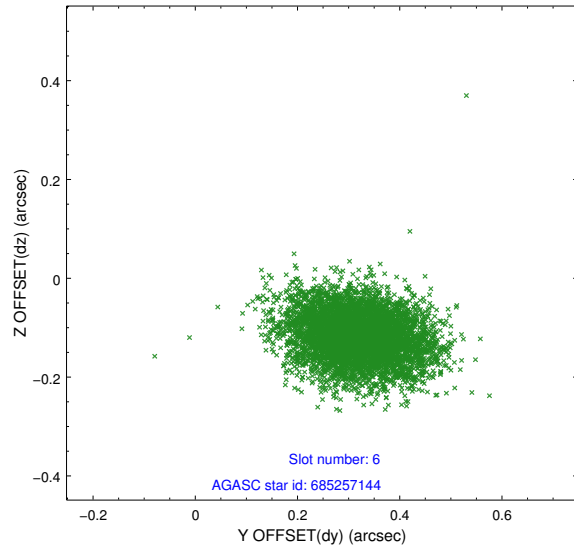
## 2.4.2 Slot 4



### 2.4.3 Slot 5

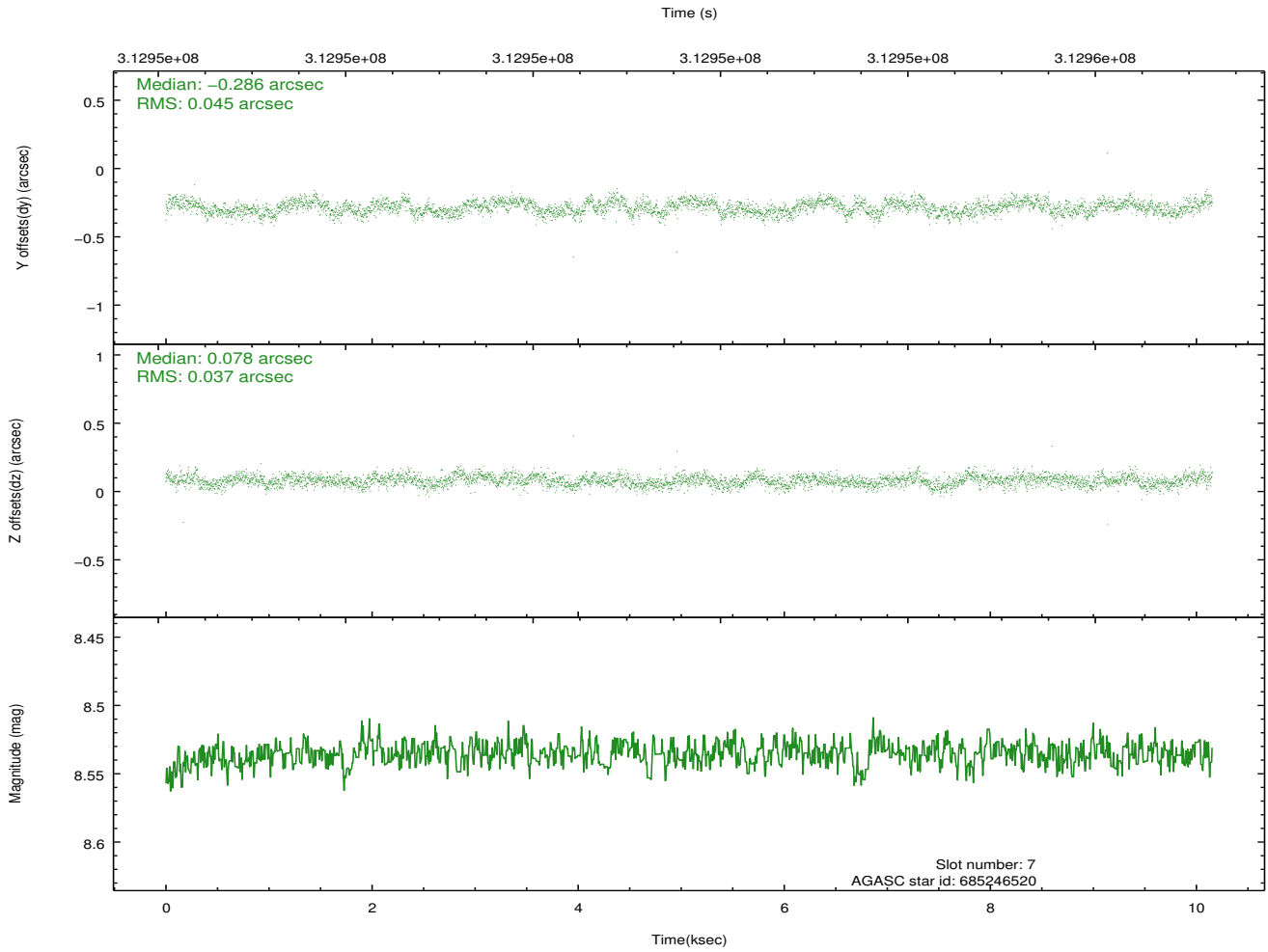
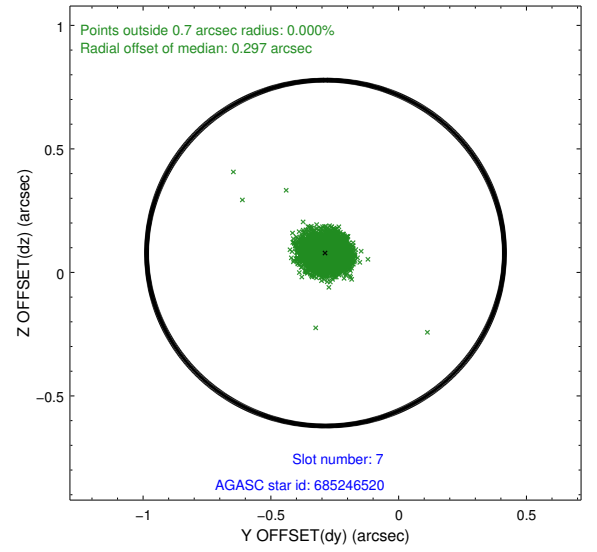
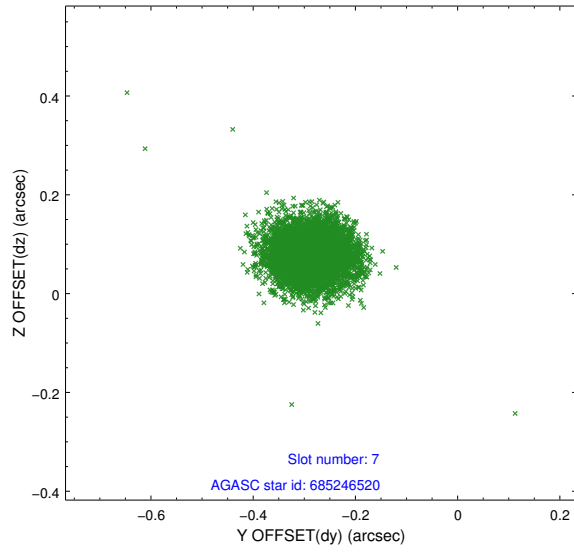


## 2.4.4 Slot 6



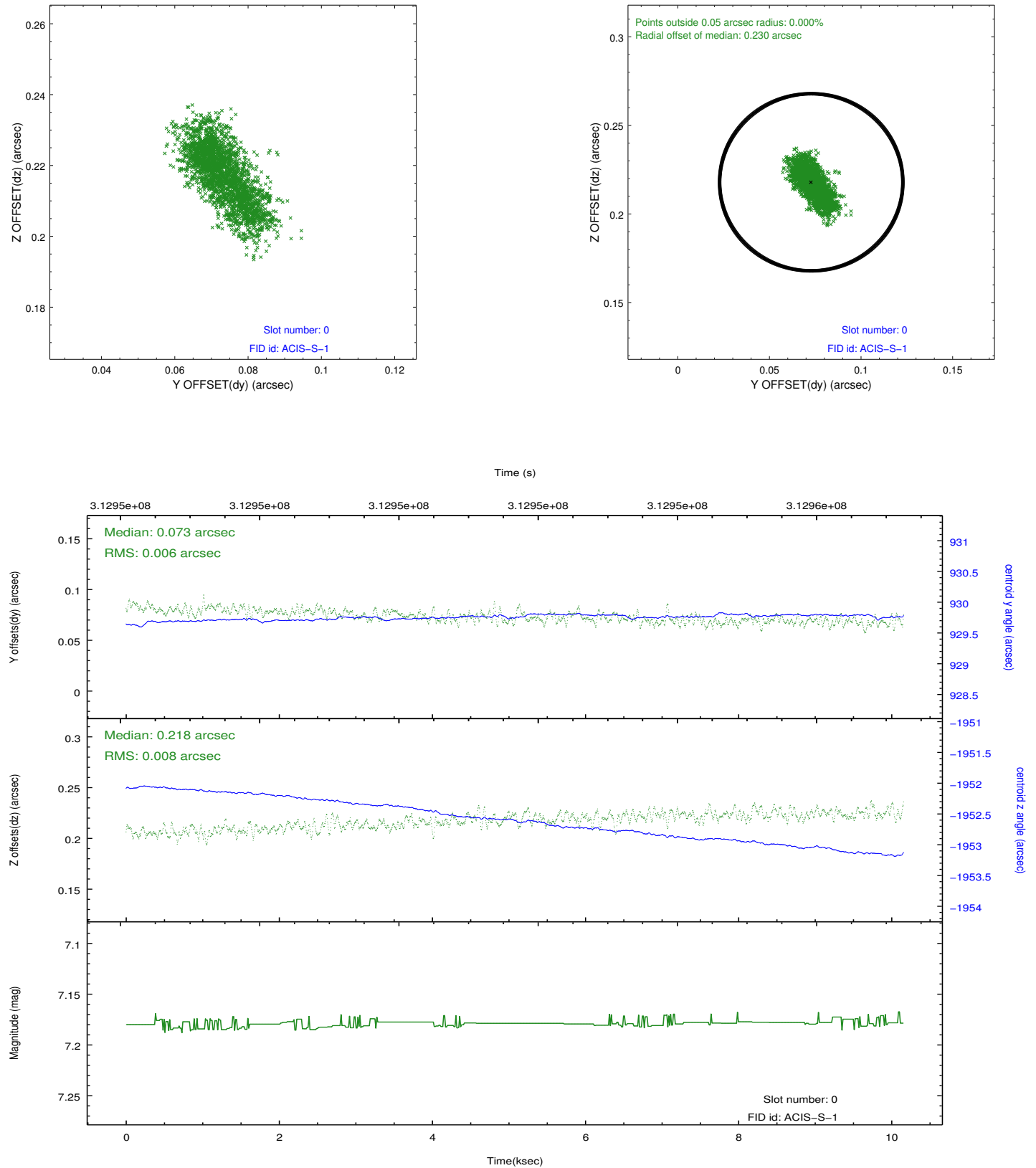


## 2.4.5 Slot 7

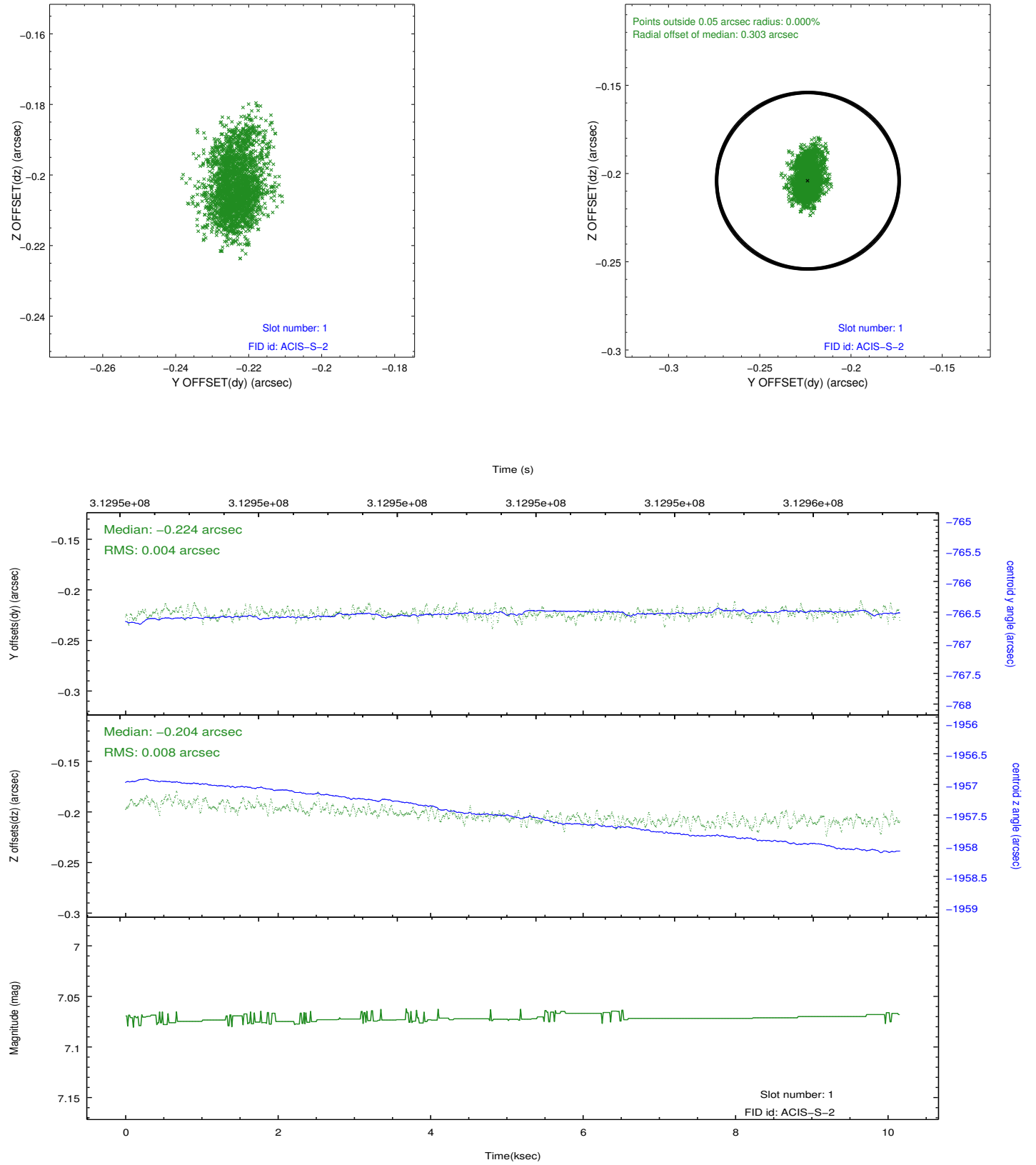


## 2.5 FID Slots

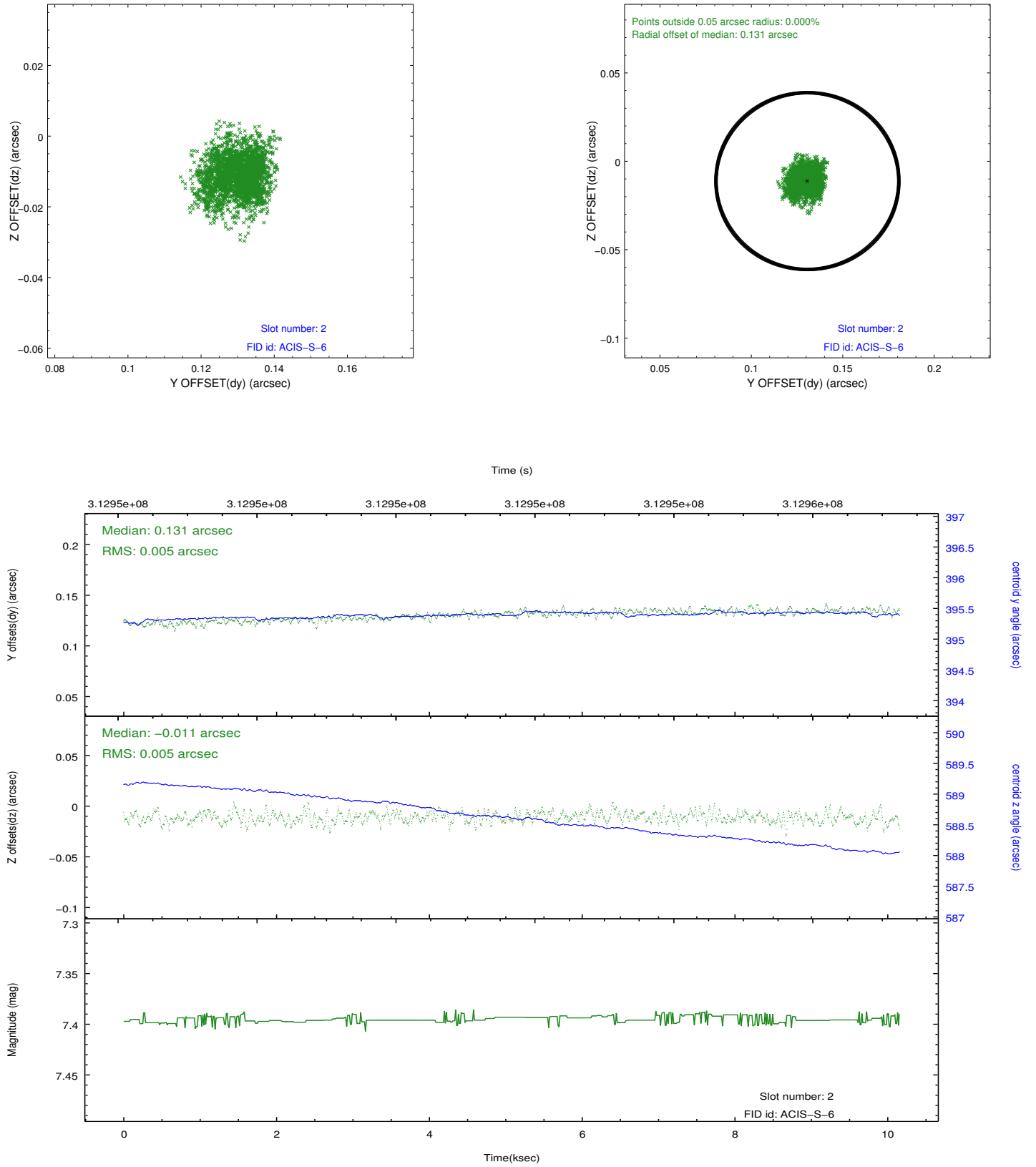
### 2.5.1 Slot 0



## 2.5.2 Slot 1



### 2.5.3 Slot 2



## A Summary

### A.1 Status

V&V Scientist	Beth Sundheim
V&V Date (YYYY-MM-DD)	2012.05.07
V&V Edition	1
V&V Disposition and Status	OK
V&V Charge Time	10.1563993

### A.2 Comments