

V&V Reference Report

L2 ASCDS Version : 8.4.4

Observation 9271 - L2 Version 2
Chandra X-Ray Center

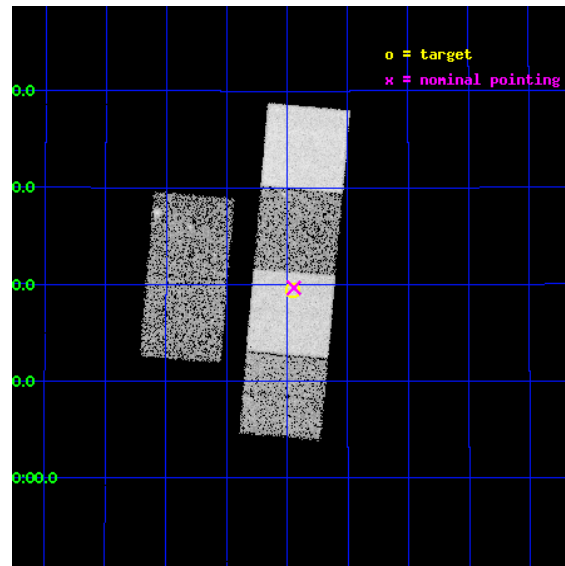
L2 Processing Date : May 6 2012

Contents

1	Front	2
2	OBI	3
2.1	OBI	3
2.1.1	Images	3
2.1.2	Bias	3
2.1.3	Parameters	4
2.1.4	Events	4
2.2	Compared Parameters	5
2.3	Aspect	6
2.4	Star Slots	9
2.4.1	Slot 3	9
2.4.2	Slot 4	10
2.4.3	Slot 5	11
2.4.4	Slot 6	12
2.4.5	Slot 7	13
2.5	FID Slots	14
2.5.1	Slot 0	14
2.5.2	Slot 1	15
2.5.3	Slot 2	16
A	Summary	17
A.1	Status	17
A.2	Comments	17

1 Front

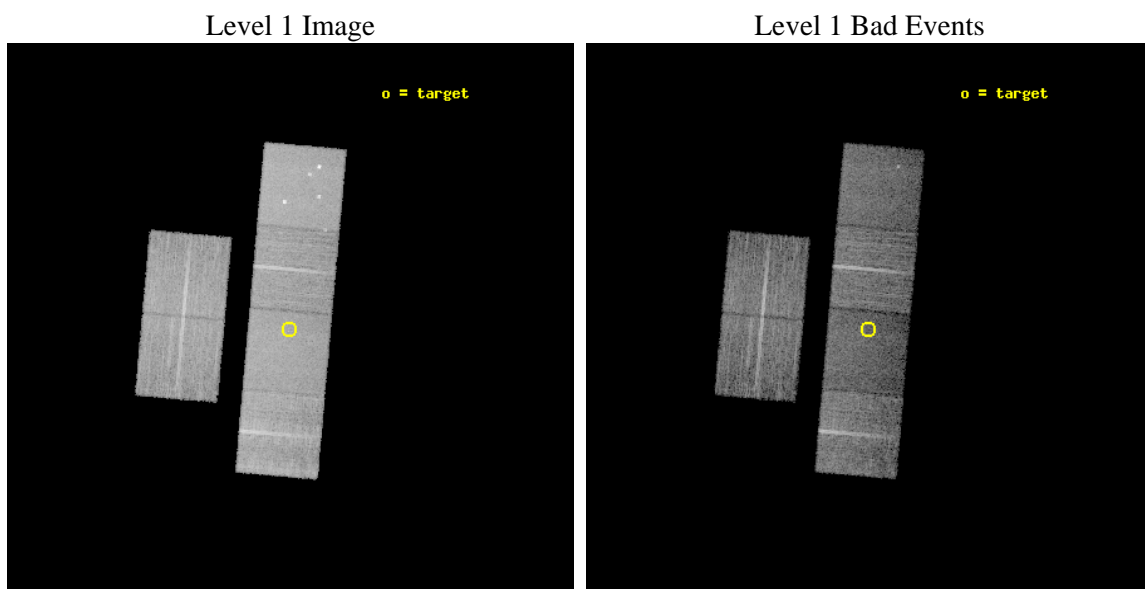
seq_num	701712	Sequence number
obs_id	9271	Observation id
title	A Chandra Survey of Nearby X-shaped Radio Galaxies	Proposal title
observer	Prof Christopher Reynolds	Principal investigator
object	J0831+3219 (4C+32.25)	Source name
dtcycle	0	
cycle	P	events from which exps? Prim/Second/Both
ra_targ	127.864583	Observer's specified target RA [deg]
dec_targ	32.323889	Observer's specified target Dec [deg]
ra_nom	127.86109545054	Nominal RA [deg]
dec_nom	32.32774232064	Nominal Dec [deg]
roll_nom	95.075140064721	Nominal Roll [deg]
revision	2	Processing version of data
ontime	10081.727413118	Sum of GTIs [s]
livetime	9954.0665101255	Livetime [s]
ontime2	10081.768453121	Sum of GTIs [s]
ontime3	10081.604293108	Sum of GTIs [s]
ontime5	10081.686373115	Sum of GTIs [s]
ontime6	10081.645333111	Sum of GTIs [s]
ontime7	10081.727413118	Sum of GTIs [s]
ontime8	10081.563253105	Sum of GTIs [s]
l2events	120323	Number of level 2 events



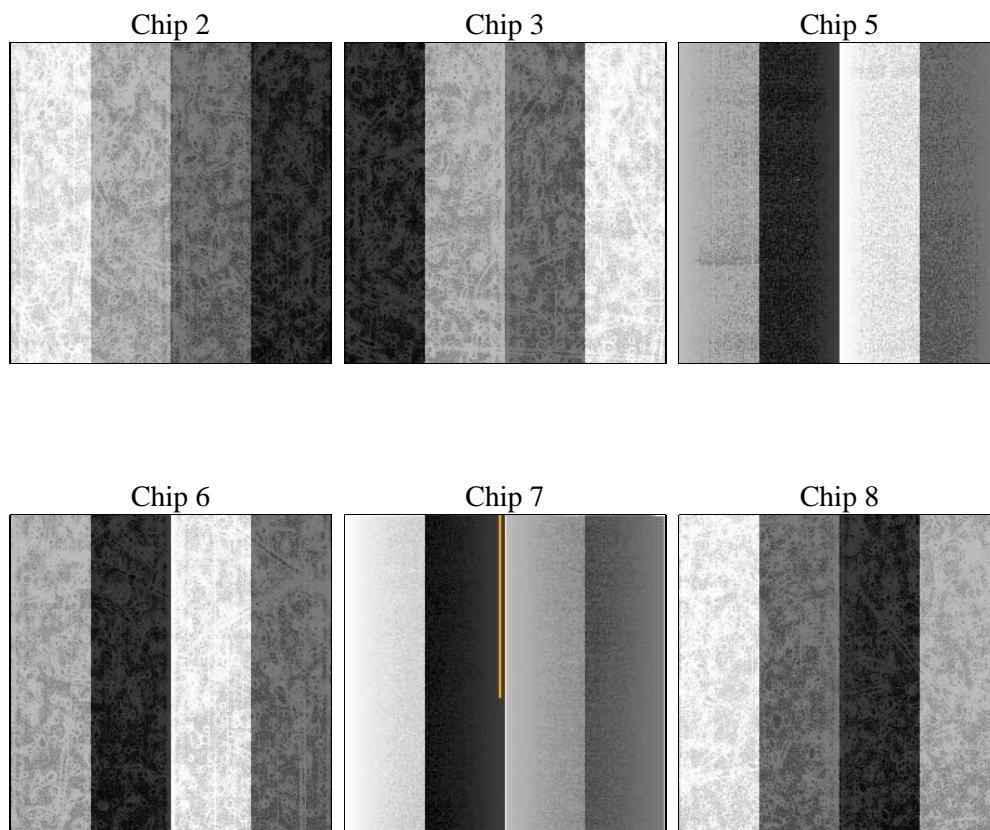
2 OBI

2.1 OBI

2.1.1 Images



2.1.2 Bias



2.1.3 Parameters

obi_num	1	Obi number	sched_exp_time	10000.000000	[s] Scheduled observation exposure time
ascdsver	8.4.4	Processing system revision	ontime	10081.727413118	Sum of GTIs [s]
caldsver	4.4.9	 	ontime2	10081.768453121	Sum of GTIs [s]
date	2012-05-06T14:22:55	Date and time of file creation	ontime3	10081.604293108	Sum of GTIs [s]
revision	2	Processing version of data	ontime5	10081.686373115	Sum of GTIs [s]
			ontime6	10081.645333111	Sum of GTIs [s]
			ontime7	10081.727413118	Sum of GTIs [s]
			ontime8	10081.563253105	Sum of GTIs [s]
			l1events	555710	Number of level 1 events

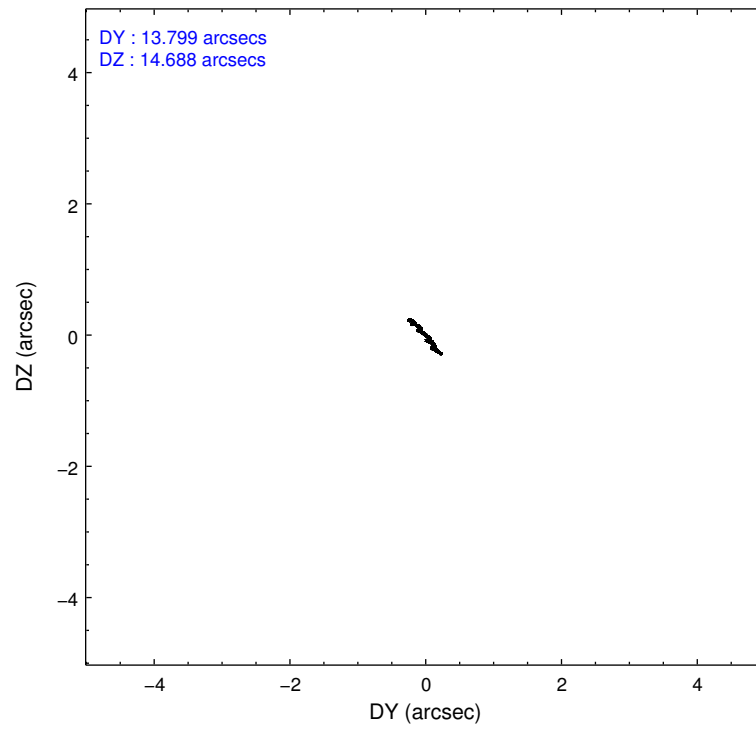
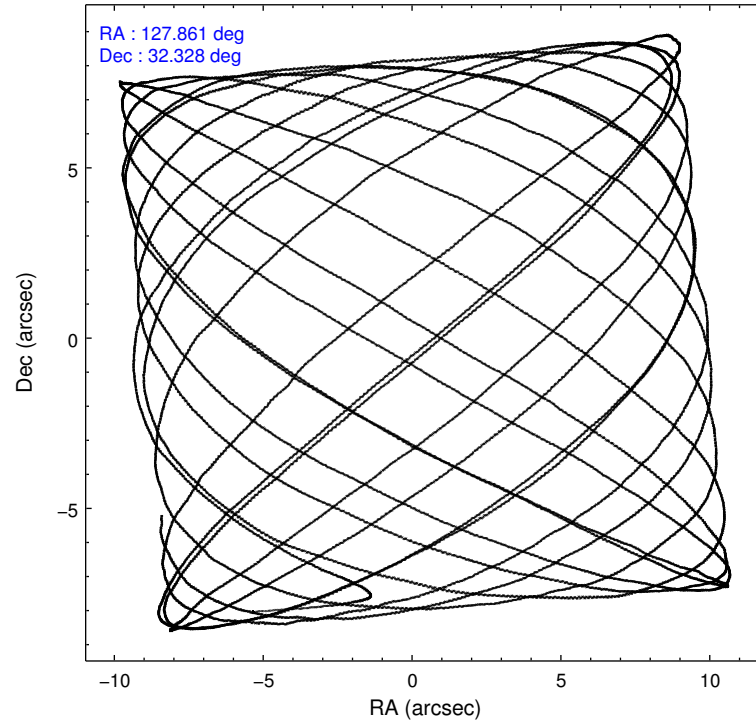
2.1.4 Events

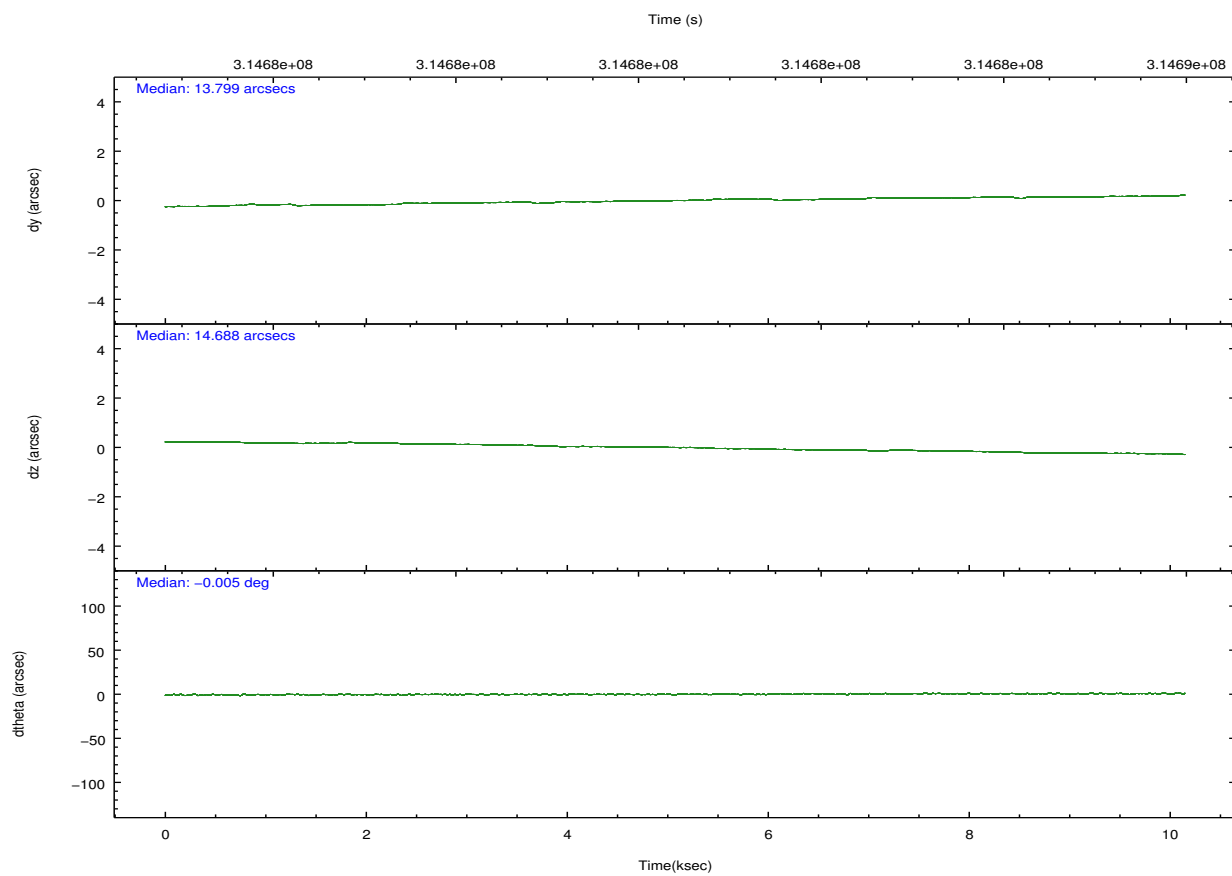
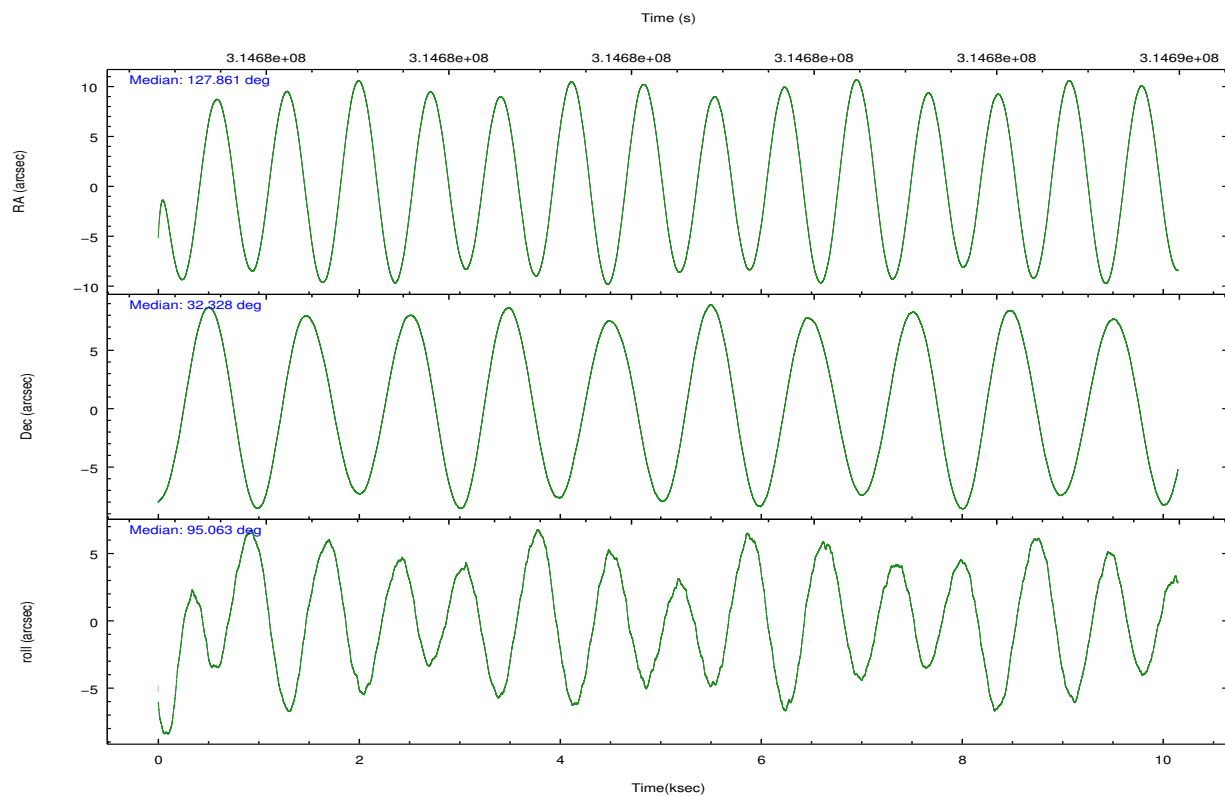
	ccd 2	ccd 3	ccd 5	ccd 6	ccd 7	ccd 8		ccd 2	ccd 3	ccd 5	ccd 6	ccd 7	ccd 8
level 1 events	87440	81502	113681	81633	89351	102103	grade 0 events	3039	2572	7836	2969	3757	7542
rejected events	79280	74250	55826	73271	48476	76880		3%	3%	6%	3%	4%	7%
rejected %	90%	91%	49%	89%	54%	75%	grade 1 events	55	53	213	41	107	81
								0%	0%	0%	0%	0%	0%
							grade 2 events	1915	1557	16654	1829	8116	5599
								2%	1%	14%	2%	9%	5%
							grade 3 events	847	824	2353	880	3790	2736
								0%	1%	2%	1%	4%	2%
							grade 4 events	860	845	2204	904	3762	2664
								0%	1%	1%	1%	4%	2%
							grade 5 events	2716	3097	9004	3257	9294	4670
								3%	3%	7%	3%	10%	4%
							grade 6 events	1502	1455	28831	1784	21463	6699
								1%	1%	25%	2%	24%	6%
							grade 7 events	76506	71099	46586	69969	39062	72112
								87%	87%	40%	85%	43%	70%

2.2 Compared Parameters

Parameter	Planned	Actual	Parameter	Planned	Actual
Instrument	ACIS	ACIS	Obspar format version number	7	7
Detector	ACIS-235678	ACIS-235678	Obspar file type	PREDICTED	ACTUAL
Grating	NONE	NONE	Obspar update status	NONE	UPDATED
Data mode	FAINT	FAINT	CCD I0 on	N	N
Observation mode	POINTING	POINTING	CCD I1 on	N	N
[deg] Pointing RA	127.880101	127.8610954505408	CCD I2 on	O2	Y
[deg] Pointing Dec	32.305612	32.32774232064025	CCD I3 on	O4	Y
[deg] Pointing Roll	94.908341	95.07514006472077	CCD S0 on	N	N
[mm] SIM focus pos	-0.684267	-0.6828225247311905	CCD S1 on	O1	Y
[mm] SIM defocus	0	0.001444936568705701	CCD S2 on	O5	Y
[mm] SIM translation stage pos	-190.132523	-190.1425803651734	CCD S3 on	Y	Y
[mm] SIM translation stage offset	0	0.01005778216563158	CCD S4 on	O3	Y
[s] Observation start time (MET)	314675474.184000	314674449.18635	CCD S5 on	N	N
Observation start date	2007-12-22T01:50:09	2007-12-22T01:34:09	Number of optional ACIS chips dropped	0	0
[s] Observation end time (MET)	314685474.184000	314686161.34942	On-chip summing requested	N	N
Observation end date	2007-12-22T04:36:49	2007-12-22T04:49:21	Subarray requested	NONE	NONE
Read mode	TIMED	TIMED	Alternating exposures requested	N	N
			[s] Primary exposure time	0.000000	3.2

2.3 Aspect



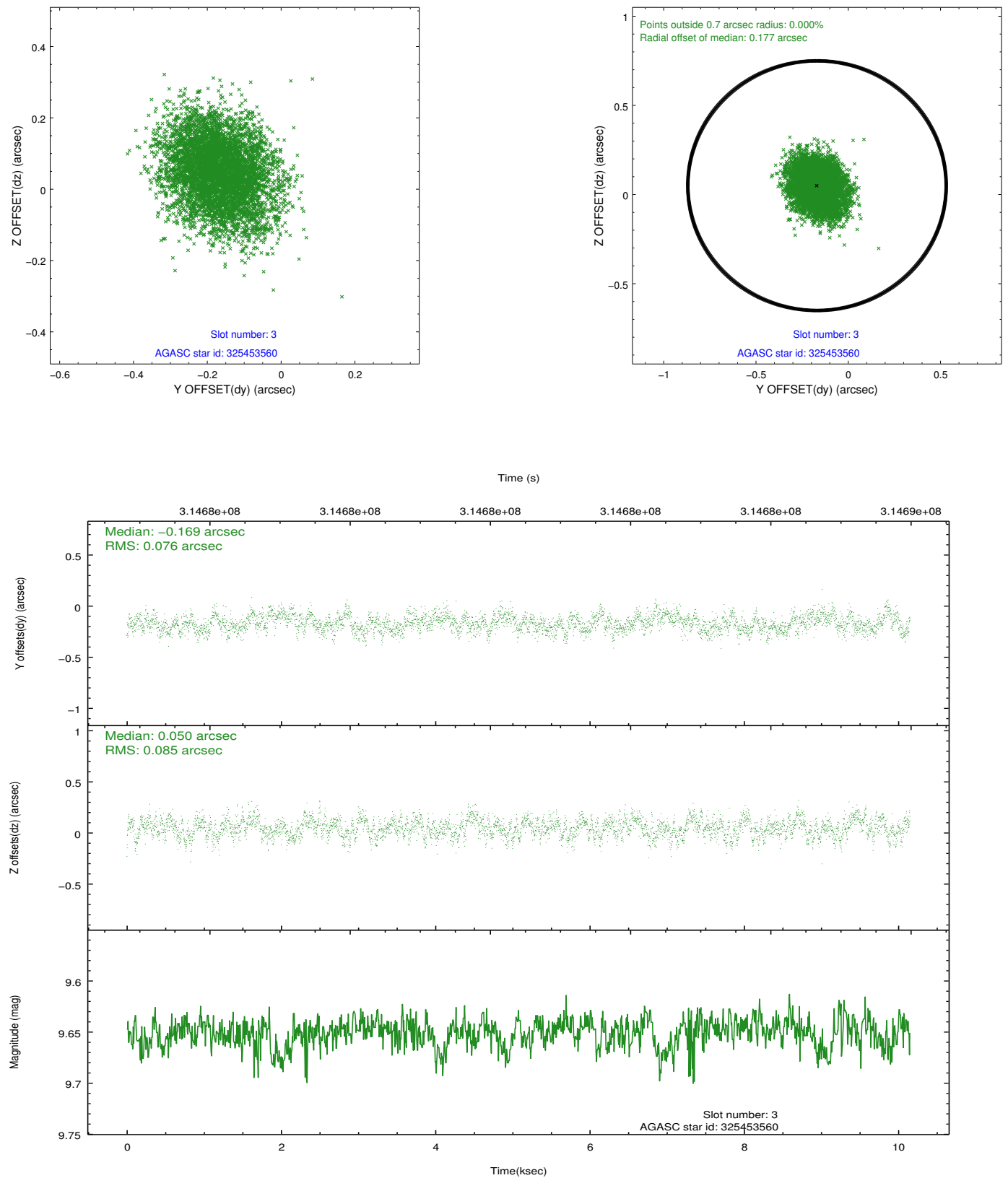


Slot Statistics

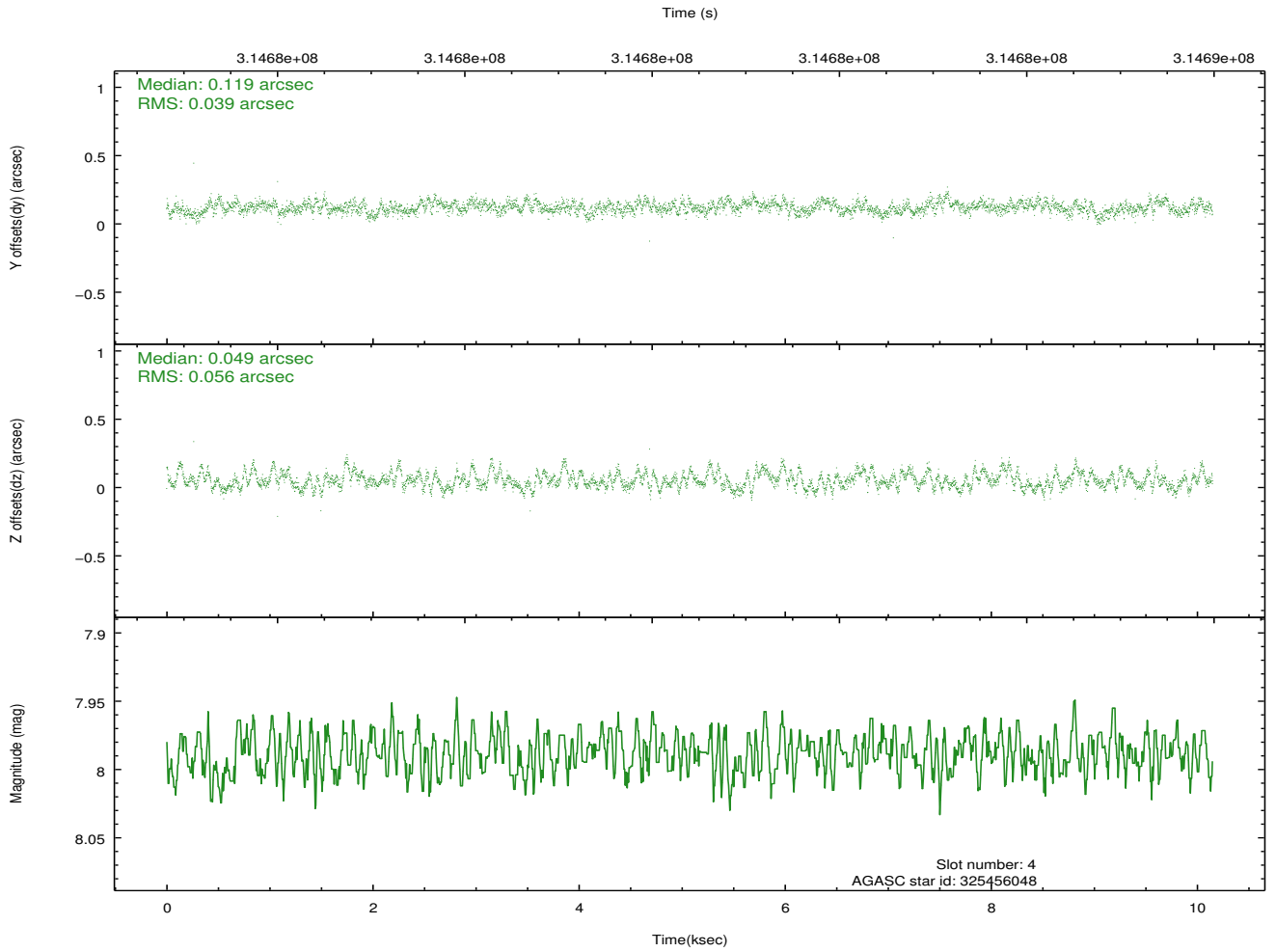
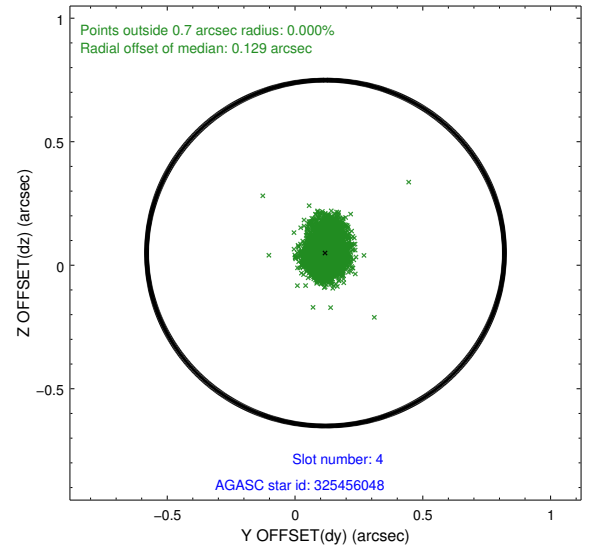
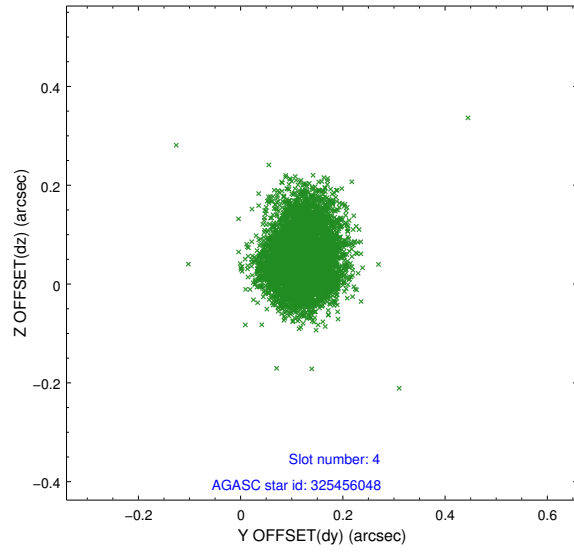
slot	status	id	mag	n_pts	med_dy	med_dz	dr1	dr2	ra	dec	mean_y	mean_z
0	FID	ACIS-S-2	7.09	2476	-0.062	-0.034	0.009	0.015	0.000000	0.000000	-766.77	-1736.04
1	FID	ACIS-S-4	7.19	2476	0.183	0.039	0.008	0.017	0.000000	0.000000	2146.50	172.01
2	FID	ACIS-S-5	7.22	2476	-0.152	0.004	0.008	0.017	0.000000	0.000000	-1819.05	166.19
3	GUIDE	325453560	9.65	4943	-0.169	0.050	0.122	0.195	128.370140	32.438942	354.65	-1524.72
4	GUIDE	325456048	7.99	4949	0.119	0.049	0.073	0.118	128.058958	32.170229	-531.37	-501.68
5	GUIDE	325458528	7.99	4952	0.009	-0.149	0.057	0.094	127.405324	32.052384	-781.30	1520.60
6	GUIDE	325848192	9.70	4950	0.001	0.025	0.135	0.220	128.509851	32.896323	1962.09	-2078.46
7	GUIDE	325852720	9.73	4944	0.030	0.020	0.135	0.213	128.101555	32.677772	1278.93	-783.44

2.4 Star Slots

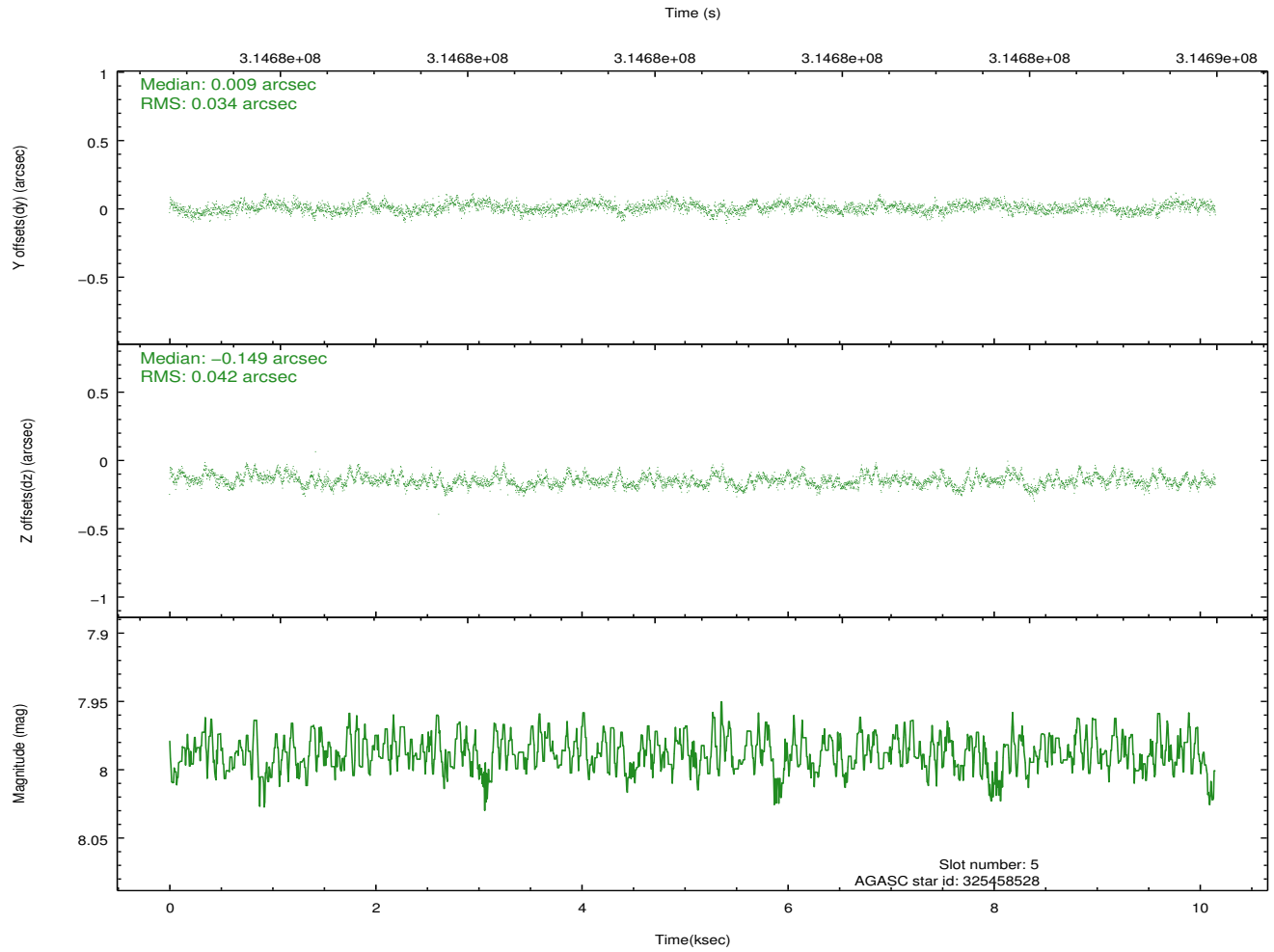
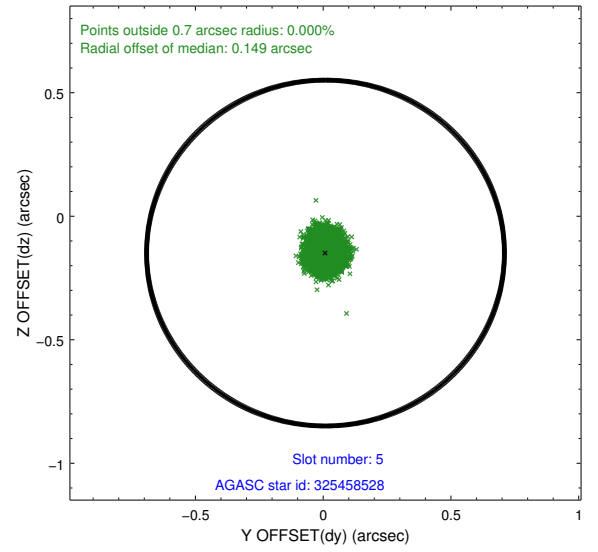
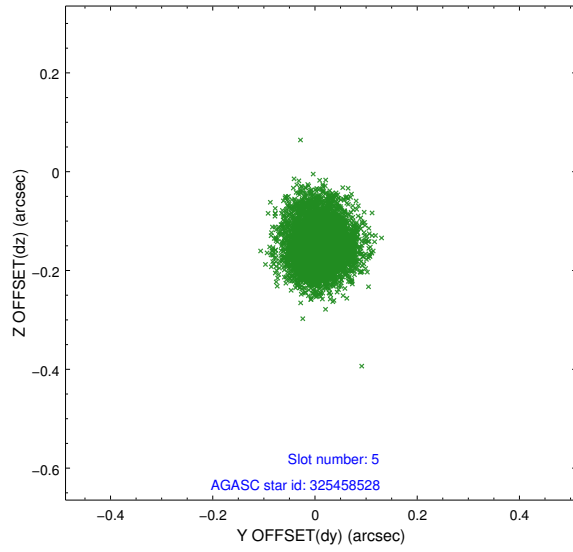
2.4.1 Slot 3



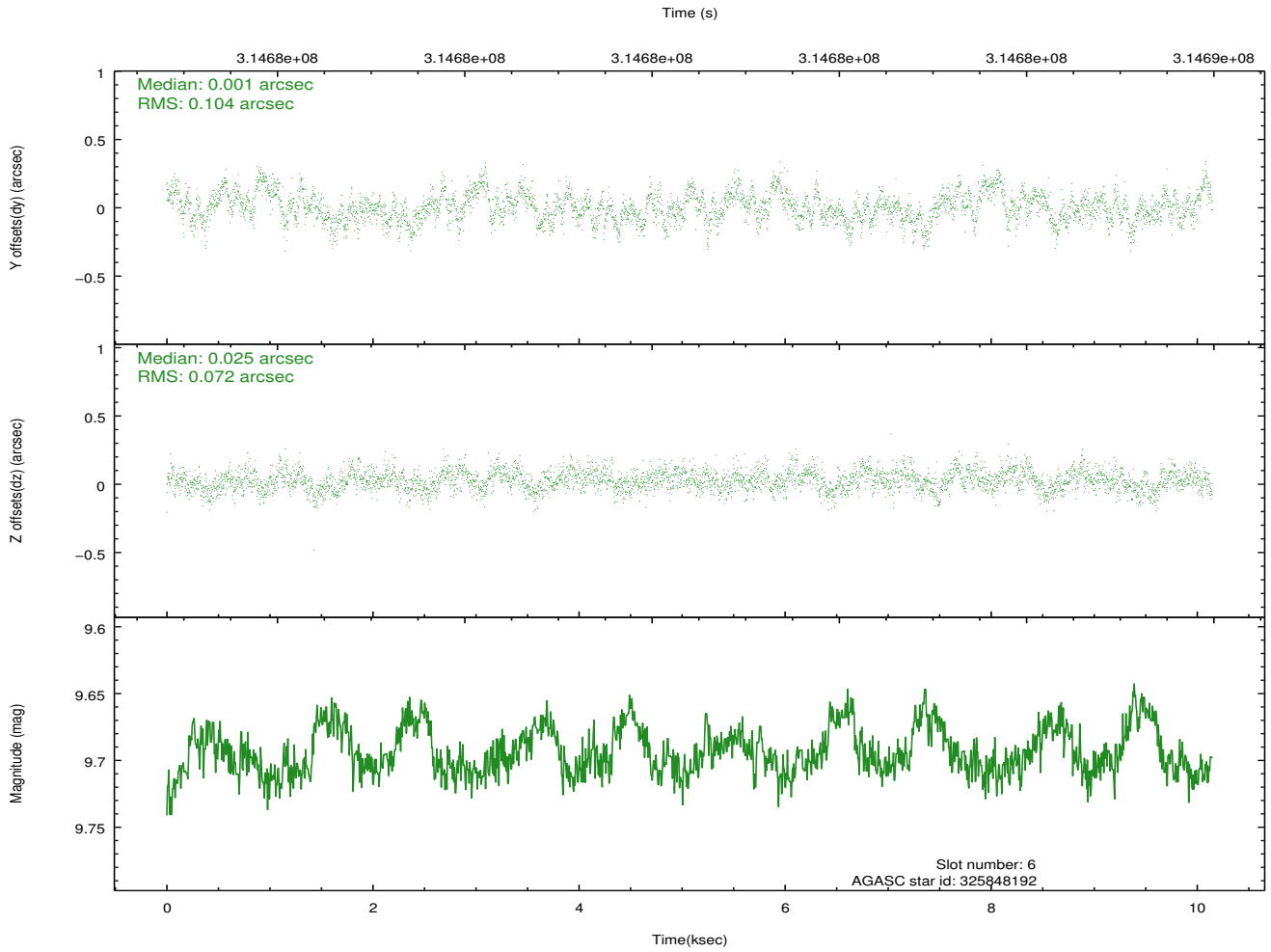
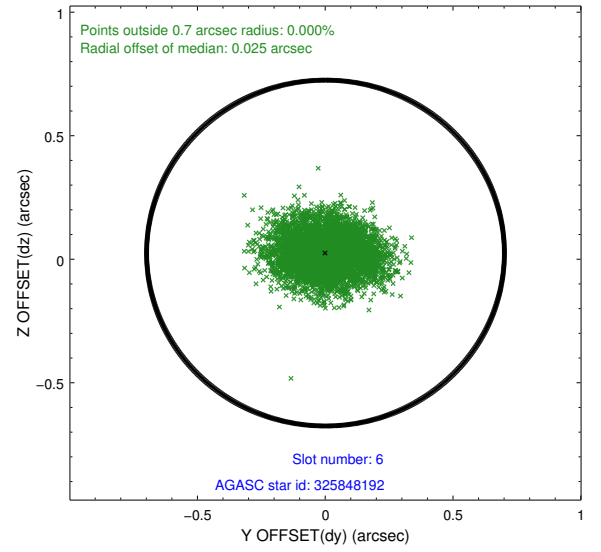
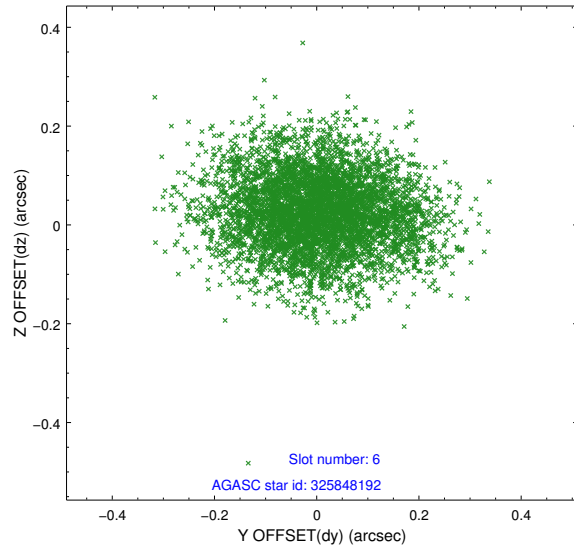
2.4.2 Slot 4



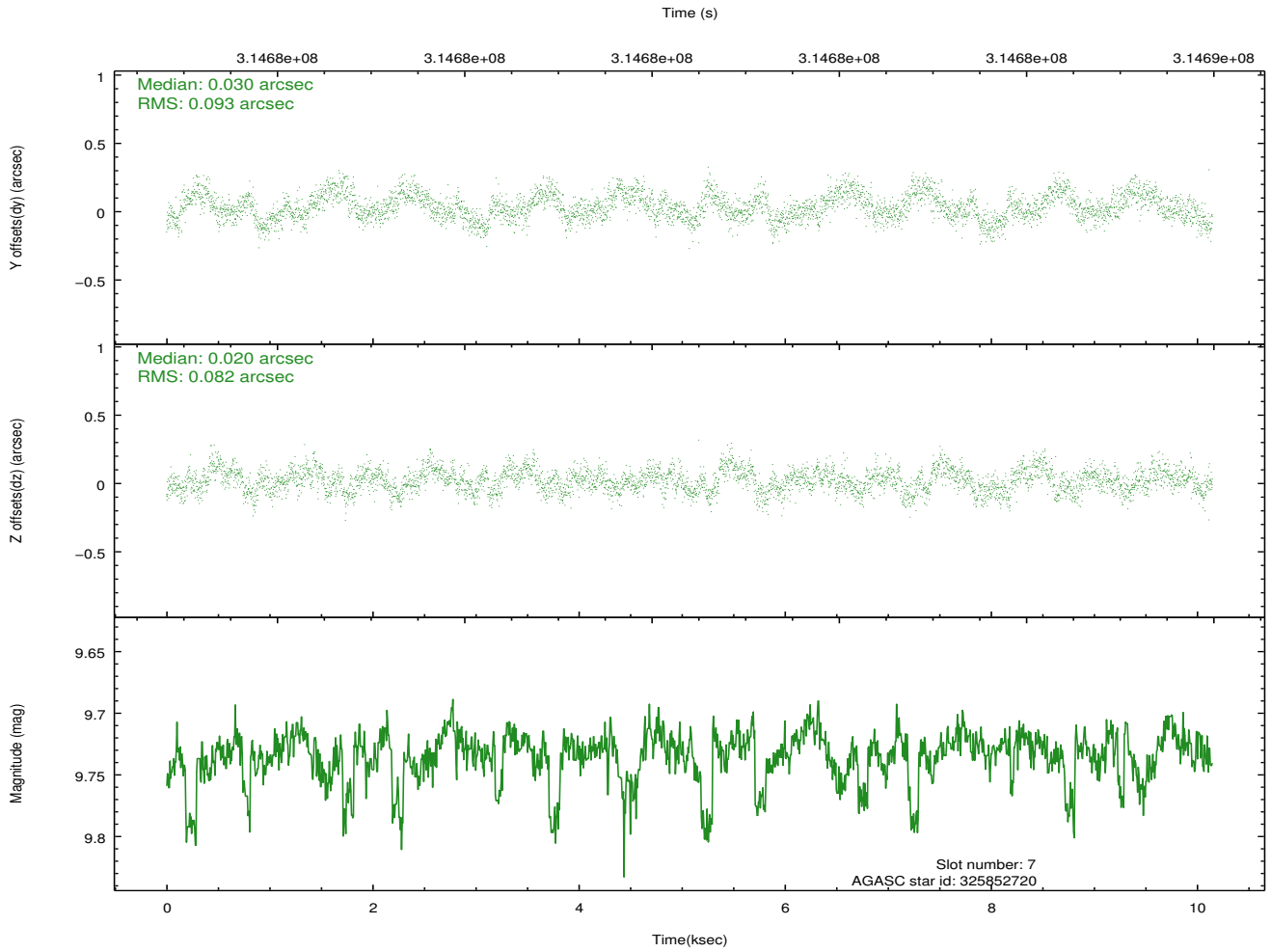
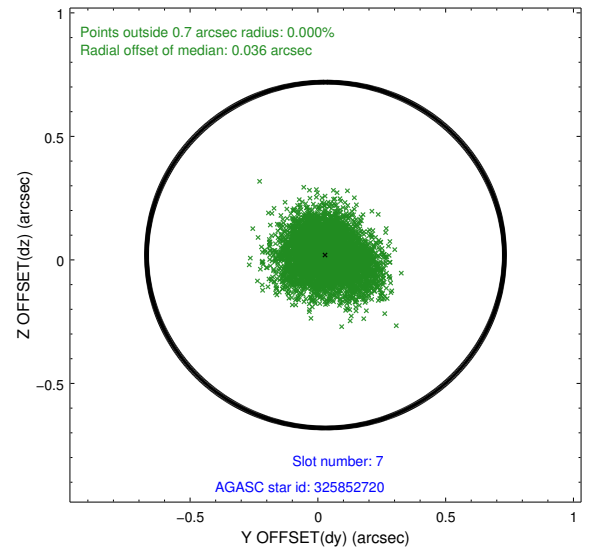
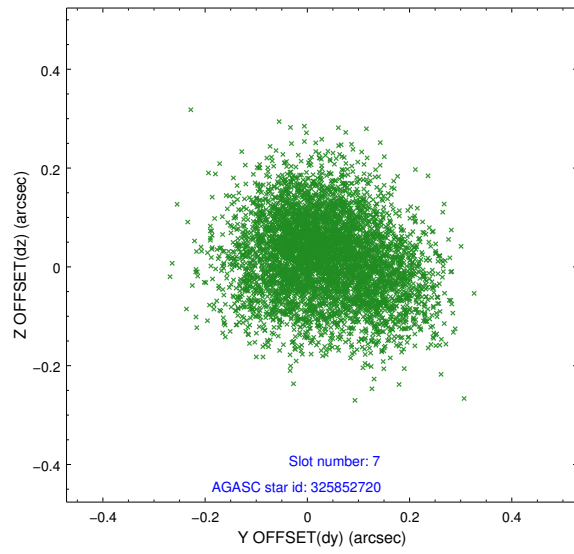
2.4.3 Slot 5



2.4.4 Slot 6

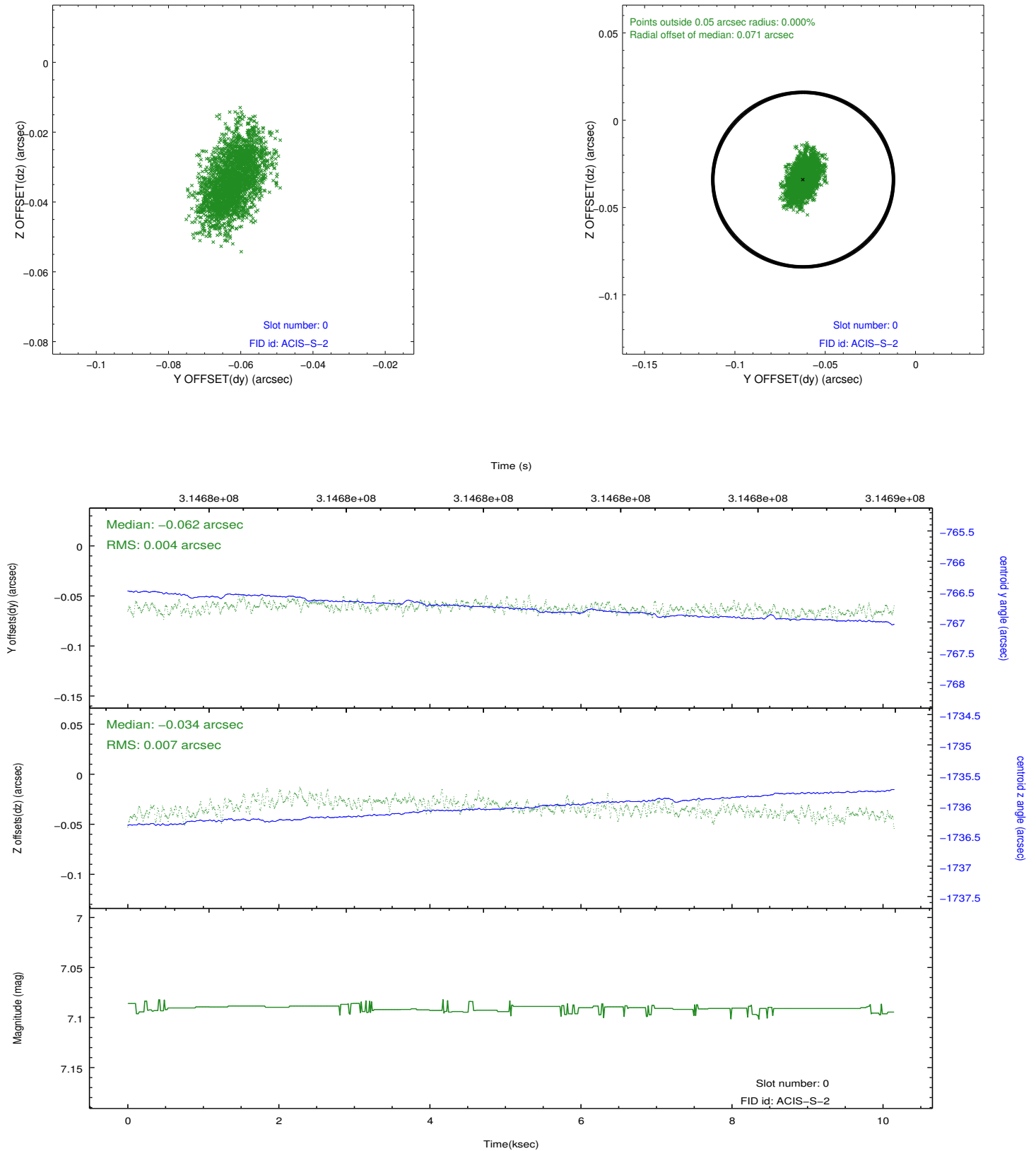


2.4.5 Slot 7

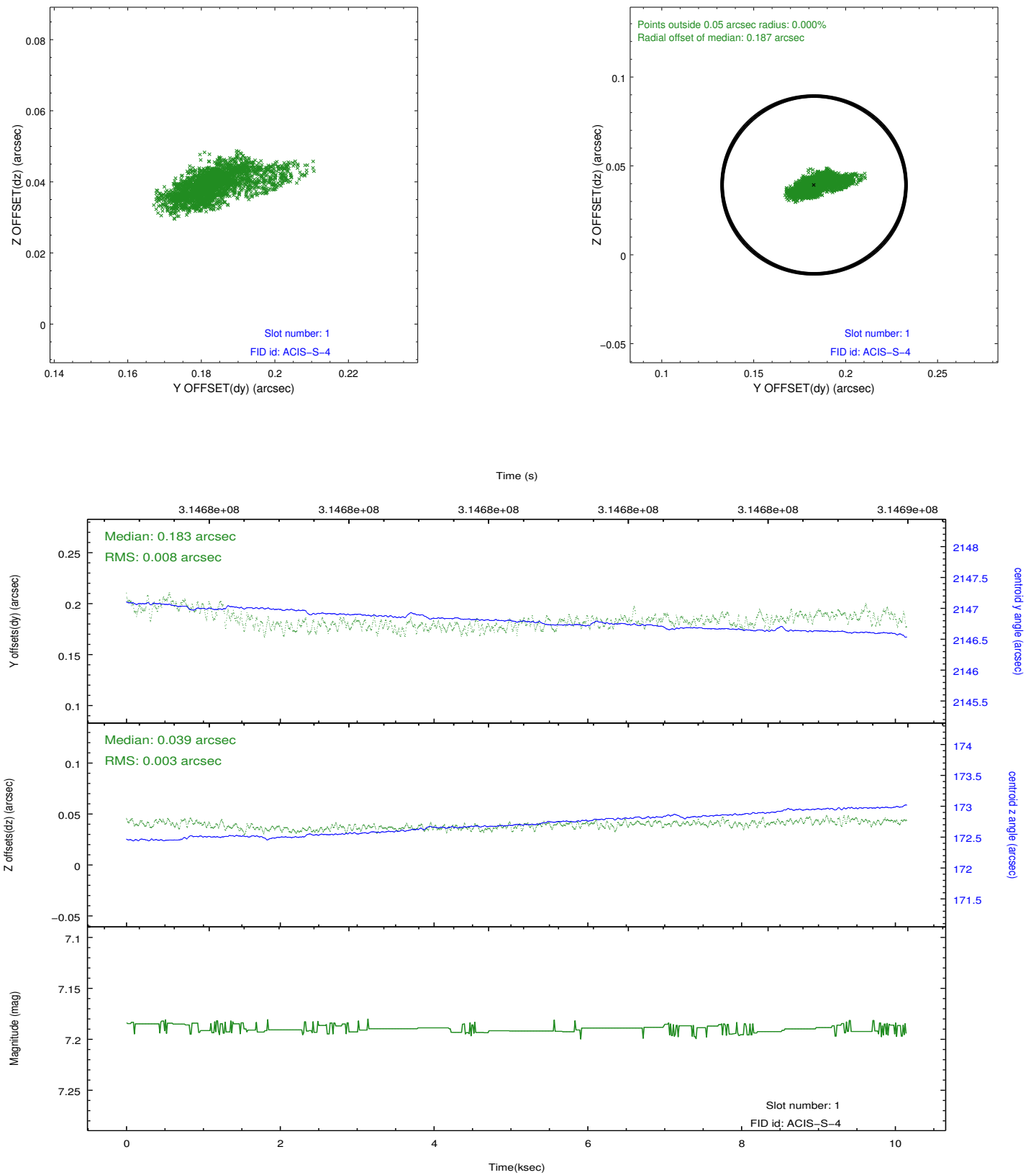


2.5 FID Slots

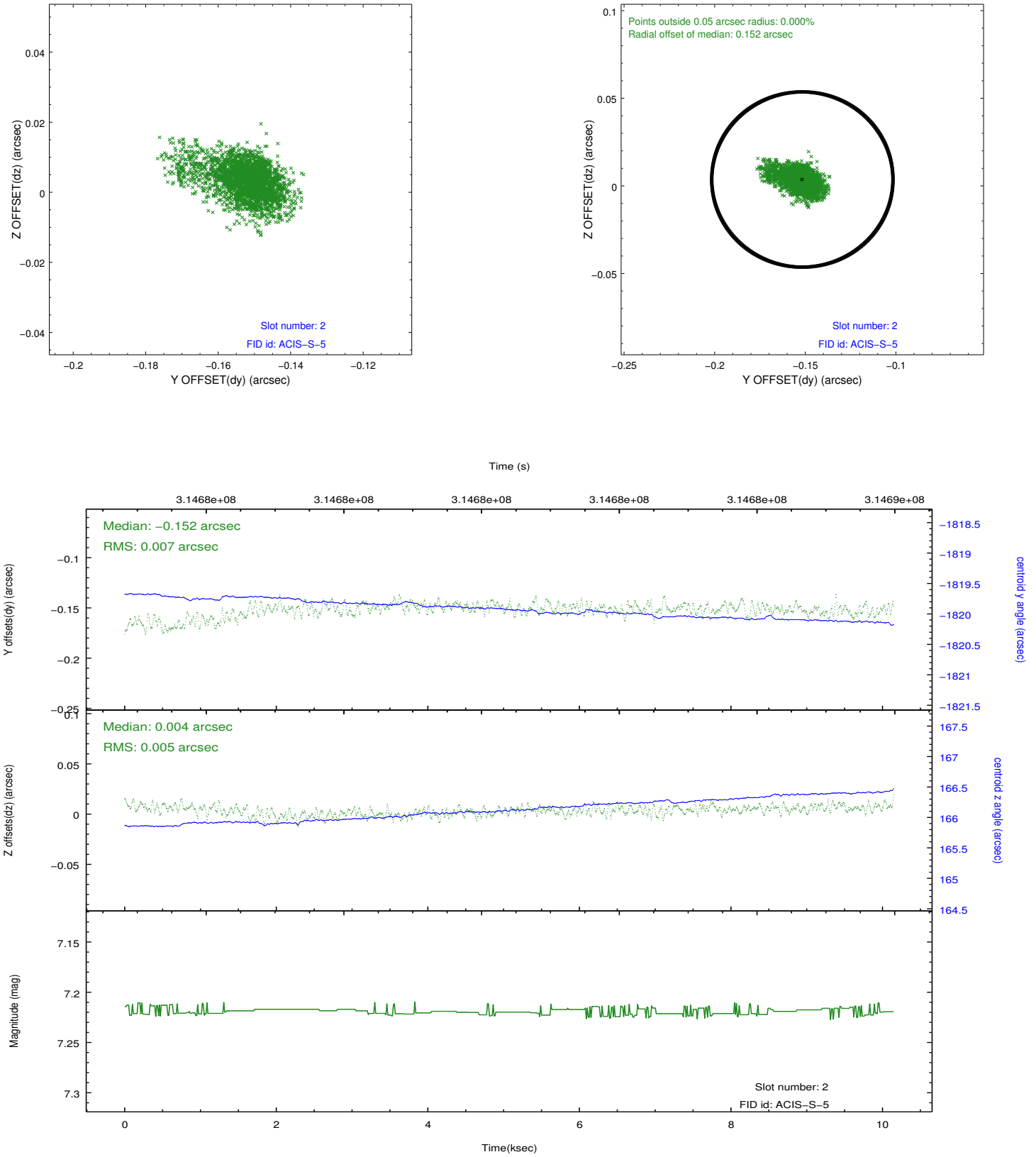
2.5.1 Slot 0



2.5.2 Slot 1



2.5.3 Slot 2



A Summary

A.1 Status

V&V Scientist	Beth Sundheim
V&V Date (YYYY-MM-DD)	2012.05.08
V&V Edition	1
V&V Disposition and Status	OK
V&V Charge Time	10.0831999

A.2 Comments