

V&V Reference Report

L2 ASCDS Version : 8.4.4

Observation 9267 - L2 Version 2
Chandra X-Ray Center

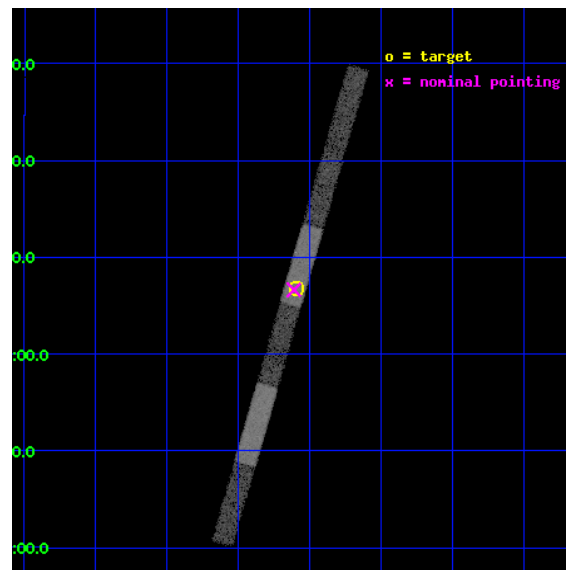
L2 Processing Date : May 9 2012

Contents

1	Front	2
2	OBI	3
2.1	OBI	3
2.1.1	Images	3
2.1.2	Bias	3
2.1.3	Parameters	4
2.1.4	Events	4
2.2	Compared Parameters	5
2.3	Aspect	6
2.4	Star Slots	9
2.4.1	Slot 3	9
2.4.2	Slot 4	10
2.4.3	Slot 5	11
2.4.4	Slot 6	12
2.4.5	Slot 7	13
2.5	FID Slots	14
2.5.1	Slot 0	14
2.5.2	Slot 1	15
2.5.3	Slot 2	16
A	Summary	17
A.1	Status	17
A.2	Comments	17

1 Front

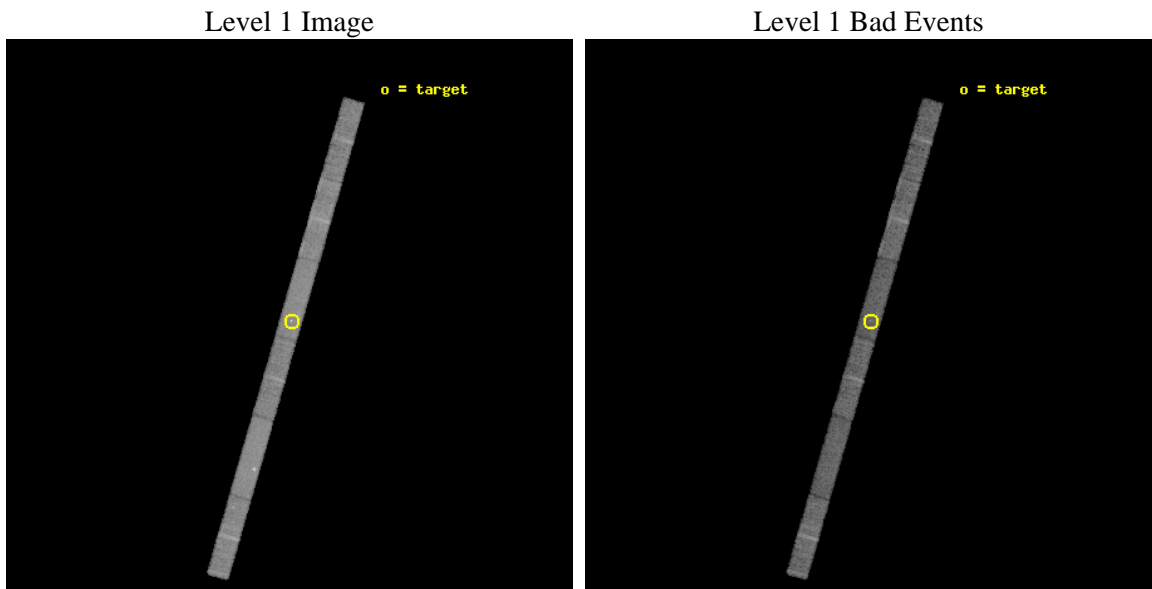
seq_num	701708	Sequence number
obs_id	9267	Observation id
title	Short-time monitoring of extreme spectral variations in Seyfert 2s	
observer	Dr Guido Risaliti	Principal investigator
object	UGC 4203	Source name
dtcycle	0	
cycle	P	events from which exps? Prim/Second/Both
ra_targ	121.024167	Observer's specified target RA [deg]
dec_targ	5.113889	Observer's specified target Dec [deg]
ra_nom	121.02783828773	Nominal RA [deg]
dec_nom	5.1106367852502	Nominal Dec [deg]
roll_nom	286.15630770103	Nominal Roll [deg]
revision	2	Processing version of data
ontime	10161.800220251	Sum of GTIs [s]
livetime	9796.3088430521	Livetime [s]
ontime4	10161.800220251	Sum of GTIs [s]
ontime5	10161.800220251	Sum of GTIs [s]
ontime6	10161.800220251	Sum of GTIs [s]
ontime7	10161.800220251	Sum of GTIs [s]
ontime8	10161.800220251	Sum of GTIs [s]
ontime9	10161.800220251	Sum of GTIs [s]
l2events	45514	Number of level 2 events



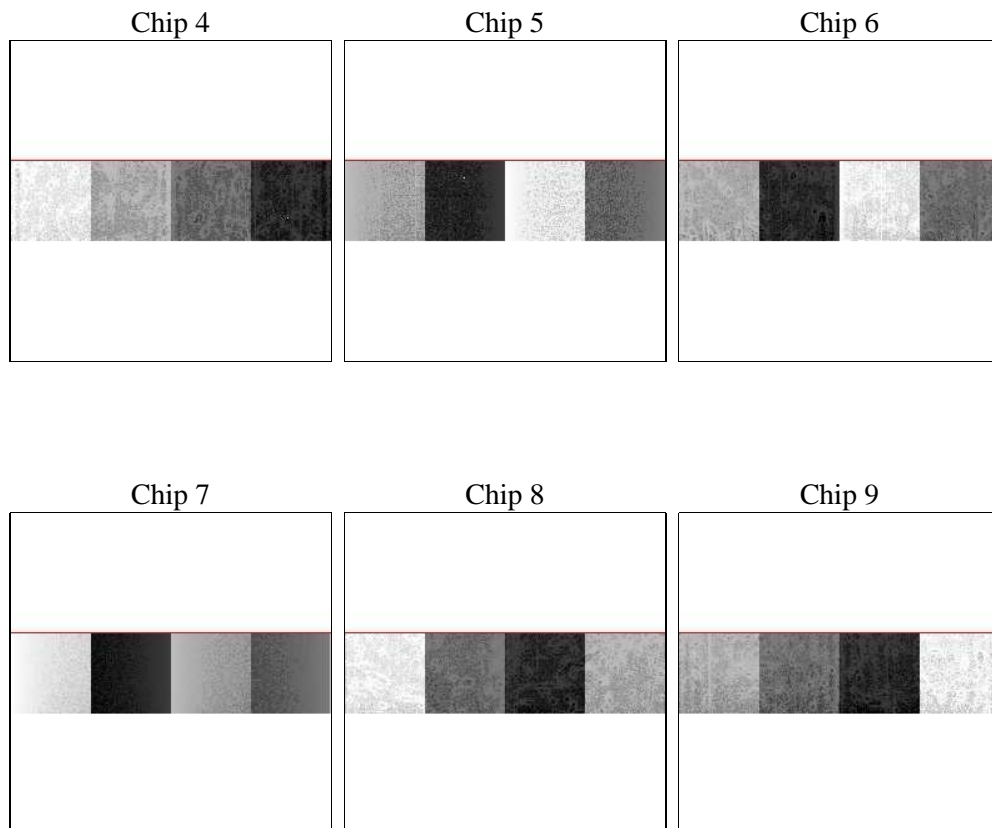
2 OBI

2.1 OBI

2.1.1 Images



2.1.2 Bias



2.1.3 Parameters

obi_num	1	Obi number	sched_exp_time	10000.000000	[s] Scheduled observation exposure time
ascdsver	8.4.4	Processing system revision	ontime	10161.800220251	Sum of GTIs [s]
caldsver	4.4.9	 	ontime4	10161.800220251	Sum of GTIs [s]
date	2012-05-09T19:26:34	Date and time of file creation	ontime5	10161.800220251	Sum of GTIs [s]
revision	2	Processing version of data	ontime6	10161.800220251	Sum of GTIs [s]
			ontime7	10161.800220251	Sum of GTIs [s]
			ontime8	10161.800220251	Sum of GTIs [s]
			ontime9	10161.800220251	Sum of GTIs [s]
			l1events	207399	Number of level 1 events

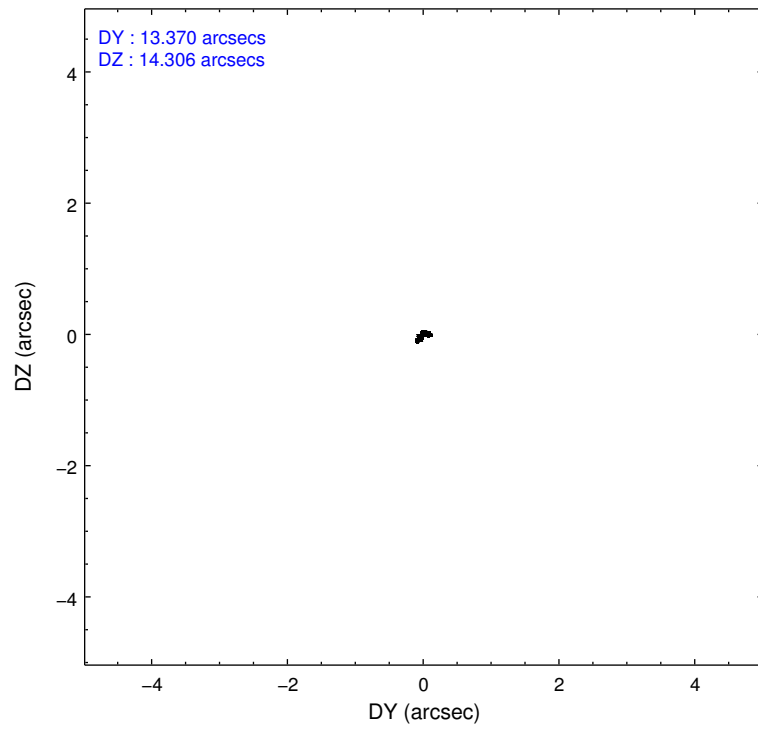
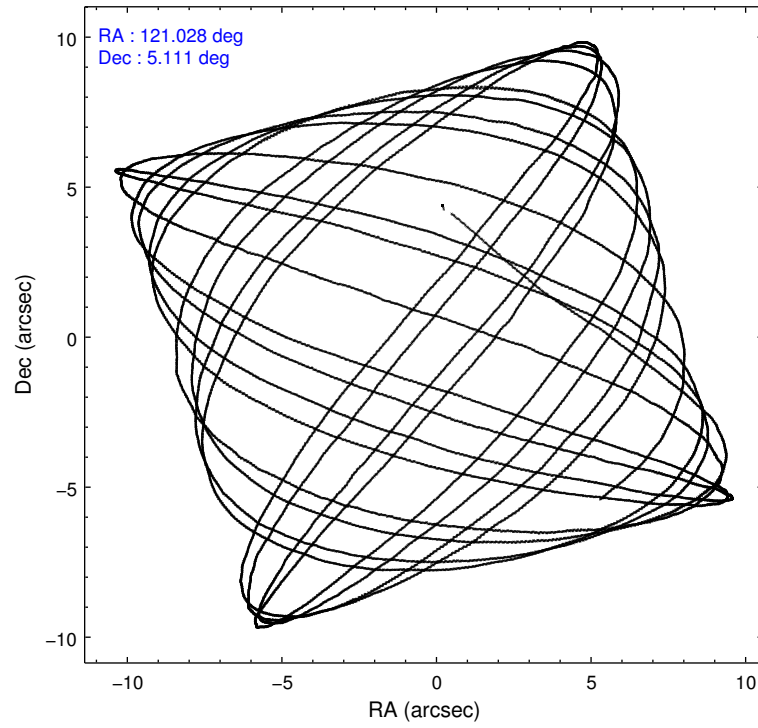
2.1.4 Events

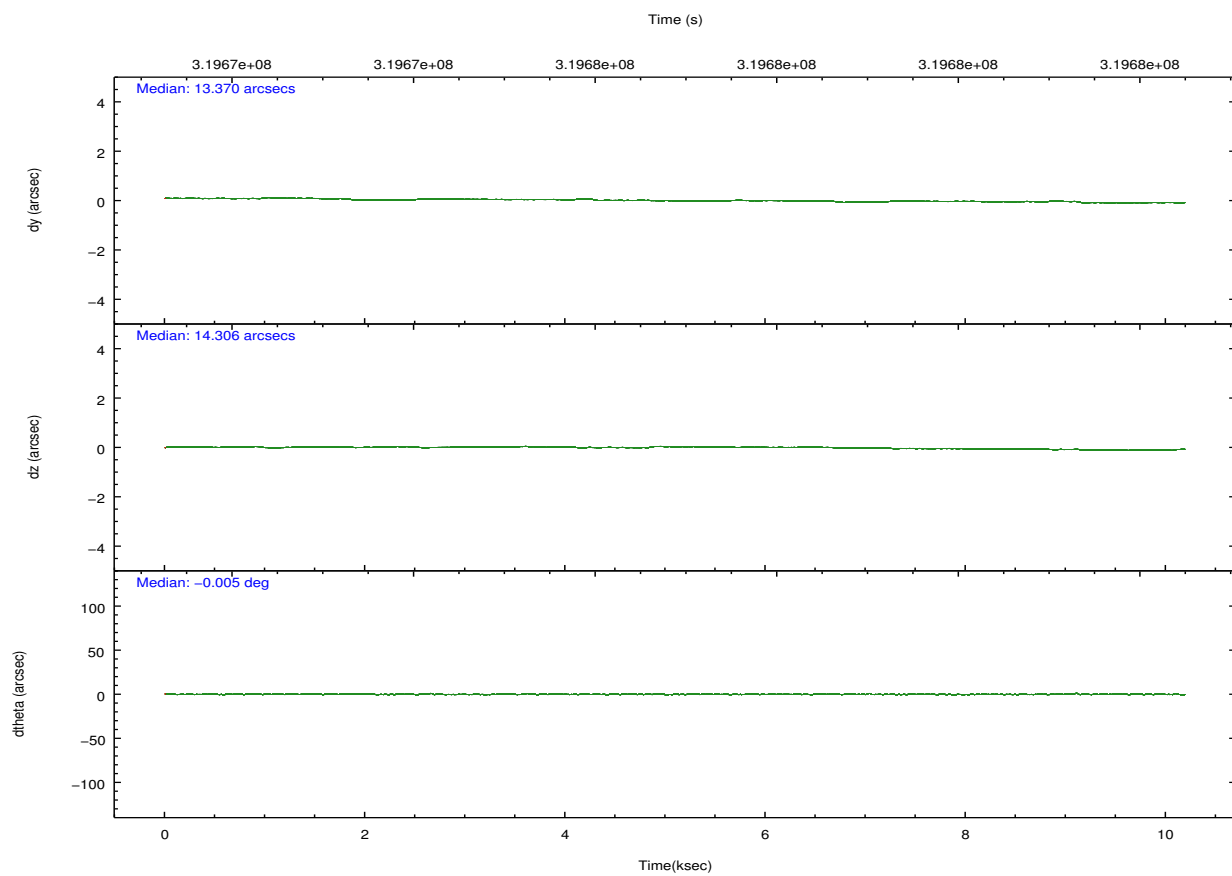
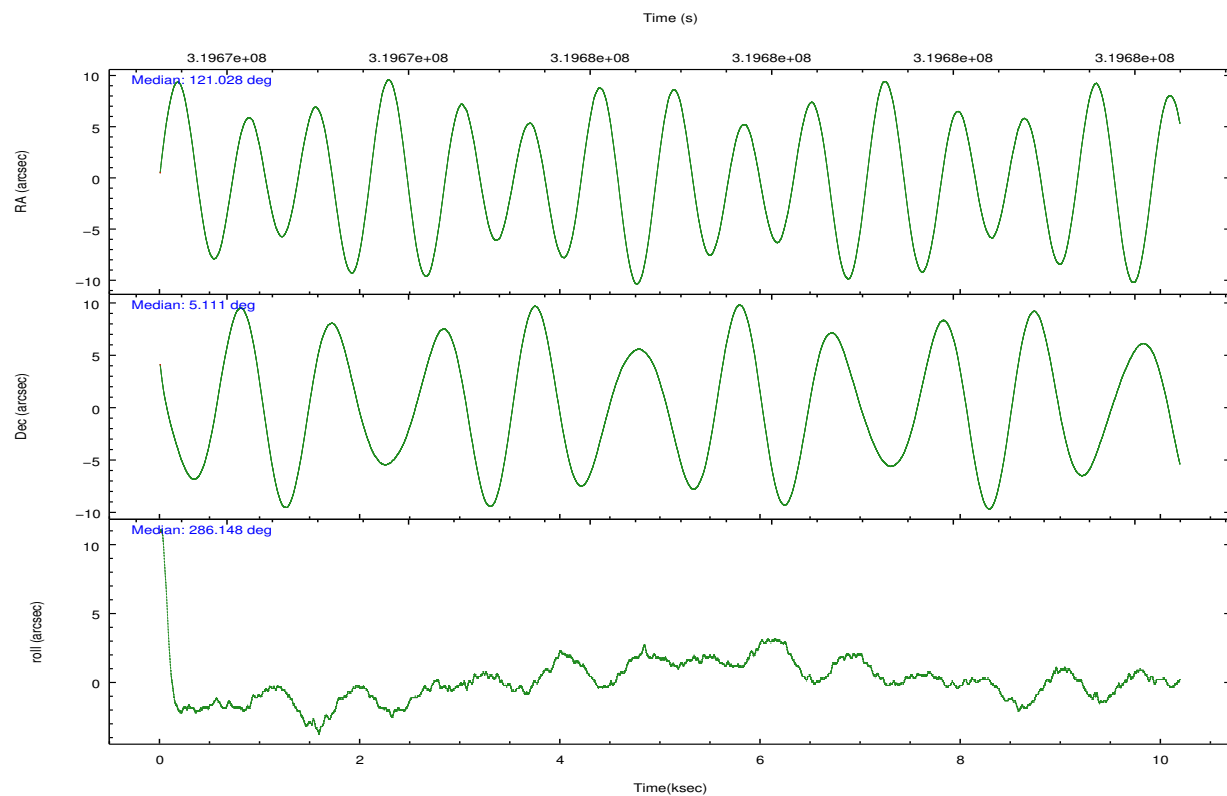
	ccd 4	ccd 5	ccd 6	ccd 7	ccd 8	ccd 9		ccd 4	ccd 5	ccd 6	ccd 7	ccd 8	ccd 9
level 1 events	33990	39898	28846	38416	38700	27549	grade 0 events	1691	2544	1179	2024	2199	1273
rejected events	30083	21294	25525	20794	30677	24203		4%	6%	4%	5%	5%	4%
rejected %	88%	53%	88%	54%	79%	87%	grade 1 events	19	58	10	56	18	17
								0%	0%	0%	0%	0%	0%
							grade 2 events	700	5287	695	3768	1718	554
								2%	13%	2%	9%	4%	2%
							grade 3 events	494	841	432	1804	890	459
								1%	2%	1%	4%	2%	1%
							grade 4 events	461	779	396	1761	843	433
								1%	1%	1%	4%	2%	1%
							grade 5 events	1239	2921	1229	3391	1597	1227
								3%	7%	4%	8%	4%	4%
							grade 6 events	563	9157	619	8268	2425	629
								1%	22%	2%	21%	6%	2%
							grade 7 events	28823	18311	24286	17344	29010	22957
								84%	45%	84%	45%	74%	83%

2.2 Compared Parameters

Parameter	Planned	Actual	Parameter	Planned	Actual
Instrument	ACIS	ACIS	Obspar format version number	7	7
Detector	ACIS-456789	ACIS-456789	Obspar file type	PREDICTED	ACTUAL
Grating	NONE	NONE	Obspar update status	NONE	UPDATED
Data mode	FAINT	FAINT	CCD I0 on	N	N
Observation mode	POINTING	POINTING	CCD I1 on	N	N
[deg] Pointing RA	121.007715	121.0278382877253	CCD I2 on	N	N
[deg] Pointing Dec	5.129310	5.110636785250236	CCD I3 on	N	N
[deg] Pointing Roll	286.001469	286.1563077010292	CCD S0 on	O1	Y
[mm] SIM focus pos	-0.684267	-0.6828225247311905	CCD S1 on	Y	Y
[mm] SIM defocus	0	0.001444936568705701	CCD S2 on	Y	Y
[mm] SIM translation stage pos	-190.132523	-190.1400660498719	CCD S3 on	Y	Y
[mm] SIM translation stage offset	0	0.00754346686406393	CCD S4 on	Y	Y
[s] Observation start time (MET)	319671971.184000	319671203.99104	CCD S5 on	O2	Y
Observation start date	2008-02-17T21:45:06	2008-02-17T21:33:23	Number of optional ACIS chips dropped	0	0
[s] Observation end time (MET)	319681971.184000	319683470.67914	On-chip summing requested	N	N
Observation end date	2008-02-18T00:31:46	2008-02-18T00:57:50	Subarray requested	CUSTOM	1/4
Read mode	TIMED	TIMED	Subarray start row	385	385
			Subarray row count	256	256
			Alternating exposures requested	N	N
			[s] Primary exposure time	0.000000	1.1

2.3 Aspect



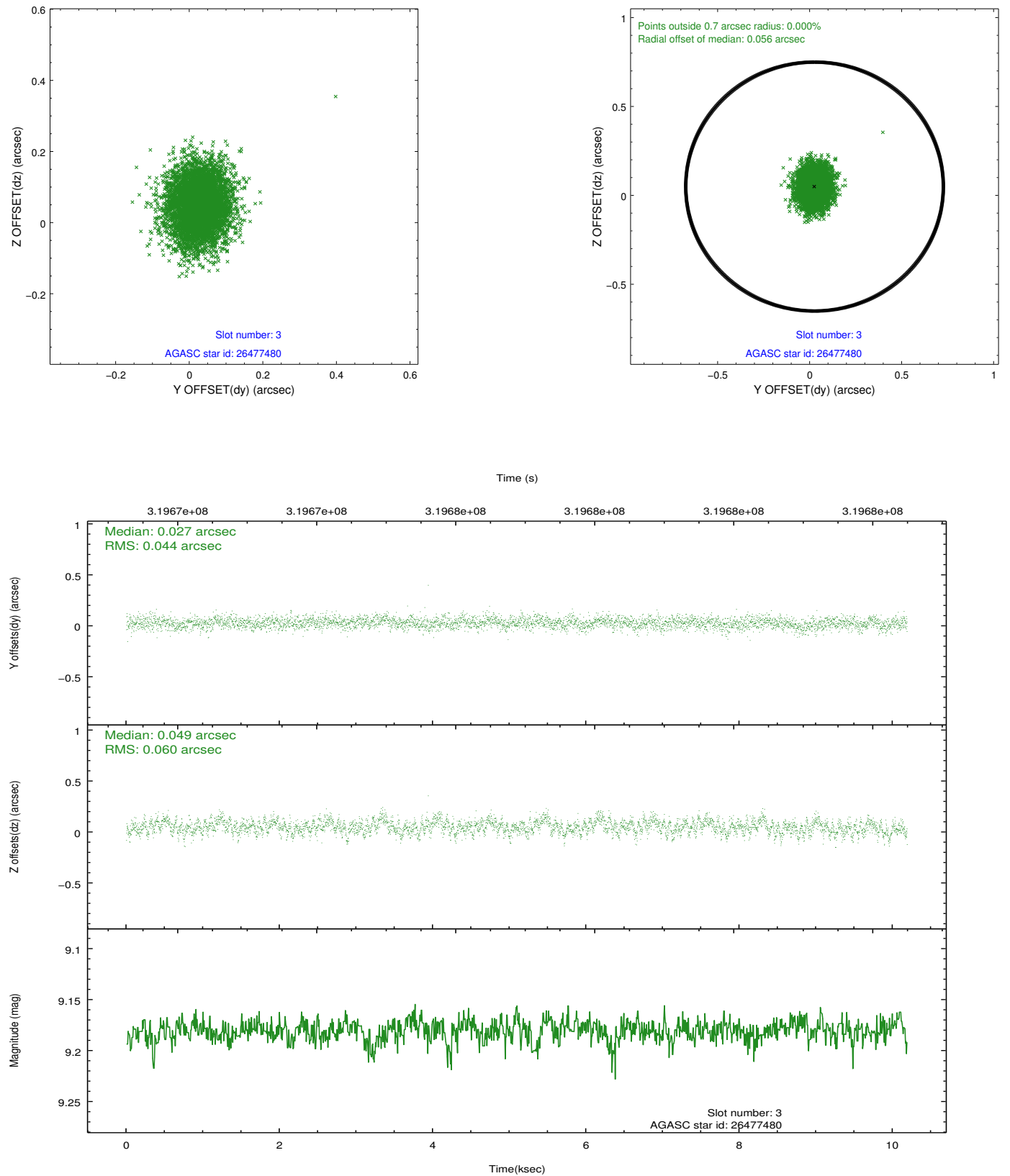


Slot Statistics

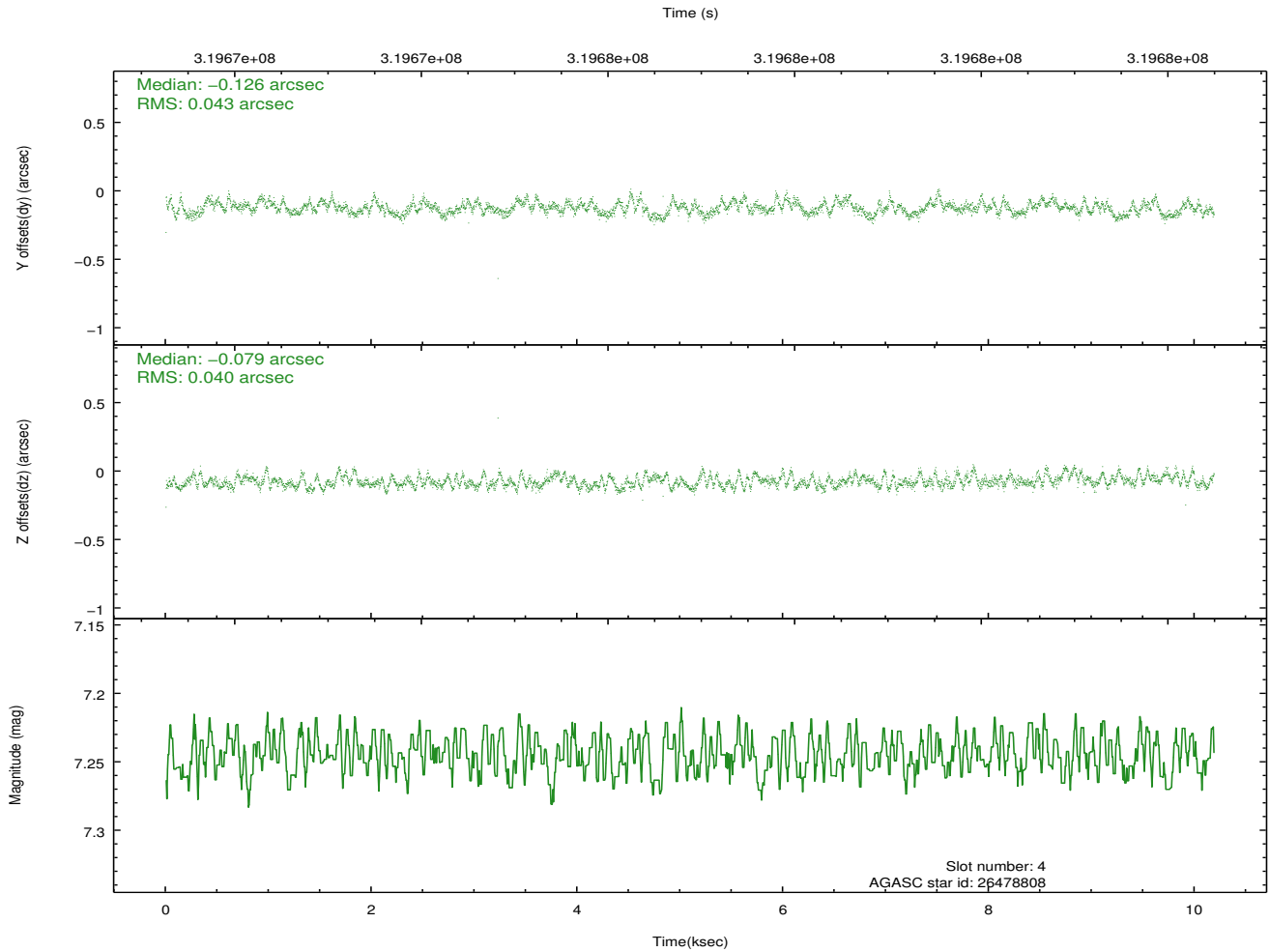
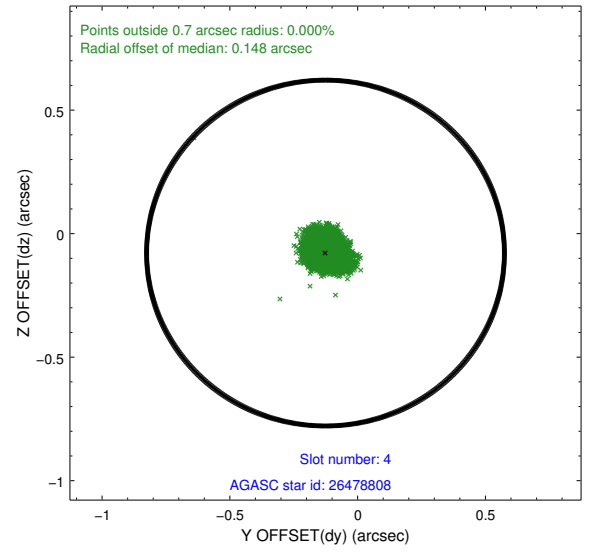
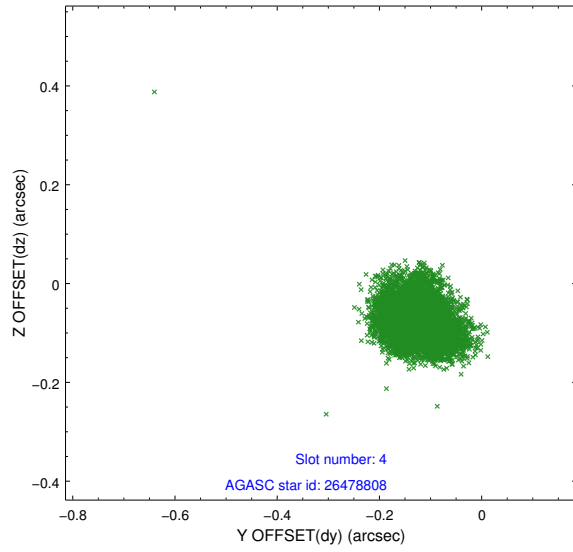
slot	status	id	mag	n_pts	med_dy	med_dz	dr1	dr2	ra	dec	mean_y	mean_z
0	FID	ACIS-S-2	7.09	2486	-0.051	-0.040	0.008	0.016	0.000000	0.000000	-766.33	-1735.70
1	FID	ACIS-S-4	7.19	2486	0.170	0.035	0.008	0.014	0.000000	0.000000	2146.91	172.35
2	FID	ACIS-S-5	7.22	2486	-0.150	0.014	0.009	0.017	0.000000	0.000000	-1818.63	166.55
3	GUIDE	26477480	9.18	4966	0.027	0.049	0.078	0.130	120.719802	5.482207	-1505.62	-641.57
4	GUIDE	26478808	7.25	4971	-0.126	-0.079	0.063	0.097	121.530150	5.559485	-974.02	2226.31
5	GUIDE	26479112	8.92	4967	-0.034	0.000	0.079	0.129	121.440982	5.412421	-552.55	1774.24
6	GUIDE	26487192	6.90	4971	0.032	-0.128	0.067	0.108	120.481632	4.541449	1513.59	-2397.50
7	GUIDE	26487640	8.93	4963	0.097	0.155	0.083	0.134	121.326715	5.418691	-686.18	1385.88

2.4 Star Slots

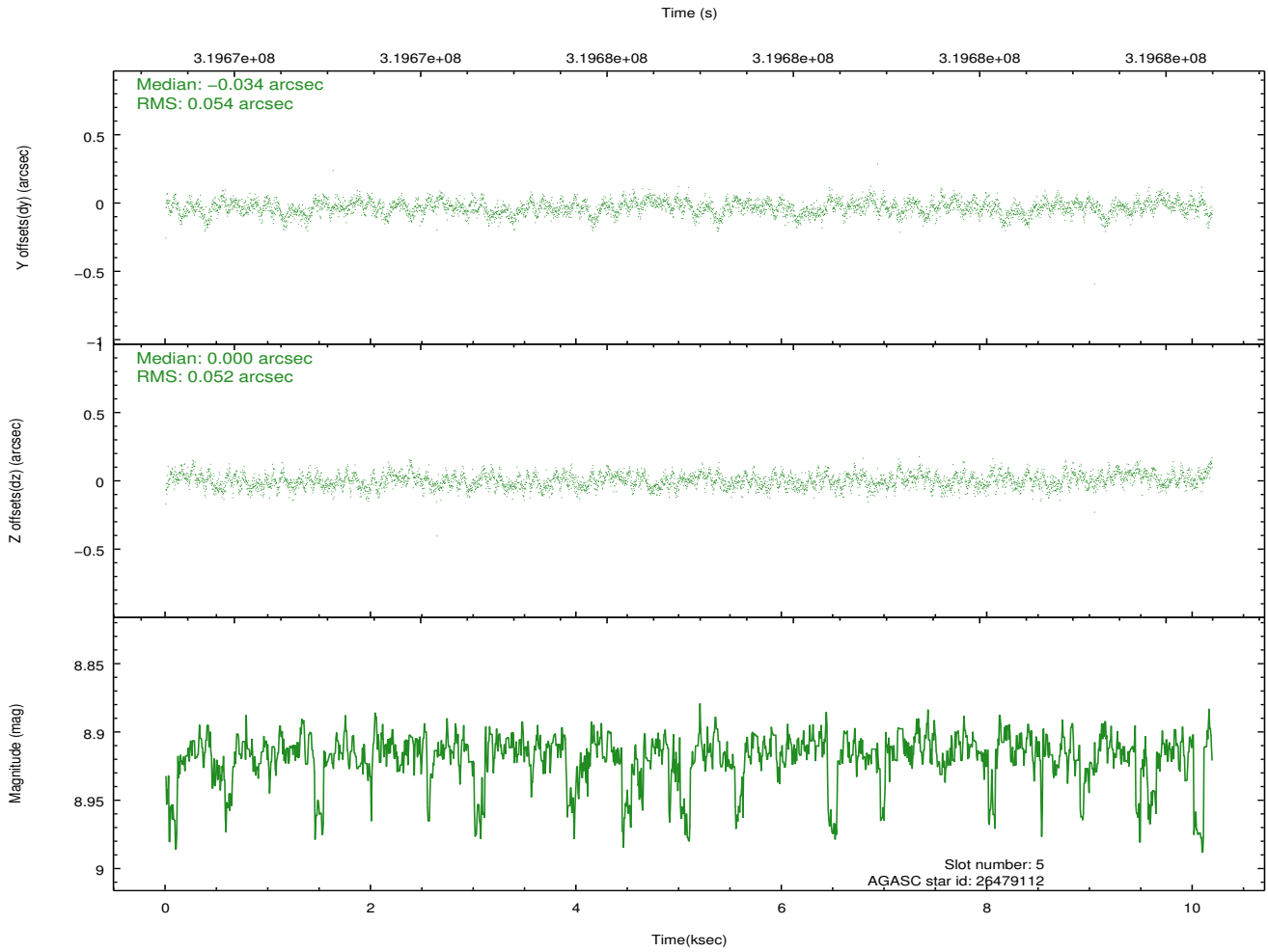
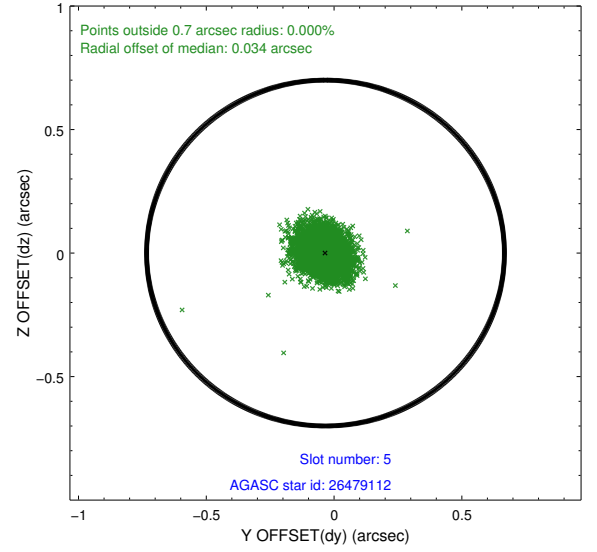
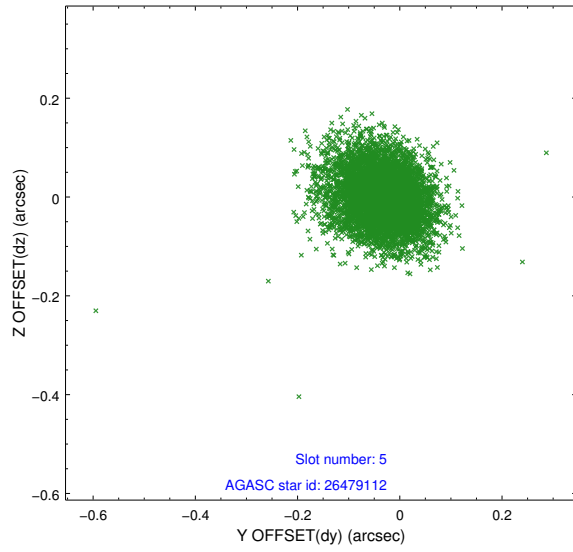
2.4.1 Slot 3



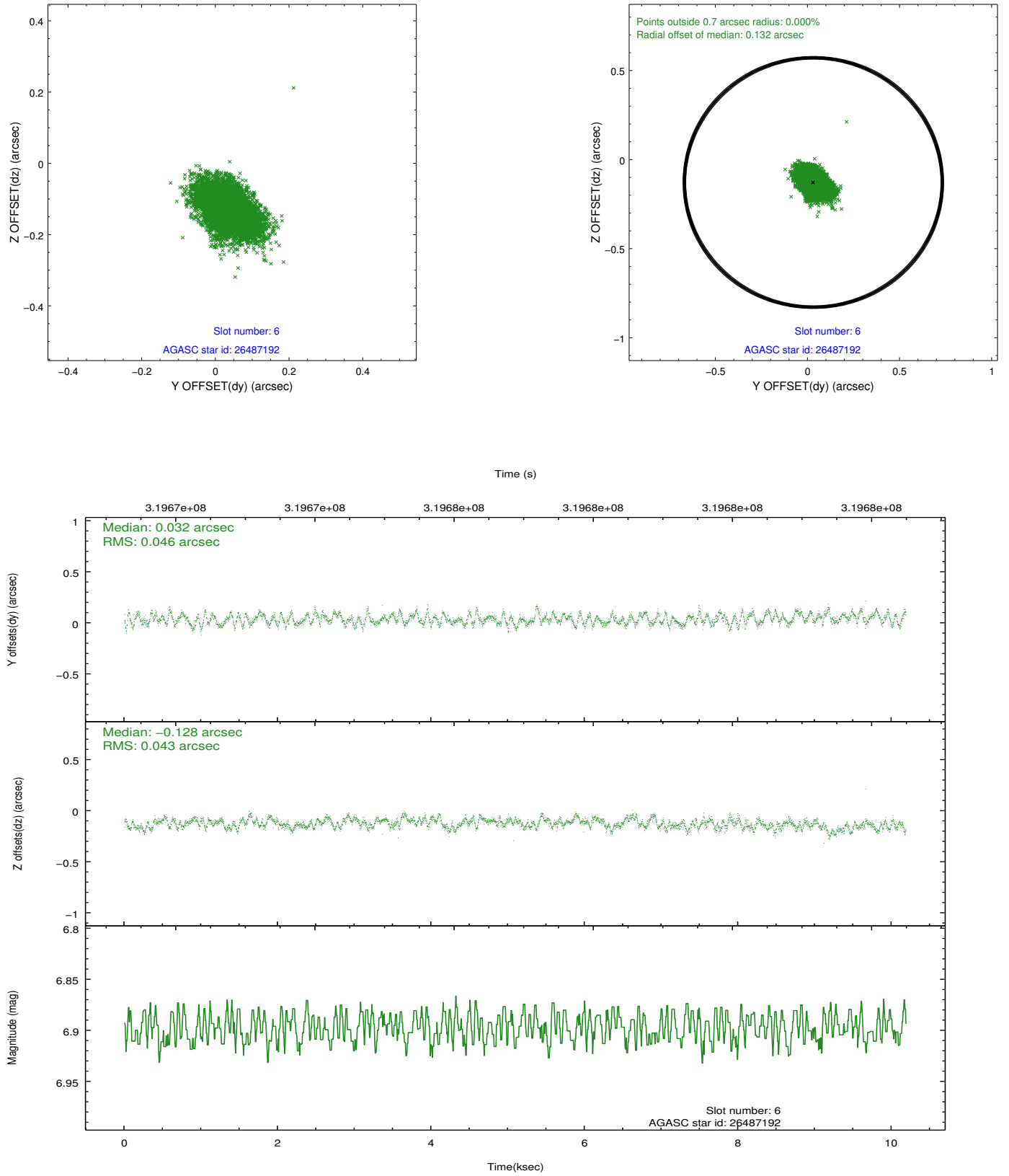
2.4.2 Slot 4



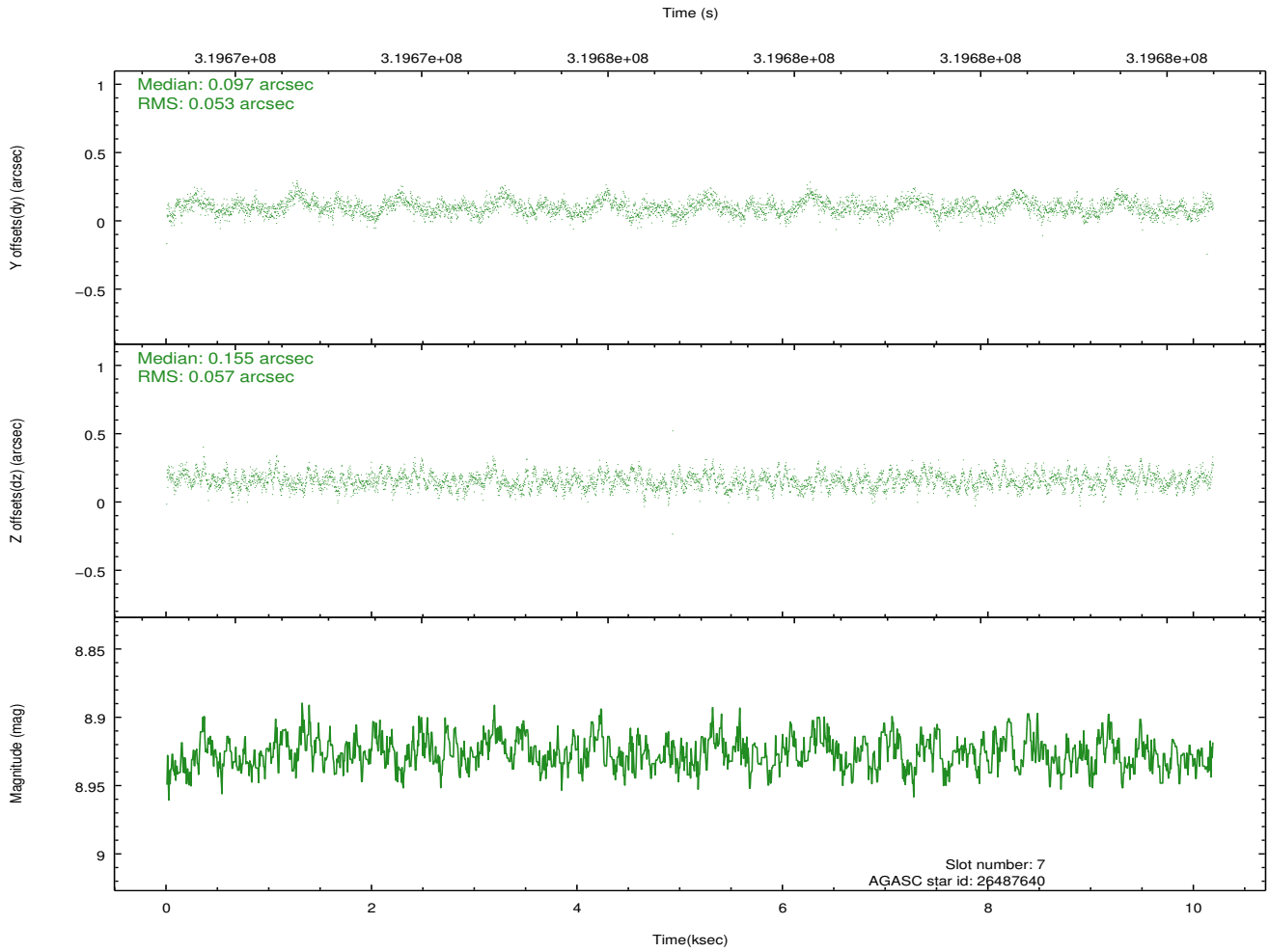
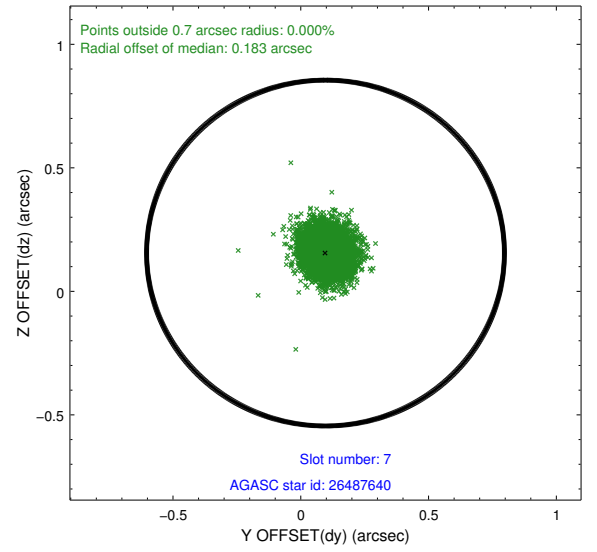
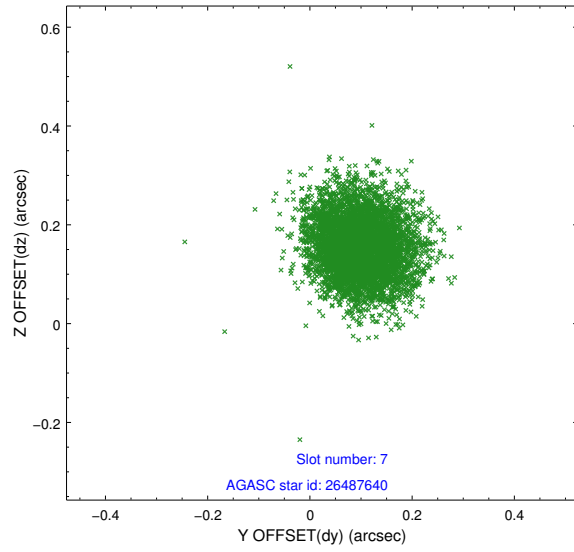
2.4.3 Slot 5



2.4.4 Slot 6

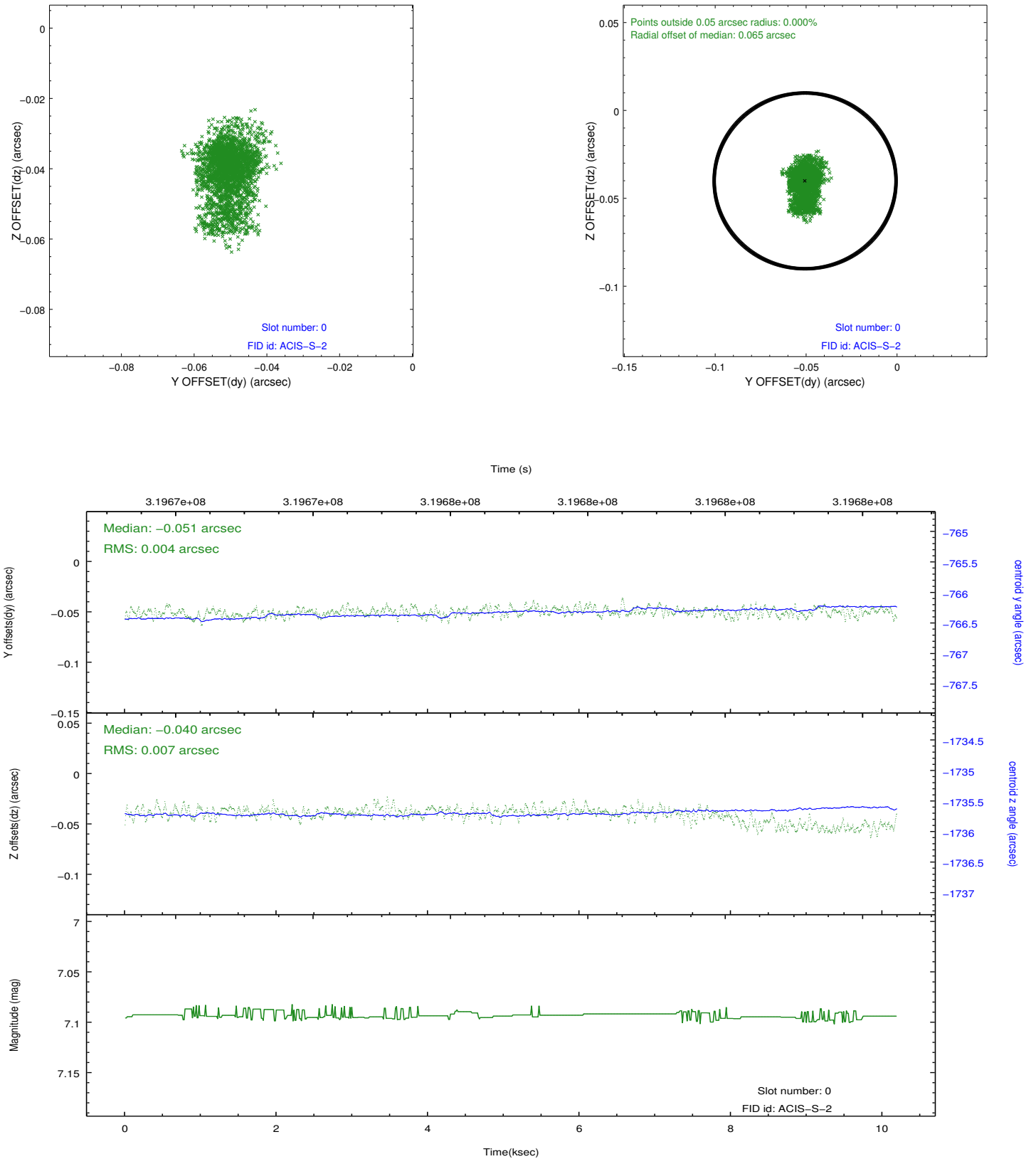


2.4.5 Slot 7

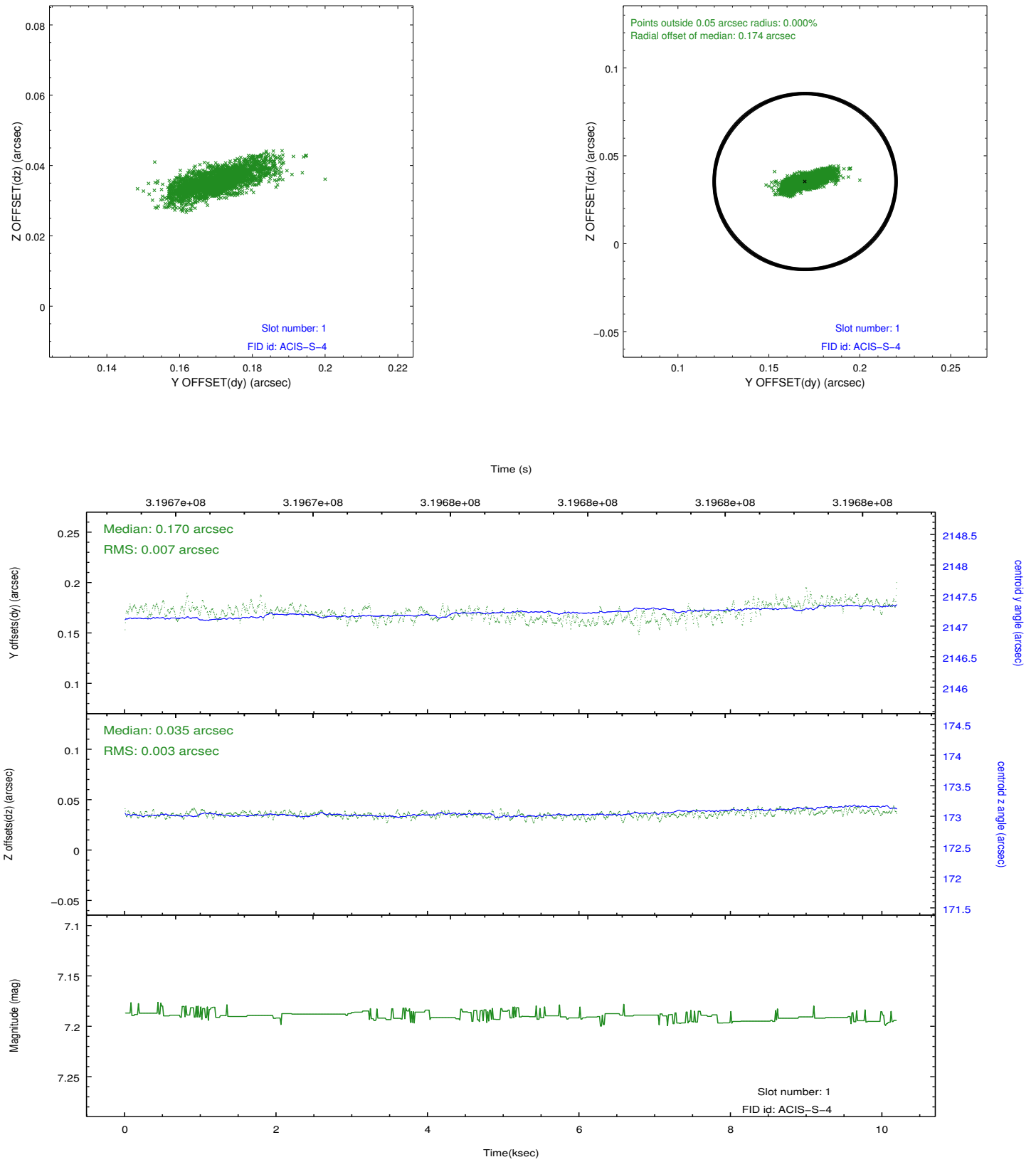


2.5 FID Slots

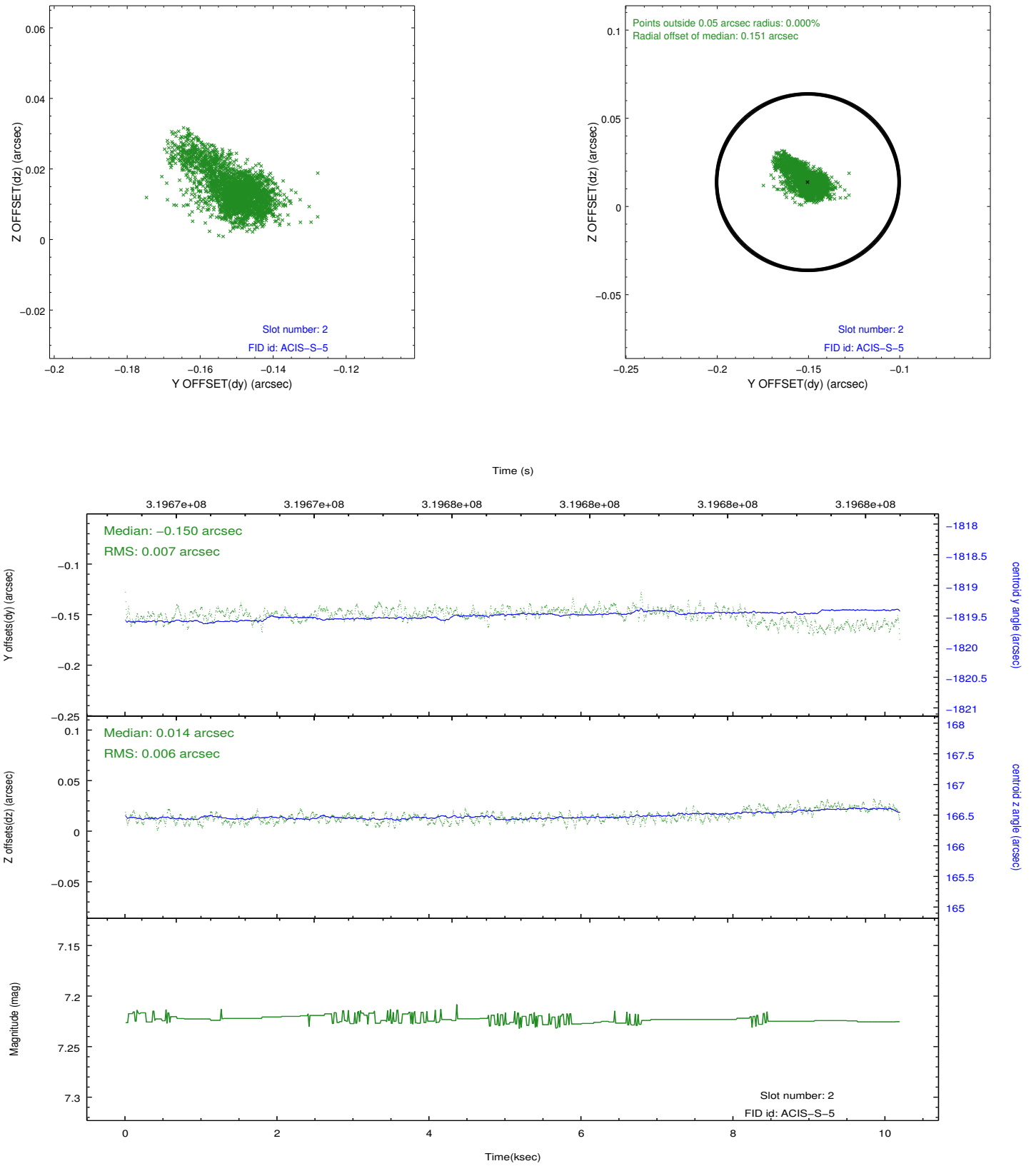
2.5.1 Slot 0



2.5.2 Slot 1



2.5.3 Slot 2



A Summary

A.1 Status

V&V Scientist	Jen Lauer
V&V Date (YYYY-MM-DD)	2012.05.11
V&V Edition	1
V&V Disposition and Status	OK
V&V Charge Time	10.1618002

A.2 Comments