

V&V Reference Report

L2 ASCDS Version : 8.4.4

Observation 9265 - L2 Version 2
Chandra X-Ray Center

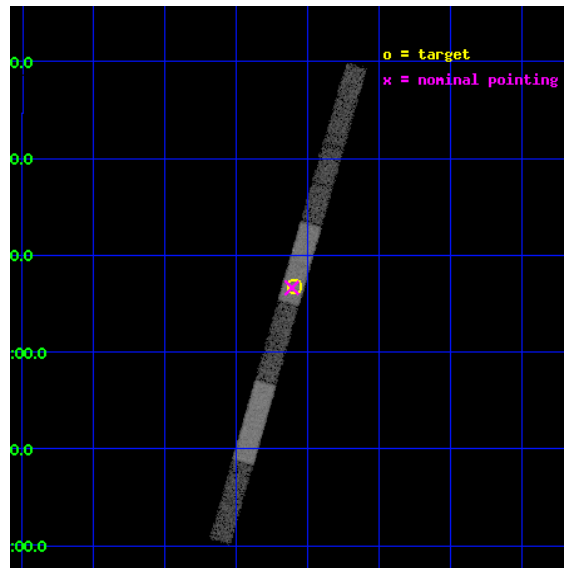
L2 Processing Date : May 9 2012

Contents

1	Front	2
2	OBI	3
2.1	OBI	3
2.1.1	Images	3
2.1.2	Bias	3
2.1.3	Parameters	4
2.1.4	Events	4
2.2	Compared Parameters	5
2.3	Aspect	6
2.4	Star Slots	9
2.4.1	Slot 3	9
2.4.2	Slot 4	10
2.4.3	Slot 5	11
2.4.4	Slot 6	12
2.4.5	Slot 7	13
2.5	FID Slots	14
2.5.1	Slot 0	14
2.5.2	Slot 1	15
2.5.3	Slot 2	16
A	Summary	17
A.1	Status	17
A.2	Comments	17

1 Front

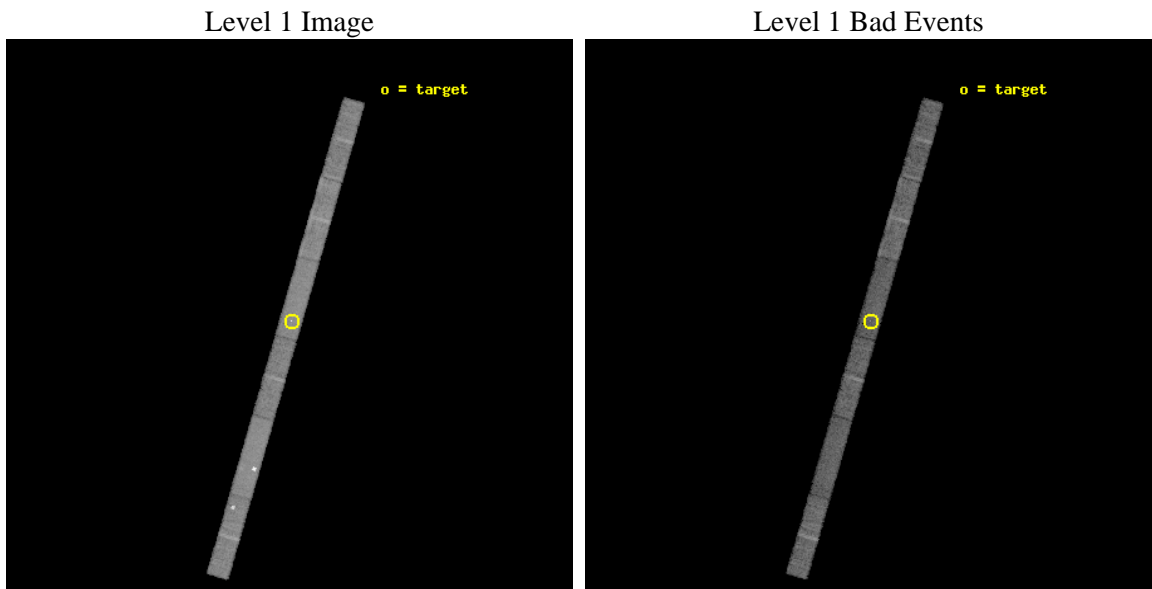
seq_num	701706	Sequence number
obs_id	9265	Observation id
title	Short-time monitoring of extreme spectral variations in Seyfert 2s	
observer	Dr Guido Risaliti	Principal investigator
object	UGC 4203	Source name
dtcycle	0	
cycle	P	events from which exps? Prim/Second/Both
ra_targ	121.024167	Observer's specified target RA [deg]
dec_targ	5.113889	Observer's specified target Dec [deg]
ra_nom	121.02781682488	Nominal RA [deg]
dec_nom	5.1106447227654	Nominal Dec [deg]
roll_nom	286.15630892244	Nominal Roll [deg]
revision	2	Processing version of data
ontime	9763.4192278385	Sum of GTIs [s]
livetime	9412.256494621	Livetime [s]
ontime4	9763.4602678418	Sum of GTIs [s]
ontime5	9763.3781878352	Sum of GTIs [s]
ontime6	9763.3371478319	Sum of GTIs [s]
ontime7	9763.4192278385	Sum of GTIs [s]
ontime8	9763.2961078286	Sum of GTIs [s]
ontime9	9763.2550678253	Sum of GTIs [s]
l2events	43889	Number of level 2 events



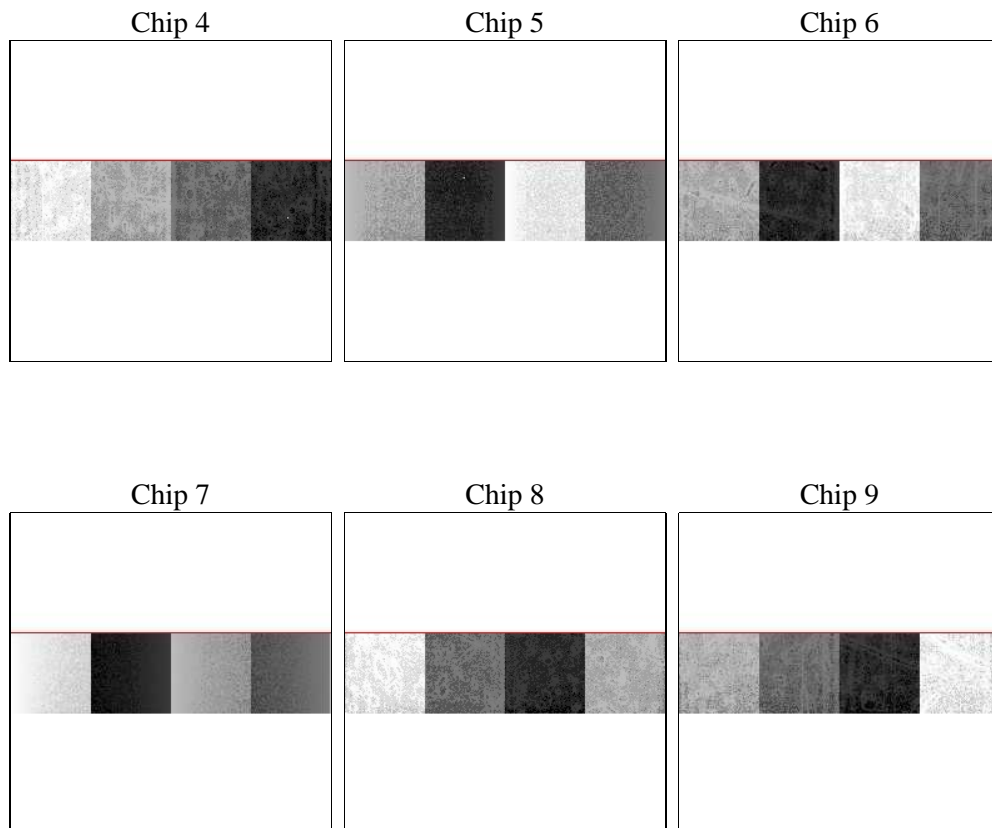
2 OBI

2.1 OBI

2.1.1 Images



2.1.2 Bias



2.1.3 Parameters

obi_num	1	Obi number	sched_exp_time	10000.000000	[s] Scheduled observation exposure time
ascdsver	8.4.4	Processing system revision	ontime	9763.4192278385	Sum of GTIs [s]
caldsver	4.4.9	 	ontime4	9763.4602678418	Sum of GTIs [s]
date	2012-05-09T18:35:34	Date and time of file creation	ontime5	9763.3781878352	Sum of GTIs [s]
revision	2	Processing version of data	ontime6	9763.3371478319	Sum of GTIs [s]
			ontime7	9763.4192278385	Sum of GTIs [s]
			ontime8	9763.2961078286	Sum of GTIs [s]
			ontime9	9763.2550678253	Sum of GTIs [s]
			l1events	205122	Number of level 1 events

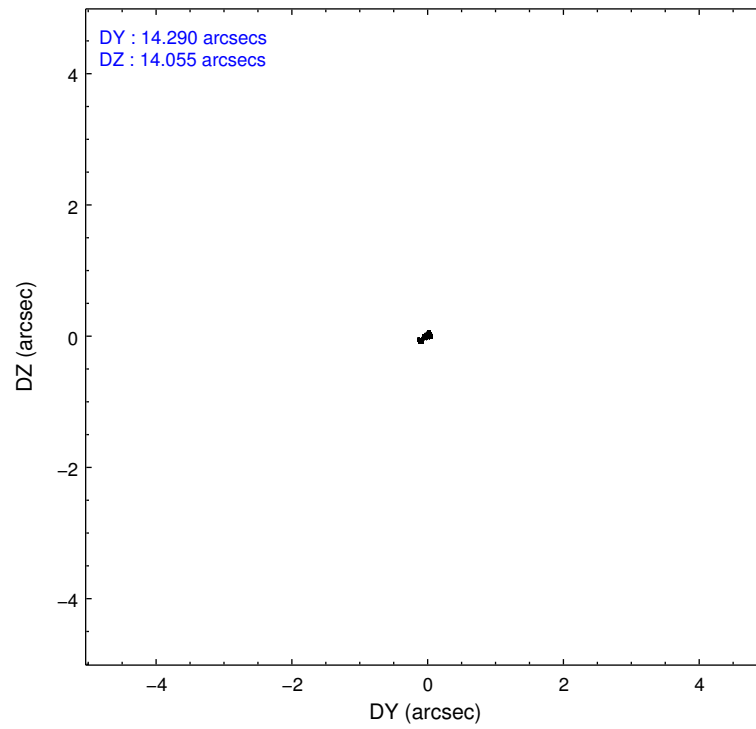
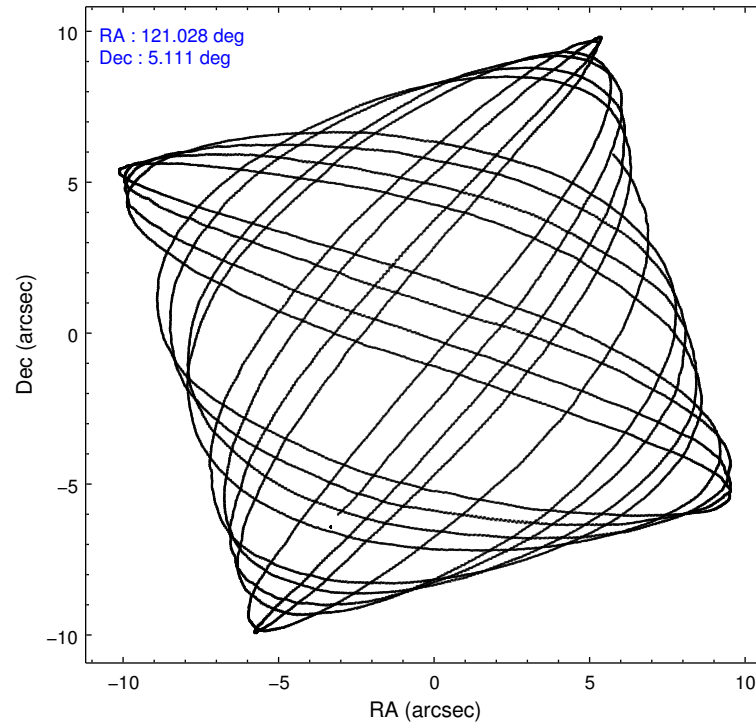
2.1.4 Events

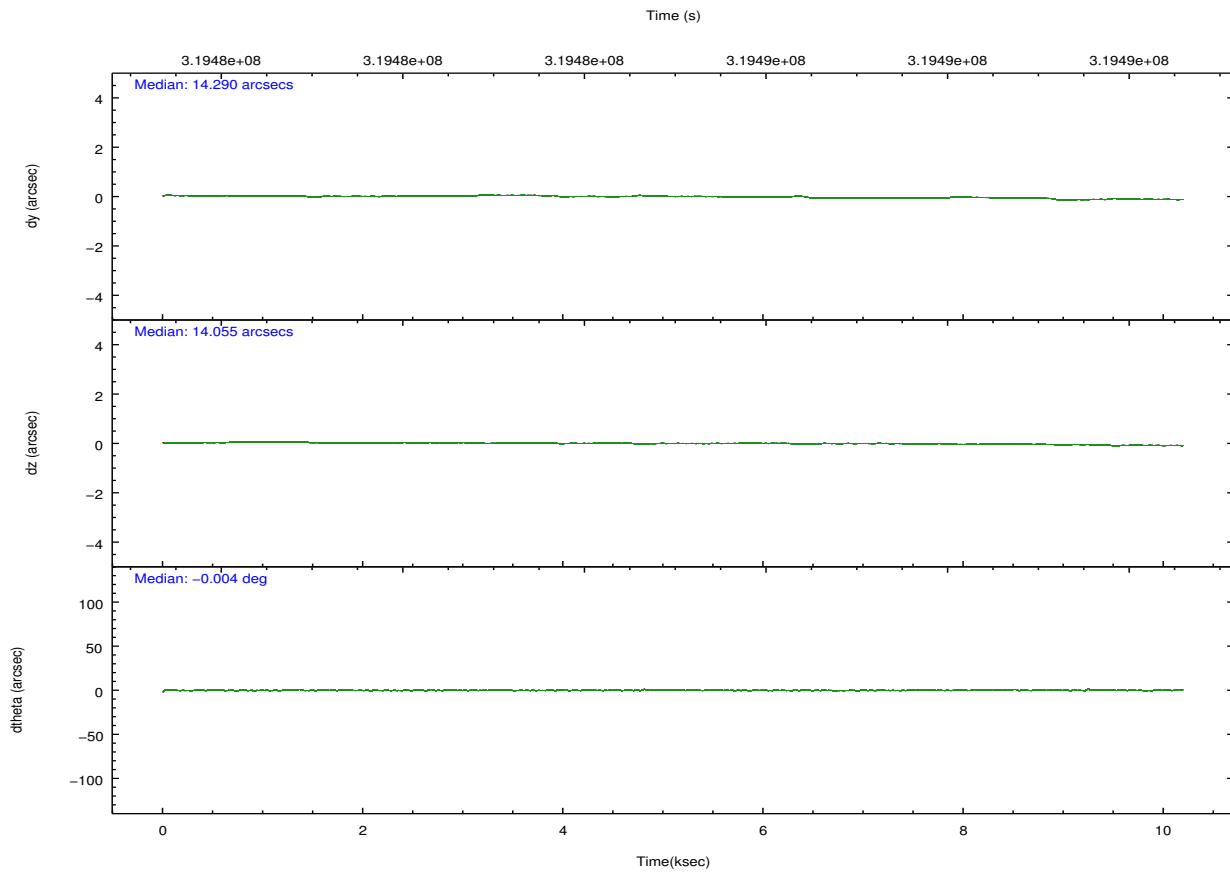
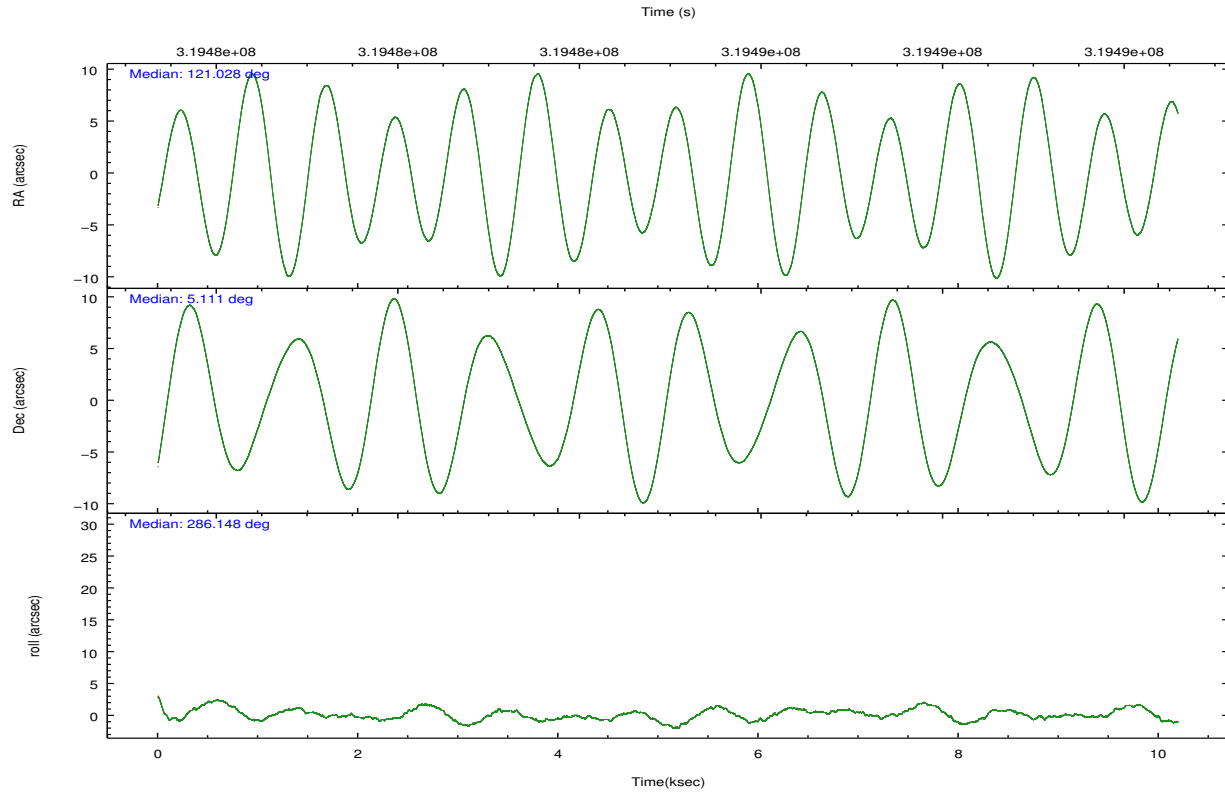
	ccd 4	ccd 5	ccd 6	ccd 7	ccd 8	ccd 9		ccd 4	ccd 5	ccd 6	ccd 7	ccd 8	ccd 9
level 1 events	34013	45385	26561	36183	36506	26474	grade 0 events	4590	9776	1207	1914	2119	1242
rejected events	27351	20000	23102	19504	29194	23280		13%	21%	4%	5%	5%	4%
rejected %	80%	44%	86%	53%	79%	87%	grade 1 events	41	53	12	60	12	10
								0%	0%	0%	0%	0%	0%
							grade 2 events	671	5200	619	3539	1583	580
								1%	11%	2%	9%	4%	2%
							grade 3 events	470	932	459	1656	823	408
								1%	2%	1%	4%	2%	1%
							grade 4 events	427	878	467	1709	754	405
								1%	1%	1%	4%	2%	1%
							grade 5 events	1247	2951	1178	3247	1550	1274
								3%	6%	4%	8%	4%	4%
							grade 6 events	504	8600	707	7861	2034	560
								1%	18%	2%	21%	5%	2%
							grade 7 events	26063	16995	21912	16197	27631	21995
								76%	37%	82%	44%	75%	83%

2.2 Compared Parameters

Parameter	Planned	Actual	Parameter	Planned	Actual
Instrument	ACIS	ACIS	Obspar format version number	7	7
Detector	ACIS-456789	ACIS-456789	Obspar file type	PREDICTED	ACTUAL
Grating	NONE	NONE	Obspar update status	NONE	UPDATED
Data mode	FAINT	FAINT	CCD I0 on	N	N
Observation mode	POINTING	POINTING	CCD I1 on	N	N
[deg] Pointing RA	121.007715	121.0278168248827	CCD I2 on	N	N
[deg] Pointing Dec	5.129310	5.11064472276545	CCD I3 on	N	N
[deg] Pointing Roll	286.001469	286.1563089224354	CCD S0 on	O1	Y
[mm] SIM focus pos	-0.684267	-0.6828225247311905	CCD S1 on	Y	Y
[mm] SIM defocus	0	0.001444936568705701	CCD S2 on	Y	Y
[mm] SIM translation stage pos	-190.132523	-190.1425803651734	CCD S3 on	Y	Y
[mm] SIM translation stage offset	0	0.01005778216563158	CCD S4 on	Y	Y
[s] Observation start time (MET)	319480069.184000	319479692.98175	CCD S5 on	O2	Y
Observation start date	2008-02-15T16:26:44	2008-02-15T16:21:32	Number of optional ACIS chips dropped	0	0
[s] Observation end time (MET)	319490069.184000	319490202.81976	On-chip summing requested	N	N
Observation end date	2008-02-15T19:13:24	2008-02-15T19:16:42	Subarray requested	CUSTOM	1/4
Read mode	TIMED	TIMED	Subarray start row	385	385
			Subarray row count	256	256
			Alternating exposures requested	N	N
			[s] Primary exposure time	0.000000	1.1

2.3 Aspect



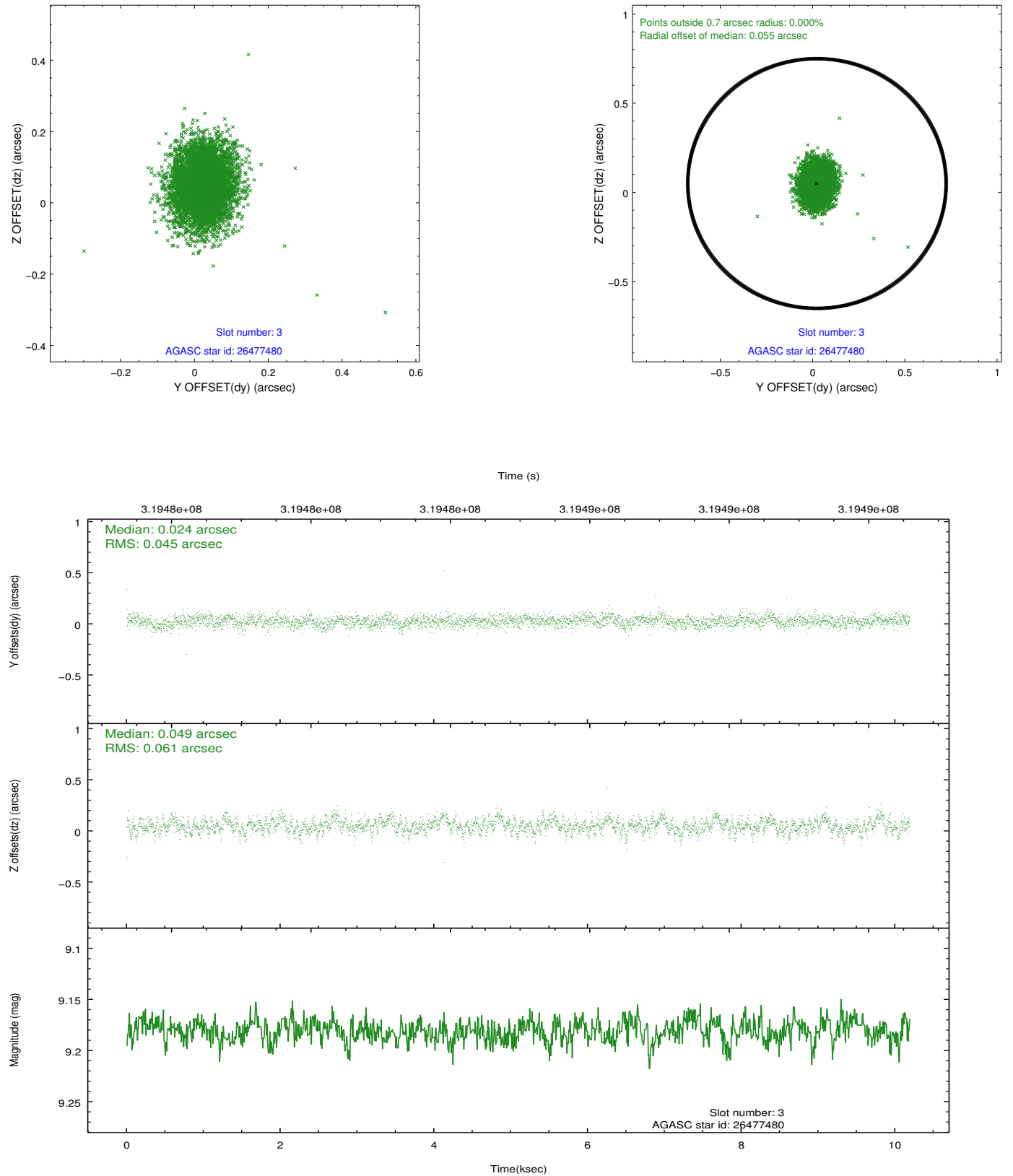


Slot Statistics

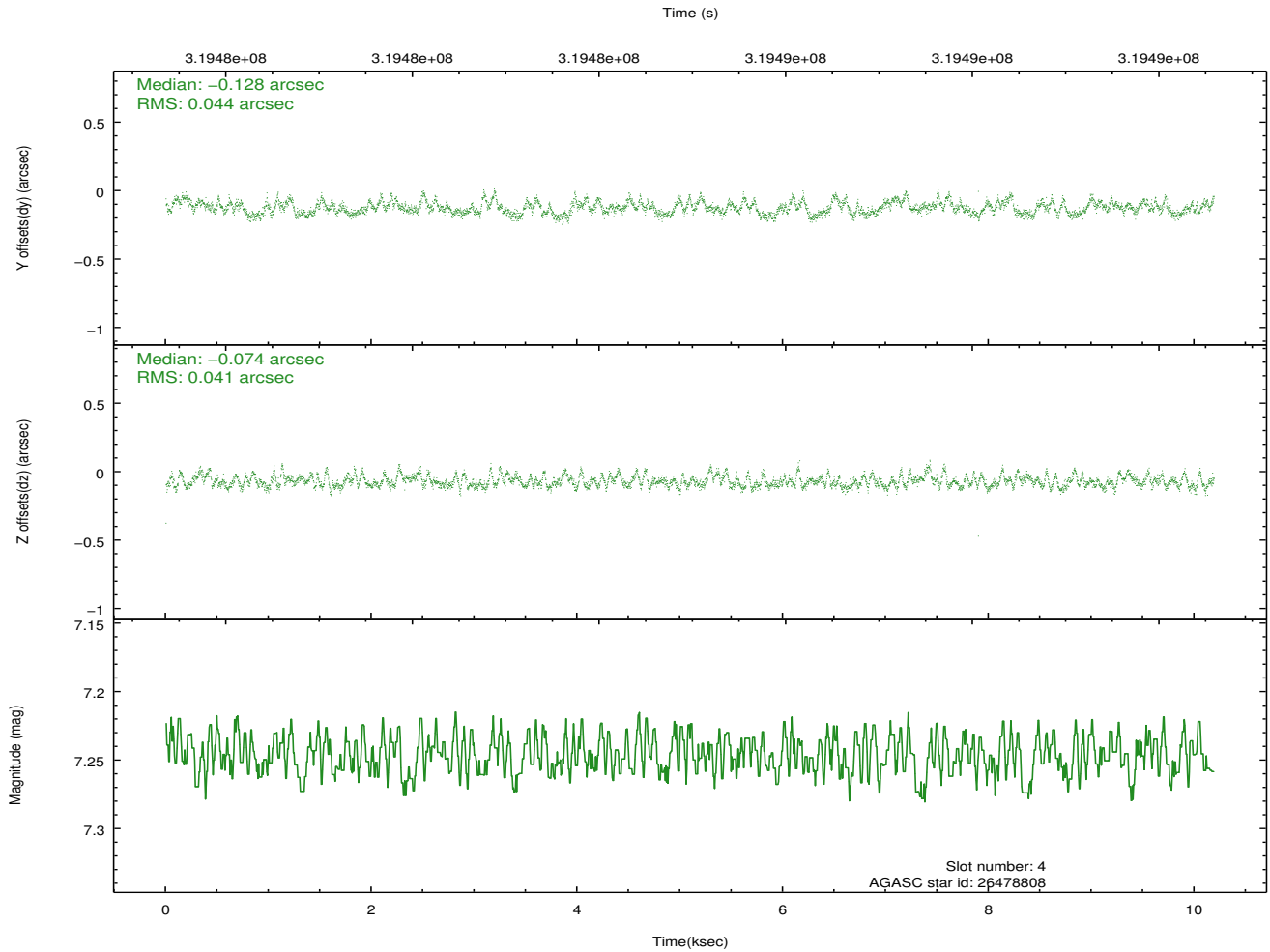
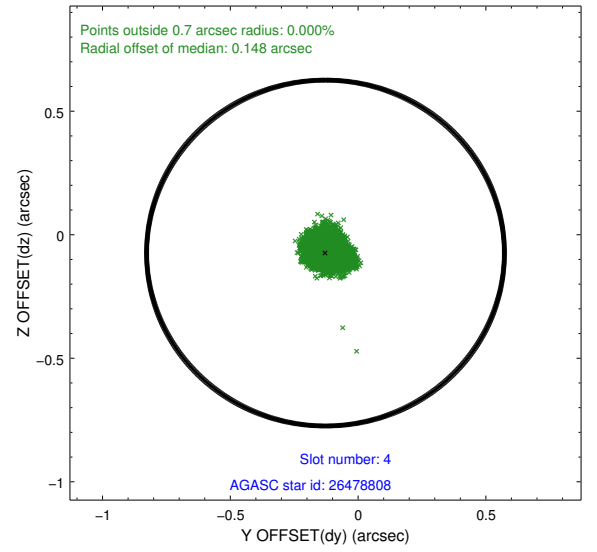
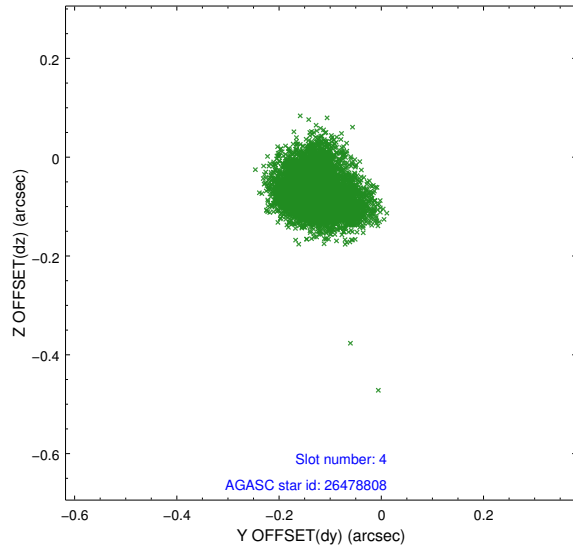
slot	status	id	mag	n_pts	med_dy	med_dz	dr1	dr2	ra	dec	mean_y	mean_z
0	FID	ACIS-S-2	7.10	2486	-0.070	-0.058	0.007	0.011	0.000000	0.000000	-767.29	-1735.41
1	FID	ACIS-S-4	7.19	2486	0.196	0.049	0.006	0.009	0.000000	0.000000	2146.01	172.64
2	FID	ACIS-S-5	7.22	2486	-0.158	0.017	0.007	0.011	0.000000	0.000000	-1819.56	166.87
3	GUIDE	26477480	9.18	4966	0.024	0.049	0.080	0.131	120.719802	5.482207	-1505.56	-641.51
4	GUIDE	26478808	7.25	4971	-0.128	-0.074	0.064	0.100	121.530150	5.559485	-973.97	2226.38
5	GUIDE	26479112	8.92	4965	-0.035	-0.003	0.079	0.126	121.440982	5.412421	-552.50	1774.31
6	GUIDE	26487192	6.90	4972	0.044	-0.145	0.066	0.107	120.481632	4.541449	1513.66	-2397.45
7	GUIDE	26487640	8.93	4970	0.092	0.168	0.084	0.138	121.326715	5.418691	-686.14	1385.95

2.4 Star Slots

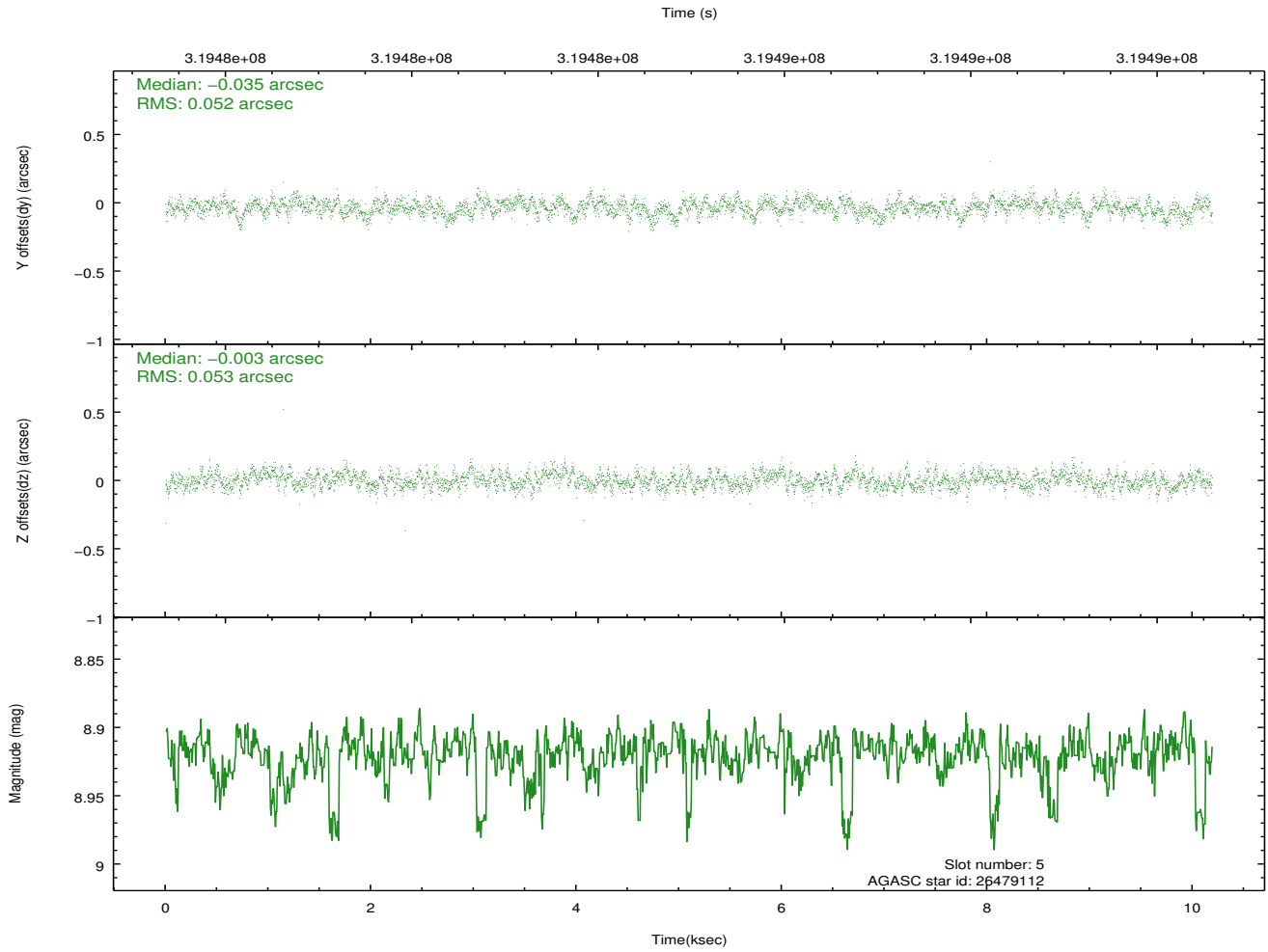
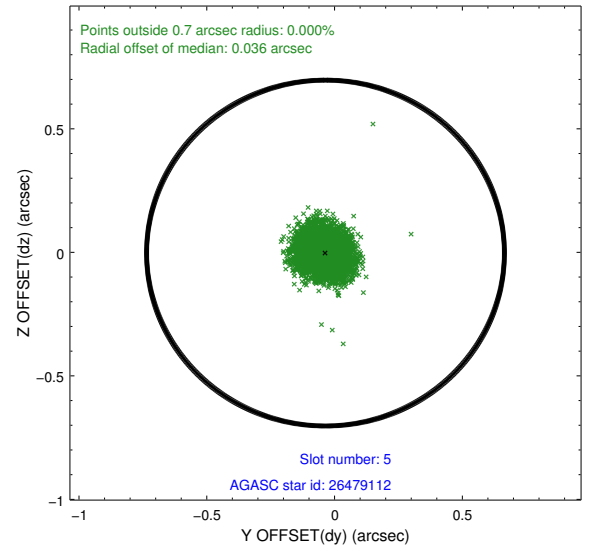
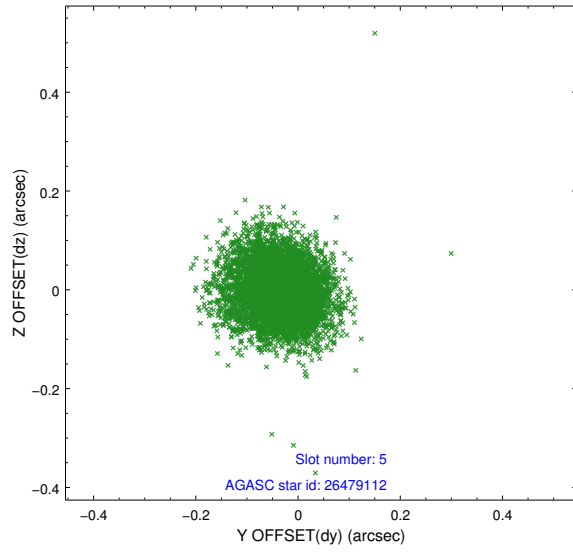
2.4.1 Slot 3



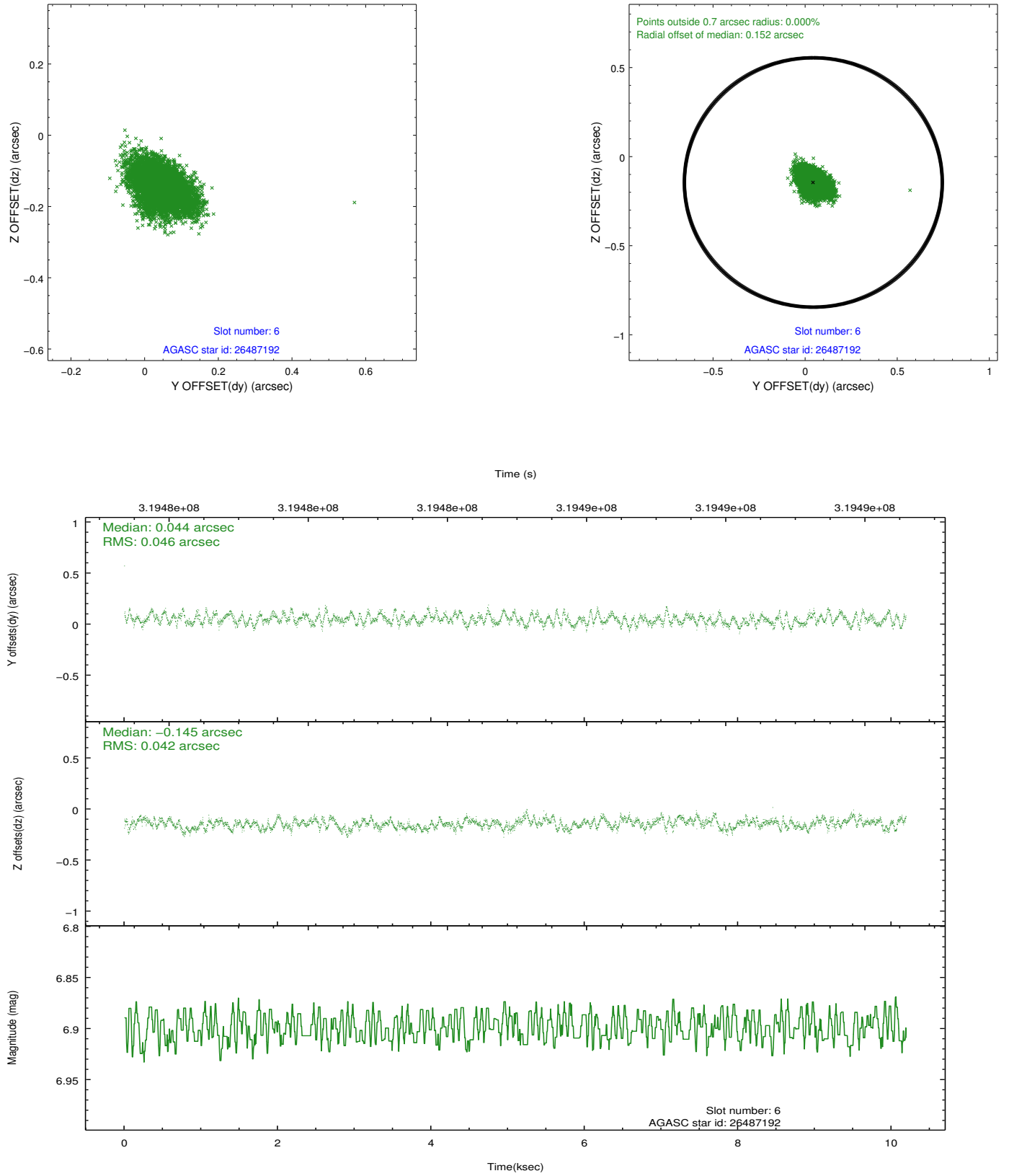
2.4.2 Slot 4



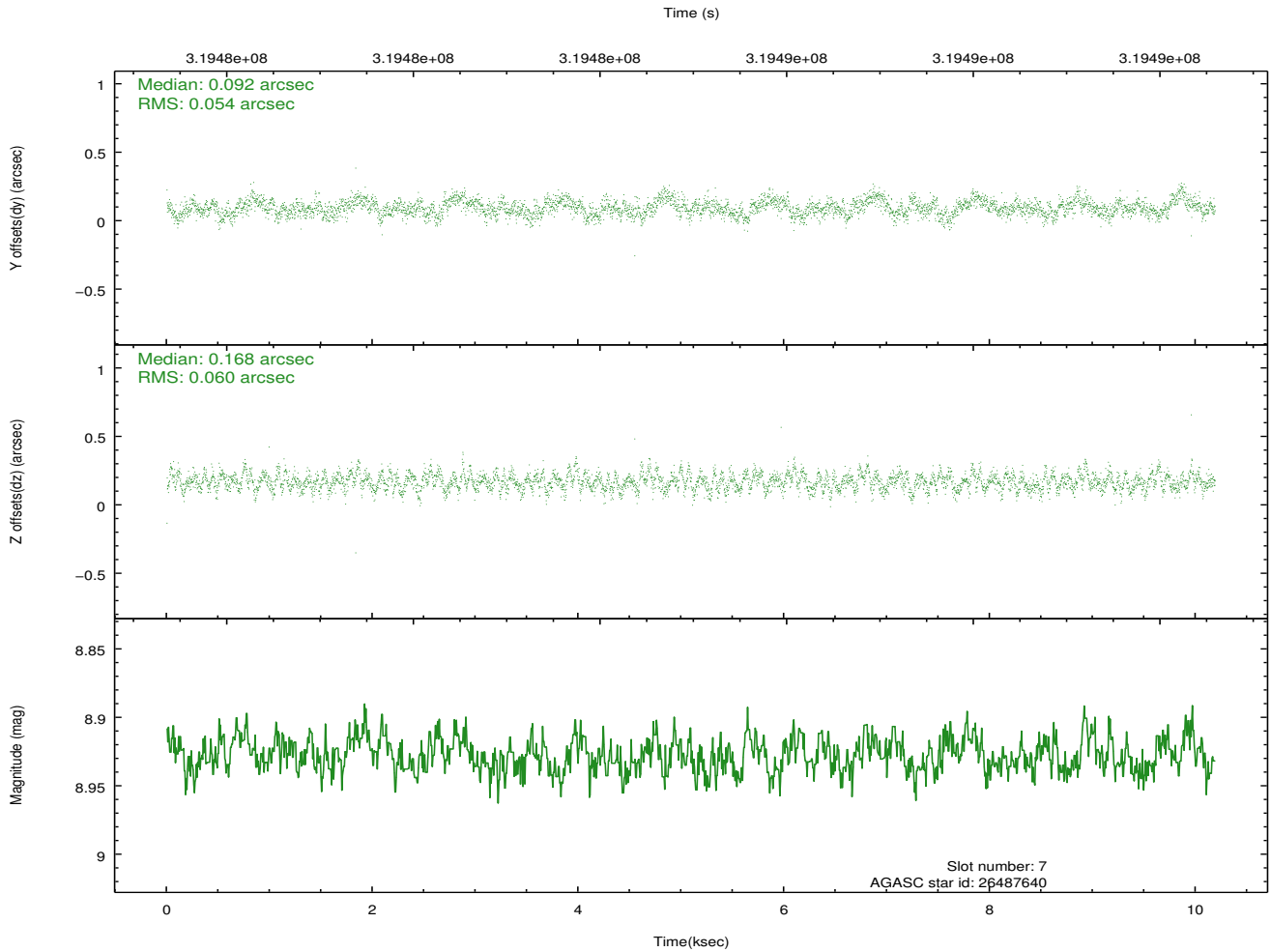
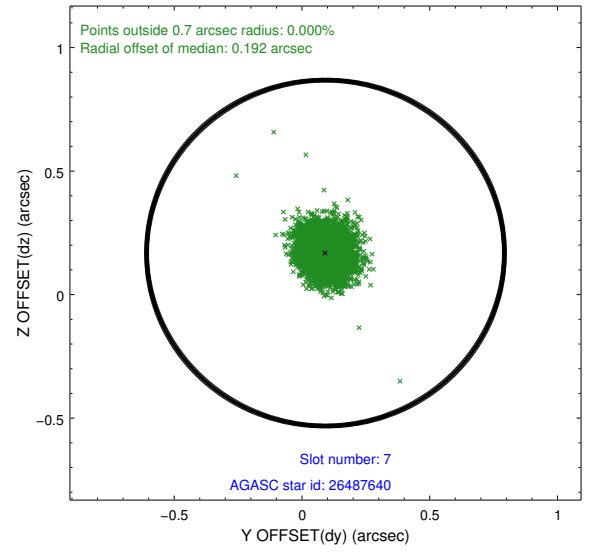
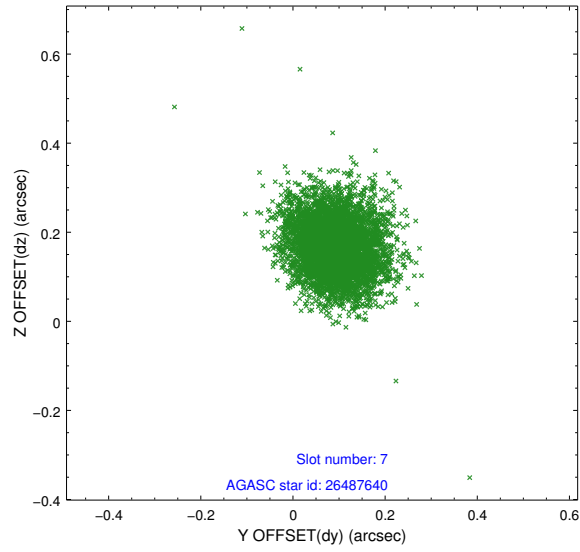
2.4.3 Slot 5



2.4.4 Slot 6

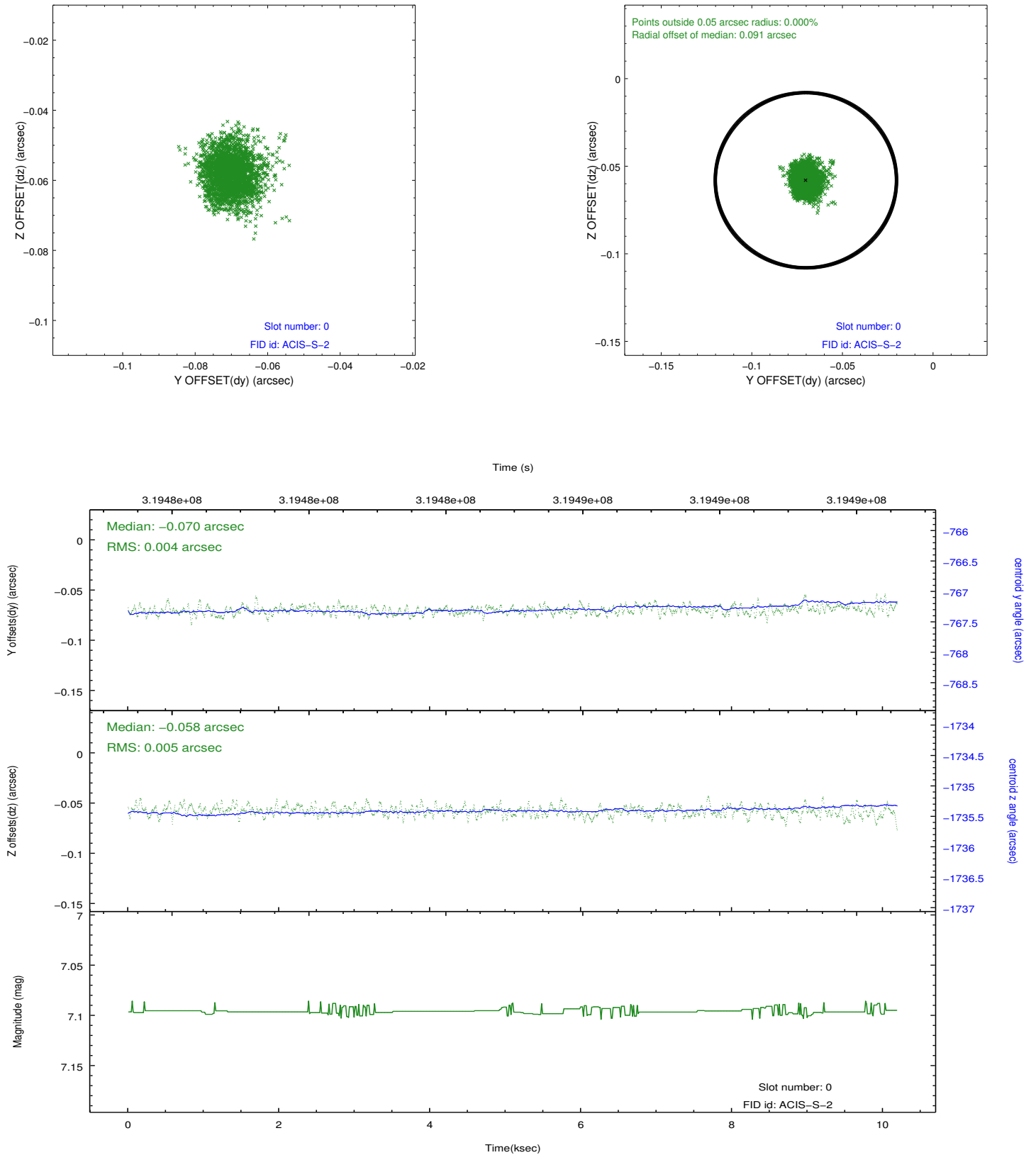


2.4.5 Slot 7

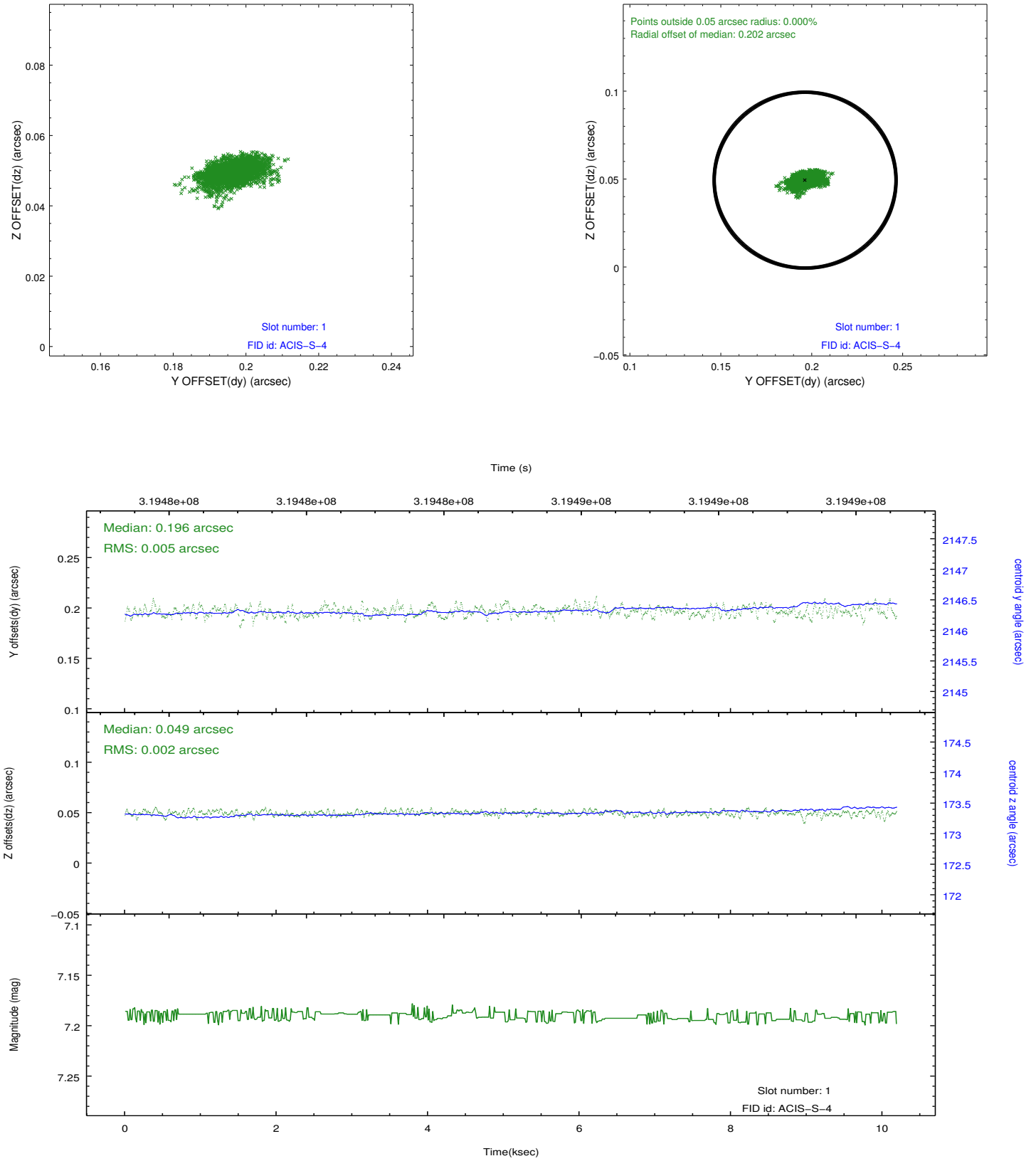


2.5 FID Slots

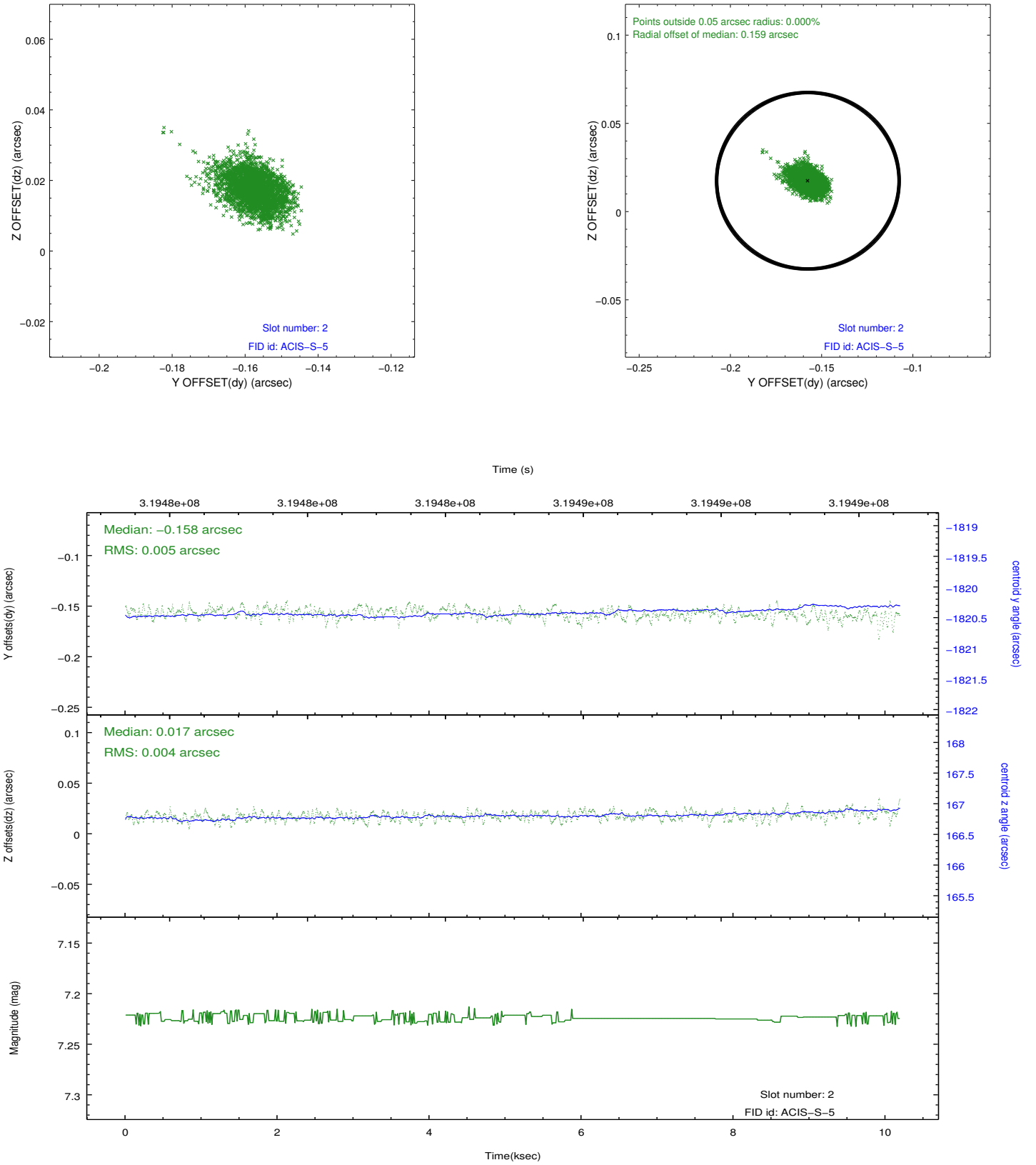
2.5.1 Slot 0



2.5.2 Slot 1



2.5.3 Slot 2



A Summary

A.1 Status

V&V Scientist	Jen Lauer
V&V Date (YYYY-MM-DD)	2012.05.11
V&V Edition	1
V&V Disposition and Status	OK
V&V Charge Time	9.76360021

A.2 Comments