

V&V Reference Report

L2 ASCDS Version : 8.4.4

Observation 9264 - L2 Version 2
Chandra X-Ray Center

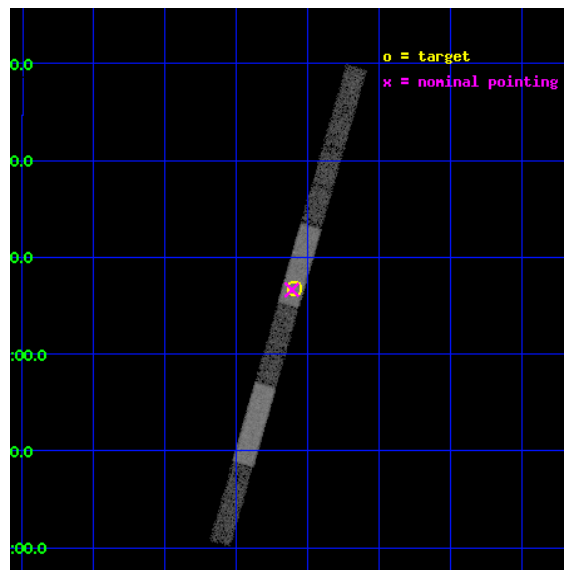
L2 Processing Date : May 9 2012

Contents

1	Front	2
2	OBI	3
2.1	OBI	3
2.1.1	Images	3
2.1.2	Bias	3
2.1.3	Parameters	4
2.1.4	Events	4
2.2	Compared Parameters	5
2.3	Aspect	6
2.4	Star Slots	9
2.4.1	Slot 3	9
2.4.2	Slot 4	10
2.4.3	Slot 5	11
2.4.4	Slot 6	12
2.4.5	Slot 7	13
2.5	FID Slots	14
2.5.1	Slot 0	14
2.5.2	Slot 1	15
2.5.3	Slot 2	16
A	Summary	17
A.1	Status	17
A.2	Comments	17

1 Front

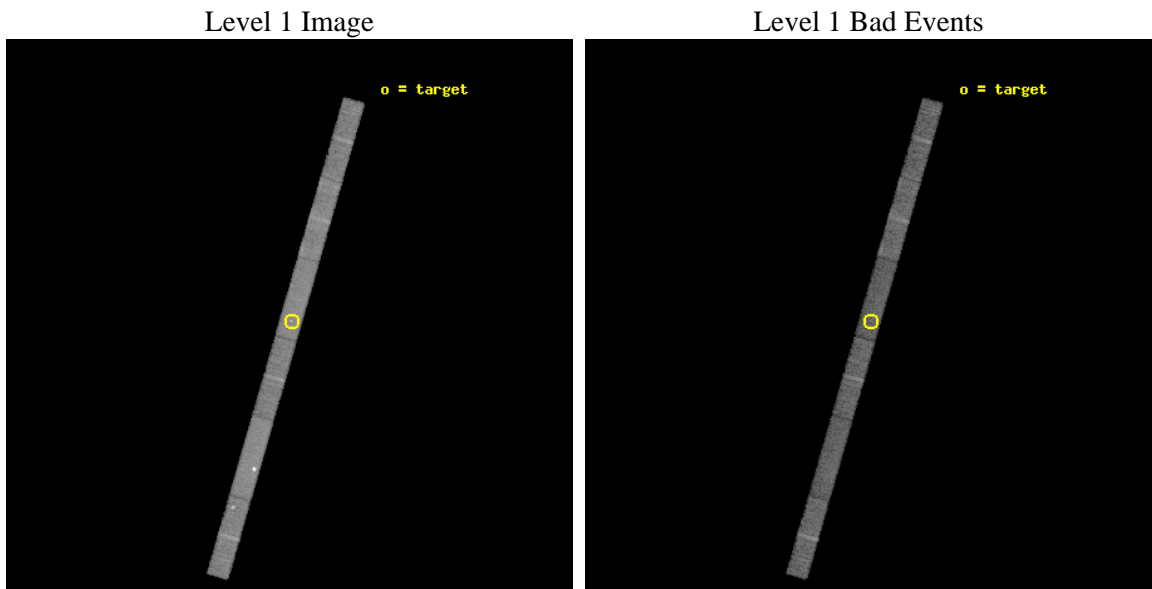
seq_num	701705	Sequence number
obs_id	9264	Observation id
title	Short-time monitoring of extreme spectral variations in Seyfert 2s	
observer	Dr Guido Risaliti	Principal investigator
object	UGC 4203	Source name
dtcycle	0	
cycle	P	events from which exps? Prim/Second/Both
ra_targ	121.024167	Observer's specified target RA [deg]
dec_targ	5.113889	Observer's specified target Dec [deg]
ra_nom	121.02783177934	Nominal RA [deg]
dec_nom	5.1106539780353	Nominal Dec [deg]
roll_nom	286.15630743967	Nominal Roll [deg]
revision	2	Processing version of data
ontime	10182.700220704	Sum of GTIs [s]
livetime	9816.4571292632	Livetime [s]
ontime4	10182.700220704	Sum of GTIs [s]
ontime5	10182.700220704	Sum of GTIs [s]
ontime6	10182.700220704	Sum of GTIs [s]
ontime7	10182.700220704	Sum of GTIs [s]
ontime8	10182.700220704	Sum of GTIs [s]
ontime9	10182.700220704	Sum of GTIs [s]
l2events	46193	Number of level 2 events



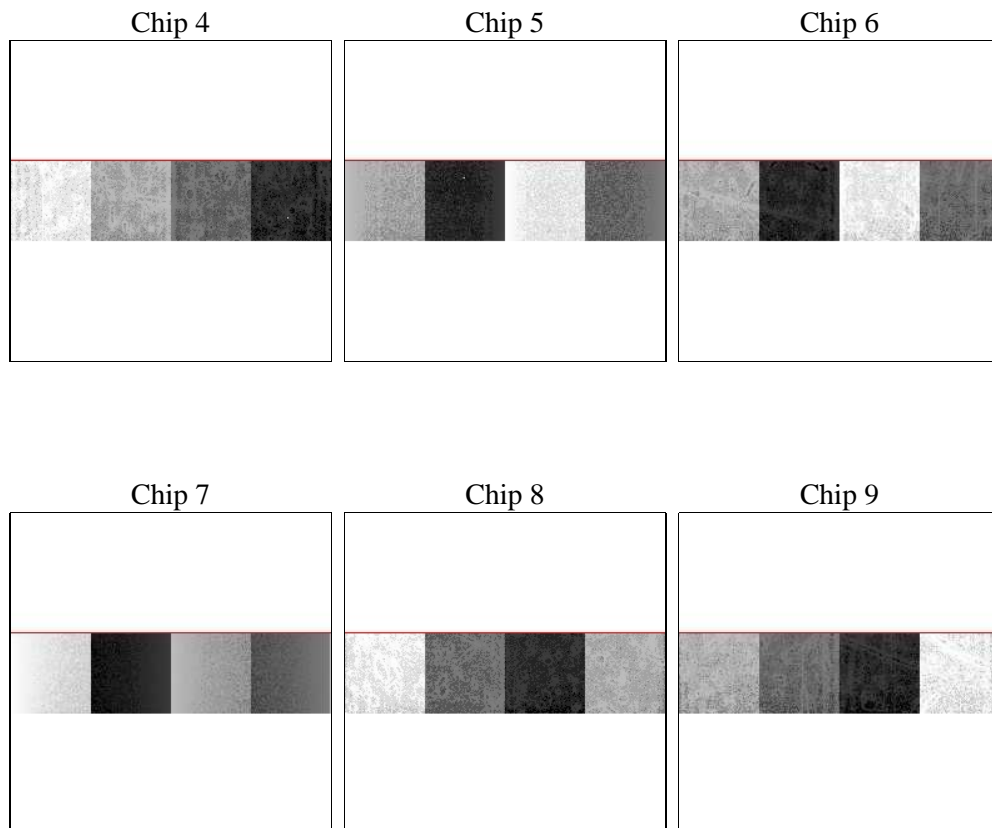
2 OBI

2.1 OBI

2.1.1 Images



2.1.2 Bias



2.1.3 Parameters

obi_num	1	Obi number	sched_exp_time	10000.000000	[s] Scheduled observation exposure time
ascdsver	8.4.4	Processing system revision	ontime	10182.700220704	Sum of GTIs [s]
caldsver	4.4.9	 	ontime4	10182.700220704	Sum of GTIs [s]
date	2012-05-09T18:38:42	Date and time of file creation	ontime5	10182.700220704	Sum of GTIs [s]
revision	2	Processing version of data	ontime6	10182.700220704	Sum of GTIs [s]
			ontime7	10182.700220704	Sum of GTIs [s]
			ontime8	10182.700220704	Sum of GTIs [s]
			ontime9	10182.700220704	Sum of GTIs [s]
			l1events	228727	Number of level 1 events

2.1.4 Events

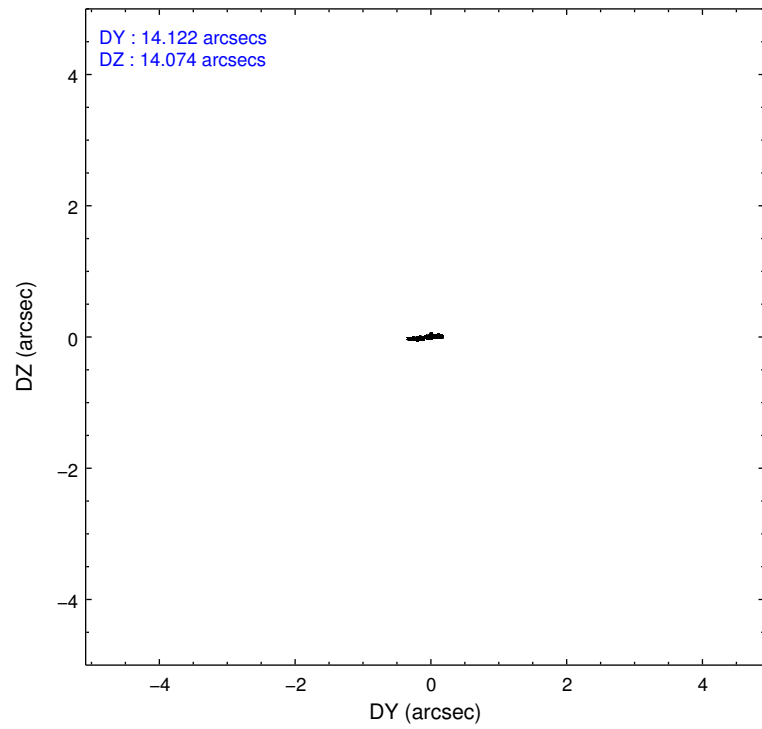
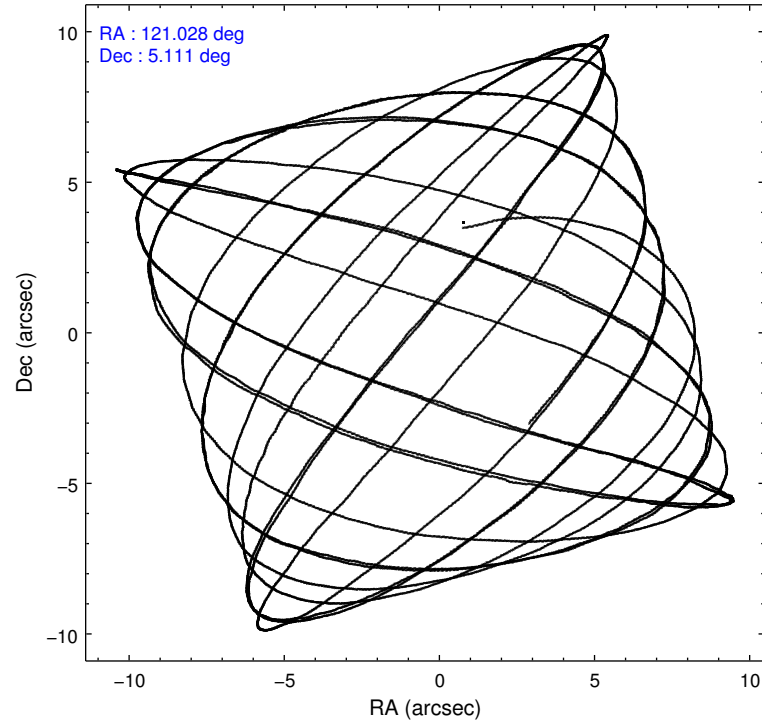
	ccd 4	ccd 5	ccd 6	ccd 7	ccd 8	ccd 9		ccd 4	ccd 5	ccd 6	ccd 7	ccd 8	ccd 9
level 1 events	35033	51080	30795	41189	40804	29826	grade 0 events	2905	10326	1285	2217	2456	1399
rejected events	30204	25016	27328	23377	32484	26423		8%	20%	4%	5%	6%	4%
rejected %	86%	48%	88%	56%	79%	88%	grade 1 events	30	74	9	69	20	13
								0%	0%	0%	0%	0%	0%
							grade 2 events	755	5941	753	4002	2058	639
								2%	11%	2%	9%	5%	2%
							grade 3 events	510	1034	470	1881	980	476
								1%	2%	1%	4%	2%	1%
							grade 4 events	480	1000	467	1848	906	476
								1%	1%	1%	4%	2%	1%
							grade 5 events	1354	3483	1380	3749	1707	1338
								3%	6%	4%	9%	4%	4%
							grade 6 events	550	9854	742	9166	2542	675
								1%	19%	2%	22%	6%	2%
							grade 7 events	28449	19368	25689	18257	30135	24810
								81%	37%	83%	44%	73%	83%

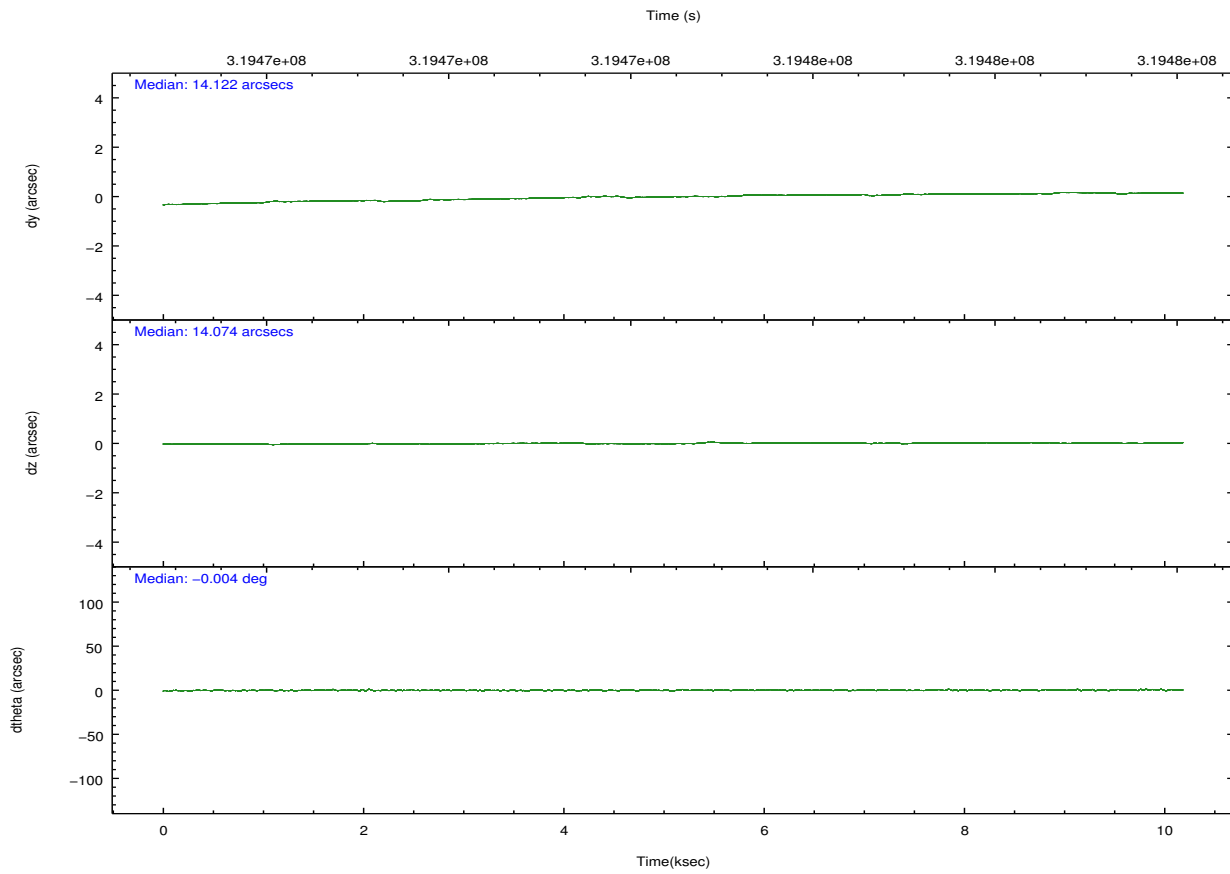
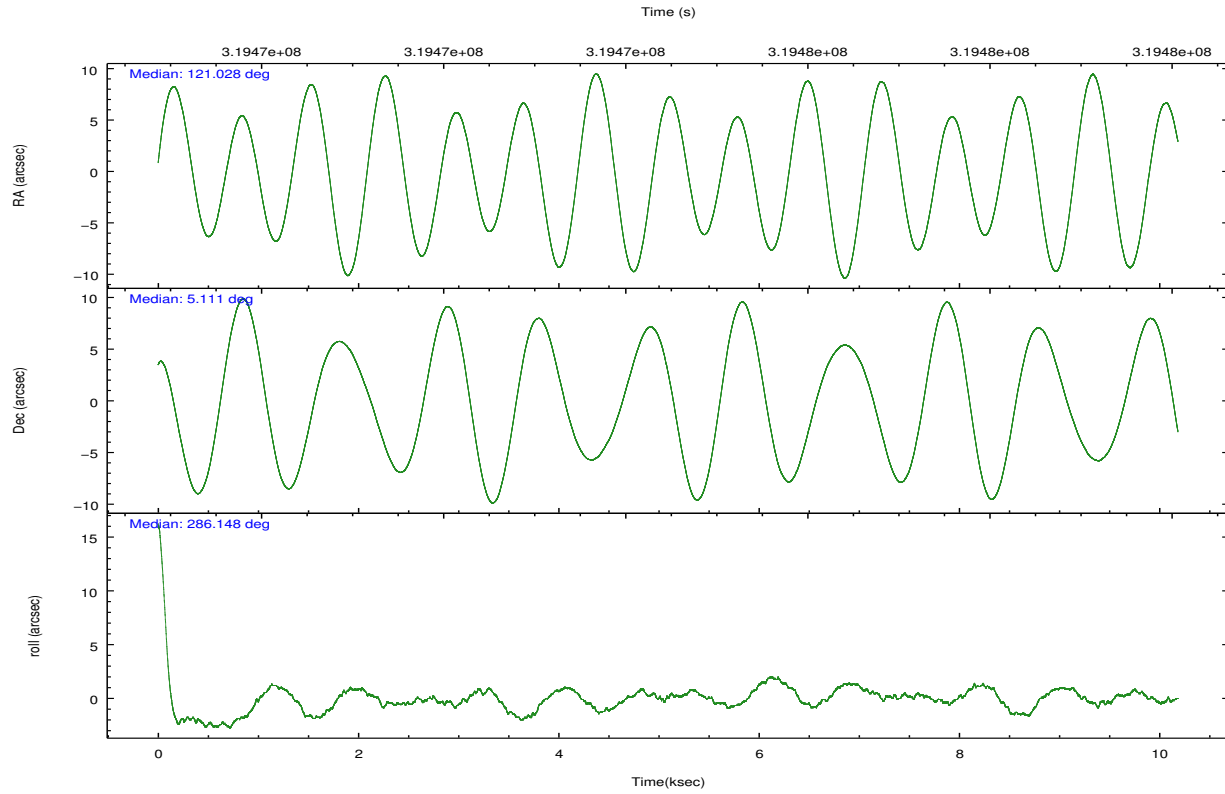
2.2 Compared Parameters

Parameter	Planned	Actual
Instrument	ACIS	ACIS
Detector	ACIS-456789	ACIS-456789
Grating	NONE	NONE
Data mode	FAINT	FAINT
Observation mode	POINTING	POINTING
[deg] Pointing RA	121.007715	121.0278317793437
[deg] Pointing Dec	5.129310	5.110653978035321
[deg] Pointing Roll	286.001469	286.1563074396673
[mm] SIM focus pos	-0.684267	-0.6828225247311905
[mm] SIM defocus	0	0.001444936568705701
[mm] SIM translation stage pos	-190.132523	-190.1425803651734
[mm] SIM translation stage offset	0	0.01005778216563158
[s] Observation start time (MET)	319469559.184000	319468367.2437
Observation start date	2008-02-15T13:31:34	2008-02-15T13:12:47
[s] Observation end time (MET)	319479559.184000	319479692.98175
Observation end date	2008-02-15T16:18:14	2008-02-15T16:21:32
Read mode	TIMED	TIMED

Parameter	Planned	Actual
Obspar format version number	7	7
Obspar file type	PREDICTED	ACTUAL
Obspar update status	NONE	UPDATED
CCD I0 on	N	N
CCD I1 on	N	N
CCD I2 on	N	N
CCD I3 on	N	N
CCD S0 on	O1	Y
CCD S1 on	Y	Y
CCD S2 on	Y	Y
CCD S3 on	Y	Y
CCD S4 on	Y	Y
CCD S5 on	O2	Y
Number of optional ACIS chips dropped	0	0
On-chip summing requested	N	N
Subarray requested	CUSTOM	1/4
Subarray start row	385	385
Subarray row count	256	256
Alternating exposures requested	N	N
[s] Primary exposure time	0.000000	1.1

2.3 Aspect



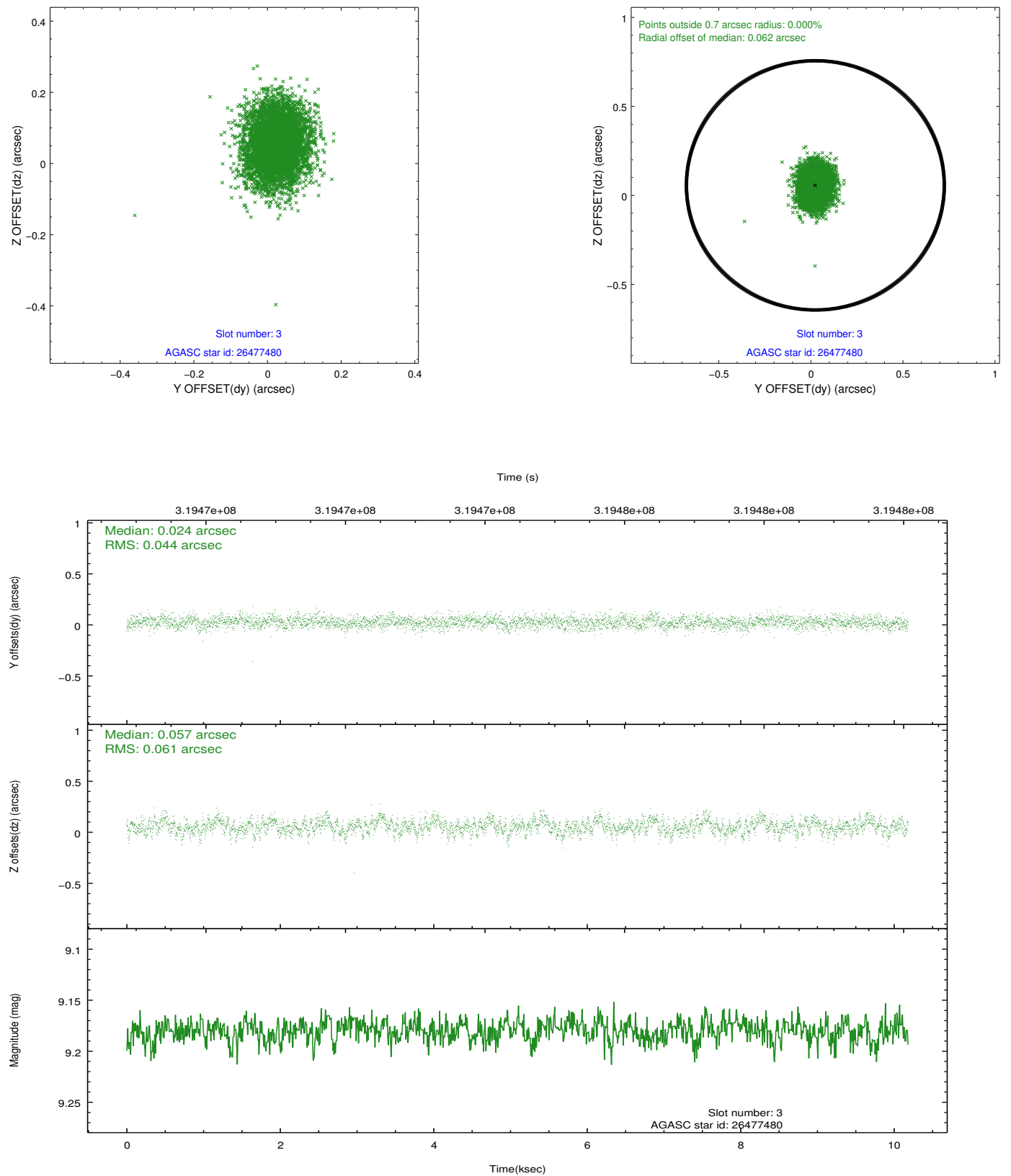


Slot Statistics

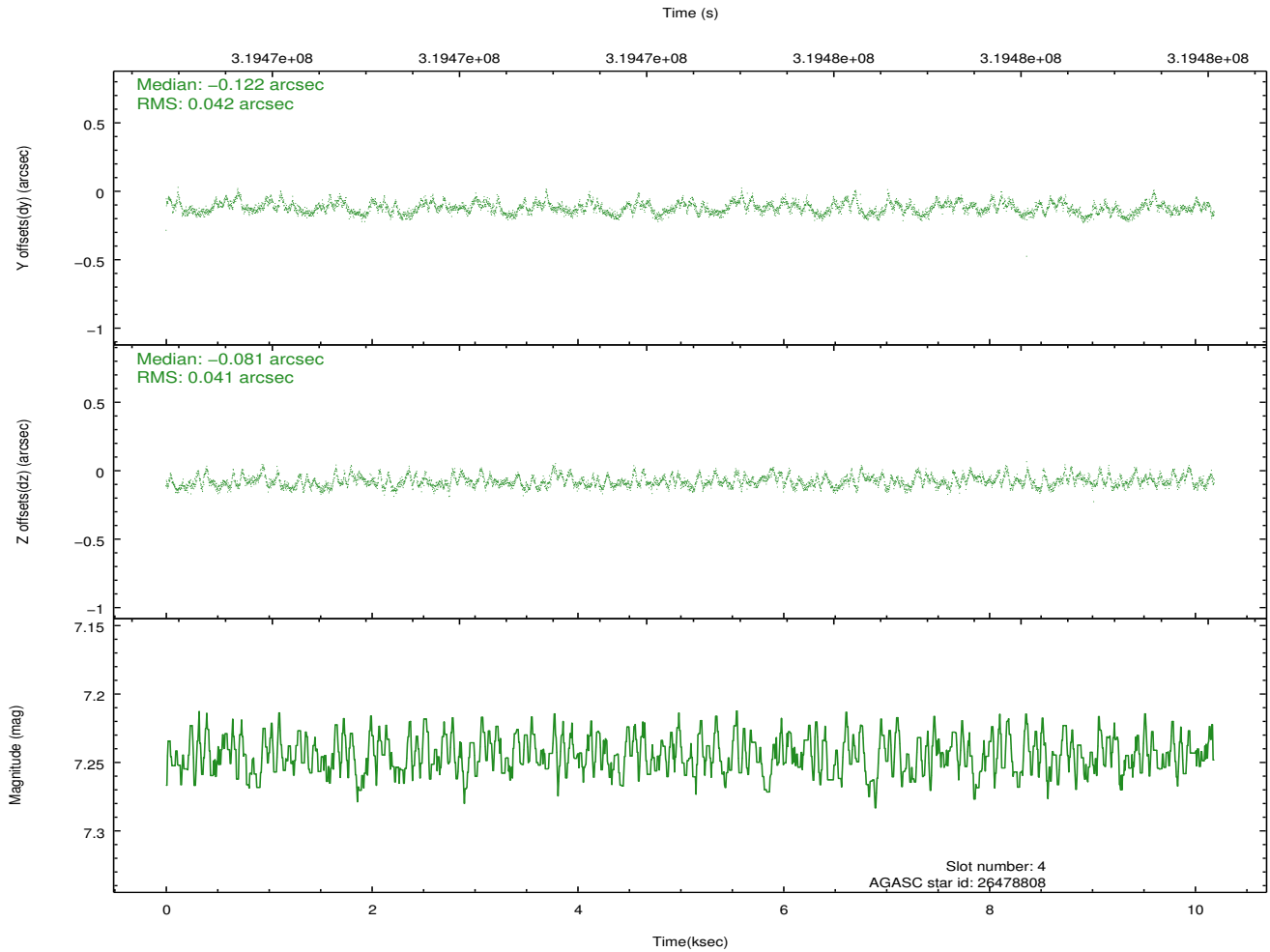
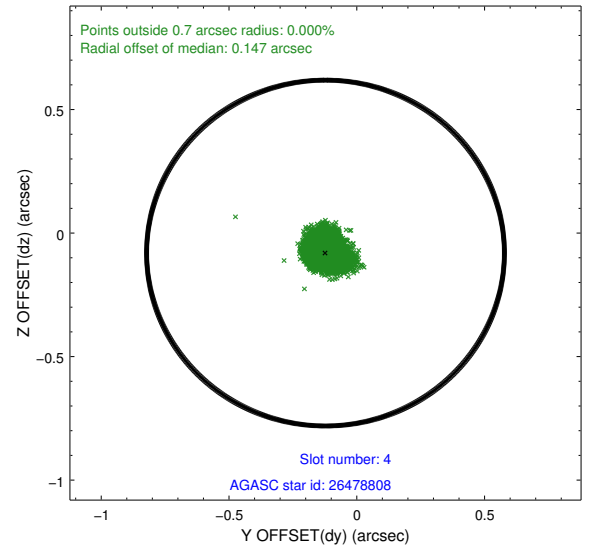
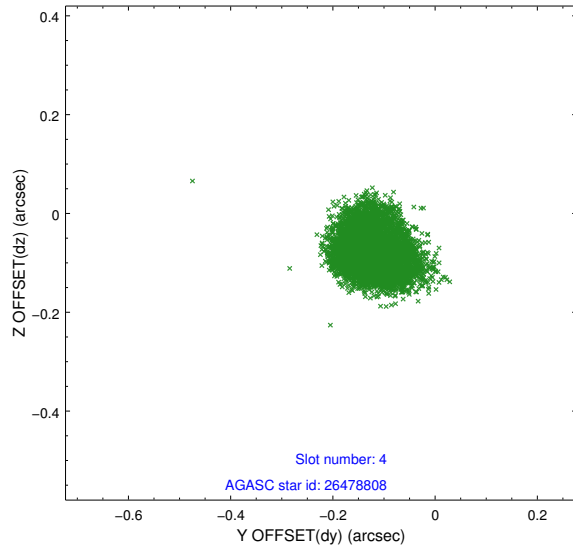
slot	status	id	mag	n_pts	med_dy	med_dz	dr1	dr2	ra	dec	mean_y	mean_z
0	FID	ACIS-S-2	7.10	2484	-0.061	-0.051	0.009	0.015	0.000000	0.000000	-767.10	-1735.43
1	FID	ACIS-S-4	7.19	2484	0.183	0.043	0.010	0.017	0.000000	0.000000	2146.18	172.62
2	FID	ACIS-S-5	7.22	2484	-0.154	0.017	0.007	0.012	0.000000	0.000000	-1819.37	166.85
3	GUIDE	26477480	9.18	4961	0.024	0.057	0.080	0.131	120.719802	5.482207	-1505.55	-641.56
4	GUIDE	26478808	7.24	4969	-0.122	-0.081	0.063	0.096	121.530150	5.559485	-973.94	2226.31
5	GUIDE	26479112	8.92	4967	-0.037	-0.009	0.077	0.125	121.440982	5.412421	-552.48	1774.24
6	GUIDE	26487640	8.93	4968	0.092	0.165	0.084	0.133	121.326715	5.418691	-686.54	1386.73
7	GUIDE	26487192	6.90	4968	0.039	-0.136	0.064	0.105	120.481632	4.541449	1513.64	-2397.58

2.4 Star Slots

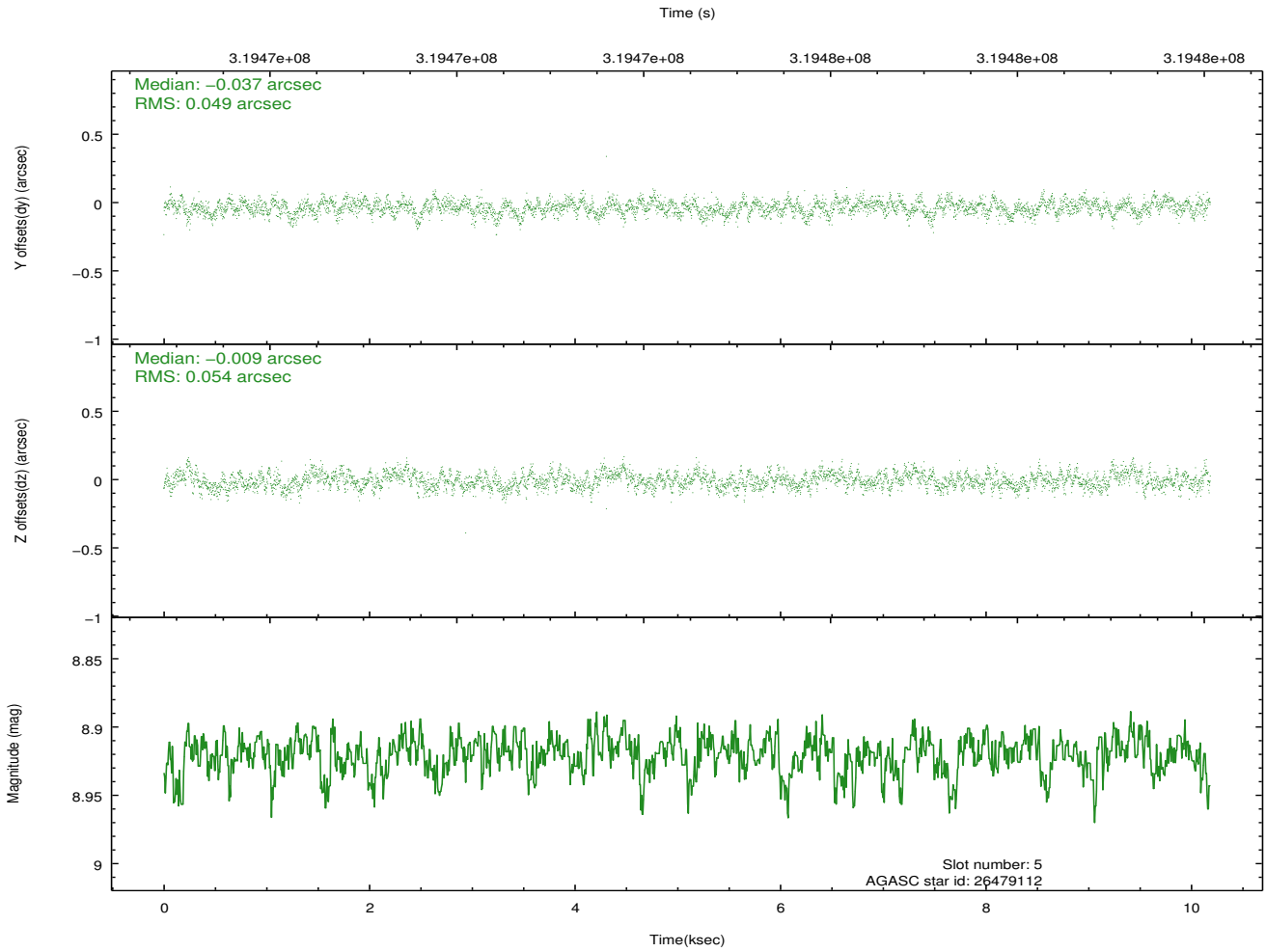
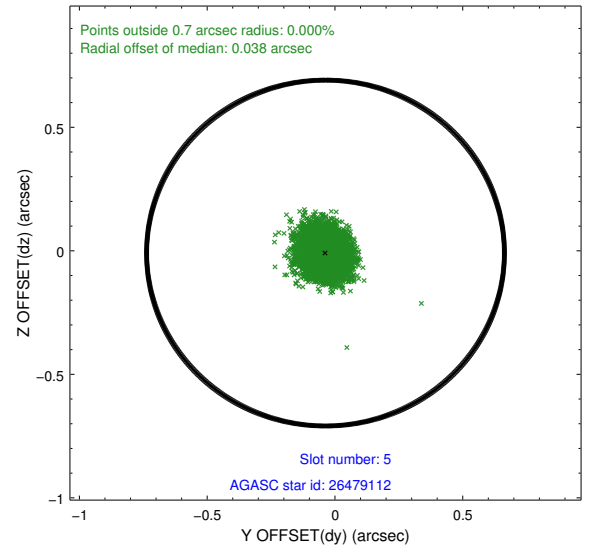
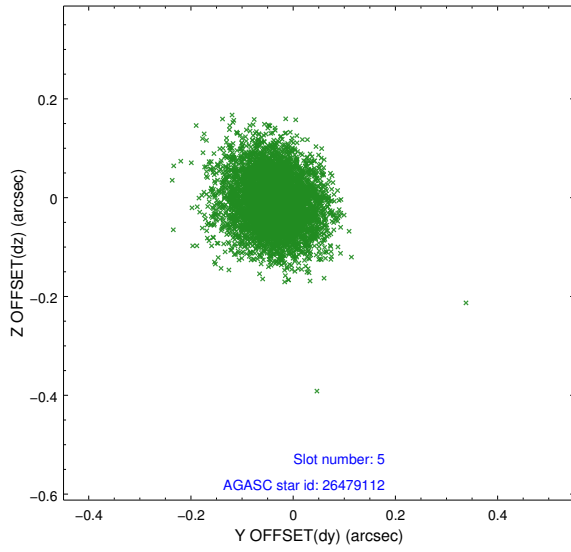
2.4.1 Slot 3



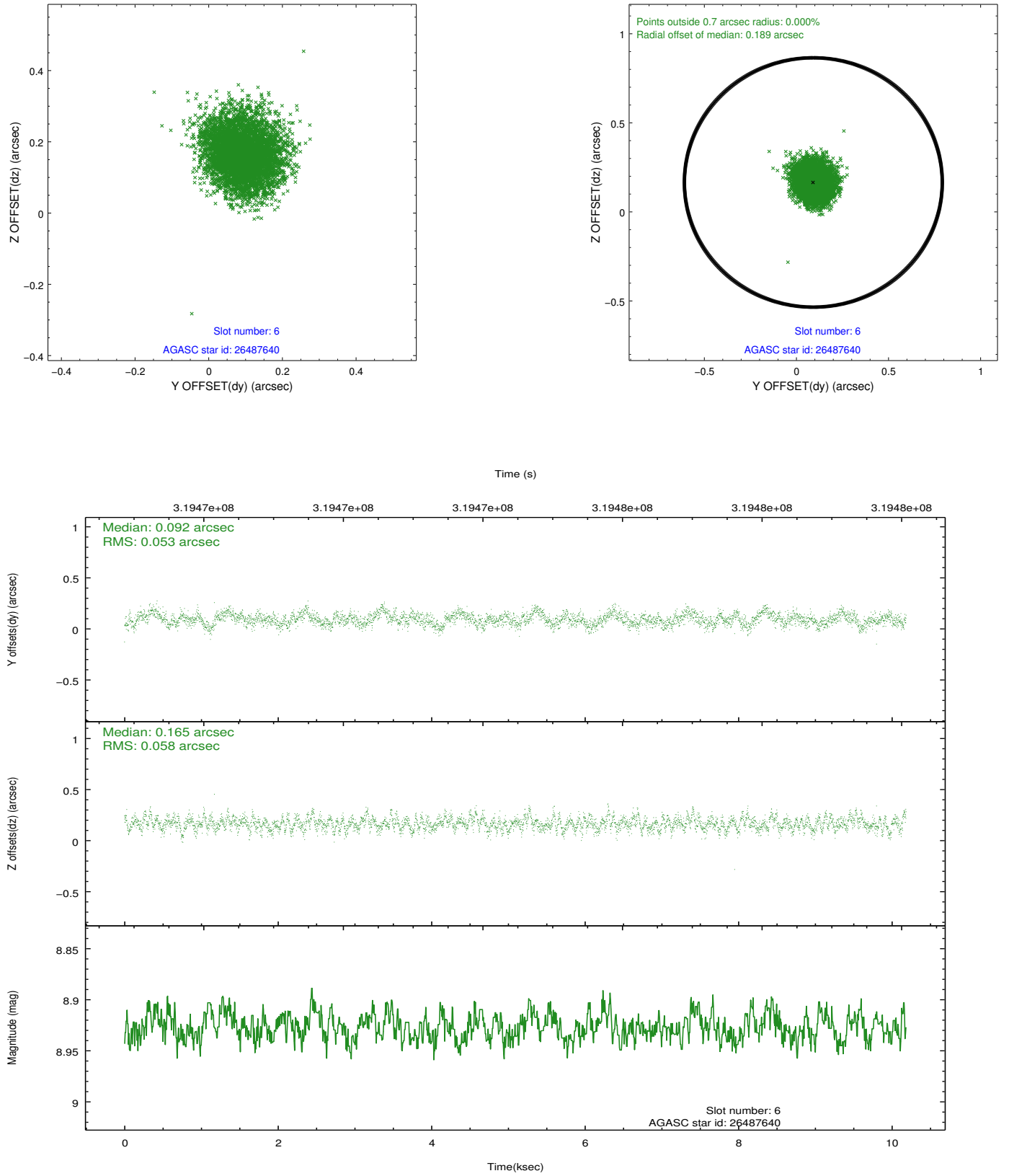
2.4.2 Slot 4



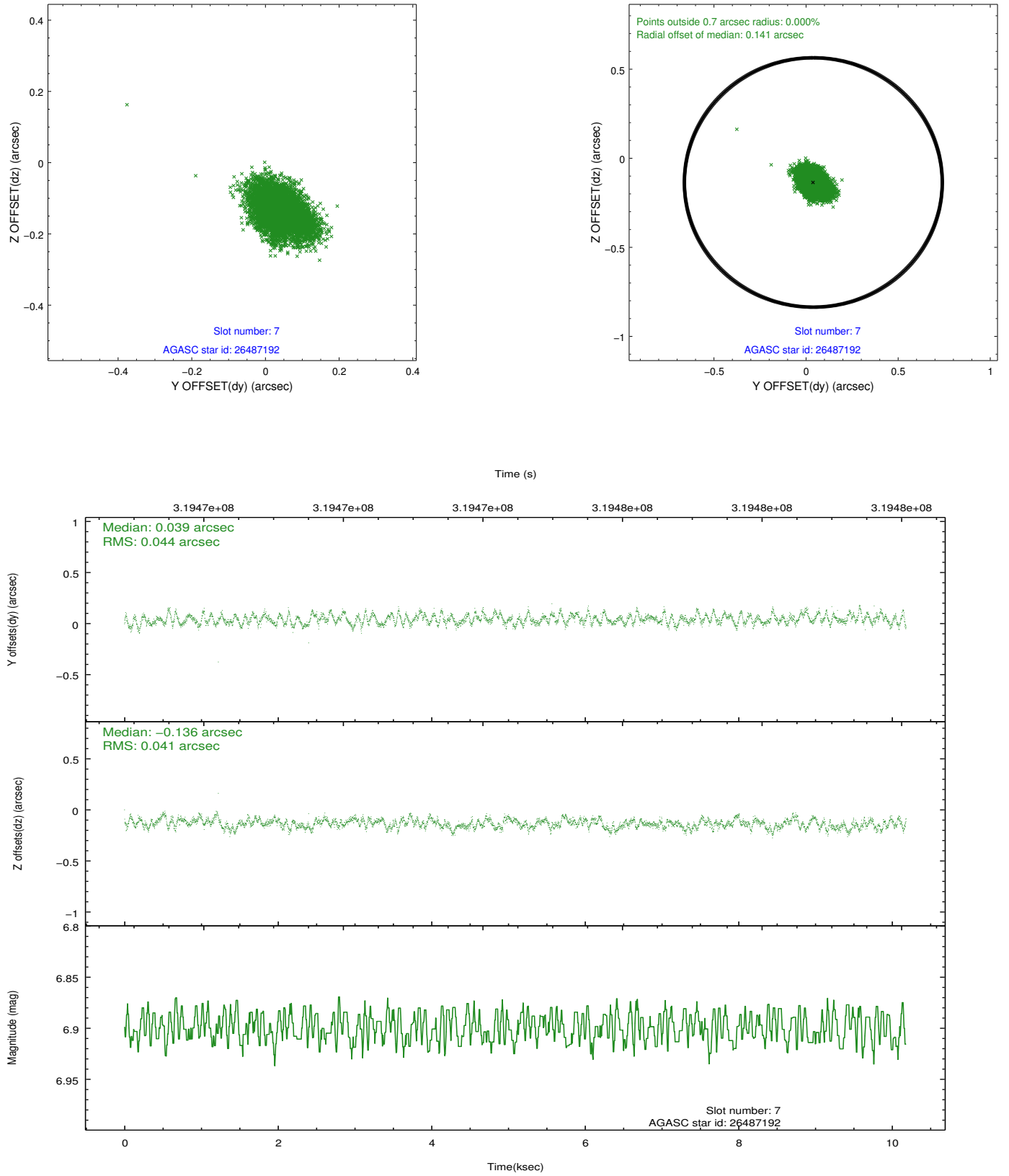
2.4.3 Slot 5



2.4.4 Slot 6

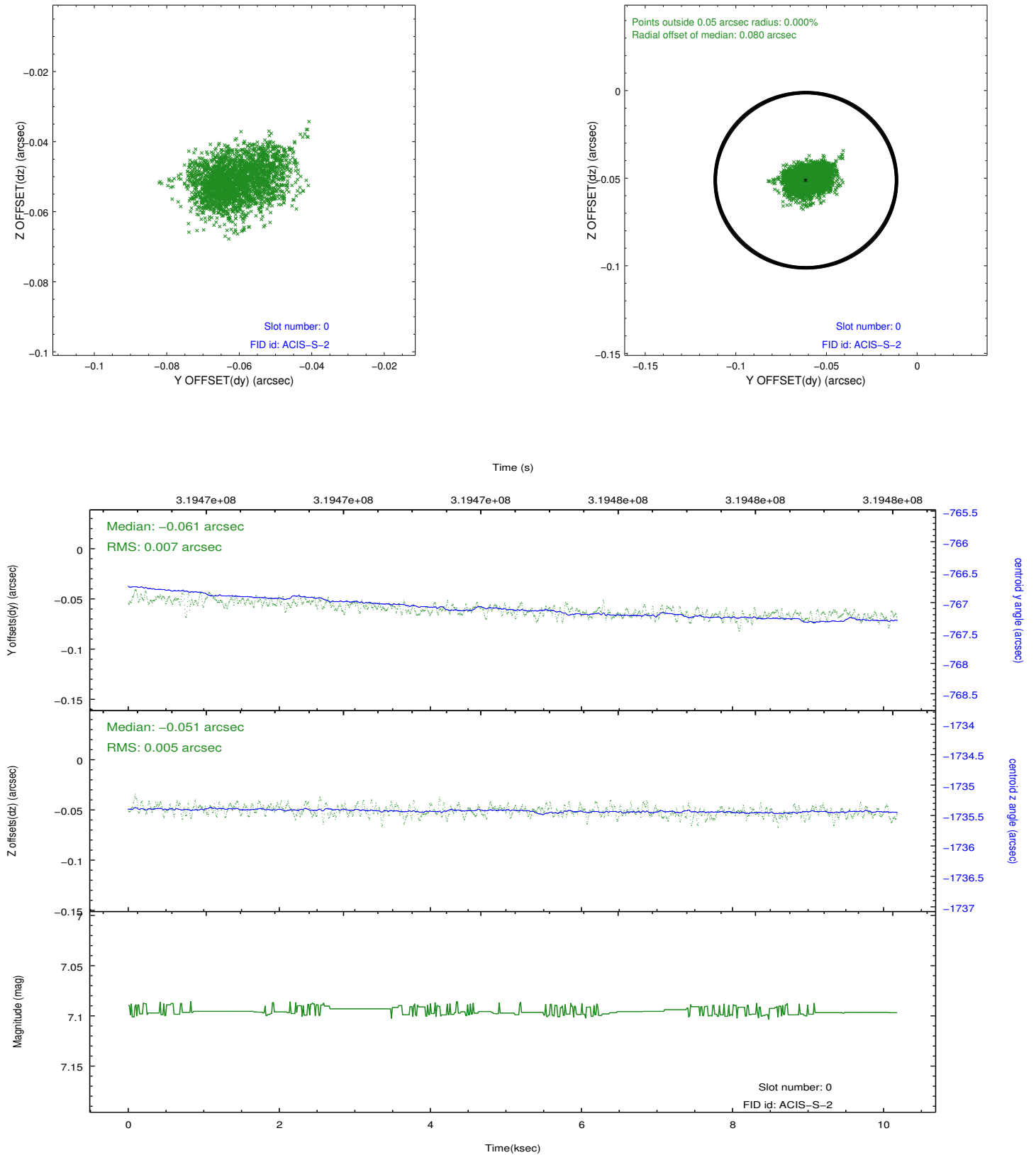


2.4.5 Slot 7

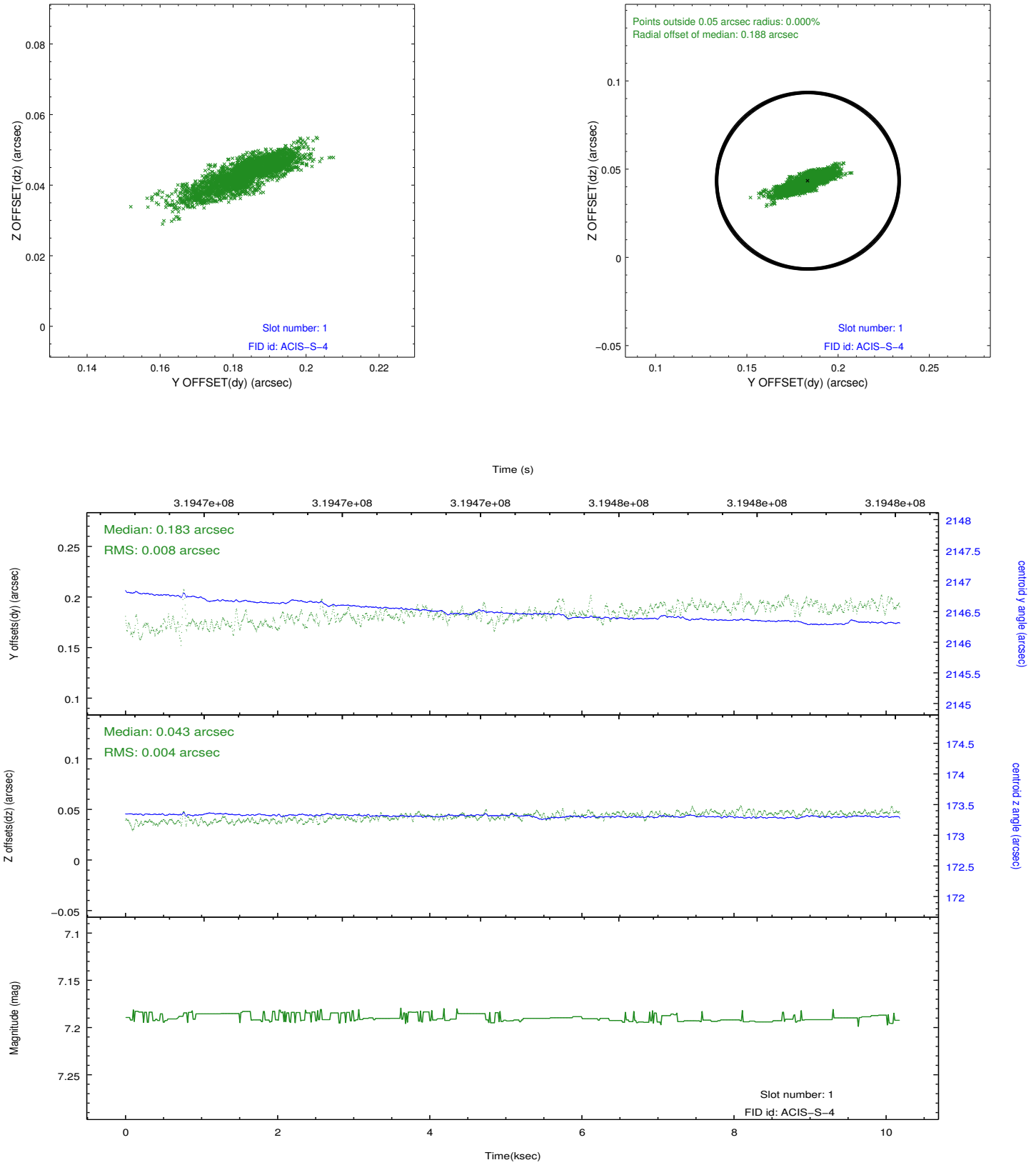


2.5 FID Slots

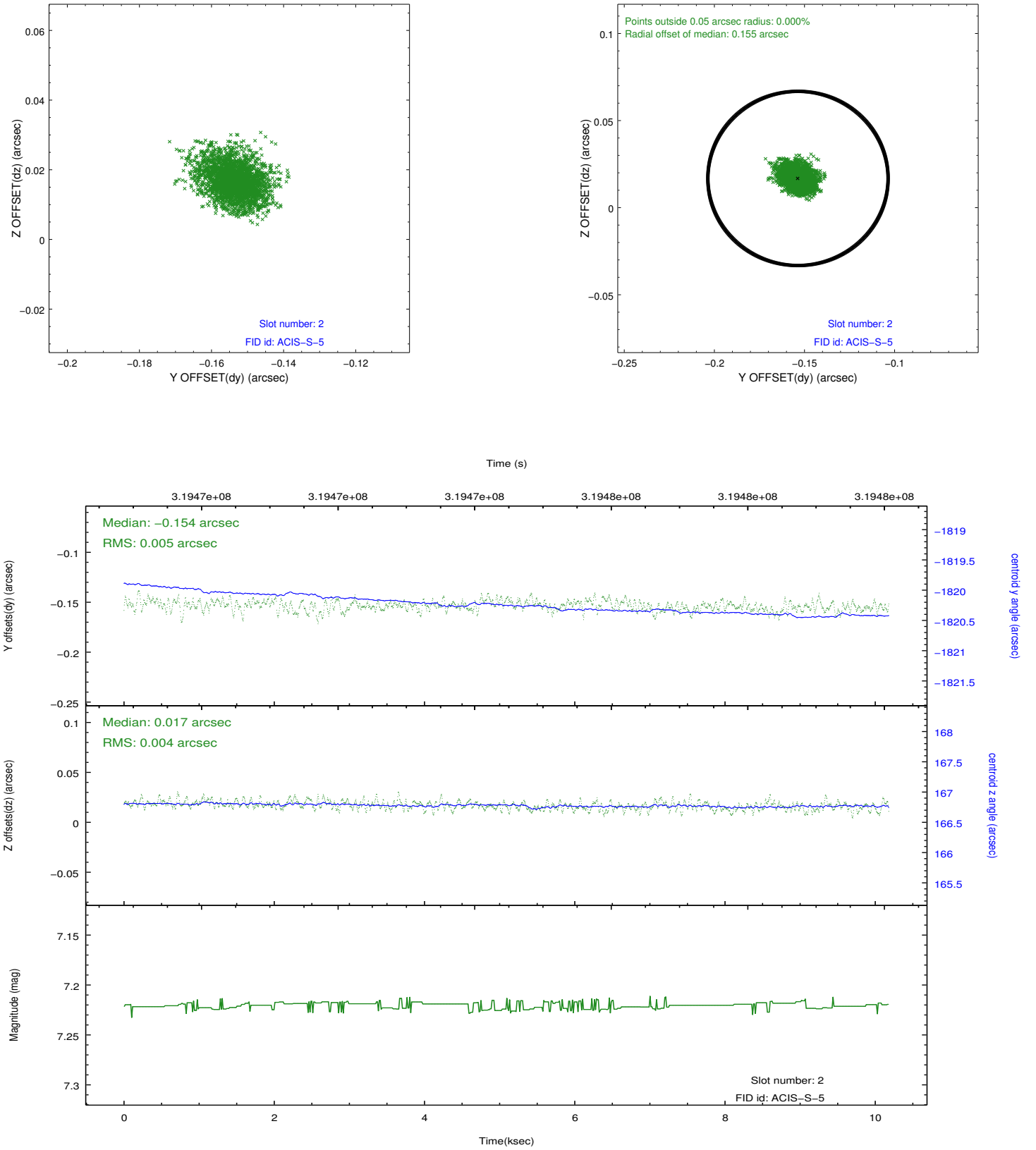
2.5.1 Slot 0



2.5.2 Slot 1



2.5.3 Slot 2



A Summary

A.1 Status

V&V Scientist	Jen Lauer
V&V Date (YYYY-MM-DD)	2012.05.11
V&V Edition	1
V&V Disposition and Status	OK
V&V Charge Time	10.1827002

A.2 Comments