

V&V Reference Report

L2 ASCDS Version : 8.4.4

Observation 9259 - L2 Version 2
Chandra X-Ray Center

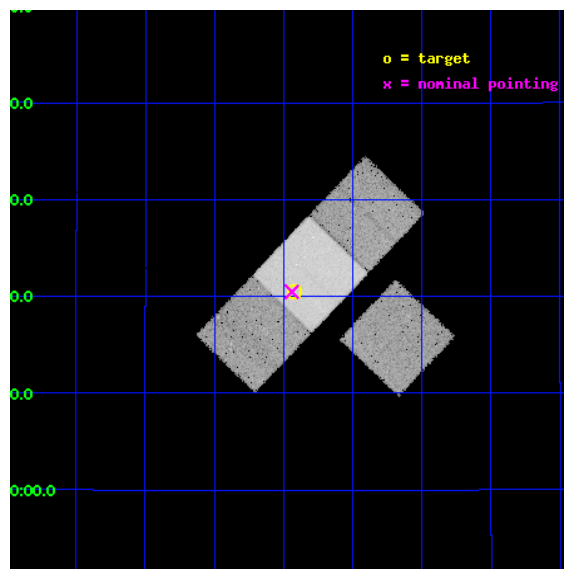
L2 Processing Date : May 7 2012

Contents

1	Front	2
2	OBI	3
2.1	OBI	3
2.1.1	Images	3
2.1.2	Bias	3
2.1.3	Parameters	4
2.1.4	Events	4
2.2	Compared Parameters	5
2.3	Aspect	6
2.4	Star Slots	9
2.4.1	Slot 3	9
2.4.2	Slot 4	10
2.4.3	Slot 5	11
2.4.4	Slot 6	12
2.4.5	Slot 7	13
2.5	FID Slots	14
2.5.1	Slot 0	14
2.5.2	Slot 1	15
2.5.3	Slot 2	16
A	Summary	17
A.1	Status	17
A.2	Comments	17

1 Front

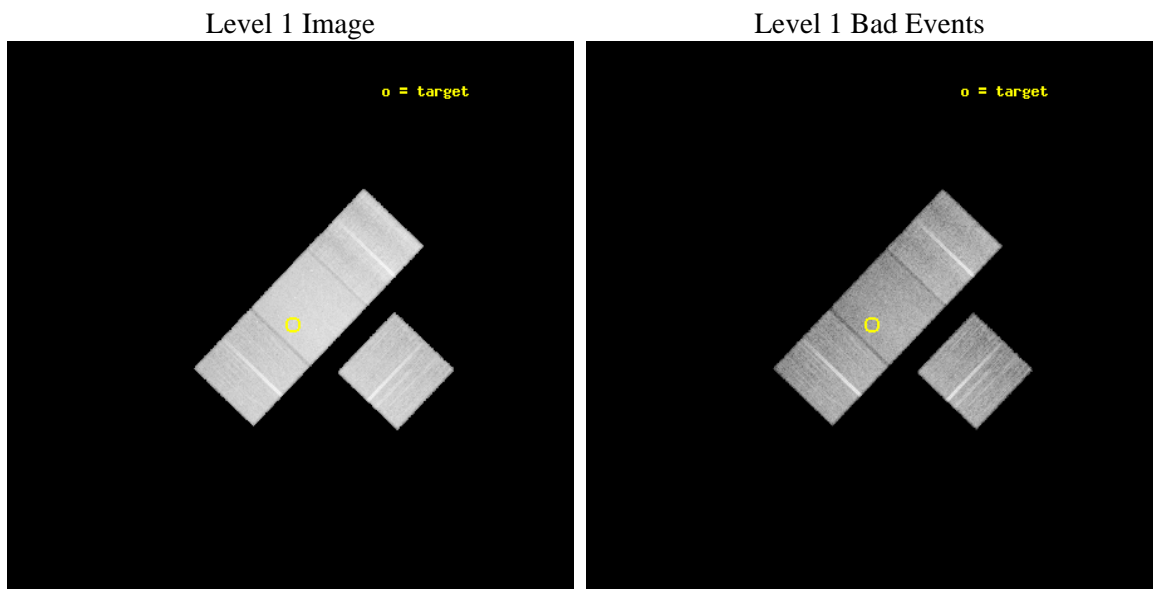
seq_num	701700	Sequence number
obs_id	9259	Observation id
title	Orientation effects in the X-ray and multi-wavelength properties of high-z, 3CRR quasars.	Proposal title
observer	Dr. Belinda Wilkes	Principal investigator
object	3CRR 437	Source name
dtcycle	0	
cycle	P	events from which exps? Prim/Second/Both
ra_targ	326.855	Observer's specified target RA [deg]
dec_targ	15.342583	Observer's specified target Dec [deg]
ra_nom	326.85988683594	Nominal RA [deg]
dec_nom	15.341373297884	Nominal Dec [deg]
roll_nom	313.71179932648	Nominal Roll [deg]
revision	2	Processing version of data
ontime	20140.180324435	Sum of GTIs [s]
livetime	19877.034041511	Livetime [s]
ontime3	20140.098244429	Sum of GTIs [s]
ontime6	20140.139284432	Sum of GTIs [s]
ontime7	20140.180324435	Sum of GTIs [s]
ontime8	20140.057204425	Sum of GTIs [s]
l2events	173313	Number of level 2 events



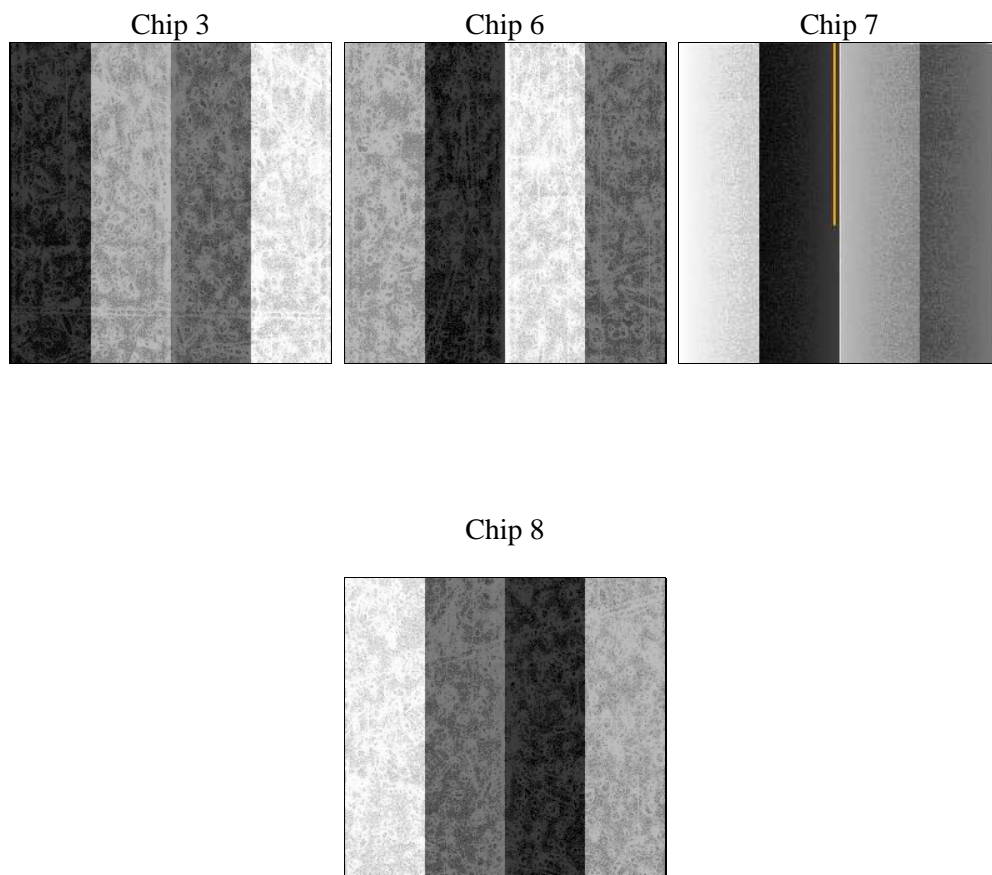
2 OBI

2.1 OBI

2.1.1 Images



2.1.2 Bias



2.1.3 Parameters

obi_num	0	Obi number	sched_exp_time	20000.000000	[s] Scheduled observation exposure time
ascdsver	8.4.4	Processing system revision	ontime	20140.180324435	Sum of GTIs [s]
caldsver	4.4.9	 	ontime3	20140.098244429	Sum of GTIs [s]
date	2012-05-07T17:38:51	Date and time of file creation	ontime6	20140.139284432	Sum of GTIs [s]
revision	2	Processing version of data	ontime7	20140.180324435	Sum of GTIs [s]
			ontime8	20140.057204425	Sum of GTIs [s]
			l1events	891735	Number of level 1 events

2.1.4 Events

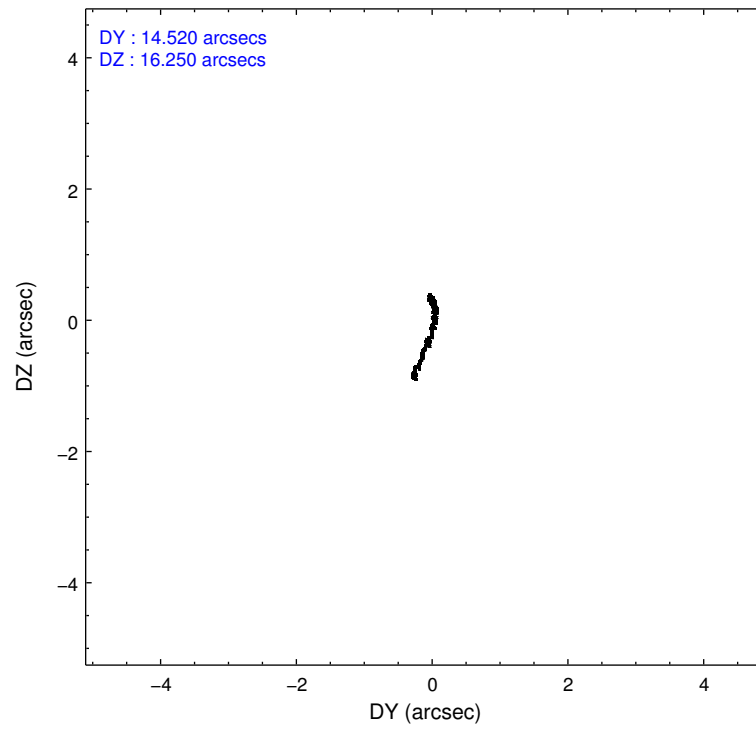
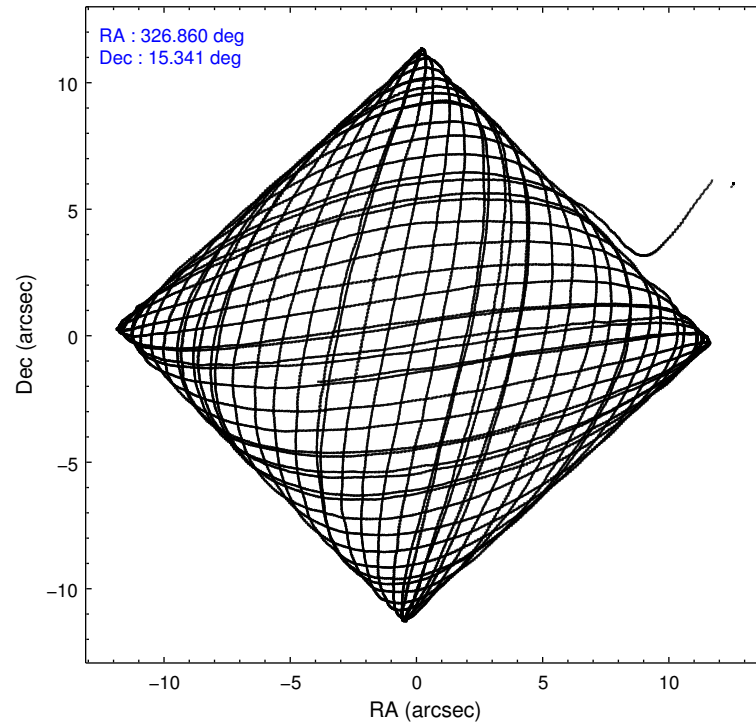
	ccd 3	ccd 6	ccd 7	ccd 8
level 1 events	188660	193563	263552	245960
rejected events	165737	169514	153083	188927
rejected %	87%	87%	58%	76%

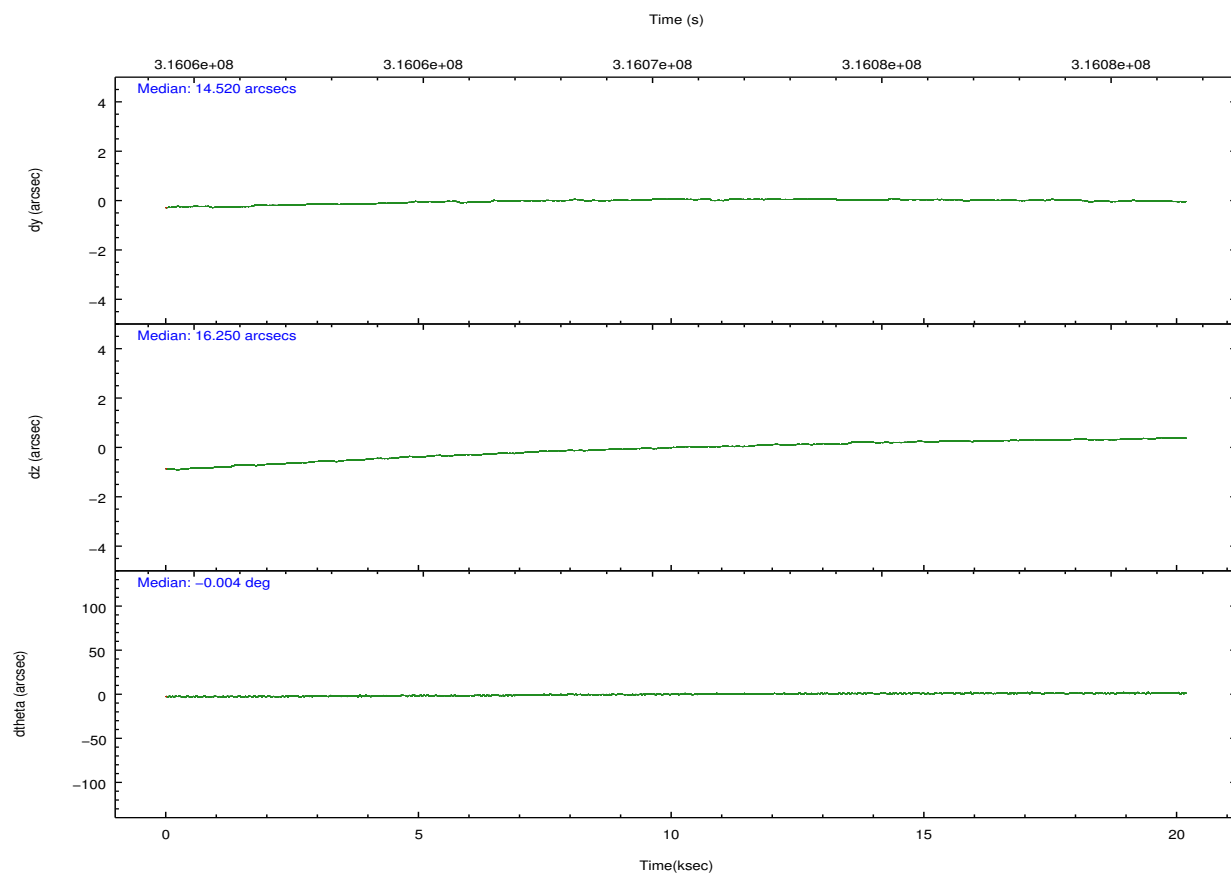
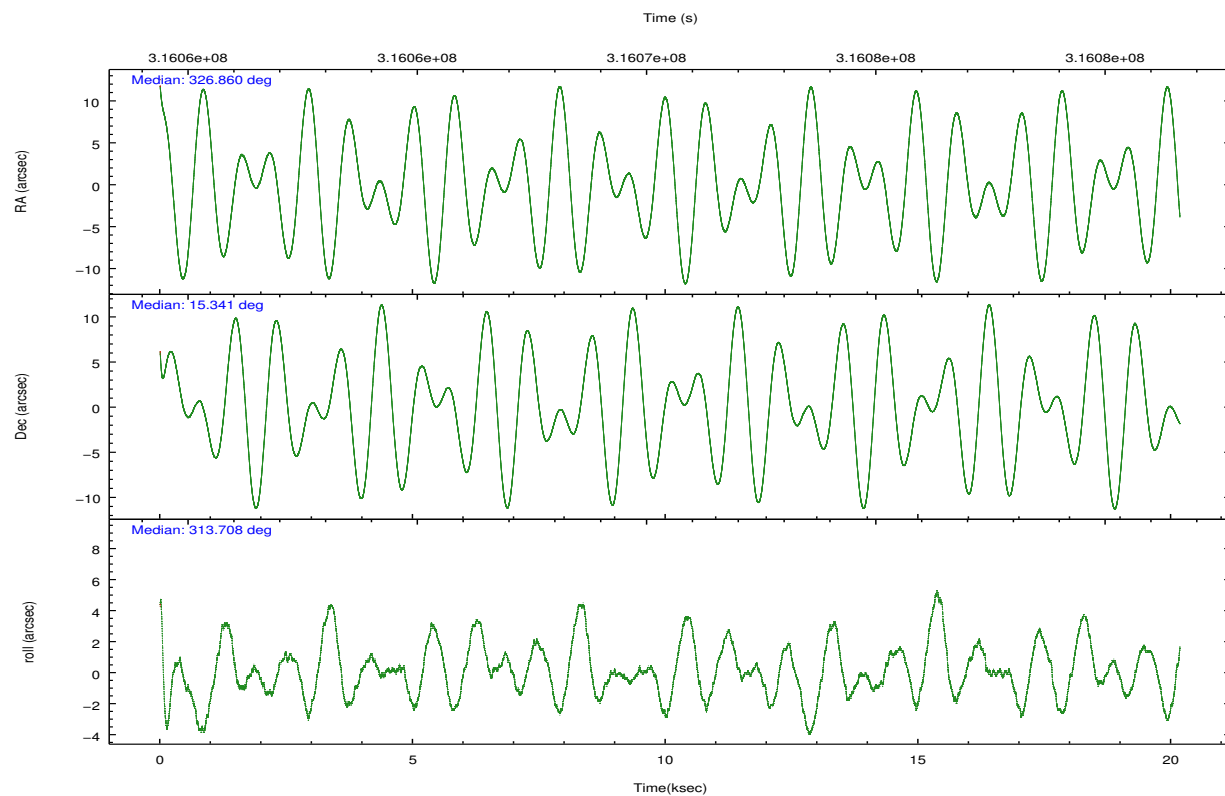
	ccd 3	ccd 6	ccd 7	ccd 8
grade 0 events	9860	9632	9608	17586
	5%	4%	3%	7%
grade 1 events	137	101	291	169
	0%	0%	0%	0%
grade 2 events	4585	5110	22569	12892
	2%	2%	8%	5%
grade 3 events	2258	2256	9376	6092
	1%	1%	3%	2%
grade 4 events	2133	2233	9412	5696
	1%	1%	3%	2%
grade 5 events	9024	8999	24440	11793
	4%	4%	9%	4%
grade 6 events	4092	4822	59546	14778
	2%	2%	22%	6%
grade 7 events	156571	160410	128310	176954
	82%	82%	48%	71%

2.2 Compared Parameters

Parameter	Planned	Actual	Parameter	Planned	Actual
Instrument	ACIS	ACIS	Obspar format version number	7	7
Detector	ACIS-3678	ACIS-3678	Obspar file type	PREDICTED	ACTUAL
Grating	NONE	NONE	Obspar update status	NONE	UPDATED
Data mode	FAINT	FAINT	CCD I0 on	N	N
Observation mode	POINTING	POINTING	CCD I1 on	N	N
[deg] Pointing RA	326.832546	326.8598868359352	CCD I2 on	N	N
[deg] Pointing Dec	15.348670	15.34137329788369	CCD I3 on	O1	Y
[deg] Pointing Roll	313.562403	313.7117993264756	CCD S0 on	N	N
[mm] SIM focus pos	-0.684267	-0.6828225247311905	CCD S1 on	N	N
[mm] SIM defocus	0	0.001444936568705701	CCD S2 on	O3	Y
[mm] SIM translation stage pos	-190.132523	-190.1400660498719	CCD S3 on	Y	Y
[mm] SIM translation stage offset	0	0.00754346686406393	CCD S4 on	O2	Y
[s] Observation start time (MET)	316060602.184000	316059683.4534	CCD S5 on	N	N
Observation start date	2008-01-07T02:35:37	2008-01-07T02:21:23	Number of optional ACIS chips dropped	0	0
[s] Observation end time (MET)	316080602.184000	316082092.51698	On-chip summing requested	N	N
Observation end date	2008-01-07T08:08:57	2008-01-07T08:34:52	Subarray requested	NONE	NONE
Read mode	TIMED	TIMED	Alternating exposures requested	N	N
			[s] Primary exposure time	0.000000	3.1

2.3 Aspect



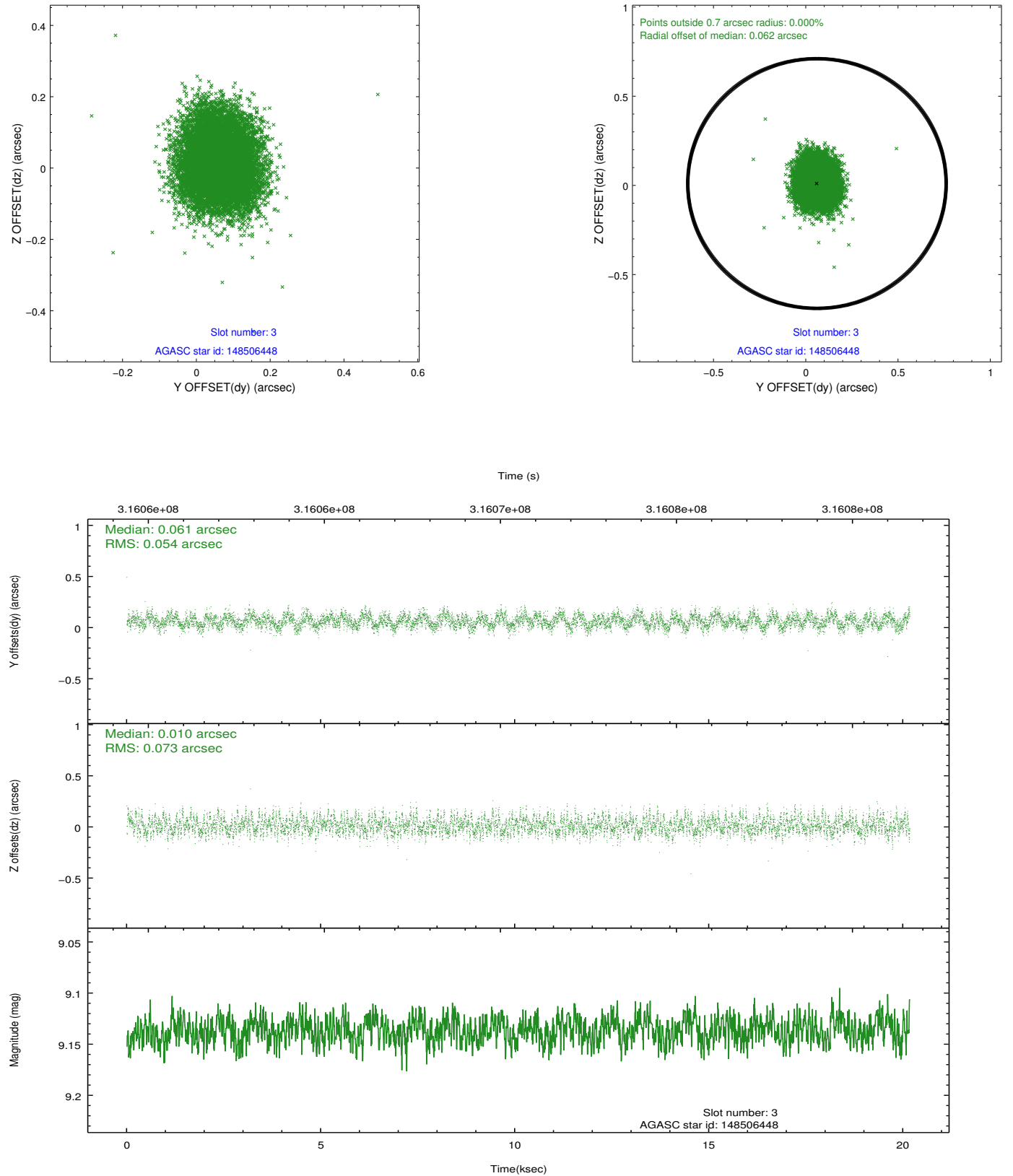


Slot Statistics

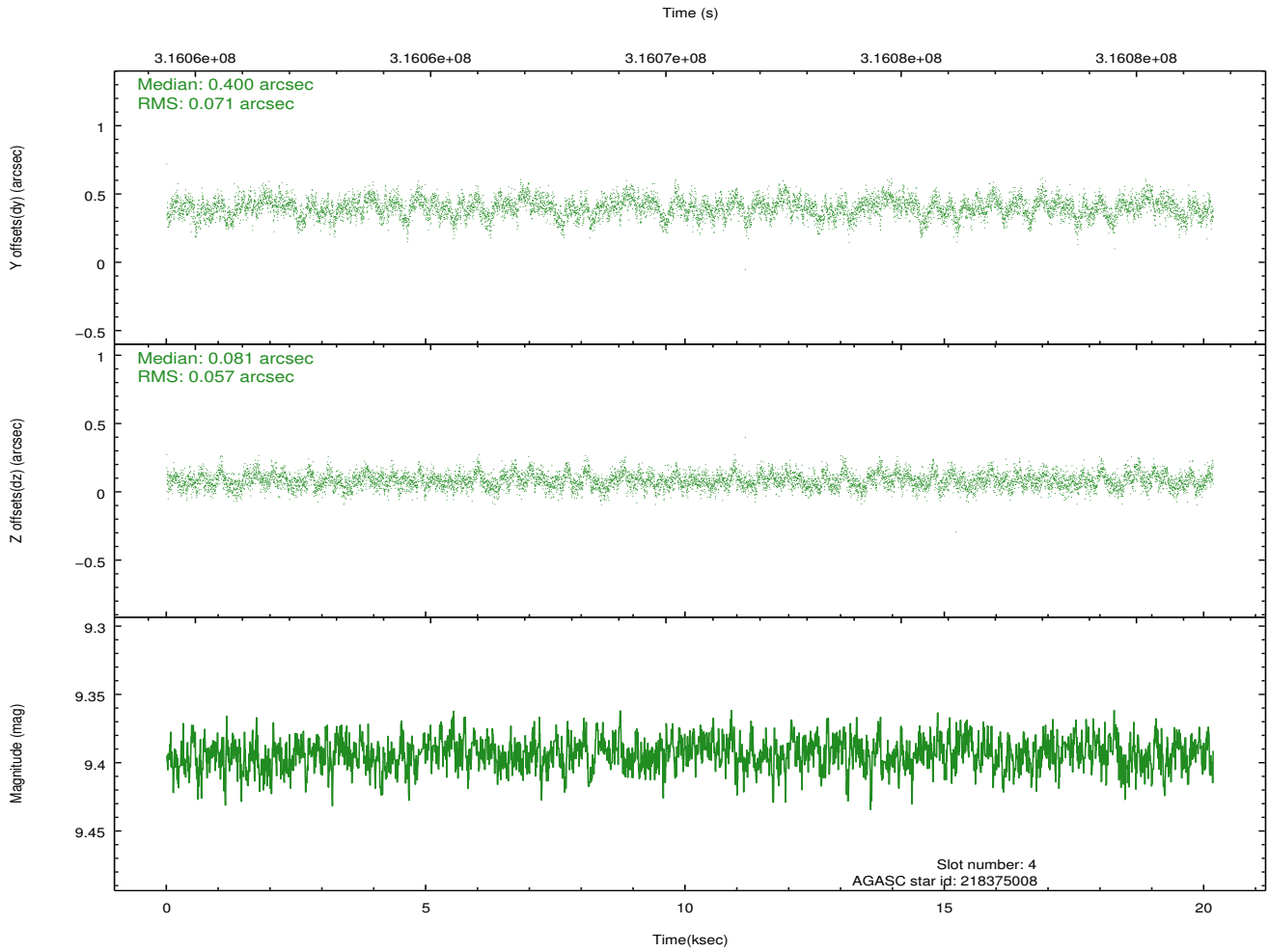
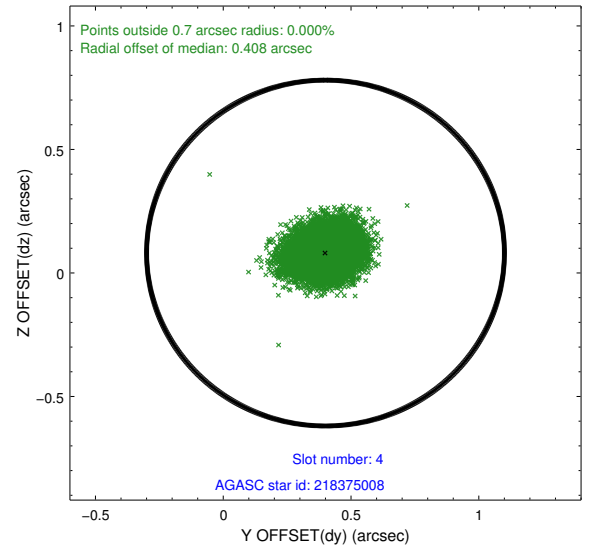
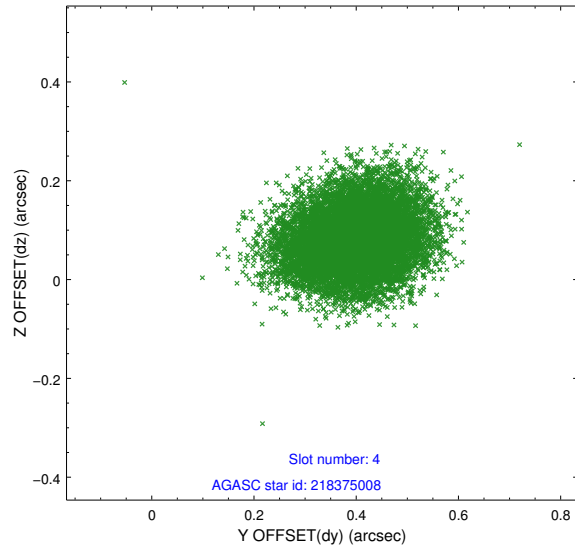
slot	status	id	mag	n_pts	med_dy	med_dz	dr1	dr2	ra	dec	mean_y	mean_z
0	FID	ACIS-S-2	7.09	4922	-0.073	-0.025	0.011	0.016	0.000000	0.000000	-767.52	-1737.58
1	FID	ACIS-S-4	7.18	4922	0.188	0.042	0.008	0.013	0.000000	0.000000	2145.94	170.76
2	FID	ACIS-S-5	7.21	4922	-0.147	-0.008	0.010	0.015	0.000000	0.000000	-1820.19	164.61
3	GUIDE	148506448	9.14	9827	0.061	0.010	0.096	0.155	326.306909	14.920366	-144.09	-2386.03
4	GUIDE	218375008	9.39	9834	0.400	0.081	0.097	0.156	327.715113	15.273767	2303.54	2039.54
5	GUIDE	218369752	7.58	9843	-0.205	-0.147	0.067	0.105	326.451213	15.757707	-1977.91	58.36
6	GUIDE	218368648	8.57	9835	-0.137	0.081	0.061	0.100	326.551307	15.998340	-2366.25	906.96
7	GUIDE	218367600	8.00	9837	-0.117	-0.028	0.067	0.103	327.433545	15.608434	755.94	2156.58

2.4 Star Slots

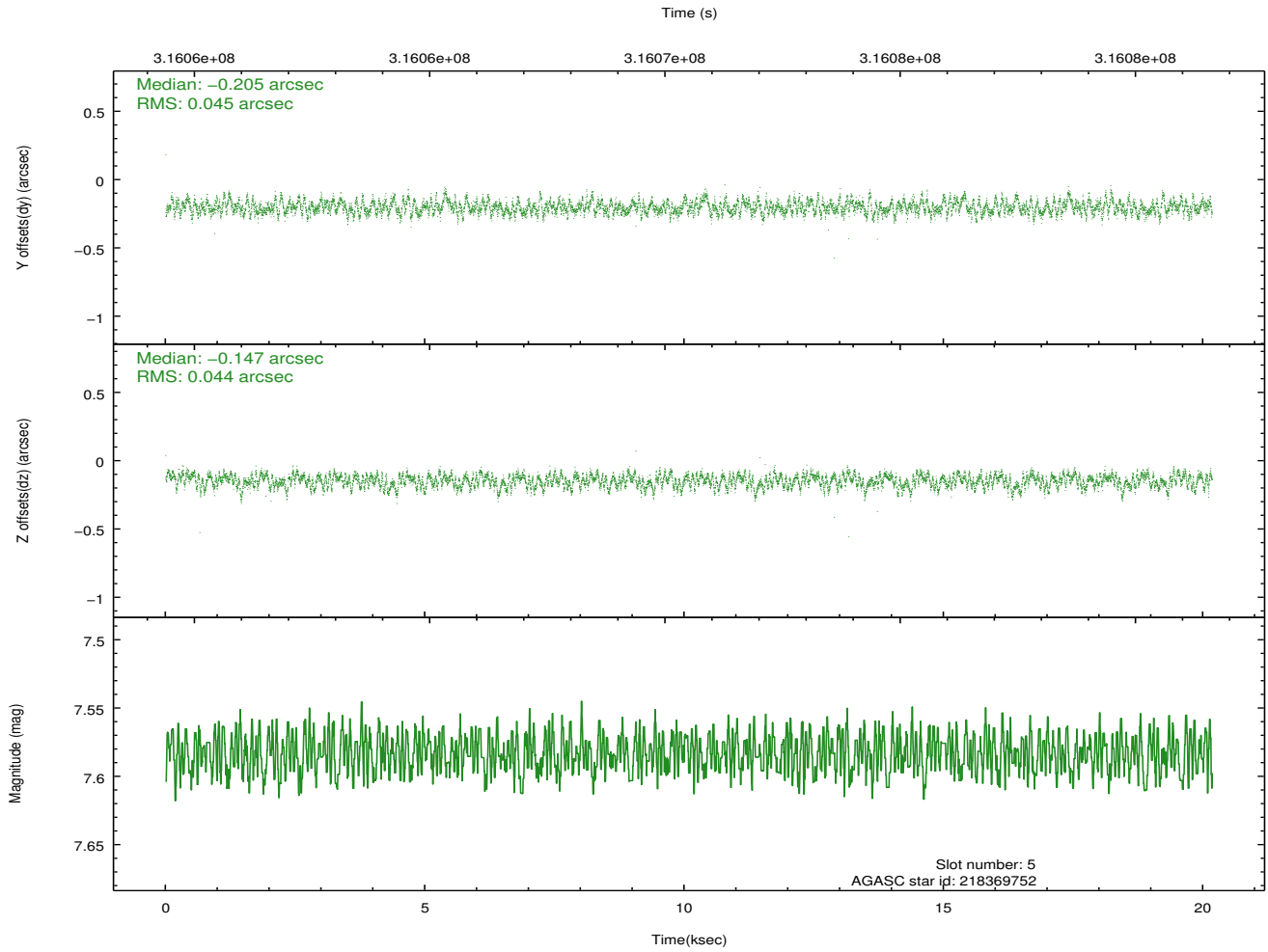
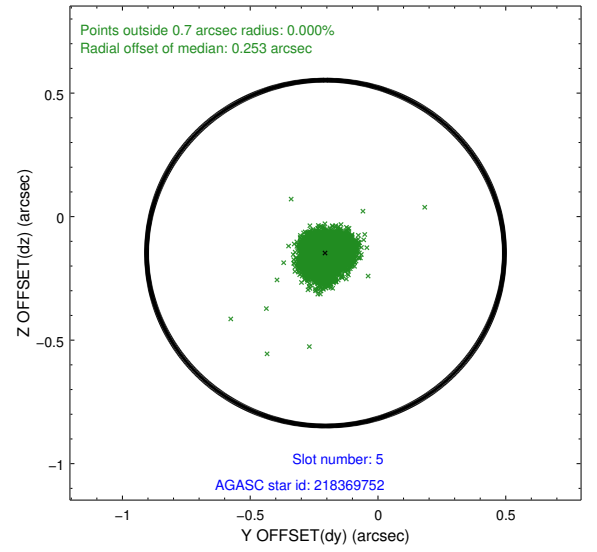
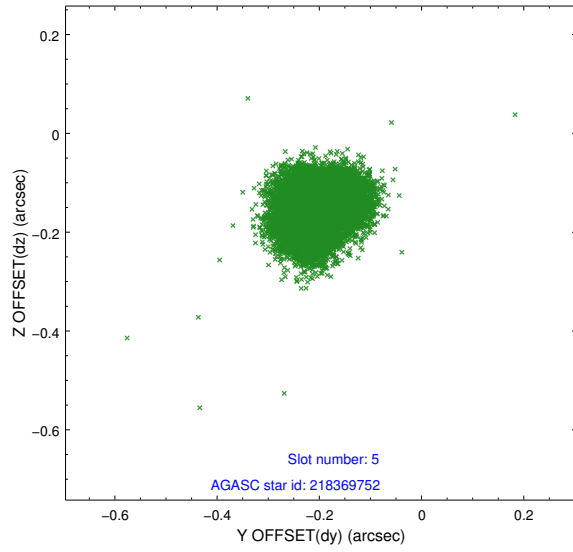
2.4.1 Slot 3



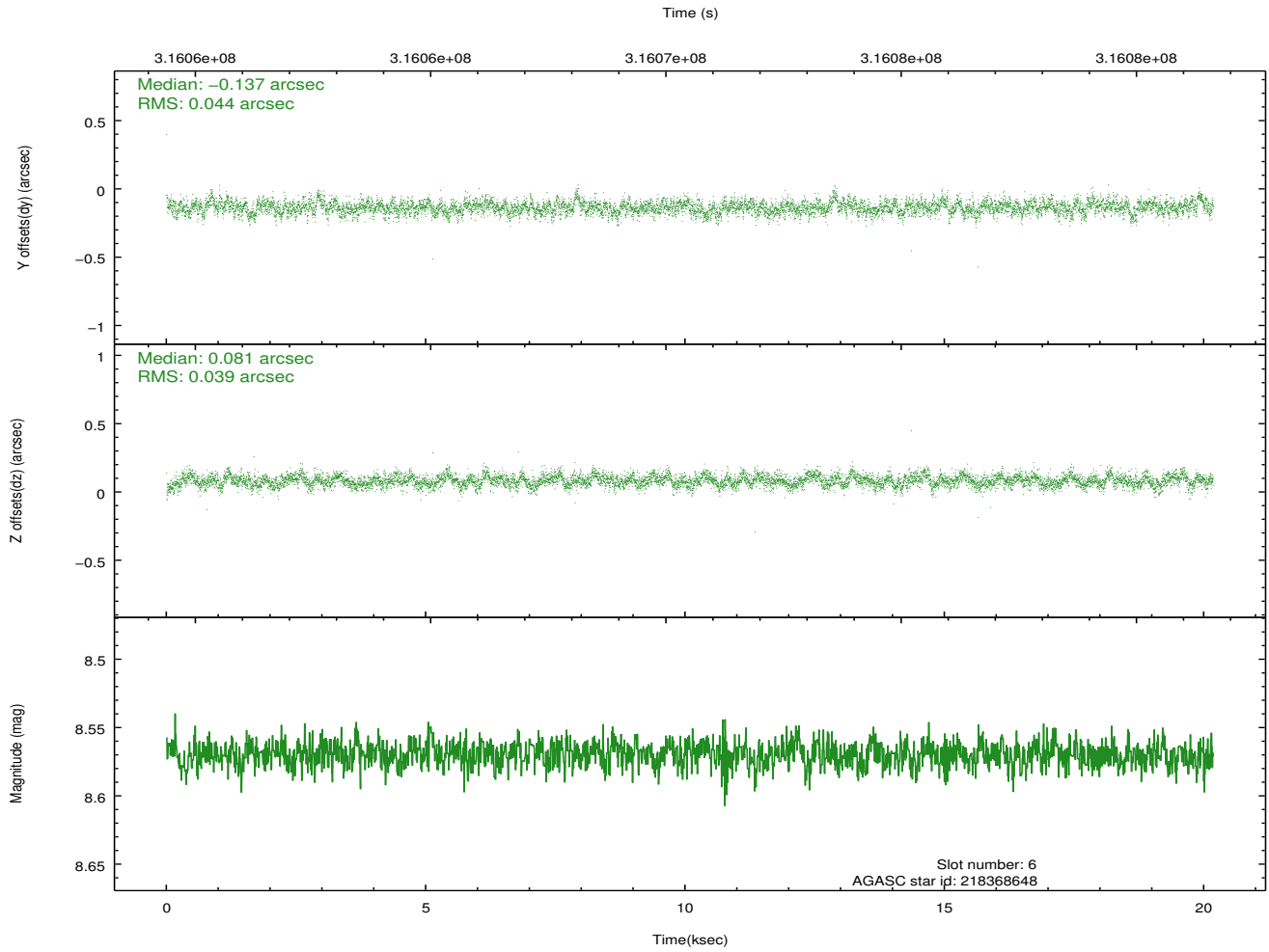
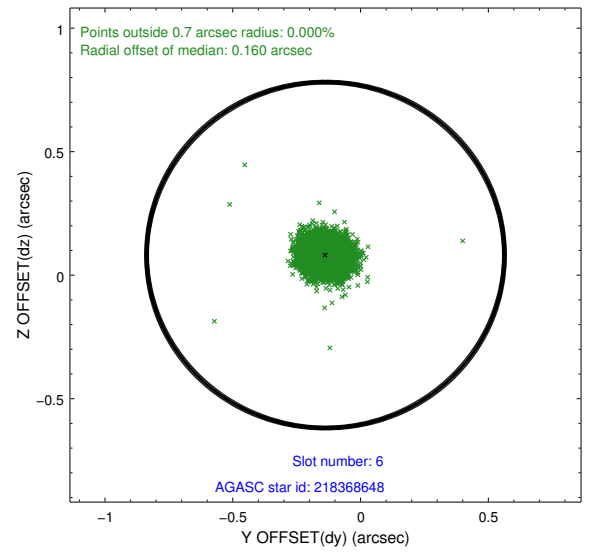
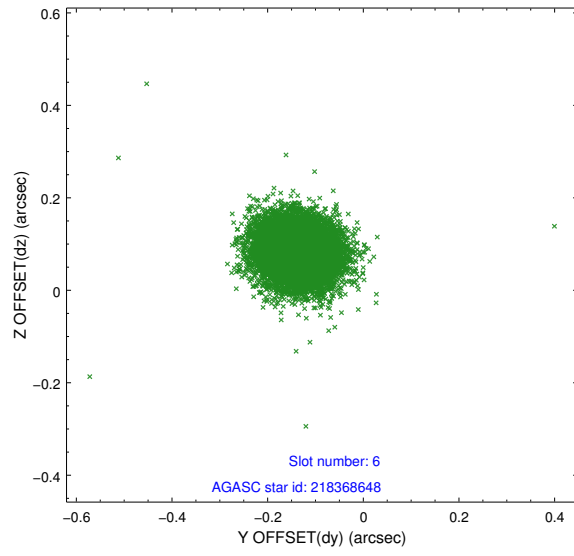
2.4.2 Slot 4



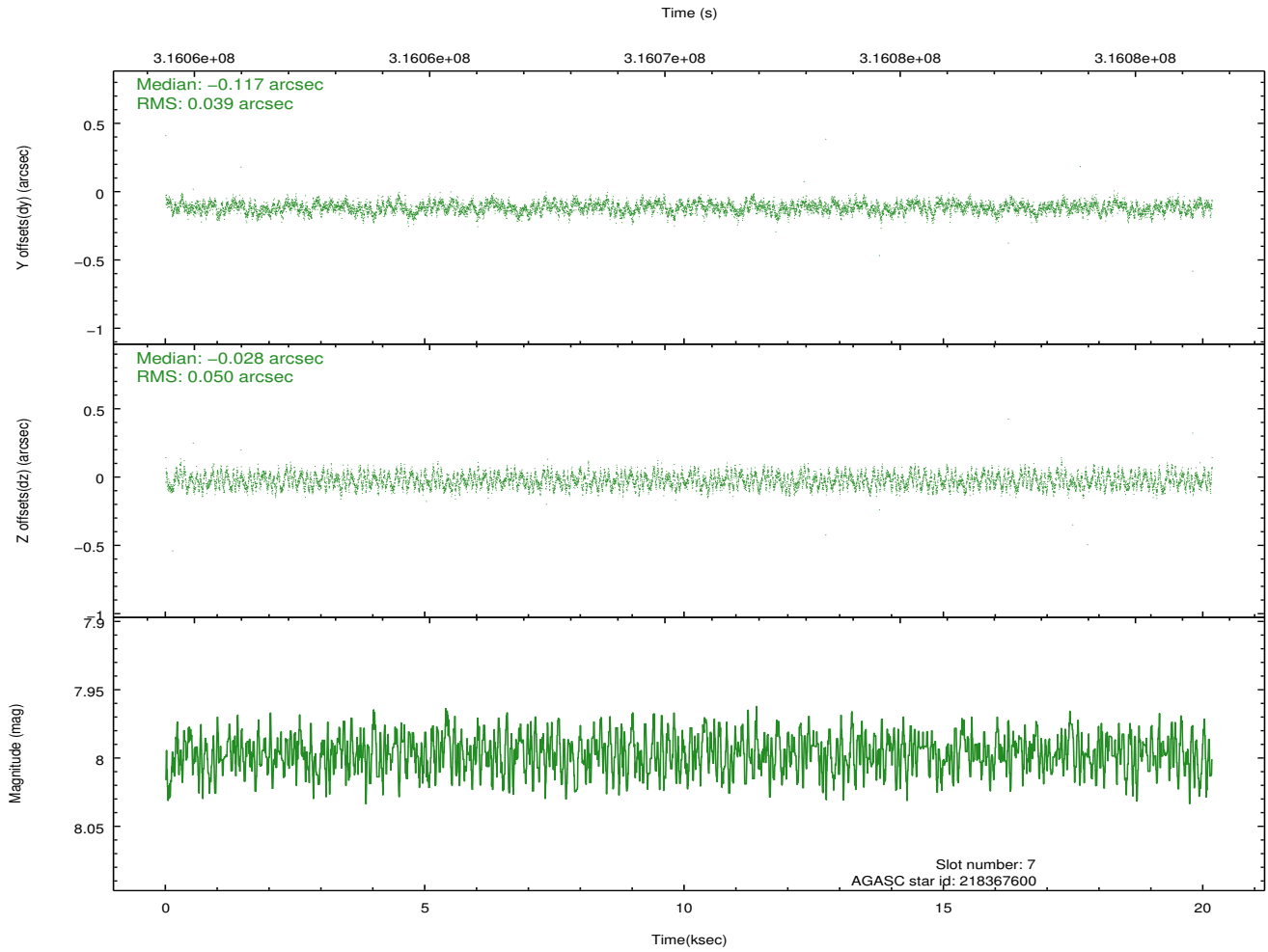
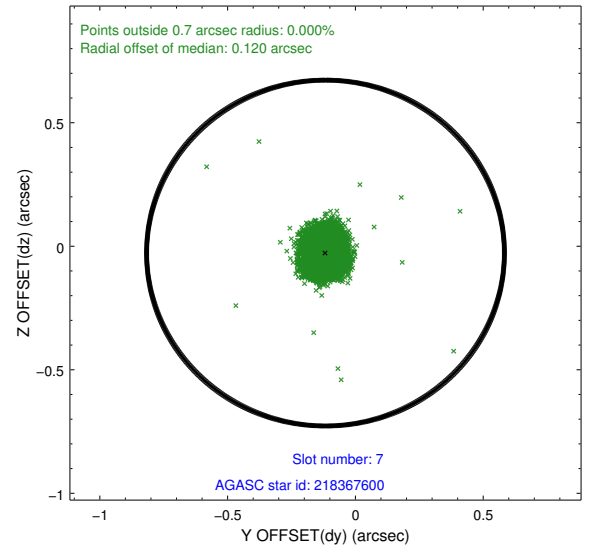
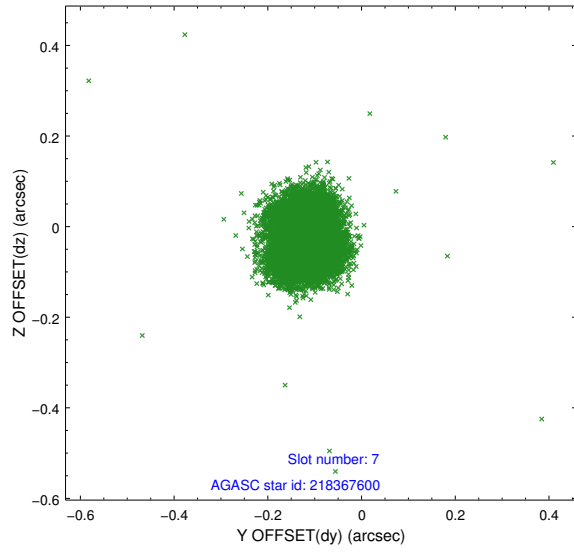
2.4.3 Slot 5



2.4.4 Slot 6

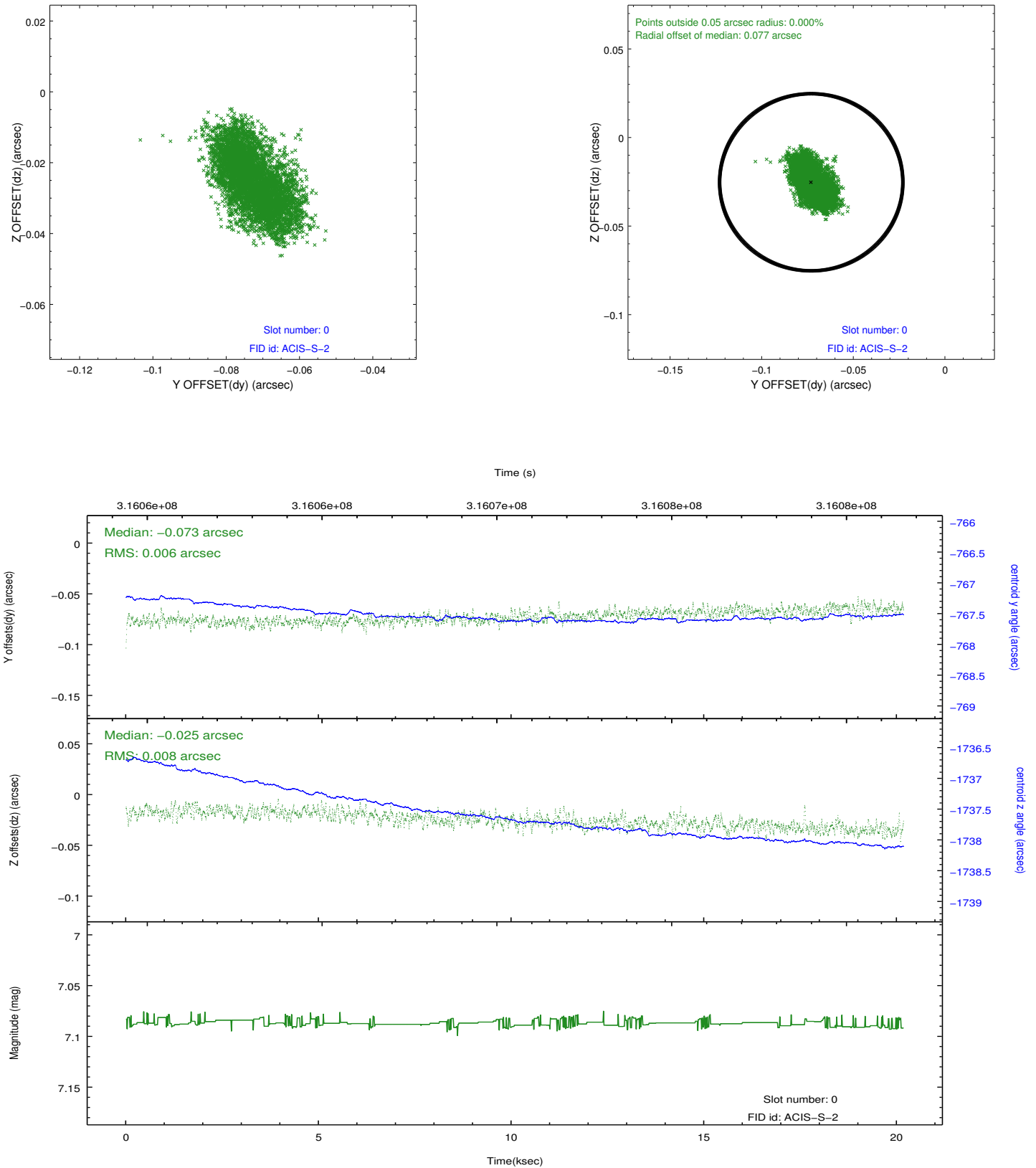


2.4.5 Slot 7

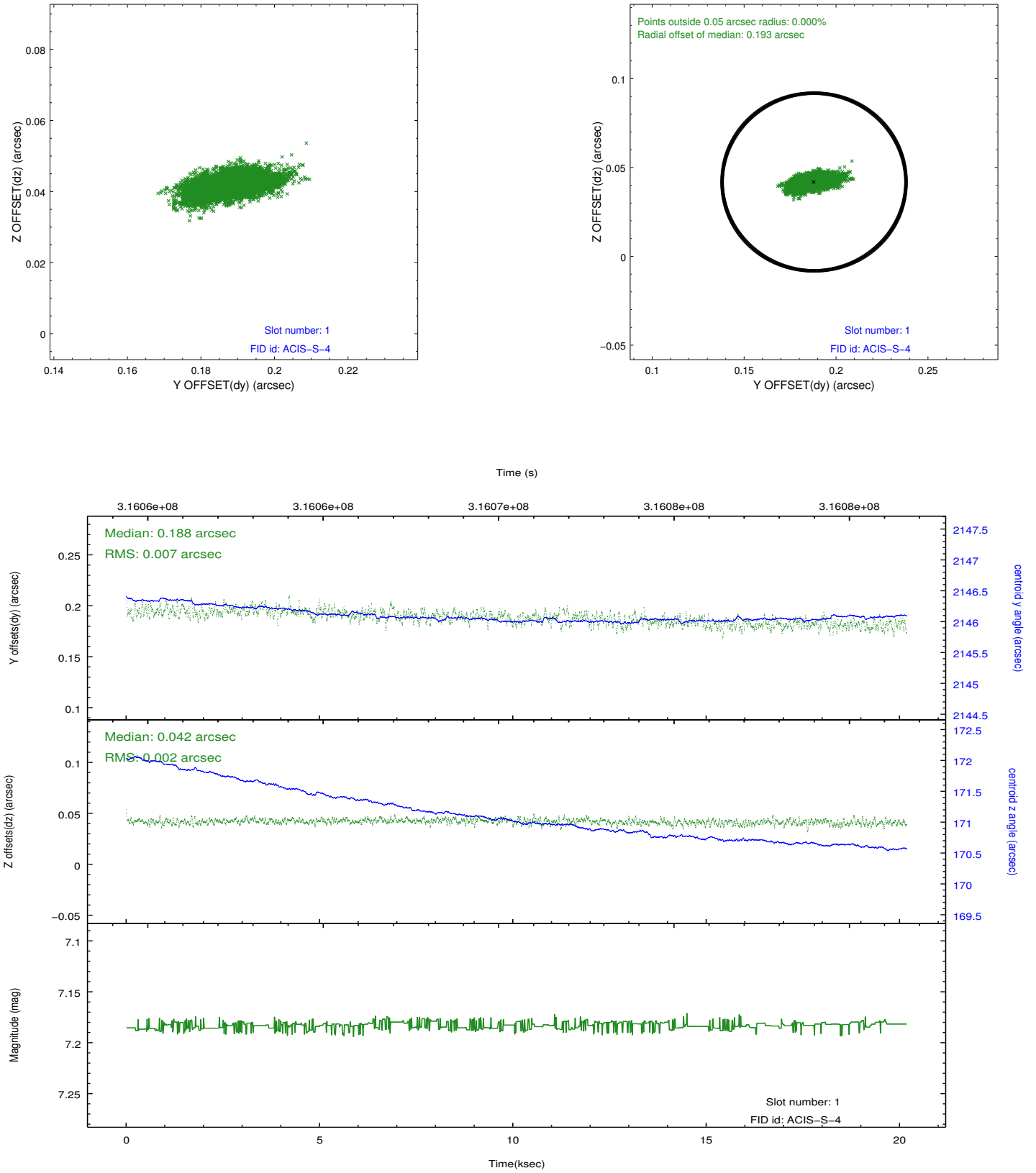


2.5 FID Slots

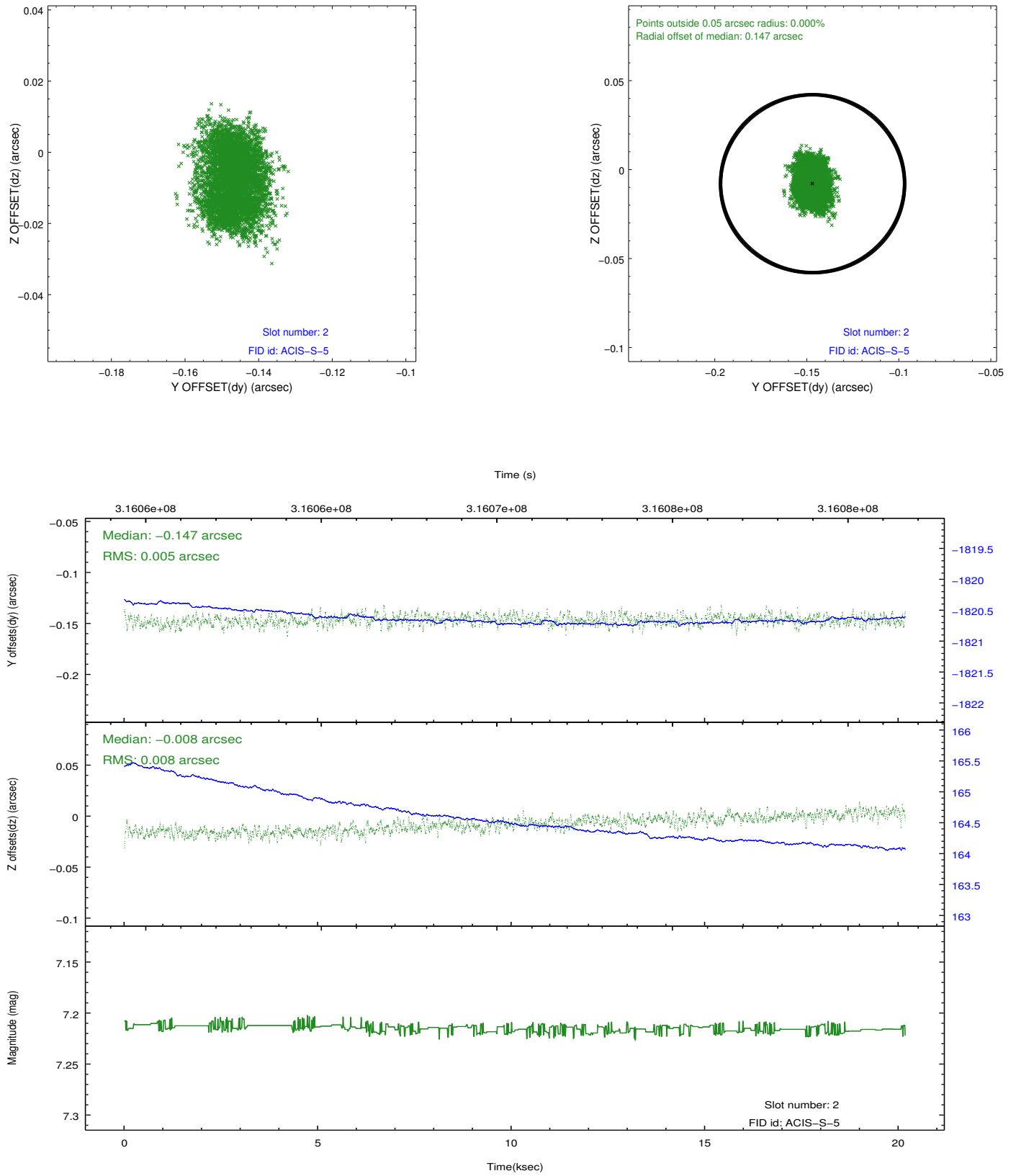
2.5.1 Slot 0



2.5.2 Slot 1



2.5.3 Slot 2



A Summary

A.1 Status

V&V Scientist	Joy Nichols
V&V Date (YYYY-MM-DD)	2012.05.09
V&V Edition	1
V&V Disposition and Status	OK
V&V Charge Time	20.1407001

A.2 Comments