

# V&V Reference Report

## L2 ASCDS Version : 8.4.4

Observation 9229 - L2 Version 2  
Chandra X-Ray Center

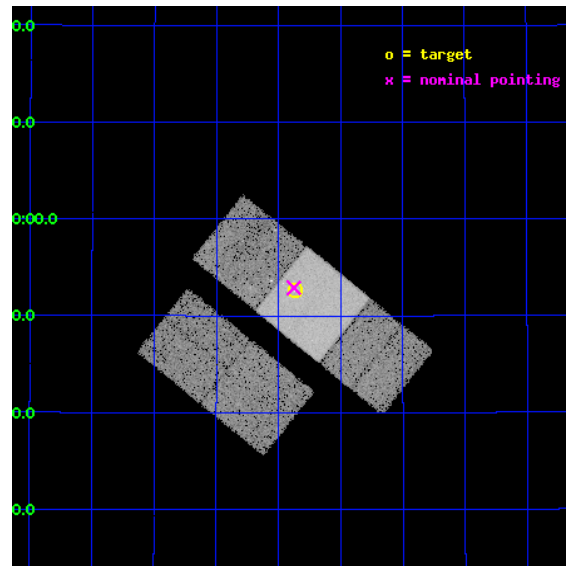
L2 Processing Date : May 7 2012

## Contents

<b>1</b>	<b>Front</b>	<b>2</b>
<b>2</b>	<b>OBI</b>	<b>3</b>
2.1	OBI . . . . .	3
2.1.1	Images . . . . .	3
2.1.2	Bias . . . . .	3
2.1.3	Parameters . . . . .	4
2.1.4	Events . . . . .	4
2.2	Compared Parameters . . . . .	5
2.3	Aspect . . . . .	6
2.4	Star Slots . . . . .	9
2.4.1	Slot 3 . . . . .	9
2.4.2	Slot 4 . . . . .	10
2.4.3	Slot 5 . . . . .	11
2.4.4	Slot 6 . . . . .	12
2.4.5	Slot 7 . . . . .	13
2.5	FID Slots . . . . .	14
2.5.1	Slot 0 . . . . .	14
2.5.2	Slot 1 . . . . .	15
2.5.3	Slot 2 . . . . .	16
<b>A</b>	<b>Summary</b>	<b>17</b>
A.1	Status . . . . .	17
A.2	Comments . . . . .	17

# 1 Front

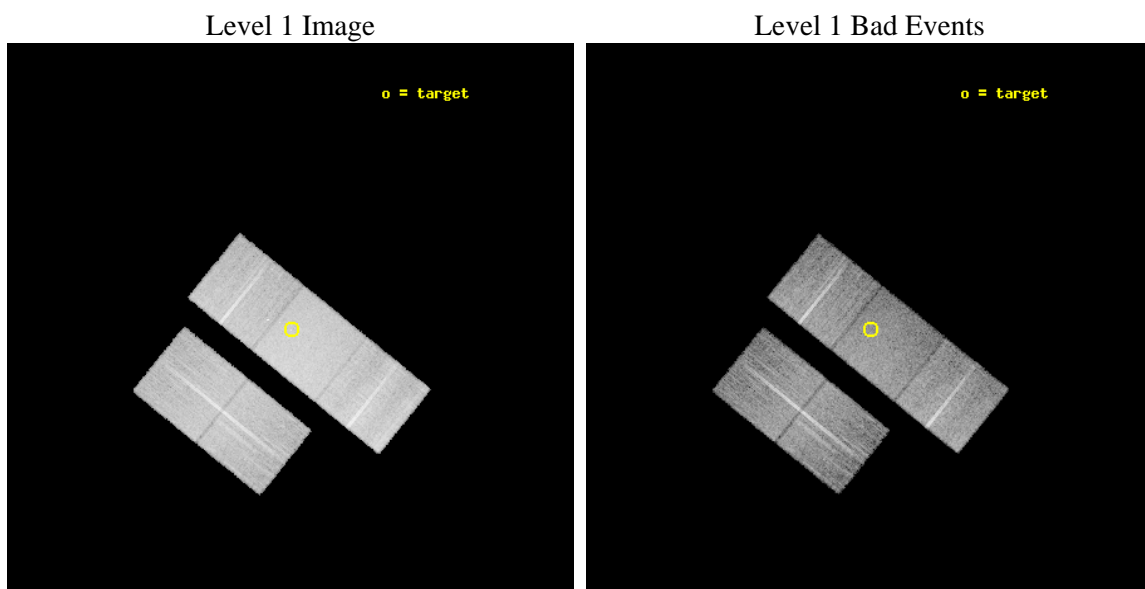
seq_num	701670	Sequence number
obs_id	9229	Observation id
title	Deconstructing the Accretion Disk Wind in Quasars	Proposal title
observer	Dr. Gordon Richards	Principal investigator
object	SDSS J1626+2952	Source name
dtcycle	0	&#160
cycle	P	events from which exps? Prim/Second/Both
ra_targ	246.592083	Observer's specified target RA [deg]
dec_targ	29.877056	Observer's specified target Dec [deg]
ra_nom	246.5940134391	Nominal RA [deg]
dec_nom	29.881648888043	Nominal Dec [deg]
roll_nom	38.958947210432	Nominal Roll [deg]
revision	2	Processing version of data
ontime	11482.40008831	Sum of GTIs [s]
livetime	11332.374077936	Livetime [s]
ontime2	11482.40008831	Sum of GTIs [s]
ontime3	11482.40008831	Sum of GTIs [s]
ontime6	11482.40008831	Sum of GTIs [s]
ontime7	11482.40008831	Sum of GTIs [s]
ontime8	11482.40008831	Sum of GTIs [s]
l2events	116525	Number of level 2 events



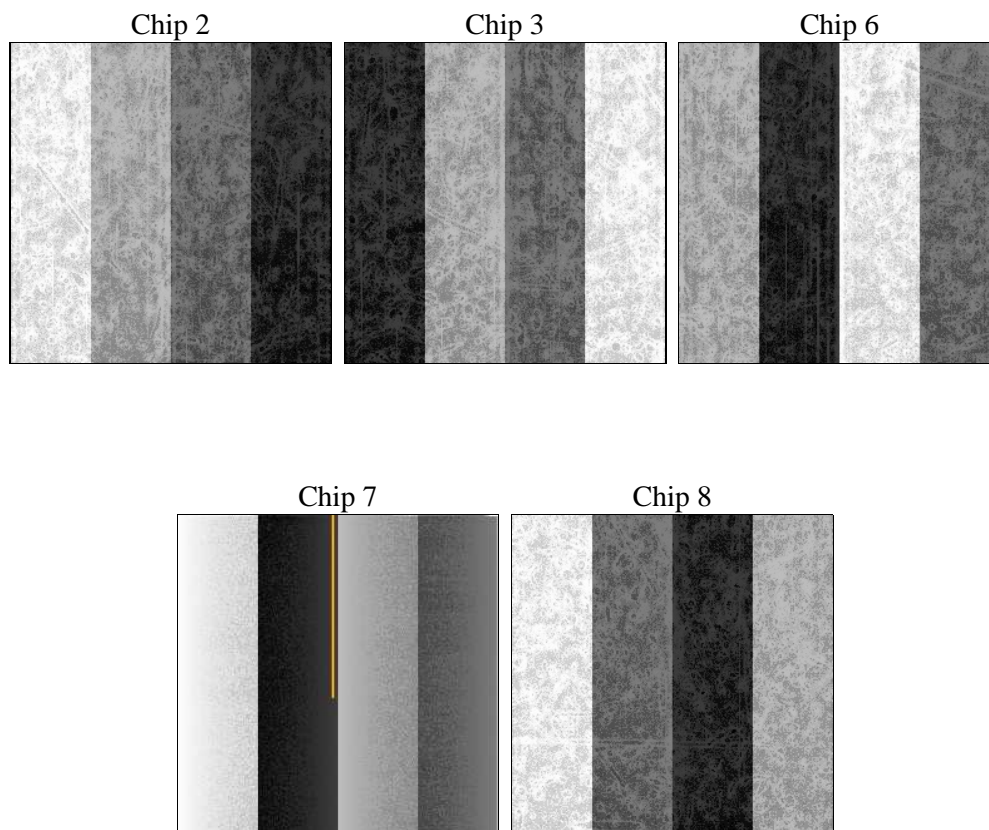
## 2 OBI

### 2.1 OBI

#### 2.1.1 Images



#### 2.1.2 Bias



### 2.1.3 Parameters

obi_num	0	Obi number	sched_exp_time	11300.000000	[s] Scheduled observation exposure time
ascdsver	8.4.4	Processing system revision	ontime	11482.40008831	Sum of GTIs [s]
caldsver	4.4.9	&#160	ontime2	11482.40008831	Sum of GTIs [s]
date	2012-05-07T14:37:19	Date and time of file creation	ontime3	11482.40008831	Sum of GTIs [s]
revision	2	Processing version of data	ontime6	11482.40008831	Sum of GTIs [s]
			ontime7	11482.40008831	Sum of GTIs [s]
			ontime8	11482.40008831	Sum of GTIs [s]
			l1events	699196	Number of level 1 events

### 2.1.4 Events

	ccd 2	ccd 3	ccd 6	ccd 7	ccd 8
level 1 events	121432	119600	126442	171613	160109
rejected events	107577	105624	111691	104481	126039
rejected %	88%	88%	88%	60%	78%

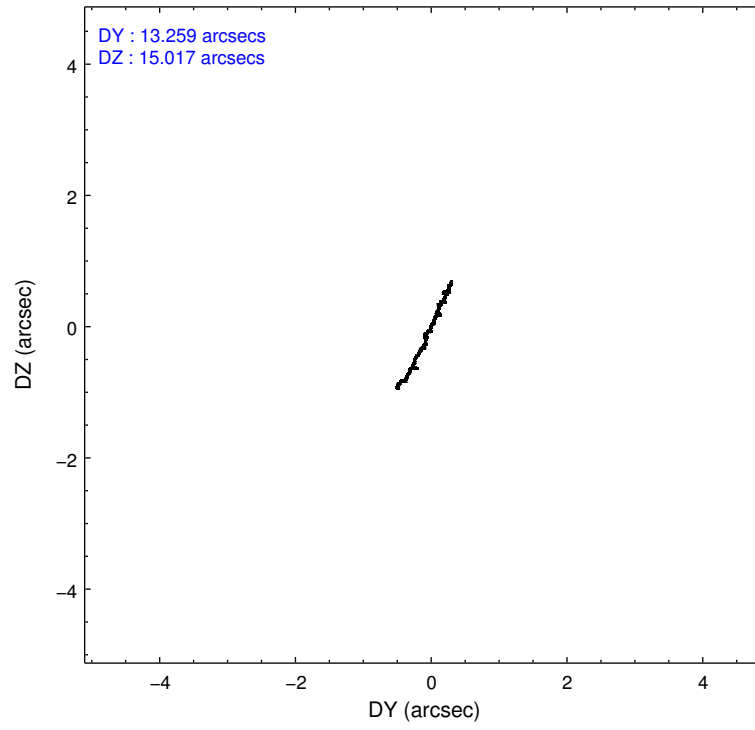
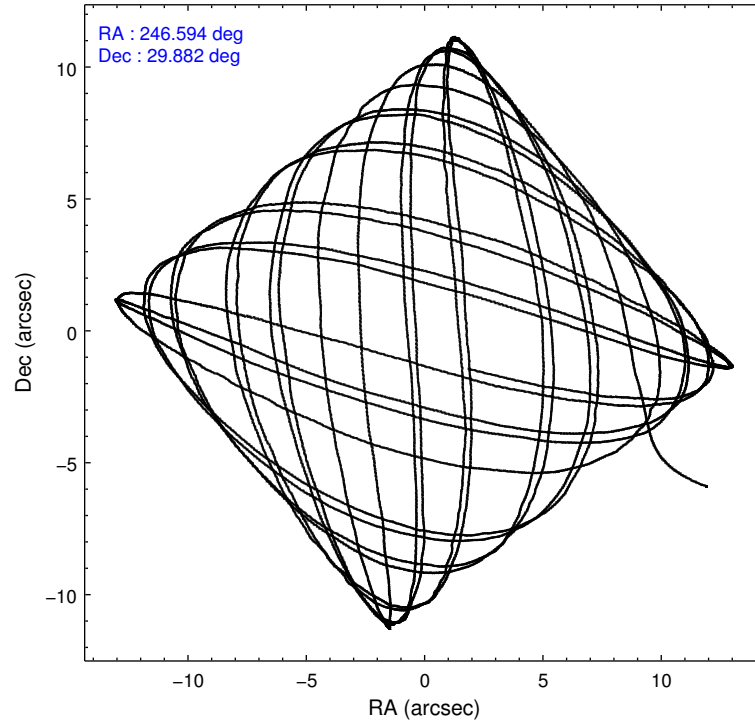
	ccd 2	ccd 3	ccd 6	ccd 7	ccd 8
grade 0 events	6490	6433	6330	6140	11476
	5%	5%	5%	3%	7%
grade 1 events	89	78	80	188	127
	0%	0%	0%	0%	0%
grade 2 events	3145	2987	3435	14835	8260
	2%	2%	2%	8%	5%
grade 3 events	1372	1428	1428	5969	3817
	1%	1%	1%	3%	2%
grade 4 events	1387	1442	1428	5879	3550
	1%	1%	1%	3%	2%
grade 5 events	4820	5614	5925	15885	7926
	3%	4%	4%	9%	4%
grade 6 events	2463	2666	3121	39060	9352
	2%	2%	2%	22%	5%
grade 7 events	101666	98952	104695	83657	115601
	83%	82%	82%	48%	72%

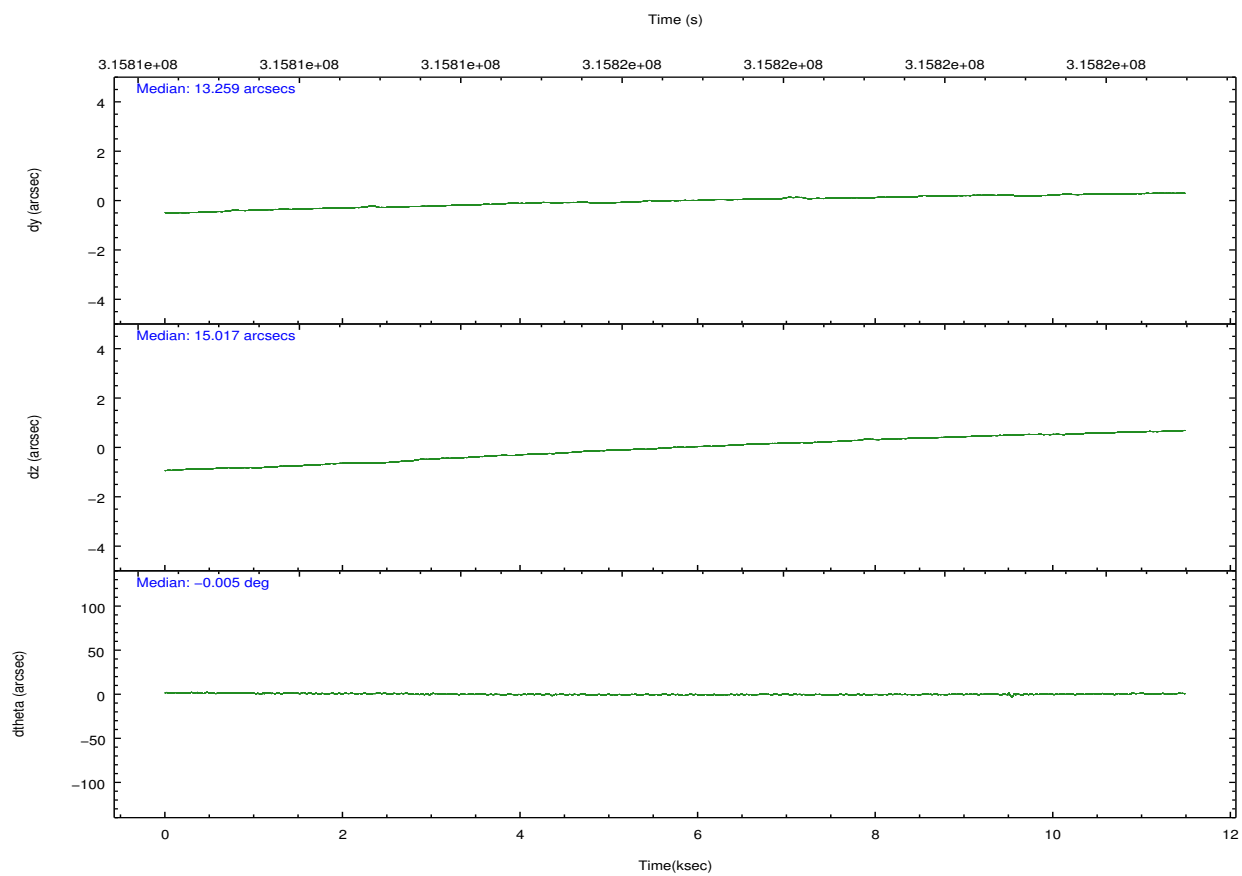
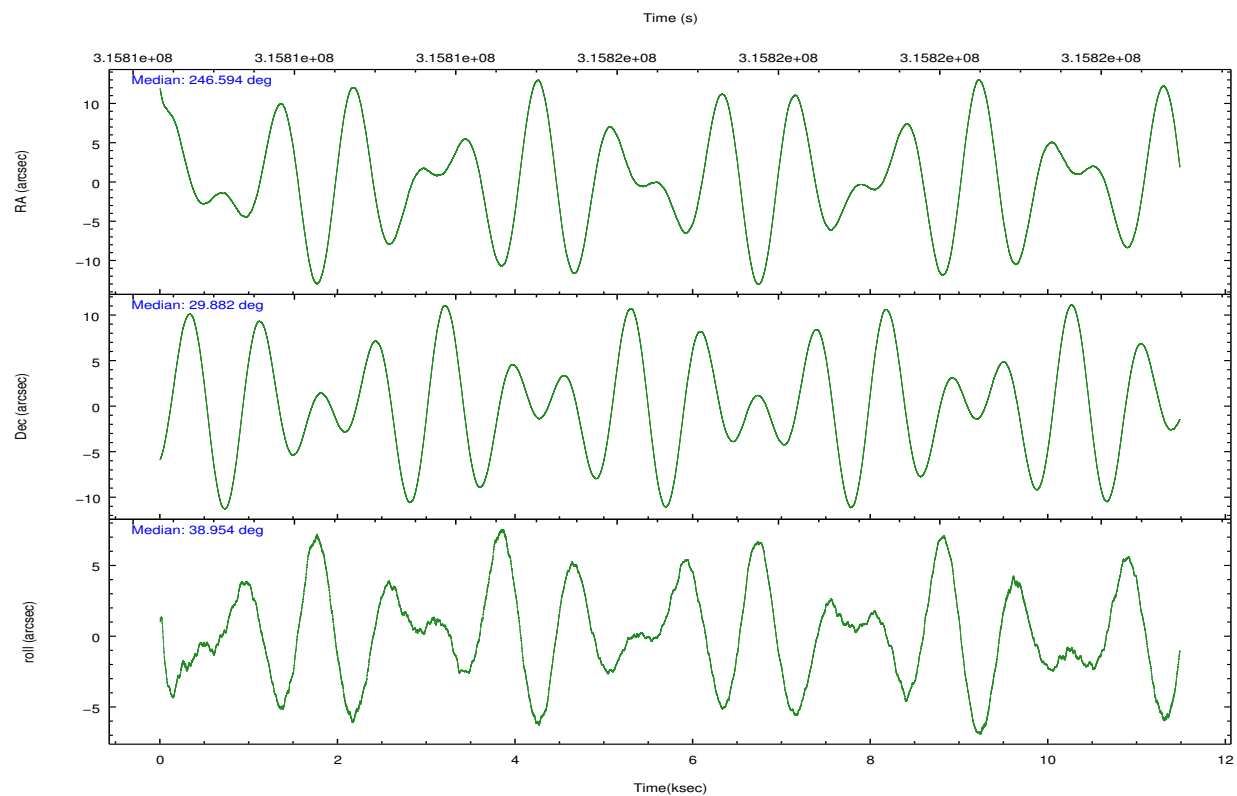


## 2.2 Compared Parameters

Parameter	Planned	Actual	Parameter	Planned	Actual
Instrument	ACIS	ACIS	Obspar format version number	7	7
Detector	ACIS-23678	ACIS-23678	Obspar file type	PREDICTED	ACTUAL
Grating	NONE	NONE	Obspar update status	NONE	UPDATED
Data mode	FAINT	FAINT	CCD I0 on	N	N
Observation mode	POINTING	POINTING	CCD I1 on	N	N
[deg] Pointing RA	246.583027	246.5940134390995	CCD I2 on	O1	Y
[deg] Pointing Dec	29.855976	29.88164888804322	CCD I3 on	Y	Y
[deg] Pointing Roll	38.807787	38.95894721043152	CCD S0 on	N	N
[mm] SIM focus pos	-0.684267	-0.6828225247311905	CCD S1 on	N	N
[mm] SIM defocus	0	0.001444936568705701	CCD S2 on	Y	Y
[mm] SIM translation stage pos	-190.132523	-190.1400660498719	CCD S3 on	Y	Y
[mm] SIM translation stage offset	0	0.00754346686406393	CCD S4 on	Y	Y
[s] Observation start time (MET)	315811101.184000	315809695.16629	CCD S5 on	N	N
Observation start date	2008-01-04T05:17:16	2008-01-04T04:54:55	Number of optional ACIS chips dropped	0	0
[s] Observation end time (MET)	315822401.184000	315823275.90445	On-chip summing requested	N	N
Observation end date	2008-01-04T08:25:36	2008-01-04T08:41:15	Subarray requested	NONE	NONE
Read mode	TIMED	TIMED	Alternating exposures requested	N	N
			[s] Primary exposure time	0.000000	3.1

## 2.3 Aspect



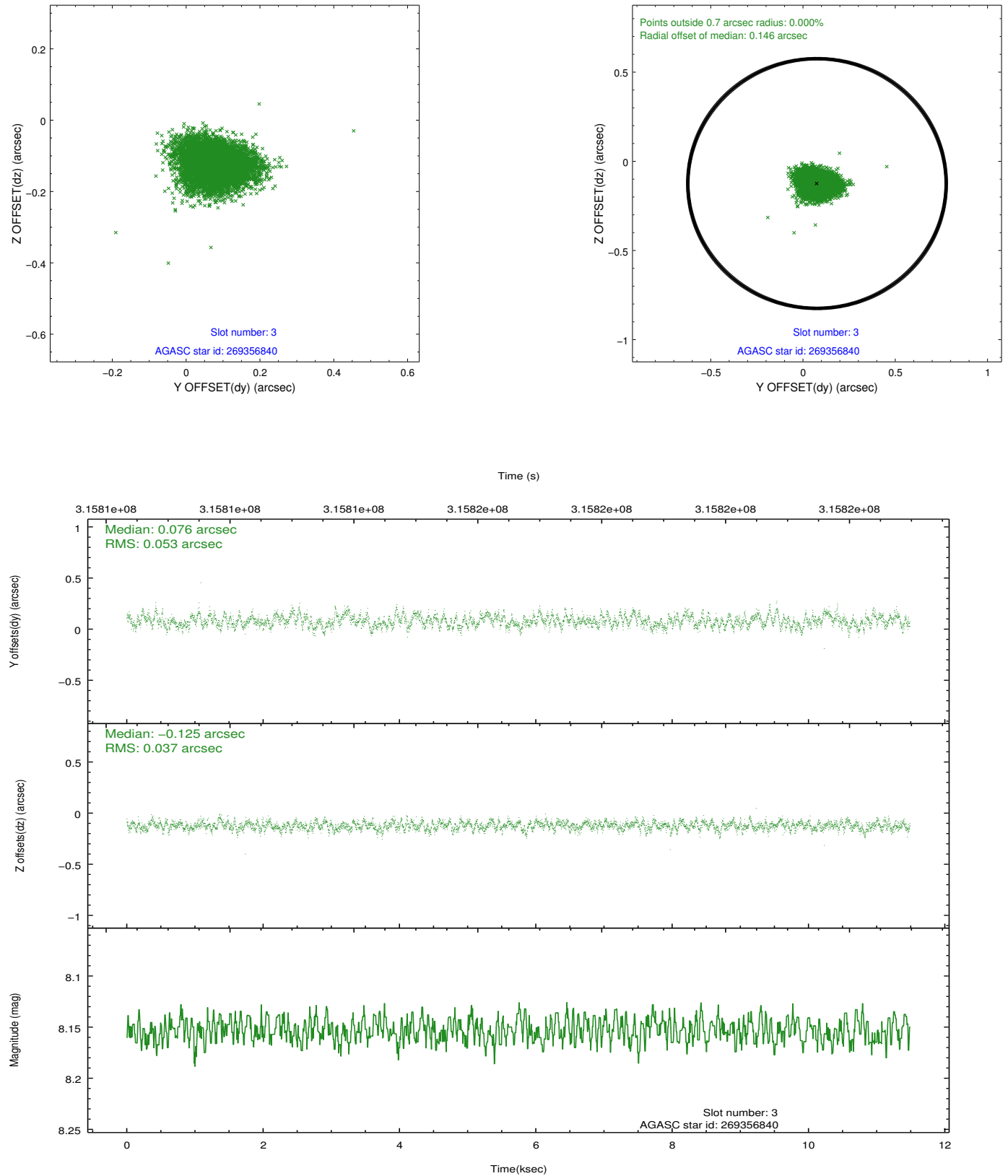


### Slot Statistics

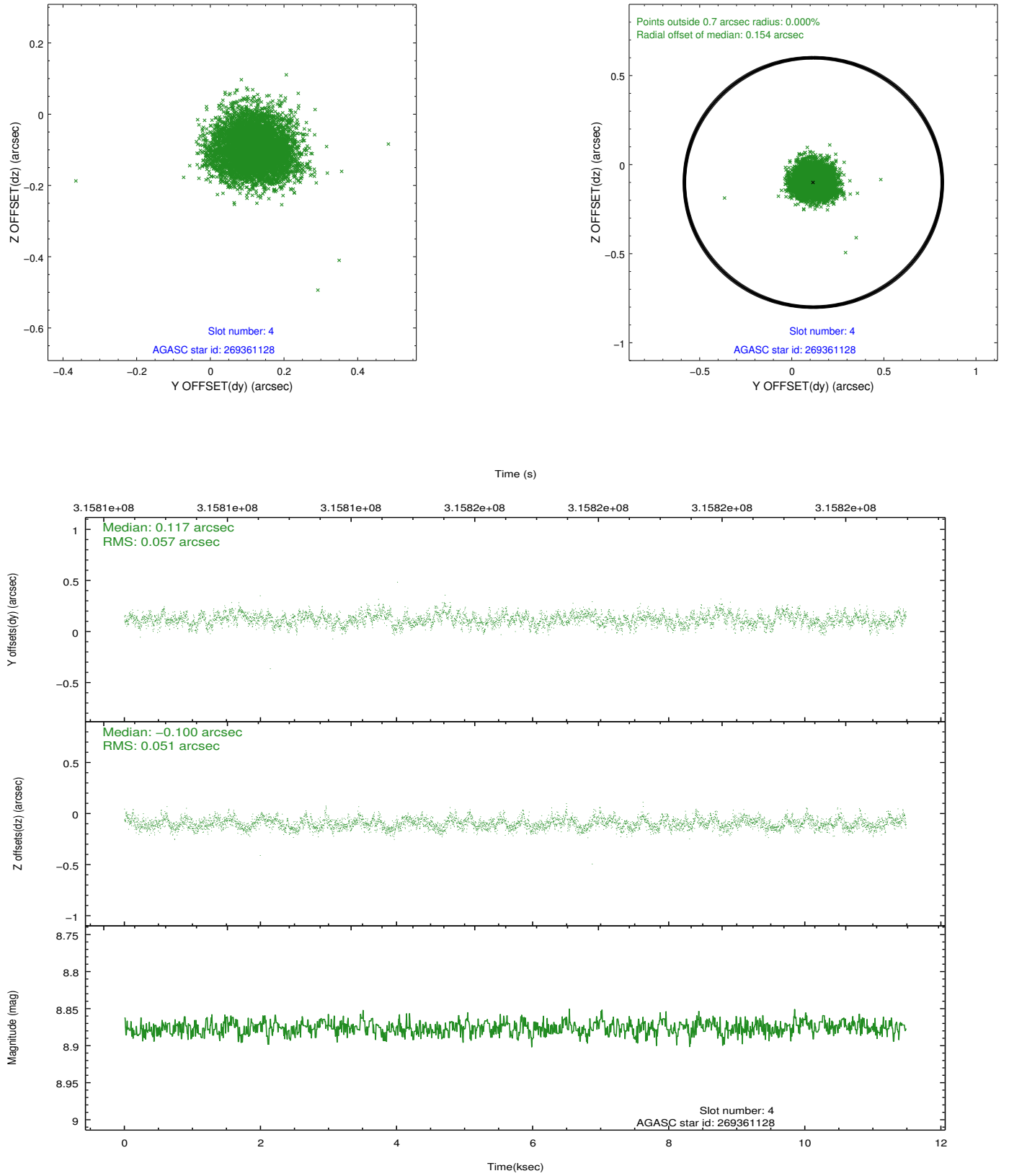
slot	status	id	mag	n_pts	med_dy	med_dz	dr1	dr2	ra	dec	mean_y	mean_z
0	FID	ACIS-S-2	7.09	2802	-0.056	-0.035	0.011	0.020	0.000000	0.000000	-766.17	-1736.38
1	FID	ACIS-S-4	7.19	2802	0.177	0.036	0.015	0.029	0.000000	0.000000	2147.10	171.76
2	FID	ACIS-S-5	7.22	2801	-0.152	0.007	0.013	0.021	0.000000	0.000000	-1818.57	165.85
3	GUIDE	269356840	8.15	5603	0.076	-0.125	0.068	0.112	246.004032	29.615972	-1950.84	465.98
4	GUIDE	269361128	8.88	5601	0.117	-0.100	0.081	0.128	245.711822	29.831818	-2168.50	1645.58
5	GUIDE	269362192	7.10	5604	0.008	0.178	0.049	0.080	246.270797	29.251102	-2128.61	-1080.55
6	GUIDE	269490216	8.86	5601	-0.059	0.125	0.080	0.133	247.040303	29.660736	674.79	-1441.85
7	GUIDE	338314040	9.01	5600	-0.142	-0.077	0.085	0.140	246.451730	30.265127	604.40	1403.50

## 2.4 Star Slots

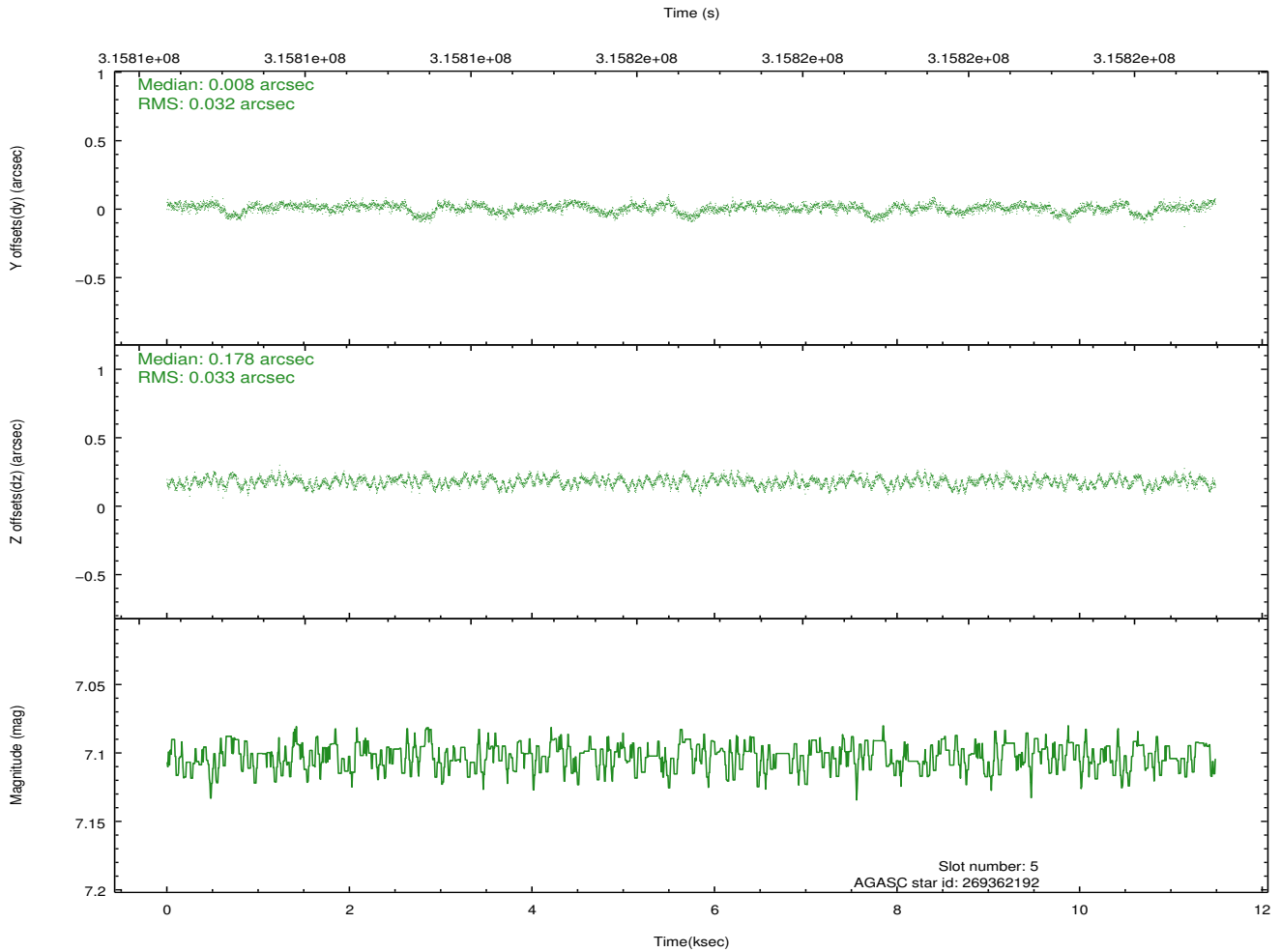
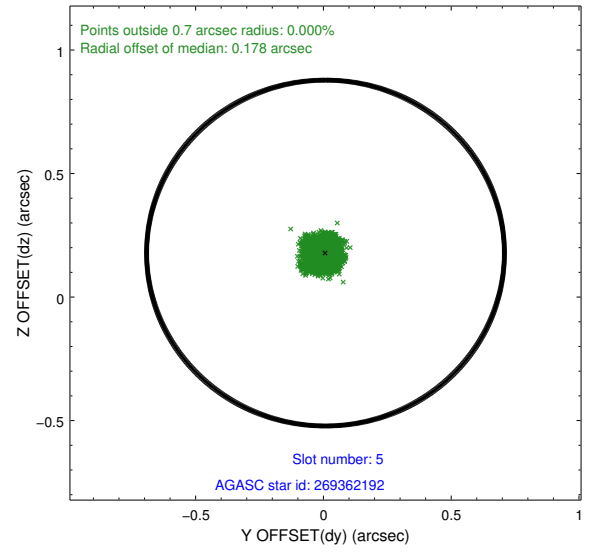
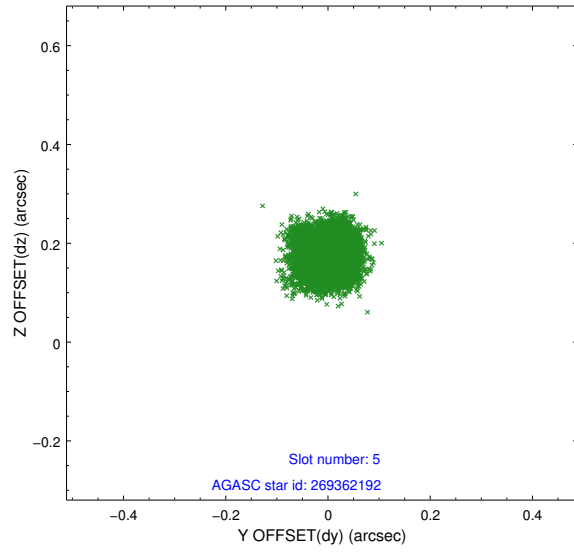
### 2.4.1 Slot 3



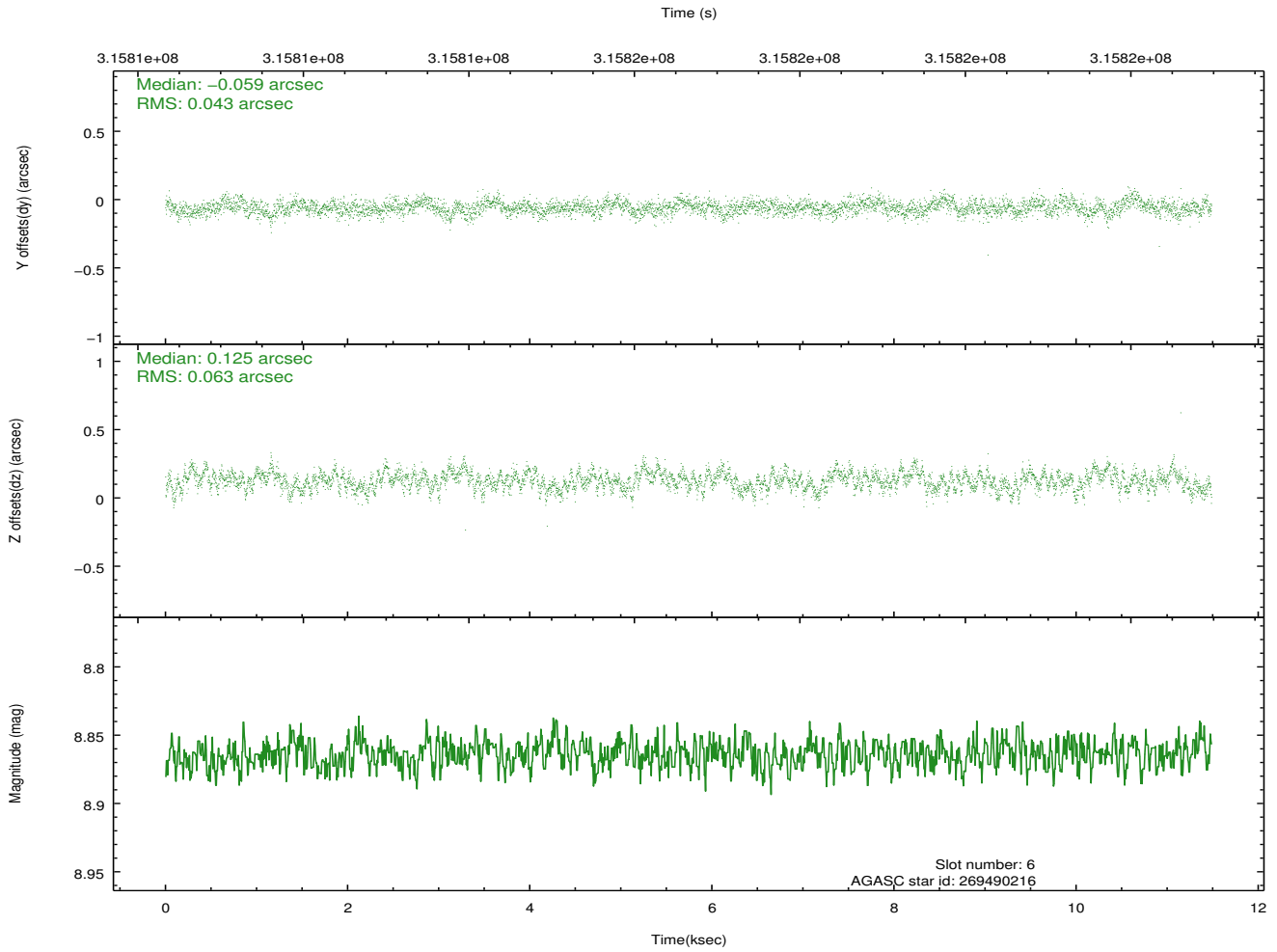
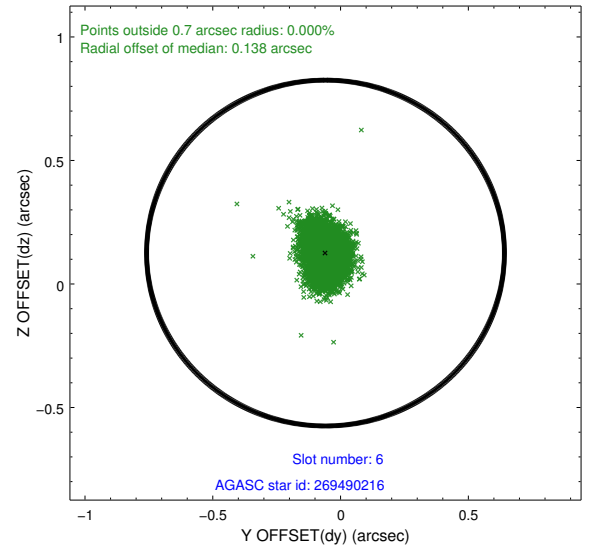
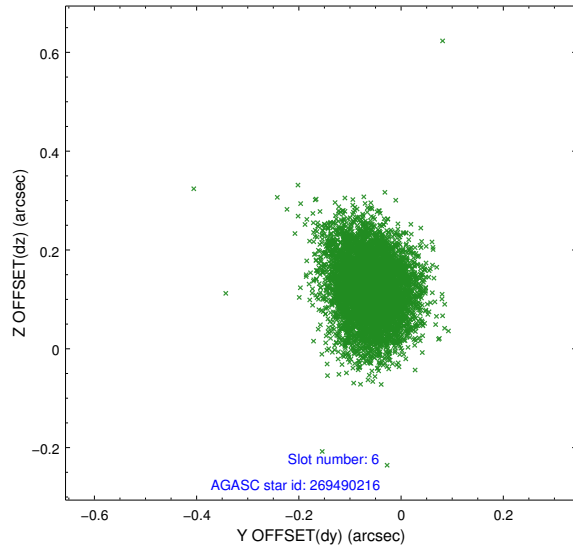
## 2.4.2 Slot 4



### 2.4.3 Slot 5

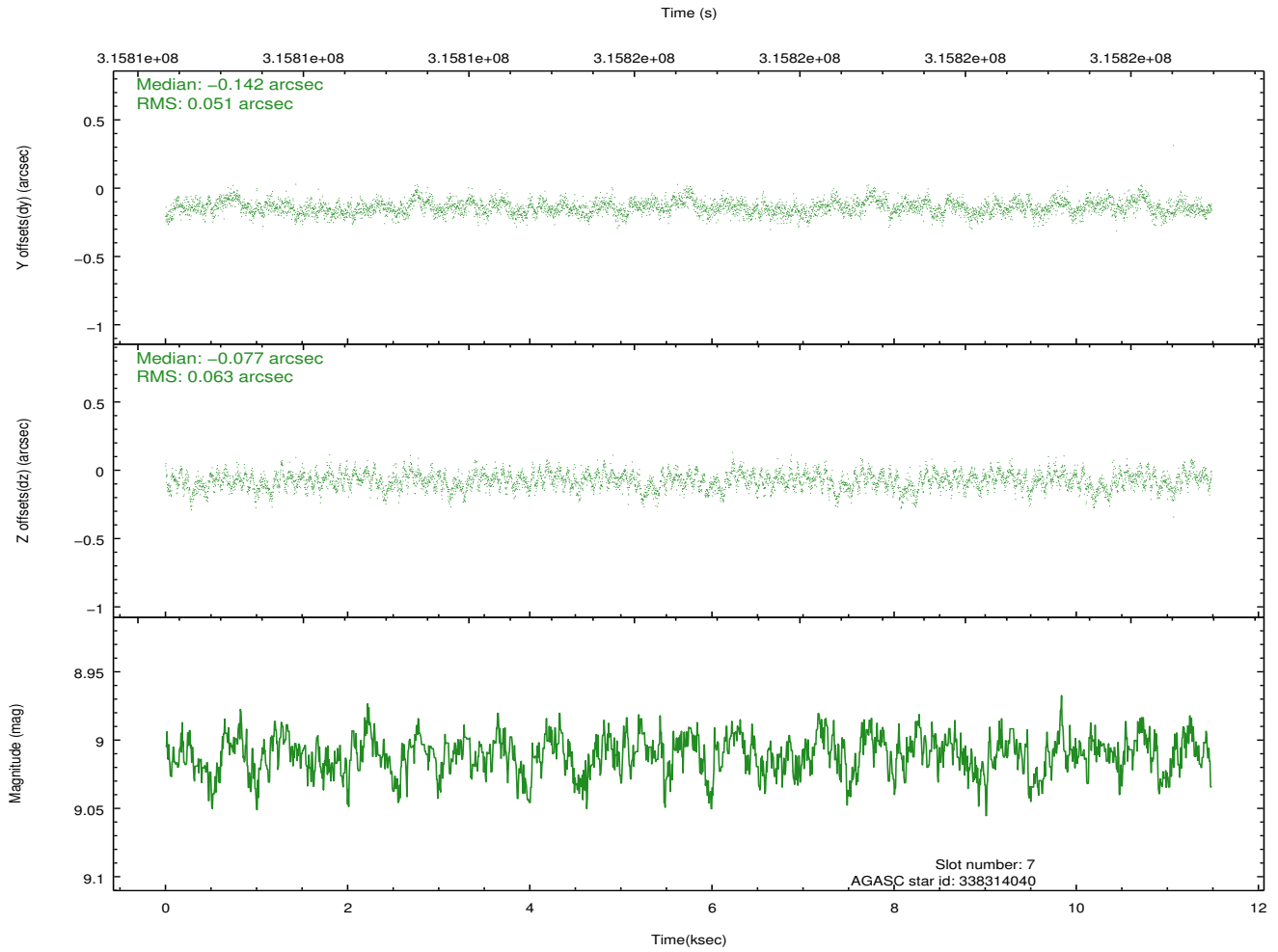
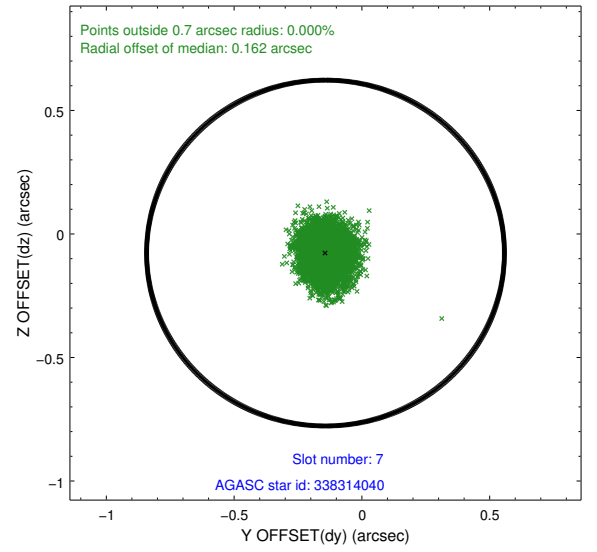
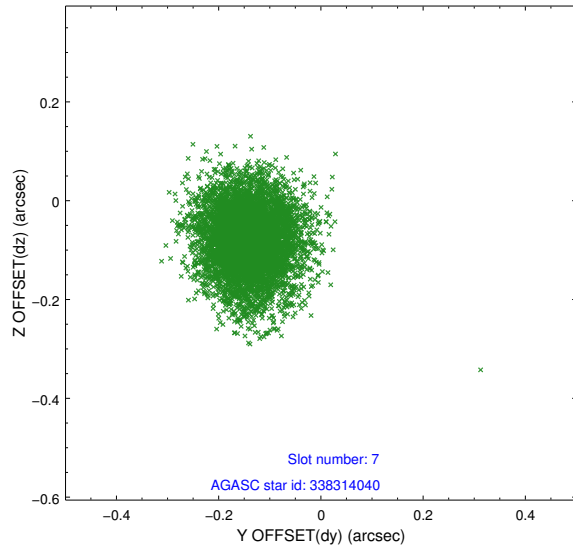


## 2.4.4 Slot 6



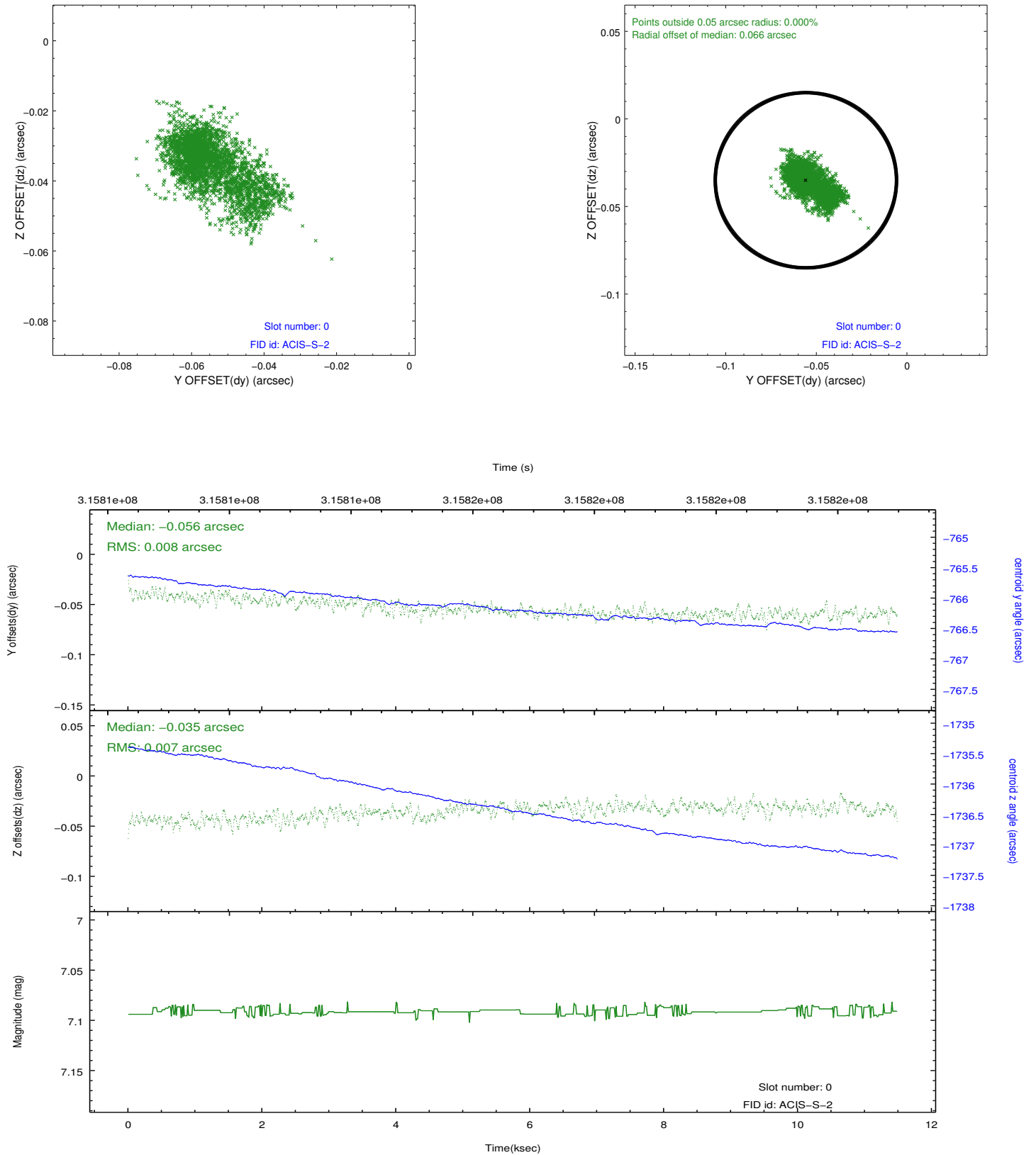


## 2.4.5 Slot 7

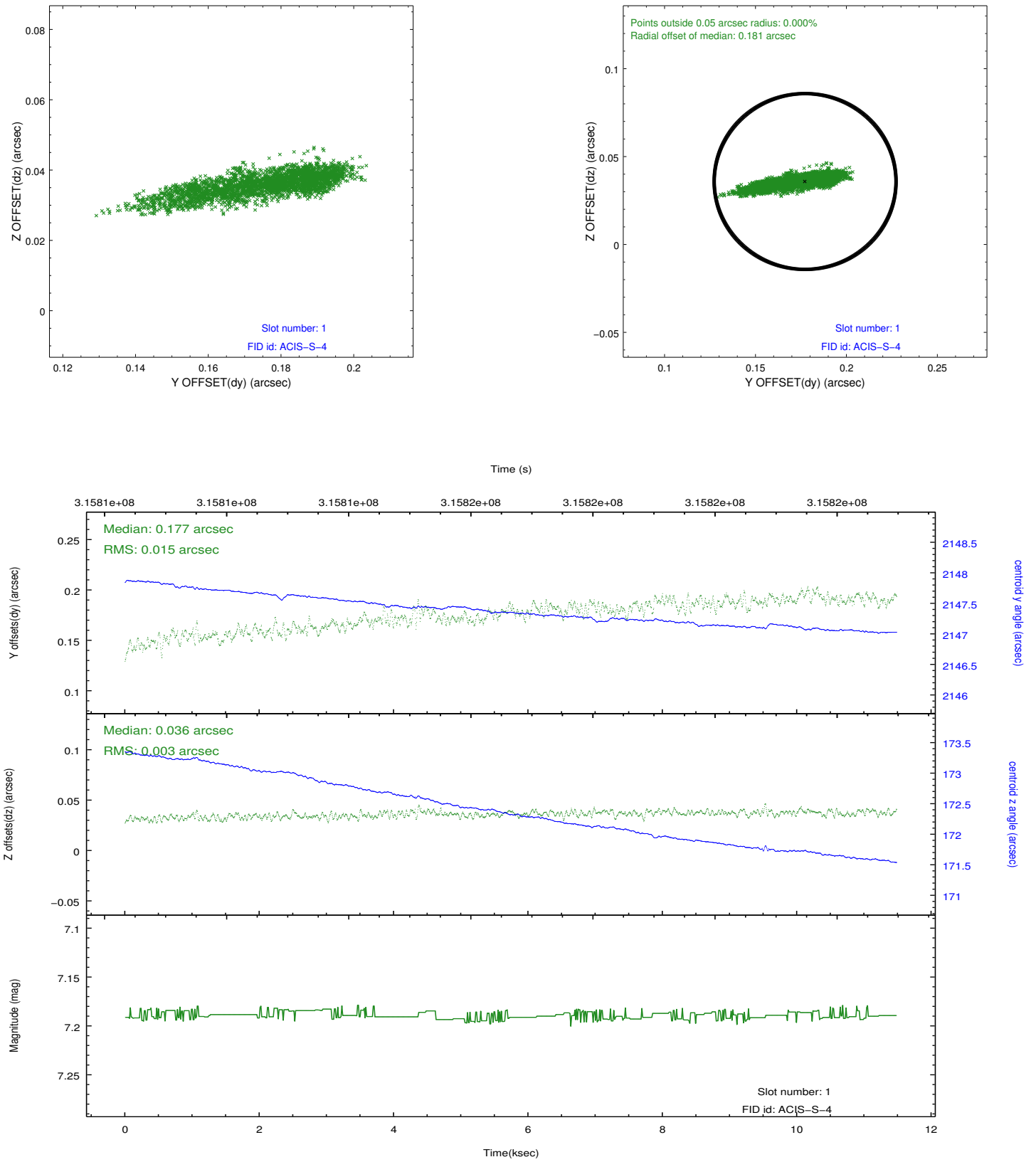


## 2.5 FID Slots

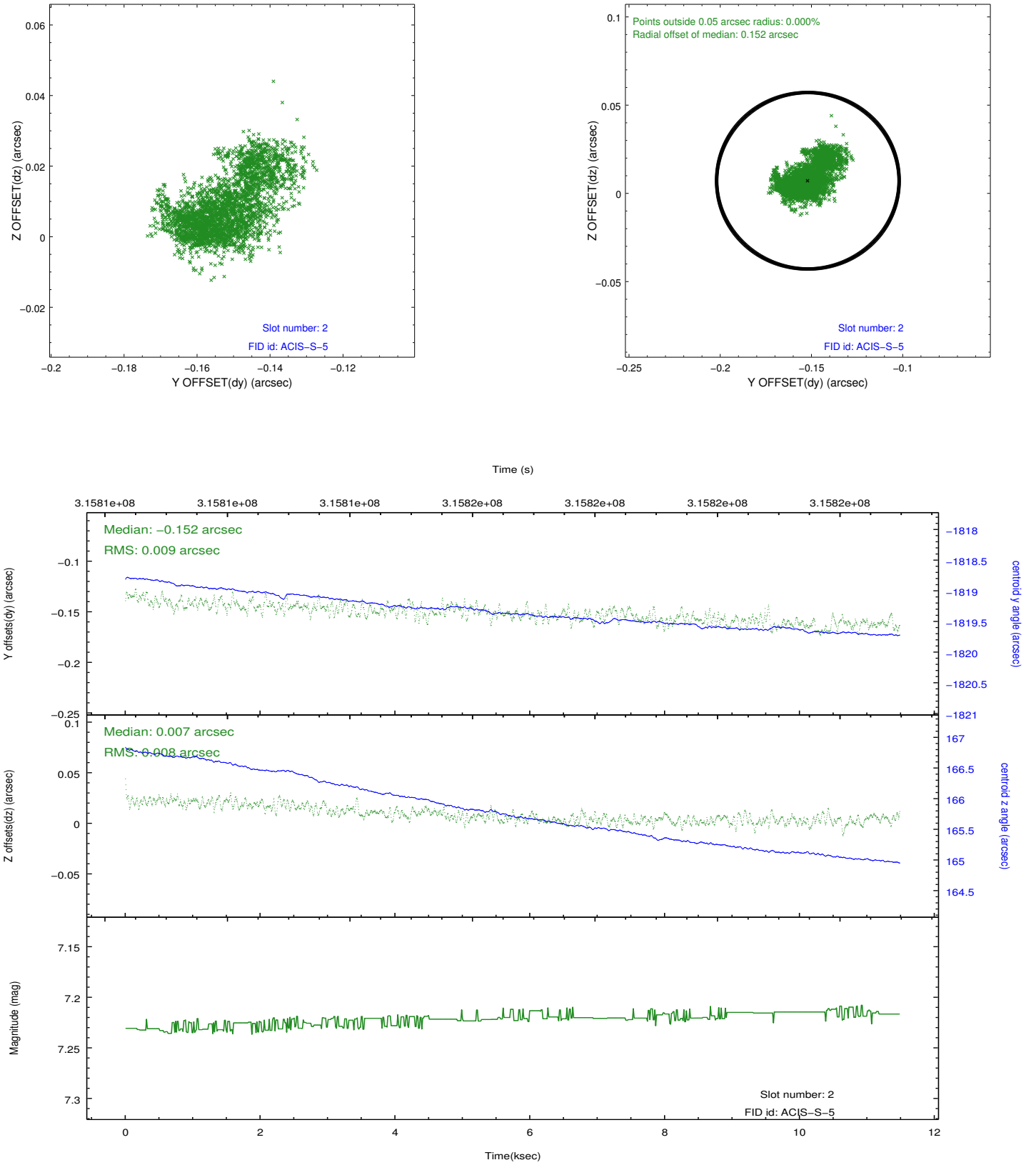
### 2.5.1 Slot 0



## 2.5.2 Slot 1



### 2.5.3 Slot 2



## A Summary

### A.1 Status

V&V Scientist	Jen Lauer
V&V Date (YYYY-MM-DD)	2012.05.09
V&V Edition	1
V&V Disposition and Status	OK
V&V Charge Time	11.4824

### A.2 Comments