

V&V Reference Report

L2 ASCDS Version : 8.4.4

Observation 9567 - L2 Version 2
Chandra X-Ray Center

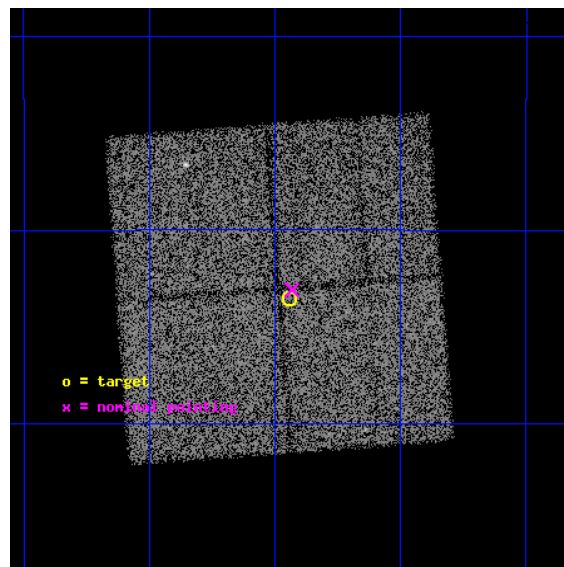
L2 Processing Date : May 14 2012

Contents

1	Front	2
2	OBI	3
2.1	OBI	3
2.1.1	Images	3
2.1.2	Bias	3
2.1.3	Parameters	4
2.1.4	Events	4
2.2	Compared Parameters	5
2.3	Aspect	6
2.4	Star Slots	9
2.4.1	Slot 3	9
2.4.2	Slot 4	10
2.4.3	Slot 5	11
2.4.4	Slot 6	12
2.4.5	Slot 7	13
2.5	FID Slots	14
2.5.1	Slot 0	14
2.5.2	Slot 1	15
2.5.3	Slot 2	16
A	Summary	17
A.1	Status	17
A.2	Comments	17

1 Front

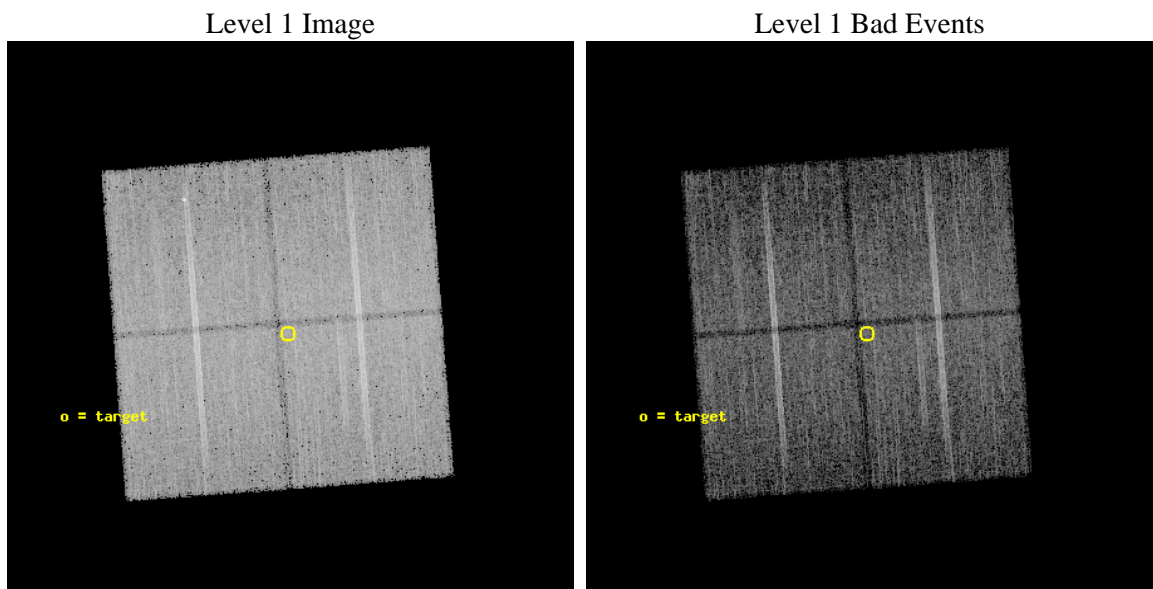
seq_num	600708	Sequence number
obs_id	9567	Observation id
title	Galactic Bulge Latitude Survey -3	Proposal title
observer	Professor Johnathan Grindlay	Principal investigator
object	GBW36	Source name
dtcycle	0	
cycle	P	events from which exps? Prim/Second/Both
ra_targ	265.860417	Observer's specified target RA [deg]
dec_targ	-28.892778	Observer's specified target Dec [deg]
ra_nom	265.85830208566	Nominal RA [deg]
dec_nom	-28.884895821962	Nominal Dec [deg]
roll_nom	85.707671637252	Nominal Roll [deg]
revision	2	Processing version of data
ontime	15388.400118351	Sum of GTIs [s]
liveltime	15187.339342029	Livetime [s]
ontime0	15385.259127975	Sum of GTIs [s]
ontime1	15385.259108067	Sum of GTIs [s]
ontime2	15385.25911814	Sum of GTIs [s]
ontime3	15388.400118351	Sum of GTIs [s]
l2events	71239	Number of level 2 events



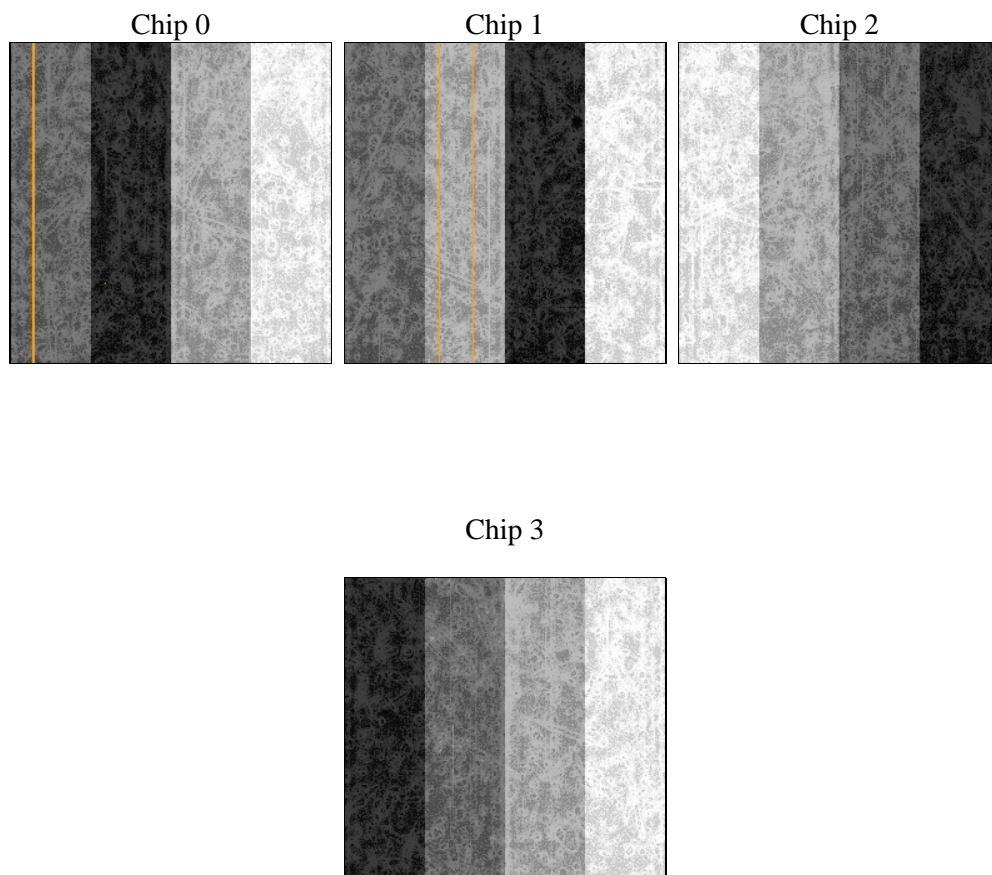
2 OBI

2.1 OBI

2.1.1 Images



2.1.2 Bias



2.1.3 Parameters

obi_num	1	Obi number	sched_exp_time	15599.000000	[s] Scheduled observation exposure time
ascdsver	8.4.4	Processing system revision	ontime	15388.400118351	Sum of GTIs [s]
caldsver	4.4.9	 	ontime0	15385.259127975	Sum of GTIs [s]
date	2012-05-14T21:02:52	Date and time of file creation	ontime1	15385.259108067	Sum of GTIs [s]
revision	2	Processing version of data	ontime2	15385.25911814	Sum of GTIs [s]
			ontime3	15388.400118351	Sum of GTIs [s]
			l1events	573455	Number of level 1 events

2.1.4 Events

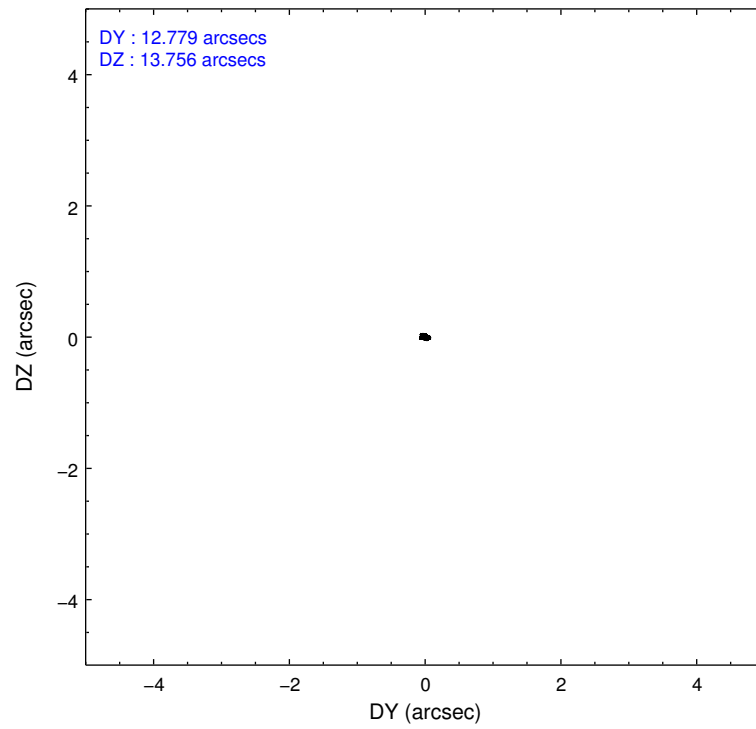
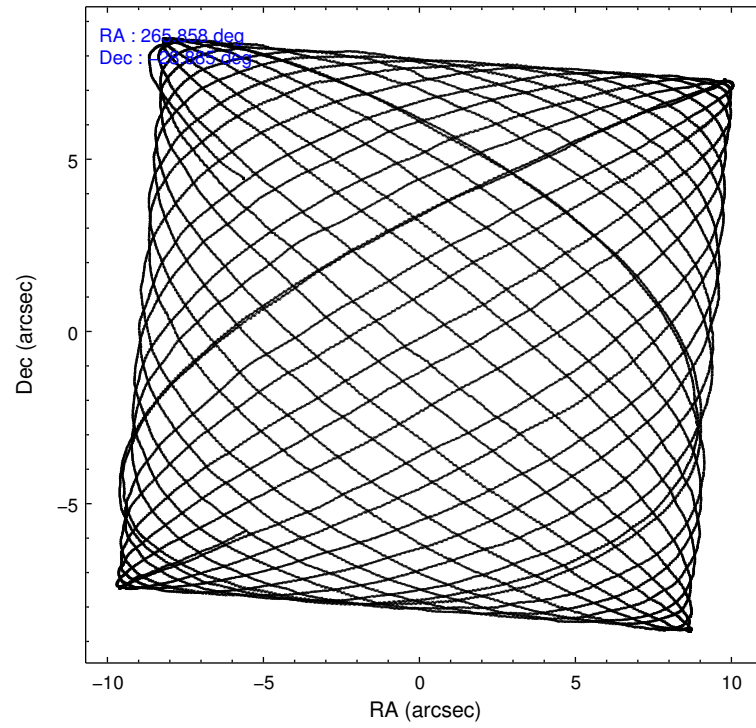
	ccd 0	ccd 1	ccd 2	ccd 3
level 1 events	140156	139721	147491	146087
rejected events	119191	117860	128226	126214
rejected %	85%	84%	86%	86%

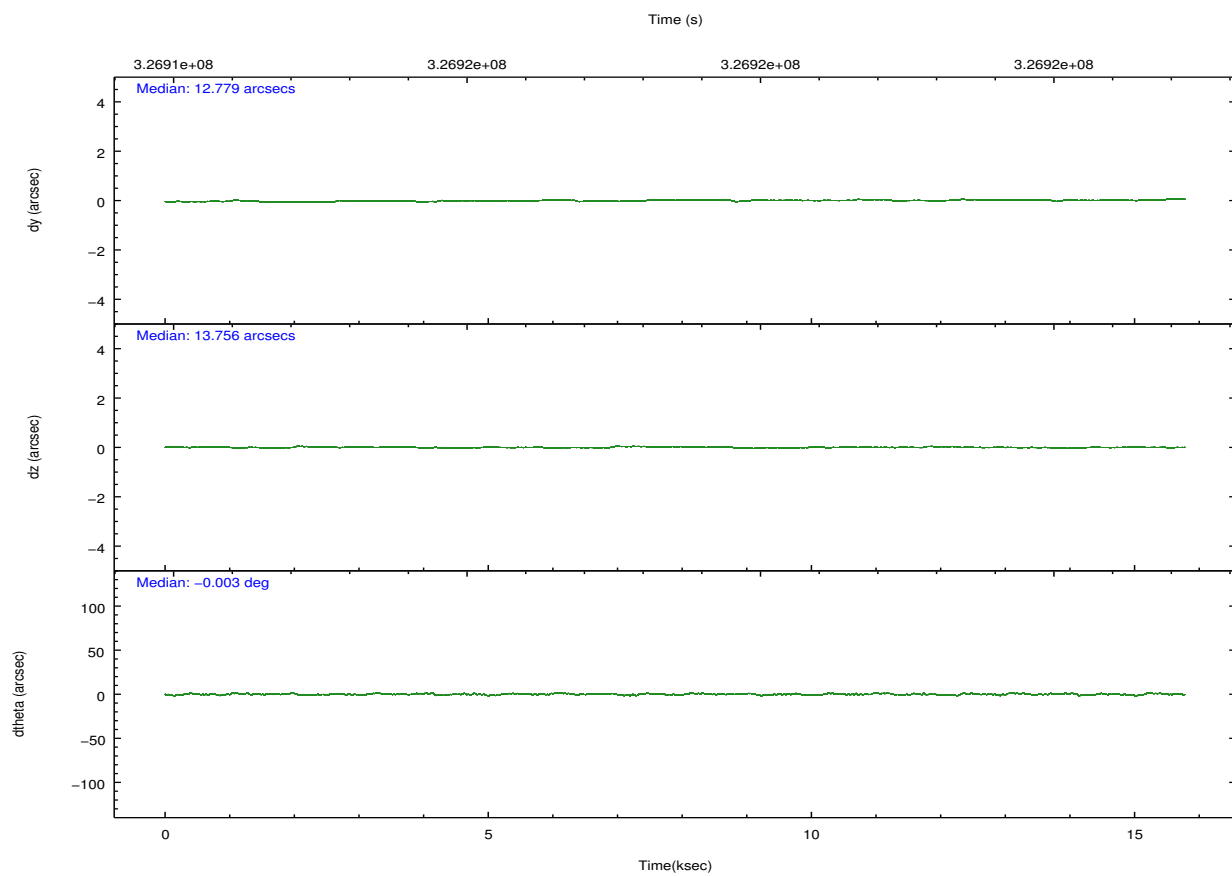
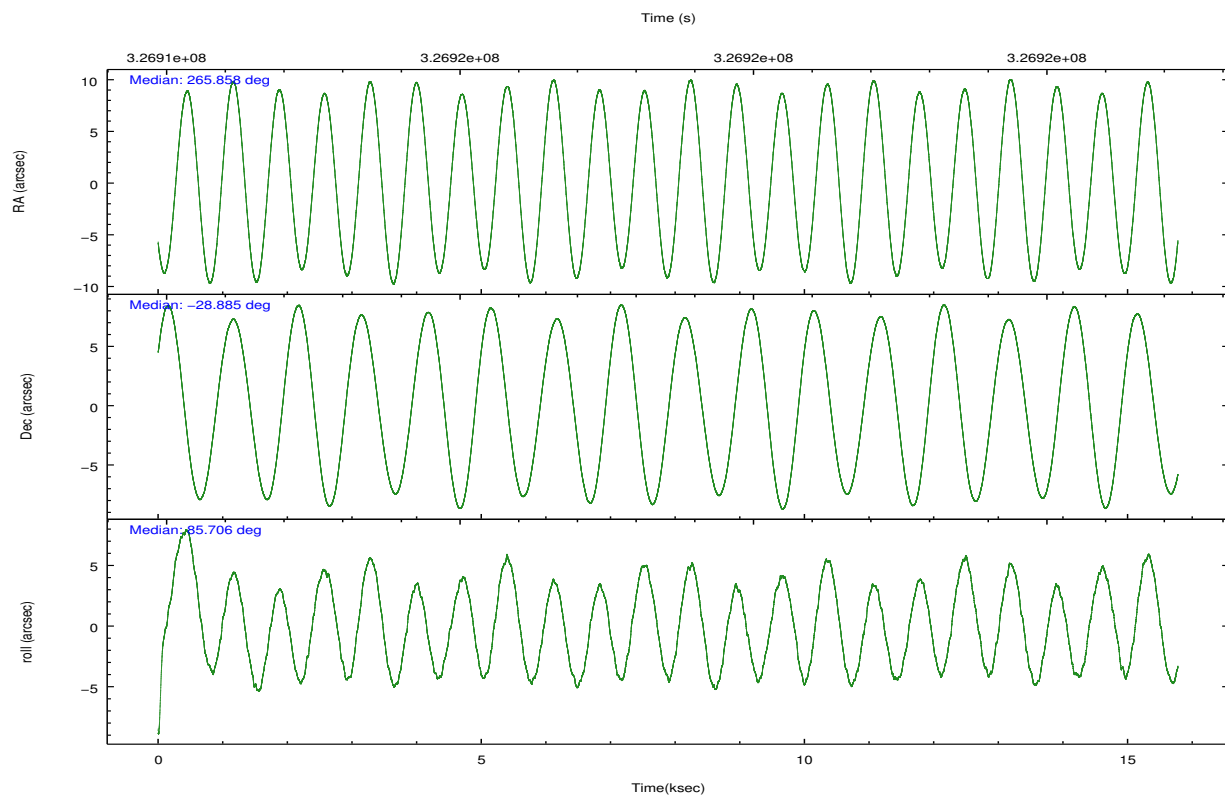
	ccd 0	ccd 1	ccd 2	ccd 3
grade 0 events	9787	9246	8836	9175
	6%	6%	5%	6%
grade 1 events	107	83	98	102
	0%	0%	0%	0%
grade 2 events	4471	4808	3992	3783
	3%	3%	2%	2%
grade 3 events	1737	1981	1691	1799
	1%	1%	1%	1%
grade 4 events	1722	1943	1715	1757
	1%	1%	1%	1%
grade 5 events	6294	6863	5959	6983
	4%	4%	4%	4%
grade 6 events	3258	3894	3047	3367
	2%	2%	2%	2%
grade 7 events	112780	110903	122153	119121
	80%	79%	82%	81%

2.2 Compared Parameters

Parameter	Planned	Actual	Parameter	Planned	Actual
Instrument	ACIS	ACIS	Obspar format version number	7	7
Detector	ACIS-0123	ACIS-0123	Obspar file type	PREDICTED	ACTUAL
Grating	NONE	NONE	Obspar update status	NONE	UPDATED
Data mode	VFAINT	VFAINT	Number of optional ACIS chips dropped	0	0
Observation mode	POINTING	POINTING	On-chip summing requested	N	N
[deg] Pointing RA	265.872080	265.8583020856589	Subarray requested	NONE	NONE
[deg] Pointing Dec	-28.909621	-28.8848958219617	Alternating exposures requested	N	N
[deg] Pointing Roll	85.505638	85.70767163725162	[s] Primary exposure time	0.000000	3.1
[mm] SIM focus pos	-0.782348	-0.7809083437167272			
[mm] SIM defocus	0	0.001439871863259334			
[mm] SIM translation stage pos	-233.592463	-233.5899487761303			
[mm] SIM translation stage offset	0	-0.002504226799430853			
[s] Observation start time (MET)	326910837.184000	326910461.08077			
Observation start date	2008-05-11T16:32:52	2008-05-11T16:27:41			
[s] Observation end time (MET)	326926436.184000	326926811.36906			
Observation end date	2008-05-11T20:52:51	2008-05-11T21:00:11			
Read mode	TIMED	TIMED			

2.3 Aspect



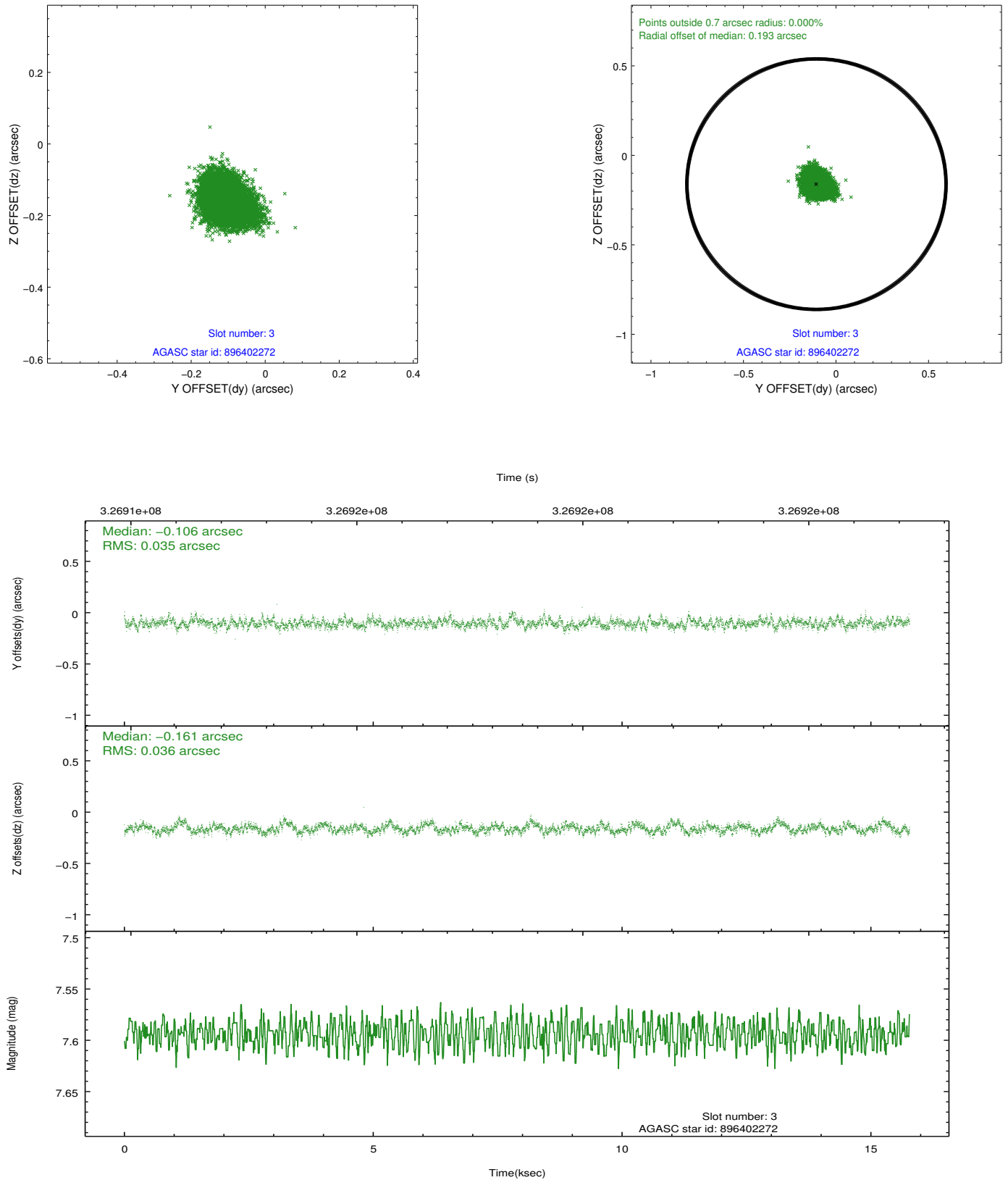


Slot Statistics

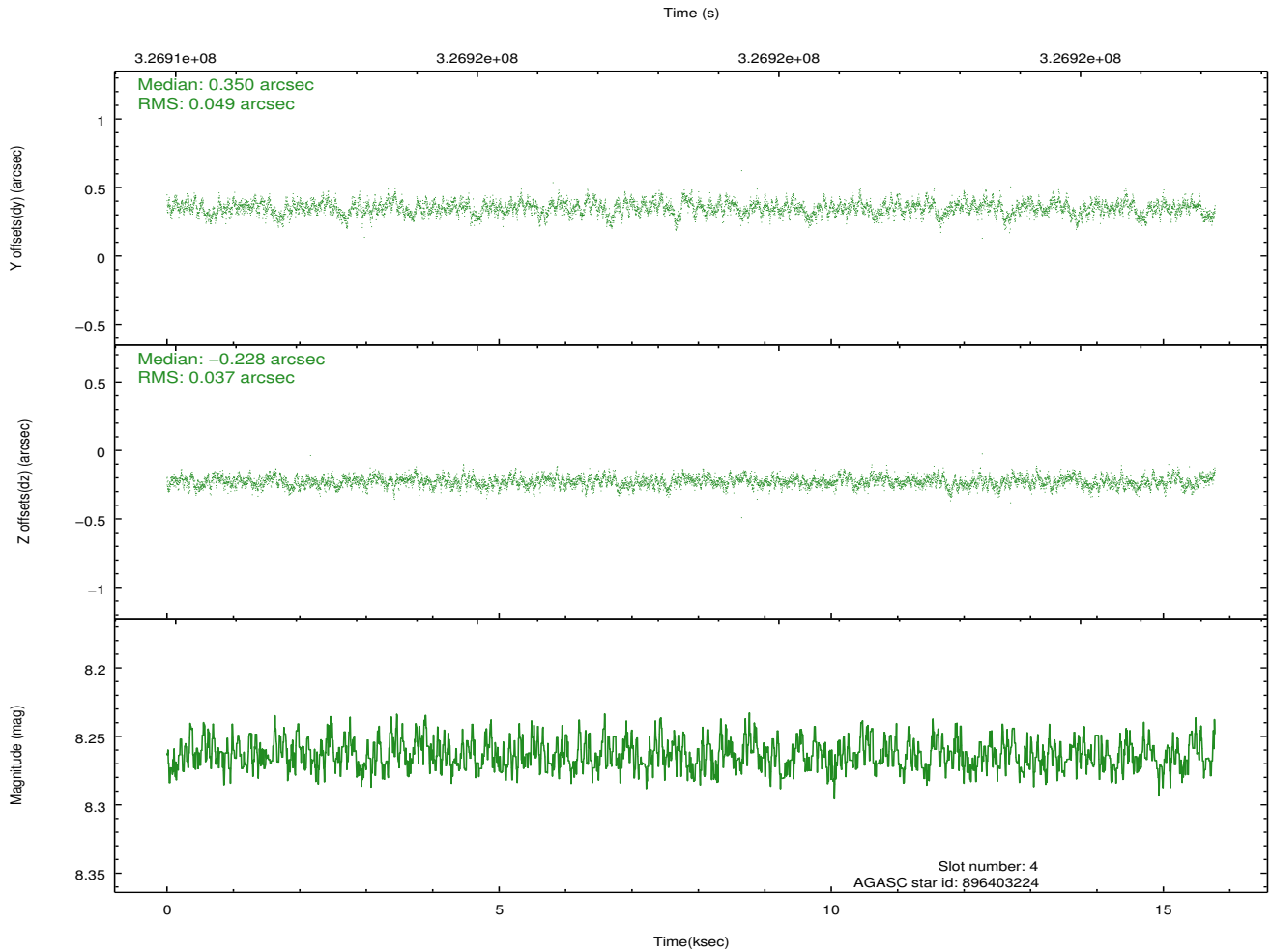
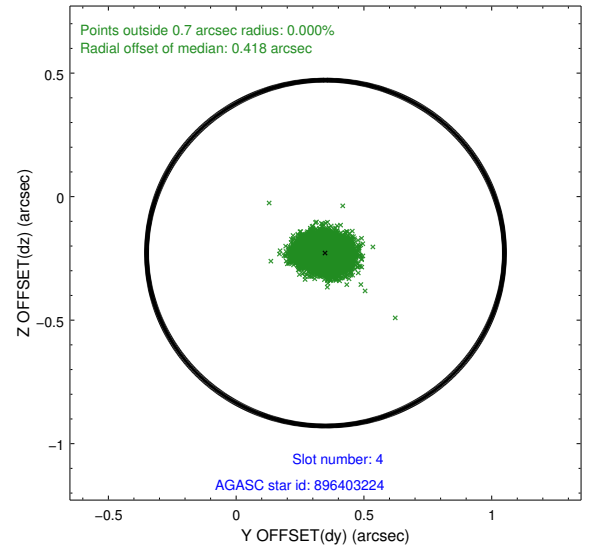
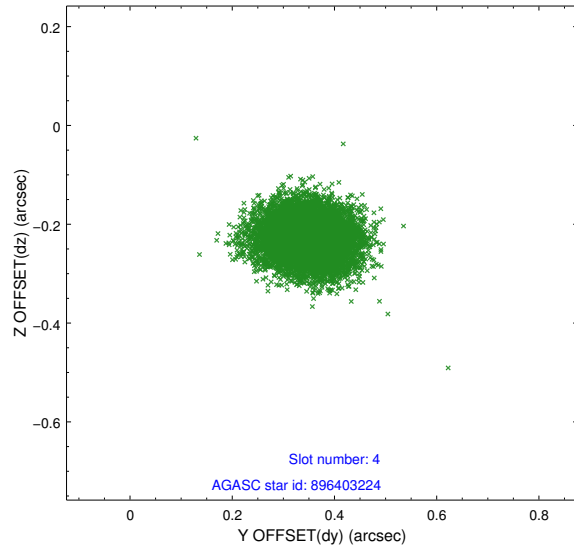
slot	status	id	mag	n_pts	med_dy	med_dz	dr1	dr2	ra	dec	mean_y	mean_z
0	FID	ACIS-I-1	7.06	3849	0.004	0.043	0.008	0.013	0.000000	0.000000	926.76	-837.22
1	FID	ACIS-I-5	7.04	3849	-0.158	0.032	0.008	0.014	0.000000	0.000000	-1821.38	1060.09
2	FID	ACIS-I-6	7.05	3849	0.062	-0.005	0.008	0.014	0.000000	0.000000	392.03	1704.90
3	GUIDE	896402272	7.59	7697	-0.106	-0.161	0.053	0.087	265.637294	-28.313189	2081.57	910.00
4	GUIDE	896403224	8.26	7696	0.350	-0.228	0.065	0.105	265.612825	-29.438915	-1963.60	660.73
5	GUIDE	896534664	8.19	7694	-0.251	0.114	0.074	0.122	266.405570	-28.407461	1930.57	-1542.52
6	GUIDE	896538696	6.90	7695	-0.174	0.192	0.045	0.073	266.298470	-28.325572	2199.90	-1182.46
7	GUIDE	896540808	7.49	7627	0.189	0.084	0.049	0.080	265.985401	-29.308604	-1403.60	-467.26

2.4 Star Slots

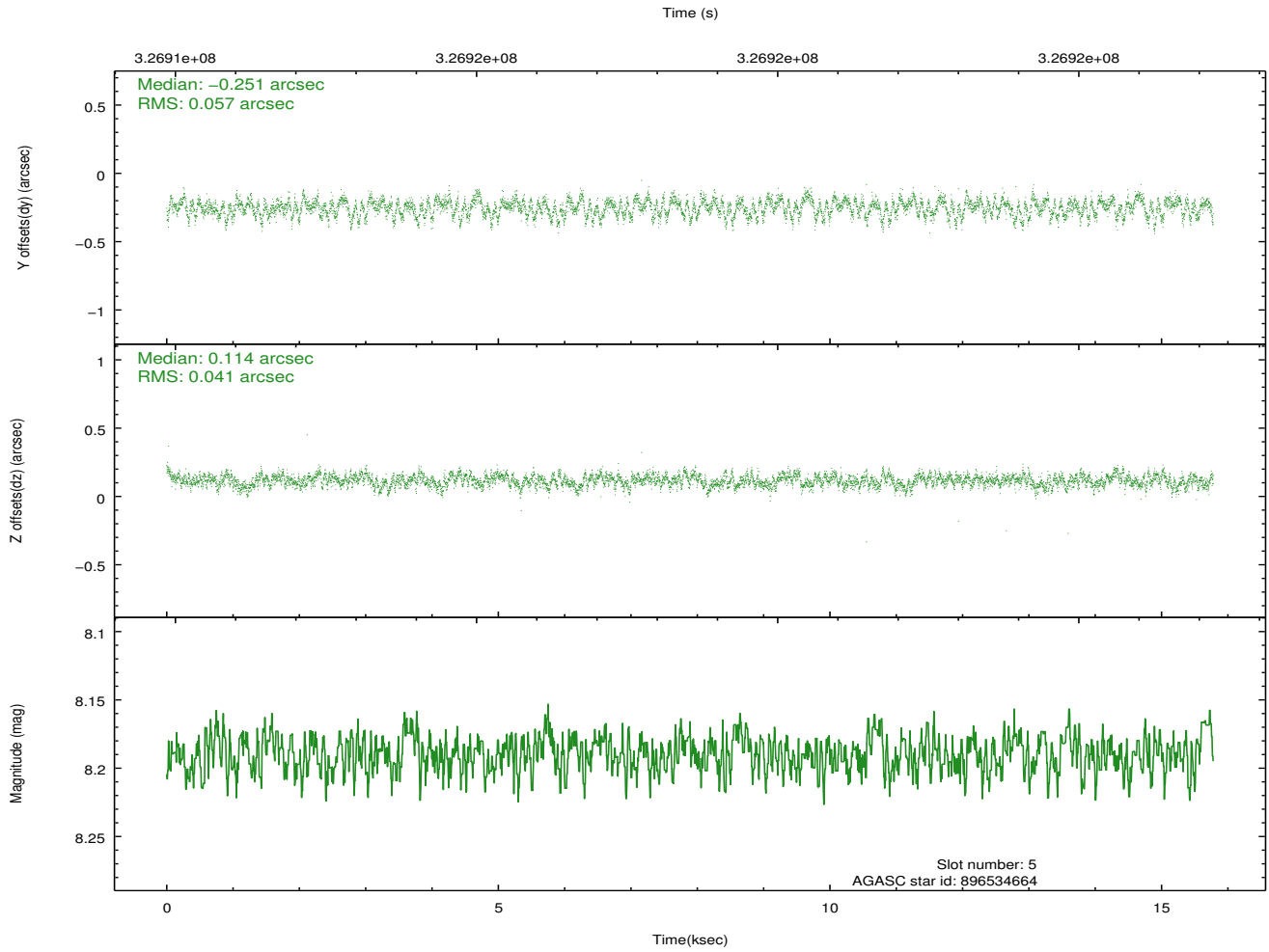
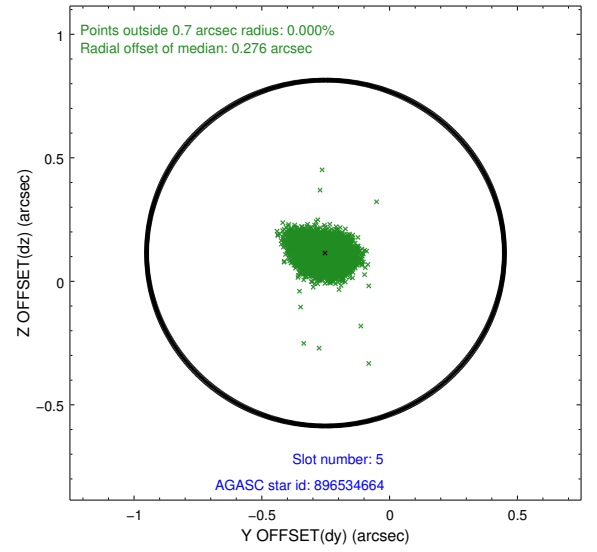
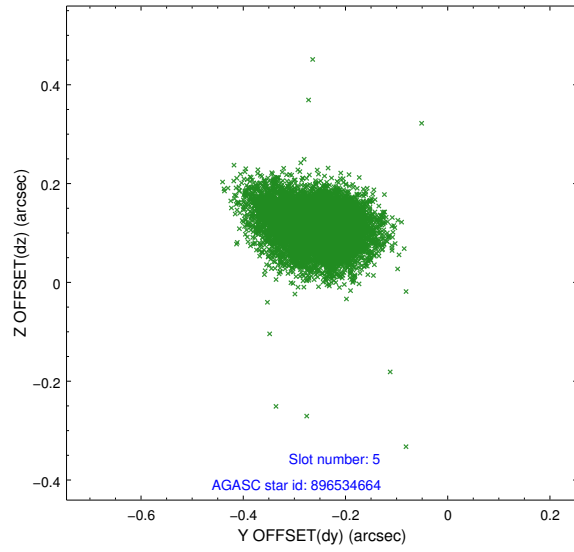
2.4.1 Slot 3



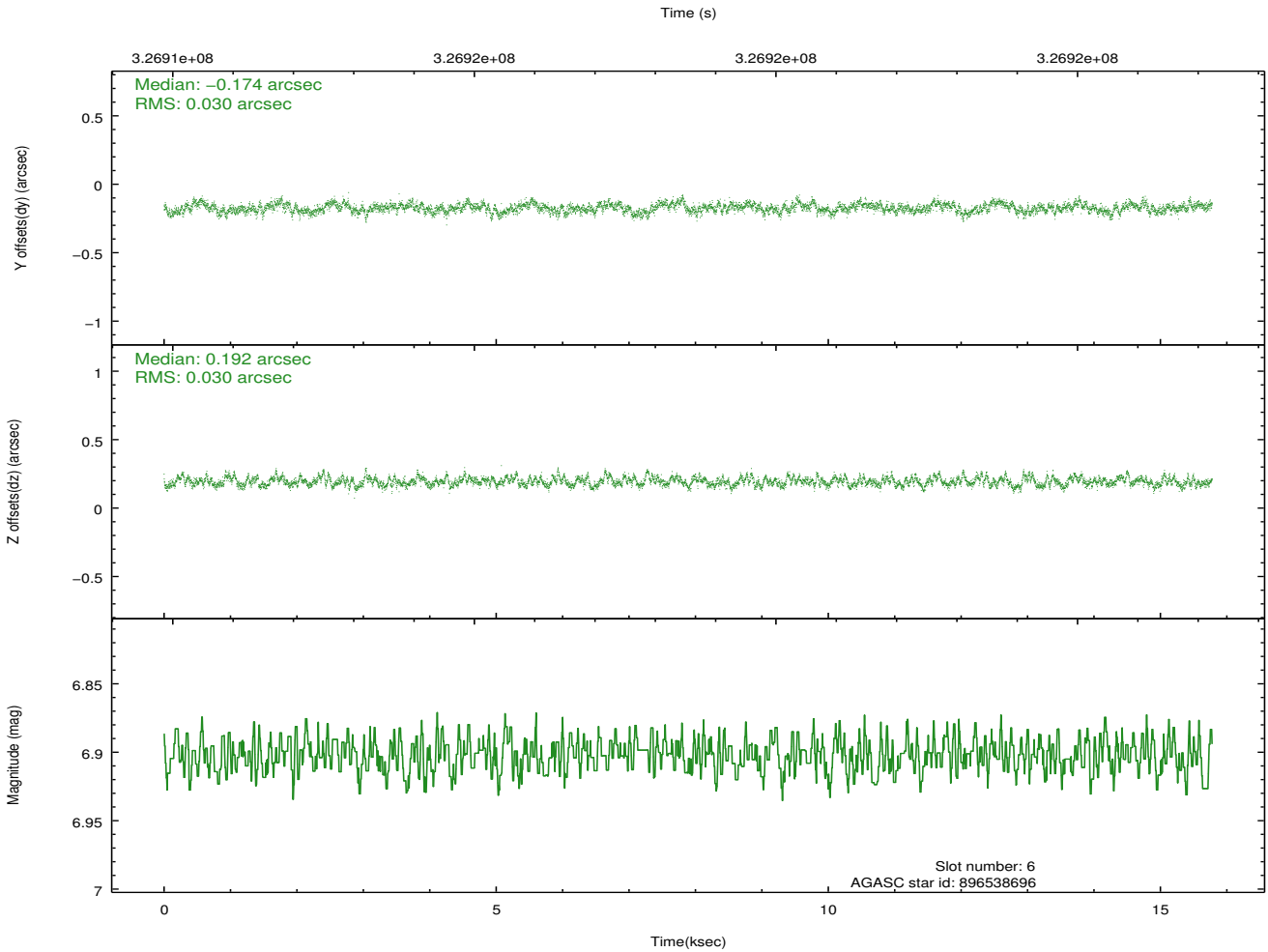
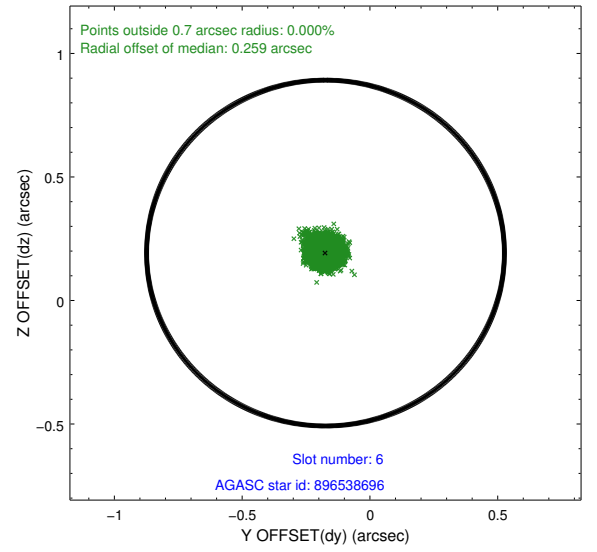
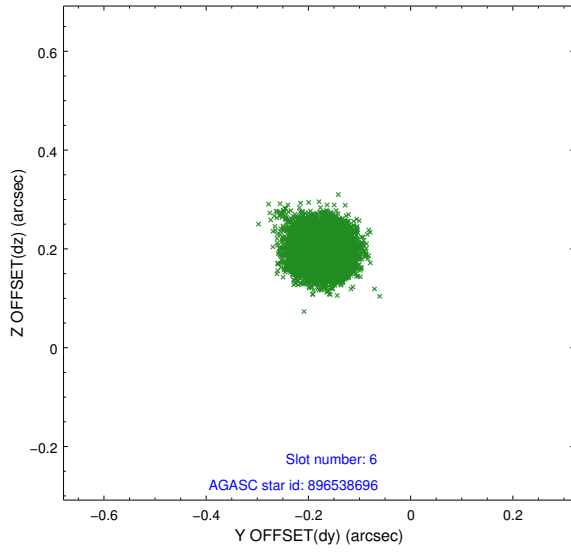
2.4.2 Slot 4



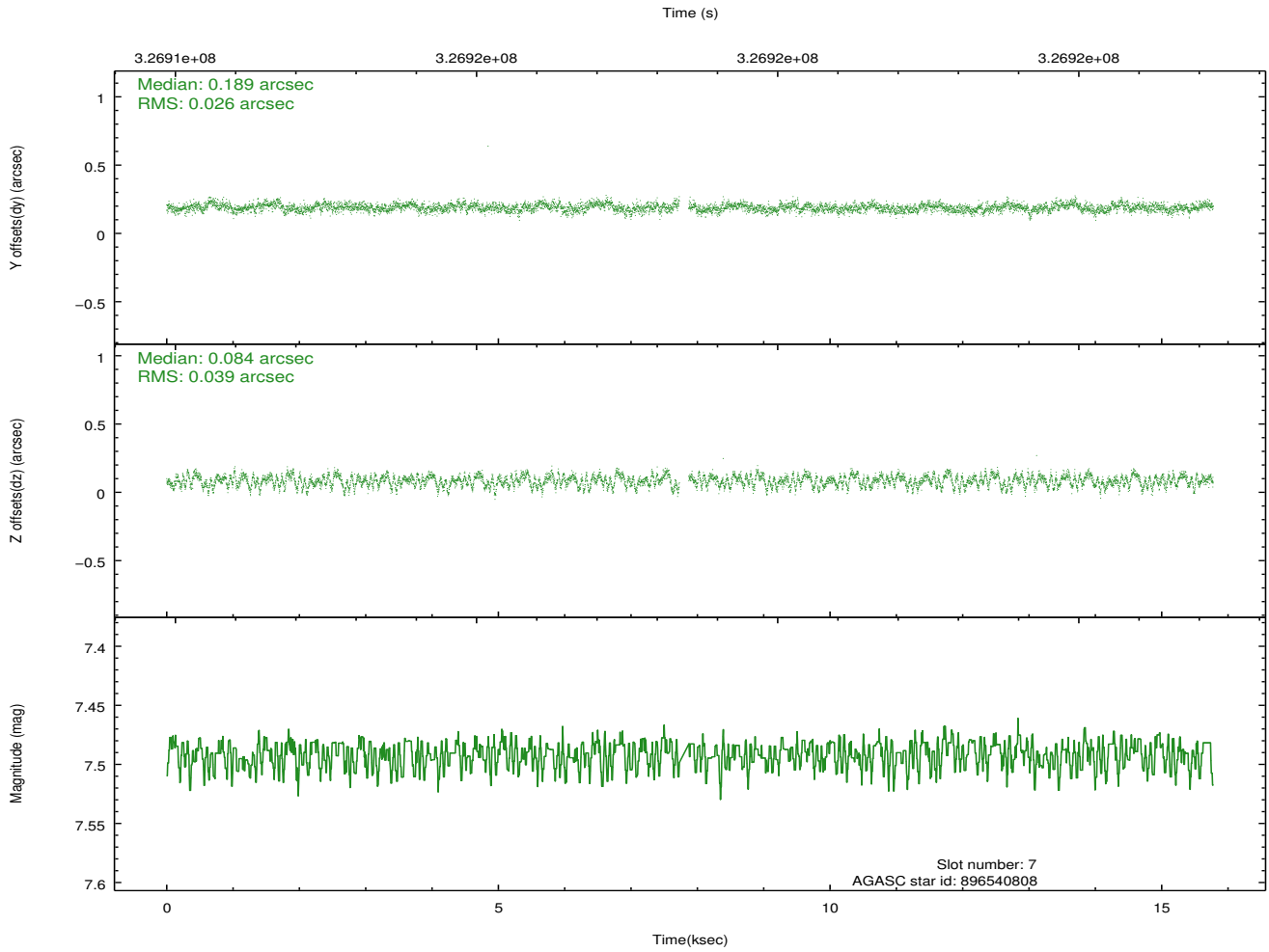
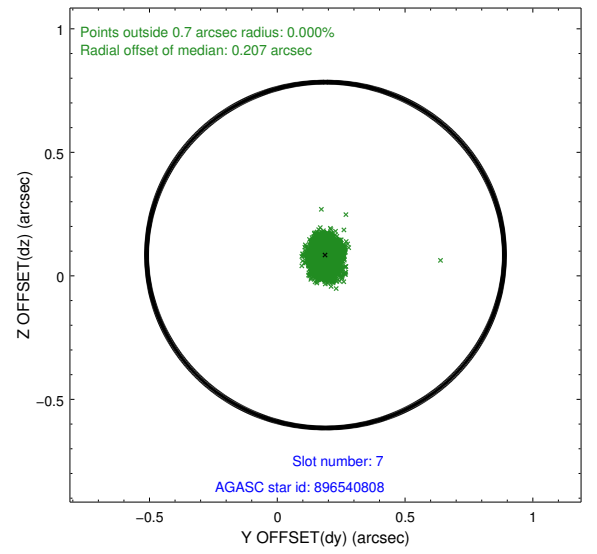
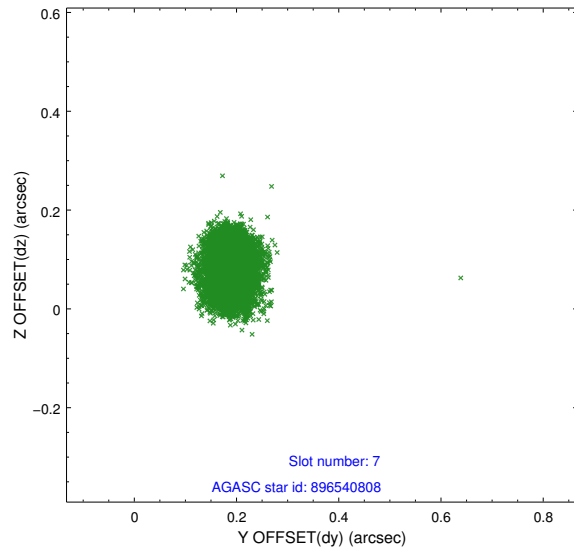
2.4.3 Slot 5



2.4.4 Slot 6

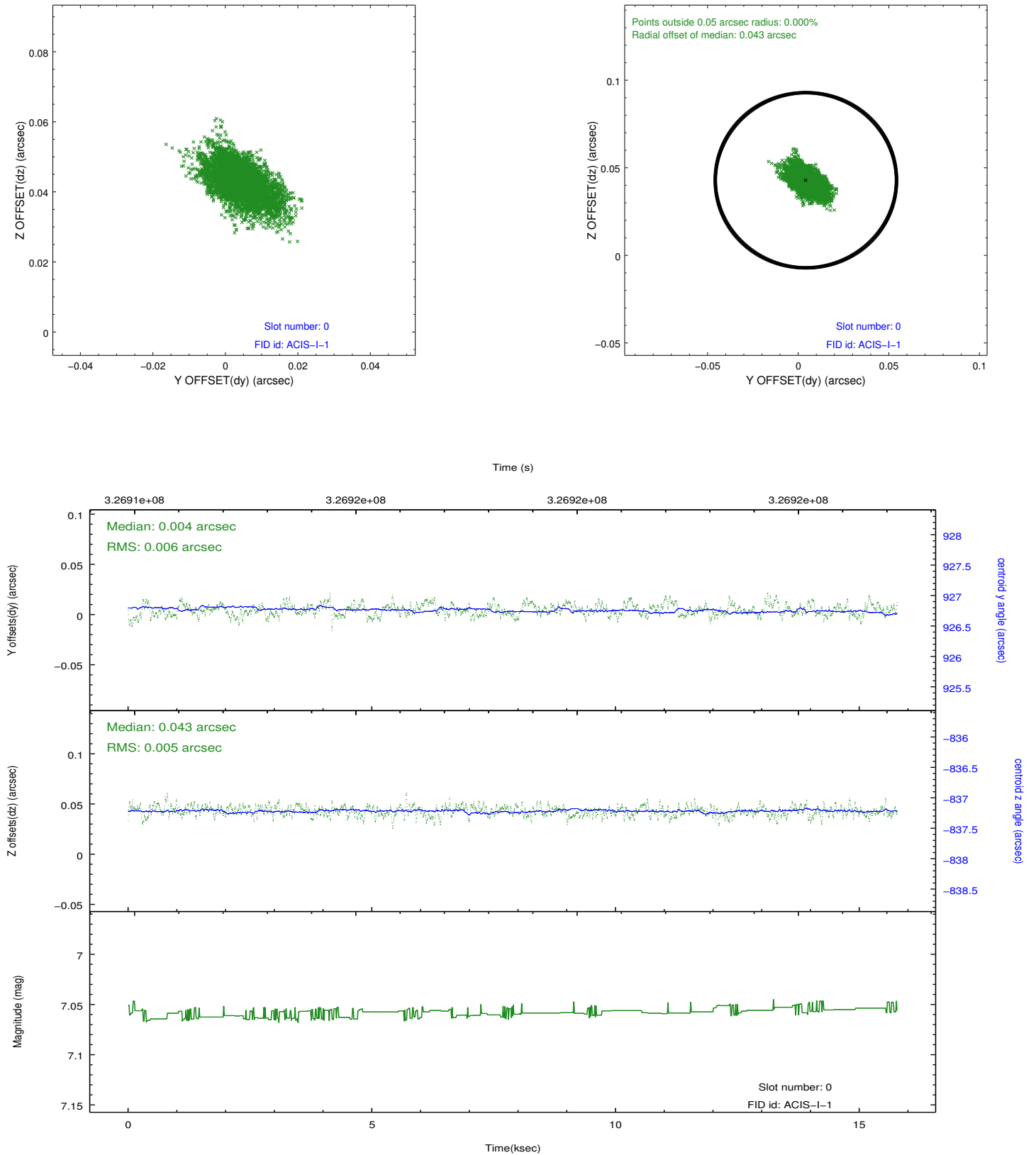


2.4.5 Slot 7

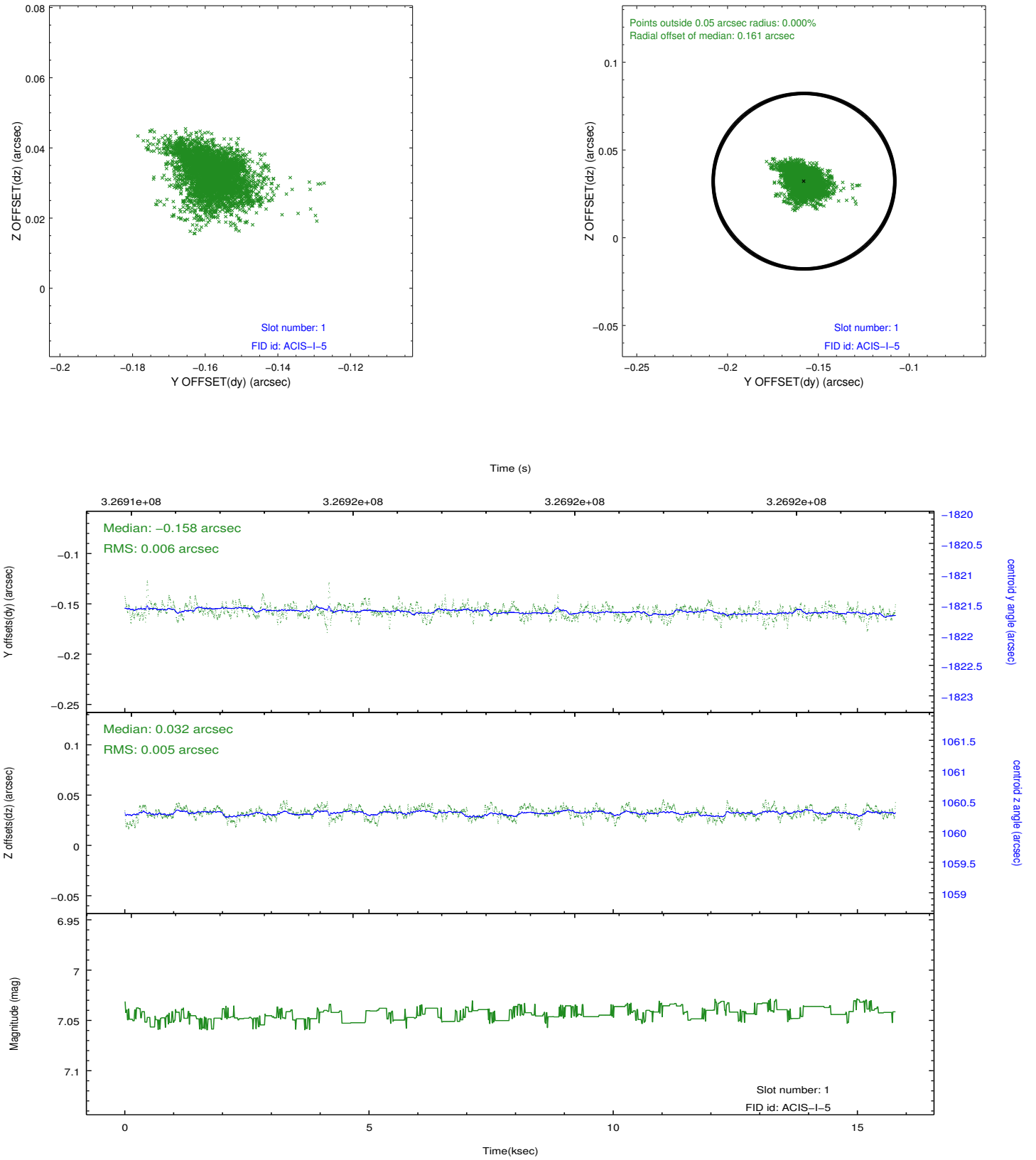


2.5 FID Slots

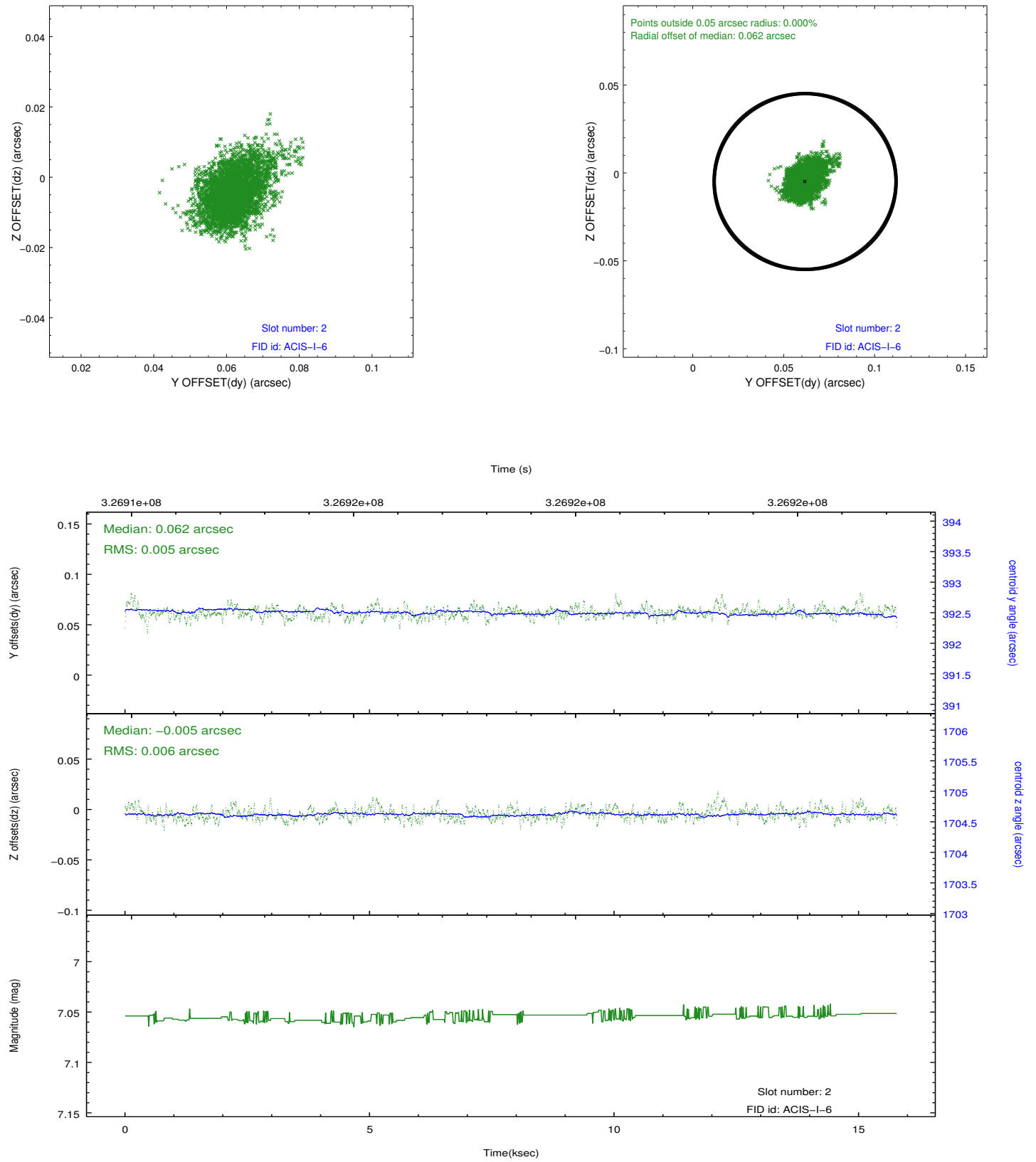
2.5.1 Slot 0



2.5.2 Slot 1



2.5.3 Slot 2



A Summary

A.1 Status

V&V Scientist	Jen Lauer
V&V Date (YYYY-MM-DD)	2012.05.16
V&V Edition	1
V&V Disposition and Status	OK
V&V Charge Time	15.3884001

A.2 Comments

Joint Proposal: NOAO. Roll preference met.