

# V&V Reference Report

## L2 ASCDS Version : 8.4.4

Observation 9561 - L2 Version 2  
Chandra X-Ray Center

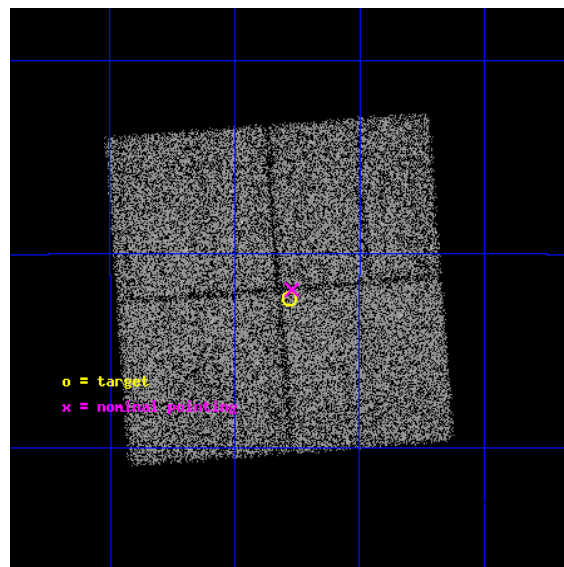
L2 Processing Date : May 14 2012

## Contents

<b>1</b>	<b>Front</b>	<b>2</b>
<b>2</b>	<b>OBI</b>	<b>3</b>
2.1	OBI . . . . .	3
2.1.1	Images . . . . .	3
2.1.2	Bias . . . . .	3
2.1.3	Parameters . . . . .	4
2.1.4	Events . . . . .	4
2.2	Compared Parameters . . . . .	5
2.3	Aspect . . . . .	6
2.4	Star Slots . . . . .	9
2.4.1	Slot 3 . . . . .	9
2.4.2	Slot 4 . . . . .	10
2.4.3	Slot 5 . . . . .	11
2.4.4	Slot 6 . . . . .	12
2.4.5	Slot 7 . . . . .	13
2.5	FID Slots . . . . .	14
2.5.1	Slot 0 . . . . .	14
2.5.2	Slot 1 . . . . .	15
2.5.3	Slot 2 . . . . .	16
<b>A</b>	<b>Summary</b>	<b>17</b>
A.1	Status . . . . .	17
A.2	Comments . . . . .	17

# 1 Front

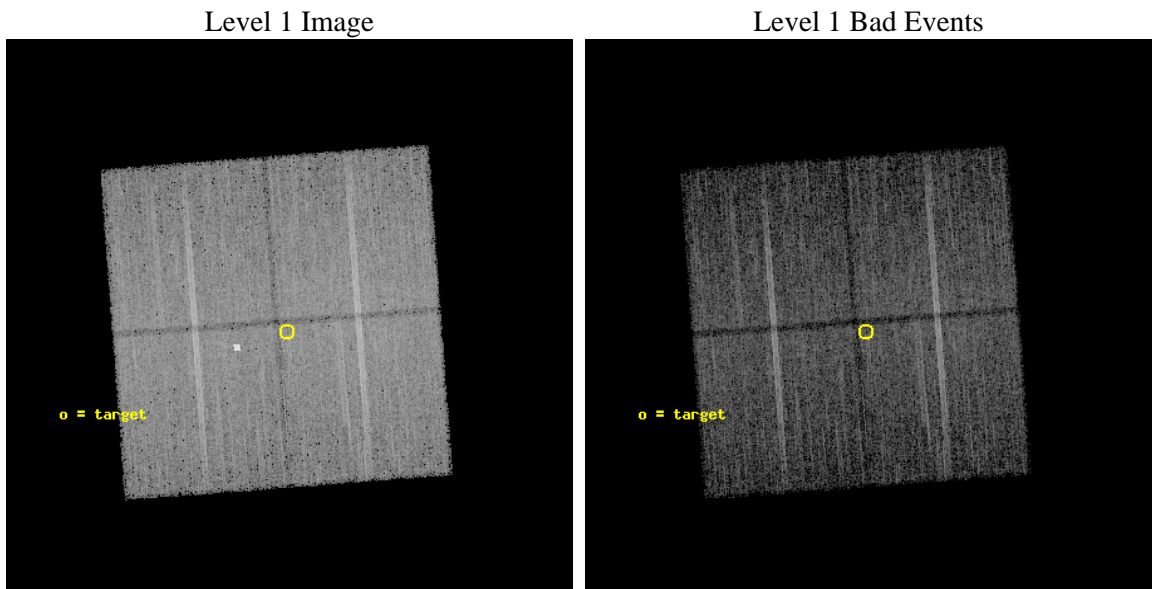
seq_num	600702	Sequence number
obs_id	9561	Observation id
title	Galactic Bulge Latitude Survey -3	Proposal title
observer	Professor Johnathan Grindlay	Principal investigator
object	GBW15	Source name
dtcycle	0	&#160
cycle	P	events from which exps? Prim/Second/Both
ra_targ	267.07	Observer's specified target RA [deg]
dec_targ	-29.53875	Observer's specified target Dec [deg]
ra_nom	267.06790834192	Nominal RA [deg]
dec_nom	-29.530867584136	Nominal Dec [deg]
roll_nom	85.707658667908	Nominal Roll [deg]
revision	2	Processing version of data
ontime	14538.959121525	Sum of GTIs [s]
liveltime	14348.996917177	Livetime [s]
ontime0	14538.959131539	Sum of GTIs [s]
ontime1	14538.959121466	Sum of GTIs [s]
ontime2	14532.677141011	Sum of GTIs [s]
ontime3	14538.959121525	Sum of GTIs [s]
l2events	68304	Number of level 2 events



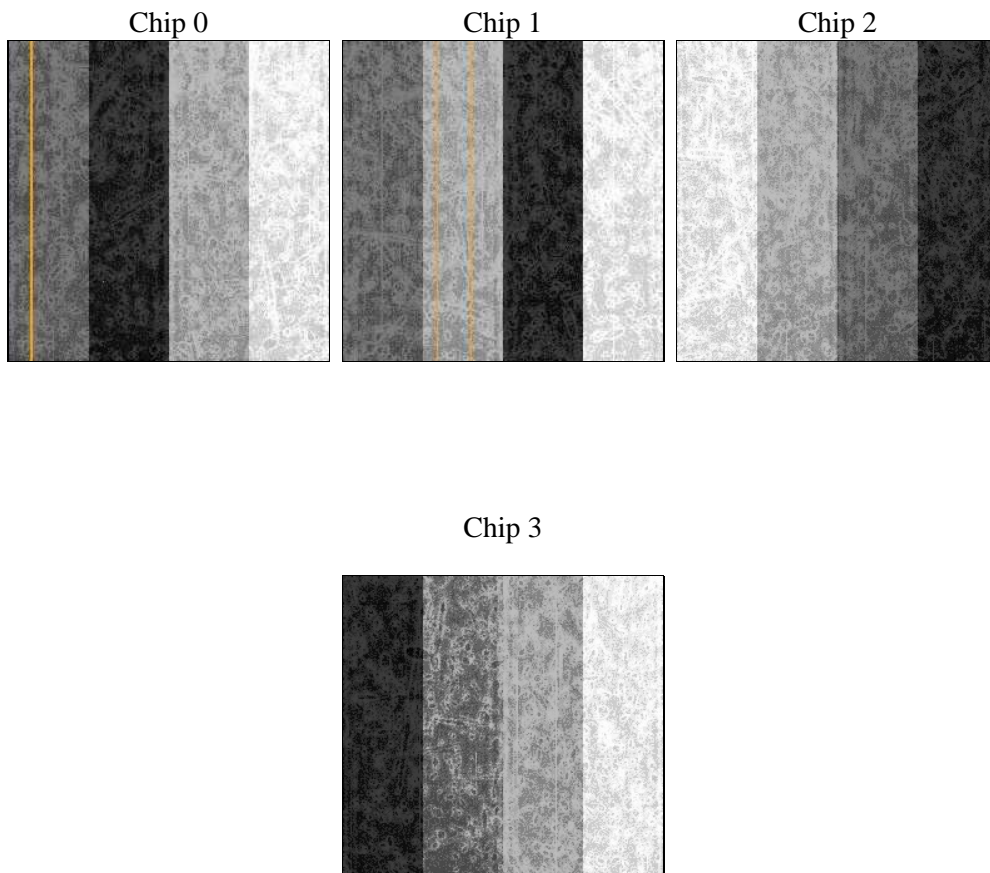
## 2 OBI

### 2.1 OBI

#### 2.1.1 Images



#### 2.1.2 Bias



### 2.1.3 Parameters

obi_num	0	Obi number	sched_exp_time	14755.000000	[s] Scheduled observation exposure time
ascdsver	8.4.4	Processing system revision	ontime	14538.959121525	Sum of GTIs [s]
caldsver	4.4.9	&#160	ontime0	14538.959131539	Sum of GTIs [s]
date	2012-05-14T01:34:23	Date and time of file creation	ontime1	14538.959121466	Sum of GTIs [s]
revision	2	Processing version of data	ontime2	14532.677141011	Sum of GTIs [s]
			ontime3	14538.959121525	Sum of GTIs [s]
			l1events	537943	Number of level 1 events

### 2.1.4 Events

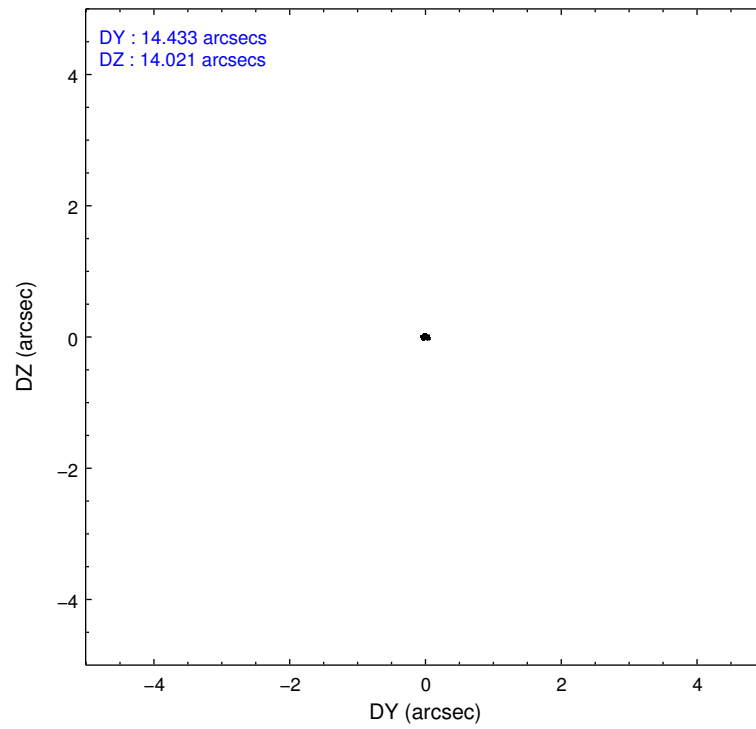
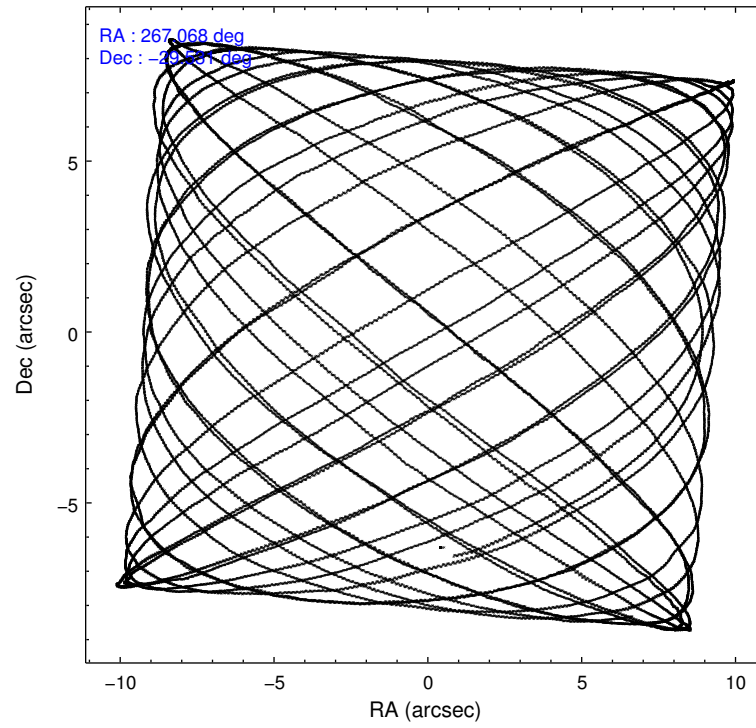
	ccd 0	ccd 1	ccd 2	ccd 3
level 1 events	127805	135067	138021	137050
rejected events	107499	110507	118880	118177
rejected %	84%	81%	86%	86%

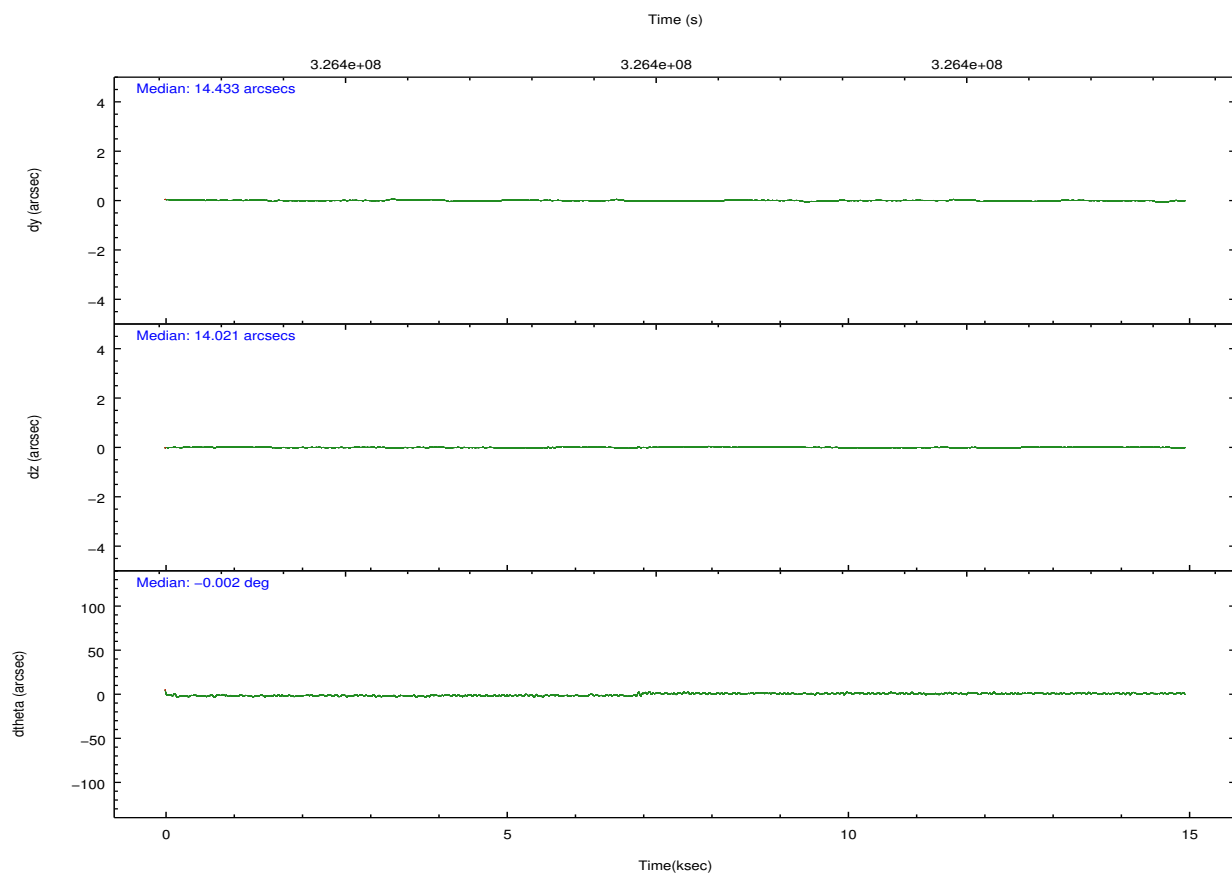
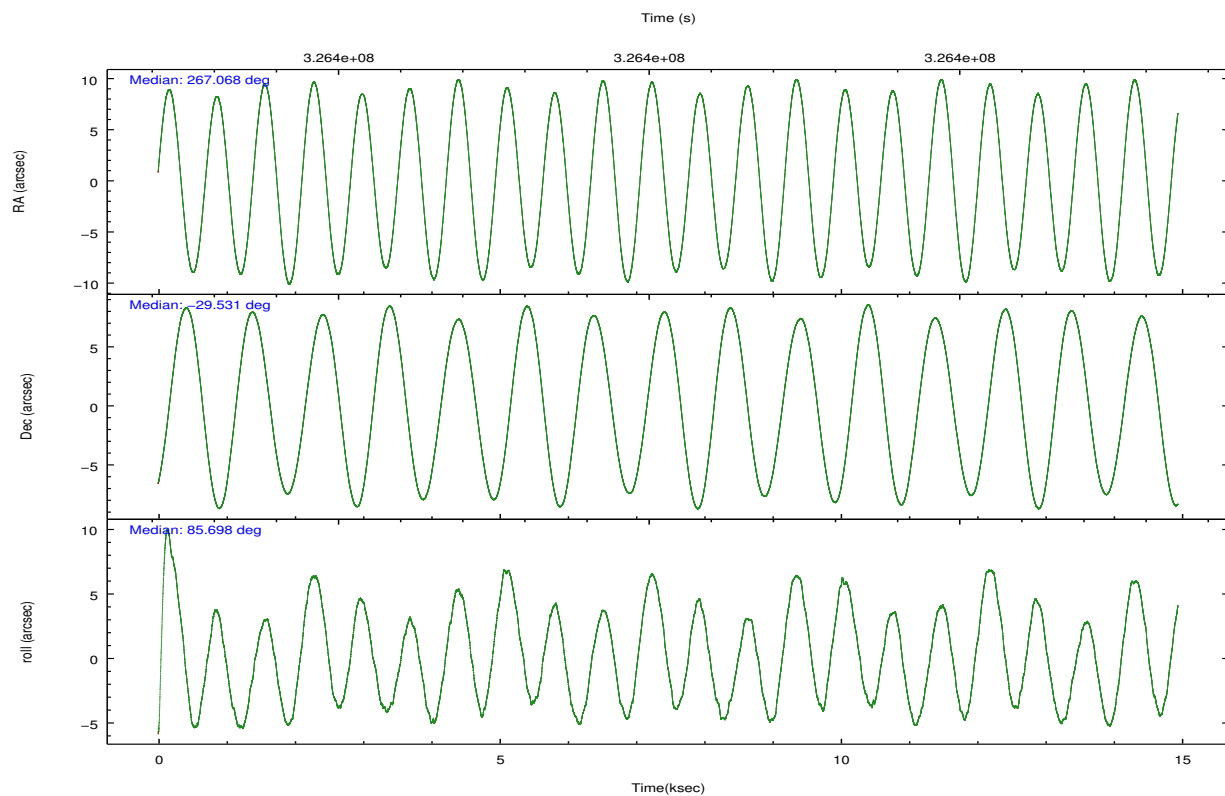
	ccd 0	ccd 1	ccd 2	ccd 3
grade 0 events	9798	13002	9342	9031
	7%	9%	6%	6%
grade 1 events	92	102	99	116
	0%	0%	0%	0%
grade 2 events	4150	4400	3836	3638
	3%	3%	2%	2%
grade 3 events	1755	1742	1609	1629
	1%	1%	1%	1%
grade 4 events	1599	1741	1624	1573
	1%	1%	1%	1%
grade 5 events	5797	6028	5412	6490
	4%	4%	3%	4%
grade 6 events	3015	3688	2742	3013
	2%	2%	1%	2%
grade 7 events	101599	104364	113357	111560
	79%	77%	82%	81%

## 2.2 Compared Parameters

Parameter	Planned	Actual	Parameter	Planned	Actual
Instrument	ACIS	ACIS	Obspar format version number	7	7
Detector	ACIS-0123	ACIS-0123	Obspar file type	PREDICTED	ACTUAL
Grating	NONE	NONE	Obspar update status	NONE	UPDATED
Data mode	VFAINT	VFAINT	Number of optional ACIS chips dropped	0	0
Observation mode	POINTING	POINTING	On-chip summing requested	N	N
[deg] Pointing RA	267.081738	267.0679083419175	Subarray requested	NONE	NONE
[deg] Pointing Dec	-29.555603	-29.53086758413635	Alternating exposures requested	N	N
[deg] Pointing Roll	85.505793	85.70765866790781	[s] Primary exposure time	0.000000	3.1
[mm] SIM focus pos	-0.782348	-0.7809083437167272			
[mm] SIM defocus	0	0.001439871863259334			
[mm] SIM translation stage pos	-233.592463	-233.5874344608287			
[mm] SIM translation stage offset	0	-0.005018542100998502			
[s] Observation start time (MET)	326393009.184000	326392633.61803			
Observation start date	2008-05-05T16:42:24	2008-05-05T16:37:13			
[s] Observation end time (MET)	326407764.184000	326407898.43128			
Observation end date	2008-05-05T20:48:19	2008-05-05T20:51:38			
Read mode	TIMED	TIMED			

## 2.3 Aspect



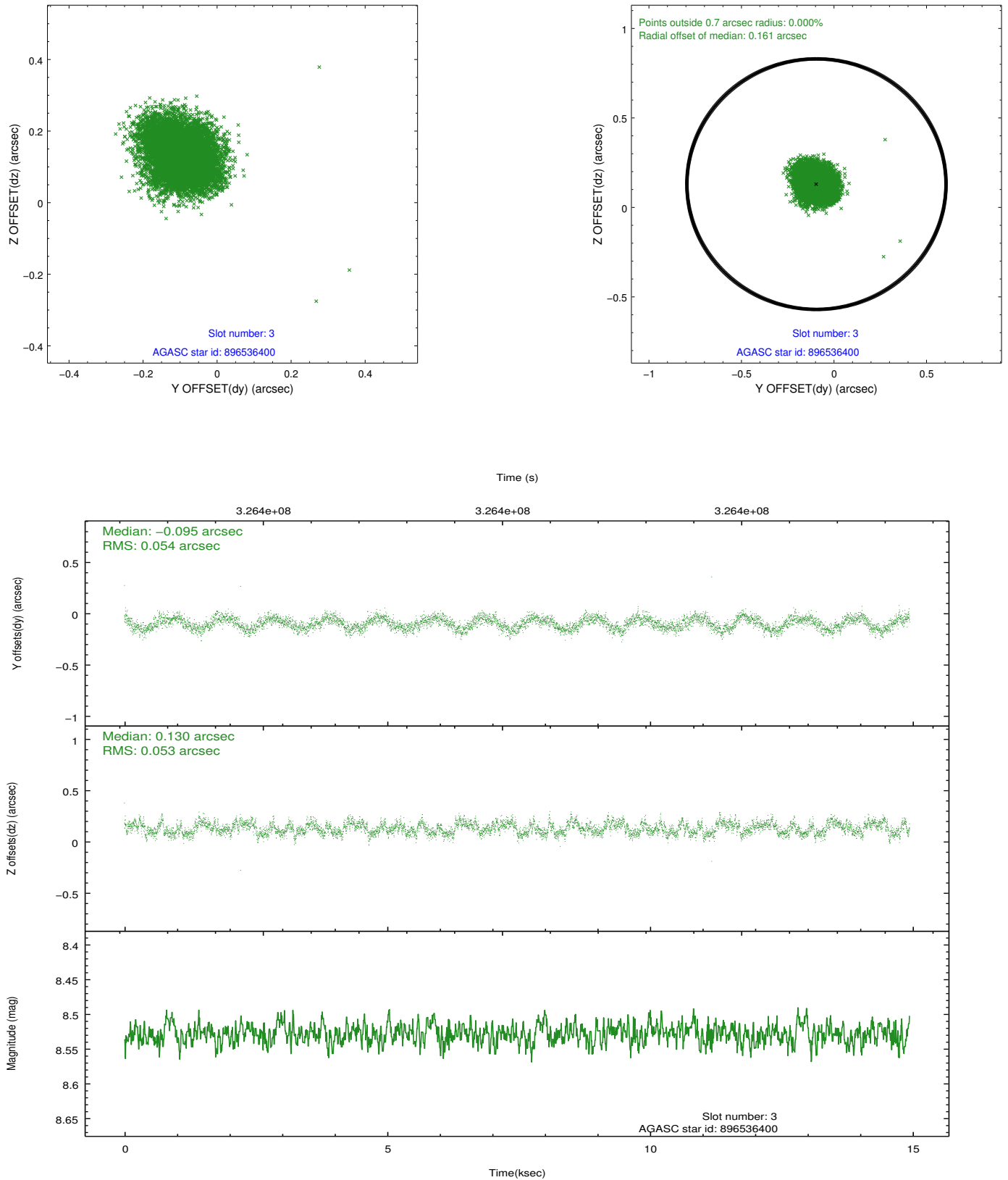


### Slot Statistics

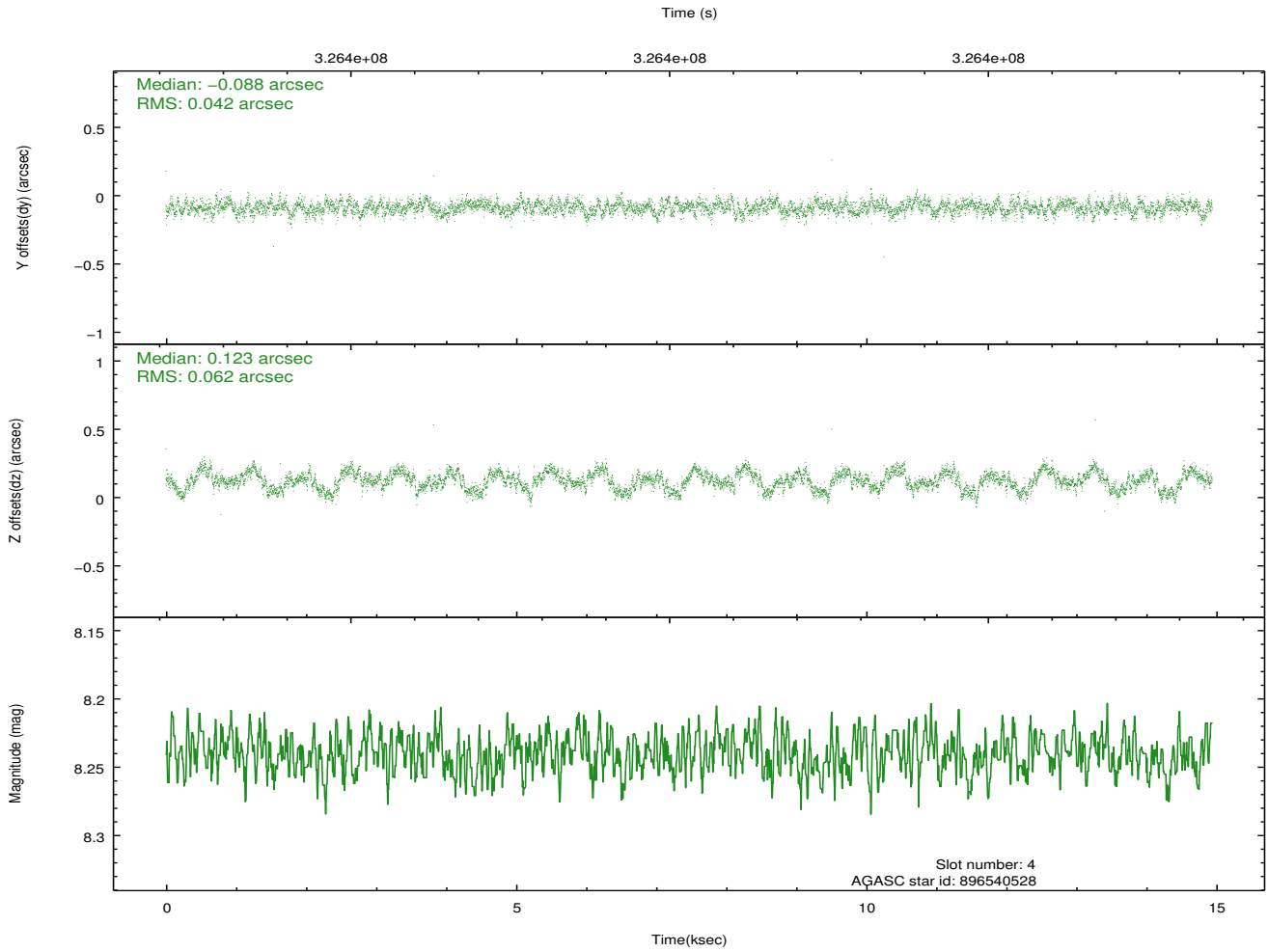
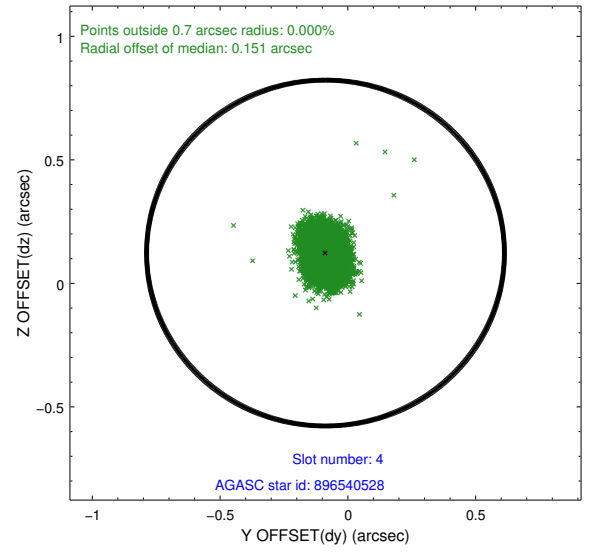
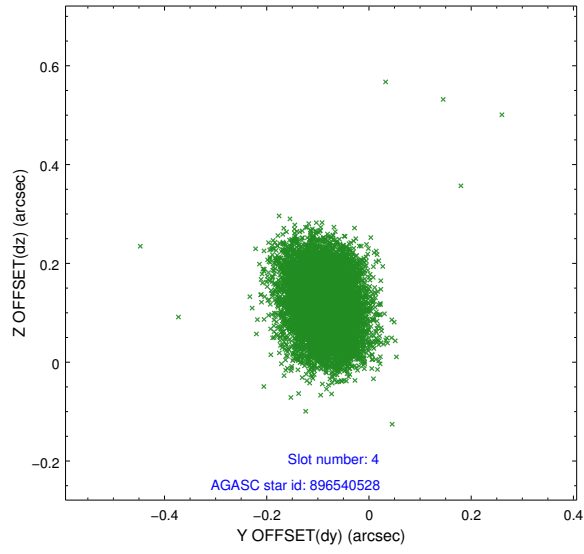
slot	status	id	mag	n_pts	med_dy	med_dz	dr1	dr2	ra	dec	mean_y	mean_z
0	FID	ACIS-I-2	6.97	3646	-0.061	-0.016	0.013	0.034	0.000000	0.000000	-769.19	-843.97
1	FID	ACIS-I-4	6.98	3645	0.142	0.045	0.009	0.017	0.000000	0.000000	2144.93	1062.11
2	FID	ACIS-I-5	7.04	3646	-0.181	0.040	0.012	0.020	0.000000	0.000000	-1822.74	1060.30
3	GUIDE	896536400	8.53	7288	-0.095	0.130	0.081	0.127	267.359146	-29.438655	487.12	-833.89
4	GUIDE	896540528	8.24	7291	-0.088	0.123	0.080	0.127	267.368305	-29.314773	933.97	-829.09
5	GUIDE	896541168	8.16	7287	0.262	-0.292	0.060	0.097	266.319970	-29.850801	-1253.57	2286.88
6	GUIDE	896541360	7.69	7291	-0.056	-0.077	0.070	0.108	266.684478	-29.453744	265.65	1270.35
7	GUIDE	896542048	9.22	7282	-0.021	0.117	0.093	0.149	267.742937	-29.132026	1677.88	-1953.21

## 2.4 Star Slots

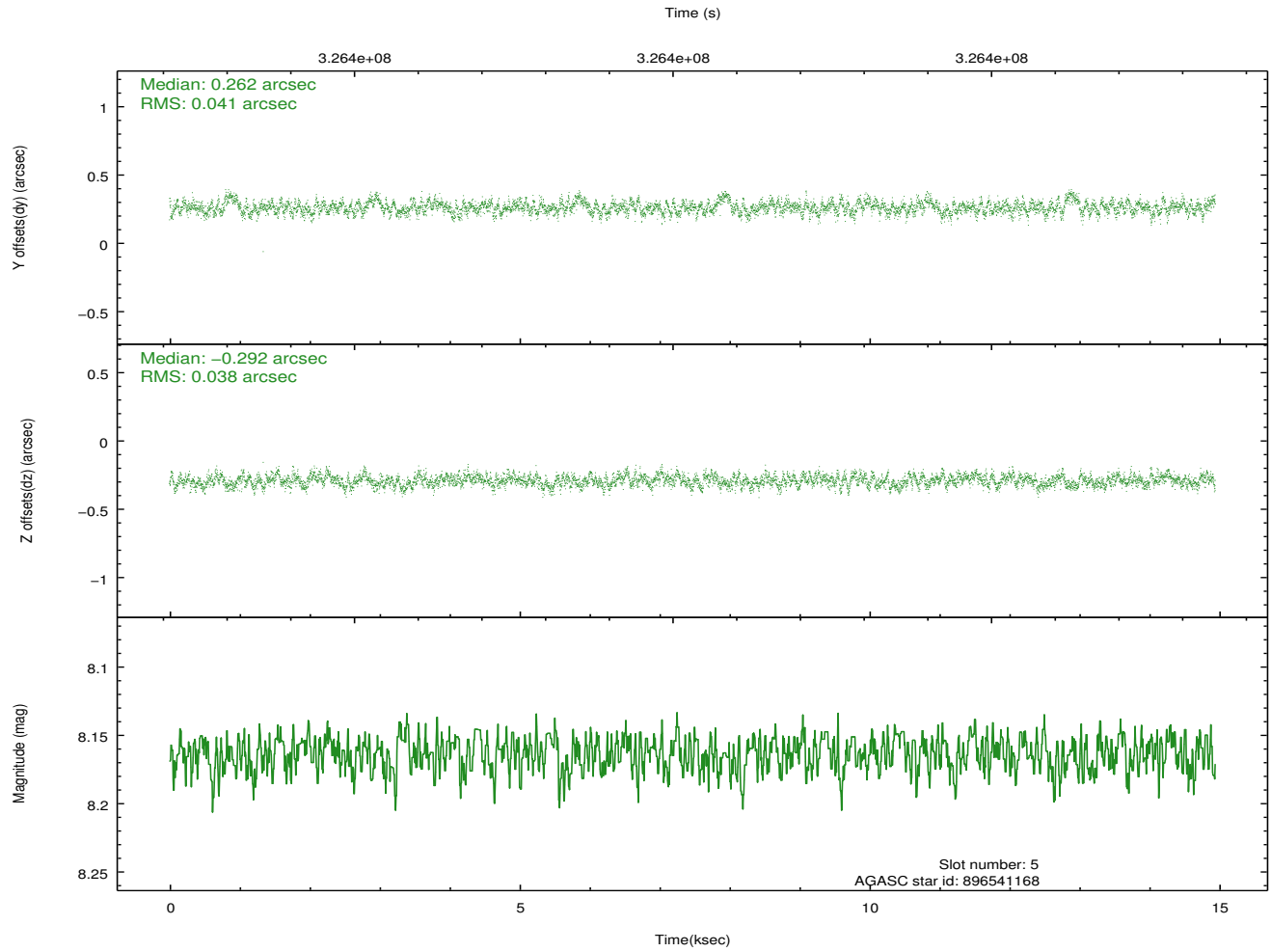
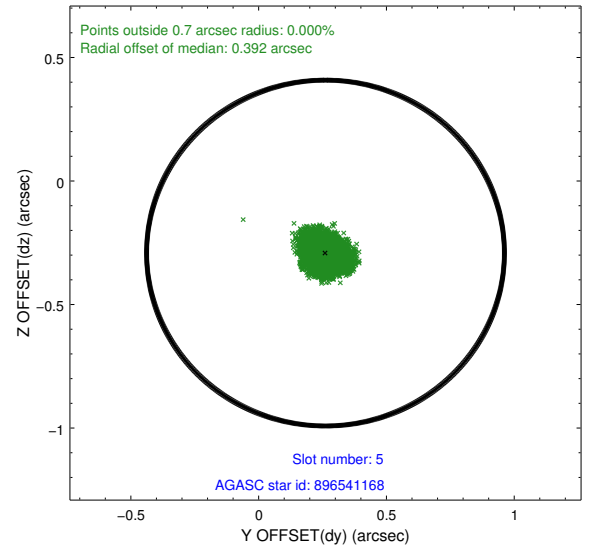
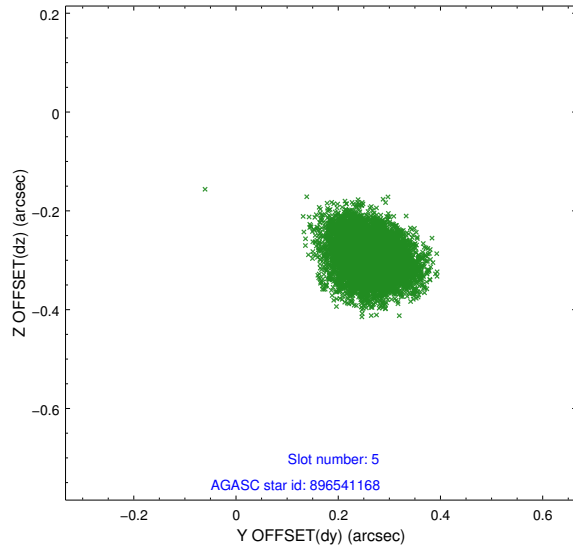
### 2.4.1 Slot 3



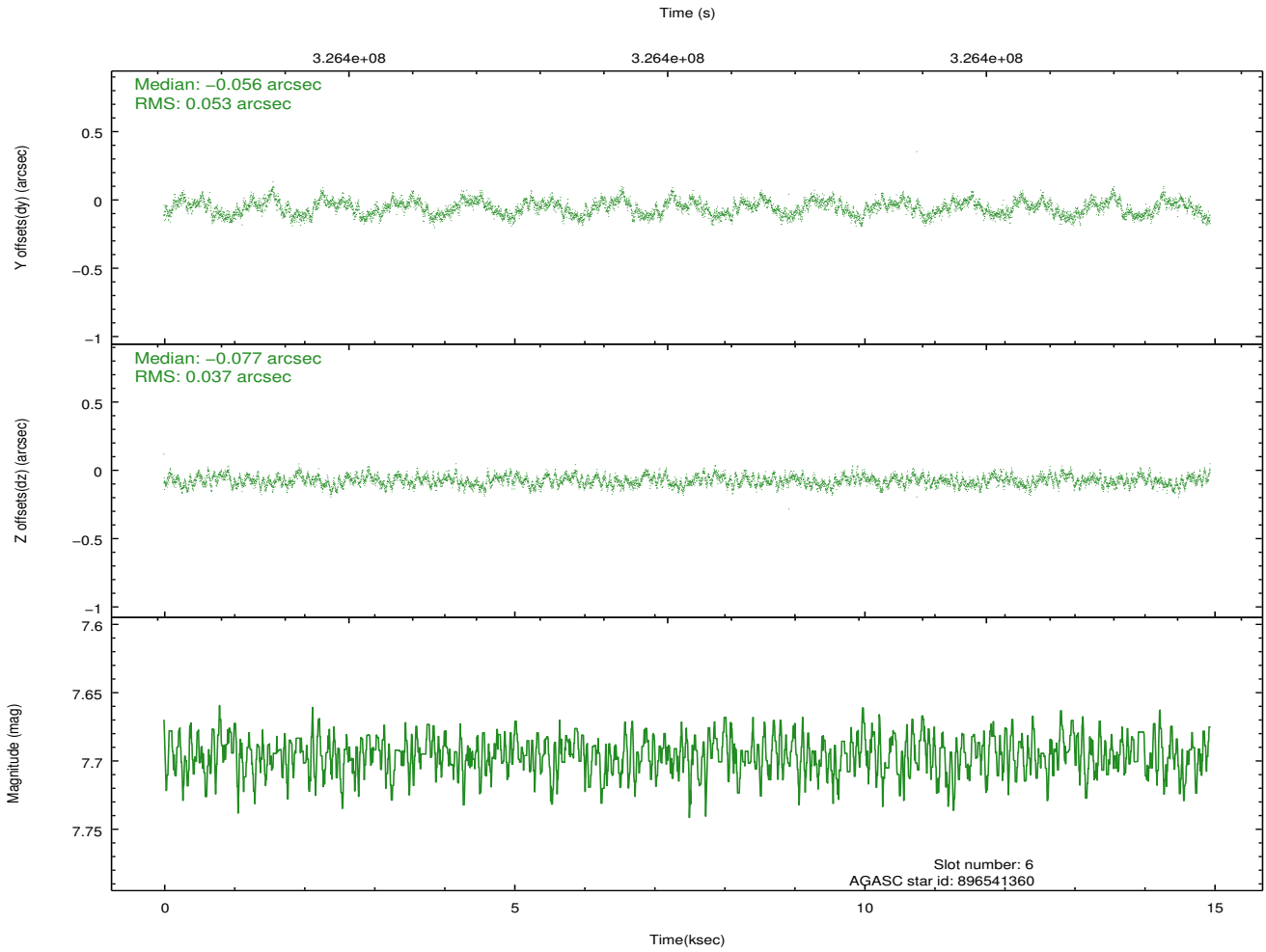
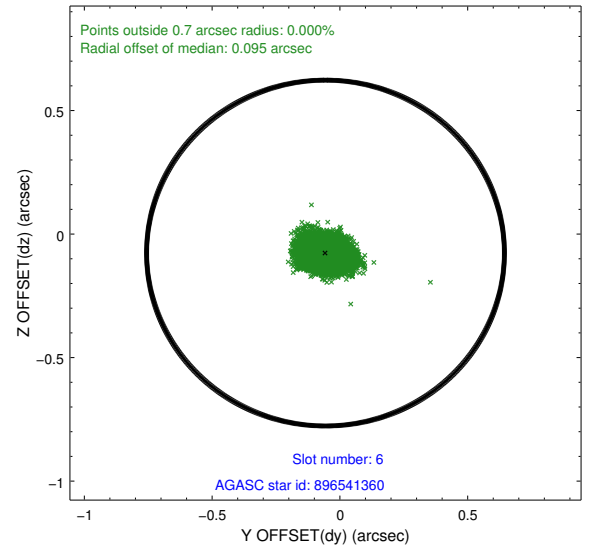
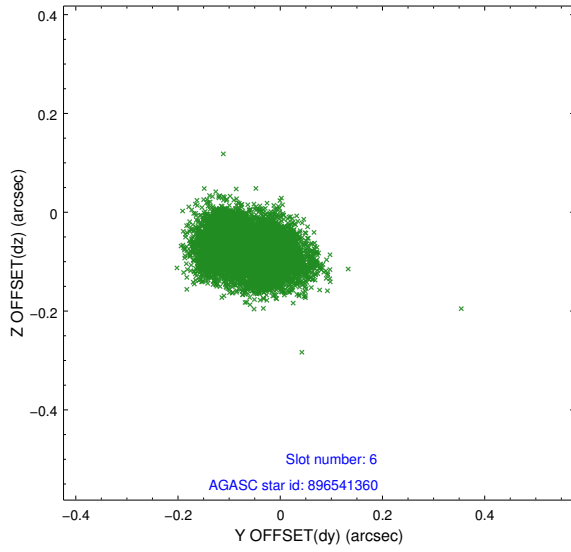
## 2.4.2 Slot 4



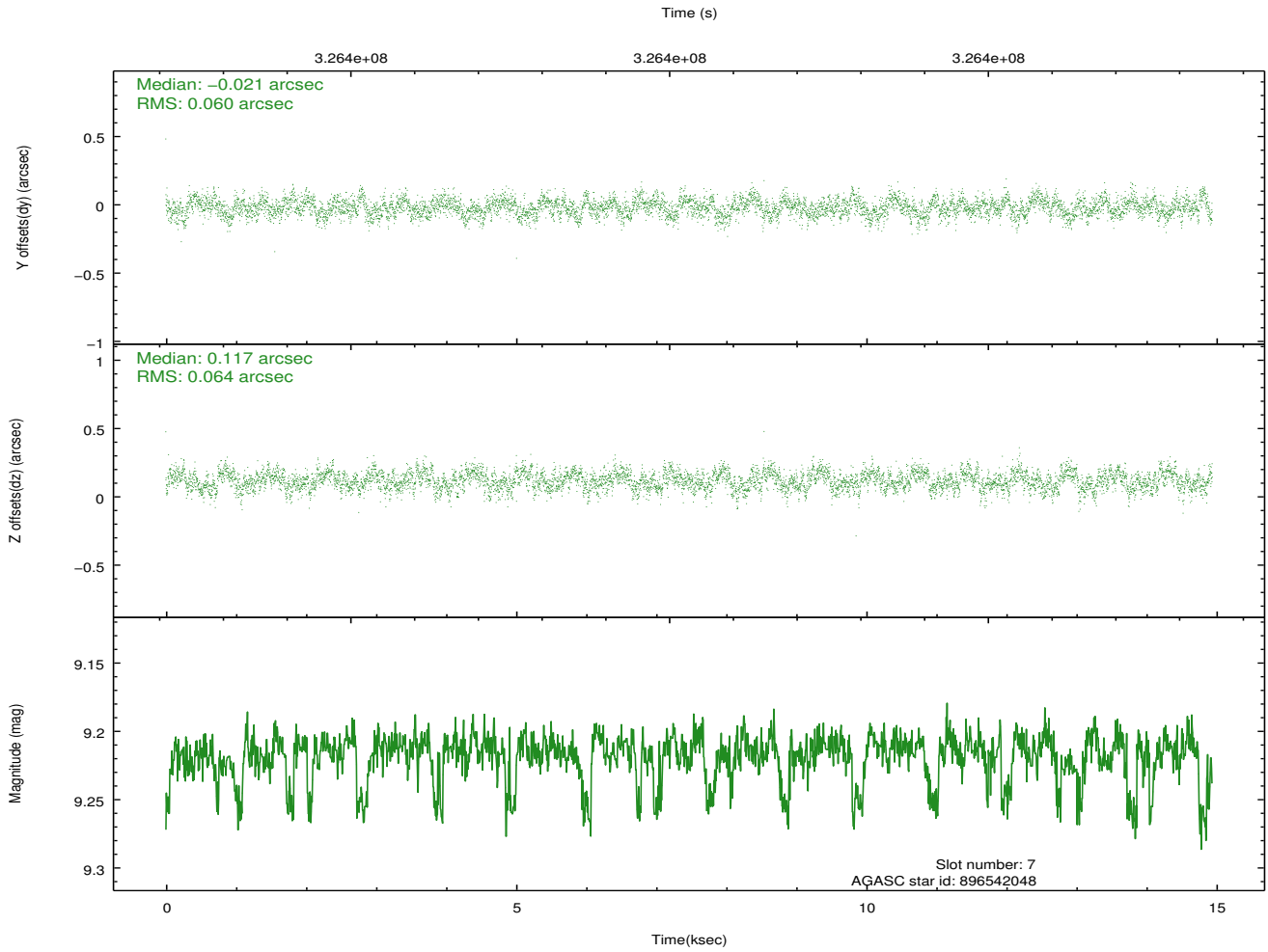
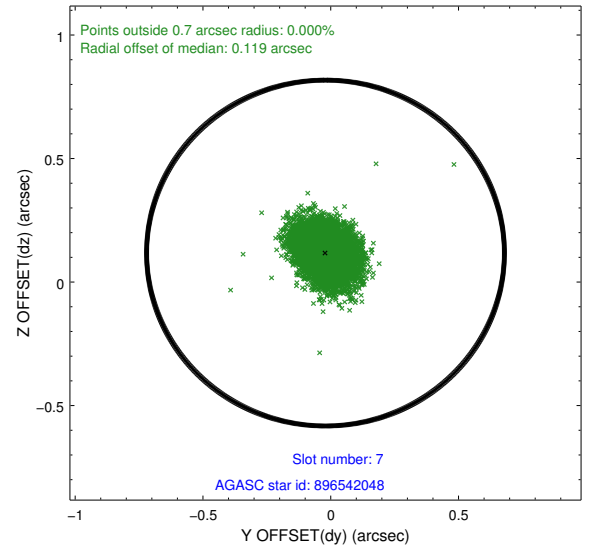
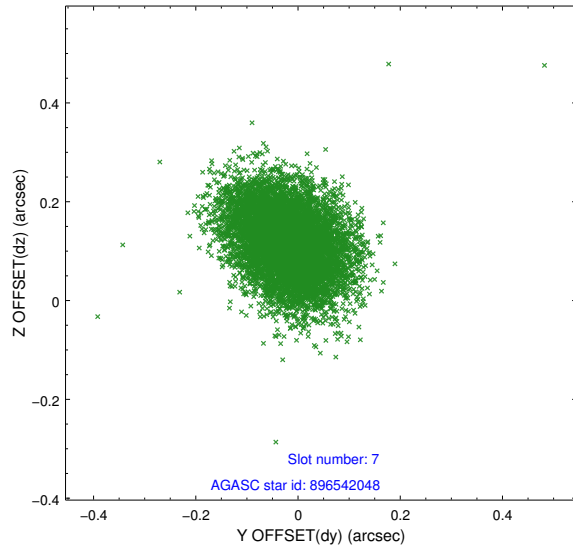
### 2.4.3 Slot 5



## 2.4.4 Slot 6

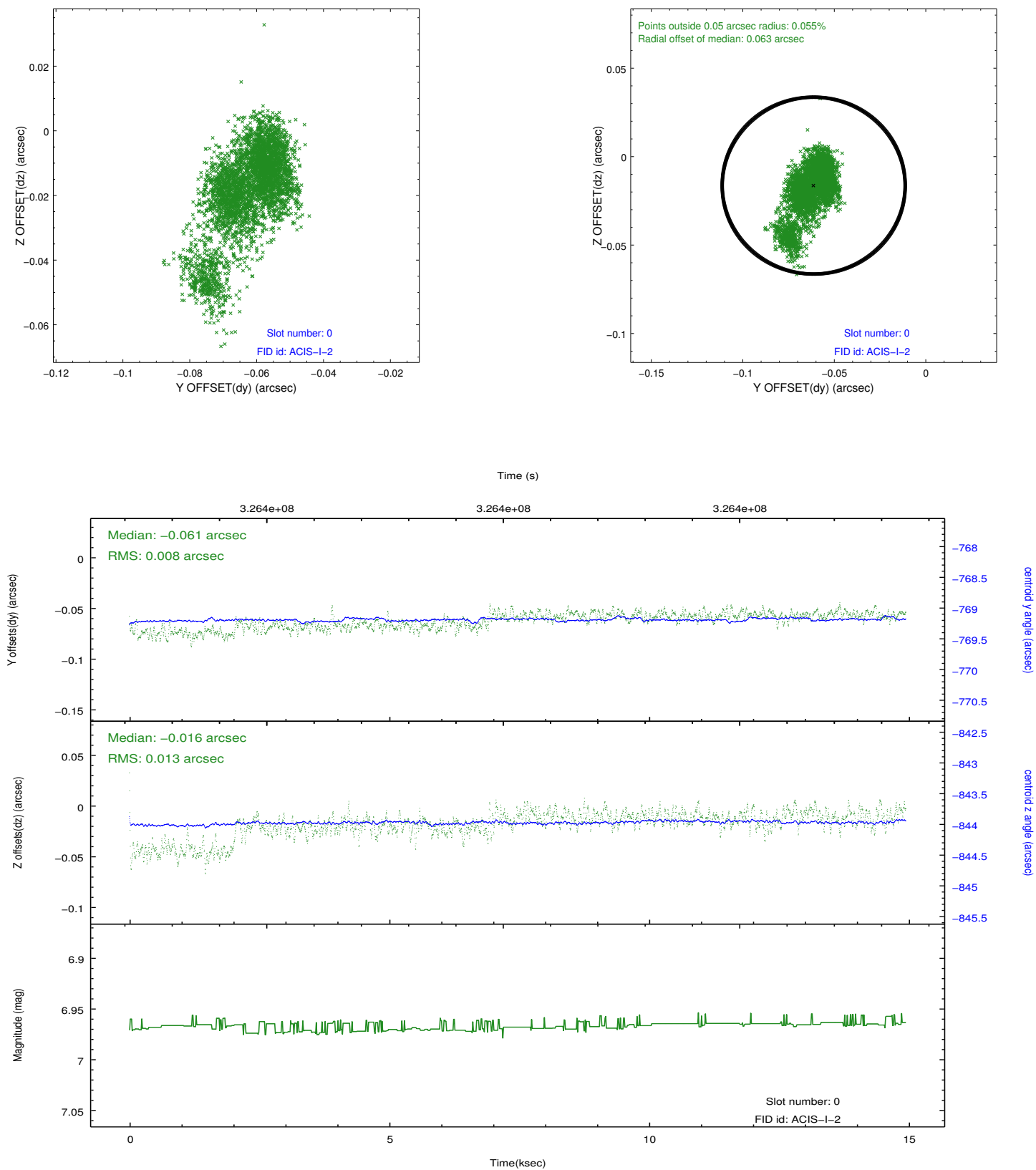


## 2.4.5 Slot 7

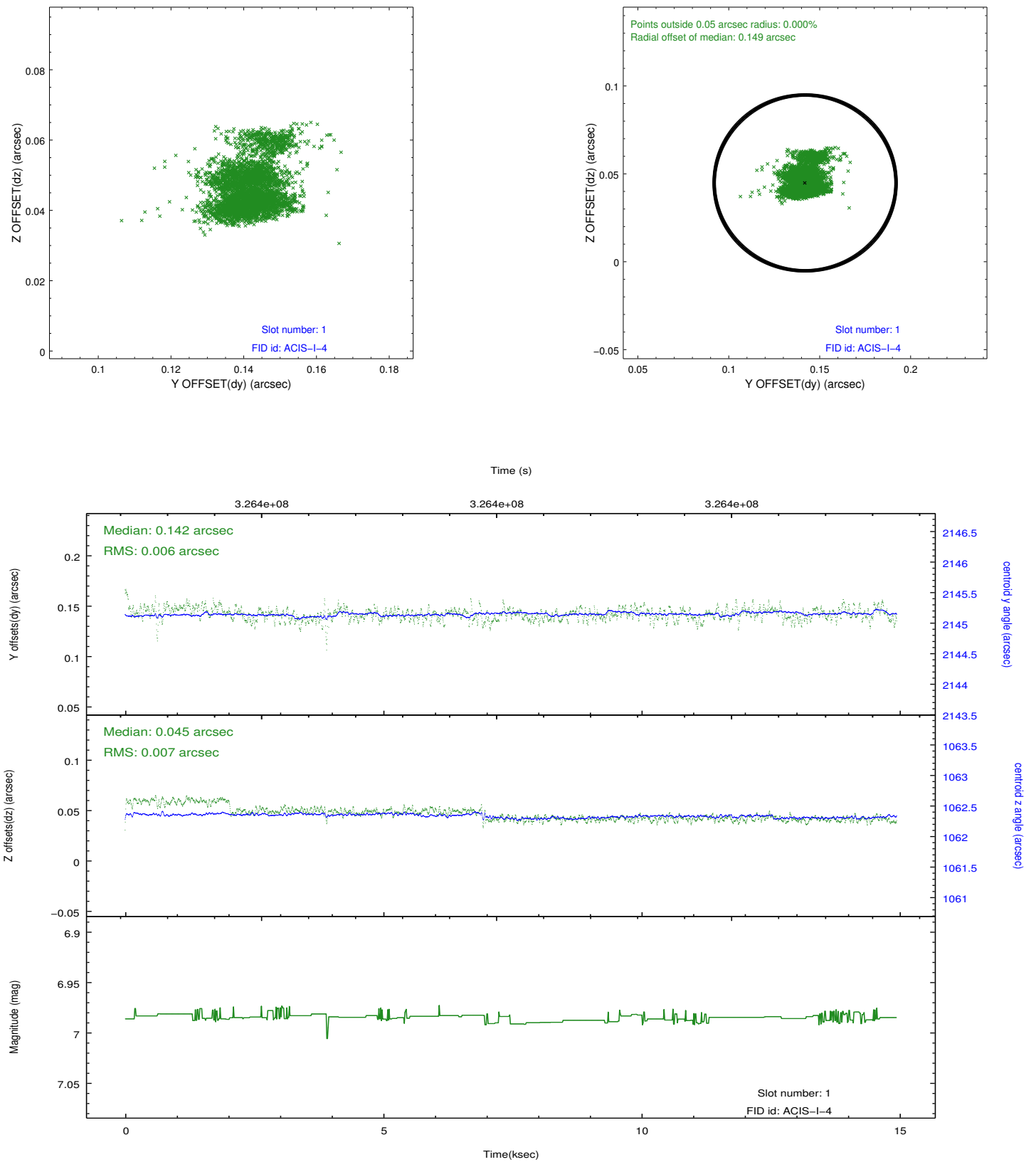


## 2.5 FID Slots

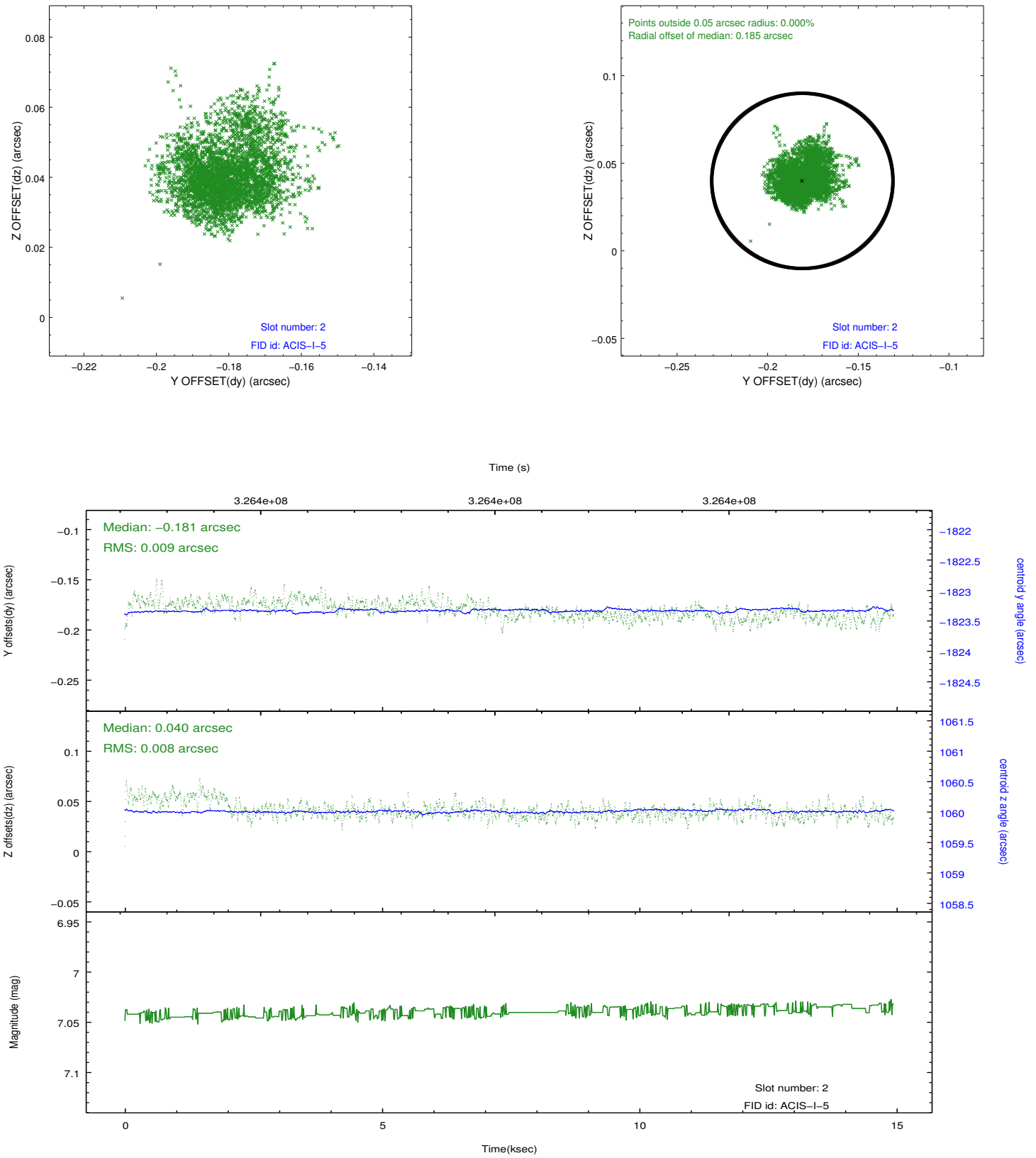
### 2.5.1 Slot 0



## 2.5.2 Slot 1



### 2.5.3 Slot 2



## A Summary

### A.1 Status

V&V Scientist	Jen Lauer
V&V Date (YYYY-MM-DD)	2012.05.15
V&V Edition	1
V&V Disposition and Status	OK
V&V Charge Time	14.5389591

### A.2 Comments

Joint Proposal: NOAO. Roll preference met.