

# V&V Reference Report

## L2 ASCDS Version : 8.4.4

Observation 9131 - L2 Version 3  
Chandra X-Ray Center

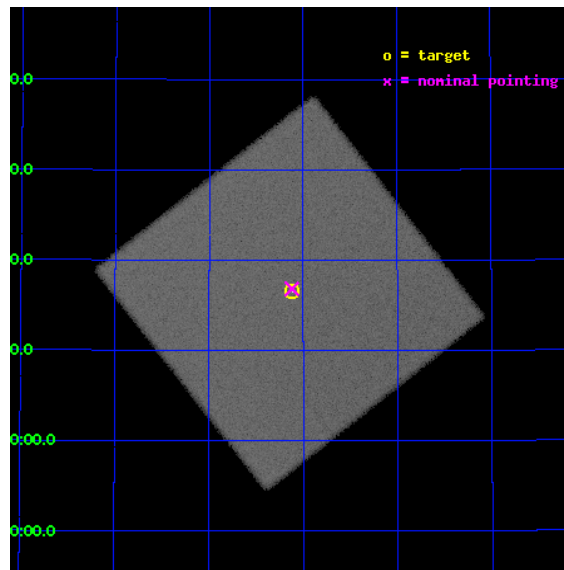
L2 Processing Date : Aug 12 2012

## Contents

<b>1</b>	<b>Front</b>	<b>2</b>
<b>2</b>	<b>OBI</b>	<b>3</b>
2.1	OBI . . . . .	3
2.1.1	Images . . . . .	3
2.1.2	Parameters . . . . .	4
2.1.3	Events . . . . .	4
2.2	Compared Parameters . . . . .	5
2.3	Aspect . . . . .	6
2.4	Star Slots . . . . .	9
2.4.1	Slot 3 . . . . .	9
2.4.2	Slot 4 . . . . .	10
2.4.3	Slot 5 . . . . .	11
2.4.4	Slot 6 . . . . .	12
2.4.5	Slot 7 . . . . .	13
2.5	FID Slots . . . . .	14
2.5.1	Slot 0 . . . . .	14
2.5.2	Slot 1 . . . . .	15
2.5.3	Slot 2 . . . . .	16
<b>A</b>	<b>Summary</b>	<b>17</b>
A.1	Status . . . . .	17
A.2	Comments . . . . .	17

# 1 Front

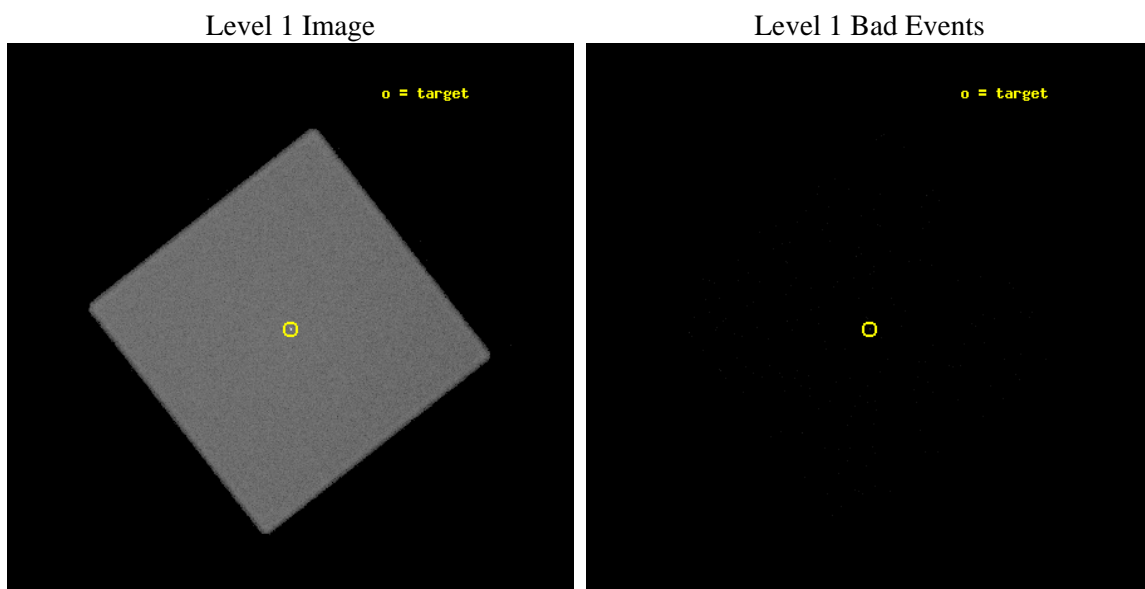
seq_num	500993	Sequence number
obs_id	9131	Observation id
title	ToO Observations of Soft Gamma Repeaters	Proposal title
observer	Dr. Peter Woods	Principal investigator
object	SGR 0501+4516	Source name
ra_targ	75.278333	Observer's specified target RA [deg]
dec_targ	45.2765	Observer's specified target Dec [deg]
ra_nom	75.279940136489	Nominal RA [deg]
dec_nom	45.280757078636	Nominal Dec [deg]
roll_nom	96.903334226323	Nominal Roll [deg]
revision	3	Processing version of data
ontime	10188.500501335	[s]
livetime	10077.320326173	Ontime multiplied by DTCOR
l2events	664870	Number of level 2 events



## 2 OBI

### 2.1 OBI

#### 2.1.1 Images



### 2.1.2 Parameters

obi_num	0	Obi number	sched_exp_time	10000.000000	[s] Scheduled observation exposure time
ascdsver	8.4.5	Processing system revision	ontime	10188.500501335	[s]
caldbver	4.5.1.1	&#160	l1events	1111001	Number of level 1 events
date	2012-08-12T20:45:56	Date and time of file creation			
revision	3	Processing version of data			

### 2.1.3 Events

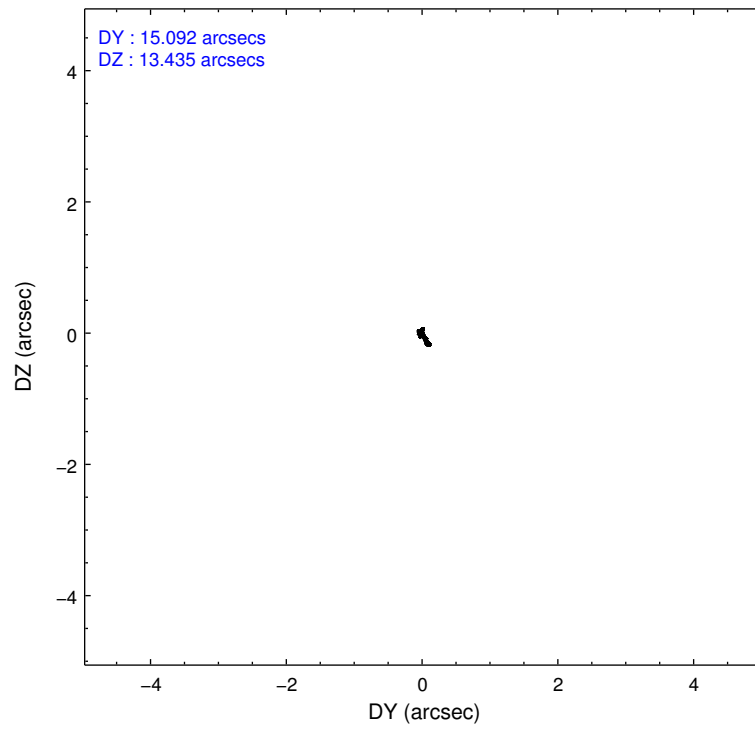
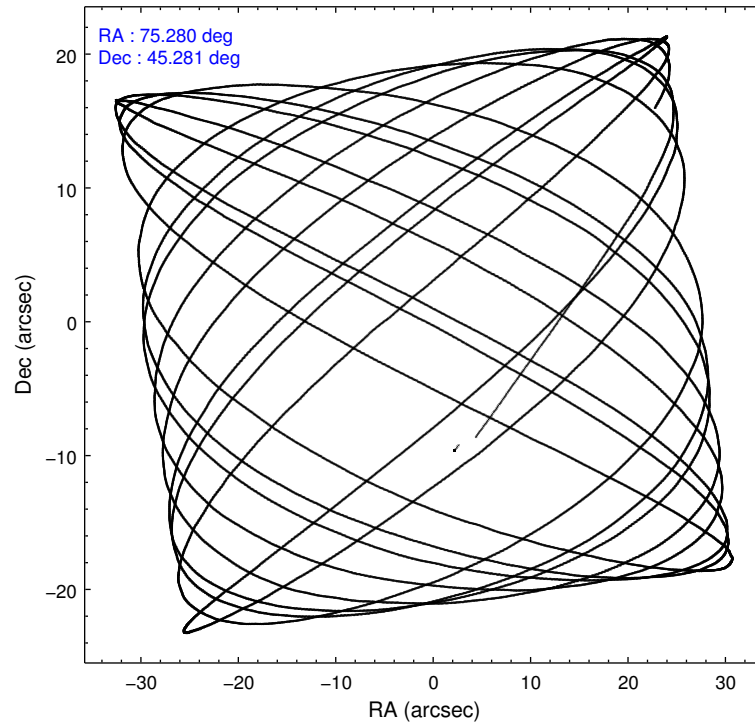
#### Level 1 Events

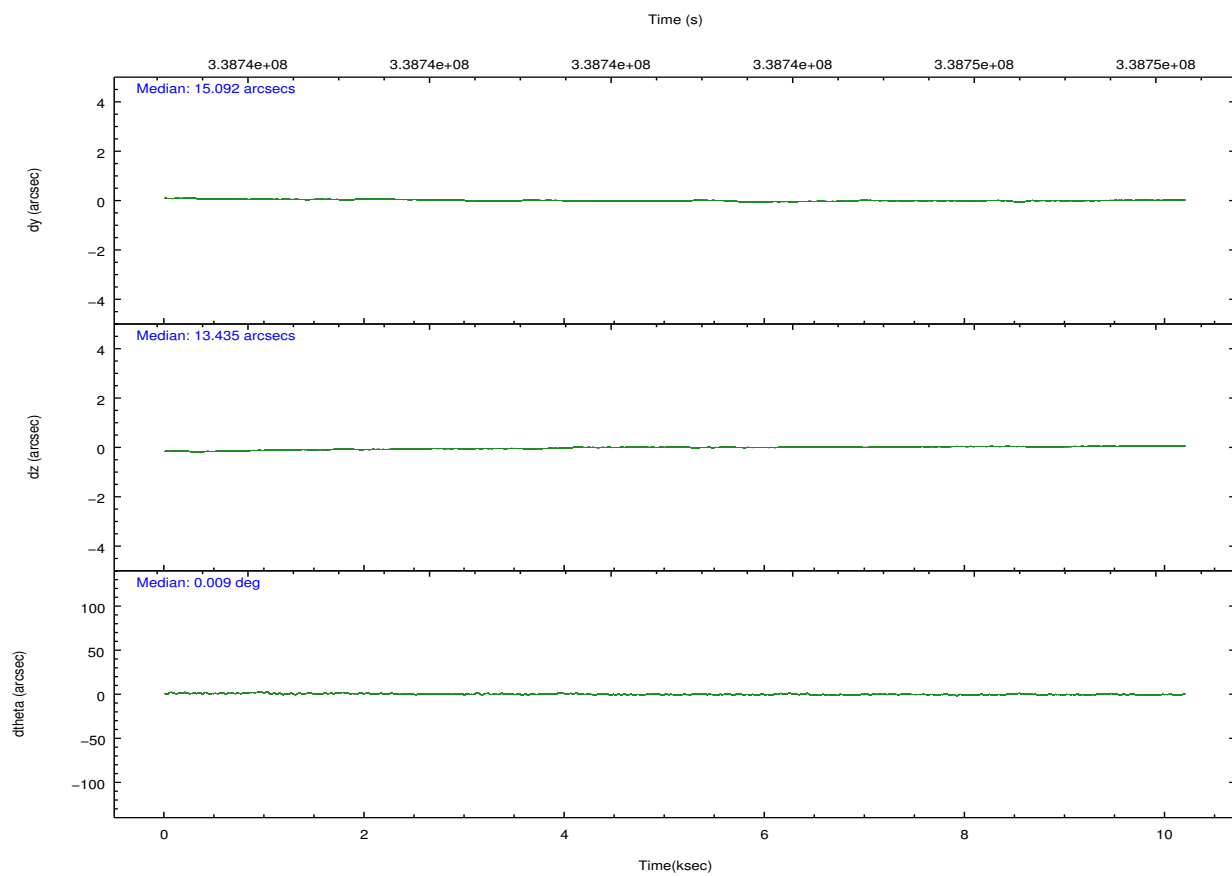
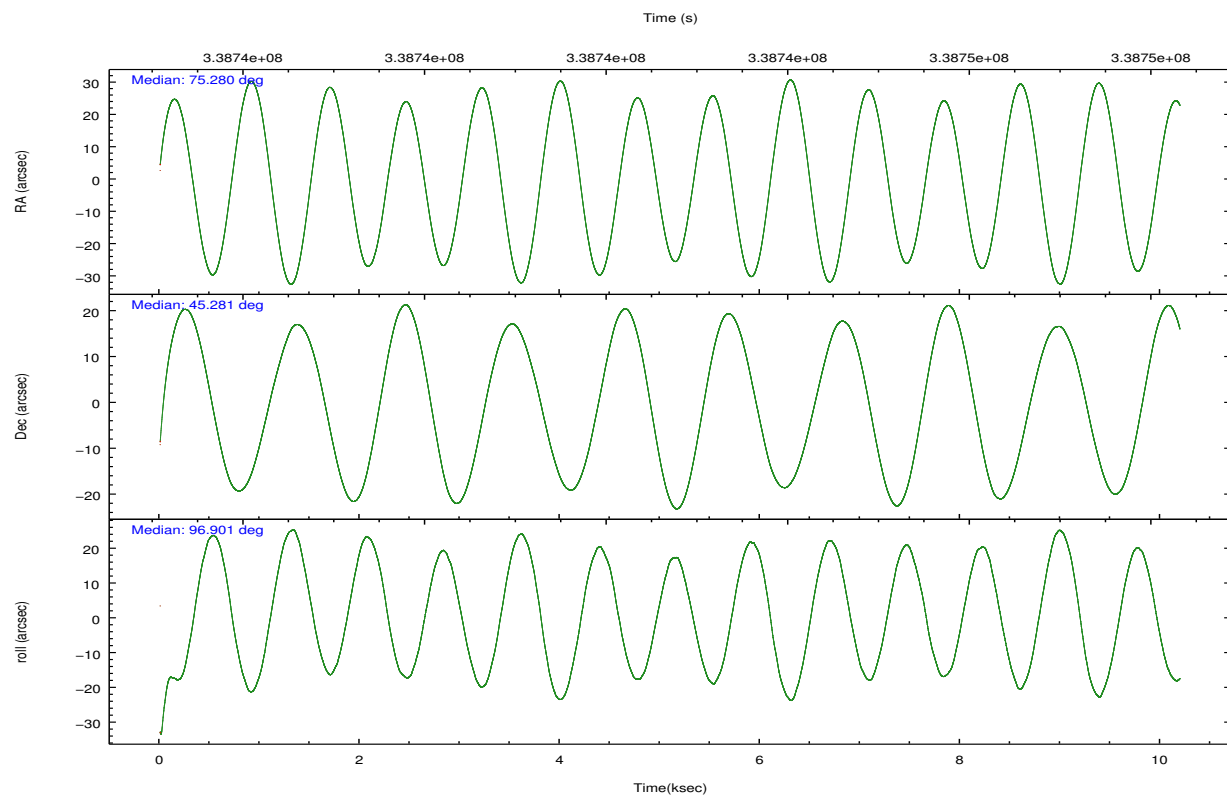
	<b>segment 0</b>
level 1 events	1111001
rejected events	137483
rejected %	12%

## 2.2 Compared Parameters

Parameter	Planned	Actual	Parameter	Planned	Actual
Instrument	HRC	HRC	Obspar format version number	7	7
Detector	HRC-I	HRC-I	Obspar file type	PREDICTED	ACTUAL
Grating	NONE	NONE	Obspar update status	NONE	UPDATED
Data mode	OBSERVING	OBSERVING			
Observation mode	POINTING	POINTING			
[deg] Pointing RA	75.303764	75.27994013648919			
[deg] Pointing Dec	45.259223	45.2807570786357			
[deg] Pointing Roll	96.981935	96.90333422632324			
[mm] SIM focus pos	-1.040293	-1.038866356238299			
[mm] SIM defocus	0	0.001426264420575141			
[mm] SIM translation stage pos	126.985494	126.9854943052878			
[mm] SIM translation stage offset	0	-5.413686238853188e-06			
[s] Observation start time (MET)	338737803.184000	338736220.58224			
Observation start date	2008-09-25T13:48:58	2008-09-25T13:23:40			
[s] Observation end time (MET)	338747803.184000	338748654.85785			
Observation end date	2008-09-25T16:35:38	2008-09-25T16:50:54			

## 2.3 Aspect



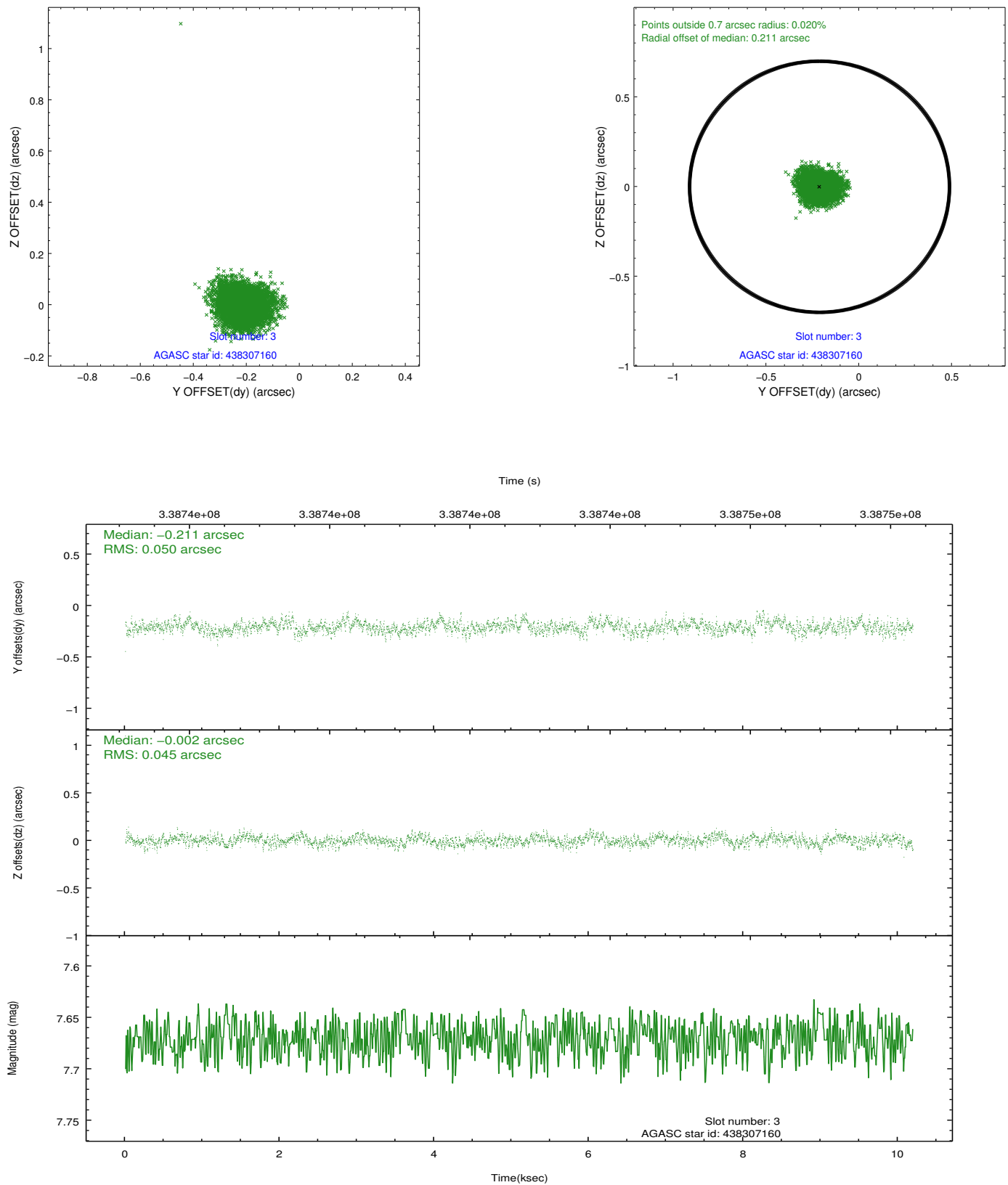


Slot Statistics

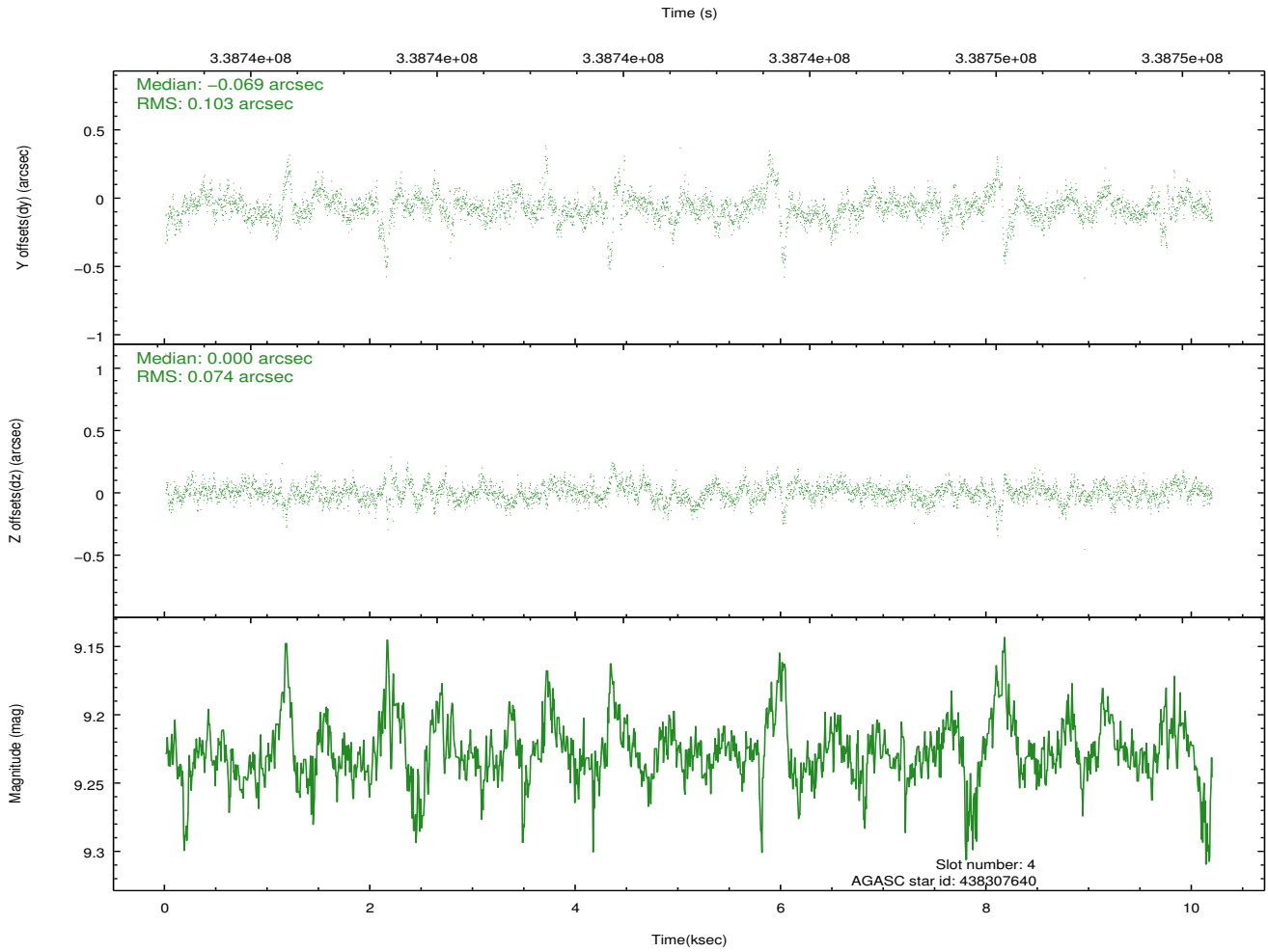
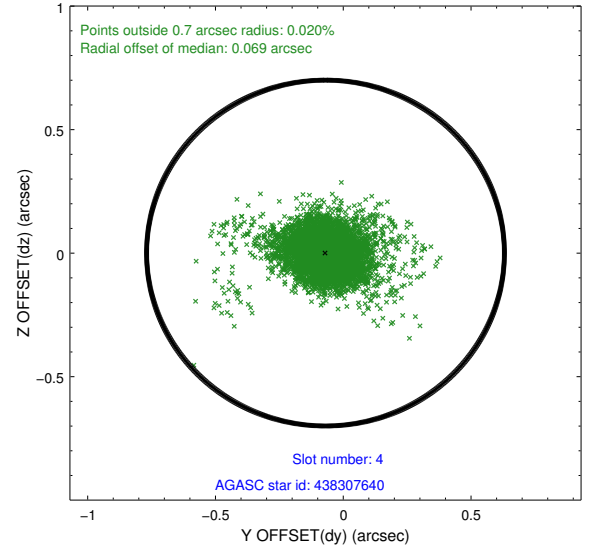
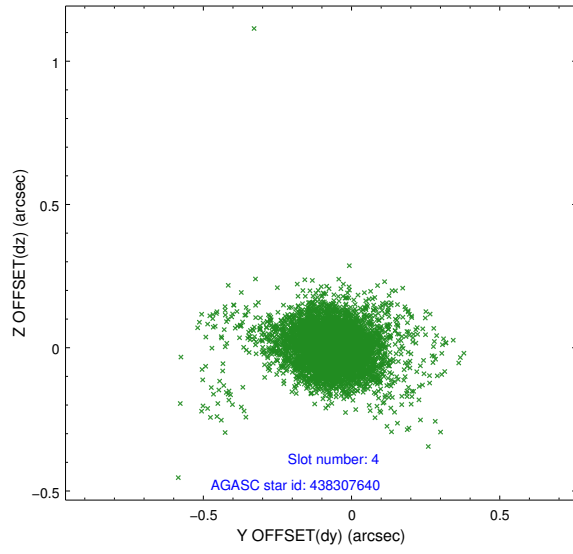
slot	status	id	mag	n_pts	med_dy	med_dz	dr1	dr2	ra	dec	mean_y	mean_z
0	FID	HRC-I-1	7.03	2486	-0.071	0.011	0.007	0.012	0.000000	0.000000	-770.98	-1301.48
1	FID	HRC-I-2	7.06	2486	0.254	-0.157	0.006	0.012	0.000000	0.000000	841.66	-1303.75
2	FID	HRC-I-3	7.11	2486	-0.064	0.056	0.006	0.011	0.000000	0.000000	-1199.11	1002.60
3	GUIDE	438307160	7.67	4972	-0.211	-0.002	0.070	0.115	75.339715	45.888971	2238.34	-364.35
4	GUIDE	438307640	9.23	4934	-0.069	0.000	0.119	0.233	75.288023	45.841930	2086.61	-215.95
5	GUIDE	438308680	8.49	4971	0.147	0.060	0.079	0.128	75.553451	45.026038	-909.27	-528.29
6	GUIDE	438314176	8.39	4970	0.008	0.052	0.074	0.120	75.326509	45.446275	661.03	-138.45
7	GUIDE	381030024	8.34	4969	0.119	-0.104	0.074	0.126	75.061936	44.874027	-1300.82	780.99

## 2.4 Star Slots

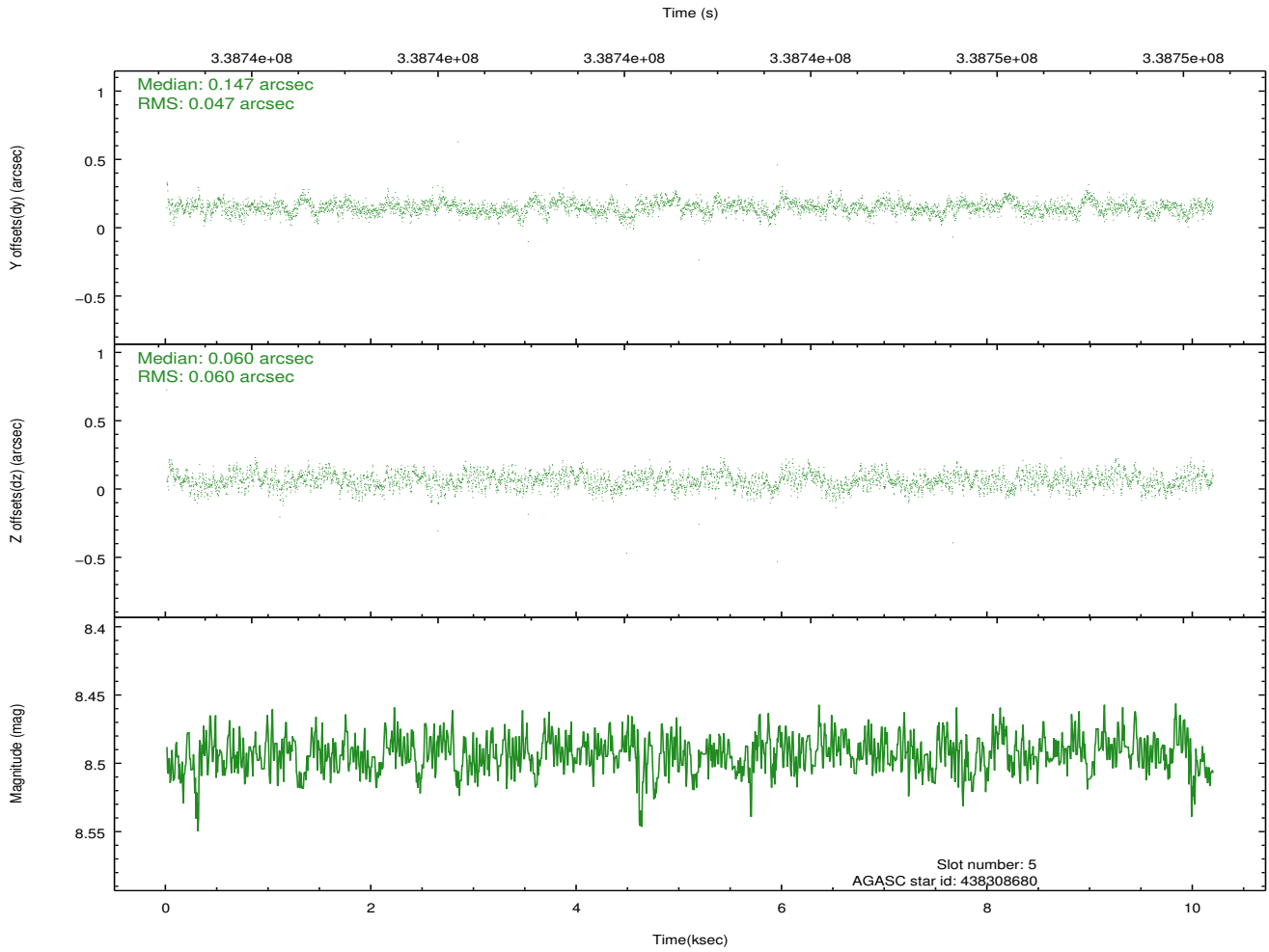
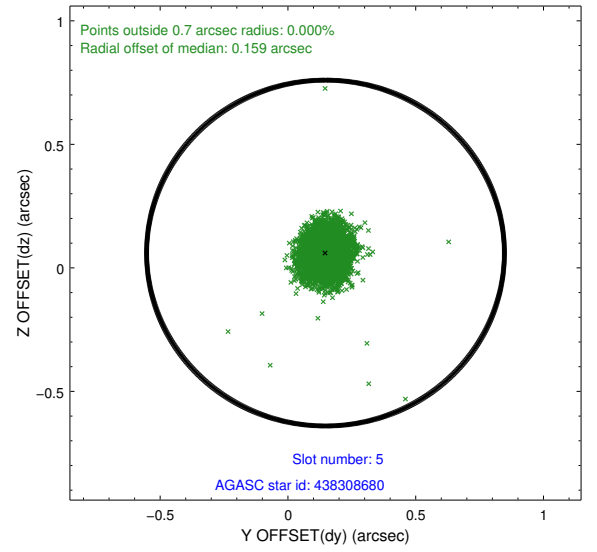
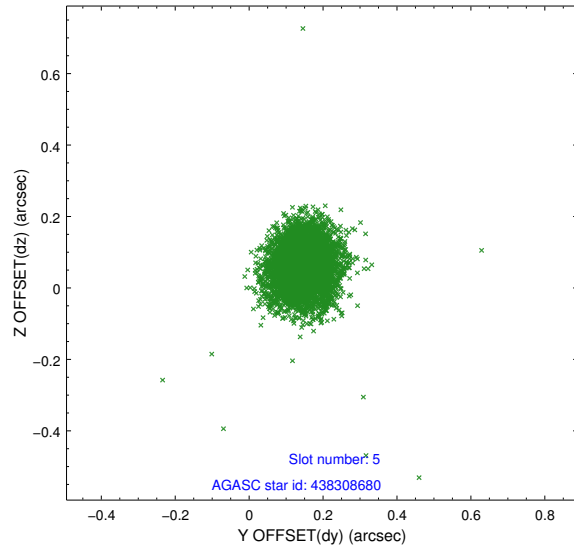
### 2.4.1 Slot 3



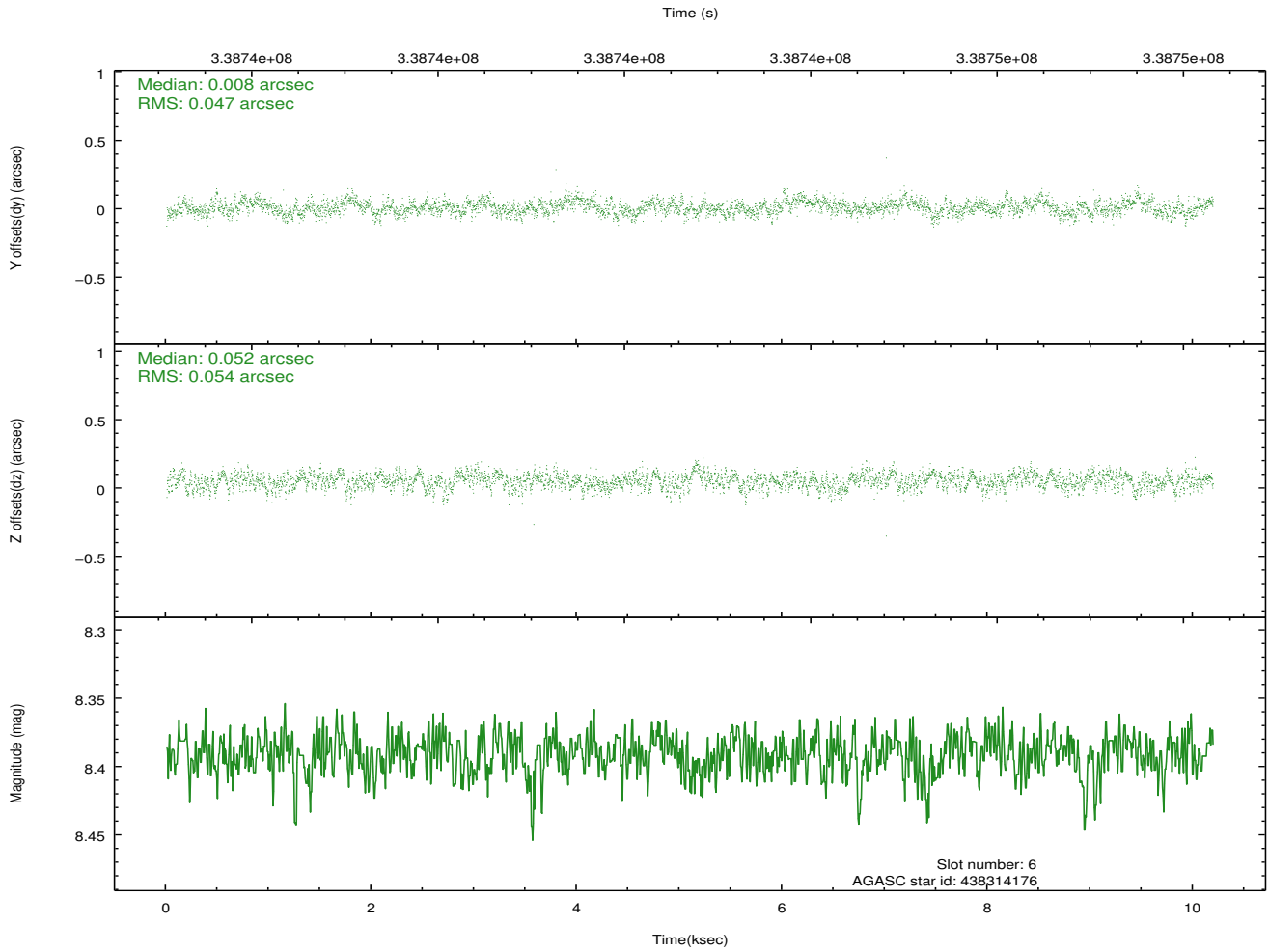
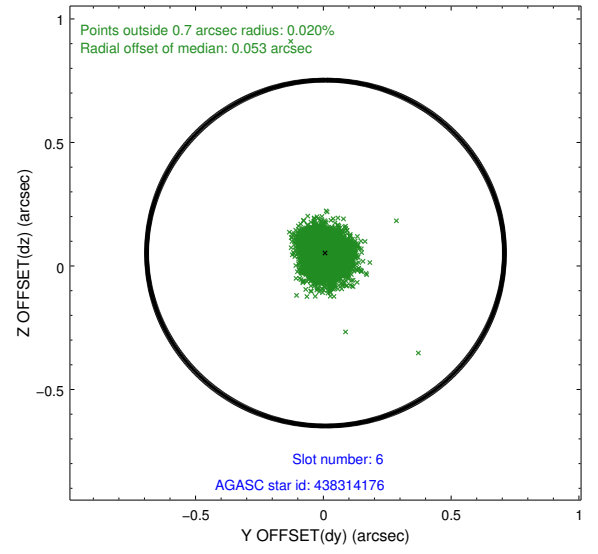
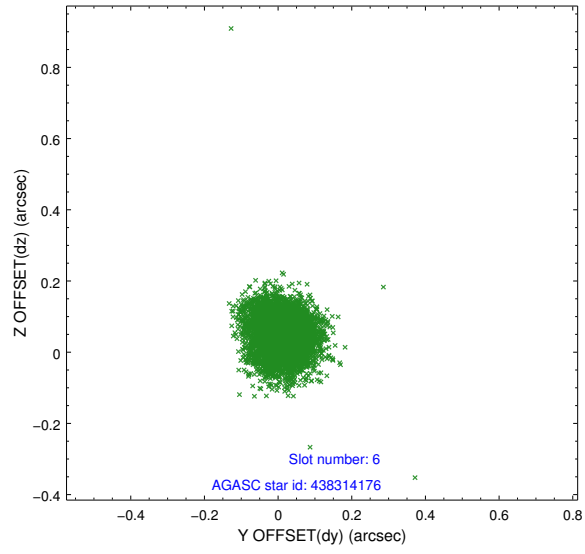
## 2.4.2 Slot 4



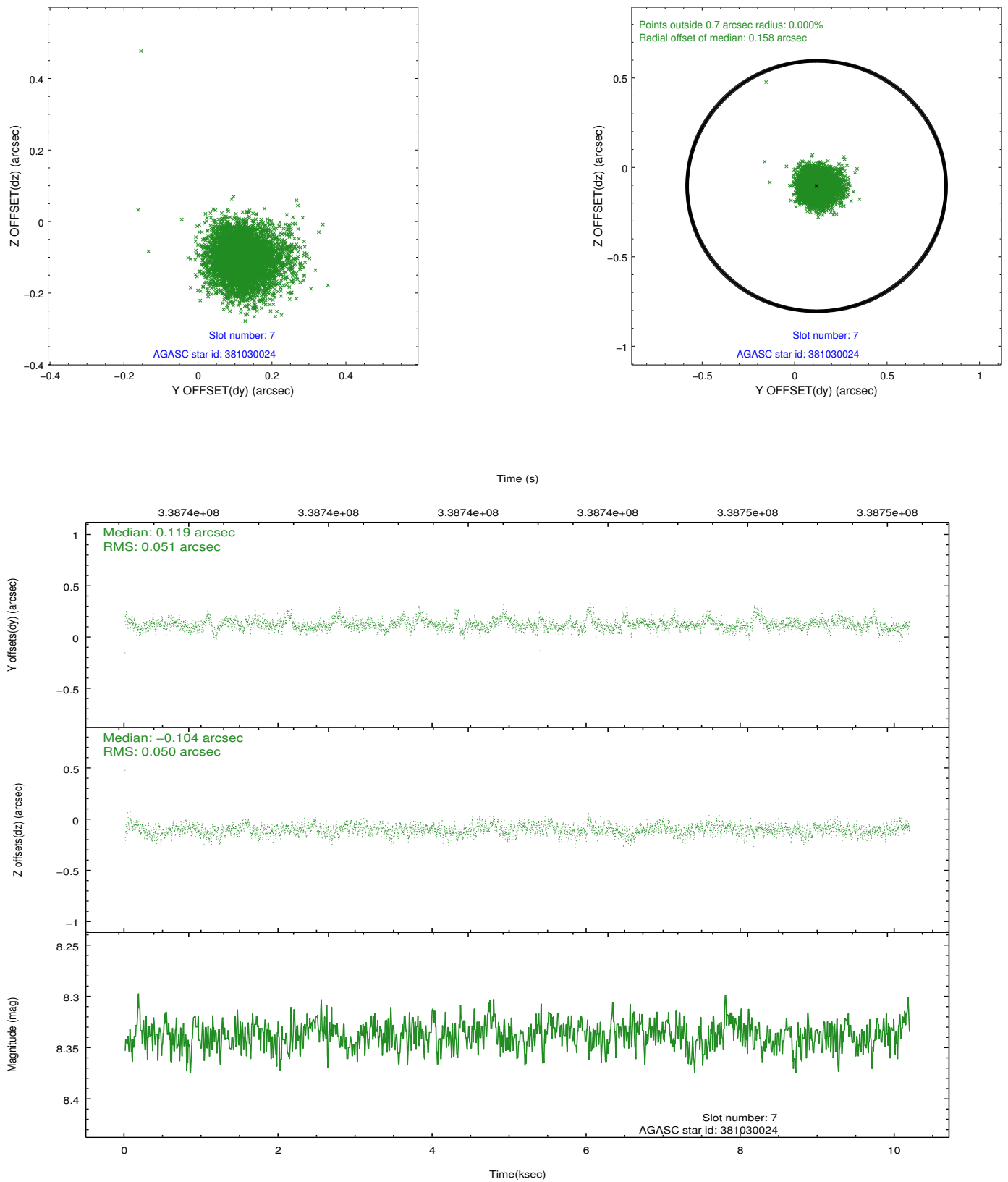
### 2.4.3 Slot 5



## 2.4.4 Slot 6

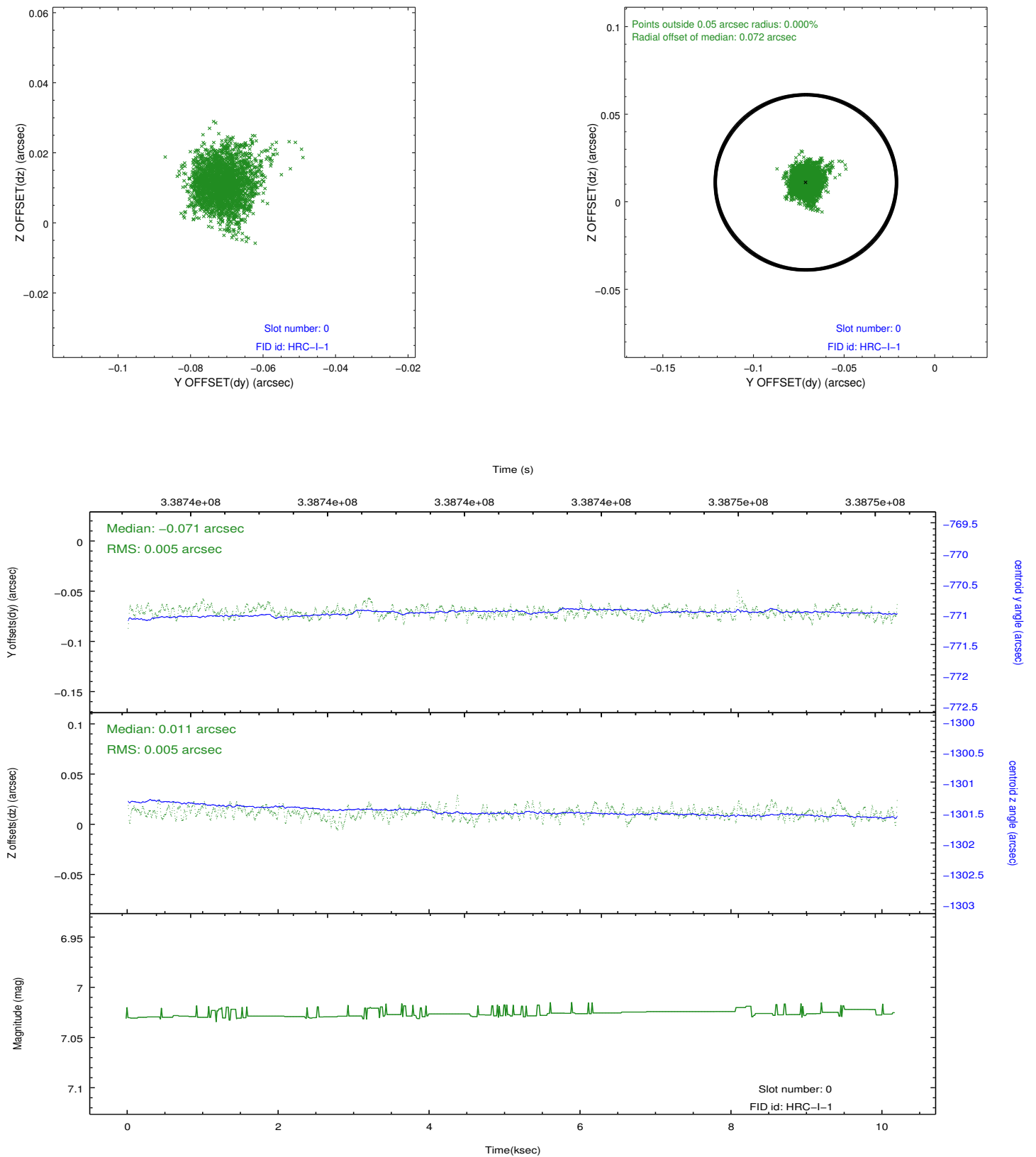


## 2.4.5 Slot 7

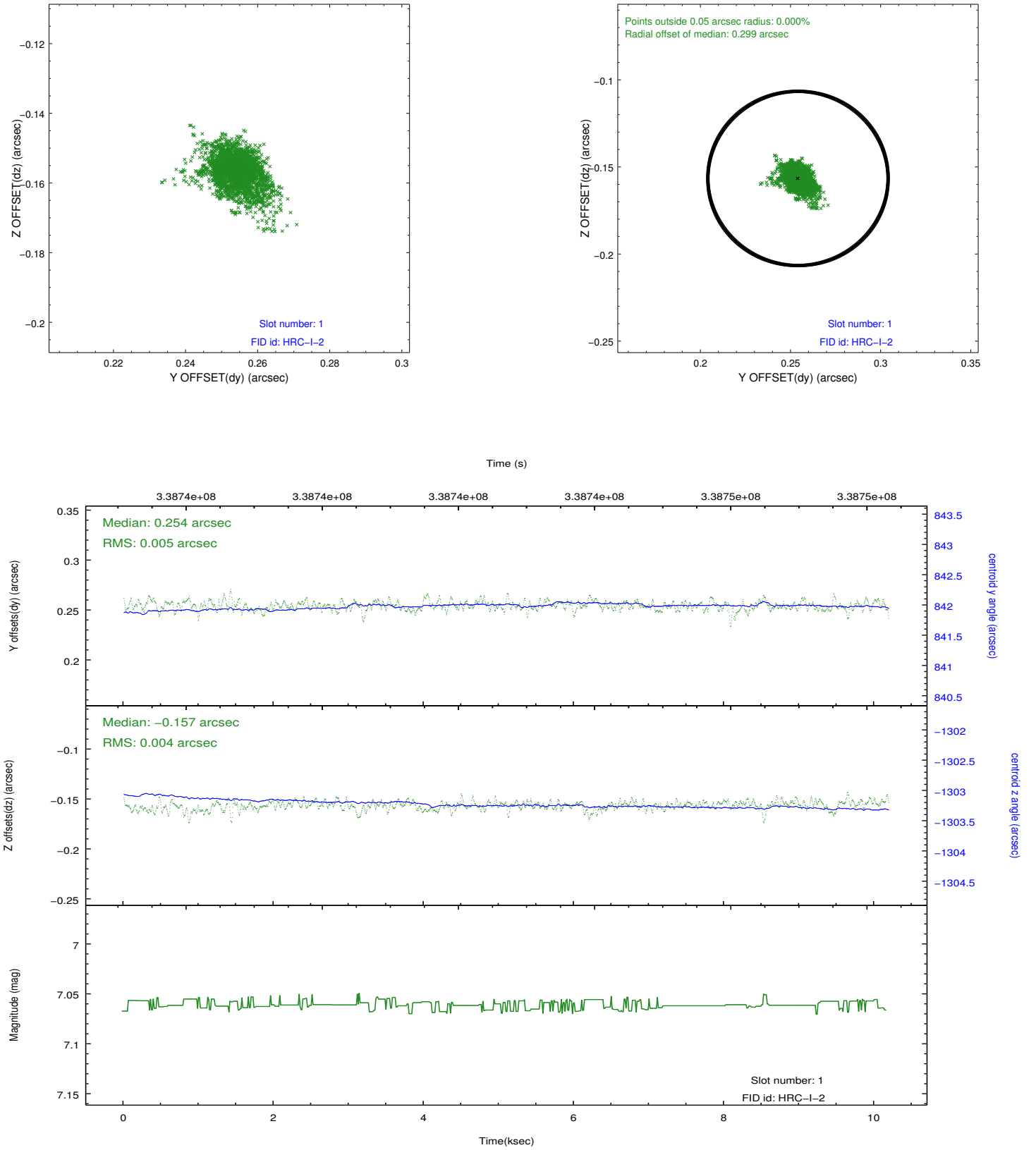


## 2.5 FID Slots

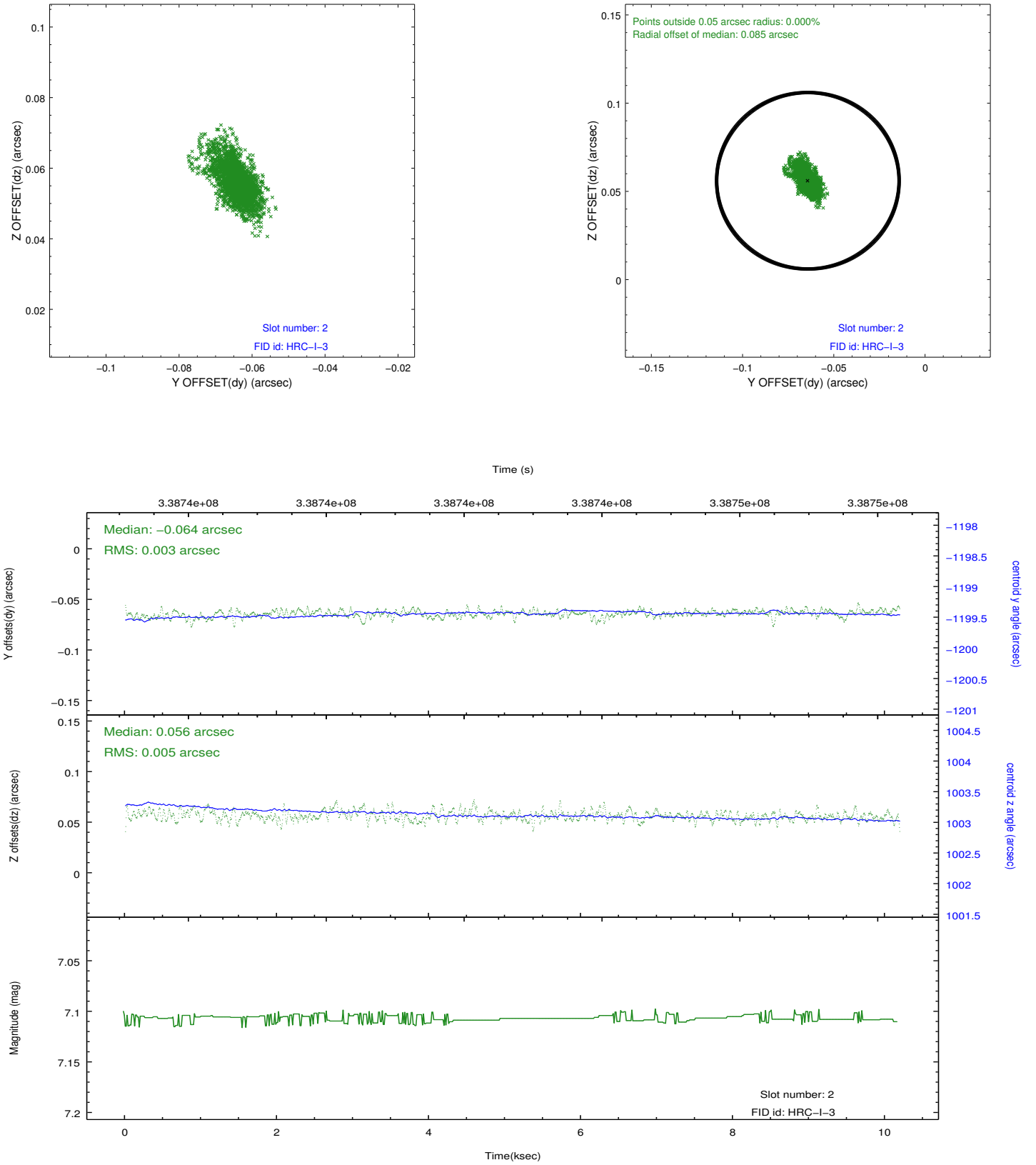
### 2.5.1 Slot 0



## 2.5.2 Slot 1



### 2.5.3 Slot 2



## A Summary

### A.1 Status

V&V Scientist	Jen Lauer
V&V Date (YYYY-MM-DD)	2012.08.20
V&V Edition	1
V&V Disposition and Status	OK
V&V Charge Time	10.1885004

### A.2 Comments