

V&V Reference Report

L2 ASCDS Version : 8.4.4

Observation 9120 - L2 Version 2
Chandra X-Ray Center

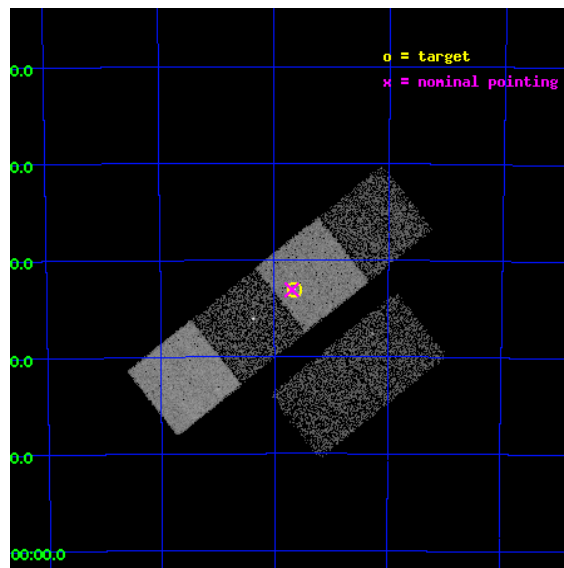
L2 Processing Date : May 6 2012

Contents

1	Front	2
2	OBI	3
2.1	OBI	3
2.1.1	Images	3
2.1.2	Bias	3
2.1.3	Parameters	4
2.1.4	Events	4
2.2	Compared Parameters	5
2.3	Aspect	6
2.4	Star Slots	9
2.4.1	Slot 3	9
2.4.2	Slot 4	10
2.4.3	Slot 5	11
2.4.4	Slot 6	12
2.4.5	Slot 7	13
2.5	FID Slots	14
2.5.1	Slot 0	14
2.5.2	Slot 1	15
2.5.3	Slot 2	16
A	Summary	17
A.1	Status	17
A.2	Comments	17

1 Front

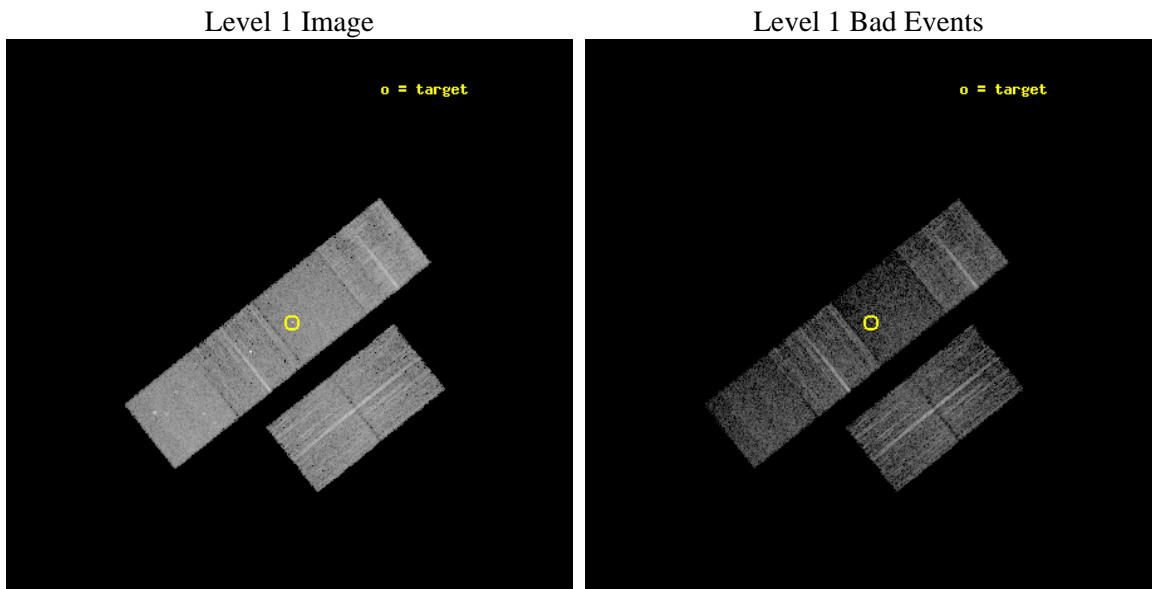
seq_num	500982	Sequence number
obs_id	9120	Observation id
title	The Peculiar X-Ray Evolution of Supernovae 1978K, 1979C and 1993J	
observer	Dr Stefan Immler	Principal investigator
object	SN1978K	Source name
dtcycle	0	
cycle	P	events from which exps? Prim/Second/Both
ra_targ	49.410833	Observer's specified target RA [deg]
dec_targ	-66.550944	Observer's specified target Dec [deg]
ra_nom	49.422935817367	Nominal RA [deg]
dec_nom	-66.551517769927	Nominal Dec [deg]
roll_nom	321.36269654545	Nominal Roll [deg]
revision	2	Processing version of data
ontime	5125.8348876238	Sum of GTIs [s]
livetime	5060.9284798695	Livetime [s]
ontime2	5125.8759276271	Sum of GTIs [s]
ontime3	5122.4707973003	Sum of GTIs [s]
ontime5	5125.7938476205	Sum of GTIs [s]
ontime6	5125.7528076172	Sum of GTIs [s]
ontime7	5125.8348876238	Sum of GTIs [s]
ontime8	5125.6707276106	Sum of GTIs [s]
l2events	55989	Number of level 2 events



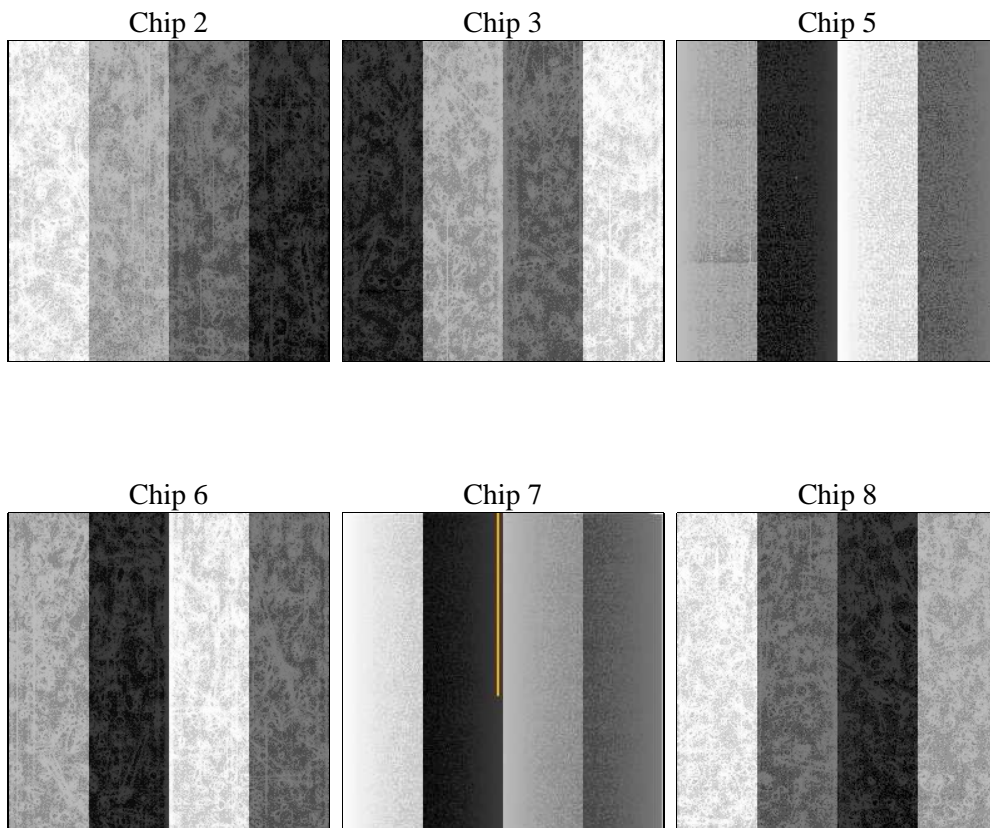
2 OBI

2.1 OBI

2.1.1 Images



2.1.2 Bias



2.1.3 Parameters

obi_num	0	Obi number	sched_exp_time	5000.000000	[s] Scheduled observation exposure time
ascdsver	8.4.4	Processing system revision	ontime	5125.8348876238	Sum of GTIs [s]
caldsver	4.4.9	 	ontime2	5125.8759276271	Sum of GTIs [s]
date	2012-05-06T14:21:44	Date and time of file creation	ontime3	5122.4707973003	Sum of GTIs [s]
revision	2	Processing version of data	ontime5	5125.7938476205	Sum of GTIs [s]
			ontime6	5125.7528076172	Sum of GTIs [s]
			ontime7	5125.8348876238	Sum of GTIs [s]
			ontime8	5125.6707276106	Sum of GTIs [s]
			l1events	252493	Number of level 1 events

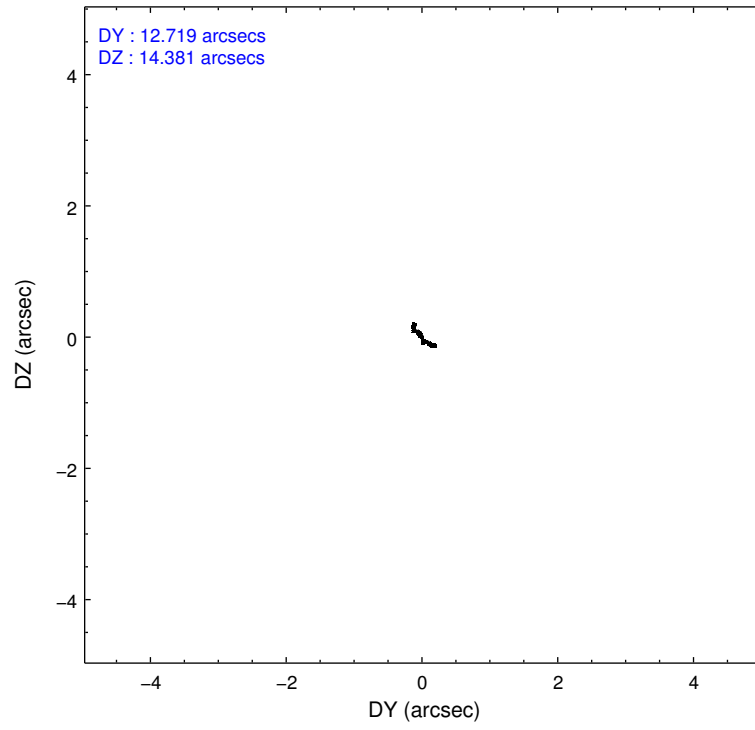
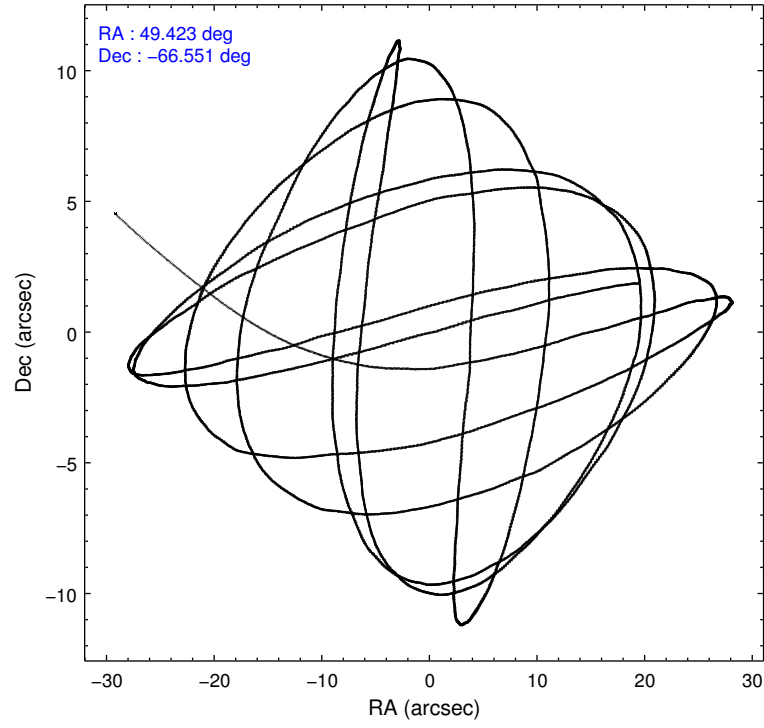
2.1.4 Events

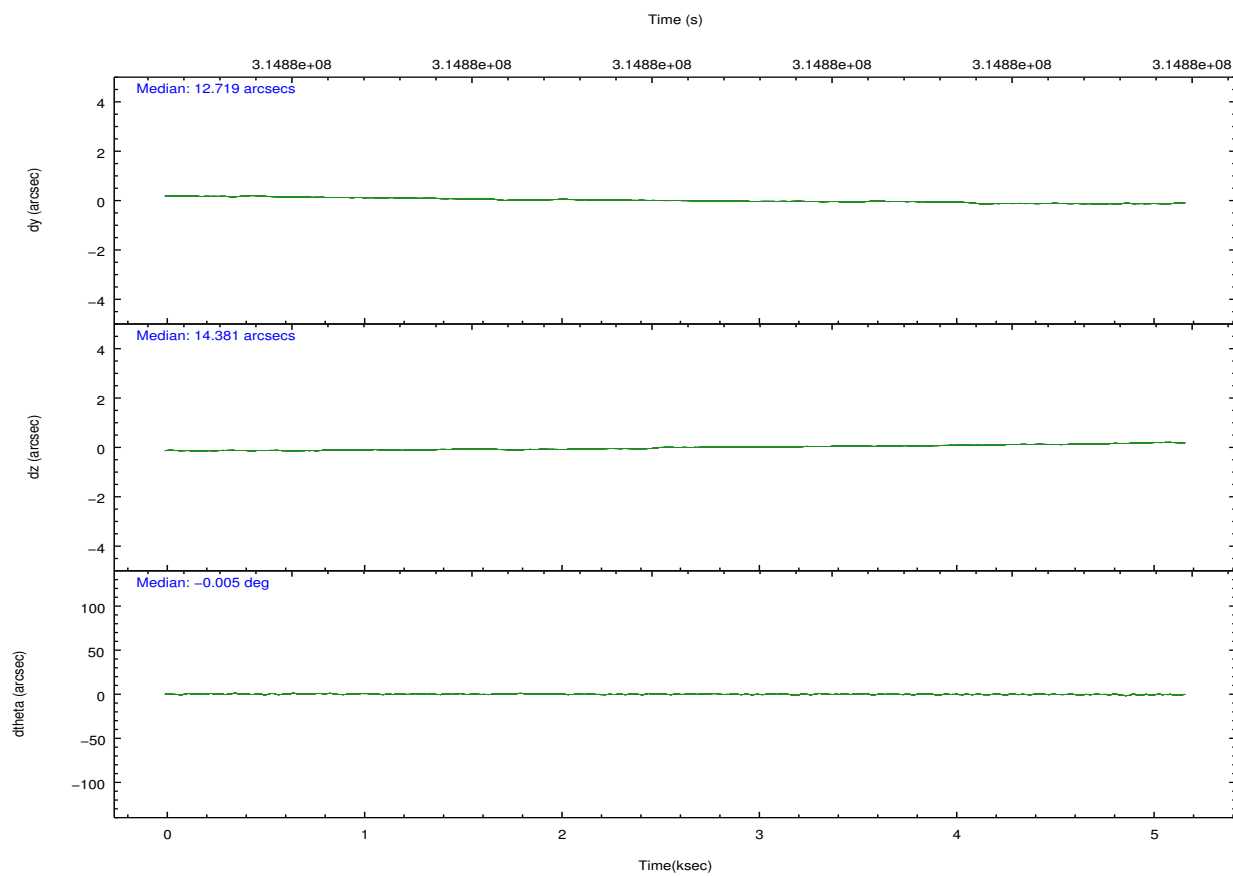
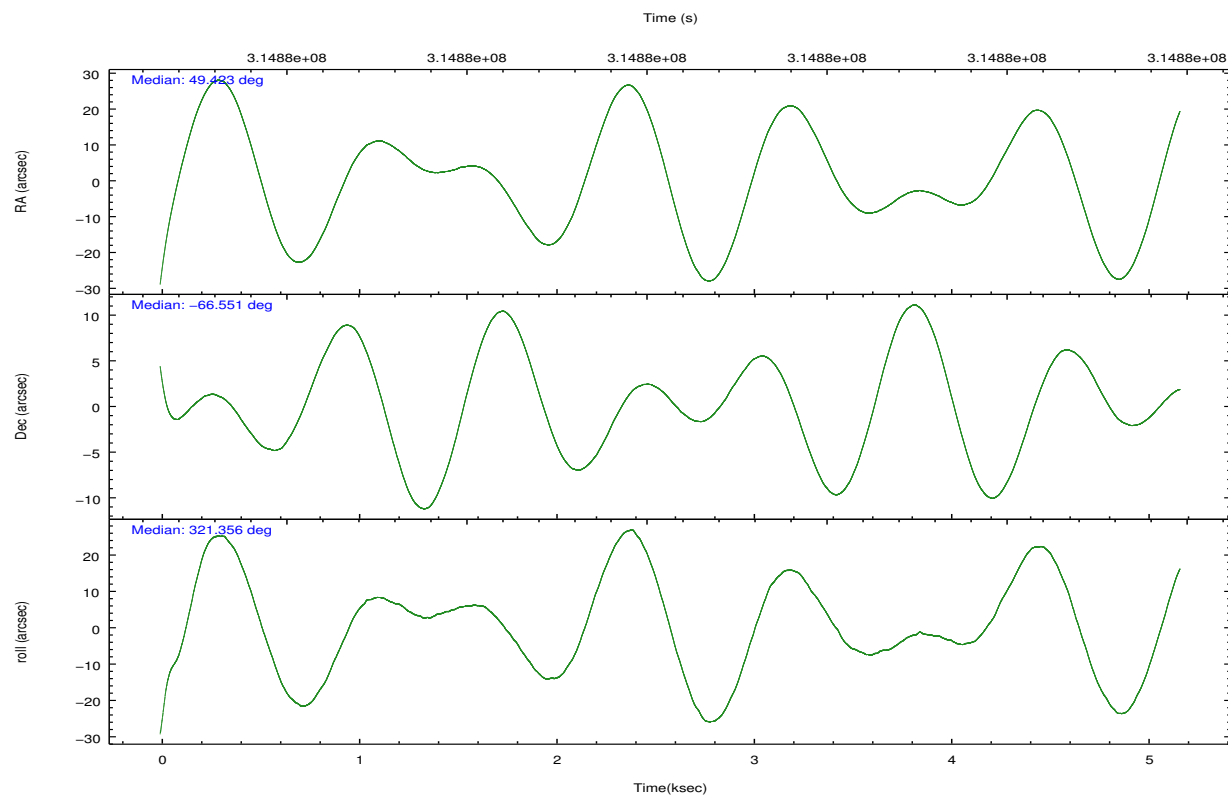
	ccd 2	ccd 3	ccd 5	ccd 6	ccd 7	ccd 8		ccd 2	ccd 3	ccd 5	ccd 6	ccd 7	ccd 8
level 1 events	43415	36736	47919	39498	37915	47010	grade 0 events	1360	1320	2326	1989	1970	3174
rejected events	39686	33277	22635	34920	19083	35548		3%	3%	4%	5%	5%	6%
rejected %	91%	90%	47%	88%	50%	75%	grade 1 events	22	20	118	16	76	29
								0%	0%	0%	0%	0%	0%
							grade 2 events	913	730	7672	905	4160	2789
								2%	1%	16%	2%	10%	5%
							grade 3 events	393	414	1118	458	1791	1265
								0%	1%	2%	1%	4%	2%
							grade 4 events	389	360	1062	465	1757	1183
								0%	0%	2%	1%	4%	2%
							grade 5 events	1151	1248	3807	1337	4031	1937
								2%	3%	7%	3%	10%	4%
							grade 6 events	675	638	13118	763	9164	3053
								1%	1%	27%	1%	24%	6%
							grade 7 events	38512	32006	18698	33565	14966	33580
								88%	87%	39%	84%	39%	71%

2.2 Compared Parameters

Parameter	Planned	Actual	Parameter	Planned	Actual
Instrument	ACIS	ACIS	Obspar format version number	7	7
Detector	ACIS-235678	ACIS-235678	Obspar file type	PREDICTED	ACTUAL
Grating	NONE	NONE	Obspar update status	NONE	UPDATED
Data mode	VFAINT	VFAINT	CCD I0 on	N	N
Observation mode	POINTING	POINTING	CCD I1 on	N	N
[deg] Pointing RA	49.354866	49.42293581736675	CCD I2 on	O1	Y
[deg] Pointing Dec	-66.547778	-66.55151776992713	CCD I3 on	O2	Y
[deg] Pointing Roll	321.143616	321.3626965454516	CCD S0 on	N	N
[mm] SIM focus pos	-0.684267	-0.6828225247311905	CCD S1 on	Y	Y
[mm] SIM defocus	0	0.001444936568705701	CCD S2 on	Y	Y
[mm] SIM translation stage pos	-190.132523	-190.1400660498719	CCD S3 on	Y	Y
[mm] SIM translation stage offset	0	0.00754346686406393	CCD S4 on	Y	Y
[s] Observation start time (MET)	314875710.184000	314874662.44604	CCD S5 on	N	N
Observation start date	2007-12-24T09:27:25	2007-12-24T09:11:02	Number of optional ACIS chips dropped	0	0
[s] Observation end time (MET)	314880710.184000	314881255.24635	On-chip summing requested	N	N
Observation end date	2007-12-24T10:50:45	2007-12-24T11:00:55	Subarray requested	NONE	NONE
Read mode	TIMED	TIMED	Alternating exposures requested	N	N
			[s] Primary exposure time	0.000000	3.2

2.3 Aspect



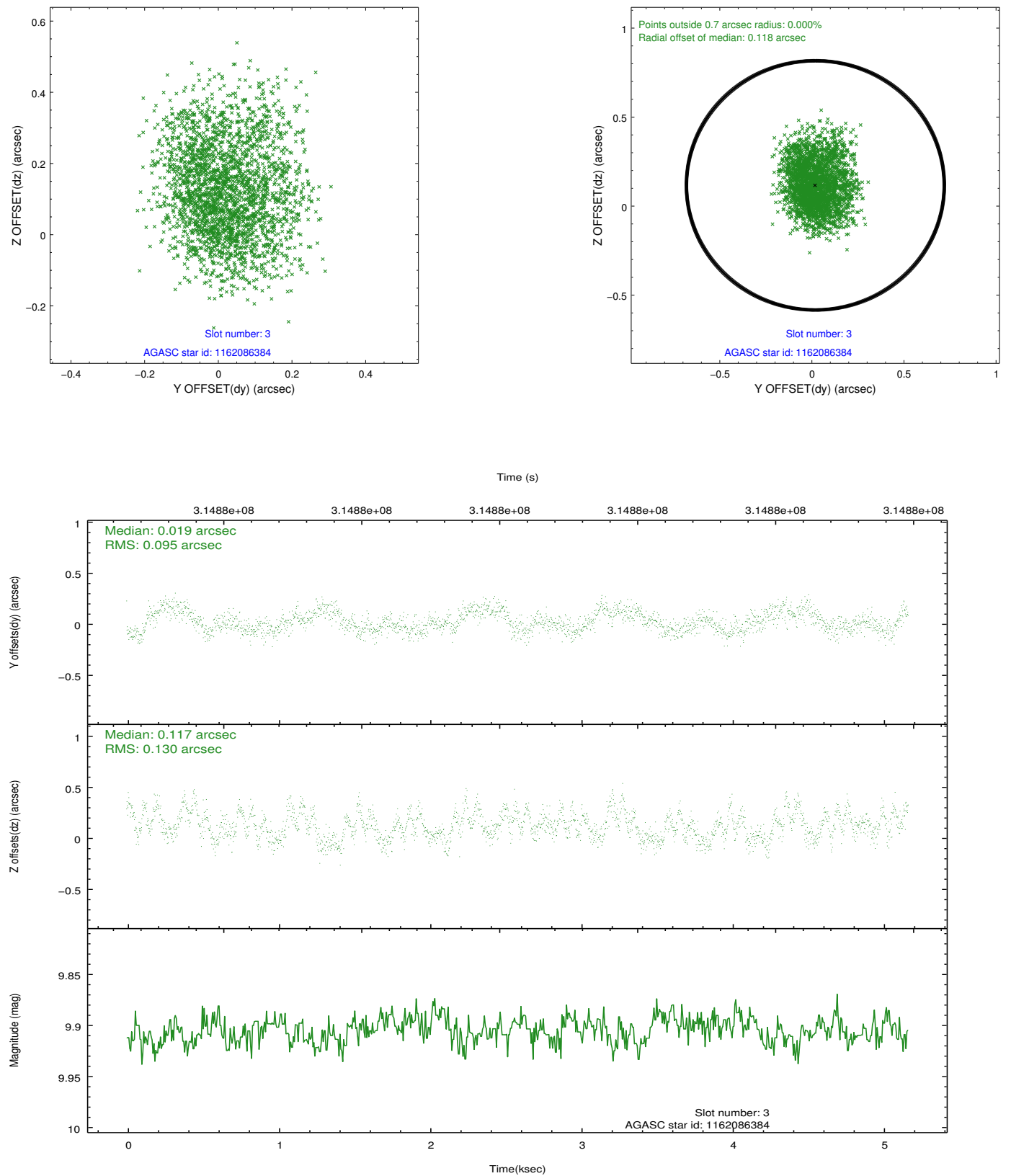


Slot Statistics

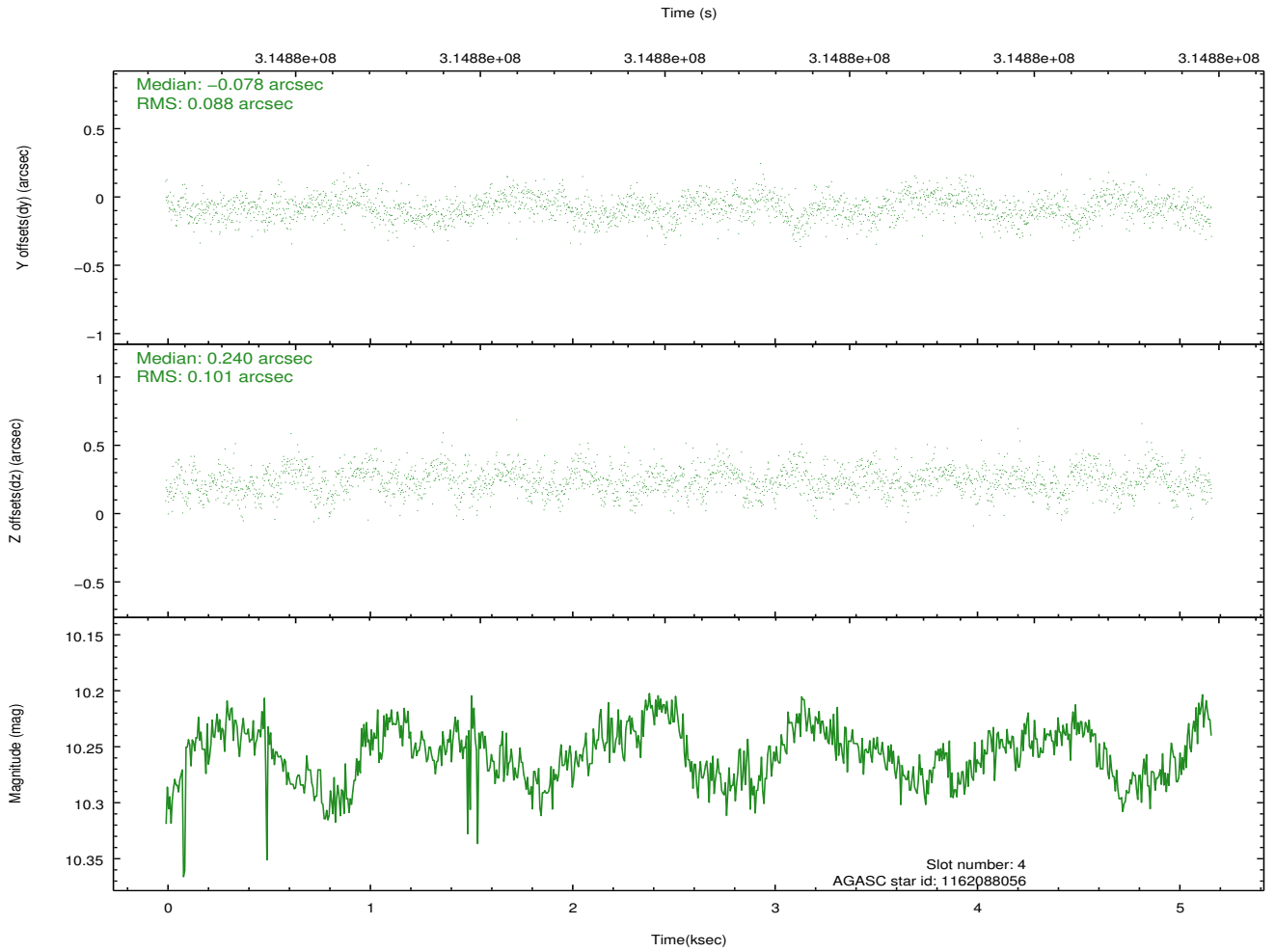
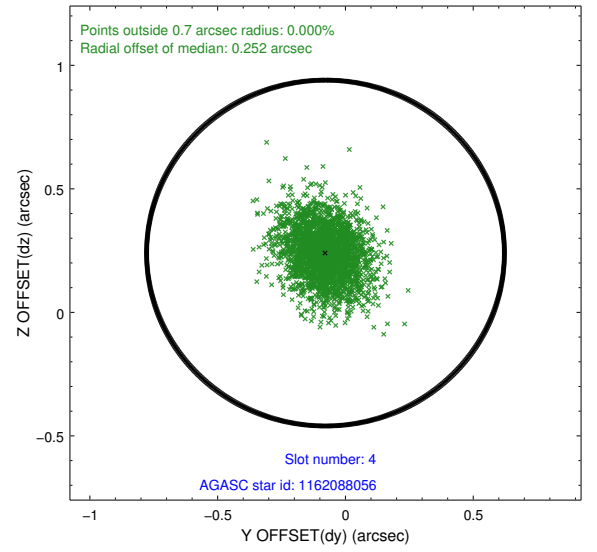
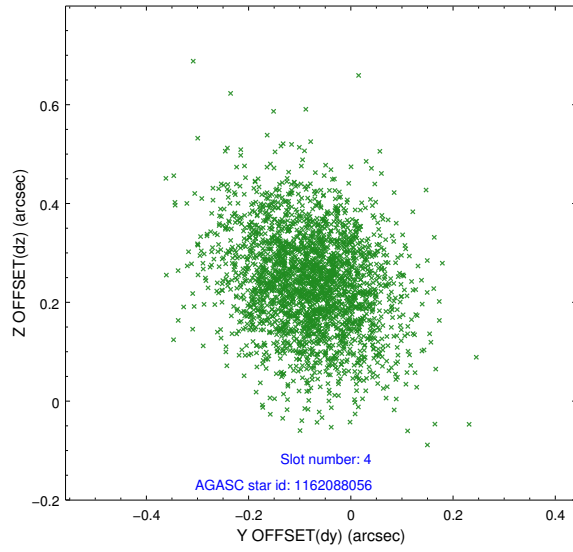
slot	status	id	mag	n_pts	med_dy	med_dz	dr1	dr2	ra	dec	mean_y	mean_z
0	FID	ACIS-S-2	7.09	1261	-0.047	-0.041	0.007	0.011	0.000000	0.000000	-765.66	-1735.79
1	FID	ACIS-S-4	7.19	1261	0.159	0.034	0.006	0.012	0.000000	0.000000	2147.26	171.59
2	FID	ACIS-S-5	7.22	1259	-0.142	0.016	0.009	0.014	0.000000	0.000000	-1817.12	166.53
3	GUIDE	1162086384	9.90	2520	0.019	0.117	0.174	0.269	48.033301	-66.858172	-741.72	-2058.17
4	GUIDE	1162088056	10.26	2517	-0.078	0.240	0.139	0.235	48.729349	-66.949806	224.46	-1684.02
5	GUIDE	1162088248	7.59	2522	0.143	-0.535	0.086	0.132	49.751966	-65.888113	-1033.56	2213.10
6	GUIDE	1162089104	9.59	2517	-0.095	0.088	0.111	0.171	48.422126	-66.410699	-1349.68	-465.56
7	GUIDE	1162094224	9.69	2519	0.002	0.082	0.106	0.176	49.638584	-66.701903	663.19	-179.22

2.4 Star Slots

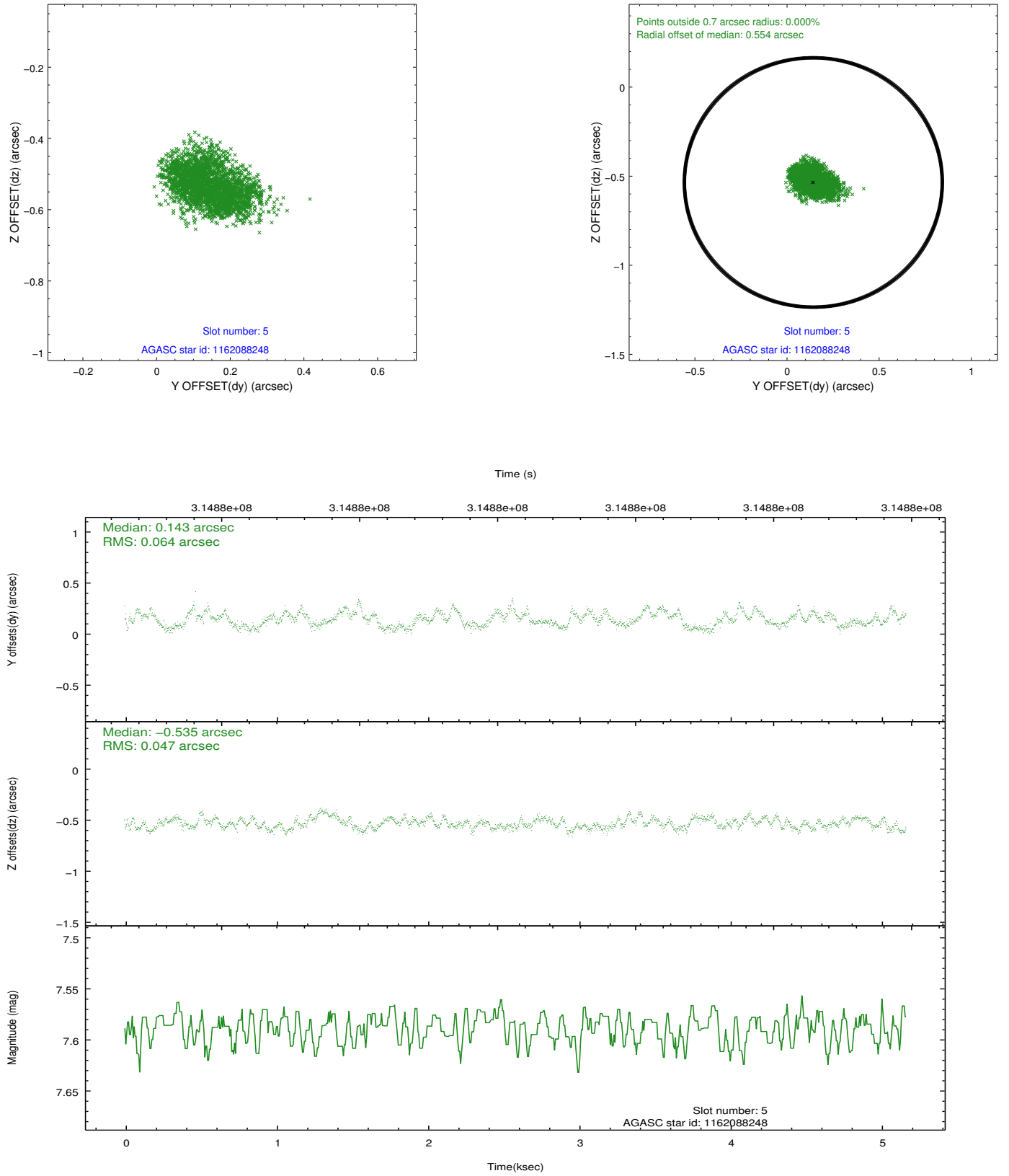
2.4.1 Slot 3



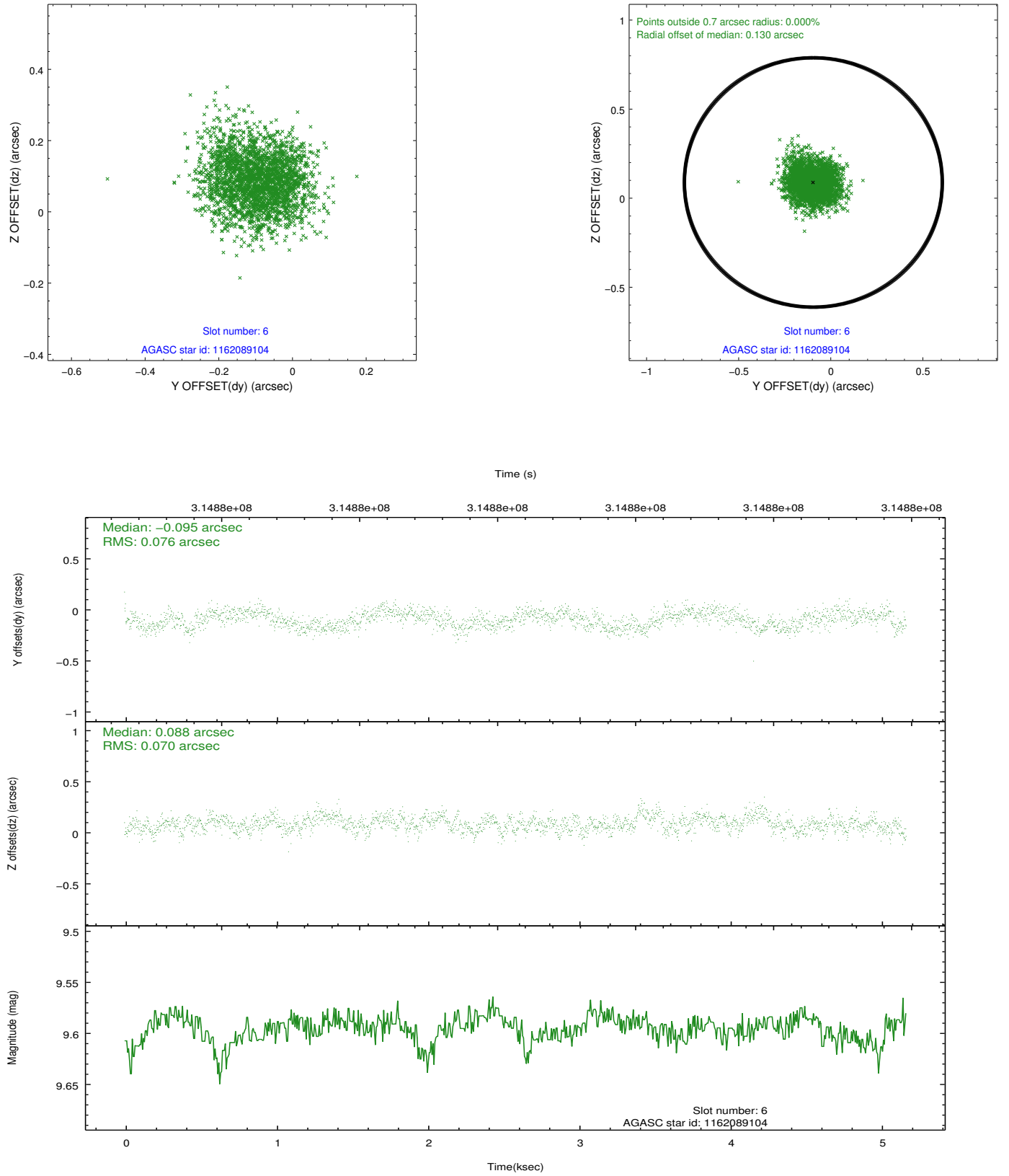
2.4.2 Slot 4



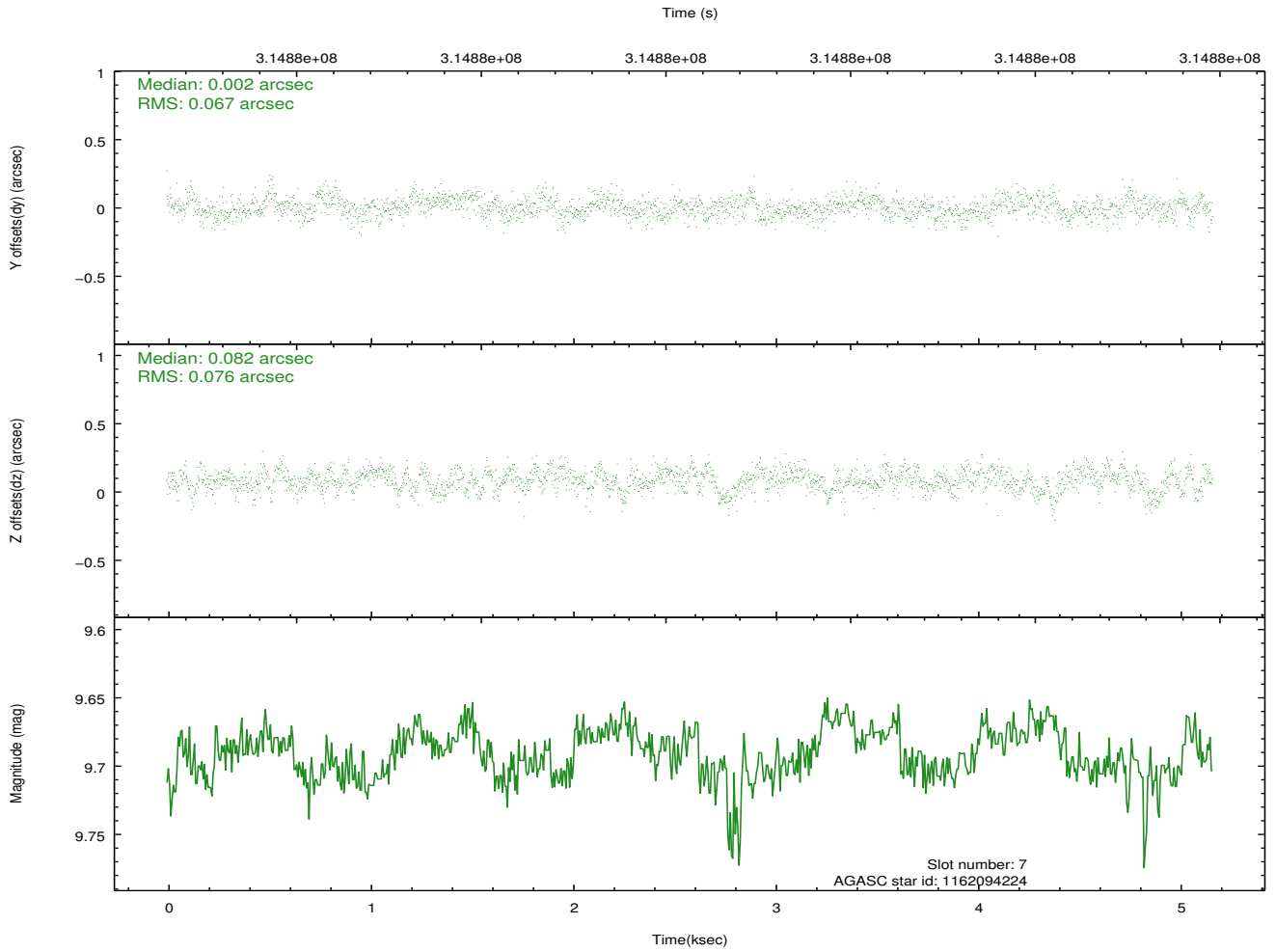
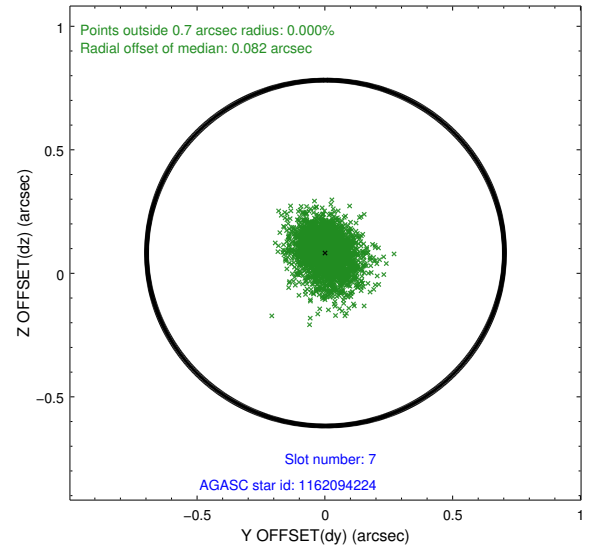
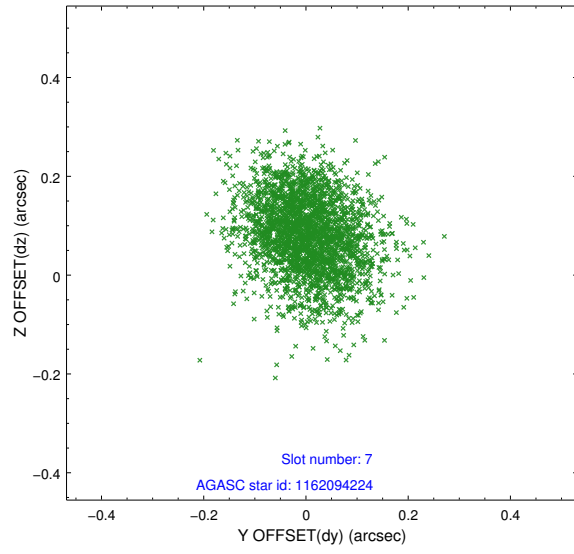
2.4.3 Slot 5



2.4.4 Slot 6

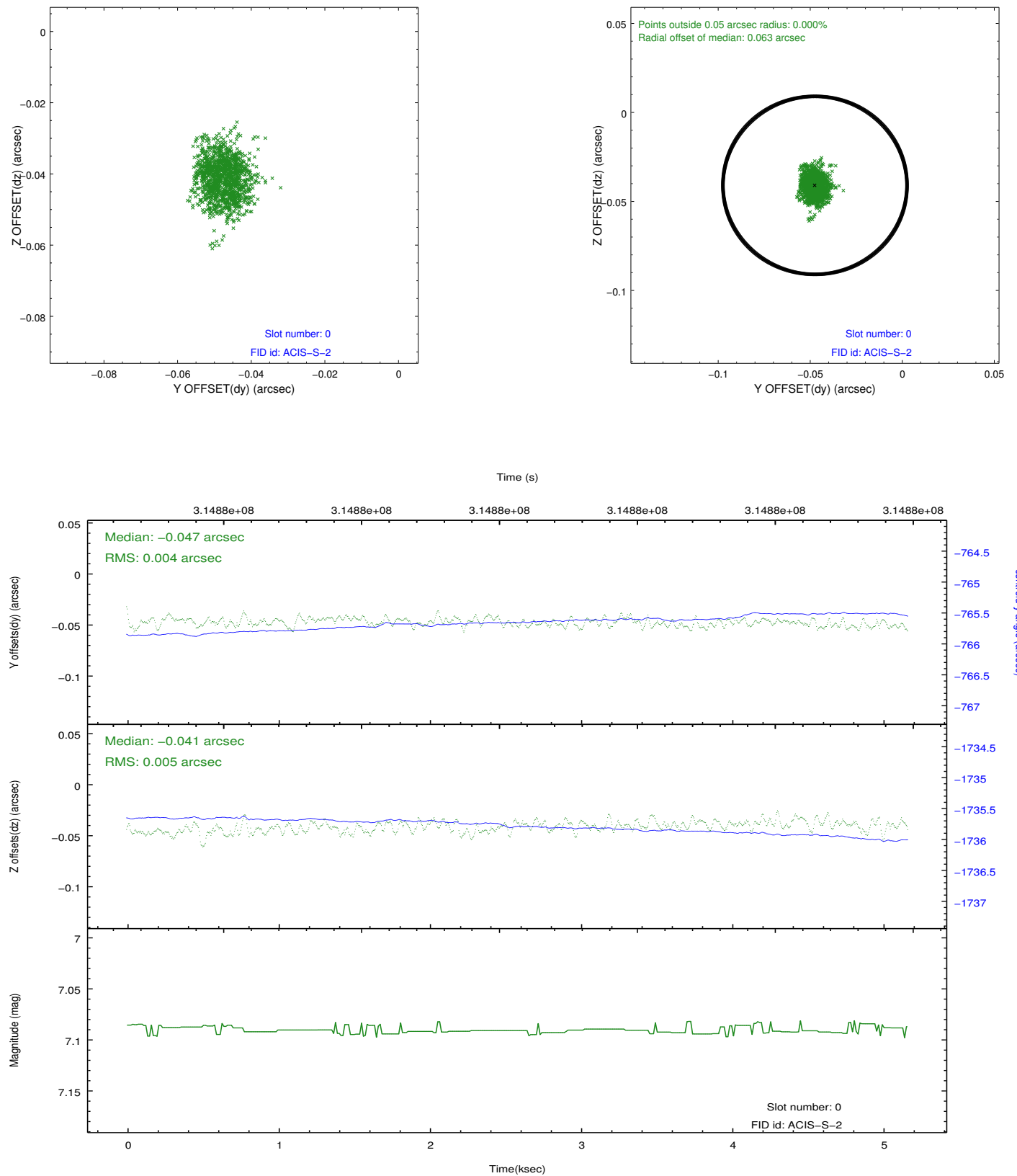


2.4.5 Slot 7

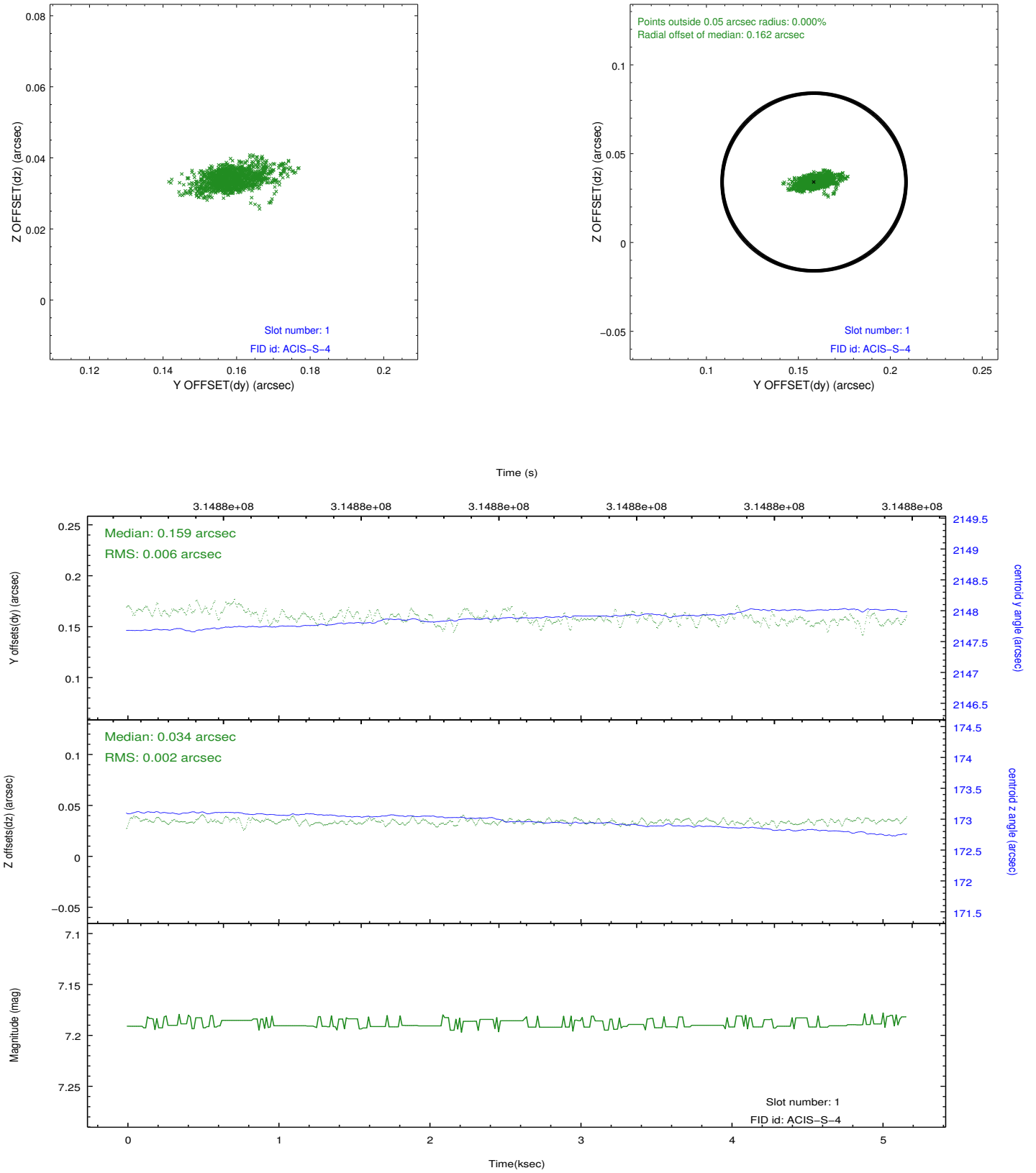


2.5 FID Slots

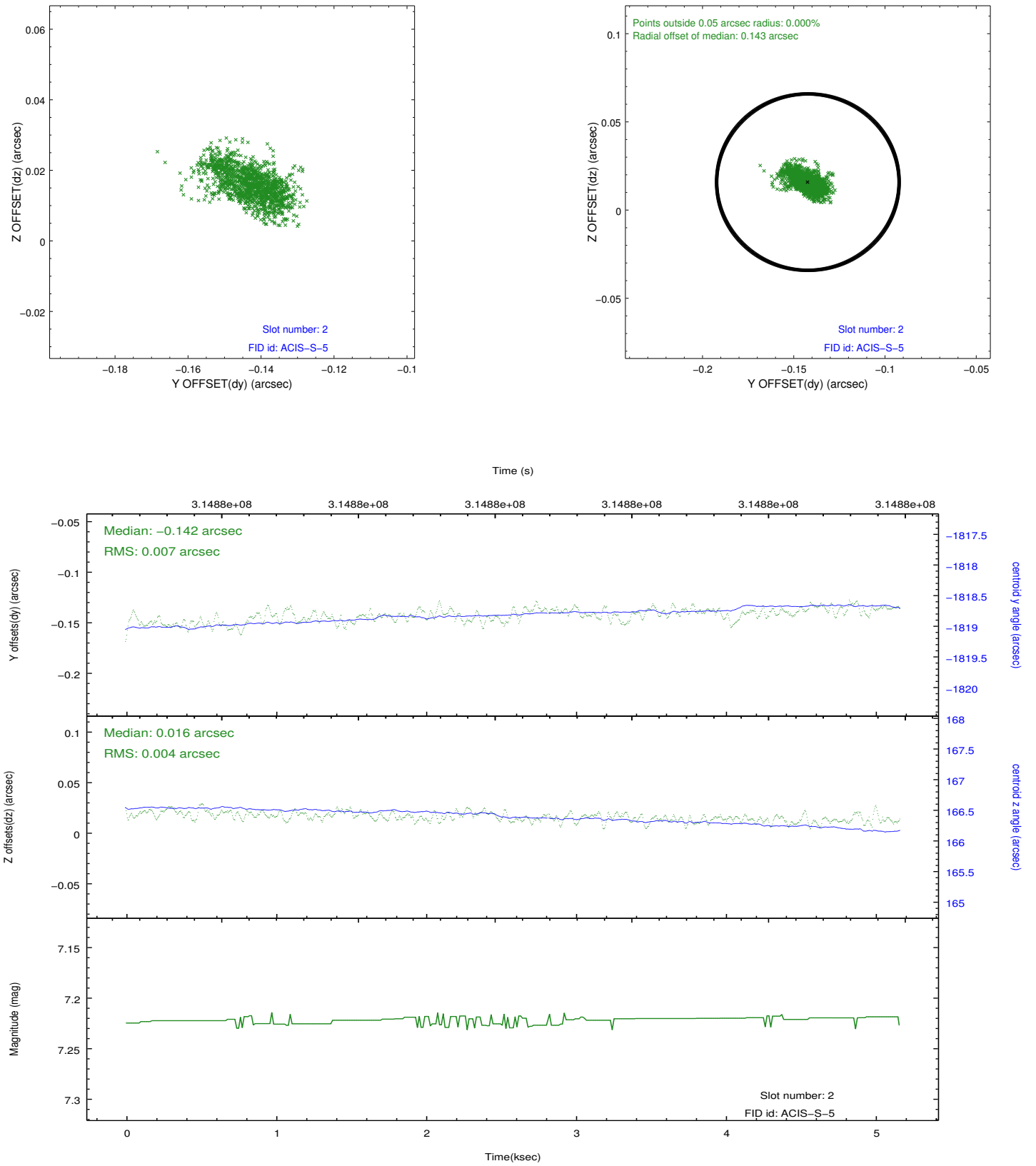
2.5.1 Slot 0



2.5.2 Slot 1



2.5.3 Slot 2



A Summary

A.1 Status

V&V Scientist	Beth Sundheim
V&V Date (YYYY-MM-DD)	2012.05.08
V&V Edition	1
V&V Disposition and Status	OK
V&V Charge Time	5.12639998

A.2 Comments