

V&V Reference Report

L2 ASCDS Version : 8.4.4

Observation 8813 - L2 Version 2
Chandra X-Ray Center

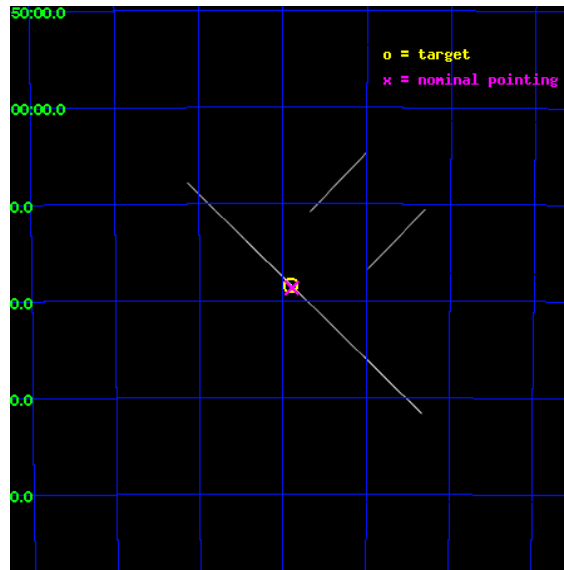
L2 Processing Date : May 22 2012

Contents

1	Front	2
2	OBI	3
2.1	OBI	3
2.1.1	Images	3
2.1.2	Bias	3
2.1.3	Parameters	4
2.1.4	Events	4
2.2	Compared Parameters	5
2.3	Aspect	6
2.4	Star Slots	9
2.4.1	Slot 3	9
2.4.2	Slot 4	10
2.4.3	Slot 5	11
2.4.4	Slot 6	12
2.4.5	Slot 7	13
2.5	FID Slots	14
2.5.1	Slot 0	14
2.5.2	Slot 1	15
2.5.3	Slot 2	16
A	Summary	17
A.1	Status	17
A.2	Comments	17

1 Front

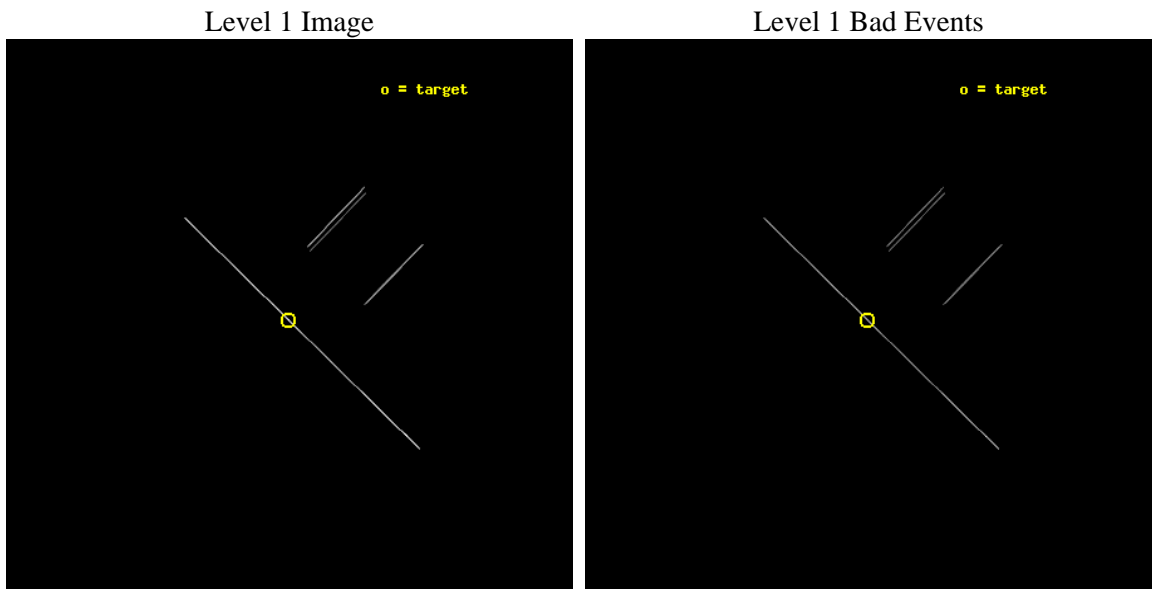
seq_num	500862	Sequence number
obs_id	8813	Observation id
title	TINY HICCUPS TO TITANIC EXPLOSIONS: Tackling Transients in Anomalous X-ray Pulsars	Proposal title
observer	Professor Victoria Kaspi	Principal investigator
object	1E 1547.0-5408	Source name
ra_targ	237.725417	Observer's specified target RA [deg]
dec_targ	-54.306583	Observer's specified target Dec [deg]
ra_nom	237.72330247401	Nominal RA [deg]
dec_nom	-54.311269883193	Nominal Dec [deg]
roll_nom	224.15489351824	Nominal Roll [deg]
revision	2	Processing version of data
ontime	10158.25	Sum of GTIs [s]
livetime	10118.569335938	Livetime [s]
ontime2	10158.25	Sum of GTIs [s]
ontime3	10158.25	Sum of GTIs [s]
ontime5	10158.25	Sum of GTIs [s]
ontime6	10158.25	Sum of GTIs [s]
ontime7	10158.25	Sum of GTIs [s]
ontime8	10158.25	Sum of GTIs [s]
l2events	203198	Number of level 2 events



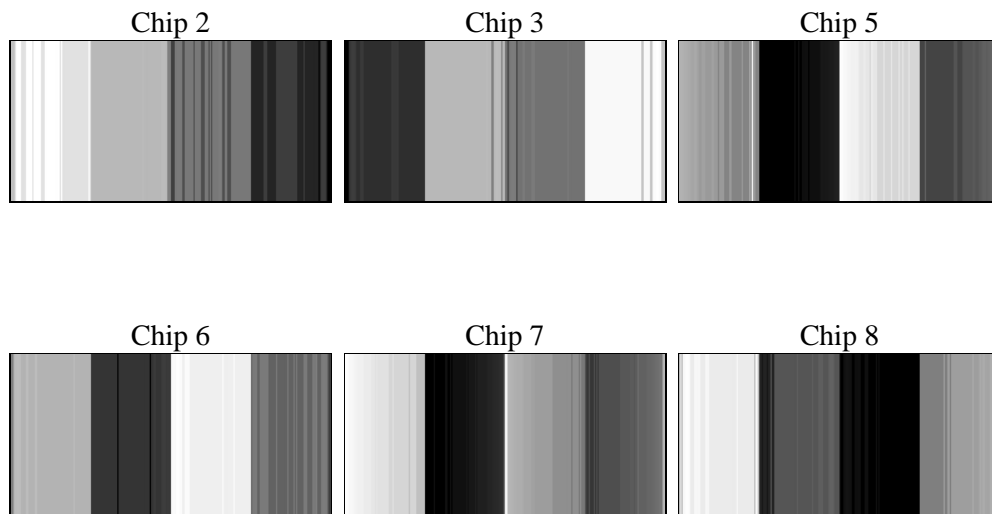
2 OBI

2.1 OBI

2.1.1 Images



2.1.2 Bias



2.1.3 Parameters

obi_num	0	Obi number	sched_exp_time	10000.000000	[s] Scheduled observation exposure time
ascdsver	8.4.4	Processing system revision	ontime	10158.25	Sum of GTIs [s]
caldsver	4.4.9	 	ontime2	10158.25	Sum of GTIs [s]
date	2012-05-22T22:05:36	Date and time of file creation	ontime3	10158.25	Sum of GTIs [s]
revision	2	Processing version of data	ontime5	10158.25	Sum of GTIs [s]
			ontime6	10158.25	Sum of GTIs [s]
			ontime7	10158.25	Sum of GTIs [s]
			ontime8	10158.25	Sum of GTIs [s]
			l1events	333345	Number of level 1 events

2.1.4 Events

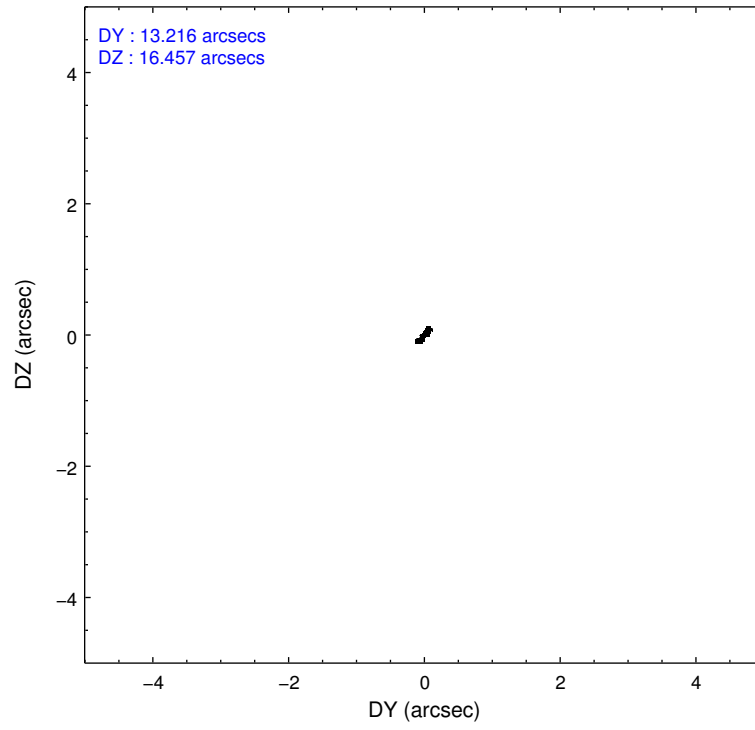
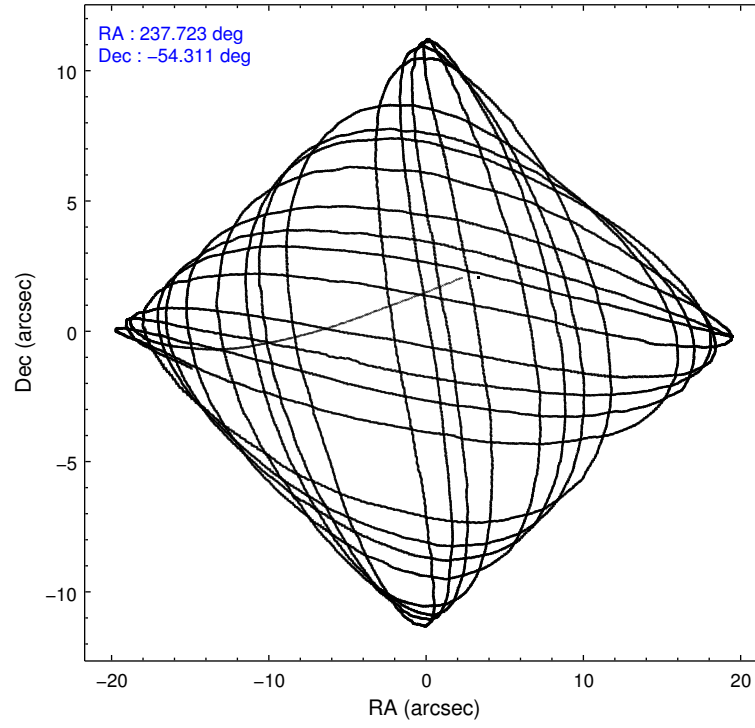
	ccd 2	ccd 3	ccd 5	ccd 6	ccd 7	ccd 8
level 1 events	23422	25618	112510	25620	92664	53511
rejected events	6658	7153	21696	7486	19807	12476
rejected %	28%	27%	19%	29%	21%	23%

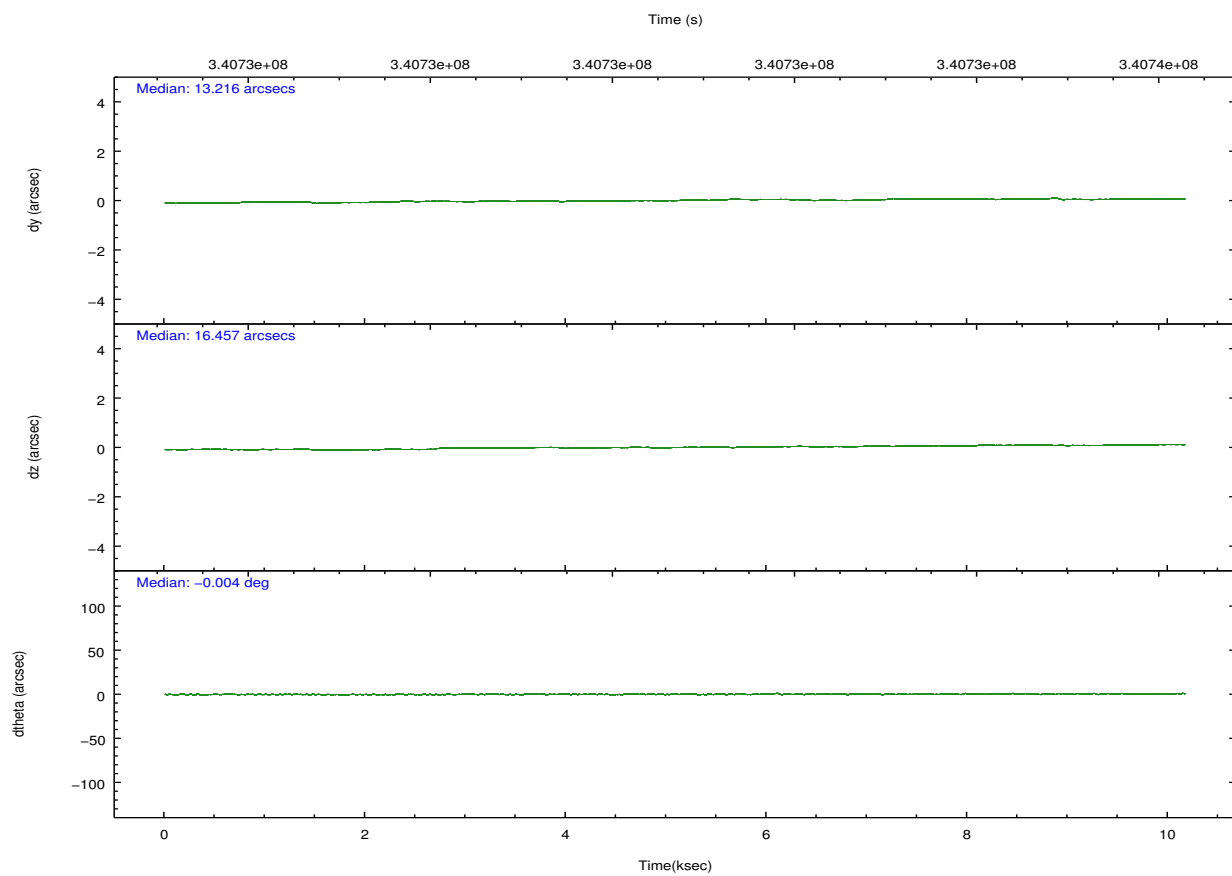
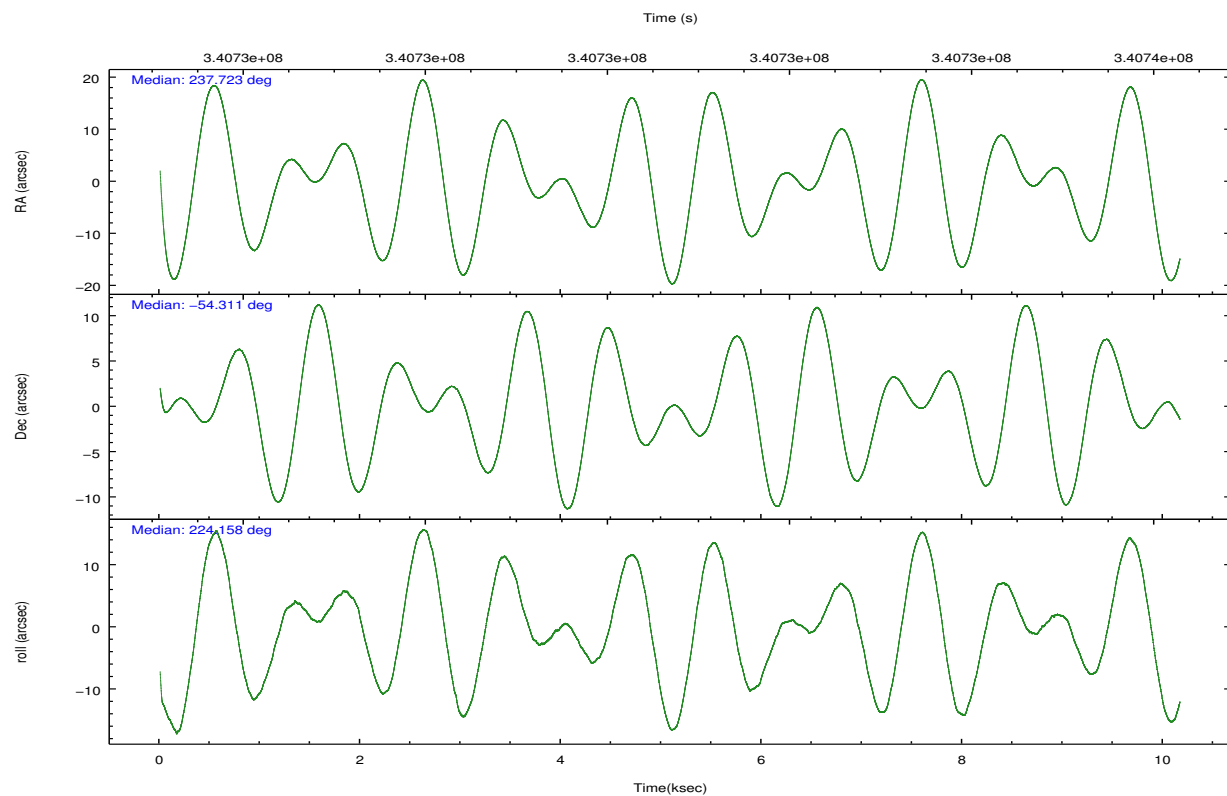
	ccd 2	ccd 3	ccd 5	ccd 6	ccd 7	ccd 8
grade 0 events	2932	2875	21226	2402	7976	9508
	12%	11%	18%	9%	8%	17%
grade 1 events	97	100	157	90	188	210
	0%	0%	0%	0%	0%	0%
grade 2 events	7388	8030	29827	8161	21008	14525
	31%	31%	26%	31%	22%	27%
grade 3 events	2263	2782	2014	2422	5678	5082
	9%	10%	1%	9%	6%	9%
grade 4 events	2240	2272	1881	2338	5498	4838
	9%	8%	1%	9%	5%	9%
grade 5 events	4527	4955	10512	5206	12623	7232
	19%	19%	9%	20%	13%	13%
grade 6 events	3975	4604	46893	5001	39693	12116
	16%	17%	41%	19%	42%	22%
grade 7 events	0	0	0	0	0	0
	0%	0%	0%	0%	0%	0%

2.2 Compared Parameters

Parameter	Planned	Actual	Parameter	Planned	Actual
Instrument	ACIS	ACIS	Obspar format version number	7	7
Detector	ACIS-235678	ACIS-235678	Obspar file type	PREDICTED	ACTUAL
Grating	NONE	NONE	Obspar update status	NONE	UPDATED
Data mode	CC33_FAINT	CC33_FAINT	CCD I0 on	N	N
Observation mode	POINTING	POINTING	CCD I1 on	N	N
[deg] Pointing RA	237.735563	237.7233024740077	CCD I2 on	O2	Y
[deg] Pointing Dec	-54.284880	-54.31126988319339	CCD I3 on	O3	Y
[deg] Pointing Roll	224.008236	224.1548935182429	CCD S0 on	N	N
[mm] SIM focus pos	-0.684267	-0.6828225247311905	CCD S1 on	O1	Y
[mm] SIM defocus	0	0.001444936568705701	CCD S2 on	Y	Y
[mm] SIM translation stage pos	-190.132523	-190.1425803651734	CCD S3 on	Y	Y
[mm] SIM translation stage offset	0	0.01005778216563158	CCD S4 on	Y	Y
[s] Observation start time (MET)	340725776.184000	340724396.78014	CCD S5 on	N	N
Observation start date	2008-10-18T14:01:51	2008-10-18T13:39:56	Number of optional ACIS chips dropped	0	0
[s] Observation end time (MET)	340735776.184000	340736790.05575	On-chip summing requested	N	N
Observation end date	2008-10-18T16:48:31	2008-10-18T17:06:30	Subarray requested	NONE	NONE
Read mode	CONTINUOUS	CONTINUOUS	Alternating exposures requested	N	N
			[s] Primary exposure time	0.000000	0

2.3 Aspect



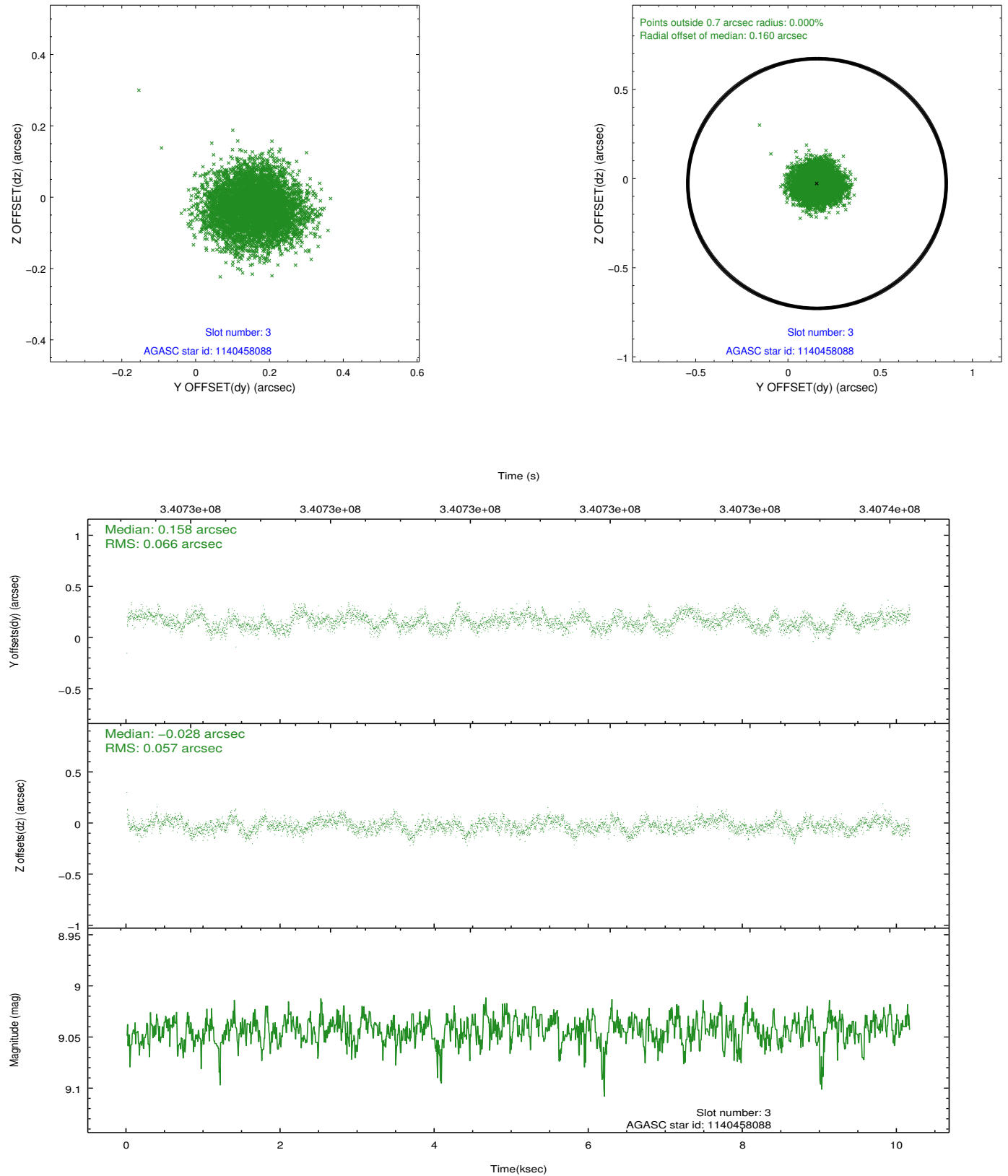


Slot Statistics

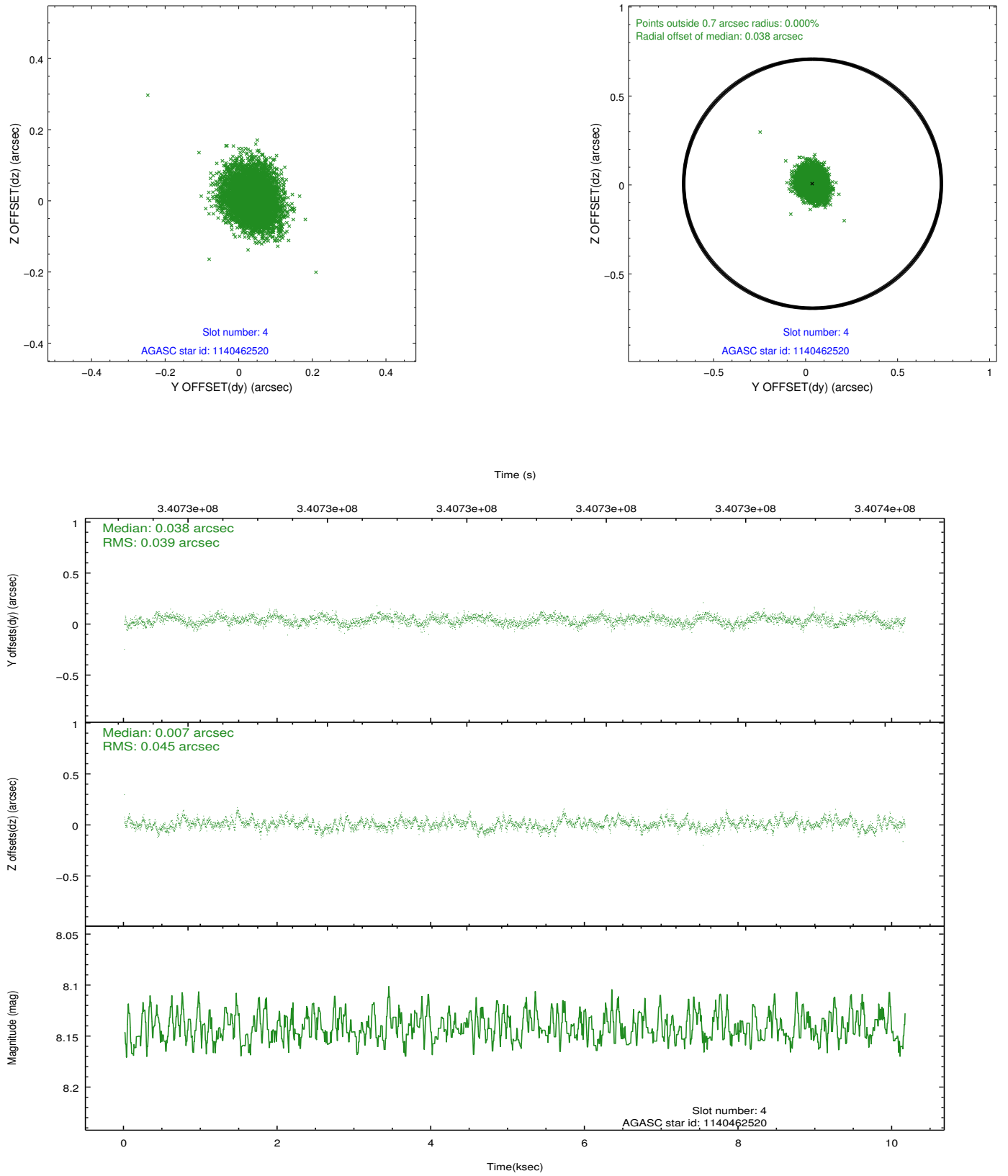
slot	status	id	mag	n_pts	med_dy	med_dz	dr1	dr2	ra	dec	mean_y	mean_z
0	FID	ACIS-S-2	6.88	2479	-0.025	-0.000	0.007	0.011	0.000000	0.000000	-766.16	-1737.82
1	FID	ACIS-S-4	6.96	2479	0.134	0.012	0.006	0.011	0.000000	0.000000	2147.04	170.13
2	FID	ACIS-S-5	6.99	2480	-0.141	-0.003	0.007	0.013	0.000000	0.000000	-1818.45	164.38
3	GUIDE	1140458088	9.04	4952	0.158	-0.028	0.095	0.145	237.318795	-54.593632	1399.45	197.53
4	GUIDE	1140462520	8.14	4958	0.038	0.007	0.063	0.103	237.718666	-54.642458	920.10	901.69
5	GUIDE	1139945912	9.14	4956	0.024	0.054	0.086	0.140	238.361289	-54.201826	-1151.06	705.17
6	GUIDE	1139941688	9.14	4958	-0.037	-0.066	0.093	0.147	238.371800	-54.158507	-1276.17	609.65
7	GUIDE	1139943608	9.20	4947	-0.180	0.039	0.108	0.173	238.761095	-54.002426	-2256.53	788.12

2.4 Star Slots

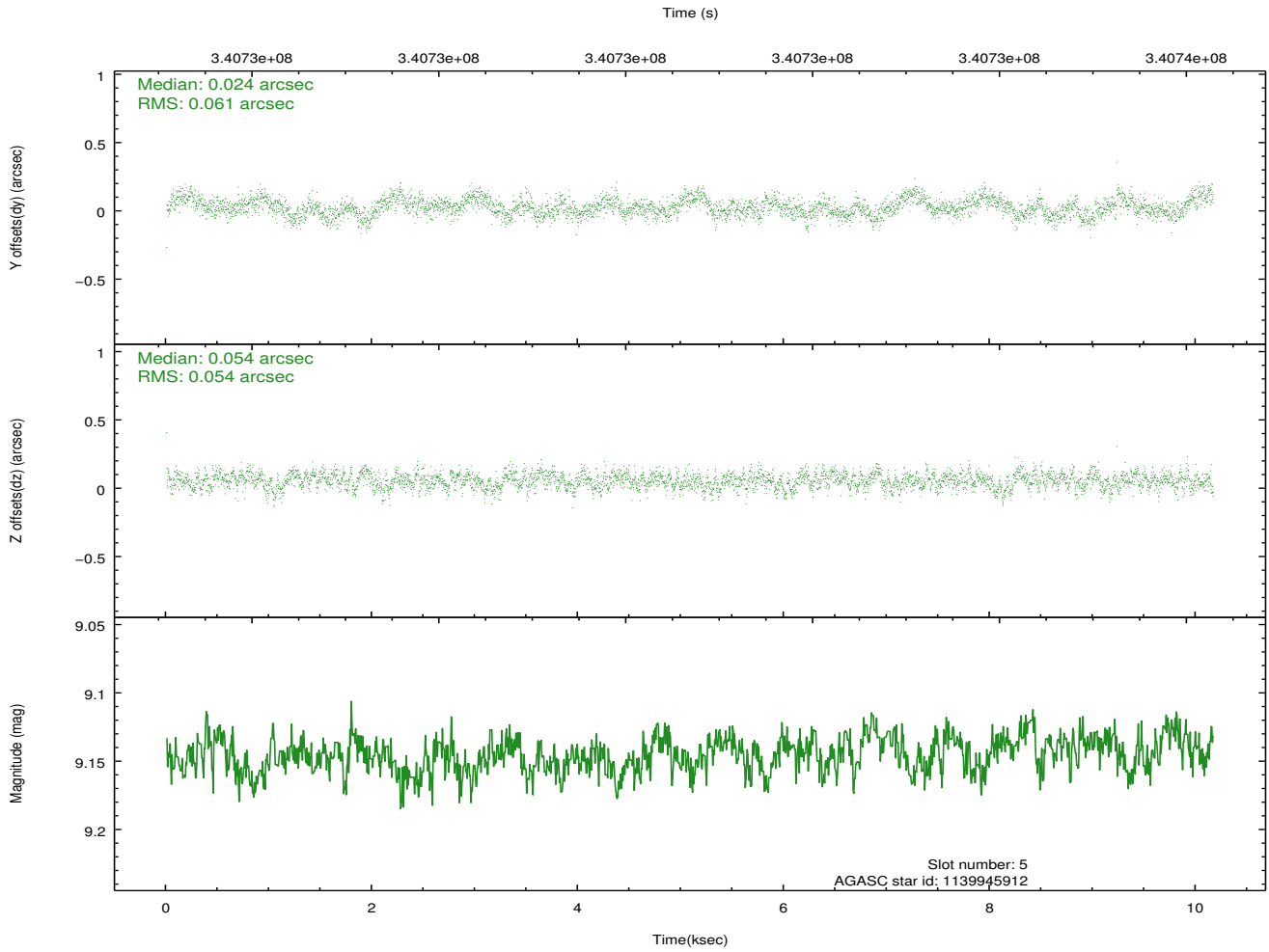
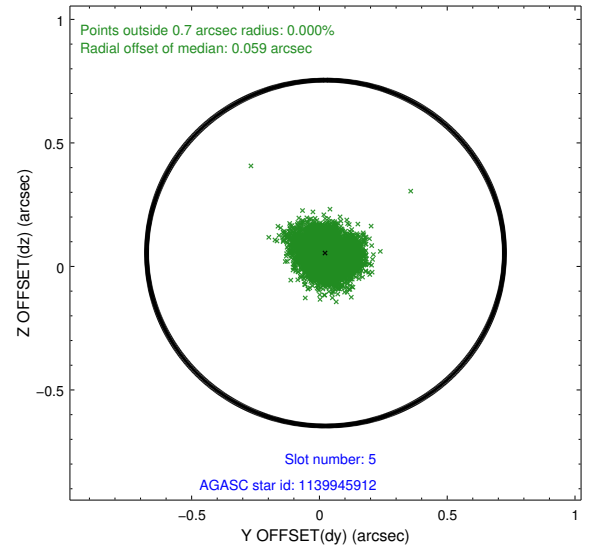
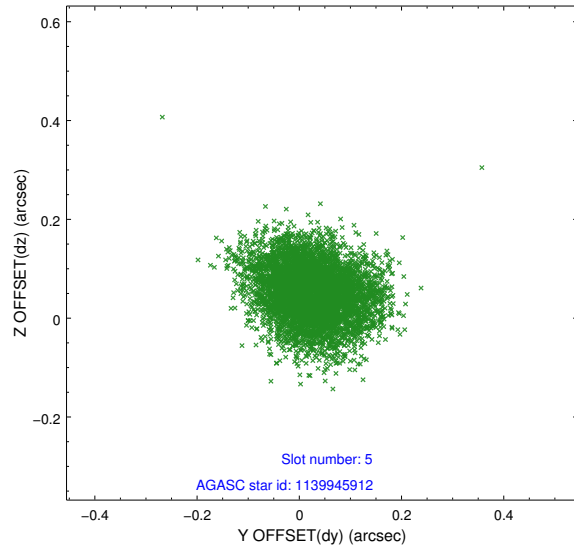
2.4.1 Slot 3



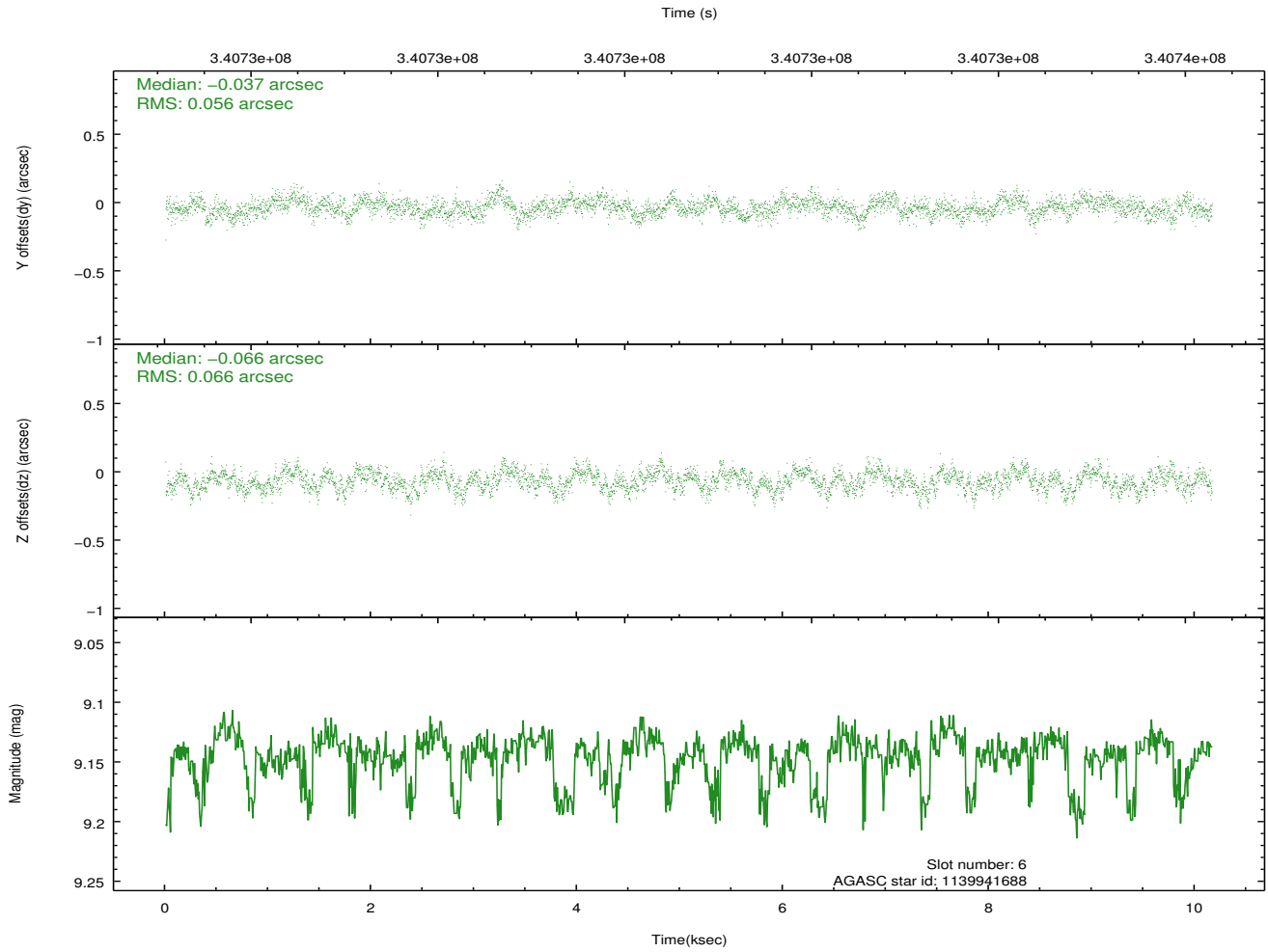
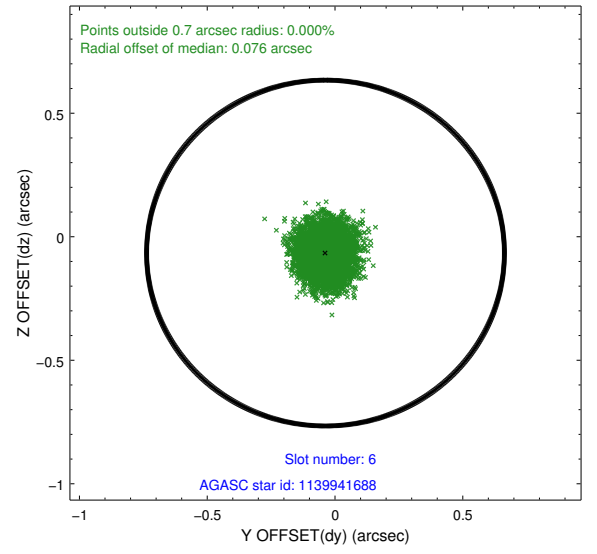
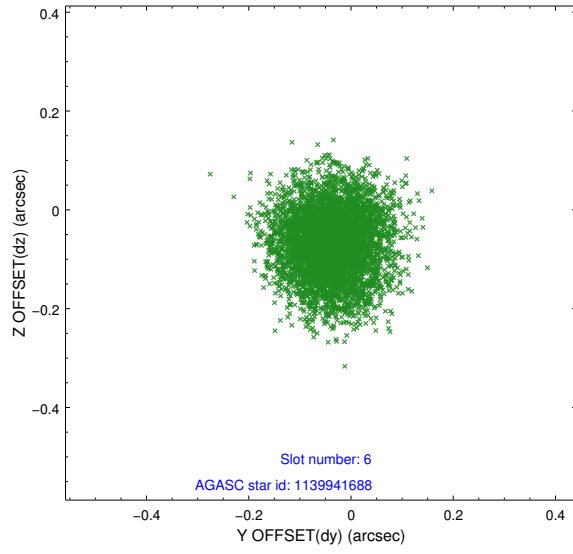
2.4.2 Slot 4



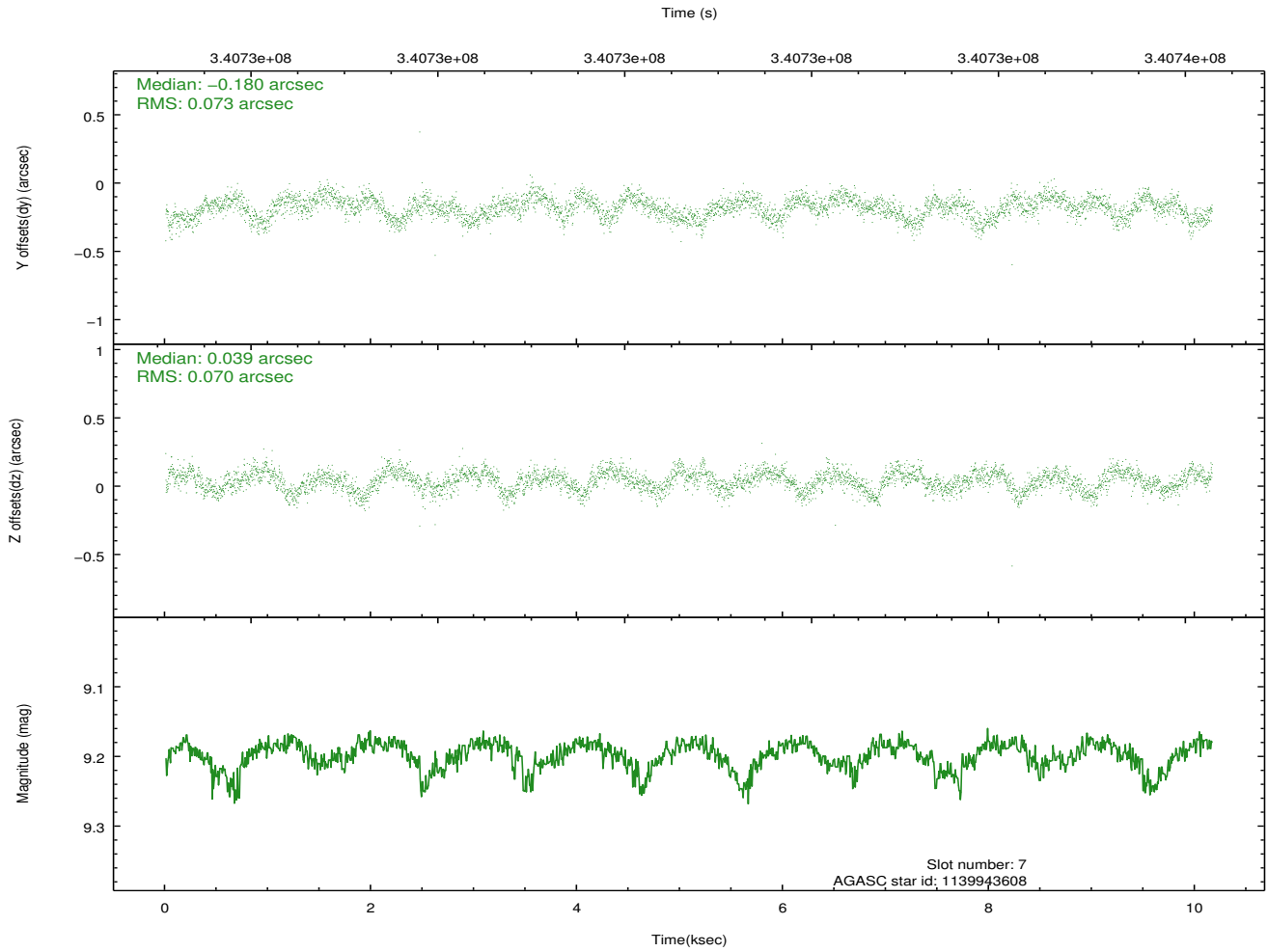
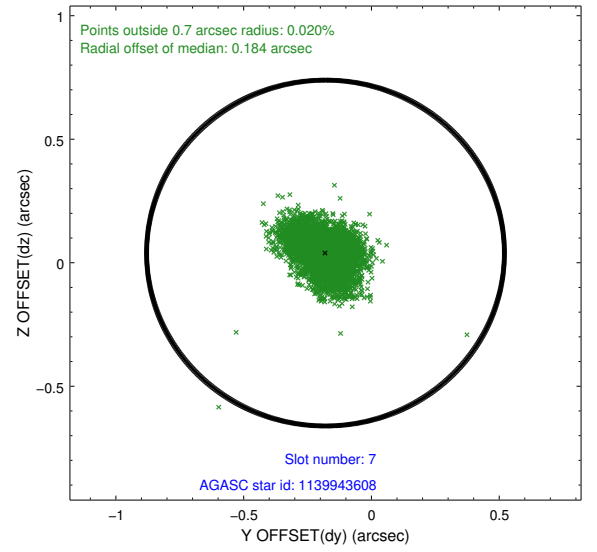
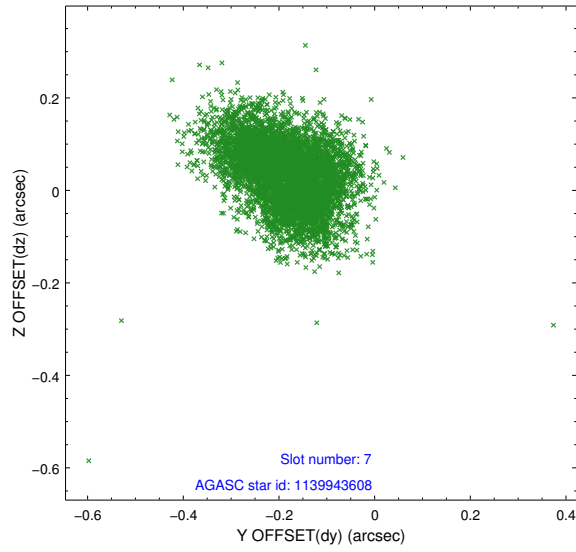
2.4.3 Slot 5



2.4.4 Slot 6

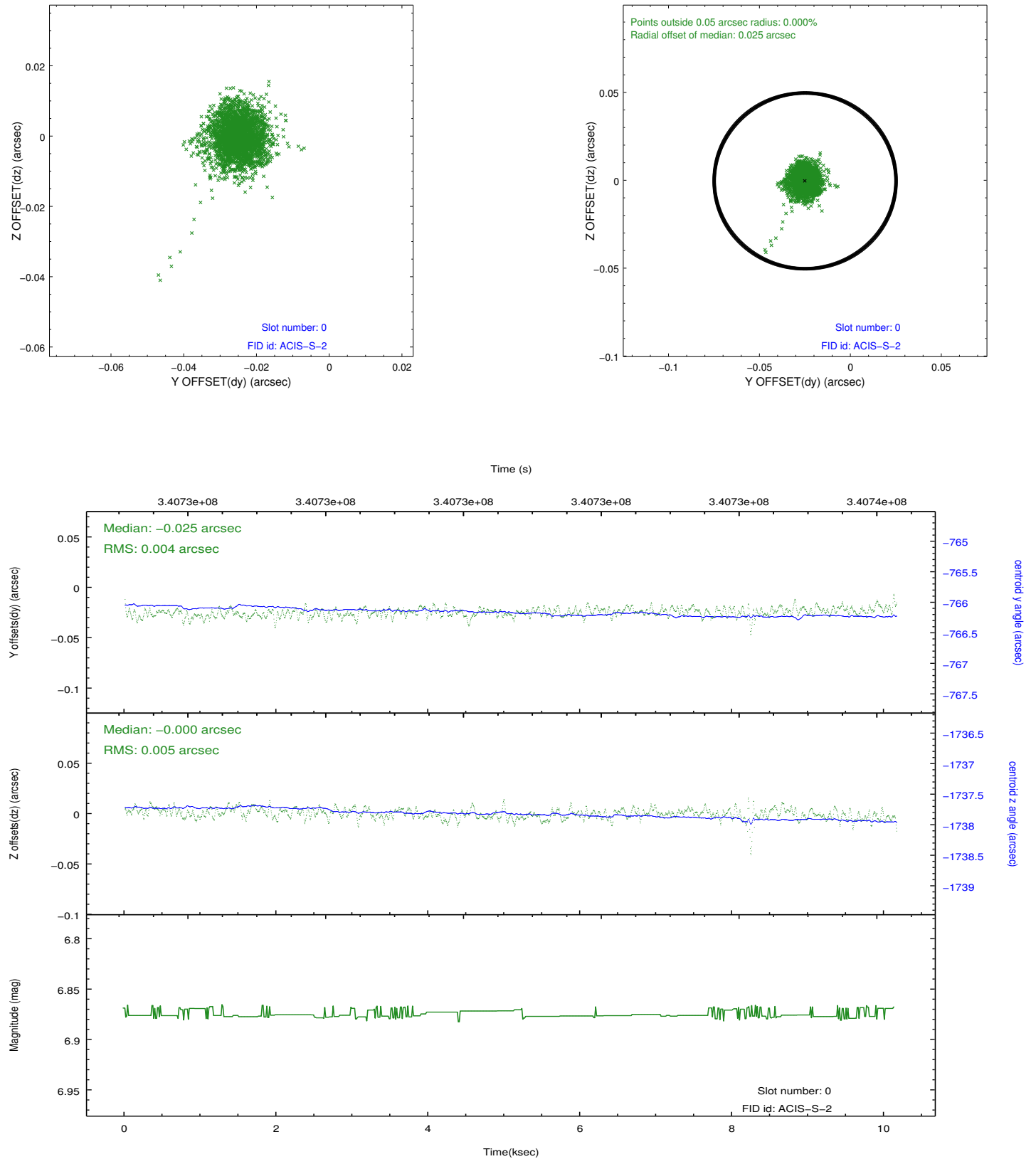


2.4.5 Slot 7

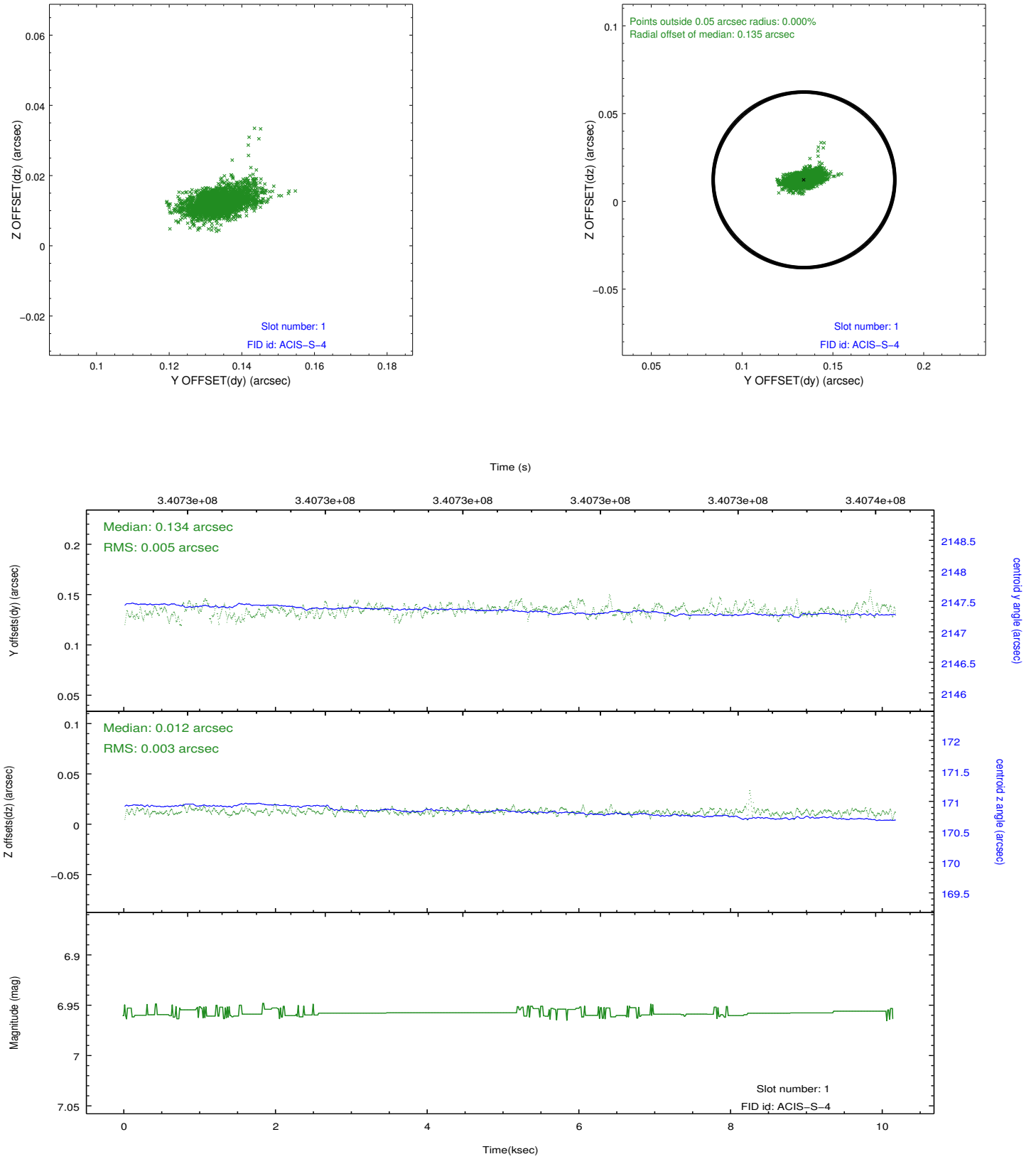


2.5 FID Slots

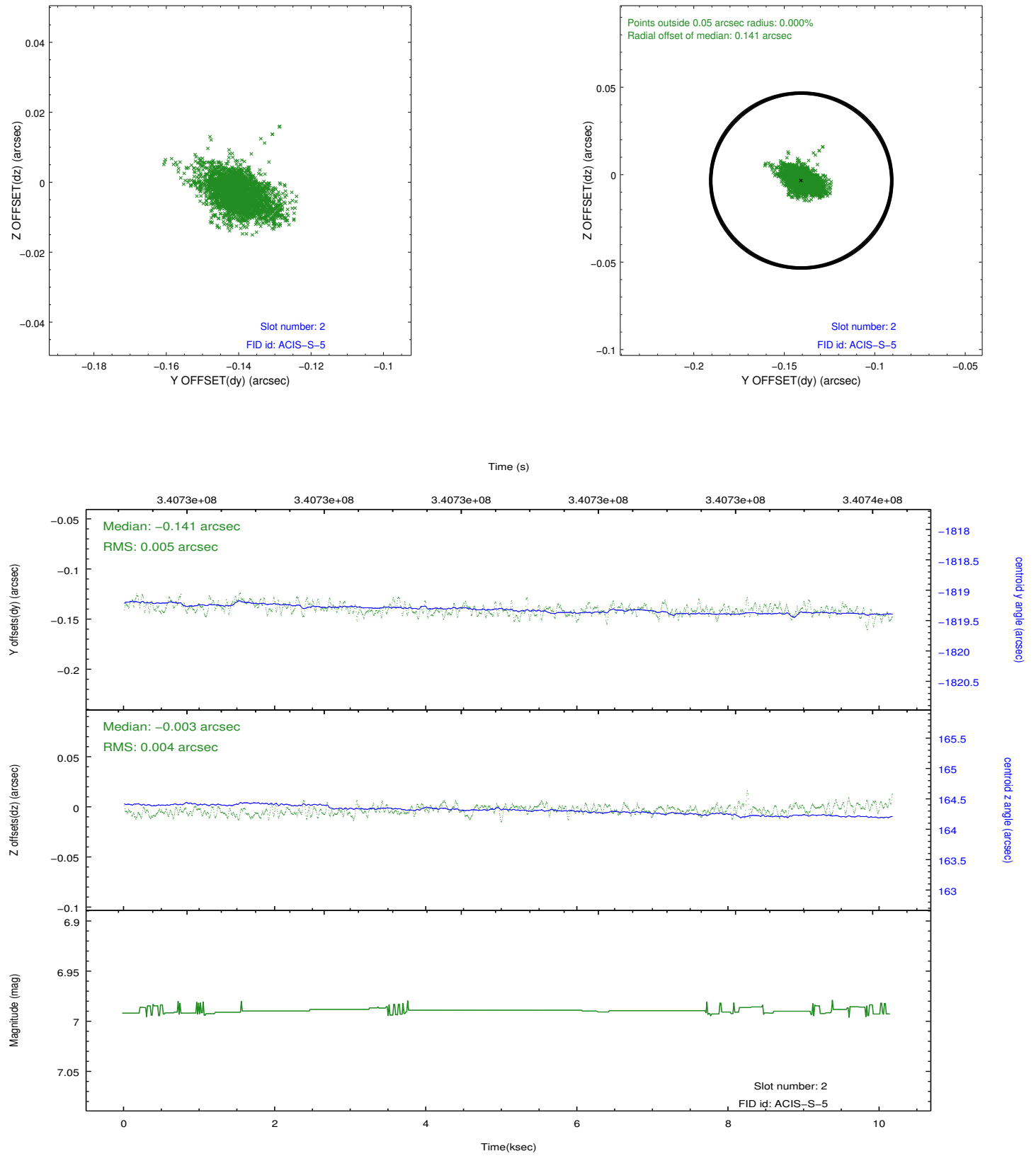
2.5.1 Slot 0



2.5.2 Slot 1



2.5.3 Slot 2



A Summary

A.1 Status

V&V Scientist	Joy Nichols
V&V Date (YYYY-MM-DD)	2012.05.23
V&V Edition	1
V&V Disposition and Status	OK
V&V Charge Time	10.15825

A.2 Comments