

# V&V Reference Report

## L2 ASCDS Version : 8.4.4

Observation 8775 - L2 Version 2  
Chandra X-Ray Center

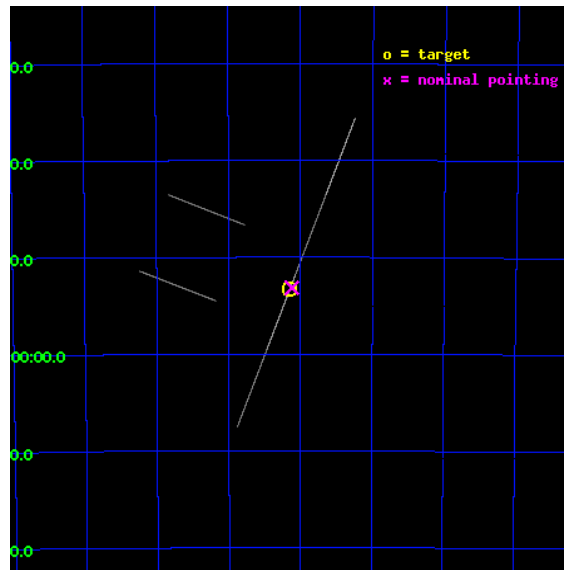
L2 Processing Date : May 4 2012

## Contents

<b>1</b>	<b>Front</b>	<b>2</b>
<b>2</b>	<b>OBI</b>	<b>3</b>
2.1	OBI . . . . .	3
2.1.1	Images . . . . .	3
2.1.2	Bias . . . . .	3
2.1.3	Parameters . . . . .	4
2.1.4	Events . . . . .	4
2.2	Compared Parameters . . . . .	5
2.3	Aspect . . . . .	6
2.4	Star Slots . . . . .	9
2.4.1	Slot 3 . . . . .	9
2.4.2	Slot 4 . . . . .	10
2.4.3	Slot 5 . . . . .	11
2.4.4	Slot 6 . . . . .	12
2.4.5	Slot 7 . . . . .	13
2.5	FID Slots . . . . .	14
2.5.1	Slot 0 . . . . .	14
2.5.2	Slot 1 . . . . .	15
2.5.3	Slot 2 . . . . .	16
<b>A</b>	<b>Summary</b>	<b>17</b>
A.1	Status . . . . .	17
A.2	Comments . . . . .	17

# 1 Front

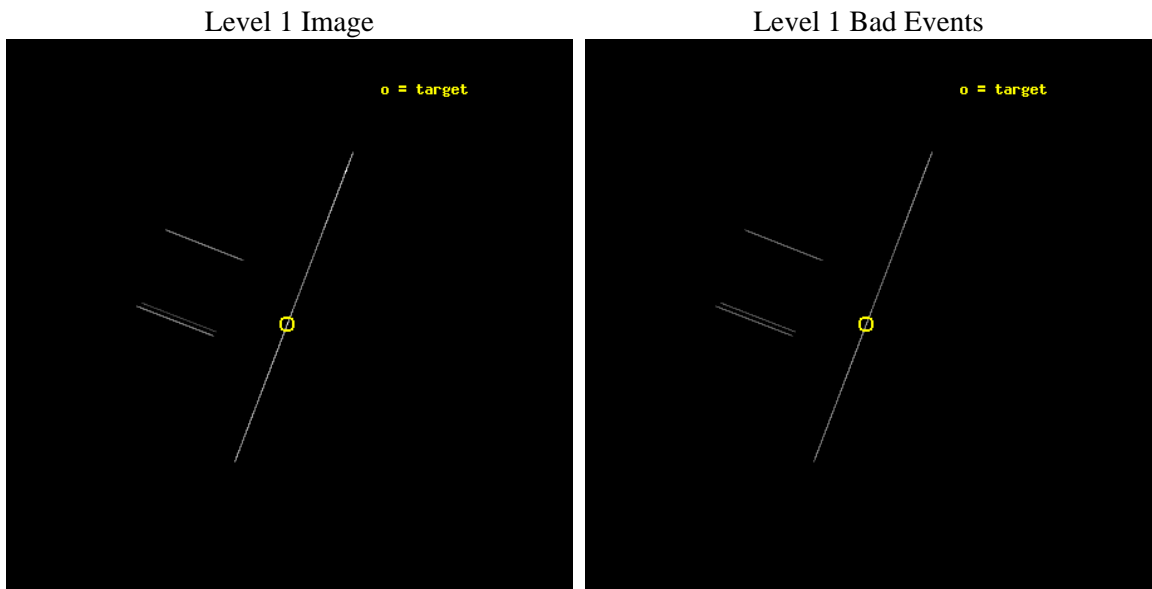
seq_num	500824	Sequence number
obs_id	8775	Observation id
title	TINY HICCUPS TO TITANIC EXPLOSIONS: Tackling Transients in Anomalous X-ray Pulsars	Proposal title
observer	Professor Victoria Kaspi	Principal investigator
object	1E 1048.1-5937	Source name
ra_targ	162.537083	Observer's specified target RA [deg]
dec_targ	-59.889	Observer's specified target Dec [deg]
ra_nom	162.5294584208	Nominal RA [deg]
dec_nom	-59.886089833513	Nominal Dec [deg]
roll_nom	111.09636244546	Nominal Roll [deg]
revision	2	Processing version of data
ontime	9658.0	Sum of GTIs [s]
livetime	9620.2734375	Livetime [s]
ontime2	9658.0	Sum of GTIs [s]
ontime3	9658.0	Sum of GTIs [s]
ontime5	9658.0	Sum of GTIs [s]
ontime6	9658.0	Sum of GTIs [s]
ontime7	9658.0	Sum of GTIs [s]
ontime8	9658.0	Sum of GTIs [s]
l2events	200136	Number of level 2 events



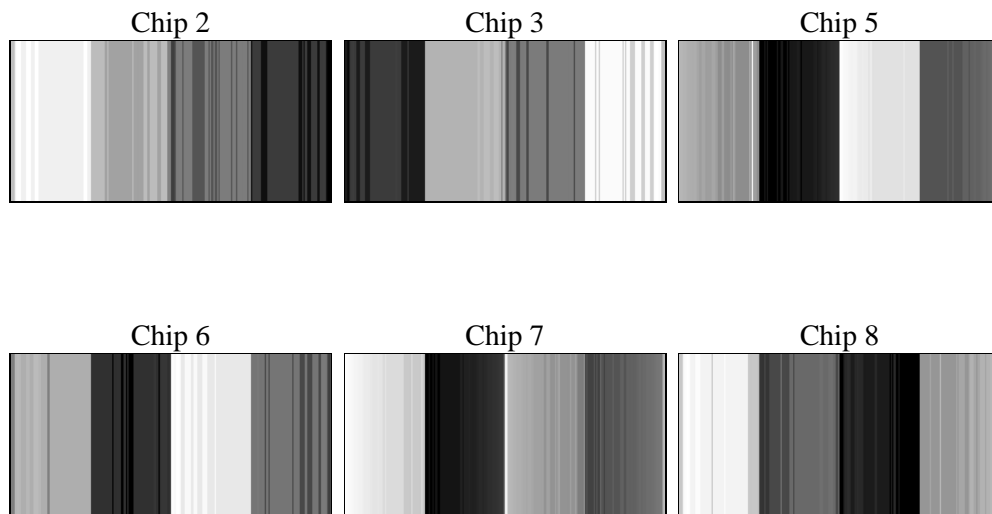
## 2 OBI

### 2.1 OBI

#### 2.1.1 Images



#### 2.1.2 Bias



### 2.1.3 Parameters

obi_num	0	Obi number	sched_exp_time	9500.000000	[s] Scheduled observation exposure time
ascdsver	8.4.4	Processing system revision	ontime	9658.0	Sum of GTIs [s]
caldsver	4.4.9	&#160	ontime2	9658.0	Sum of GTIs [s]
date	2012-05-04T01:39:37	Date and time of file creation	ontime3	9658.0	Sum of GTIs [s]
revision	2	Processing version of data	ontime5	9658.0	Sum of GTIs [s]
			ontime6	9658.0	Sum of GTIs [s]
			ontime7	9658.0	Sum of GTIs [s]
			ontime8	9658.0	Sum of GTIs [s]
			l1events	377637	Number of level 1 events

### 2.1.4 Events

	ccd 2	ccd 3	ccd 5	ccd 6	ccd 7	ccd 8
level 1 events	21386	23499	165376	23726	94716	48934
rejected events	5443	6227	19856	6461	17131	10231
rejected %	25%	26%	12%	27%	18%	20%

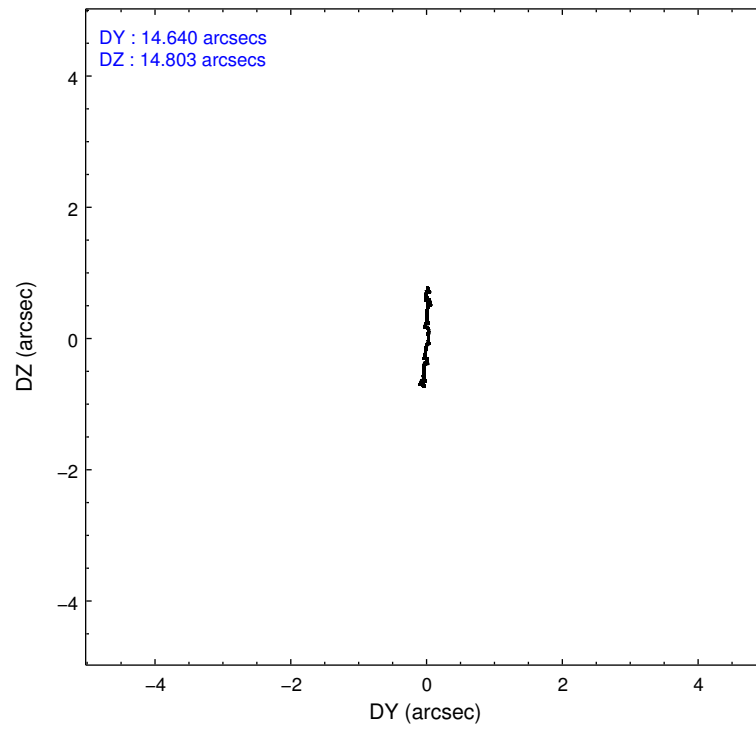
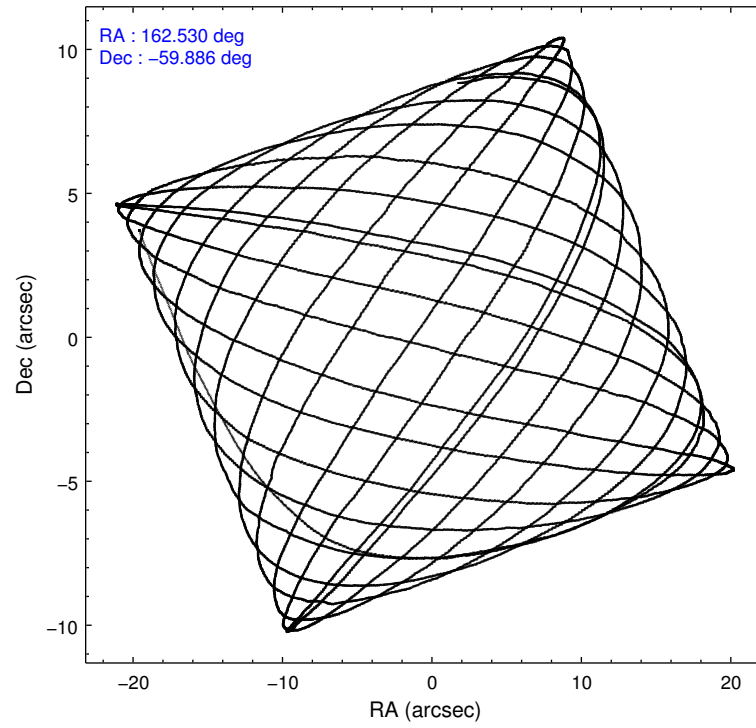
	ccd 2	ccd 3	ccd 5	ccd 6	ccd 7	ccd 8
grade 0 events	2586	2720	61012	2431	10385	8632
	12%	11%	36%	10%	10%	17%
grade 1 events	83	90	179	106	191	205
	0%	0%	0%	0%	0%	0%
grade 2 events	6715	7275	47882	7436	21965	13132
	31%	30%	28%	31%	23%	26%
grade 3 events	2314	2469	1995	2244	6493	4726
	10%	10%	1%	9%	6%	9%
grade 4 events	2332	2237	1791	2154	6345	4604
	10%	9%	1%	9%	6%	9%
grade 5 events	3877	4492	9534	4715	11577	6503
	18%	19%	5%	19%	12%	13%
grade 6 events	3479	4216	42983	4640	37760	11132
	16%	17%	25%	19%	39%	22%
grade 7 events	0	0	0	0	0	0
	0%	0%	0%	0%	0%	0%

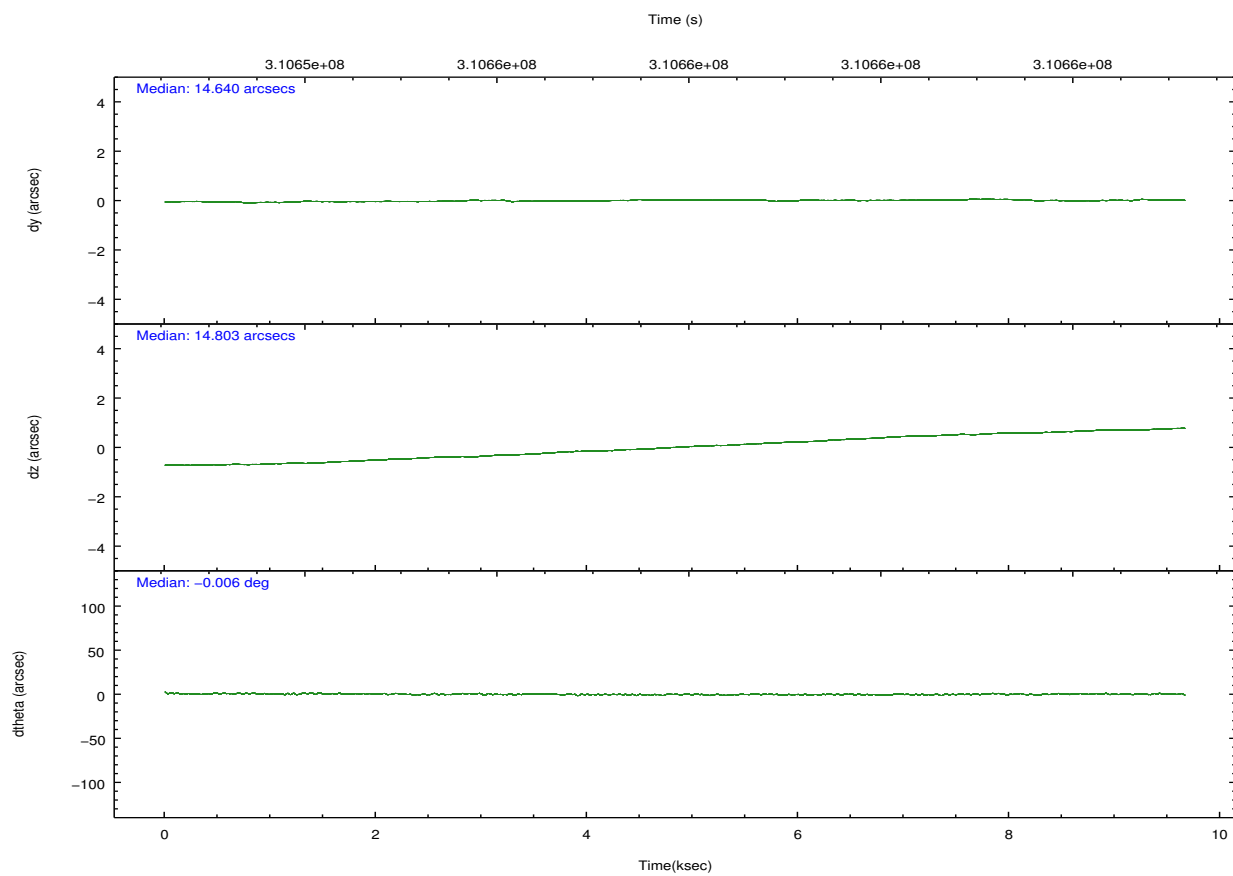
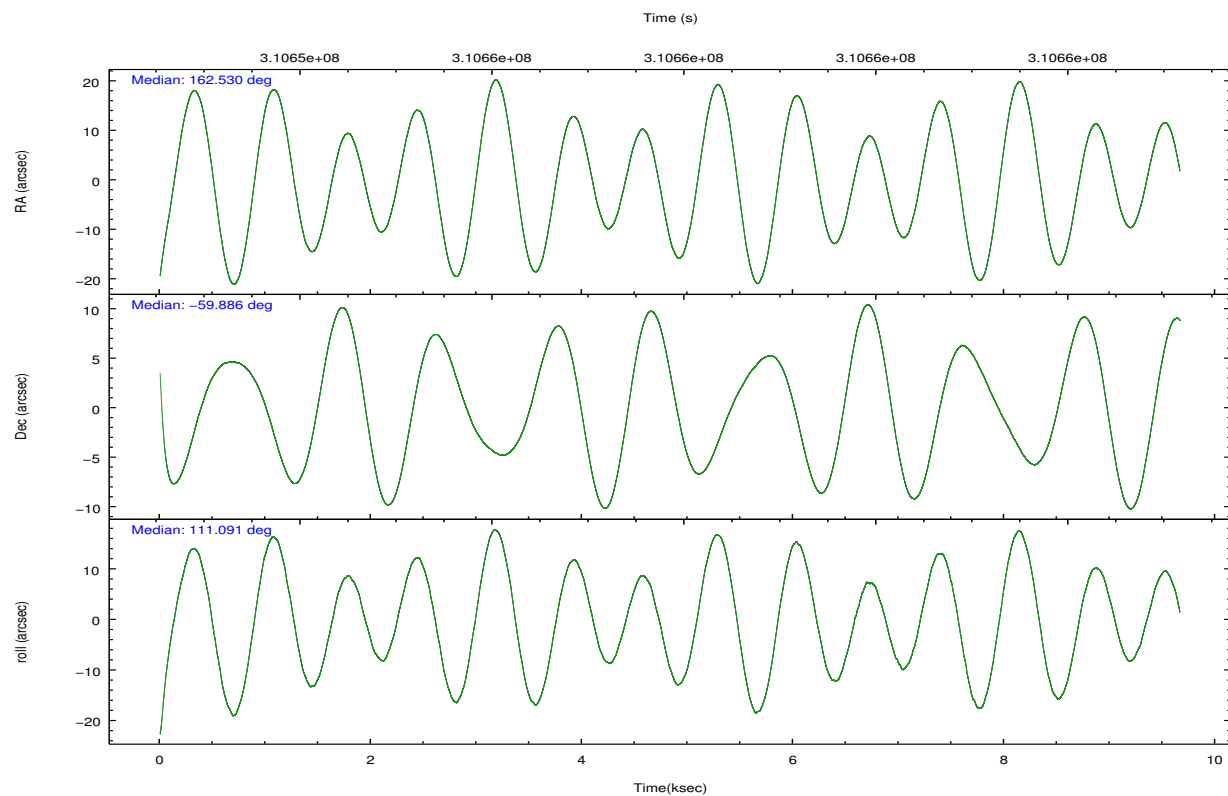


## 2.2 Compared Parameters

Parameter	Planned	Actual	Parameter	Planned	Actual
Instrument	ACIS	ACIS	Obspar format version number	7	7
Detector	ACIS-235678	ACIS-235678	Obspar file type	PREDICTED	ACTUAL
Grating	NONE	NONE	Obspar update status	NONE	UPDATED
Data mode	CC33_FAINT	CC33_FAINT	CCD I0 on	N	N
Observation mode	POINTING	POINTING	CCD I1 on	N	N
[deg] Pointing RA	162.572286	162.5294584207964	CCD I2 on	O2	Y
[deg] Pointing Dec	-59.902926	-59.88608983351332	CCD I3 on	O3	Y
[deg] Pointing Roll	110.976802	111.0963624454639	CCD S0 on	N	N
[mm] SIM focus pos	-0.684267	-0.6828225247311905	CCD S1 on	O1	Y
[mm] SIM defocus	0	0.001444936568705701	CCD S2 on	Y	Y
[mm] SIM translation stage pos	-190.132523	-190.1425803651734	CCD S3 on	Y	Y
[mm] SIM translation stage offset	0	0.01005778216563158	CCD S4 on	Y	Y
[s] Observation start time (MET)	310653197.184000	310652110.16699	CCD S5 on	N	N
Observation start date	2007-11-05T12:32:12	2007-11-05T12:15:10	Number of optional ACIS chips dropped	0	0
[s] Observation end time (MET)	310662697.184000	310663869.99256	On-chip summing requested	N	N
Observation end date	2007-11-05T15:10:32	2007-11-05T15:31:09	Subarray requested	NONE	NONE
Read mode	CONTINUOUS	CONTINUOUS	Alternating exposures requested	N	N
			[s] Primary exposure time	0.000000	0

## 2.3 Aspect



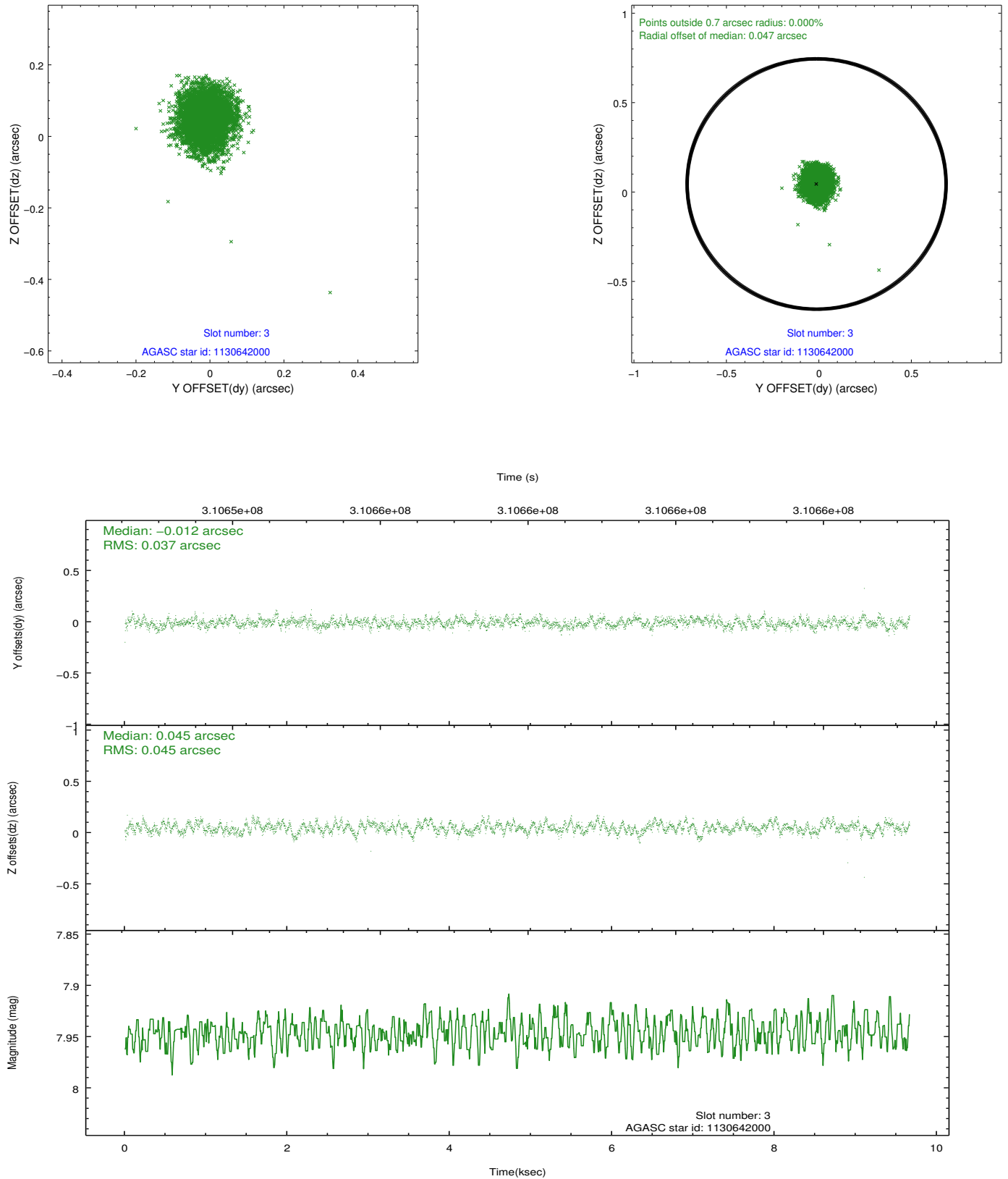


### Slot Statistics

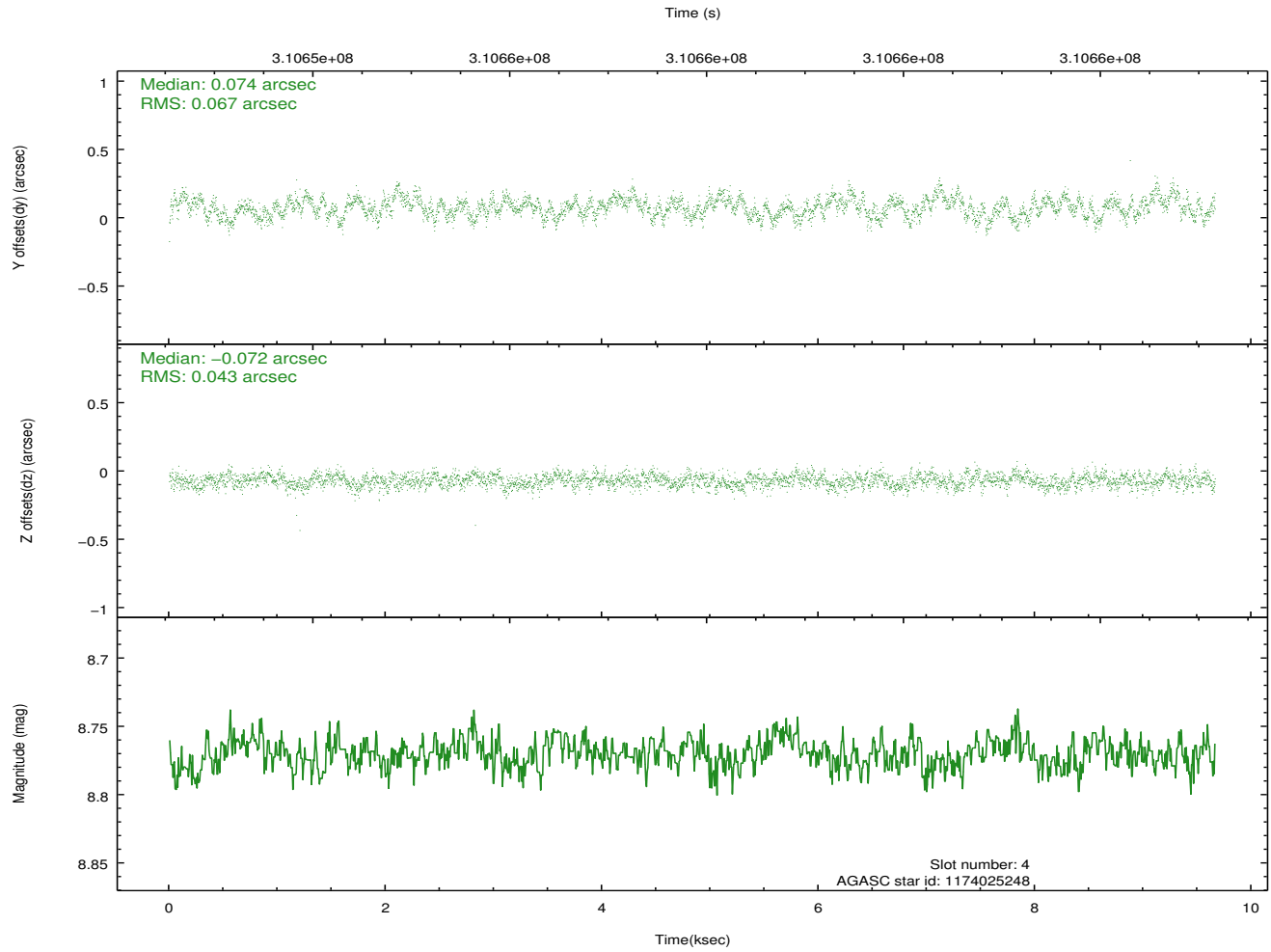
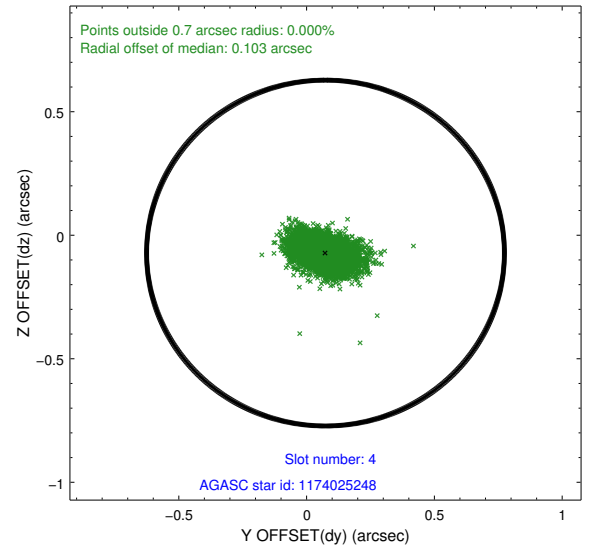
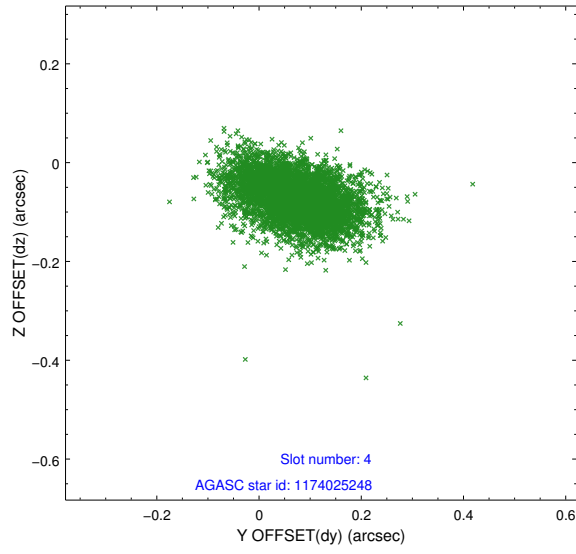
slot	status	id	mag	n_pts	med_dy	med_dz	dr1	dr2	ra	dec	mean_y	mean_z
0	FID	ACIS-S-1	7.18	2357	0.067	-0.049	0.022	0.037	0.000000	0.000000	928.51	-1731.81
1	FID	ACIS-S-5	7.22	2357	-0.155	0.032	0.008	0.012	0.000000	0.000000	-1820.40	165.25
2	FID	ACIS-S-6	7.33	2357	0.067	0.030	0.027	0.037	0.000000	0.000000	393.46	809.84
3	GUIDE	1130642000	7.95	4714	-0.012	0.045	0.062	0.099	162.836255	-59.743891	362.80	-651.42
4	GUIDE	1174025248	8.77	4714	0.074	-0.072	0.083	0.140	161.784801	-60.573378	-1762.47	2167.41
5	GUIDE	1174166216	8.01	4715	-0.035	0.096	0.064	0.104	163.522199	-60.352910	-2129.03	-994.40
6	GUIDE	1130632200	7.55	4714	-0.155	-0.081	0.071	0.129	161.433843	-59.407820	2393.96	1316.01
7	GUIDE	1130640208	8.90	4711	0.123	0.011	0.112	0.184	163.152122	-59.182387	2036.18	-1924.84

## 2.4 Star Slots

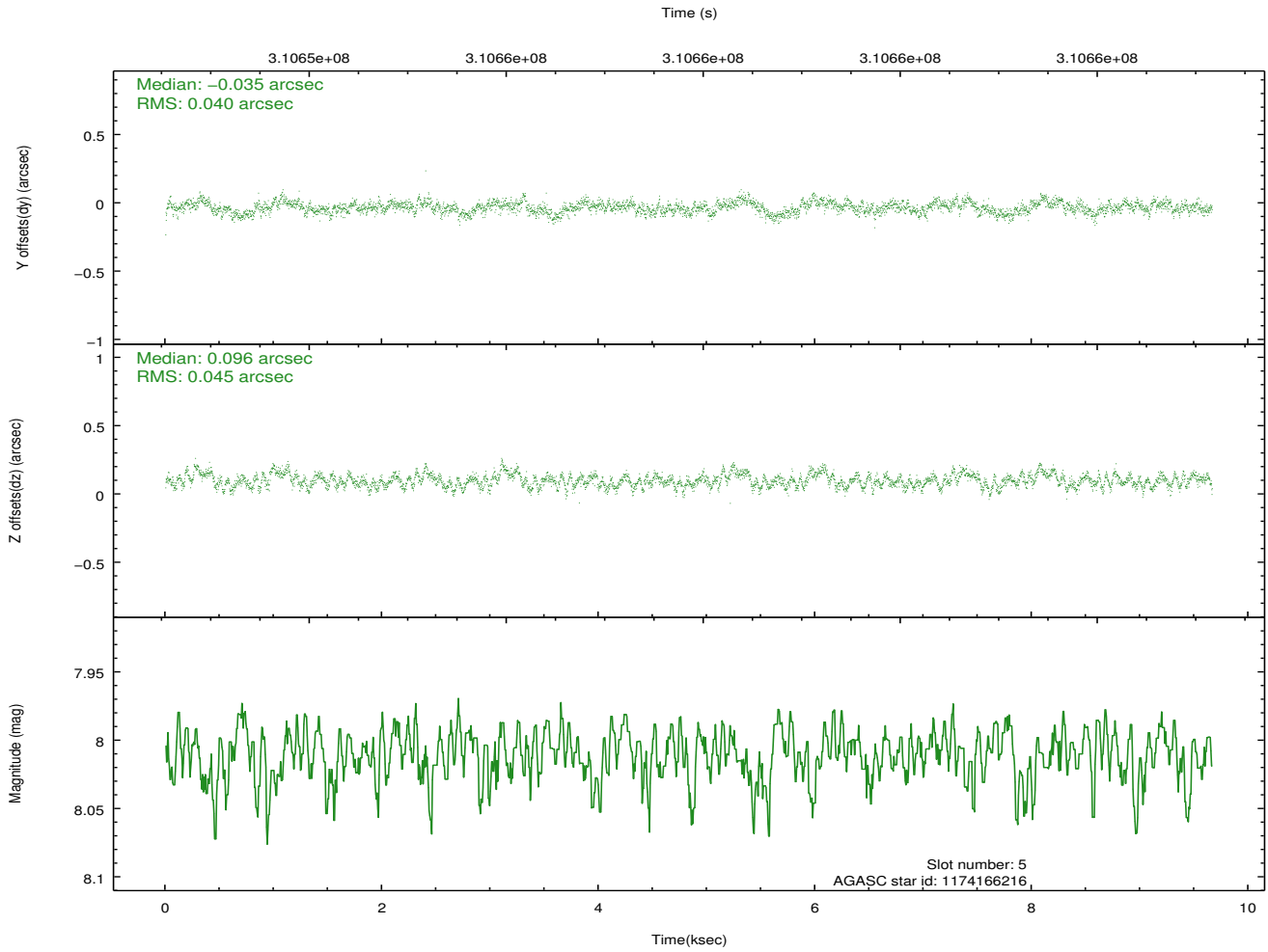
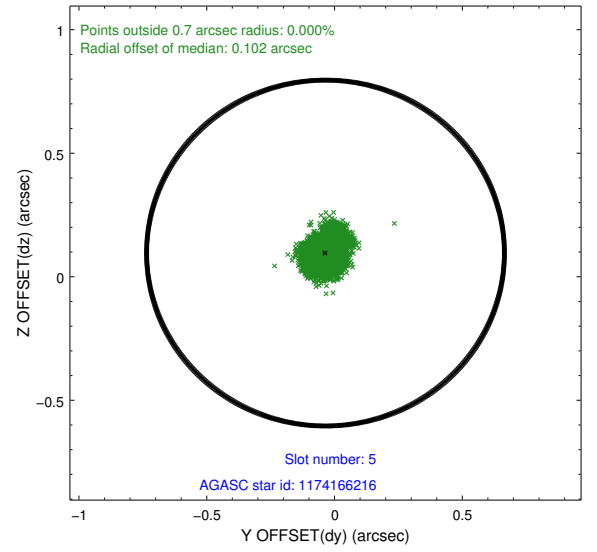
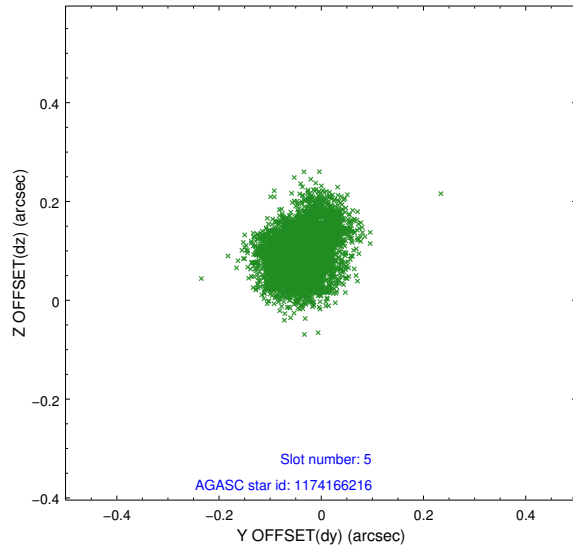
### 2.4.1 Slot 3



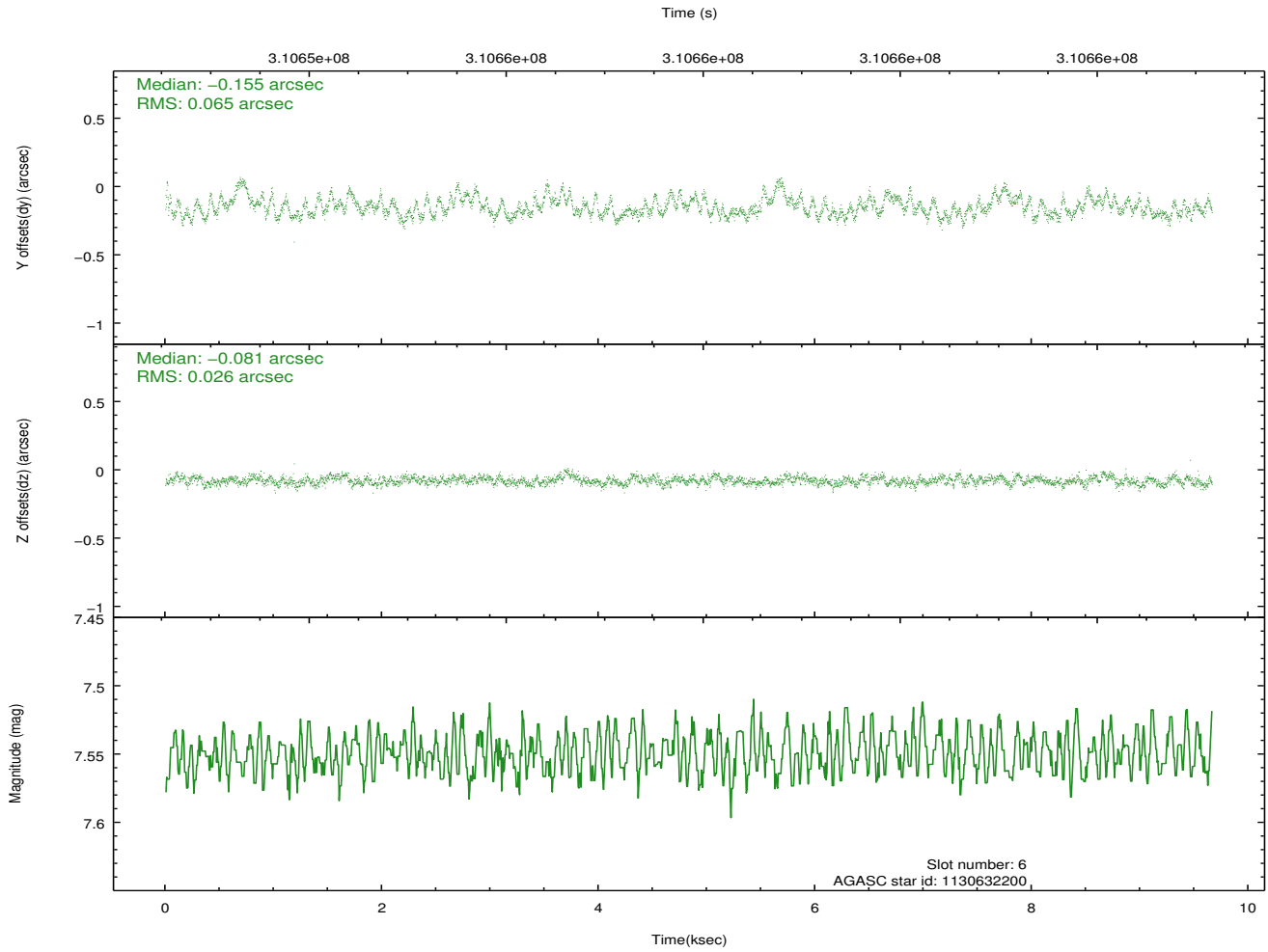
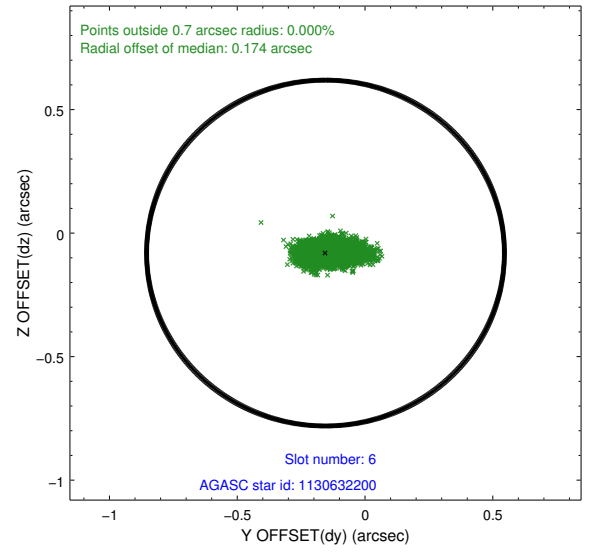
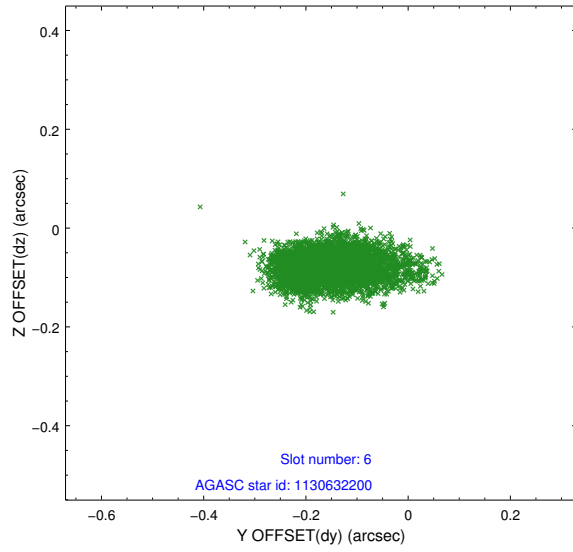
## 2.4.2 Slot 4



### 2.4.3 Slot 5

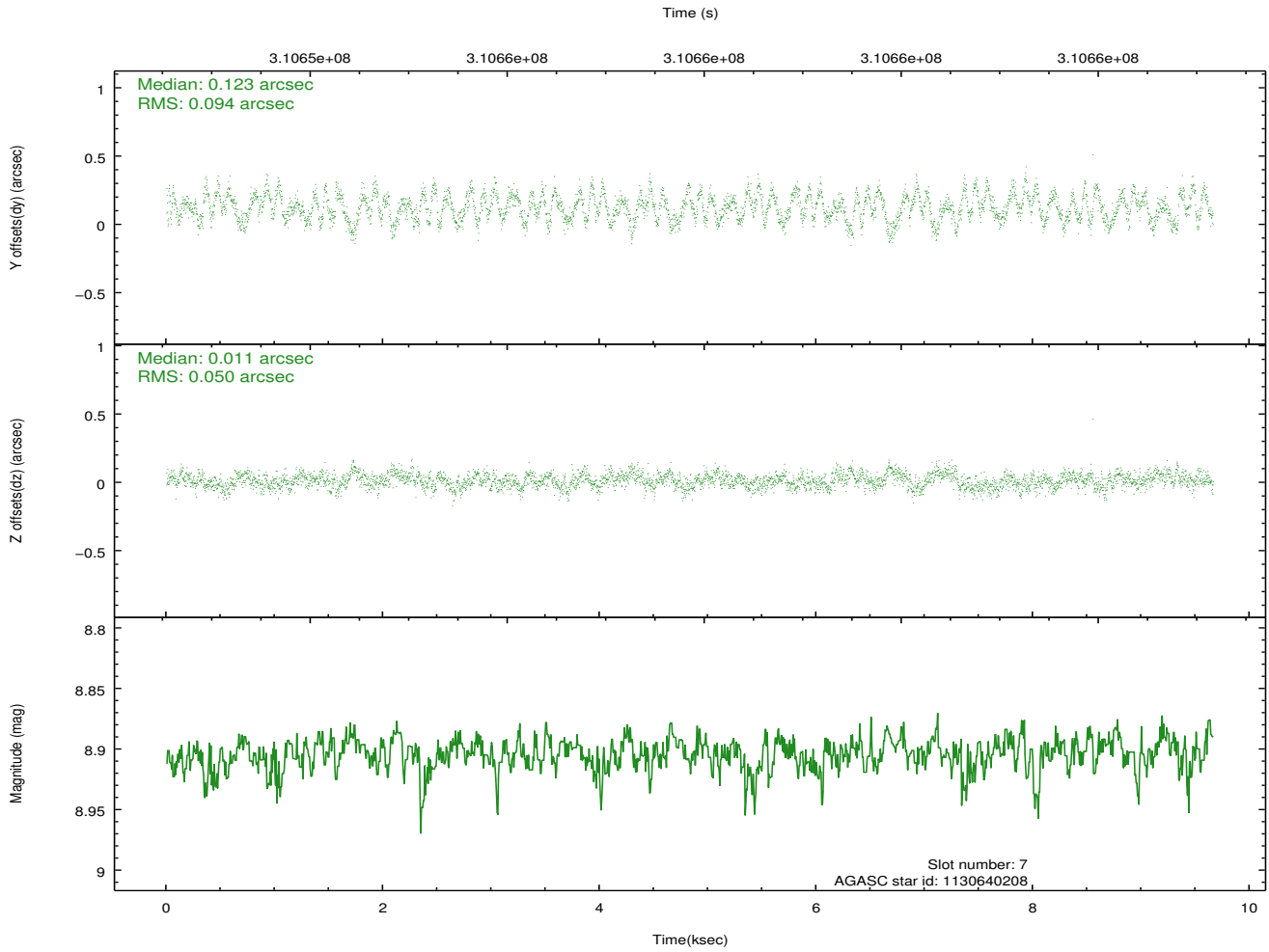
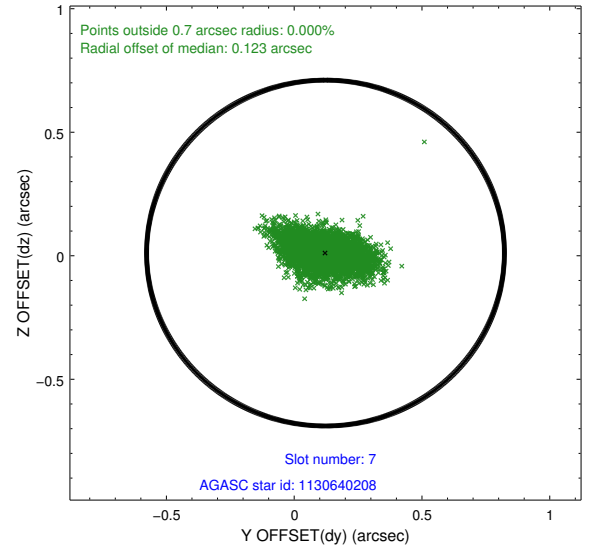
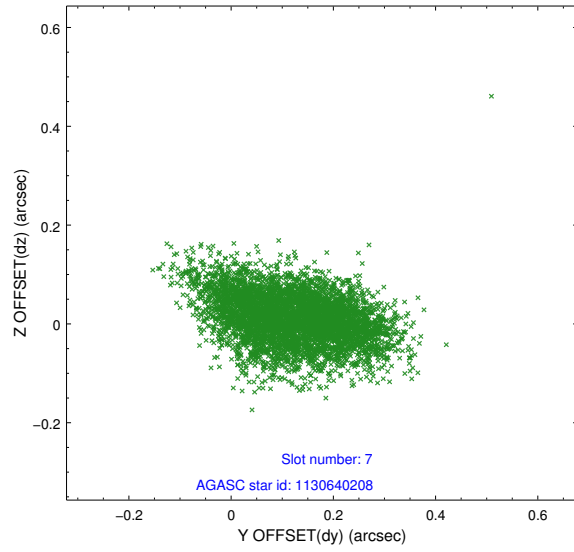


## 2.4.4 Slot 6



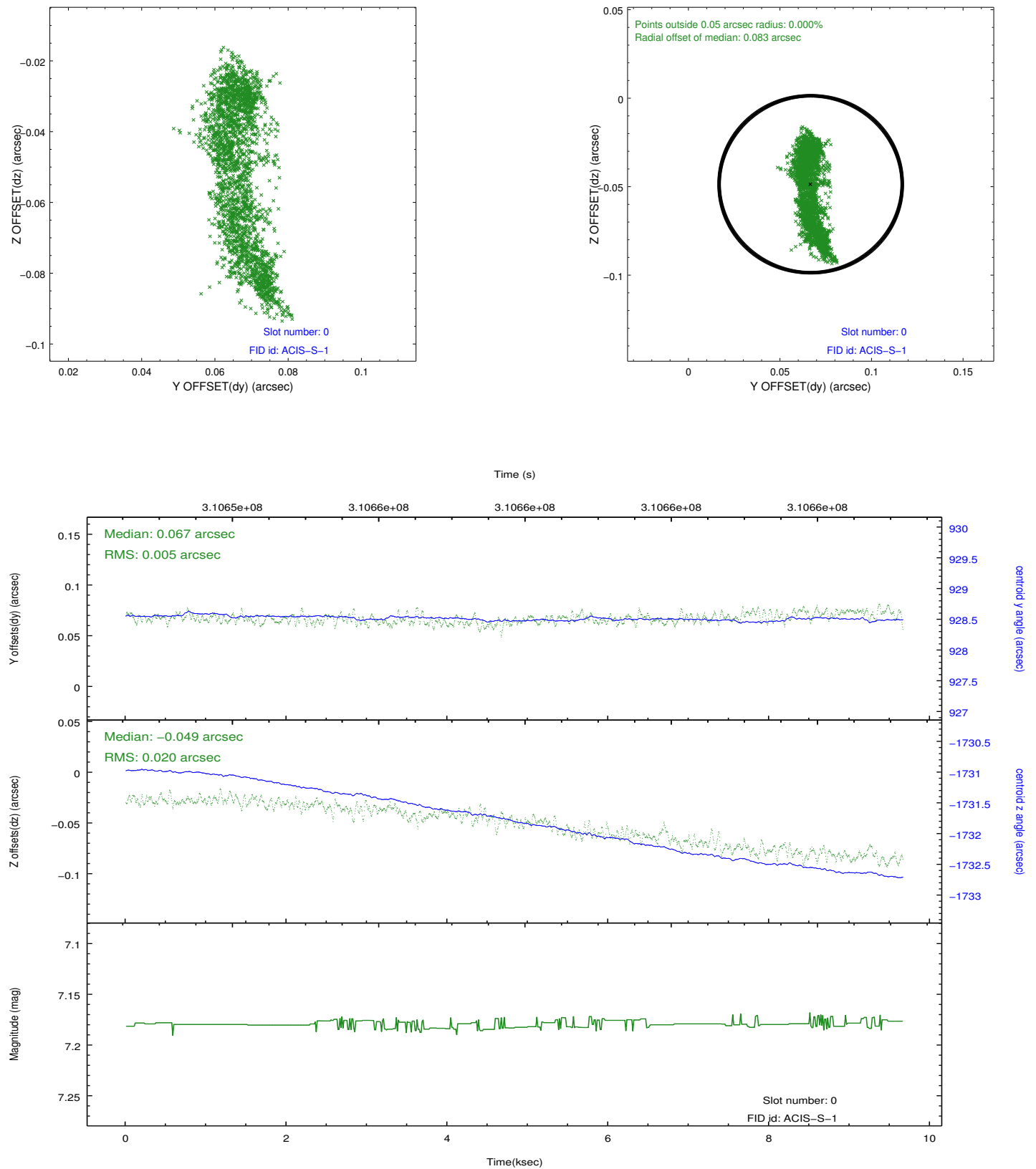


## 2.4.5 Slot 7

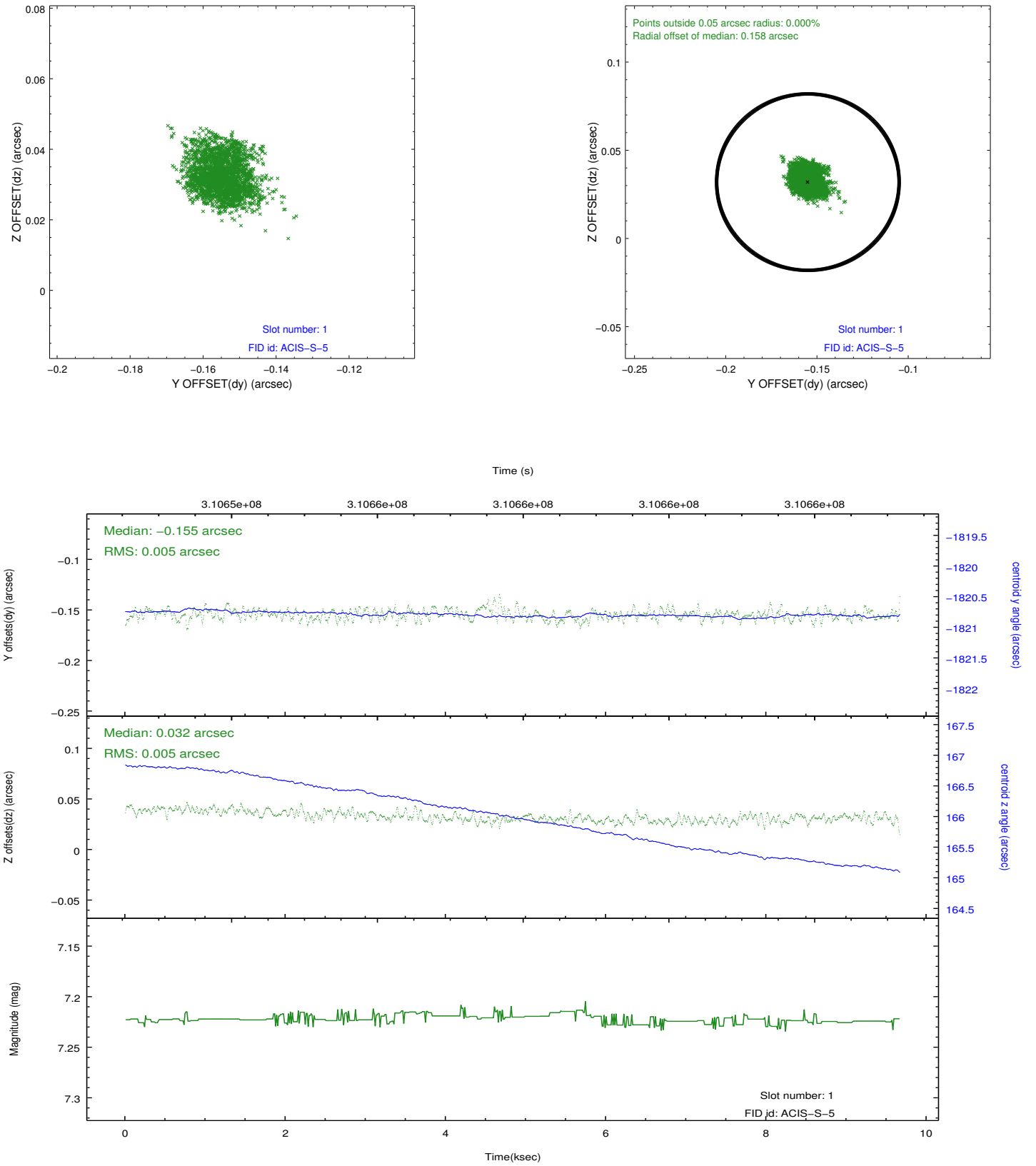


## 2.5 FID Slots

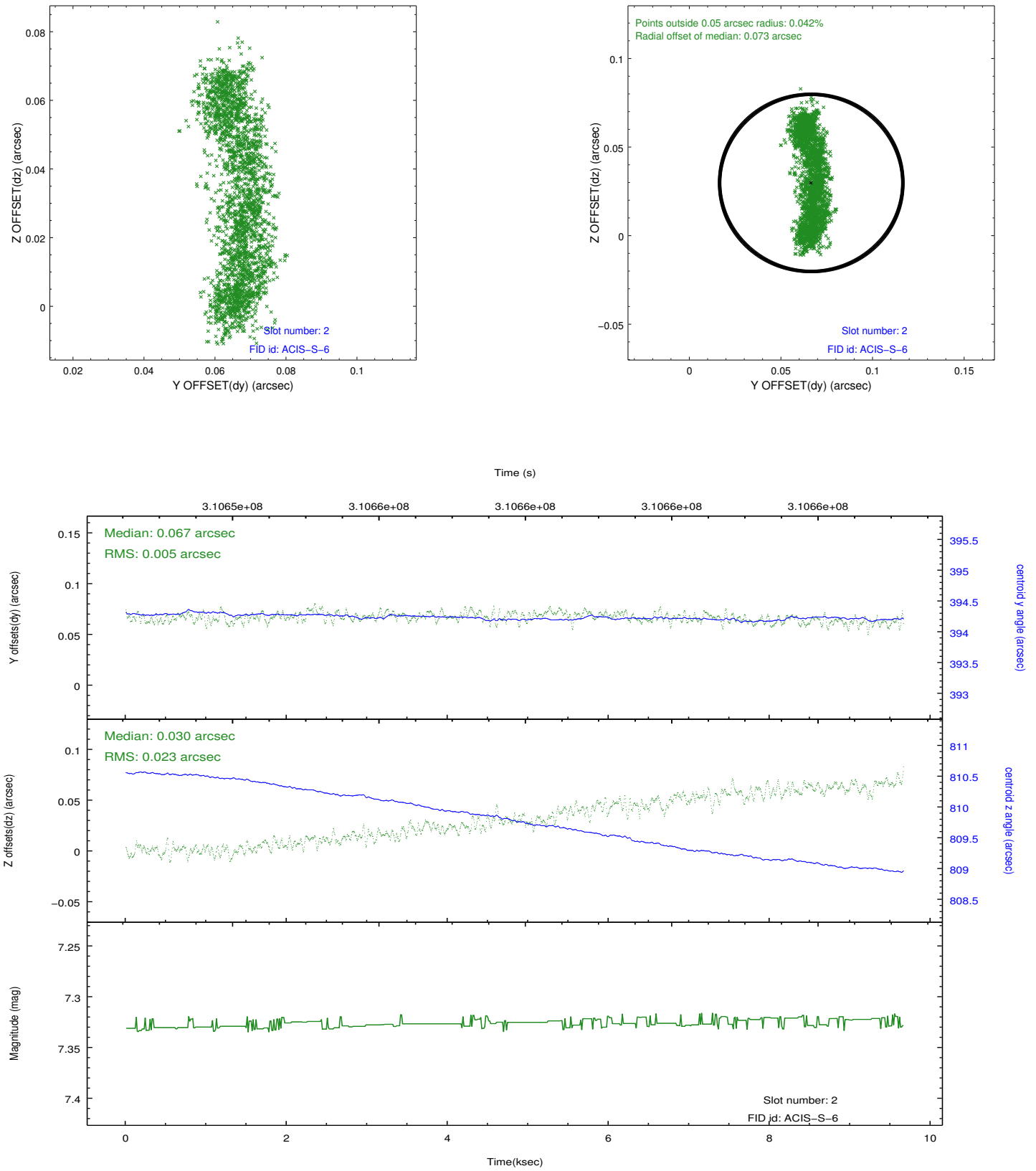
### 2.5.1 Slot 0



## 2.5.2 Slot 1



### 2.5.3 Slot 2



## A Summary

### A.1 Status

V&V Scientist	Joy Nichols
V&V Date (YYYY-MM-DD)	2012.05.08
V&V Edition	1
V&V Disposition and Status	OK
V&V Charge Time	9.658

### A.2 Comments

Strong source present at sky x,y ~ 4071, 4082.