

# V&V Reference Report

## L2 ASCDS Version : 8.4.4

Observation 9064 - L2 Version 2  
Chandra X-Ray Center

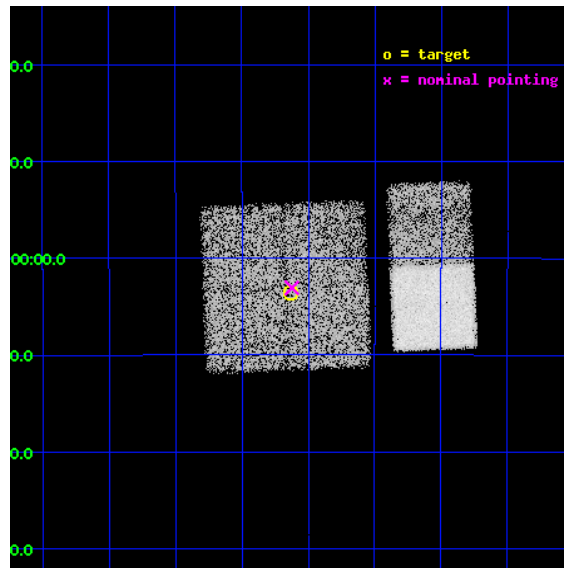
L2 Processing Date : Jun 1 2012

## Contents

<b>1</b>	<b>Front</b>	<b>2</b>
<b>2</b>	<b>OBI</b>	<b>3</b>
2.1	OBI . . . . .	3
2.1.1	Images . . . . .	3
2.1.2	Bias . . . . .	3
2.1.3	Parameters . . . . .	4
2.1.4	Events . . . . .	4
2.2	Compared Parameters . . . . .	5
2.3	Aspect . . . . .	6
2.4	Star Slots . . . . .	9
2.4.1	Slot 3 . . . . .	9
2.4.2	Slot 4 . . . . .	10
2.4.3	Slot 5 . . . . .	11
2.4.4	Slot 6 . . . . .	12
2.4.5	Slot 7 . . . . .	13
2.5	FID Slots . . . . .	14
2.5.1	Slot 0 . . . . .	14
2.5.2	Slot 1 . . . . .	15
2.5.3	Slot 2 . . . . .	16
<b>A</b>	<b>Summary</b>	<b>17</b>
A.1	Status . . . . .	17
A.2	Comments . . . . .	17

# 1 Front

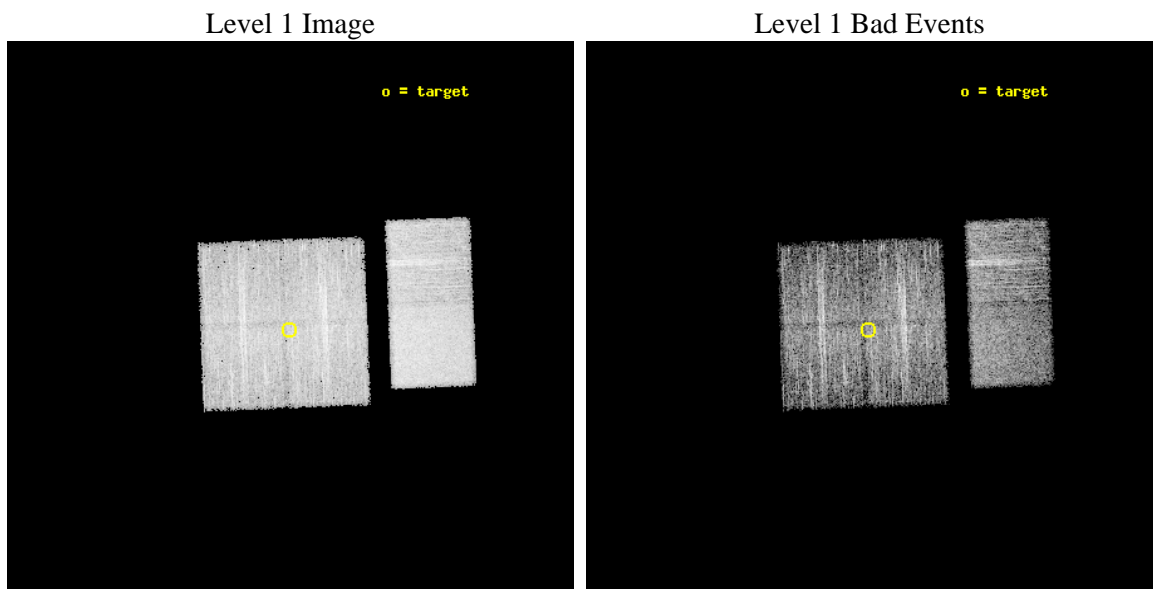
seq_num	400915	Sequence number
obs_id	9064	Observation id
title	Localization and Spectra of INTEGRAL-Selected Sources in the Galactic Plane	Proposal title
observer	Dr. John Tomsick	Principal investigator
object	IGR J17461-2204	Source name
dtcycle	0	&#160
cycle	P	events from which exps? Prim/Second/Both
ra_targ	266.533333	Observer's specified target RA [deg]
dec_targ	-22.058889	Observer's specified target Dec [deg]
ra_nom	266.5308392534	Nominal RA [deg]
dec_nom	-22.051136501684	Nominal Dec [deg]
roll_nom	87.731573058709	Nominal Roll [deg]
revision	2	Processing version of data
ontime	4950.3999816179	Sum of GTIs [s]
livetime	4887.7150362777	Livetime [s]
ontime0	4950.3199936152	Sum of GTIs [s]
ontime1	4950.3610336185	Sum of GTIs [s]
ontime2	4950.3999816179	Sum of GTIs [s]
ontime3	4950.3999816179	Sum of GTIs [s]
ontime6	4950.3999816179	Sum of GTIs [s]
ontime7	4950.3999816179	Sum of GTIs [s]
l2events	56818	Number of level 2 events



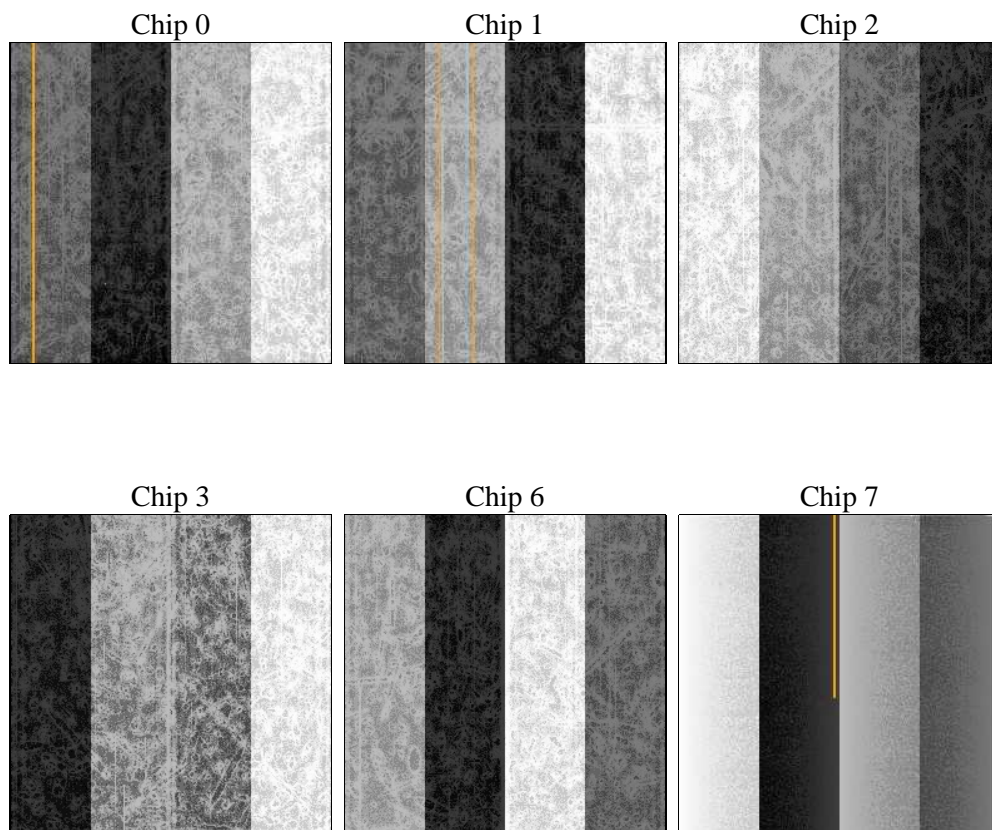
## 2 OBI

### 2.1 OBI

#### 2.1.1 Images



#### 2.1.2 Bias



### 2.1.3 Parameters

obi_num	0	Obi number	sched_exp_time	5000.000000	[s] Scheduled observation exposure time
ascdsver	8.4.4	Processing system revision	ontime	4950.3999816179	Sum of GTIs [s]
caldsver	4.4.9	&#160	ontime0	4950.3199936152	Sum of GTIs [s]
date	2012-06-01T06:30:16	Date and time of file creation	ontime1	4950.3610336185	Sum of GTIs [s]
revision	2	Processing version of data	ontime2	4950.3999816179	Sum of GTIs [s]
			ontime3	4950.3999816179	Sum of GTIs [s]
			ontime6	4950.3999816179	Sum of GTIs [s]
			ontime7	4950.3999816179	Sum of GTIs [s]
			l1events	314590	Number of level 1 events

### 2.1.4 Events

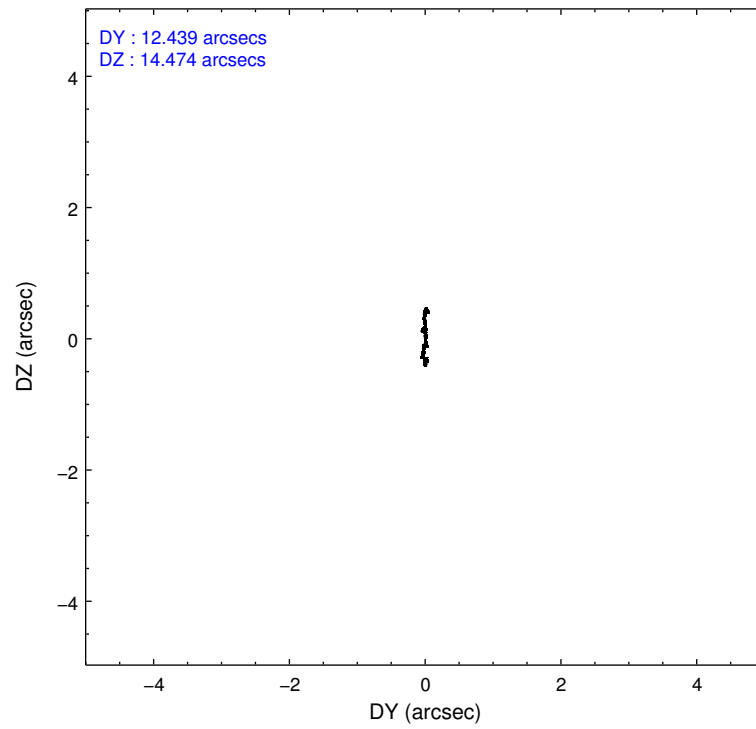
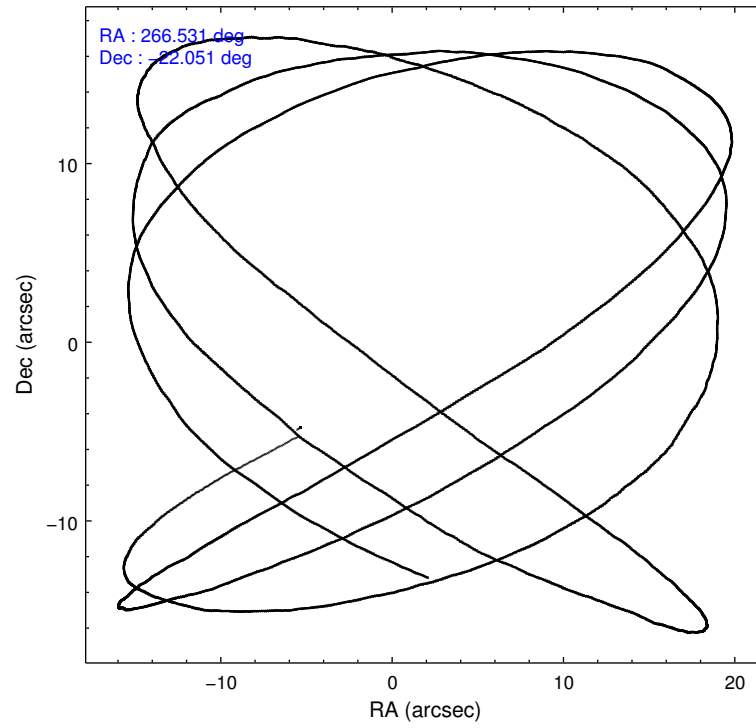
	ccd 0	ccd 1	ccd 2	ccd 3	ccd 6	ccd 7		ccd 0	ccd 1	ccd 2	ccd 3	ccd 6	ccd 7
level 1 events	44115	47772	48994	50196	52889	70624	grade 0 events	2862	2864	2795	2972	2540	2489
rejected events	37718	40811	42770	43734	46496	41292		6%	5%	5%	5%	4%	3%
rejected %	85%	85%	87%	87%	87%	58%	grade 1 events	28	21	32	31	32	66
								0%	0%	0%	0%	0%	0%
							grade 2 events	1389	1602	1336	1240	1432	6119
								3%	3%	2%	2%	2%	8%
							grade 3 events	548	621	565	608	605	2435
								1%	1%	1%	1%	1%	3%
							grade 4 events	527	635	519	576	521	2363
								1%	1%	1%	1%	0%	3%
							grade 5 events	2082	2269	2061	2477	2468	6541
								4%	4%	4%	4%	4%	9%
							grade 6 events	1078	1245	1013	1076	1303	15962
								2%	2%	2%	2%	2%	22%
							grade 7 events	35601	38515	40673	41216	43988	34649
								80%	80%	83%	82%	83%	49%

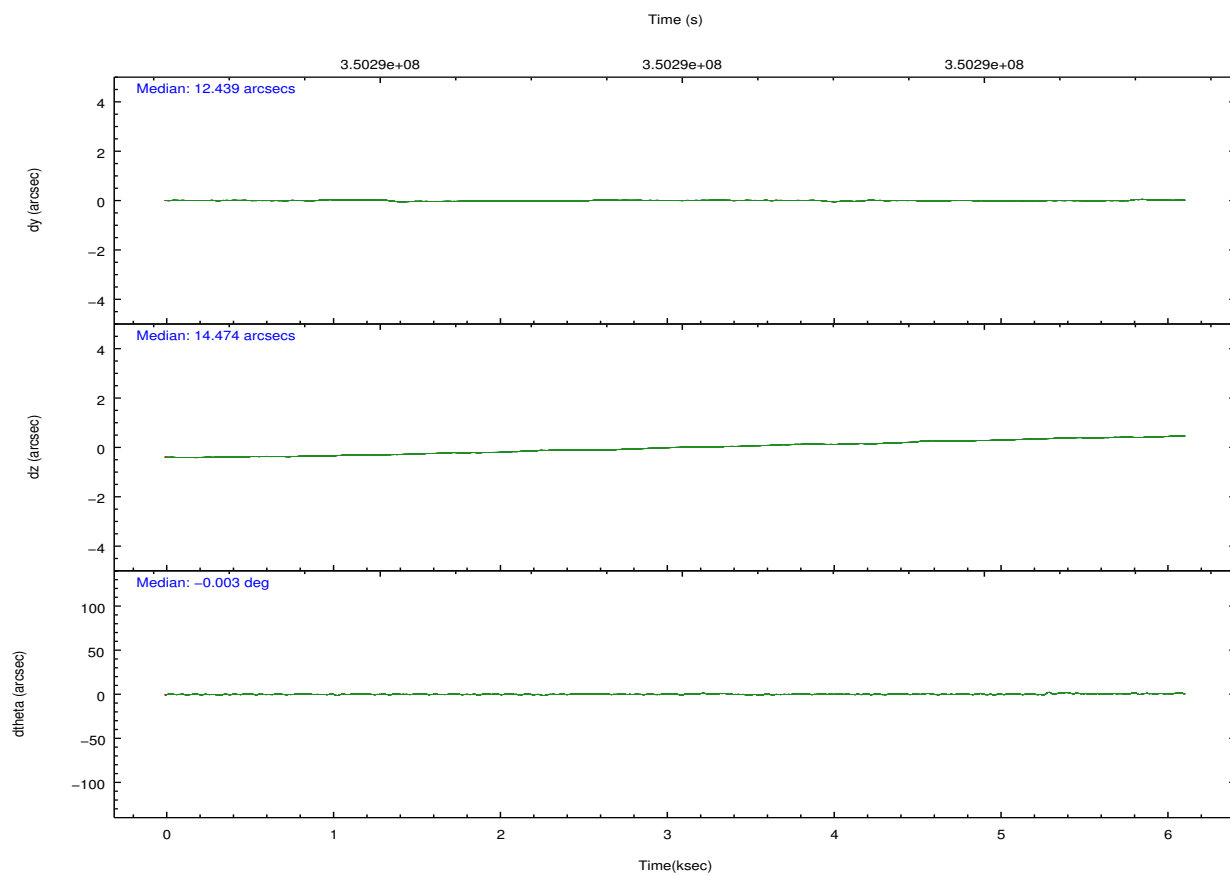
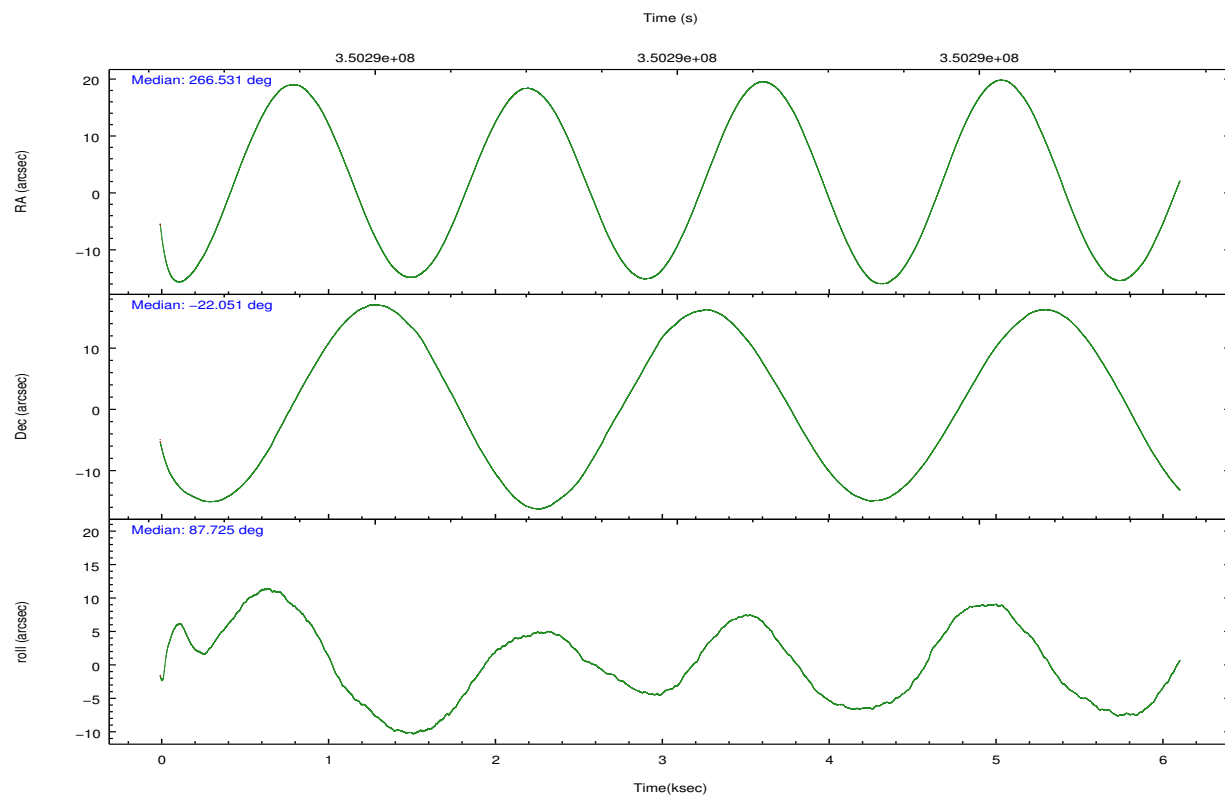


## 2.2 Compared Parameters

Parameter	Planned	Actual	Parameter	Planned	Actual
Instrument	ACIS	ACIS	Obspar format version number	7	7
Detector	ACIS-012367	ACIS-012367	Obspar file type	PREDICTED	ACTUAL
Grating	NONE	NONE	Obspar update status	NONE	UPDATED
Data mode	FAINT	FAINT	CCD I0 on	Y	Y
Observation mode	POINTING	POINTING	CCD I1 on	Y	Y
[deg] Pointing RA	266.544987	266.5308392533987	CCD I2 on	Y	Y
[deg] Pointing Dec	-22.075371	-22.05113650168431	CCD I3 on	Y	Y
[deg] Pointing Roll	87.528237	87.73157305870936	CCD S0 on	N	N
[mm] SIM focus pos	-0.782348	-0.7809083437167272	CCD S1 on	N	N
[mm] SIM defocus	0	0.001439871863259334	CCD S2 on	O1	Y
[mm] SIM translation stage pos	-233.592463	-233.5874344608287	CCD S3 on	O2	Y
[mm] SIM translation stage offset	0	-0.005018542100998502	CCD S4 on	N	N
[s] Observation start time (MET)	350285999.184000	350283712.79005	CCD S5 on	N	N
Observation start date	2009-02-06T05:38:53	2009-02-06T05:01:52	Number of optional ACIS chips dropped	0	0
[s] Observation end time (MET)	350290999.184000	350291351.09043	On-chip summing requested	N	N
Observation end date	2009-02-06T07:02:13	2009-02-06T07:09:11	Subarray requested	NONE	NONE
Read mode	TIMED	TIMED	Alternating exposures requested	N	N
			[s] Primary exposure time	0.000000	3.2

## 2.3 Aspect



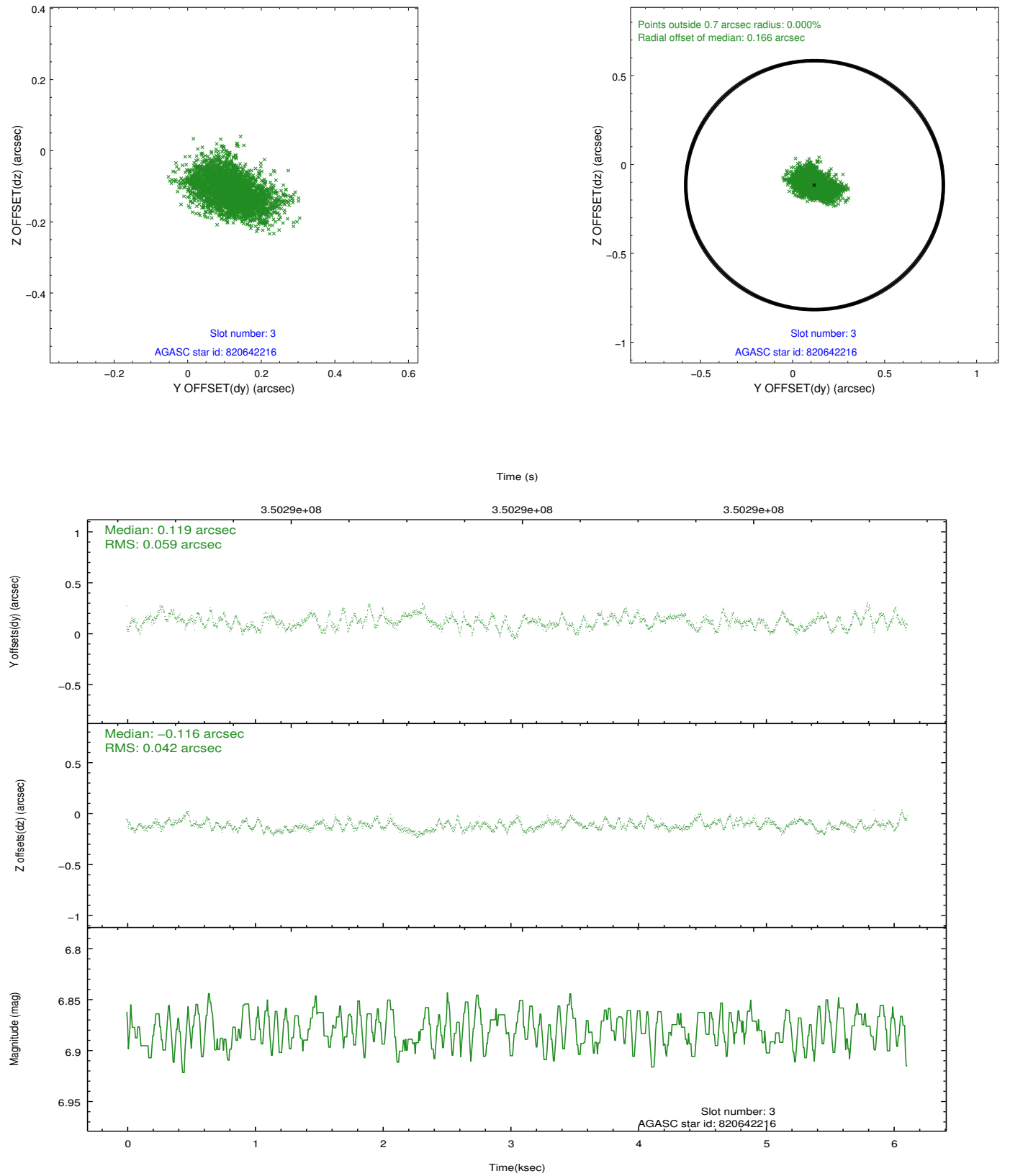


### Slot Statistics

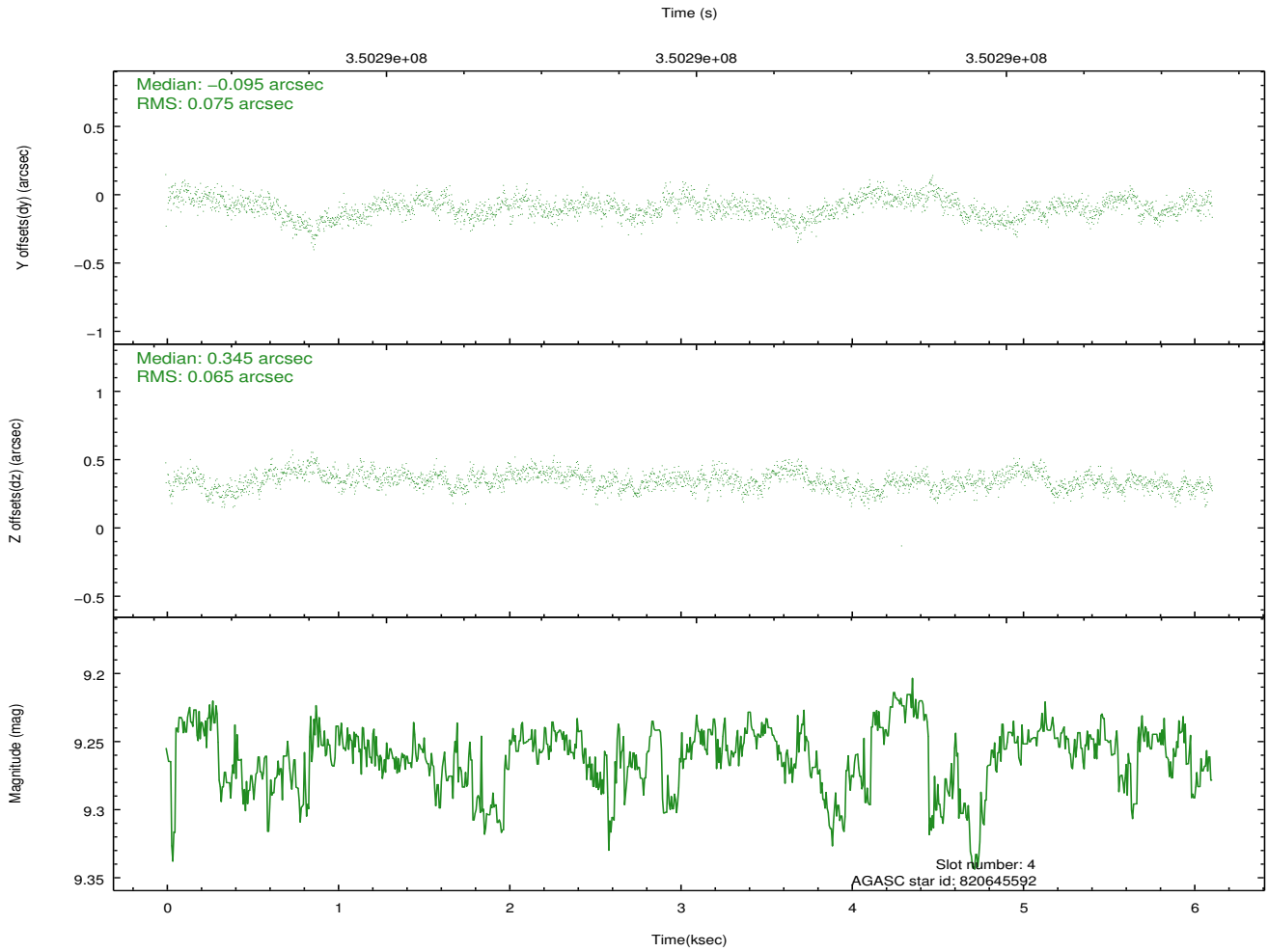
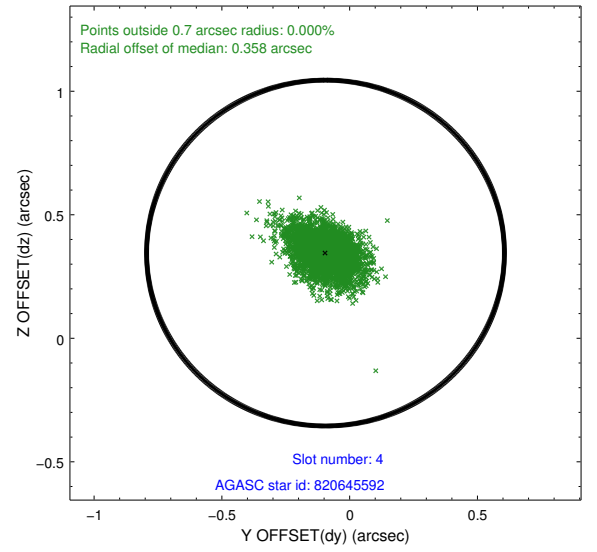
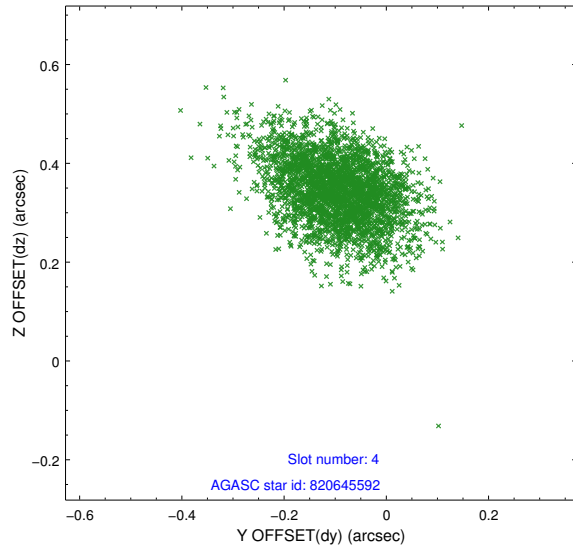
slot	status	id	mag	n_pts	med_dy	med_dz	dr1	dr2	ra	dec	mean_y	mean_z
0	FID	ACIS-I-1	7.03	1490	0.017	0.014	0.022	0.032	0.000000	0.000000	927.12	-838.03
1	FID	ACIS-I-5	7.02	1491	-0.175	0.035	0.011	0.017	0.000000	0.000000	-1820.66	1058.97
2	FID	ACIS-I-6	7.02	1491	0.066	0.020	0.018	0.027	0.000000	0.000000	391.64	1704.57
3	GUIDE	820642216	6.88	2982	0.119	-0.116	0.077	0.126	266.099908	-22.194927	-495.84	1462.46
4	GUIDE	820645592	9.26	2970	-0.095	0.345	0.104	0.176	267.049228	-21.728492	1318.12	-1630.60
5	GUIDE	820661496	8.47	2977	-0.098	-0.124	0.080	0.128	266.088533	-21.731756	1168.16	1577.00
6	GUIDE	820663880	8.99	2979	-0.060	-0.108	0.099	0.158	266.546855	-21.596741	1722.48	67.99
7	GUIDE	894969104	8.82	2981	0.137	0.005	0.078	0.127	266.504164	-22.625167	-1982.16	49.28

## 2.4 Star Slots

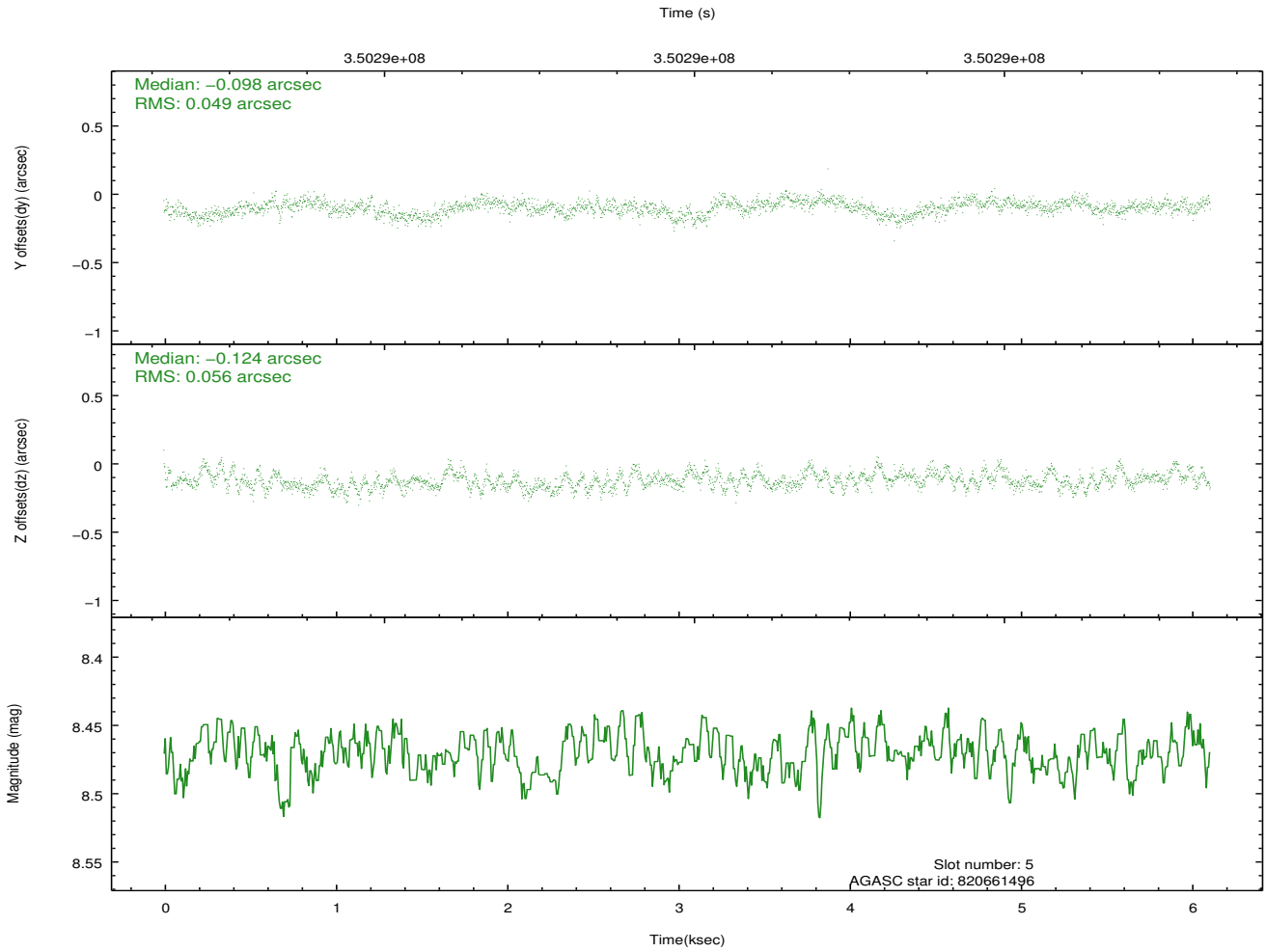
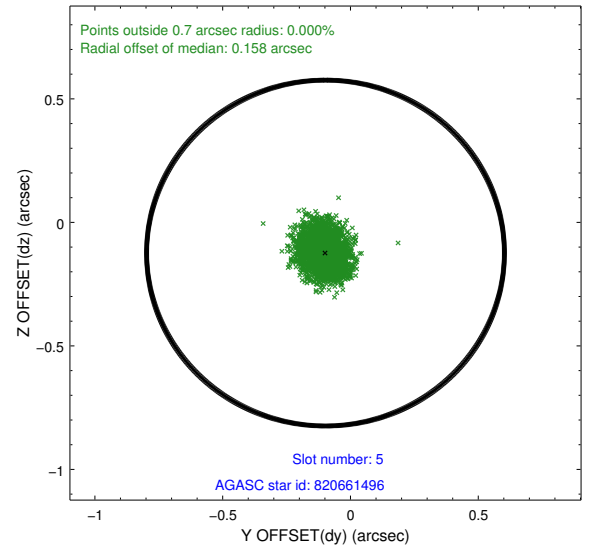
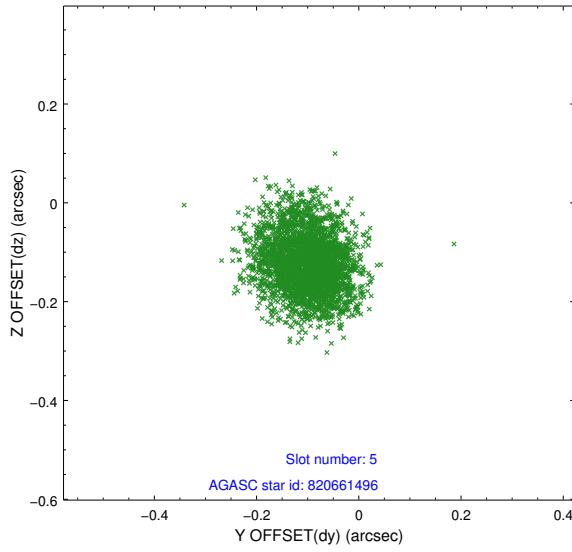
### 2.4.1 Slot 3



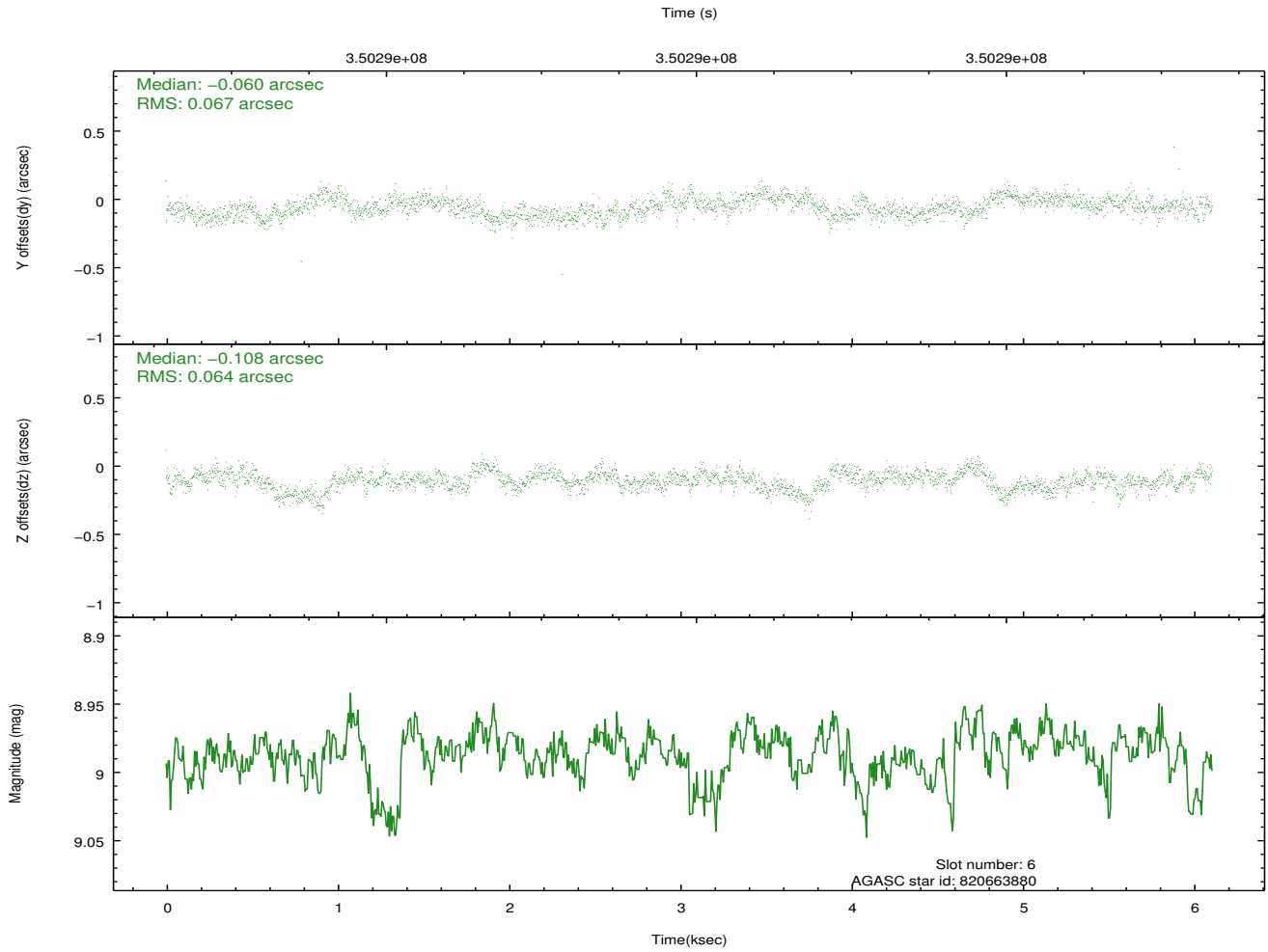
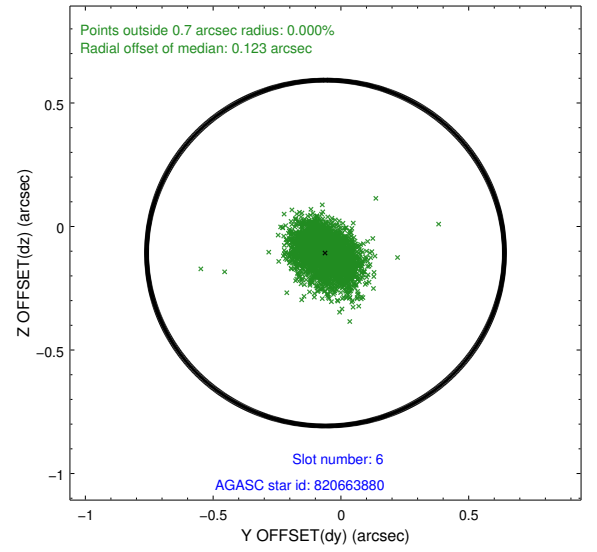
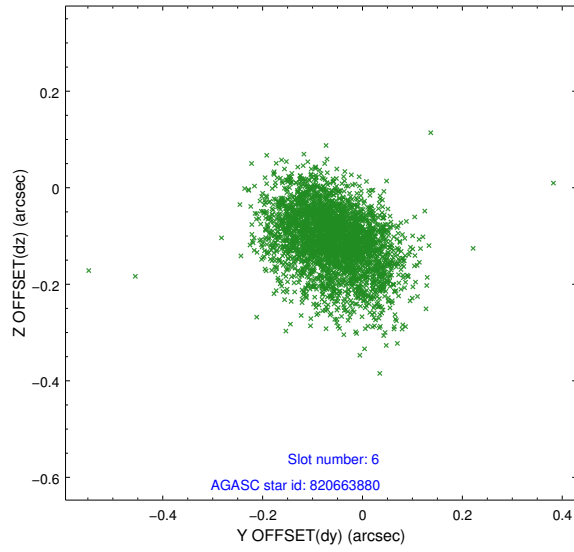
## 2.4.2 Slot 4



### 2.4.3 Slot 5

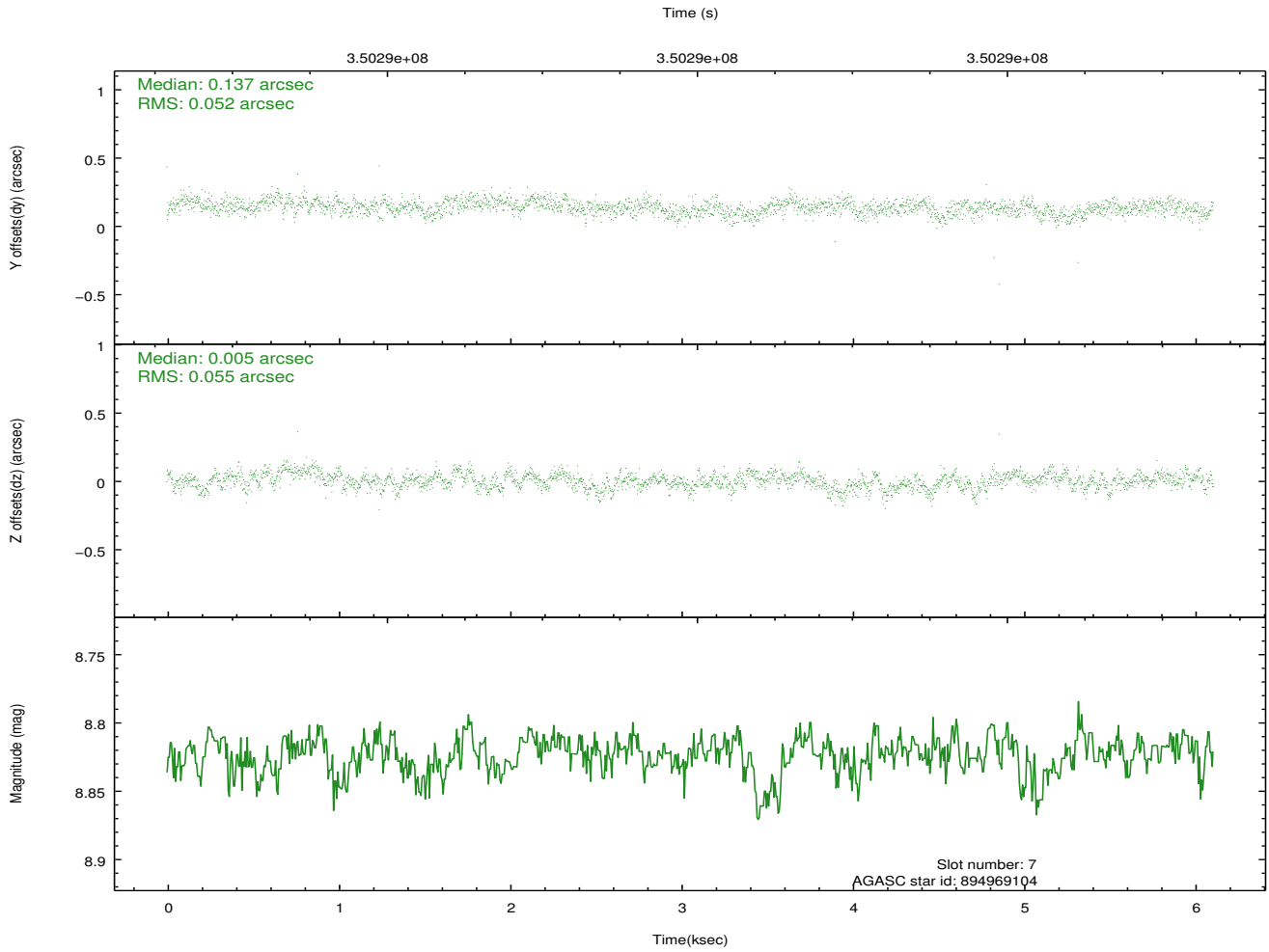
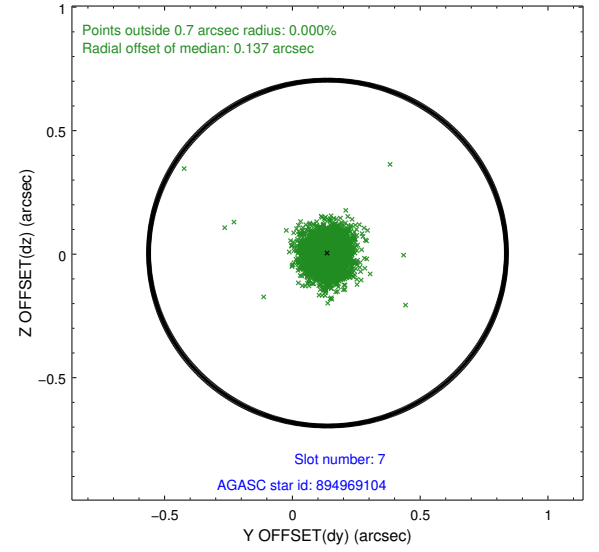
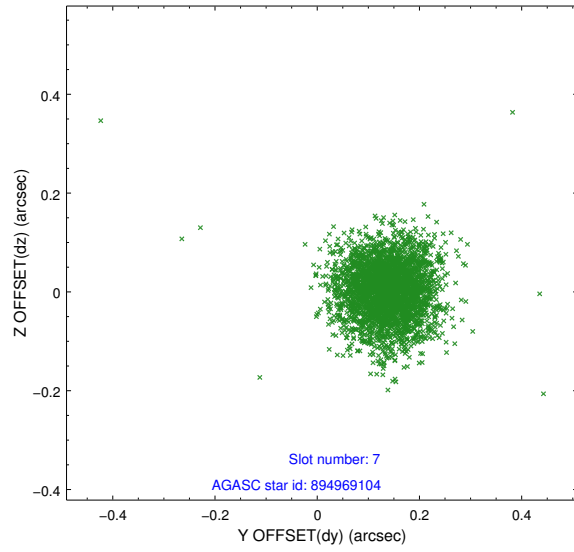


## 2.4.4 Slot 6



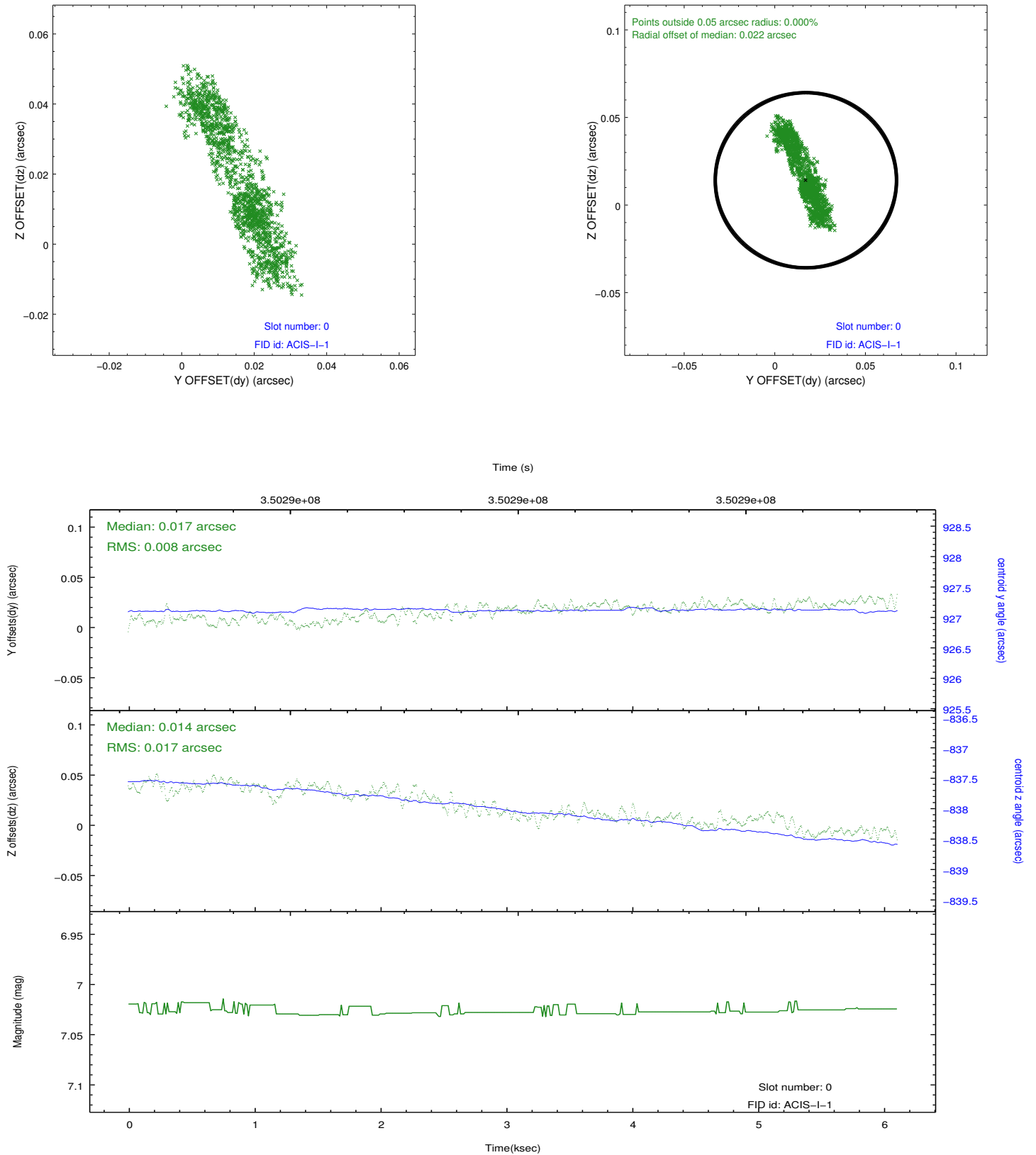


## 2.4.5 Slot 7

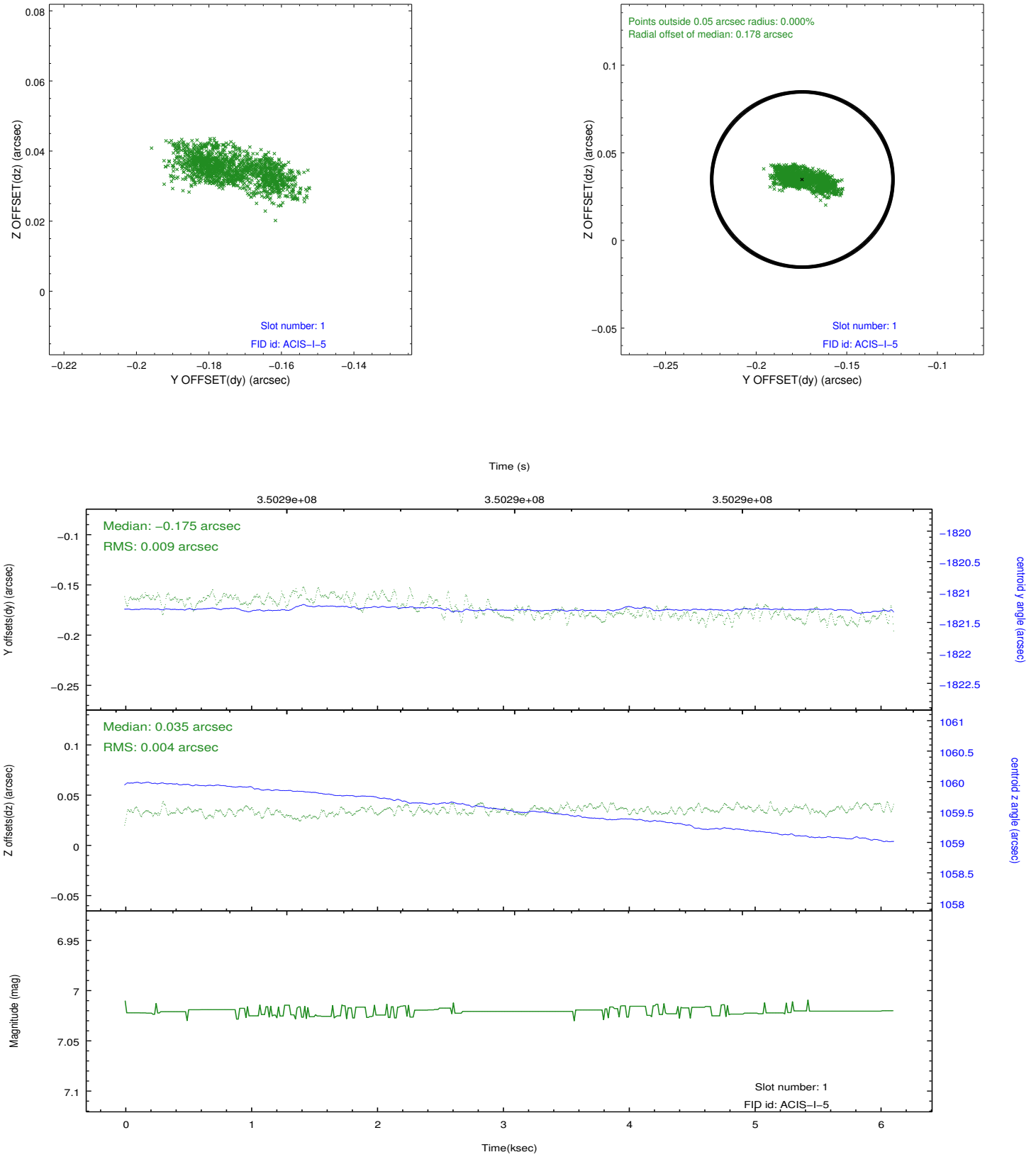


## 2.5 FID Slots

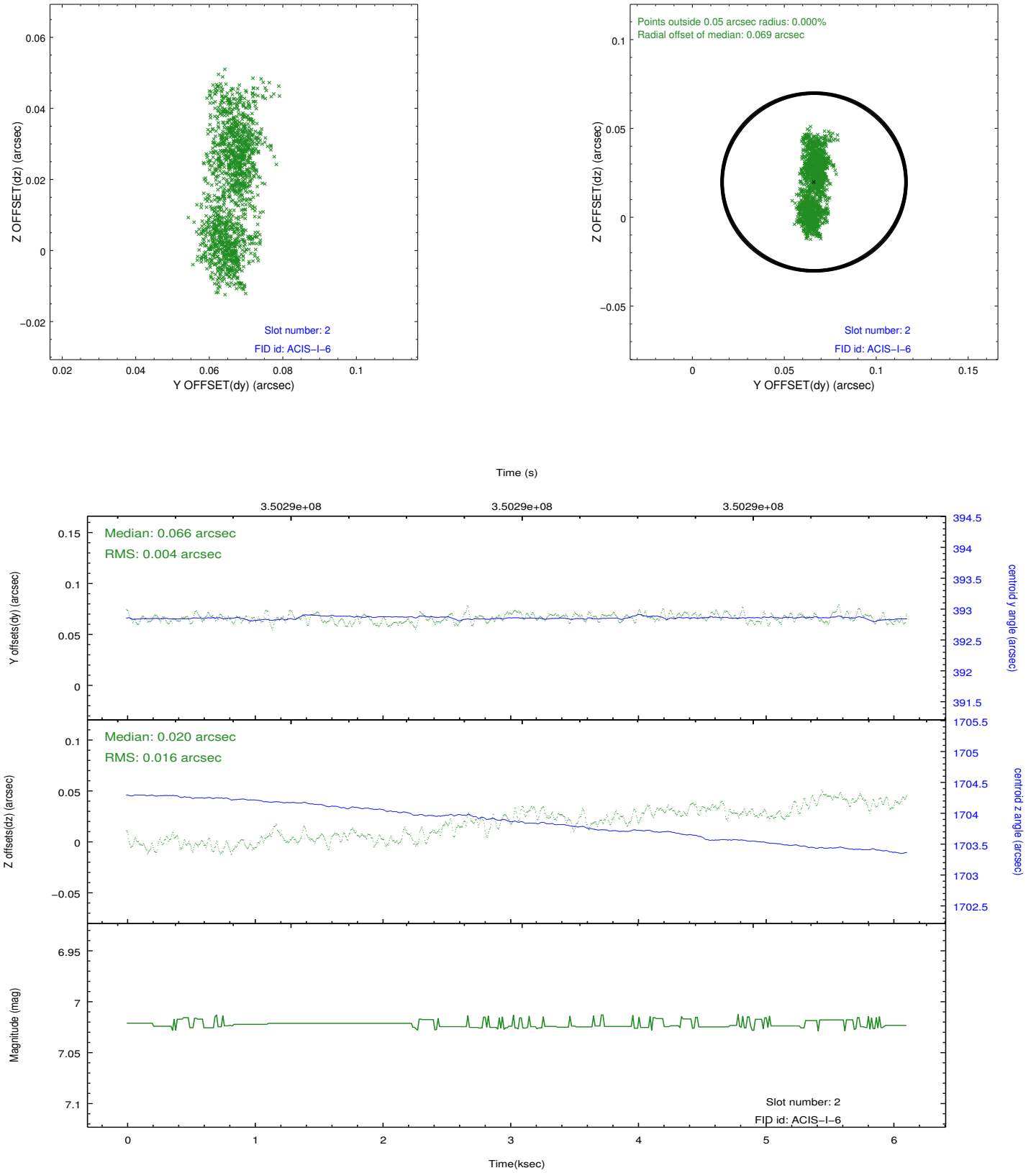
### 2.5.1 Slot 0



## 2.5.2 Slot 1



### 2.5.3 Slot 2



# A Summary

## A.1 Status

V&V Scientist	Jen Lauer
V&V Date (YYYY-MM-DD)	2012.06.06
V&V Edition	1
V&V Disposition and Status	OK
V&V Charge Time	4.95039998

## A.2 Comments

Joint Proposal: NOAO