

V&V Reference Report

L2 ASCDS Version : 8.4.4

Observation 9060 - L2 Version 2
Chandra X-Ray Center

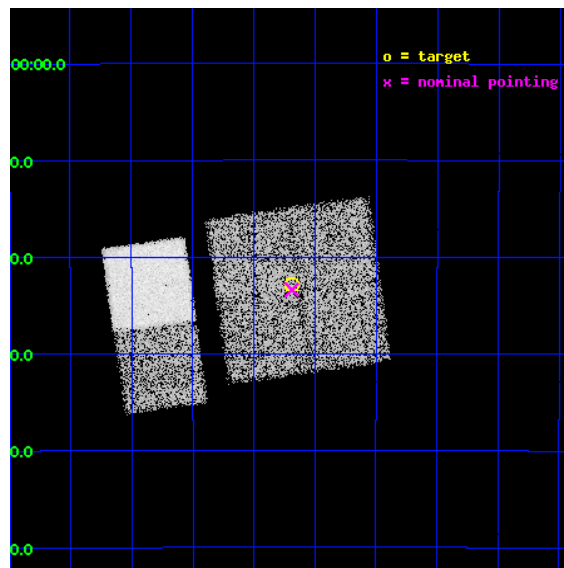
L2 Processing Date : May 23 2012

Contents

1	Front	2
2	OBI	3
2.1	OBI	3
2.1.1	Images	3
2.1.2	Bias	3
2.1.3	Parameters	4
2.1.4	Events	4
2.2	Compared Parameters	5
2.3	Aspect	6
2.4	Star Slots	9
2.4.1	Slot 3	9
2.4.2	Slot 4	10
2.4.3	Slot 5	11
2.4.4	Slot 6	12
2.4.5	Slot 7	13
2.5	FID Slots	14
2.5.1	Slot 0	14
2.5.2	Slot 1	15
2.5.3	Slot 2	16
A	Summary	17
A.1	Status	17
A.2	Comments	17

1 Front

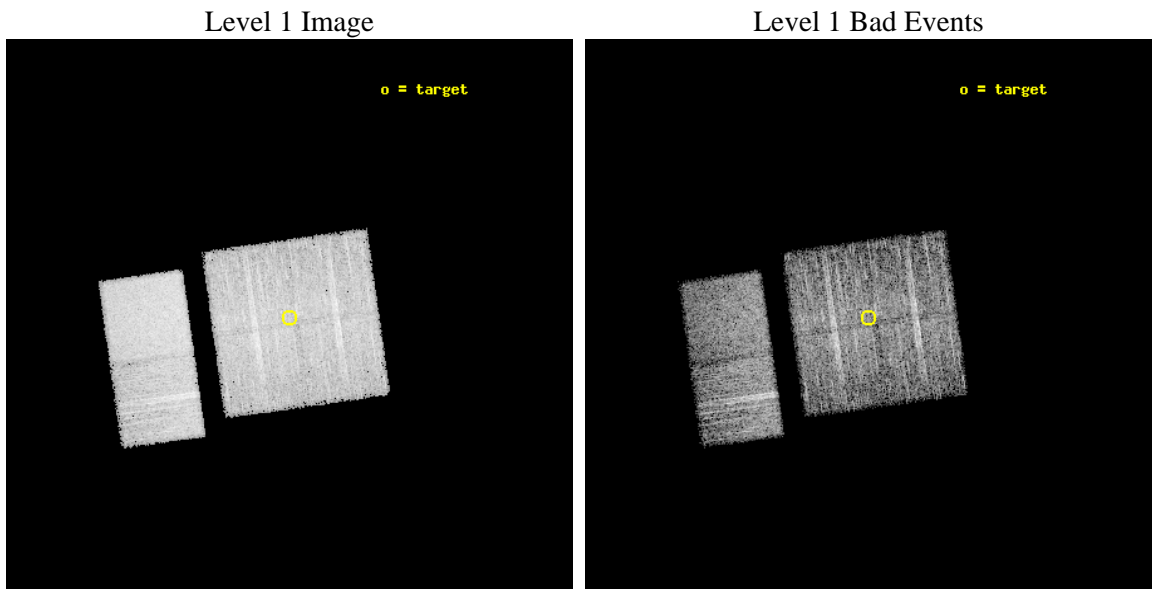
seq_num	400911	Sequence number
obs_id	9060	Observation id
title	Localization and Spectra of INTEGRAL-Selected Sources in the Galactic Plane	Proposal title
observer	Dr. John Tomsick	Principal investigator
object	IGR J17487-3124	Source name
dtcycle	0	
cycle	P	events from which exps? Prim/Second/Both
ra_targ	267.170833	Observer's specified target RA [deg]
dec_targ	-31.381944	Observer's specified target Dec [deg]
ra_nom	267.17212192746	Nominal RA [deg]
dec_nom	-31.38989335096	Nominal Dec [deg]
roll_nom	261.95670912517	Nominal Roll [deg]
revision	2	Processing version of data
ontime	4949.0788908601	Sum of GTIs [s]
livetime	4886.4106739665	Livetime [s]
ontime0	4948.9557708502	Sum of GTIs [s]
ontime1	4948.9968108535	Sum of GTIs [s]
ontime2	4949.0378508568	Sum of GTIs [s]
ontime3	4949.0788908601	Sum of GTIs [s]
ontime6	4949.1609708667	Sum of GTIs [s]
ontime7	4949.1199308634	Sum of GTIs [s]
l2events	55111	Number of level 2 events



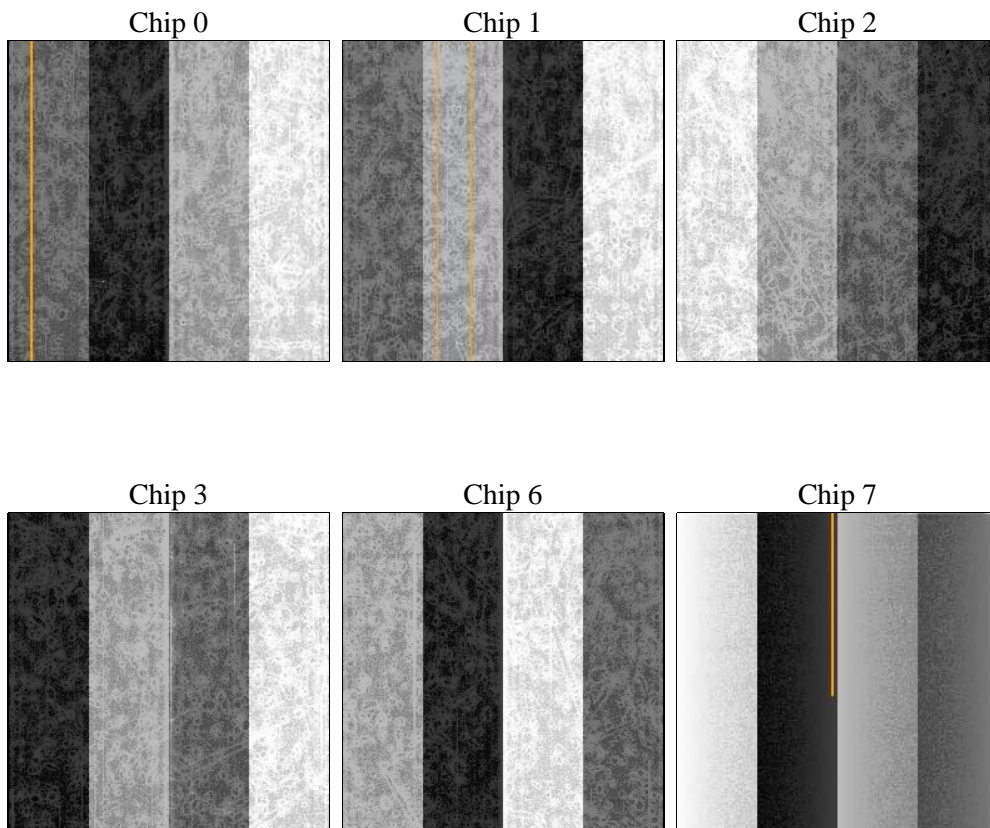
2 OBI

2.1 OBI

2.1.1 Images



2.1.2 Bias



2.1.3 Parameters

obi_num	0	Obi number	sched_exp_time	5000.000000	[s] Scheduled observation exposure time
ascdsver	8.4.4	Processing system revision	ontime	4949.0788908601	Sum of GTIs [s]
caldsver	4.4.9	 	ontime0	4948.9557708502	Sum of GTIs [s]
date	2012-05-23T11:52:36	Date and time of file creation	ontime1	4948.9968108535	Sum of GTIs [s]
revision	2	Processing version of data	ontime2	4949.0378508568	Sum of GTIs [s]
			ontime3	4949.0788908601	Sum of GTIs [s]
			ontime6	4949.1609708667	Sum of GTIs [s]
			ontime7	4949.1199308634	Sum of GTIs [s]
			l1events	300976	Number of level 1 events

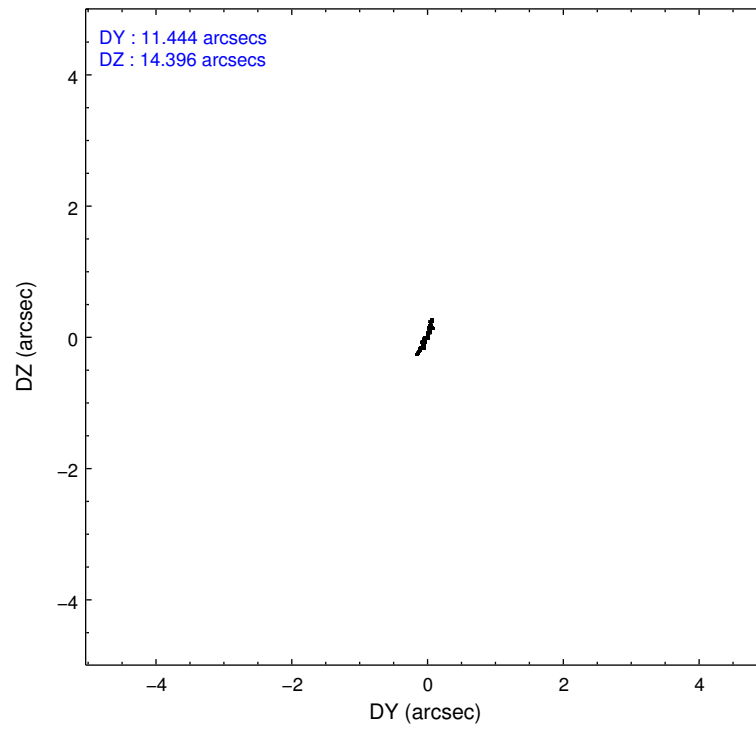
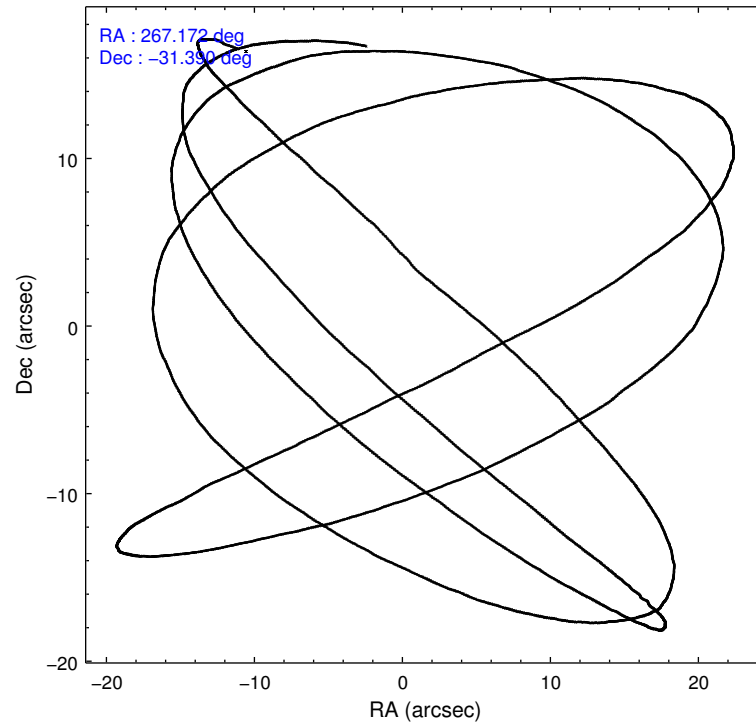
2.1.4 Events

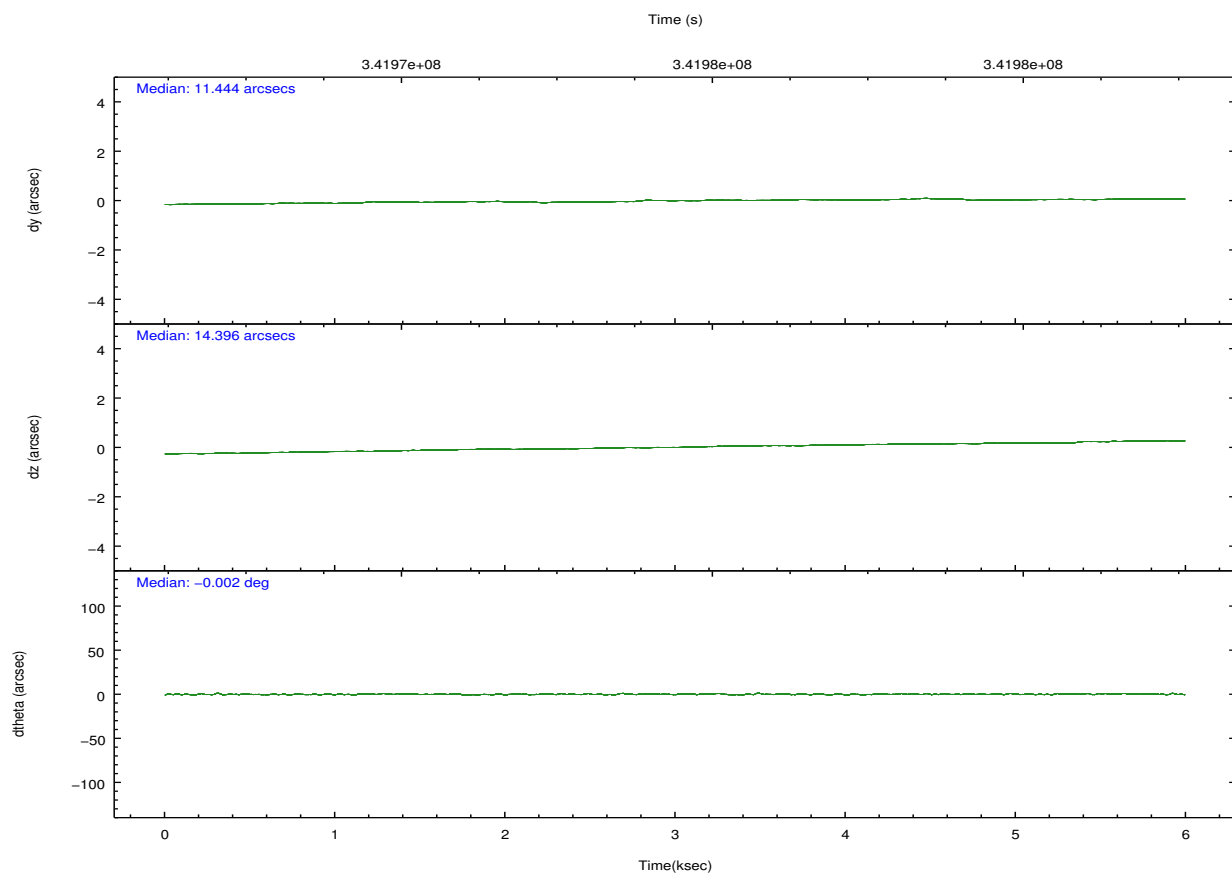
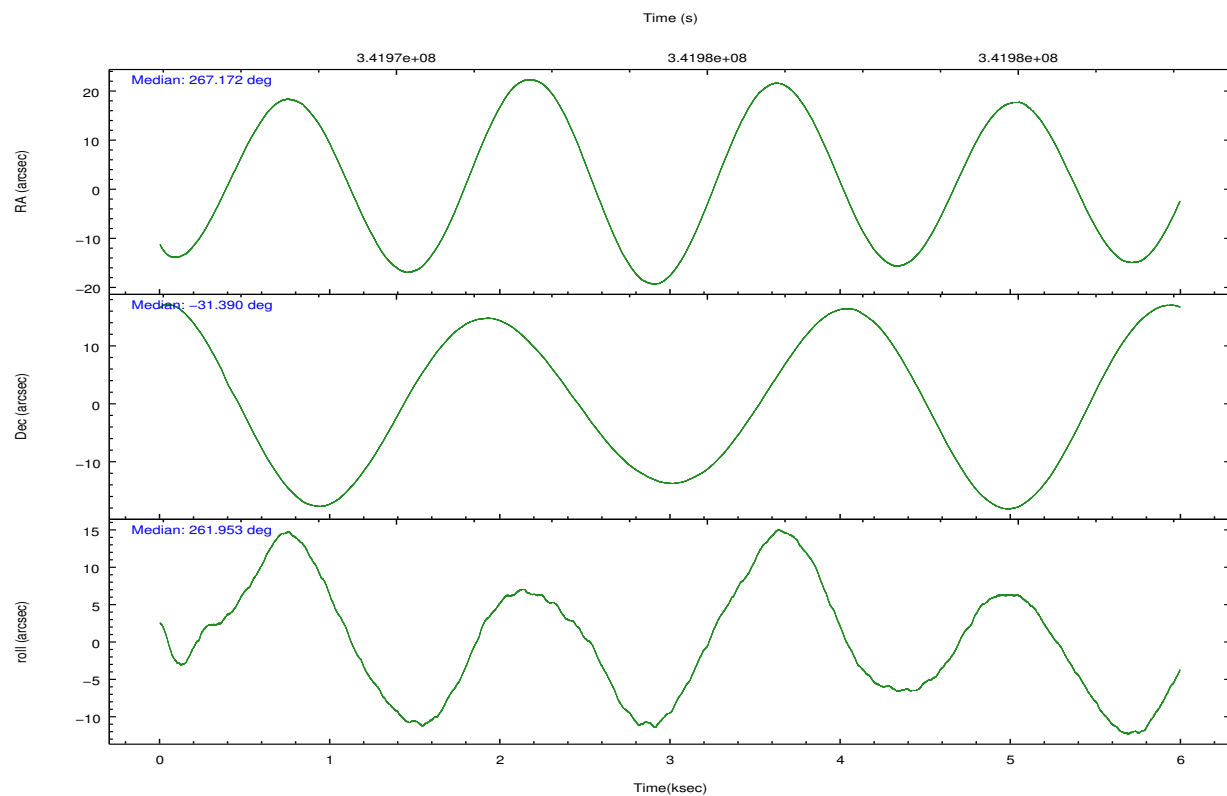
	ccd 0	ccd 1	ccd 2	ccd 3	ccd 6	ccd 7		ccd 0	ccd 1	ccd 2	ccd 3	ccd 6	ccd 7
level 1 events	44603	44855	45740	47584	50522	67672	grade 0 events	2798	2553	2815	2865	2329	2467
rejected events	38226	38367	39571	41284	44428	39310		6%	5%	6%	6%	4%	3%
rejected %	85%	85%	86%	86%	87%	58%	grade 1 events	29	35	36	40	28	74
								0%	0%	0%	0%	0%	0%
							grade 2 events	1410	1523	1282	1226	1427	5774
								3%	3%	2%	2%	2%	8%
							grade 3 events	563	582	544	607	561	2380
								1%	1%	1%	1%	1%	3%
							grade 4 events	523	600	554	552	545	2292
								1%	1%	1%	1%	1%	3%
							grade 5 events	1991	2179	1939	2297	2480	6473
								4%	4%	4%	4%	4%	9%
							grade 6 events	1089	1235	985	1062	1244	15482
								2%	2%	2%	2%	2%	22%
							grade 7 events	36200	36148	37585	38935	41908	32730
								81%	80%	82%	81%	82%	48%

2.2 Compared Parameters

Parameter	Planned	Actual	Parameter	Planned	Actual
Instrument	ACIS	ACIS	Obspar format version number	7	7
Detector	ACIS-012367	ACIS-012367	Obspar file type	PREDICTED	ACTUAL
Grating	NONE	NONE	Obspar update status	NONE	UPDATED
Data mode	FAINT	FAINT	CCD I0 on	Y	Y
Observation mode	POINTING	POINTING	CCD I1 on	Y	Y
[deg] Pointing RA	267.160190	267.1721219274625	CCD I2 on	Y	Y
[deg] Pointing Dec	-31.364459	-31.38989335096009	CCD I3 on	Y	Y
[deg] Pointing Roll	261.741816	261.9567091251666	CCD S0 on	N	N
[mm] SIM focus pos	-0.782348	-0.7809083437167272	CCD S1 on	N	N
[mm] SIM defocus	0	0.001439871863259334	CCD S2 on	O1	Y
[mm] SIM translation stage pos	-233.592463	-233.5874344608287	CCD S3 on	O2	Y
[mm] SIM translation stage offset	0	-0.005018542100998502	CCD S4 on	N	N
[s] Observation start time (MET)	341973764.184000	341972399.9417	CCD S5 on	N	N
Observation start date	2008-11-02T00:41:39	2008-11-02T00:19:59	Number of optional ACIS chips dropped	0	0
[s] Observation end time (MET)	341978764.184000	341978933.80452	On-chip summing requested	N	N
Observation end date	2008-11-02T02:04:59	2008-11-02T02:08:53	Subarray requested	NONE	NONE
Read mode	TIMED	TIMED	Alternating exposures requested	N	N
			[s] Primary exposure time	0.000000	3.2

2.3 Aspect



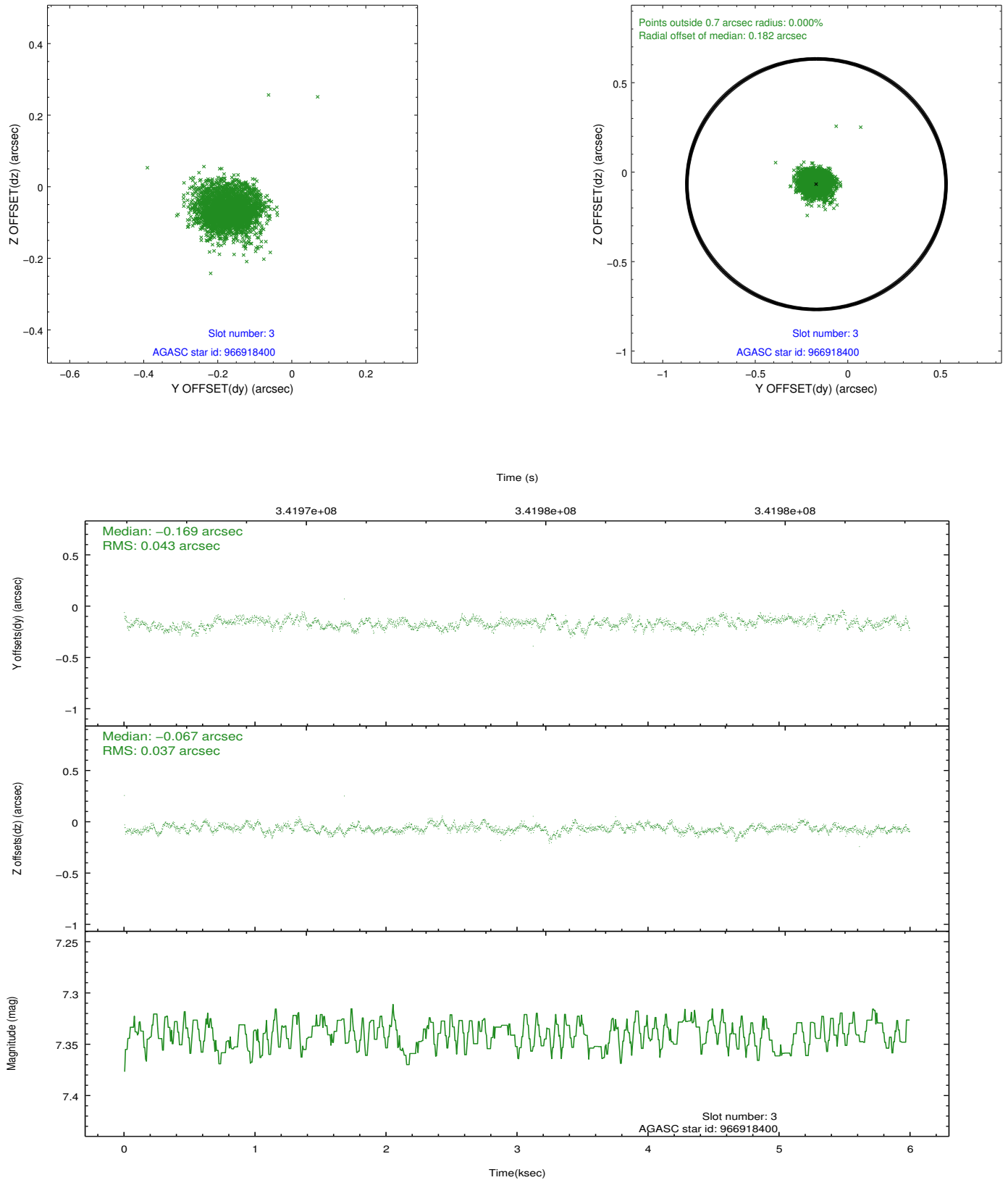


Slot Statistics

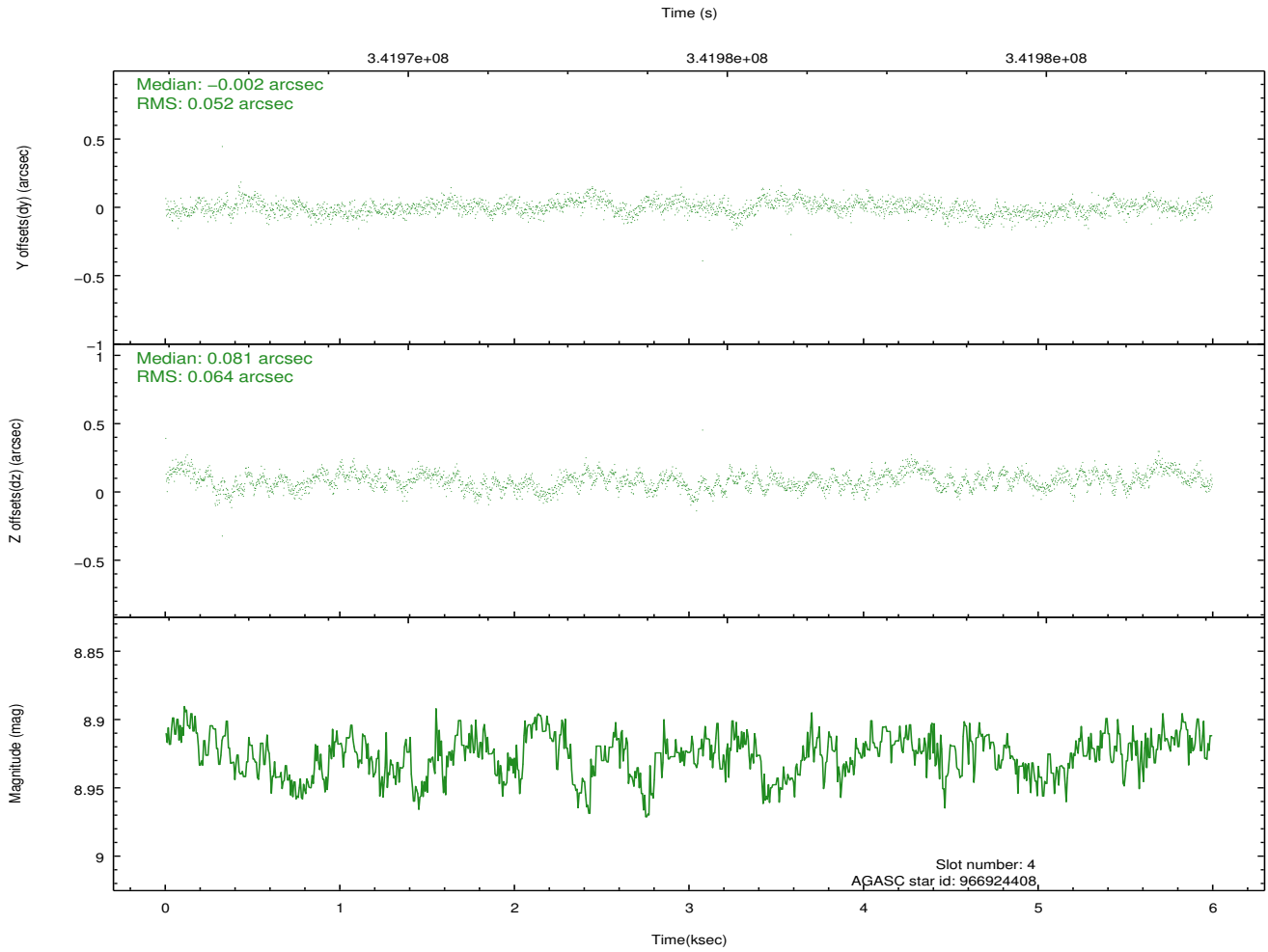
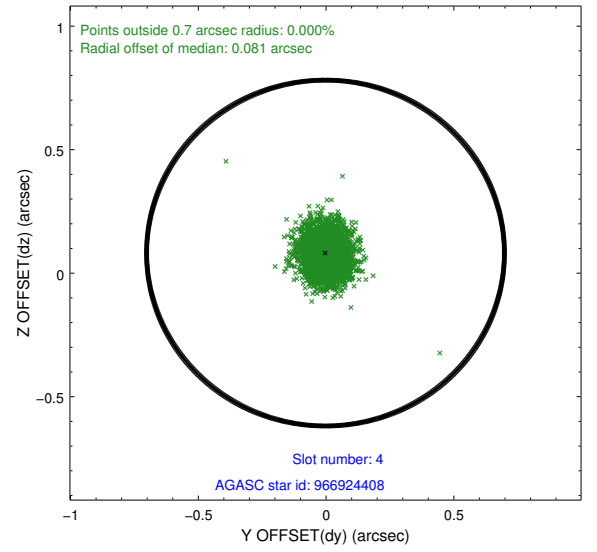
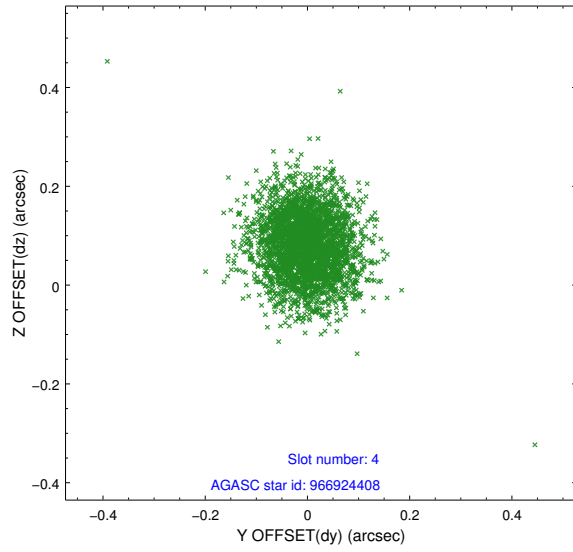
slot	status	id	mag	n_pts	med_dy	med_dz	dr1	dr2	ra	dec	mean_y	mean_z
0	FID	ACIS-I-1	7.06	1462	0.009	0.026	0.007	0.013	0.000000	0.000000	928.15	-837.96
1	FID	ACIS-I-5	7.05	1461	-0.156	0.034	0.006	0.011	0.000000	0.000000	-1819.59	1059.02
2	FID	ACIS-I-6	7.06	1462	0.055	0.010	0.008	0.014	0.000000	0.000000	392.64	1704.64
3	GUIDE	966918400	7.34	2924	-0.169	-0.067	0.060	0.097	267.537101	-30.960086	-1605.86	943.38
4	GUIDE	966924408	8.93	2921	-0.002	0.081	0.086	0.141	266.982893	-30.897884	-1583.47	-782.08
5	GUIDE	967059168	8.44	2925	-0.038	-0.009	0.075	0.116	267.755631	-31.226839	-749.20	1744.08
6	GUIDE	967060832	9.31	2924	0.005	0.063	0.106	0.168	267.800373	-31.675183	830.78	2104.06
7	GUIDE	967451816	9.25	2917	0.202	-0.072	0.095	0.153	267.266669	-31.901374	1867.30	601.49

2.4 Star Slots

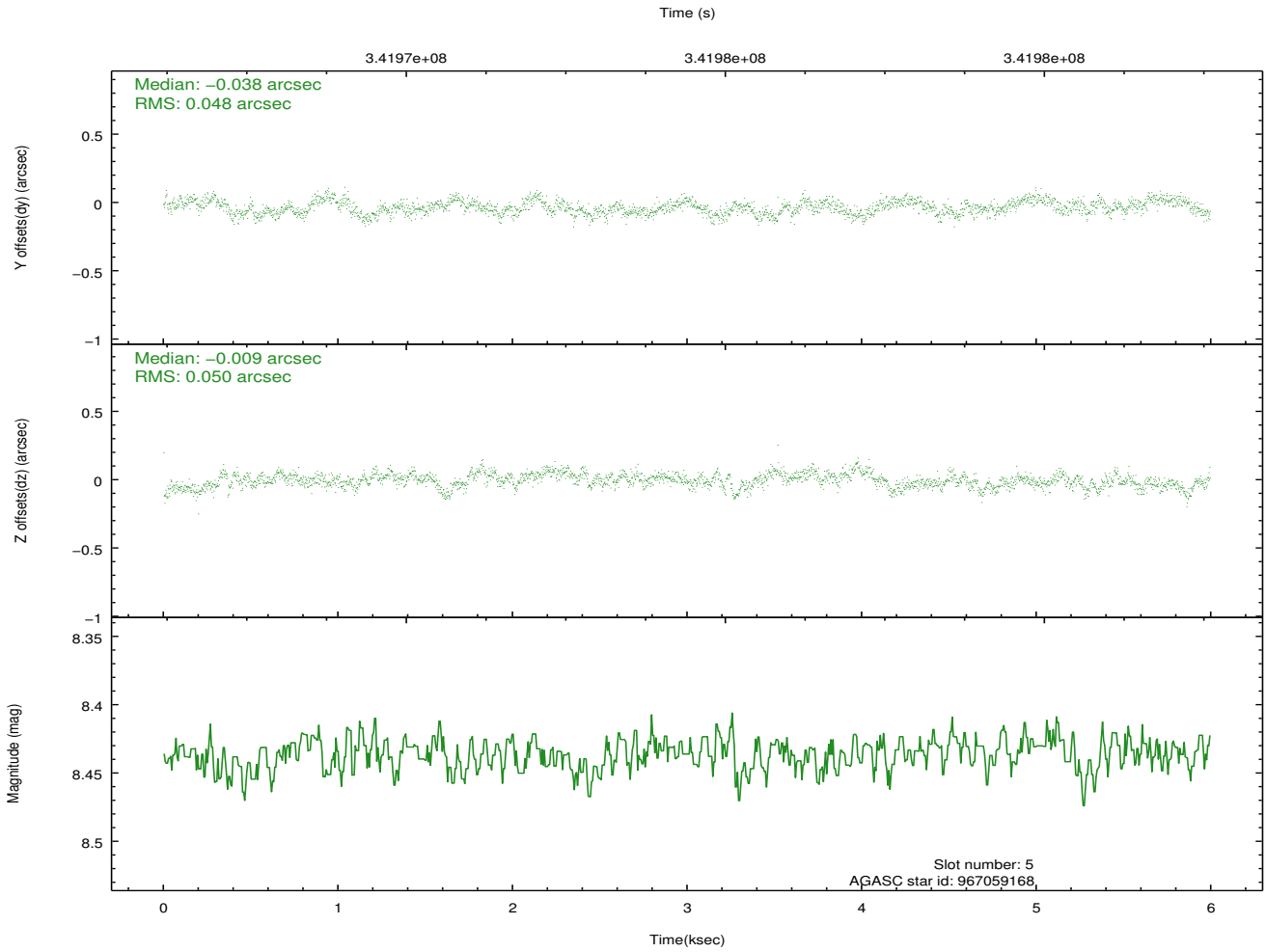
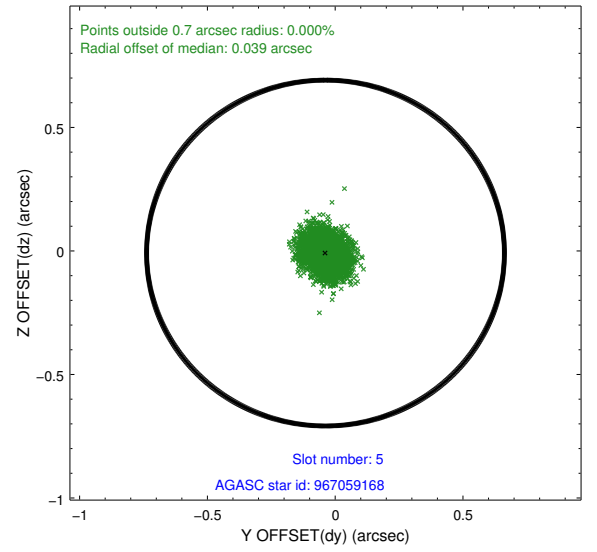
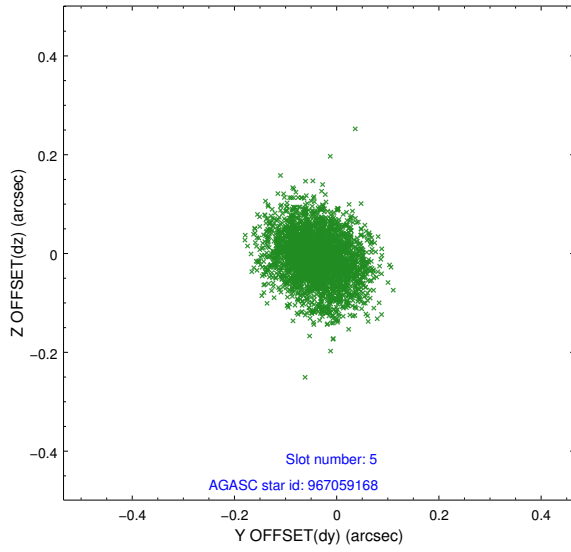
2.4.1 Slot 3



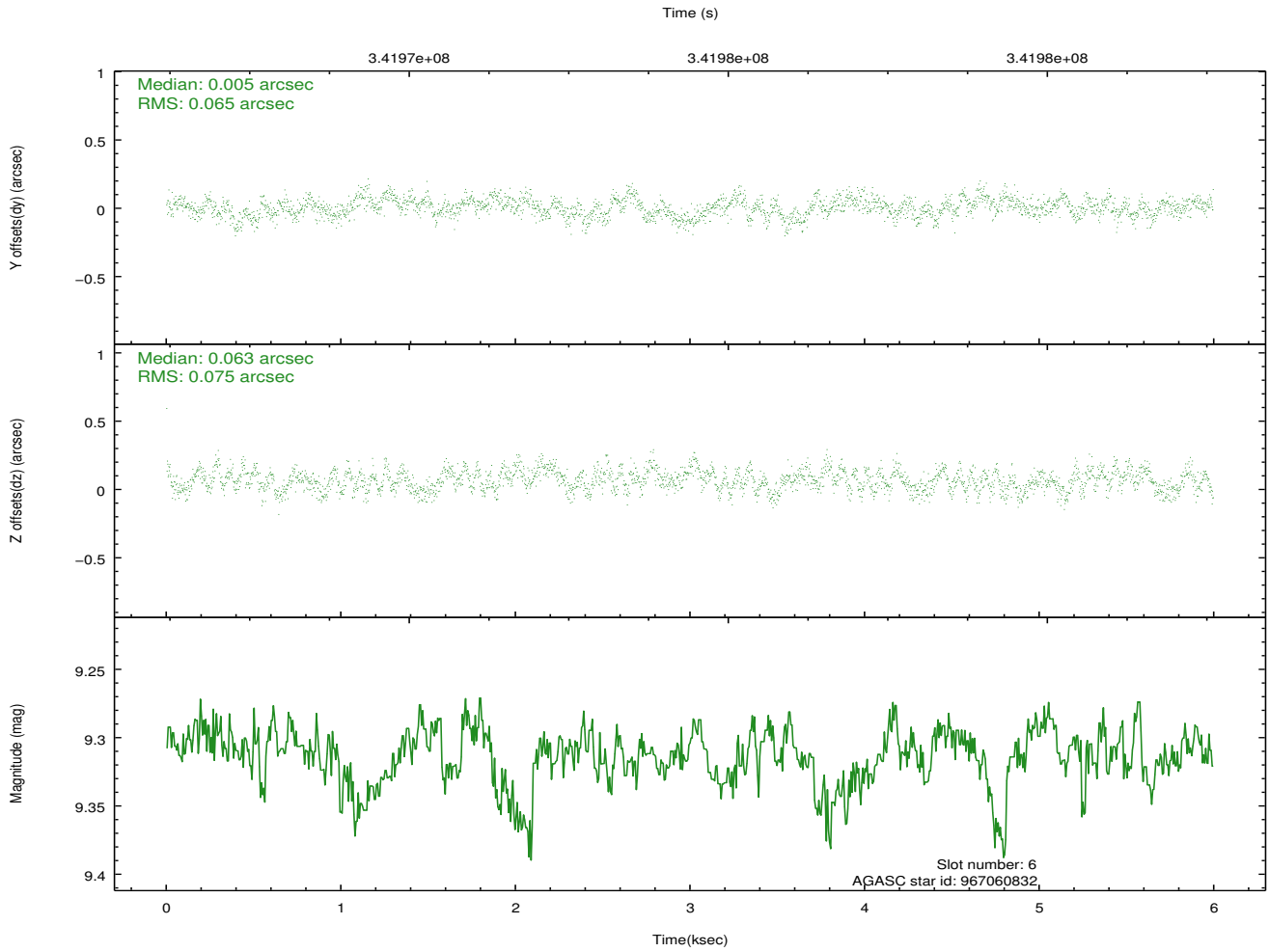
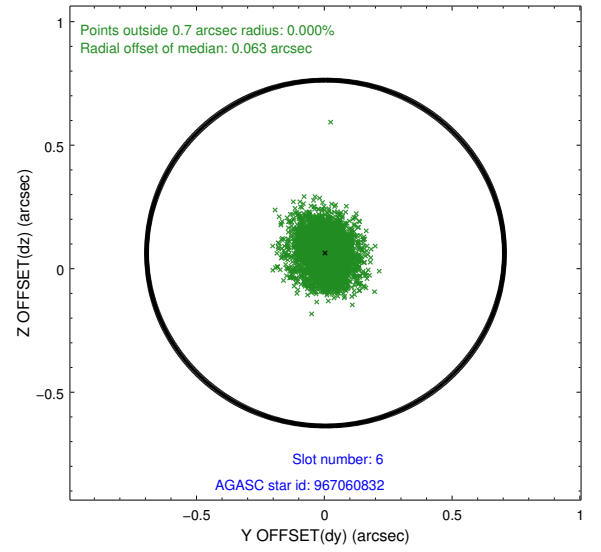
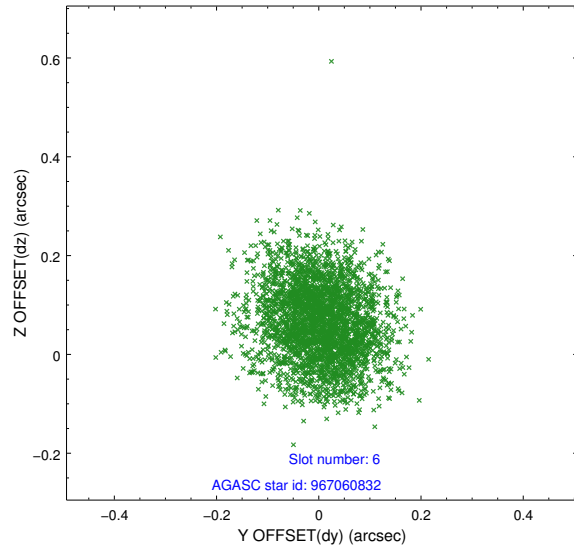
2.4.2 Slot 4



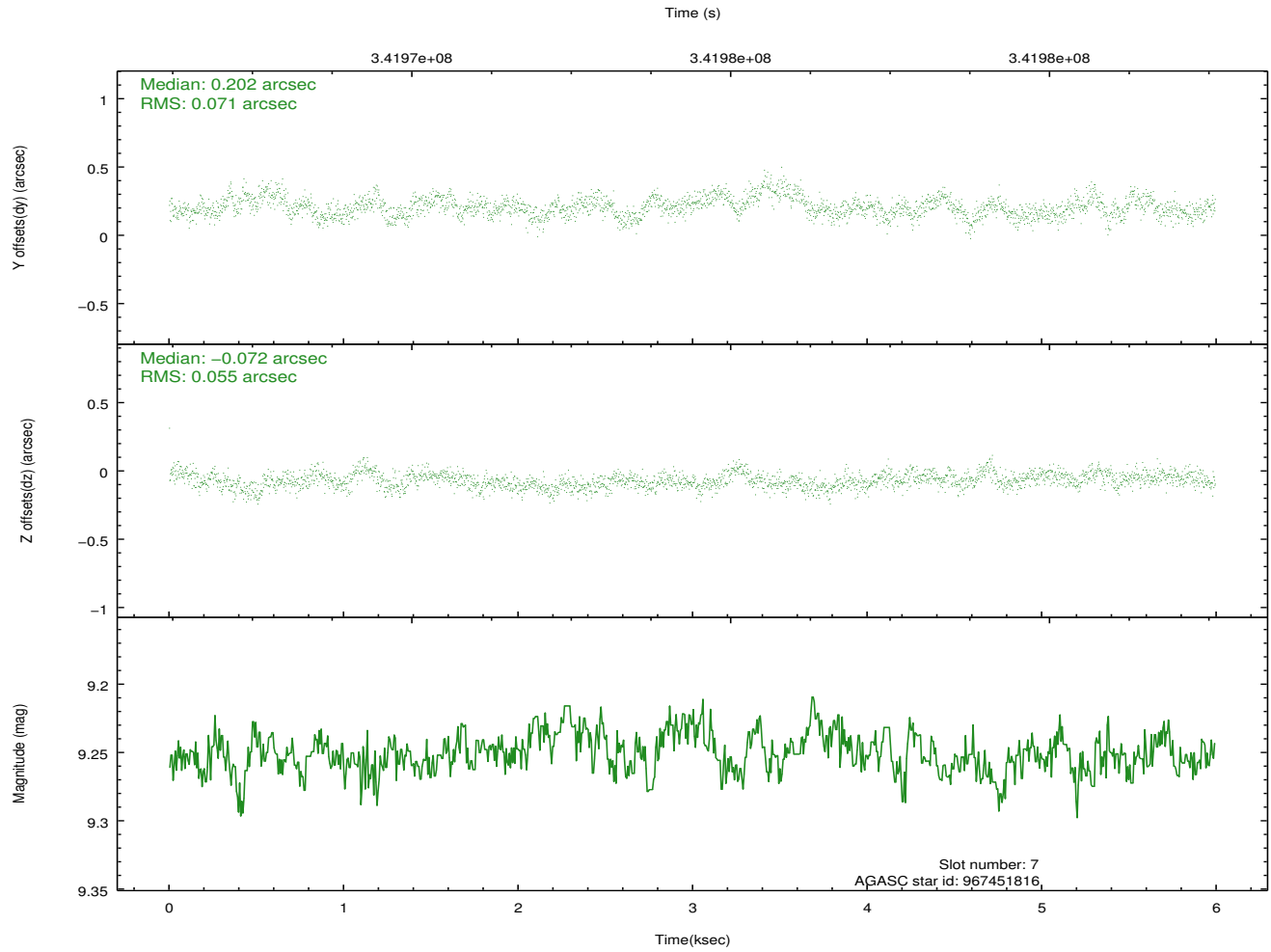
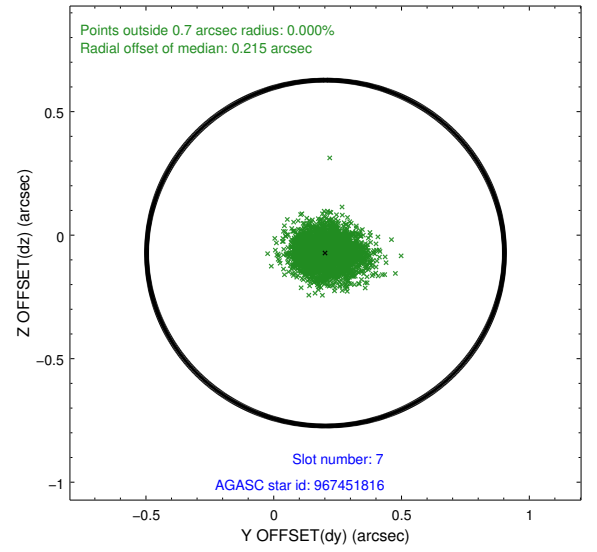
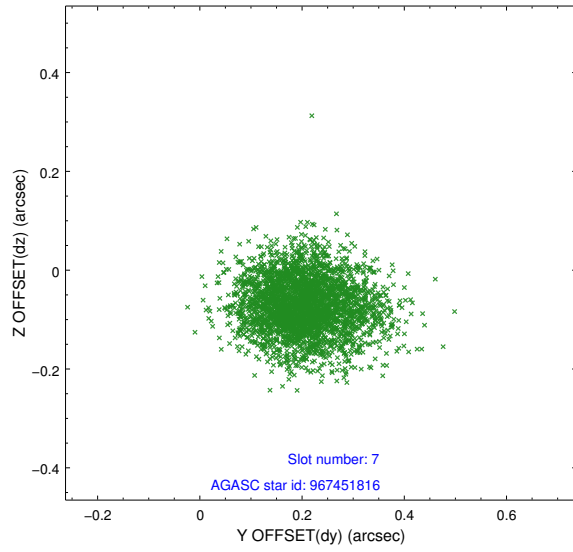
2.4.3 Slot 5



2.4.4 Slot 6

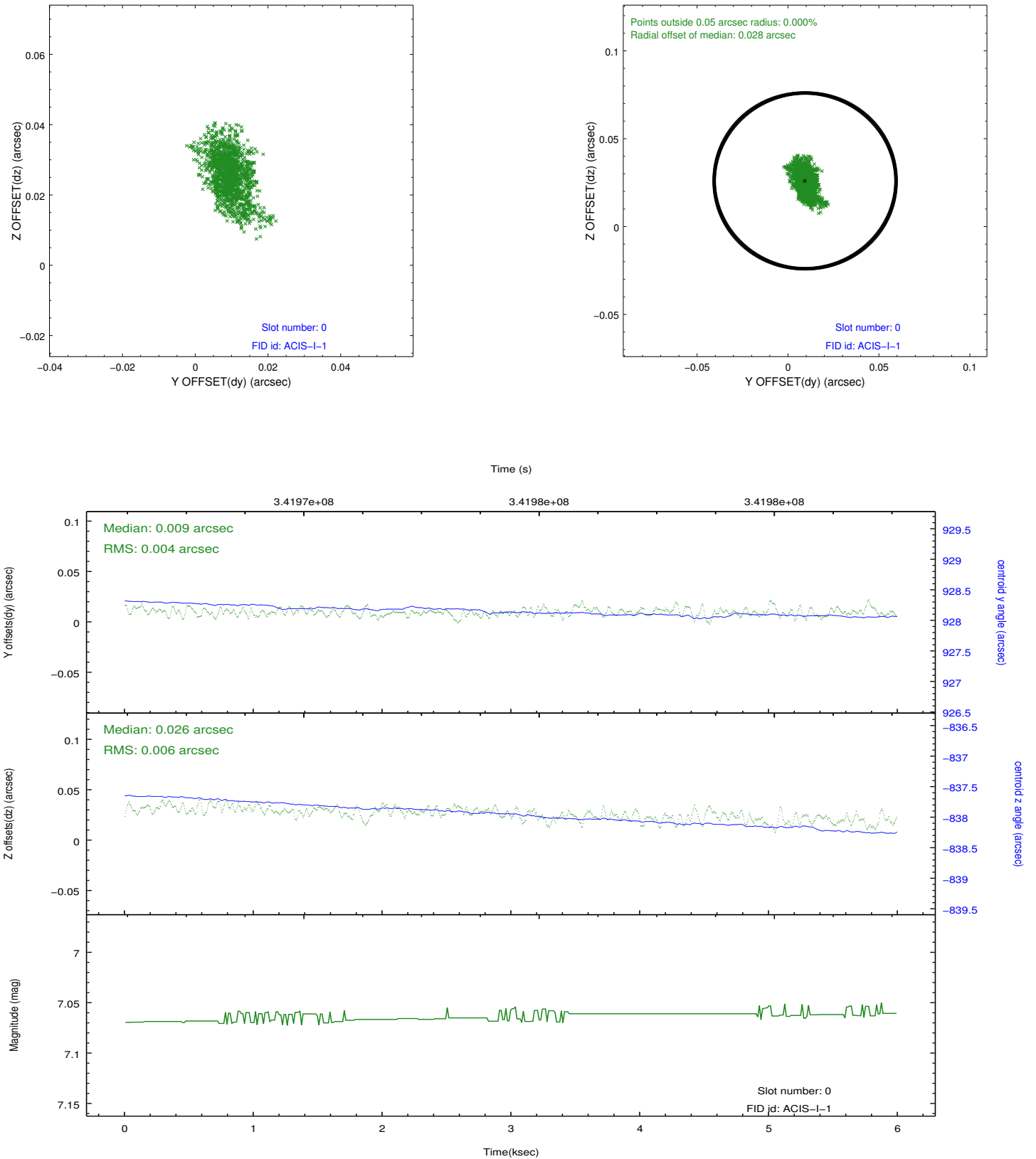


2.4.5 Slot 7

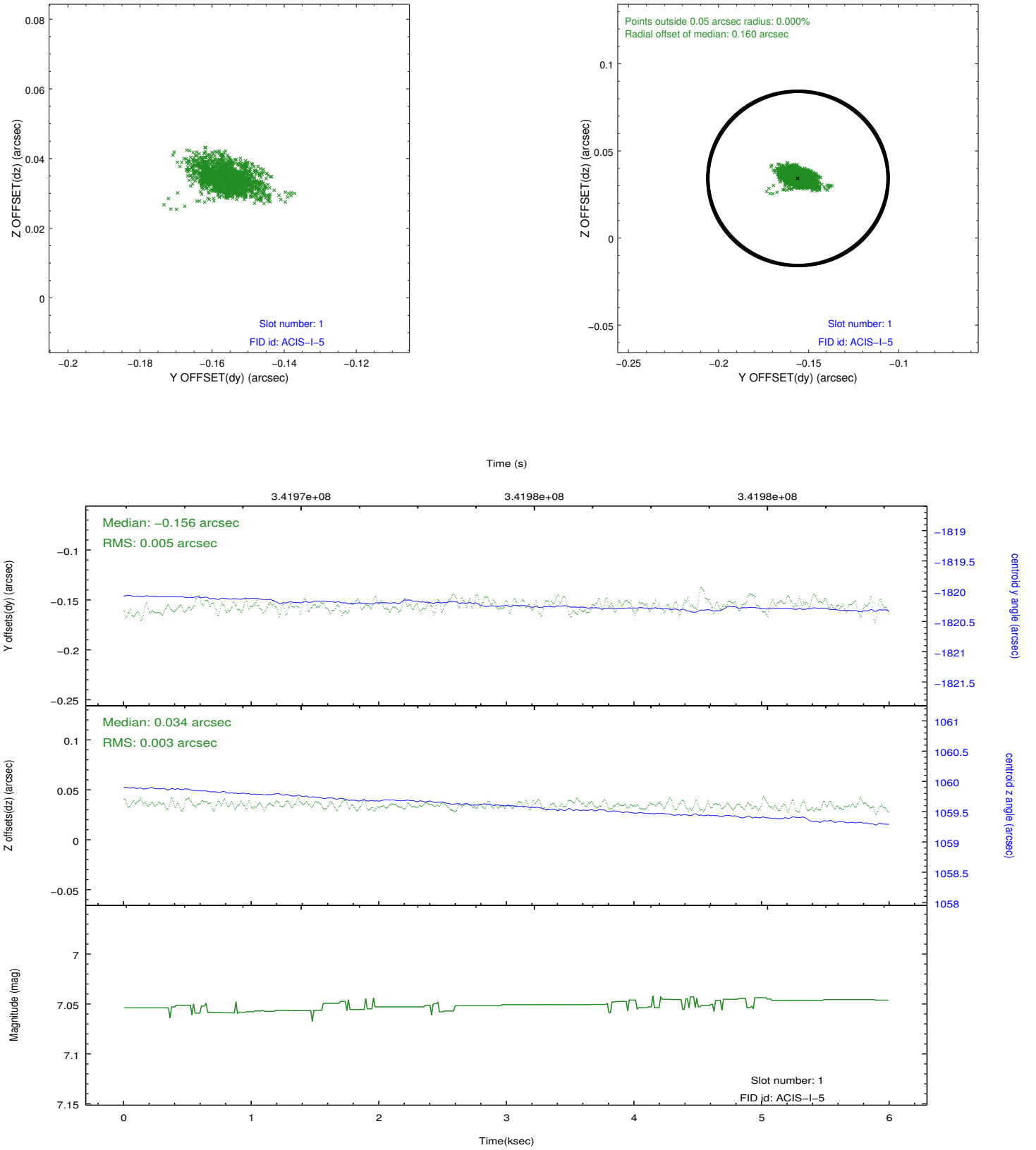


2.5 FID Slots

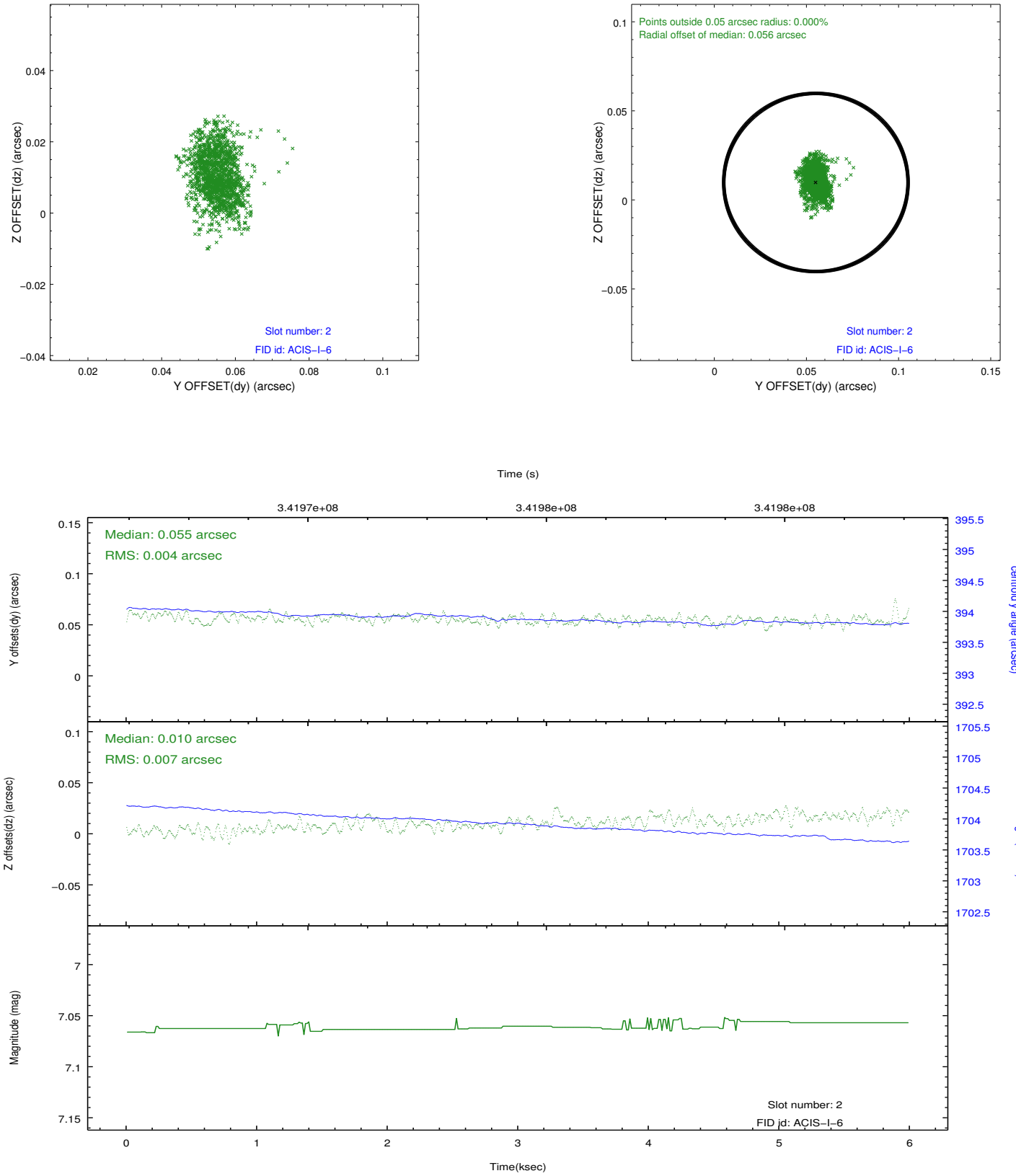
2.5.1 Slot 0



2.5.2 Slot 1



2.5.3 Slot 2



A Summary

A.1 Status

V&V Scientist	Beth Sundheim
V&V Date (YYYY-MM-DD)	2012.05.31
V&V Edition	1
V&V Disposition and Status	OK
V&V Charge Time	4.9503999815583

A.2 Comments

Joint proposal with NOAO.