

# V&V Reference Report

## L2 ASCDS Version : 8.4.4

Observation 9059 - L2 Version 2  
Chandra X-Ray Center

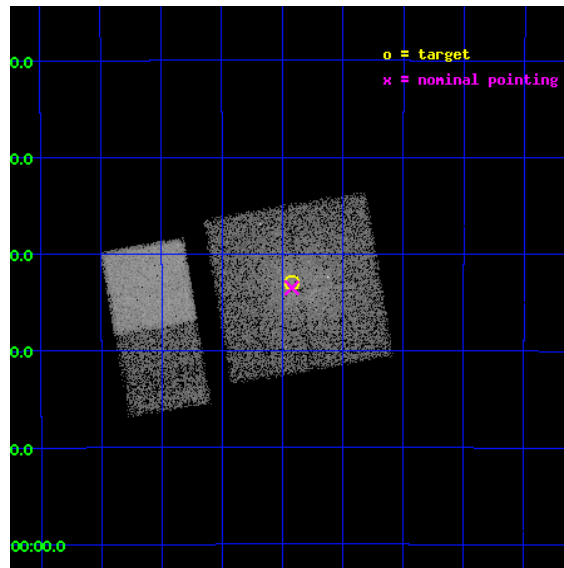
L2 Processing Date : May 23 2012

## Contents

<b>1</b>	<b>Front</b>	<b>2</b>
<b>2</b>	<b>OBI</b>	<b>3</b>
2.1	OBI . . . . .	3
2.1.1	Images . . . . .	3
2.1.2	Bias . . . . .	3
2.1.3	Parameters . . . . .	4
2.1.4	Events . . . . .	4
2.2	Compared Parameters . . . . .	5
2.3	Aspect . . . . .	6
2.4	Star Slots . . . . .	9
2.4.1	Slot 3 . . . . .	9
2.4.2	Slot 4 . . . . .	10
2.4.3	Slot 5 . . . . .	11
2.4.4	Slot 6 . . . . .	12
2.4.5	Slot 7 . . . . .	13
2.5	FID Slots . . . . .	14
2.5.1	Slot 0 . . . . .	14
2.5.2	Slot 1 . . . . .	15
2.5.3	Slot 2 . . . . .	16
<b>A</b>	<b>Summary</b>	<b>17</b>
A.1	Status . . . . .	17
A.2	Comments . . . . .	17

# 1 Front

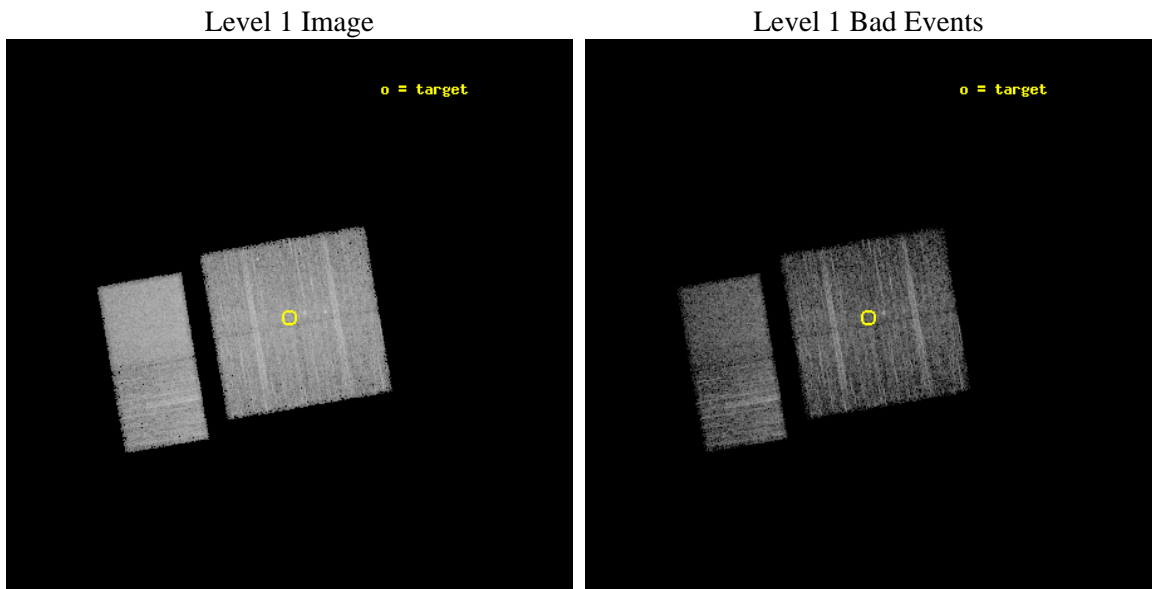
seq_num	400910	Sequence number
obs_id	9059	Observation id
title	Localization and Spectra of INTEGRAL-Selected Sources in the Galactic Plane	Proposal title
observer	Dr. John Tomsick	Principal investigator
object	IGR J17448-3232	Source name
dtcycle	0	&#160
cycle	P	events from which exps? Prim/Second/Both
ra_targ	266.229167	Observer's specified target RA [deg]
dec_targ	-32.55	Observer's specified target Dec [deg]
ra_nom	266.23022193942	Nominal RA [deg]
dec_nom	-32.558508916017	Nominal Dec [deg]
roll_nom	260.27791091093	Nominal Roll [deg]
revision	2	Processing version of data
ontime	4751.999982357	Sum of GTIs [s]
livetime	4691.8272972696	Livetime [s]
ontime0	4751.999982357	Sum of GTIs [s]
ontime1	4748.759041965	Sum of GTIs [s]
ontime2	4751.999982357	Sum of GTIs [s]
ontime3	4751.999982357	Sum of GTIs [s]
ontime6	4751.999982357	Sum of GTIs [s]
ontime7	4751.999982357	Sum of GTIs [s]
l2events	62524	Number of level 2 events



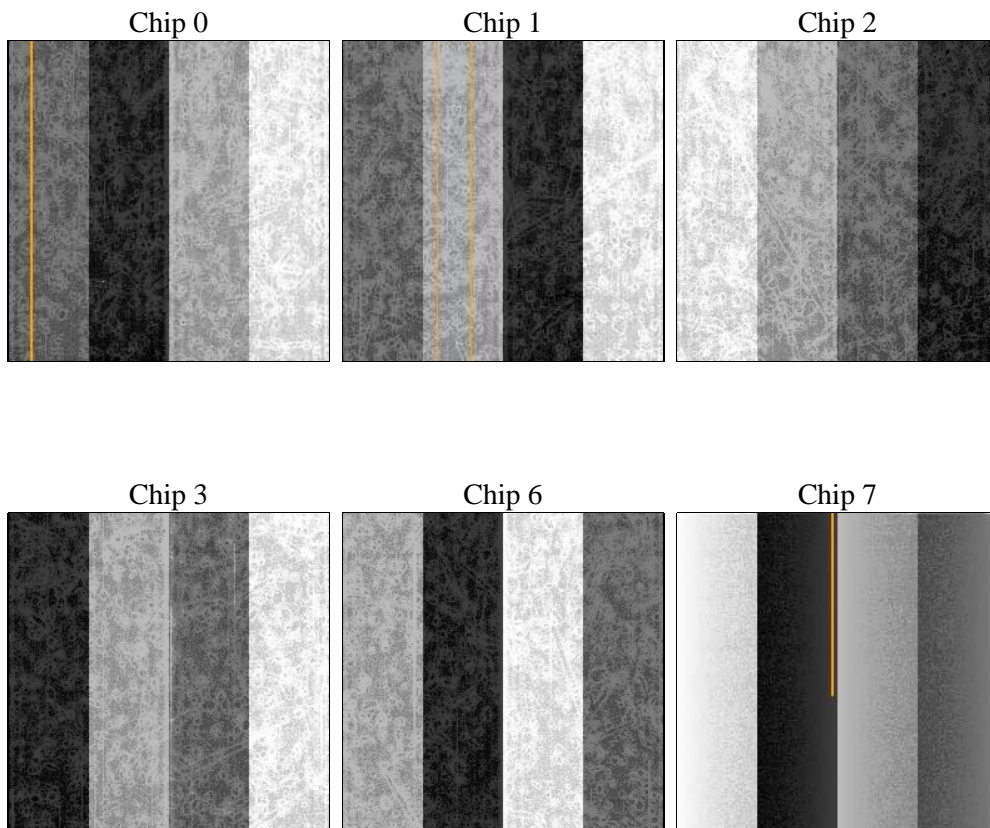
## 2 OBI

### 2.1 OBI

#### 2.1.1 Images



#### 2.1.2 Bias



### 2.1.3 Parameters

obi_num	0	Obi number	sched_exp_time	5000.000000	[s] Scheduled observation exposure time
ascdsver	8.4.4	Processing system revision	ontime	4751.999982357	Sum of GTIs [s]
caldsver	4.4.9	&#160	ontime0	4751.999982357	Sum of GTIs [s]
date	2012-05-23T11:55:45	Date and time of file creation	ontime1	4748.759041965	Sum of GTIs [s]
revision	2	Processing version of data	ontime2	4751.999982357	Sum of GTIs [s]
			ontime3	4751.999982357	Sum of GTIs [s]
			ontime6	4751.999982357	Sum of GTIs [s]
			ontime7	4751.999982357	Sum of GTIs [s]
			l1events	301663	Number of level 1 events

### 2.1.4 Events

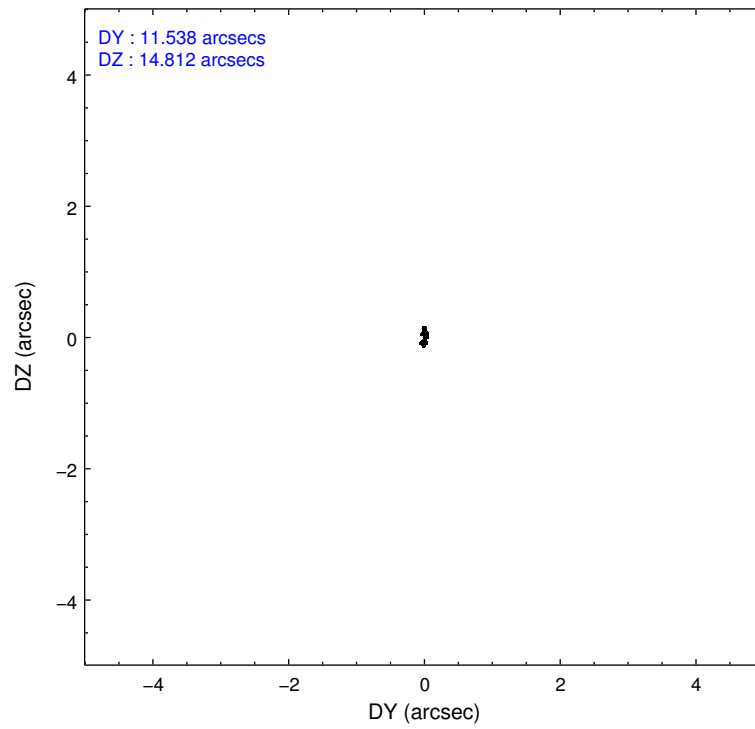
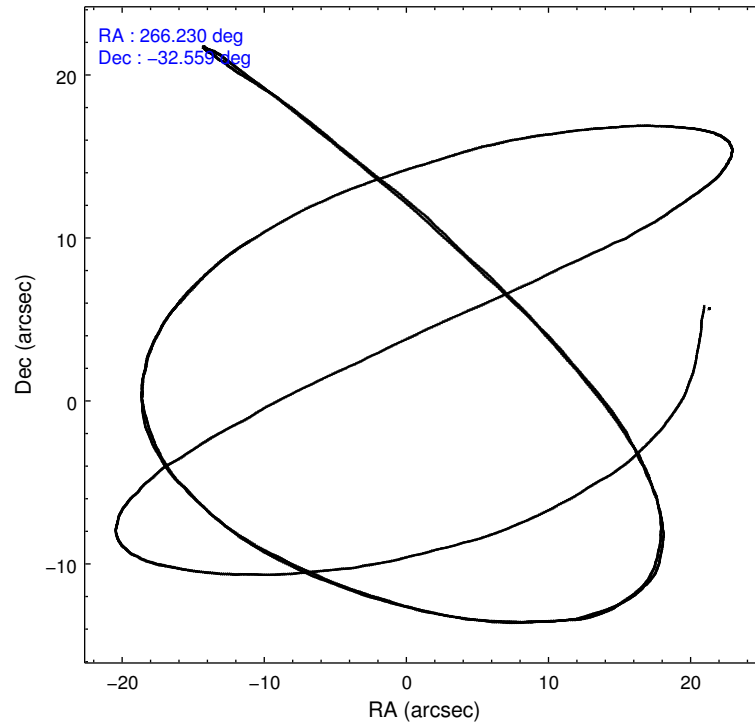
	ccd 0	ccd 1	ccd 2	ccd 3	ccd 6	ccd 7		ccd 0	ccd 1	ccd 2	ccd 3	ccd 6	ccd 7
level 1 events	46427	45732	48686	47075	48412	65331	grade 0 events	4583	4537	4415	4600	2426	2356
rejected events	37717	36696	40606	38607	42497	37956		9%	9%	9%	9%	5%	3%
rejected %	81%	80%	83%	82%	87%	58%	grade 1 events	50	39	46	41	34	58
								0%	0%	0%	0%	0%	0%
							grade 2 events	1714	1790	1486	1466	1281	5727
								3%	3%	3%	3%	2%	8%
							grade 3 events	645	691	595	618	561	2365
								1%	1%	1%	1%	1%	3%
							grade 4 events	607	675	587	659	539	2358
								1%	1%	1%	1%	1%	3%
							grade 5 events	1855	2039	1813	2245	2292	6198
								3%	4%	3%	4%	4%	9%
							grade 6 events	1170	1353	1010	1138	1119	14615
								2%	2%	2%	2%	2%	22%
							grade 7 events	35803	34608	38734	36308	40160	31654
								77%	75%	79%	77%	82%	48%

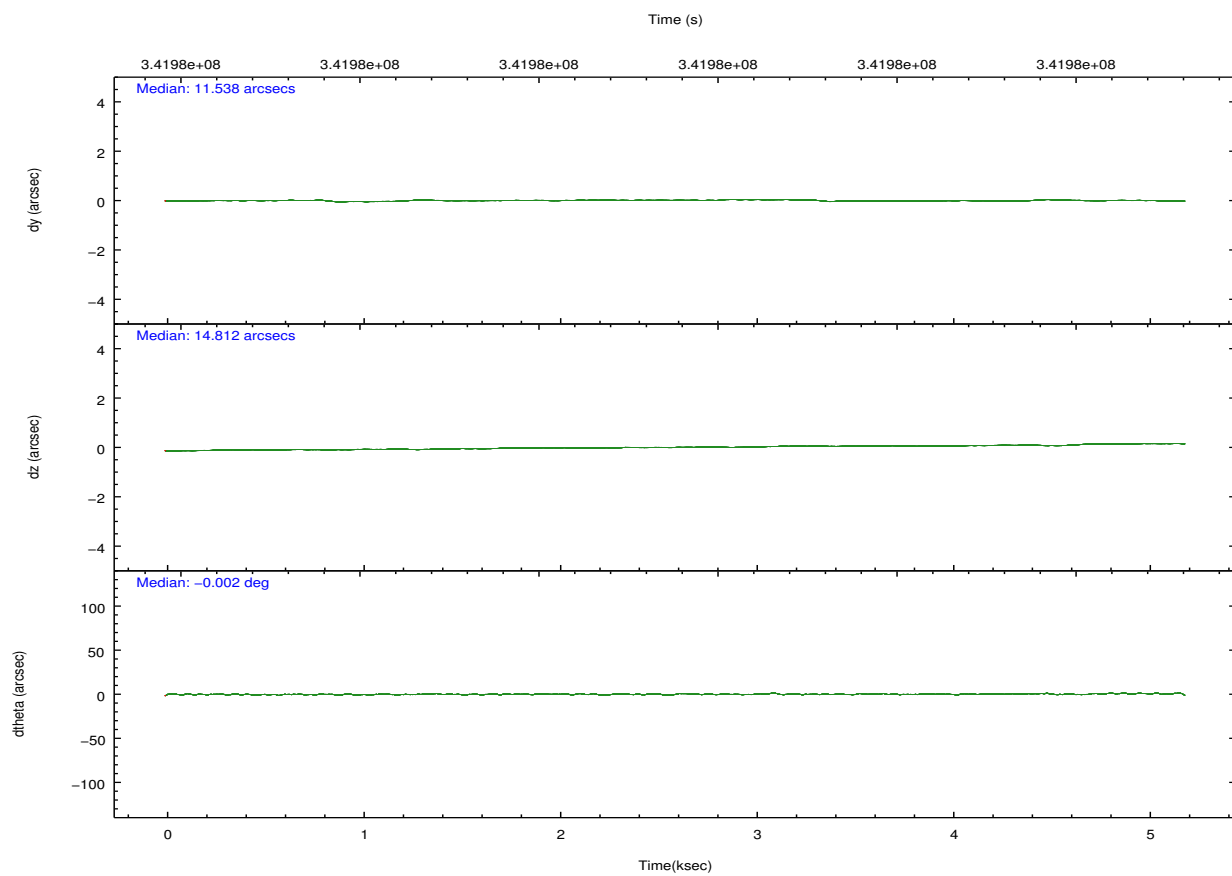
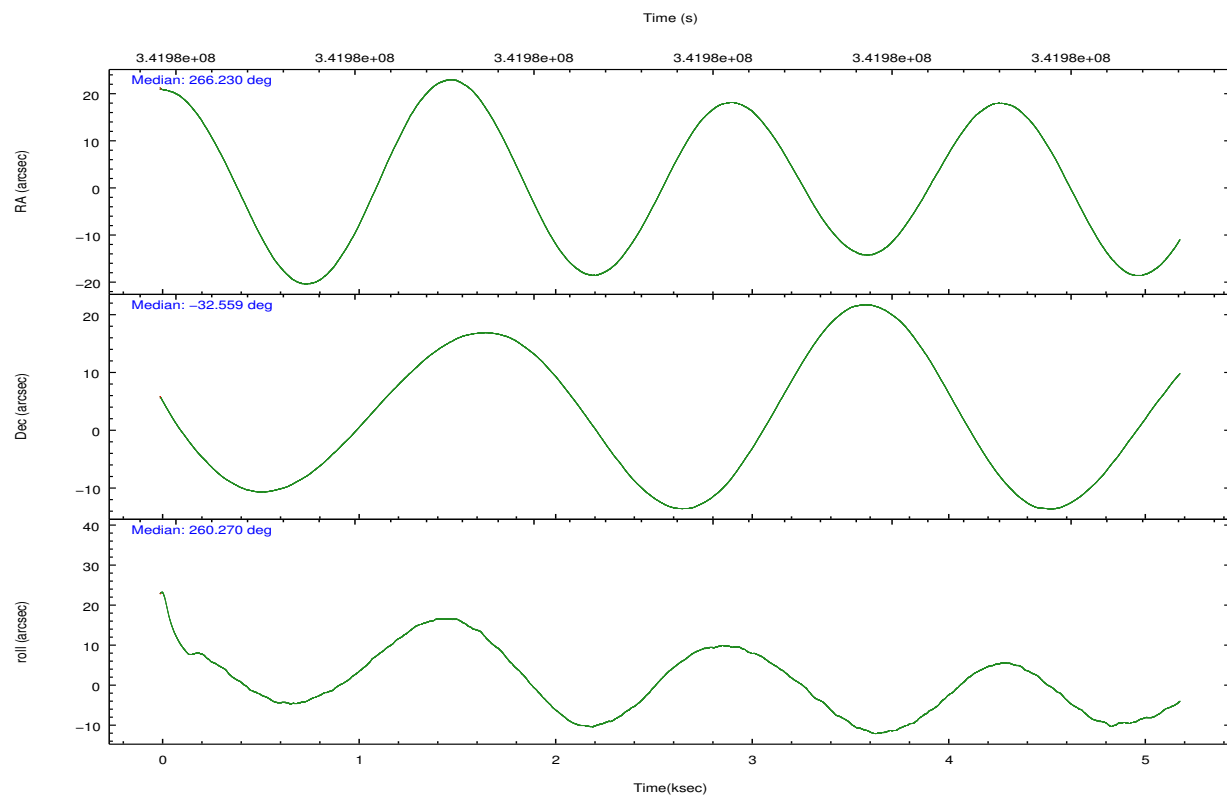


## 2.2 Compared Parameters

Parameter	Planned	Actual	Parameter	Planned	Actual
Instrument	ACIS	ACIS	Obspar format version number	7	7
Detector	ACIS-012367	ACIS-012367	Obspar file type	PREDICTED	ACTUAL
Grating	NONE	NONE	Obspar update status	NONE	UPDATED
Data mode	FAINT	FAINT	CCD I0 on	Y	Y
Observation mode	POINTING	POINTING	CCD I1 on	Y	Y
[deg] Pointing RA	266.219006	266.2302219394169	CCD I2 on	Y	Y
[deg] Pointing Dec	-32.532264	-32.55850891601719	CCD I3 on	Y	Y
[deg] Pointing Roll	260.063188	260.2779109109258	CCD S0 on	N	N
[mm] SIM focus pos	-0.782348	-0.7809083437167272	CCD S1 on	N	N
[mm] SIM defocus	0	0.001439871863259334	CCD S2 on	O1	Y
[mm] SIM translation stage pos	-233.592463	-233.5874344608287	CCD S3 on	O2	Y
[mm] SIM translation stage offset	0	-0.005018542100998502	CCD S4 on	N	N
[s] Observation start time (MET)	341979344.184000	341978933.80452	CCD S5 on	N	N
Observation start date	2008-11-02T02:14:39	2008-11-02T02:08:53	Number of optional ACIS chips dropped	0	0
[s] Observation end time (MET)	341984344.184000	341985831.02986	On-chip summing requested	N	N
Observation end date	2008-11-02T03:37:59	2008-11-02T04:03:51	Subarray requested	NONE	NONE
Read mode	TIMED	TIMED	Alternating exposures requested	N	N
			[s] Primary exposure time	0.000000	3.2

## 2.3 Aspect



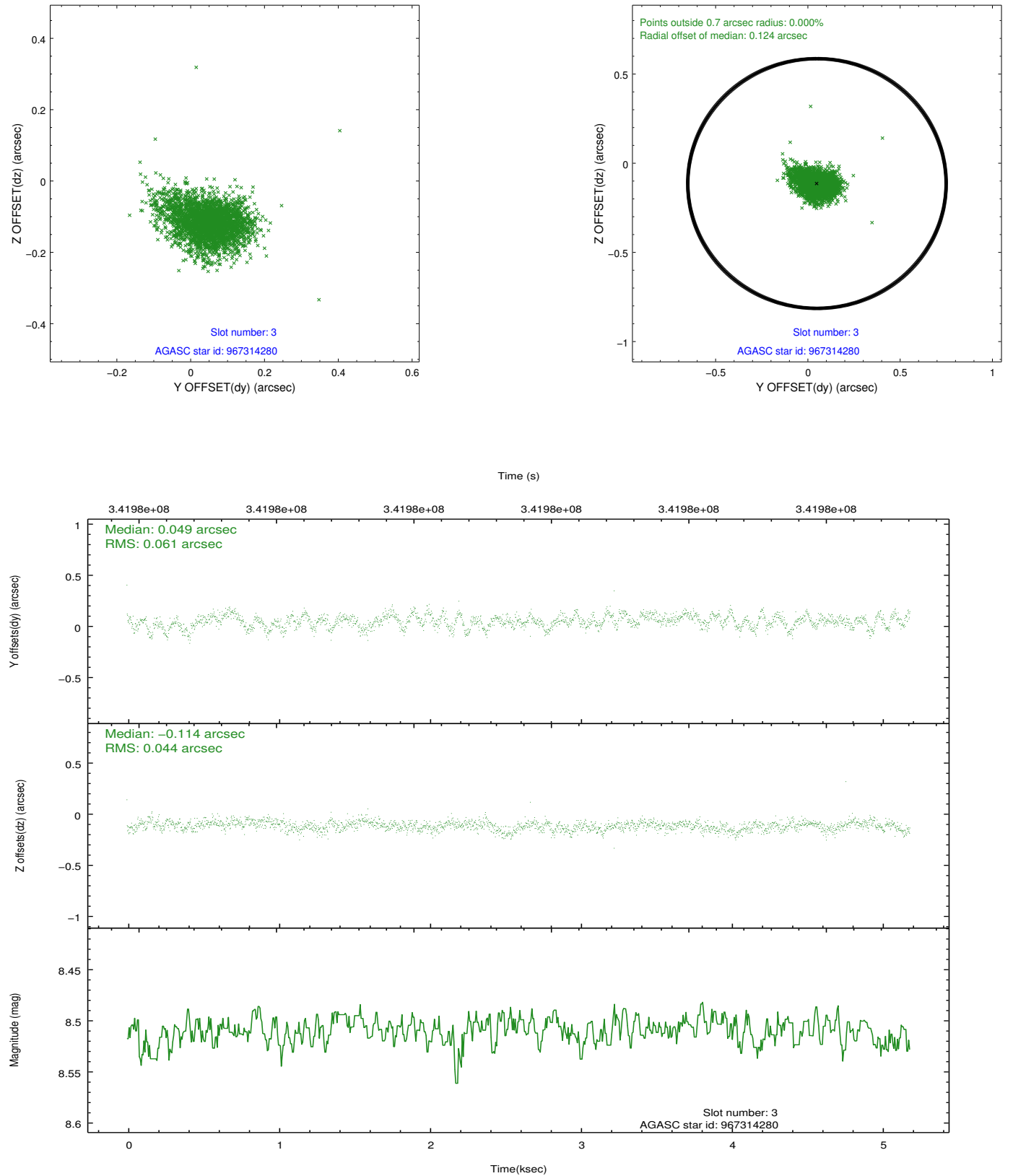


### Slot Statistics

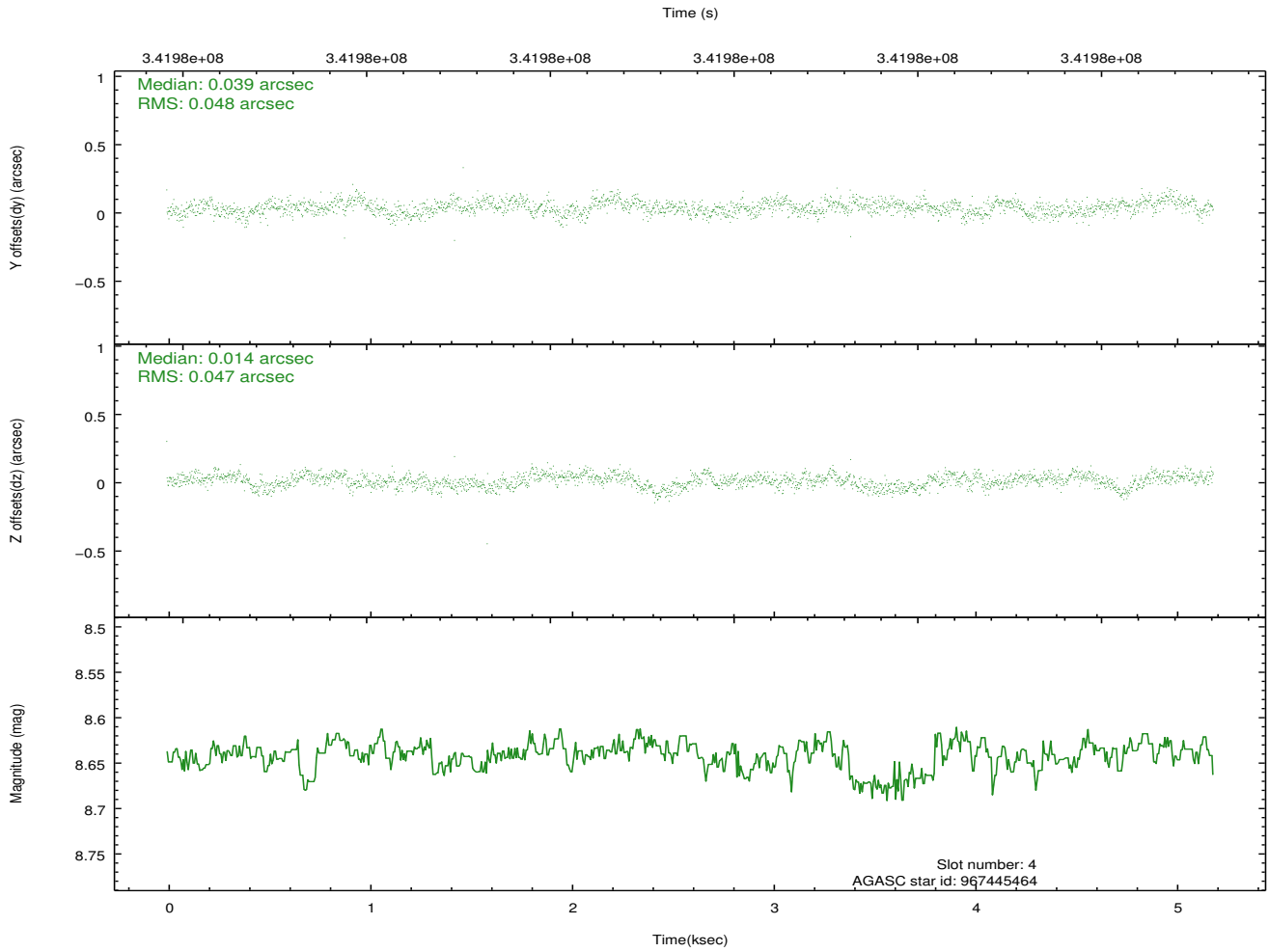
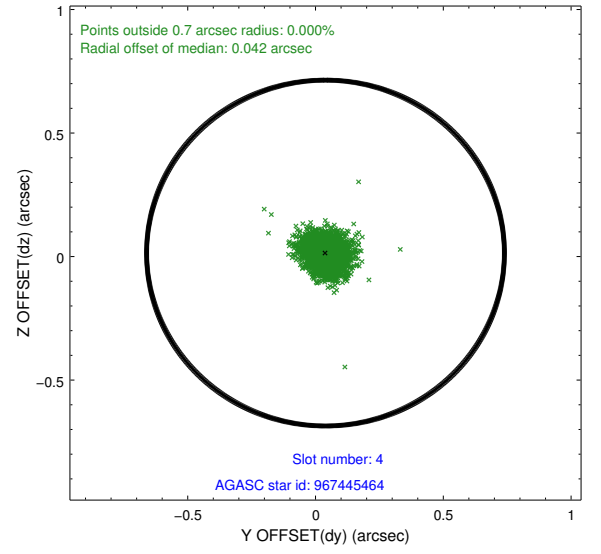
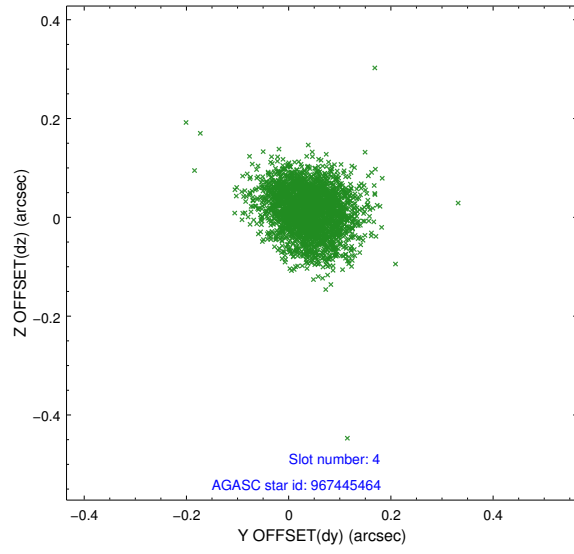
slot	status	id	mag	n_pts	med_dy	med_dz	dr1	dr2	ra	dec	mean_y	mean_z
0	FID	ACIS-I-1	7.05	1266	0.011	0.011	0.013	0.023	0.000000	0.000000	928.03	-838.39
1	FID	ACIS-I-5	7.04	1266	-0.152	0.034	0.009	0.018	0.000000	0.000000	-1819.60	1058.52
2	FID	ACIS-I-6	7.05	1266	0.049	0.024	0.011	0.018	0.000000	0.000000	392.33	1704.34
3	GUIDE	967314280	8.51	2532	0.049	-0.114	0.077	0.131	265.390328	-32.919403	1813.60	-2223.86
4	GUIDE	967445464	8.64	2528	0.039	0.014	0.070	0.112	265.676970	-32.968202	1832.06	-1341.11
5	GUIDE	967446216	8.70	2529	-0.100	0.052	0.078	0.129	266.739036	-32.414310	-688.16	1484.05
6	GUIDE	967449280	8.75	2531	0.042	0.139	0.077	0.125	266.690713	-32.455990	-516.43	1365.76
7	GUIDE	967447552	8.76	2529	-0.028	-0.080	0.087	0.140	265.515186	-32.048669	-1338.62	-2413.84

## 2.4 Star Slots

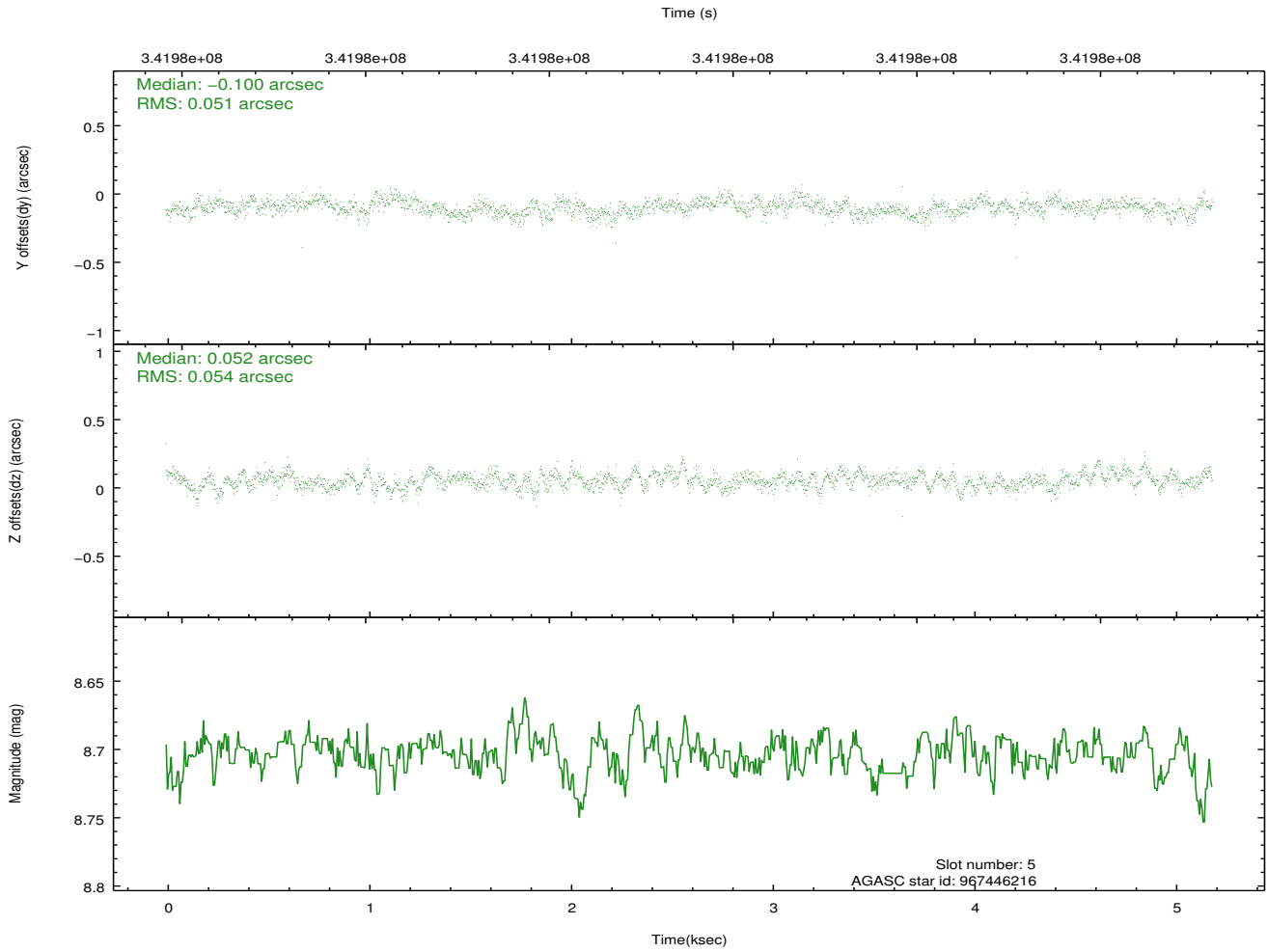
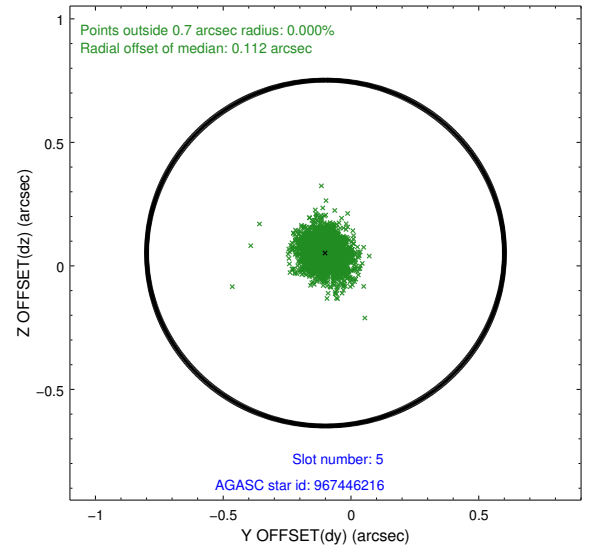
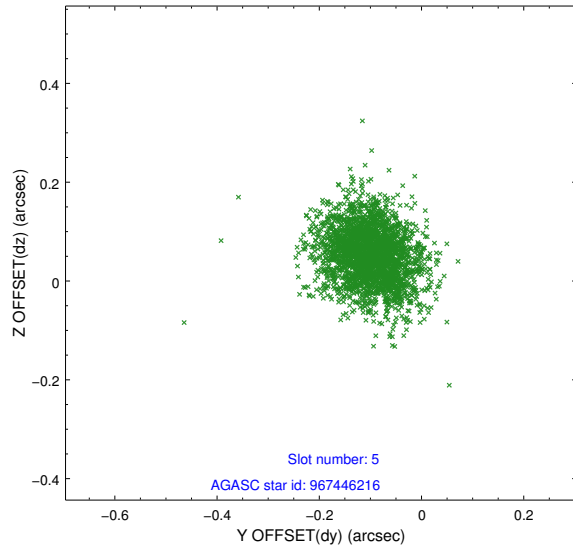
### 2.4.1 Slot 3



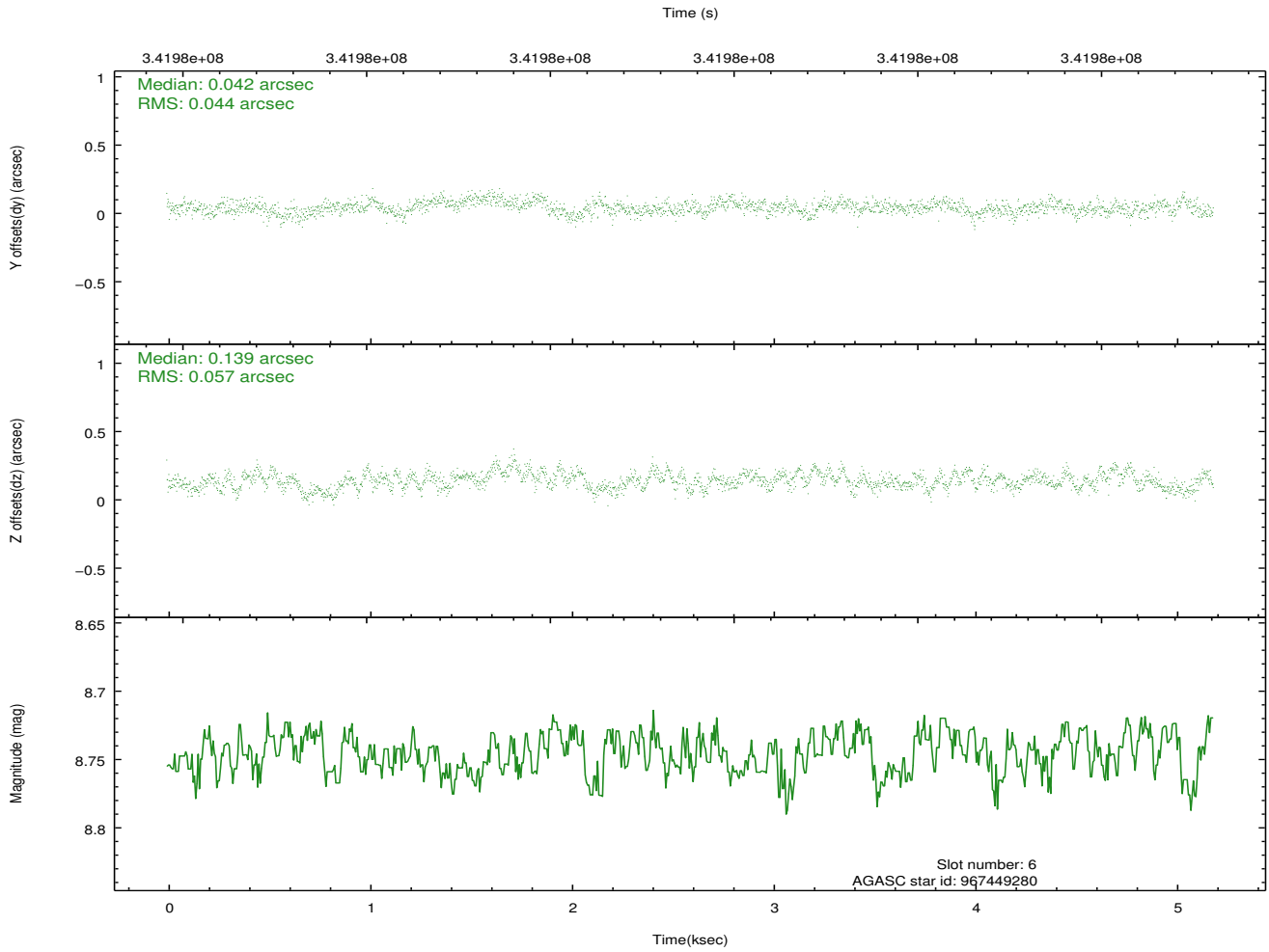
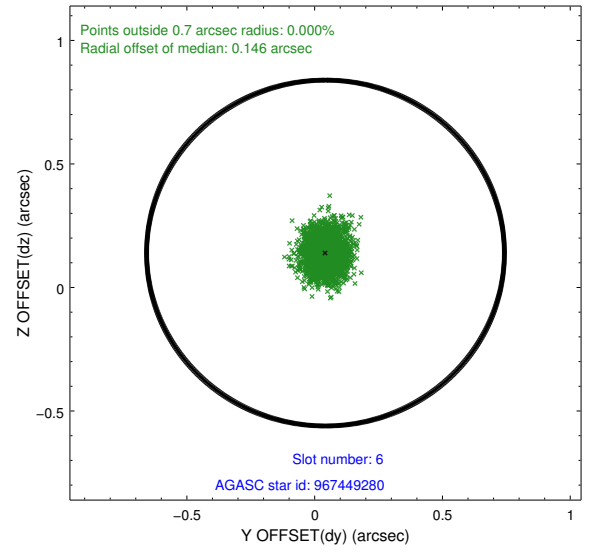
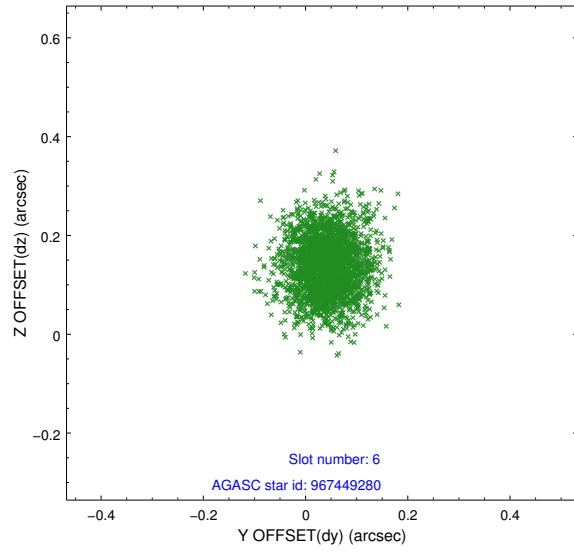
## 2.4.2 Slot 4



### 2.4.3 Slot 5

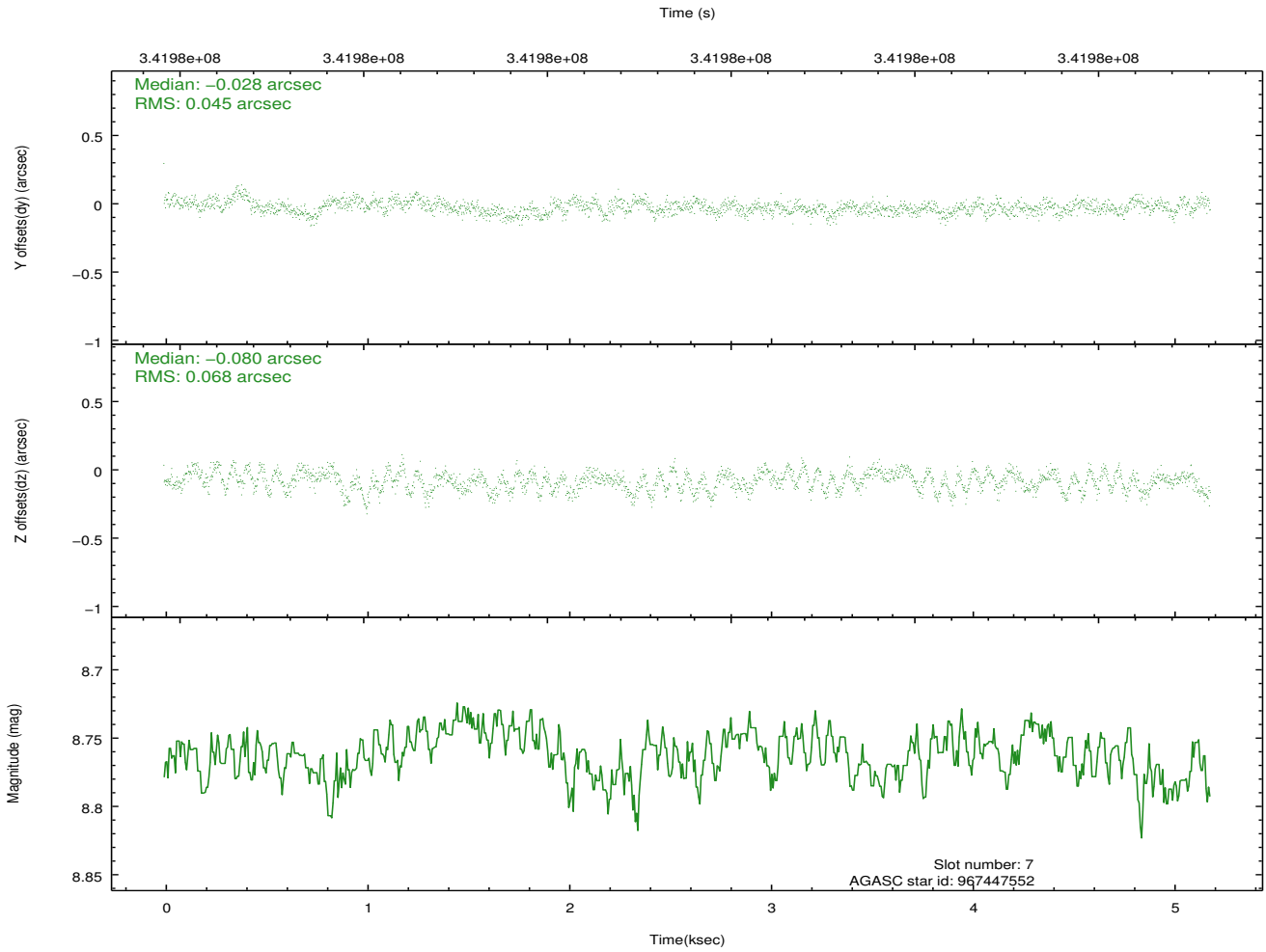
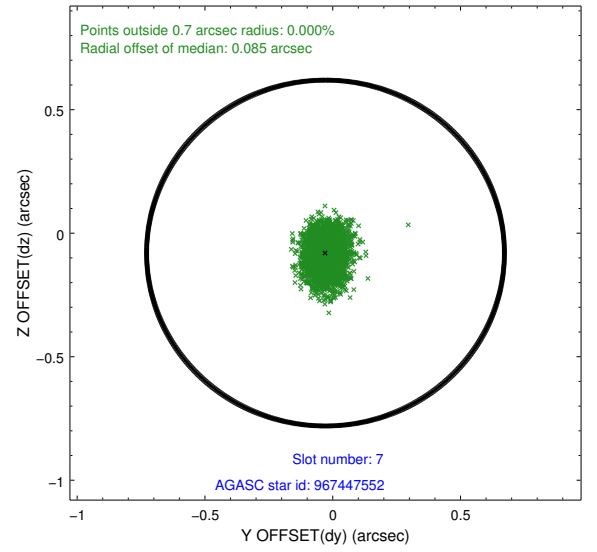
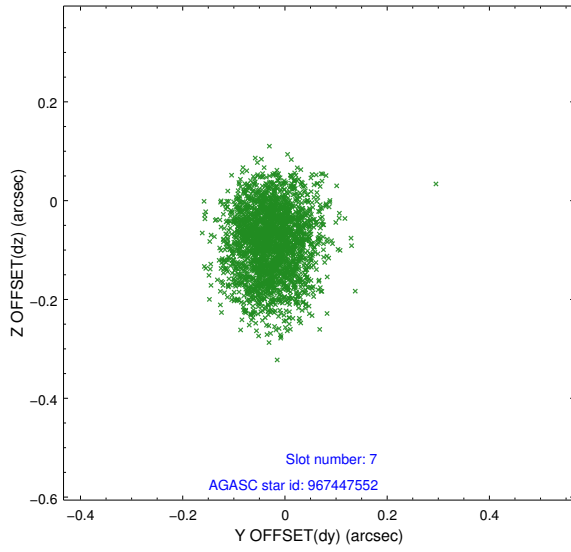


## 2.4.4 Slot 6



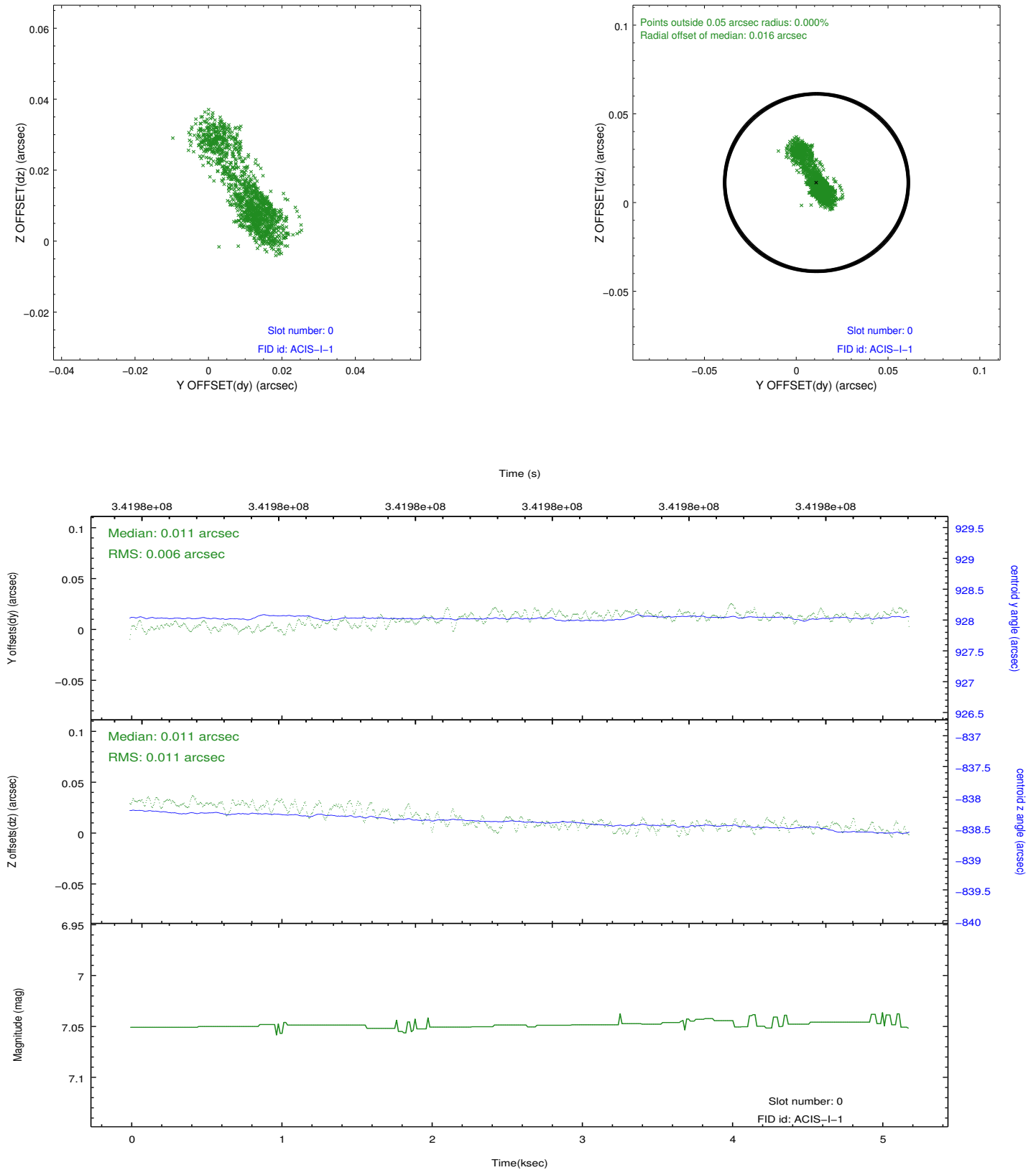


## 2.4.5 Slot 7

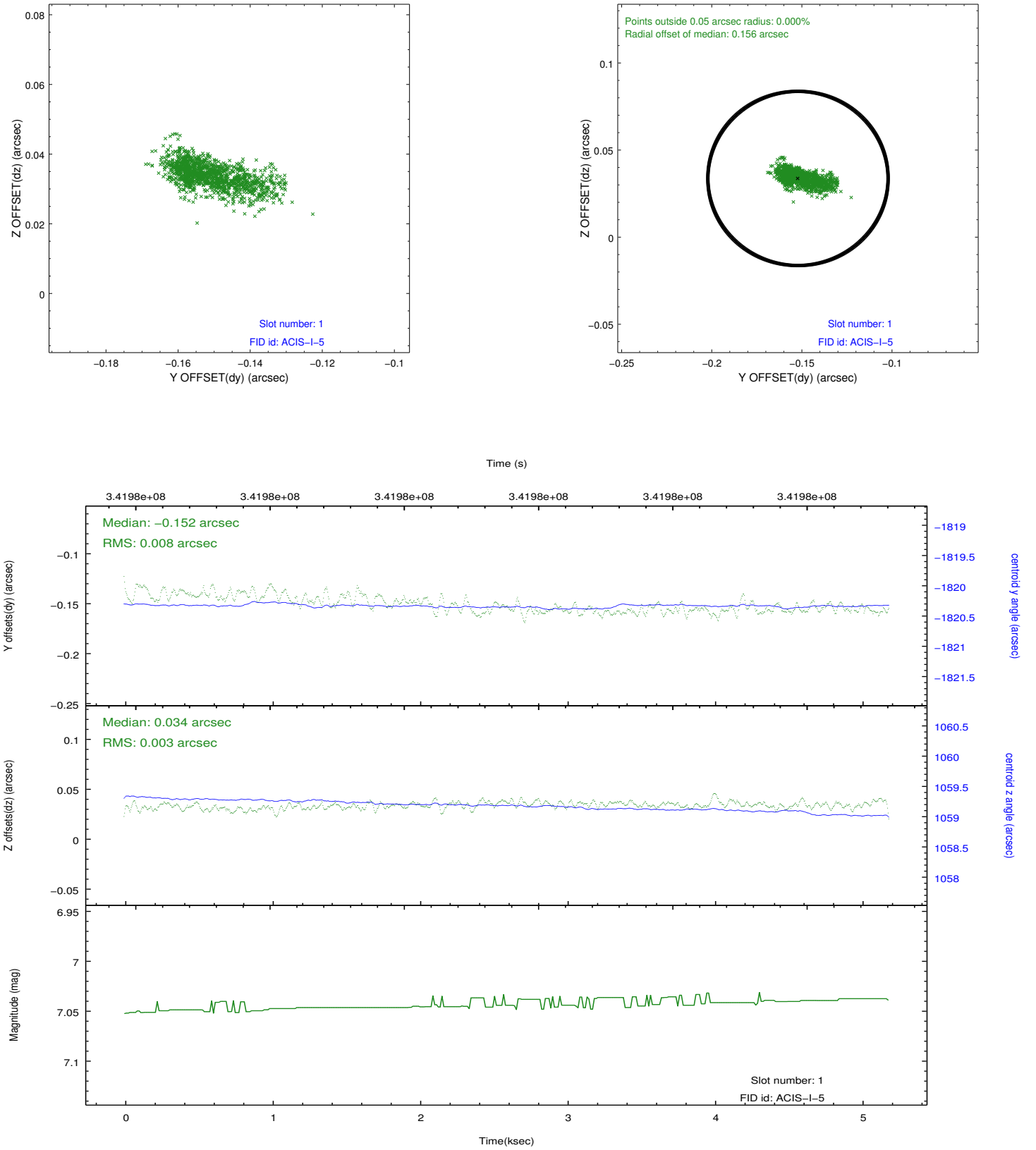


## 2.5 FID Slots

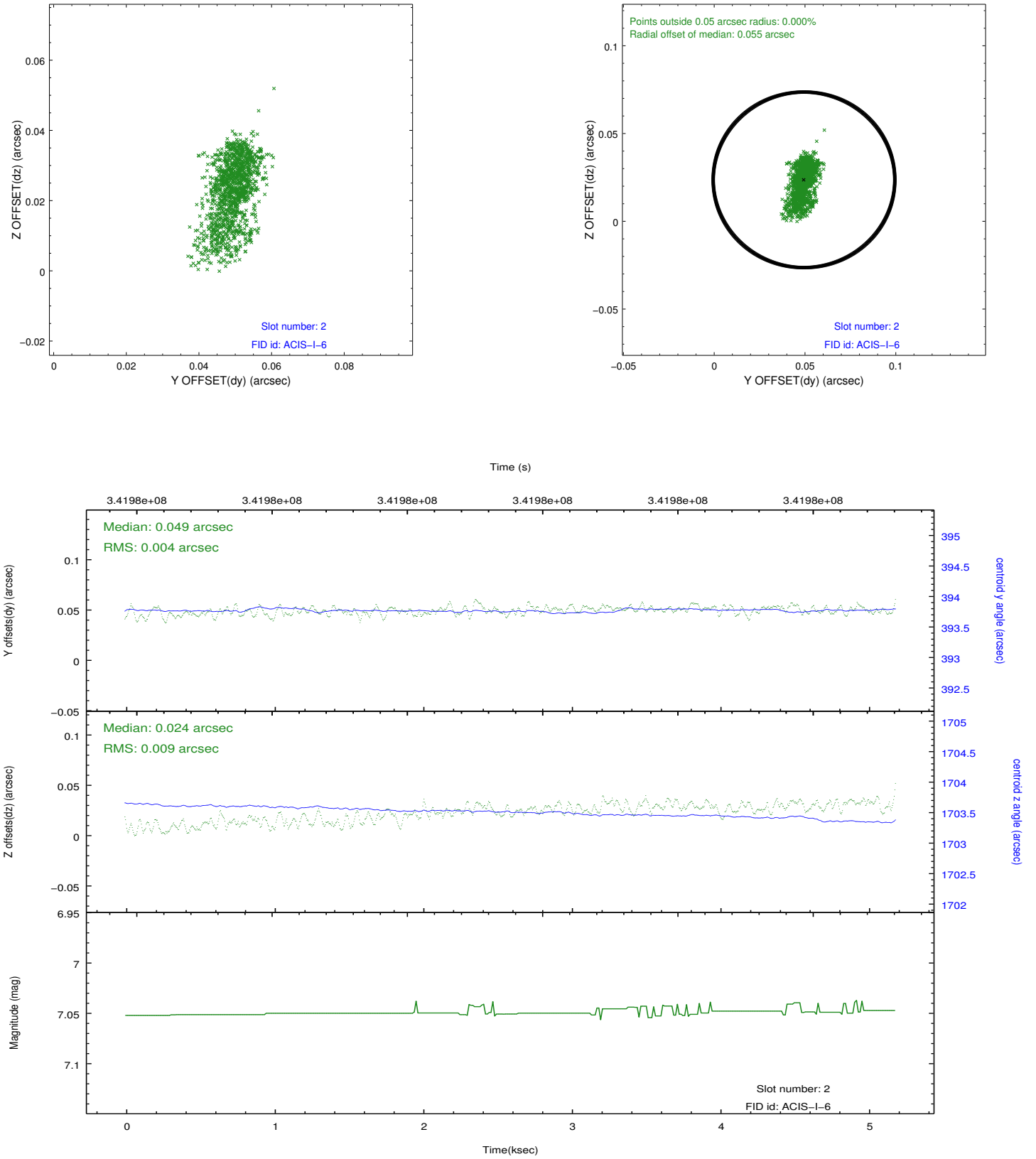
### 2.5.1 Slot 0



## 2.5.2 Slot 1



### 2.5.3 Slot 2



## A Summary

### A.1 Status

V&V Scientist	Beth Sundheim
V&V Date (YYYY-MM-DD)	2012.05.31
V&V Edition	1
V&V Disposition and Status	OK
V&V Charge Time	4.75199998

### A.2 Comments

Joint proposal with NOAO.