

V&V Reference Report

L2 ASCDS Version : 8.4.4

Observation 8773 - L2 Version 2
Chandra X-Ray Center

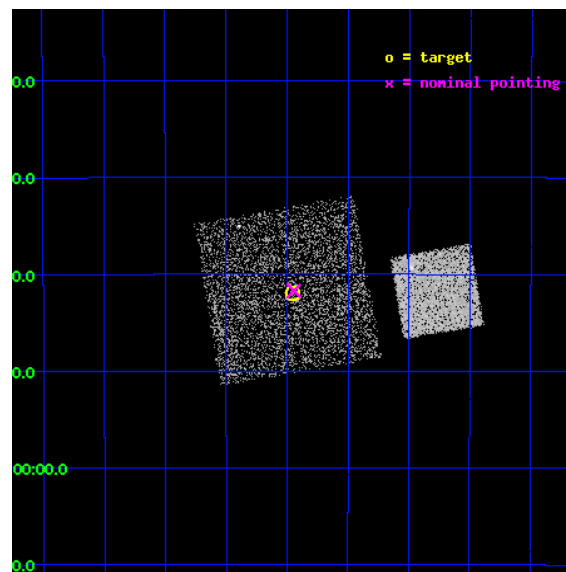
L2 Processing Date : May 14 2012

Contents

1	Front	2
2	OBI	3
2.1	OBI	3
2.1.1	Images	3
2.1.2	Bias	3
2.1.3	Parameters	4
2.1.4	Events	4
2.2	Compared Parameters	5
2.3	Aspect	6
2.4	Star Slots	9
2.4.1	Slot 3	9
2.4.2	Slot 4	10
2.4.3	Slot 5	11
2.4.4	Slot 6	12
2.4.5	Slot 7	13
2.5	FID Slots	14
2.5.1	Slot 0	14
2.5.2	Slot 1	15
2.5.3	Slot 2	16
A	Summary	17
A.1	Status	17
A.2	Comments	17

1 Front

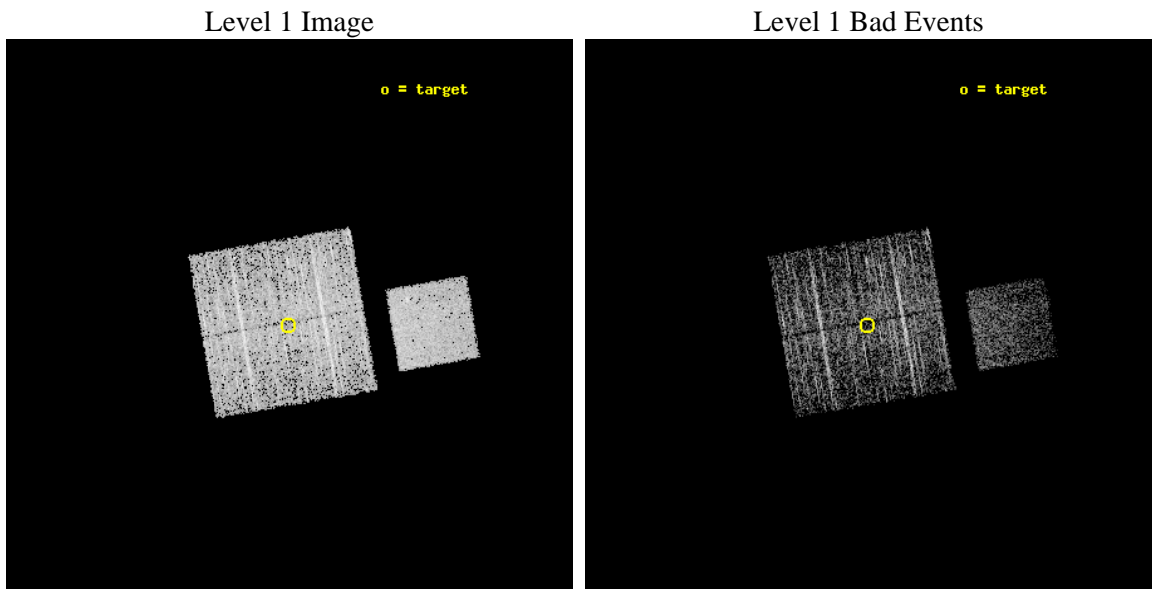
seq_num	400824	Sequence number
obs_id	8773	Observation id
title	The Galactic Bulge Survey: categorising the plethora of faint X-ray sources in the Galactic Bulge	Proposal title
observer	dr Peter Jonker	Principal investigator
object	GBS1	Source name
dtcycle	0	
cycle	P	events from which exps? Prim/Second/Both
ra_targ	266.487925	Observer's specified target RA [deg]
dec_targ	-31.700222	Observer's specified target Dec [deg]
ra_nom	266.48600437164	Nominal RA [deg]
dec_nom	-31.695494984314	Nominal Dec [deg]
roll_nom	80.207705027909	Nominal Roll [deg]
revision	2	Processing version of data
ontime	2182.4000167847	Sum of GTIs [s]
livetime	2153.8853539059	Livetime [s]
ontime0	2182.4000167847	Sum of GTIs [s]
ontime1	2182.4000167847	Sum of GTIs [s]
ontime2	2182.4000167847	Sum of GTIs [s]
ontime3	2182.4000167847	Sum of GTIs [s]
ontime7	2182.4000167847	Sum of GTIs [s]
l2events	15273	Number of level 2 events



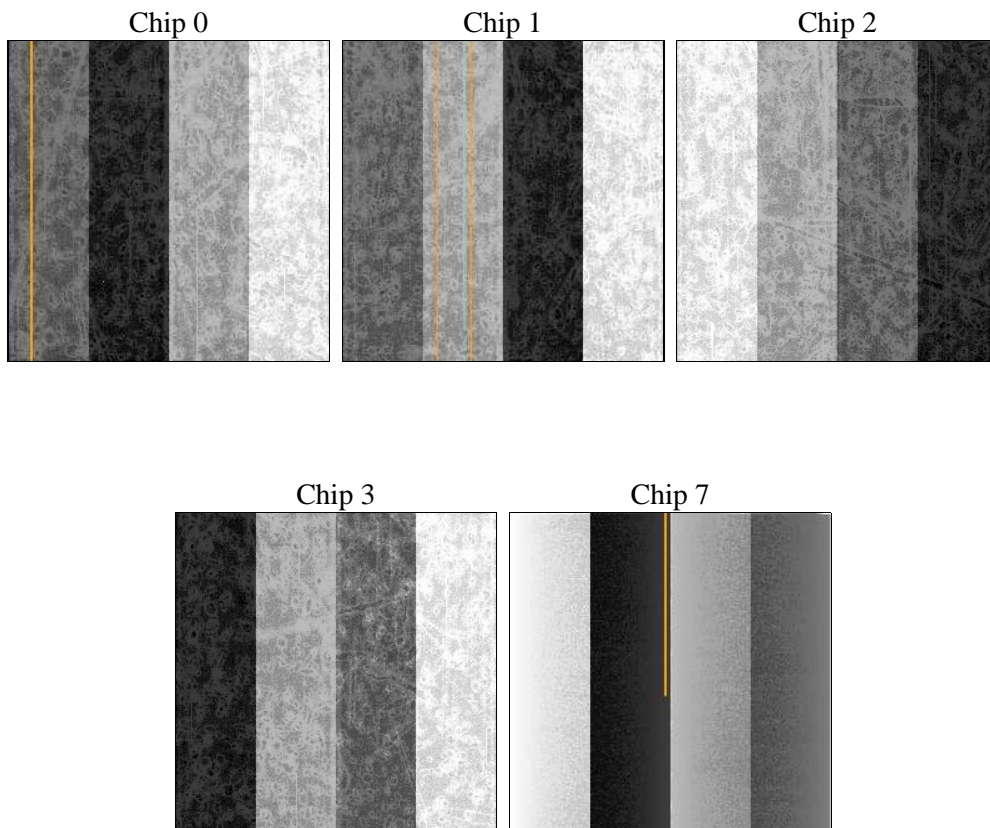
2 OBI

2.1 OBI

2.1.1 Images



2.1.2 Bias



2.1.3 Parameters

obi_num	0	Obi number	sched_exp_time	2000.000000	[s] Scheduled observation exposure time
ascdsver	8.4.4	Processing system revision	ontime	2182.4000167847	Sum of GTIs [s]
caldsver	4.4.9	 	ontime0	2182.4000167847	Sum of GTIs [s]
date	2012-05-14T21:10:22	Date and time of file creation	ontime1	2182.4000167847	Sum of GTIs [s]
revision	2	Processing version of data	ontime2	2182.4000167847	Sum of GTIs [s]
			ontime3	2182.4000167847	Sum of GTIs [s]
			ontime7	2182.4000167847	Sum of GTIs [s]
			l1events	101330	Number of level 1 events

2.1.4 Events

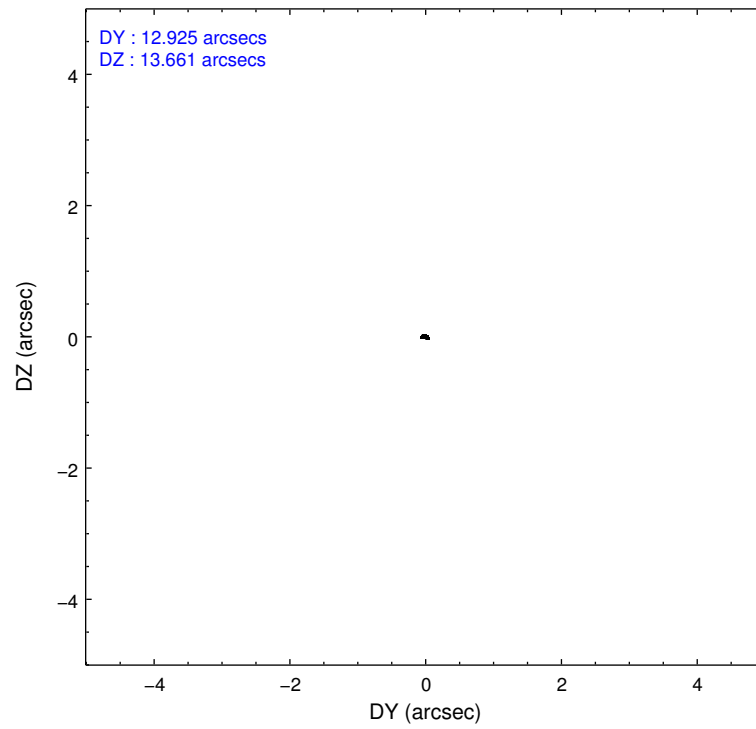
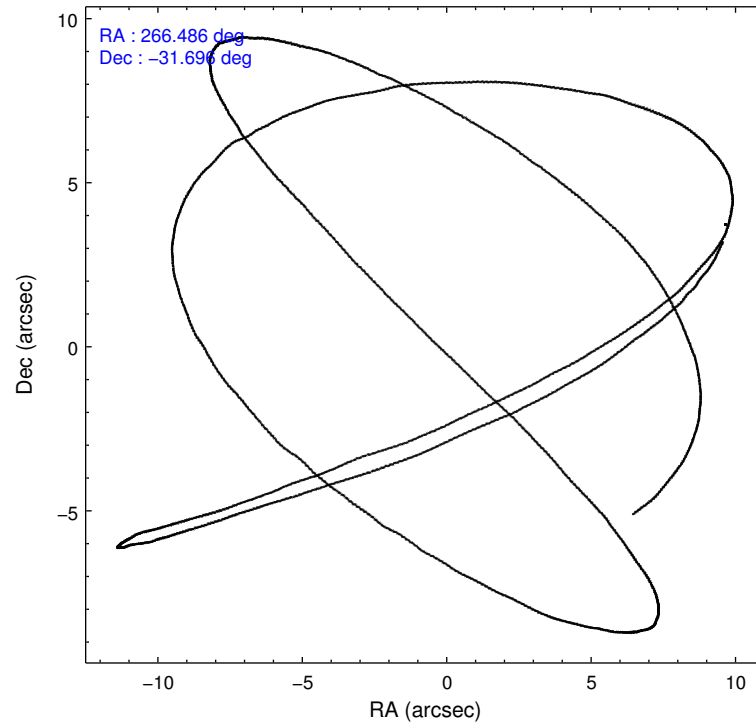
	ccd 0	ccd 1	ccd 2	ccd 3	ccd 7
level 1 events	18783	18563	21566	19895	22523
rejected events	16852	16504	19633	18067	13406
rejected %	89%	88%	91%	90%	59%

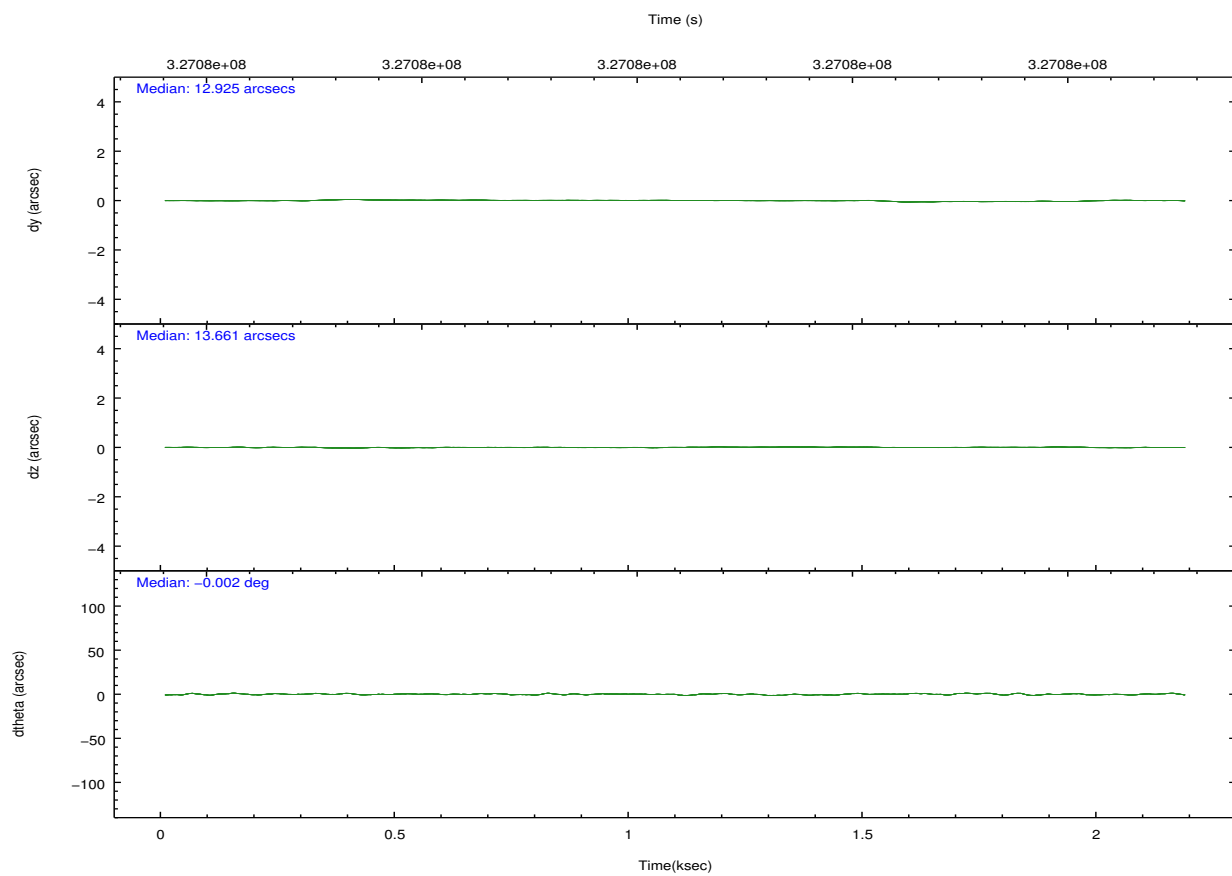
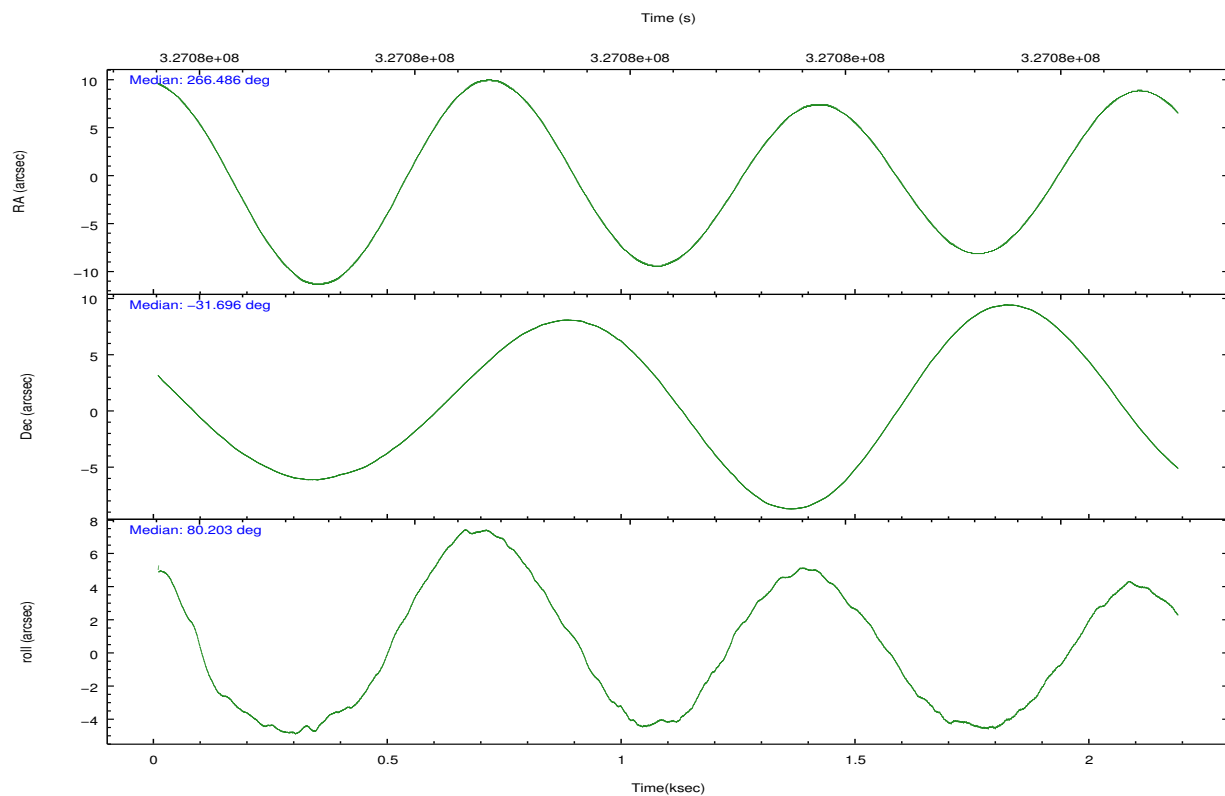
	ccd 0	ccd 1	ccd 2	ccd 3	ccd 7
grade 0 events	885	984	886	858	977
	4%	5%	4%	4%	4%
grade 1 events	9	12	9	14	33
	0%	0%	0%	0%	0%
grade 2 events	484	490	563	453	2111
	2%	2%	2%	2%	9%
grade 3 events	230	228	199	208	985
	1%	1%	0%	1%	4%
grade 4 events	234	250	223	186	1032
	1%	1%	1%	0%	4%
grade 5 events	724	775	655	783	2325
	3%	4%	3%	3%	10%
grade 6 events	405	397	366	393	5361
	2%	2%	1%	1%	23%
grade 7 events	15812	15427	18665	17000	9699
	84%	83%	86%	85%	43%

2.2 Compared Parameters

Parameter	Planned	Actual	Parameter	Planned	Actual
Instrument	ACIS	ACIS	Obspar format version number	7	7
Detector	ACIS-01237	ACIS-01237	Obspar file type	PREDICTED	ACTUAL
Grating	NONE	NONE	Obspar update status	NONE	UPDATED
Data mode	VFAINT	VFAINT	CCD I0 on	Y	Y
Observation mode	POINTING	POINTING	CCD I1 on	Y	Y
[deg] Pointing RA	266.497295	266.4860043716444	CCD I2 on	Y	Y
[deg] Pointing Dec	-31.721257	-31.69549498431449	CCD I3 on	Y	Y
[deg] Pointing Roll	80.004933	80.20770502790873	CCD S0 on	N	N
[mm] SIM focus pos	-0.782348	-0.7809083437167272	CCD S1 on	N	N
[mm] SIM defocus	0	0.001439871863259334	CCD S2 on	N	N
[mm] SIM translation stage pos	-233.592463	-233.5874344608287	CCD S3 on	O1	Y
[mm] SIM translation stage offset	0	-0.005018542100998502	CCD S4 on	N	N
[s] Observation start time (MET)	327076192.184000	327075816.13883	CCD S5 on	N	N
Observation start date	2008-05-13T14:28:47	2008-05-13T14:23:36	Number of optional ACIS chips dropped	0	0
[s] Observation end time (MET)	327078192.184000	327078325.85145	On-chip summing requested	N	N
Observation end date	2008-05-13T15:02:07	2008-05-13T15:05:25	Subarray requested	NONE	NONE
Read mode	TIMED	TIMED	Alternating exposures requested	N	N
			[s] Primary exposure time	0.000000	3.1

2.3 Aspect



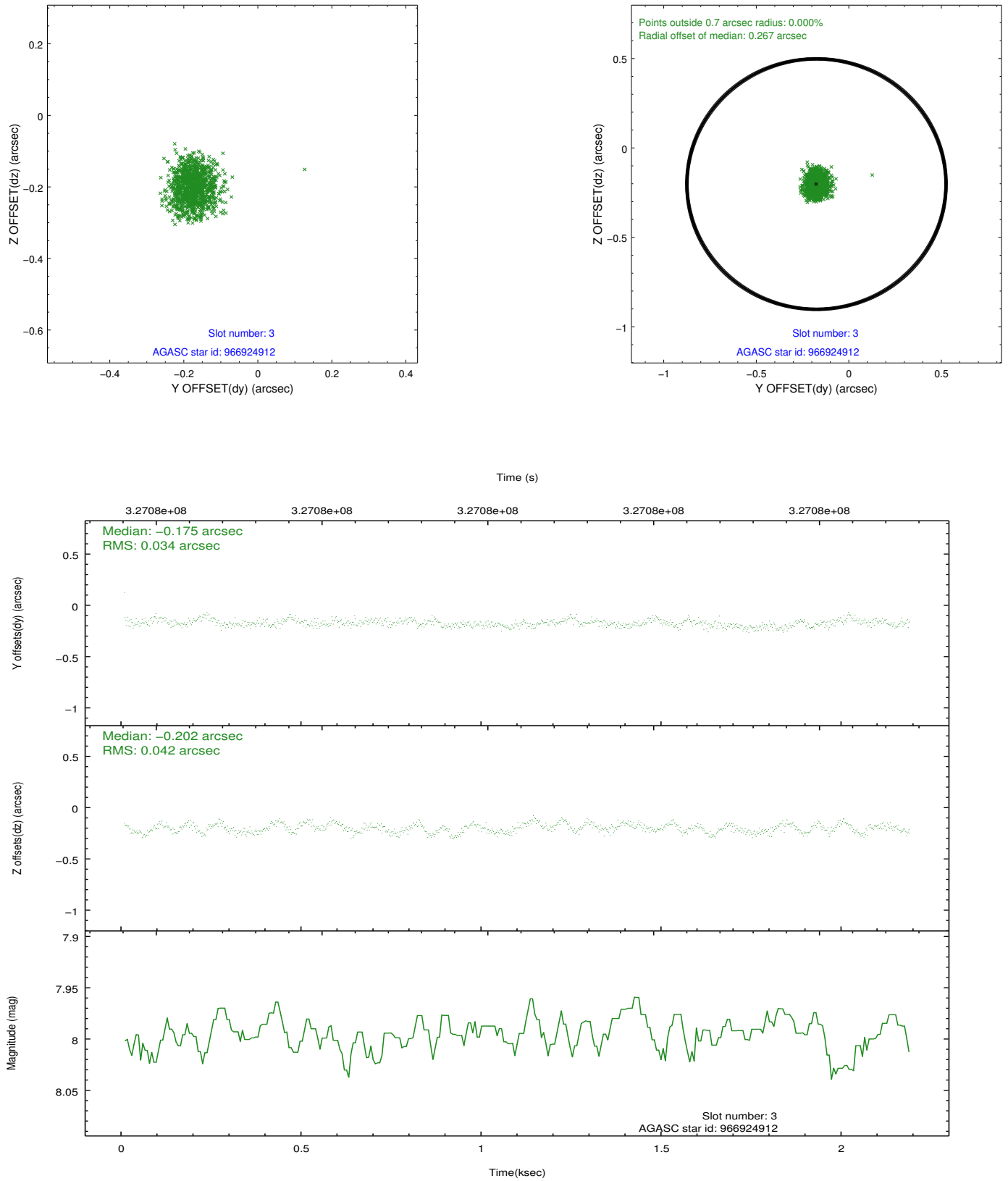


Slot Statistics

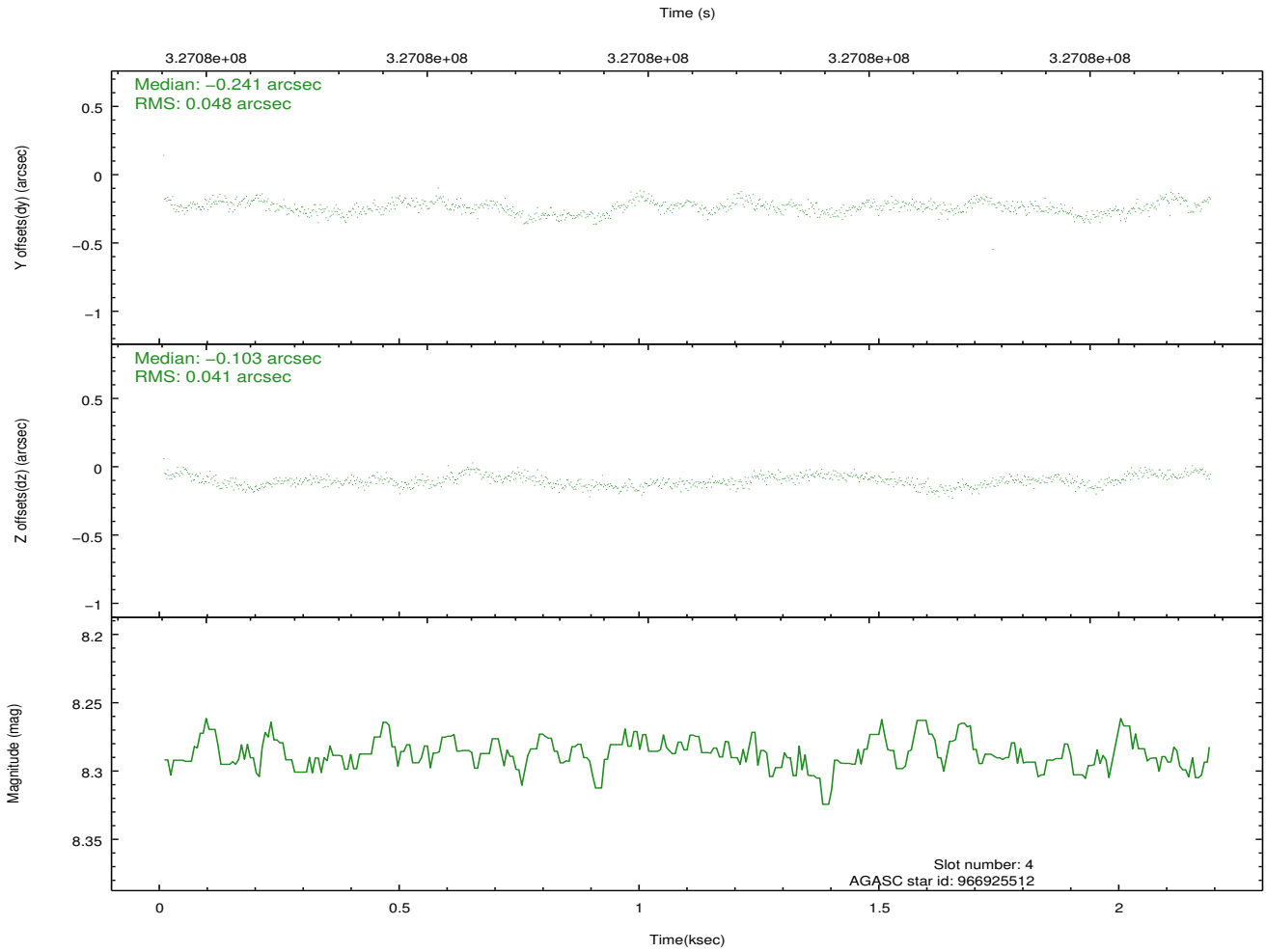
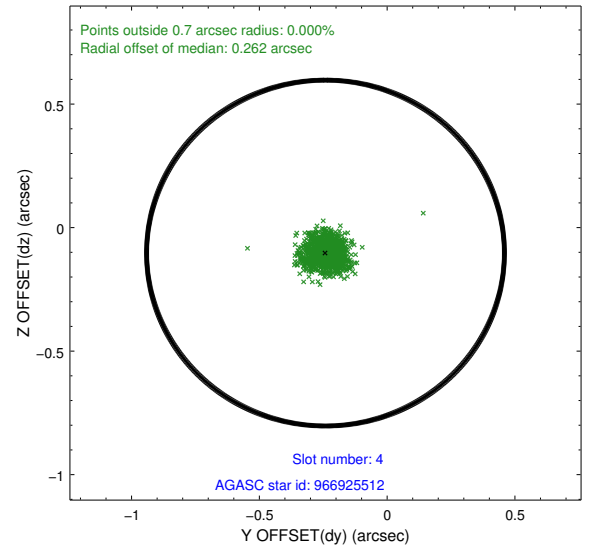
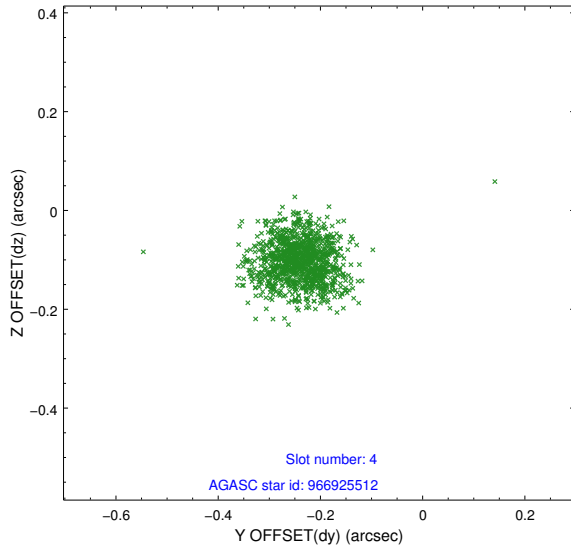
slot	status	id	mag	n_pts	med_dy	med_dz	dr1	dr2	ra	dec	mean_y	mean_z
0	FID	ACIS-I-1	7.05	532	-0.032	0.048	0.008	0.016	0.000000	0.000000	926.57	-837.17
1	FID	ACIS-I-4	6.99	532	0.152	0.006	0.007	0.012	0.000000	0.000000	2148.45	1061.09
2	FID	ACIS-I-5	7.03	532	-0.218	0.017	0.006	0.011	0.000000	0.000000	-1817.78	1062.35
3	GUIDE	966924912	7.99	1065	-0.175	-0.202	0.058	0.090	266.020014	-31.275150	1323.49	1724.48
4	GUIDE	966925512	8.29	1064	-0.241	-0.103	0.068	0.105	266.373606	-31.056700	2290.69	792.74
5	GUIDE	966927000	8.18	1065	0.071	0.195	0.094	0.151	267.318997	-31.255021	2085.18	-2199.61
6	GUIDE	967445088	9.04	1065	0.185	-0.136	0.079	0.129	265.761342	-32.072953	-1641.93	1987.60
7	GUIDE	967446216	8.70	1064	0.167	0.244	0.065	0.110	266.739036	-32.414310	-2331.54	-1154.72

2.4 Star Slots

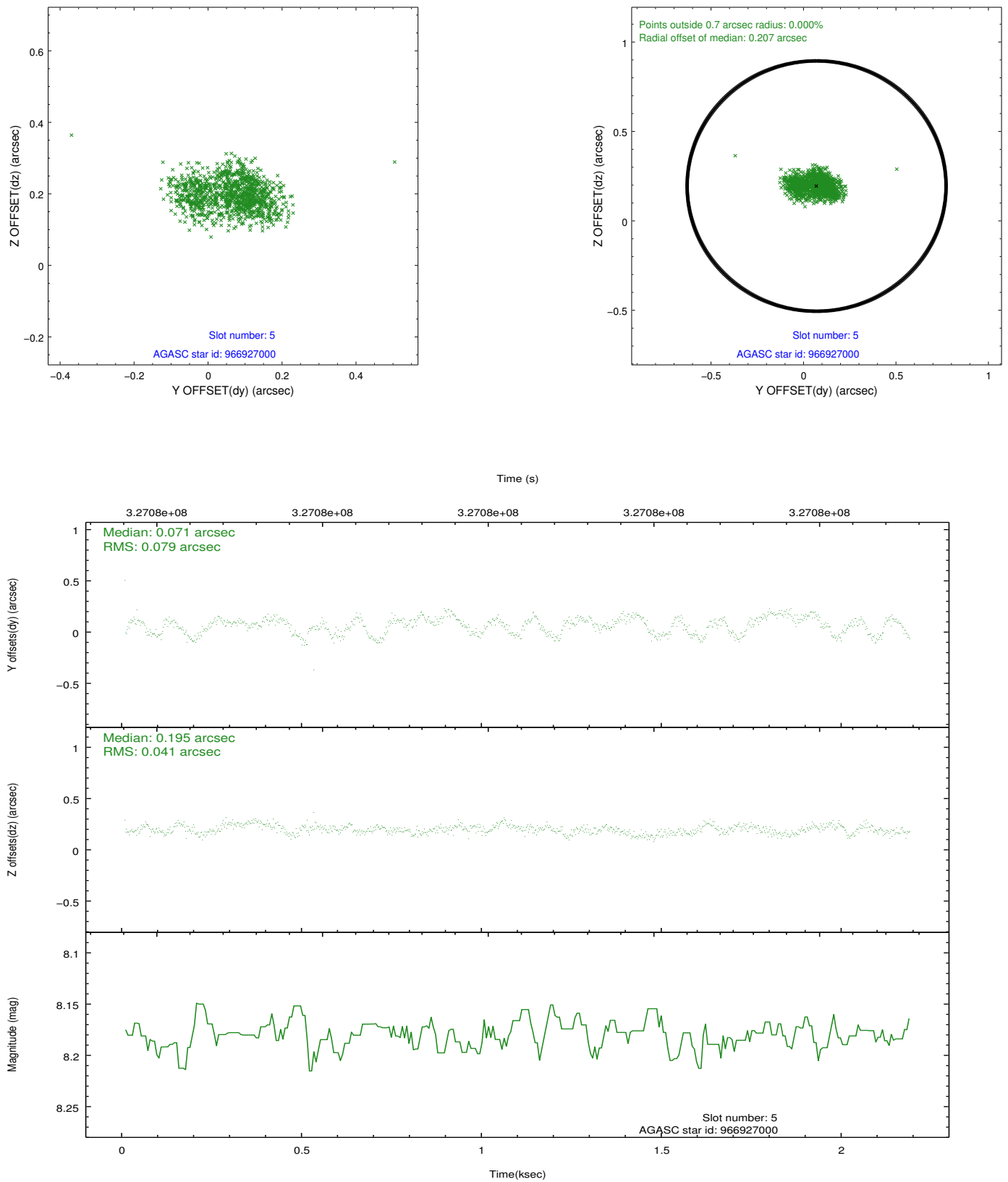
2.4.1 Slot 3



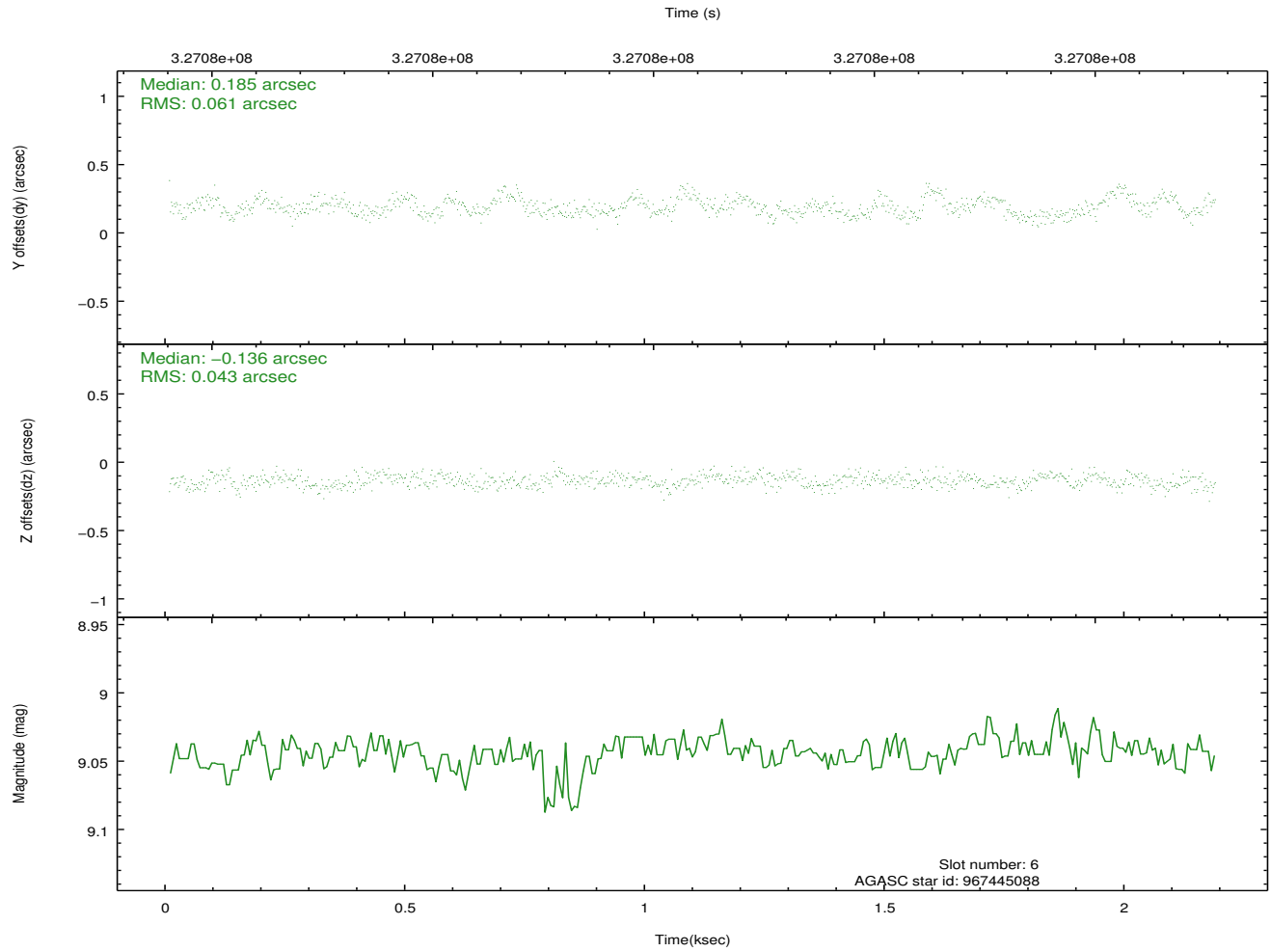
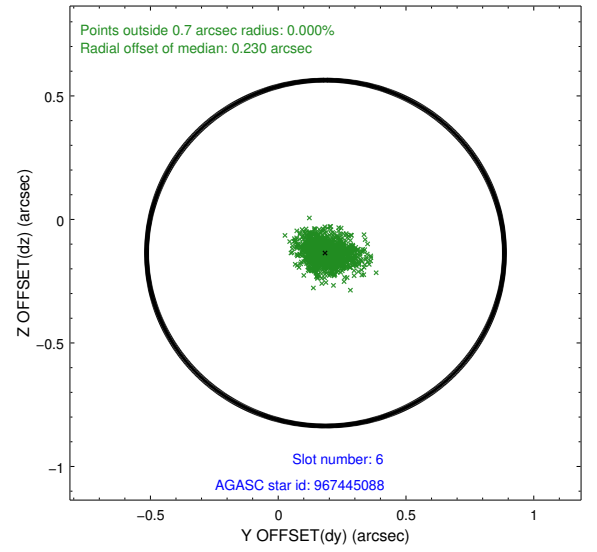
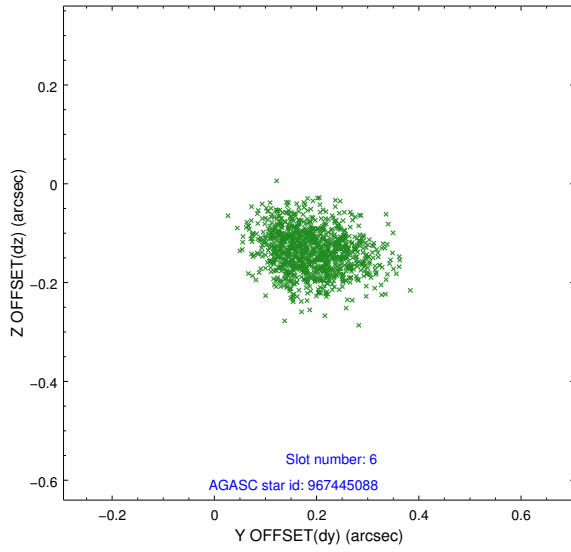
2.4.2 Slot 4



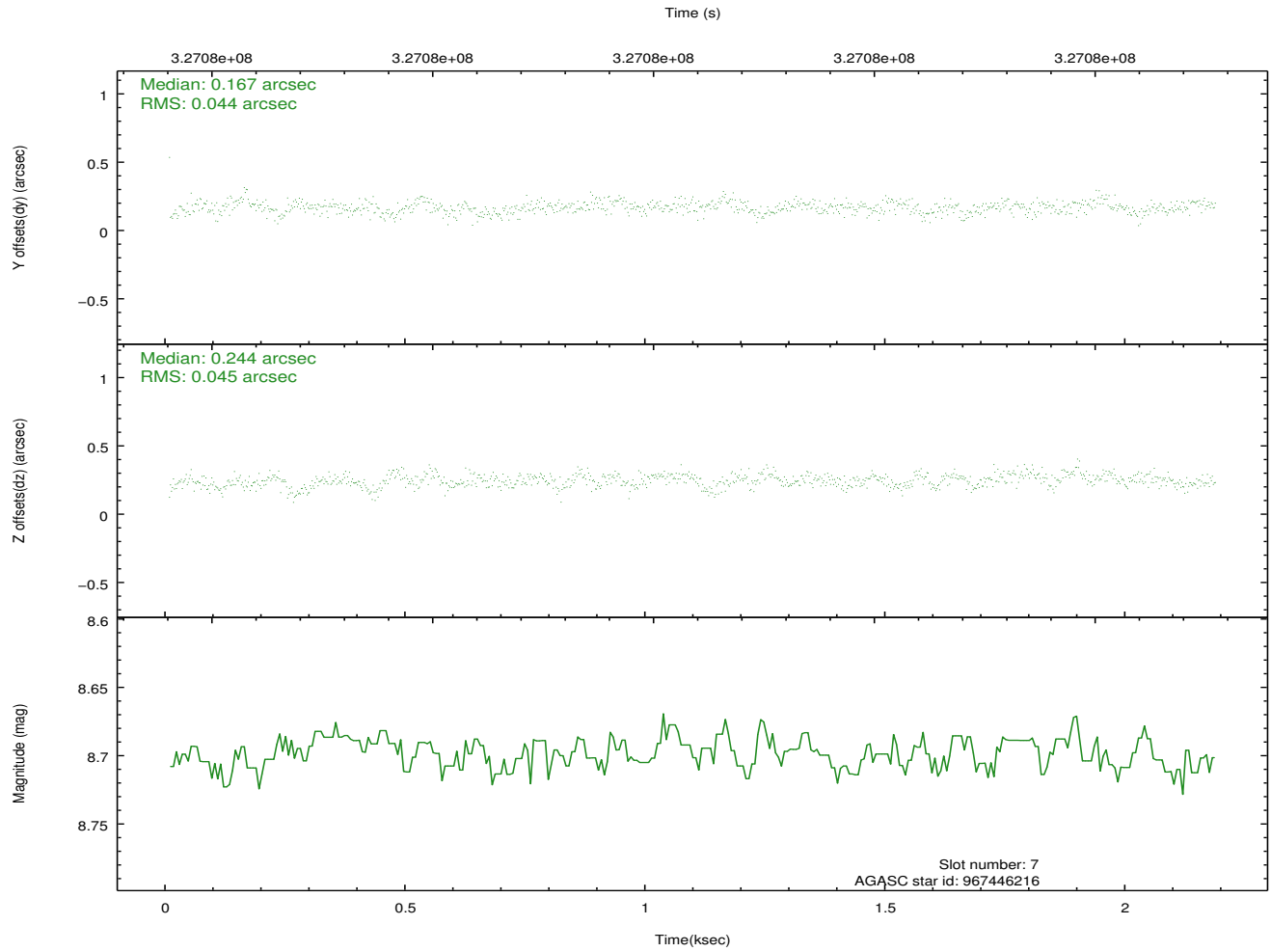
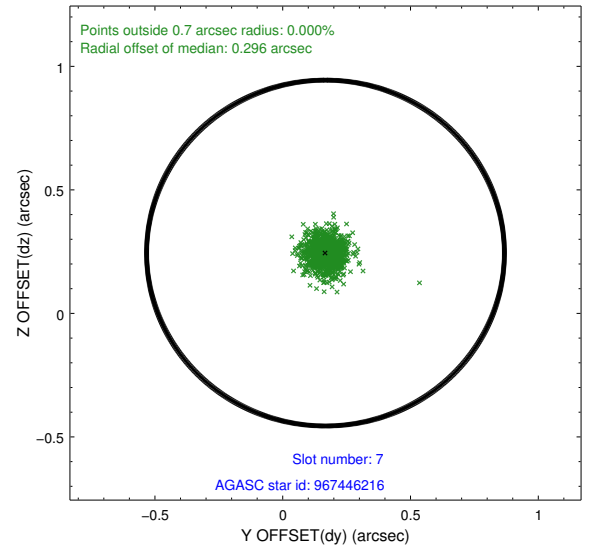
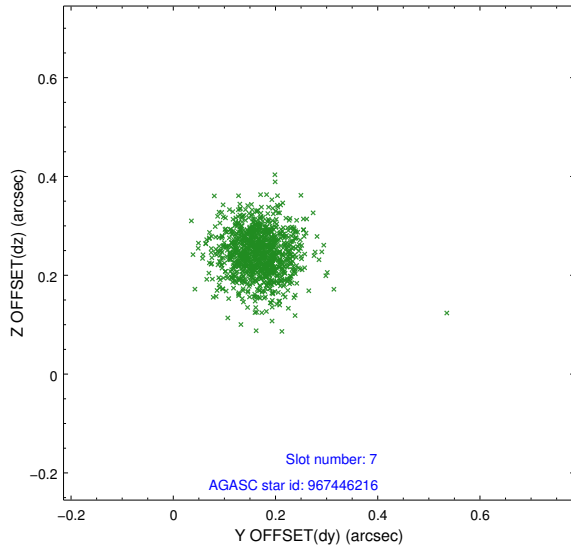
2.4.3 Slot 5



2.4.4 Slot 6

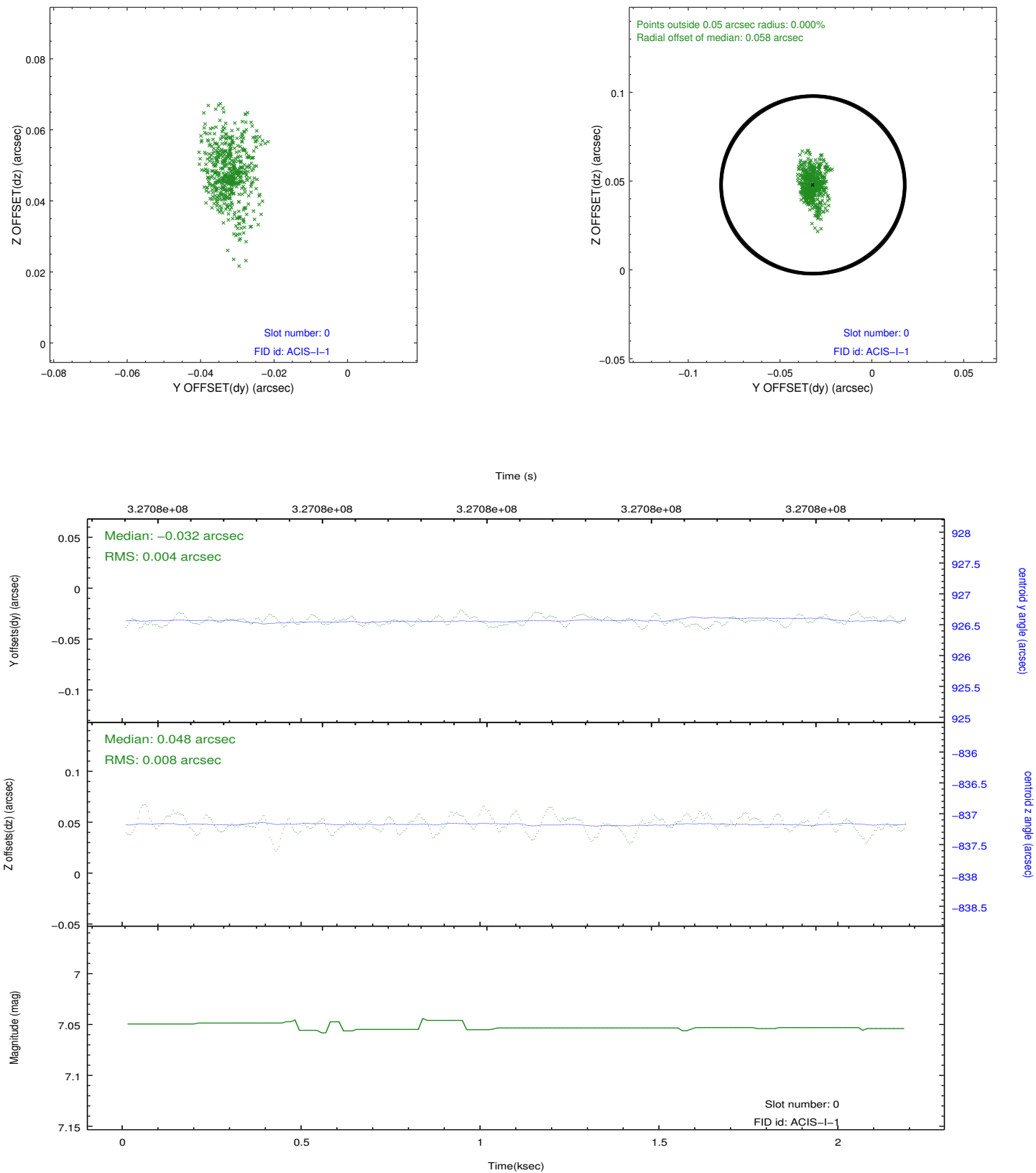


2.4.5 Slot 7

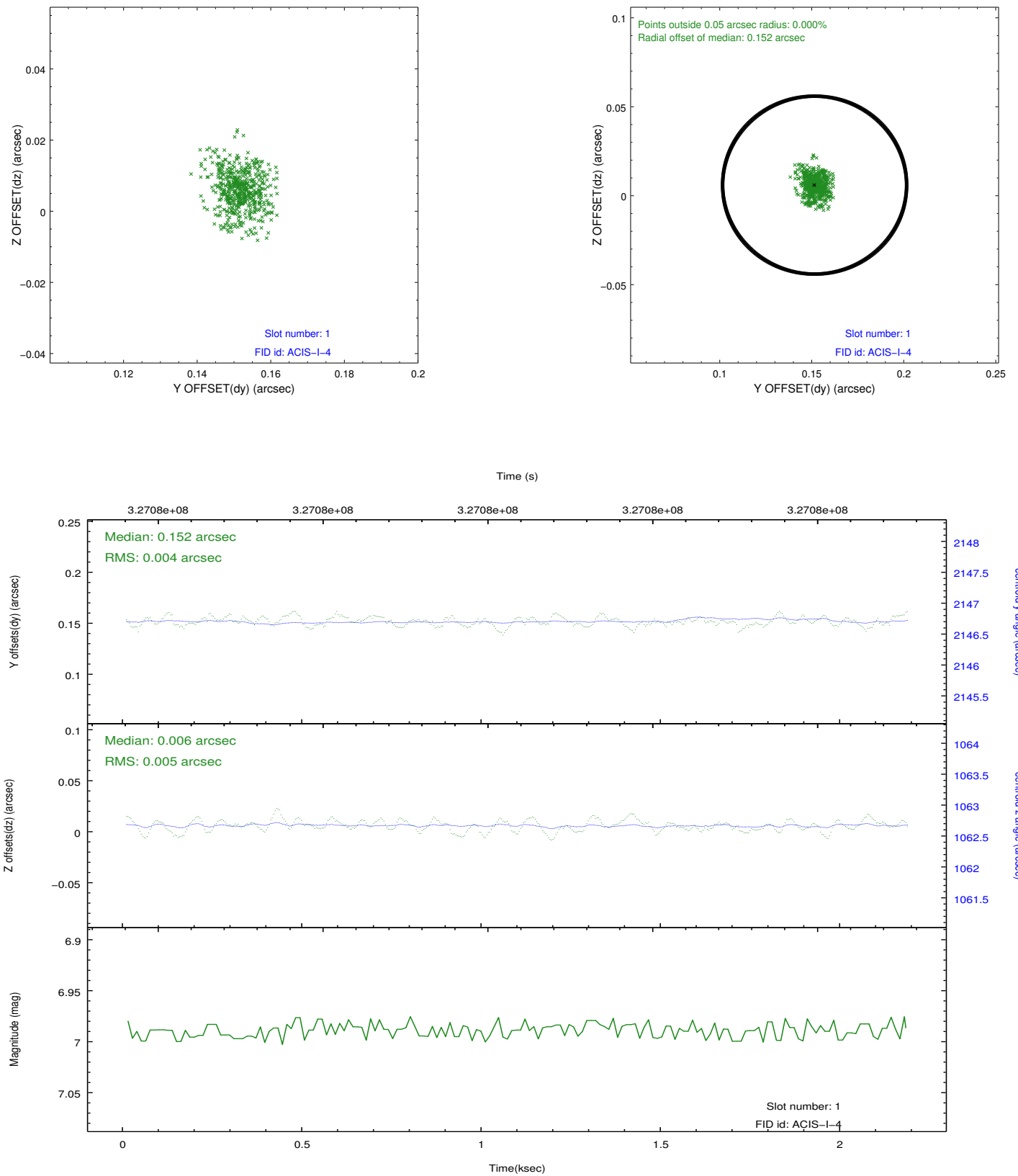


2.5 FID Slots

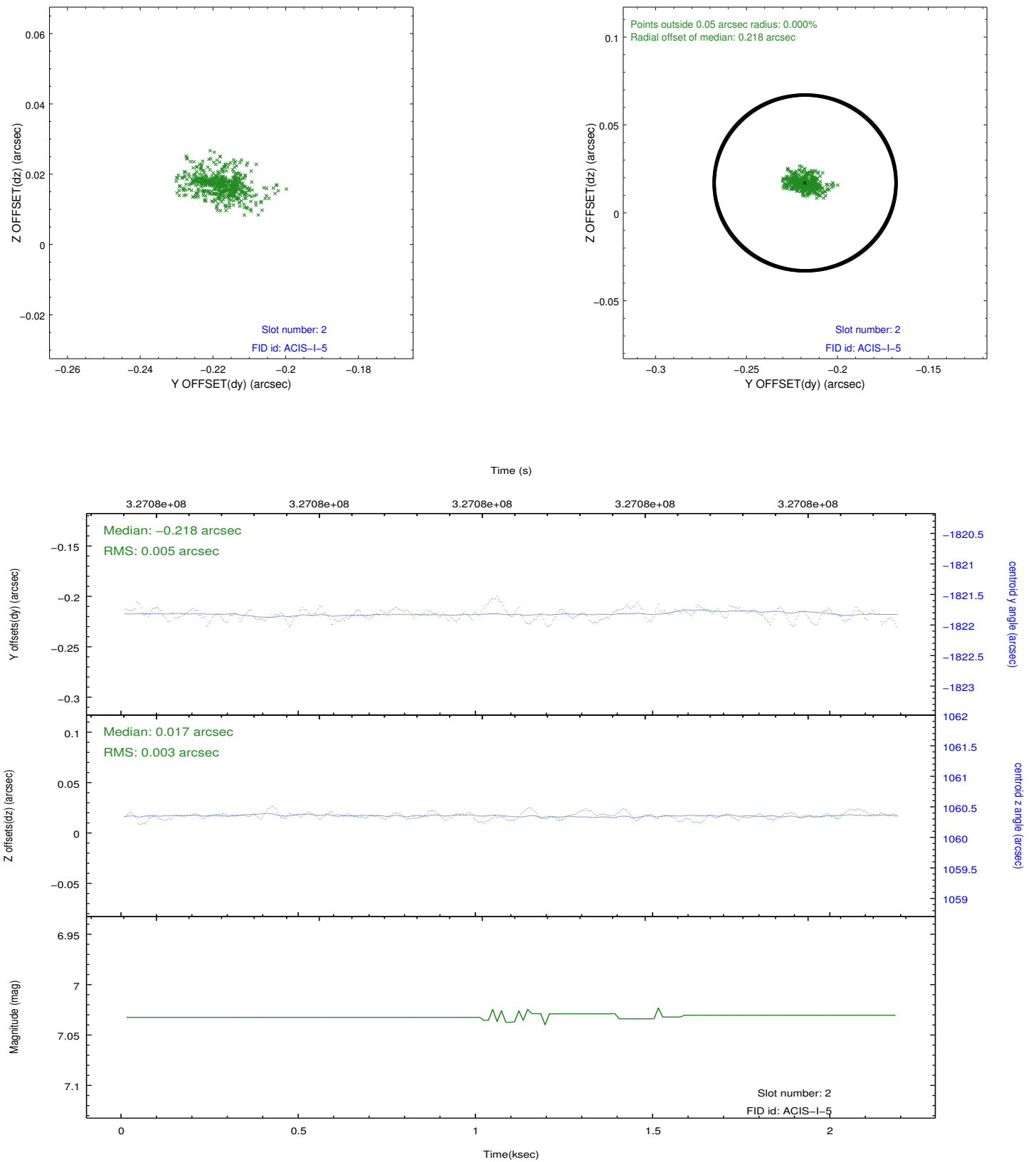
2.5.1 Slot 0



2.5.2 Slot 1



2.5.3 Slot 2



A Summary

A.1 Status

V&V Scientist	Jen Lauer
V&V Date (YYYY-MM-DD)	2012.05.16
V&V Edition	1
V&V Disposition and Status	OK
V&V Charge Time	2.18240001

A.2 Comments

Joint Proposal: NOAO