

V&V Reference Report

L2 ASCDS Version : 8.4.4

Observation 10871 - L2 Version 2
Chandra X-Ray Center

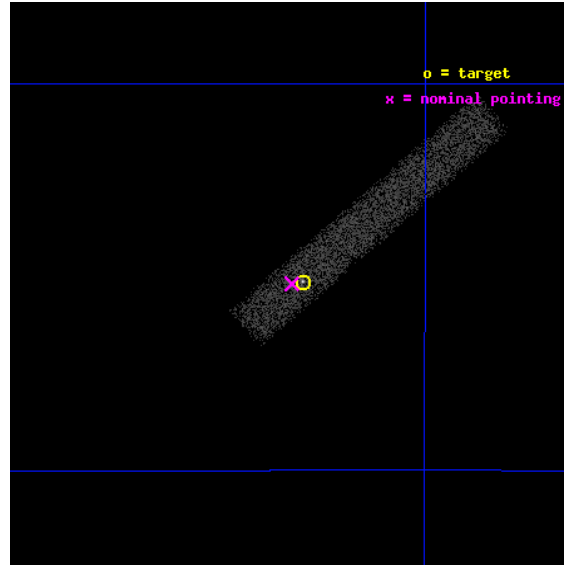
L2 Processing Date : May 31 2012

Contents

1	Front	2
2	OBI	3
2.1	OBI	3
2.1.1	Images	3
2.1.2	Bias	3
2.1.3	Parameters	4
2.1.4	Events	4
2.2	Compared Parameters	5
2.3	Aspect	6
2.4	Star Slots	9
2.4.1	Slot 3	9
2.4.2	Slot 4	10
2.4.3	Slot 5	11
2.4.4	Slot 6	12
2.4.5	Slot 7	13
2.5	FID Slots	14
2.5.1	Slot 0	14
2.5.2	Slot 1	15
2.5.3	Slot 2	16
A	Summary	17
A.1	Status	17
A.2	Comments	17

1 Front

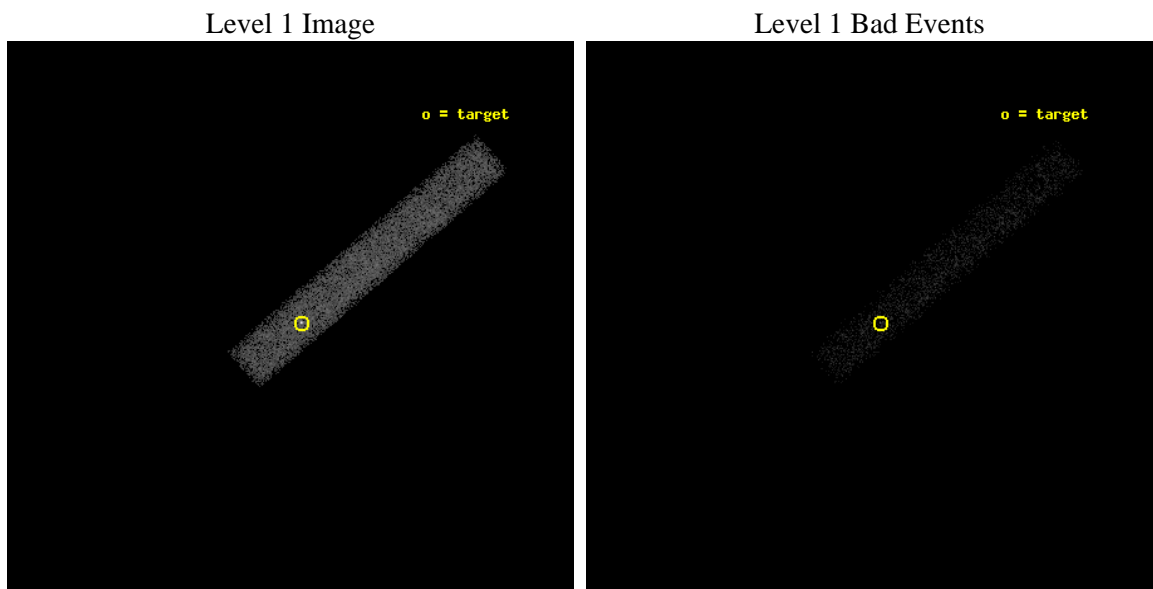
seq_num	400922	Sequence number
obs_id	10871	Observation id
title	Quasi-persistent neutron-star X-ray binaries in quiescence	Proposa
observer	Dr. Rudy Wijnands	Principal investigator
object	EXO 0748-676	Source name
dtcycle	0	
cycle	P	events from which exps? Prim/Second/Both
ra_targ	117.140833	Observer's specified target RA [deg]
dec_targ	-67.7524	Observer's specified target Dec [deg]
ra_nom	117.15339752295	Nominal RA [deg]
dec_nom	-67.753164705154	Nominal Dec [deg]
roll_nom	319.16826834097	Nominal Roll [deg]
revision	2	Processing version of data
ontime	10560.799370527	Sum of GTIs [s]
livetime	9578.0875843708	Livetime [s]
ontime7	10560.799370527	Sum of GTIs [s]
l2events	10810	Number of level 2 events



2 OBI

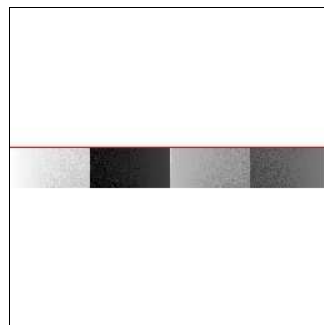
2.1 OBI

2.1.1 Images



2.1.2 Bias

Chip 7



2.1.3 Parameters

obi_num	0	Obi number	sched_exp_time	10384.000000	[s] Scheduled observation exposure time
ascdsver	8.4.4	Processing system revision	ontime	10560.799370527	Sum of GTIs [s]
caldsver	4.4.9	 	ontime7	10560.799370527	Sum of GTIs [s]
date	2012-05-31T14:42:08	Date and time of file creation	l1events	23160	Number of level 1 events
revision	2	Processing version of data			

2.1.4 Events

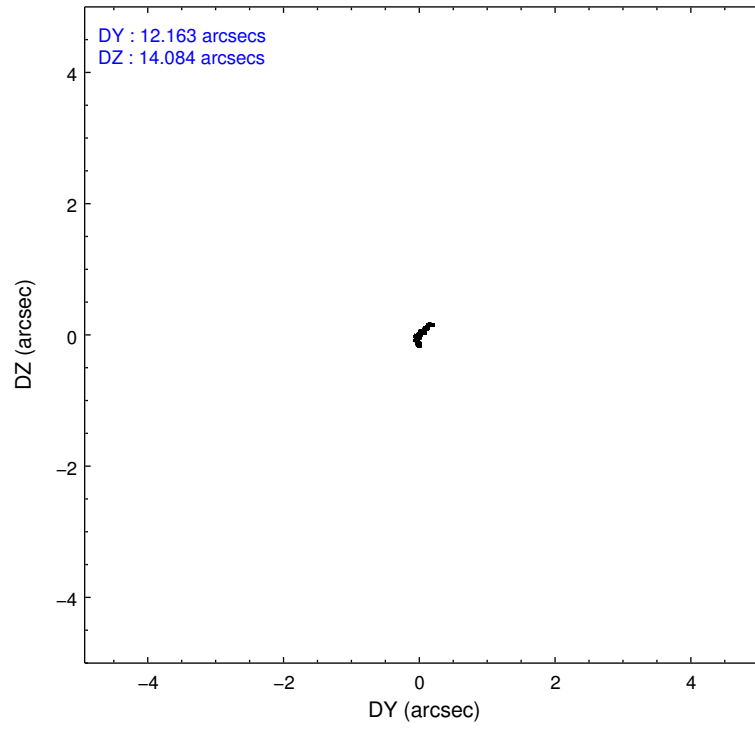
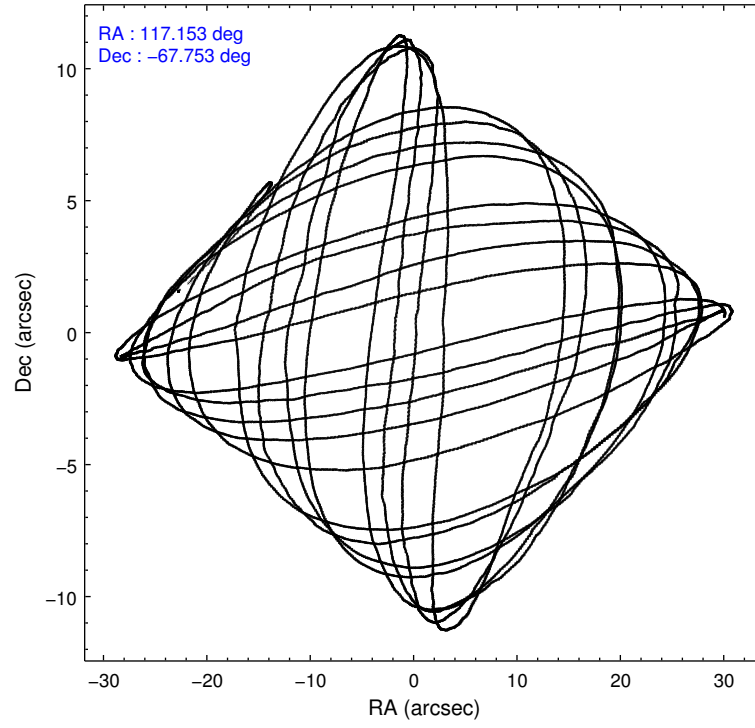
	ccd 7
level 1 events	23160
rejected events	11975
rejected %	51%

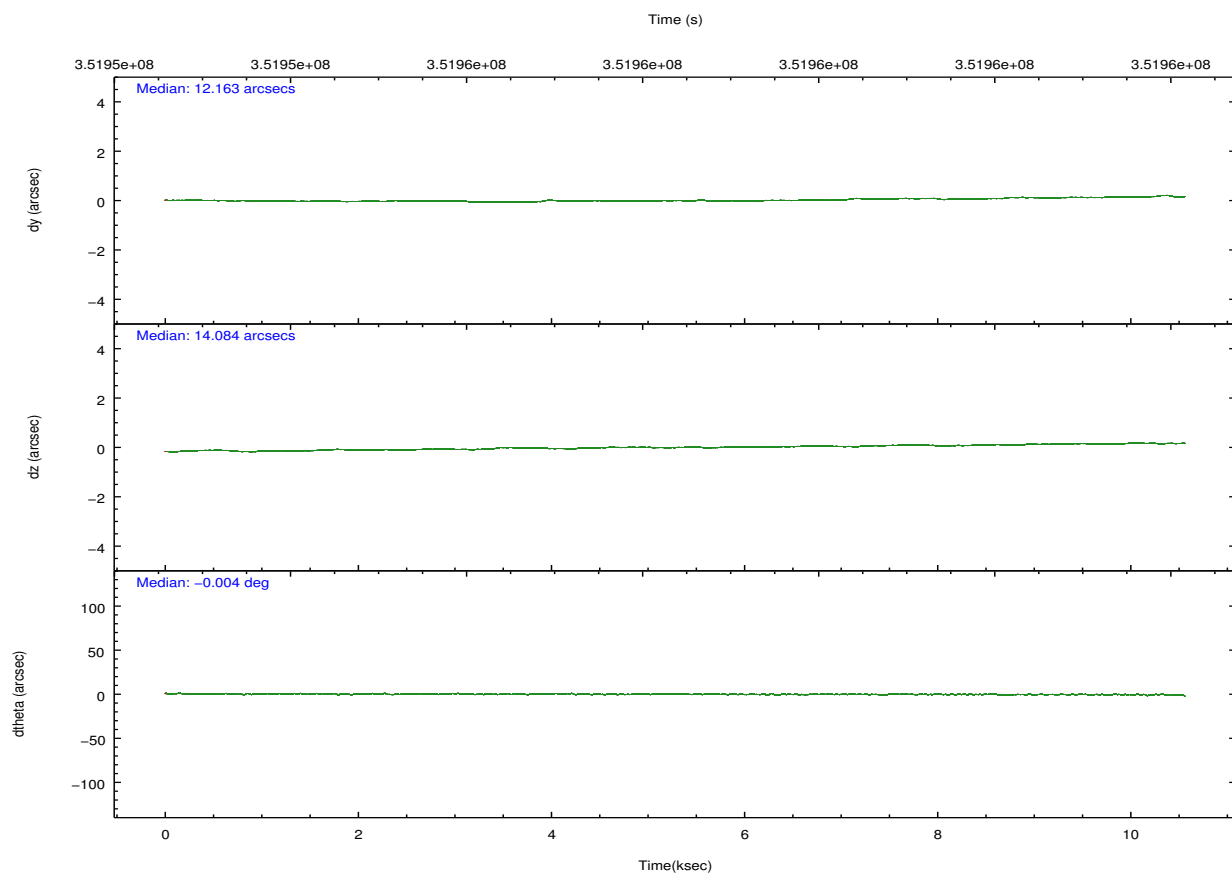
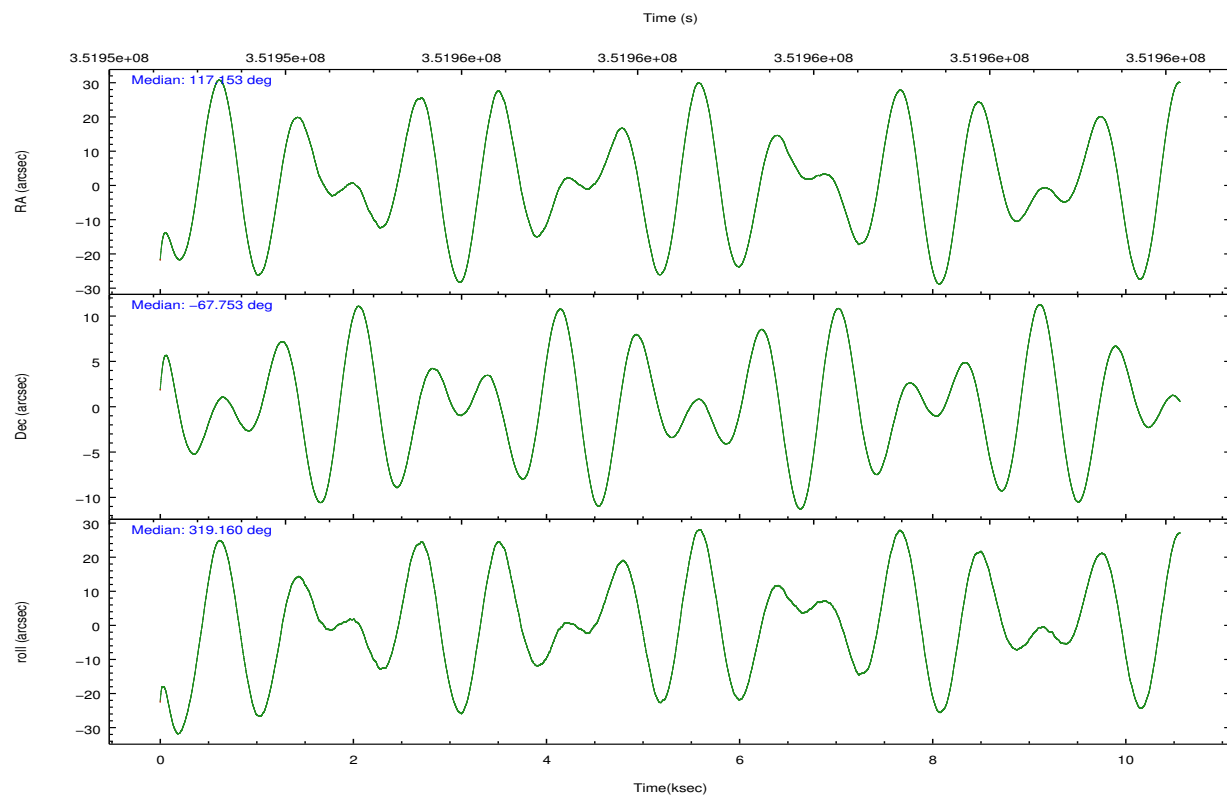
	ccd 7
grade 0 events	1580
	6%
grade 1 events	23
	0%
grade 2 events	2412
	10%
grade 3 events	1422
	6%
grade 4 events	1378
	5%
grade 5 events	1933
	8%
grade 6 events	4975
	21%
grade 7 events	9437
	40%

2.2 Compared Parameters

Parameter	Planned	Actual	Parameter	Planned	Actual
Instrument	ACIS	ACIS	Obspar format version number	7	7
Detector	ACIS-7	ACIS-7	Obspar file type	PREDICTED	ACTUAL
Grating	NONE	NONE	Obspar update status	NONE	UPDATED
Data mode	FAINT	FAINT	Number of optional ACIS chips dropped	0	0
Observation mode	POINTING	POINTING	On-chip summing requested	N	N
[deg] Pointing RA	117.082384	117.1533975229534	Subarray requested	CUSTOM	1/8
[deg] Pointing Dec	-67.748400	-67.75316470515439	Subarray start row	449	449
[deg] Pointing Roll	318.945907	319.168268340975	Subarray row count	128	128
[mm] SIM focus pos	-0.684267	-0.6828225247311905	Alternating exposures requested	N	N
[mm] SIM defocus	0	0.001444936568705701	[s] Primary exposure time	0.000000	0.4
[mm] SIM translation stage pos	-190.132523	-190.1400660498719			
[mm] SIM translation stage offset	0	0.00754346686406393			
[s] Observation start time (MET)	351953265.184000	351952331.38532			
Observation start date	2009-02-25T12:46:39	2009-02-25T12:32:11			
[s] Observation end time (MET)	351963649.184000	351964743.62343			
Observation end date	2009-02-25T15:39:43	2009-02-25T15:59:03			
Read mode	TIMED	TIMED			

2.3 Aspect



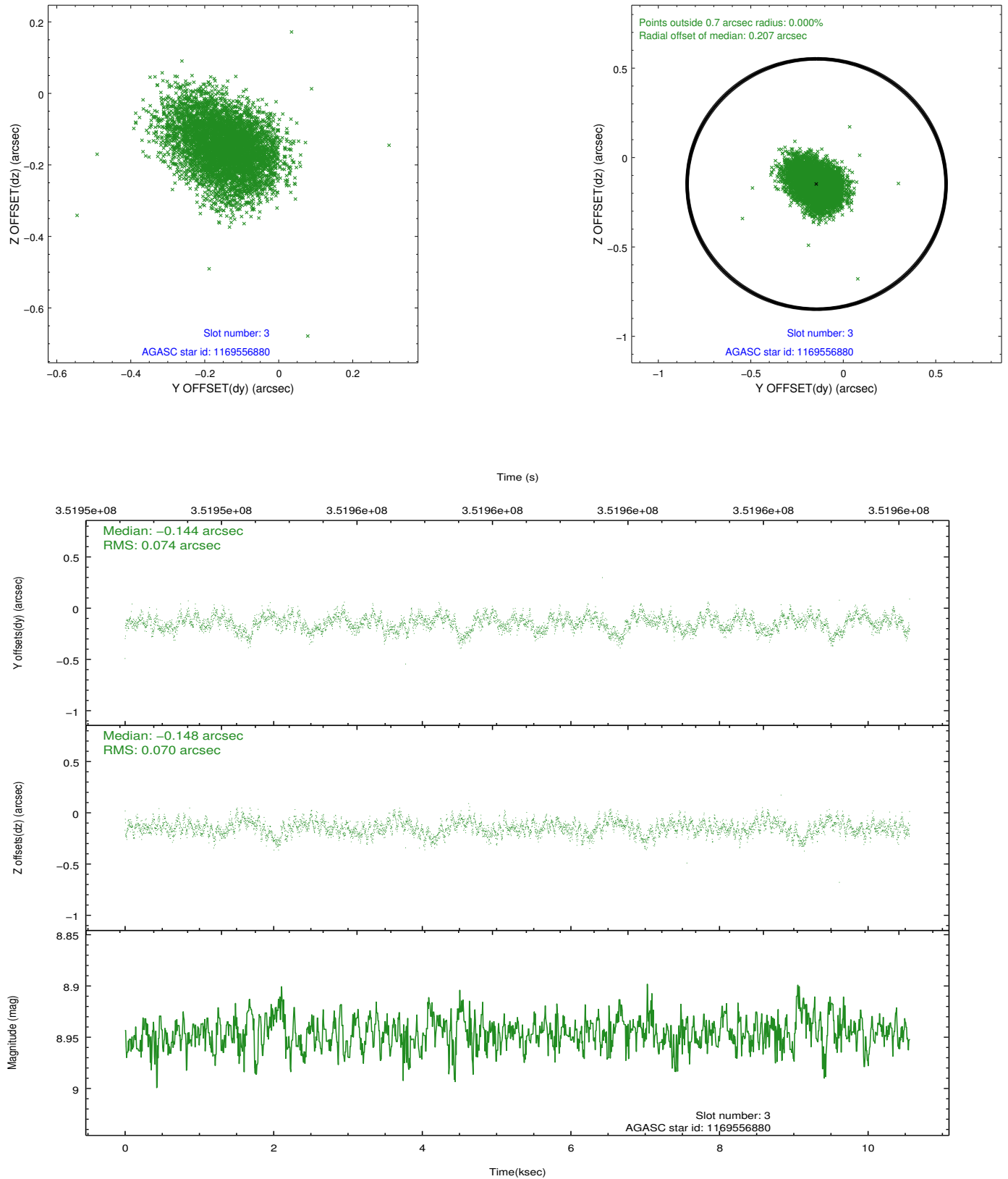


Slot Statistics

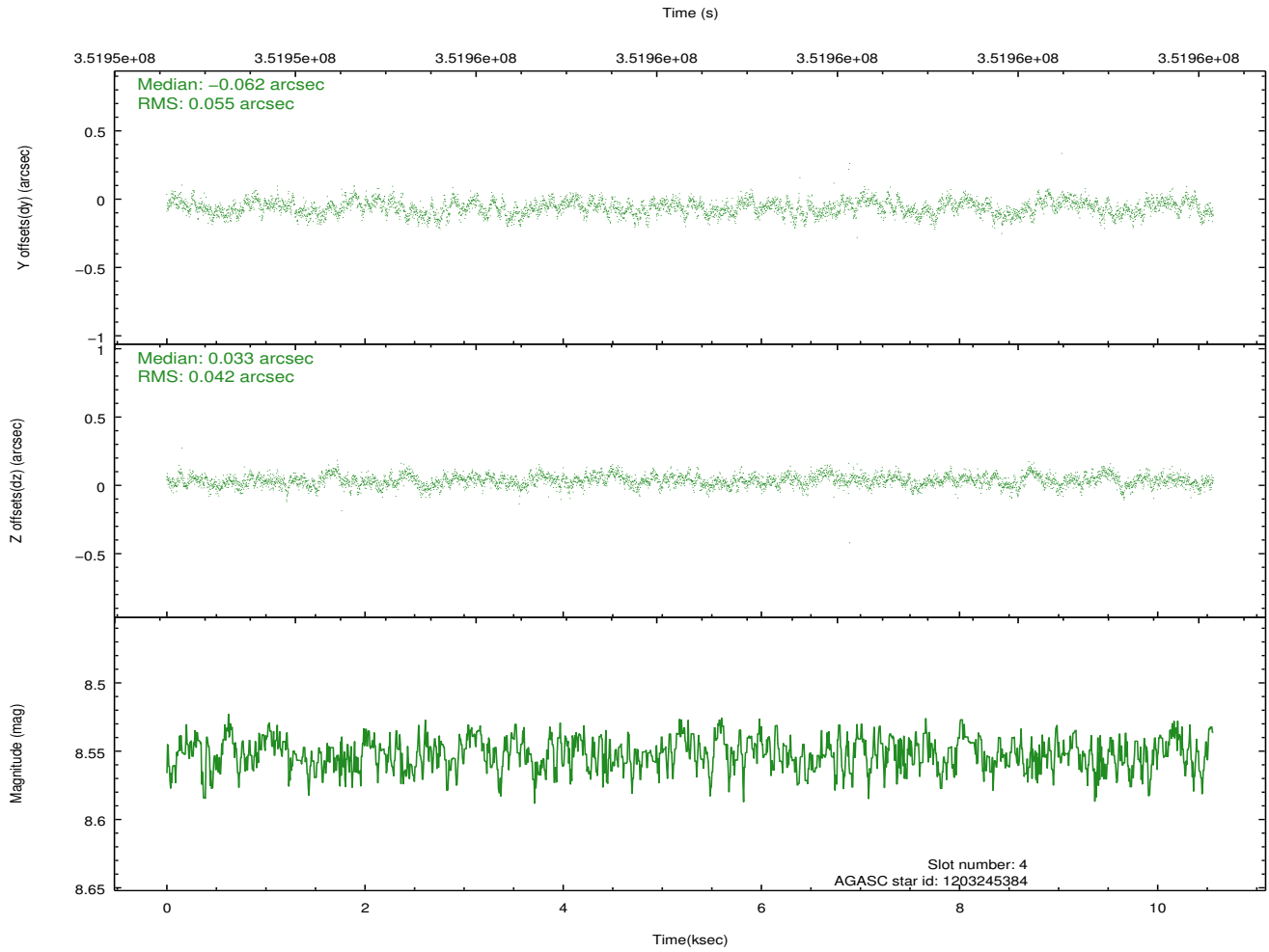
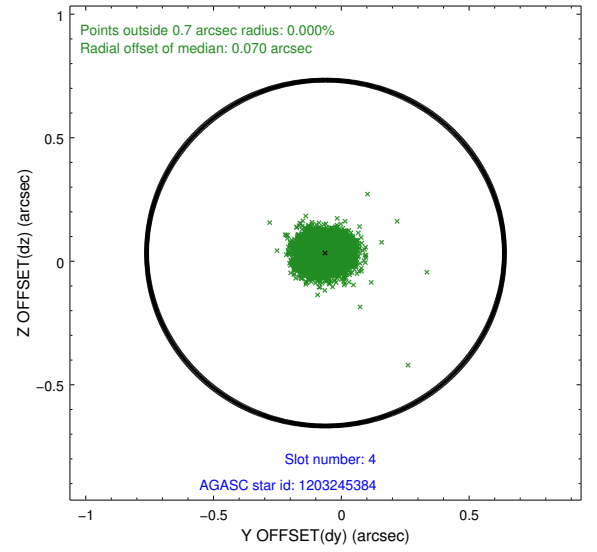
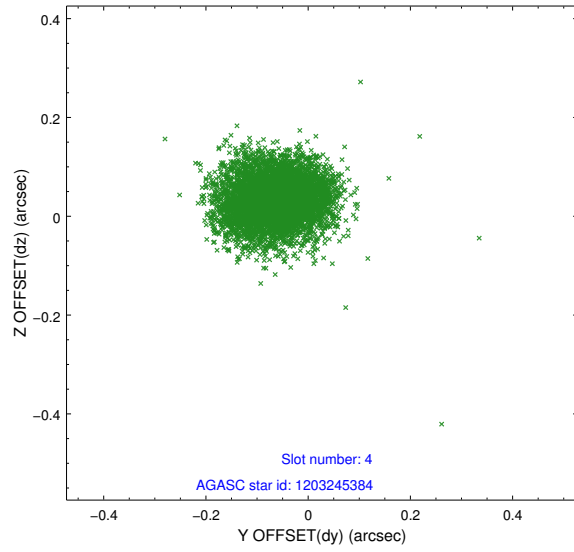
slot	status	id	mag	n_pts	med_dy	med_dz	dr1	dr2	ra	dec	mean_y	mean_z
0	FID	ACIS-S-2	6.92	2577	-0.031	-0.025	0.007	0.011	0.000000	0.000000	-765.10	-1735.47
1	FID	ACIS-S-4	7.01	2577	0.119	0.022	0.007	0.013	0.000000	0.000000	2148.09	172.56
2	FID	ACIS-S-5	7.04	2577	-0.120	0.012	0.007	0.011	0.000000	0.000000	-1817.41	166.77
3	GUIDE	1169556880	8.95	5147	-0.144	-0.148	0.108	0.175	118.476472	-67.455164	772.03	2043.54
4	GUIDE	1203245384	8.55	5151	-0.062	0.033	0.073	0.118	117.096059	-68.354351	1447.25	-1632.48
5	GUIDE	1203251672	8.90	5150	0.092	-0.083	0.074	0.120	119.305207	-67.693266	2196.07	2102.94
6	GUIDE	1203257328	9.75	5145	0.051	0.095	0.123	0.193	116.686345	-67.749877	-401.49	-359.76
7	GUIDE	1203248984	9.67	5144	0.064	0.104	0.143	0.221	117.212023	-68.341440	1533.18	-1496.35

2.4 Star Slots

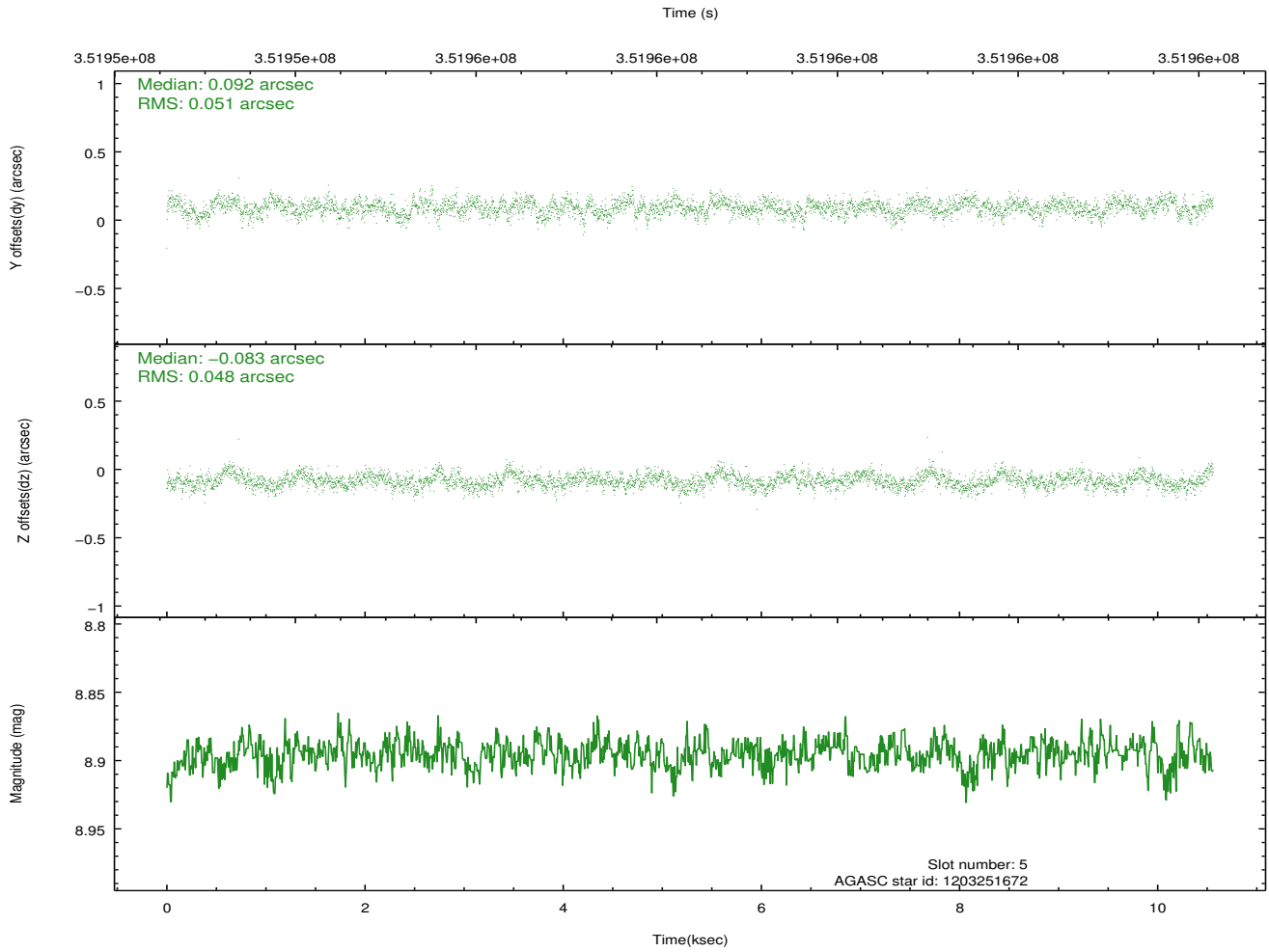
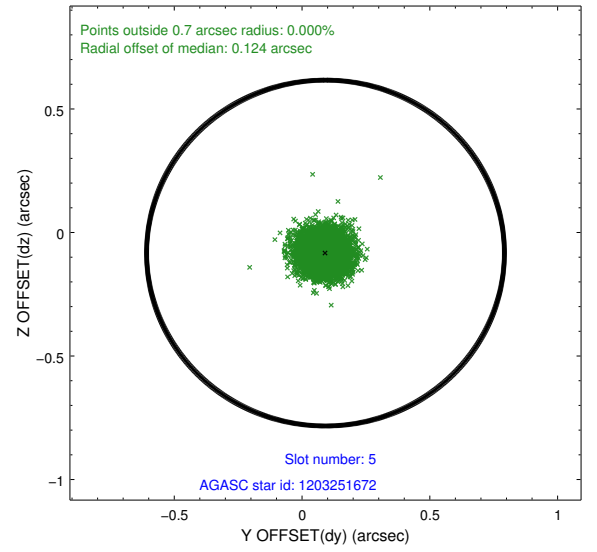
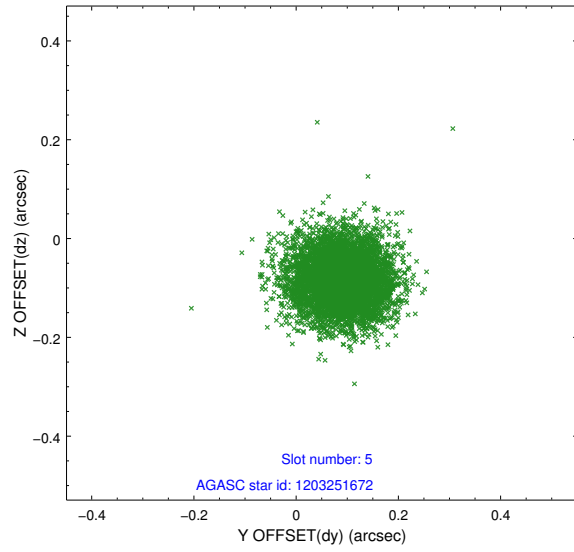
2.4.1 Slot 3



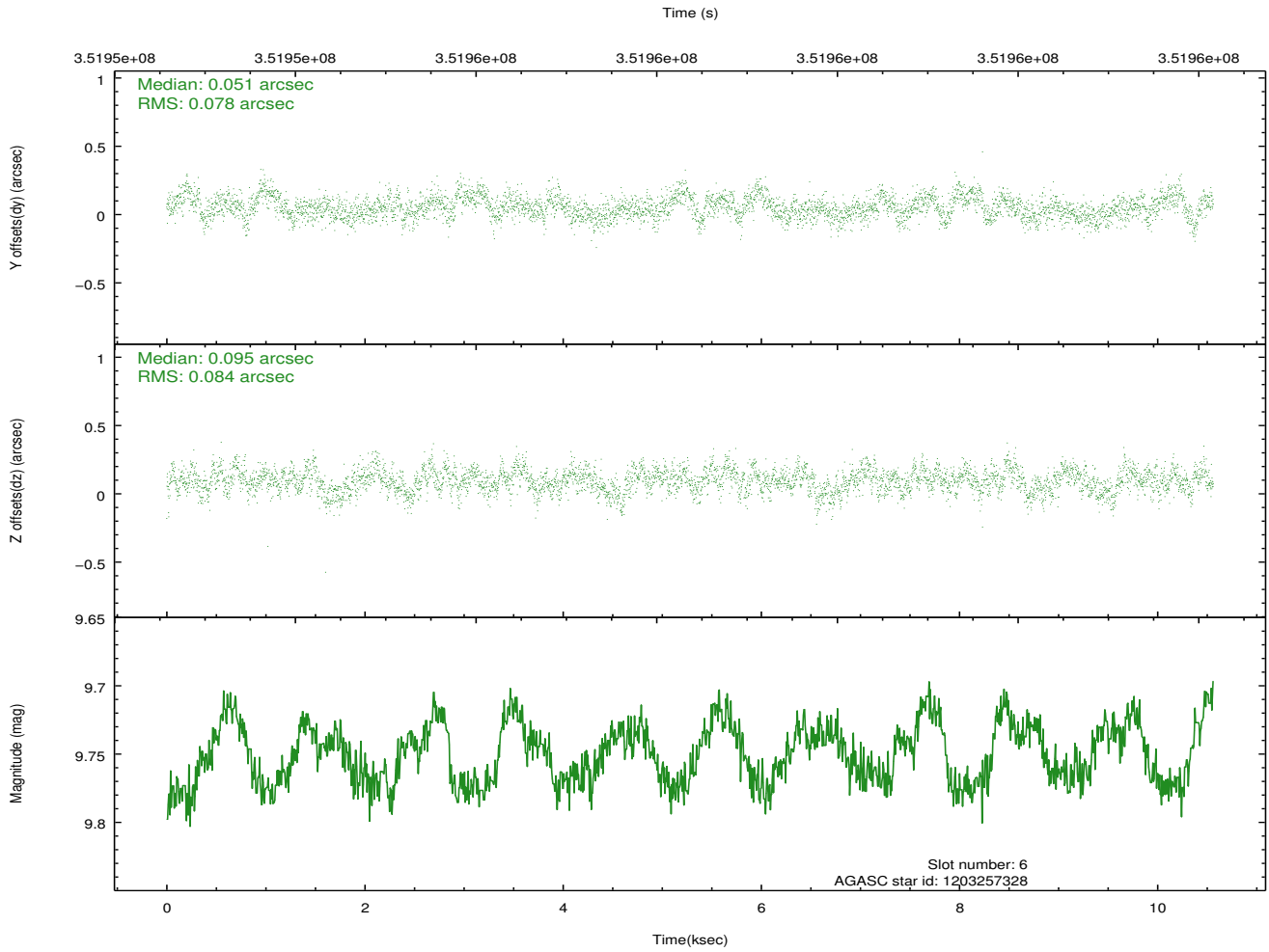
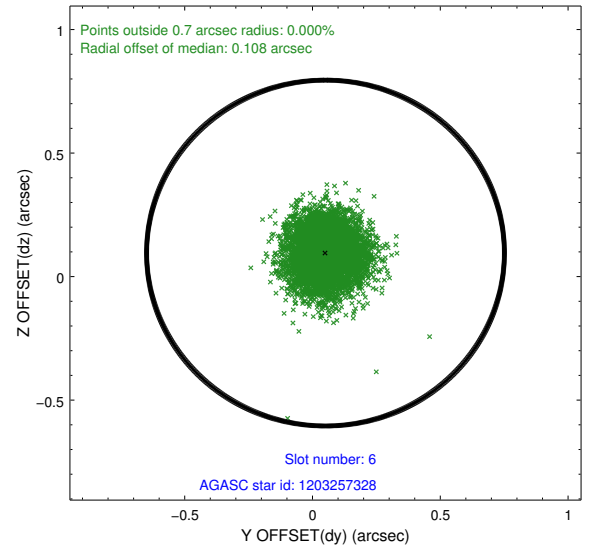
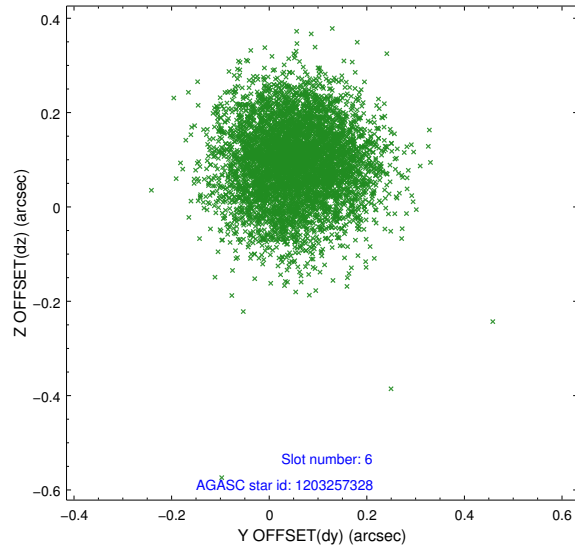
2.4.2 Slot 4



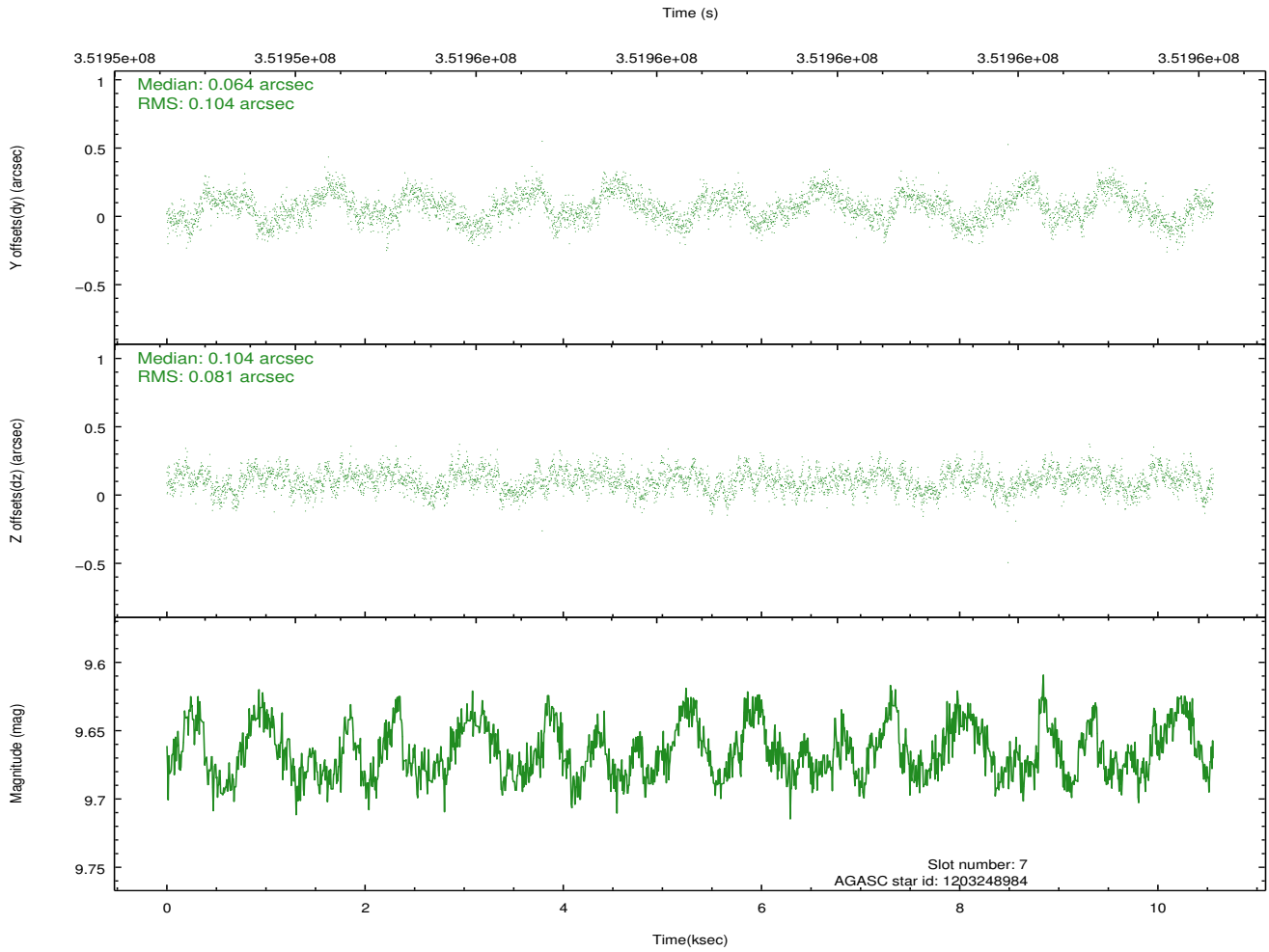
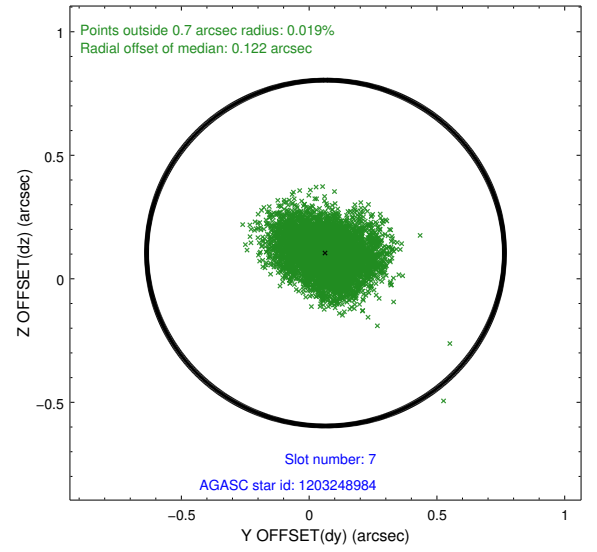
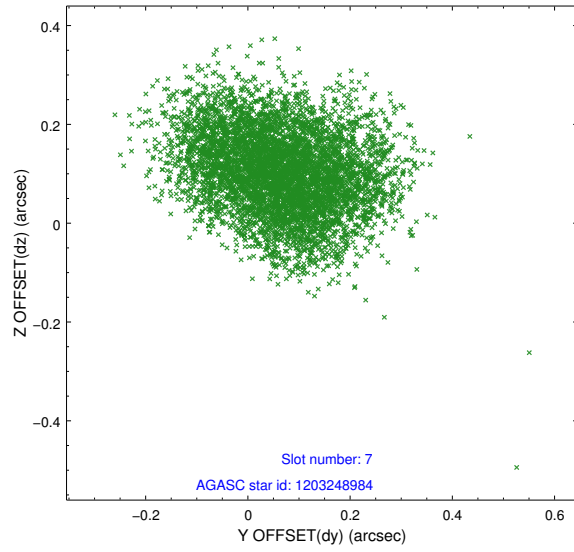
2.4.3 Slot 5



2.4.4 Slot 6

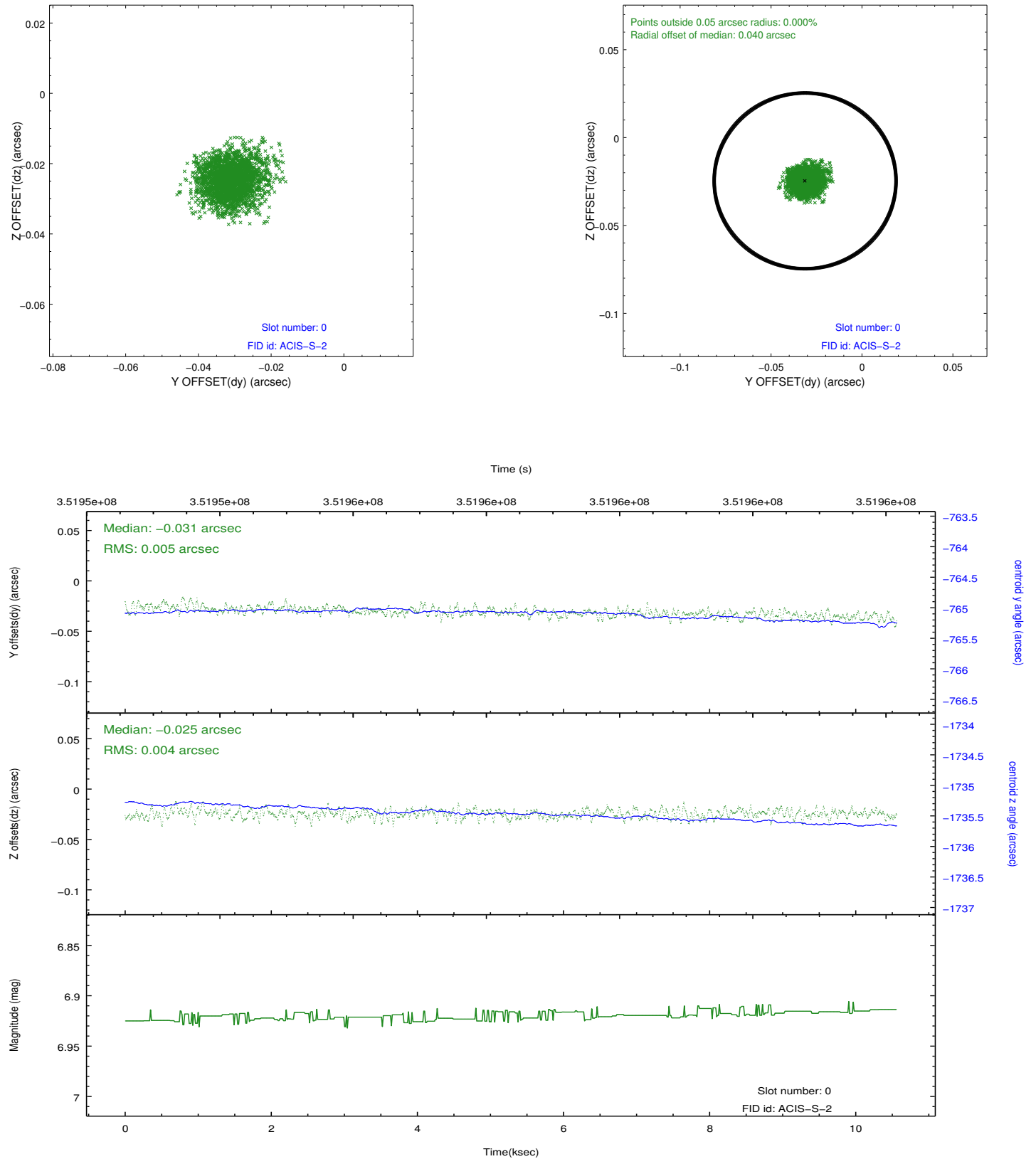


2.4.5 Slot 7

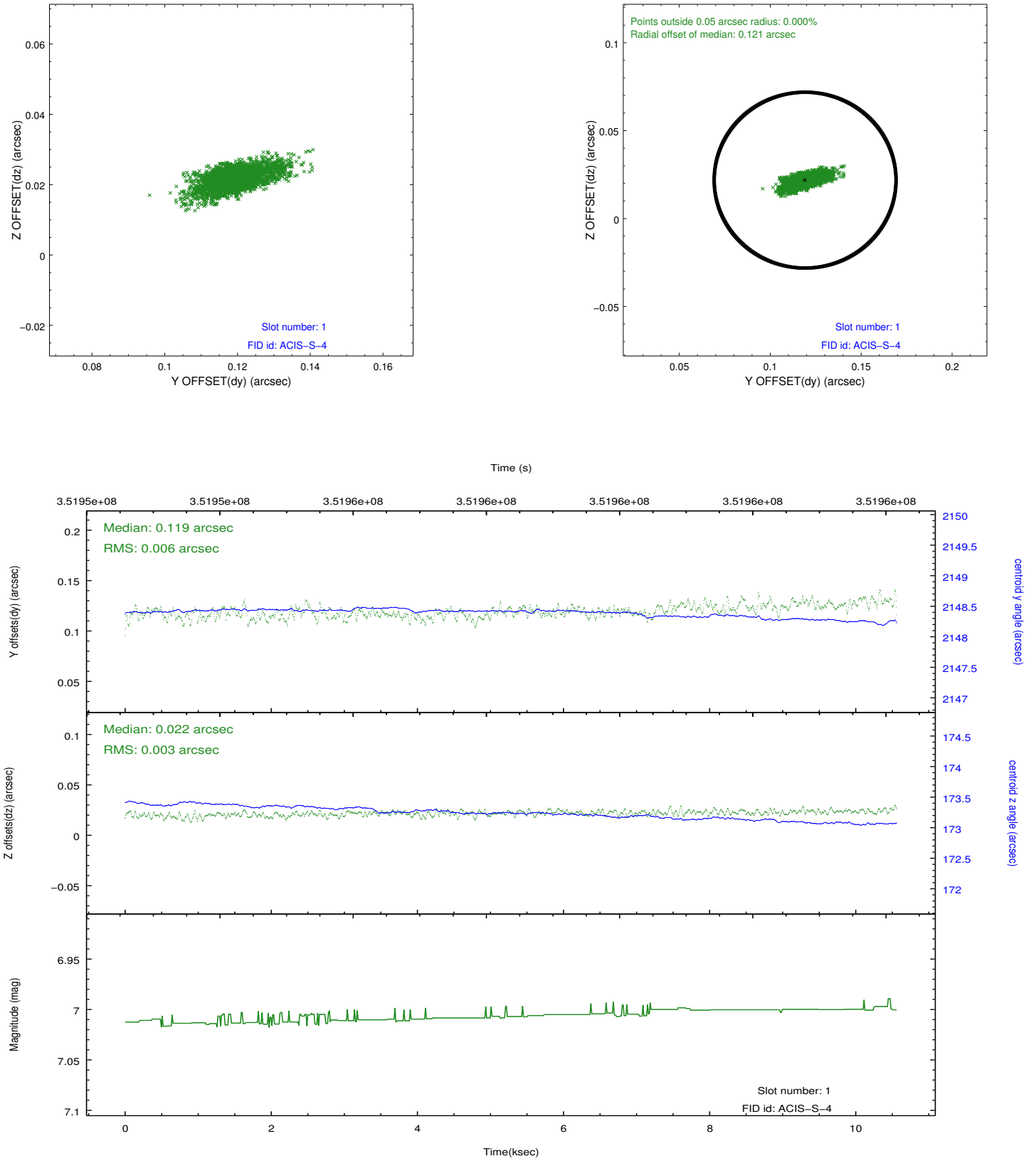


2.5 FID Slots

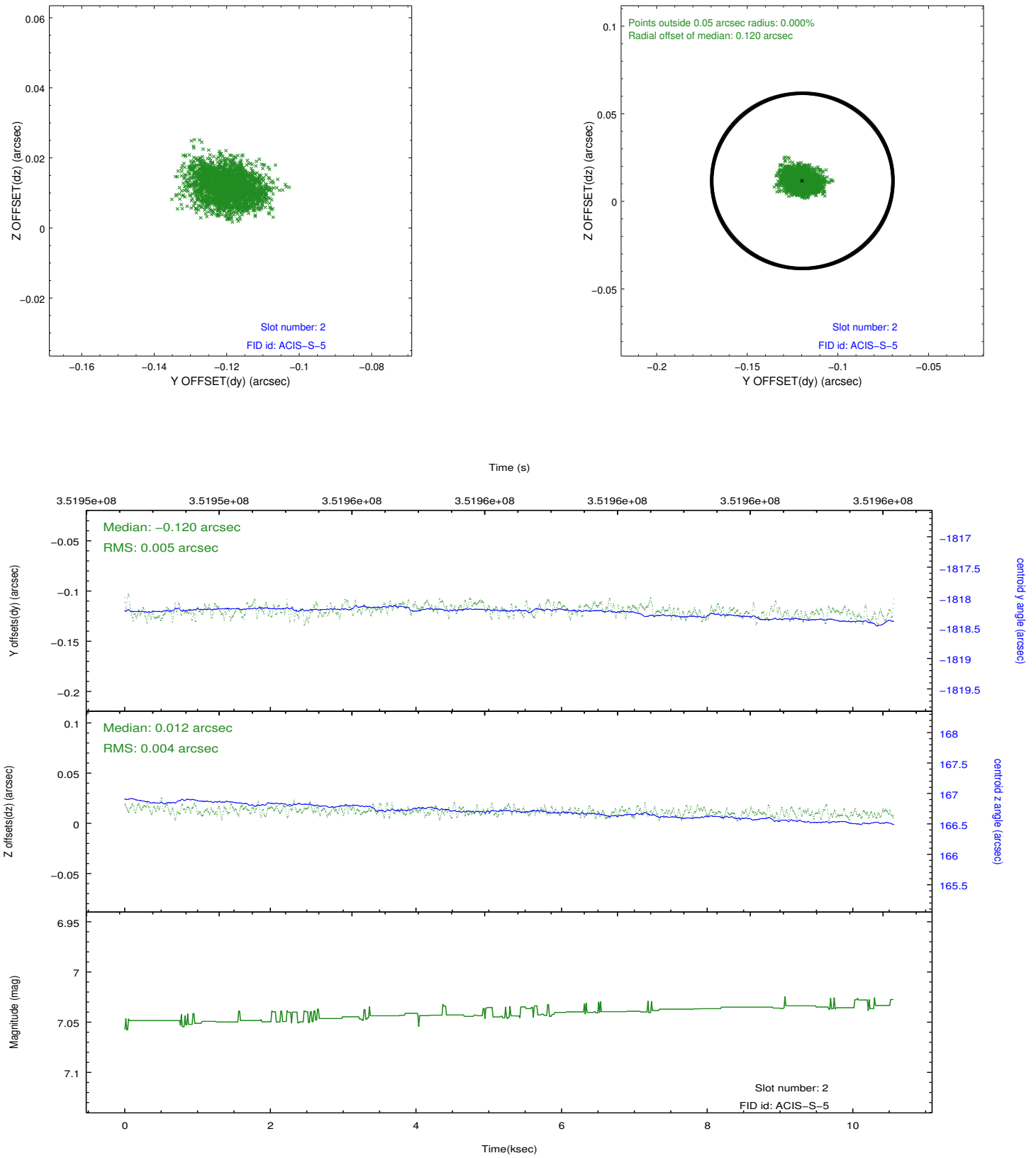
2.5.1 Slot 0



2.5.2 Slot 1



2.5.3 Slot 2



A Summary

A.1 Status

V&V Scientist	Beth Sundheim
V&V Date (YYYY-MM-DD)	2012.06.05
V&V Edition	1
V&V Disposition and Status	OK
V&V Charge Time	10.5607993

A.2 Comments