

# V&V Reference Report

## L2 ASCDS Version : 8.4.4

Observation 8959 - L2 Version 2  
Chandra X-Ray Center

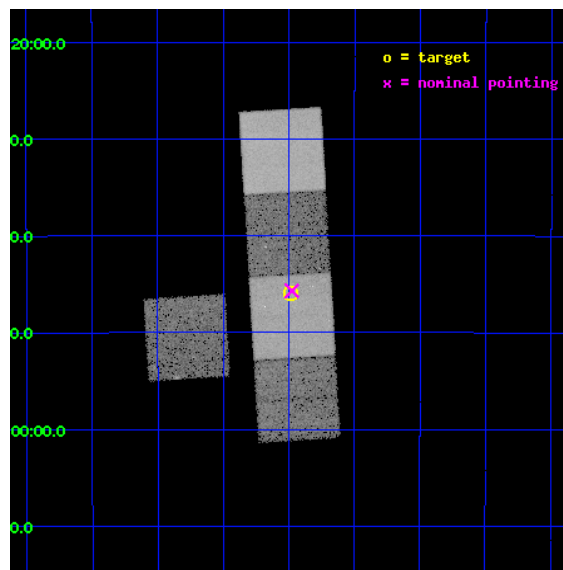
L2 Processing Date : May 30 2012

## Contents

<b>1</b>	<b>Front</b>	<b>2</b>
<b>2</b>	<b>OBI</b>	<b>3</b>
2.1	OBI . . . . .	3
2.1.1	Images . . . . .	3
2.1.2	Bias . . . . .	3
2.1.3	Parameters . . . . .	4
2.1.4	Events . . . . .	4
2.2	Compared Parameters . . . . .	5
2.3	Aspect . . . . .	6
2.4	Star Slots . . . . .	9
2.4.1	Slot 3 . . . . .	9
2.4.2	Slot 4 . . . . .	10
2.4.3	Slot 5 . . . . .	11
2.4.4	Slot 6 . . . . .	12
2.4.5	Slot 7 . . . . .	13
2.5	FID Slots . . . . .	14
2.5.1	Slot 0 . . . . .	14
2.5.2	Slot 1 . . . . .	15
2.5.3	Slot 2 . . . . .	16
<b>A</b>	<b>Summary</b>	<b>17</b>
A.1	Status . . . . .	17
A.2	Comments . . . . .	17

# 1 Front

seq_num	300215	Sequence number
obs_id	8959	Observation id
title	A Chandra Legacy Survey of Dynamically Active Globular Clusters	Pr
observer	Prof. David Pooley	Principal investigator
object	NGC 6325	Source name
dtcycle	0	&#160
cycle	P	events from which exps? Prim/Second/Both
ra_targ	259.496667	Observer's specified target RA [deg]
dec_targ	-23.765833	Observer's specified target Dec [deg]
ra_nom	259.49419715143	Nominal RA [deg]
dec_nom	-23.761567996932	Nominal Dec [deg]
roll_nom	86.541072393935	Nominal Roll [deg]
revision	2	Processing version of data
ontime	16938.386216938	Sum of GTIs [s]
livetime	16717.073731156	Livetime [s]
ontime3	16938.263096929	Sum of GTIs [s]
ontime5	16938.345176935	Sum of GTIs [s]
ontime6	16932.02221626	Sum of GTIs [s]
ontime7	16938.386216938	Sum of GTIs [s]
ontime8	16935.081066728	Sum of GTIs [s]
l2events	209049	Number of level 2 events

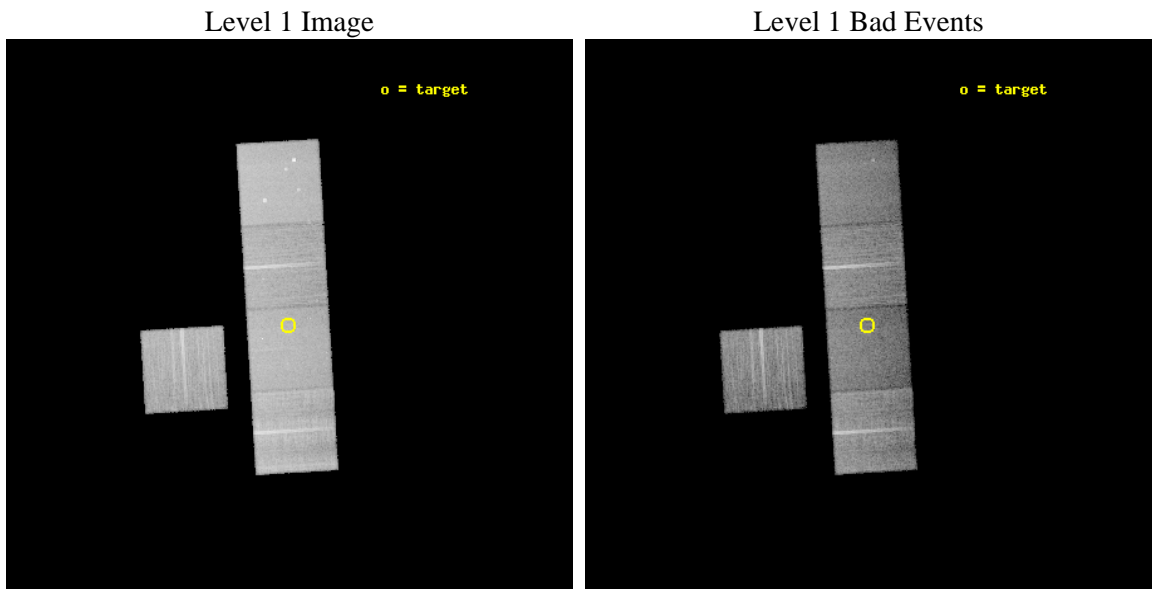




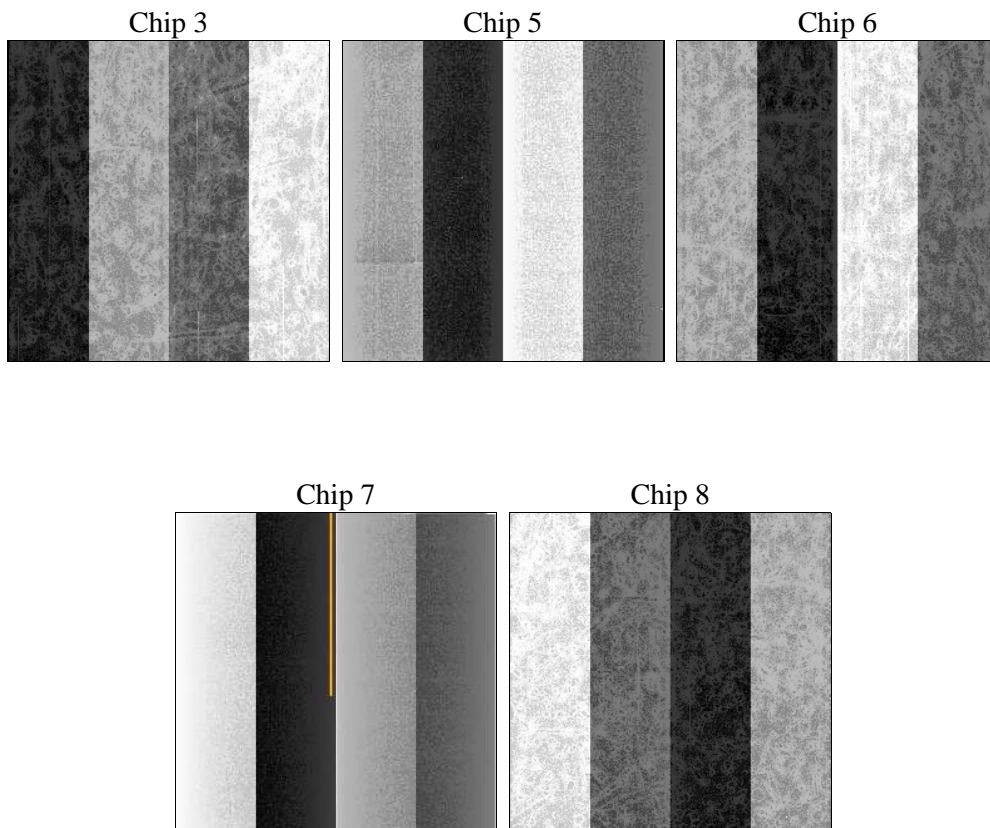
## 2 OBI

### 2.1 OBI

#### 2.1.1 Images



#### 2.1.2 Bias



### 2.1.3 Parameters

obi_num	1	Obi number	sched_exp_time	16900.000000	[s] Scheduled observation exposure time
ascdsver	8.4.4	Processing system revision	ontime	16938.386216938	Sum of GTIs [s]
caldsver	4.4.9	&#160	ontime3	16938.263096929	Sum of GTIs [s]
date	2012-05-30T06:27:23	Date and time of file creation	ontime5	16938.345176935	Sum of GTIs [s]
revision	2	Processing version of data	ontime6	16932.02221626	Sum of GTIs [s]
			ontime7	16938.386216938	Sum of GTIs [s]
			ontime8	16935.081066728	Sum of GTIs [s]
			l1events	827539	Number of level 1 events

### 2.1.4 Events

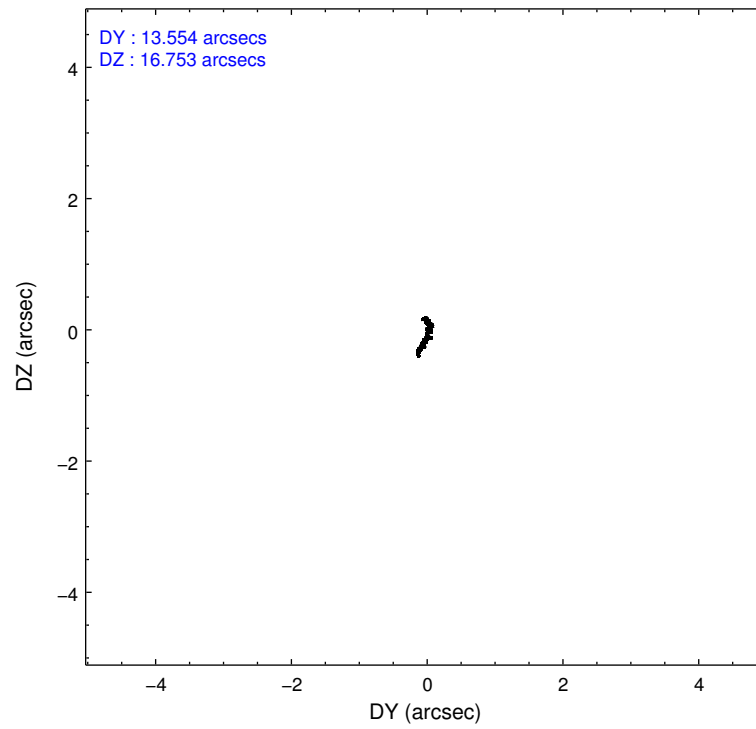
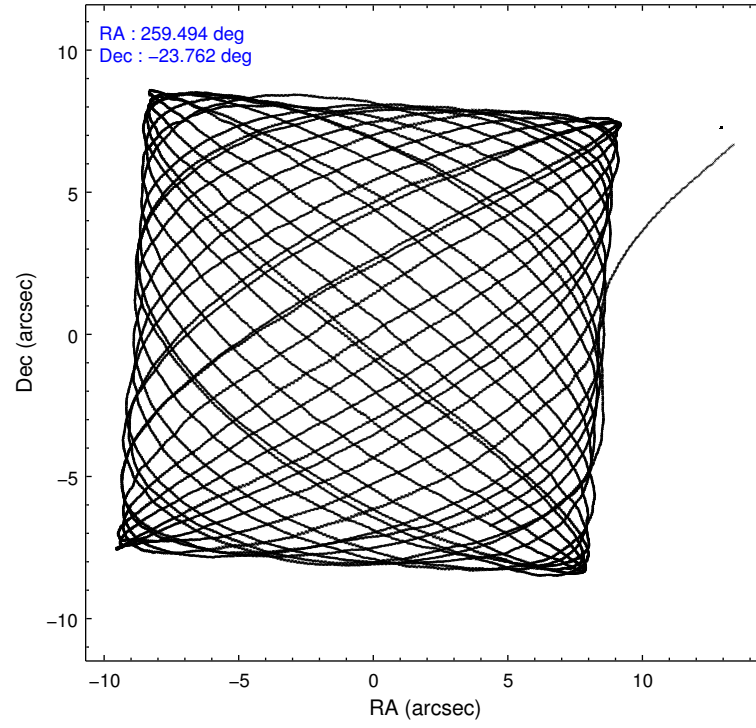
	ccd 3	ccd 5	ccd 6	ccd 7	ccd 8
level 1 events	139959	201071	143293	162765	180451
rejected events	126361	100095	127748	87337	134848
rejected %	90%	49%	89%	53%	74%

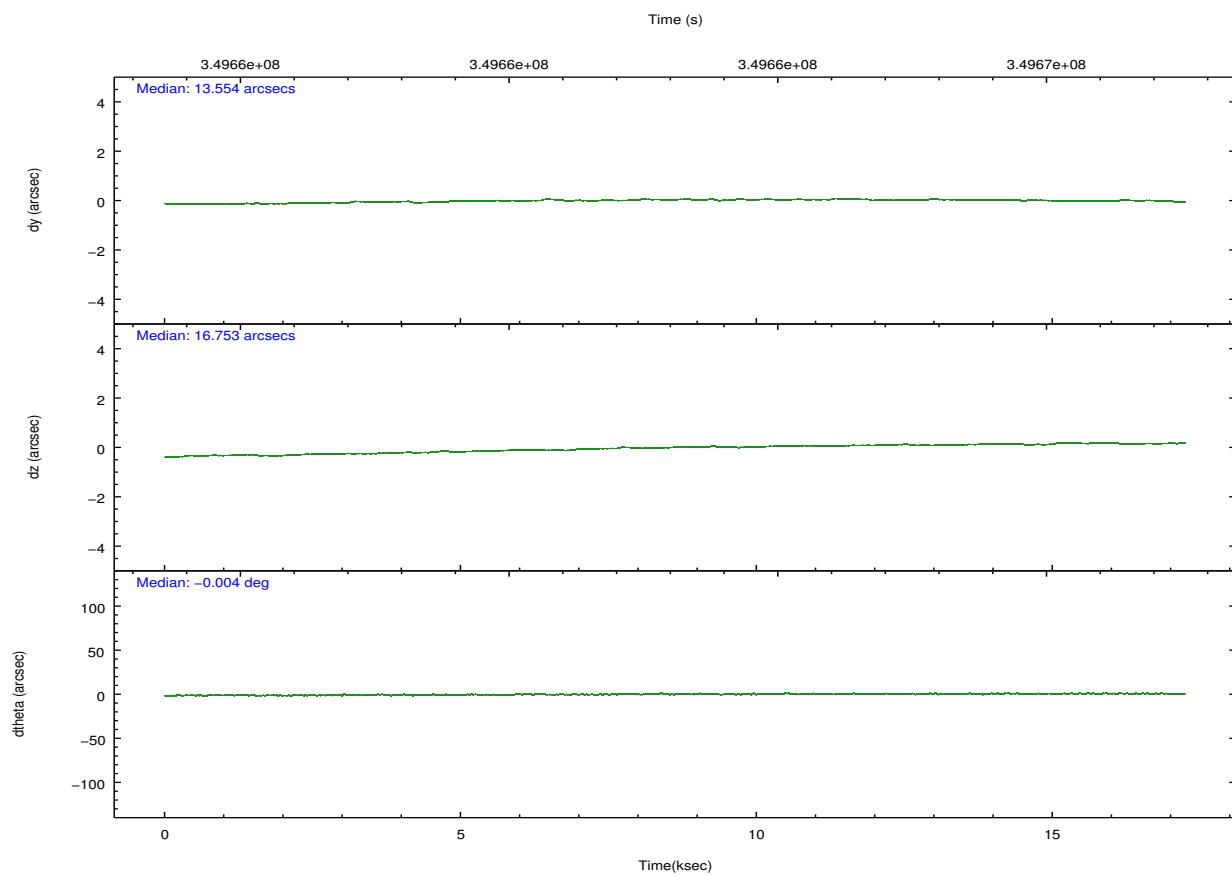
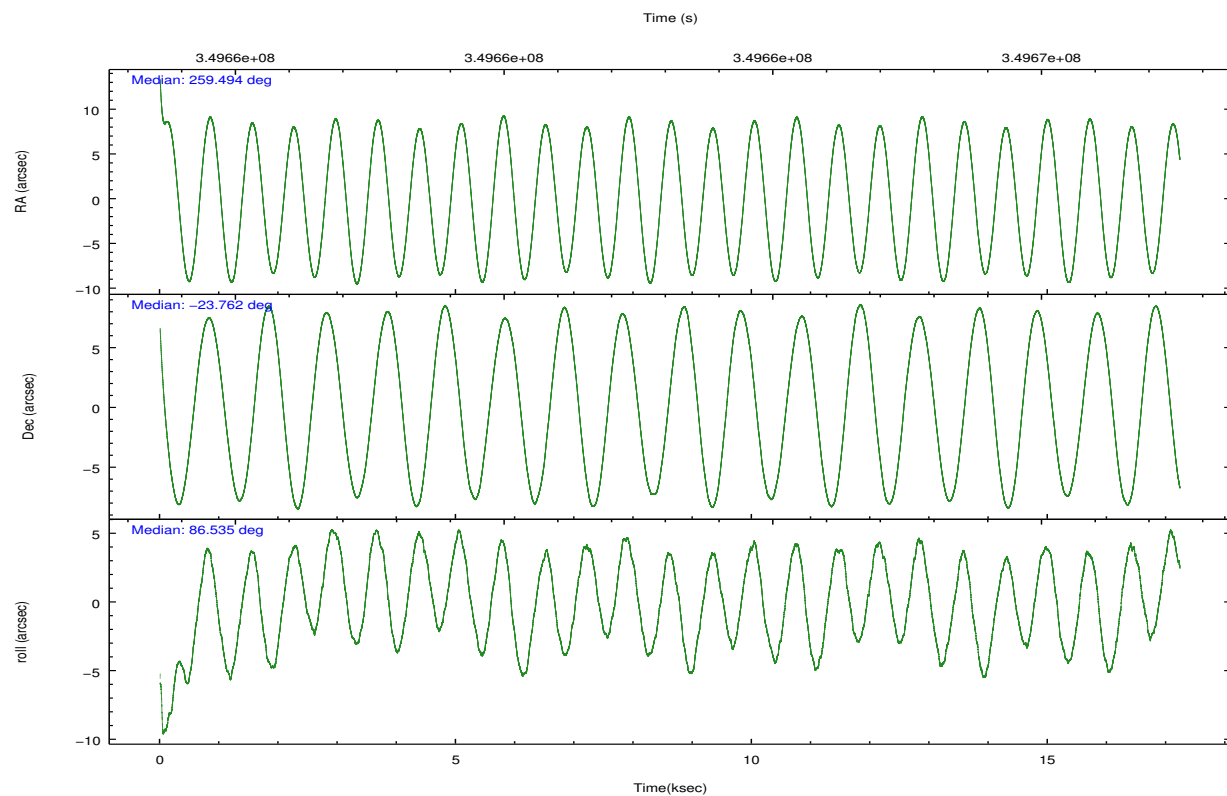
	ccd 3	ccd 5	ccd 6	ccd 7	ccd 8
grade 0 events	4820	10661	5687	7081	14054
	3%	5%	3%	4%	7%
grade 1 events	88	667	71	220	142
	0%	0%	0%	0%	0%
grade 2 events	2981	29958	3404	15741	10551
	2%	14%	2%	9%	5%
grade 3 events	1506	4258	1699	6957	4778
	1%	2%	1%	4%	2%
grade 4 events	1497	4131	1534	7024	4389
	1%	2%	1%	4%	2%
grade 5 events	5664	15953	5884	17296	8551
	4%	7%	4%	10%	4%
grade 6 events	2797	51984	3226	38649	11859
	1%	25%	2%	23%	6%
grade 7 events	120606	83459	121788	69797	126127
	86%	41%	84%	42%	69%

## 2.2 Compared Parameters

Parameter	Planned	Actual	Parameter	Planned	Actual
Instrument	ACIS	ACIS	Obspar format version number	7	7
Detector	ACIS-35678	ACIS-35678	Obspar file type	PREDICTED	ACTUAL
Grating	NONE	NONE	Obspar update status	NONE	UPDATED
Data mode	VFAINT	VFAINT	CCD I0 on	N	N
Observation mode	POINTING	POINTING	CCD I1 on	N	N
[deg] Pointing RA	259.507874	259.4941971514319	CCD I2 on	O1	N
[deg] Pointing Dec	-23.785849	-23.76156799693217	CCD I3 on	O2	Y
[deg] Pointing Roll	86.389964	86.54107239393484	CCD S0 on	N	N
[mm] SIM focus pos	-0.684267	-0.6828225247311905	CCD S1 on	Y	Y
[mm] SIM defocus	0	0.001444936568705701	CCD S2 on	Y	Y
[mm] SIM translation stage pos	-190.132523	-190.1400660498719	CCD S3 on	Y	Y
[mm] SIM translation stage offset	0	0.00754346686406393	CCD S4 on	Y	Y
[s] Observation start time (MET)	349654807.184000	349653799.52131	CCD S5 on	N	N
Observation start date	2009-01-29T22:19:01	2009-01-29T22:03:19	Number of optional ACIS chips dropped	1	1
[s] Observation end time (MET)	349671707.184000	349672143.43472	On-chip summing requested	N	N
Observation end date	2009-01-30T03:00:41	2009-01-30T03:09:03	Subarray requested	NONE	NONE
Read mode	TIMED	TIMED	Alternating exposures requested	N	N
			[s] Primary exposure time	0.000000	3.1

## 2.3 Aspect



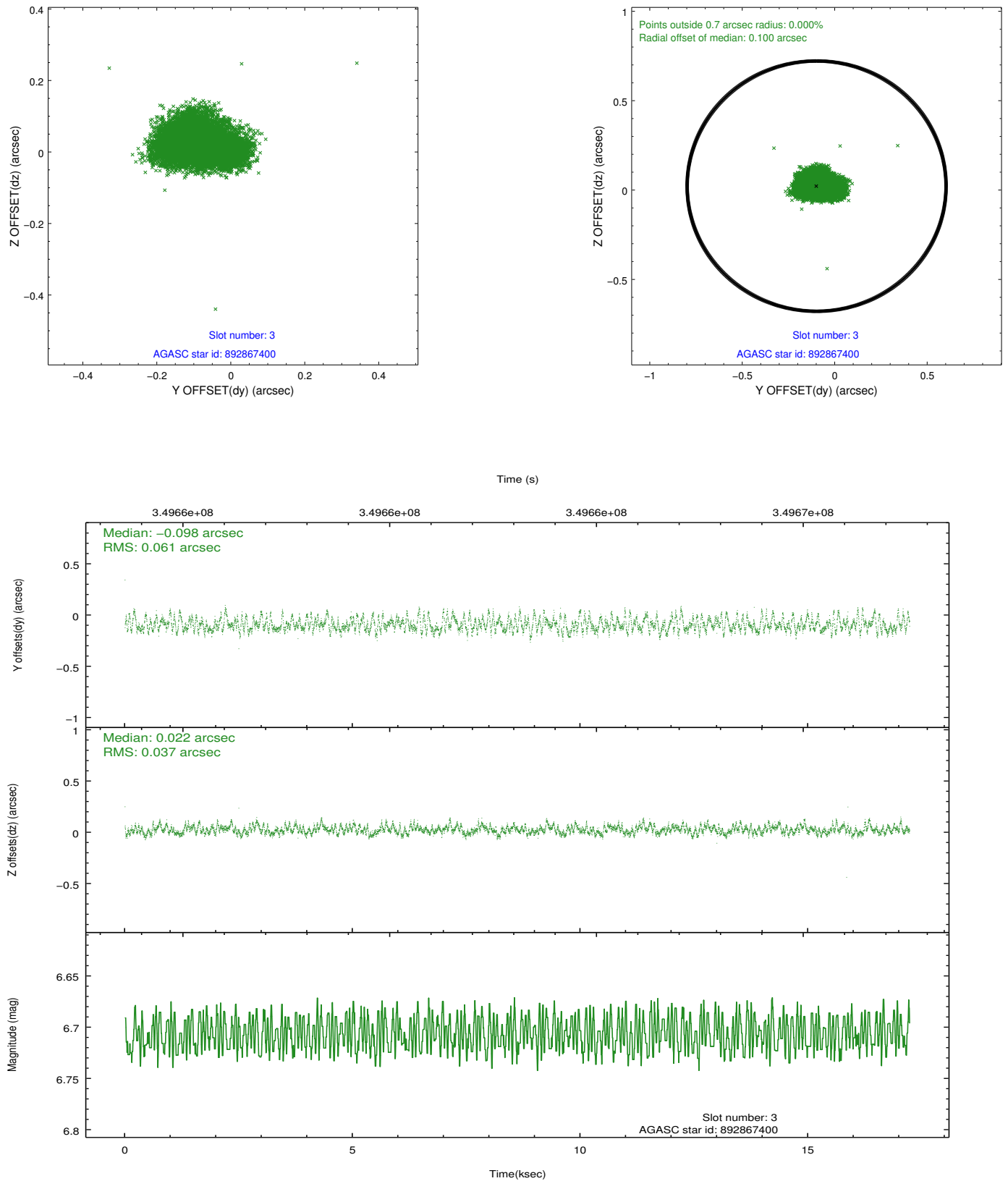


### Slot Statistics

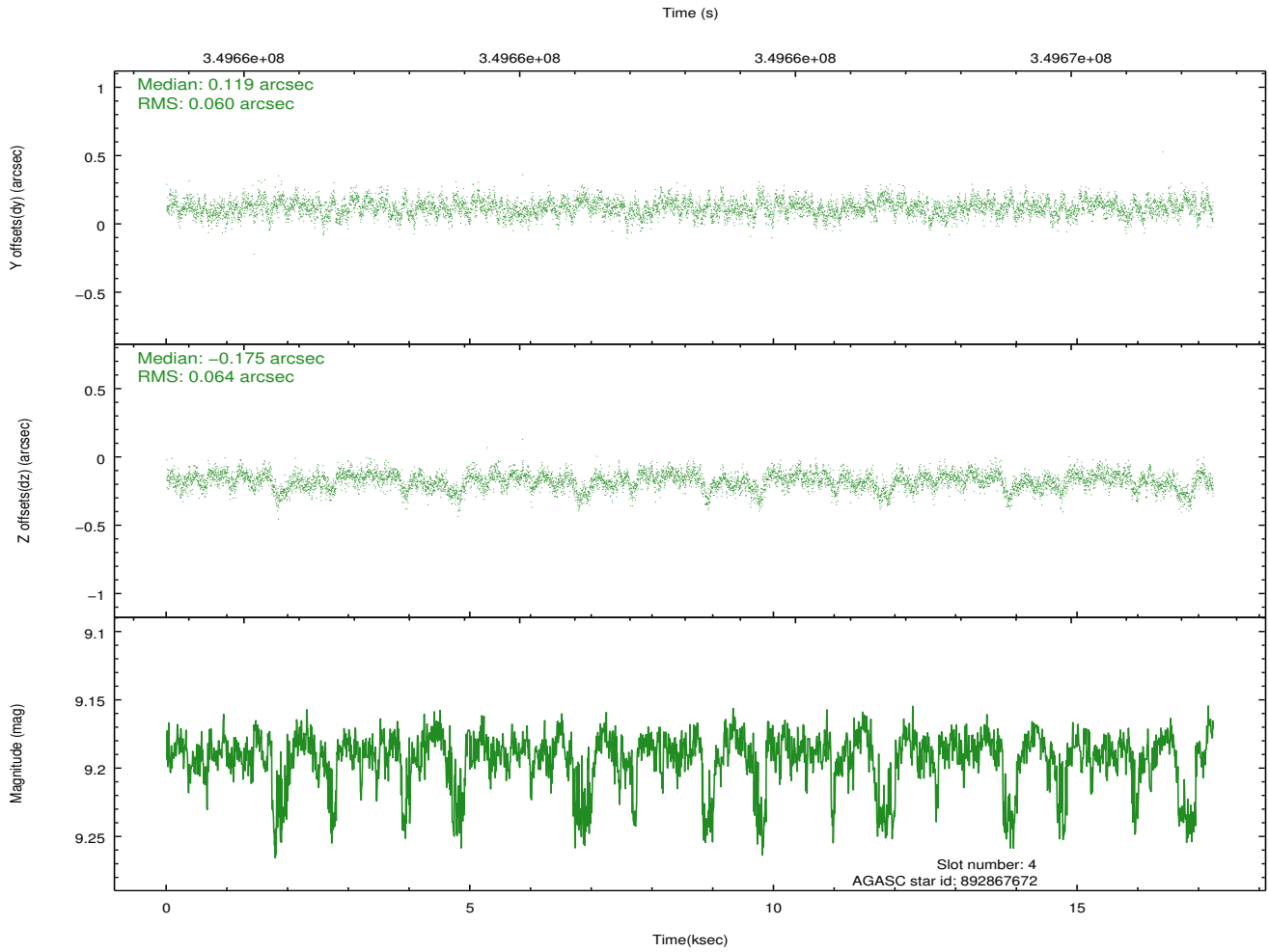
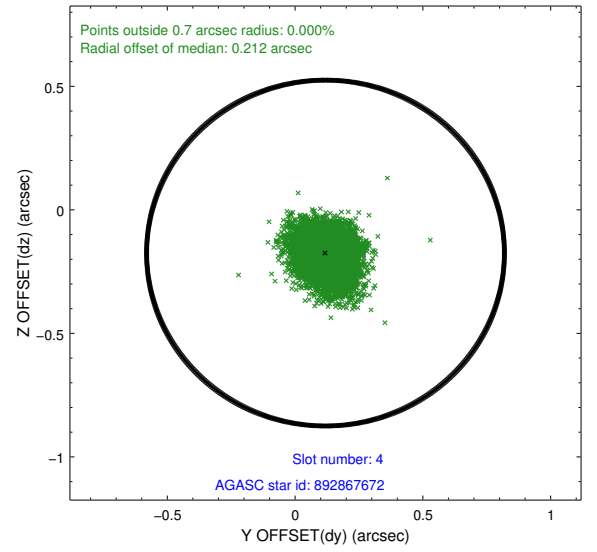
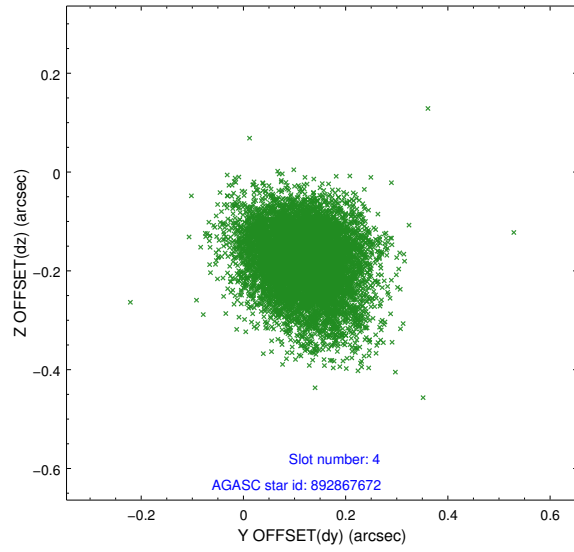
slot	status	id	mag	n_pts	med_dy	med_dz	dr1	dr2	ra	dec	mean_y	mean_z
0	FID	ACIS-S-2	6.88	4203	-0.026	-0.019	0.008	0.013	0.000000	0.000000	-766.50	-1738.14
1	FID	ACIS-S-4	6.96	4203	0.157	0.018	0.006	0.011	0.000000	0.000000	2146.86	170.11
2	FID	ACIS-S-5	6.99	4203	-0.163	0.010	0.007	0.012	0.000000	0.000000	-1819.16	164.07
3	GUIDE	892867400	6.71	8407	-0.098	0.022	0.075	0.123	259.529728	-24.073022	-1027.71	-137.40
4	GUIDE	892867672	9.19	8394	0.119	-0.175	0.092	0.154	259.050943	-24.310728	-1982.58	1377.02
5	GUIDE	894569448	9.05	8395	0.122	0.145	0.114	0.190	260.177432	-24.271287	-1610.64	-2302.89
6	GUIDE	894570824	8.91	8403	-0.259	-0.007	0.076	0.119	259.808446	-23.599412	731.12	-947.22
7	GUIDE	895093800	7.79	8405	0.115	0.017	0.056	0.089	259.726433	-24.436397	-2292.26	-862.41

## 2.4 Star Slots

### 2.4.1 Slot 3

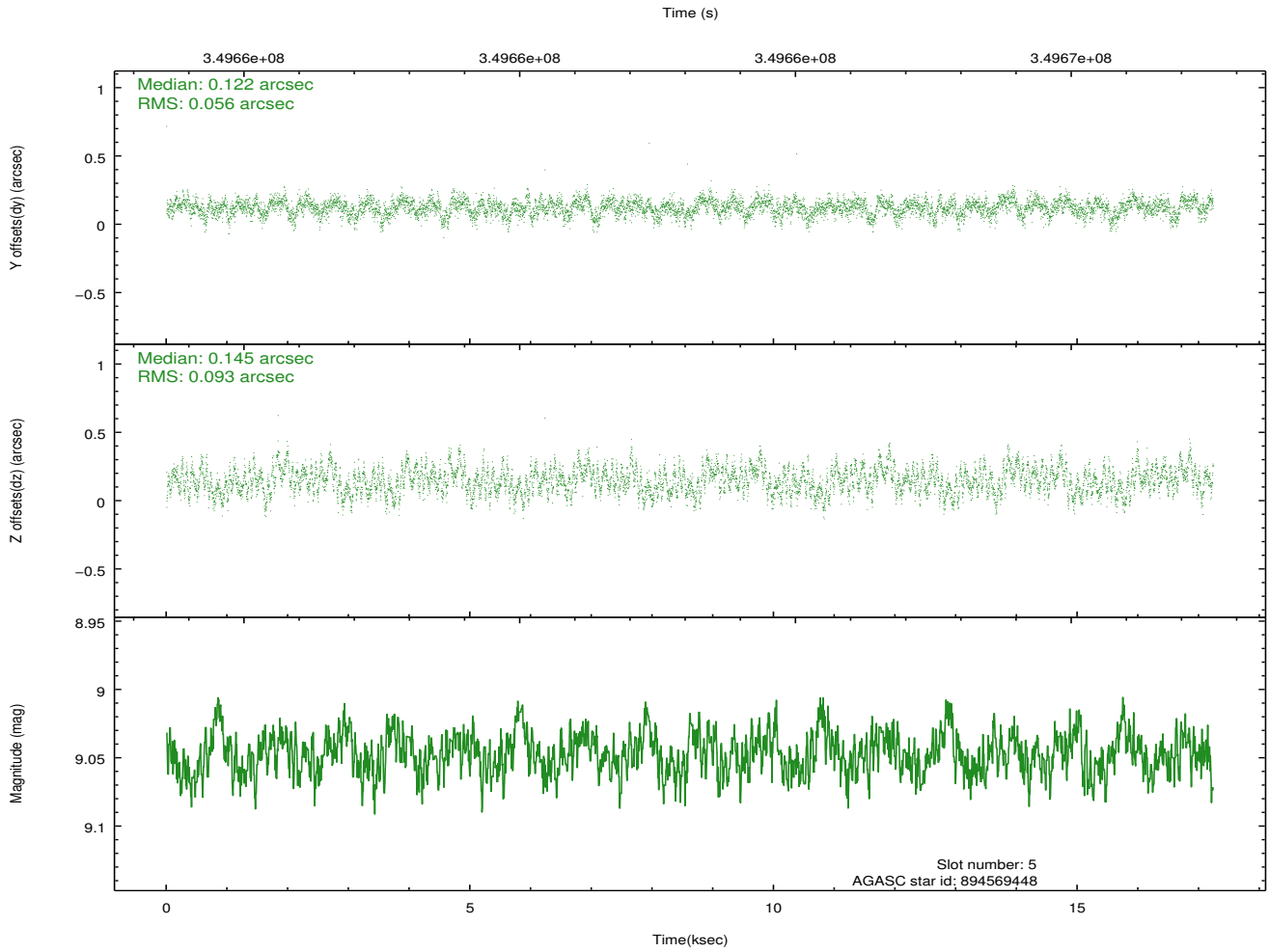
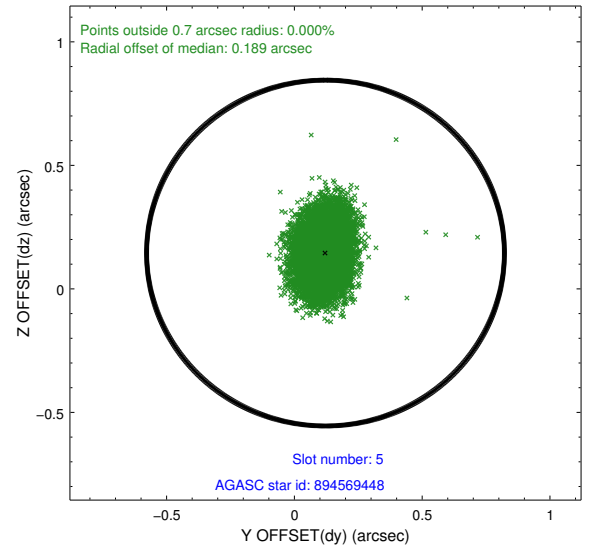
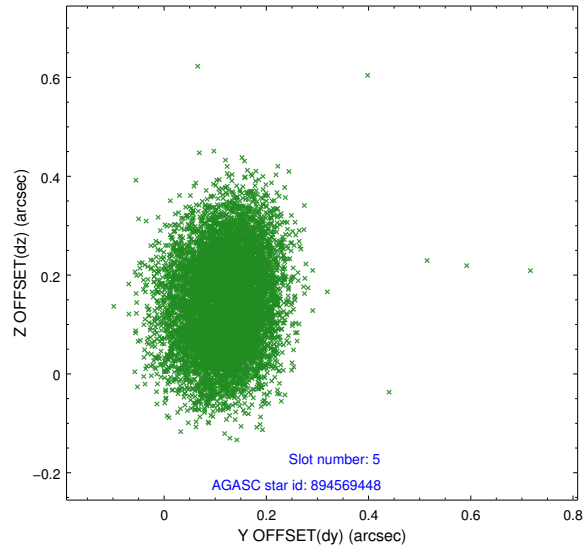


## 2.4.2 Slot 4

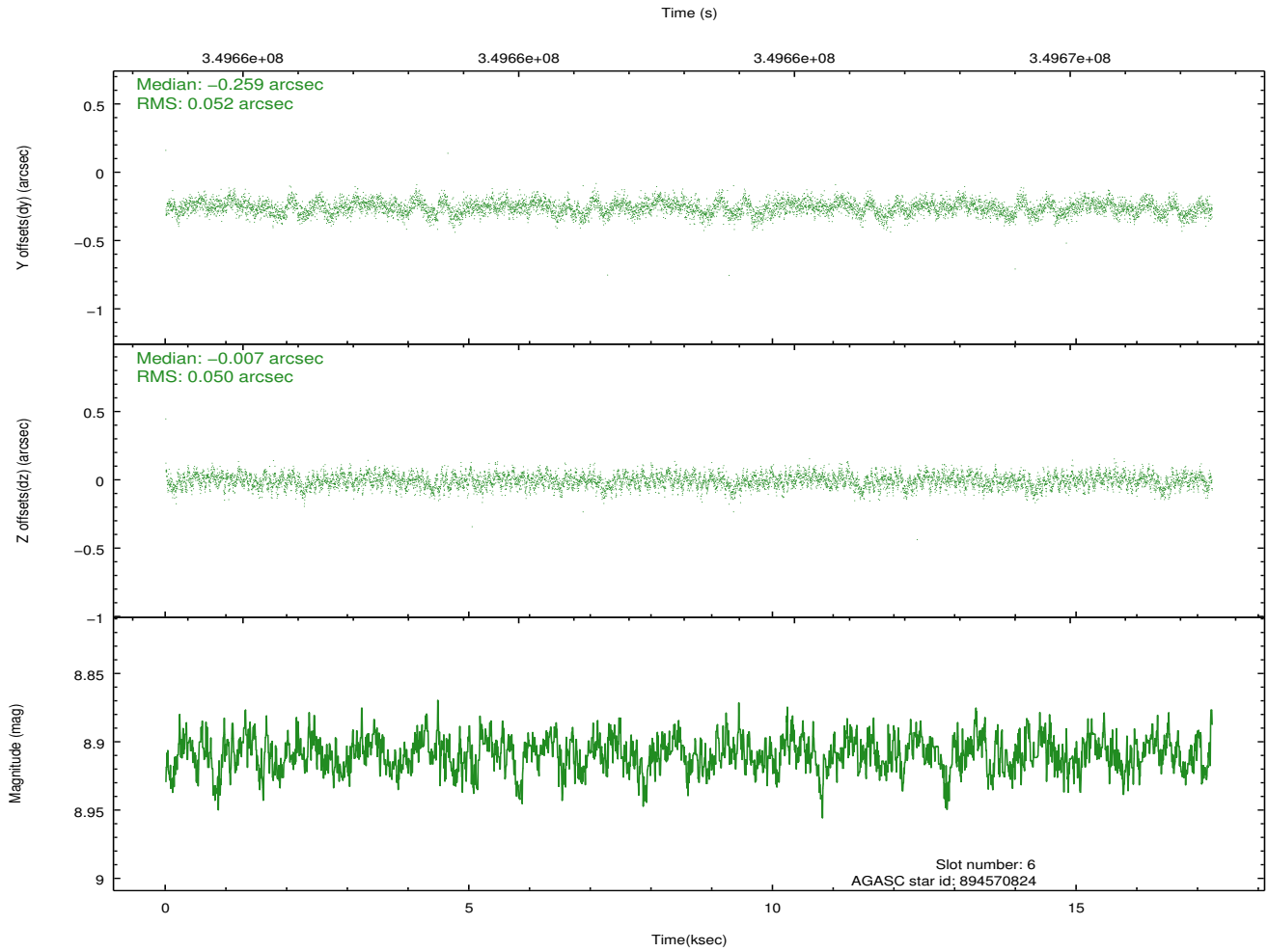
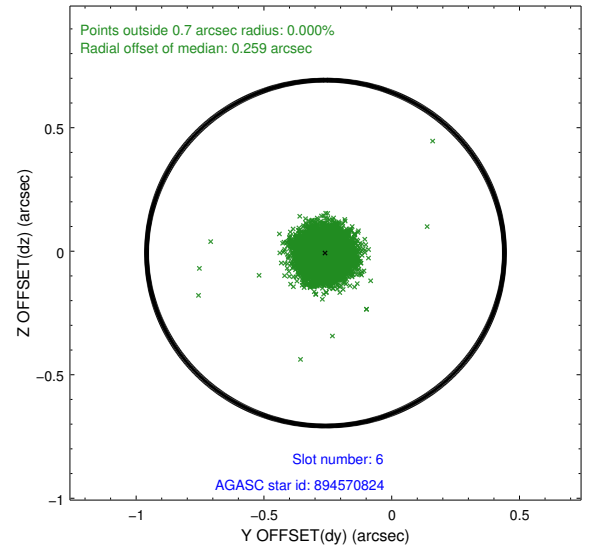
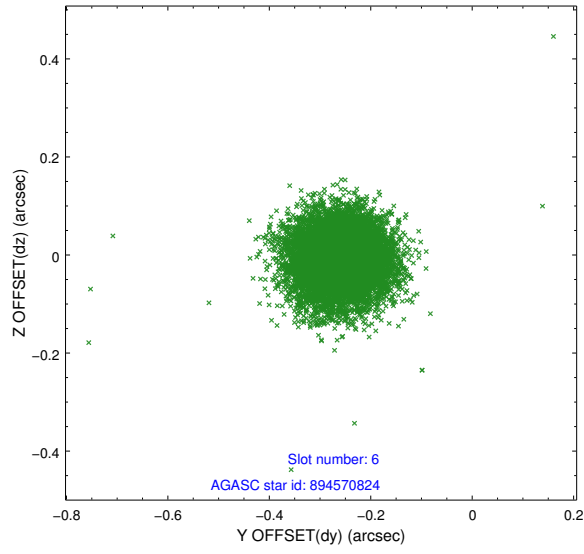




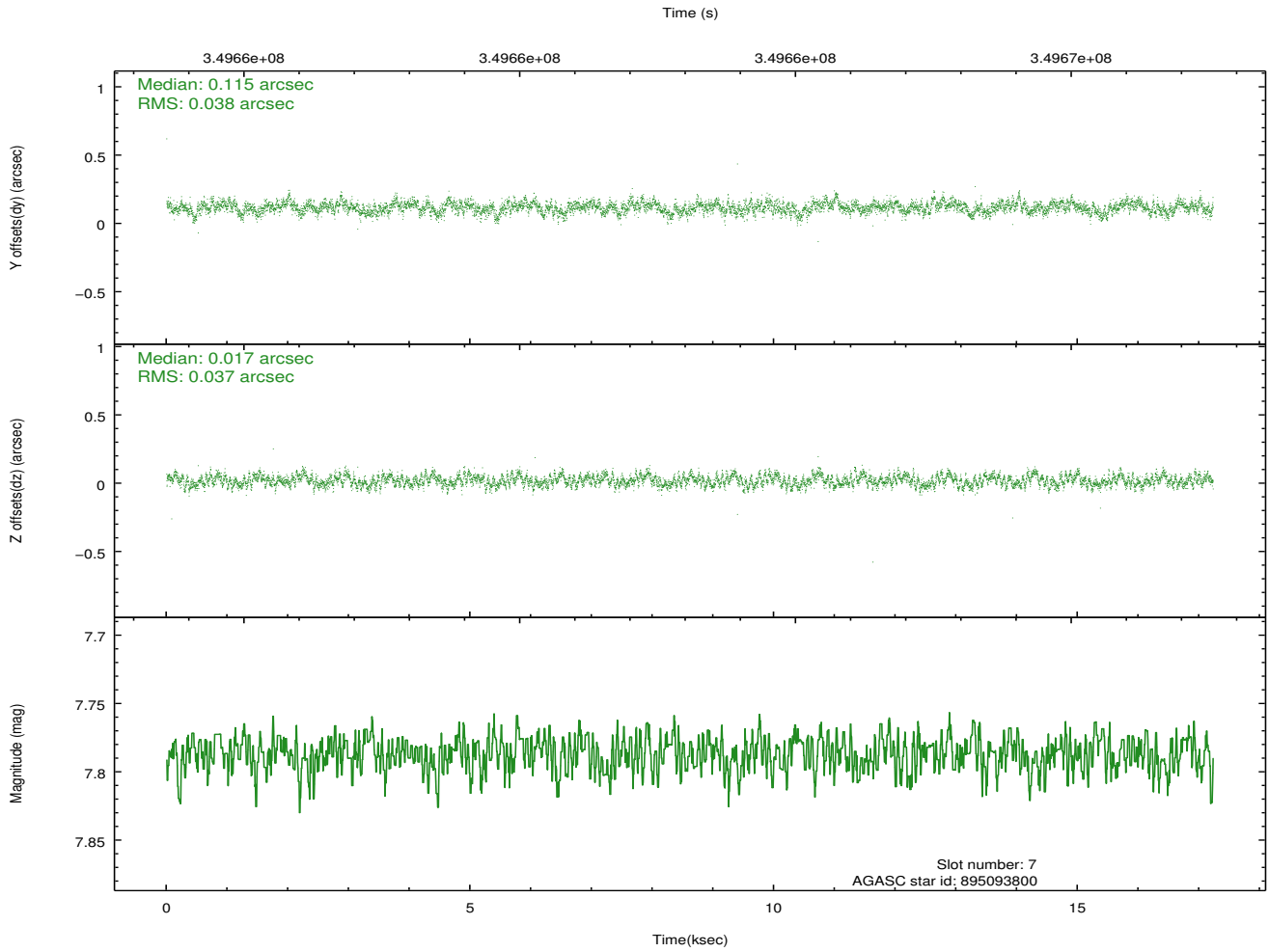
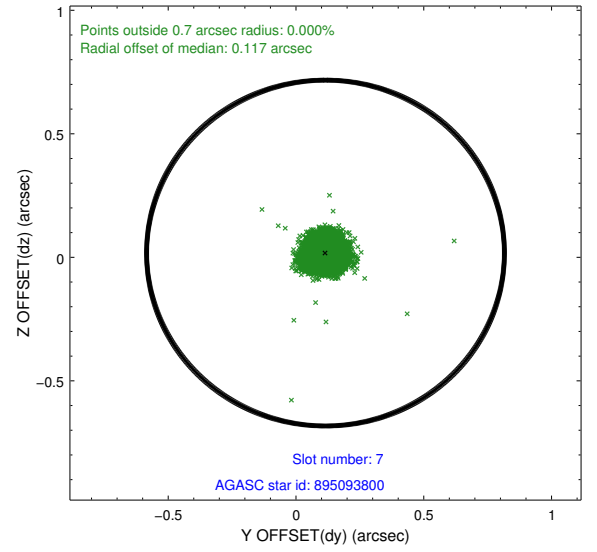
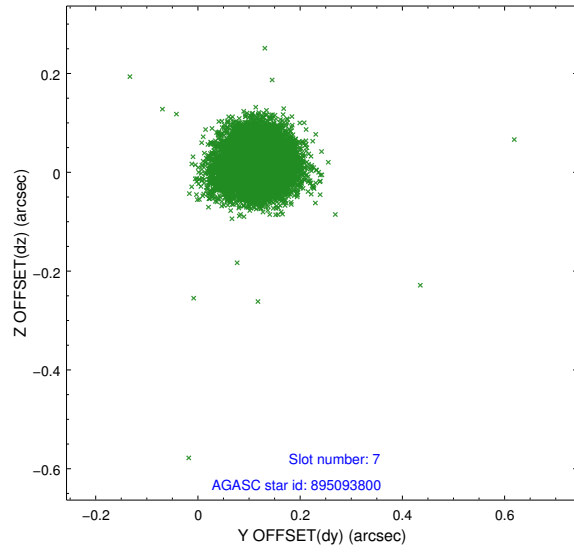
### 2.4.3 Slot 5



## 2.4.4 Slot 6

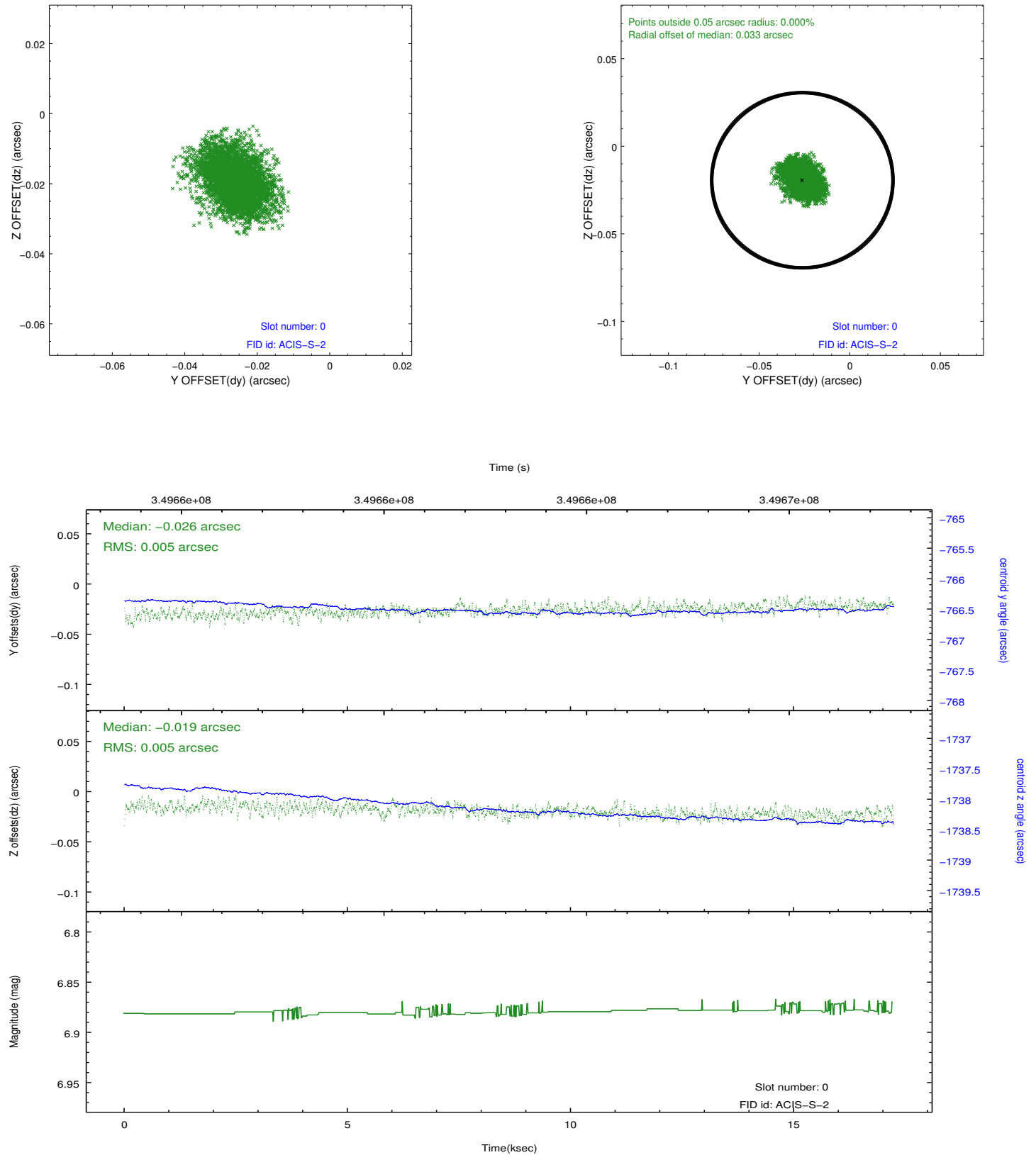


## 2.4.5 Slot 7

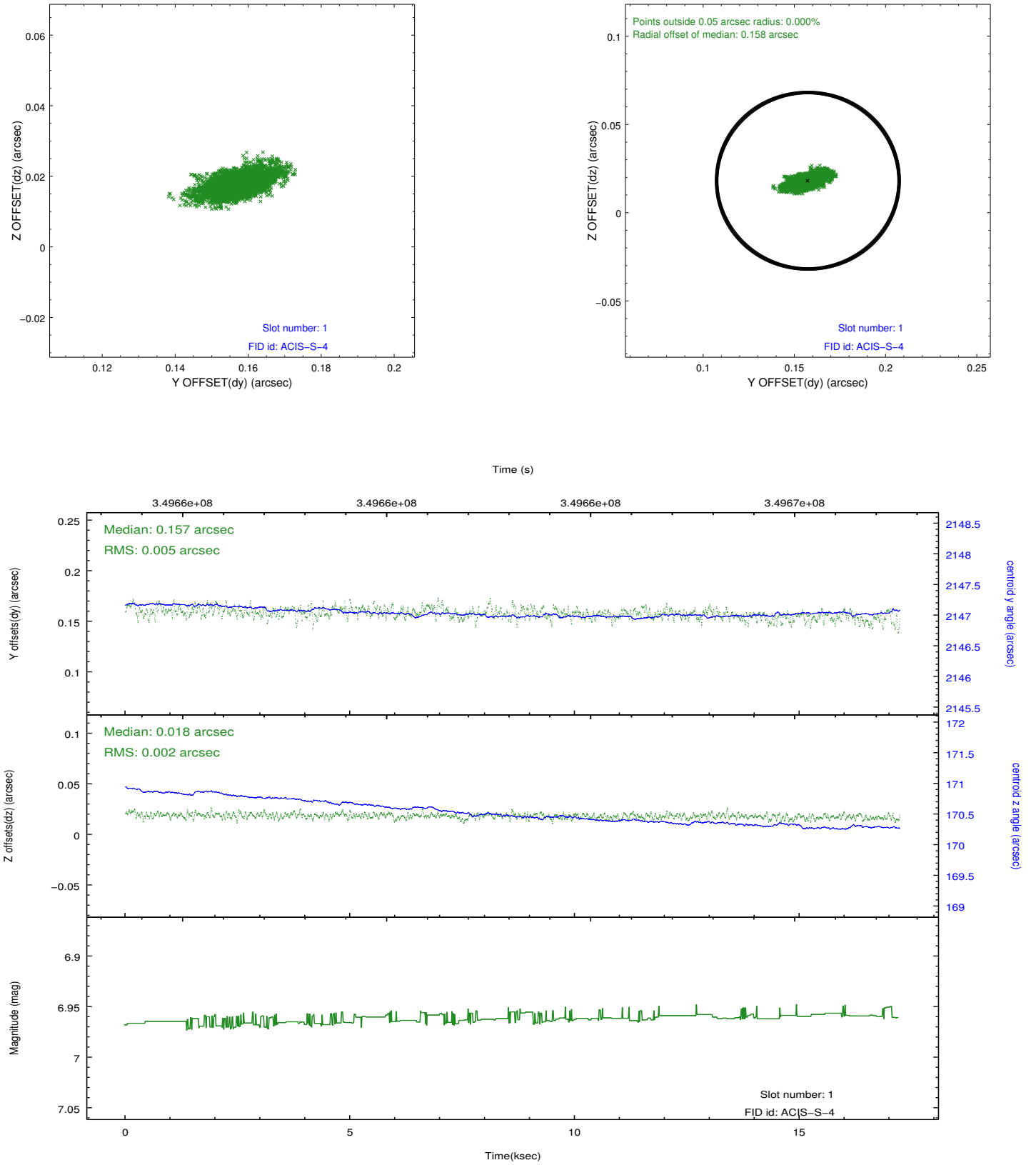


## 2.5 FID Slots

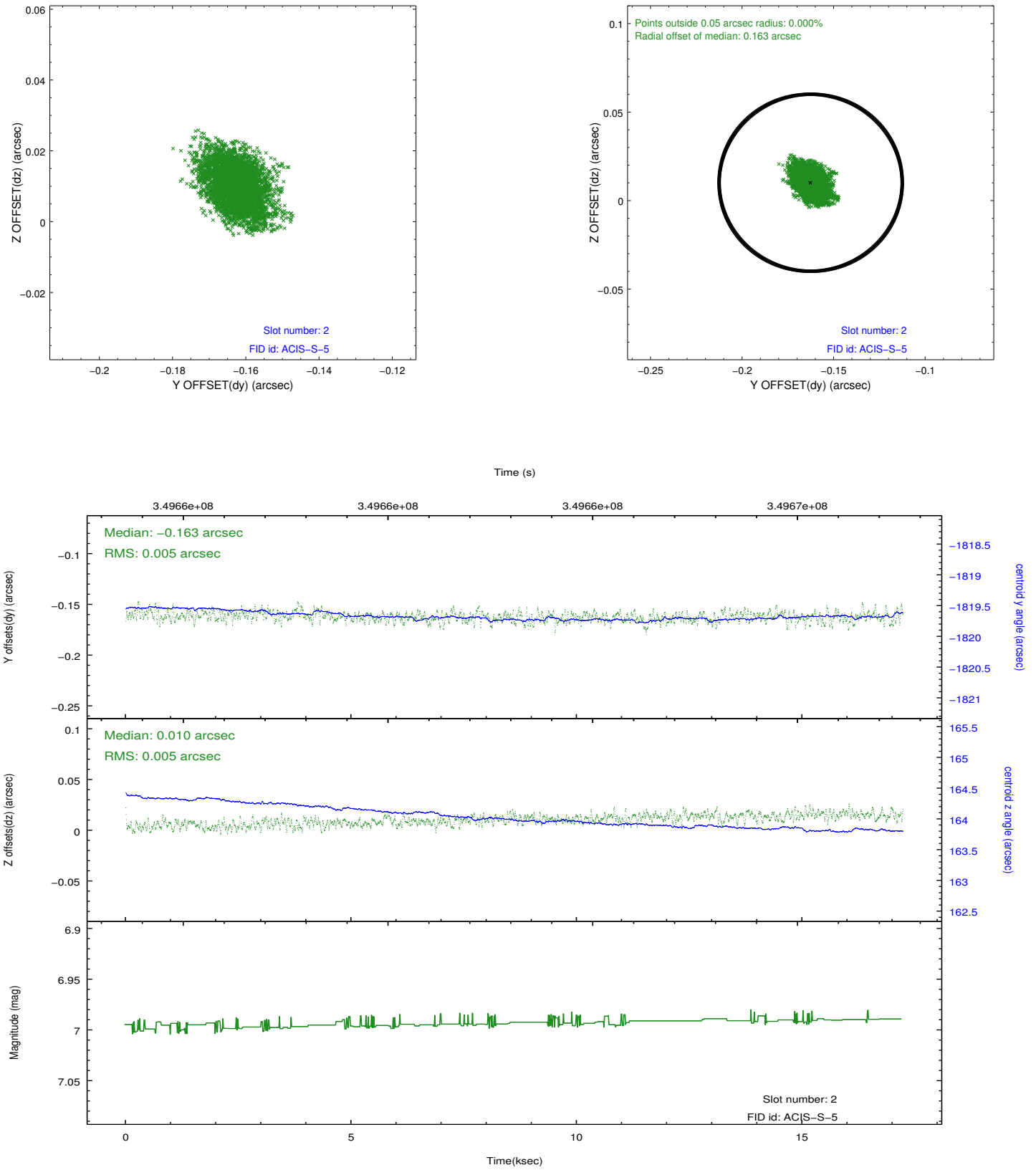
### 2.5.1 Slot 0



## 2.5.2 Slot 1



### 2.5.3 Slot 2



## A Summary

### A.1 Status

V&V Scientist	Jen Lauer
V&V Date (YYYY-MM-DD)	2012.06.04
V&V Edition	1
V&V Disposition and Status	OK
V&V Charge Time	16.9384001

### A.2 Comments

Optional chip CCD I2 not used.