

# V&V Reference Report

## L2 ASCDS Version : 8.4.4

Observation 8908 - L2 Version 3  
Chandra X-Ray Center

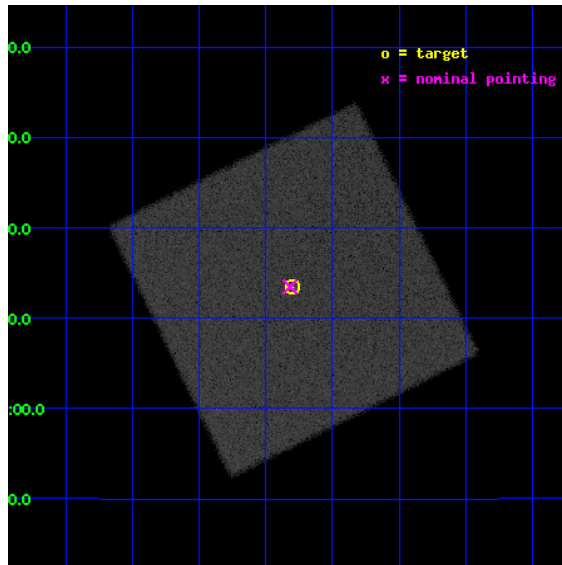
L2 Processing Date : Aug 12 2012

## Contents

<b>1</b>	<b>Front</b>	<b>2</b>
<b>2</b>	<b>OBI</b>	<b>3</b>
2.1	OBI . . . . .	3
2.1.1	Images . . . . .	3
2.1.2	Parameters . . . . .	4
2.1.3	Events . . . . .	4
2.2	Compared Parameters . . . . .	5
2.3	Aspect . . . . .	6
2.4	Star Slots . . . . .	9
2.4.1	Slot 3 . . . . .	9
2.4.2	Slot 4 . . . . .	10
2.4.3	Slot 5 . . . . .	11
2.4.4	Slot 6 . . . . .	12
2.4.5	Slot 7 . . . . .	13
2.5	FID Slots . . . . .	14
2.5.1	Slot 0 . . . . .	14
2.5.2	Slot 1 . . . . .	15
2.5.3	Slot 2 . . . . .	16
<b>A</b>	<b>Summary</b>	<b>17</b>
A.1	Status . . . . .	17
A.2	Comments . . . . .	17

# 1 Front

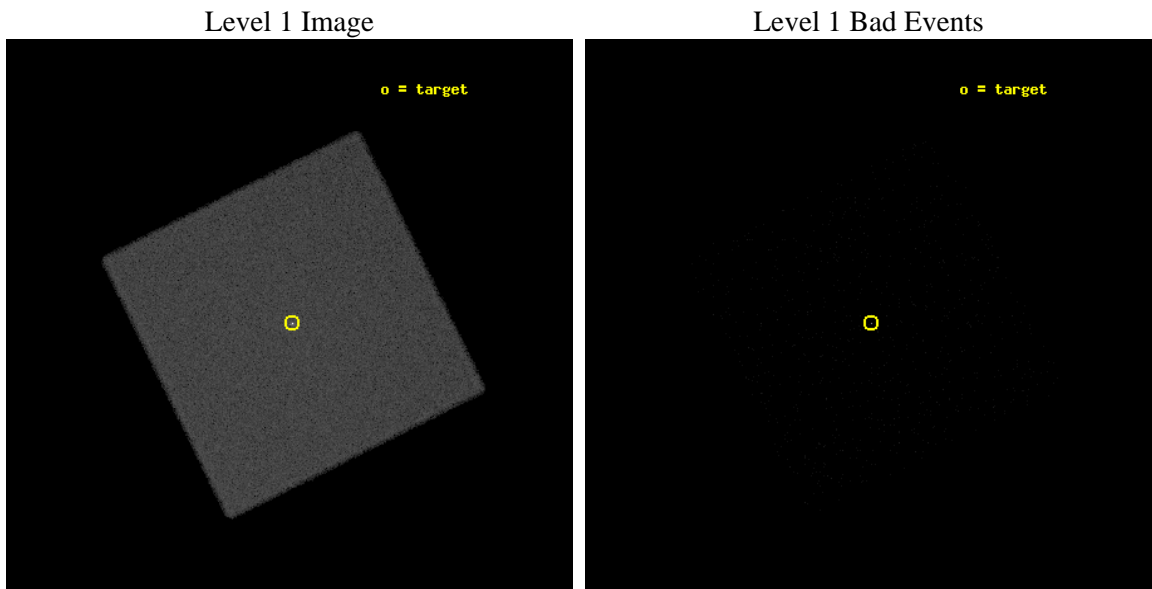
seq_num	200489	Sequence number
obs_id	8908	Observation id
title	The Further Fainting of Alpha Cen A	Proposal title
observer	Dr. Thomas Ayres	Principal investigator
object	Procyon	Source name
ra_targ	114.825417	Observer's specified target RA [deg]
dec_targ	5.225	Observer's specified target Dec [deg]
ra_nom	114.82988889773	Nominal RA [deg]
dec_nom	5.2247353453958	Nominal Dec [deg]
roll_nom	18.716626591849	Nominal Roll [deg]
revision	3	Processing version of data
ontime	5105.5252475142	[s]
livetime	4784.5815490693	Ontime multiplied by DTCOR
l2events	294721	Number of level 2 events



## 2 OBI

### 2.1 OBI

#### 2.1.1 Images



### 2.1.2 Parameters

obi_num	0	Obi number	sched_exp_time	5000.000000	[s] Scheduled observation exposure time
ascdsver	8.4.5	Processing system revision	ontime	5105.5252475142	[s]
caldbver	4.5.1.1	&#160	l1events	506164	Number of level 1 events
date	2012-08-12T08:57:29	Date and time of file creation			
revision	3	Processing version of data			

### 2.1.3 Events

#### Level 1 Events

	<b>segment 0</b>
level 1 events	506164
rejected events	73771
rejected %	14%

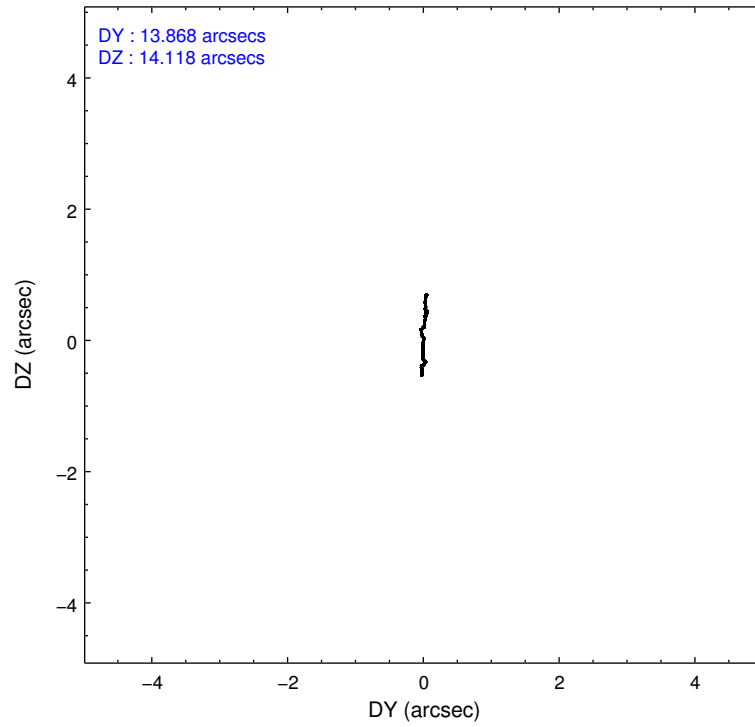
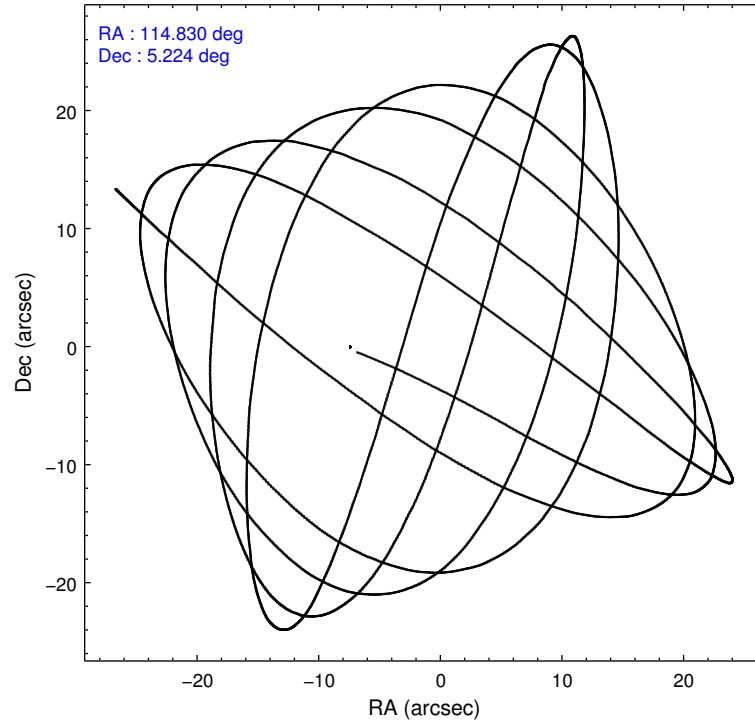


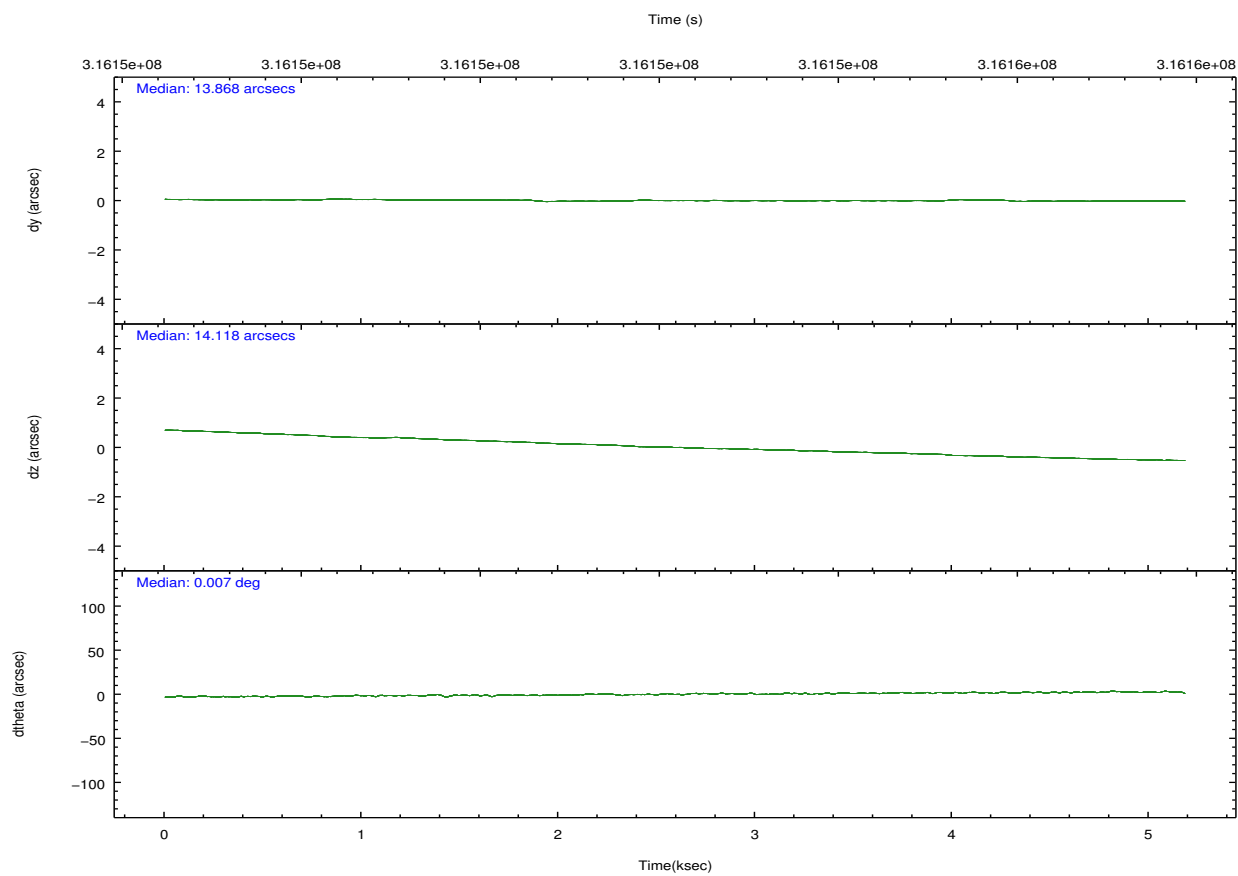
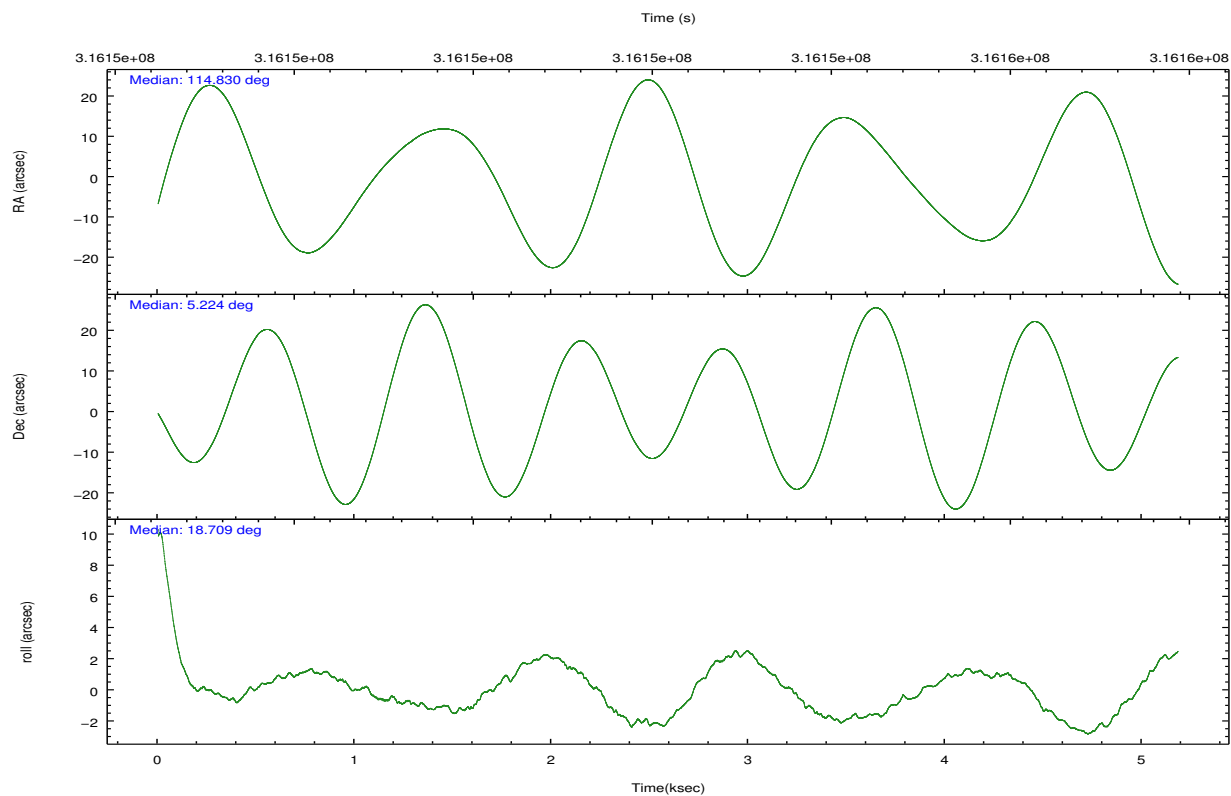
## 2.2 Compared Parameters

Parameter	Planned	Actual
Instrument	HRC	HRC
Detector	HRC-I	HRC-I
Grating	NONE	NONE
Data mode	OBSERVING	OBSERVING
Observation mode	POINTING	POINTING
[deg] Pointing RA	114.812112	114.8298888977348
[deg] Pointing Dec	5.203934	5.224735345395846
[deg] Pointing Roll	18.813726	18.71662659184923
[mm] SIM focus pos	-1.040293	-1.038866356238299
[mm] SIM defocus	0	0.001426264420575141
[mm] SIM translation stage pos	126.985494	126.9829799899862
[mm] SIM translation stage offset	0	0.002508901615314585
[s] Observation start time (MET)	316150683.184000	316149734.83276
Observation start date	2008-01-08T03:36:58	2008-01-08T03:22:14
[s] Observation end time (MET)	316155683.184000	316156543.39559
Observation end date	2008-01-08T05:00:18	2008-01-08T05:15:43

Parameter	Planned	Actual
Obspar format version number	7	7
Obspar file type	PREDICTED	ACTUAL
Obspar update status	NONE	UPDATED

## 2.3 Aspect



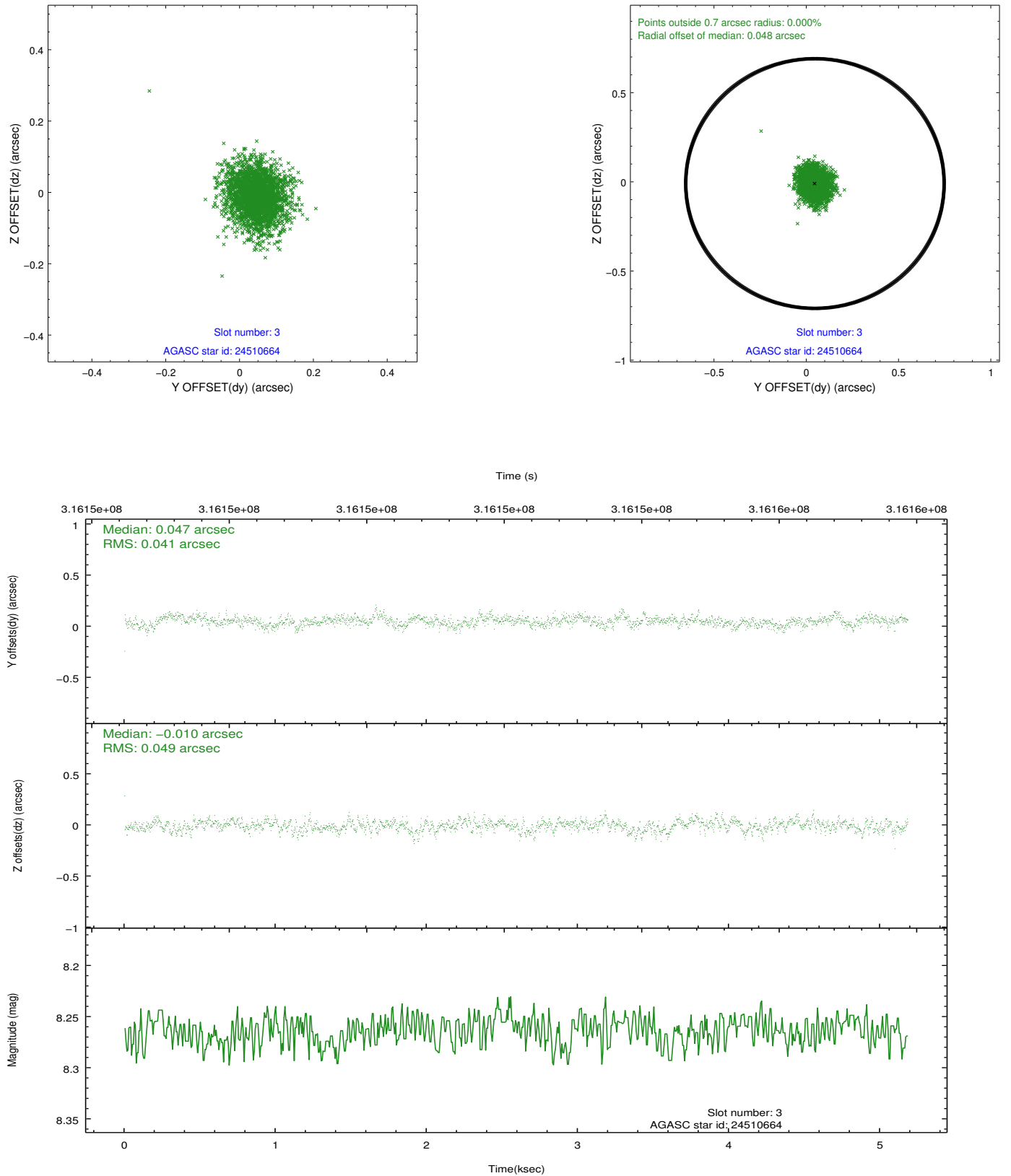


### Slot Statistics

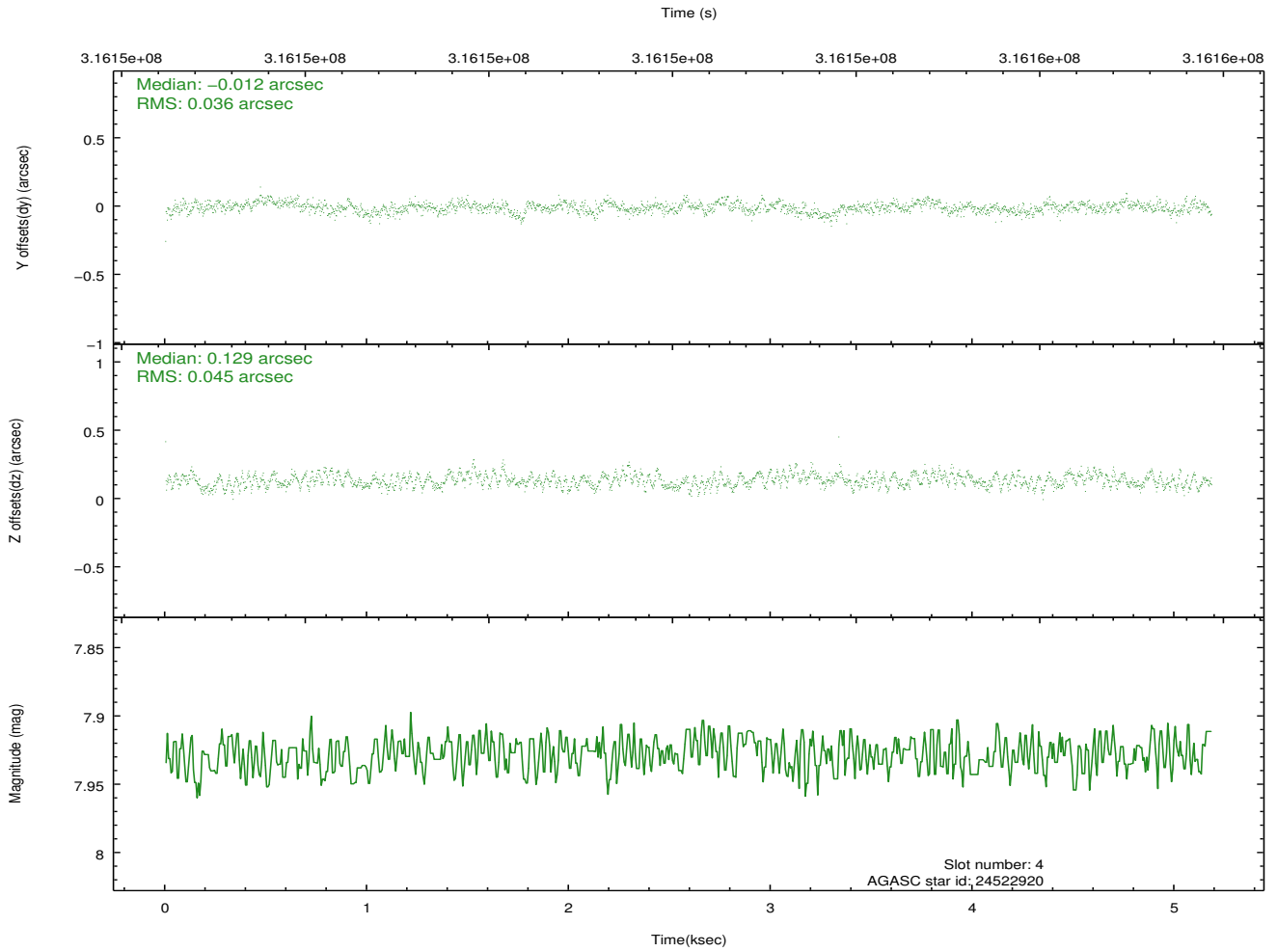
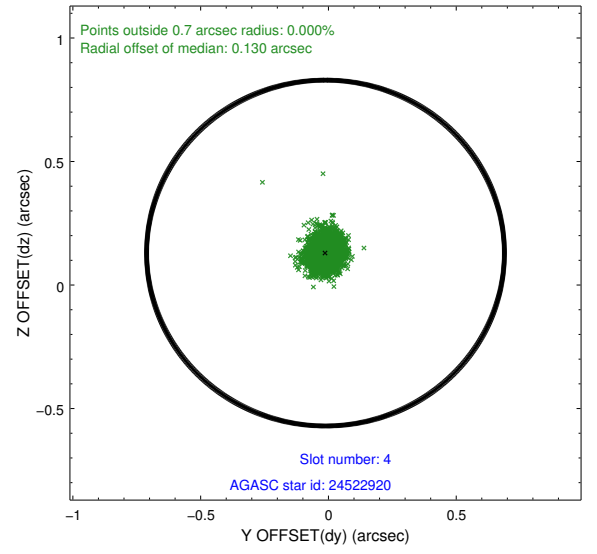
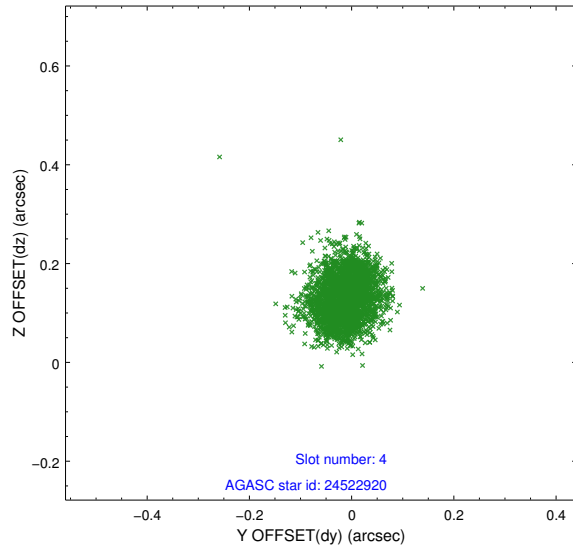
slot	status	id	mag	n_pts	med_dy	med_dz	dr1	dr2	ra	dec	mean_y	mean_z
0	FID	HRC-I-1	7.05	1263	-0.092	0.013	0.015	0.022	0.000000	0.000000	-769.70	-1302.22
1	FID	HRC-I-2	7.08	1264	0.258	-0.138	0.018	0.025	0.000000	0.000000	842.67	-1304.93
2	FID	HRC-I-3	7.14	1263	-0.047	0.036	0.014	0.023	0.000000	0.000000	-1197.53	1001.33
3	GUIDE	24510664	8.26	2529	0.047	-0.010	0.067	0.113	114.507675	5.586603	-590.67	1656.03
4	GUIDE	24522920	7.93	2529	-0.012	0.129	0.061	0.095	114.615561	5.074592	-817.96	-212.04
5	GUIDE	24522960	7.82	2528	-0.098	0.070	0.062	0.108	115.195385	5.000625	1064.48	-1134.92
6	GUIDE	24383192	7.95	2529	-0.010	-0.130	0.067	0.105	114.373279	5.211521	-1480.35	533.61
7	GUIDE	24521432	7.64	2528	0.074	-0.060	0.080	0.132	115.643922	4.823397	2382.76	-2256.18

## 2.4 Star Slots

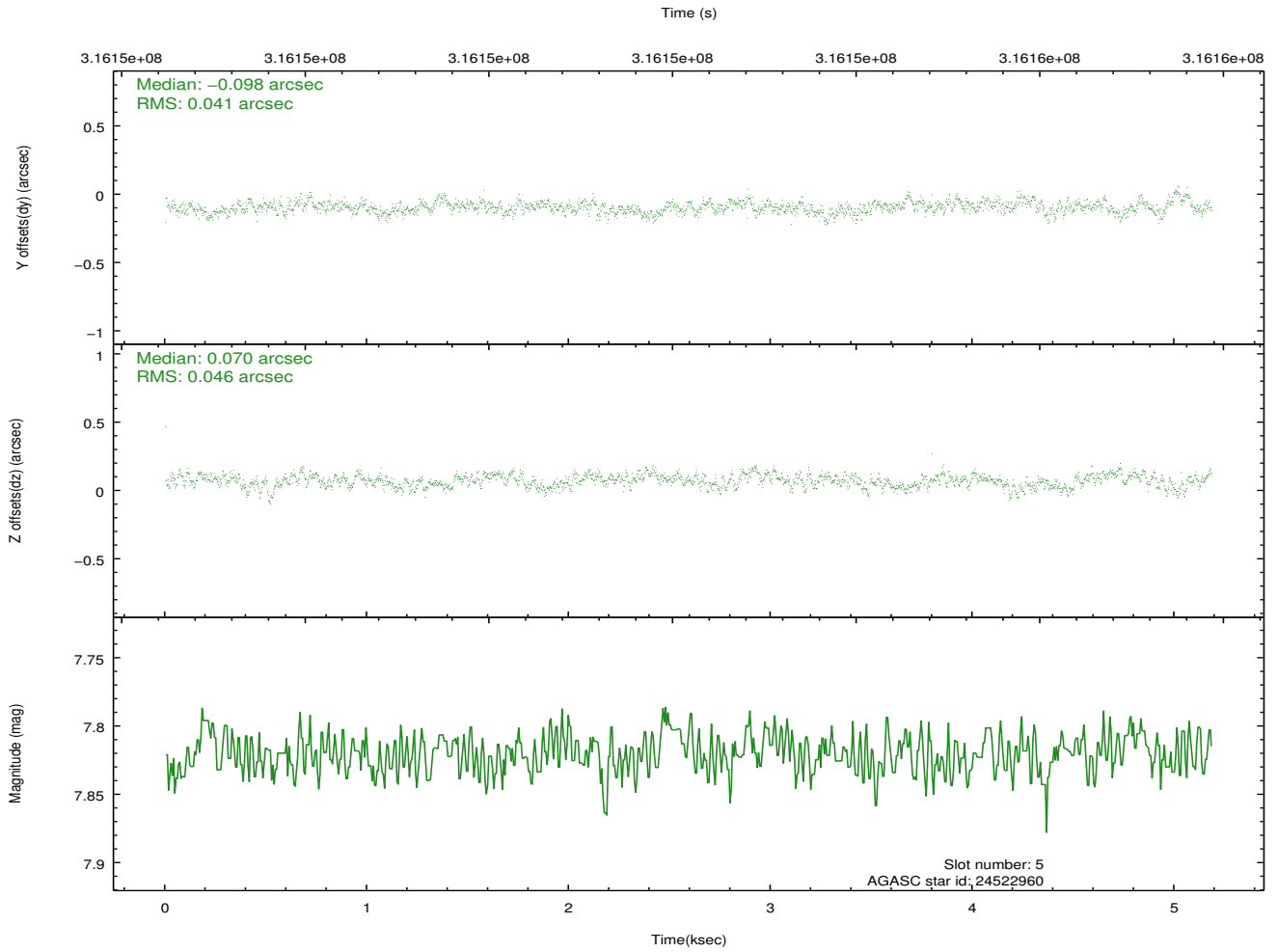
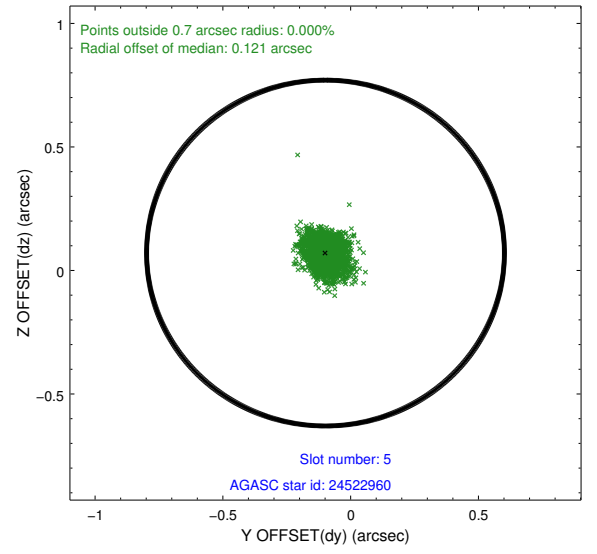
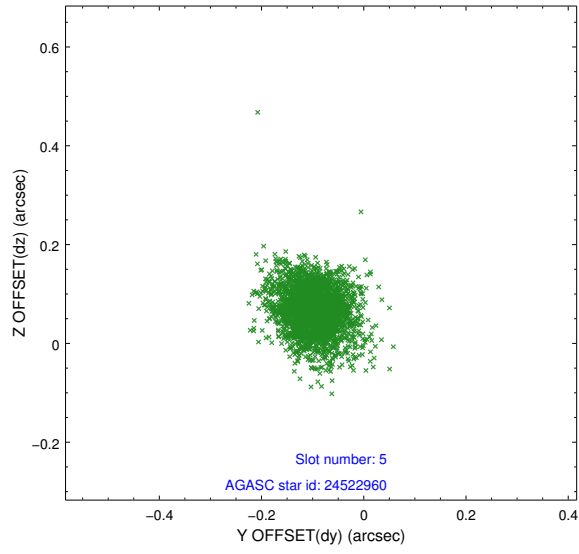
### 2.4.1 Slot 3



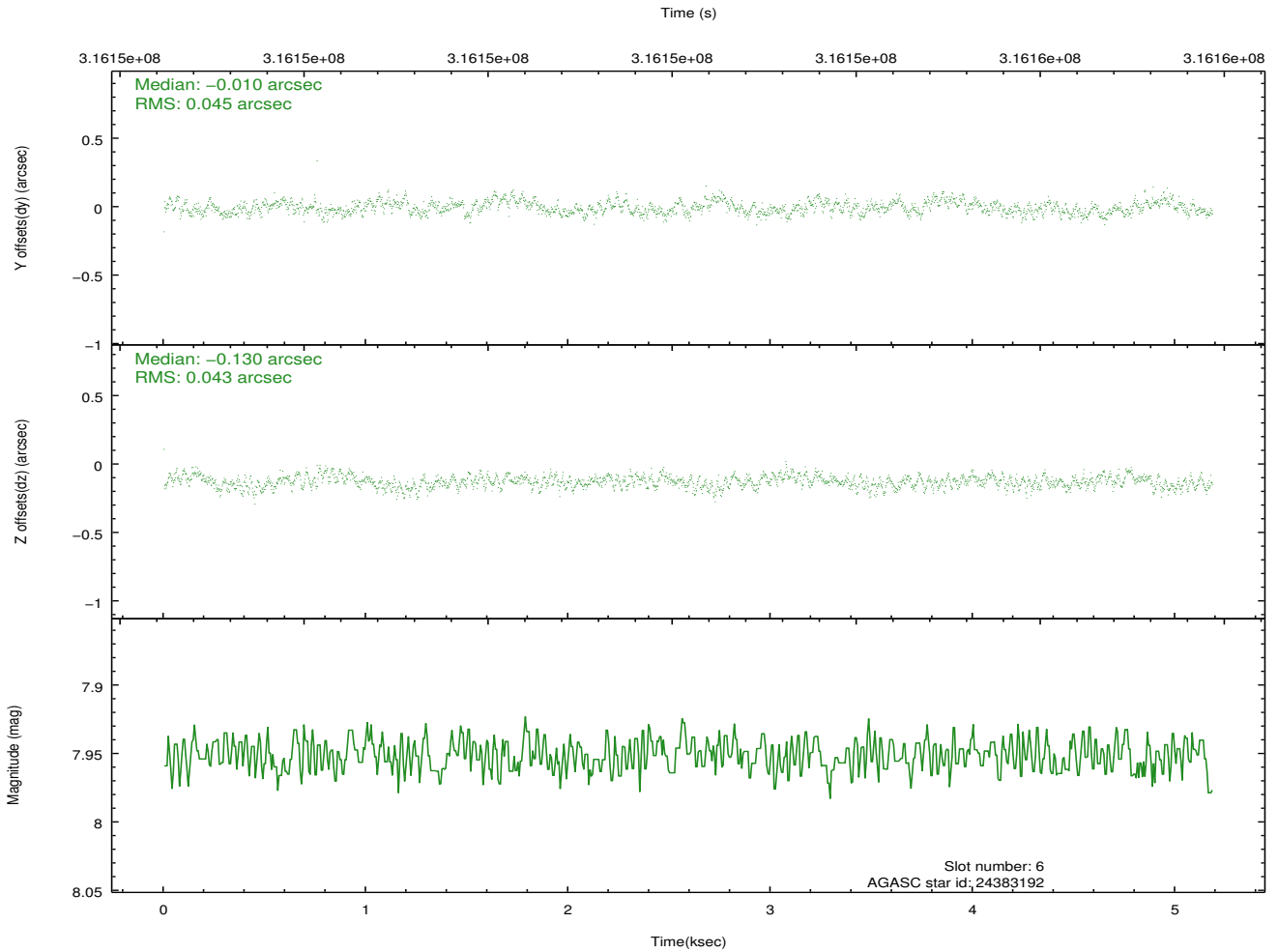
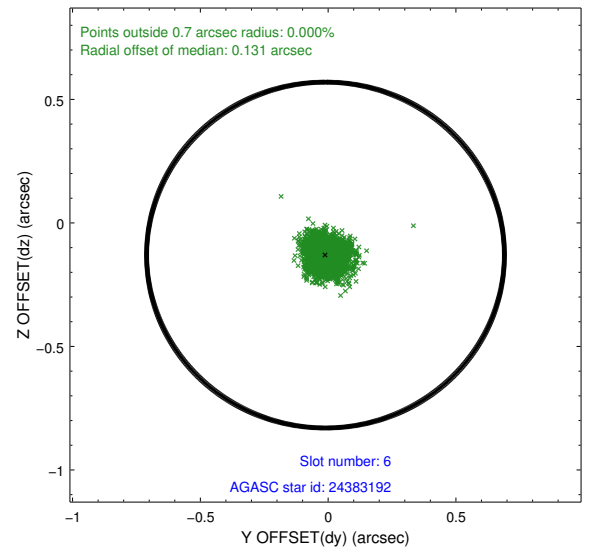
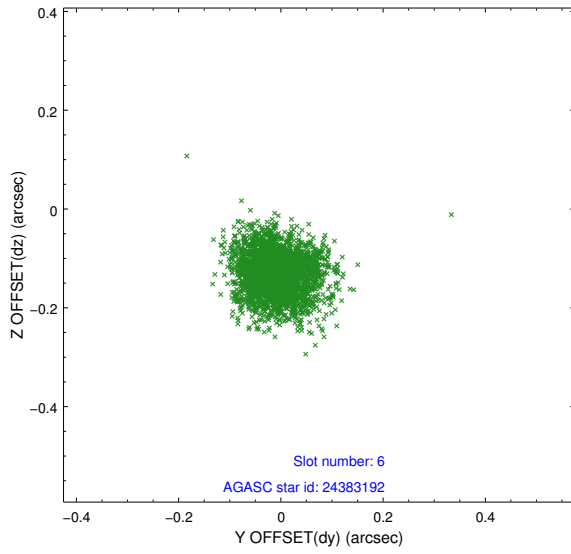
## 2.4.2 Slot 4



### 2.4.3 Slot 5

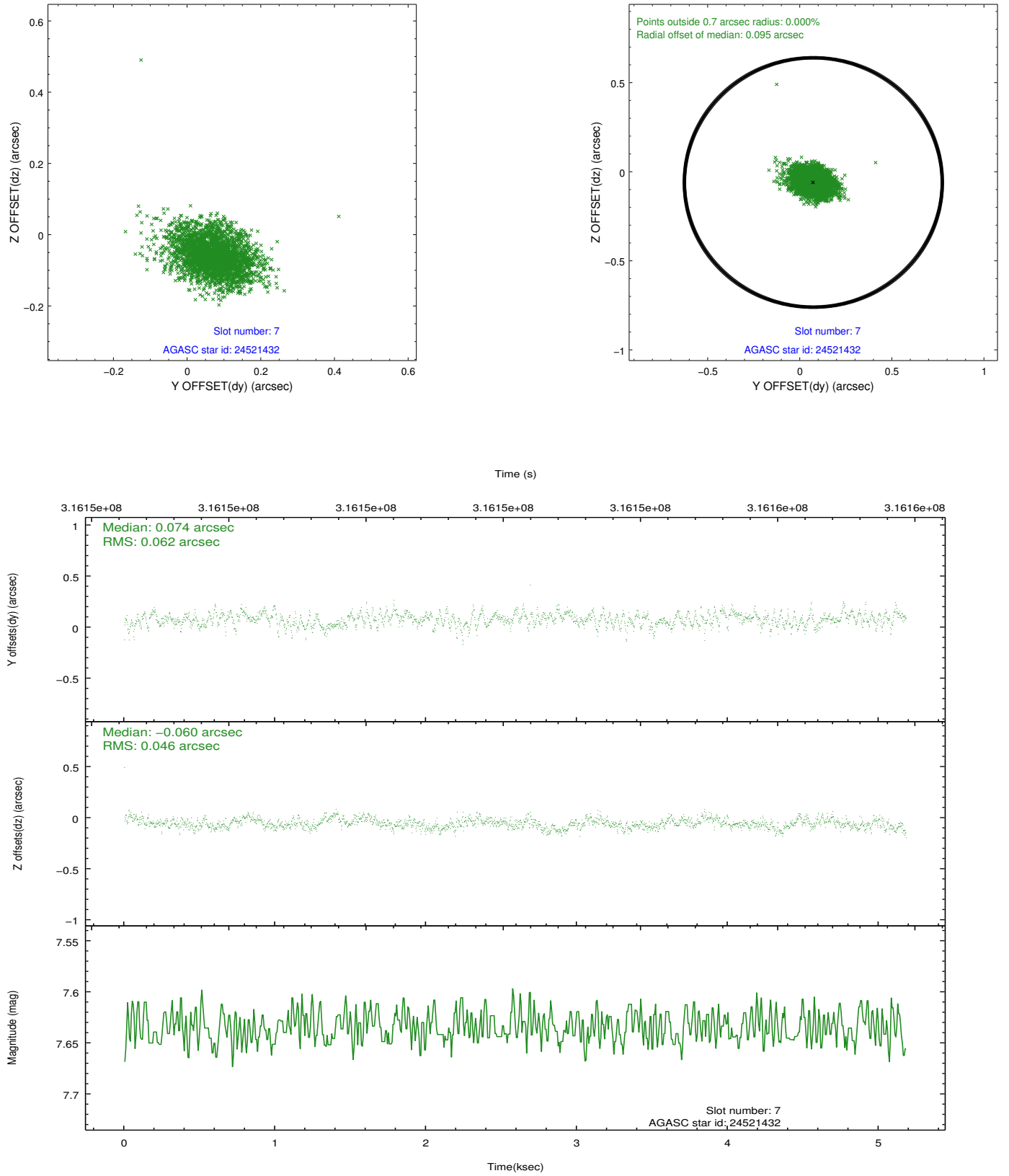


## 2.4.4 Slot 6



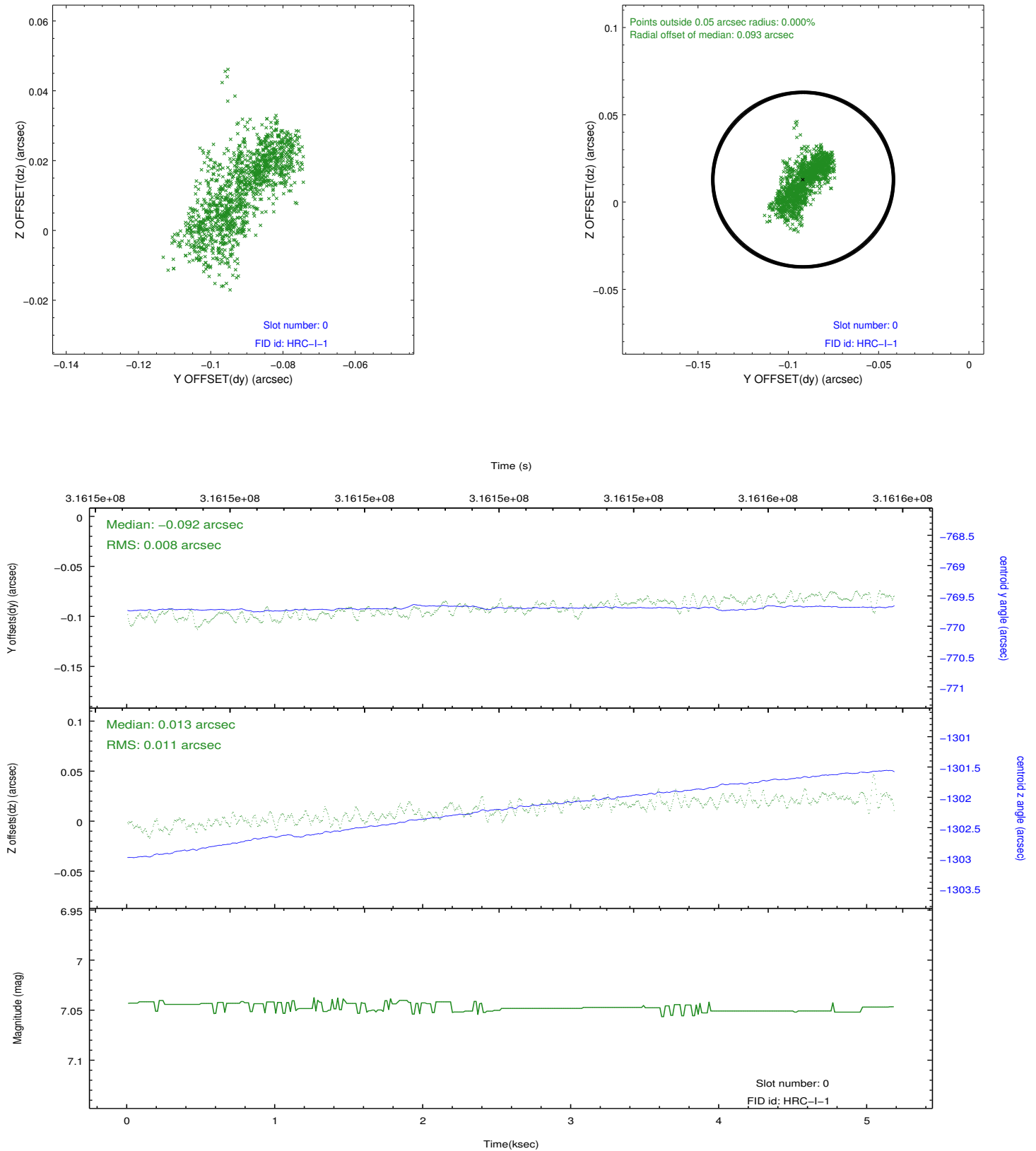


## 2.4.5 Slot 7

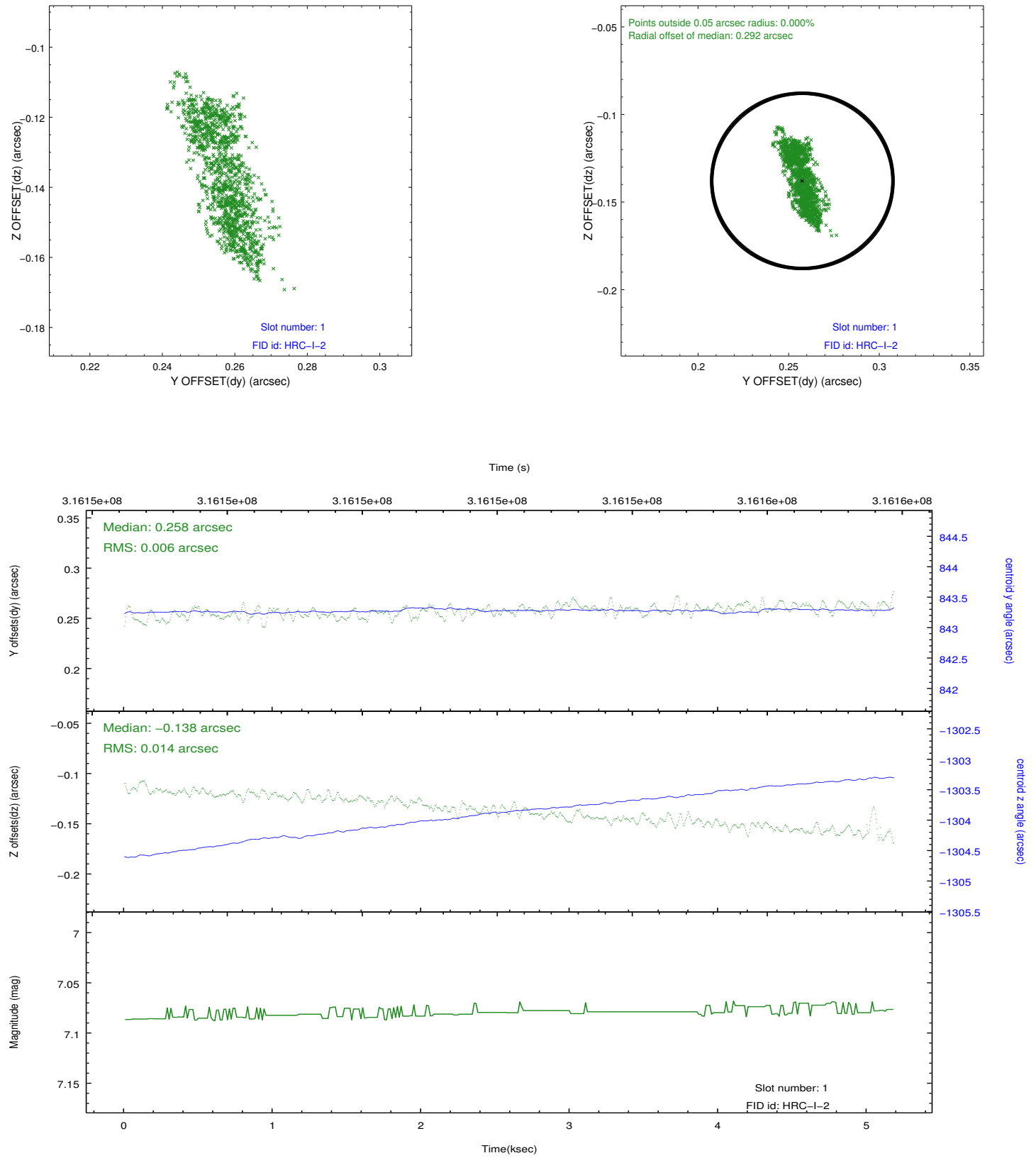


## 2.5 FID Slots

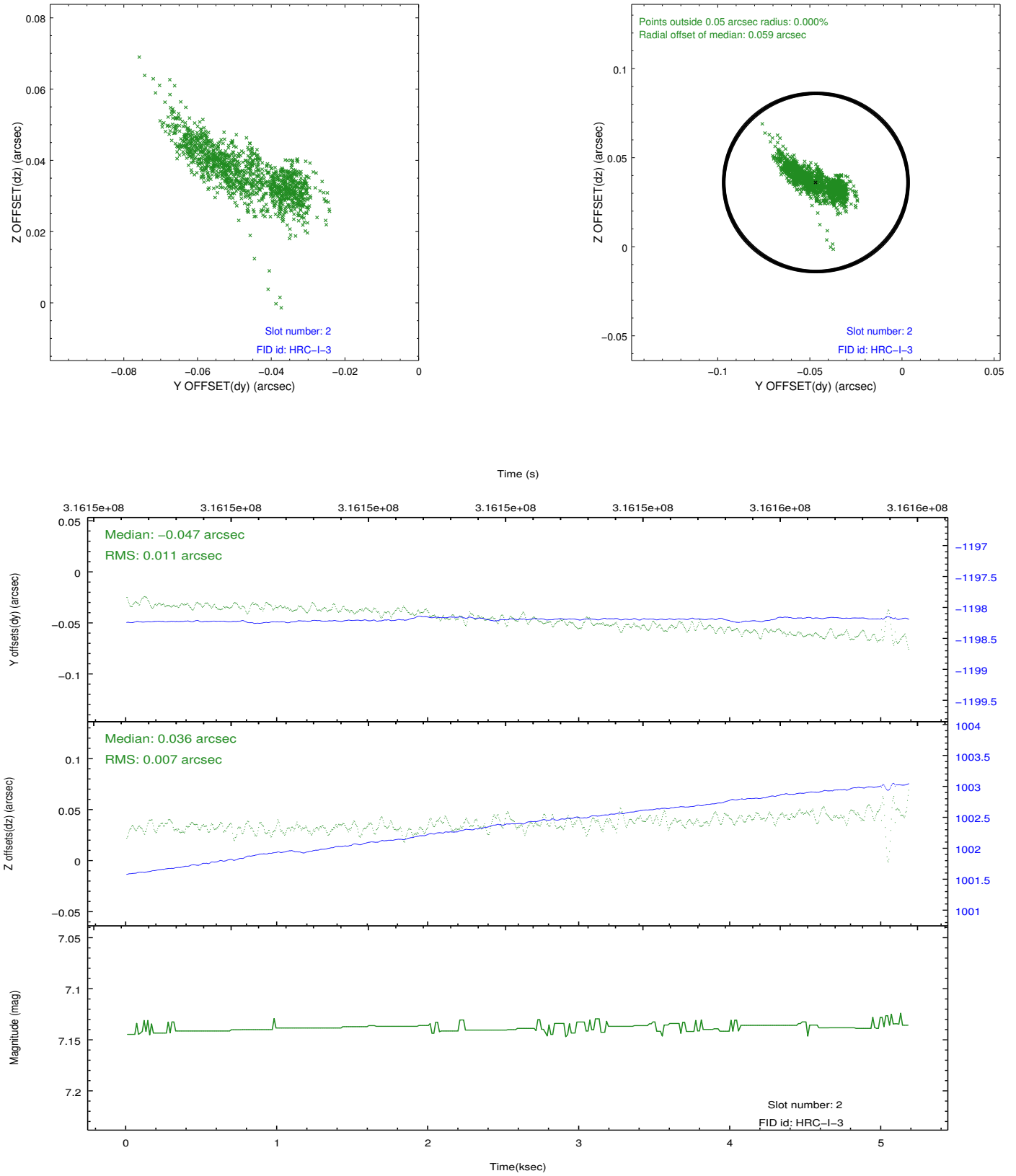
### 2.5.1 Slot 0



## 2.5.2 Slot 1



### 2.5.3 Slot 2



## A Summary

### A.1 Status

V&V Scientist	Beth Sundheim
V&V Date (YYYY-MM-DD)	2012.08.16
V&V Edition	1
V&V Disposition and Status	OK
V&V Charge Time	5.10526899

### A.2 Comments