

# V&V Reference Report

## L2 ASCDS Version : 8.4.4

Observation 8571 - L2 Version 2  
Chandra X-Ray Center

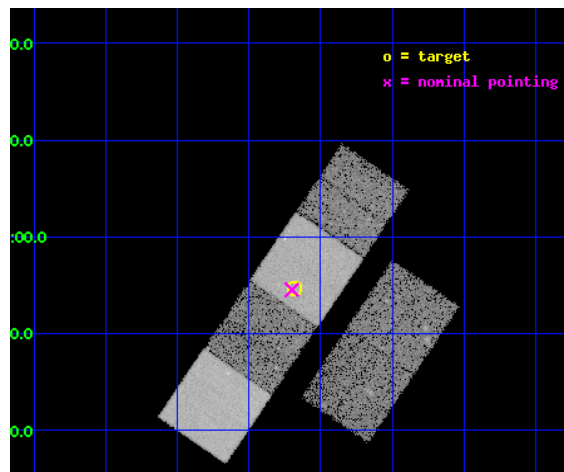
L2 Processing Date : May 8 2012

## Contents

<b>1</b>	<b>Front</b>	<b>2</b>
<b>2</b>	<b>OBI</b>	<b>3</b>
2.1	OBI . . . . .	3
2.1.1	Images . . . . .	3
2.1.2	Bias . . . . .	3
2.1.3	Parameters . . . . .	4
2.1.4	Events . . . . .	4
2.2	Compared Parameters . . . . .	5
2.3	Aspect . . . . .	6
2.4	Star Slots . . . . .	9
2.4.1	Slot 3 . . . . .	9
2.4.2	Slot 4 . . . . .	10
2.4.3	Slot 5 . . . . .	11
2.4.4	Slot 6 . . . . .	12
2.4.5	Slot 7 . . . . .	13
2.5	FID Slots . . . . .	14
2.5.1	Slot 0 . . . . .	14
2.5.2	Slot 1 . . . . .	15
2.5.3	Slot 2 . . . . .	16
<b>A</b>	<b>Summary</b>	<b>17</b>
A.1	Status . . . . .	17
A.2	Comments . . . . .	17

# 1 Front

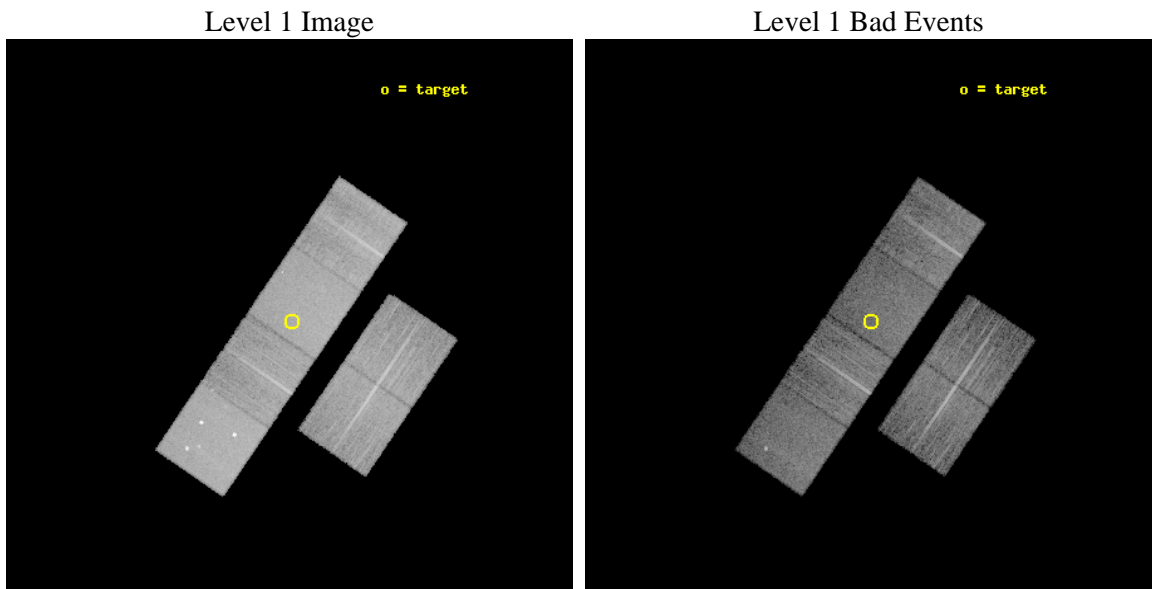
seq_num	200465	Sequence number
obs_id	8571	Observation id
title	A Hard Look at Stellar Disks at the Epoch of Planet Formation	Prop
observer	Dr. Lee Hartmann	Principal investigator
object	OB1A-776	Source name
dtcycle	0	&#160
cycle	P	events from which exps? Prim/Second/Both
ra_targ	81.170833	Observer's specified target RA [deg]
dec_targ	1.910722	Observer's specified target Dec [deg]
ra_nom	81.175283825071	Nominal RA [deg]
dec_nom	1.9087613526002	Nominal Dec [deg]
roll_nom	304.21729444344	Nominal Roll [deg]
revision	2	Processing version of data
ontime	9650.6980159879	Sum of GTIs [s]
livetime	9528.4950667567	Livetime [s]
ontime2	9650.7390559912	Sum of GTIs [s]
ontime3	9650.574895978	Sum of GTIs [s]
ontime5	9650.6569759846	Sum of GTIs [s]
ontime6	9650.6159359813	Sum of GTIs [s]
ontime7	9650.6980159879	Sum of GTIs [s]
ontime8	9650.5338559747	Sum of GTIs [s]
l2events	151403	Number of level 2 events



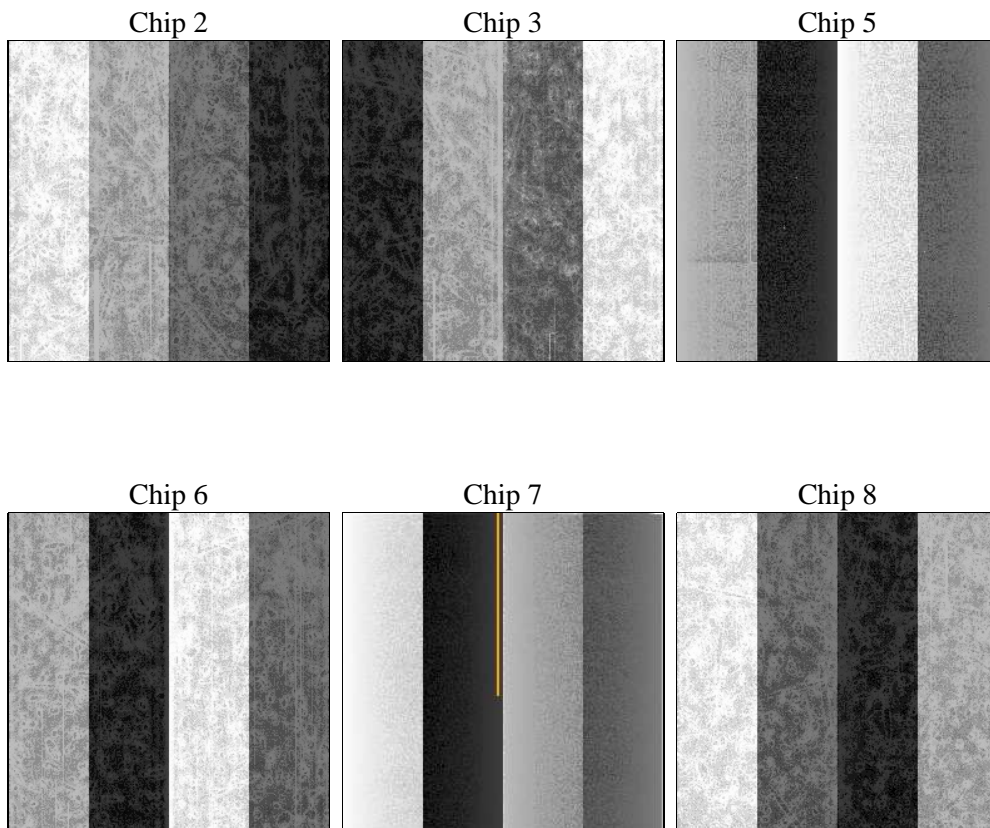
## 2 OBI

### 2.1 OBI

#### 2.1.1 Images



#### 2.1.2 Bias



### 2.1.3 Parameters

obi_num	0	Obi number	sched_exp_time	9700.000000	[s] Scheduled observation exposure time
ascdsver	8.4.4	Processing system revision	ontime	9650.6980159879	Sum of GTIs [s]
caldsver	4.4.9	&#160	ontime2	9650.7390559912	Sum of GTIs [s]
date	2012-05-08T02:03:22	Date and time of file creation	ontime3	9650.574895978	Sum of GTIs [s]
revision	2	Processing version of data	ontime5	9650.6569759846	Sum of GTIs [s]
			ontime6	9650.6159359813	Sum of GTIs [s]
			ontime7	9650.6980159879	Sum of GTIs [s]
			ontime8	9650.5338559747	Sum of GTIs [s]
			l1events	664510	Number of level 1 events

### 2.1.4 Events

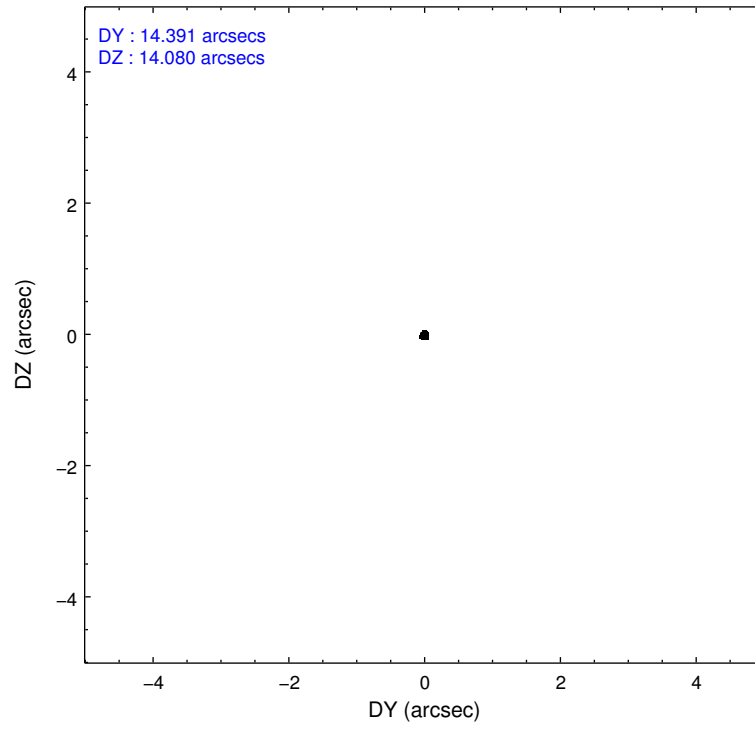
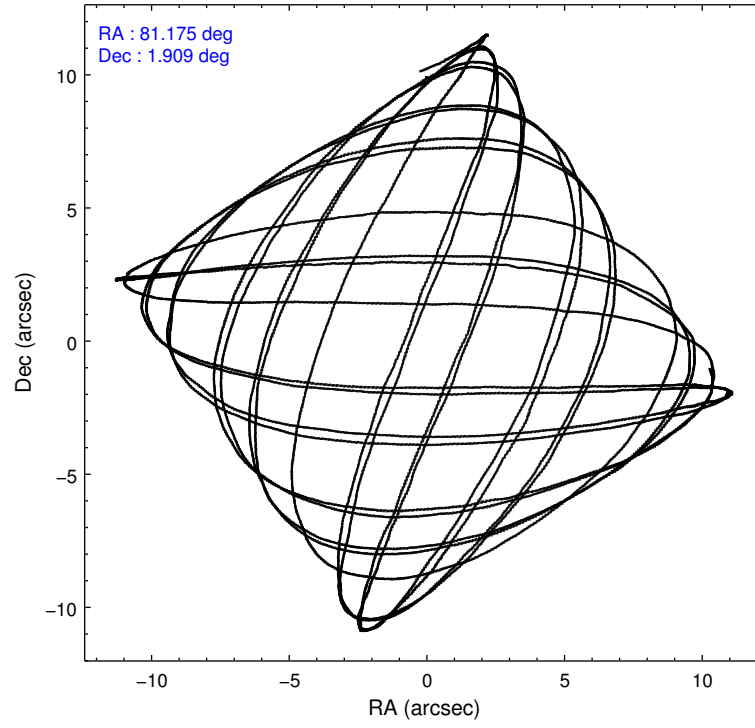
	ccd 2	ccd 3	ccd 5	ccd 6	ccd 7	ccd 8		ccd 2	ccd 3	ccd 5	ccd 6	ccd 7	ccd 8
level 1 events	95729	87963	145143	95755	125604	114316	grade 0 events	4497	4878	9438	4558	4546	7888
rejected events	85138	77048	76193	84252	73373	88927		4%	5%	6%	4%	3%	6%
rejected %	88%	87%	52%	87%	58%	77%	grade 1 events	69	55	212	45	120	90
								0%	0%	0%	0%	0%	0%
							grade 2 events	2229	2170	20560	2530	10570	6073
								2%	2%	14%	2%	8%	5%
							grade 3 events	1021	961	2322	1023	4501	2443
								1%	1%	1%	1%	3%	2%
							grade 4 events	1048	1052	2109	1031	4303	2340
								1%	1%	1%	1%	3%	2%
							grade 5 events	3606	4117	9957	4326	11540	5536
								3%	4%	6%	4%	9%	4%
							grade 6 events	1799	1859	34546	2365	28333	6649
								1%	2%	23%	2%	22%	5%
							grade 7 events	81460	72871	65999	79877	61691	83297
								85%	82%	45%	83%	49%	72%

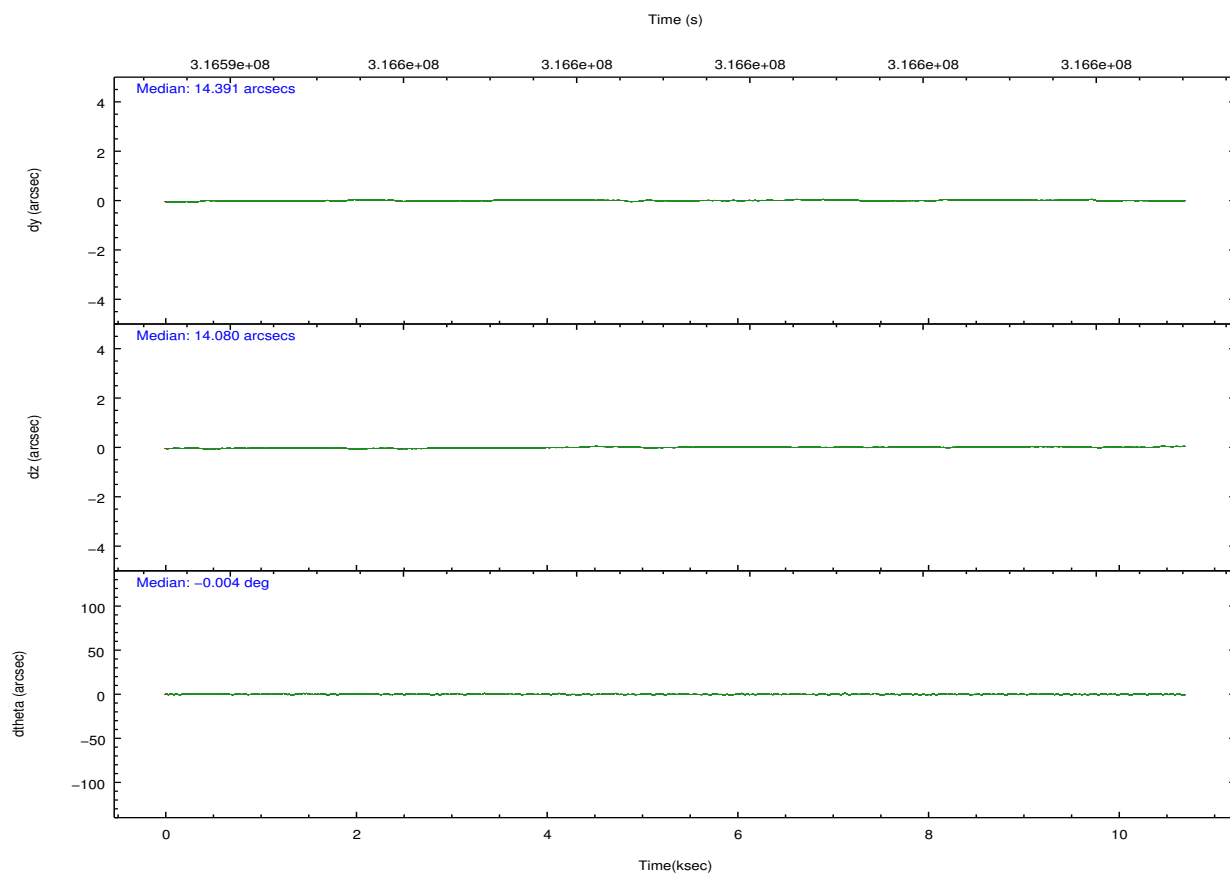
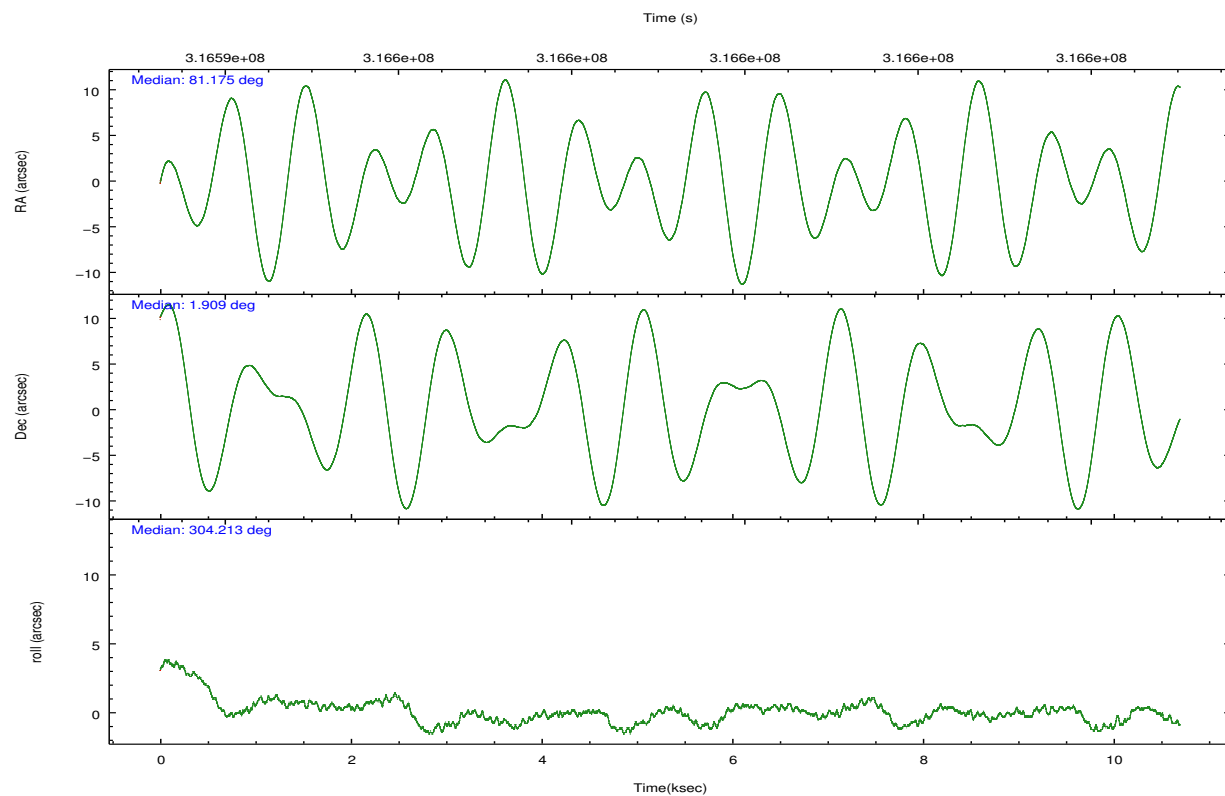


## 2.2 Compared Parameters

Parameter	Planned	Actual	Parameter	Planned	Actual
Instrument	ACIS	ACIS	Obspar format version number	7	7
Detector	ACIS-235678	ACIS-235678	Obspar file type	PREDICTED	ACTUAL
Grating	NONE	NONE	Obspar update status	NONE	UPDATED
Data mode	FAINT	FAINT	Number of optional ACIS chips dropped	0	0
Observation mode	POINTING	POINTING	On-chip summing requested	N	N
[deg] Pointing RA	81.150467	81.17528382507133	Subarray requested	NONE	NONE
[deg] Pointing Dec	1.920300	1.908761352600182	Alternating exposures requested	N	N
[deg] Pointing Roll	304.061495	304.2172944434438	[s] Primary exposure time	0.000000	3.2
[mm] SIM focus pos	-0.684267	-0.6828225247311905			
[mm] SIM defocus	0	0.001444936568705701			
[mm] SIM translation stage pos	-190.132523	-190.1425803651734			
[mm] SIM translation stage offset	0	0.01005778216563158			
[s] Observation start time (MET)	316594782.184000	316593415.84175			
Observation start date	2008-01-13T06:58:37	2008-01-13T06:36:55			
[s] Observation end time (MET)	316604482.184000	316604615.5048			
Observation end date	2008-01-13T09:40:17	2008-01-13T09:43:35			
Read mode	TIMED	TIMED			

## 2.3 Aspect



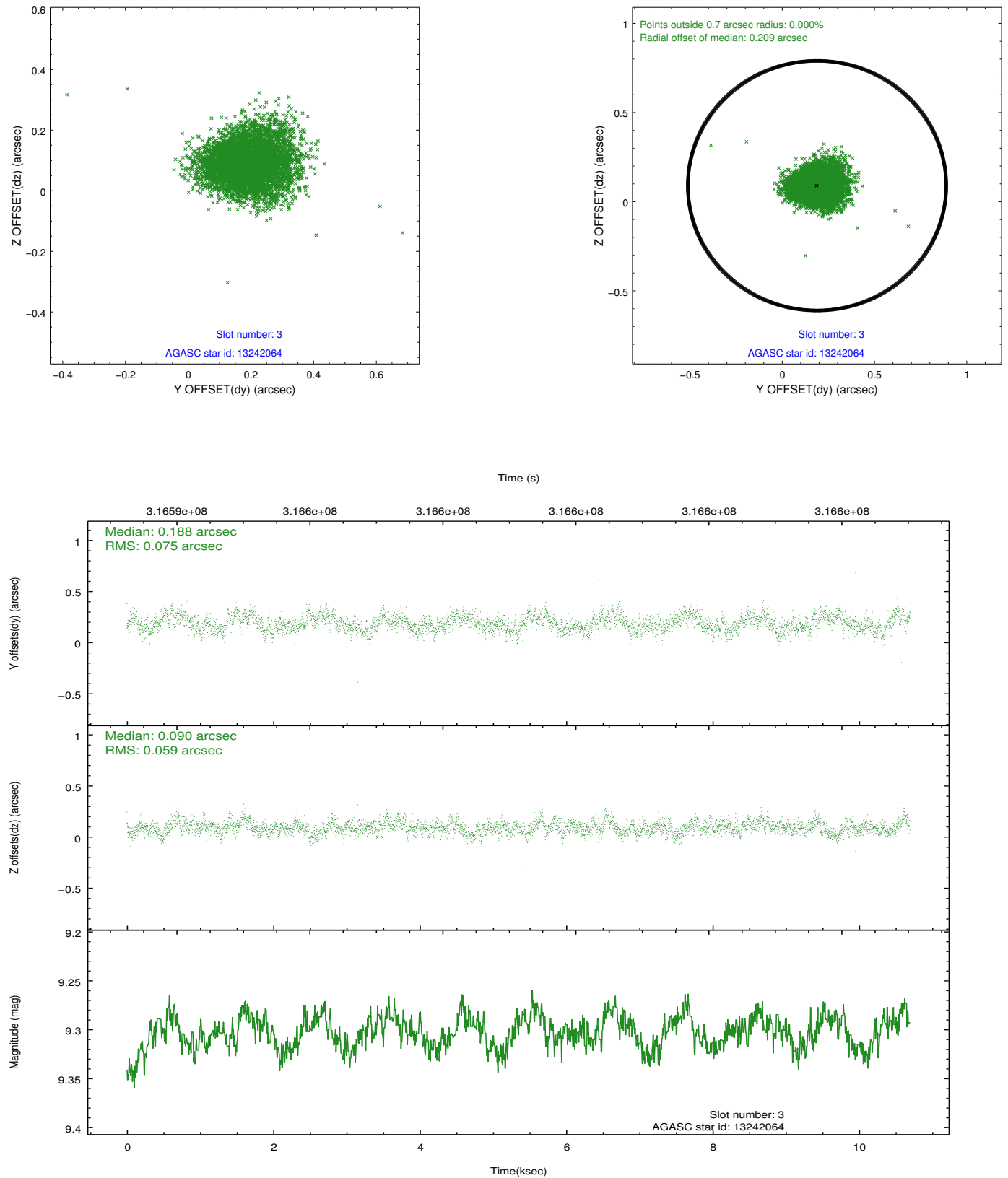


### Slot Statistics

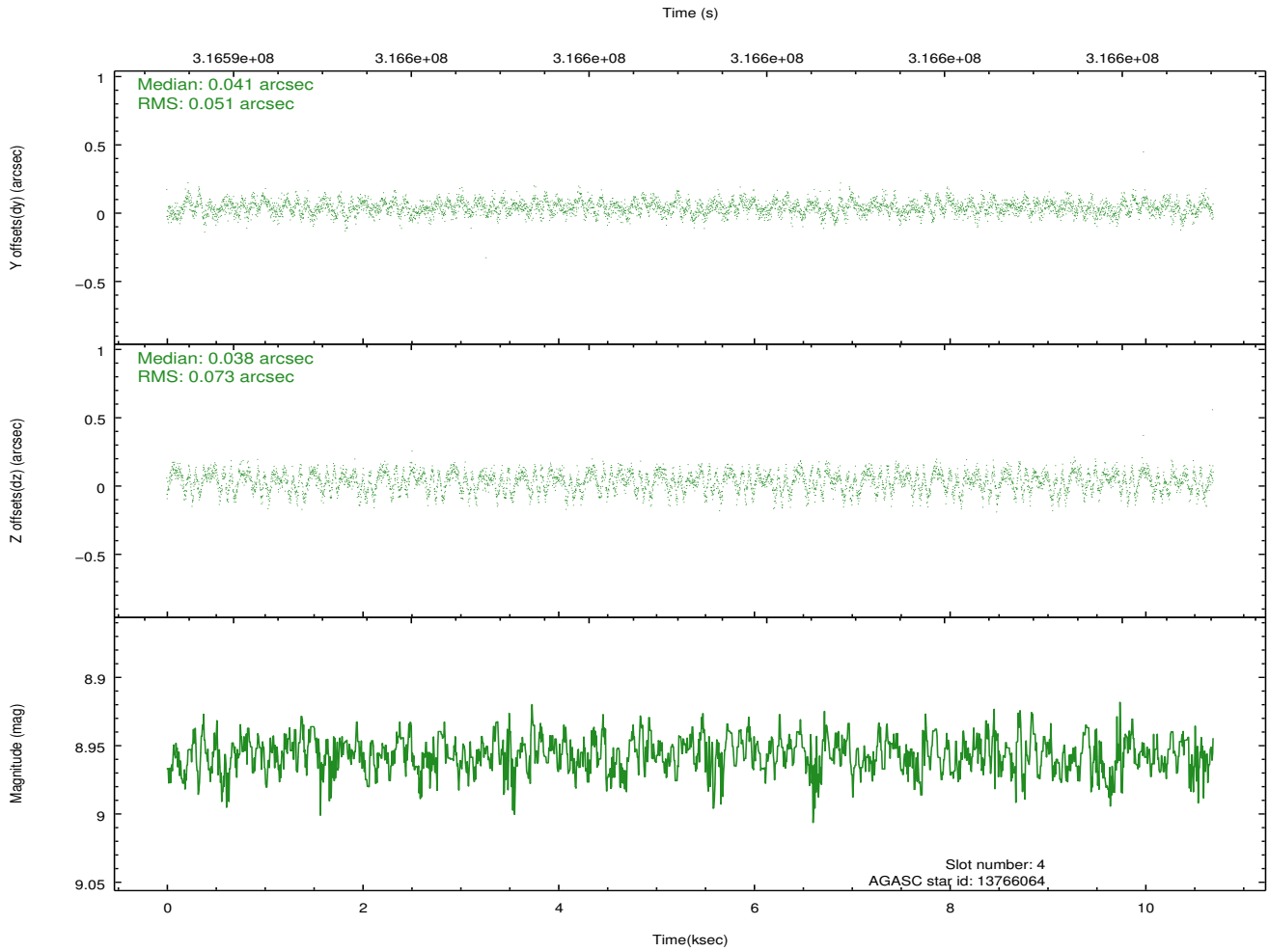
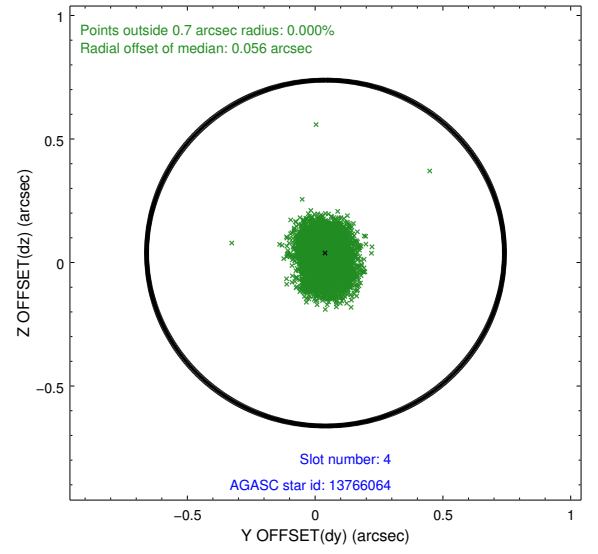
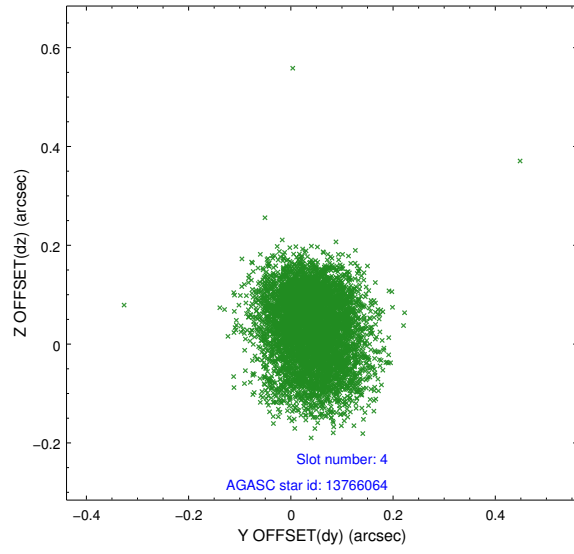
slot	status	id	mag	n_pts	med_dy	med_dz	dr1	dr2	ra	dec	mean_y	mean_z
0	FID	ACIS-S-2	7.10	2608	-0.076	-0.062	0.007	0.012	0.000000	0.000000	-767.42	-1735.44
1	FID	ACIS-S-4	7.19	2608	0.204	0.053	0.006	0.010	0.000000	0.000000	2145.91	172.65
2	FID	ACIS-S-5	7.22	2609	-0.158	0.018	0.006	0.012	0.000000	0.000000	-1819.72	166.85
3	GUIDE	13242064	9.30	5212	0.188	0.090	0.100	0.164	81.830009	1.606239	2306.27	1393.20
4	GUIDE	13766064	8.96	5213	0.041	0.038	0.095	0.152	81.700439	2.068290	667.16	1938.10
5	GUIDE	13784080	6.83	5217	-0.098	-0.108	0.091	0.139	81.150422	2.353162	-1290.84	872.86
6	GUIDE	13120592	8.13	5216	-0.116	-0.069	0.068	0.105	80.386741	1.864037	-1371.68	-2389.56
7	GUIDE	13243912	6.72	5217	-0.019	0.044	0.057	0.093	81.264652	1.185597	2421.47	-1141.18

## 2.4 Star Slots

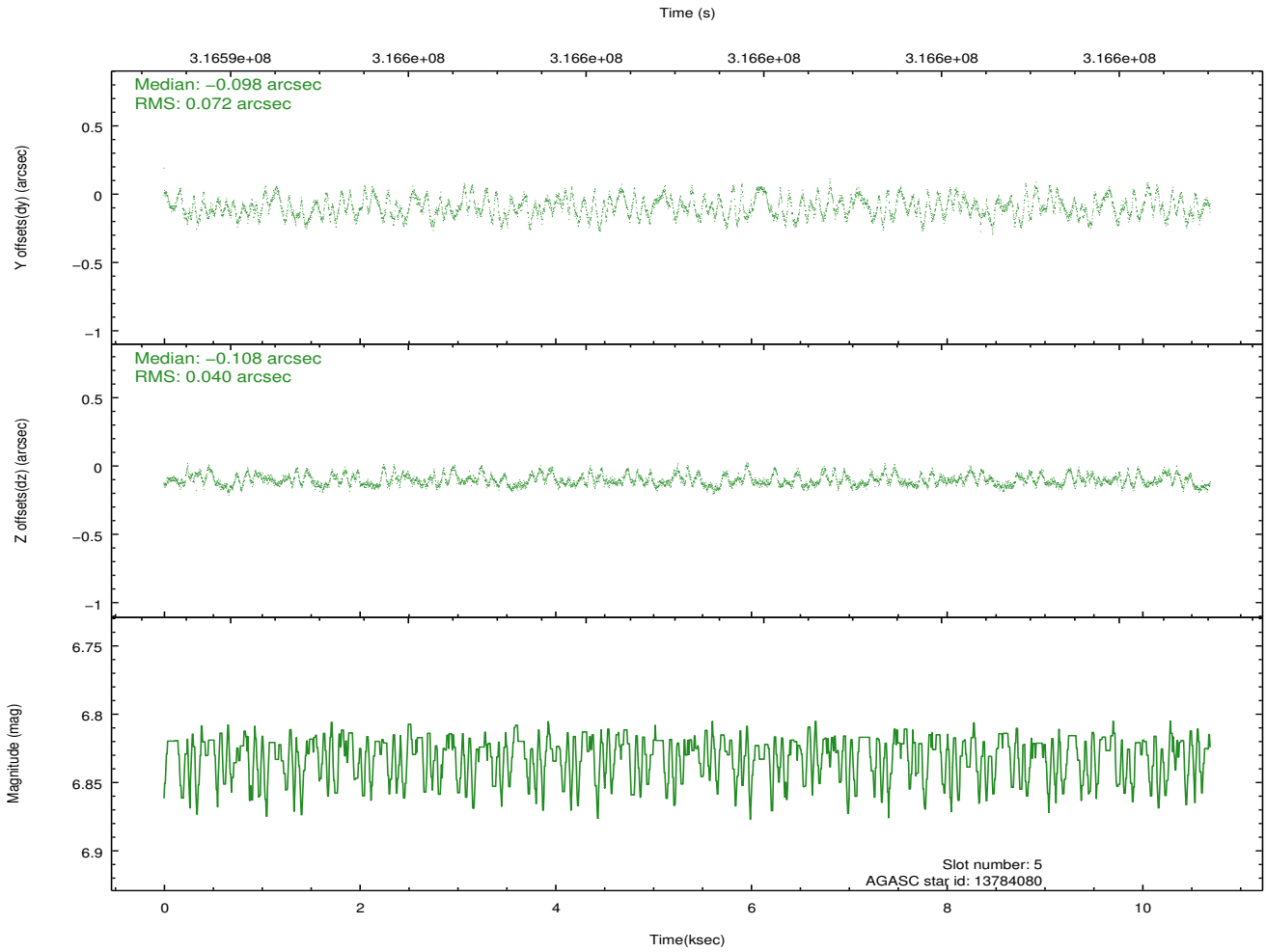
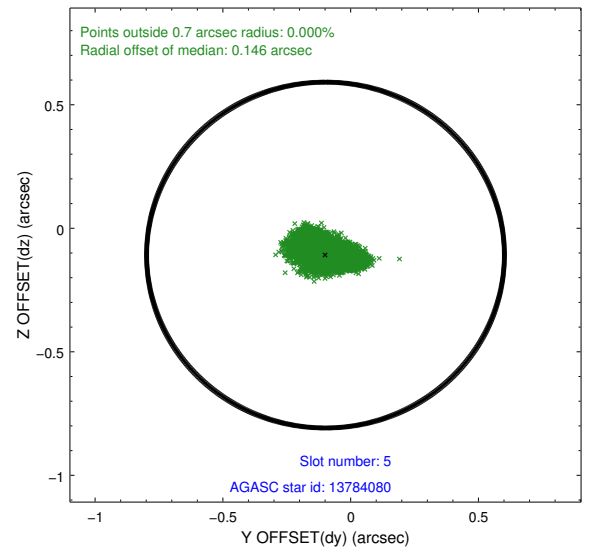
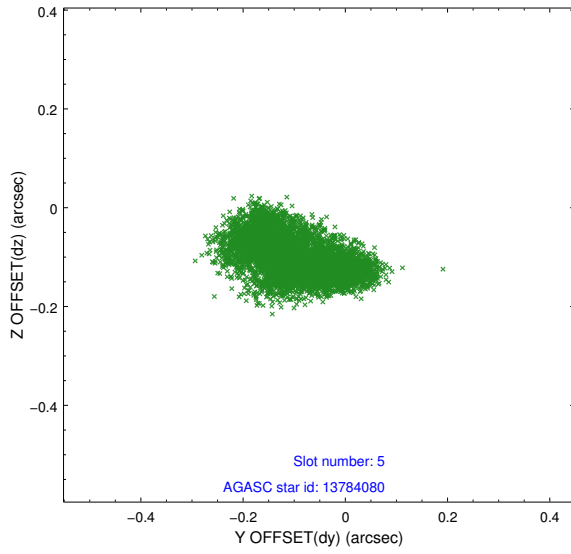
### 2.4.1 Slot 3



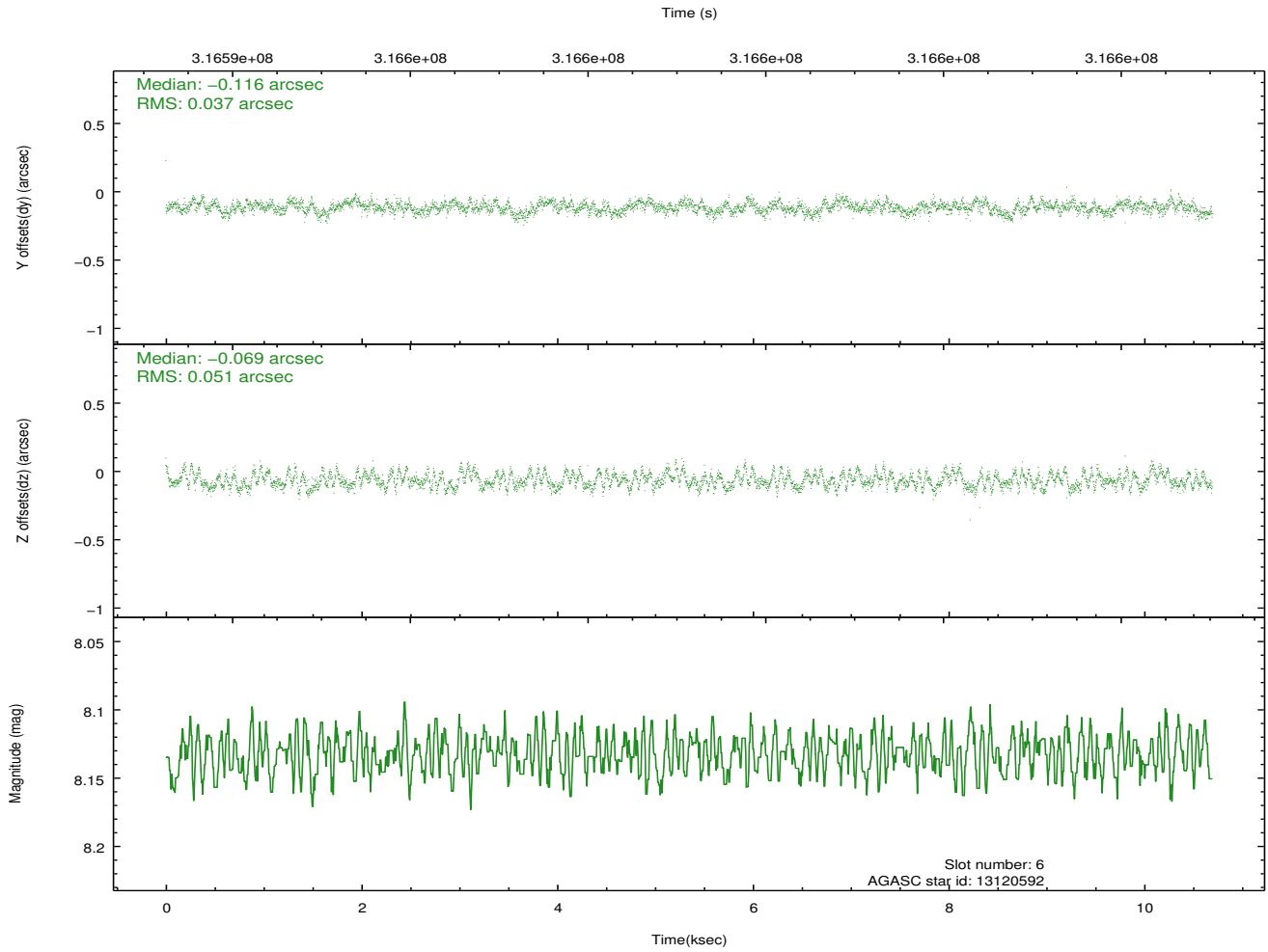
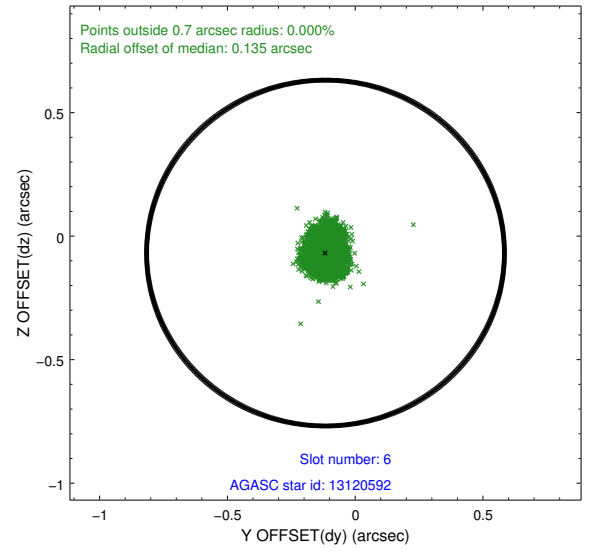
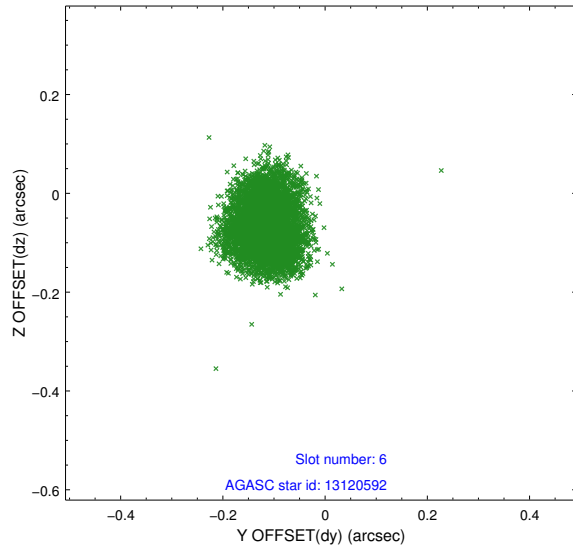
## 2.4.2 Slot 4



### 2.4.3 Slot 5

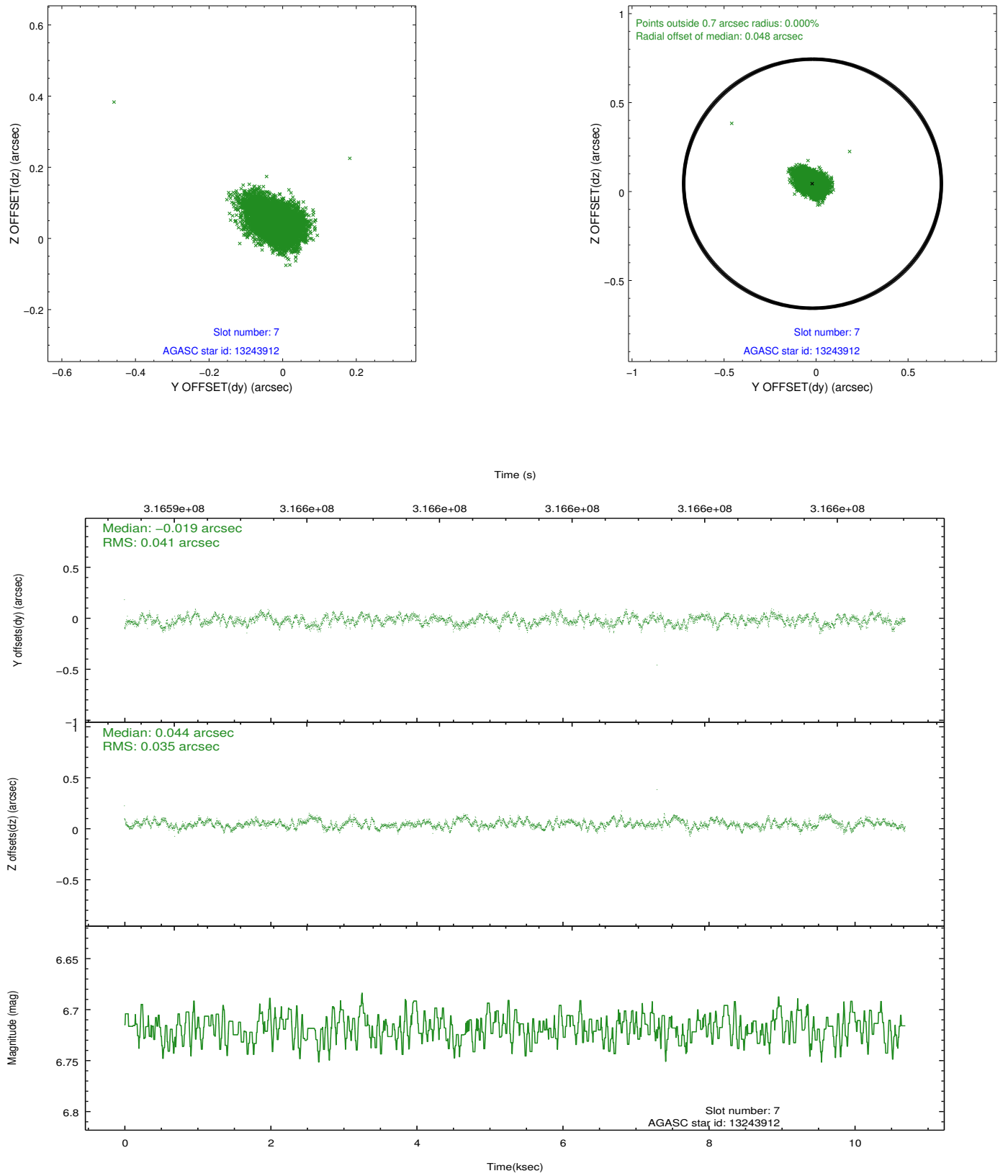


## 2.4.4 Slot 6



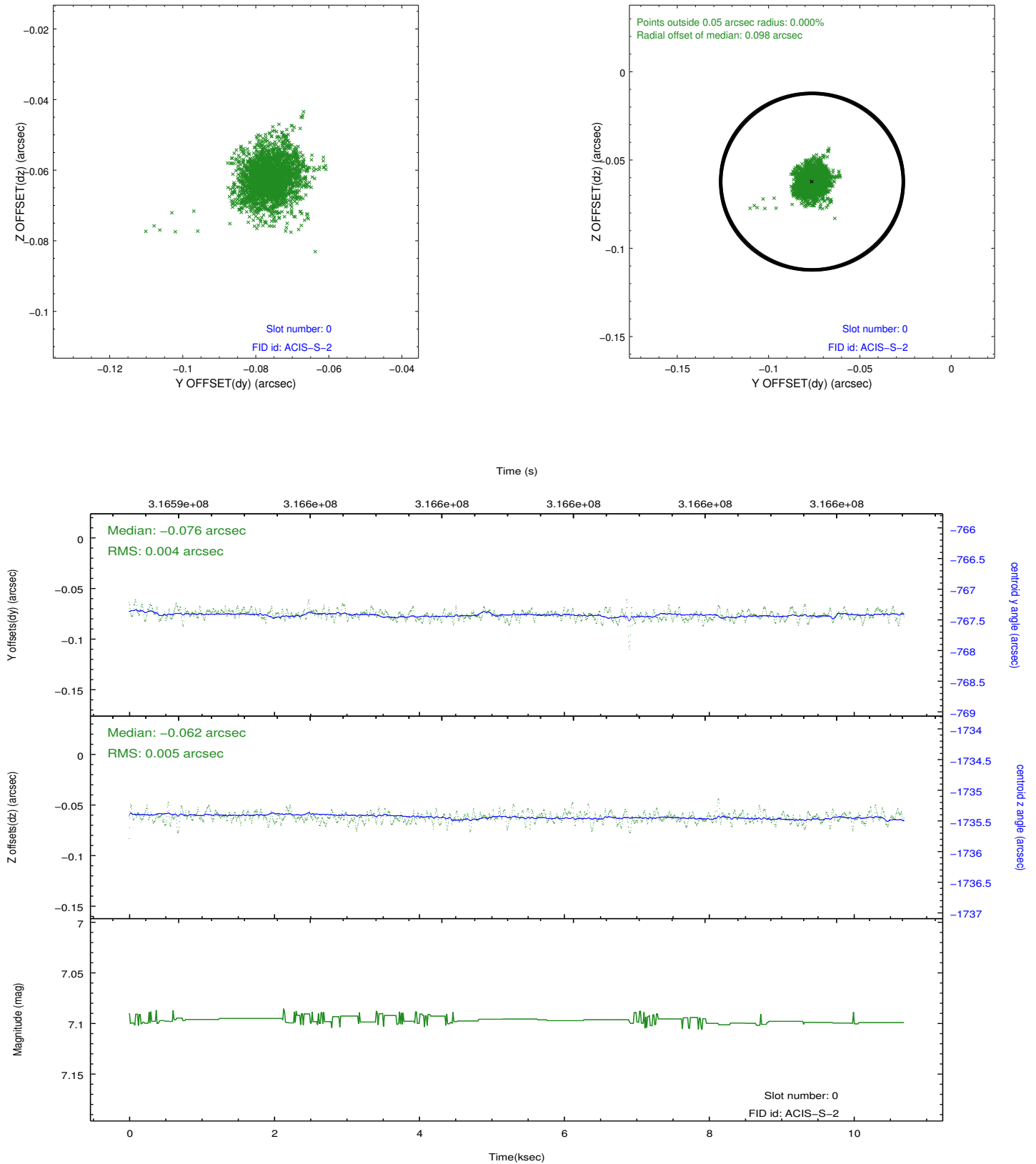


## 2.4.5 Slot 7

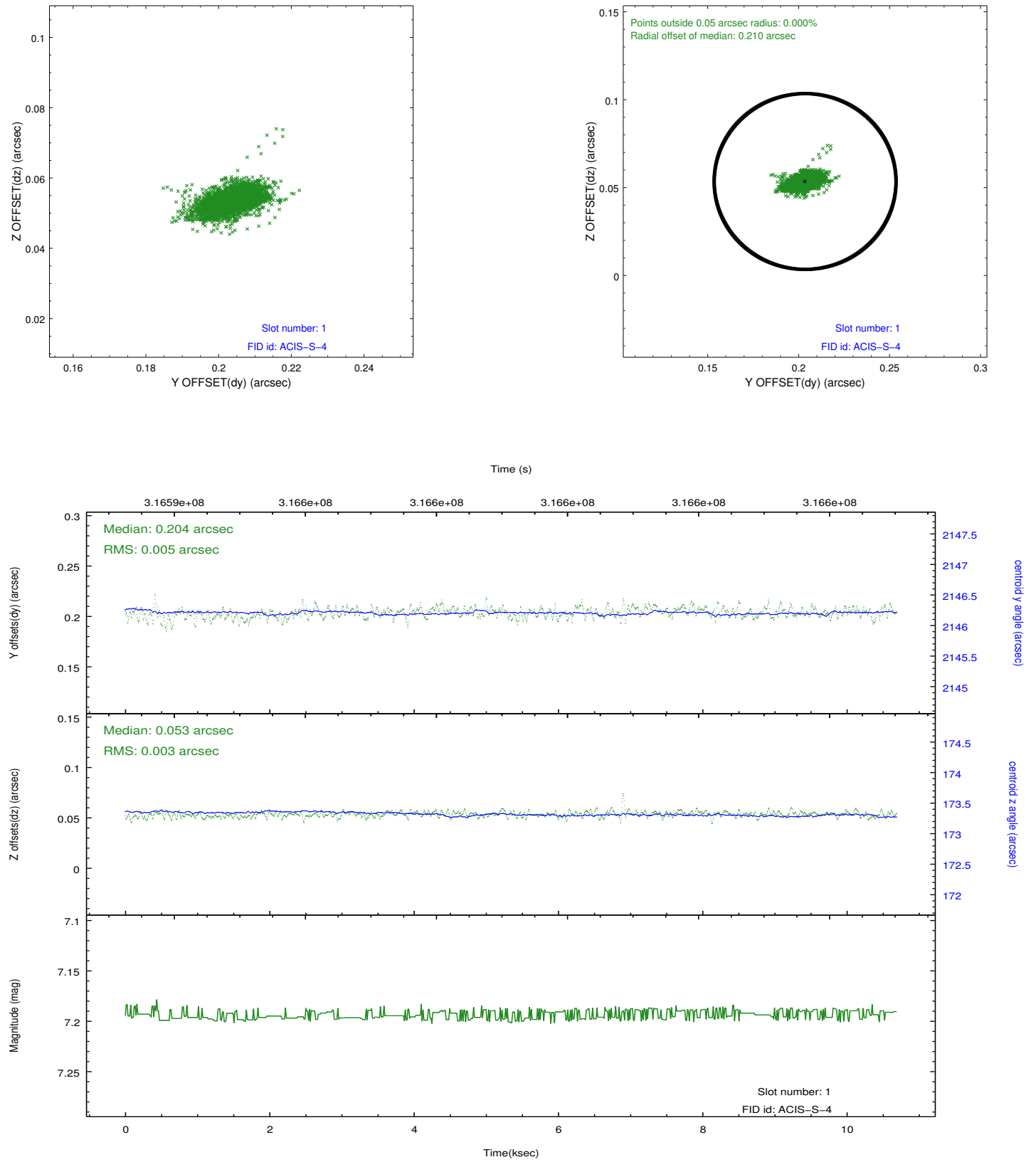


## 2.5 FID Slots

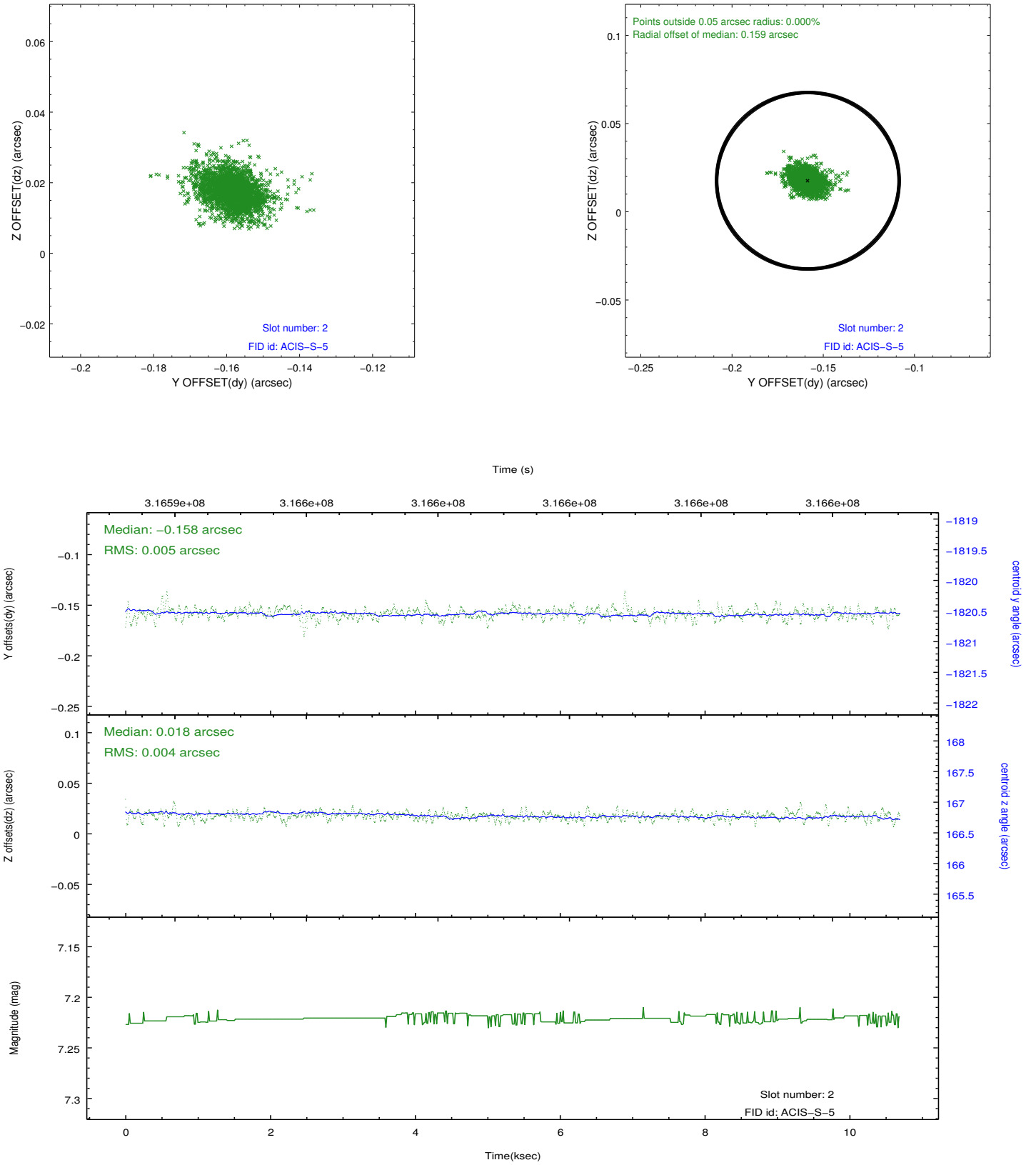
### 2.5.1 Slot 0



## 2.5.2 Slot 1



### 2.5.3 Slot 2



# A Summary

## A.1 Status

V&V Scientist	Jen Lauer
V&V Date (YYYY-MM-DD)	2012.05.10
V&V Edition	1
V&V Disposition and Status	OK
V&V Charge Time	9.65119996

## A.2 Comments

Joint proposal: CX0-HST