

V&V Reference Report

L2 ASCDS Version : 8.4.4

Observation 10789 - L2 Version 2
Chandra X-Ray Center

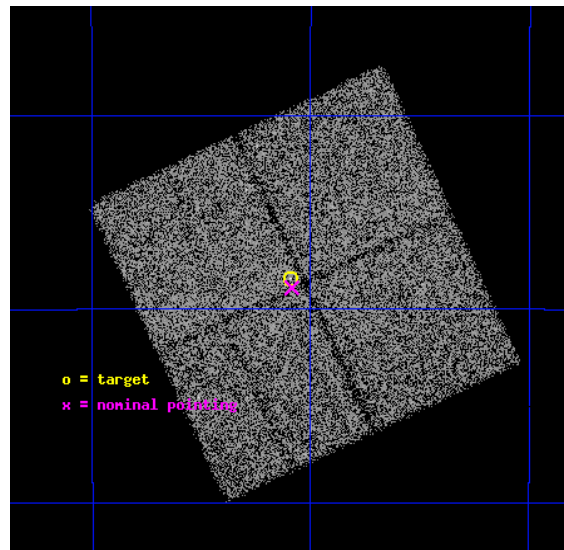
L2 Processing Date : May 22 2012

Contents

1	Front	2
2	OBI	3
2.1	OBI	3
2.1.1	Images	3
2.1.2	Bias	3
2.1.3	Parameters	4
2.1.4	Events	4
2.2	Compared Parameters	5
2.3	Aspect	6
2.4	Star Slots	9
2.4.1	Slot 3	9
2.4.2	Slot 4	10
2.4.3	Slot 5	11
2.4.4	Slot 6	12
2.4.5	Slot 7	13
2.5	FID Slots	14
2.5.1	Slot 0	14
2.5.2	Slot 1	15
2.5.3	Slot 2	16
A	Summary	17
A.1	Status	17
A.2	Comments	17

1 Front

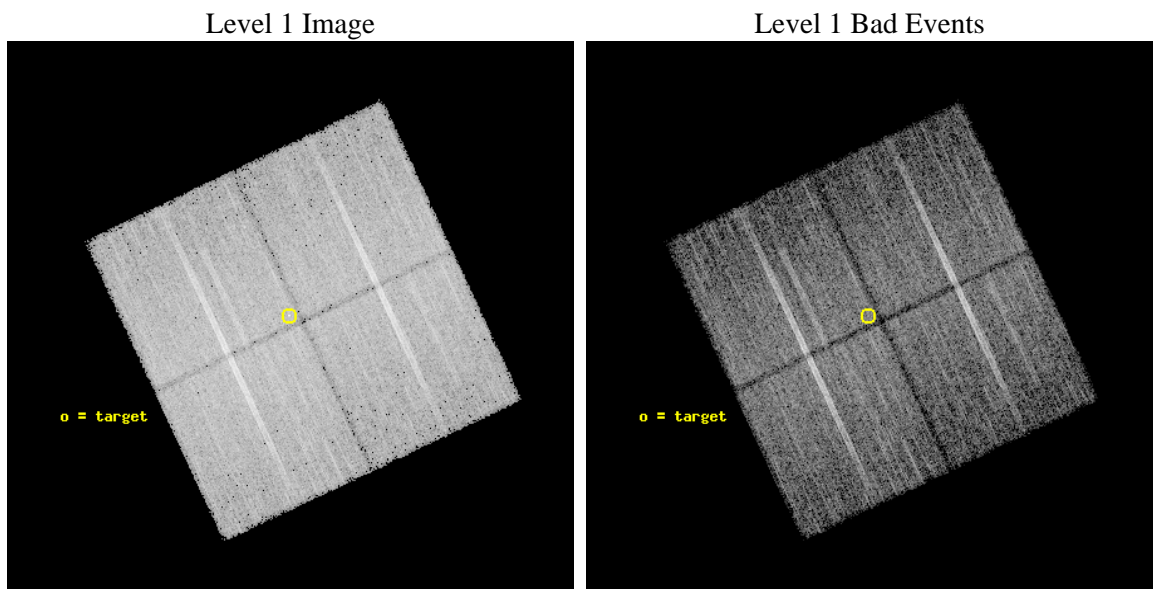
seq_num	200506	Sequence number
obs_id	10789	Observation id
title	ToO Studies with CXO of Pre-Main Sequence Stars Undergoing Optical Outbursts	Proposal title
observer	Professor David Weintraub	Principal investigator
object	EX Lupi	Source name
dtcycle	0	
cycle	P	events from which exps? Prim/Second/Both
ra_targ	240.772917	Observer's specified target RA [deg]
dec_targ	-40.307	Observer's specified target Dec [deg]
ra_nom	240.77151552481	Nominal RA [deg]
dec_nom	-40.314991307469	Nominal Dec [deg]
roll_nom	244.856065428	Nominal Roll [deg]
revision	2	Processing version of data
ontime	15385.300118327	Sum of GTIs [s]
livetime	15184.279845788	Livetime [s]
ontime0	15385.300118327	Sum of GTIs [s]
ontime1	15385.300118327	Sum of GTIs [s]
ontime2	15385.300118327	Sum of GTIs [s]
ontime3	15385.300118327	Sum of GTIs [s]
l2events	66373	Number of level 2 events



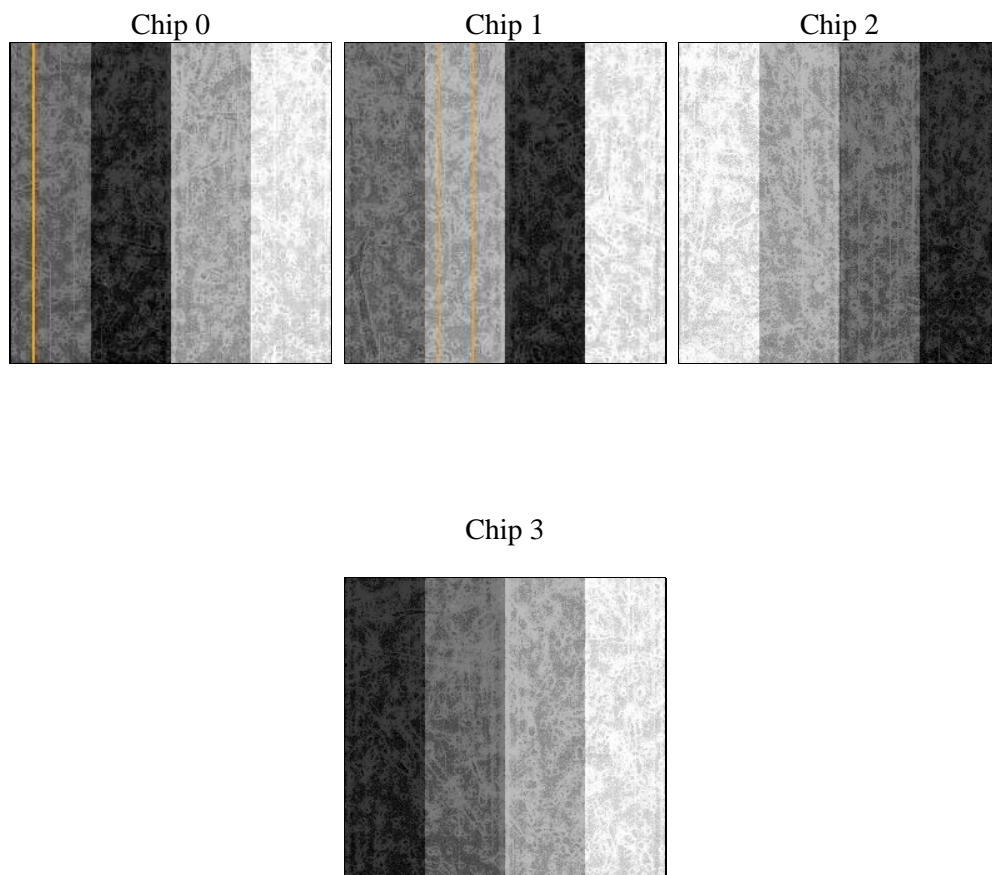
2 OBI

2.1 OBI

2.1.1 Images



2.1.2 Bias



2.1.3 Parameters

obi_num	0	Obi number	sched_exp_time	15247.045000	[s] Scheduled observation exposure time
ascdsver	8.4.4	Processing system revision	ontime	15385.300118327	Sum of GTIs [s]
caldsver	4.4.9	 	ontime0	15385.300118327	Sum of GTIs [s]
date	2012-05-22T10:29:59	Date and time of file creation	ontime1	15385.300118327	Sum of GTIs [s]
revision	2	Processing version of data	ontime2	15385.300118327	Sum of GTIs [s]
			ontime3	15385.300118327	Sum of GTIs [s]
			l1events	603707	Number of level 1 events

2.1.4 Events

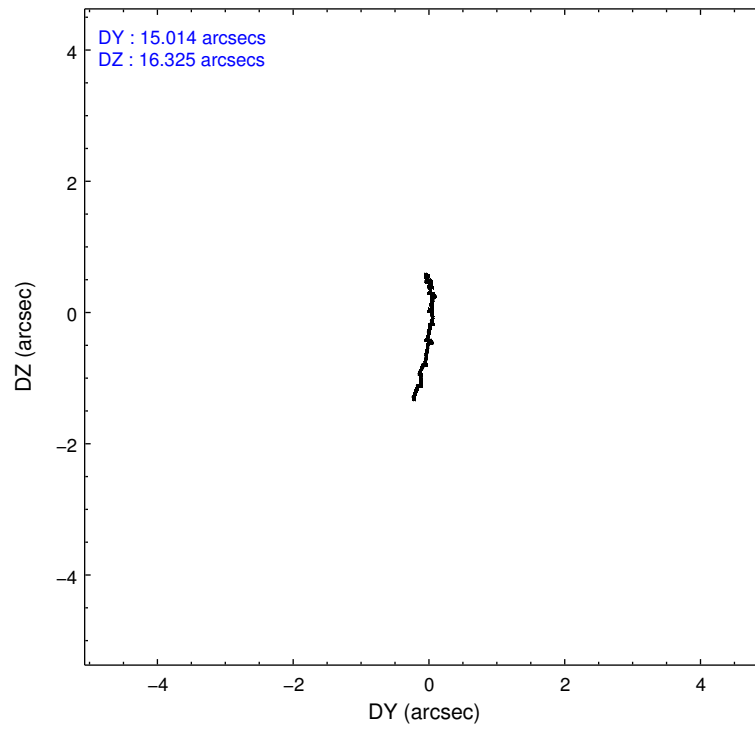
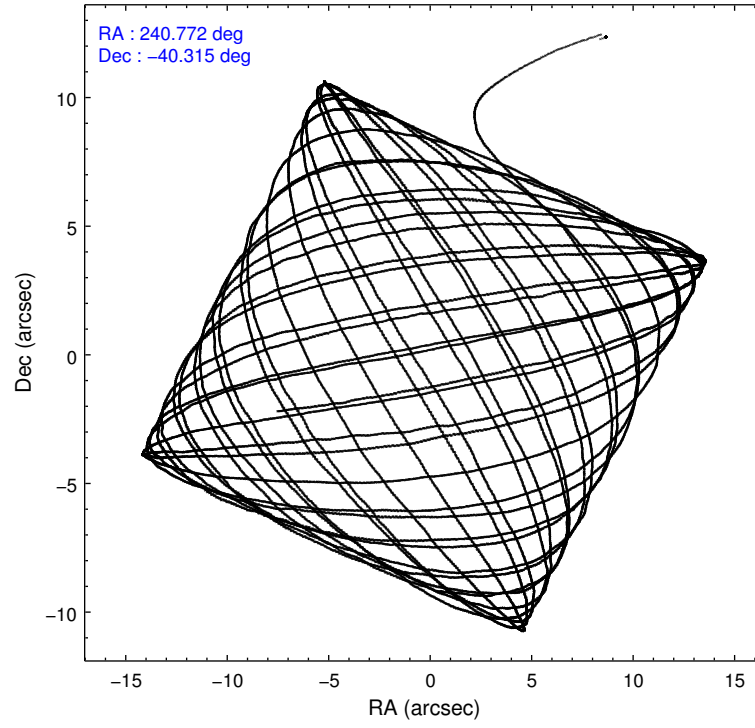
	ccd 0	ccd 1	ccd 2	ccd 3
level 1 events	143967	144355	158893	156492
rejected events	124637	124225	140158	137473
rejected %	86%	86%	88%	87%

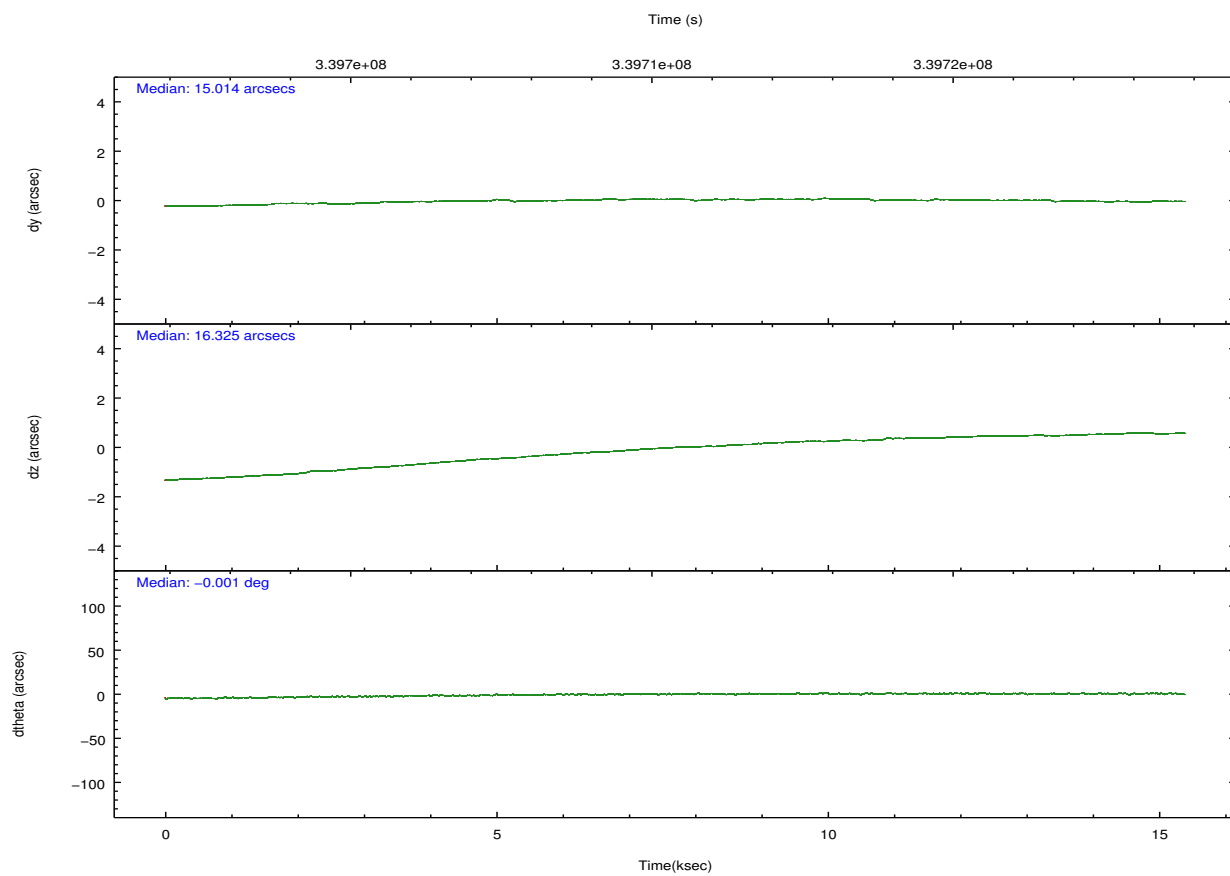
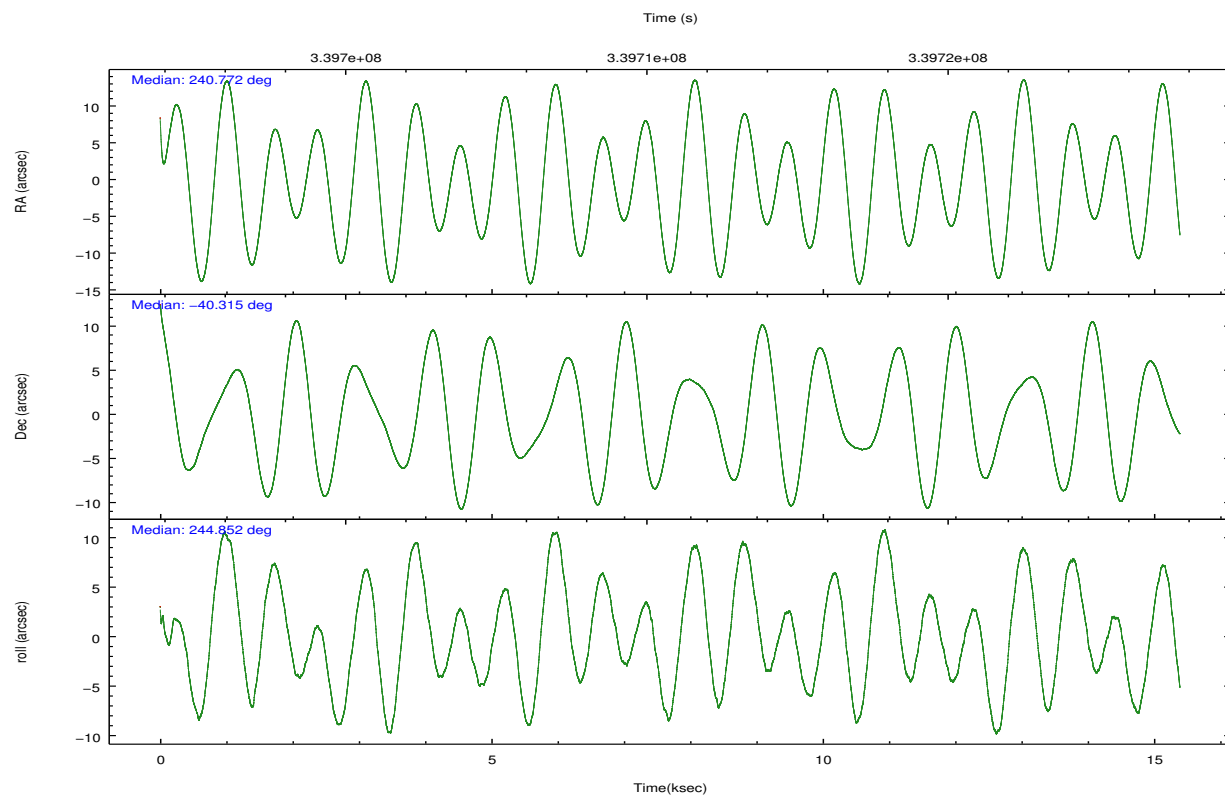
	ccd 0	ccd 1	ccd 2	ccd 3
grade 0 events	8528	8209	8766	8727
	5%	5%	5%	5%
grade 1 events	101	97	117	103
	0%	0%	0%	0%
grade 2 events	4394	4852	4073	4029
	3%	3%	2%	2%
grade 3 events	1785	1888	1662	1751
	1%	1%	1%	1%
grade 4 events	1739	1807	1700	1819
	1%	1%	1%	1%
grade 5 events	6506	7092	6290	7523
	4%	4%	3%	4%
grade 6 events	3580	4103	3233	3432
	2%	2%	2%	2%
grade 7 events	117334	116307	133052	129108
	81%	80%	83%	82%

2.2 Compared Parameters

Parameter	Planned	Actual	Parameter	Planned	Actual
Instrument	ACIS	ACIS	Obspar format version number	7	7
Detector	ACIS-0123	ACIS-0123	Obspar file type	PREDICTED	ACTUAL
Grating	NONE	NONE	Obspar update status	NONE	UPDATED
Data mode	FAINT	FAINT	Number of optional ACIS chips dropped	0	0
Observation mode	POINTING	POINTING	On-chip summing requested	N	N
[deg] Pointing RA	240.768278	240.7715155248085	Subarray requested	NONE	NONE
[deg] Pointing Dec	-40.287620	-40.31499130746904	Alternating exposures requested	N	N
[deg] Pointing Roll	244.645296	244.8560654280007	[s] Primary exposure time	0.000000	3.1
[mm] SIM focus pos	-0.782348	-0.7809083437167272			
[mm] SIM defocus	0	0.001439871863259334			
[mm] SIM translation stage pos	-233.592463	-233.5874344608287			
[mm] SIM translation stage offset	0	-0.005018542100998502			
[s] Observation start time (MET)	339702823.184000	339701621.49226			
Observation start date	2008-10-06T17:52:38	2008-10-06T17:33:41			
[s] Observation end time (MET)	339718070.184000	339718312.59308			
Observation end date	2008-10-06T22:06:45	2008-10-06T22:11:52			
Read mode	TIMED	TIMED			

2.3 Aspect



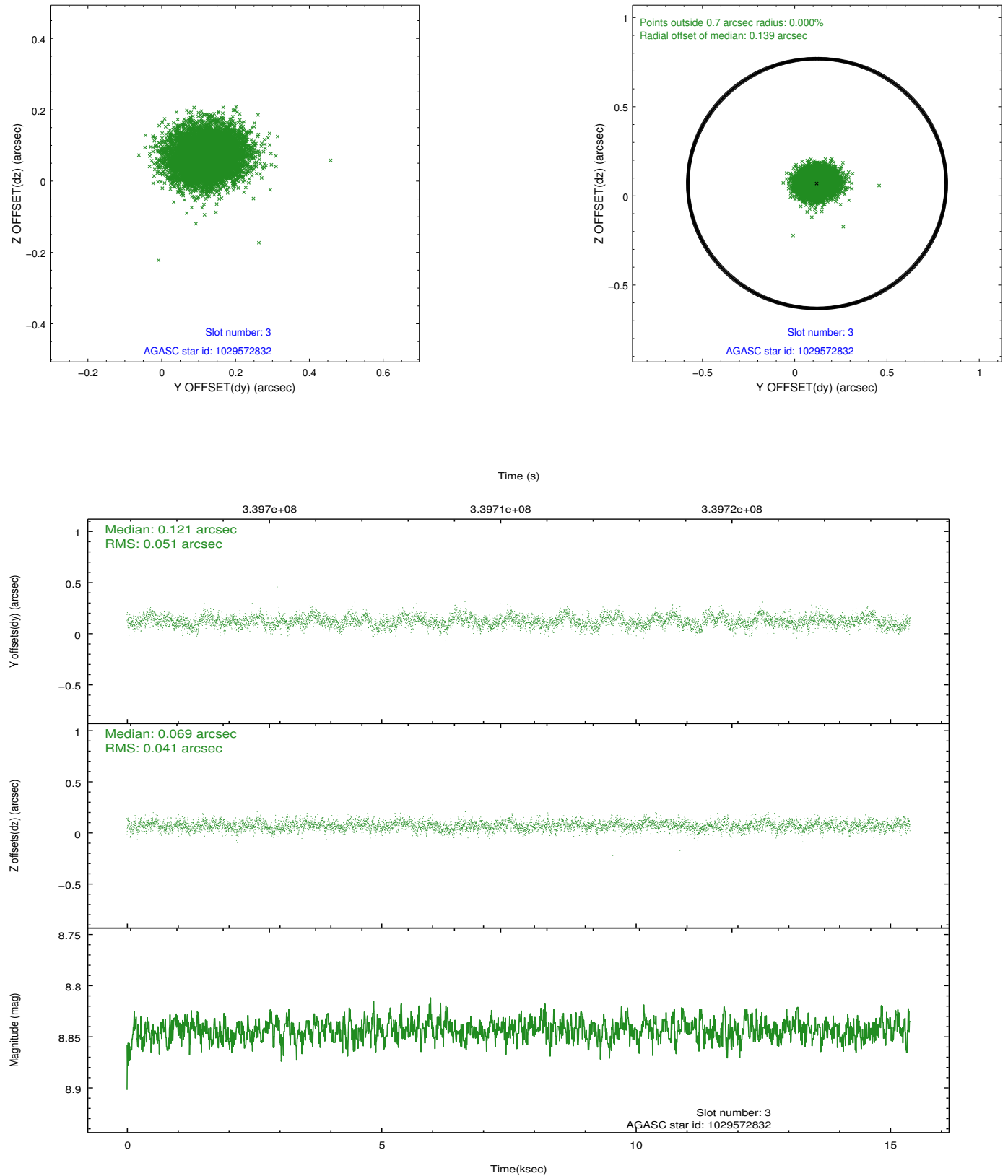


Slot Statistics

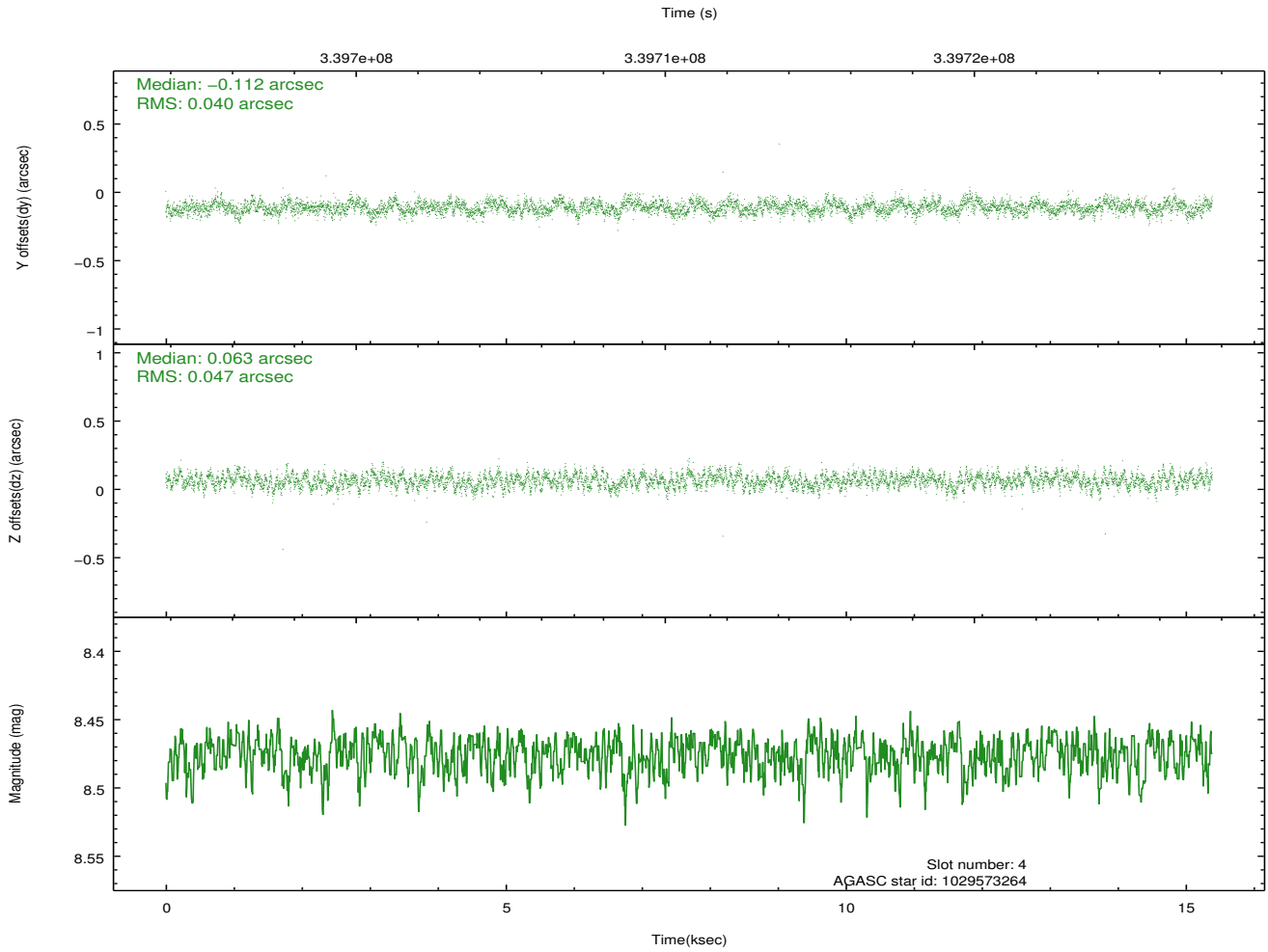
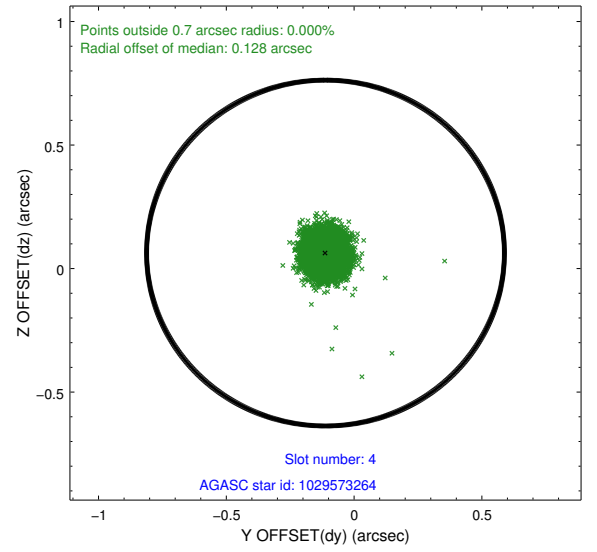
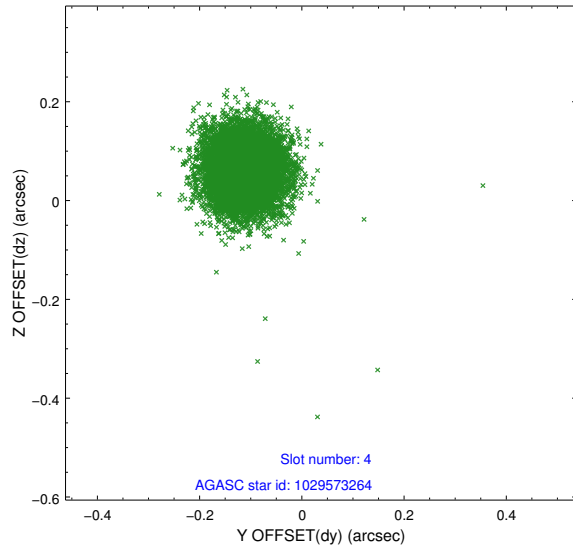
slot	status	id	mag	n_pts	med_dy	med_dz	dr1	dr2	ra	dec	mean_y	mean_z
0	FID	ACIS-I-1	7.10	3754	0.066	-0.038	0.015	0.045	0.000000	0.000000	924.52	-839.84
1	FID	ACIS-I-5	7.09	3754	-0.225	0.063	0.014	0.027	0.000000	0.000000	-1823.69	1057.64
2	FID	ACIS-I-6	7.10	3754	0.070	0.046	0.014	0.024	0.000000	0.000000	389.80	1702.42
3	GUIDE	1029572832	8.84	7498	0.121	0.069	0.070	0.114	240.911636	-41.020487	2218.09	1481.95
4	GUIDE	1029573264	8.48	7506	-0.112	0.063	0.066	0.104	241.313581	-40.319539	-532.55	1403.85
5	GUIDE	1029575760	7.99	7505	0.088	-0.057	0.067	0.106	241.064770	-40.844631	1468.08	1589.07
6	GUIDE	1029578000	7.72	7503	-0.082	-0.043	0.066	0.109	241.211449	-40.737672	949.61	1787.61
7	GUIDE	1029580448	9.64	7464	-0.019	-0.029	0.121	0.190	240.622045	-39.636367	-1944.29	-1370.29

2.4 Star Slots

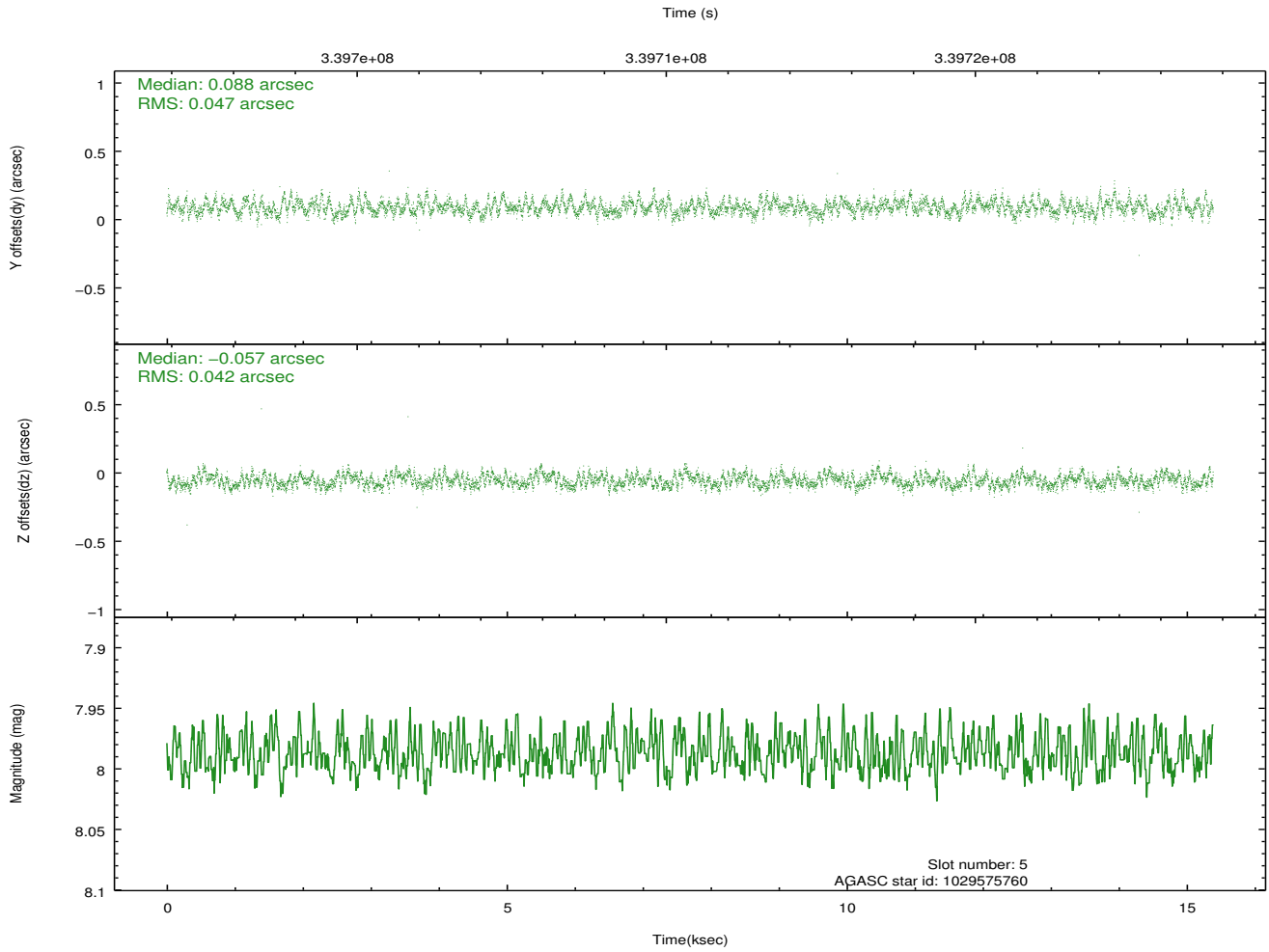
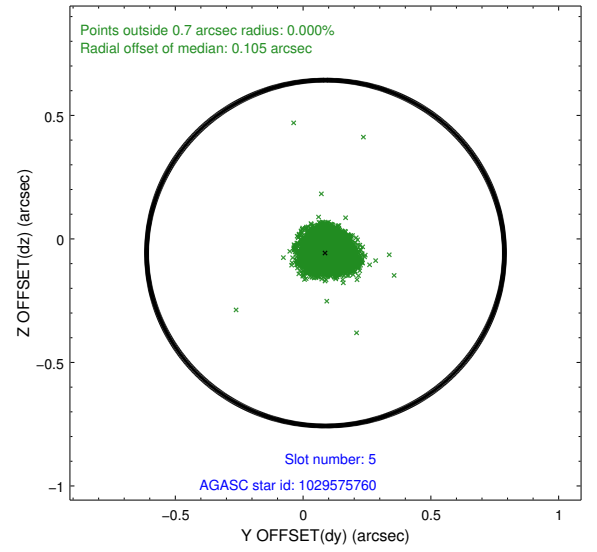
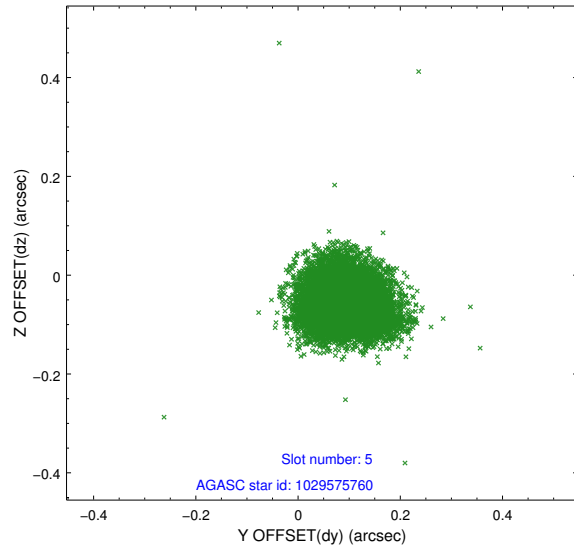
2.4.1 Slot 3



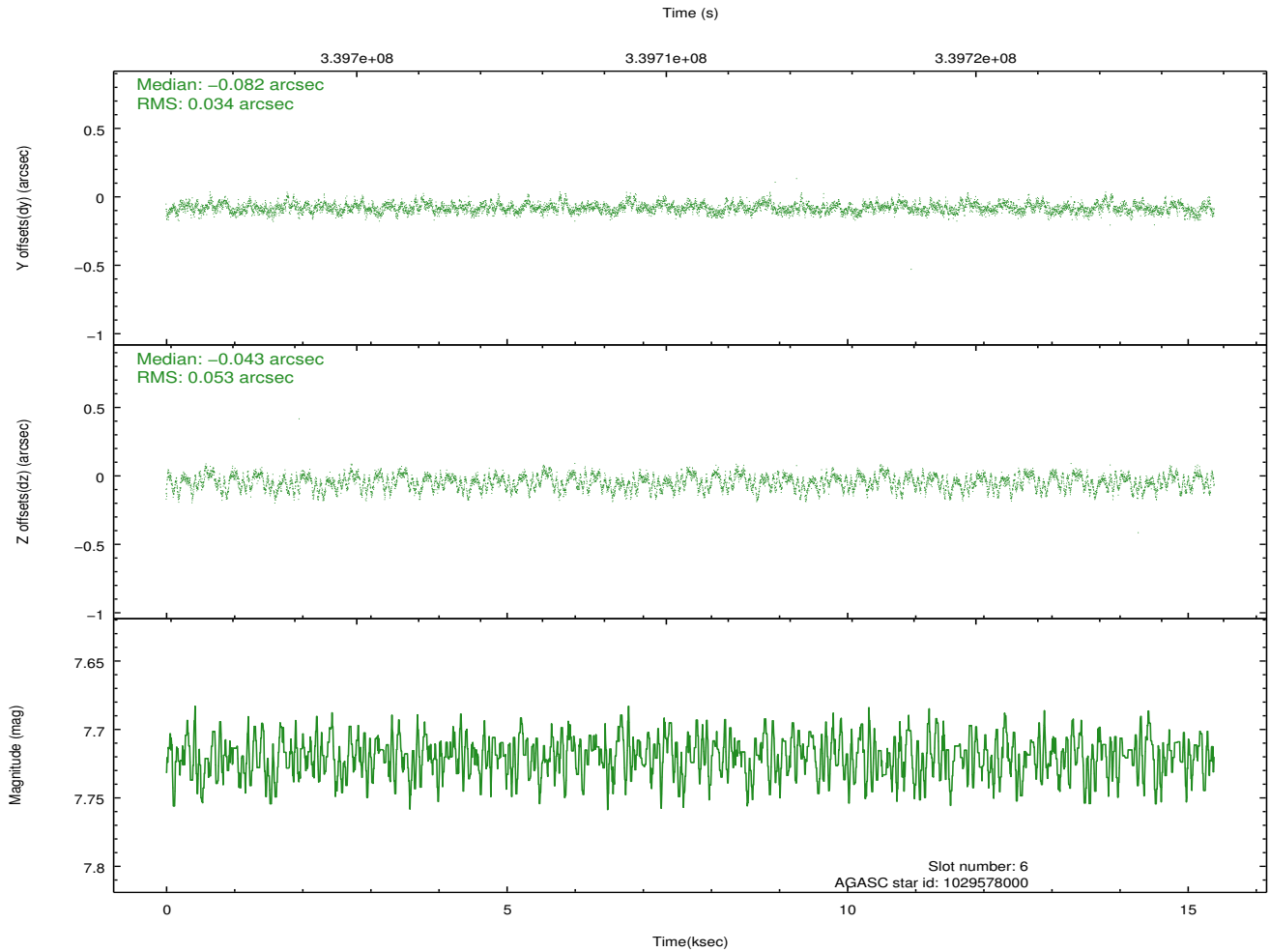
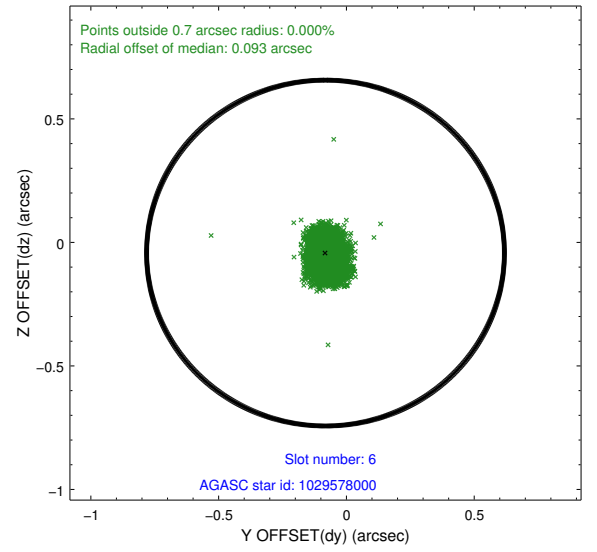
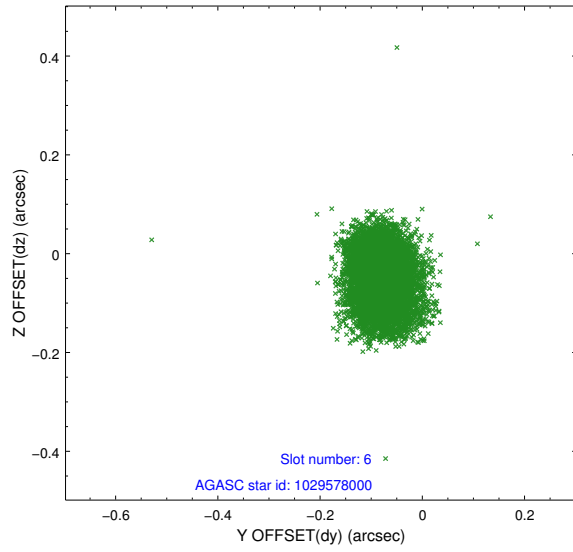
2.4.2 Slot 4



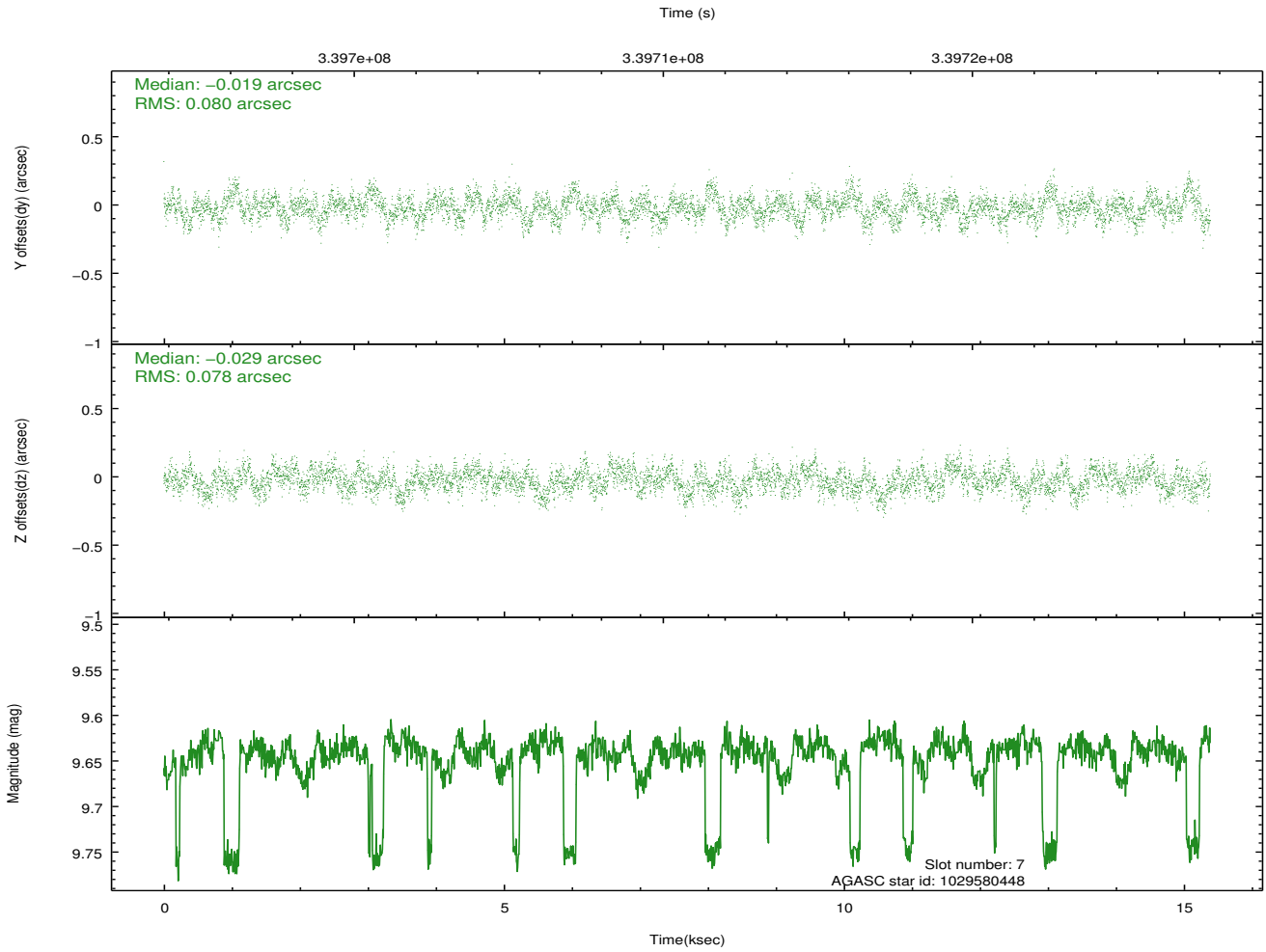
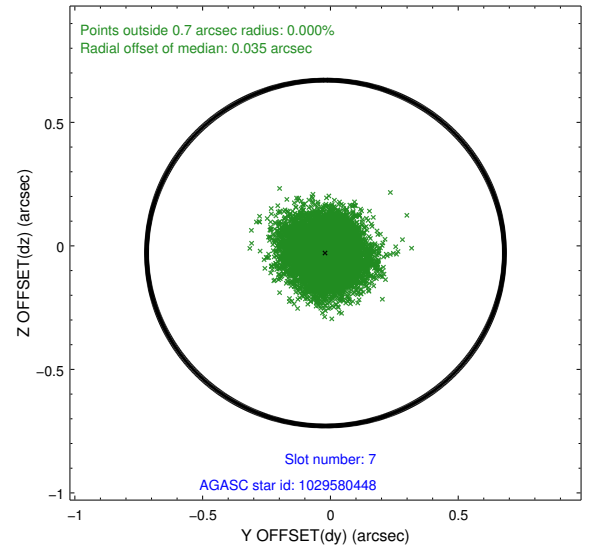
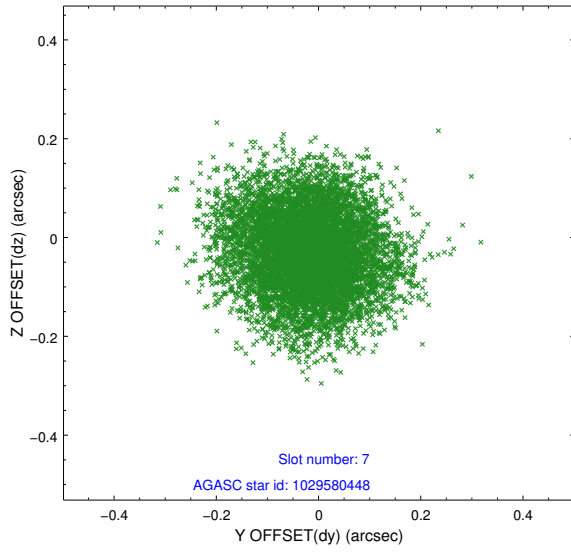
2.4.3 Slot 5



2.4.4 Slot 6

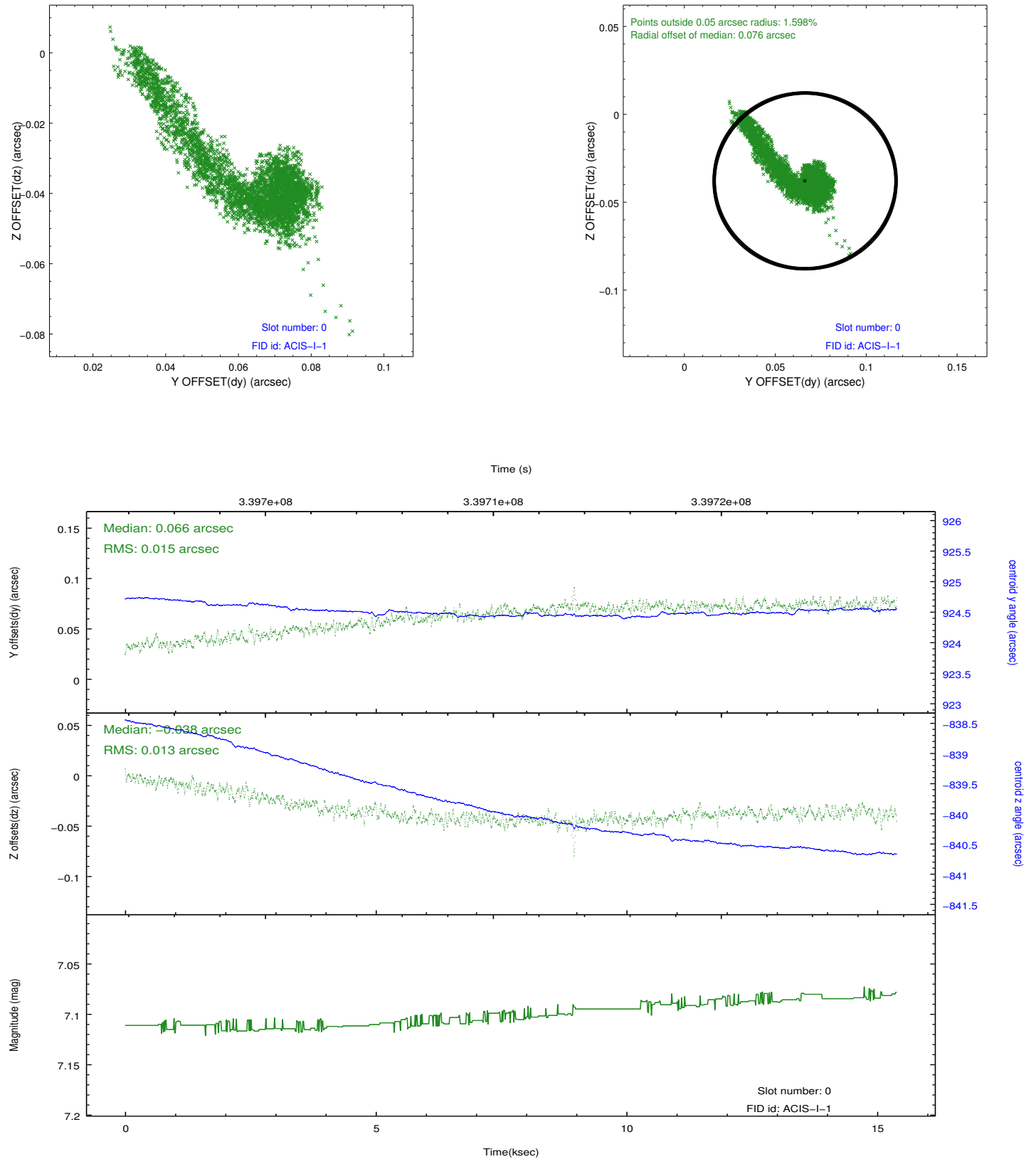


2.4.5 Slot 7

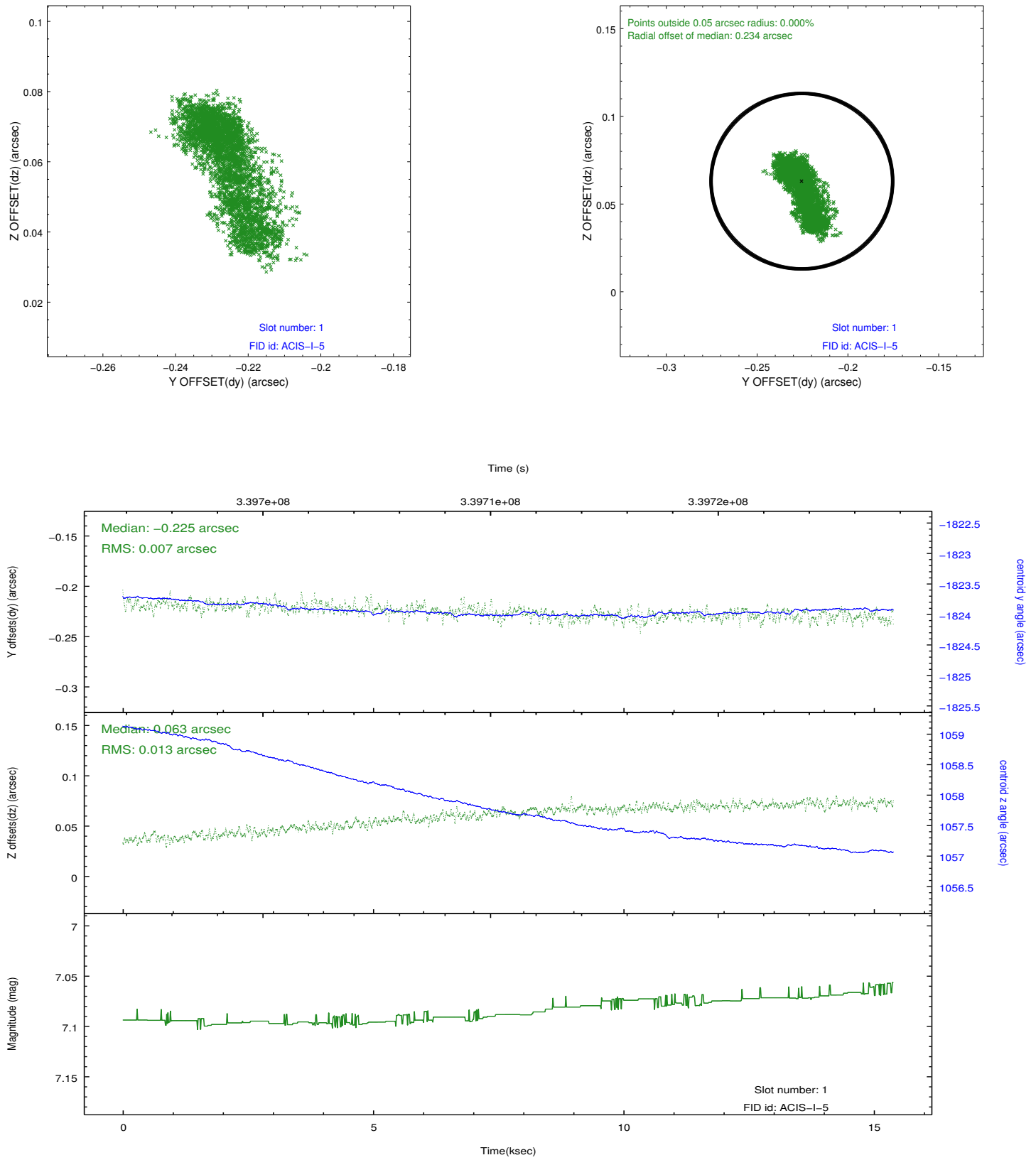


2.5 FID Slots

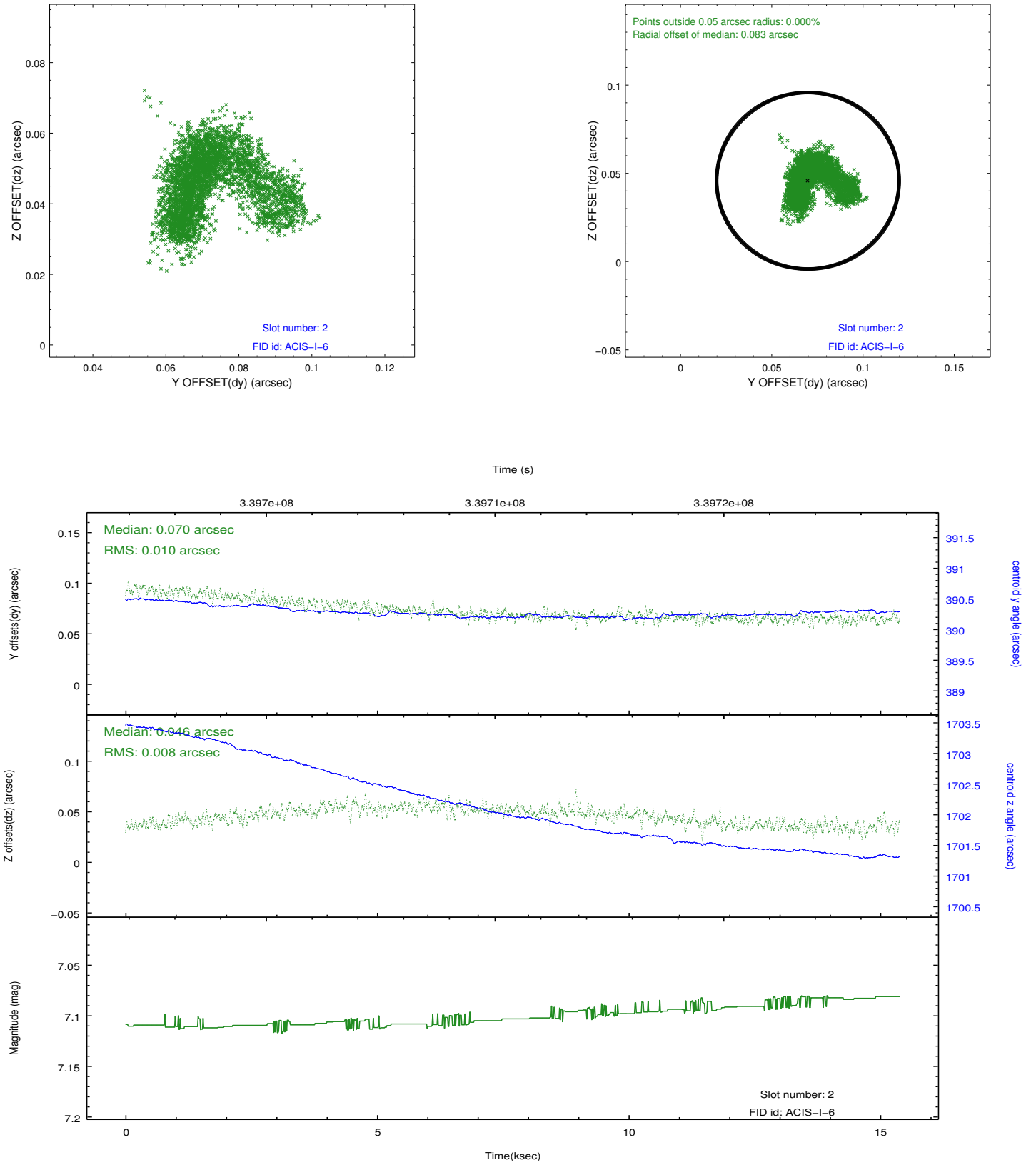
2.5.1 Slot 0



2.5.2 Slot 1



2.5.3 Slot 2



A Summary

A.1 Status

V&V Scientist	Jen Lauer
V&V Date (YYYY-MM-DD)	2012.05.30
V&V Edition	1
V&V Disposition and Status	OK
V&V Charge Time	15.3853001

A.2 Comments

This observation makes up time lost in obsid 8925 due to issues with the ACIS instrument.