

V&V Reference Report

L2 ASCDS Version : 8.4.4

Observation 9785 - L2 Version 2
Chandra X-Ray Center

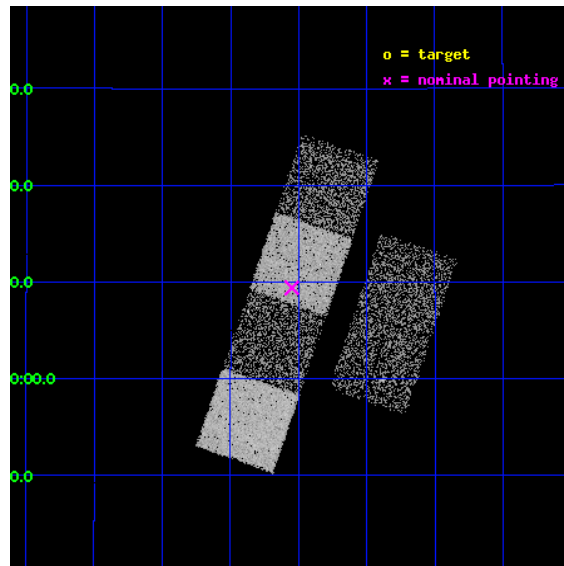
L2 Processing Date : May 7 2012

Contents

1	Front	2
2	OBI	3
2.1	OBI	3
2.1.1	Images	3
2.1.2	Bias	3
2.1.3	Parameters	4
2.1.4	Events	4
2.2	Compared Parameters	5
2.3	Aspect	6
2.4	Star Slots	9
2.4.1	Slot 3	9
2.4.2	Slot 4	10
2.4.3	Slot 5	11
2.4.4	Slot 6	12
2.4.5	Slot 7	13
2.5	FID Slots	14
2.5.1	Slot 0	14
2.5.2	Slot 1	15
2.5.3	Slot 2	16
A	Summary	17
A.1	Status	17
A.2	Comments	17

1 Front

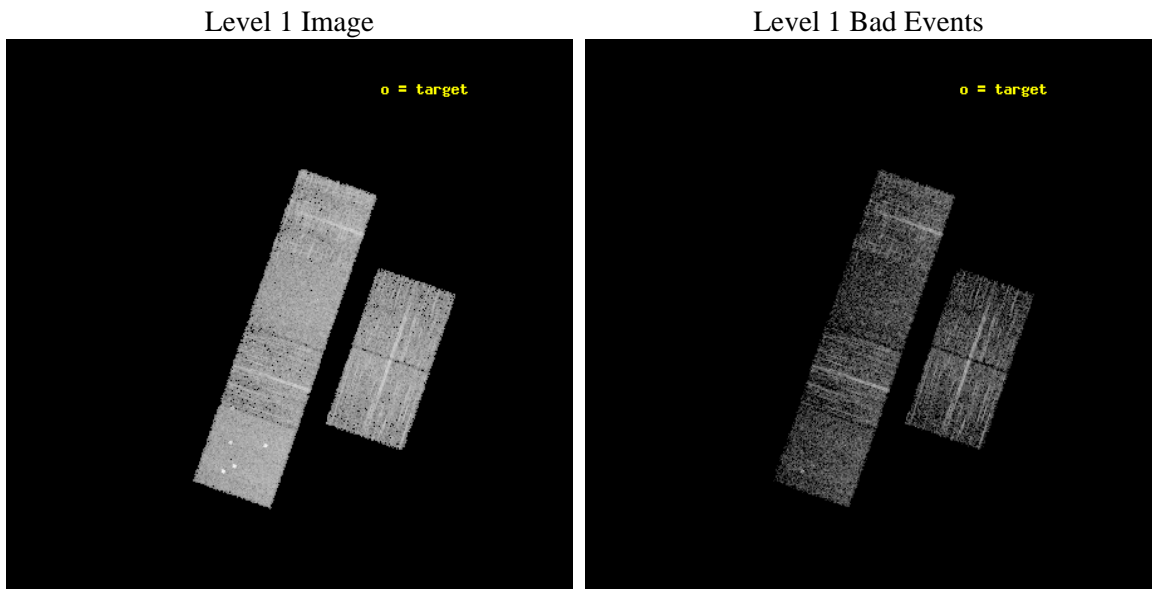
seq_num	100070	Sequence number
obs_id	9785	Observation id
title	High Resolution Imaging and Spectroscopy of 8P/Tuttle	Proposal tit
observer	Dr Damian Christian	Principal investigator
object	8P/Tuttle (2008)	Source name
dtcycle	0	
cycle	P	events from which exps? Prim/Second/Both
ra_targ	24.054167	Observer's specified target RA [deg]
dec_targ	26.219722	Observer's specified target Dec [deg]
ra_nom	25.88739742988	Nominal RA [deg]
dec_nom	18.156867731368	Nominal Dec [deg]
roll_nom	288.97169031386	Nominal Roll [deg]
revision	2	Processing version of data
ontime	3049.4205041528	Sum of GTIs [s]
liveltime	3010.8069055886	Livetime [s]
ontime2	3049.4615441561	Sum of GTIs [s]
ontime3	3049.2973841429	Sum of GTIs [s]
ontime5	3049.3794641495	Sum of GTIs [s]
ontime6	3049.3384241462	Sum of GTIs [s]
ontime7	3049.4205041528	Sum of GTIs [s]
ontime8	3049.2563441396	Sum of GTIs [s]
l2events	37622	Number of level 2 events



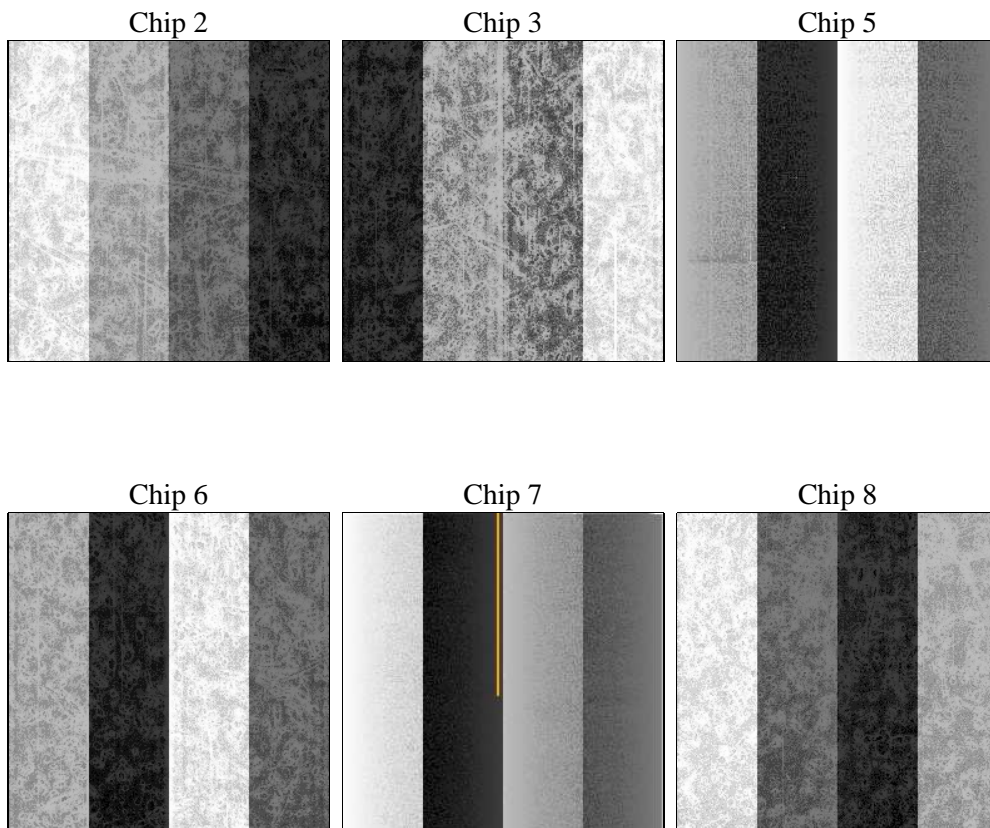
2 OBI

2.1 OBI

2.1.1 Images



2.1.2 Bias



2.1.3 Parameters

obi_num	0	Obi number	sched_exp_time	3000.000000	[s] Scheduled observation exposure time
ascdsver	8.4.4	Processing system revision	ontime	3049.4205041528	Sum of GTIs [s]
caldbver	4.4.9	 	ontime2	3049.4615441561	Sum of GTIs [s]
date	2012-05-07T14:13:12	Date and time of file creation	ontime3	3049.2973841429	Sum of GTIs [s]
revision	2	Processing version of data	ontime5	3049.3794641495	Sum of GTIs [s]
			ontime6	3049.3384241462	Sum of GTIs [s]
			ontime7	3049.4205041528	Sum of GTIs [s]
			ontime8	3049.2563441396	Sum of GTIs [s]
			l1events	183397	Number of level 1 events

2.1.4 Events

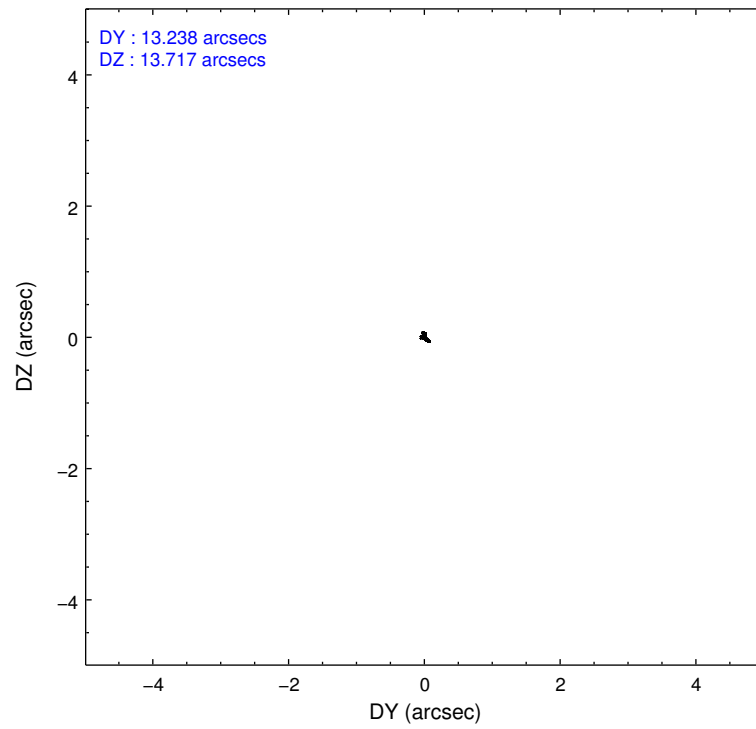
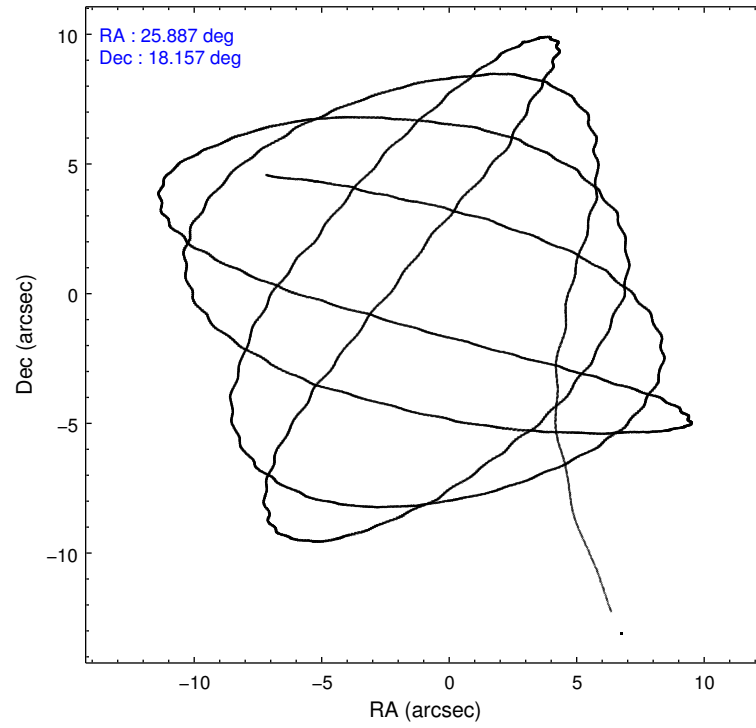
	ccd 2	ccd 3	ccd 5	ccd 6	ccd 7	ccd 8		ccd 2	ccd 3	ccd 5	ccd 6	ccd 7	ccd 8
level 1 events	29466	24654	38356	27334	29431	34156	grade 0 events	937	901	3245	1019	1430	2426
rejected events	26961	22334	19334	24660	16672	26081		3%	3%	8%	3%	4%	7%
rejected %	91%	90%	50%	90%	56%	76%	grade 1 events	20	15	105	19	48	30
								0%	0%	0%	0%	0%	0%
							grade 2 events	641	492	5585	629	2620	1820
								2%	1%	14%	2%	8%	5%
							grade 3 events	250	268	662	299	1175	921
								0%	1%	1%	1%	3%	2%
							grade 4 events	280	274	628	272	1197	847
								0%	1%	1%	0%	4%	2%
							grade 5 events	902	1085	2747	1064	3019	1553
								3%	4%	7%	3%	10%	4%
							grade 6 events	490	479	9702	559	6924	2294
								1%	1%	25%	2%	23%	6%
							grade 7 events	25946	21140	15682	23473	13018	24265
								88%	85%	40%	85%	44%	71%

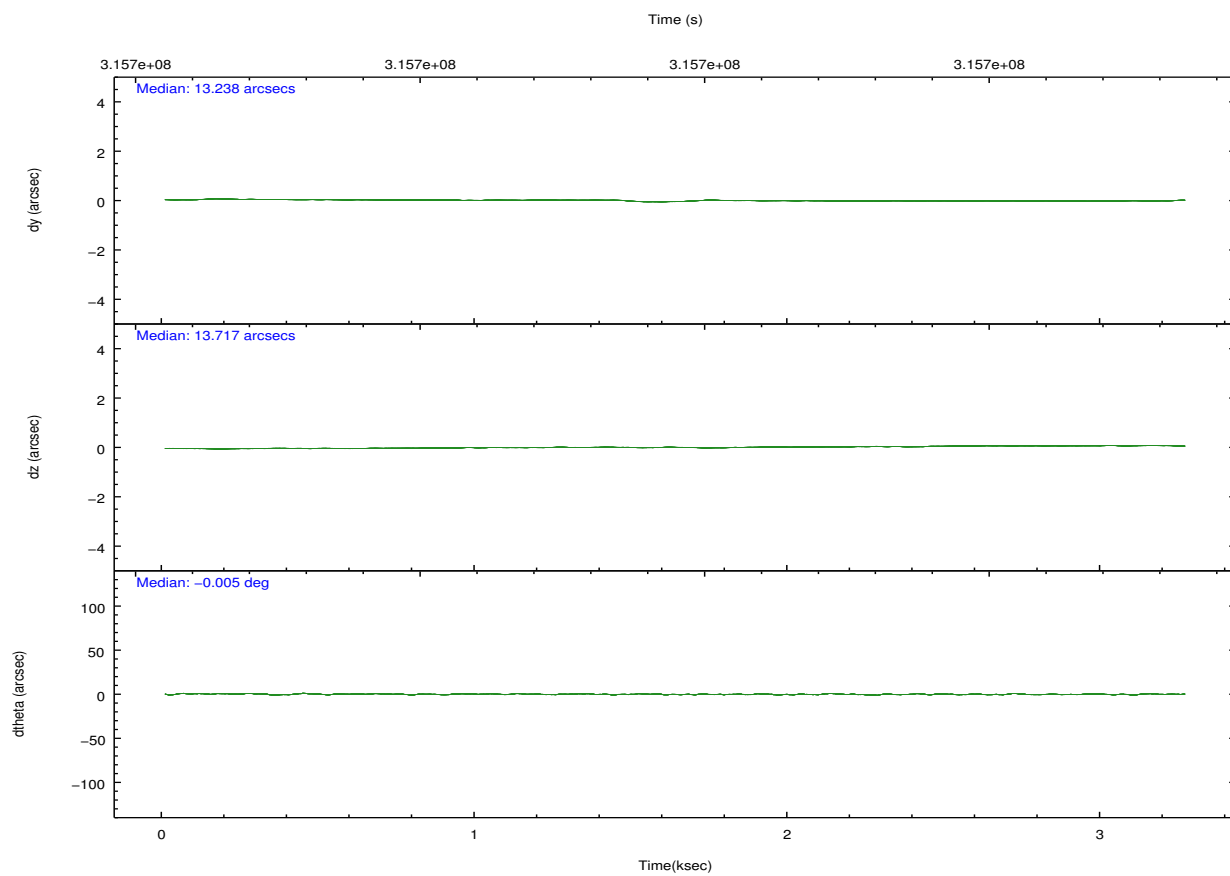
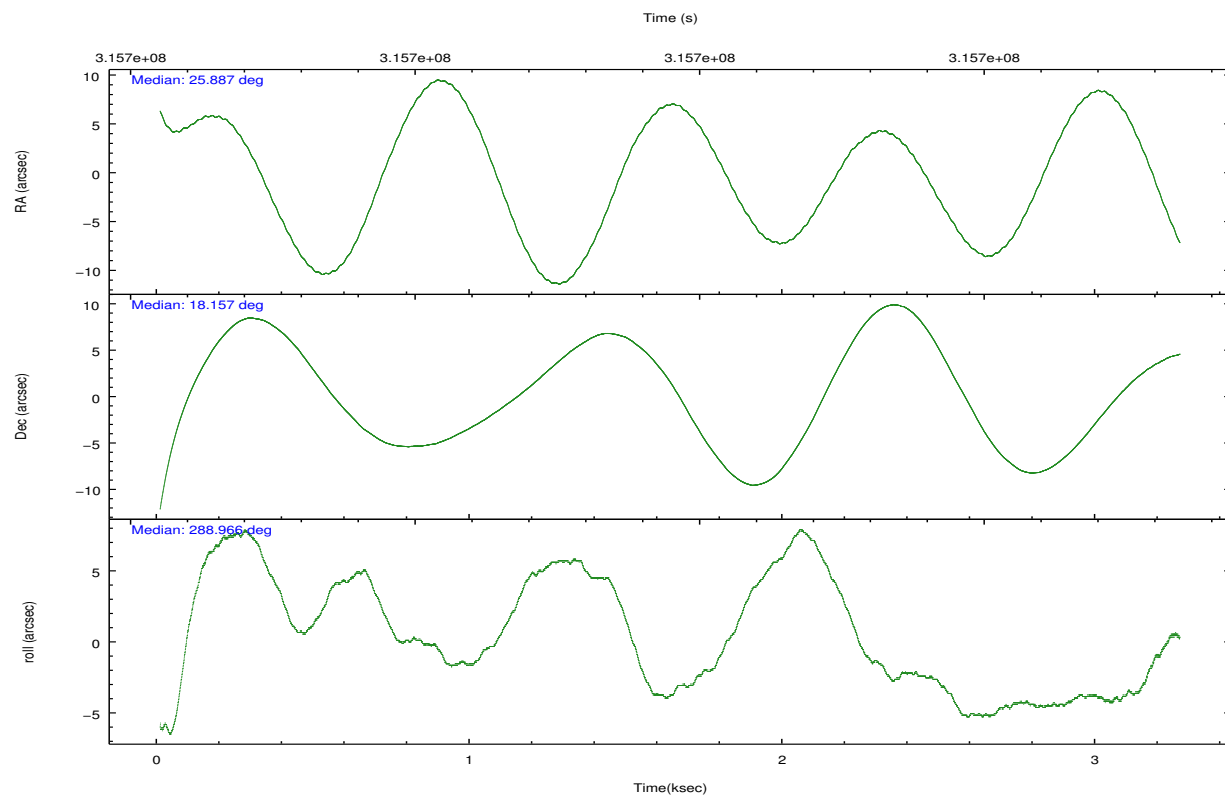
2.2 Compared Parameters

Parameter	Planned	Actual
Instrument	ACIS	ACIS
Detector	ACIS-235678	ACIS-235678
Grating	NONE	NONE
Data mode	VFAINT	VFAINT
Observation mode	POINTING	POINTING
[deg] Pointing RA	25.865240	25.88739742987972
[deg] Pointing Dec	18.174475	18.15686773136765
[deg] Pointing Roll	288.821991	288.9716903138578
[s] Window start time (MET)	314928065.184000	314928065.184000
[s] Window stop time (MET)	316828805.184000	316828805.184000
[mm] SIM focus pos	-0.684267	-0.6828225247311905
[mm] SIM defocus	0	0.001444936568705701
[mm] SIM translation stage pos	-190.132523	-190.1425803651734
[mm] SIM translation stage offset	0	0.01005778216563158
[s] Observation start time (MET)	315699537.184000	315698488.8109
Observation start date	2008-01-02T22:17:52	2008-01-02T22:01:28
[s] Observation end time (MET)	315702537.184000	315702670.8111
Observation end date	2008-01-02T23:07:52	2008-01-02T23:11:10
Read mode	TIMED	TIMED

Parameter	Planned	Actual
Obspar format version number	7	7
Obspar file type	PREDICTED	ACTUAL
Obspar update status	NONE	UPDATED
Number of optional ACIS chips dropped	0	0
On-chip summing requested	N	N
Subarray requested	NONE	NONE
Alternating exposures requested	N	N
[s] Primary exposure time	0.000000	3.2

2.3 Aspect



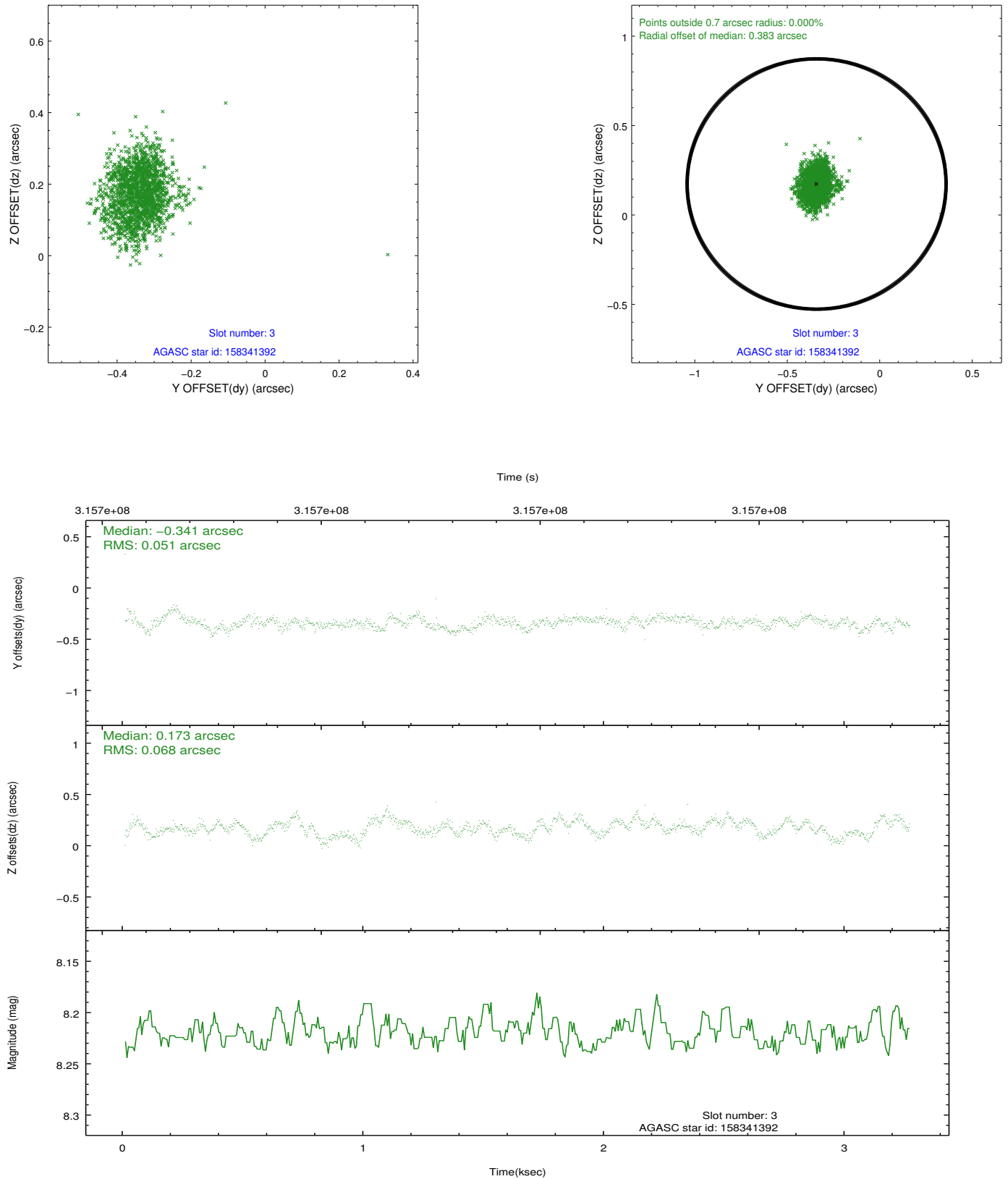


Slot Statistics

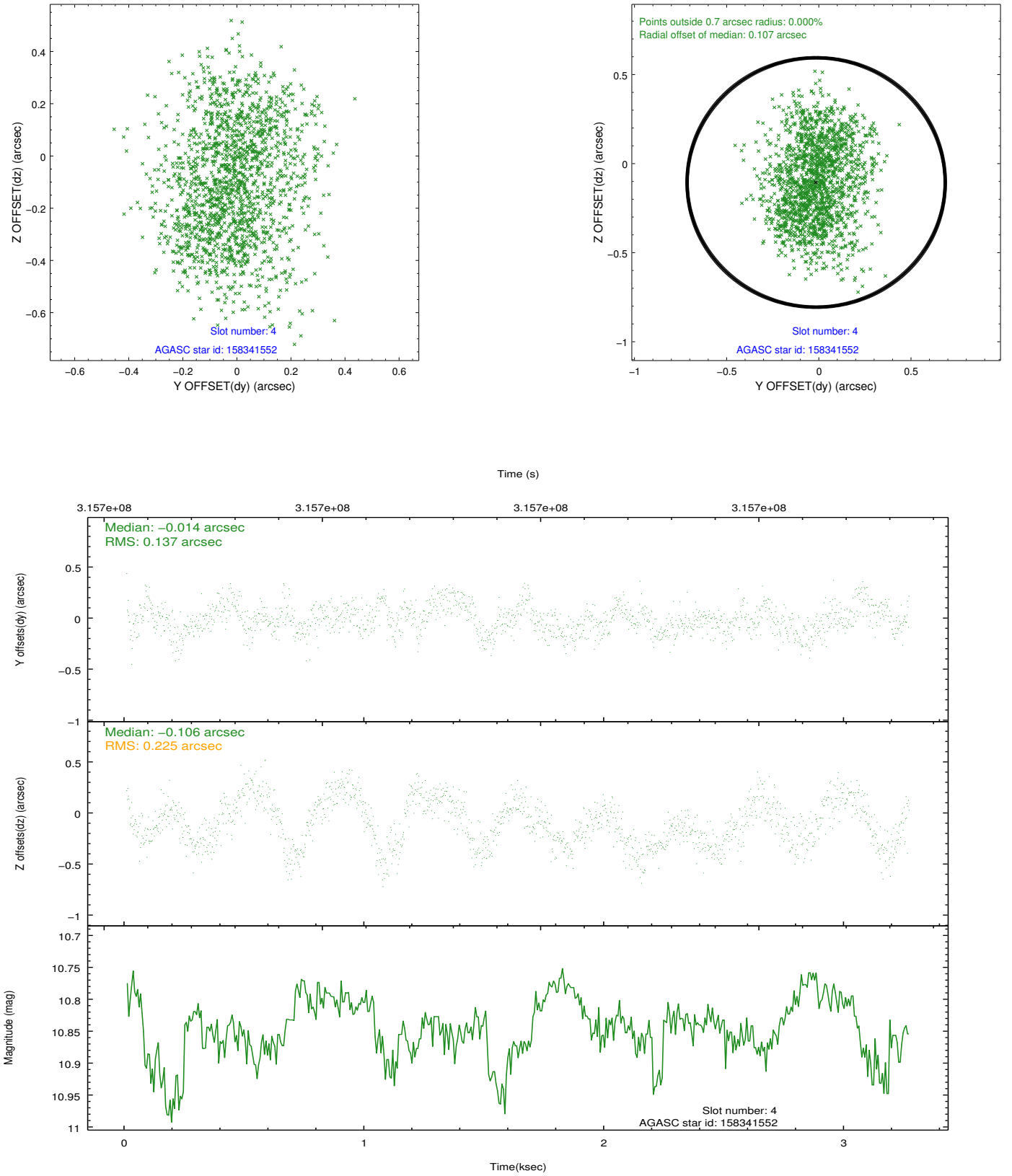
slot	status	id	mag	n_pts	med_dy	med_dz	dr1	dr2	ra	dec	mean_y	mean_z
0	FID	ACIS-S-1	7.20	796	0.071	-0.027	0.007	0.011	0.000000	0.000000	929.93	-1730.68
1	FID	ACIS-S-4	7.19	796	0.123	-0.011	0.005	0.009	0.000000	0.000000	2148.47	171.47
2	FID	ACIS-S-5	7.23	796	-0.221	0.051	0.005	0.009	0.000000	0.000000	-1816.73	167.36
3	GUIDE	158341392	8.22	1590	-0.341	0.173	0.089	0.139	25.386888	18.652149	-2156.03	-989.33
4	GUIDE	158341552	10.84	1589	-0.014	-0.106	0.285	0.443	26.388252	18.725072	-1304.57	2326.98
5	GUIDE	158343776	9.58	1588	0.180	0.038	0.110	0.170	25.983489	17.713818	1700.05	-149.76
6	GUIDE	158346000	9.63	1592	-0.051	-0.026	0.137	0.218	25.430156	18.257004	-760.79	-1311.39
7	GUIDE	158346992	9.14	1590	0.227	-0.090	0.103	0.165	25.273166	18.276827	-1004.62	-1797.17

2.4 Star Slots

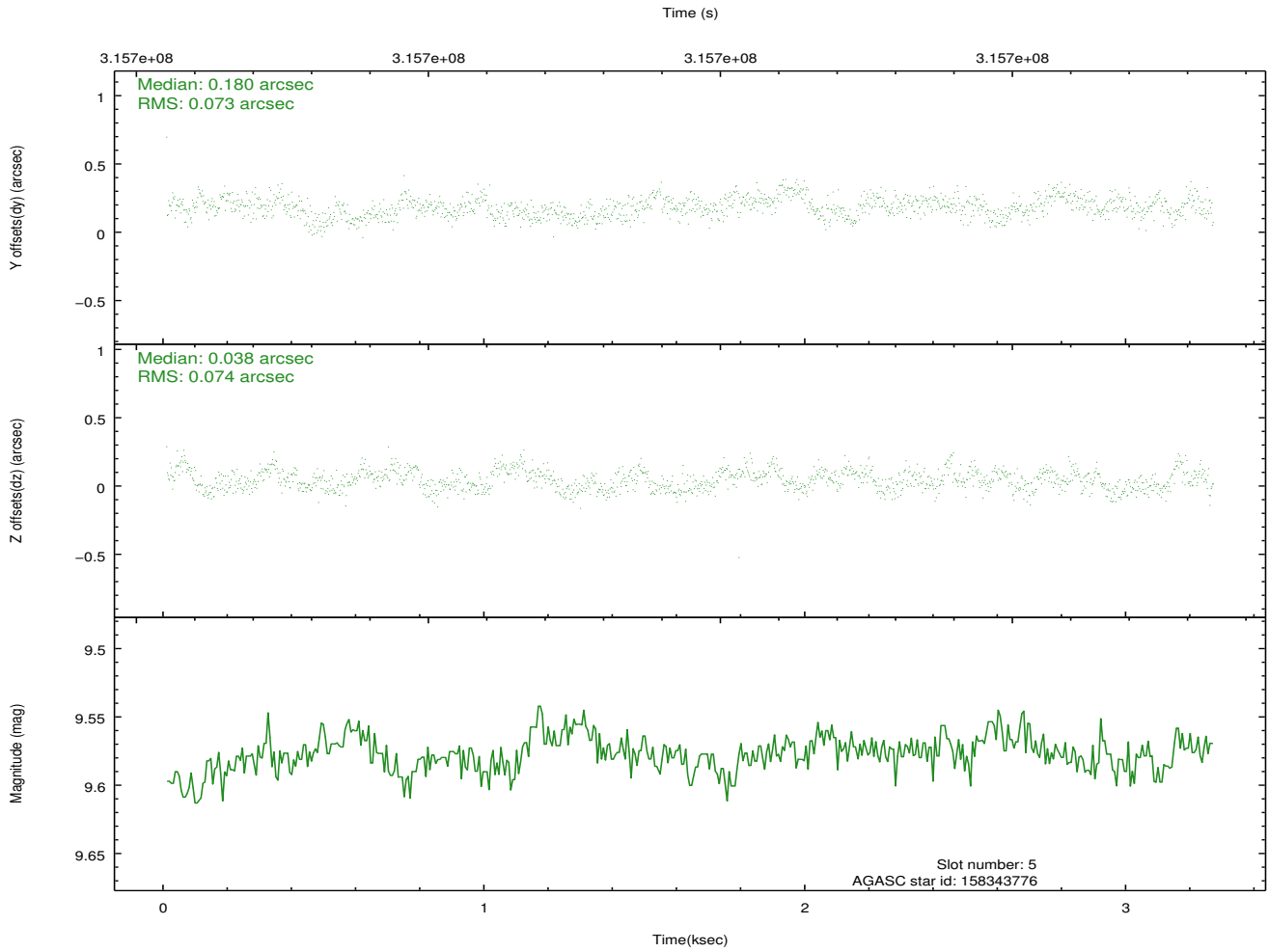
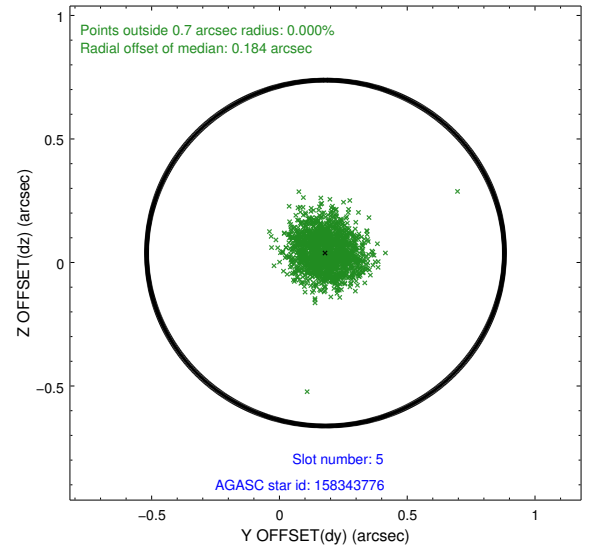
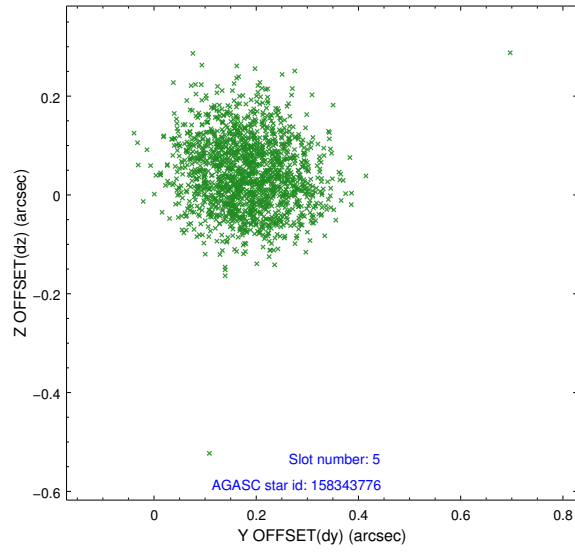
2.4.1 Slot 3



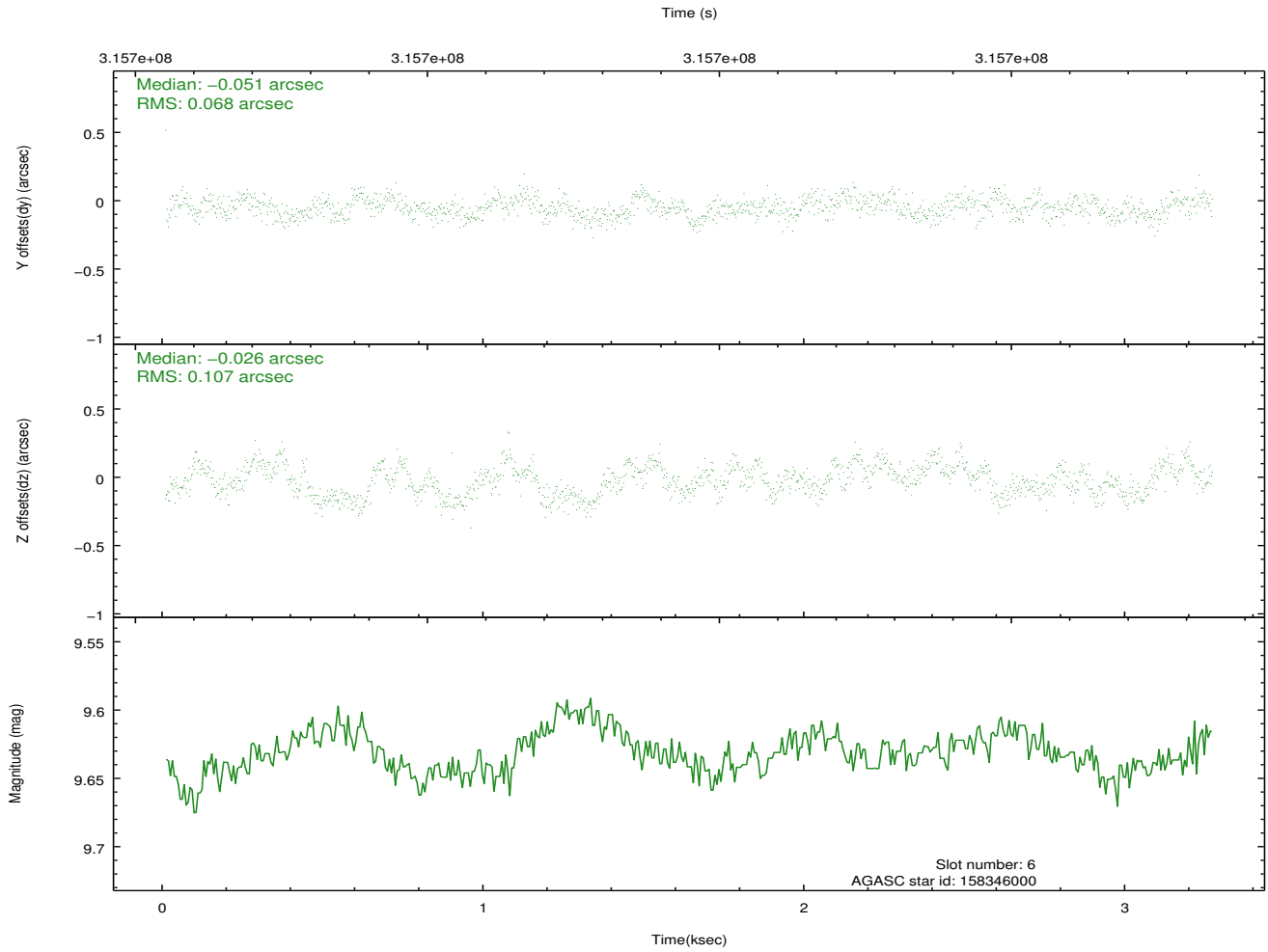
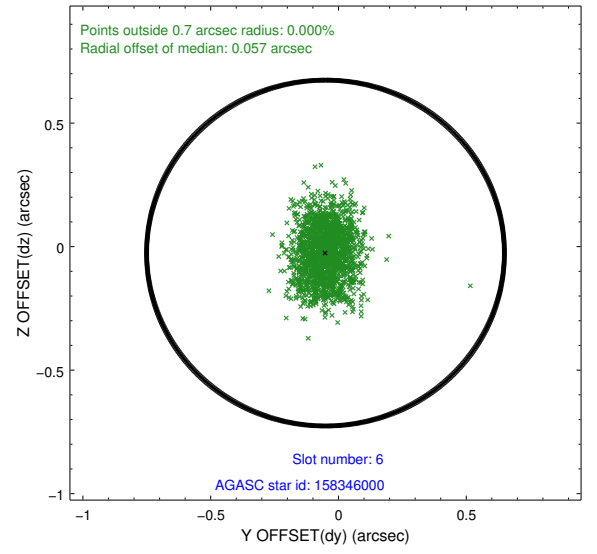
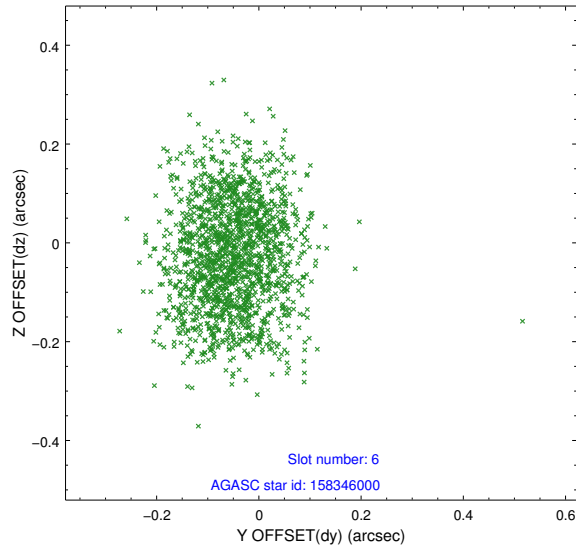
2.4.2 Slot 4



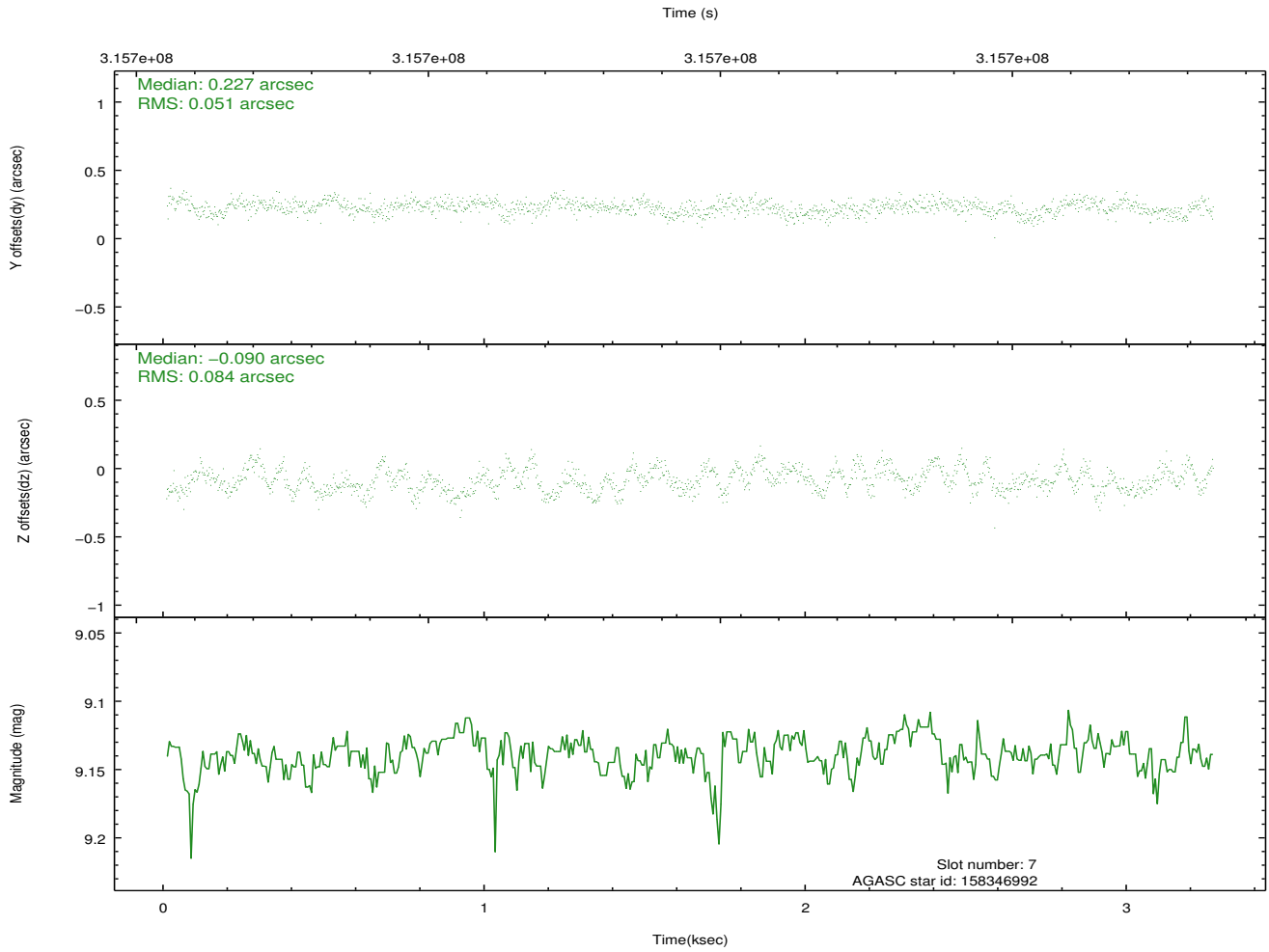
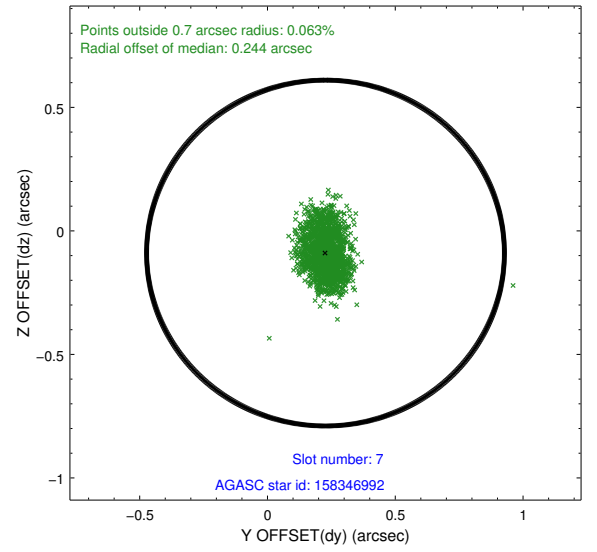
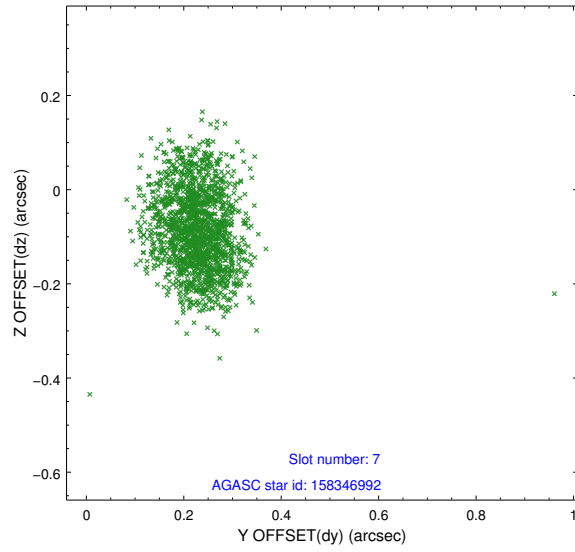
2.4.3 Slot 5



2.4.4 Slot 6

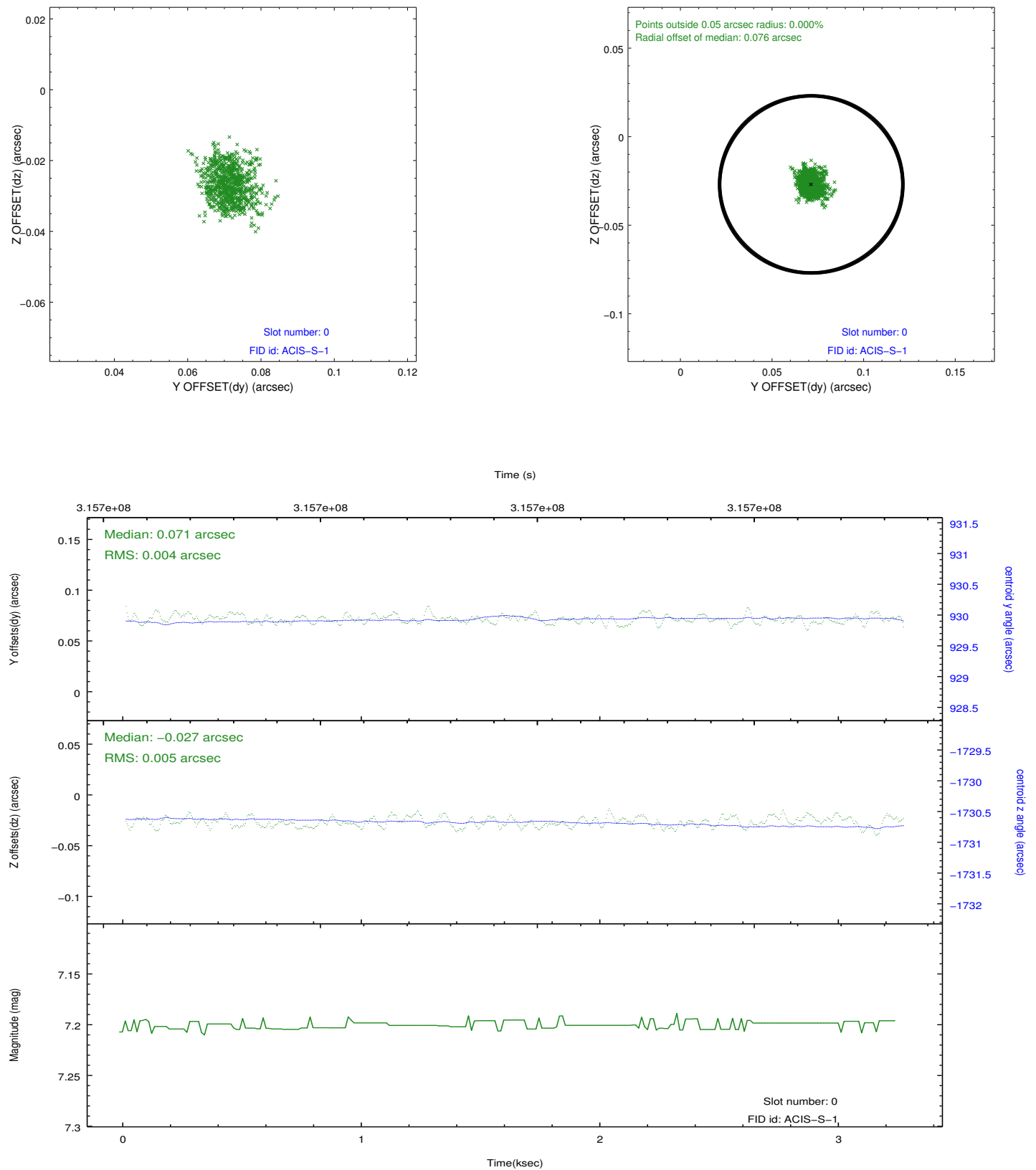


2.4.5 Slot 7

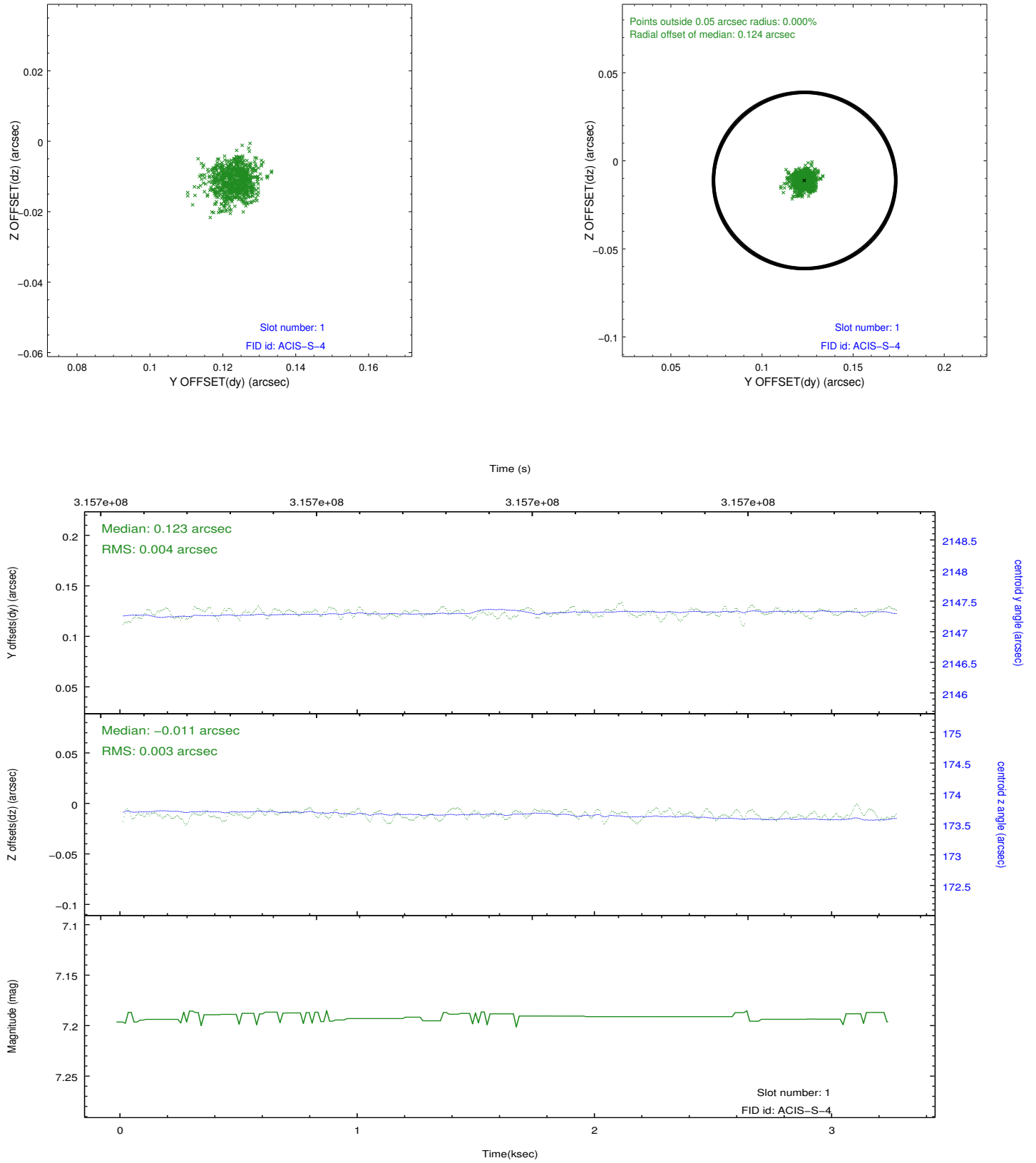


2.5 FID Slots

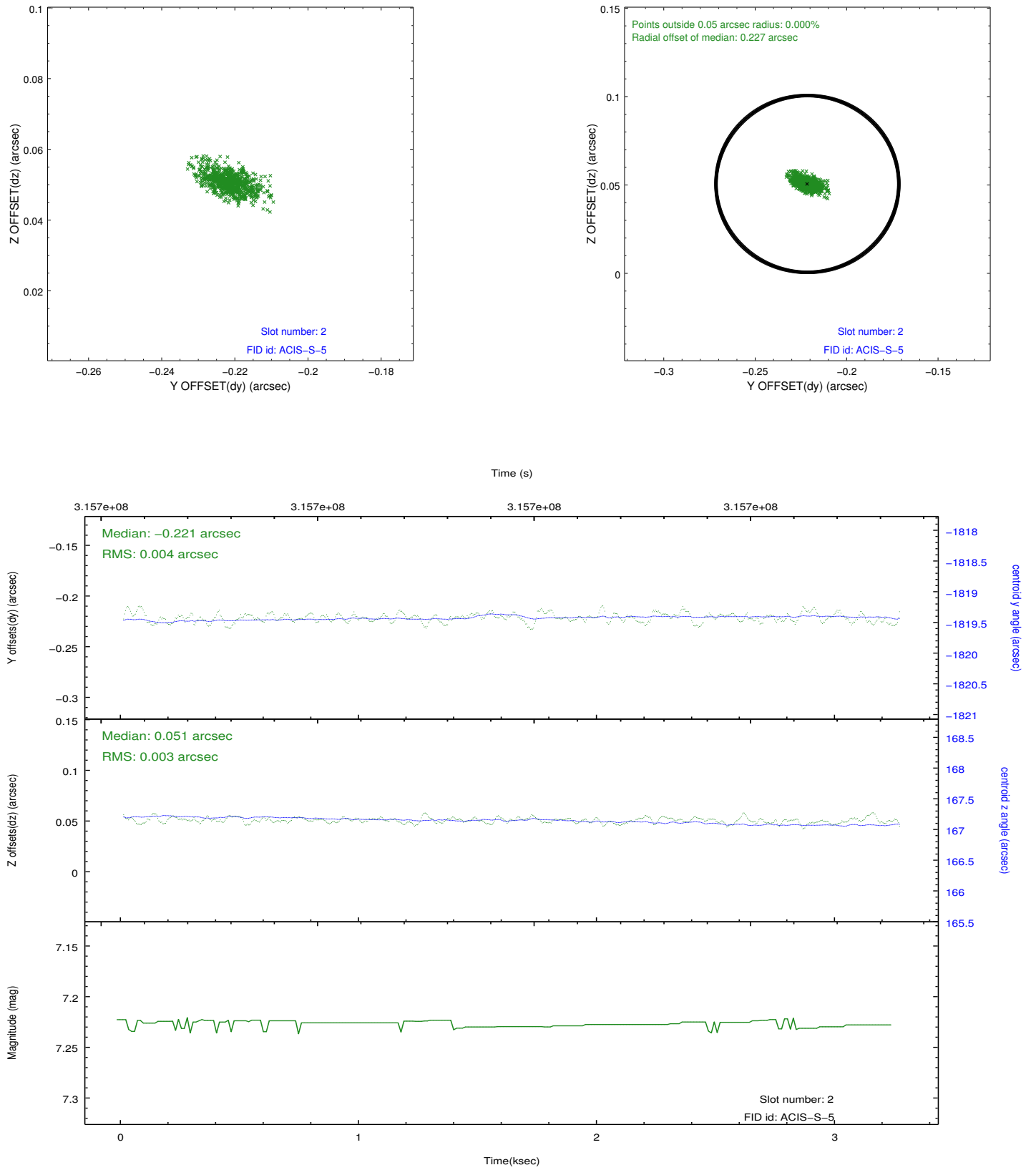
2.5.1 Slot 0



2.5.2 Slot 1



2.5.3 Slot 2



A Summary

A.1 Status

V&V Scientist	Beth Sundheim
V&V Date (YYYY-MM-DD)	2012.05.09
V&V Edition	1
V&V Disposition and Status	OK
V&V Charge Time	3.04959998

A.2 Comments

Window preference met.